

Data Path : Z:\voasrv\HPCHEM1\MSVOA\_N\Data\VN062722\  
 Data File : VN073161.D  
 Acq On : 27 Jun 2022 14:49  
 Operator : JC\MD  
 Sample : N3494-15  
 Misc : 5.0mL/MSVOA\_N/WATER  
 ALS Vial : 14 Sample Multiplier: 1

Instrument :  
 MSVOA\_N  
 ClientSampleId :  
 SP-EXC-1-5-GR

Quant Time: Jun 28 06:37:35 2022  
 Quant Method : Z:\voasrv\HPCHEM1\MSVOA\_N\methods\82N061722W.M  
 Quant Title : SW846 8260  
 QLast Update : Sat Jun 18 06:22:45 2022  
 Response via : Initial Calibration

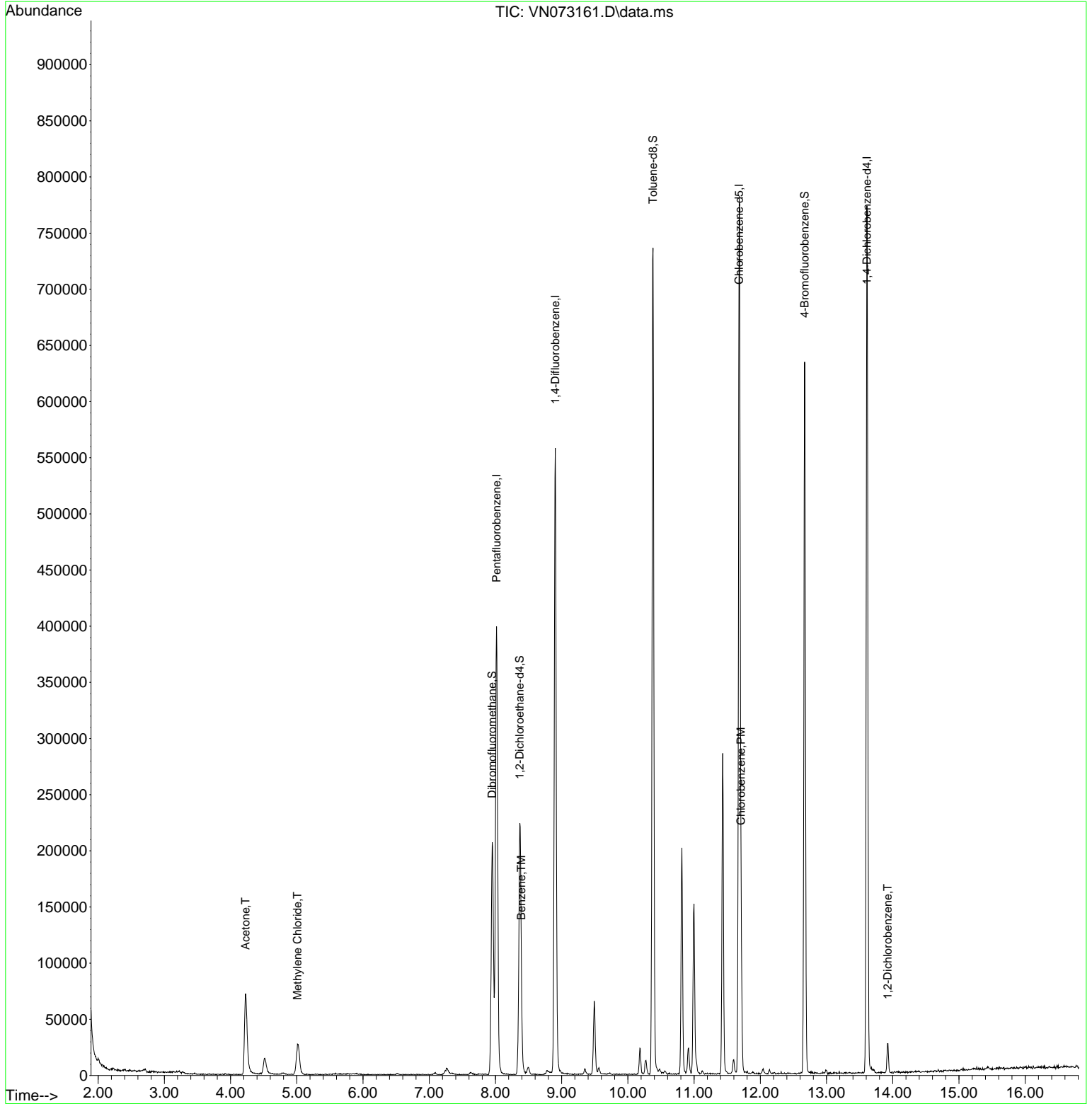
Compound	R.T.	QIon	Response	Conc	Units	Dev(Min)
-----						
Internal Standards						
1) Pentafluorobenzene	8.016	168	300430	50.000	ug/l	0.00
34) 1,4-Difluorobenzene	8.904	114	490889	50.000	ug/l	0.00
63) Chlorobenzene-d5	11.680	117	451306	50.000	ug/l	0.00
72) 1,4-Dichlorobenzene-d4	13.609	152	207612	50.000	ug/l	0.00
System Monitoring Compounds						
33) 1,2-Dichloroethane-d4	8.369	65	184277	45.369	ug/l	0.00
Spiked Amount	50.000	Range 74 - 125	Recovery	=	90.740%	
35) Dibromofluoromethane	7.951	113	153642	50.638	ug/l	0.00
Spiked Amount	50.000	Range 75 - 124	Recovery	=	101.280%	
50) Toluene-d8	10.380	98	512861	45.426	ug/l	0.00
Spiked Amount	50.000	Range 86 - 113	Recovery	=	90.860%	
62) 4-Bromofluorobenzene	12.668	95	217825	53.655	ug/l	0.00
Spiked Amount	50.000	Range 83 - 123	Recovery	=	107.300%	
Target Compounds						
						Qvalue
16) Acetone	4.228	43	135958	60.894	ug/l	92
20) Methylene Chloride	5.010	84	22923	6.408	ug/l	91
40) Benzene	8.392	78	14365	1.113	ug/l	100
65) Chlorobenzene	11.709	112	64181	7.282	ug/l	97
91) 1,2-Dichlorobenzene	13.921	146	10519	1.468	ug/l	99
-----						

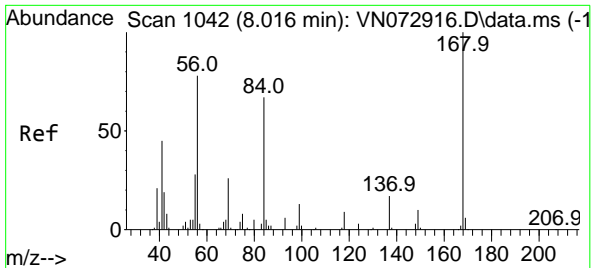
(#) = qualifier out of range (m) = manual integration (+) = signals summed

Data Path : Z:\voasrv\HPCHEM1\MSVOA\_N\Data\VN062722\  
 Data File : VN073161.D  
 Acq On : 27 Jun 2022 14:49  
 Operator : JC\MD  
 Sample : N3494-15  
 Misc : 5.0mL/MSVOA\_N/WATER  
 ALS Vial : 14 Sample Multiplier: 1

Instrument :  
 MSVOA\_N  
 ClientSampleId :  
 SP-EXC-1-5-GR

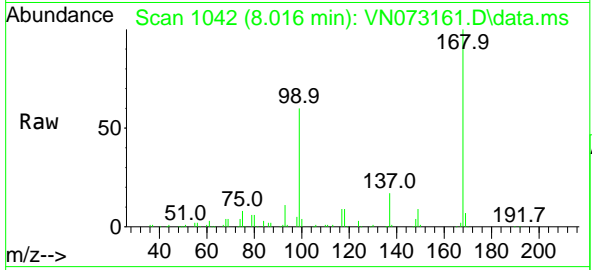
Quant Time: Jun 28 06:37:35 2022  
 Quant Method : Z:\voasrv\HPCHEM1\MSVOA\_N\methods\82N061722W.M  
 Quant Title : SW846 8260  
 QLast Update : Sat Jun 18 06:22:45 2022  
 Response via : Initial Calibration



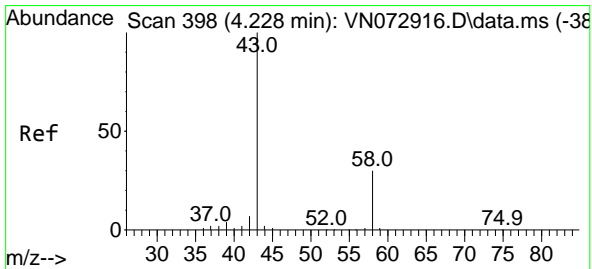
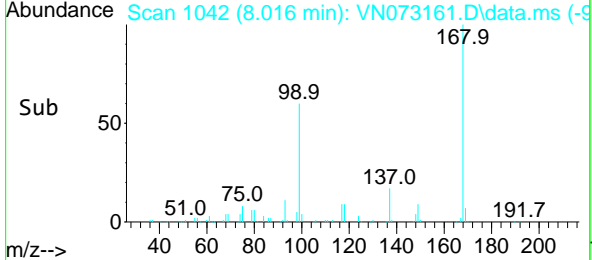
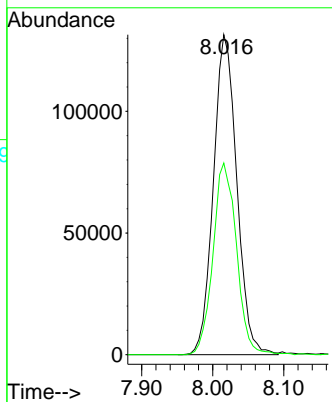


#1  
 Pentafluorobenzene  
 Concen: 50.000 ug/l  
 RT: 8.016 min Scan# 10  
 Delta R.T. -0.000 min  
 Lab File: VN073161.D  
 Acq: 27 Jun 2022 14:49

Instrument :  
 MSVOA\_N  
 ClientSampleId :  
 SP-EXC-1-5-GR

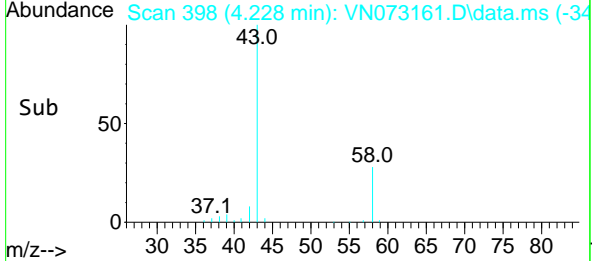
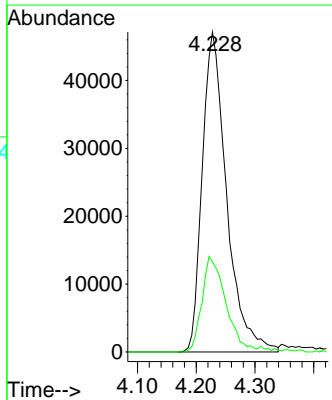
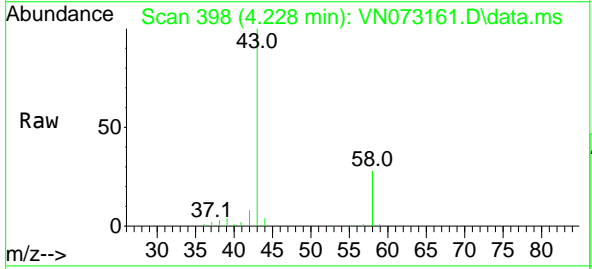


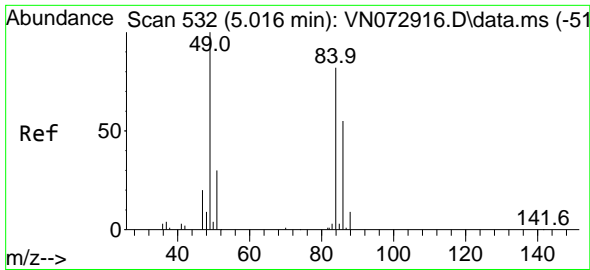
Tgt Ion:168 Resp: 300430  
 Ion Ratio Lower Upper  
 168 100  
 99 59.9 42.3 63.5



#16  
 Acetone  
 Concen: 60.894 ug/l  
 RT: 4.228 min Scan# 398  
 Delta R.T. -0.000 min  
 Lab File: VN073161.D  
 Acq: 27 Jun 2022 14:49

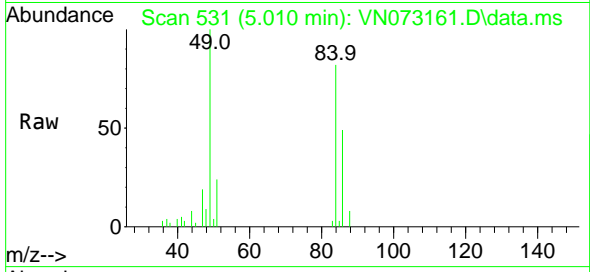
Tgt Ion: 43 Resp: 135958  
 Ion Ratio Lower Upper  
 43 100  
 58 28.2 26.0 39.0



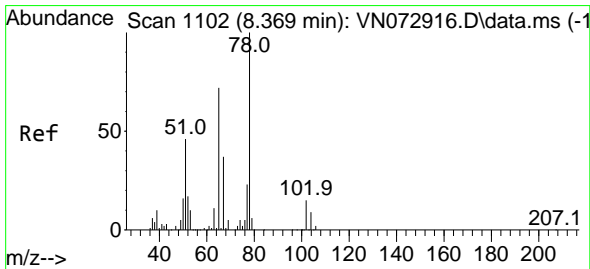
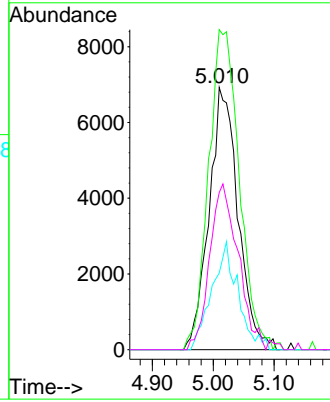
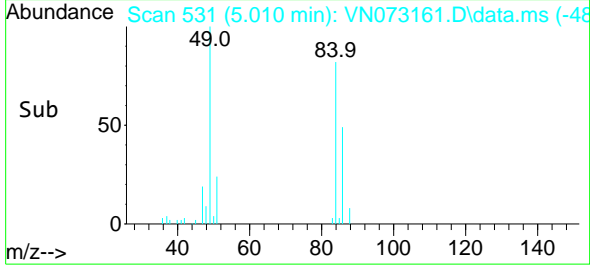


#20  
 Methylene Chloride  
 Concen: 6.408 ug/l  
 RT: 5.010 min Scan# 51  
 Delta R.T. -0.006 min  
 Lab File: VN073161.D  
 Acq: 27 Jun 2022 14:49

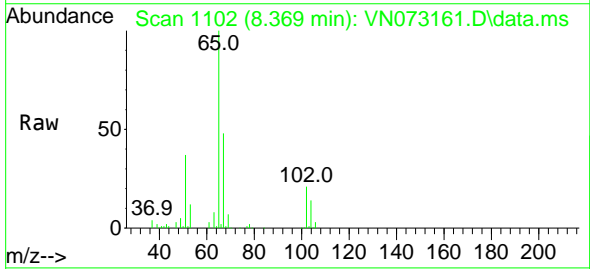
Instrument :  
 MSVOA\_N  
 ClientSampleId :  
 SP-EXC-1-5-GR



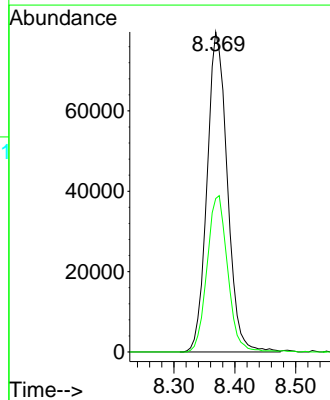
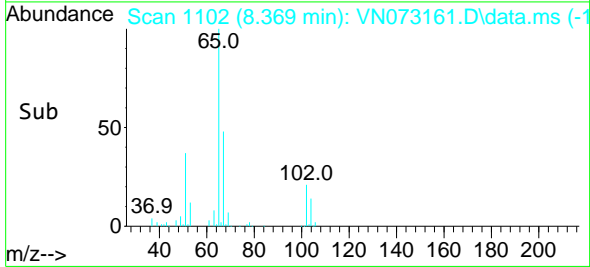
Tgt Ion: 84 Resp: 22923  
 Ion Ratio Lower Upper  
 84 100  
 49 122.1 88.3 132.5  
 51 29.2 28.2 42.2  
 86 59.9 50.6 76.0

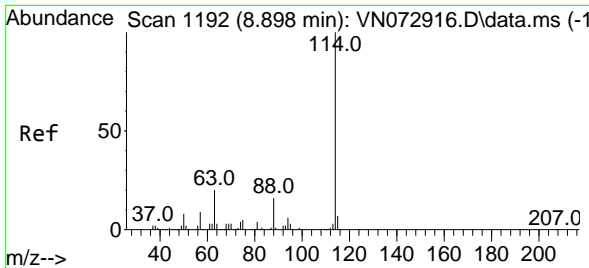


#33  
 1,2-Dichloroethane-d4  
 Concen: 45.369 ug/l  
 RT: 8.369 min Scan# 1102  
 Delta R.T. -0.000 min  
 Lab File: VN073161.D  
 Acq: 27 Jun 2022 14:49



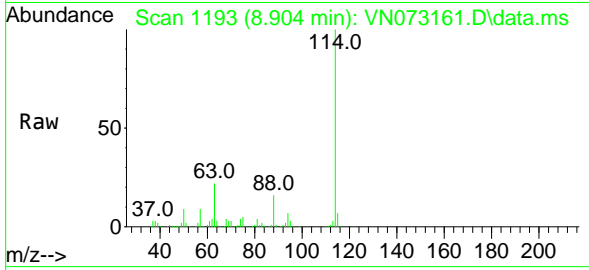
Tgt Ion: 65 Resp: 184277  
 Ion Ratio Lower Upper  
 65 100  
 67 49.6 0.0 104.8



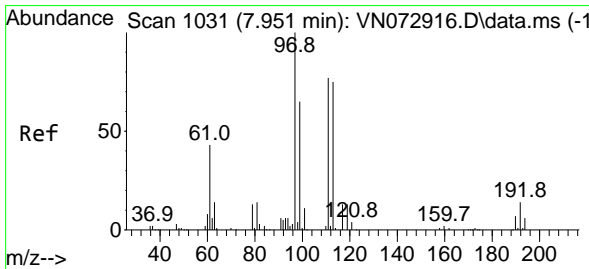
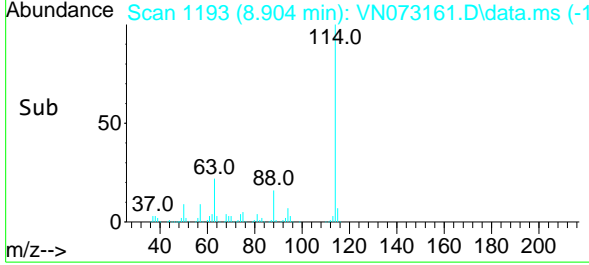
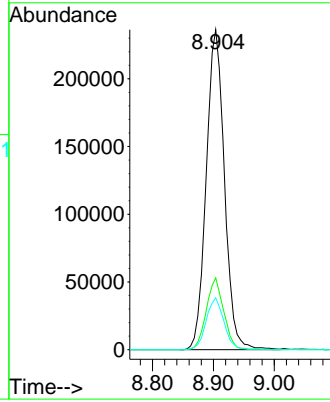


#34  
 1,4-Difluorobenzene  
 Concen: 50.000 ug/l  
 RT: 8.904 min Scan# 1193  
 Delta R.T. 0.006 min  
 Lab File: VN073161.D  
 Acq: 27 Jun 2022 14:49

Instrument : MSVOA\_N  
 ClientSampleId : SP-EXC-1-5-GR

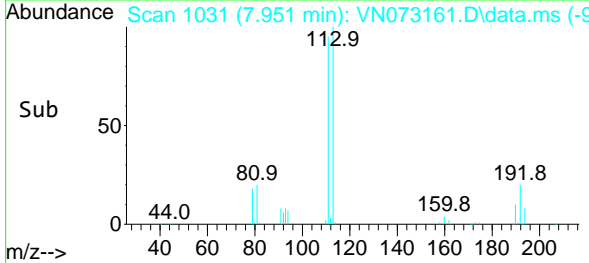
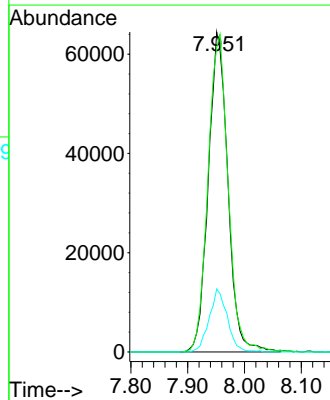
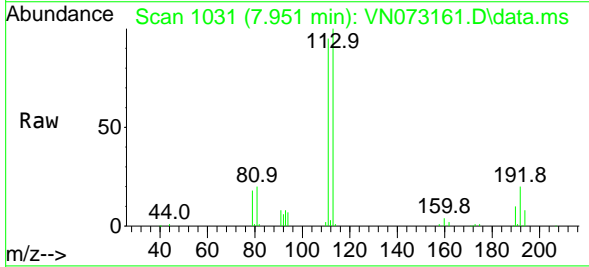


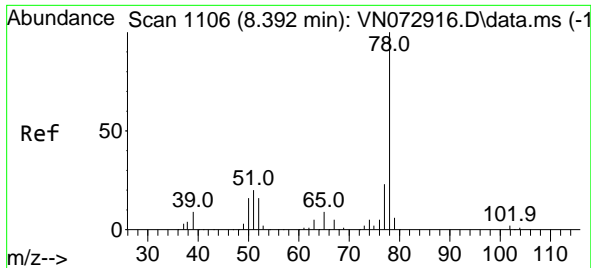
Tgt Ion:114 Resp: 490889  
 Ion Ratio Lower Upper  
 114 100  
 63 22.5 0.0 40.0  
 88 16.2 0.0 32.6



#35  
 Dibromofluoromethane  
 Concen: 50.638 ug/l  
 RT: 7.951 min Scan# 1031  
 Delta R.T. -0.000 min  
 Lab File: VN073161.D  
 Acq: 27 Jun 2022 14:49

Tgt Ion:113 Resp: 153642  
 Ion Ratio Lower Upper  
 113 100  
 111 102.4 81.4 122.0  
 192 18.4 17.0 25.6

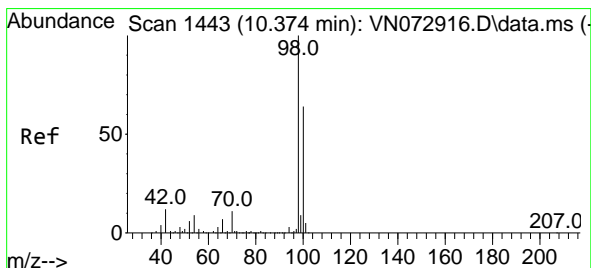
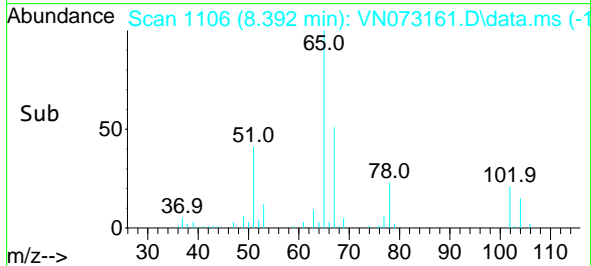
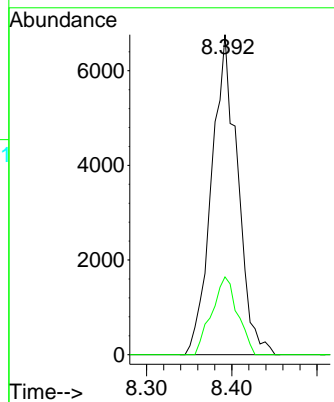
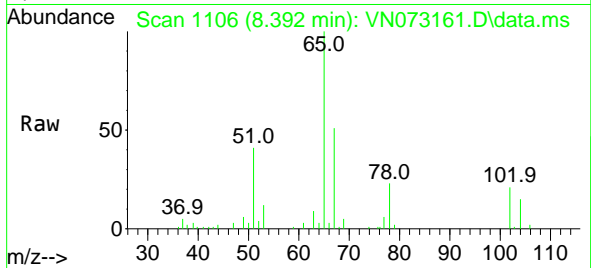




#40  
Benzene  
Concen: 1.113 ug/l  
RT: 8.392 min Scan# 1106  
Delta R.T. -0.000 min  
Lab File: VN073161.D  
Acq: 27 Jun 2022 14:49

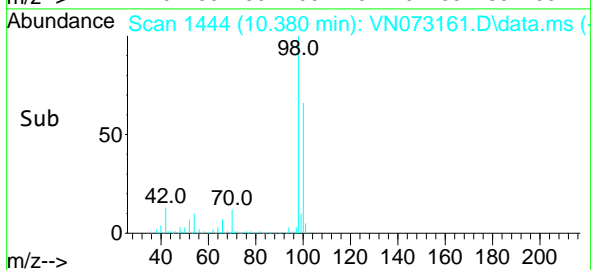
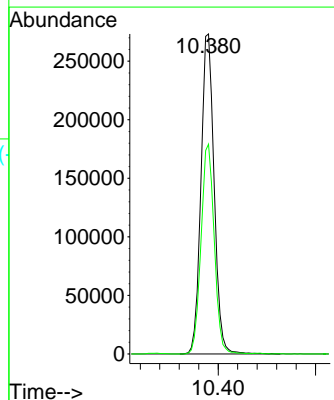
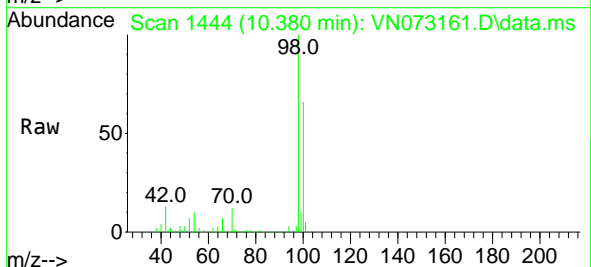
Instrument :  
MSVOA\_N  
ClientSampleId :  
SP-EXC-1-5-GR

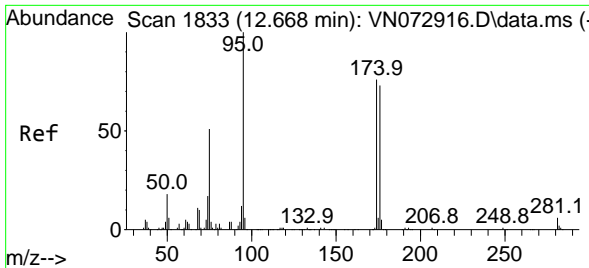
Tgt Ion: 78 Resp: 14365  
Ion Ratio Lower Upper  
78 100  
77 24.3 19.4 29.0



#50  
Toluene-d8  
Concen: 45.426 ug/l  
RT: 10.380 min Scan# 1444  
Delta R.T. 0.006 min  
Lab File: VN073161.D  
Acq: 27 Jun 2022 14:49

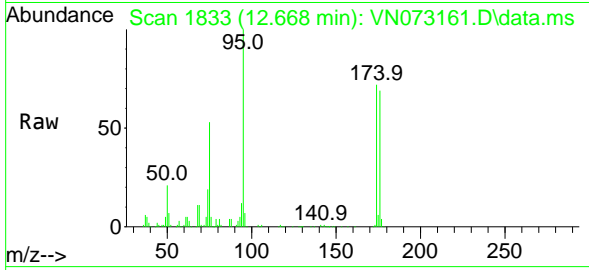
Tgt Ion: 98 Resp: 512861  
Ion Ratio Lower Upper  
98 100  
100 65.7 52.6 78.8



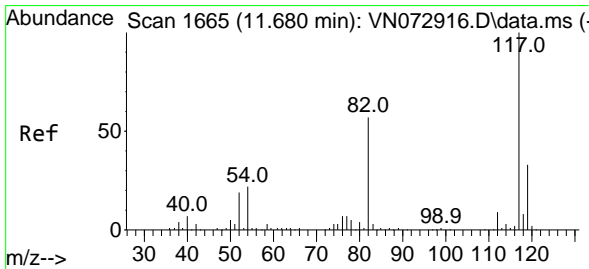
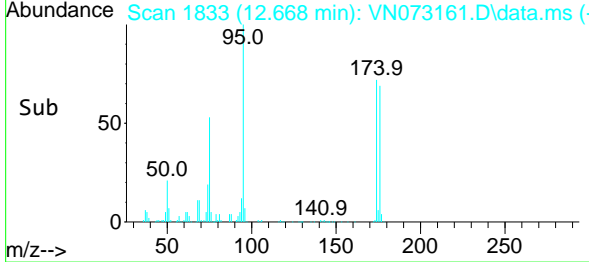
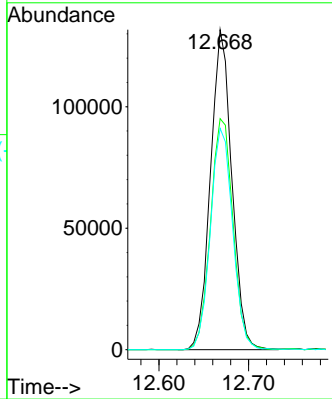


#62  
 4-Bromofluorobenzene  
 Concen: 53.655 ug/l  
 RT: 12.668 min Scan# 1833  
 Delta R.T. -0.000 min  
 Lab File: VN073161.D  
 Acq: 27 Jun 2022 14:49

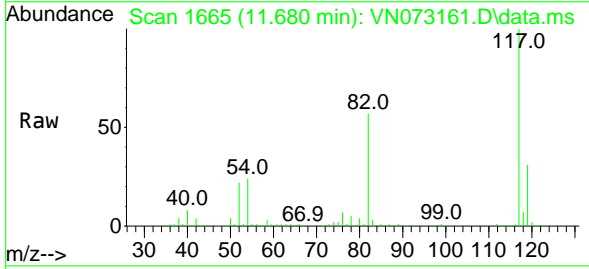
Instrument : MSVOA\_N  
 ClientSampleId : SP-EXC-1-5-GR



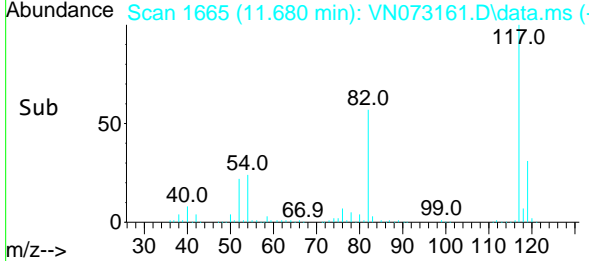
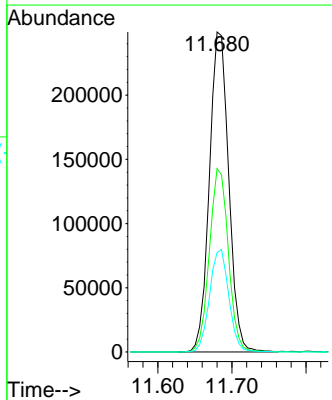
Tgt Ion: 95 Resp: 217825  
 Ion Ratio Lower Upper  
 95 100  
 174 76.0 0.0 167.6  
 176 72.1 0.0 163.4

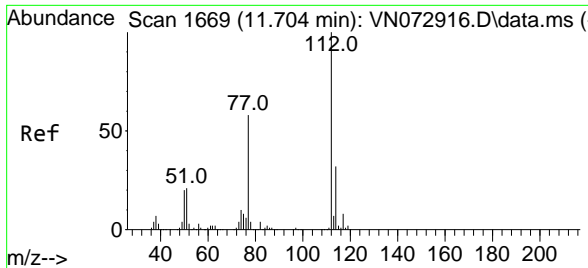


#63  
 Chlorobenzene-d5  
 Concen: 50.000 ug/l  
 RT: 11.680 min Scan# 1665  
 Delta R.T. -0.000 min  
 Lab File: VN073161.D  
 Acq: 27 Jun 2022 14:49



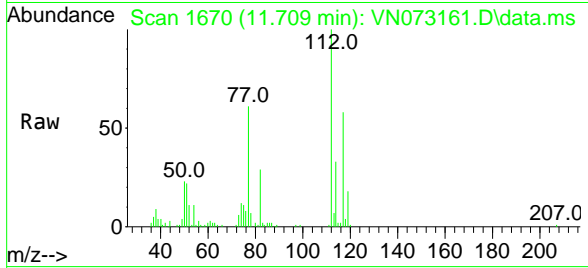
Tgt Ion: 117 Resp: 451306  
 Ion Ratio Lower Upper  
 117 100  
 82 57.3 44.2 66.2  
 119 31.1 25.4 38.0



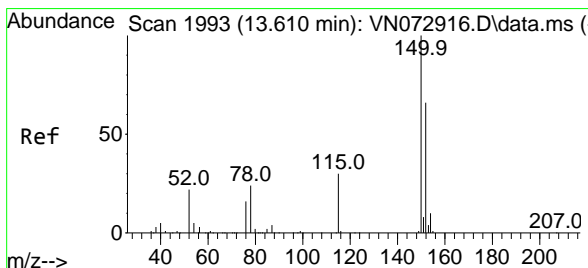
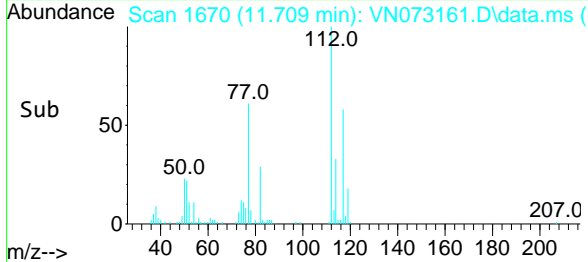
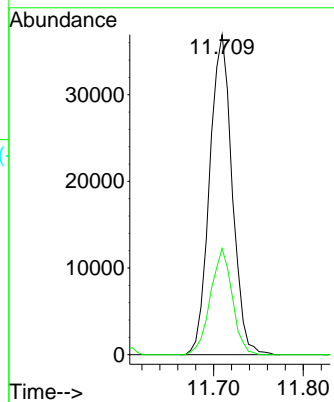


#65  
 Chlorobenzene  
 Concen: 7.282 ug/l  
 RT: 11.709 min Scan# 1670  
 Delta R.T. 0.006 min  
 Lab File: VN073161.D  
 Acq: 27 Jun 2022 14:49

Instrument : MSVOA\_N  
 ClientSampleId : SP-EXC-1-5-GR

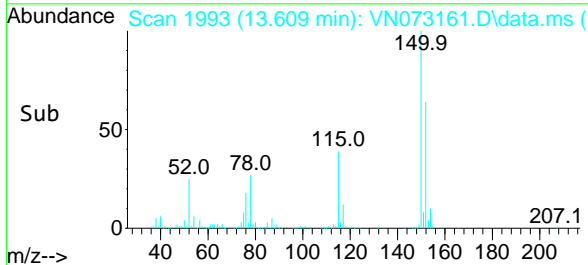
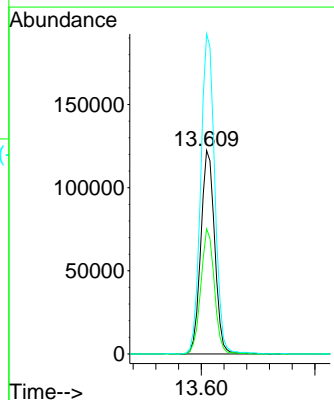
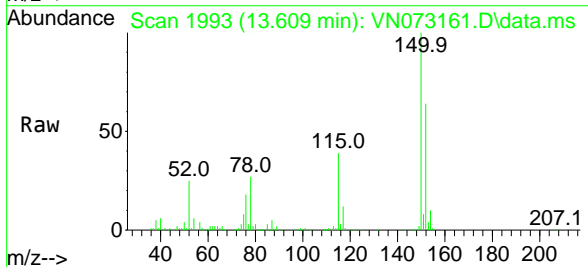


Tgt Ion:112 Resp: 64181  
 Ion Ratio Lower Upper  
 112 100  
 114 33.2 25.4 38.2

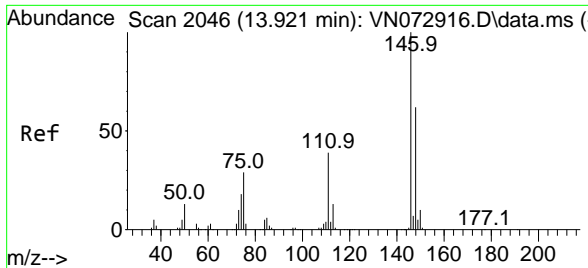


#72  
 1,4-Dichlorobenzene-d4  
 Concen: 50.000 ug/l  
 RT: 13.609 min Scan# 1993  
 Delta R.T. -0.000 min  
 Lab File: VN073161.D  
 Acq: 27 Jun 2022 14:49

Tgt Ion:152 Resp: 207612  
 Ion Ratio Lower Upper  
 152 100  
 115 60.1 28.9 86.7  
 150 159.2 0.0 356.2

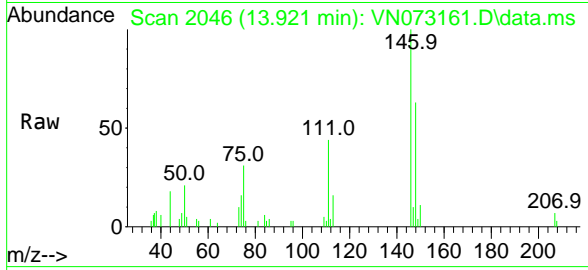






#91  
 1,2-Dichlorobenzene  
 Concen: 1.468 ug/l  
 RT: 13.921 min Scan# 20  
 Delta R.T. -0.000 min  
 Lab File: VN073161.D  
 Acq: 27 Jun 2022 14:49

Instrument :  
 MSVOA\_N  
 ClientSampleId :  
 SP-EXC-1-5-GR



Tgt Ion:146 Resp: 10519

Ion	Ratio	Lower	Upper
146	100		
111	41.5	20.9	62.8
148	65.2	32.1	96.3

