

Data Path : Z:\voasrv\HPCHEM1\MSVOA\_N\Data\VN062723\  
 Data File : VN078424.D  
 Acq On : 27 Jun 2023 18:17  
 Operator : JC\MD  
 Sample : 03376-09DL 4X  
 Misc : 5.0mL/MSVOA\_N/WATER  
 ALS Vial : 15 Sample Multiplier: 1

Instrument :  
 MSVOA\_N  
 ClientSampleId :  
 TW-2DL

Quant Time: Jun 28 07:13:50 2023  
 Quant Method : Z:\voasrv\HPCHEM1\MSVOA\_N\methods\82N060623W.M  
 Quant Title : SW846 8260  
 QLast Update : Wed Jun 07 05:05:00 2023  
 Response via : Initial Calibration

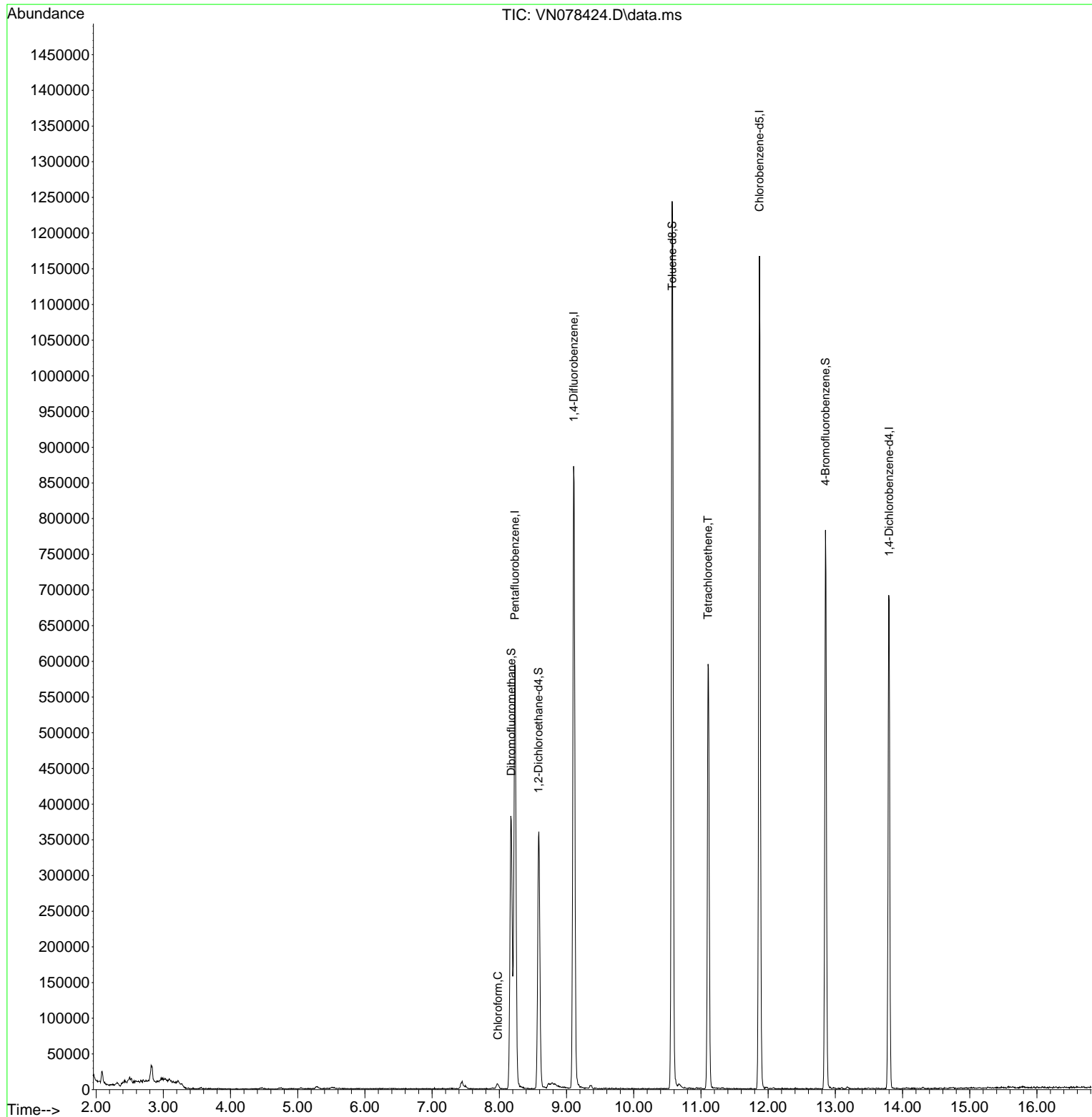
Compound	R.T.	QIon	Response	Conc	Units	Dev(Min)
-----						
Internal Standards						
1) Pentafluorobenzene	8.230	168	427628	50.000	ug/l	0.00
34) 1,4-Difluorobenzene	9.106	114	774759	50.000	ug/l	0.00
63) Chlorobenzene-d5	11.871	117	696664	50.000	ug/l	0.00
72) 1,4-Dichlorobenzene-d4	13.800	152	189239	50.000	ug/l	0.00
System Monitoring Compounds						
33) 1,2-Dichloroethane-d4	8.583	65	295583	51.842	ug/l	0.00
Spiked Amount	50.000	Range	74 - 125	Recovery	=	103.680%
35) Dibromofluoromethane	8.177	113	282716	57.712	ug/l	0.00
Spiked Amount	50.000	Range	75 - 124	Recovery	=	115.420%
50) Toluene-d8	10.571	98	907713	48.065	ug/l	0.00
Spiked Amount	50.000	Range	86 - 113	Recovery	=	96.140%
62) 4-Bromofluorobenzene	12.853	95	267929	45.637	ug/l	0.00
Spiked Amount	50.000	Range	83 - 123	Recovery	=	91.280%
Target Compounds						
					Qvalue	
30) Chloroform	7.977	83	6639	0.697	ug/l	83
64) Tetrachloroethene	11.106	164	135753	29.209	ug/l	96
-----						

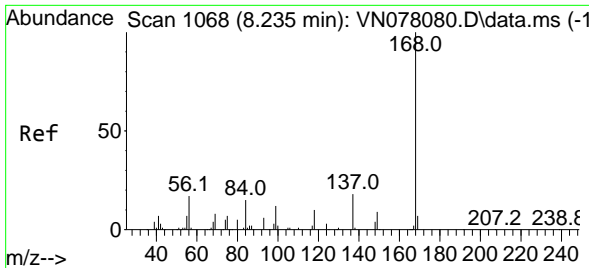
(#) = qualifier out of range (m) = manual integration (+) = signals summed

Data Path : Z:\voasrv\HPCHEM1\MSVOA\_N\Data\VN062723\  
 Data File : VN078424.D  
 Acq On : 27 Jun 2023 18:17  
 Operator : JC\MD  
 Sample : 03376-09DL 4X  
 Misc : 5.0mL/MSVOA\_N/WATER  
 ALS Vial : 15 Sample Multiplier: 1

Instrument :  
 MSVOA\_N  
 ClientSampleId :  
 TW-2DL

Quant Time: Jun 28 07:13:50 2023  
 Quant Method : Z:\voasrv\HPCHEM1\MSVOA\_N\methods\82N060623W.M  
 Quant Title : SW846 8260  
 QLast Update : Wed Jun 07 05:05:00 2023  
 Response via : Initial Calibration

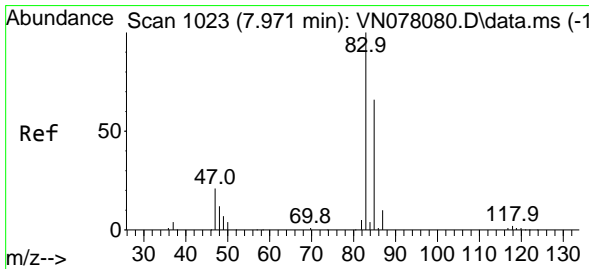
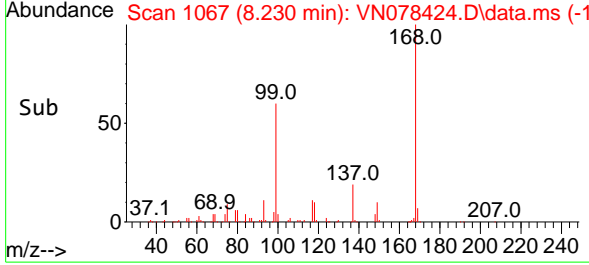
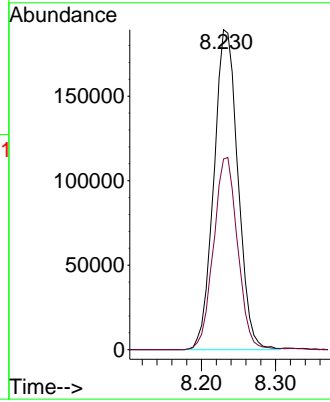
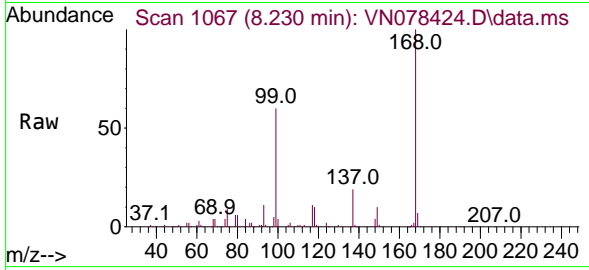




#1  
 Pentafluorobenzene  
 Concen: 50.000 ug/l  
 RT: 8.230 min Scan# 1067  
 Delta R.T. -0.005 min  
 Lab File: VN078424.D  
 Acq: 27 Jun 2023 18:17

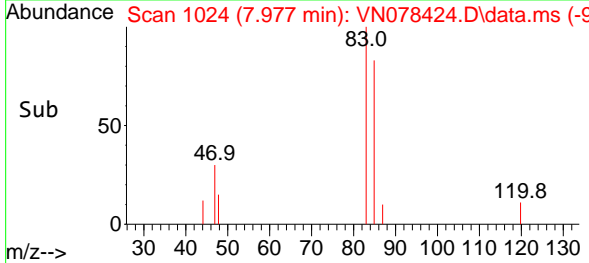
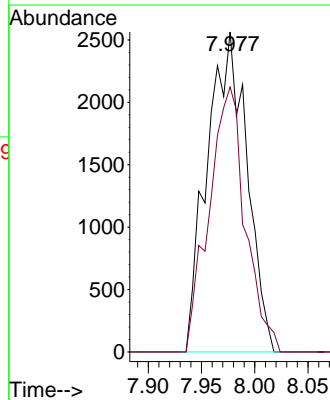
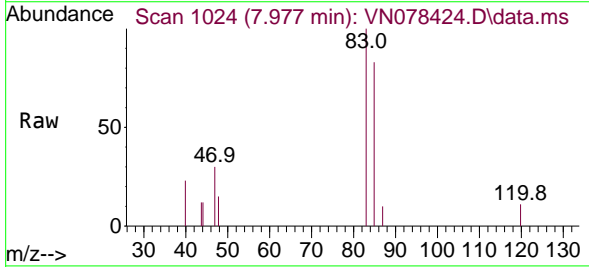
Instrument : MSVOA\_N  
 ClientSampleId : TW-2DL

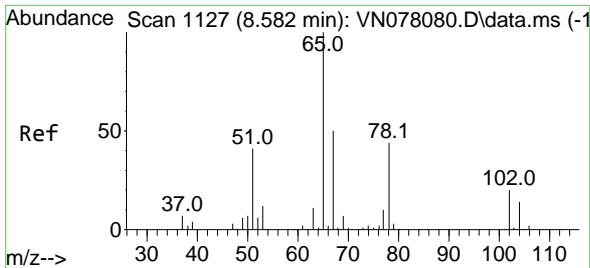
Tgt Ion:168 Resp: 427628  
 Ion Ratio Lower Upper  
 168 100  
 99 59.6 53.0 79.6



#30  
 Chloroform  
 Concen: 0.697 ug/l  
 RT: 7.977 min Scan# 1024  
 Delta R.T. 0.006 min  
 Lab File: VN078424.D  
 Acq: 27 Jun 2023 18:17

Tgt Ion: 83 Resp: 6639  
 Ion Ratio Lower Upper  
 83 100  
 85 82.8 55.4 83.0

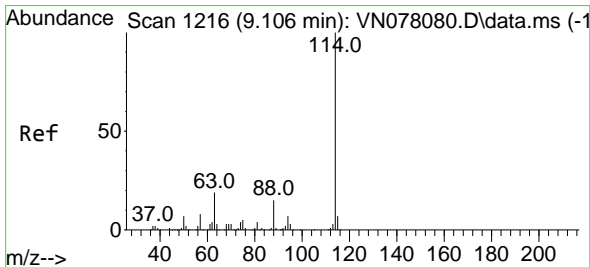
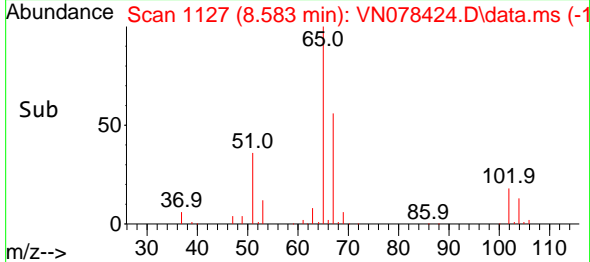
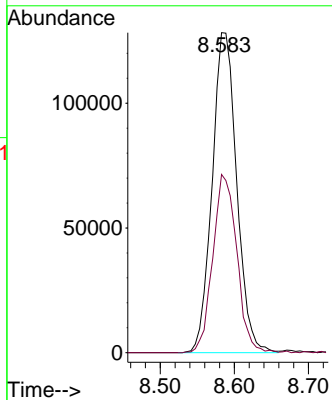
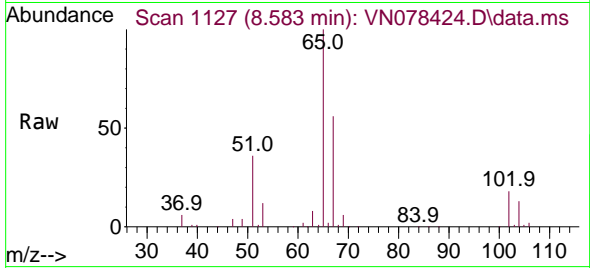




#33  
 1,2-Dichloroethane-d4  
 Concen: 51.842 ug/l  
 RT: 8.583 min Scan# 1127  
 Delta R.T. 0.000 min  
 Lab File: VN078424.D  
 Acq: 27 Jun 2023 18:17

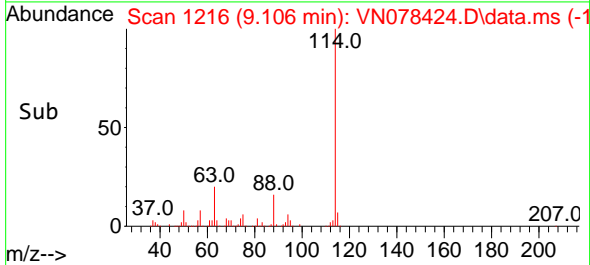
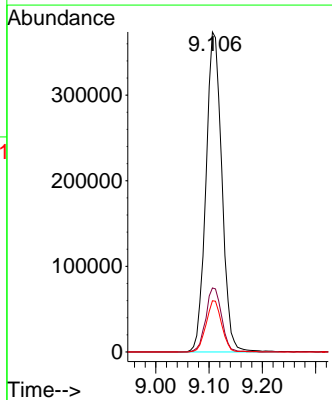
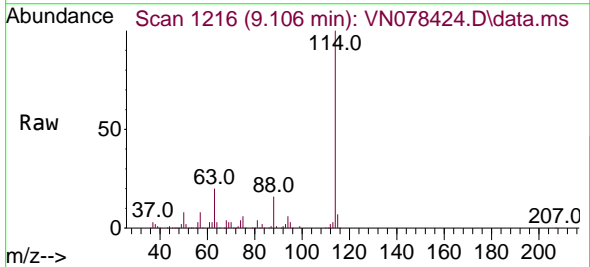
Instrument :  
 MSVOA\_N  
 ClientSampleId :  
 TW-2DL

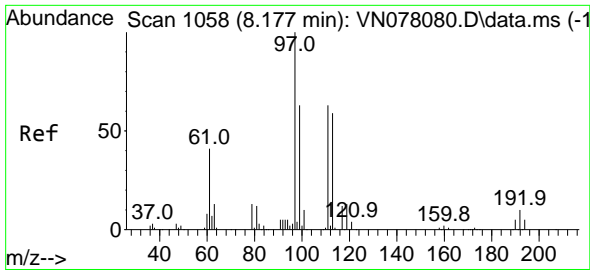
Tgt Ion: 65 Resp: 295583  
 Ion Ratio Lower Upper  
 65 100  
 67 54.5 0.0 106.6



#34  
 1,4-Difluorobenzene  
 Concen: 50.000 ug/l  
 RT: 9.106 min Scan# 1216  
 Delta R.T. 0.000 min  
 Lab File: VN078424.D  
 Acq: 27 Jun 2023 18:17

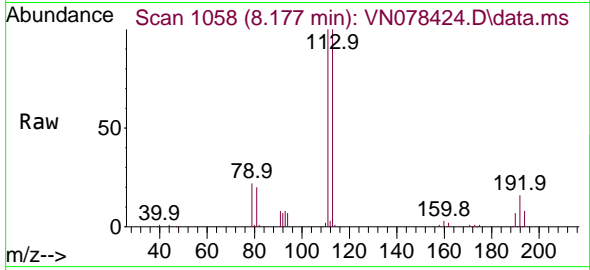
Tgt Ion:114 Resp: 774759  
 Ion Ratio Lower Upper  
 114 100  
 63 20.0 0.0 36.4  
 88 16.0 0.0 30.6



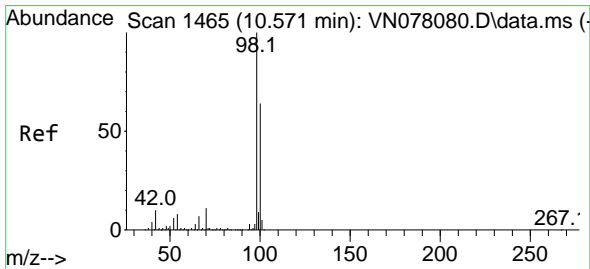
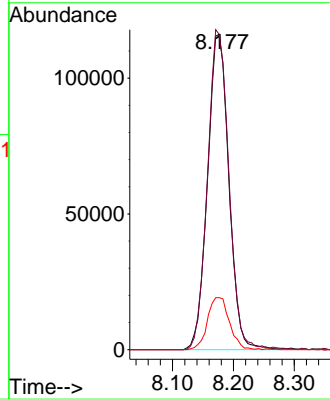
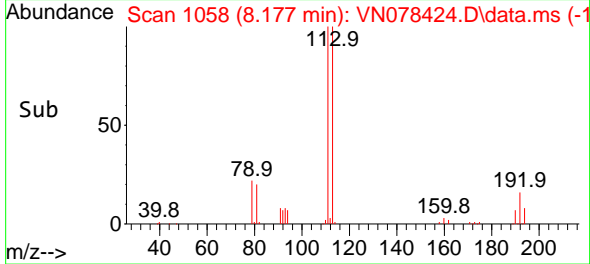


#35  
 Dibromofluoromethane  
 Concen: 57.712 ug/l  
 RT: 8.177 min Scan# 1058  
 Delta R.T. 0.000 min  
 Lab File: VN078424.D  
 Acq: 27 Jun 2023 18:17

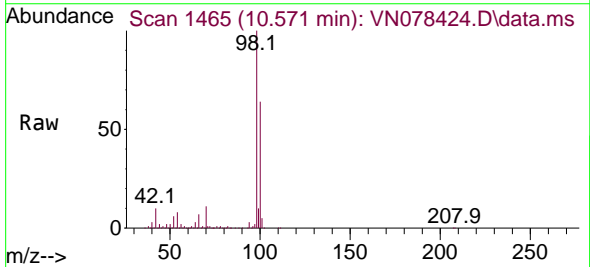
Instrument : MSVOA\_N  
 ClientSampleId : TW-2DL



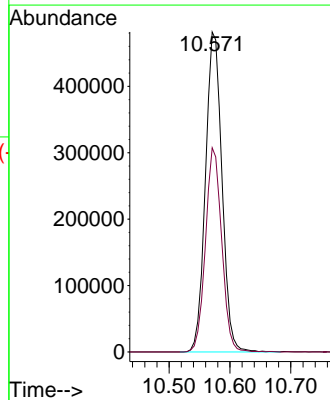
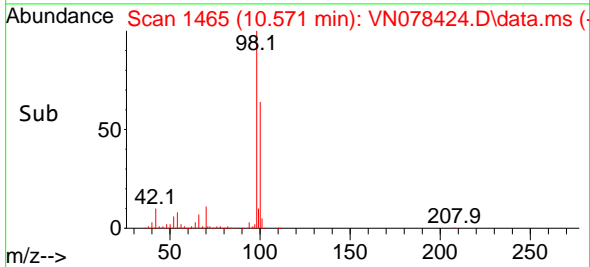
Tgt Ion:113 Resp: 282716  
 Ion Ratio Lower Upper  
 113 100  
 111 101.4 82.6 123.8  
 192 17.0 12.7 19.1

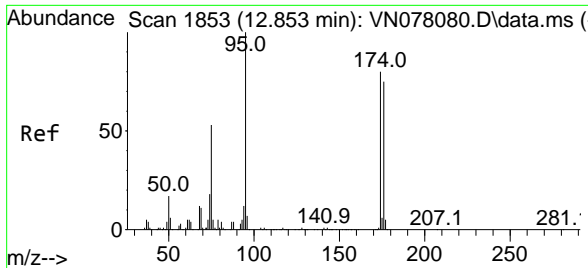


#50  
 Toluene-d8  
 Concen: 48.065 ug/l  
 RT: 10.571 min Scan# 1465  
 Delta R.T. 0.000 min  
 Lab File: VN078424.D  
 Acq: 27 Jun 2023 18:17



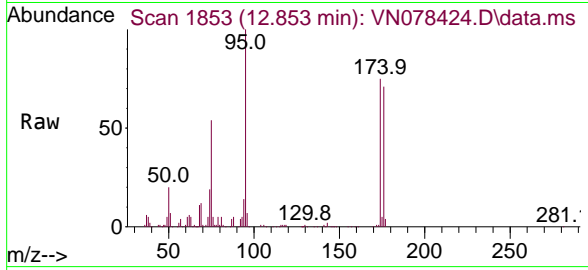
Tgt Ion: 98 Resp: 907713  
 Ion Ratio Lower Upper  
 98 100  
 100 62.7 52.0 78.0



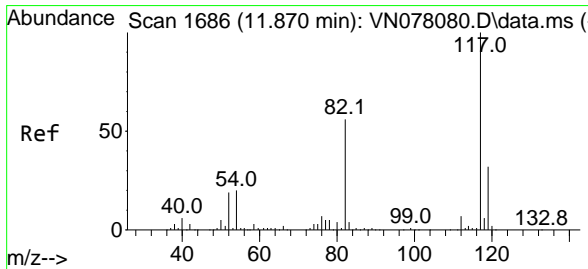
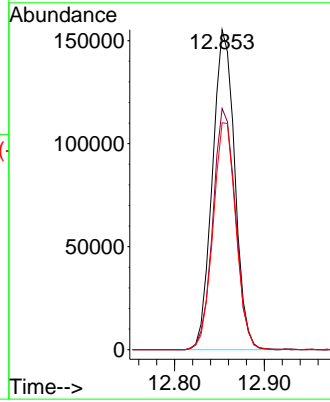
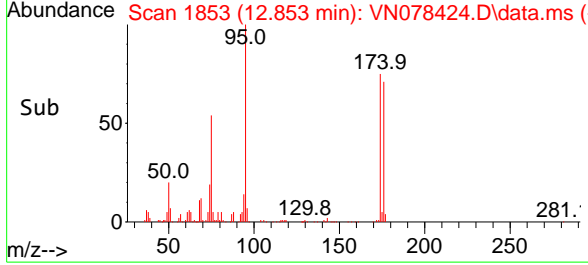


#62  
 4-Bromofluorobenzene  
 Concen: 45.637 ug/l  
 RT: 12.853 min Scan# 1853  
 Delta R.T. 0.000 min  
 Lab File: VN078424.D  
 Acq: 27 Jun 2023 18:17

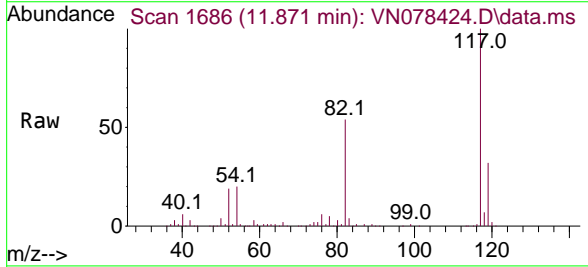
Instrument : MSVOA\_N  
 ClientSampleId : TW-2DL



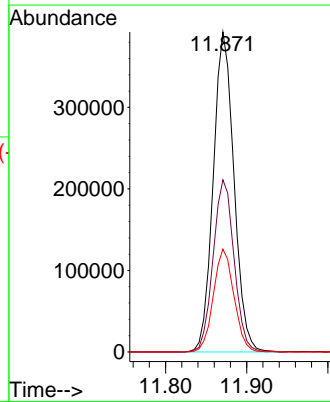
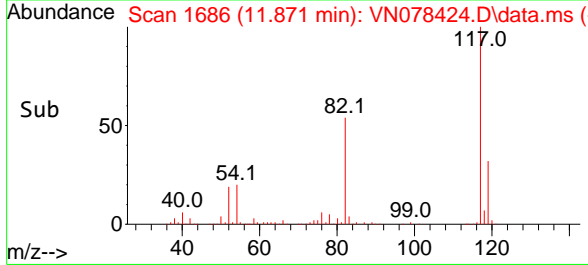
Tgt Ion: 95 Resp: 267929  
 Ion Ratio Lower Upper  
 95 100  
 174 76.5 0.0 143.8  
 176 72.8 0.0 135.8

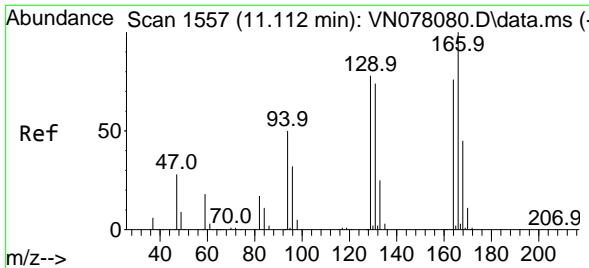


#63  
 Chlorobenzene-d5  
 Concen: 50.000 ug/l  
 RT: 11.871 min Scan# 1686  
 Delta R.T. 0.000 min  
 Lab File: VN078424.D  
 Acq: 27 Jun 2023 18:17



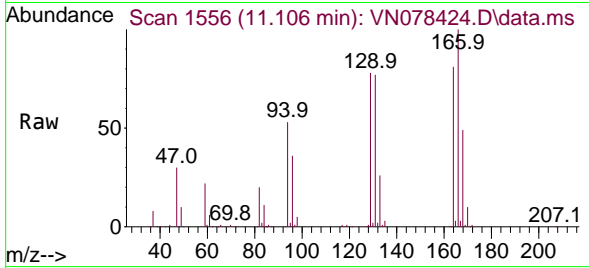
Tgt Ion: 117 Resp: 696664  
 Ion Ratio Lower Upper  
 117 100  
 82 53.8 44.0 66.0  
 119 32.2 25.6 38.4



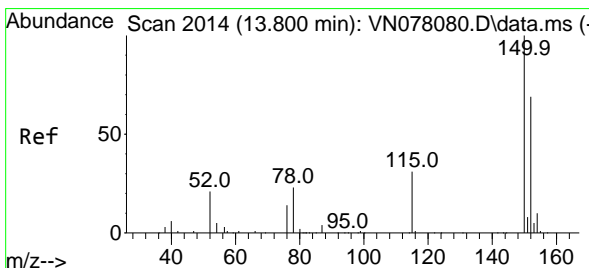
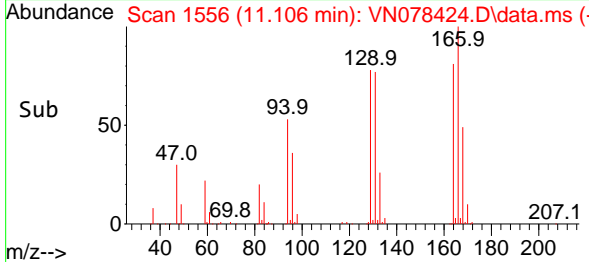
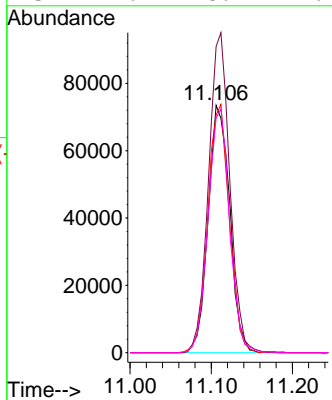


#64  
 Tetrachloroethene  
 Concen: 29.209 ug/l  
 RT: 11.106 min Scan# 11  
 Delta R.T. -0.006 min  
 Lab File: VN078424.D  
 Acq: 27 Jun 2023 18:17

Instrument :  
 MSVOA\_N  
 ClientSampleId :  
 TW-2DL



Tgt Ion:164 Resp: 135753  
 Ion Ratio Lower Upper  
 164 100  
 166 123.8 101.4 152.0  
 129 96.0 82.4 123.6  
 131 94.9 78.2 117.4



#72  
 1,4-Dichlorobenzene-d4  
 Concen: 50.000 ug/l  
 RT: 13.800 min Scan# 2014  
 Delta R.T. 0.000 min  
 Lab File: VN078424.D  
 Acq: 27 Jun 2023 18:17

Tgt Ion:152 Resp: 189239  
 Ion Ratio Lower Upper  
 152 100  
 115 60.0 32.3 96.8  
 150 155.9 0.0 355.8

