

Data Path : Z:\VOASRV\HPCHEM1\MSVOA N\DATA\VN062818\
 Data File : VN049589.D
 Acq On : 28 Jun 2018 14:59
 Operator : MD\SY
 Sample : PB110627ZHE#12
 Misc : 5.00mL/MSVOA N/WATER
 ALS Vial : 9 Sample Multiplier: 1

Instrument :
 MSVOA_N
 ClientSampled :

Quant Time: Jun 29 01:38:01 2018
 Quant Method : Z:\VOASRV\HPCHEM1\MSVOA_N\METHODS\82N061618W.M
 Quant Title : SW846 8260
 QLast Update : Sat Jun 16 01:02:01 2018
 Response via : Initial Calibration

Internal Standards	R.T.	QIon	Response	Conc	Units	Dev(Min)
1) Pentafluorobenzene	7.67	168	1126579	50.00	ug/l	0.00
34) 1,4-Difluorobenzene	8.59	114	1846743	50.00	ug/l	0.00
63) Chlorobenzene-d5	11.41	117	1505693	50.00	ug/l	0.00
72) 1,4-Dichlorobenzene-d4	13.35	152	573991	50.00	ug/l	0.00

System Monitoring Compounds	R.T.	QIon	Response	Conc	Units	Dev(Min)
33) 1,2-Dichloroethane-d4	8.03	65	753863	50.45	ug/l	0.00
Spiked Amount				50.000		
Recovery						= 100.90%
35) Dibromofluoromethane	7.59	113	624752	41.81	ug/l	0.00
Spiked Amount				50.000		
Recovery						= 83.62%
50) Toluene-d8	10.09	98	2465681	43.34	ug/l	0.00
Spiked Amount				50.000		
Recovery						= 86.68%
62) 4-Bromofluorobenzene	12.40	95	704191	37.44	ug/l	0.00
Spiked Amount				50.000		
Recovery						= 74.88%

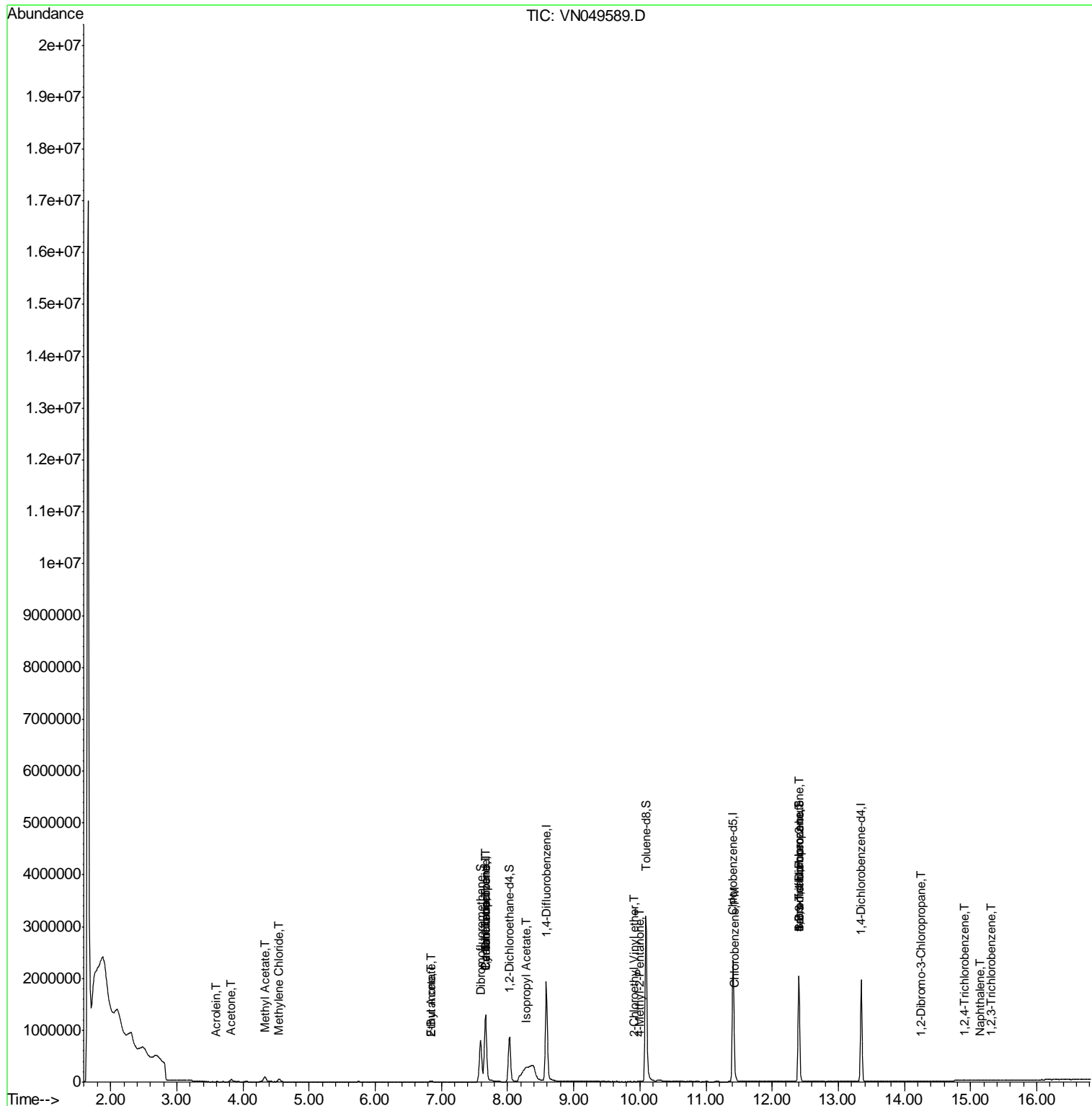
Target Compounds	R.T.	QIon	Response	Conc	Units	Qvalue
13) Acrolein	3.60	56	1103	1.20	ug/l	86
16) Acetone	3.82	43	78889	21.74	ug/l	99
18) Methyl Acetate	4.33	43	181553	16.41	ug/l	96
20) Methylene Chloride	4.54	84	35534	2.35	ug/l	92
25) 2-Butanone	6.84	43	9844	2.02	ug/l	97
31) Cyclohexane	7.66	56	20571	0.76	ug/l #	1
36) 1,1-Dichloropropene	7.67	75	78170	3.69	ug/l #	51
37) Ethyl Acetate	6.84	43	9844	0.86	ug/l #	71
38) Carbon Tetrachloride	7.67	117	100585	4.59	ug/l #	17
43) Isopropyl Acetate	8.28	43	466668	21.23	ug/l #	64
51) 4-Methyl-2-Pentanone	9.99	43	7328	0.64	ug/l	90
58) 2-Chloroethyl Vinyl ether	9.90	63	31	14.33	ug/l #	51
65) Chlorobenzene	11.44	112	17659	0.46	ug/l	94
71) Bromoform	12.40	173	3949	0.42	ug/l #	1
75) 1,1,2,2-Tetrachloroethane	12.45	83	121	Below	Cal #	26
76) 1,2,3-Trichloropropane	12.40	75	340789	34.80	ug/l #	100
81) trans-1,4-Dichloro-2-buten	12.40	75	340789	109.98	ug/l #	9
90) Hexachloroethane	13.93	117	66	Below	Cal #	9
92) 1,2-Dibromo-3-Chloropropan	14.26	75	373	0.21	ug/l #	4
93) 1,2,4-Trichlorobenzene	14.92	180	638	4.80	ug/l #	72
95) Naphthalene	15.14	128	1965	2.20	ug/l #	86
96) 1,2,3-Trichlorobenzene	15.32	180	334	3.49	ug/l	68

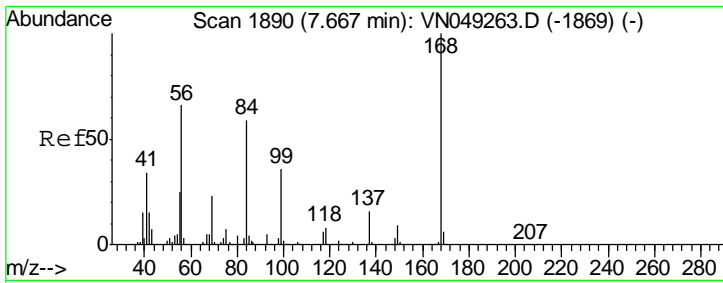
(#) = qualifier out of range (m) = manual integration (+) = signals summed

Data Path : Z:\VOASRV\HPCHEM1\MSVOA N\DATA\VN062818\
 Data File : VN049589.D
 Acq On : 28 Jun 2018 14:59
 Operator : MD\SY
 Sample : PB110627ZHE#12
 Misc : 5.00mL/MSVOA N/WATER
 ALS Vial : 9 Sample Multiplier: 1

Instrument :
 MSVOA_N
 ClientSampled :

Quant Time: Jun 29 01:38:01 2018
 Quant Method : Z:\VOASRV\HPCHEM1\MSVOA_N\METHODS\82N061618W.M
 Quant Title : SW846 8260
 QLast Update : Sat Jun 16 01:02:01 2018
 Response via : Initial Calibration

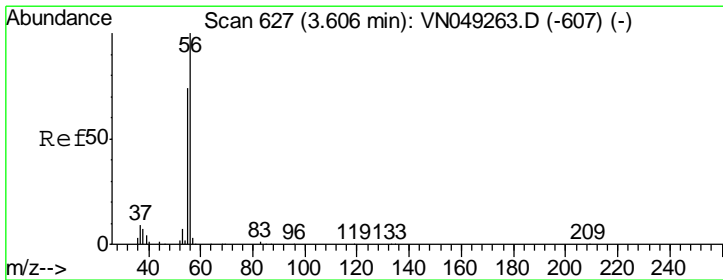
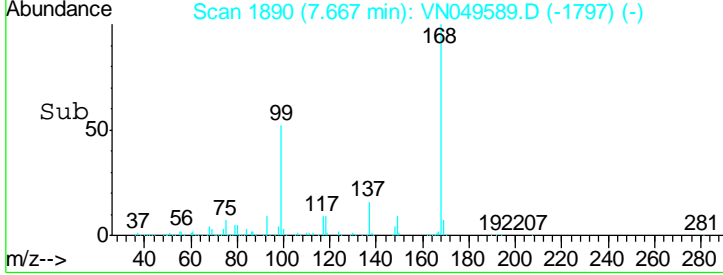
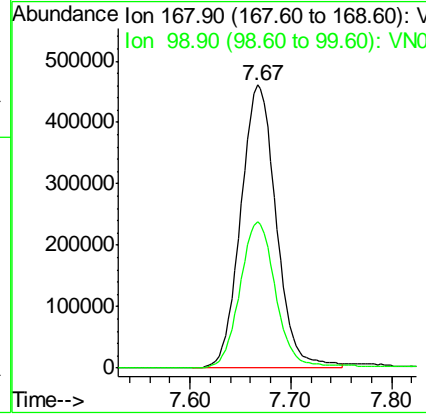
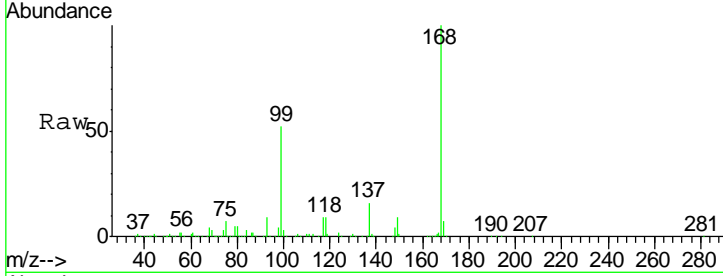




#1
 Pentafluorobenzene
 Concen: 50.00 ug/l
 RT: 7.67 min Scan# 1890
 Delta R.T. 0.00 min
 Lab File: VN049589.D
 Acq: 28 Jun 2018 14:59

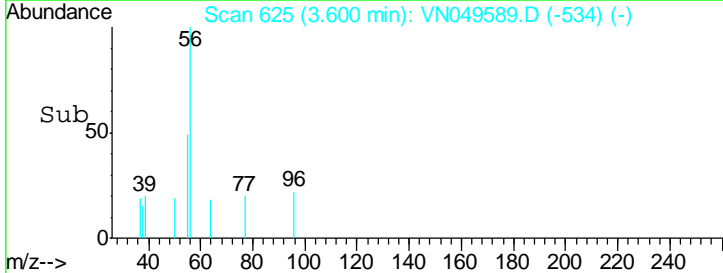
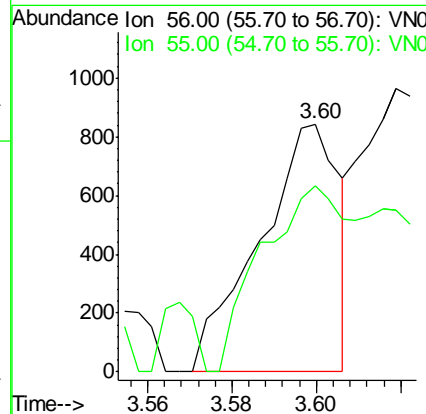
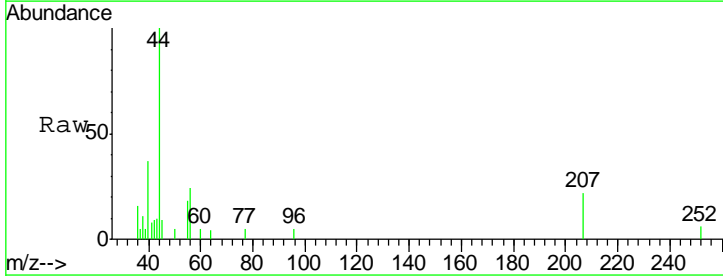
Instrument :
 MSVOA_N
 ClientSampled :

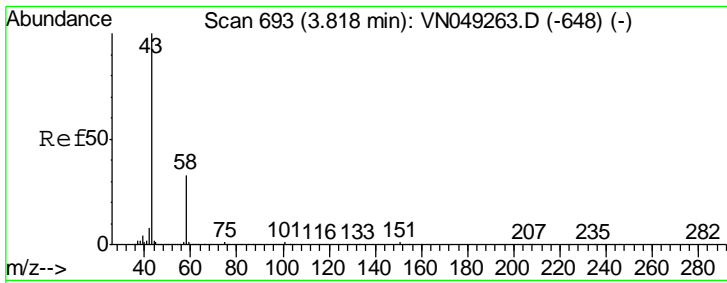
Tgt Ion: 168 Resp: 1126579
 Ion Ratio Lower Upper
 168 100
 99 51.6 45.8 68.6



#13
 Acrolein
 Concen: 1.20 ug/l
 RT: 3.60 min Scan# 625
 Delta R.T. -0.01 min
 Lab File: VN049589.D
 Acq: 28 Jun 2018 14:59

Tgt Ion: 56 Resp: 1103
 Ion Ratio Lower Upper
 56 100
 55 83.4 57.1 85.7

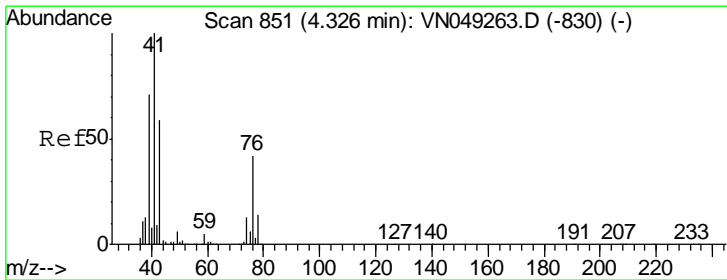
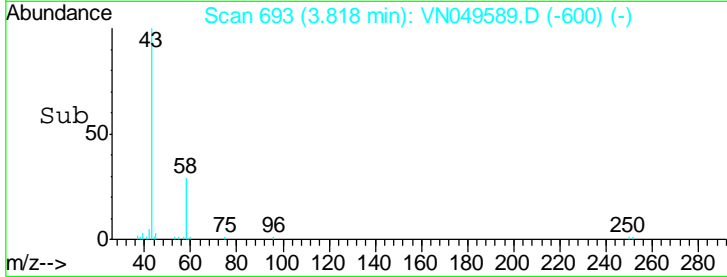
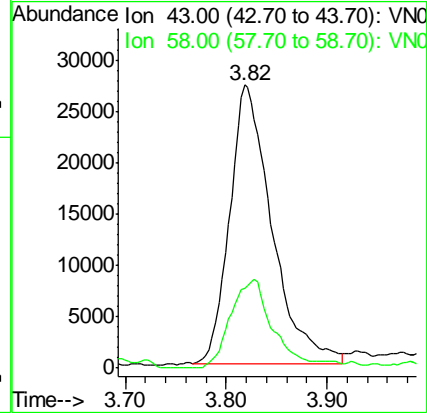
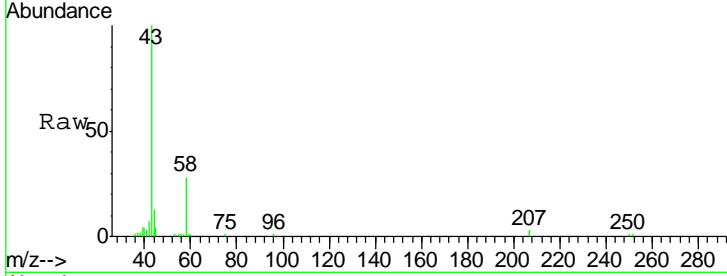




#16
 Acetone
 Concen: 21.74 ug/l
 RT: 3.82 min Scan# 693
 Delta R.T. 0.00 min
 Lab File: VN049589.D
 Acq: 28 Jun 2018 14:59

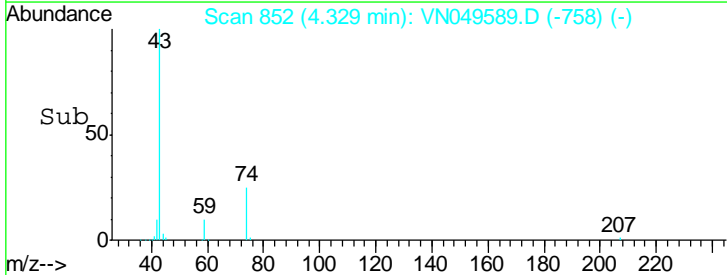
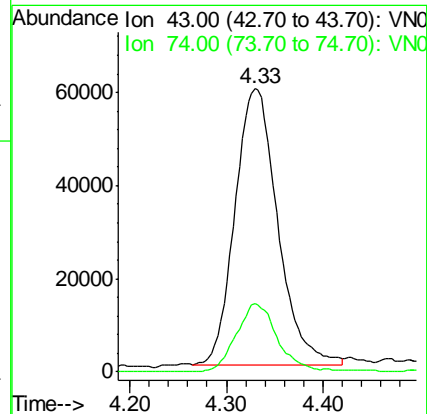
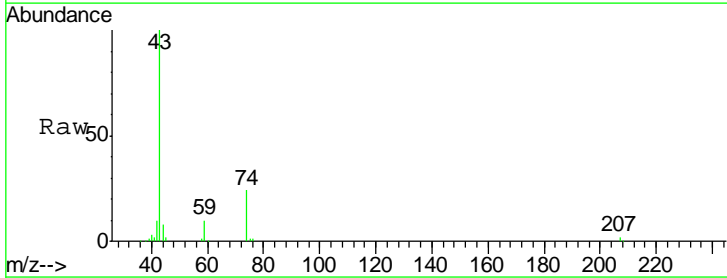
Instrument :
 MSVOA_N
 ClientSampled :

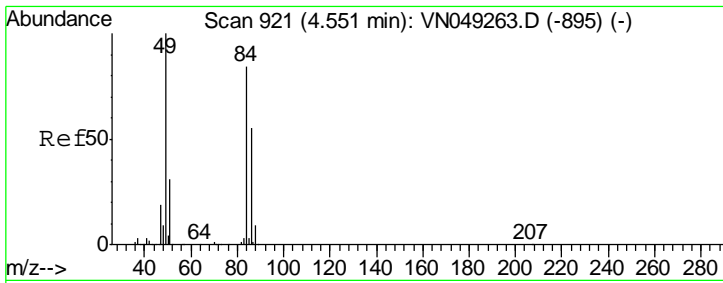
Tgt Ion	Resp	Lower	Upper
43	100		
58	28.7	22.4	33.6



#18
 Methyl Acetate
 Concen: 16.41 ug/l
 RT: 4.33 min Scan# 852
 Delta R.T. 0.00 min
 Lab File: VN049589.D
 Acq: 28 Jun 2018 14:59

Tgt Ion	Resp	Lower	Upper
43	100		
74	23.8	17.4	26.0

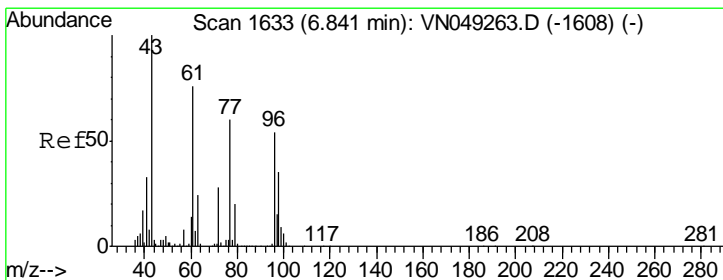
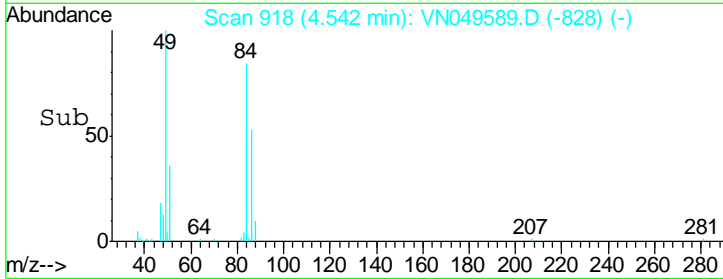
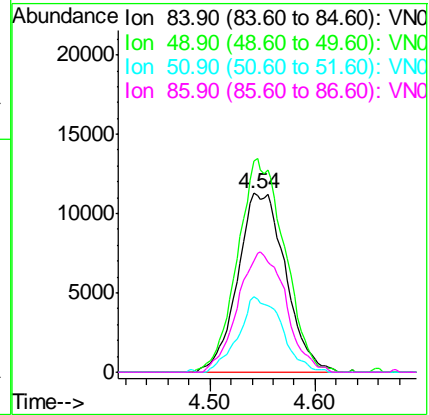
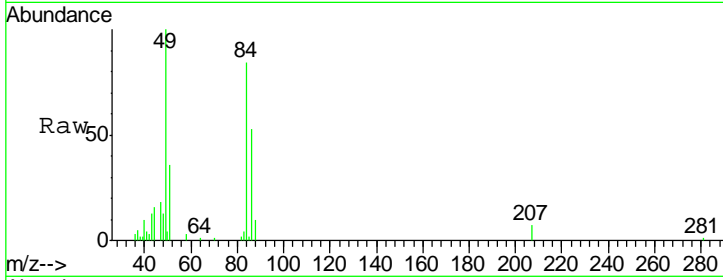




#20
 Methylene Chloride
 Concen: 2.35 ug/l
 RT: 4.54 min Scan# 918
 Delta R.T. -0.01 min
 Lab File: VN049589.D
 Acq: 28 Jun 2018 14:59

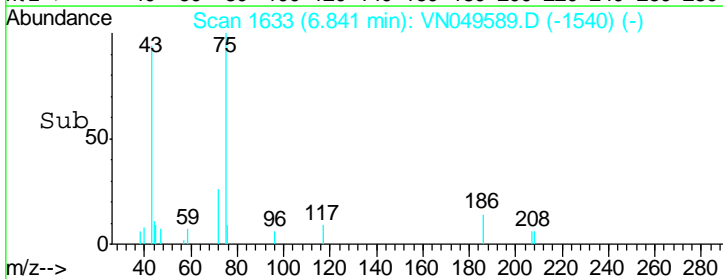
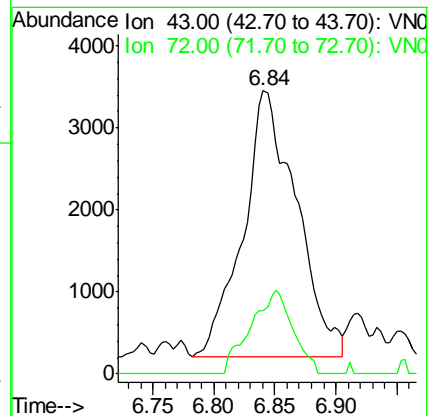
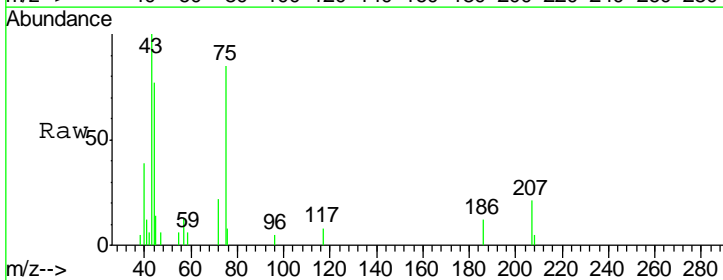
Instrument :
 MSVOA_N
 ClientSampled :

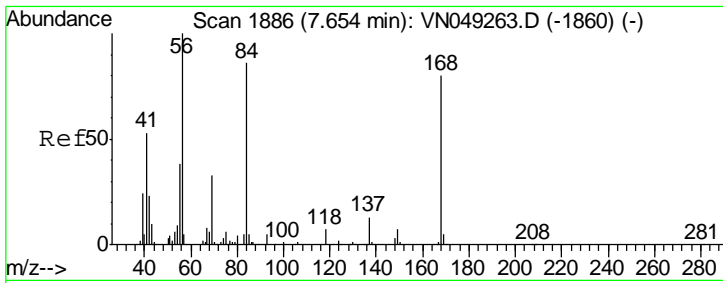
Tgt Ion	Resp	Lower	Upper
84	35534		
84	100		
49	118.4	106.9	160.3
51	42.6	32.7	49.1
86	62.6	49.8	74.8



#25
 2-Butanone
 Concen: 2.02 ug/l
 RT: 6.84 min Scan# 1633
 Delta R.T. 0.00 min
 Lab File: VN049589.D
 Acq: 28 Jun 2018 14:59

Tgt Ion	Resp	Lower	Upper
43	9844		
43	100		
72	23.7	20.2	30.2

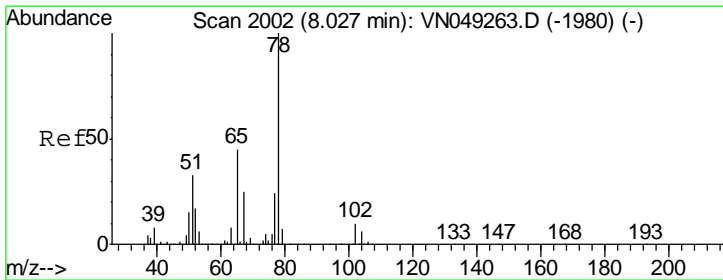
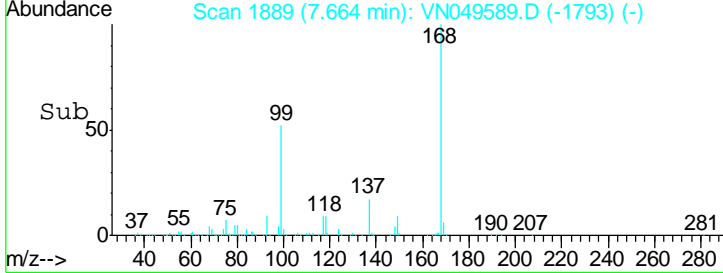
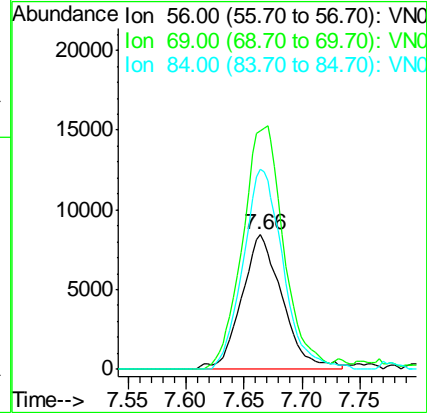
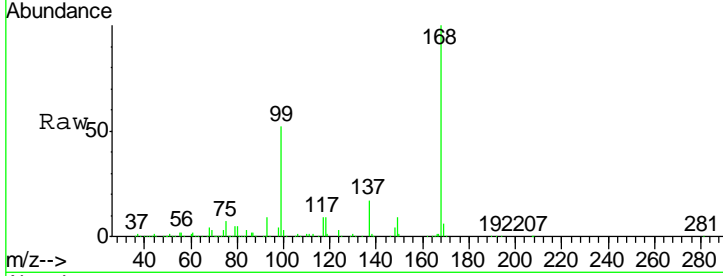




#31
 Cyclohexane
 Concen: 0.76 ug/l
 RT: 7.66 min Scan# 1889
 Delta R.T. 0.01 min
 Lab File: VN049589.D
 Acq: 28 Jun 2018 14:59

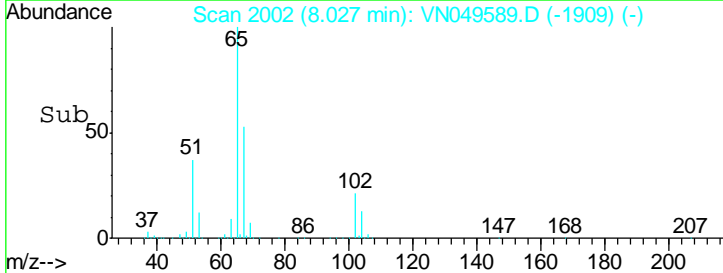
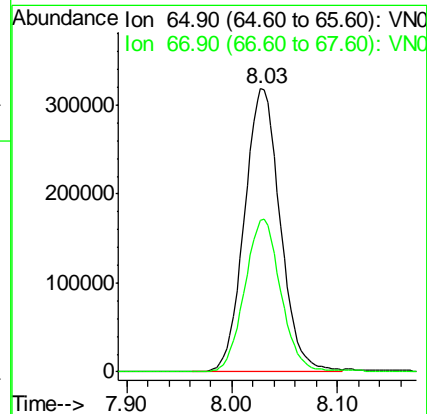
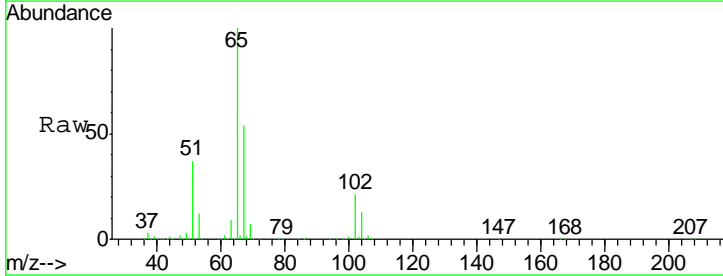
Instrument :
 MSVOA_N
 ClientSampled :

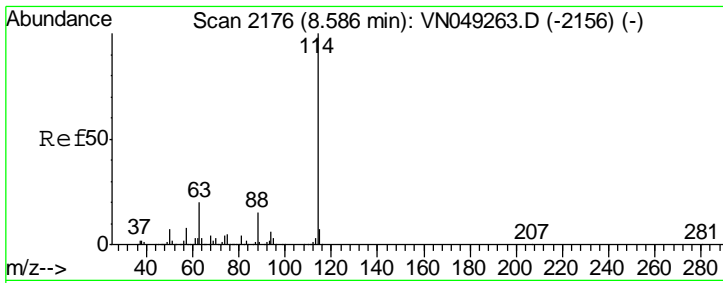
Tgt Ion	Resp	Lower	Upper
56	100		
69	177.8	25.0	37.4#
84	148.7	64.6	96.8#



#33
 1,2-Dichloroethane-d4
 Concen: 50.45 ug/l
 RT: 8.03 min Scan# 2002
 Delta R.T. 0.00 min
 Lab File: VN049589.D
 Acq: 28 Jun 2018 14:59

Tgt Ion	Resp	Lower	Upper
65	100		
67	54.3	0.0	103.8



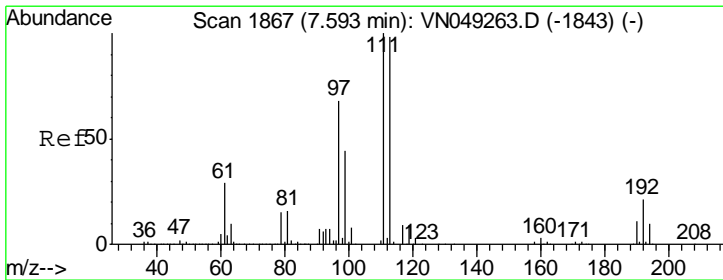
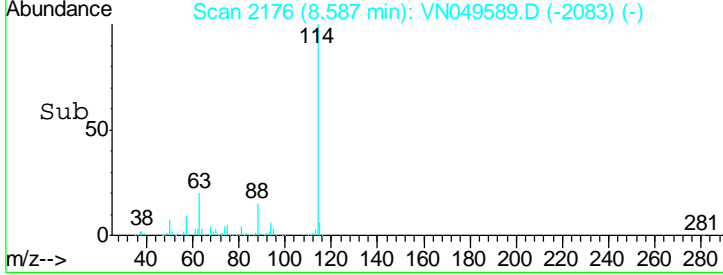
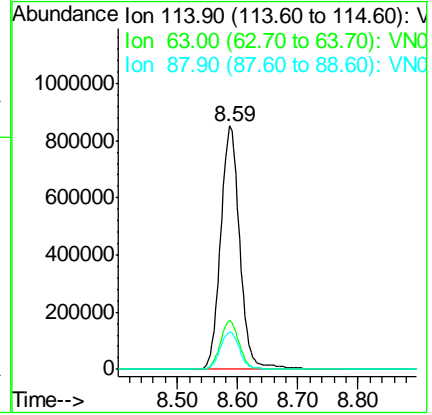
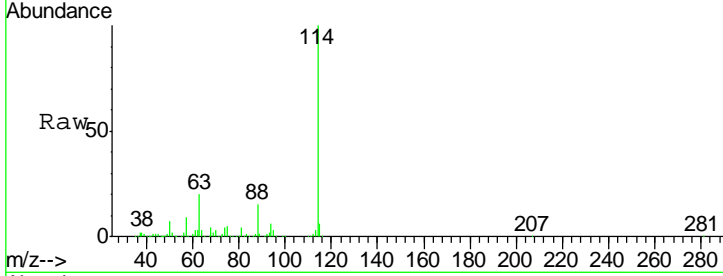


#34
 1,4-Difluorobenzene
 Concen: 50.00 ug/l
 RT: 8.59 min Scan# 2176
 Delta R.T. 0.00 min
 Lab File: VN049589.D
 Acq: 28 Jun 2018 14:59

Instrument :
 MSVOA_N
 ClientSampled :

Tgt Ion:114 Resp: 1846743

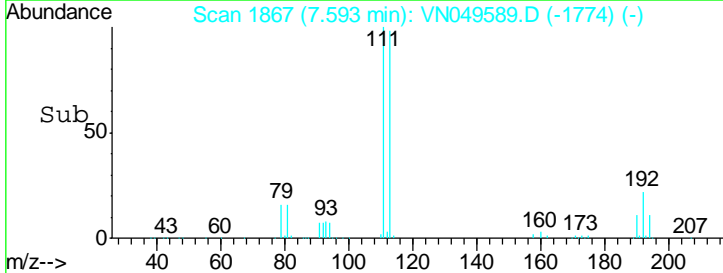
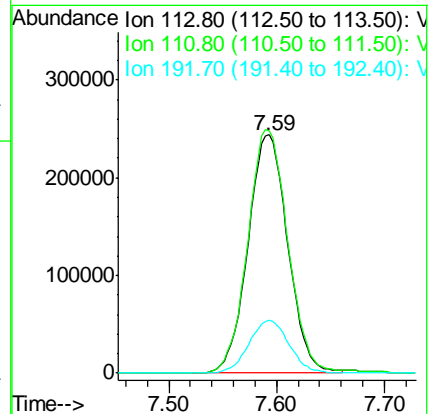
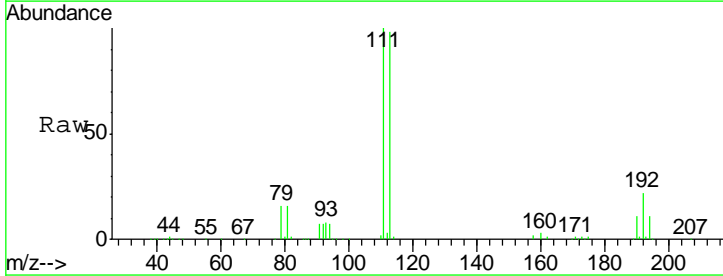
Ion	Ratio	Lower	Upper
114	100		
63	20.0	0.0	44.4
88	15.2	0.0	31.4

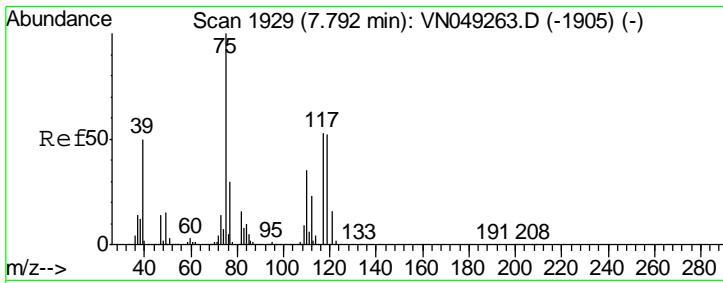


#35
 Dibromofluoromethane
 Concen: 41.81 ug/l
 RT: 7.59 min Scan# 1867
 Delta R.T. 0.00 min
 Lab File: VN049589.D
 Acq: 28 Jun 2018 14:59

Tgt Ion:113 Resp: 624752

Ion	Ratio	Lower	Upper
113	100		
111	103.4	82.4	123.6
192	22.5	15.0	22.6

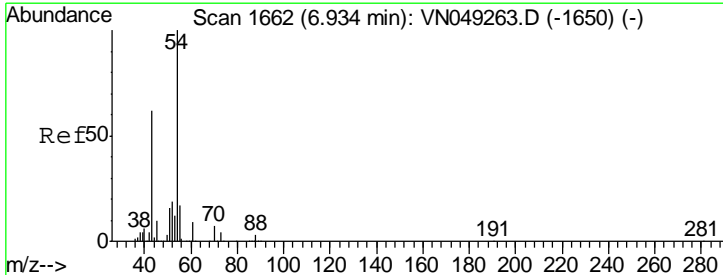
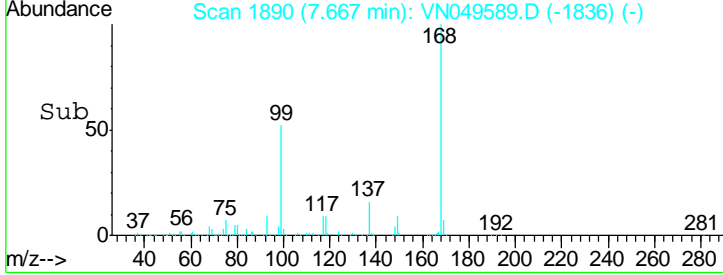
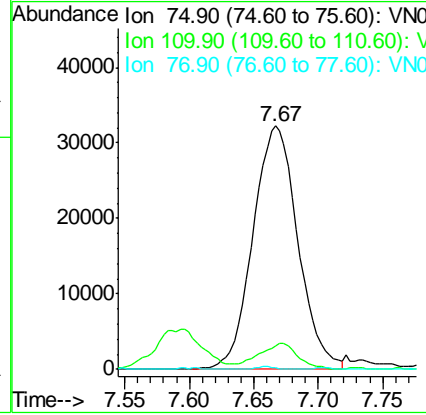
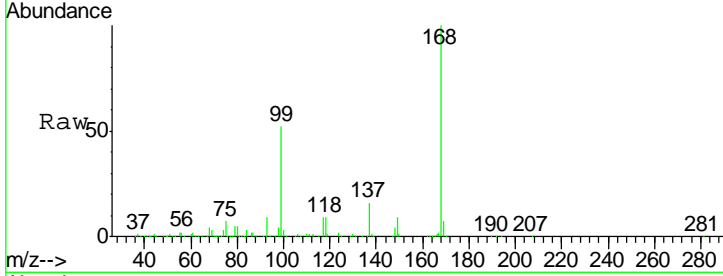




#36
 1,1-Dichloropropene
 Concen: 3.69 ug/l
 RT: 7.67 min Scan# 1890
 Delta R.T. -0.13 min
 Lab File: VN049589.D
 Acq: 28 Jun 2018 14:59

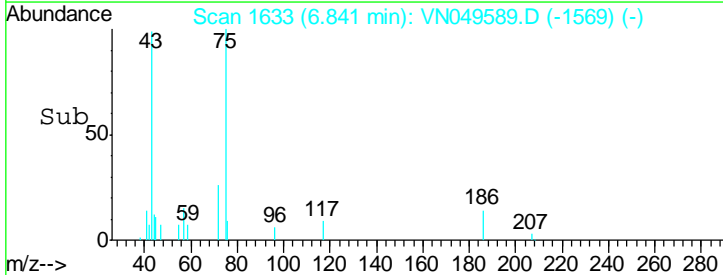
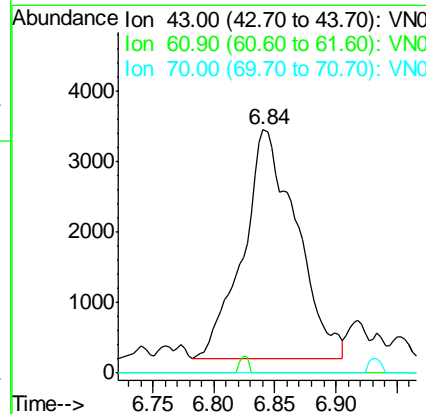
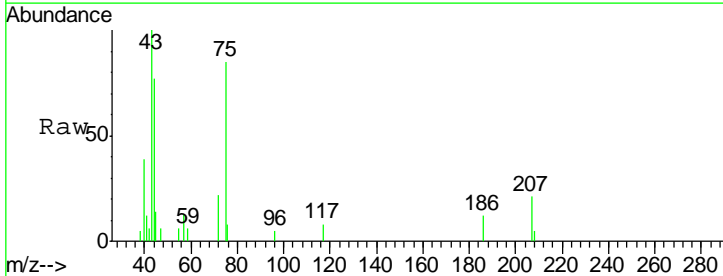
Instrument :
 MSVOA_N
 ClientSampled :

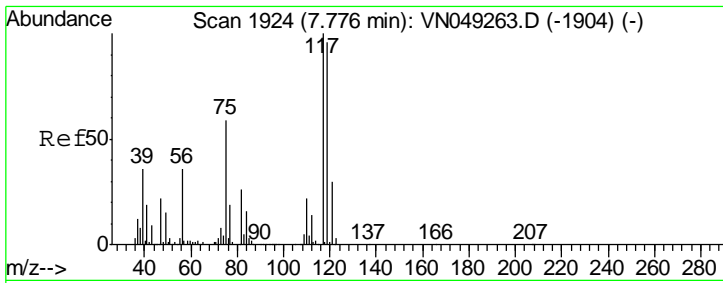
Tgt Ion	Resp	Lower	Upper
75	100		
110	9.4	17.0	50.9#
77	0.4	24.4	36.6#



#37
 Ethyl Acetate
 Concen: 0.86 ug/l
 RT: 6.84 min Scan# 1633
 Delta R.T. -0.09 min
 Lab File: VN049589.D
 Acq: 28 Jun 2018 14:59

Tgt Ion	Resp	Lower	Upper
43	100		
61	1.2	11.0	16.4#
70	0.0	7.2	10.8#

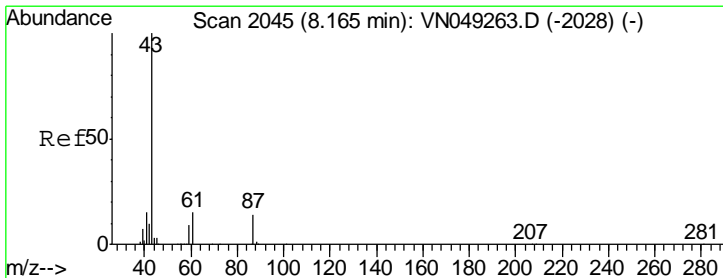
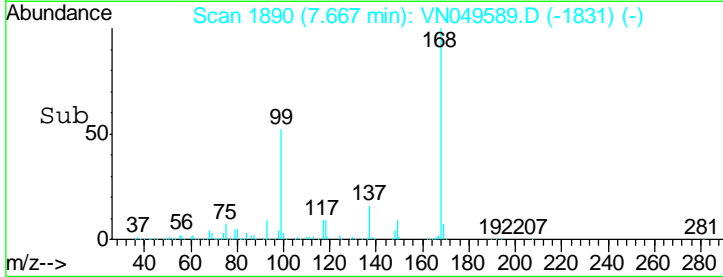
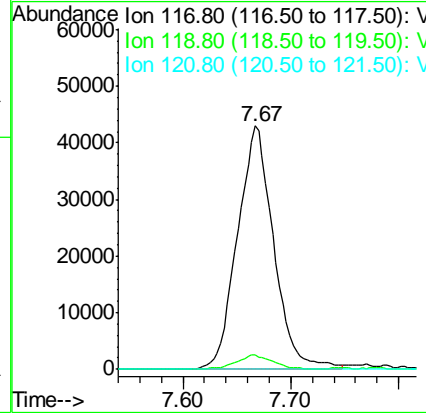
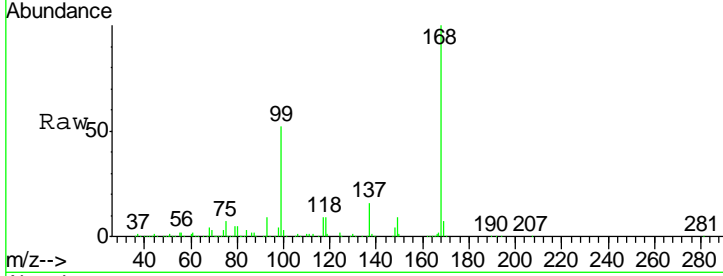




#38
 Carbon Tetrachloride
 Concen: 4.59 ug/l
 RT: 7.67 min Scan# 1890
 Delta R.T. -0.11 min
 Lab File: VN049589.D
 Acq: 28 Jun 2018 14:59

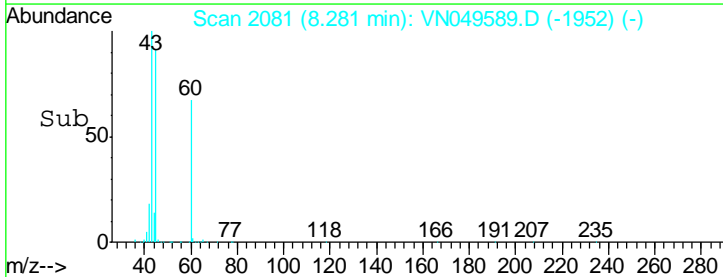
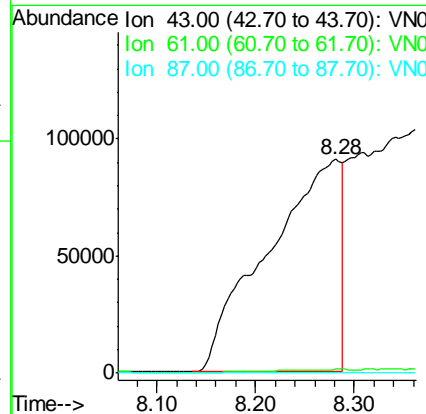
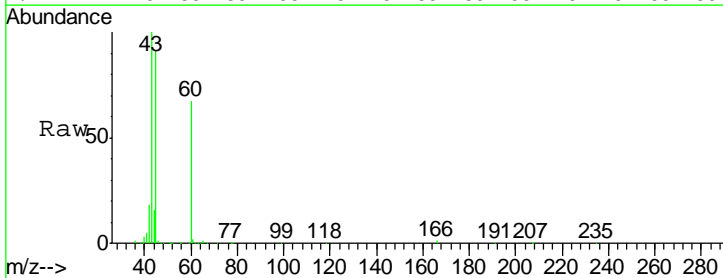
Instrument :
 MSVOA_N
 ClientSampled :

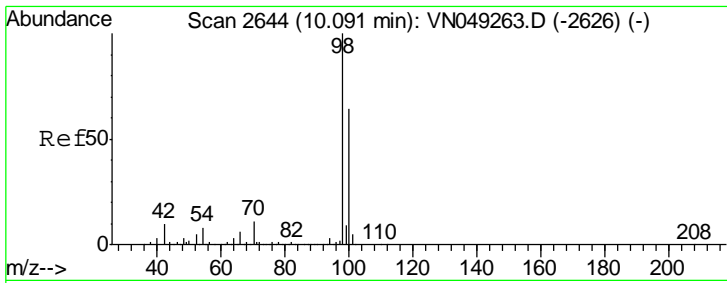
Tgt Ion	Resp	Lower	Upper
117	100		
119	5.7	75.6	113.4#
121	0.0	24.7	37.1#



#43
 Isopropyl Acetate
 Concen: 21.23 ug/l
 RT: 8.28 min Scan# 2081
 Delta R.T. 0.12 min
 Lab File: VN049589.D
 Acq: 28 Jun 2018 14:59

Tgt Ion	Resp	Lower	Upper
43	100		
61	0.0	14.2	21.4#
87	0.0	9.4	14.0#

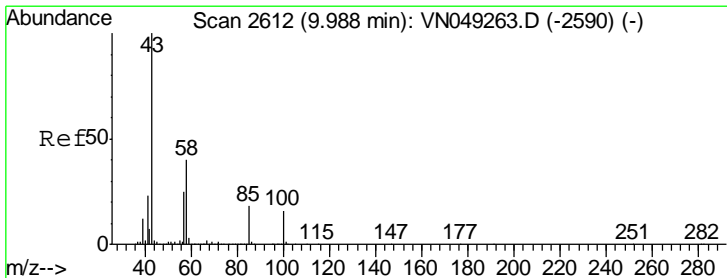
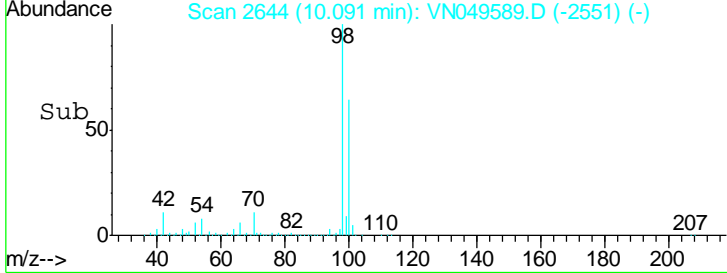
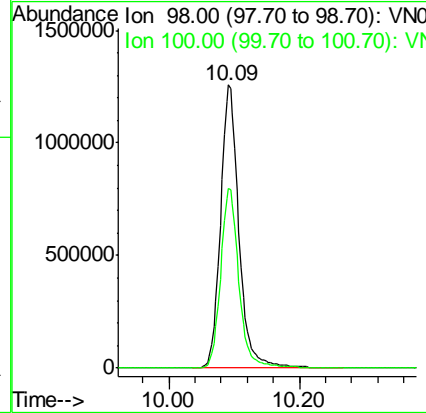
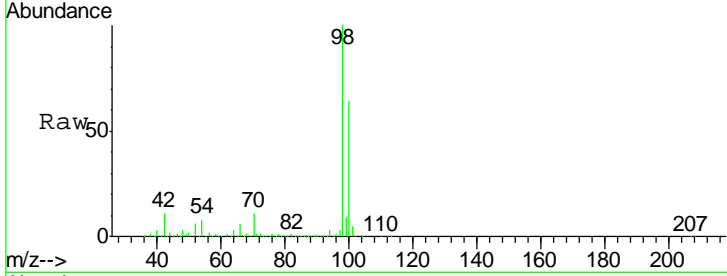




#50
 Toluene-d8
 Concen: 43.34 ug/l
 RT: 10.09 min Scan# 2644
 Delta R.T. 0.00 min
 Lab File: VN049589.D
 Acq: 28 Jun 2018 14:59

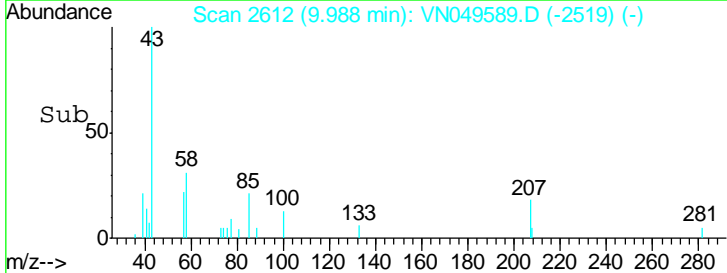
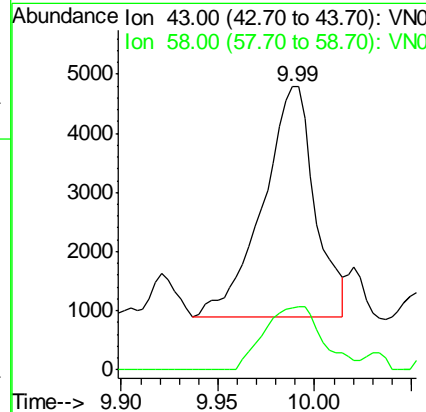
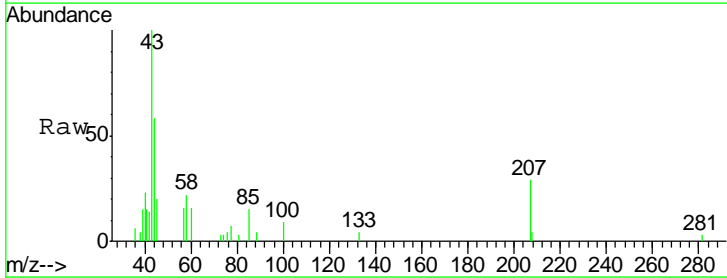
Instrument :
 MSVOA_N
 ClientSampled :

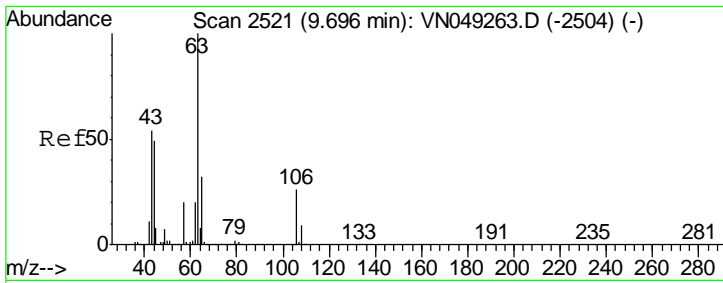
Tgt Ion: 98 Resp: 2465681
 Ion Ratio Lower Upper
 98 100
 100 63.3 49.8 74.8



#51
 4-Methyl-2-Pentanone
 Concen: 0.64 ug/l
 RT: 9.99 min Scan# 2612
 Delta R.T. 0.00 min
 Lab File: VN049589.D
 Acq: 28 Jun 2018 14:59

Tgt Ion: 43 Resp: 7328
 Ion Ratio Lower Upper
 43 100
 58 30.7 29.0 43.6

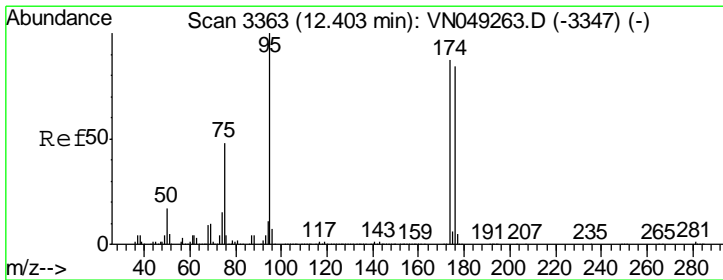
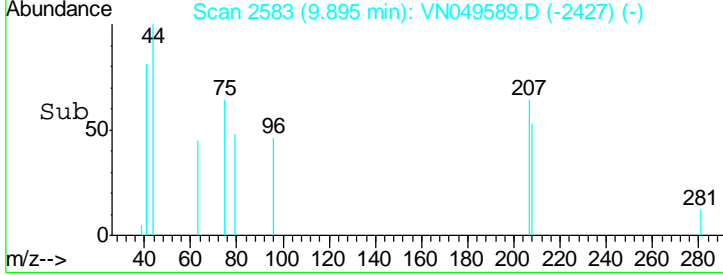
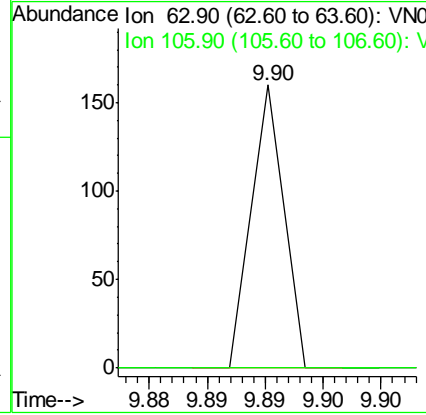
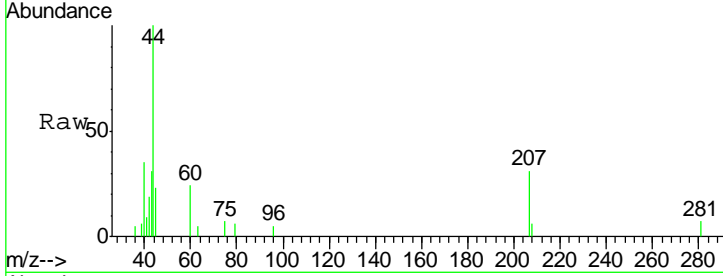




#58
 2-Chloroethyl Vinyl ether
 Concen: 14.33 ug/l
 RT: 9.90 min Scan# 2583
 Delta R.T. 0.20 min
 Lab File: VN049589.D
 Acq: 28 Jun 2018 14:59

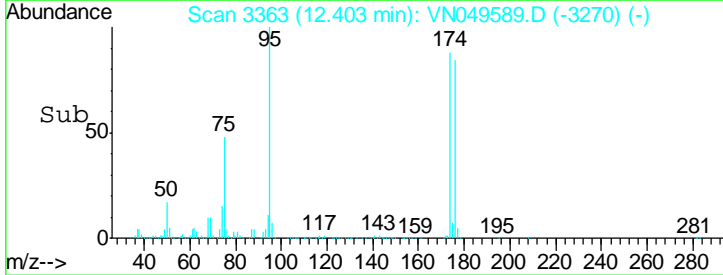
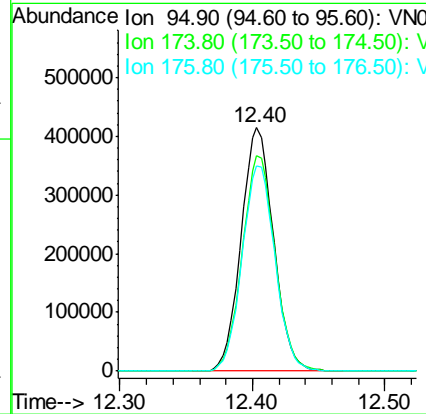
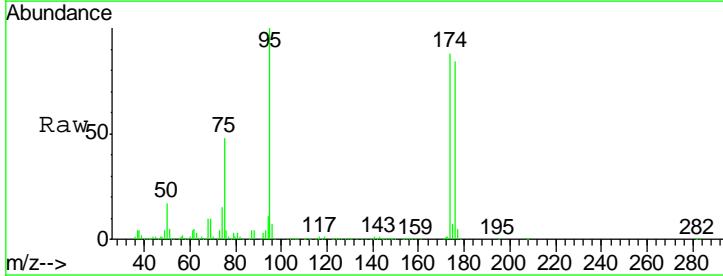
Instrument :
 MSVOA_N
 ClientSampled :

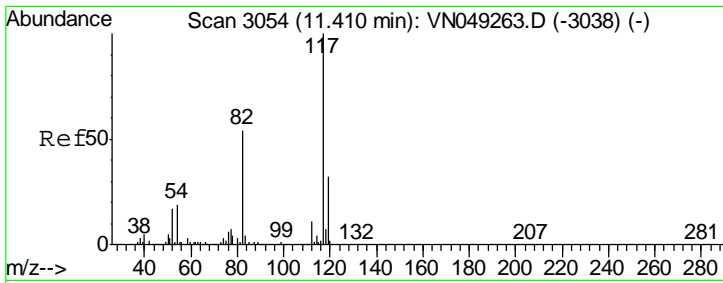
Tgt Ion	Resp	Lower	Upper
63	100		
106	0.0	19.4	29.2#



#62
 4-Bromofluorobenzene
 Concen: 37.44 ug/l
 RT: 12.40 min Scan# 3363
 Delta R.T. 0.00 min
 Lab File: VN049589.D
 Acq: 28 Jun 2018 14:59

Tgt Ion	Resp	Lower	Upper
95	100		
174	89.5	0.0	165.6
176	85.7	0.0	157.4



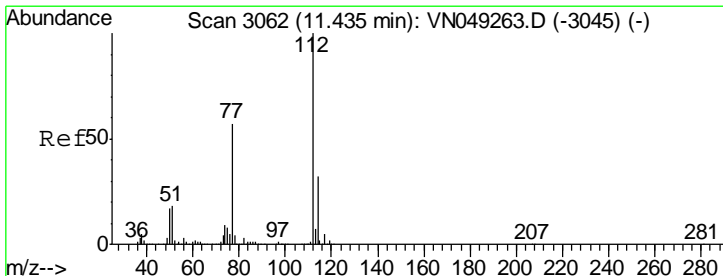
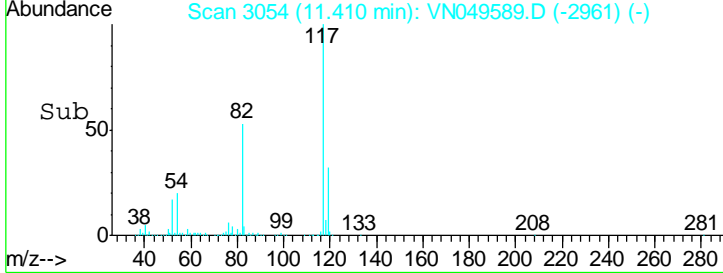
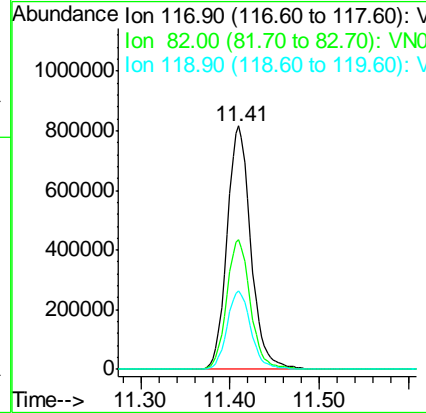
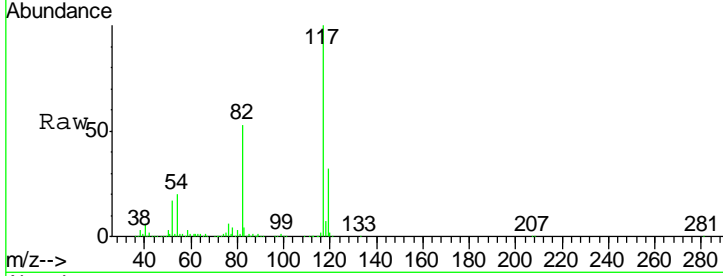


#63
 Chlorobenzene-d5
 Concen: 50.00 ug/l
 RT: 11.41 min Scan# 3054
 Delta R.T. 0.00 min
 Lab File: VN049589.D
 Acq: 28 Jun 2018 14:59

Instrument :
 MSVOA_N
 ClientSampled :

Tgt Ion: 117 Resp: 1505693

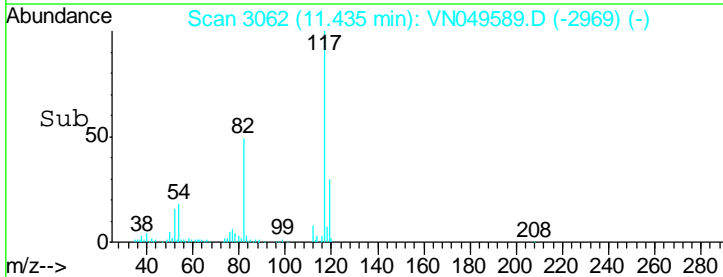
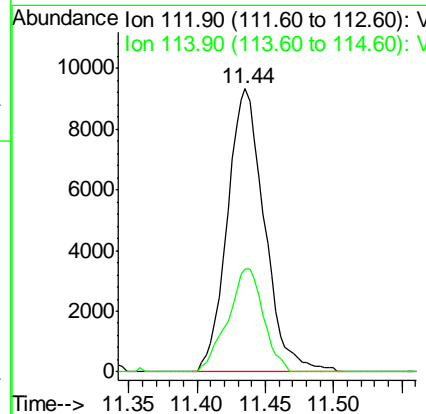
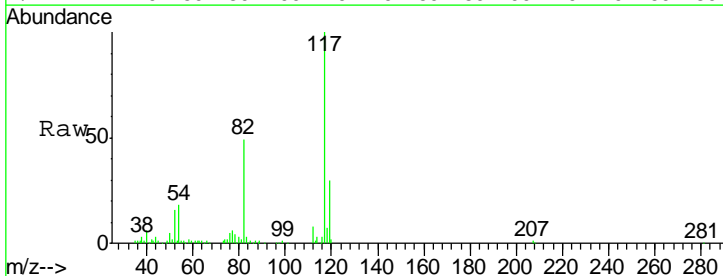
Ion	Ratio	Lower	Upper
117	100		
82	53.0	45.9	68.9
119	32.0	25.5	38.3

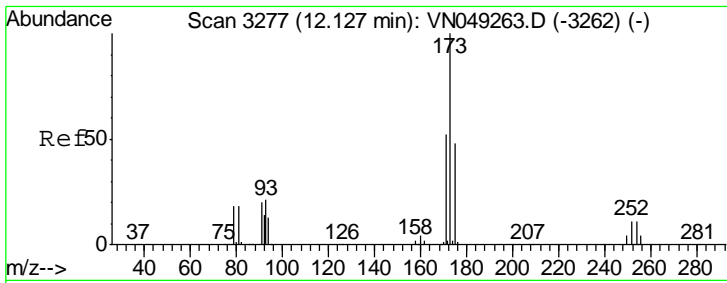


#65
 Chlorobenzene
 Concen: 0.46 ug/l
 RT: 11.44 min Scan# 3062
 Delta R.T. 0.00 min
 Lab File: VN049589.D
 Acq: 28 Jun 2018 14:59

Tgt Ion: 112 Resp: 17659

Ion	Ratio	Lower	Upper
112	100		
114	36.3	26.2	39.4

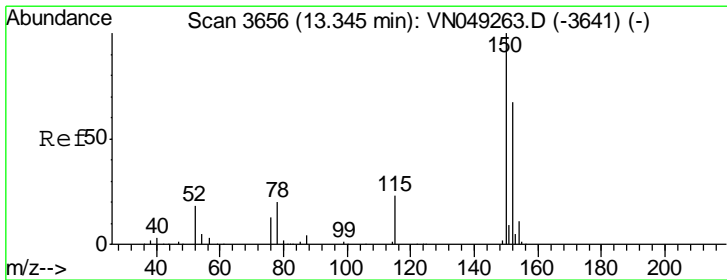
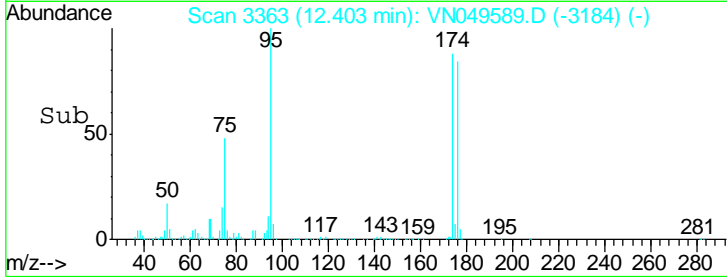
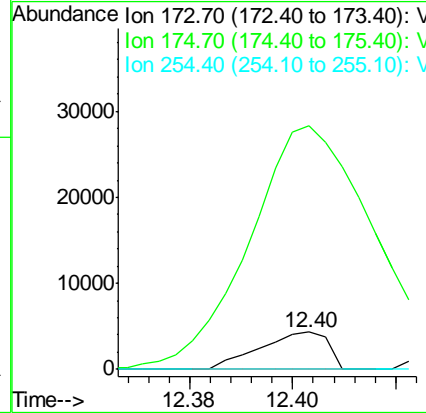
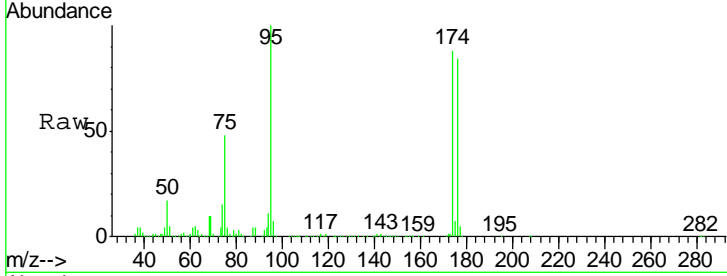




#71
 Bromoform
 Concen: 0.42 ug/l
 RT: 12.40 min Scan# 3363
 Delta R.T. 0.28 min
 Lab File: VN049589.D
 Acq: 28 Jun 2018 14:59

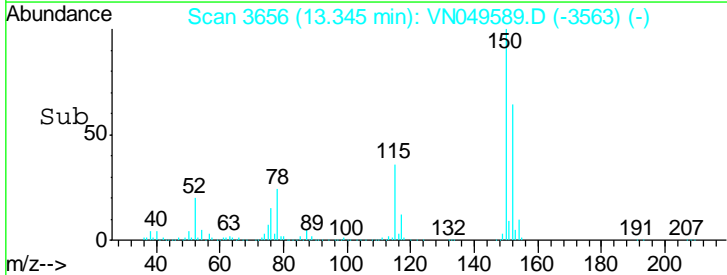
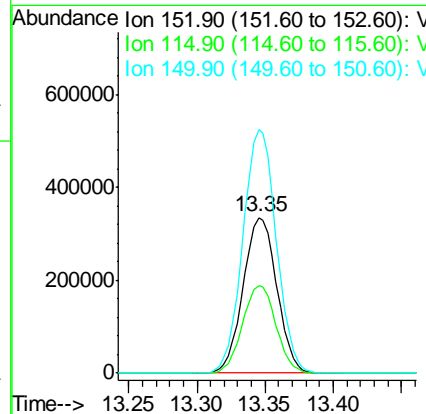
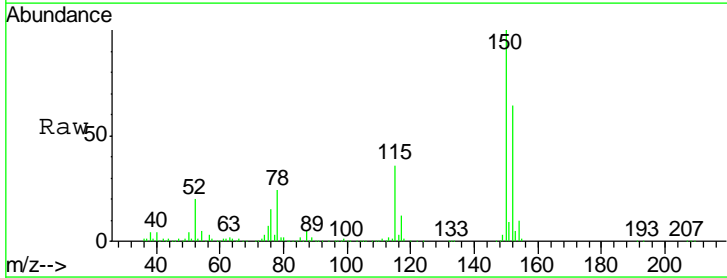
Instrument :
 MSVOA_N
 ClientSampled :

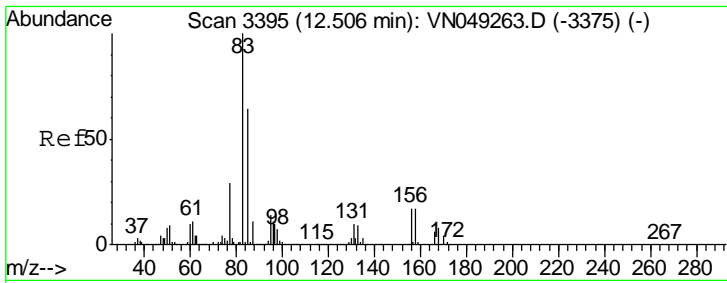
Tgt Ion	Resp	Lower	Upper
173	3949		
175	983.2	24.5	73.5#
254	0.0	0.1	0.1#



#72
 1,4-Dichlorobenzene-d4
 Concen: 50.00 ug/l
 RT: 13.35 min Scan# 3656
 Delta R.T. 0.00 min
 Lab File: VN049589.D
 Acq: 28 Jun 2018 14:59

Tgt Ion	Resp	Lower	Upper
152	573991		
115	56.0	28.7	86.1
150	155.4	0.0	351.0

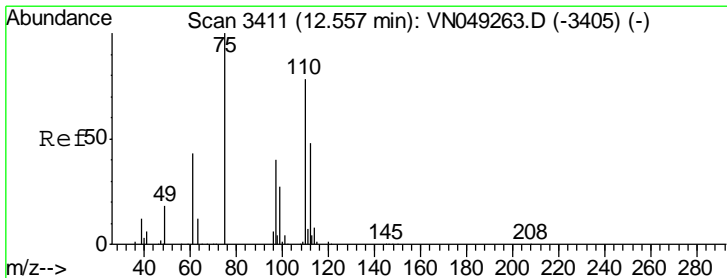
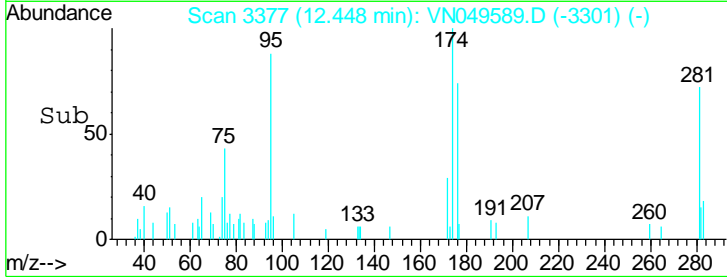
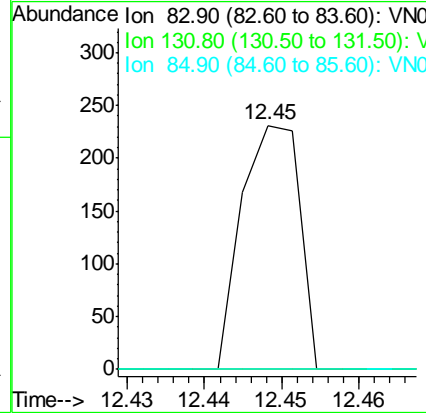
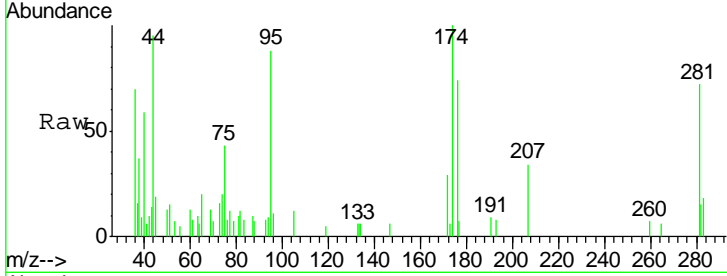




#75
 1,1,2,2-Tetrachloroethane
 Concen: Below Cal
 RT: 12.45 min Scan# 3377
 Delta R.T. -0.06 min
 Lab File: VN049589.D
 Acq: 28 Jun 2018 14:59

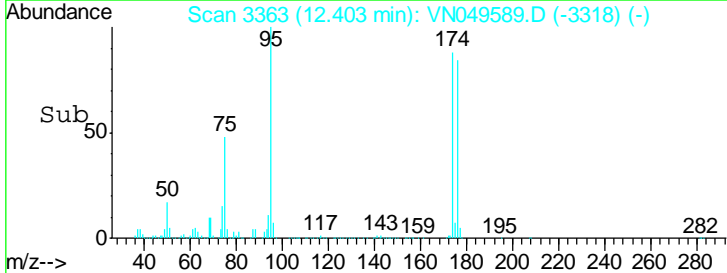
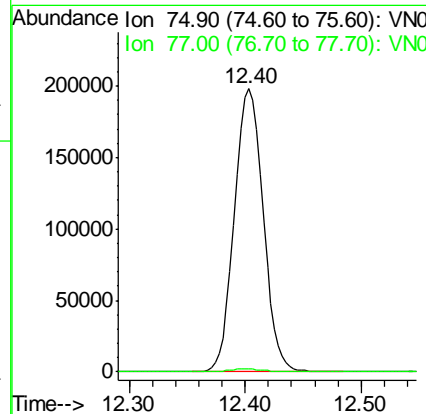
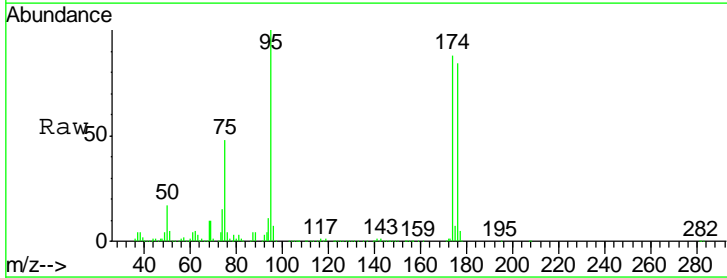
Instrument :
 MSVOA_N
 ClientSampled :

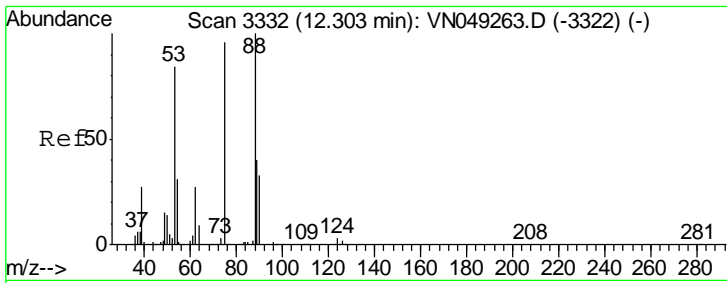
Tgt Ion	Resp	Lower	Upper
83	121		
83	100		
131	0.0	5.0	15.0#
85	0.0	32.0	96.0#



#76
 1,2,3-Trichloropropane
 Concen: 34.80 ug/l
 RT: 12.40 min Scan# 3363
 Delta R.T. -0.15 min
 Lab File: VN049589.D
 Acq: 28 Jun 2018 14:59

Tgt Ion	Resp	Lower	Upper
75	340789		
75	100		
77	1.4	0.0	0.0#

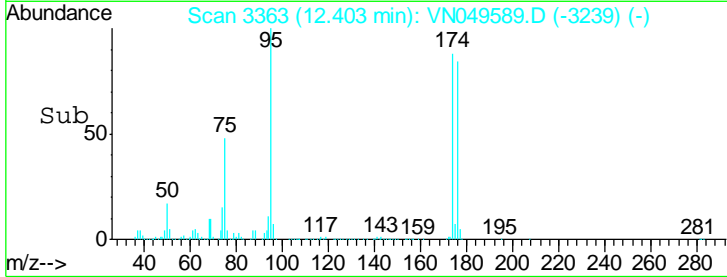
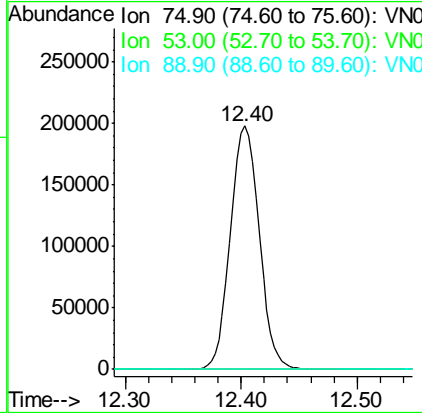
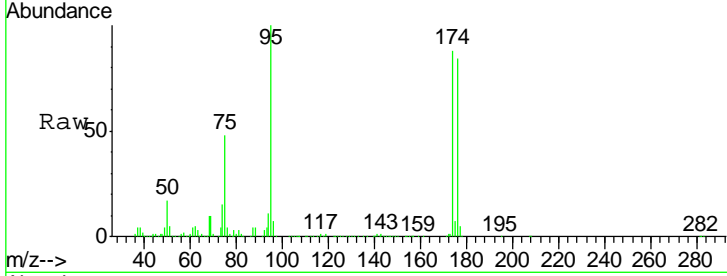




#81
 trans-1,4-Dichloro-2-butene
 Concen: 109.98 ug/l
 RT: 12.40 min Scan# 3363
 Delta R.T. 0.10 min
 Lab File: VN049589.D
 Acq: 28 Jun 2018 14:59

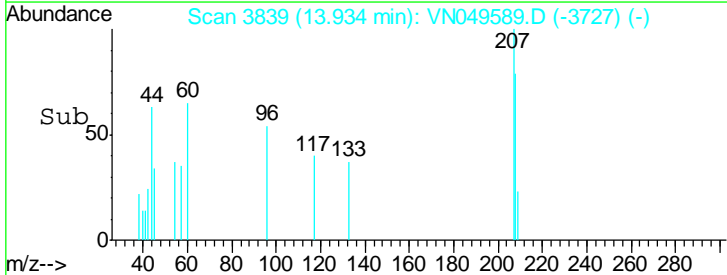
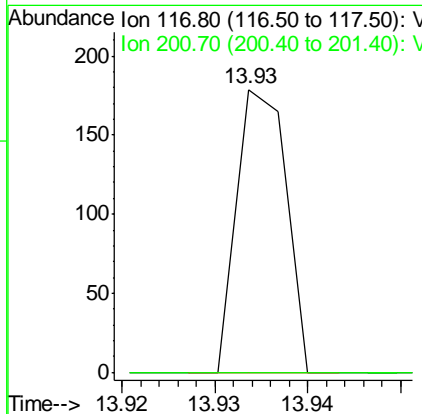
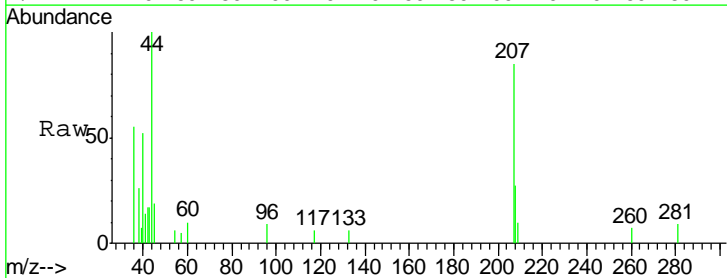
Instrument : MSVOA_N
 ClientSampled :

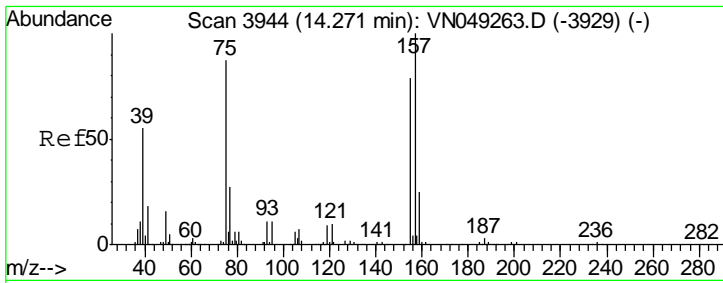
Tgt Ion	Resp	Lower	Upper
75	100		
53	0.2	82.7	124.1#
89	0.0	36.5	54.7#



#90
 Hexachloroethane
 Concen: Below Cal
 RT: 13.93 min Scan# 3839
 Delta R.T. 0.06 min
 Lab File: VN049589.D
 Acq: 28 Jun 2018 14:59

Tgt Ion	Resp	Lower	Upper
117	100		
201	0.0	40.1	120.2#

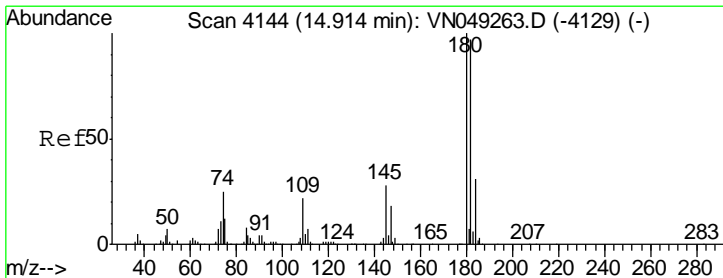
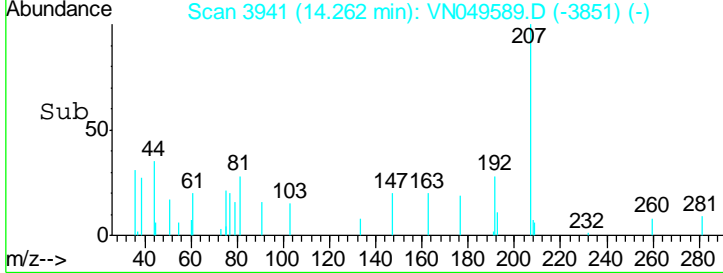
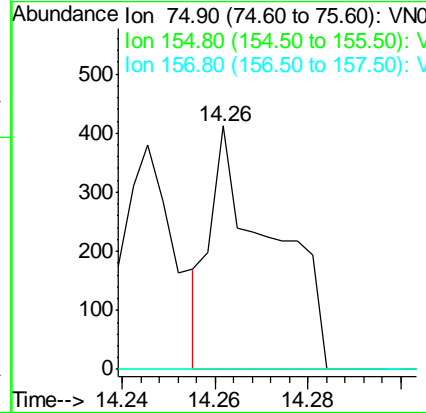
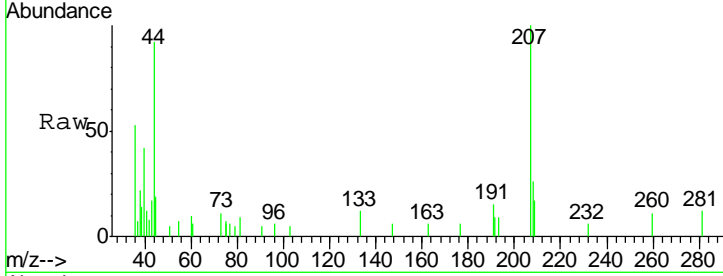




#92
 1,2-Dibromo-3-Chloropropane
 Concen: 0.21 ug/l
 RT: 14.26 min Scan# 3941
 Delta R.T. -0.01 min
 Lab File: VN049589.D
 Acq: 28 Jun 2018 14:59

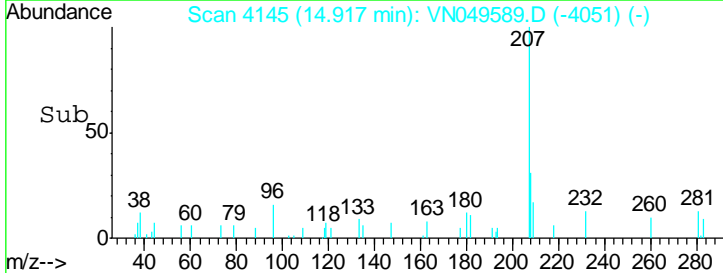
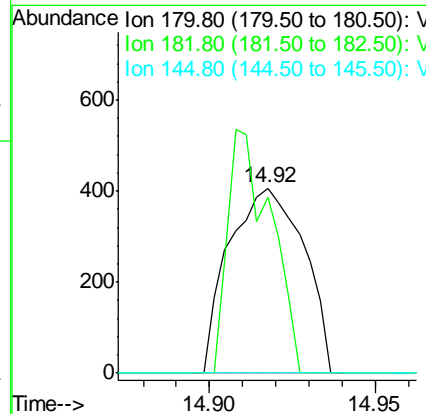
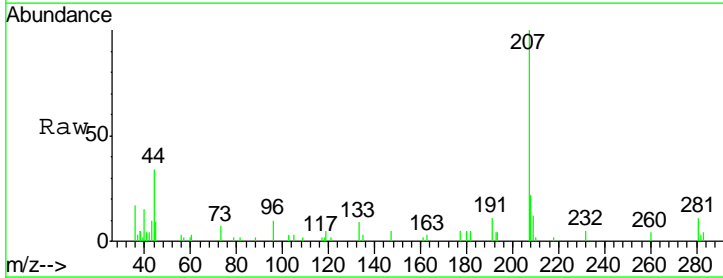
Instrument : MSVOA_N
 ClientSampled :

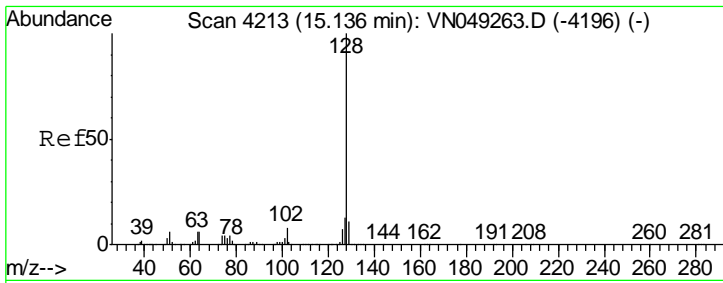
Tgt Ion	Resp	Lower	Upper
75	100		
155	0.0	38.8	116.3#
157	0.0	51.0	153.1#



#93
 1,2,4-Trichlorobenzene
 Concen: 4.80 ug/l
 RT: 14.92 min Scan# 4145
 Delta R.T. 0.00 min
 Lab File: VN049589.D
 Acq: 28 Jun 2018 14:59

Tgt Ion	Resp	Lower	Upper
180	100		
182	75.4	46.9	140.8
145	0.0	14.7	44.1#

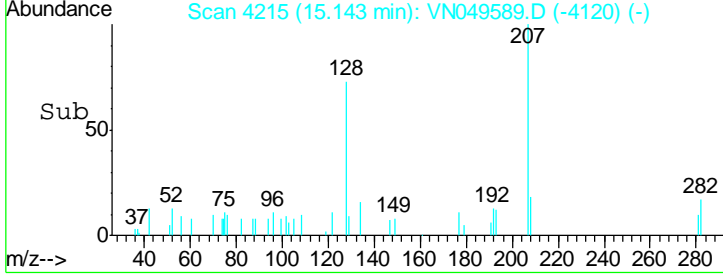
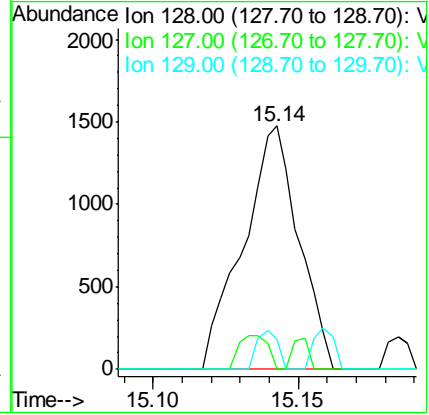
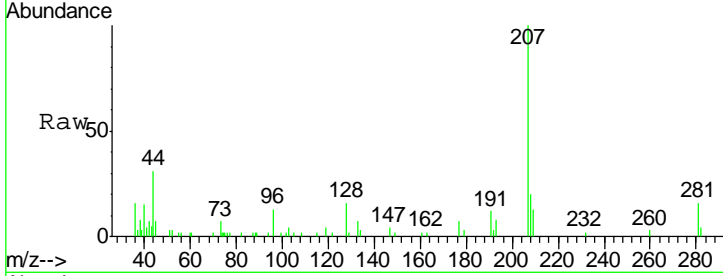




#95
 Naphthalene
 Concen: 2.20 ug/l
 RT: 15.14 min Scan# 4215
 Delta R.T. 0.01 min
 Lab File: VN049589.D
 Acq: 28 Jun 2018 14:59

Instrument :
 MSVOA_N
 ClientSampled :

Tgt Ion	Resp	Lower	Upper
128	1965		
127	7.2	10.6	16.0#
129	5.9	8.5	12.7#



#96
 1,2,3-Trichlorobenzene
 Concen: 3.49 ug/l
 RT: 15.32 min Scan# 4269
 Delta R.T. -0.00 min
 Lab File: VN049589.D
 Acq: 28 Jun 2018 14:59

Tgt Ion	Resp	Lower	Upper
180	334		
182	129.3	47.3	141.8
145	20.7	15.6	46.7

