

Data Path : Z:\VOASRV\HPCHEM1\MSVOA N\DATA\VN062818\
 Data File : VN049623.D
 Acq On : 29 Jun 2018 6:26
 Operator : MD\SY
 Sample : J3612-01
 Misc : 5.00mL/MSVOA N/WATER
 ALS Vial : 45 Sample Multiplier: 1

Instrument :
 MSVOA_N
 ClientSampleId :
 S-1(5-5.5)

Quant Time: Jun 29 09:10:15 2018
 Quant Method : Z:\VOASRV\HPCHEM1\MSVOA_N\METHODS\82N061618W.M
 Quant Title : SW846 8260
 QLast Update : Sat Jun 16 01:02:01 2018
 Response via : Initial Calibration

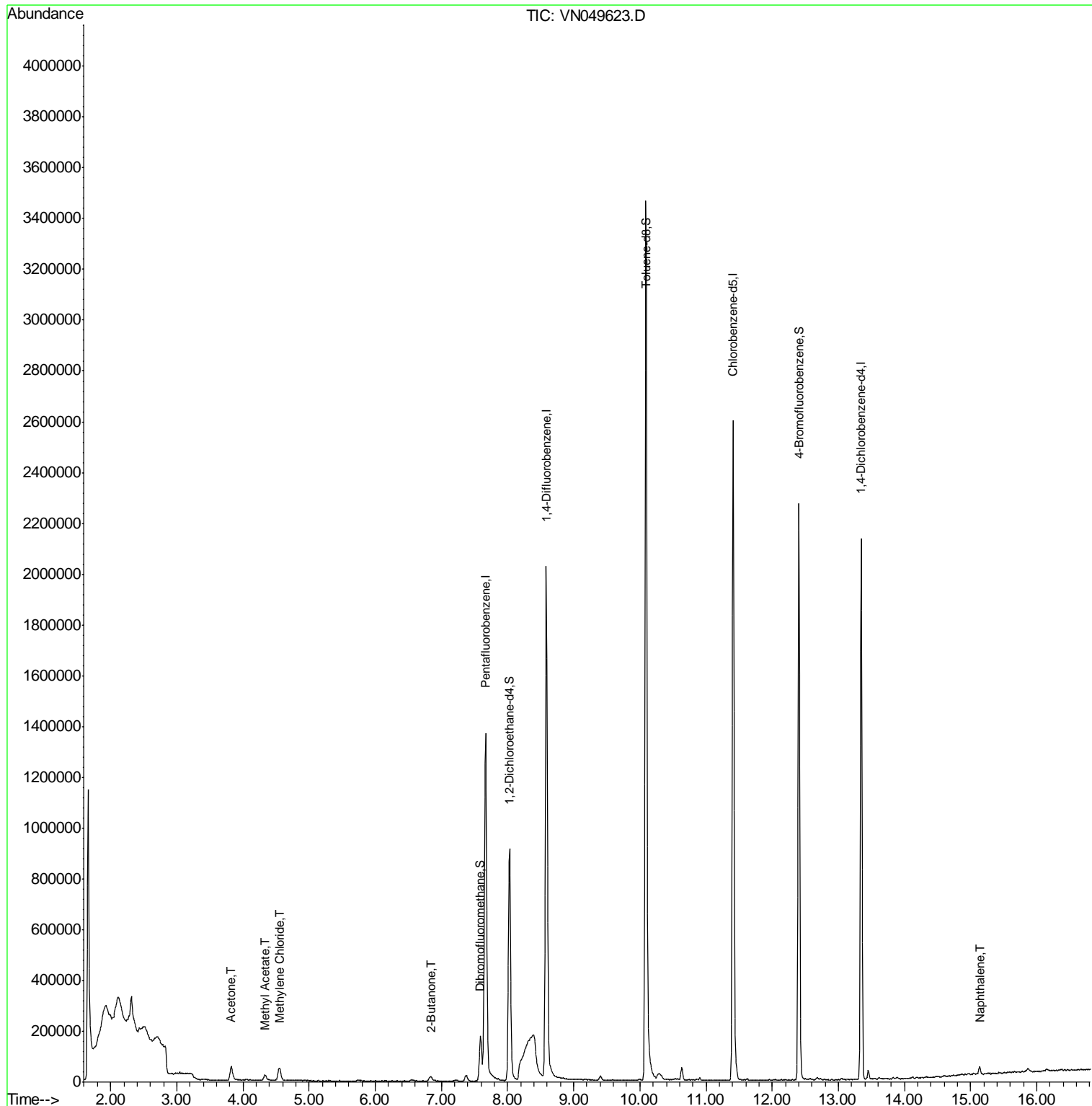
Internal Standards	R.T.	QIon	Response	Conc	Units	Dev(Min)
1) Pentafluorobenzene	7.67	168	1208976	50.00	ug/l	0.00
34) 1,4-Difluorobenzene	8.59	114	1954985	50.00	ug/l	0.00
63) Chlorobenzene-d5	11.41	117	1661999	50.00	ug/l	0.00
72) 1,4-Dichlorobenzene-d4	13.35	152	600894	50.00	ug/l	0.00
System Monitoring Compounds						
33) 1,2-Dichloroethane-d4	8.03	65	797261	49.72	ug/l	0.00
Spiked Amount				50.000		
			Recovery	=		99.44%
35) Dibromofluoromethane	7.59	113	137114	8.67	ug/l	0.00
Spiked Amount				50.000		
			Recovery	=		17.34%
50) Toluene-d8	10.09	98	2660708	44.18	ug/l	0.00
Spiked Amount				50.000		
			Recovery	=		88.36%
62) 4-Bromofluorobenzene	12.40	95	769265	38.63	ug/l	0.00
Spiked Amount				50.000		
			Recovery	=		77.26%
Target Compounds						
16) Acetone	3.82	43	97248	24.98	ug/l	92
18) Methyl Acetate	4.33	43	42952	3.62	ug/l	96
20) Methylene Chloride	4.56	84	38129	2.34	ug/l	89
25) 2-Butanone	6.85	43	8060	1.54	ug/l	94
95) Naphthalene	15.13	128	23047	3.46	ug/l	99

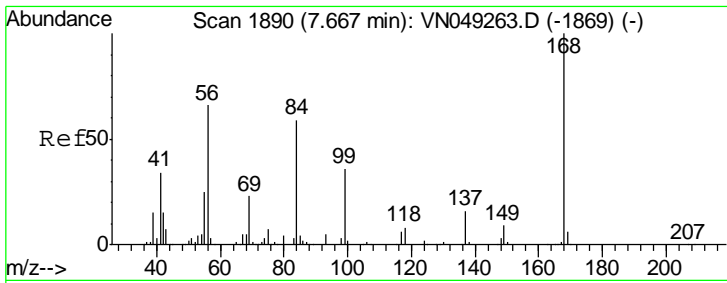
(#) = qualifier out of range (m) = manual integration (+) = signals summed

Data Path : Z:\VOASRV\HPCHEM1\MSVOA N\DATA\VN062818\
 Data File : VN049623.D
 Acq On : 29 Jun 2018 6:26
 Operator : MD\SY
 Sample : J3612-01
 Misc : 5.00mL/MSVOA N/WATER
 ALS Vial : 45 Sample Multiplier: 1

Instrument :
 MSVOA_N
 ClientSampleId :
 S-1(5-5.5)

Quant Time: Jun 29 09:10:15 2018
 Quant Method : Z:\VOASRV\HPCHEM1\MSVOA_N\METHODS\82N061618W.M
 Quant Title : SW846 8260
 QLast Update : Sat Jun 16 01:02:01 2018
 Response via : Initial Calibration

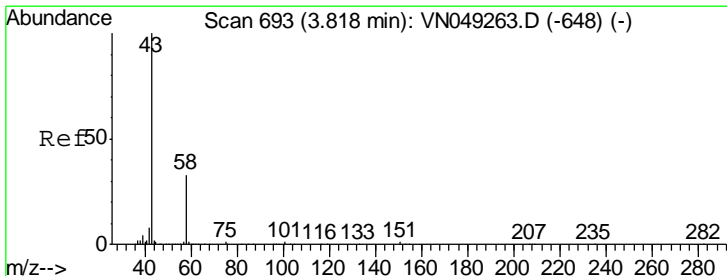
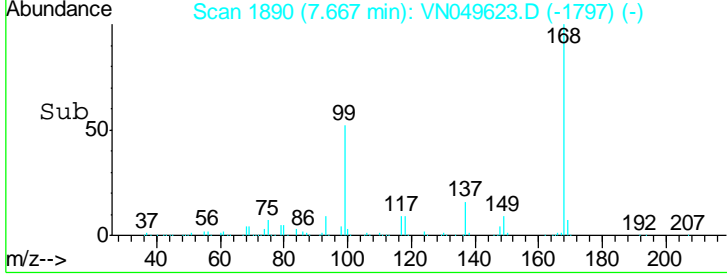
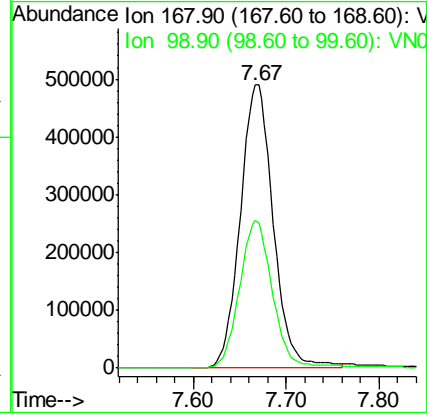
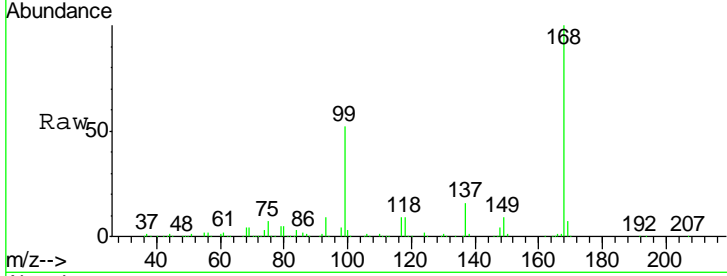




#1
 Pentafluorobenzene
 Concen: 50.00 ug/l
 RT: 7.67 min Scan# 1890
 Delta R.T. -0.00 min
 Lab File: VN049623.D
 Acq: 29 Jun 2018 6:26

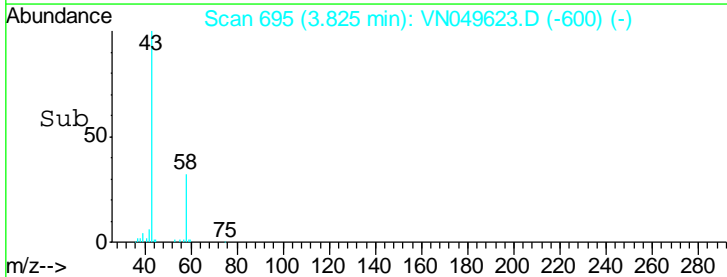
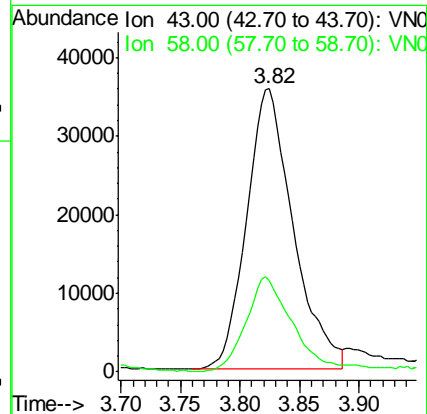
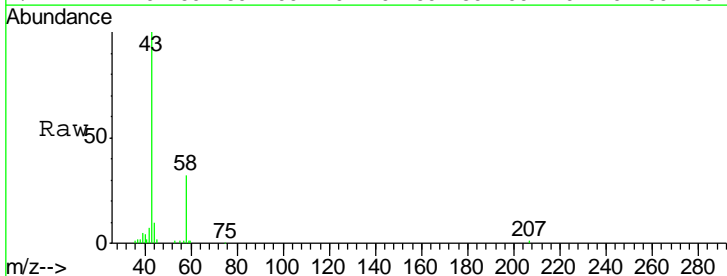
Instrument :
 MSVOA_N
 ClientSampled :
 S-1(5-5.5)

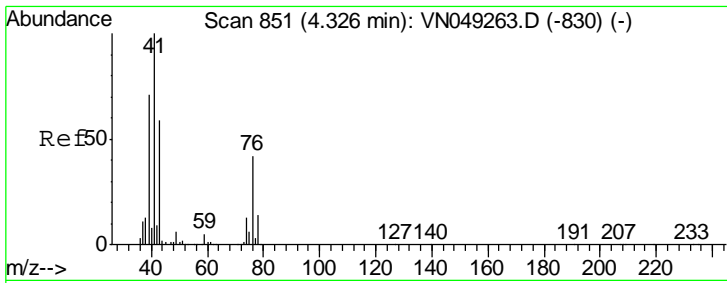
Tgt Ion: 168 Resp: 1208976
 Ion Ratio Lower Upper
 168 100
 99 52.0 45.8 68.6



#16
 Acetone
 Concen: 24.98 ug/l
 RT: 3.82 min Scan# 695
 Delta R.T. 0.01 min
 Lab File: VN049623.D
 Acq: 29 Jun 2018 6:26

Tgt Ion: 43 Resp: 97248
 Ion Ratio Lower Upper
 43 100
 58 32.5 22.4 33.6

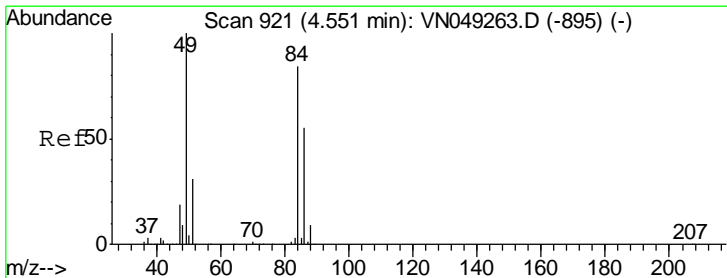
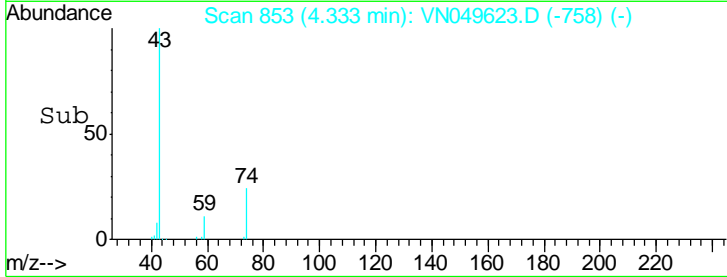
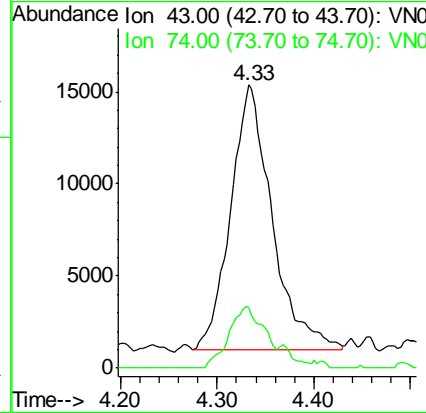
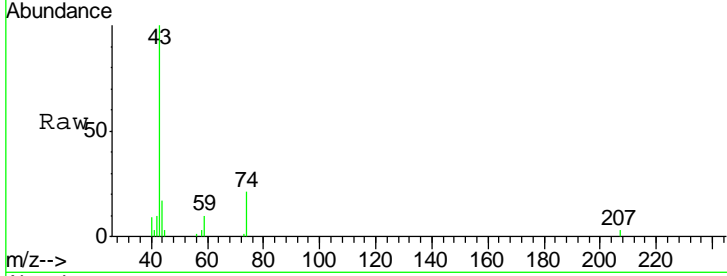




#18
 Methyl Acetate
 Concen: 3.62 ug/l
 RT: 4.33 min Scan# 853
 Delta R.T. 0.01 min
 Lab File: VN049623.D
 Acq: 29 Jun 2018 6:26

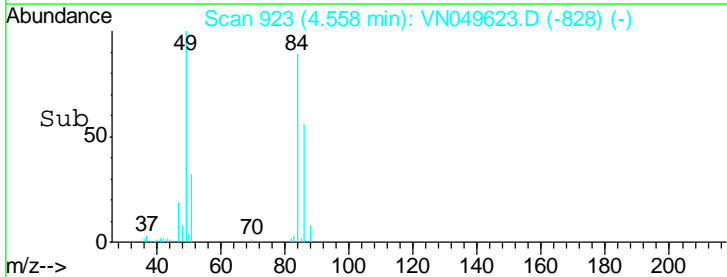
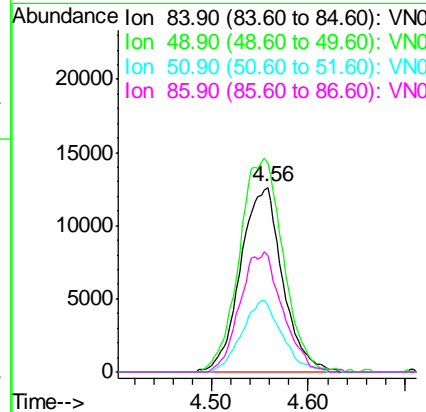
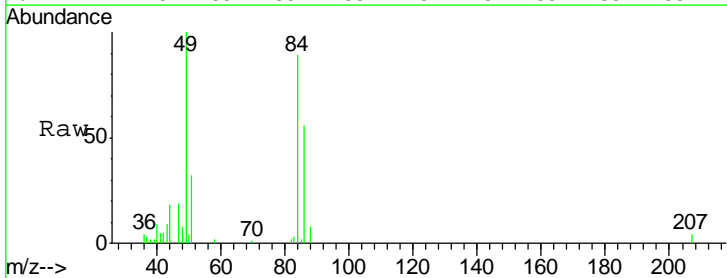
Instrument :
 MSVOA_N
 ClientSampled :
 S-1(5-5.5)

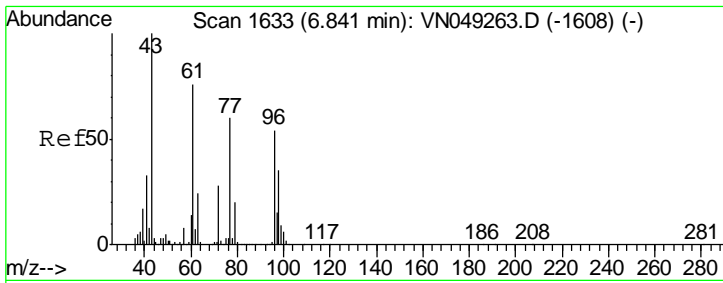
Tgt Ion	Resp	Lower	Upper
43	100		
74	19.7	17.4	26.0



#20
 Methylene Chloride
 Concen: 2.34 ug/l
 RT: 4.56 min Scan# 923
 Delta R.T. 0.01 min
 Lab File: VN049623.D
 Acq: 29 Jun 2018 6:26

Tgt Ion	Resp	Lower	Upper
84	100		
49	112.7	106.9	160.3
51	36.3	32.7	49.1
86	62.9	49.8	74.8

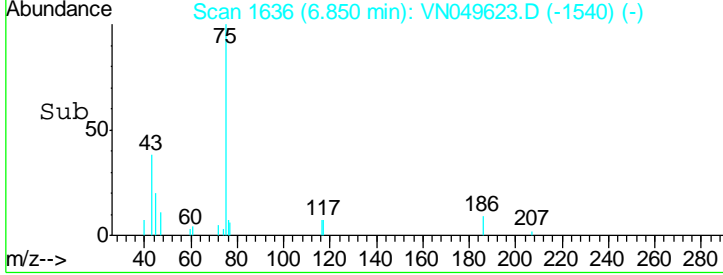
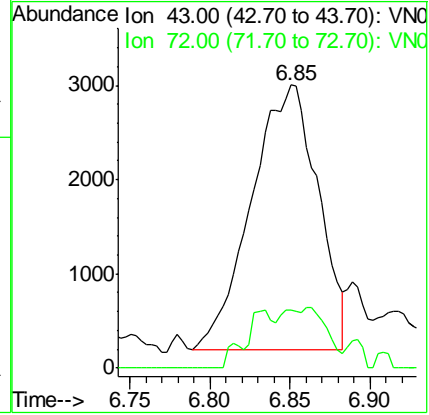
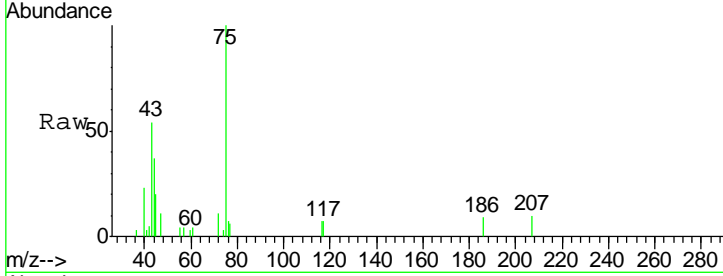




#25
 2-Butanone
 Concen: 1.54 ug/l
 RT: 6.85 min Scan# 1636
 Delta R.T. 0.01 min
 Lab File: VN049623.D
 Acq: 29 Jun 2018 6:26

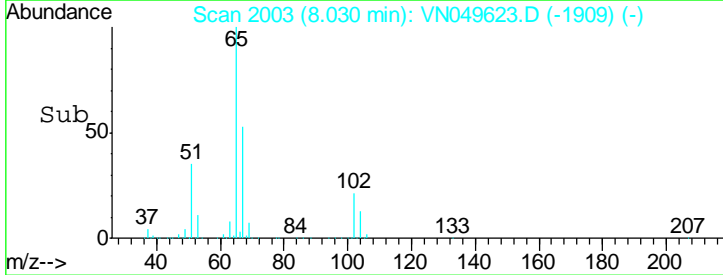
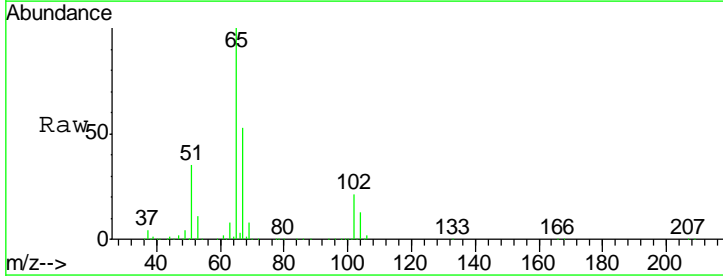
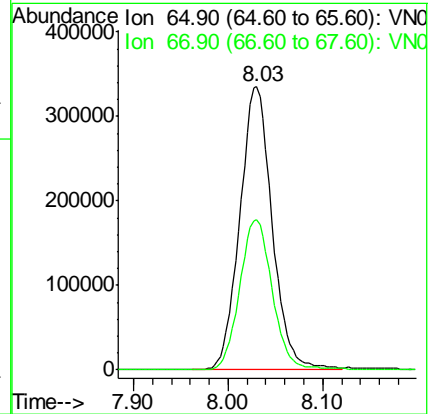
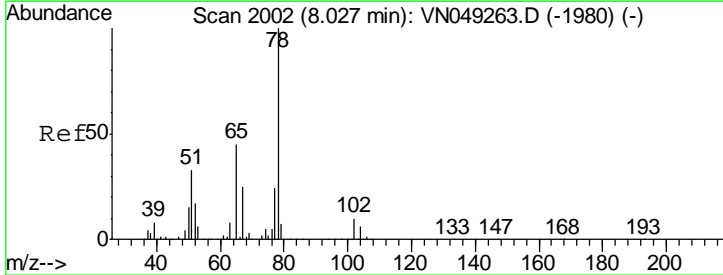
Instrument :
 MSVOA_N
ClientSampled :
 S-1(5-5.5)

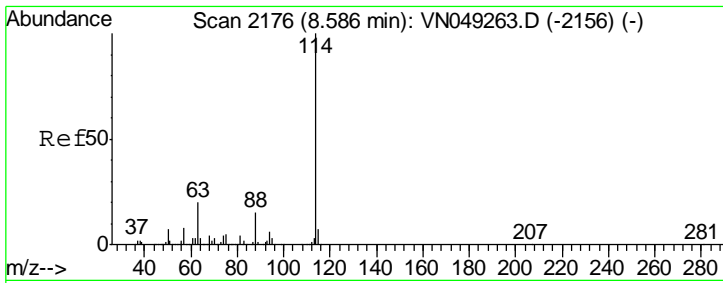
Tgt Ion: 43 Resp: 8060
 Ion Ratio Lower Upper
 43 100
 72 22.2 20.2 30.2



#33
 1,2-Dichloroethane-d4
 Concen: 49.72 ug/l
 RT: 8.03 min Scan# 2003
 Delta R.T. 0.00 min
 Lab File: VN049623.D
 Acq: 29 Jun 2018 6:26

Tgt Ion: 65 Resp: 797261
 Ion Ratio Lower Upper
 65 100
 67 53.6 0.0 103.8

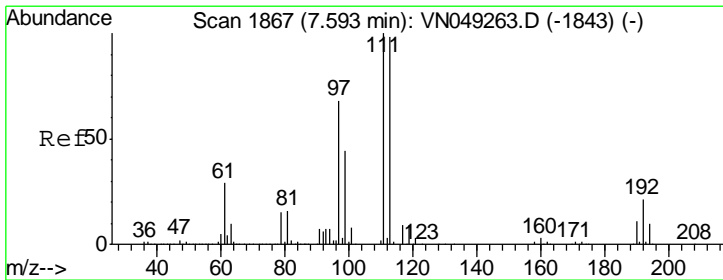
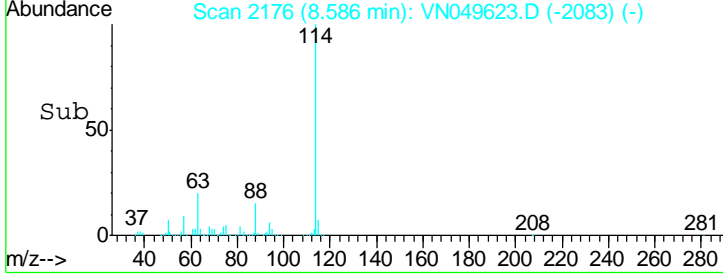
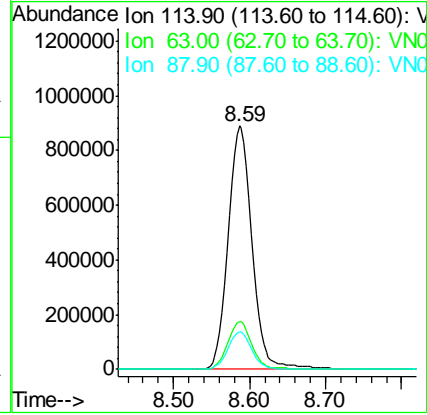
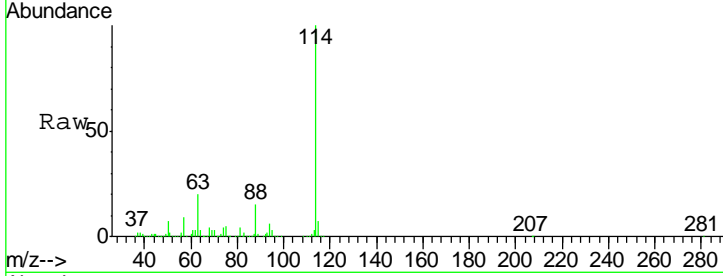




#34
 1,4-Difluorobenzene
 Concen: 50.00 ug/l
 RT: 8.59 min Scan# 2176
 Delta R.T. -0.00 min
 Lab File: VN049623.D
 Acq: 29 Jun 2018 6:26

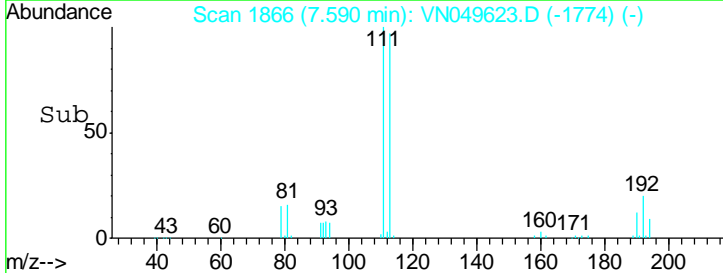
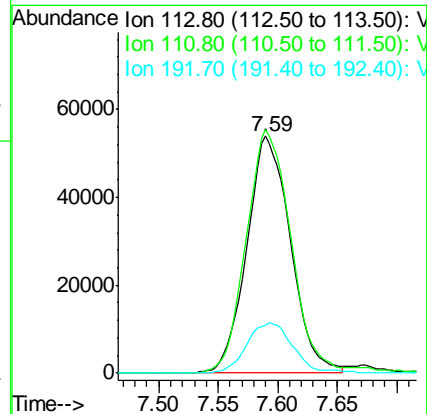
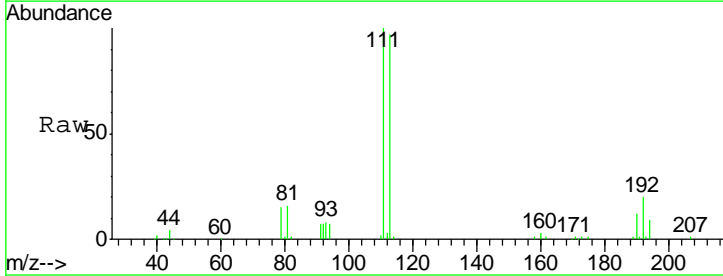
Instrument :
 MSVOA_N
 ClientSampled :
 S-1(5-5.5)

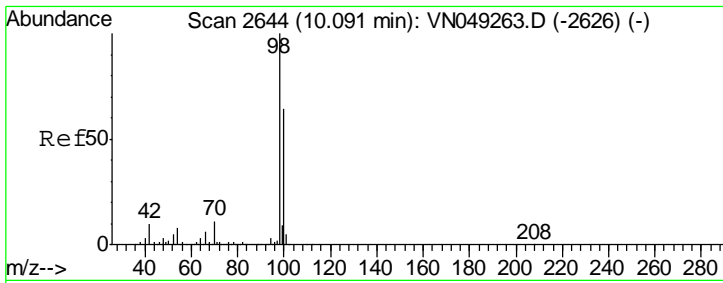
Tgt Ion	Resp	Lower	Upper
114	100		
63	19.7	0.0	44.4
88	15.3	0.0	31.4



#35
 Dibromofluoromethane
 Concen: 8.67 ug/l
 RT: 7.59 min Scan# 1866
 Delta R.T. -0.00 min
 Lab File: VN049623.D
 Acq: 29 Jun 2018 6:26

Tgt Ion	Resp	Lower	Upper
113	100		
111	104.4	82.4	123.6
192	22.0	15.0	22.6

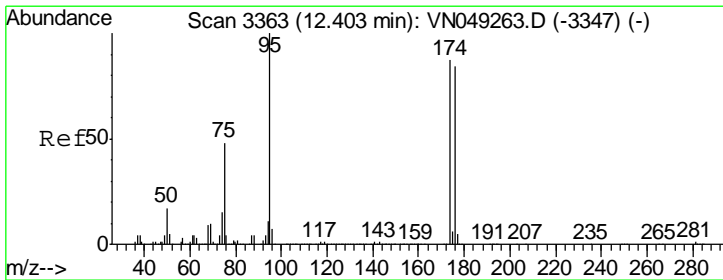
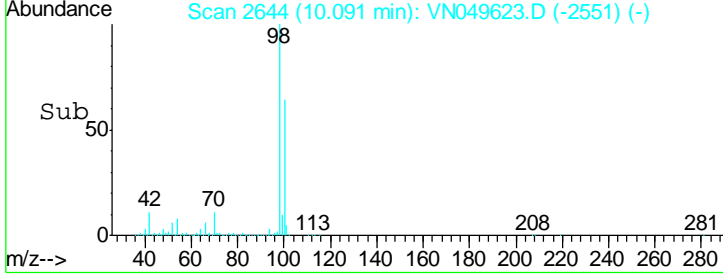
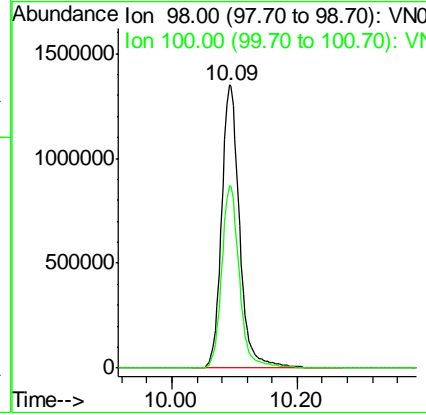
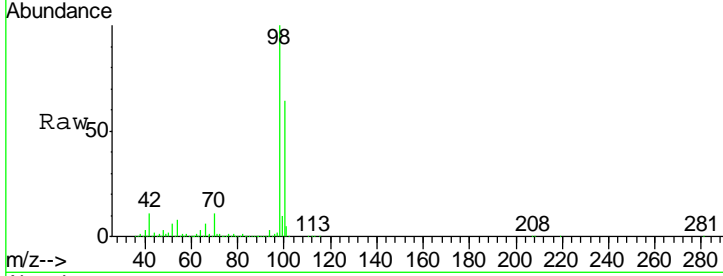




#50
 Toluene-d8
 Concen: 44.18 ug/l
 RT: 10.09 min Scan# 2644
 Delta R.T. 0.00 min
 Lab File: VN049623.D
 Acq: 29 Jun 2018 6:26

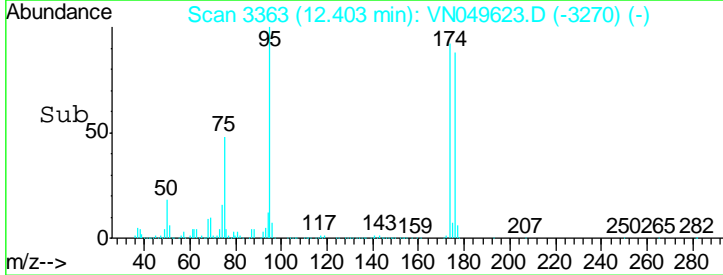
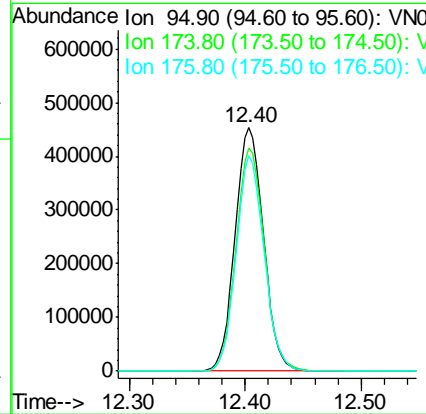
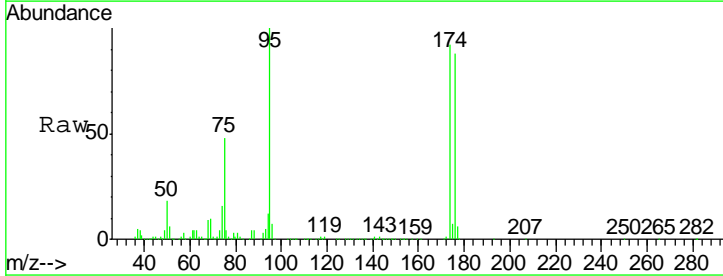
Instrument : MSVOA_N
 ClientSampled : S-1(5-5.5)

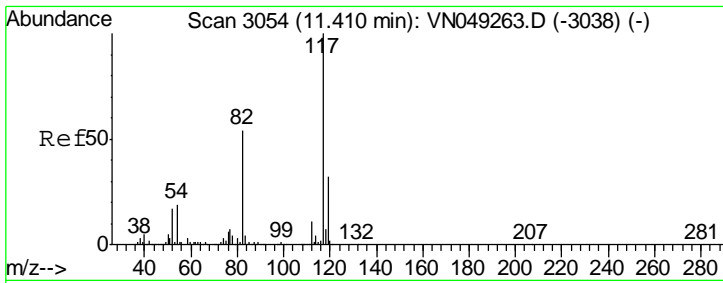
Tgt Ion: 98 Resp: 2660708
 Ion Ratio Lower Upper
 98 100
 100 63.8 49.8 74.8



#62
 4-Bromofluorobenzene
 Concen: 38.63 ug/l
 RT: 12.40 min Scan# 3363
 Delta R.T. 0.00 min
 Lab File: VN049623.D
 Acq: 29 Jun 2018 6:26

Tgt Ion: 95 Resp: 769265
 Ion Ratio Lower Upper
 95 100
 174 91.7 0.0 165.6
 176 86.9 0.0 157.4

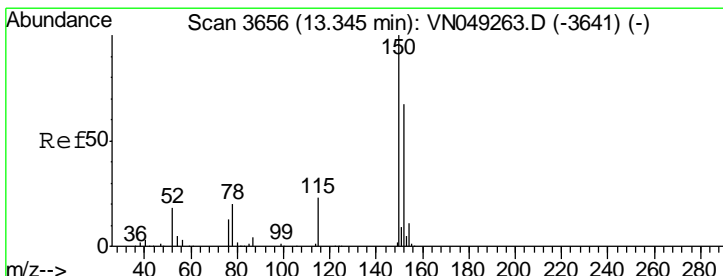
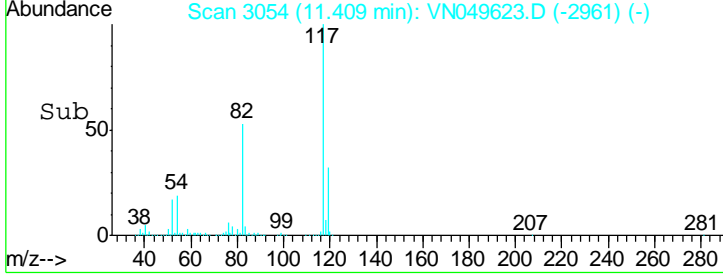
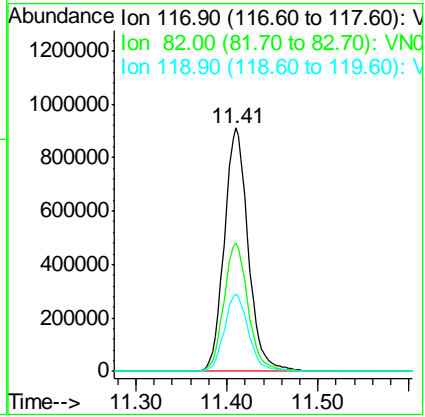
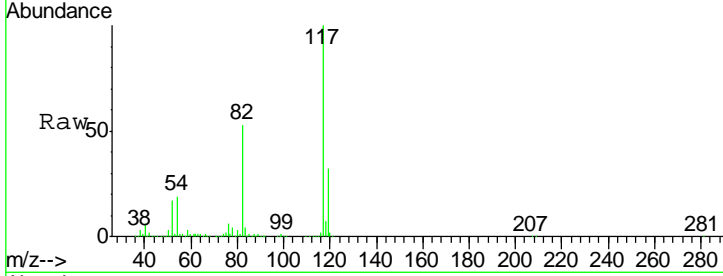




#63
 Chlorobenzene-d5
 Concen: 50.00 ug/l
 RT: 11.41 min Scan# 3054
 Delta R.T. -0.00 min
 Lab File: VN049623.D
 Acq: 29 Jun 2018 6:26

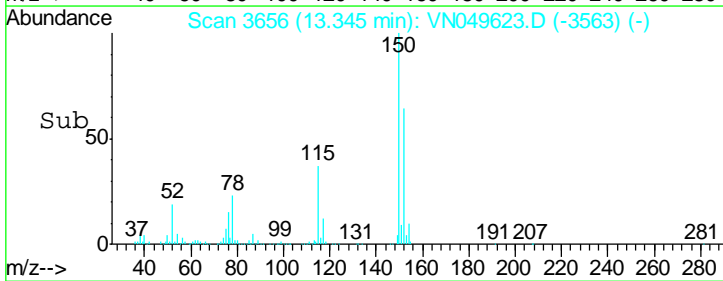
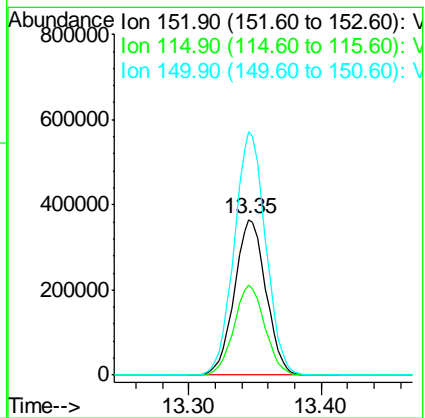
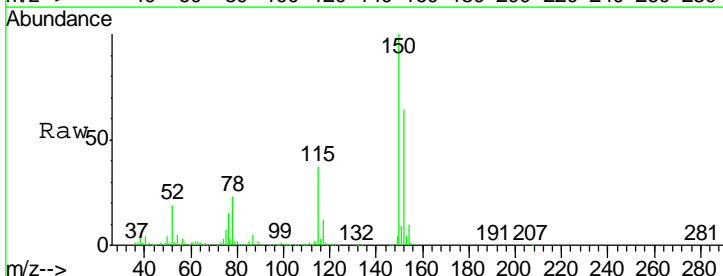
Instrument : MSVOA_N
 ClientSampled : S-1(5-5.5)

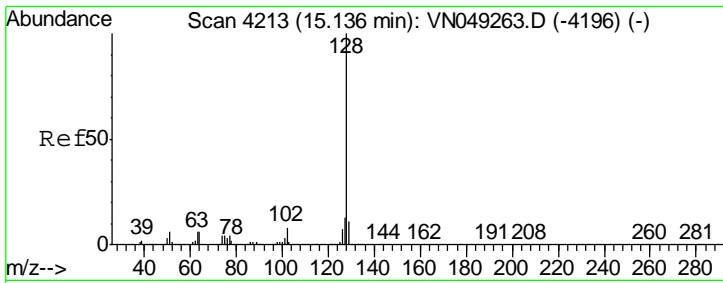
Tgt Ion	Resp	Lower	Upper
117	1661999		
82	52.8	45.9	68.9
119	31.9	25.5	38.3



#72
 1,4-Dichlorobenzene-d4
 Concen: 50.00 ug/l
 RT: 13.35 min Scan# 3656
 Delta R.T. -0.00 min
 Lab File: VN049623.D
 Acq: 29 Jun 2018 6:26

Tgt Ion	Resp	Lower	Upper
152	600894		
115	57.1	28.7	86.1
150	156.1	0.0	351.0





#95
 Naphthalene
 Concen: 3.46 ug/l
 RT: 15.13 min Scan# 4212
 Delta R.T. -0.00 min
 Lab File: VN049623.D
 Acq: 29 Jun 2018 6:26

Instrument : MSVOA_N
 ClientSampled : S-1(5-5.5)

Tot Ion:128 Resp: 23047

Ion	Ratio	Lower	Upper
128	100		
127	13.0	10.6	16.0
129	11.4	8.5	12.7

