

Data Path : Z:\VOASRV\HPCHEM1\MSVOA N\DATA\VN062920\
 Data File : VN062201.D
 Acq On : 29 Jun 2020 20:32
 Operator : JC/MD
 Sample : L3127-05
 Misc : 5.00mL/MSVOA N/WATER
 ALS Vial : 22 Sample Multiplier: 1

Instrument :
 MSVOA_N
 ClientSampleId :
 22BR-20200625

Quant Time: Jun 30 04:29:23 2020
 Quant Method : Z:\VOASRV\HPCHEM1\MSVOA_N\METHODS\82N062420W.M
 Quant Title : SW846 8260
 QLast Update : Wed Jun 24 15:33:00 2020
 Response via : Initial Calibration

Internal Standards	R.T.	QIon	Response	Conc	Units	Dev(Min)
1) Pentafluorobenzene	7.63	168	194825	50.00	ug/l	0.00
34) 1,4-Difluorobenzene	8.55	114	373106	50.00	ug/l	0.00
63) Chlorobenzene-d5	11.38	117	355609	50.00	ug/l	0.00
72) 1,4-Dichlorobenzene-d4	13.32	152	122002	50.00	ug/l	0.00

System Monitoring Compounds

33) 1,2-Dichloroethane-d4	7.99	65	147272	53.87	ug/l	0.00
Spiked Amount	50.000		Recovery	=	107.74%	
35) Dibromofluoromethane	7.55	113	124484	52.01	ug/l	0.00
Spiked Amount	50.000		Recovery	=	104.02%	
50) Toluene-d8	10.06	98	476942	49.85	ug/l	0.00
Spiked Amount	50.000		Recovery	=	99.70%	
62) 4-Bromofluorobenzene	12.38	95	147612	45.66	ug/l	0.00
Spiked Amount	50.000		Recovery	=	91.32%	

Target Compounds

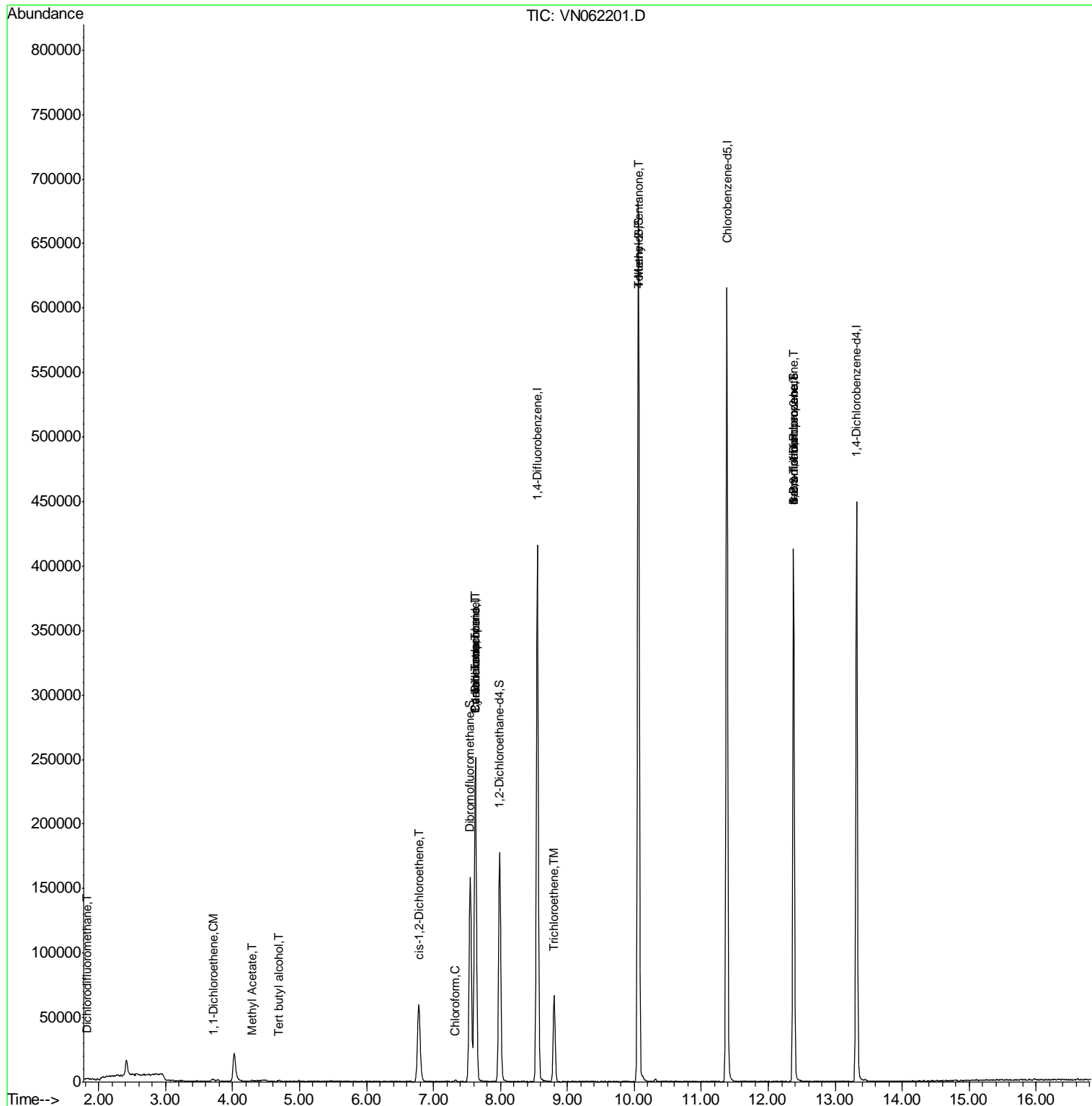
					Qvalue	
2) Dichlorodifluoromethane	1.84	85	844	0.383	ug/l #	43
3) Chloromethane	2.03	50	598	Below Cal		94
11) Tert butyl alcohol	4.69	59	415	1.057	ug/l #	72
12) 1,1-Dichloroethene	3.70	96	824	0.368	ug/l #	72
16) Acetone	3.77	43	1295	Below Cal	#	75
18) Methyl Acetate	4.29	43	733	0.337	ug/l #	46
20) Methylene Chloride	4.51	84	70	Below Cal	#	9
27) cis-1,2-Dichloroethene	6.78	96	36360	12.679	ug/l	93
30) Chloroform	7.33	83	1496	0.329	ug/l #	77
31) Cyclohexane	7.63	56	4657	1.233	ug/l #	33
36) 1,1-Dichloropropene	7.63	75	17103	4.560	ug/l #	47
38) Carbon Tetrachloride	7.63	117	19706	5.573	ug/l #	16
44) Trichloroethene	8.80	130	23688	8.215	ug/l	90
51) 4-Methyl-2-Pentanone	10.06	43	2042	0.690	ug/l #	1
71) Bromoform	12.38	173	1288	0.671	ug/l #	1
76) 1,2,3-Trichloropropane	12.38	75	74292	25.867	ug/l #	100
81) trans-1,4-Dichloro-2-buten	12.38	75	74292	75.543	ug/l #	13

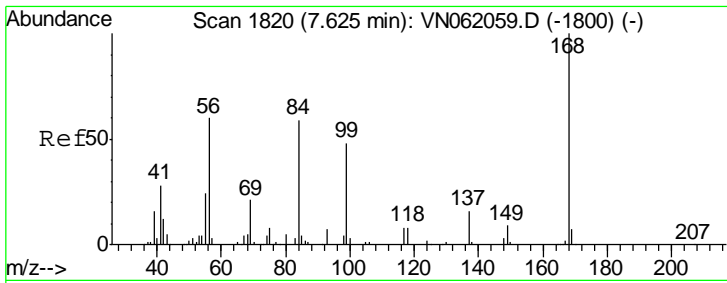
(#) = qualifier out of range (m) = manual integration (+) = signals summed

Data Path : Z:\VOASRV\HPCHEM1\MSVOA N\DATA\VN062920\
 Data File : VN062201.D
 Acq On : 29 Jun 2020 20:32
 Operator : JC/MD
 Sample : L3127-05
 Misc : 5.00mL/MSVOA N/WATER
 ALS Vial : 22 Sample Multiplier: 1

Instrument :
 MSVOA_N
 Client Sampled :
 22BR-20200625

Quant Time: Jun 30 04:29:23 2020
 Quant Method : Z:\VOASRV\HPCHEM1\MSVOA_N\METHODS\82N062420W.M
 Quant Title : SW846 8260
 QLast Update : Wed Jun 24 15:33:00 2020
 Response via : Initial Calibration

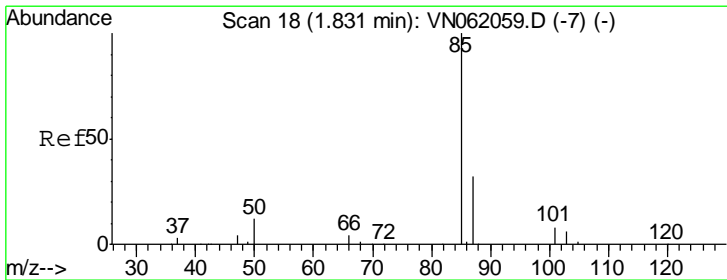
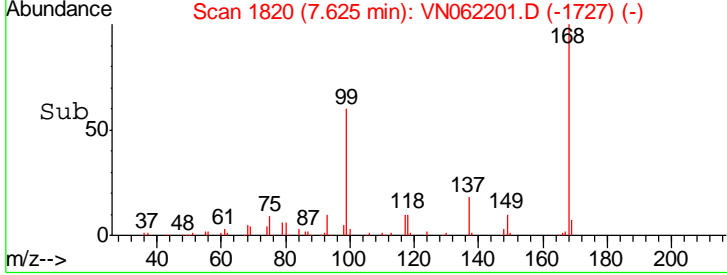
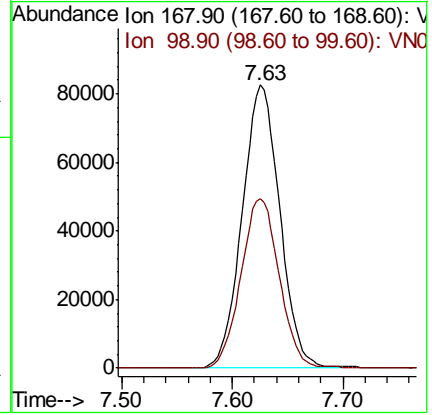
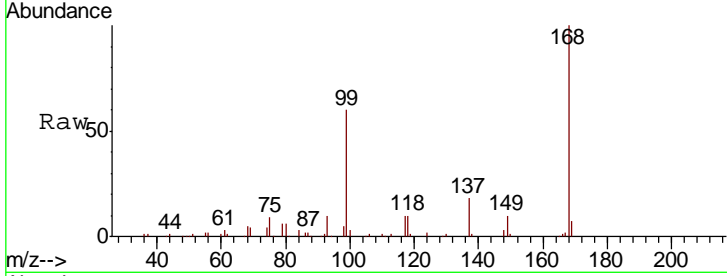




#1
 Pentafluorobenzene
 Concen: 50.000 ug/l
 RT: 7.63 min Scan# 1820
 Delta R.T. -0.00 min
 Lab File: VN062201.D
 Acq: 29 Jun 2020 20:32

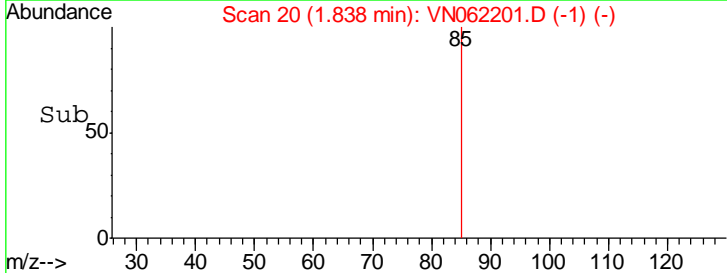
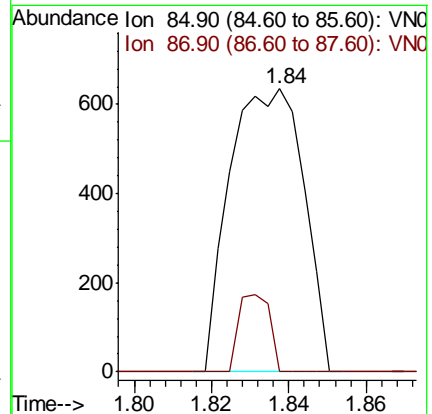
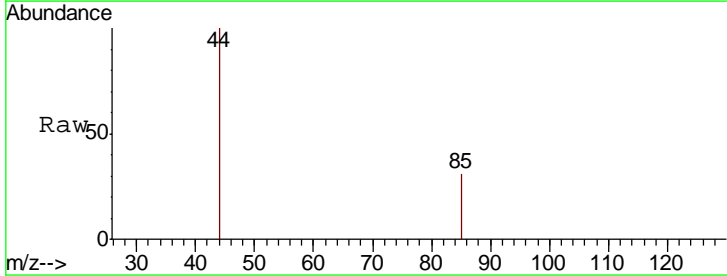
Instrument :
 MSVOA_N
 ClientSampled :
 22BR-20200625

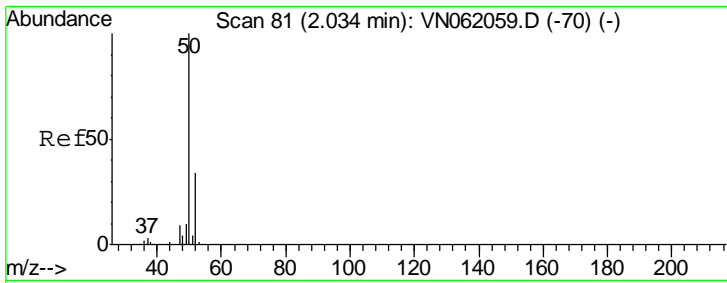
Tgt Ion	Resp	Lower	Upper
168	194825		
99	59.8	45.8	68.8



#2
 Dichlorodifluoromethane
 Concen: 0.383 ug/l
 RT: 1.84 min Scan# 20
 Delta R.T. 0.01 min
 Lab File: VN062201.D
 Acq: 29 Jun 2020 20:32

Tgt Ion	Resp	Lower	Upper
85	844		
87	0.0	15.9	47.7#

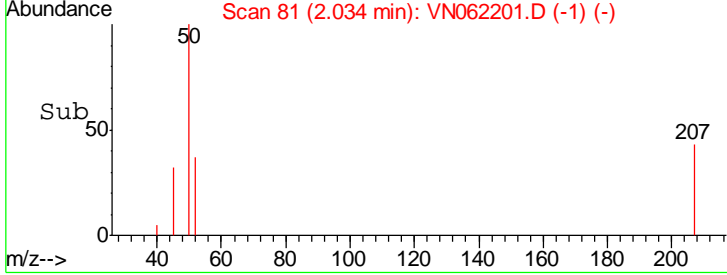
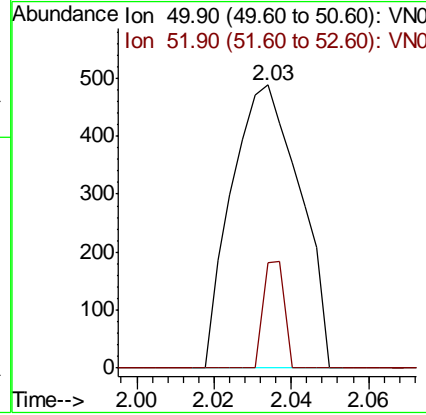
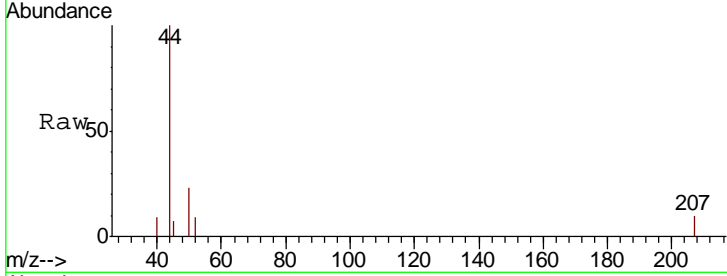




#3
 Chloromethane
 Concen: Below Cal
 RT: 2.03 min Scan# 81
 Delta R.T. 0.00 min
 Lab File: VN062201.D
 Acq: 29 Jun 2020 20:32

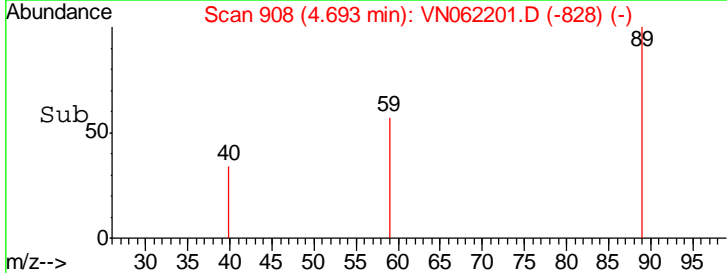
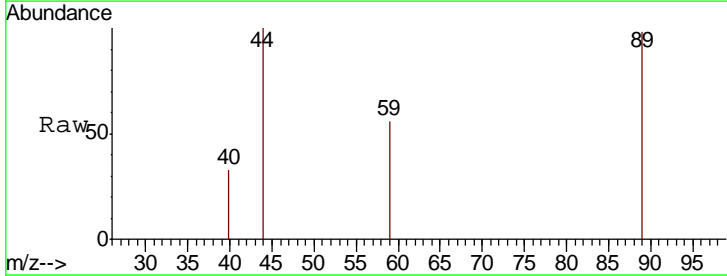
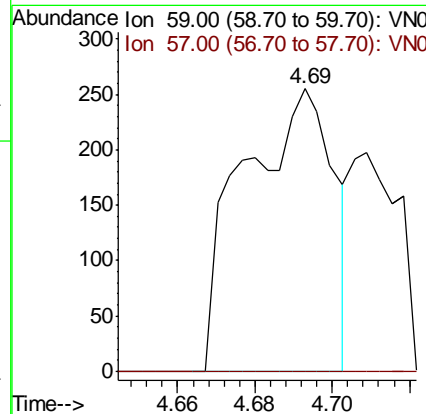
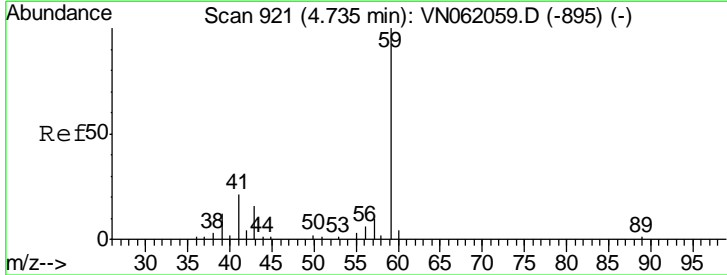
Instrument :
 MSVOA_N
ClientSampled :
 22BR-20200625

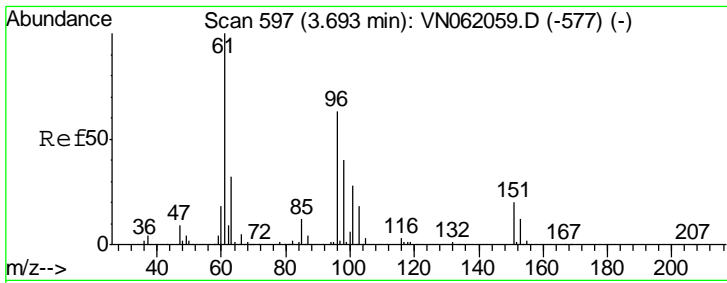
Tgt Ion	Resp	Lower	Upper
50	100		
52	37.1	27.0	40.6



#11
 Tert butyl alcohol
 Concen: 1.057 ug/l
 RT: 4.69 min Scan# 908
 Delta R.T. -0.04 min
 Lab File: VN062201.D
 Acq: 29 Jun 2020 20:32

Tgt Ion	Resp	Lower	Upper
59	100		
57	0.0	8.3	12.5#

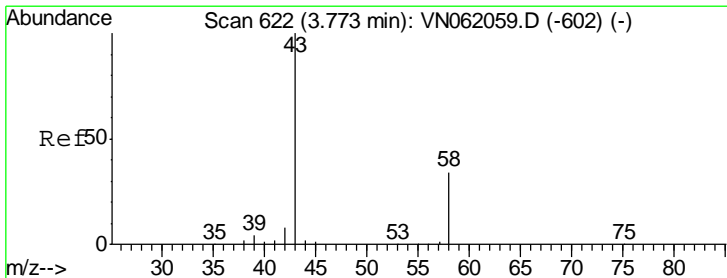
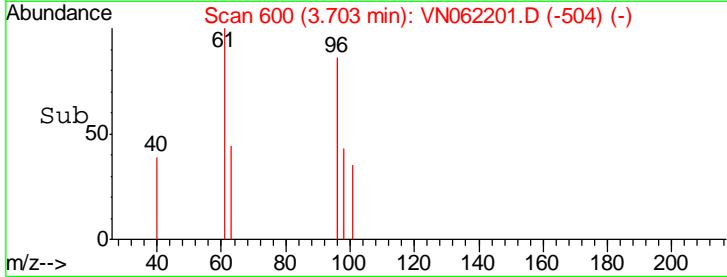
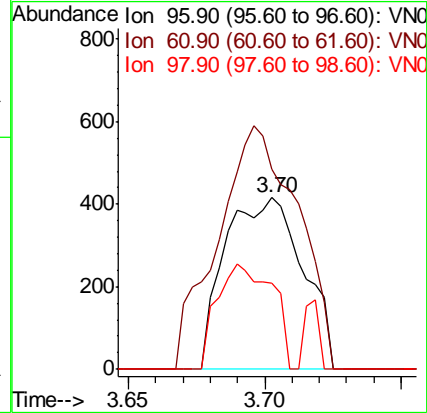
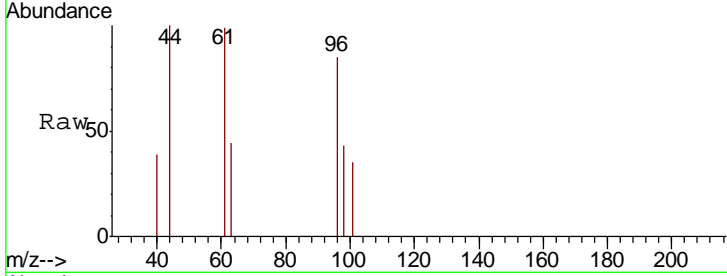




#12
 1,1-Dichloroethene
 Concen: 0.368 ug/l
 RT: 3.70 min Scan# 600
 Delta R.T. 0.01 min
 Lab File: VN062201.D
 Acq: 29 Jun 2020 20:32

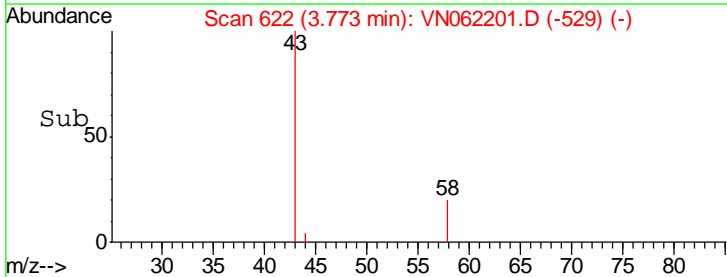
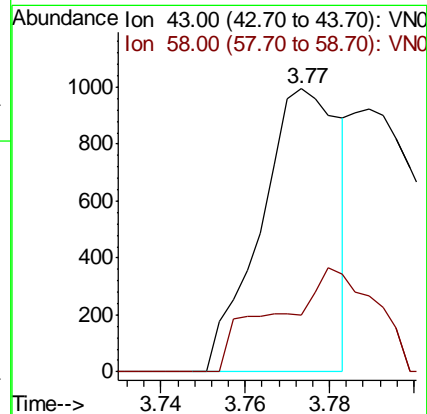
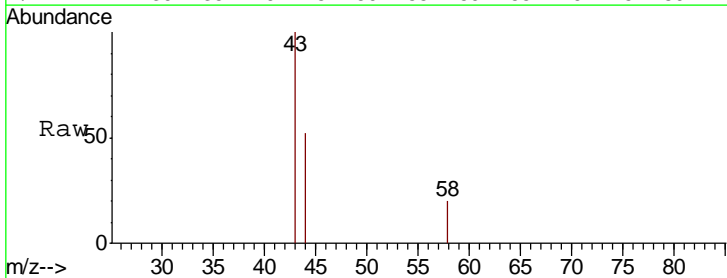
Instrument :
 MSVOA_N
 ClientSampled :
 22BR-20200625

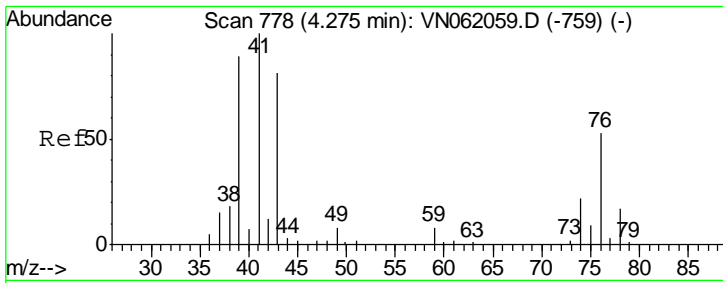
Tgt Ion	Resp	Lower	Upper
96	824		
Ion Ratio			
96	100		
61	116.6	126.7	190.1#
98	50.4	51.0	76.4#



#16
 Acetone
 Concen: Below Cal
 RT: 3.77 min Scan# 622
 Delta R.T. 0.00 min
 Lab File: VN062201.D
 Acq: 29 Jun 2020 20:32

Tgt Ion	Resp	Lower	Upper
43	1295		
Ion Ratio			
43	100		
58	20.2	27.5	41.3#

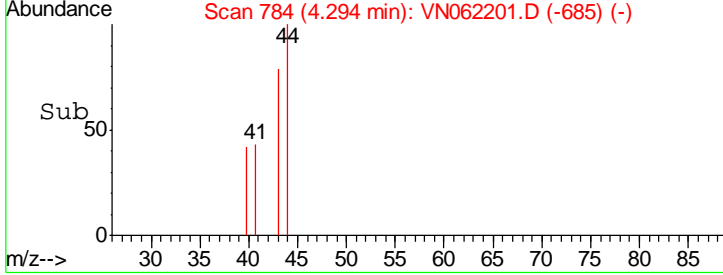
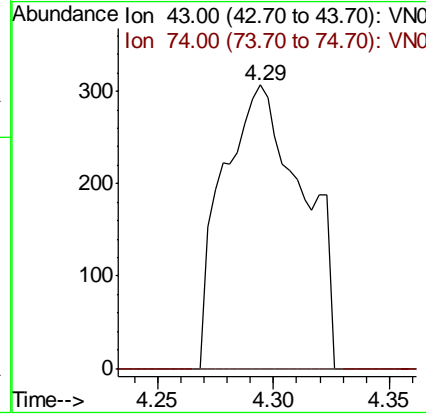
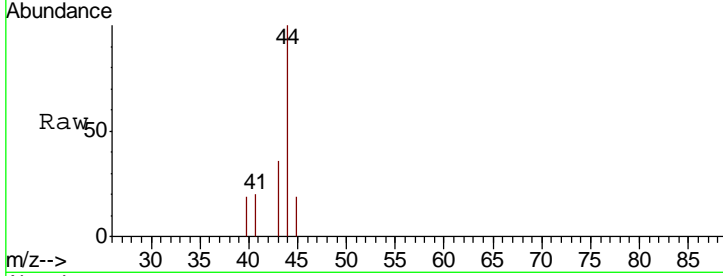




#18
 Methyl Acetate
 Concen: 0.337 ug/l
 RT: 4.29 min Scan# 784
 Delta R.T. 0.02 min
 Lab File: VN062201.D
 Acq: 29 Jun 2020 20:32

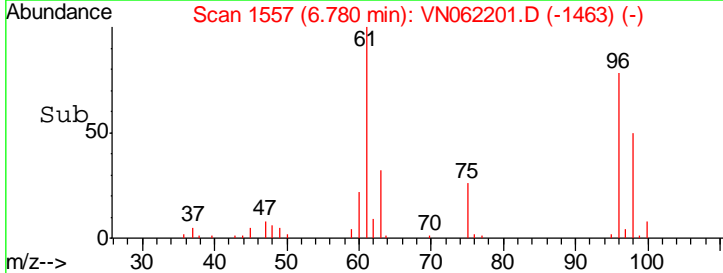
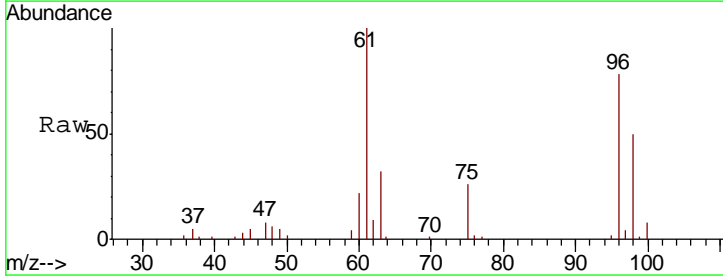
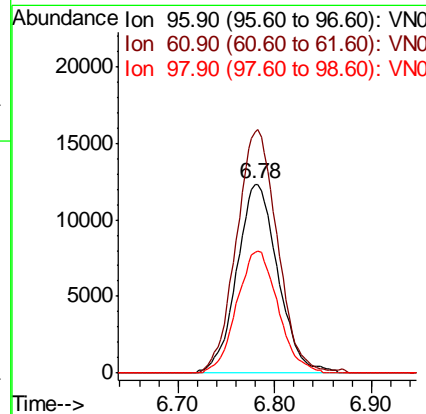
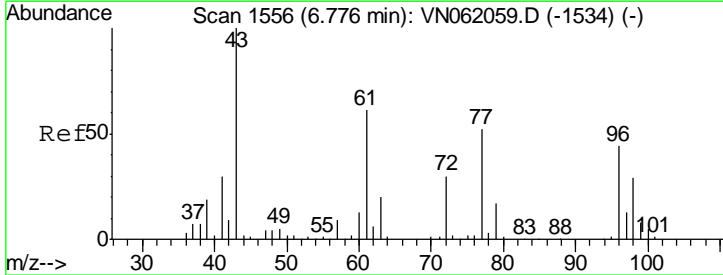
Instrument :
 MSVOA_N
 ClientSampled :
 22BR-20200625

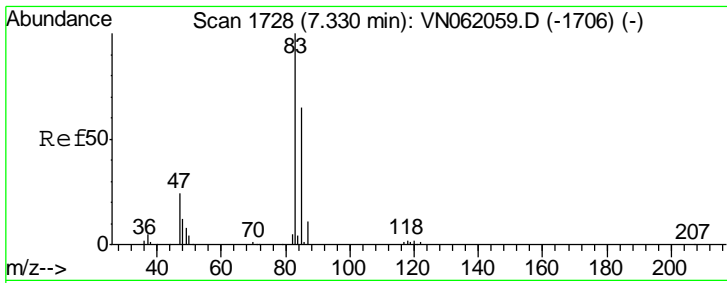
Tgt Ion: 43 Resp: 733
 Ion Ratio Lower Upper
 43 100
 74 0.0 22.9 34.3#



#27
 cis-1,2-Dichloroethene
 Concen: 12.679 ug/l
 RT: 6.78 min Scan# 1557
 Delta R.T. 0.00 min
 Lab File: VN062201.D
 Acq: 29 Jun 2020 20:32

Tgt Ion: 96 Resp: 36360
 Ion Ratio Lower Upper
 96 100
 61 128.3 0.0 280.4
 98 64.7 0.0 129.4

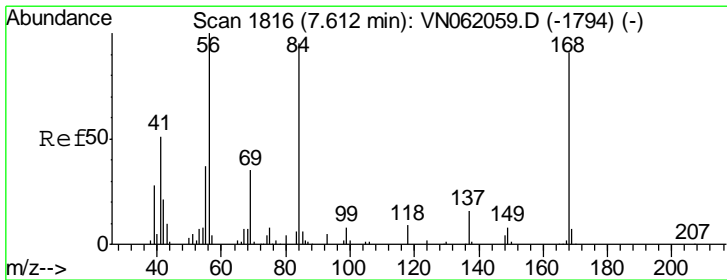
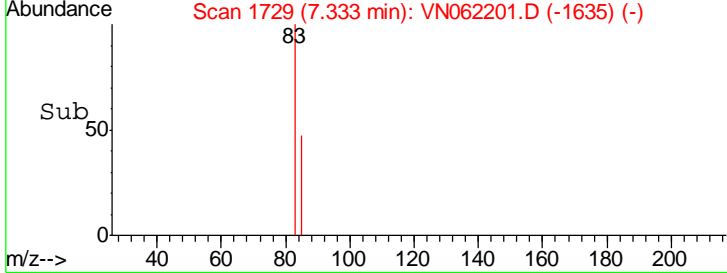
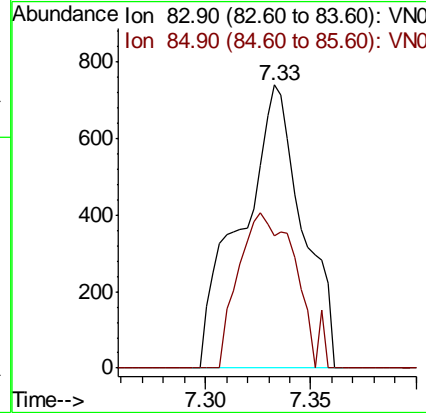
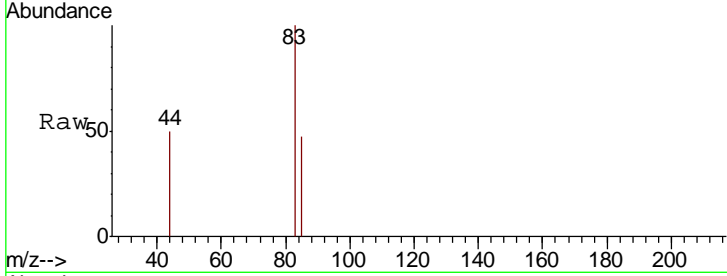




#30
 Chloroform
 Concen: 0.329 ug/l
 RT: 7.33 min Scan# 1729
 Delta R.T. 0.00 min
 Lab File: VN062201.D
 Acq: 29 Jun 2020 20:32

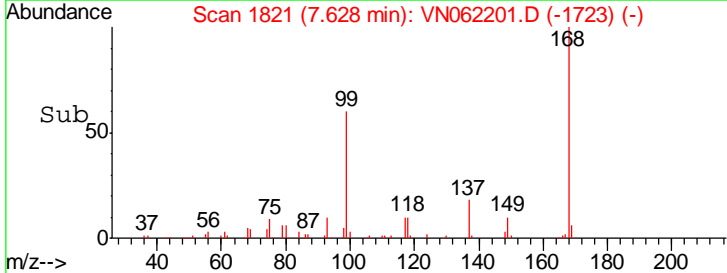
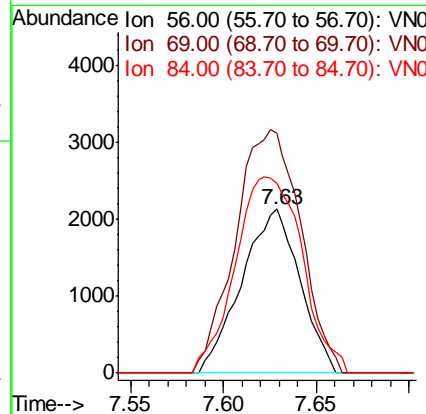
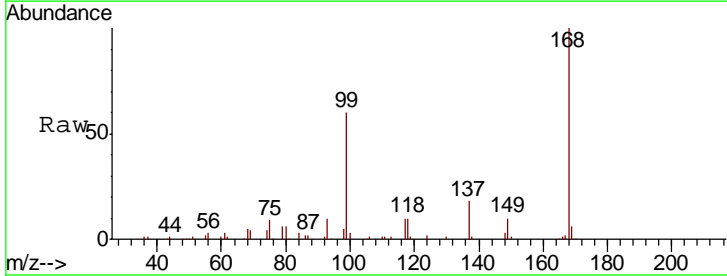
Instrument :
 MSVOA_N
 ClientSampled :
 22BR-20200625

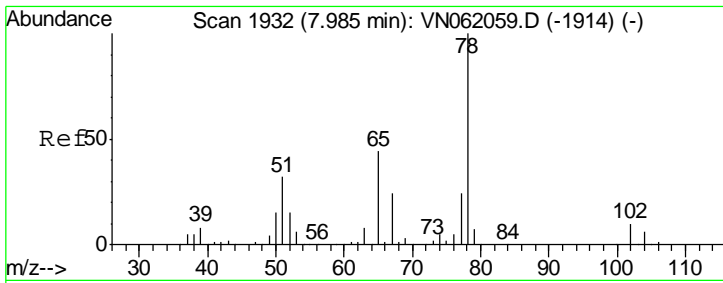
Tgt Ion	Resp	Lower	Upper
83	1496		
85	47.0	52.3	78.5#



#31
 Cyclohexane
 Concen: 1.233 ug/l
 RT: 7.63 min Scan# 1821
 Delta R.T. 0.02 min
 Lab File: VN062201.D
 Acq: 29 Jun 2020 20:32

Tgt Ion	Resp	Lower	Upper
56	4657		
69	145.8	28.0	42.0#
84	115.6	76.1	114.1#

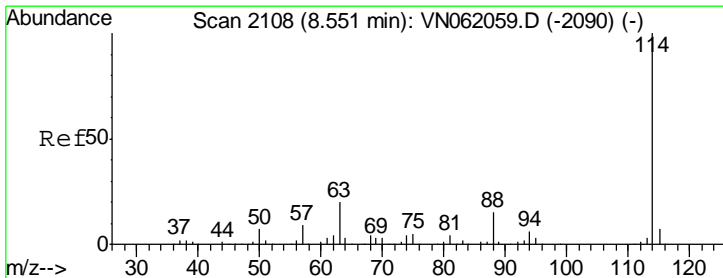
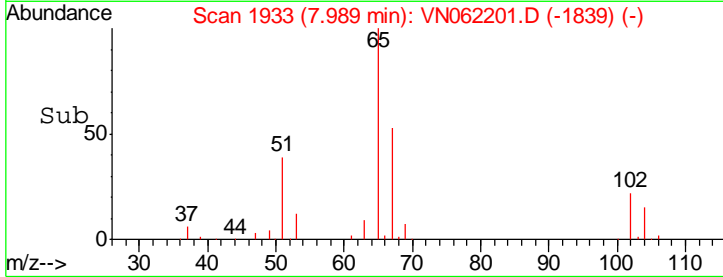
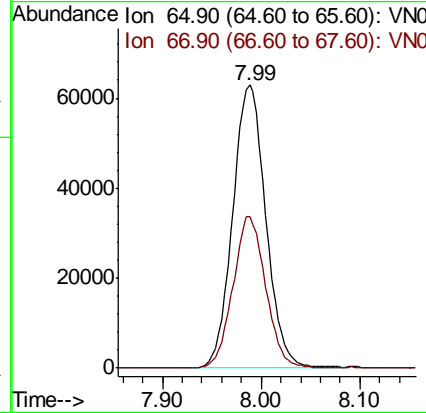
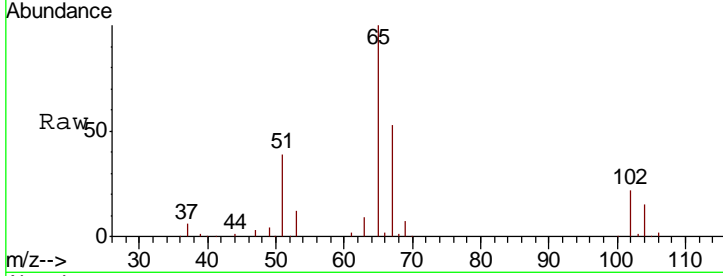




#33
 1,2-Dichloroethane-d4
 Concen: 53.866 ug/l
 RT: 7.99 min Scan# 1933
 Delta R.T. 0.00 min
 Lab File: VN062201.D
 Acq: 29 Jun 2020 20:32

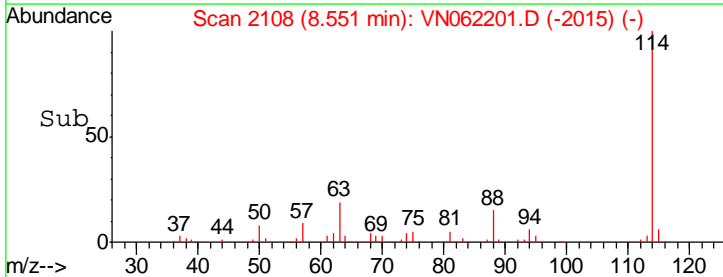
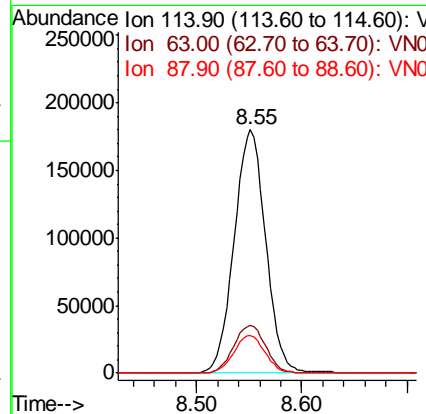
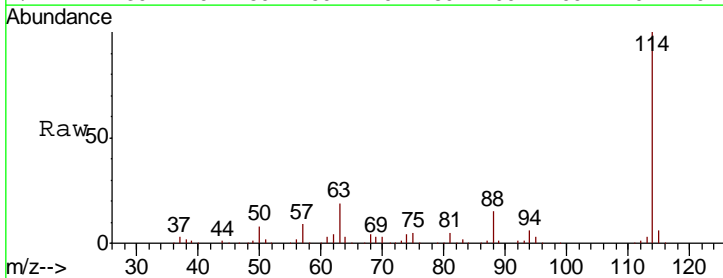
Instrument :
 MSVOA_N
 ClientSampled :
 22BR-20200625

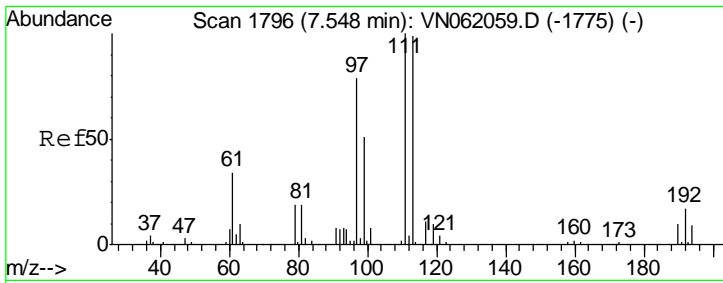
Tgt Ion: 65 Resp: 147272
 Ion Ratio Lower Upper
 65 100
 67 53.0 0.0 106.2



#34
 1,4-Difluorobenzene
 Concen: 50.000 ug/l
 RT: 8.55 min Scan# 2108
 Delta R.T. -0.00 min
 Lab File: VN062201.D
 Acq: 29 Jun 2020 20:32

Tgt Ion: 114 Resp: 373106
 Ion Ratio Lower Upper
 114 100
 63 19.5 0.0 39.2
 88 15.3 0.0 30.8

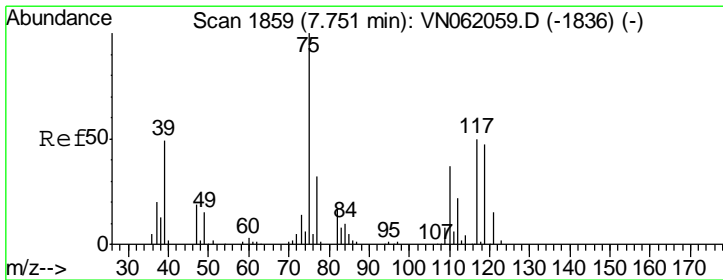
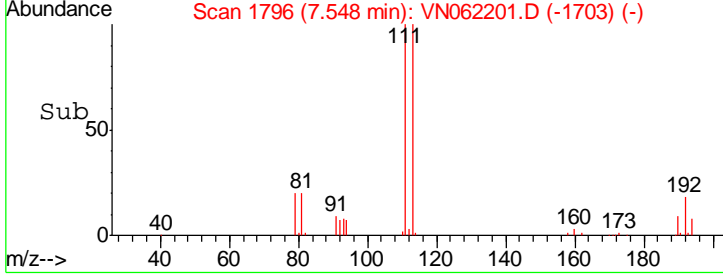
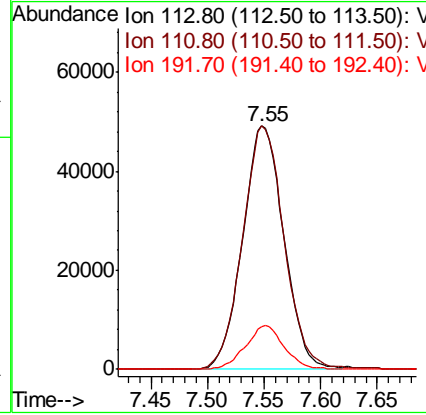
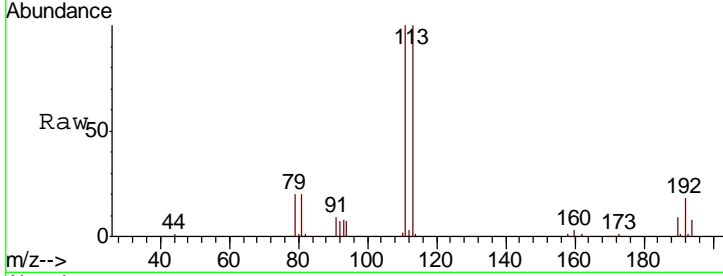




#35
 Dibromofluoromethane
 Concen: 52.006 ug/l
 RT: 7.55 min Scan# 1796
 Delta R.T. -0.00 min
 Lab File: VN062201.D
 Acq: 29 Jun 2020 20:32

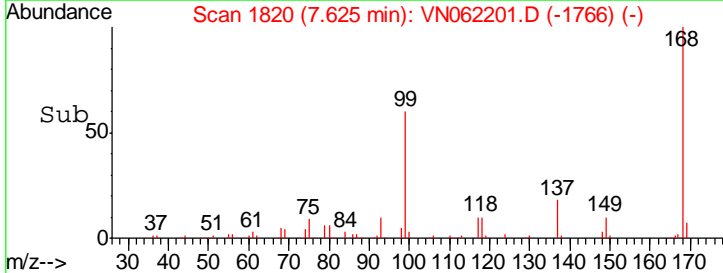
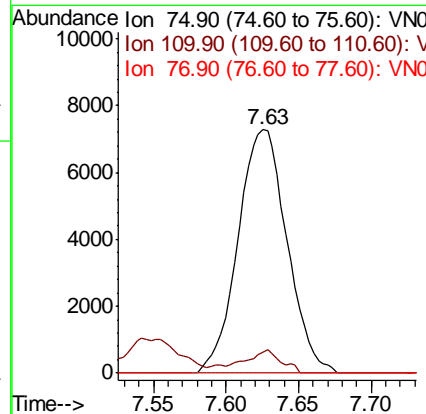
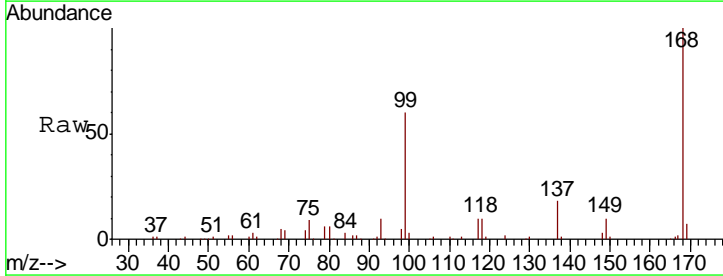
Instrument :
 MSVOA_N
 ClientSampled :
 22BR-20200625

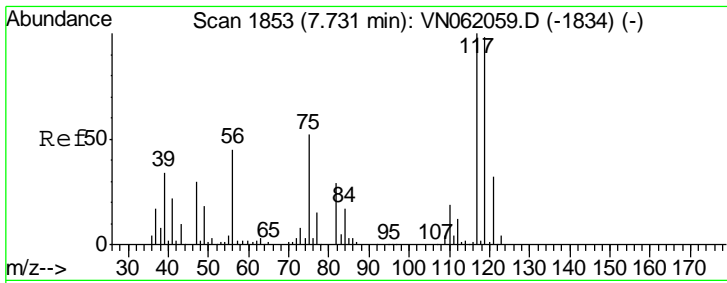
Tgt Ion	Resp	Lower	Upper
113	100		
111	101.1	82.2	123.4
192	16.8	14.0	21.0



#36
 1,1-Dichloropropene
 Concen: 4.560 ug/l
 RT: 7.63 min Scan# 1820
 Delta R.T. -0.13 min
 Lab File: VN062201.D
 Acq: 29 Jun 2020 20:32

Tgt Ion	Resp	Lower	Upper
75	100		
110	6.9	17.9	53.8#
77	0.0	24.9	37.3#



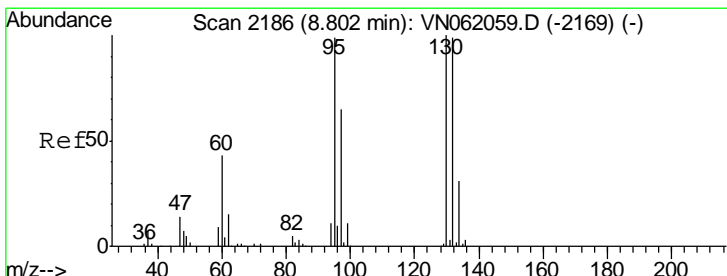
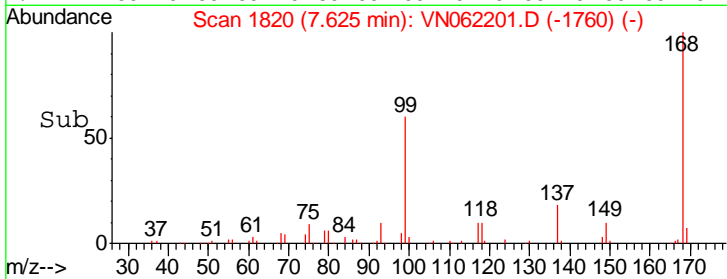
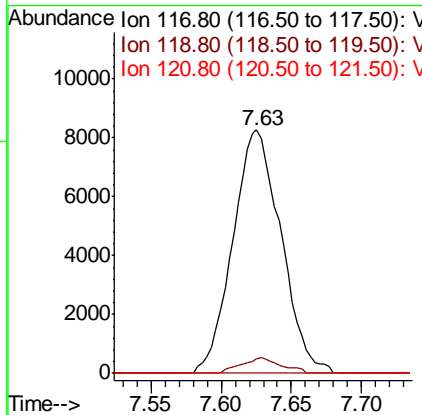
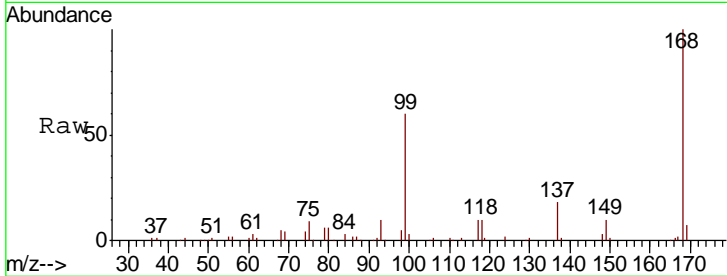


#38

Carbon Tetrachloride
 Concen: 5.573 ug/l
 RT: 7.63 min Scan# 1820
 Delta R.T. -0.11 min
 Lab File: VN062201.D
 Acq: 29 Jun 2020 20:32

Instrument :
 MSVOA_N
 ClientSampled :
 22BR-20200625

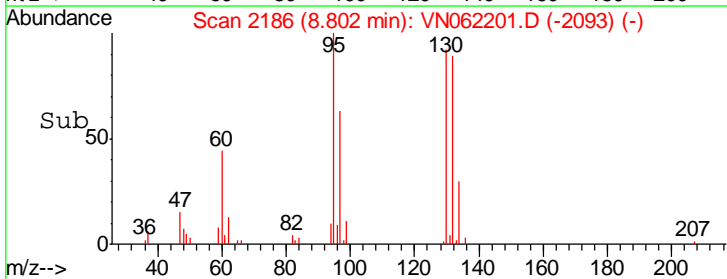
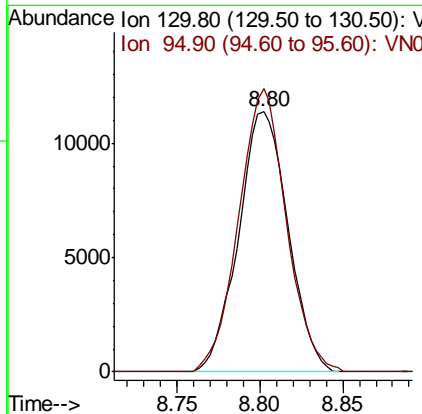
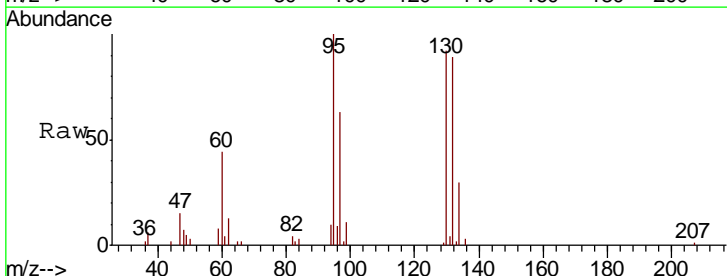
Tgt Ion	Resp	Lower	Upper
117	19706		
119	6.2	78.2	117.2#
121	0.0	25.8	38.6#

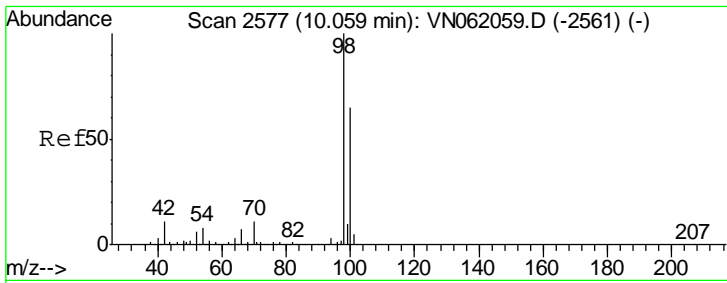


#44

Trichloroethene
 Concen: 8.215 ug/l
 RT: 8.80 min Scan# 2186
 Delta R.T. -0.00 min
 Lab File: VN062201.D
 Acq: 29 Jun 2020 20:32

Tgt Ion	Resp	Lower	Upper
130	23688		
95	108.7	0.0	197.8

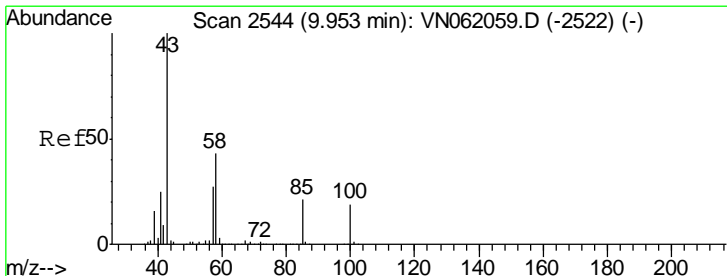
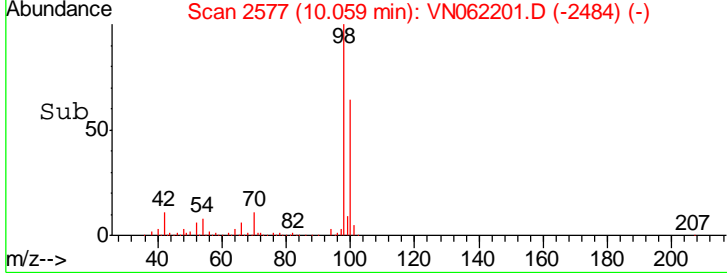
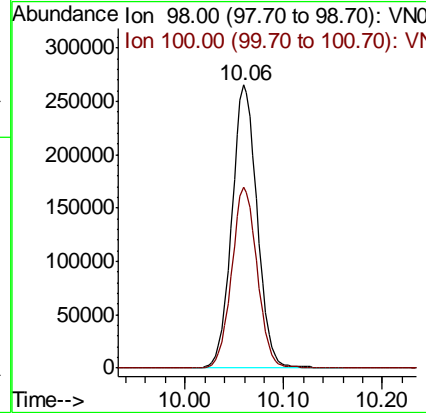
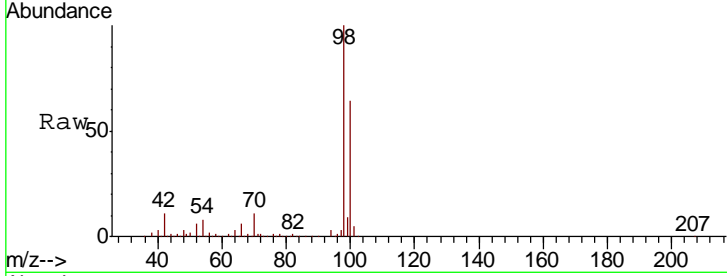




#50
 Toluene-d8
 Concen: 49.846 ug/l
 RT: 10.06 min Scan# 2577
 Delta R.T. -0.00 min
 Lab File: VN062201.D
 Acq: 29 Jun 2020 20:32

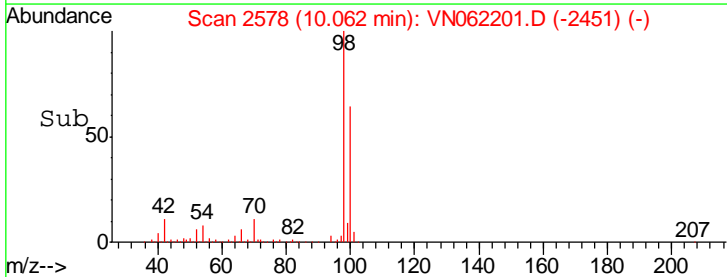
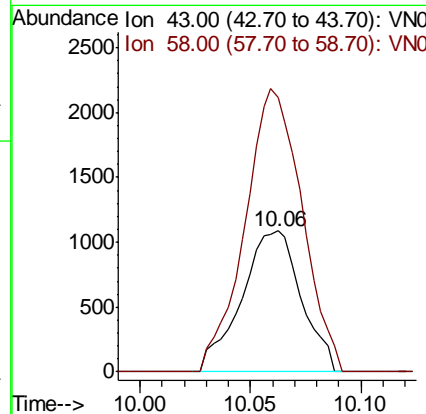
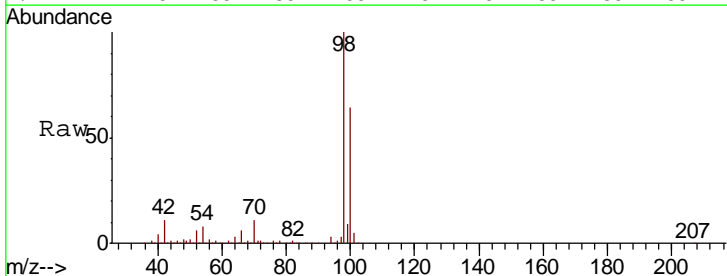
Instrument : MSVOA_N
 ClientSampled : 22BR-20200625

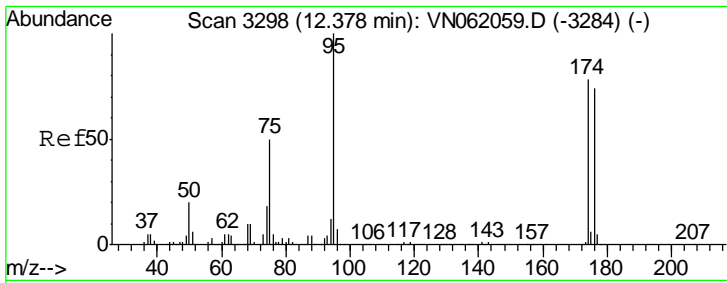
Tgt Ion	Resp	Lower	Upper
98	100		
100	64.4	51.2	76.8



#51
 4-Methyl-2-Pentanone
 Concen: 0.690 ug/l
 RT: 10.06 min Scan# 2578
 Delta R.T. 0.11 min
 Lab File: VN062201.D
 Acq: 29 Jun 2020 20:32

Tgt Ion	Resp	Lower	Upper
43	100		
58	191.8	34.2	51.2#

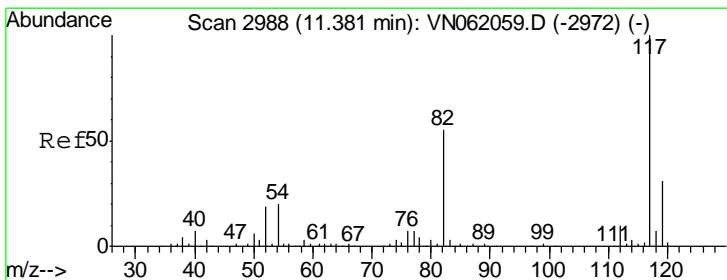
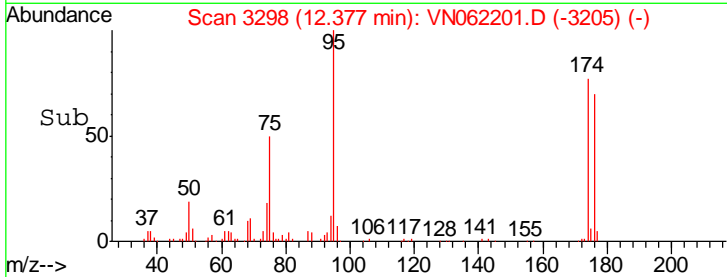
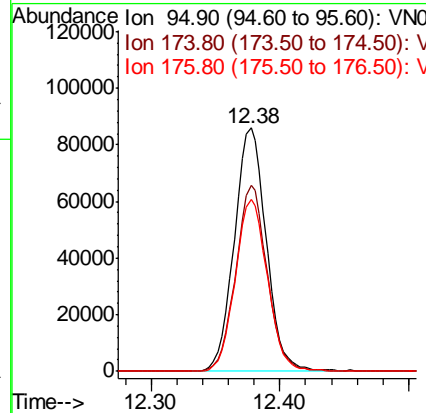
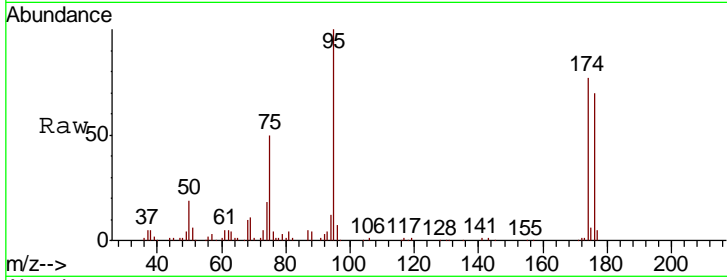




#62
 4-Bromofluorobenzene
 Concen: 45.662 ug/l
 RT: 12.38 min Scan# 3298
 Delta R.T. -0.00 min
 Lab File: VN062201.D
 Acq: 29 Jun 2020 20:32

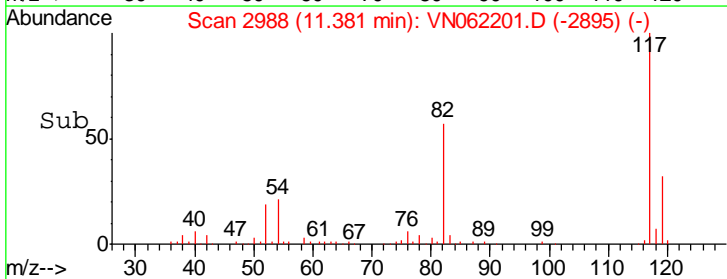
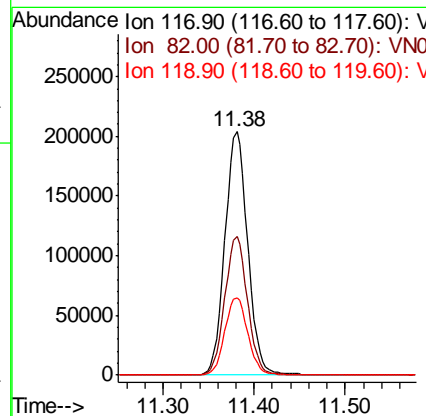
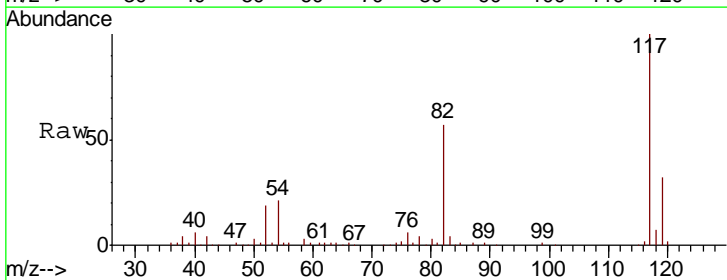
Instrument :
 MSVOA_N
 ClientSampleId :
 22BR-20200625

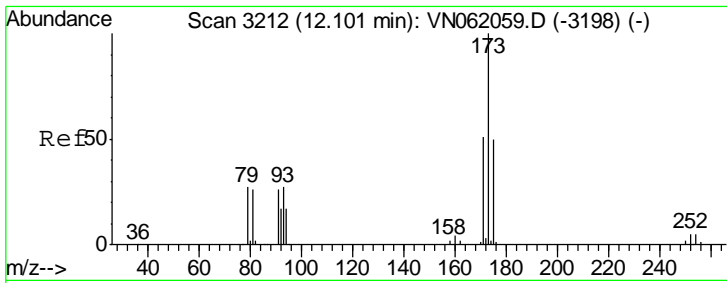
Tgt Ion	Resp	Lower	Upper
95	147612		
174	75.6	0.0	154.8
176	71.5	0.0	147.4



#63
 Chlorobenzene-d5
 Concen: 50.000 ug/l
 RT: 11.38 min Scan# 2988
 Delta R.T. -0.00 min
 Lab File: VN062201.D
 Acq: 29 Jun 2020 20:32

Tgt Ion	Resp	Lower	Upper
117	355609		
82	56.9	43.8	65.8
119	31.9	25.2	37.8

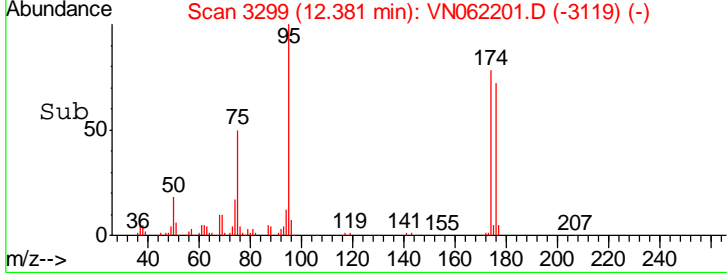
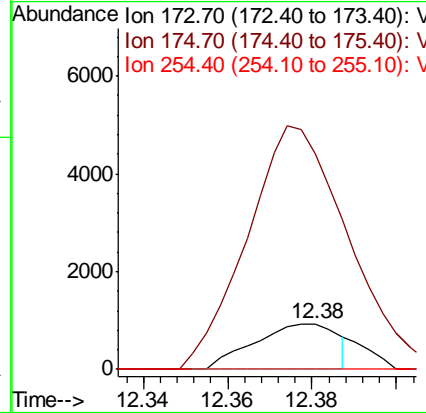
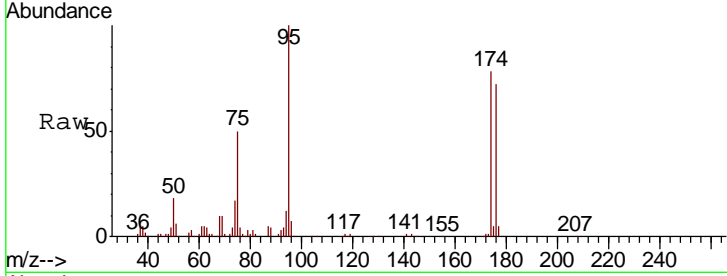




#71
 Bromoform
 Concen: 0.671 ug/l
 RT: 12.38 min Scan# 3299
 Delta R.T. 0.28 min
 Lab File: VN062201.D
 Acq: 29 Jun 2020 20:32

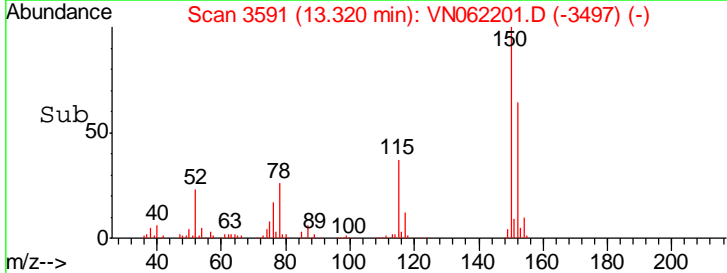
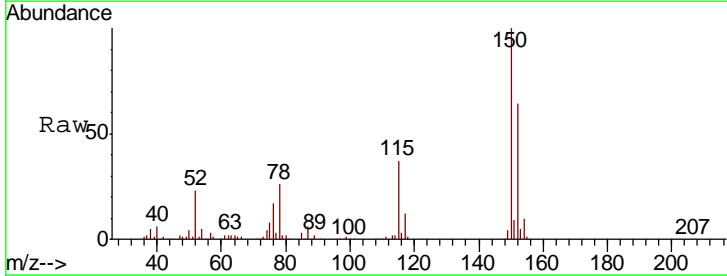
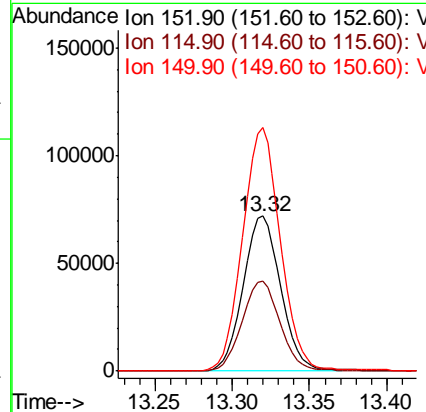
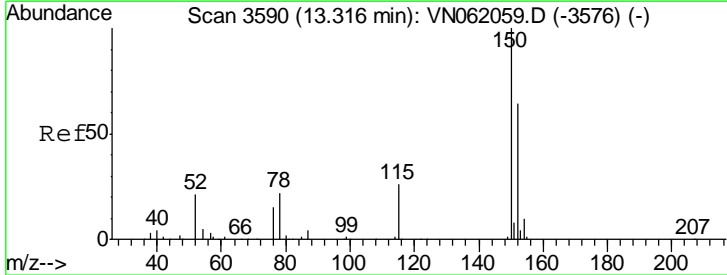
Instrument :
 MSVOA_N
 ClientSampled :
 22BR-20200625

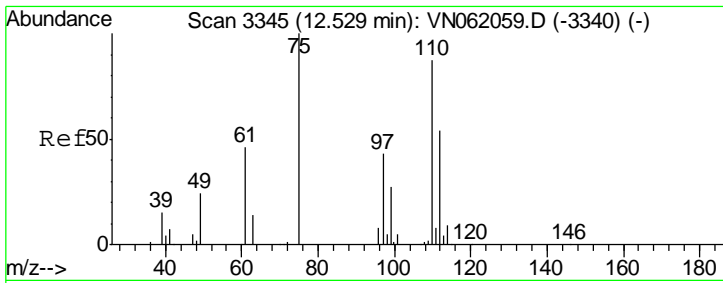
Tgt Ion	Resp	Lower	Upper
173	1288		
175	540.9	24.7	74.1#
254	0.0	0.0	0.0



#72
 1,4-Dichlorobenzene-d4
 Concen: 50.000 ug/l
 RT: 13.32 min Scan# 3591
 Delta R.T. 0.00 min
 Lab File: VN062201.D
 Acq: 29 Jun 2020 20:32

Tgt Ion	Resp	Lower	Upper
152	122002		
115	58.9	29.5	88.5
150	158.1	0.0	351.4

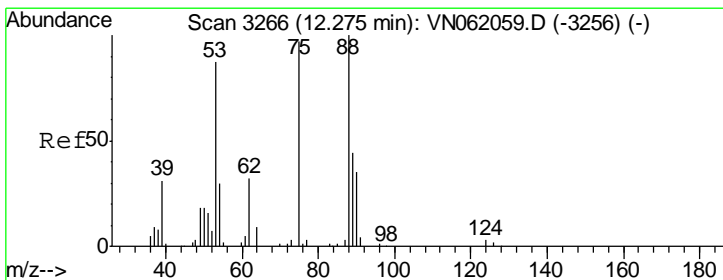
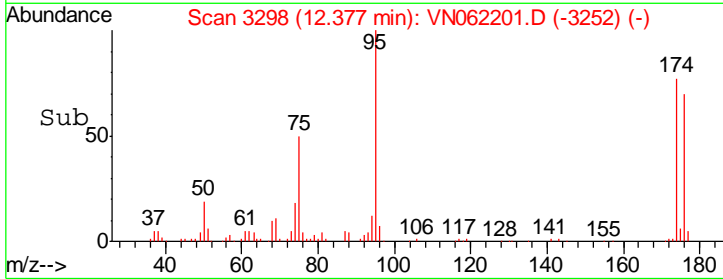
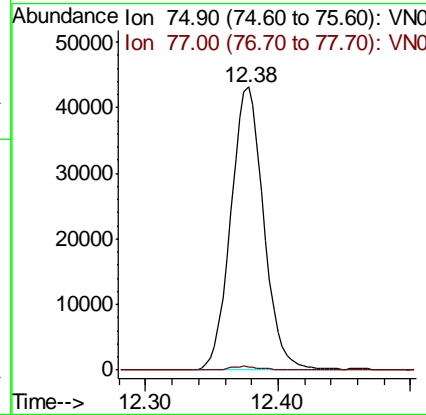
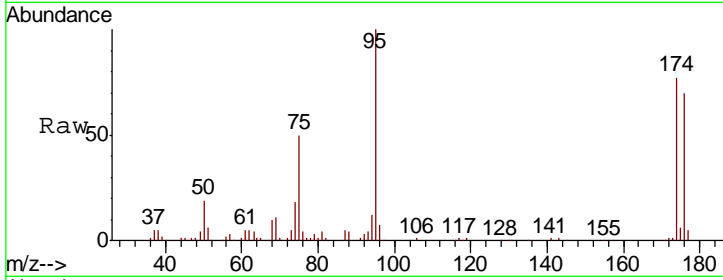




#76
 1,2,3-Trichloropropane
 Concen: 25.867 ug/l
 RT: 12.38 min Scan# 3298
 Delta R.T. -0.15 min
 Lab File: VN062201.D
 Acq: 29 Jun 2020 20:32

Instrument :
 MSVOA_N
 ClientSampleId :
 22BR-20200625

Tgt Ion: 75 Resp: 74292
 Ion Ratio Lower Upper
 75 100
 77 1.2 0.0 0.0#



#81
 trans-1,4-Dichloro-2-butene
 Concen: 75.543 ug/l
 RT: 12.38 min Scan# 3298
 Delta R.T. 0.10 min
 Lab File: VN062201.D
 Acq: 29 Jun 2020 20:32

Tgt Ion: 75 Resp: 74292
 Ion Ratio Lower Upper
 75 100
 53 0.0 72.0 108.0#
 89 0.0 36.9 55.3#

