

Data Path : Z:\VOASRV\HPCHEM1\MSVOA N\DATA\VN062920\  
 Data File : VN062214.D  
 Acq On : 30 Jun 2020 2:59  
 Operator : JC/MD  
 Sample : L3136-08  
 Misc : 5.00mL/MSVOA N/WATER  
 ALS Vial : 38 Sample Multiplier: 1

Instrument :  
 MSVOA\_N  
 ClientSampleId :  
 BP-MW180-SOIL-572-574

Quant Time: Jun 30 04:33:51 2020  
 Quant Method : Z:\VOASRV\HPCHEM1\MSVOA\_N\METHODS\82N062420W.M  
 Quant Title : SW846 8260  
 QLast Update : Wed Jun 24 15:33:00 2020  
 Response via : Initial Calibration

Internal Standards	R.T.	QIon	Response	Conc	Units	Dev(Min)
1) Pentafluorobenzene	7.63	168	216423	50.00	ug/l	0.00
34) 1,4-Difluorobenzene	8.55	114	424942	50.00	ug/l	0.00
63) Chlorobenzene-d5	11.38	117	412356	50.00	ug/l	0.00
72) 1,4-Dichlorobenzene-d4	13.32	152	153624	50.00	ug/l	0.00

## System Monitoring Compounds

33) 1,2-Dichloroethane-d4	7.99	65	165404	54.46	ug/l	0.00
Spiked Amount	50.000		Recovery	=	108.92%	
35) Dibromofluoromethane	7.55	113	135874	49.84	ug/l	0.00
Spiked Amount	50.000		Recovery	=	99.68%	
50) Toluene-d8	10.06	98	537640	49.34	ug/l	0.00
Spiked Amount	50.000		Recovery	=	98.68%	
62) 4-Bromofluorobenzene	12.38	95	180445	49.01	ug/l	0.00
Spiked Amount	50.000		Recovery	=	98.02%	

## Target Compounds

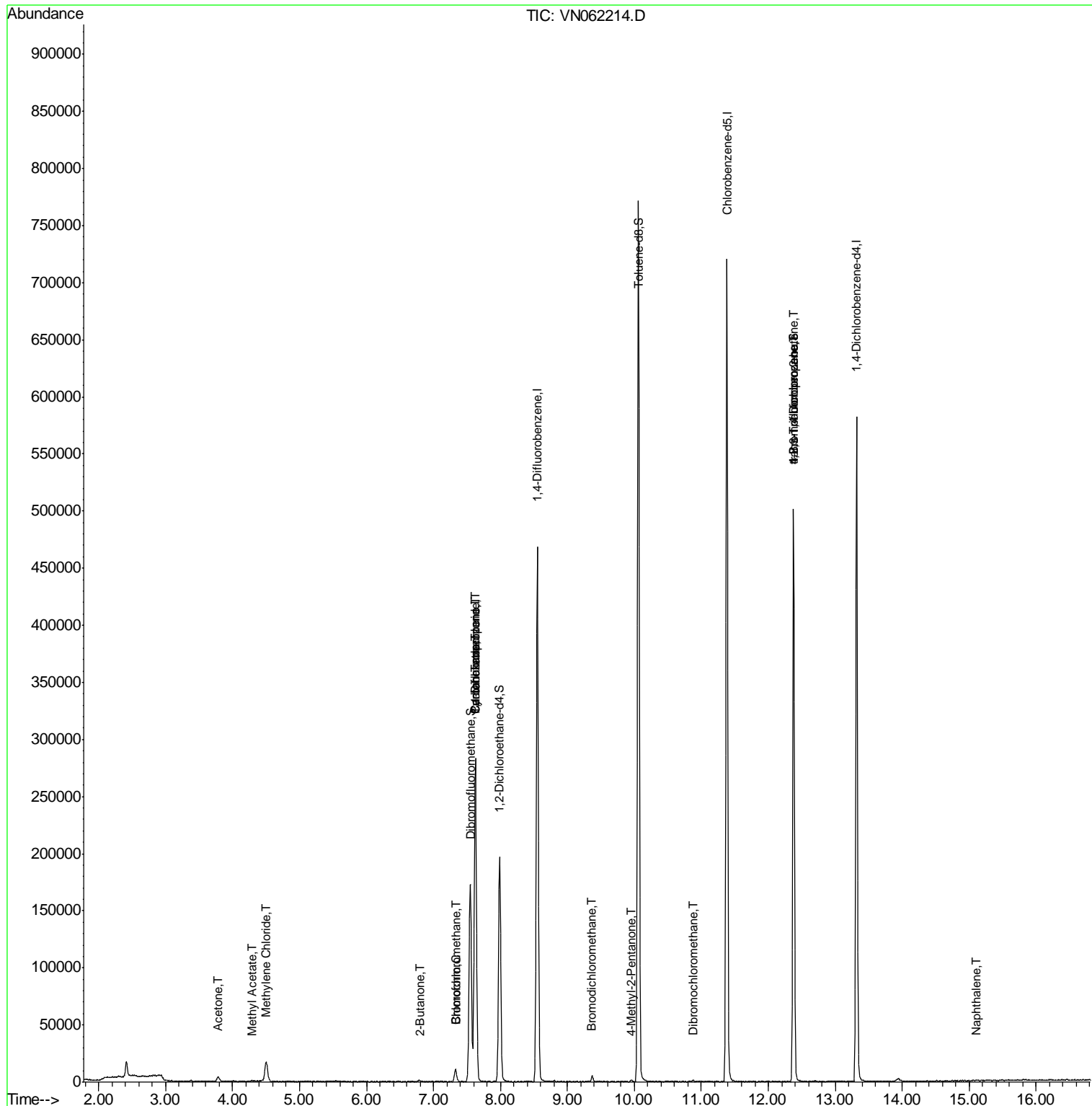
					Qvalue	
3) Chloromethane	2.04	50	163	Below Cal	#	41
16) Acetone	3.78	43	7612	3.999	ug/l	100
18) Methyl Acetate	4.29	43	783	0.324	ug/l #	46
20) Methylene Chloride	4.51	84	13620	4.689	ug/l	99
25) 2-Butanone	6.79	43	1167	0.786	ug/l #	44
28) Bromochloromethane	7.34	49	783	0.364	ug/l #	11
30) Chloroform	7.33	83	10729	2.126	ug/l	100
31) Cyclohexane	7.63	56	5217	1.243	ug/l #	1
36) 1,1-Dichloropropene	7.63	75	19418	4.546	ug/l #	48
38) Carbon Tetrachloride	7.63	117	22505	5.589	ug/l #	16
47) Bromodichloromethane	9.37	83	3979	0.905	ug/l #	91
51) 4-Methyl-2-Pentanone	9.95	43	1147	0.340	ug/l #	63
60) Dibromochloromethane	10.87	129	851	0.257	ug/l	98
76) 1,2,3-Trichloropropane	12.38	75	88749	24.540	ug/l #	100
81) trans-1,4-Dichloro-2-buten	12.38	75	88749	71.667	ug/l #	13
95) Naphthalene	15.11	128	365	4.041	ug/l #	69

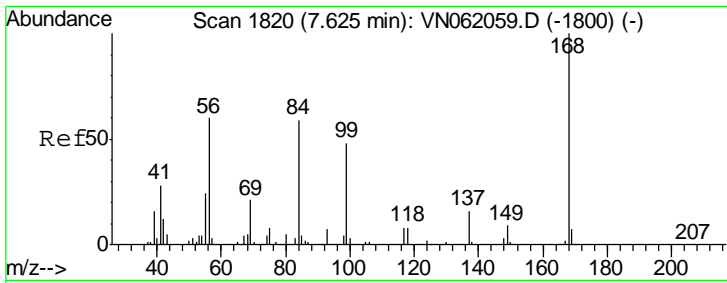
(#) = qualifier out of range (m) = manual integration (+) = signals summed

Data Path : Z:\VOASRV\HPCHEM1\MSVOA N\DATA\VN062920\  
 Data File : VN062214.D  
 Acq On : 30 Jun 2020 2:59  
 Operator : JC/MD  
 Sample : L3136-08  
 Misc : 5.00mL/MSVOA N/WATER  
 ALS Vial : 38 Sample Multiplier: 1

**Instrument :**  
 MSVOA\_N  
**Client Sampled :**  
 BP-MW180-SOIL-572-574

Quant Time: Jun 30 04:33:51 2020  
 Quant Method : Z:\VOASRV\HPCHEM1\MSVOA\_N\METHODS\82N062420W.M  
 Quant Title : SW846 8260  
 QLast Update : Wed Jun 24 15:33:00 2020  
 Response via : Initial Calibration

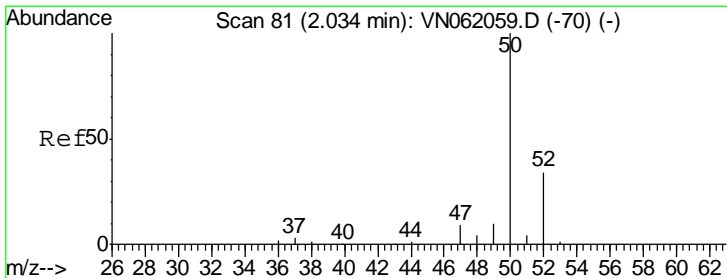
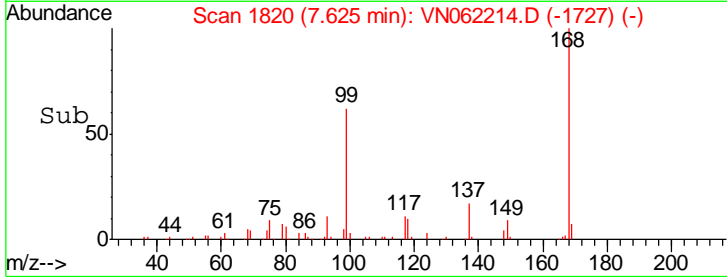
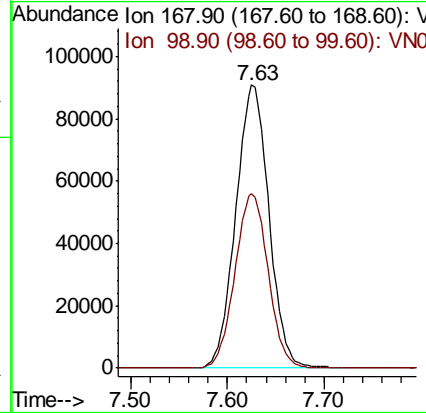
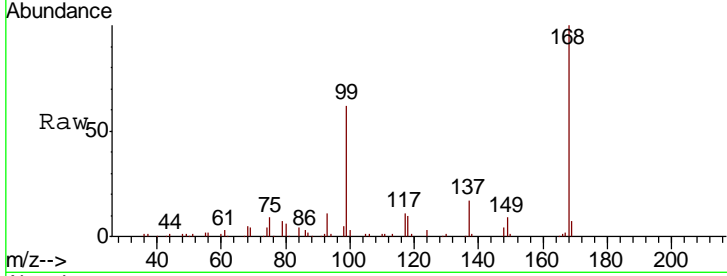




#1  
 Pentafluorobenzene  
 Concen: 50.000 ug/l  
 RT: 7.63 min Scan# 1820  
 Delta R.T. -0.00 min  
 Lab File: VN062214.D  
 Acq: 30 Jun 2020 2:59

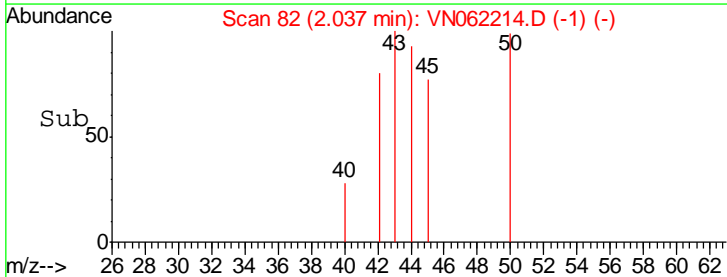
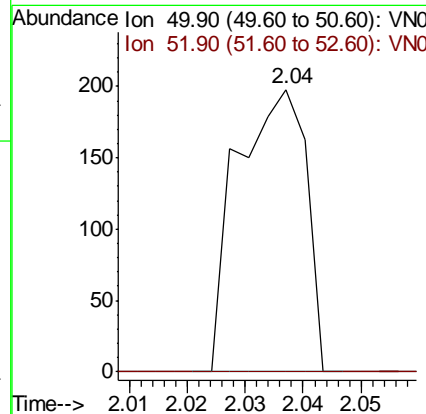
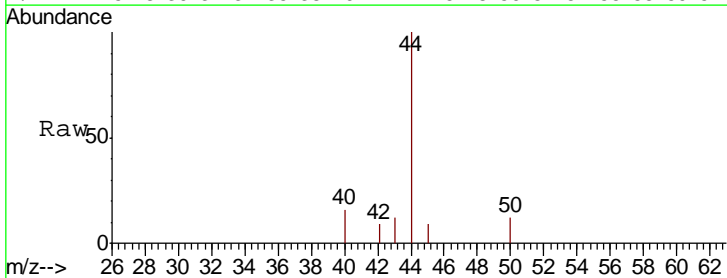
Instrument :  
 MSVOA\_N  
 ClientSampled :  
 BP-MW180-SOIL-572-574

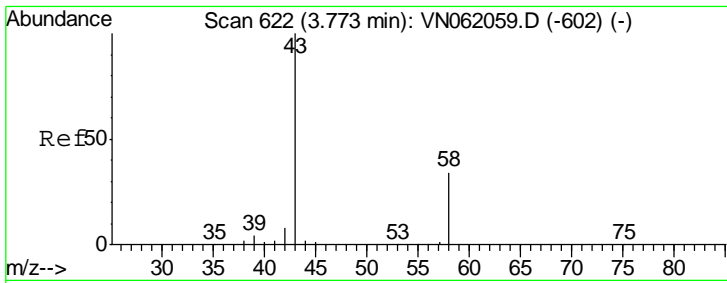
Tgt Ion: 168 Resp: 216423  
 Ion Ratio Lower Upper  
 168 100  
 99 61.5 45.8 68.8



#3  
 Chloromethane  
 Concen: Below Cal  
 RT: 2.04 min Scan# 82  
 Delta R.T. 0.00 min  
 Lab File: VN062214.D  
 Acq: 30 Jun 2020 2:59

Tgt Ion: 50 Resp: 163  
 Ion Ratio Lower Upper  
 50 100  
 52 0.0 27.0 40.6#

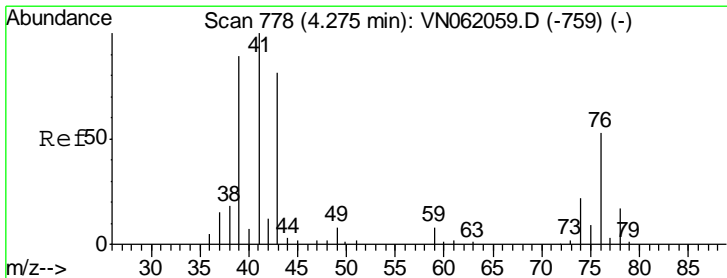
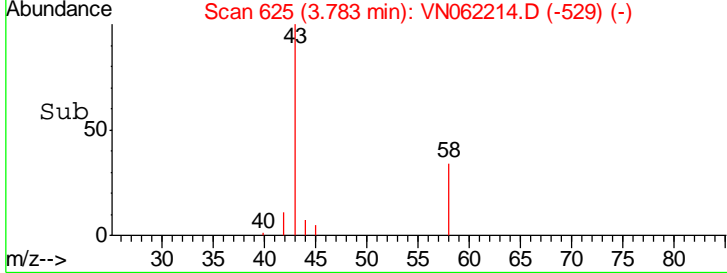
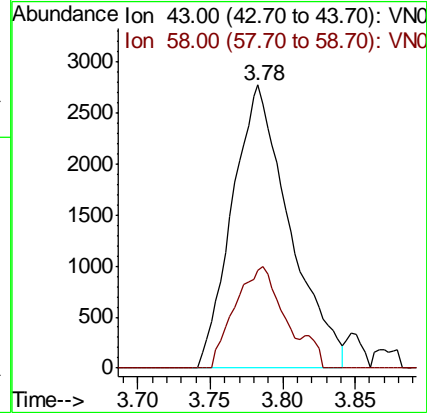
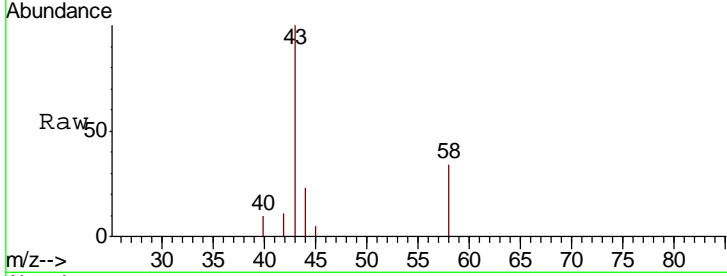




#16  
 Acetone  
 Concen: 3.999 ug/l  
 RT: 3.78 min Scan# 625  
 Delta R.T. 0.01 min  
 Lab File: VN062214.D  
 Acq: 30 Jun 2020 2:59

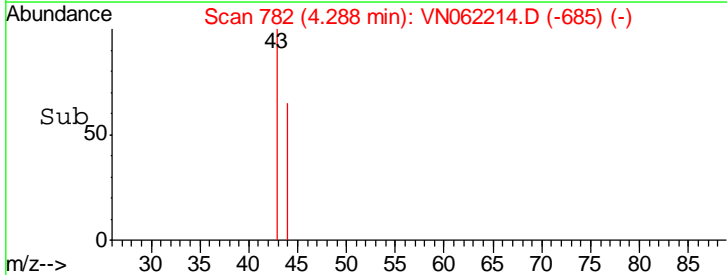
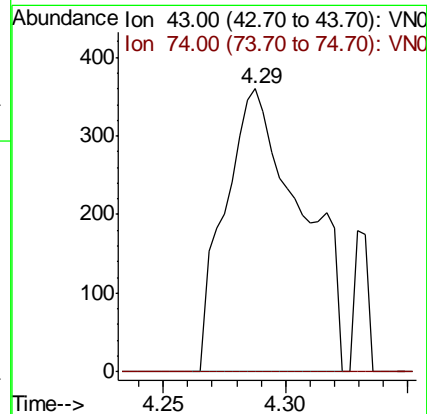
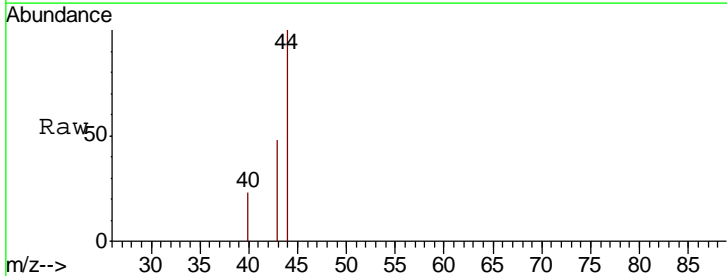
**Instrument :**  
 MSVOA\_N  
**ClientSampled :**  
 BP-MW180-SOIL-572-574

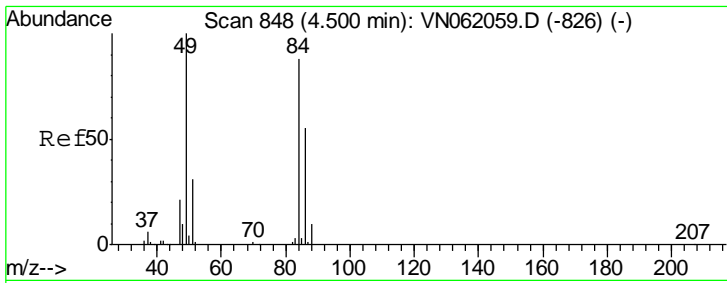
Tgt Ion: 43 Resp: 7612  
 Ion Ratio Lower Upper  
 43 100  
 58 34.4 27.5 41.3



#18  
 Methyl Acetate  
 Concen: 0.324 ug/l  
 RT: 4.29 min Scan# 782  
 Delta R.T. 0.01 min  
 Lab File: VN062214.D  
 Acq: 30 Jun 2020 2:59

Tgt Ion: 43 Resp: 783  
 Ion Ratio Lower Upper  
 43 100  
 74 0.0 22.9 34.3#

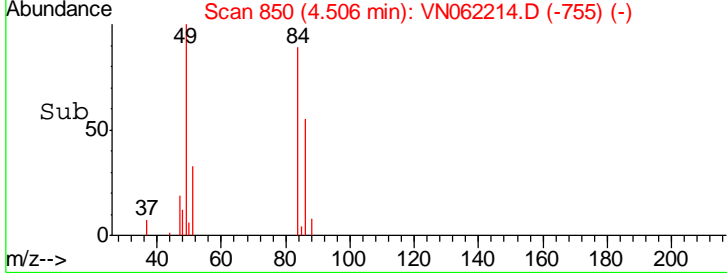
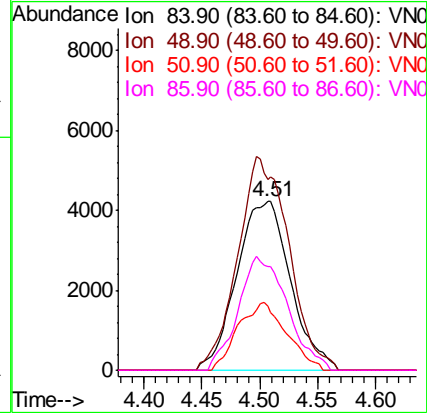
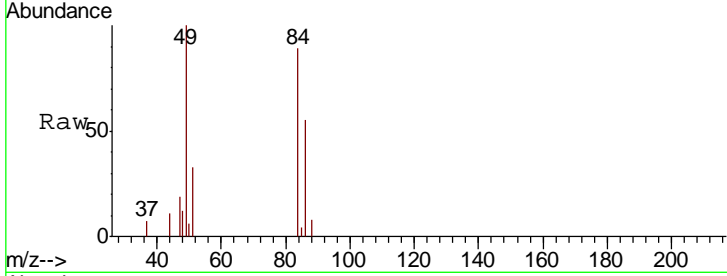




#20  
 Methylene Chloride  
 Concen: 4.689 ug/l  
 RT: 4.51 min Scan# 850  
 Delta R.T. 0.01 min  
 Lab File: VN062214.D  
 Acq: 30 Jun 2020 2:59

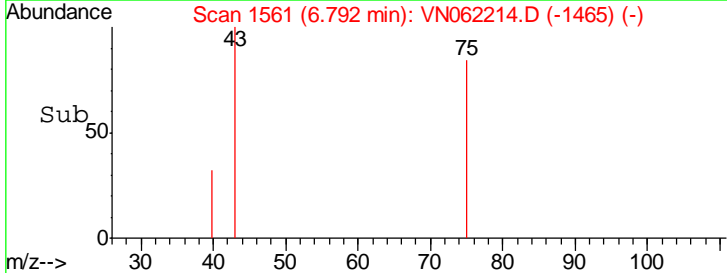
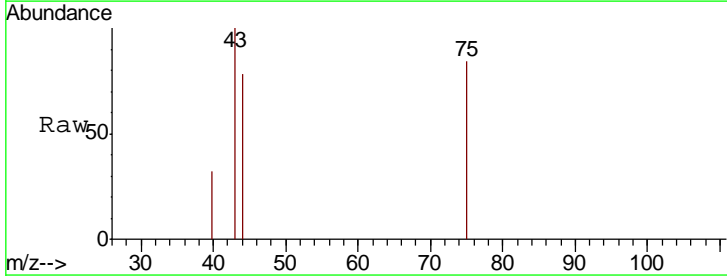
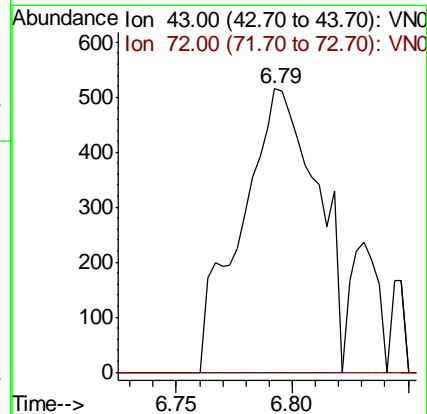
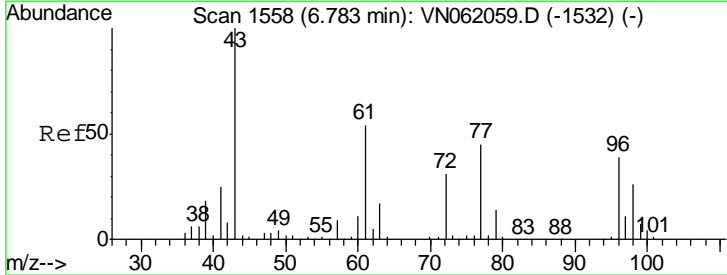
**Instrument :**  
 MSVOA\_N  
**ClientSampled :**  
 BP-MW180-SOIL-572-574

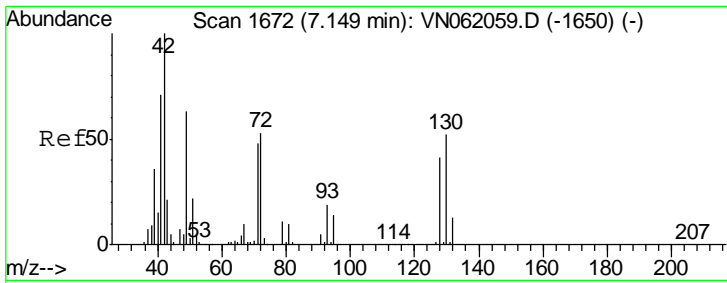
Tgt Ion	Resp	Lower	Upper
84	13620		
49	112.8	90.6	136.0
51	37.6	27.8	41.8
86	61.7	50.1	75.1



#25  
 2-Butanone  
 Concen: 0.786 ug/l  
 RT: 6.79 min Scan# 1561  
 Delta R.T. 0.01 min  
 Lab File: VN062214.D  
 Acq: 30 Jun 2020 2:59

Tgt Ion	Resp	Lower	Upper
43	1167		
72	0.0	24.8	37.2#

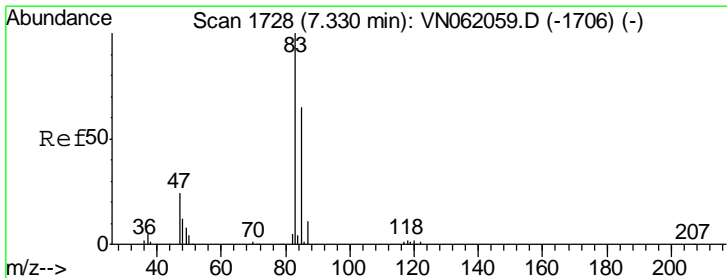
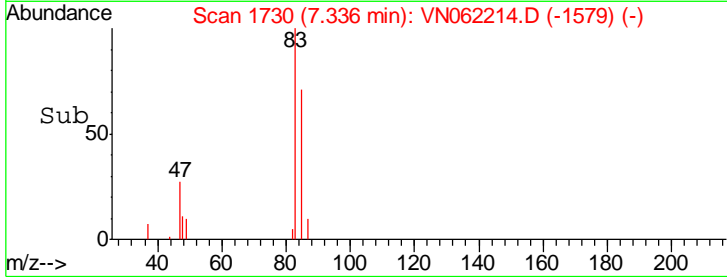
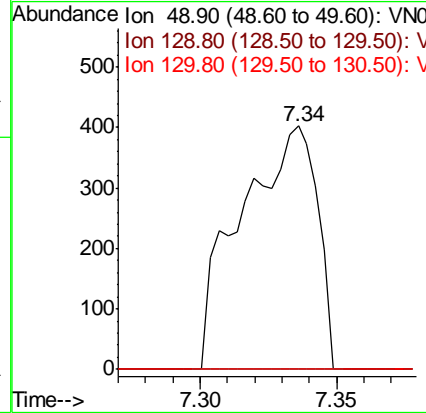
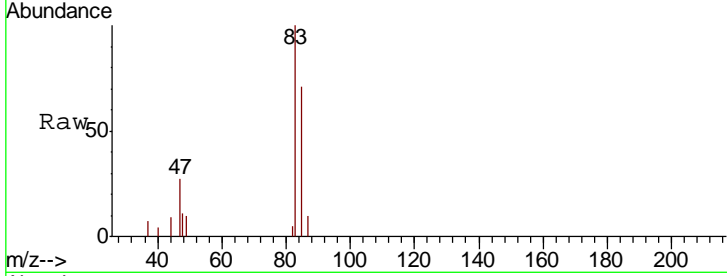




#28  
 Bromochloromethane  
 Concen: 0.364 ug/l  
 RT: 7.34 min Scan# 1730  
 Delta R.T. 0.19 min  
 Lab File: VN062214.D  
 Acq: 30 Jun 2020 2:59

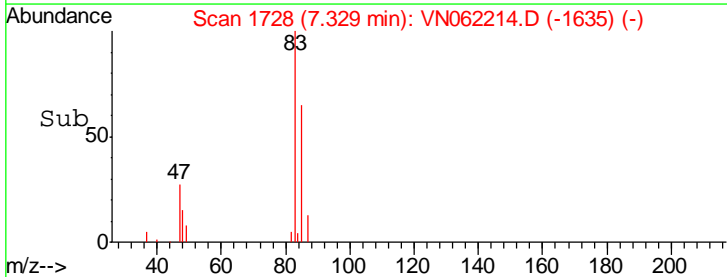
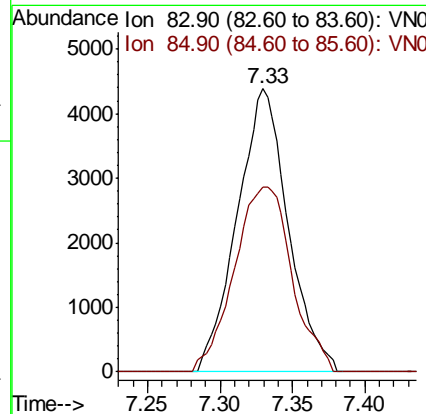
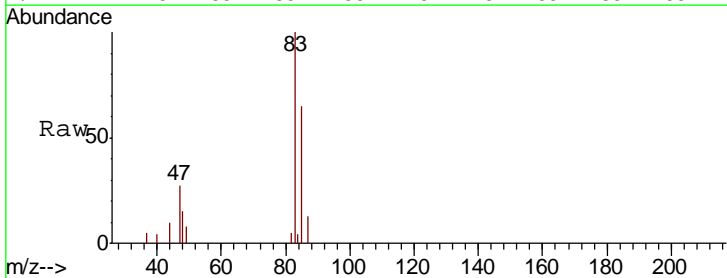
Instrument : MSVOA\_N  
 ClientSampled : BP-MW180-SOIL-572-574

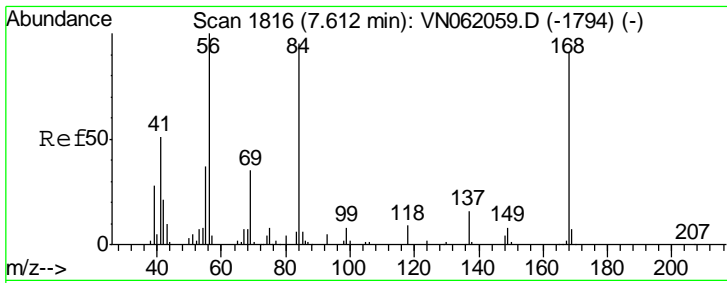
Tgt Ion	Resp	Lower	Upper
49	100		
129	0.0	0.0	4.4
130	0.0	65.5	98.3#



#30  
 Chloroform  
 Concen: 2.126 ug/l  
 RT: 7.33 min Scan# 1728  
 Delta R.T. -0.00 min  
 Lab File: VN062214.D  
 Acq: 30 Jun 2020 2:59

Tgt Ion	Resp	Lower	Upper
83	100		
85	65.3	52.3	78.5

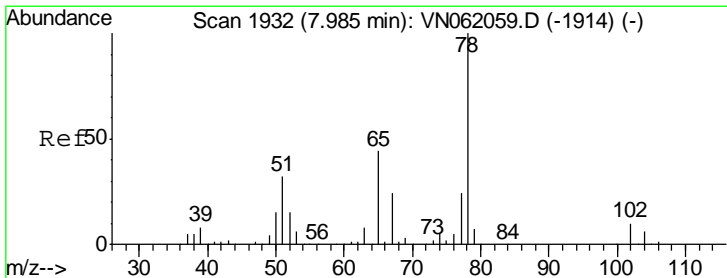
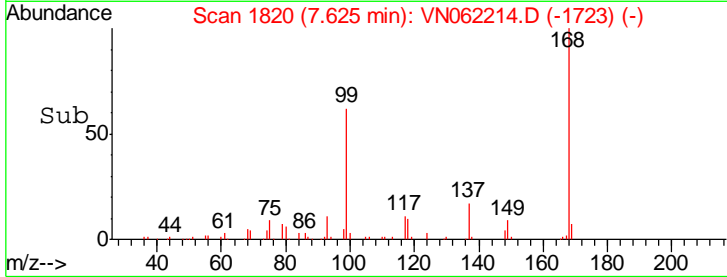
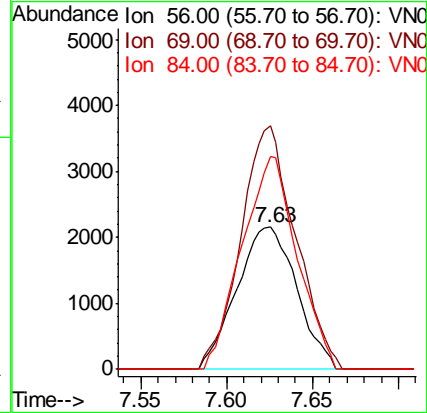
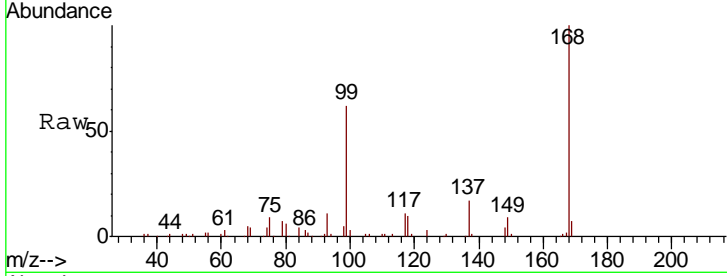




#31  
 Cyclohexane  
 Concen: 1.243 ug/l  
 RT: 7.63 min Scan# 1820  
 Delta R.T. 0.01 min  
 Lab File: VN062214.D  
 Acq: 30 Jun 2020 2:59

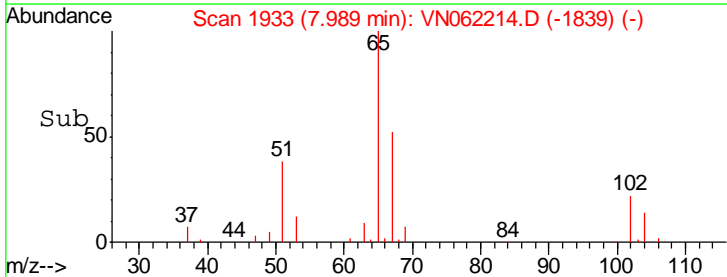
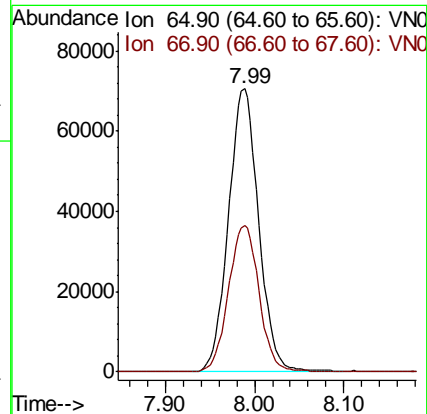
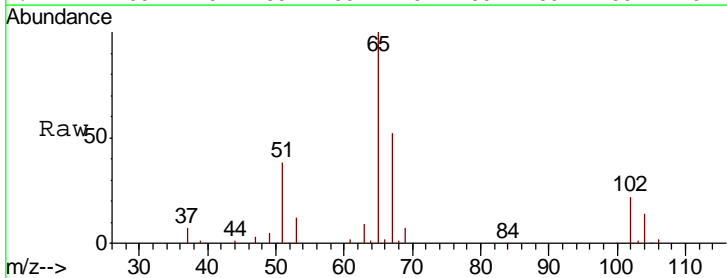
Instrument :  
 MSVOA\_N  
 ClientSampleId :  
 BP-MW180-SOIL-572-574

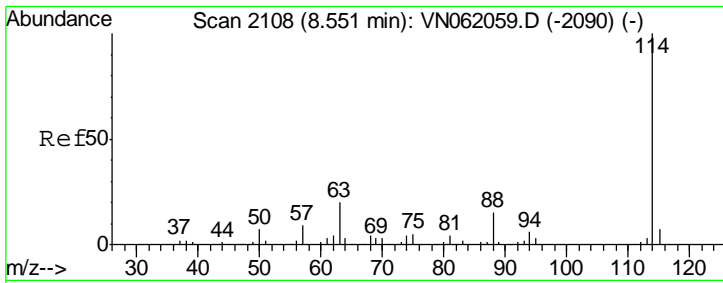
Tgt Ion	Resp	Lower	Upper
56	100		
69	171.5	28.0	42.0#
84	149.6	76.1	114.1#



#33  
 1,2-Dichloroethane-d4  
 Concen: 54.460 ug/l  
 RT: 7.99 min Scan# 1933  
 Delta R.T. 0.00 min  
 Lab File: VN062214.D  
 Acq: 30 Jun 2020 2:59

Tgt Ion	Resp	Lower	Upper
65	100		
67	52.4	0.0	106.2

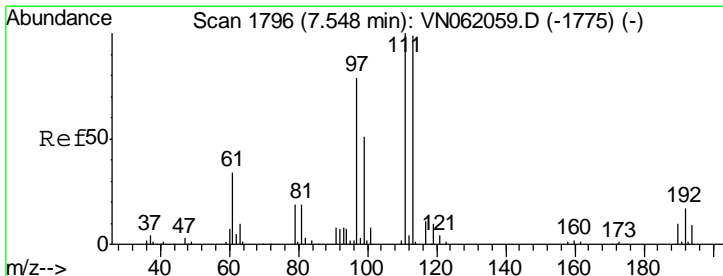
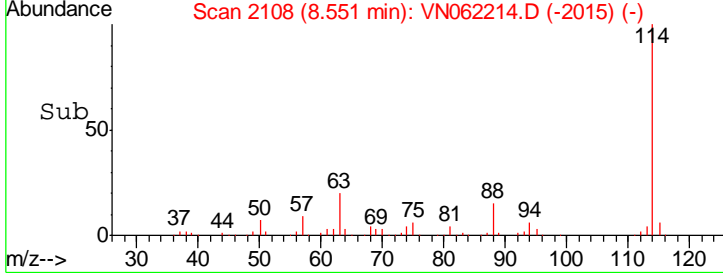
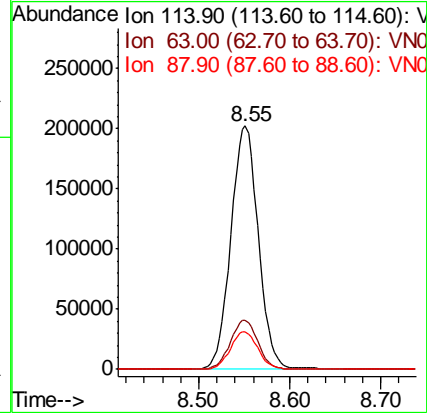
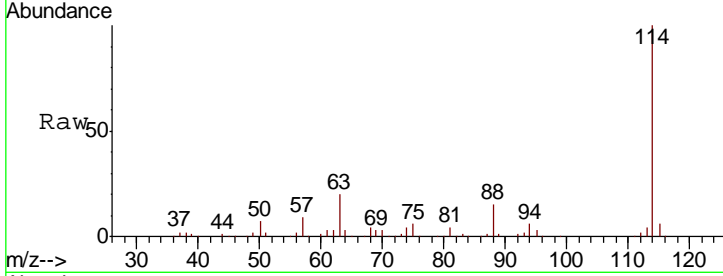




#34  
 1,4-Difluorobenzene  
 Concen: 50.000 ug/l  
 RT: 8.55 min Scan# 2108  
 Delta R.T. -0.00 min  
 Lab File: VN062214.D  
 Acq: 30 Jun 2020 2:59

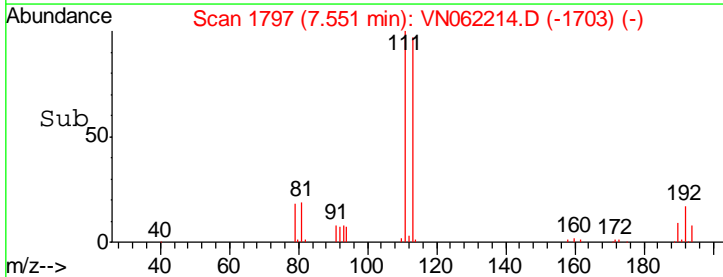
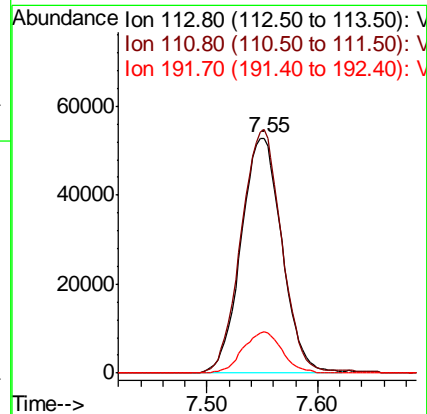
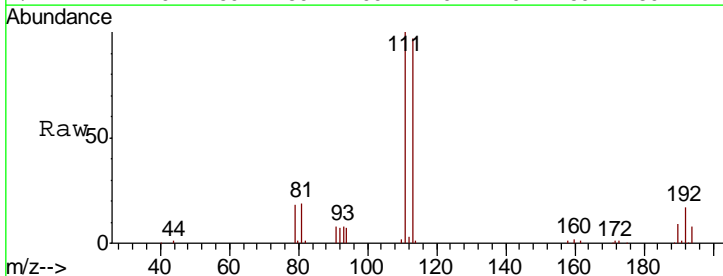
Instrument :  
 MSVOA\_N  
 ClientSampled :  
 BP-MW180-SOIL-572-574

Tgt Ion	Resp	Lower	Upper
114	424942		
63	20.0	0.0	39.2
88	15.4	0.0	30.8

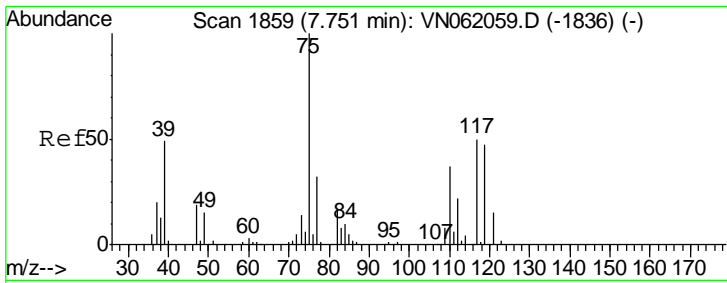


#35  
 Dibromofluoromethane  
 Concen: 49.840 ug/l  
 RT: 7.55 min Scan# 1797  
 Delta R.T. 0.00 min  
 Lab File: VN062214.D  
 Acq: 30 Jun 2020 2:59

Tgt Ion	Resp	Lower	Upper
113	135874		
111	102.7	82.2	123.4
192	16.8	14.0	21.0



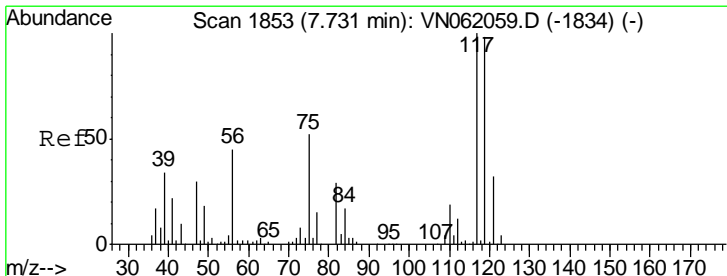
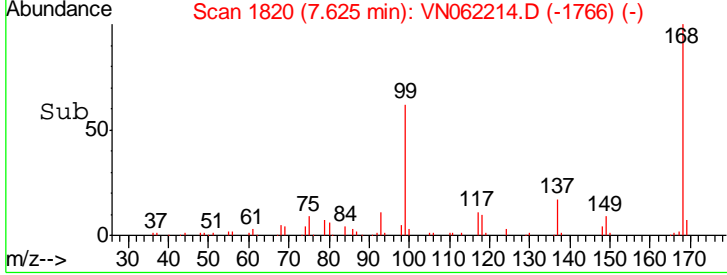
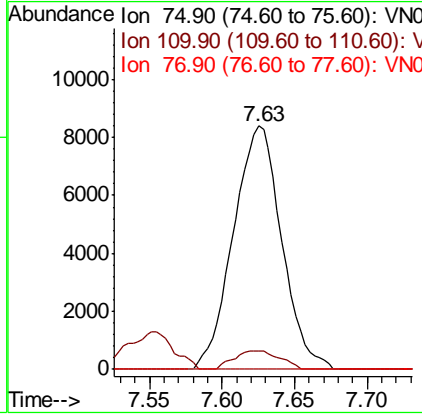
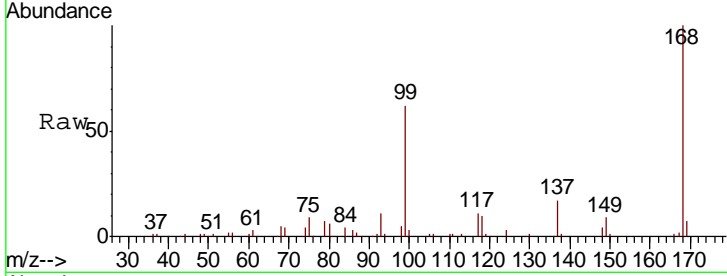




#36  
 1,1-Dichloropropene  
 Concen: 4.546 ug/l  
 RT: 7.63 min Scan# 1820  
 Delta R.T. -0.13 min  
 Lab File: VN062214.D  
 Acq: 30 Jun 2020 2:59

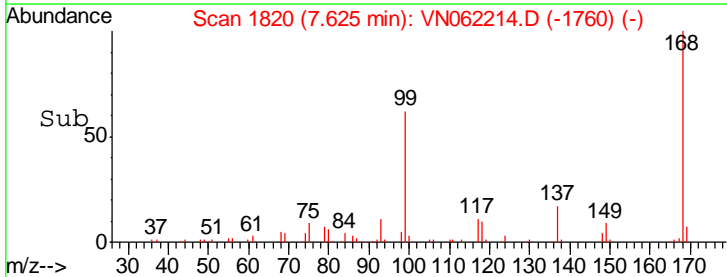
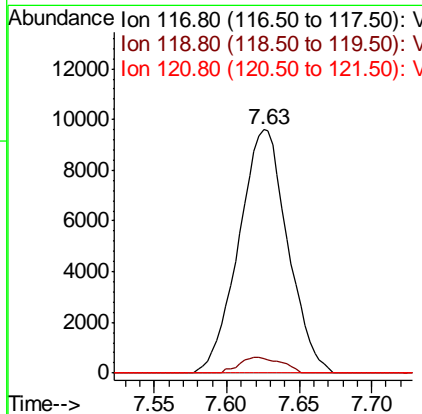
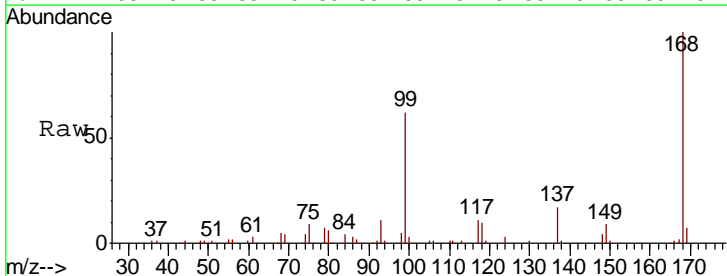
**Instrument :**  
 MSVOA\_N  
**ClientSampled :**  
 BP-MW180-SOIL-572-574

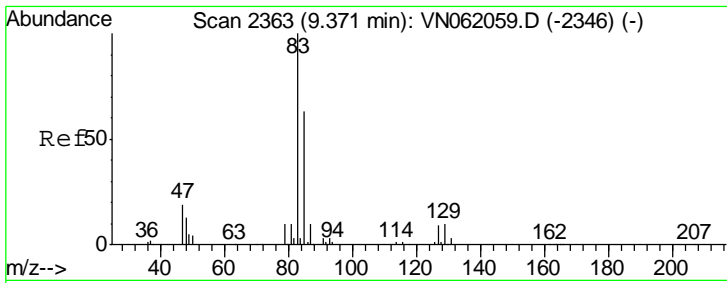
Tgt Ion	Resp	Lower	Upper
75	19418		
110	7.2	17.9	53.8#
77	0.0	24.9	37.3#



#38  
 Carbon Tetrachloride  
 Concen: 5.589 ug/l  
 RT: 7.63 min Scan# 1820  
 Delta R.T. -0.11 min  
 Lab File: VN062214.D  
 Acq: 30 Jun 2020 2:59

Tgt Ion	Resp	Lower	Upper
117	22505		
119	6.0	78.2	117.2#
121	0.0	25.8	38.6#

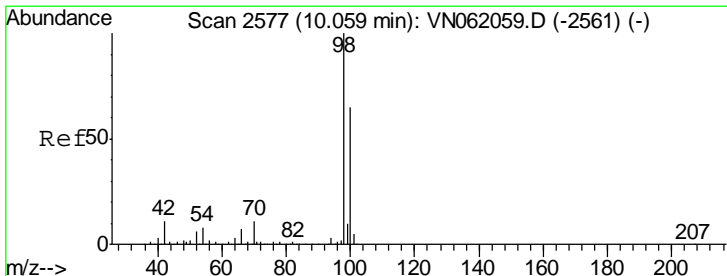
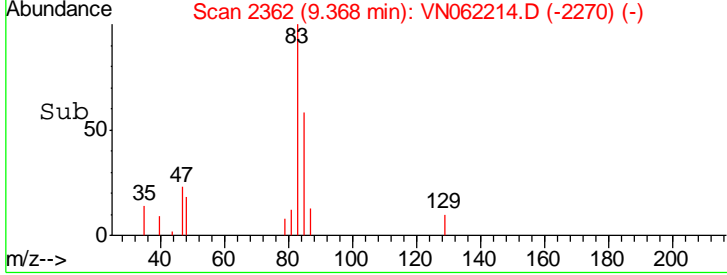
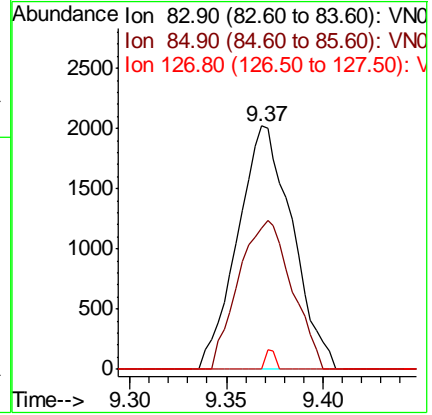
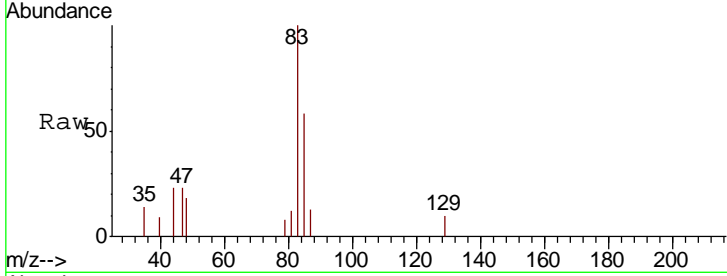




#47  
 Bromodichloromethane  
 Concen: 0.905 ug/l  
 RT: 9.37 min Scan# 2362  
 Delta R.T. -0.00 min  
 Lab File: VN062214.D  
 Acq: 30 Jun 2020 2:59

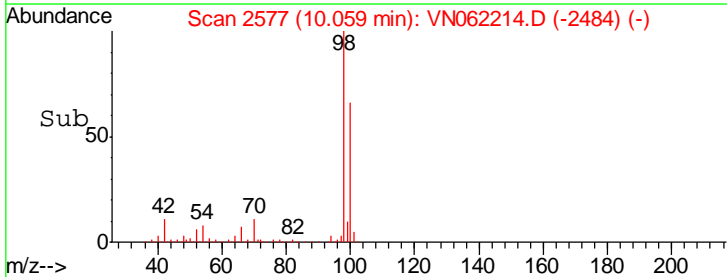
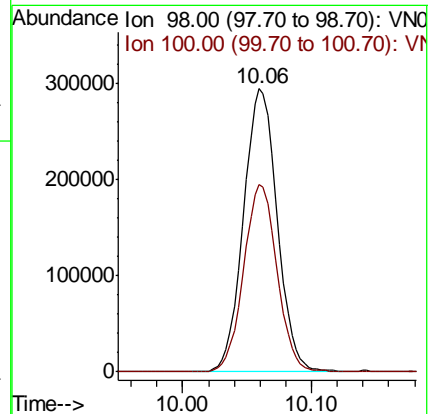
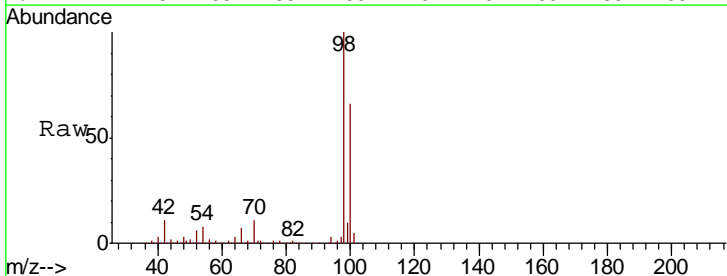
**Instrument :**  
 MSVOA\_N  
**ClientSampled :**  
 BP-MW180-SOIL-572-574

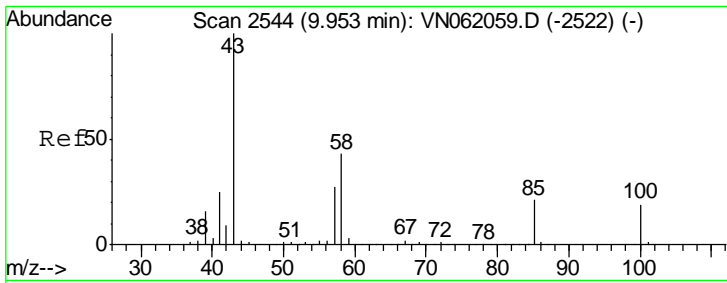
Tgt Ion	Resp	Lower	Upper
83	100		
85	57.9	50.3	75.5
127	0.0	6.9	10.3#



#50  
 Toluene-d8  
 Concen: 49.336 ug/l  
 RT: 10.06 min Scan# 2577  
 Delta R.T. -0.00 min  
 Lab File: VN062214.D  
 Acq: 30 Jun 2020 2:59

Tgt Ion	Resp	Lower	Upper
98	100		
100	65.7	51.2	76.8

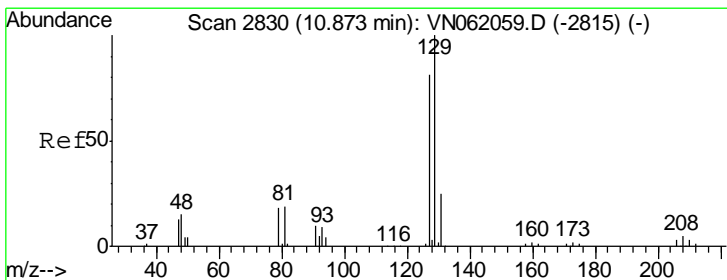
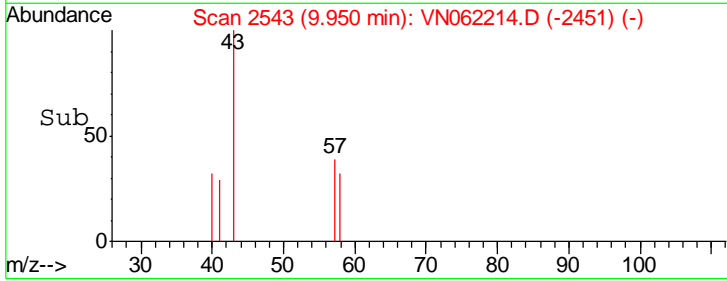
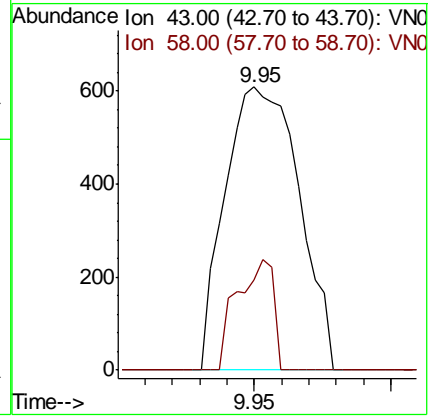
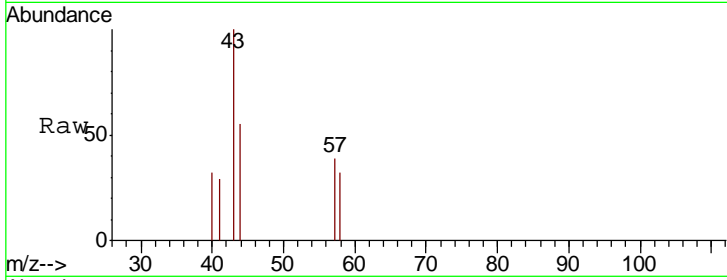




#51  
 4-Methyl-2-Pentanone  
 Concen: 0.340 ug/l  
 RT: 9.95 min Scan# 2543  
 Delta R.T. -0.00 min  
 Lab File: VN062214.D  
 Acq: 30 Jun 2020 2:59

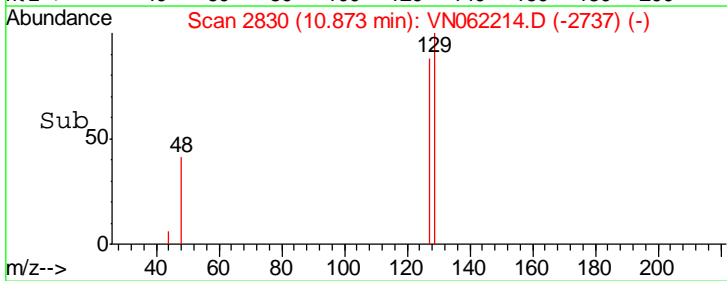
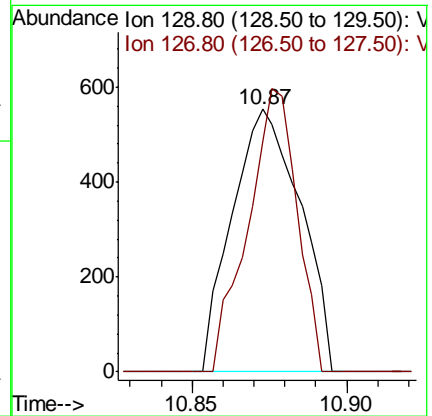
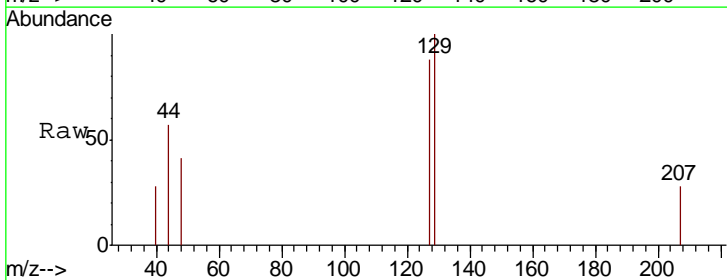
**Instrument :**  
 MSVOA\_N  
**ClientSampled :**  
 BP-MW180-SOIL-572-574

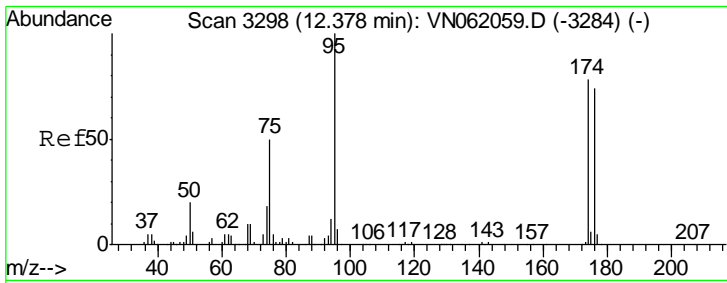
Tgt Ion: 43 Resp: 1147  
 Ion Ratio Lower Upper  
 43 100  
 58 19.3 34.2 51.2#



#60  
 Dibromochloromethane  
 Concen: 0.257 ug/l  
 RT: 10.87 min Scan# 2830  
 Delta R.T. -0.00 min  
 Lab File: VN062214.D  
 Acq: 30 Jun 2020 2:59

Tgt Ion: 129 Resp: 851  
 Ion Ratio Lower Upper  
 129 100  
 127 77.7 39.5 118.5

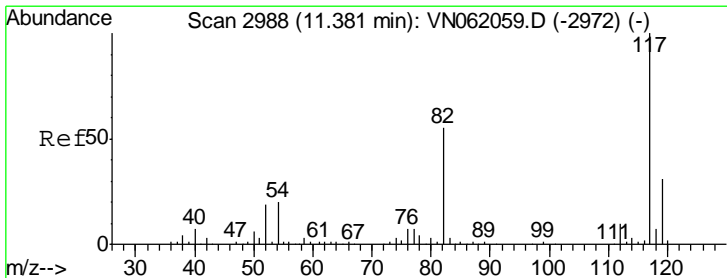
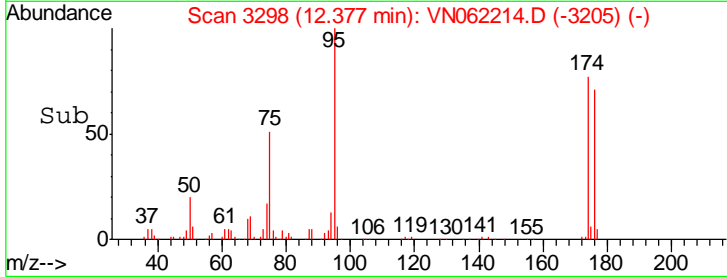
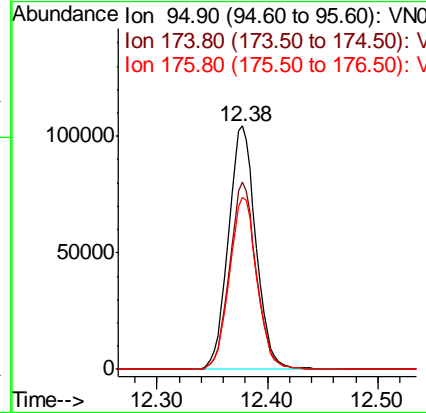
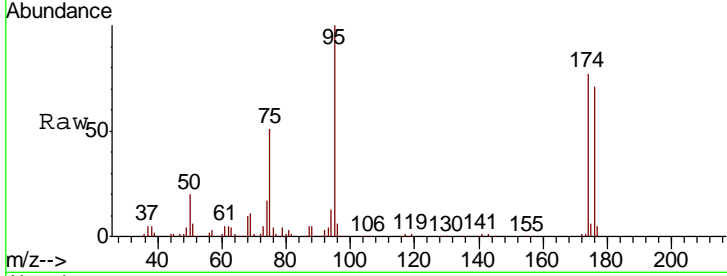




#62  
 4-Bromofluorobenzene  
 Concen: 49.010 ug/l  
 RT: 12.38 min Scan# 3298  
 Delta R.T. -0.00 min  
 Lab File: VN062214.D  
 Acq: 30 Jun 2020 2:59

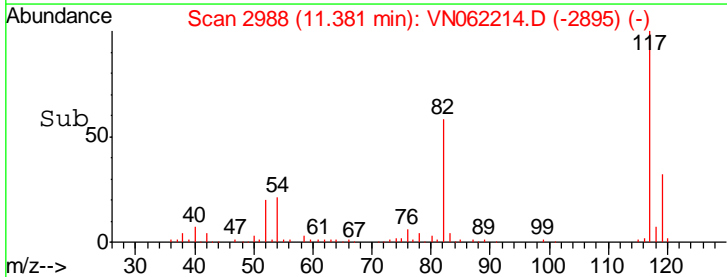
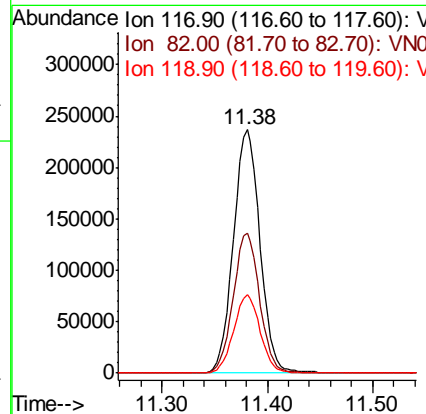
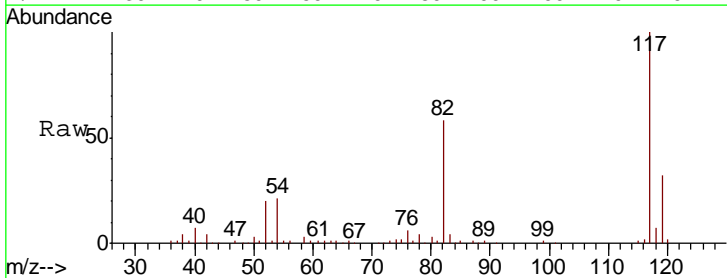
Instrument : MSVOA\_N  
 Client Sampled : BP-MW180-SOIL-572-574

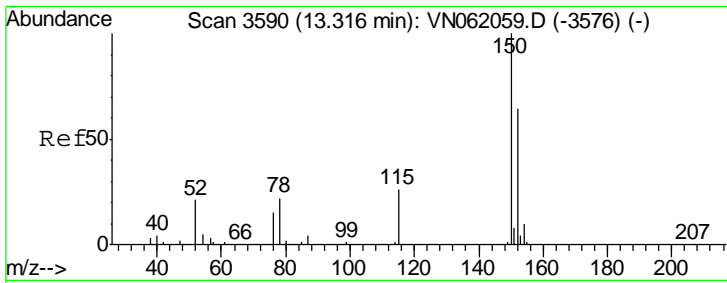
Tgt Ion	Resp	Lower	Upper
95	180445		
174	74.8	0.0	154.8
176	70.7	0.0	147.4



#63  
 Chlorobenzene-d5  
 Concen: 50.000 ug/l  
 RT: 11.38 min Scan# 2988  
 Delta R.T. -0.00 min  
 Lab File: VN062214.D  
 Acq: 30 Jun 2020 2:59

Tgt Ion	Resp	Lower	Upper
117	412356		
82	57.6	43.8	65.8
119	32.0	25.2	37.8

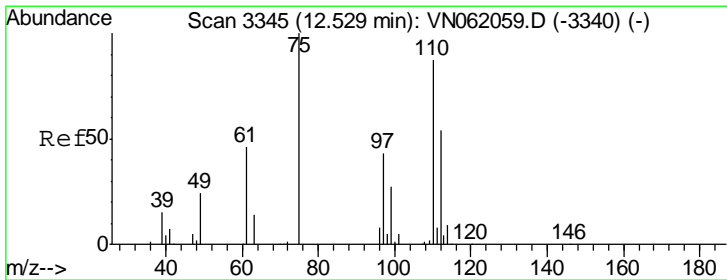
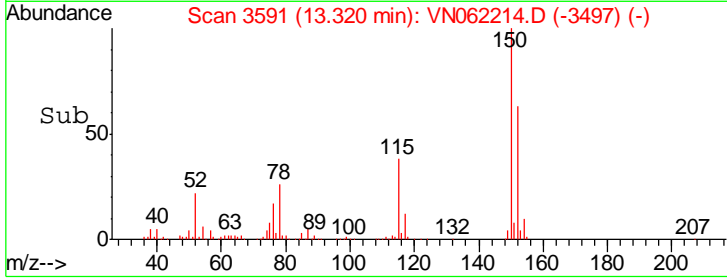
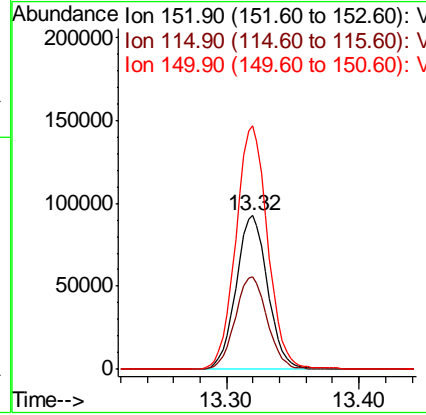
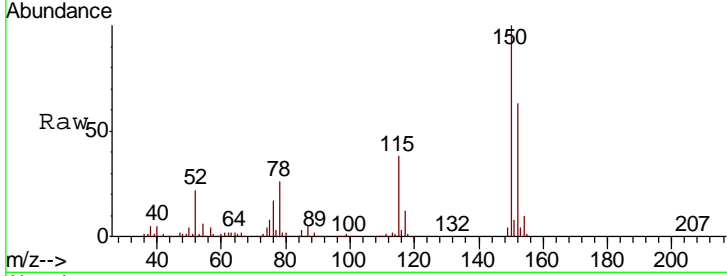




#72  
 1,4-Dichlorobenzene-d4  
 Concen: 50.000 ug/l  
 RT: 13.32 min Scan# 3591  
 Delta R.T. 0.00 min  
 Lab File: VN062214.D  
 Acq: 30 Jun 2020 2:59

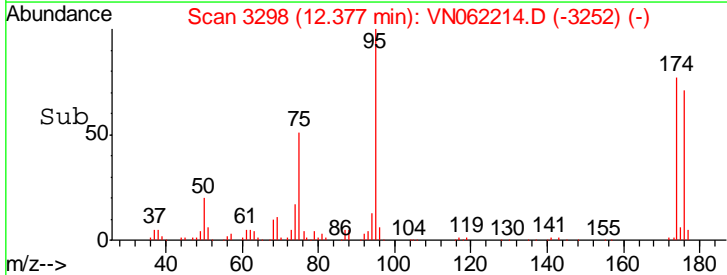
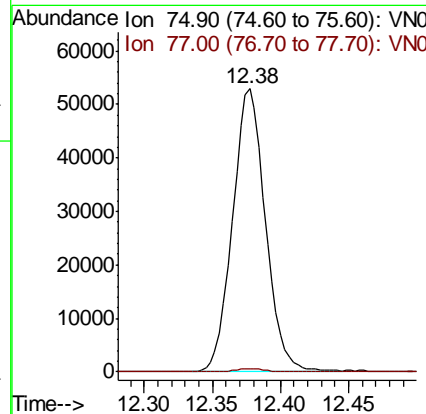
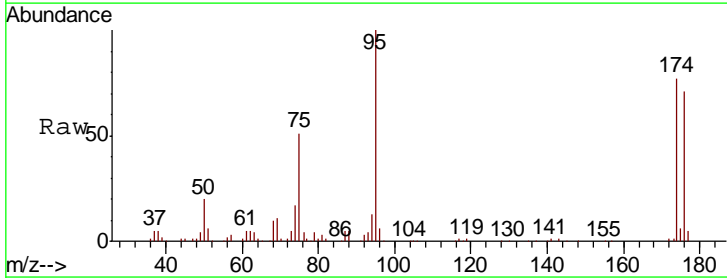
Instrument : MSVOA\_N  
 ClientSampled : BP-MW180-SOIL-572-574

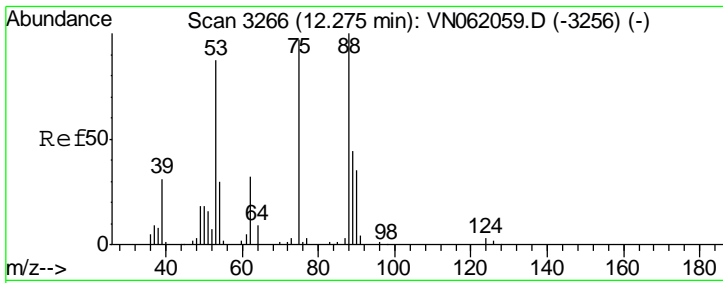
Tgt Ion	Resp	Lower	Upper
152	100		
115	61.4	29.5	88.5
150	159.6	0.0	351.4



#76  
 1,2,3-Trichloropropane  
 Concen: 24.540 ug/l  
 RT: 12.38 min Scan# 3298  
 Delta R.T. -0.15 min  
 Lab File: VN062214.D  
 Acq: 30 Jun 2020 2:59

Tgt Ion	Resp	Lower	Upper
75	100		
77	1.0	0.0	0.0#

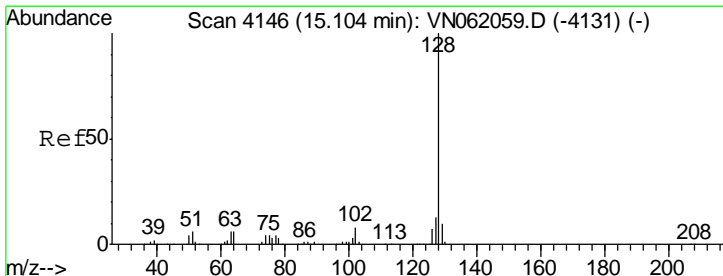
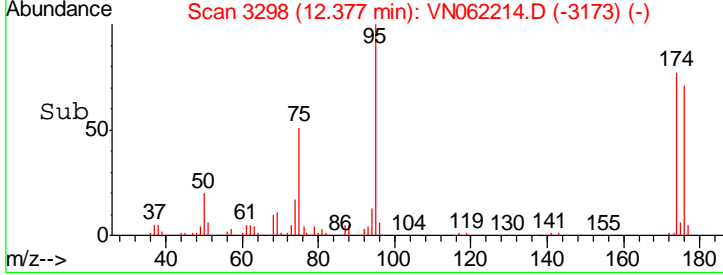
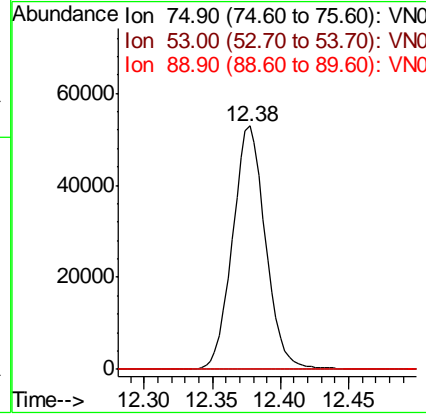
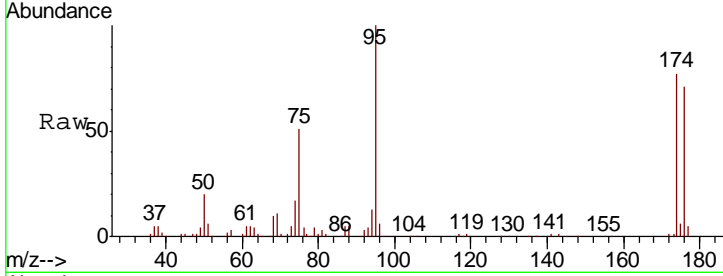




#81  
 trans-1,4-Dichloro-2-butene  
 Concen: 71.667 ug/l  
 RT: 12.38 min Scan# 3298  
 Delta R.T. 0.10 min  
 Lab File: VN062214.D  
 Acq: 30 Jun 2020 2:59

Instrument : MSVOA\_N  
 ClientSampled : BP-MW180-SOIL-572-574

Tgt Ion	Resp	Lower	Upper
75	100		
53	0.0	72.0	108.0#
89	0.0	36.9	55.3#



#95  
 Naphthalene  
 Concen: 4.041 ug/l  
 RT: 15.11 min Scan# 4149  
 Delta R.T. 0.01 min  
 Lab File: VN062214.D  
 Acq: 30 Jun 2020 2:59

Tgt Ion	Resp	Lower	Upper
128	100		
127	0.0	10.5	15.7#
129	0.0	8.6	13.0#

