

Data Path : Z:\VOASRV\HPCHEM1\MSVOA N\DATA\VN070218\  
 Data File : VN049668.D  
 Acq On : 2 Jul 2018 14:44  
 Operator : MD\SY  
 Sample : J3811-04  
 Misc : 5.00mL/MSVOA N/WATER  
 ALS Vial : 9 Sample Multiplier: 1

Instrument :  
 MSVOA\_N  
 ClientSampleId :  
 MW-3

Integration Parameters: RTEINT.P  
 Integrator: RTE  
 Smoothing : ON Filtering: 5  
 Sampling : 1 Min Area: 3 % of largest Peak  
 Start Thrs: 0.2 Max Peaks: 100  
 Stop Thrs : 0 Peak Location: TOP

If leading or trailing edge < 100 prefer < Baseline drop else tangent >  
 Peak separation: 5

Method : Z:\VOASRV\HPCHEM1\MSVOA\_N\METHODS\82N062918W.M  
 Title : SW846 8260

Signal : TIC

peak #	R.T. min	first scan	max scan	last scan	PK TY	peak height	corr. area	corr. % max.	% of total
1	1.654	3	20	169	rBV	18198399	144116018	100.00%	77.813%
2	7.593	1845	1867	1878	rBV	1065849	2717156	1.89%	1.467%
3	7.667	1879	1890	1934	rVB	1623309	3989396	2.77%	2.154%
4	8.030	1982	2003	2027	rBV	1125555	2729032	1.89%	1.473%
5	8.587	2160	2176	2215	rBV	2352855	5146757	3.57%	2.779%
6	10.095	2629	2645	2688	rBV	4055555	8042323	5.58%	4.342%
7	11.410	3038	3054	3079	rBV	3025706	5585462	3.88%	3.016%
8	12.406	3349	3364	3381	rBV	2682266	4609019	3.20%	2.489%
9	13.043	3550	3562	3582	rVB	1342318	2160709	1.50%	1.167%
10	13.348	3645	3657	3679	rVB2	2924792	6112460	4.24%	3.300%

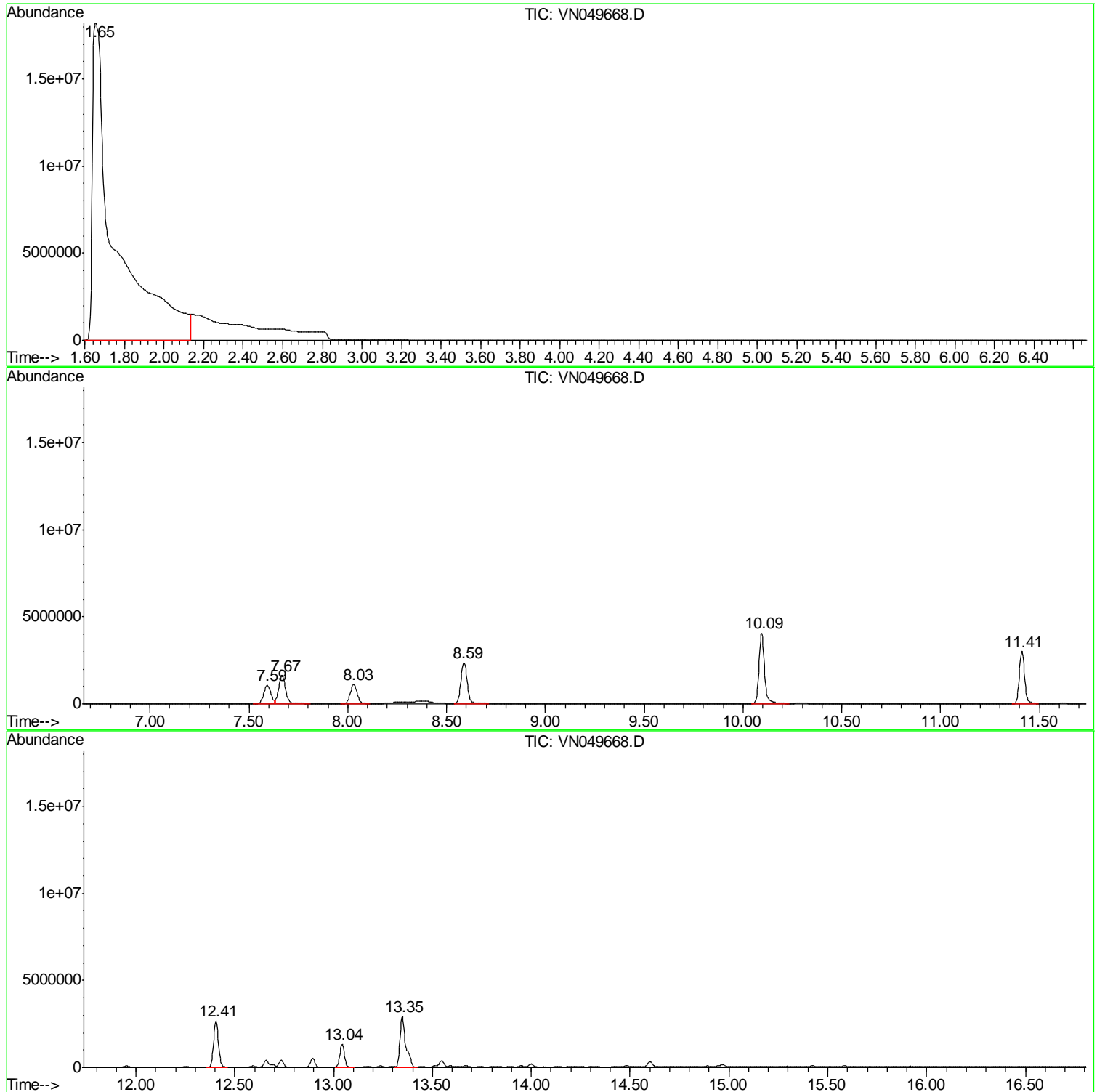
Sum of corrected areas: 185208332

Data Path : Z:\VOASRV\HPCHEM1\MSVOA N\DATA\VN070218\  
Data File : VN049668.D  
Acq On : 2 Jul 2018 14:44  
Operator : MD\SY  
Sample : J3811-04  
Misc : 5.00mL/MSVOA N/WATER  
ALS Vial : 9 Sample Multiplier: 1

Instrument :  
MSVOA\_N  
ClientSampled :  
MW-3

Quant Method : Z:\VOASRV\HPCHEM1\MSVOA\_N\METHODS\82N062918W.M  
Quant Title : SW846 8260

TIC Library : C:\DATABASE\NIST11.L  
TIC Integration Parameters: LSCINT.P



Data Path : Z:\VOASRV\HPCHEM1\MSVOA N\DATA\VN070218\  
 Data File : VN049668.D  
 Acq On : 2 Jul 2018 14:44  
 Operator : MD\SY  
 Sample : J3811-04  
 Misc : 5.00mL/MSVOA N/WATER  
 ALS Vial : 9 Sample Multiplier: 1

Instrument :  
 MSVOA\_N  
 ClientSampled :  
 MW-3

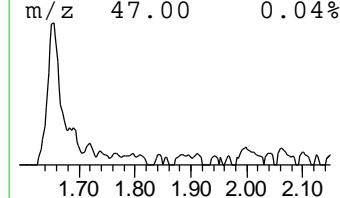
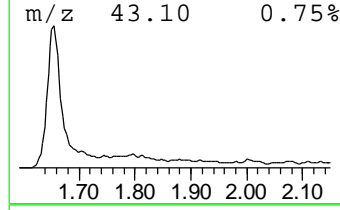
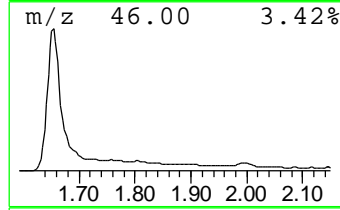
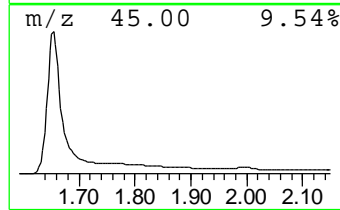
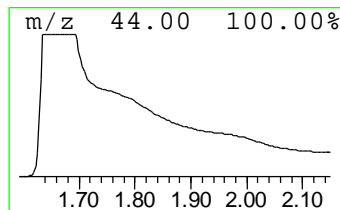
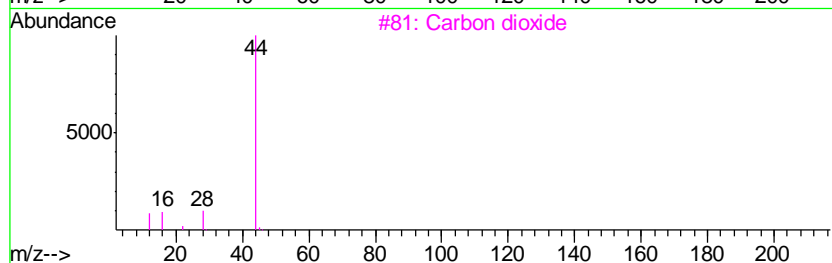
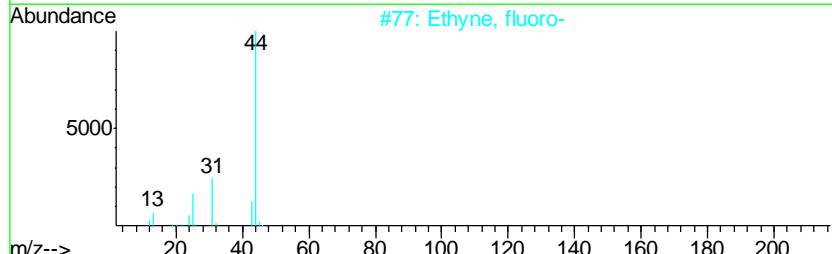
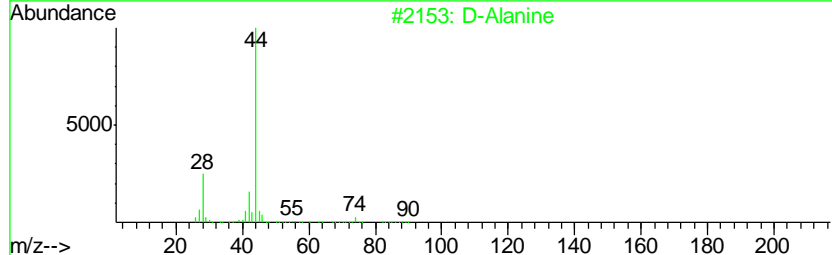
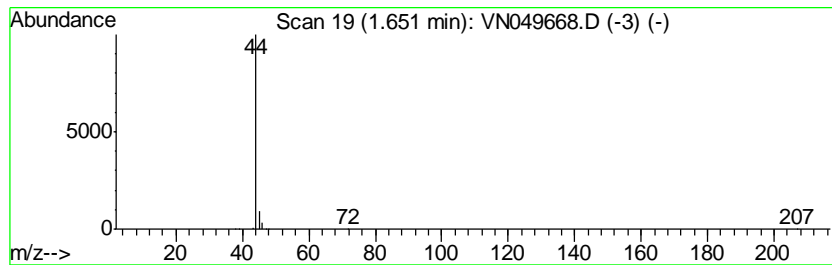
Quant Method : Z:\VOASRV\HPCHEM1\MSVOA\_N\METHODS\82N062918W.M  
 Quant Title : SW846 8260

TIC Library : C:\DATABASE\NIST11.L  
 TIC Integration Parameters: LSCINT.P

\*\*\*\*\*  
 Peak Number 1 unknown1.65 Concentration Rank 1

R.T.	EstConc	Area	Relative to ISTD	R.T.
1.65	1806.24 ug/l	144116000	Pentafluorobenzene	7.67

Hit#	of	Tentative ID	MW	MolForm	CAS#	Qual
1	5	D-Alanine	89	C3H7NO2	000338-69-2	2
2		Ethyne, fluoro-	44	C2HF	002713-09-9	2
3		Carbon dioxide	44	CO2	000124-38-9	2
4		Acetaldehyde	44	C2H4O	000075-07-0	2
5		Nitrous oxide	44	N2O	010024-97-2	2



Data Path : Z:\VOASRV\HPCHEM1\MSVOA\_N\DATA\VN070218\  
Data File : VN049668.D  
Acq On : 2 Jul 2018 14:44  
Operator : MD\SY  
Sample : J3811-04  
Misc : 5.00mL/MSVOA\_N/WATER  
ALS Vial : 9 Sample Multiplier: 1

Instrument :  
MSVOA\_N  
ClientSampleId :  
MW-3

Quant Method : Z:\VOASRV\HPCHEM1\MSVOA\_N\METHODS\82N062918W.M  
Quant Title : SW846 8260

TIC Library : C:\DATABASE\NIST11.L  
TIC Integration Parameters: LSCINT.P

TIC Top Hit name	RT	EstConc	Units	Response	--Internal Standard--			
					#	RT	Resp	Conc
unknown1.65	1.65	1806.2	ug/l	144116000	1	7.67	3989400	50.0