

Data Path : Z:\VOASRV\HPCHEM1\MSVOA N\DATA\VN070419\
 Data File : VN056597.D
 Acq On : 3 Jul 2019 20:11
 Operator : JC/SP
 Sample : K3680-04
 Misc : 5.00mL/MSVOA N/WATER
 ALS Vial : 11 Sample Multiplier: 1

Instrument :
 MSVOA_N
 ClientSampled :
 MW-5

Quant Time: Jul 03 22:52:13 2019
 Quant Method : Z:\VOASRV\HPCHEM1\MSVOA_N\METHODS\82N061919W.M
 Quant Title : SW846 8260
 QLast Update : Fri Jun 21 03:45:40 2019
 Response via : Initial Calibration

Internal Standards	R.T.	QIon	Response	Conc	Units	Dev(Min)
1) Pentafluorobenzene	7.67	168	271388	50.00	ug/l	0.00
34) 1,4-Difluorobenzene	8.59	114	471101	50.00	ug/l	0.00
63) Chlorobenzene-d5	11.41	117	471802	50.00	ug/l	0.00
72) 1,4-Dichlorobenzene-d4	13.34	152	182027	50.00	ug/l	0.00

System Monitoring Compounds

33) 1,2-Dichloroethane-d4	8.03	65	157735	52.44	ug/l	0.00
Spiked Amount	50.000		Recovery	=	104.88%	
35) Dibromofluoromethane	7.59	113	138476	47.12	ug/l	0.00
Spiked Amount	50.000		Recovery	=	94.24%	
50) Toluene-d8	10.09	98	587319	51.36	ug/l	0.00
Spiked Amount	50.000		Recovery	=	102.72%	
62) 4-Bromofluorobenzene	12.40	95	209009	54.83	ug/l	0.00
Spiked Amount	50.000		Recovery	=	109.66%	

Target Compounds

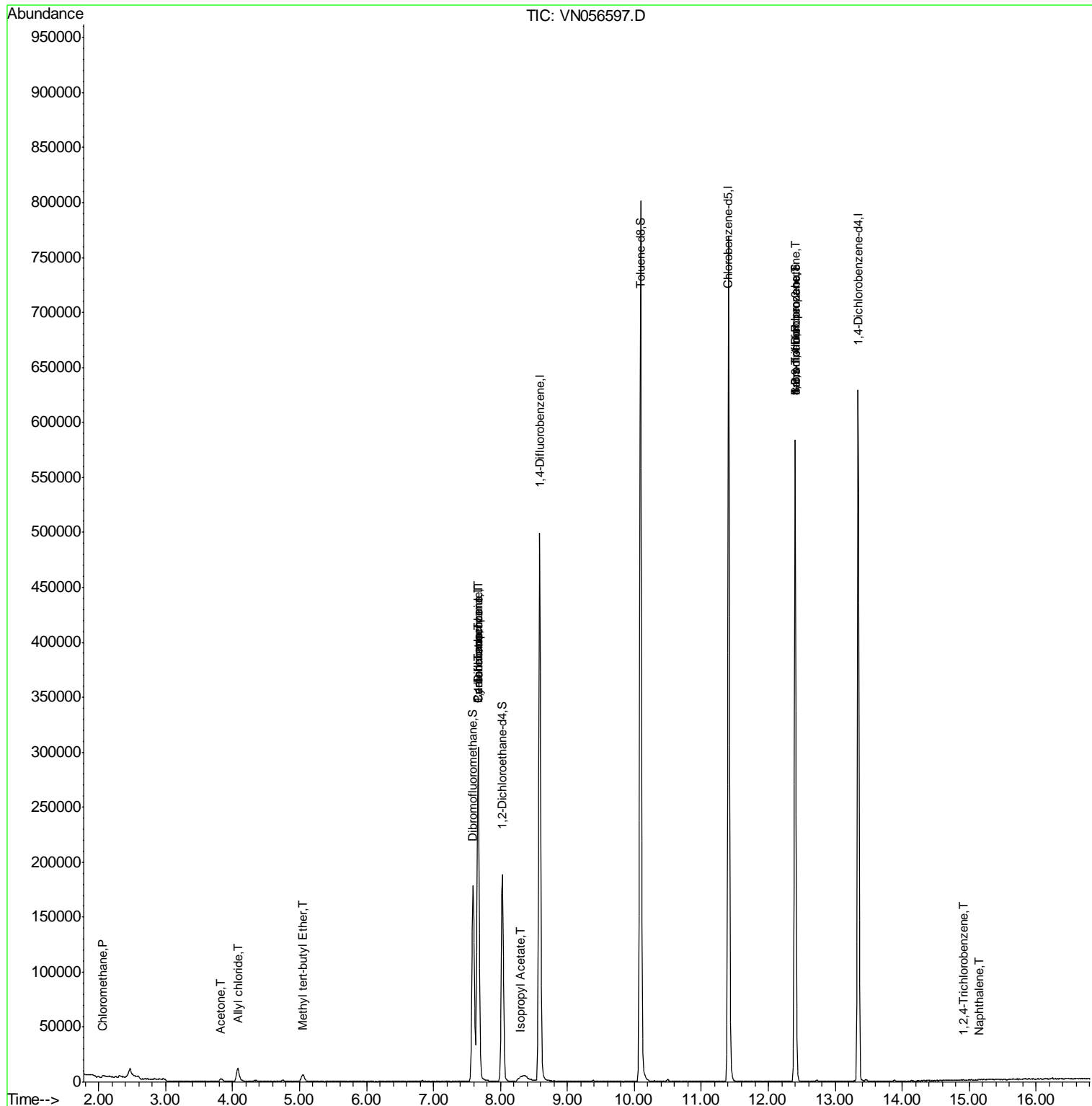
					Qvalue
3) Chloromethane	2.06	50	925	0.296 ug/l	89
14) Allyl chloride	4.08	41	1723	0.432 ug/l #	56
16) Acetone	3.83	43	4526	3.003 ug/l	96
18) Methyl Acetate	4.34	43	1595	Below Cal #	71
19) Methyl tert-butyl Ether	5.05	73	6099	0.769 ug/l	97
20) Methylene Chloride	4.55	84	122	Below Cal #	56
31) Cyclohexane	7.66	56	4214	0.907 ug/l #	1
36) 1,1-Dichloropropene	7.67	75	18247	4.401 ug/l #	48
38) Carbon Tetrachloride	7.67	117	23519	6.486 ug/l #	15
43) Isopropyl Acetate	8.30	43	4136	0.658 ug/l #	54
71) Bromoform	12.41	173	1368	3.639 ug/l #	1
73) Isopropylbenzene	12.40	105	100	Below Cal #	48
76) 1,2,3-Trichloropropane	12.40	75	98288	26.041 ug/l #	100
79) 2-Chlorotoluene	12.60	91	212	Below Cal #	40
81) trans-1,4-Dichloro-2-buten	12.40	75	98288	92.553 ug/l #	8
93) 1,2,4-Trichlorobenzene	14.90	180	30	5.622 ug/l #	13
95) Naphthalene	15.14	128	588	5.308 ug/l #	70

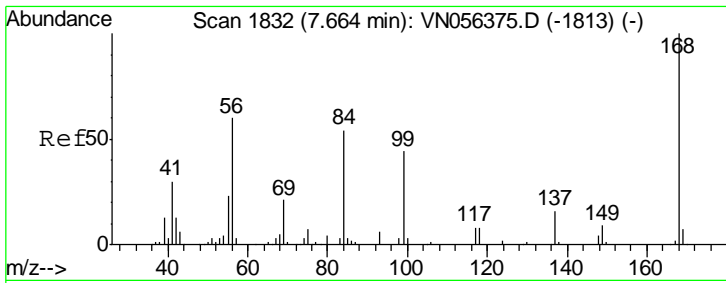
(#) = qualifier out of range (m) = manual integration (+) = signals summed

Data Path : Z:\VOASRV\HPCHEM1\MSVOA N\DATA\VN070419\
 Data File : VN056597.D
 Acq On : 3 Jul 2019 20:11
 Operator : JC/SP
 Sample : K3680-04
 Misc : 5.00mL/MSVOA N/WATER
 ALS Vial : 11 Sample Multiplier: 1

Instrument :
 MSVOA_N
 ClientSampleId :
 MW-5

Quant Time: Jul 03 22:52:13 2019
 Quant Method : Z:\VOASRV\HPCHEM1\MSVOA_N\METHODS\82N061919W.M
 Quant Title : SW846 8260
 QLast Update : Fri Jun 21 03:45:40 2019
 Response via : Initial Calibration

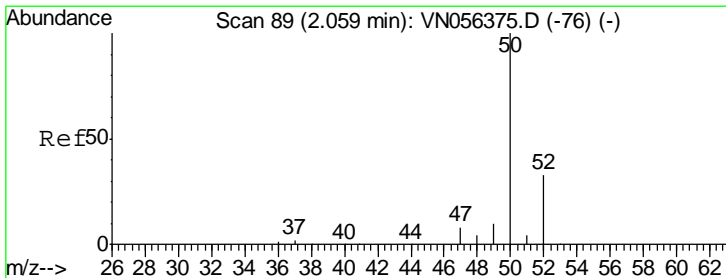
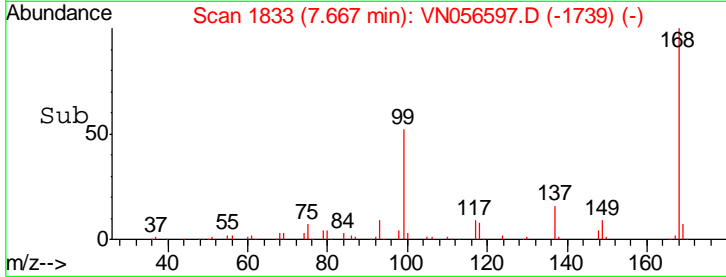
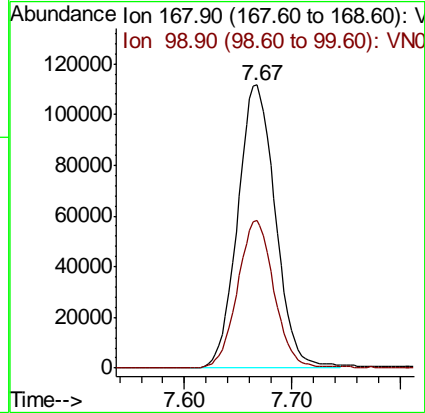
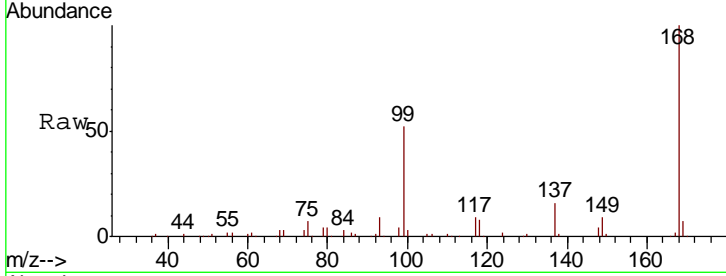




#1
 Pentafluorobenzene
 Concen: 50.000 ug/l
 RT: 7.67 min Scan# 1833
 Delta R.T. 0.00 min
 Lab File: VN056597.D
 Acq: 3 Jul 2019 20:11

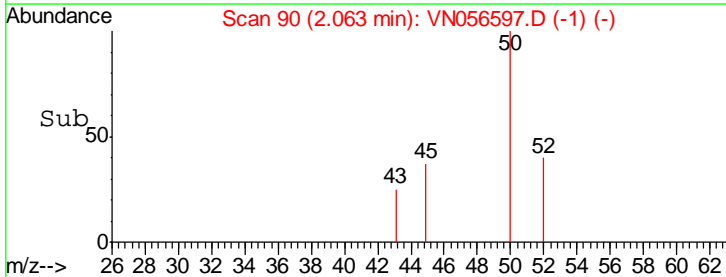
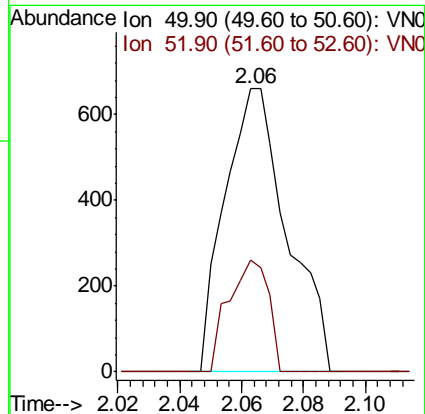
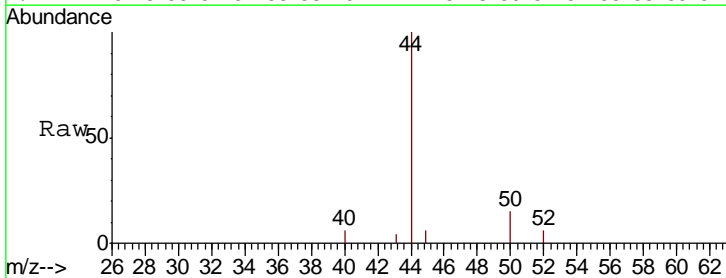
Instrument :
 MSVOA_N
 ClientSampled :
 MW-5

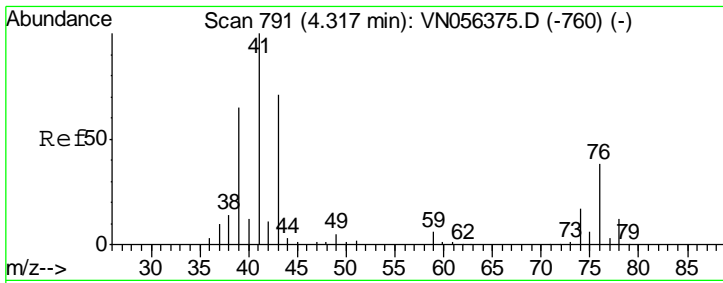
Tot Ion:168 Resp: 271388
 Ion Ratio Lower Upper
 168 100
 99 52.4 40.6 61.0



#3
 Chloromethane
 Concen: 0.296 ug/l
 RT: 2.06 min Scan# 90
 Delta R.T. 0.00 min
 Lab File: VN056597.D
 Acq: 3 Jul 2019 20:11

Tgt Ion: 50 Resp: 925
 Ion Ratio Lower Upper
 50 100
 52 39.5 26.5 39.7

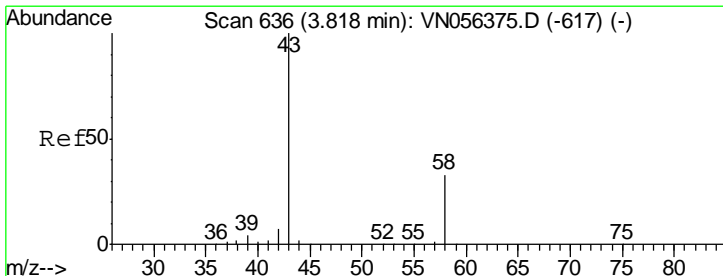
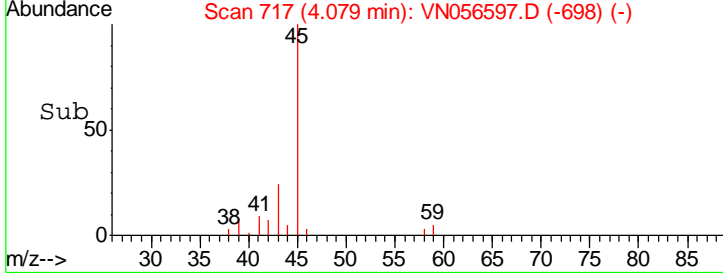
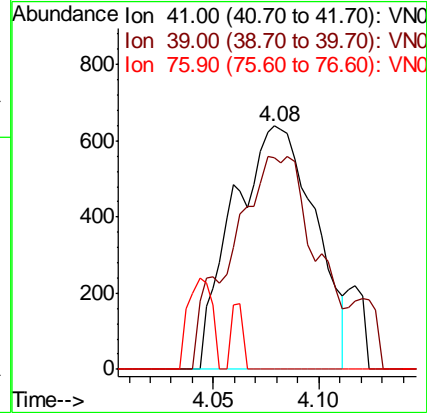
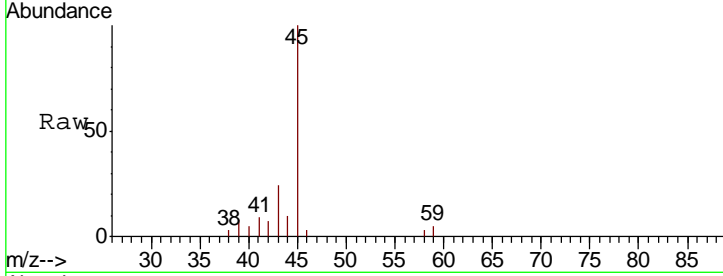




#14
 Allvl chloride
 Concen: 0.432 ug/l
 RT: 4.08 min Scan# 717
 Delta R.T. -0.24 min
 Lab File: VN056597.D
 Acq: 3 Jul 2019 20:11

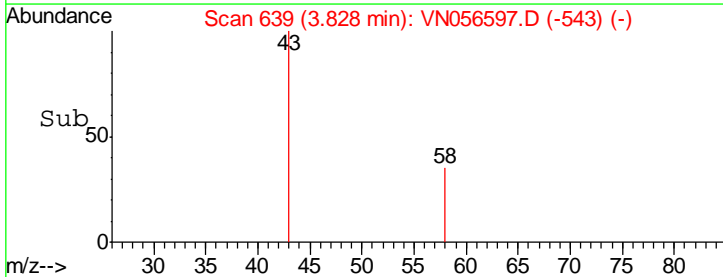
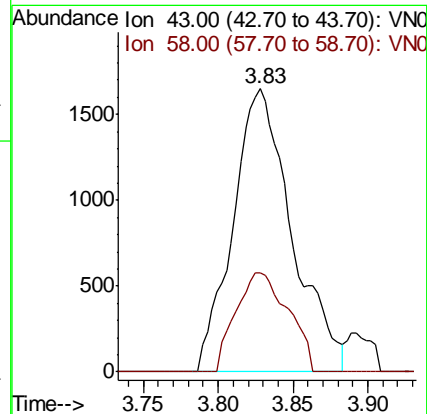
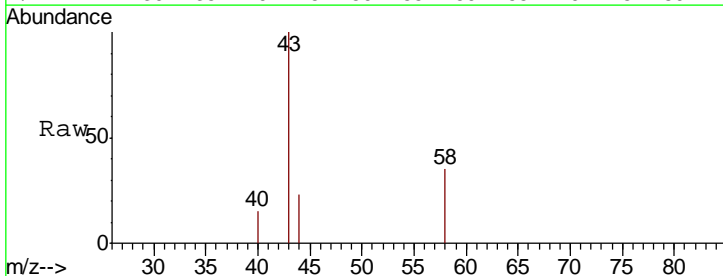
Instrument :
 MSVOA_N
 ClientSampled :
 MW-5

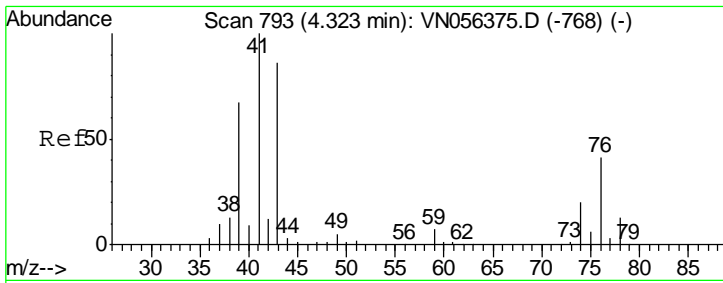
Tgt Ion	Resp	Lower	Upper
41	1723		
39	91.2	48.6	73.0#
76	3.8	26.6	40.0#



#16
 Acetone
 Concen: 3.003 ug/l
 RT: 3.83 min Scan# 639
 Delta R.T. 0.01 min
 Lab File: VN056597.D
 Acq: 3 Jul 2019 20:11

Tgt Ion	Resp	Lower	Upper
43	4526		
58	35.2	26.4	39.6

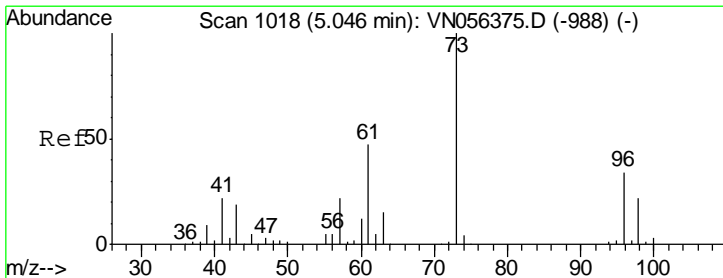
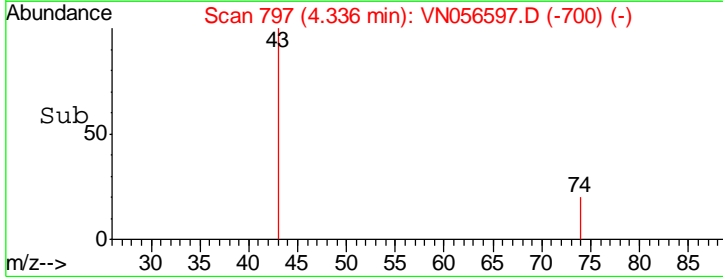
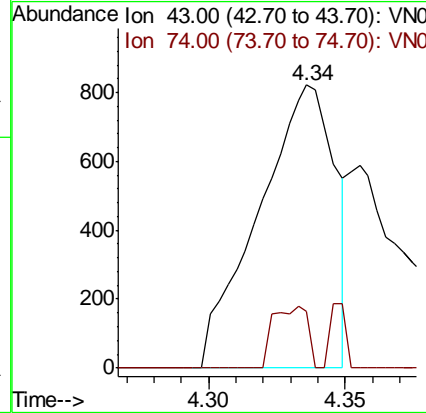
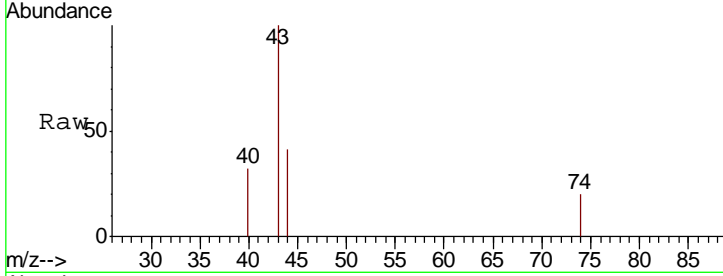




#18
 Methyl Acetate
 Concen: Below Cal
 RT: 4.34 min Scan# 797
 Delta R.T. 0.01 min
 Lab File: VN056597.D
 Acq: 3 Jul 2019 20:11

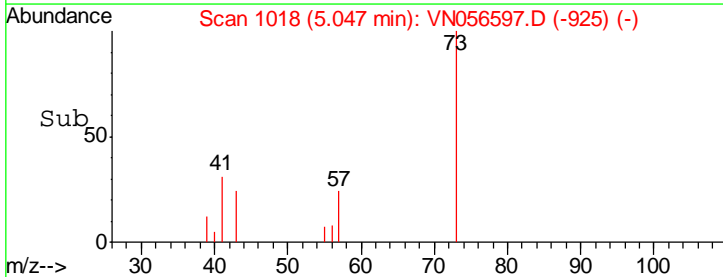
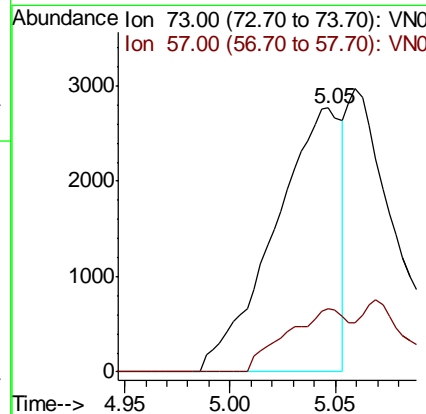
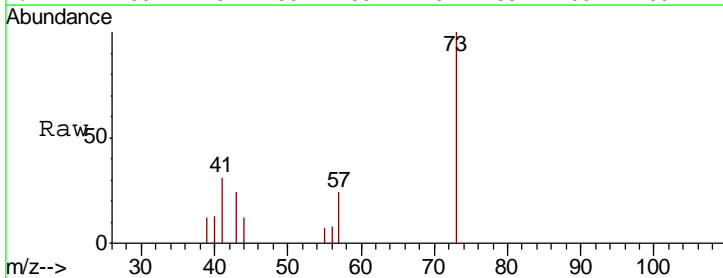
Instrument :
 MSVOA_N
 ClientSampled :
 MW-5

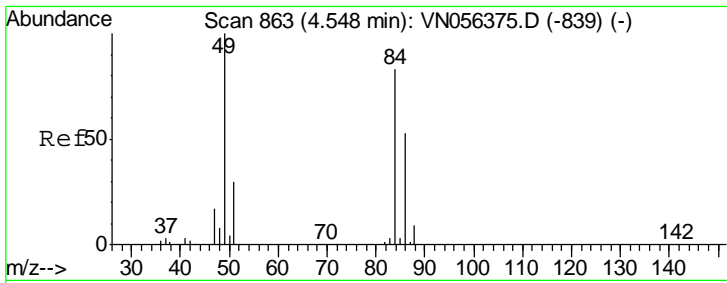
Tgt Ion: 43 Resp: 1595
 Ion Ratio Lower Upper
 43 100
 74 9.9 19.2 28.8#



#19
 Methyl tert-butyl Ether
 Concen: 0.769 ug/l
 RT: 5.05 min Scan# 1018
 Delta R.T. 0.00 min
 Lab File: VN056597.D
 Acq: 3 Jul 2019 20:11

Tgt Ion: 73 Resp: 6099
 Ion Ratio Lower Upper
 73 100
 57 23.9 17.9 26.9

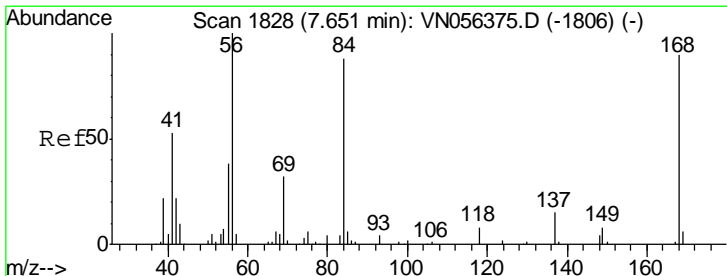
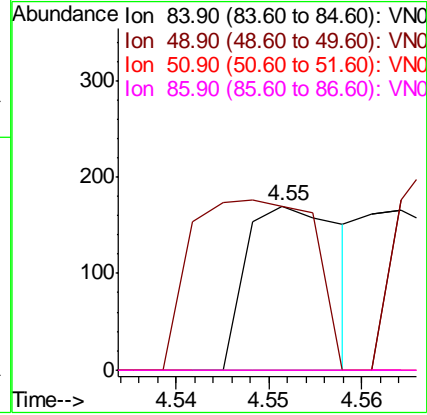
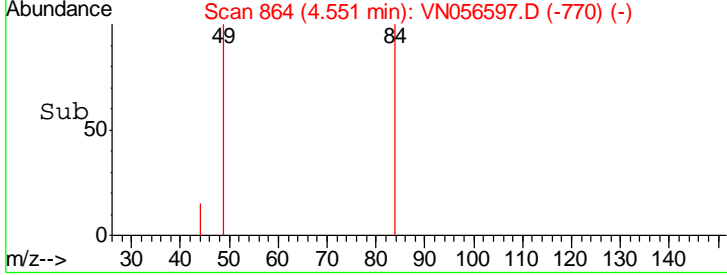
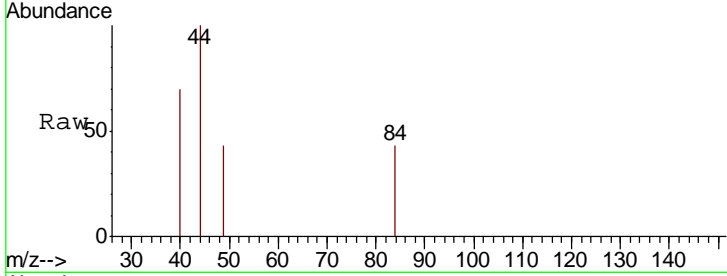




#20
 Methylene Chloride
 Concen: Below Cal
 RT: 4.55 min Scan# 864
 Delta R.T. 0.00 min
 Lab File: VN056597.D
 Acq: 3 Jul 2019 20:11

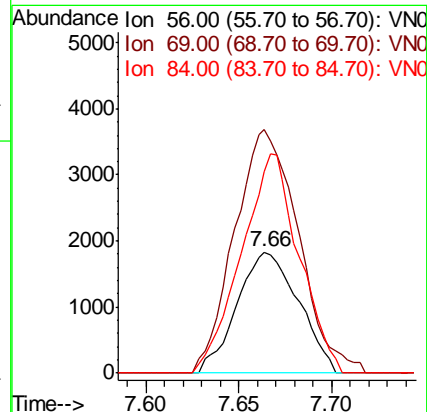
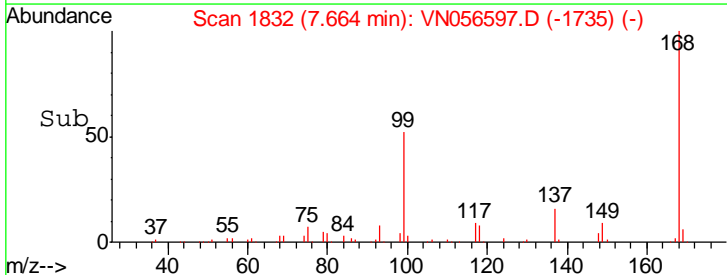
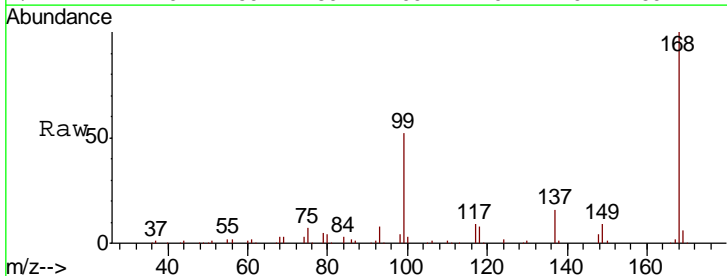
Instrument :
 MSVOA_N
 ClientSampled :
 MW-5

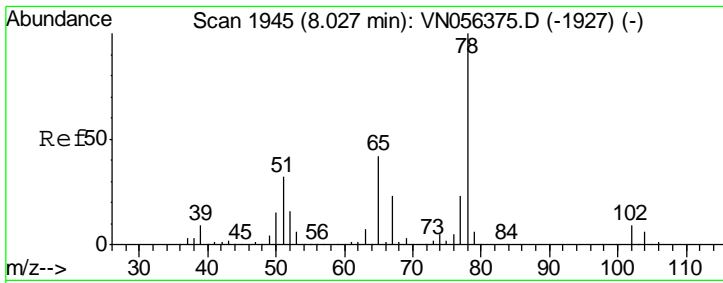
Tgt Ion	Resp	Lower	Upper
84	100		
49	100.0	96.4	144.6
51	0.0	28.6	43.0#
86	0.0	51.4	77.2#



#31
 Cyclohexane
 Concen: 0.907 ug/l
 RT: 7.66 min Scan# 1832
 Delta R.T. 0.01 min
 Lab File: VN056597.D
 Acq: 3 Jul 2019 20:11

Tgt Ion	Resp	Lower	Upper
56	100		
69	200.8	25.8	38.6#
84	166.1	69.4	104.0#

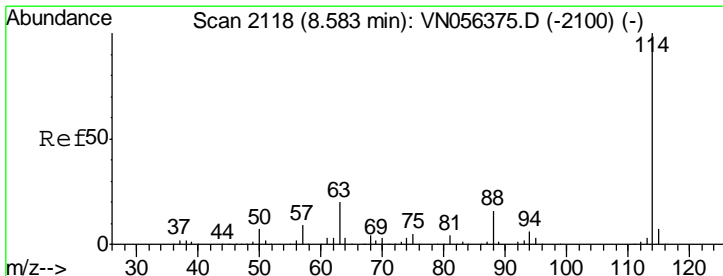
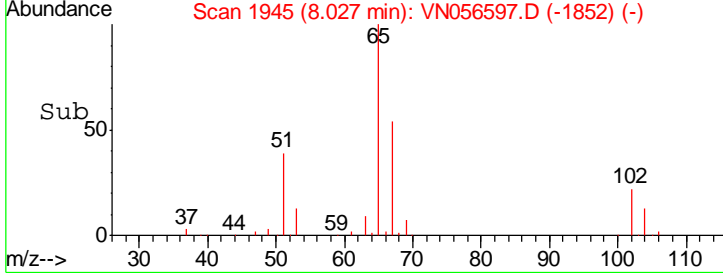
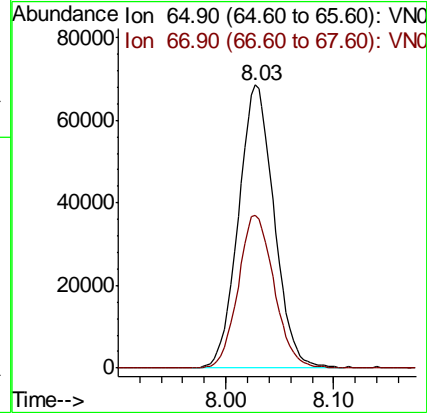
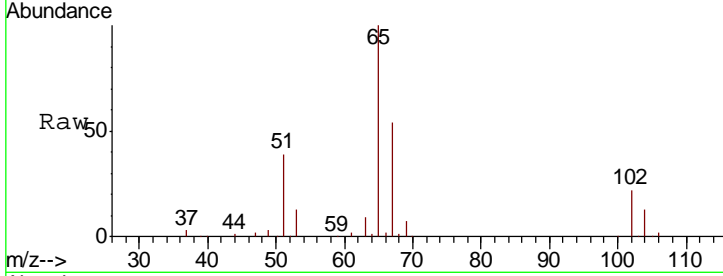




#33
 1,2-Dichloroethane-d4
 Concen: 52.442 ug/l
 RT: 8.03 min Scan# 1945
 Delta R.T. 0.00 min
 Lab File: VN056597.D
 Acq: 3 Jul 2019 20:11

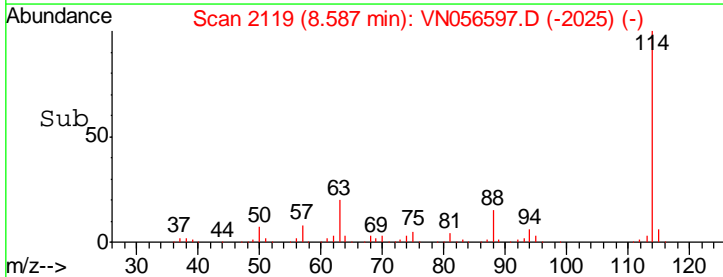
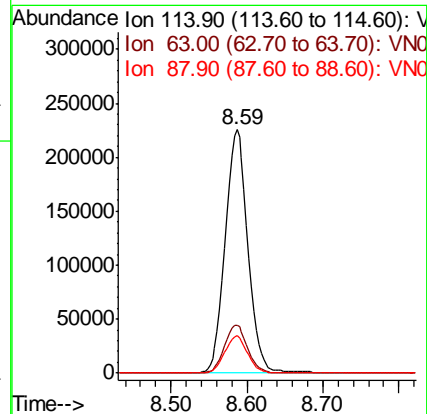
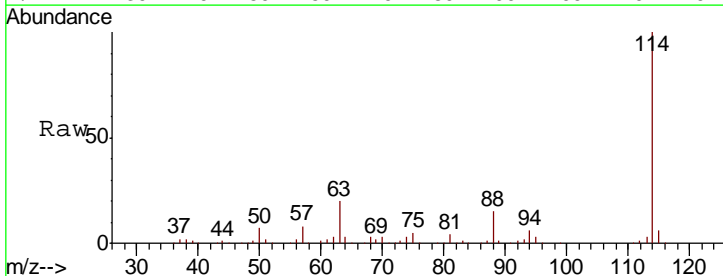
Instrument :
 MSVOA_N
 ClientSampled :
 MW-5

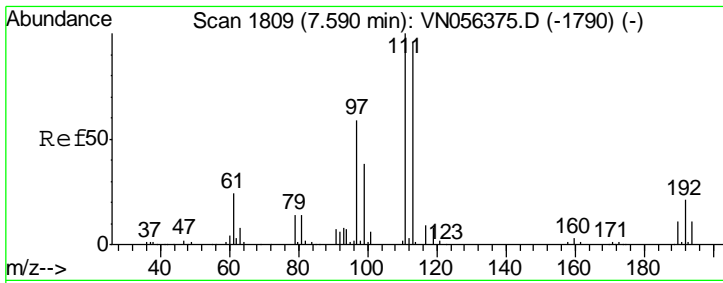
Tgt Ion: 65 Resp: 157735
 Ion Ratio Lower Upper
 65 100
 67 54.5 0.0 109.0



#34
 1,4-Difluorobenzene
 Concen: 50.000 ug/l
 RT: 8.59 min Scan# 2119
 Delta R.T. 0.00 min
 Lab File: VN056597.D
 Acq: 3 Jul 2019 20:11

Tgt Ion: 114 Resp: 471101
 Ion Ratio Lower Upper
 114 100
 63 19.8 0.0 39.2
 88 15.2 0.0 31.4

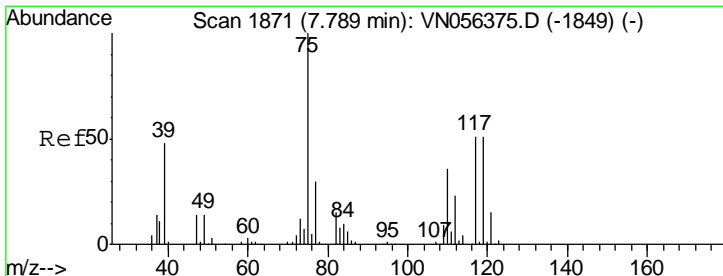
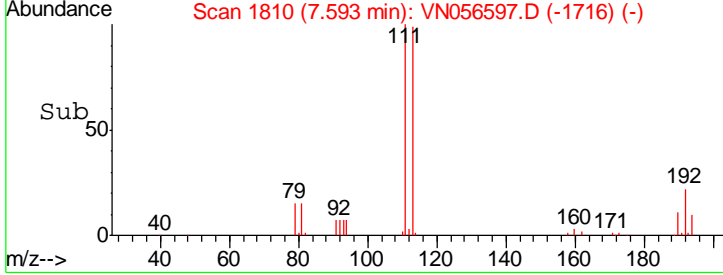
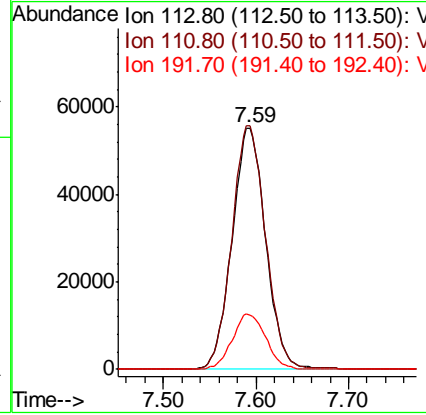
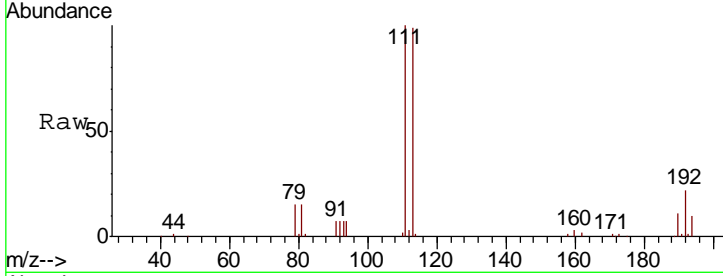




#35
 Dibromofluoromethane
 Concen: 47.118 ug/l
 RT: 7.59 min Scan# 1810
 Delta R.T. 0.00 min
 Lab File: VN056597.D
 Acq: 3 Jul 2019 20:11

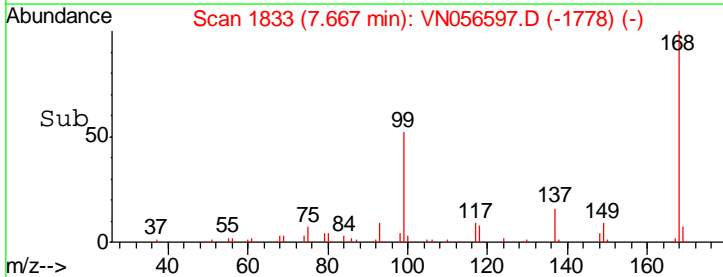
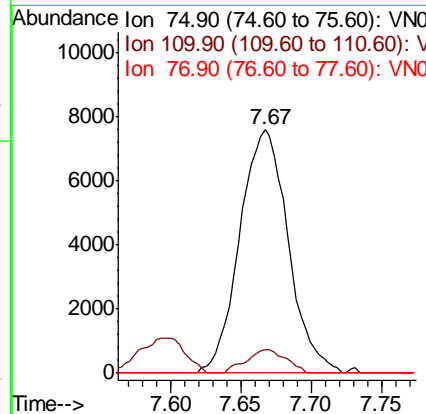
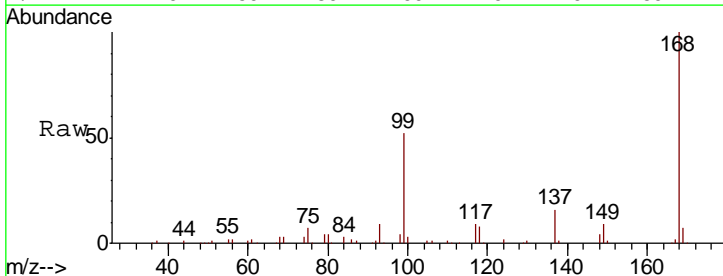
Instrument :
 MSVOA_N
 ClientSampled :
 MW-5

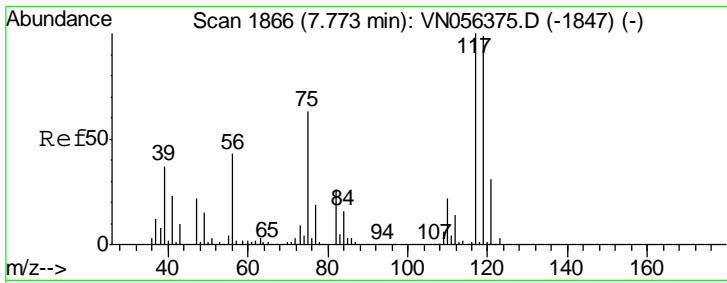
Tgt Ion	Resp	Lower	Upper
113	138476		
111	101.1	82.9	124.3
192	22.8	17.7	26.5



#36
 1,1-Dichloropropene
 Concen: 4.401 ug/l
 RT: 7.67 min Scan# 1833
 Delta R.T. -0.12 min
 Lab File: VN056597.D
 Acq: 3 Jul 2019 20:11

Tgt Ion	Resp	Lower	Upper
75	18247		
110	7.9	18.1	54.3#
77	0.0	24.6	36.8#

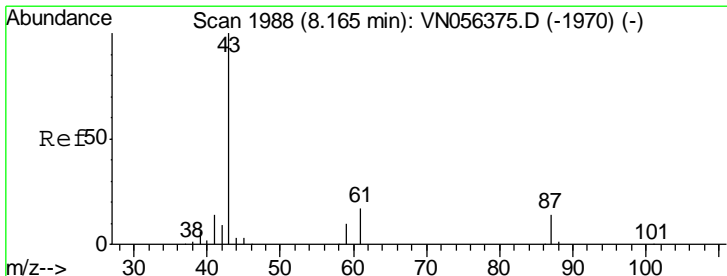
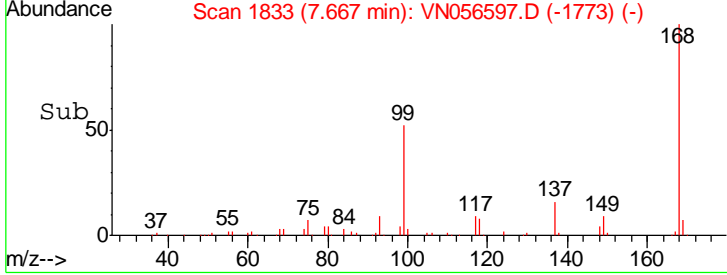
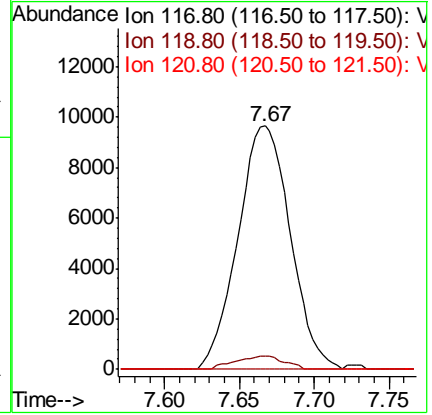
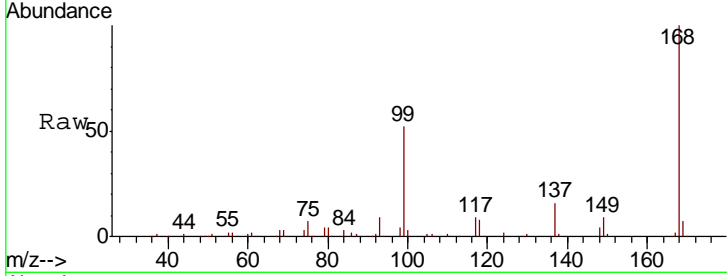




#38
 Carbon Tetrachloride
 Concen: 6.486 ug/l
 RT: 7.67 min Scan# 1833
 Delta R.T. -0.11 min
 Lab File: VN056597.D
 Acq: 3 Jul 2019 20:11

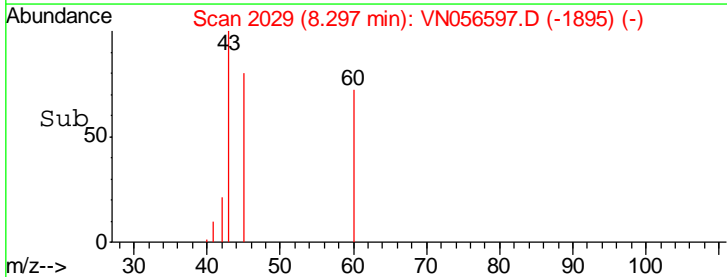
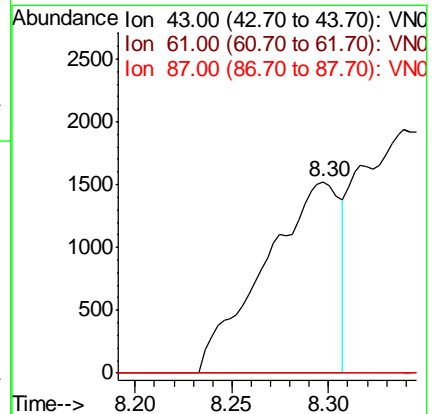
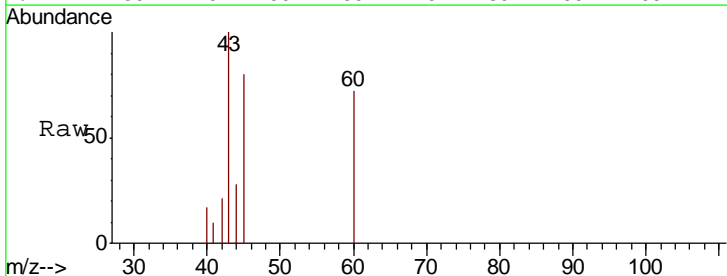
Instrument :
 MSVOA_N
 ClientSampled :
 MW-5

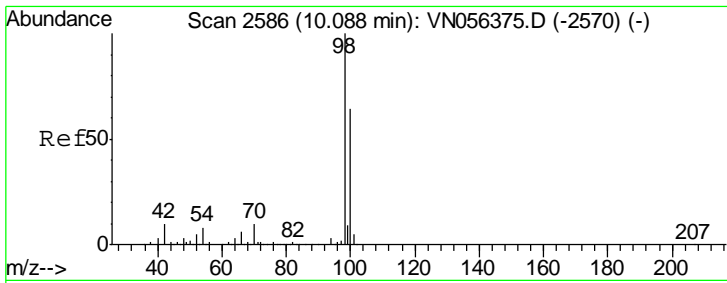
Tgt Ion	Resp	Lower	Upper
117	100		
119	5.5	79.1	118.7#
121	0.0	24.8	37.2#



#43
 Isopropyl Acetate
 Concen: 0.658 ug/l
 RT: 8.30 min Scan# 2029
 Delta R.T. 0.13 min
 Lab File: VN056597.D
 Acq: 3 Jul 2019 20:11

Tgt Ion	Resp	Lower	Upper
43	100		
61	0.0	22.0	33.0#
87	0.0	11.0	16.4#

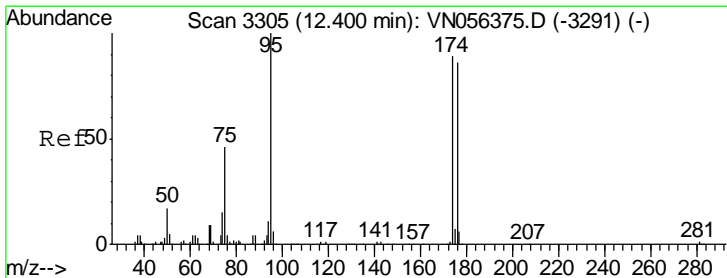
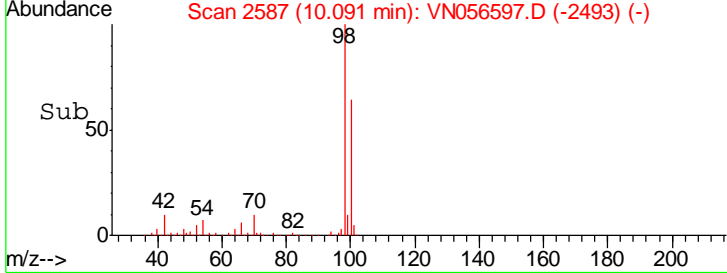
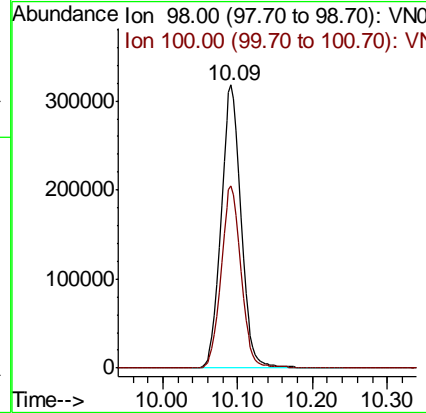
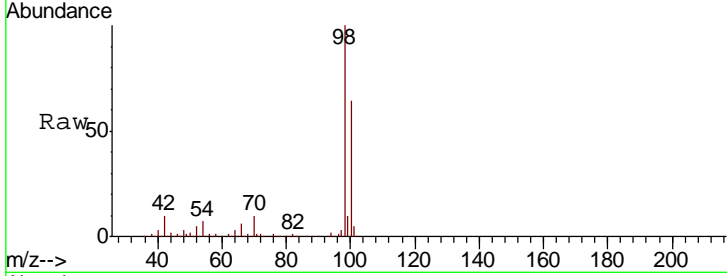




#50
 Toluene-d8
 Concen: 51.359 ug/l
 RT: 10.09 min Scan# 2587
 Delta R.T. 0.00 min
 Lab File: VN056597.D
 Acq: 3 Jul 2019 20:11

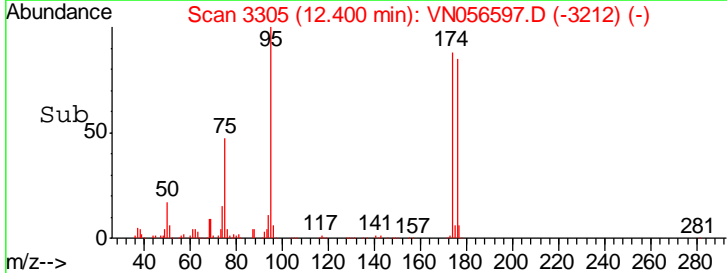
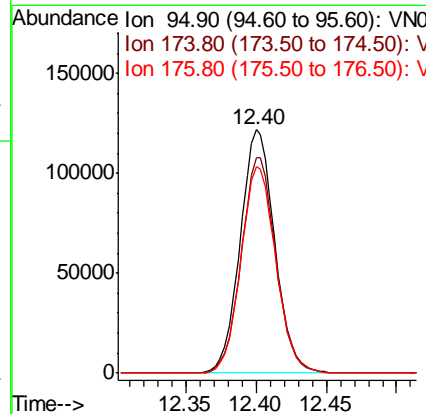
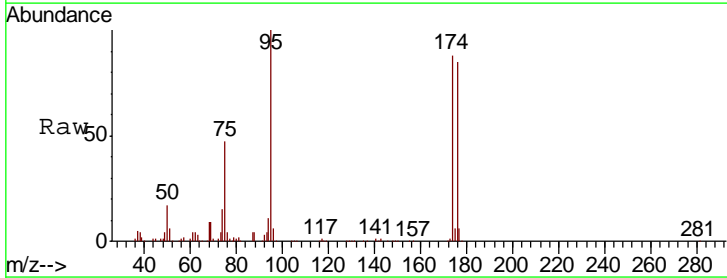
Instrument :
 MSVOA_N
 ClientSampled :
 MW-5

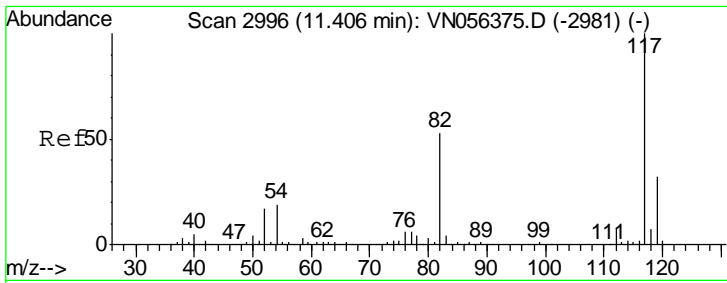
Tgt Ion: 98 Resp: 587319
 Ion Ratio Lower Upper
 98 100
 100 64.4 52.2 78.2



#62
 4-Bromofluorobenzene
 Concen: 54.828 ug/l
 RT: 12.40 min Scan# 3305
 Delta R.T. 0.00 min
 Lab File: VN056597.D
 Acq: 3 Jul 2019 20:11

Tgt Ion: 95 Resp: 209009
 Ion Ratio Lower Upper
 95 100
 174 88.6 0.0 179.4
 176 85.8 0.0 173.4

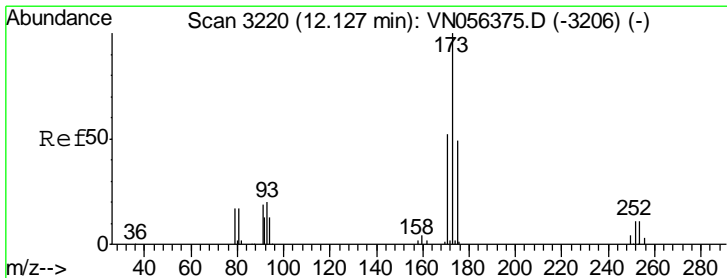
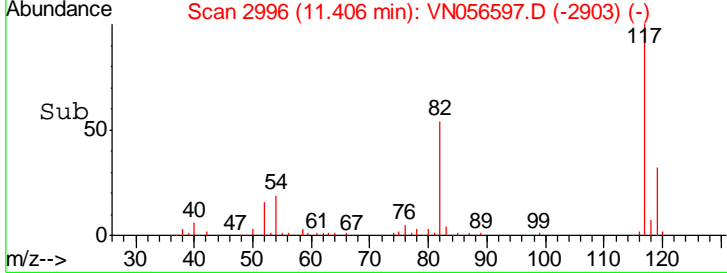
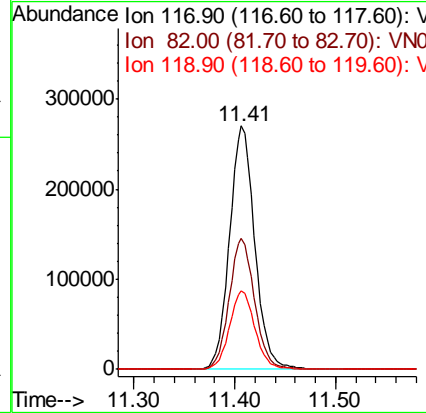
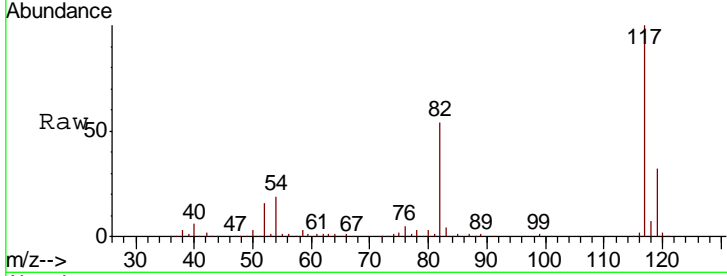




#63
 Chlorobenzene-d5
 Concen: 50.000 ug/l
 RT: 11.41 min Scan# 2996
 Delta R.T. 0.00 min
 Lab File: VN056597.D
 Acq: 3 Jul 2019 20:11

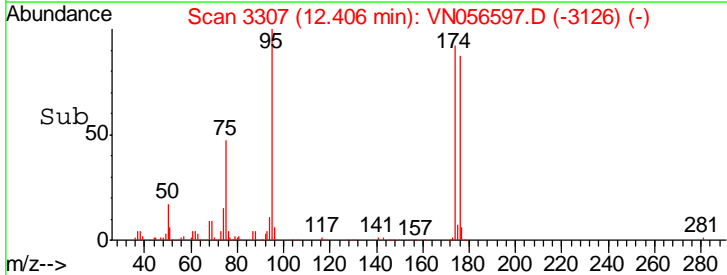
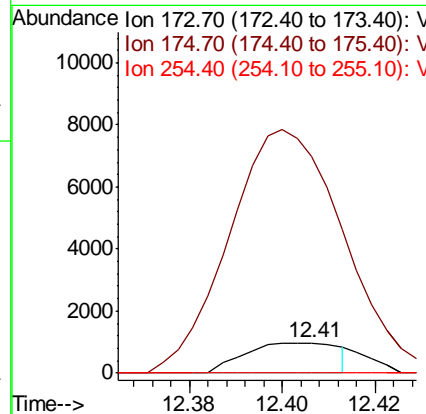
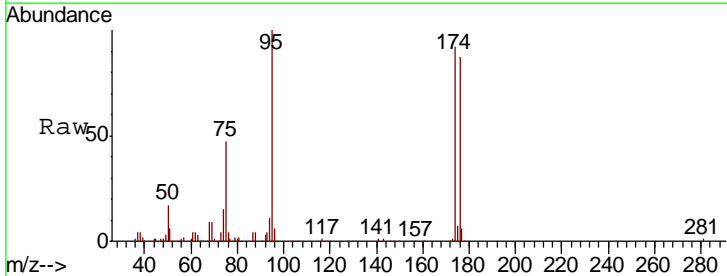
Instrument :
 MSVOA_N
 ClientSampled :
 MW-5

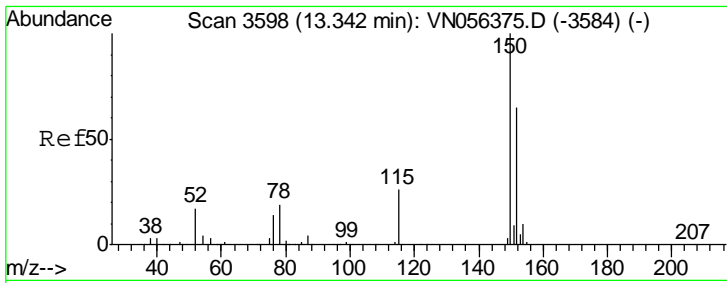
Tgt Ion	Resp	Lower	Upper
117	471802		
82	53.8	42.0	63.0
119	32.0	25.3	37.9



#71
 Bromoform
 Concen: 3.639 ug/l
 RT: 12.41 min Scan# 3307
 Delta R.T. 0.28 min
 Lab File: VN056597.D
 Acq: 3 Jul 2019 20:11

Tgt Ion	Resp	Lower	Upper
173	1368		
175	867.7	24.4	73.4#
254	0.0	0.0	0.0

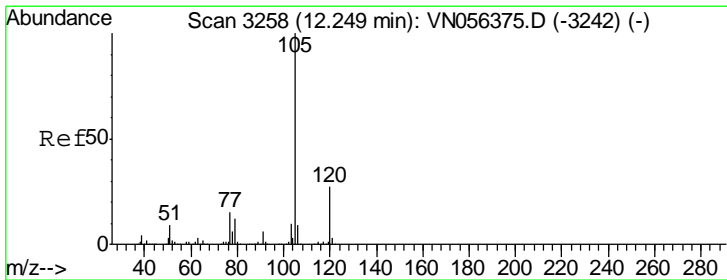
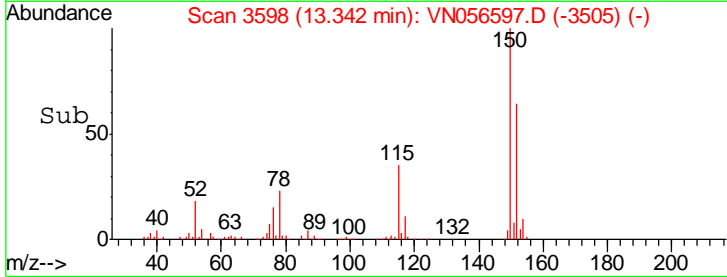
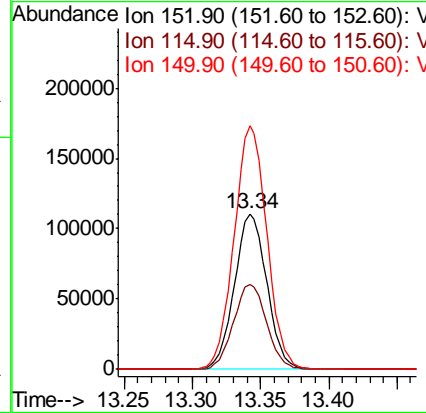
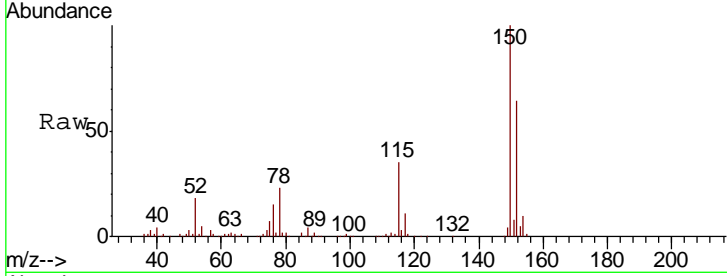




#72
 1,4-Dichlorobenzene-d4
 Concen: 50.000 ug/l
 RT: 13.34 min Scan# 3598
 Delta R.T. 0.00 min
 Lab File: VN056597.D
 Acq: 3 Jul 2019 20:11

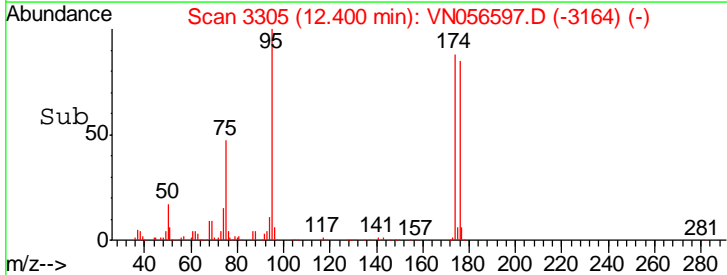
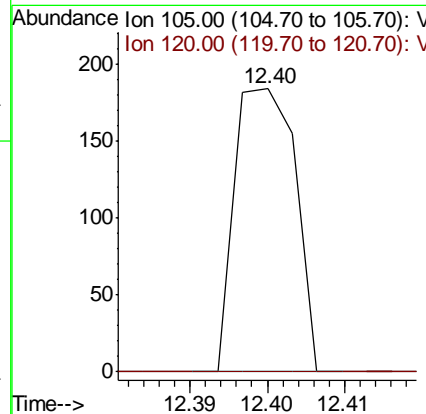
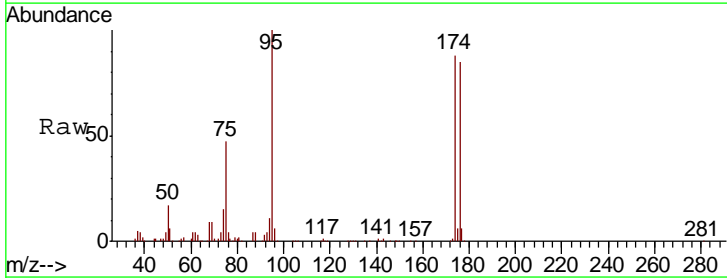
Instrument :
 MSVOA_N
 ClientSampled :
 MW-5

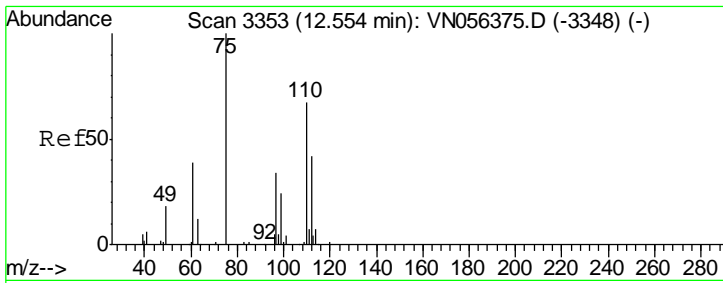
Tgt Ion	Resp	Lower	Upper
152	100		
115	56.0	28.1	84.4
150	158.5	0.0	348.4



#73
 Isopropylbenzene
 Concen: Below Cal
 RT: 12.40 min Scan# 3305
 Delta R.T. 0.15 min
 Lab File: VN056597.D
 Acq: 3 Jul 2019 20:11

Tgt Ion	Resp	Lower	Upper
105	100		
120	0.0	13.4	40.2#

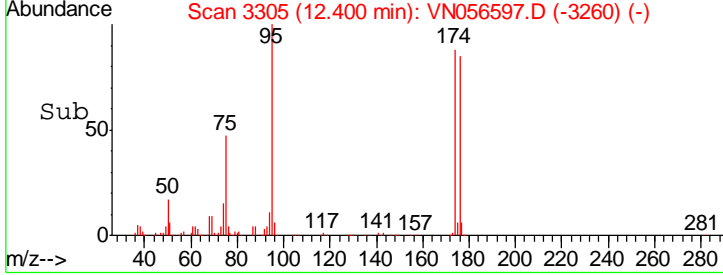
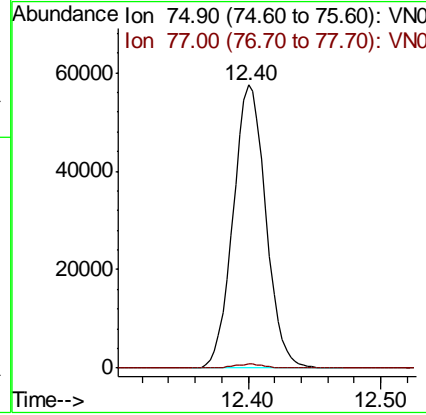
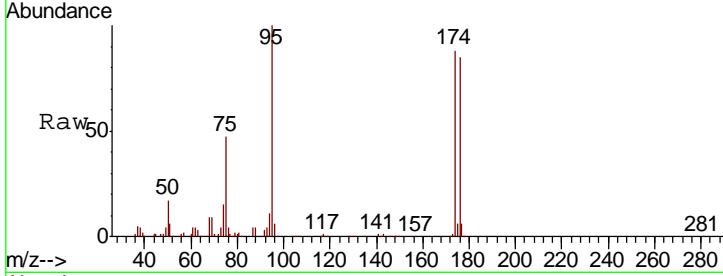




#76
 1,2,3-Trichloropropane
 Concen: 26.041 ug/l
 RT: 12.40 min Scan# 3305
 Delta R.T. -0.15 min
 Lab File: VN056597.D
 Acq: 3 Jul 2019 20:11

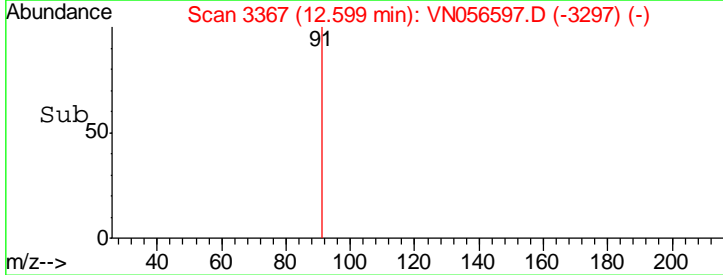
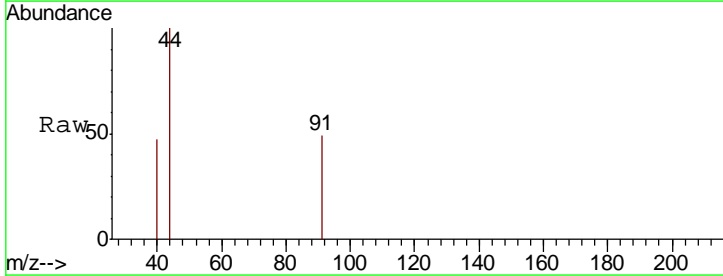
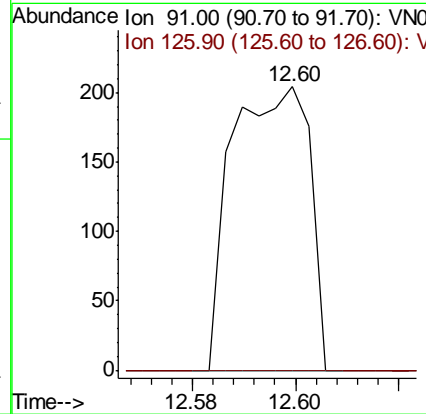
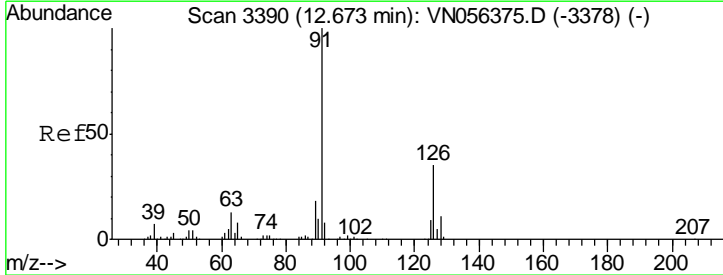
Instrument : MSVOA_N
 ClientSampled : MW-5

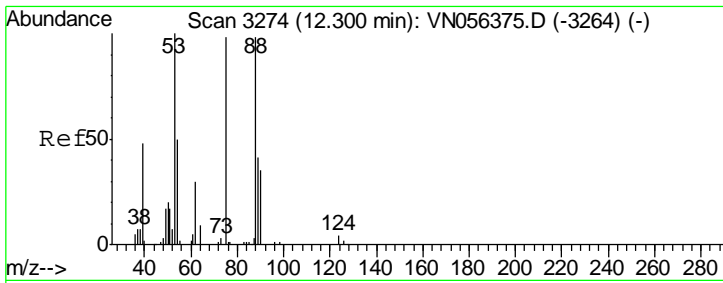
Tgt Ion	Resp	Lower	Upper
75	100		
77	1.3	0.0	0.0#



#79
 2-Chlorotoluene
 Concen: Below Cal
 RT: 12.60 min Scan# 3367
 Delta R.T. -0.07 min
 Lab File: VN056597.D
 Acq: 3 Jul 2019 20:11

Tgt Ion	Resp	Lower	Upper
91	100		
126	0.0	17.6	52.8#

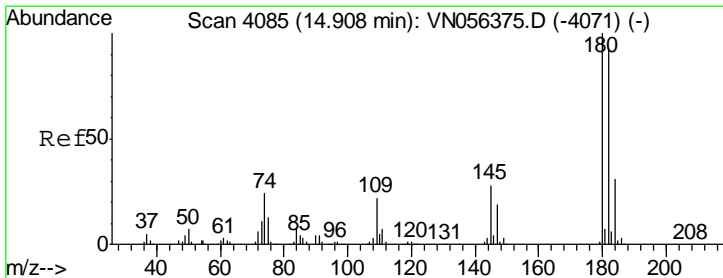
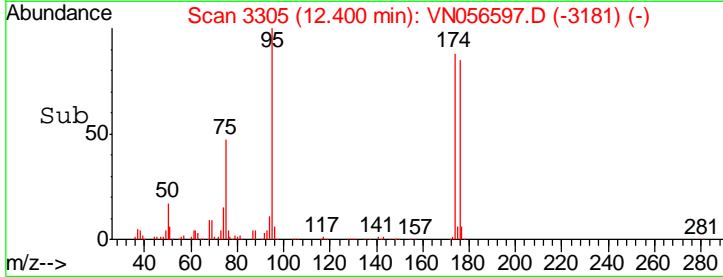
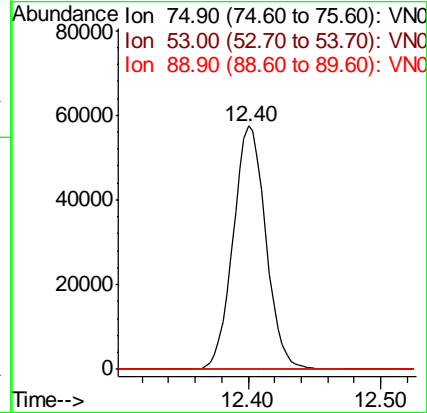
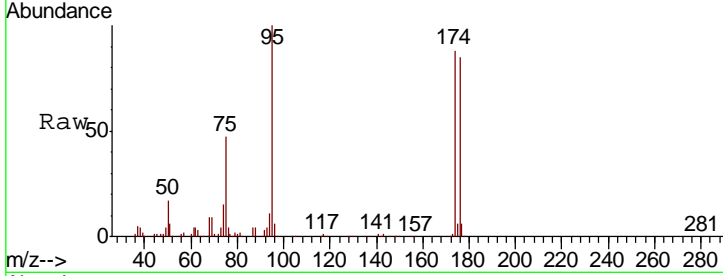




#81
 trans-1,4-Dichloro-2-butene
 Concen: 92.553 ug/l
 RT: 12.40 min Scan# 3305
 Delta R.T. 0.10 min
 Lab File: VN056597.D
 Acq: 3 Jul 2019 20:11

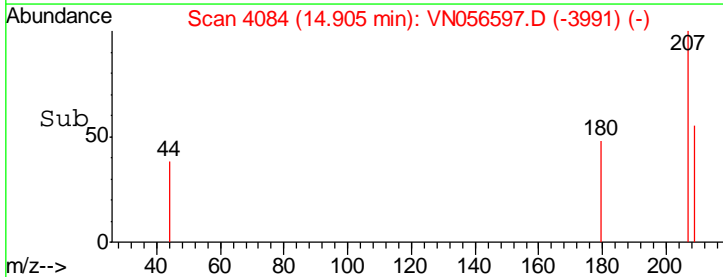
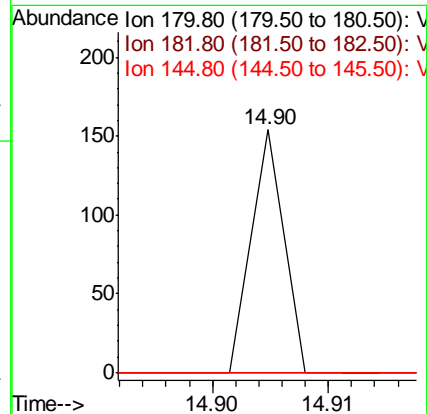
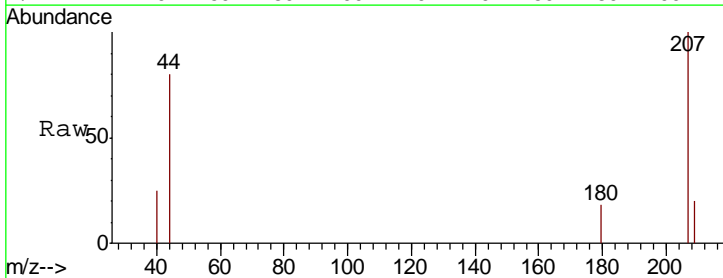
Instrument : MSVOA_N
 ClientSampled : MW-5

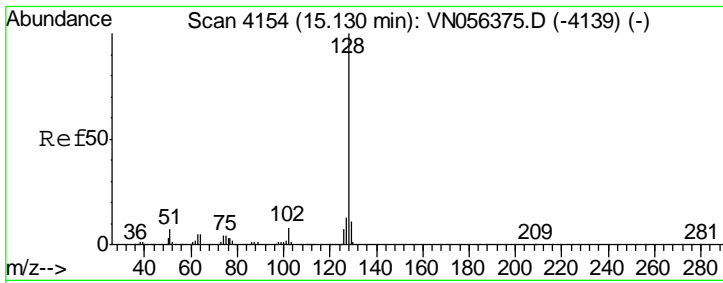
Tgt Ion	Resp	Lower	Upper
75	100		
53	0.0	83.9	125.9#
89	0.0	35.0	52.6#



#93
 1,2,4-Trichlorobenzene
 Concen: 5.622 ug/l
 RT: 14.90 min Scan# 4084
 Delta R.T. -0.00 min
 Lab File: VN056597.D
 Acq: 3 Jul 2019 20:11

Tgt Ion	Resp	Lower	Upper
180	100		
182	0.0	46.9	140.6#
145	0.0	14.4	43.0#





#95
 Naphthalene
 Concen: 5.308 ug/l
 RT: 15.14 min Scan# 4156
 Delta R.T. 0.01 min
 Lab File: VN056597.D
 Acq: 3 Jul 2019 20:11

Instrument : MSVOA_N
 ClientSampled : MW-5

Tot Ion:128 Resp: 588

Ion	Ratio	Lower	Upper
128	100		
127	0.0	10.2	15.2#
129	0.0	8.6	12.8#

