

Data Path : Z:\voasrv\HPCHEM1\MSVOA\_N\Data\VN070522\  
 Data File : VN073317.D  
 Acq On : 05 Jul 2022 15:58  
 Operator : JC\MD  
 Sample : N3564-04ME  
 Misc : 4.97g/5.0mL/100uL5.0mL/MSVOA\_N/MEOH  
 ALS Vial : 12 Sample Multiplier: 1

Instrument :  
 MSVOA\_N  
 ClientSampleId :  
 WC-14B-11-1-GRME

Integration Parameters: RTEINT.P

Integrator: RTE  
 Smoothing : ON Filtering: 5  
 Sampling : 1 Min Area: 3 % of largest Peak  
 Start Thrs: 0.2 Max Peaks: 100  
 Stop Thrs : 0 Peak Location: TOP

If leading or trailing edge < 100 prefer < Baseline drop else tangent >  
 Peak separation: 5

Method : Z:\voasrv\HPCHEM1\MSVOA\_N\methods\82N062822W.M  
 Title : SW846 8260

Signal : TIC: VN073317.D\data.ms

peak #	R.T. min	first scan	max scan	last scan	PK TY	peak height	corr. area	corr. % max.	% of total
1	3.034	186	195	204	rBV3	19852	48135	3.24%	0.395%
2	3.422	252	261	270	rVB5	8535	21156	1.43%	0.174%
3	4.993	517	528	529	rBV4	10587	29598	1.99%	0.243%
4	5.522	603	618	629	rBV4	48406	179770	12.12%	1.477%
5	6.369	753	762	774	rBV4	10022	29685	2.00%	0.244%
6	6.957	852	862	872	rBV3	8127	26136	1.76%	0.215%
7	7.245	903	911	924	rVB2	14190	40076	2.70%	0.329%
8	7.945	1021	1030	1036	rBV2	195962	501156	33.78%	4.118%
9	8.016	1036	1042	1050	rVV	419144	975835	65.77%	8.018%
10	8.104	1050	1057	1069	rVV2	33851	91963	6.20%	0.756%
11	8.222	1069	1077	1082	rVV2	35374	85225	5.74%	0.700%
12	8.281	1082	1087	1094	rVV4	25534	64853	4.37%	0.533%
13	8.369	1094	1102	1114	rVV	217252	492309	33.18%	4.045%
14	8.492	1114	1123	1130	rVV4	48127	120259	8.11%	0.988%
15	8.569	1130	1136	1141	rVV2	39136	90303	6.09%	0.742%
16	8.634	1141	1147	1158	rVB2	85815	195927	13.21%	1.610%
17	8.898	1183	1192	1214	rBV	549492	1181091	79.61%	9.704%
18	9.392	1263	1276	1282	rBV3	134033	382129	25.76%	3.140%
19	9.439	1282	1284	1293	rVB5	16864	30938	2.09%	0.254%
20	9.569	1301	1306	1312	rVV3	10623	20060	1.35%	0.165%
21	9.663	1312	1322	1330	rVB3	40548	90780	6.12%	0.746%
22	9.804	1339	1346	1356	rVB3	36735	72420	4.88%	0.595%
23	9.904	1358	1363	1367	rBV3	8830	16496	1.11%	0.136%
24	9.957	1367	1372	1375	rBV4	10352	16981	1.14%	0.140%
25	10.010	1375	1381	1394	rVB7	18687	54582	3.68%	0.448%
26	10.139	1394	1403	1409	rBV5	23829	61127	4.12%	0.502%
27	10.257	1417	1423	1428	rBV4	21598	44191	2.98%	0.363%
28	10.375	1435	1443	1458	rBV	775272	1483668	100.00%	12.190%
29	10.557	1466	1474	1483	rVB5	32088	92704	6.25%	0.762%
30	10.675	1487	1494	1496	rBV4	12839	21206	1.43%	0.174%
31	10.716	1496	1501	1508	rVB3	44329	83246	5.61%	0.684%
32	10.810	1508	1517	1525	rBV6	26204	68017	4.58%	0.559%
33	10.904	1528	1533	1537	rVB5	9625	16805	1.13%	0.138%
34	10.986	1539	1547	1554	rBV2	18981	37701	2.54%	0.310%
35	11.104	1554	1567	1573	rBV8	16908	67511	4.55%	0.555%
36	11.227	1585	1588	1592	rVB3	11522	16603	1.12%	0.136%

Data Path : Z:\voasrv\HPCHEM1\MSVOA\_N\Data\VN070522\  
 Data File : VN073317.D  
 Acq On : 05 Jul 2022 15:58  
 Operator : JC\MD  
 Sample : N3564-04ME  
 Misc : 4.97g/5.0mL/100uL5.0mL/MSVOA\_N/MEOH  
 ALS Vial : 12 Sample Multiplier: 1

Instrument :  
 MSVOA\_N  
 ClientSampleId :  
 WC-14B-11-1-GRME

Integration Parameters: RTEINT.P

Integrator: RTE  
 Smoothing : ON  
 Sampling : 1  
 Start Thrs : 0.2  
 Stop Thrs : 0

Filtering: 5  
 Min Area: 3 % of largest Peak  
 Max Peaks: 100  
 Peak Location: TOP

If leading or trailing edge < 100 prefer < Baseline drop else tangent >  
 Peak separation: 5

Method : Z:\voasrv\HPCHEM1\MSVOA\_N\methods\82N062822W.M  
 Title : SW846 8260

37	11.286	1592	1598	1603	rVB2	44227	80385	5.42%	0.660%
38	11.386	1610	1615	1620	rVB5	12227	23348	1.57%	0.192%
39	11.486	1627	1632	1641	rVB6	20521	45336	3.06%	0.372%
40	11.680	1658	1665	1677	rBV	801918	1401907	94.49%	11.518%
41	11.816	1684	1688	1692	rVB4	12008	15108	1.02%	0.124%
42	11.869	1692	1697	1702	rBV7	9076	19188	1.29%	0.158%
43	11.922	1702	1706	1711	rBV4	12524	26725	1.80%	0.220%
44	12.192	1744	1752	1758	rBV4	30534	71224	4.80%	0.585%
45	12.304	1763	1771	1776	rVB6	14805	31702	2.14%	0.260%
46	12.392	1781	1786	1788	rBV4	19450	31019	2.09%	0.255%
47	12.669	1826	1833	1842	rBV	668104	1096410	73.90%	9.008%
48	12.751	1843	1847	1852	rVV7	12032	22885	1.54%	0.188%
49	12.833	1856	1861	1868	rVB4	32590	61094	4.12%	0.502%
50	12.921	1870	1876	1879	rBV7	12701	26574	1.79%	0.218%
51	12.992	1881	1888	1894	rVV8	25035	70667	4.76%	0.581%
52	13.039	1894	1896	1903	rVB7	11527	20082	1.35%	0.165%
53	13.133	1908	1912	1916	rBV6	11033	17270	1.16%	0.142%
54	13.221	1923	1927	1935	rVB5	21348	36035	2.43%	0.296%
55	13.504	1968	1975	1978	rVV9	12790	31729	2.14%	0.261%
56	13.610	1986	1993	2004	rBV	808761	1360074	91.67%	11.175%
57	13.757	2012	2018	2023	rBV8	9191	18422	1.24%	0.151%
58	13.810	2023	2027	2032	rVB6	8510	15475	1.04%	0.127%
59	13.933	2043	2048	2054	rBV6	39665	70127	4.73%	0.576%
60	14.068	2064	2071	2076	rBV6	14040	33524	2.26%	0.275%
61	14.151	2082	2085	2089	rVB3	14779	18117	1.22%	0.149%
62	14.263	2098	2104	2109	rBV5	26265	52629	3.55%	0.432%
63	14.316	2109	2113	2120	rVB8	9646	24249	1.63%	0.199%
64	14.445	2130	2135	2138	rBV5	25031	42752	2.88%	0.351%
65	14.474	2138	2140	2145	rVB5	14180	21645	1.46%	0.178%
66	14.604	2158	2162	2169	rVV9	25484	48061	3.24%	0.395%
67	14.857	2200	2205	2210	rBV5	28317	69217	4.67%	0.569%
68	14.910	2211	2214	2220	rVB6	17814	37916	2.56%	0.312%
69	15.127	2247	2251	2254	rBV6	21809	29417	1.98%	0.242%
70	15.239	2265	2270	2276	rVB6	29630	64178	4.33%	0.527%
71	15.392	2293	2296	2302	rBV7	18229	32391	2.18%	0.266%
72	15.804	2363	2366	2371	rBV7	11405	21034	1.42%	0.173%
73	16.245	2435	2441	2452	rBV9	31703	90196	6.08%	0.741%
74	16.580	2493	2498	2505	rVB8	19307	45363	3.06%	0.373%
75	16.733	2516	2524	2532	rBV8	31385	96896	6.53%	0.796%

Data Path : Z:\voasrv\HPCHEM1\MSVOA\_N\Data\VN070522\  
Data File : VN073317.D  
Acq On : 05 Jul 2022 15:58  
Operator : JC\MD  
Sample : N3564-04ME  
Misc : 4.97g/5.0mL/100uL5.0mL/MSVOA\_N/MEOH  
ALS Vial : 12 Sample Multiplier: 1

Instrument :  
MSVOA\_N  
ClientSampleId :  
WC-14B-11-1-GRME

Integration Parameters: RTEINT.P  
Integrator: RTE  
Smoothing : ON Filtering: 5  
Sampling : 1 Min Area: 3 % of largest Peak  
Start Thrs: 0.2 Max Peaks: 100  
Stop Thrs : 0 Peak Location: TOP

If leading or trailing edge < 100 prefer < Baseline drop else tangent >  
Peak separation: 5

Method : Z:\voasrv\HPCHEM1\MSVOA\_N\methods\82N062822W.M  
Title : SW846 8260

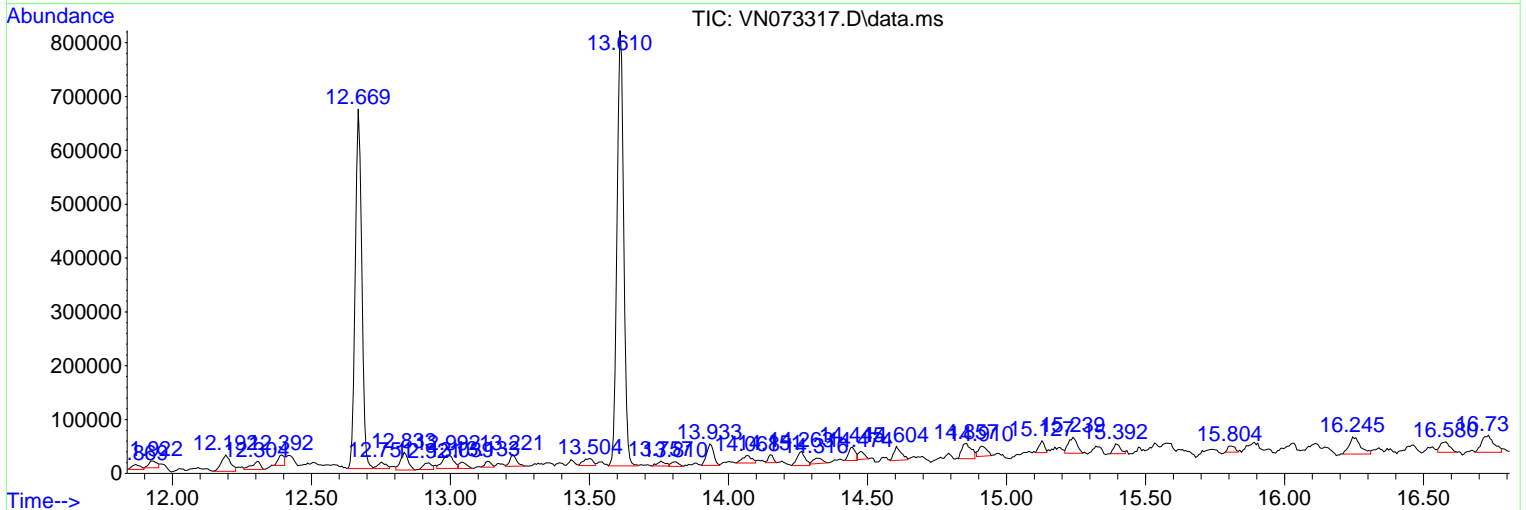
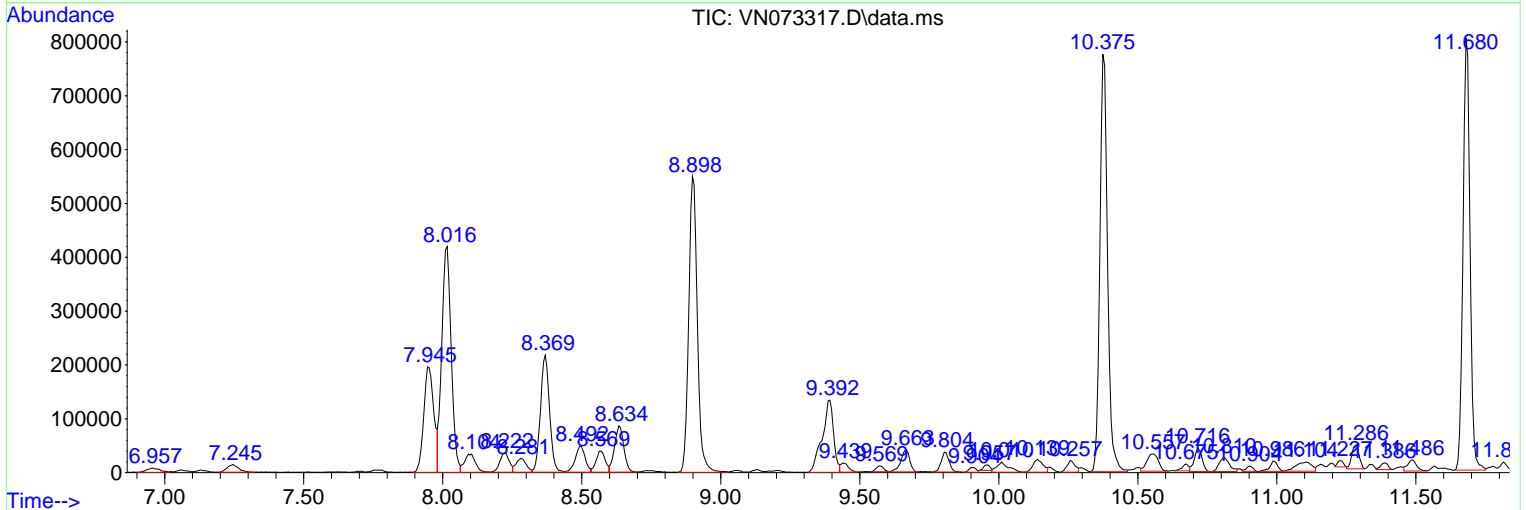
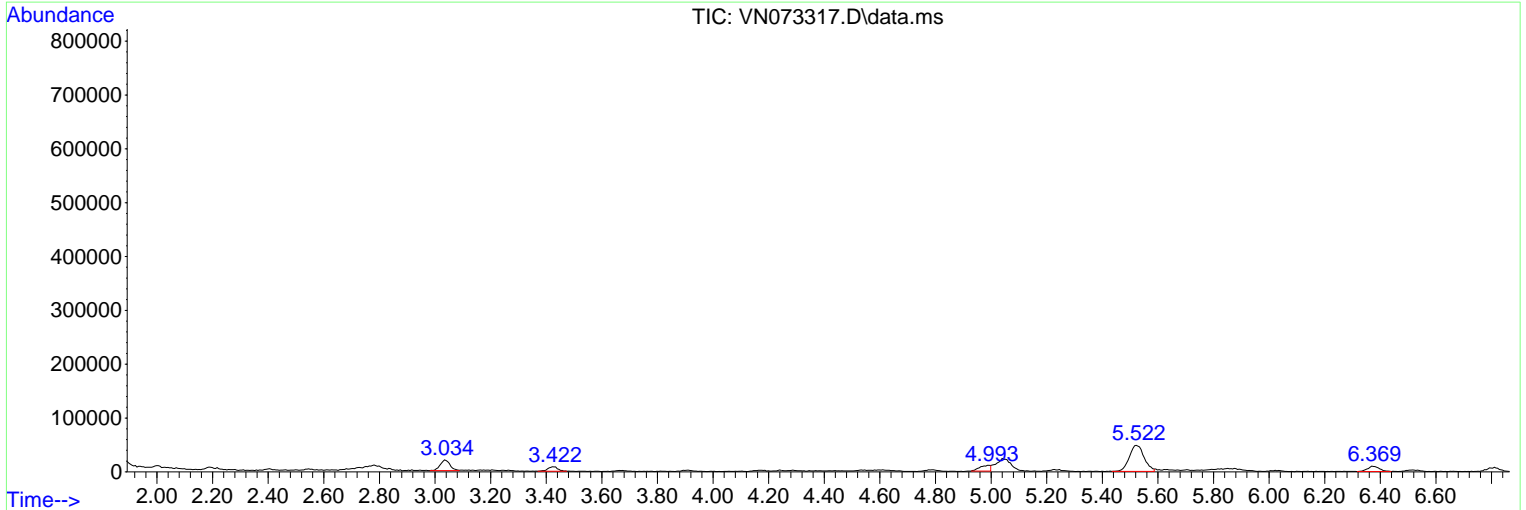
Sum of corrected areas: 12171013

Data Path : Z:\voasrv\HPCHEM1\MSVOA\_N\Data\VN070522\  
 Data File : VN073317.D  
 Acq On : 05 Jul 2022 15:58  
 Operator : JC\MD  
 Sample : N3564-04ME  
 Misc : 4.97g/5.0mL/100uL5.0mL/MSVOA\_N/MEOH  
 ALS Vial : 12 Sample Multiplier: 1

**Instrument :**  
 MSVOA\_N  
**ClientSampleId :**  
 WC-14B-11-1-GRME

Quant Method : Z:\voasrv\HPCHEM1\MSVOA\_N\methods\82N062822W.M  
 Quant Title : SW846 8260

TIC Library : C:\Database\NIST20.L  
 TIC Integration Parameters: LSCINT.P



Data Path : Z:\voasrv\HPCHEM1\MSVOA\_N\Data\VN070522\  
Data File : VN073317.D  
Acq On : 05 Jul 2022 15:58  
Operator : JC\MD  
Sample : N3564-04ME  
Misc : 4.97g/5.0mL/100uL5.0mL/MSVOA\_N/MEOH  
ALS Vial : 12 Sample Multiplier: 1

**Instrument :**  
MSVOA\_N  
**ClientSampleId :**  
WC-14B-11-1-GRME

Quant Method : Z:\voasrv\HPCHEM1\MSVOA\_N\methods\82N062822W.M  
Quant Title : SW846 8260

TIC Library : C:\Database\NIST20.L  
TIC Integration Parameters: LSCINT.P

No Library Search Compounds Detected

\*\*\*\*\*

Data Path : Z:\voasrv\HPCHEM1\MSVOA\_N\Data\VN070522\  
Data File : VN073317.D  
Acq On : 05 Jul 2022 15:58  
Operator : JC\MD  
Sample : N3564-04ME  
Misc : 4.97g/5.0mL/100uL5.0mL/MSVOA\_N/MEOH  
ALS Vial : 12 Sample Multiplier: 1

Instrument :  
MSVOA\_N  
ClientSampleId :  
WC-14B-11-1-GRME

Quant Method : Z:\voasrv\HPCHEM1\MSVOA\_N\methods\82N062822W.M  
Quant Title : SW846 8260

TIC Library : C:\Database\NIST20.L  
TIC Integration Parameters: LSCINT.P

TIC Top Hit name	RT	EstConc	Units	Response	--Internal Standard--			
					#	RT	Resp	Conc

---