

Data Path : Z:\VOASRV\HPCHEM1\MSVOA N\DATA\VN070820\  
 Data File : VN062427.D  
 Acq On : 9 Jul 2020 00:22  
 Operator : JC/MD  
 Sample : L3215-01  
 Misc : 5.00mL/MSVOA N/WATER  
 ALS Vial : 37 Sample Multiplier: 1

Instrument :  
 MSVOA\_N  
 ClientSampleId :  
 MW-15

Quant Time: Jul 09 03:21:50 2020  
 Quant Method : Z:\VOASRV\HPCHEM1\MSVOA\_N\METHODS\82N070820W.M  
 Quant Title : SW846 8260  
 QLast Update : Thu Jul 09 02:12:34 2020  
 Response via : Initial Calibration

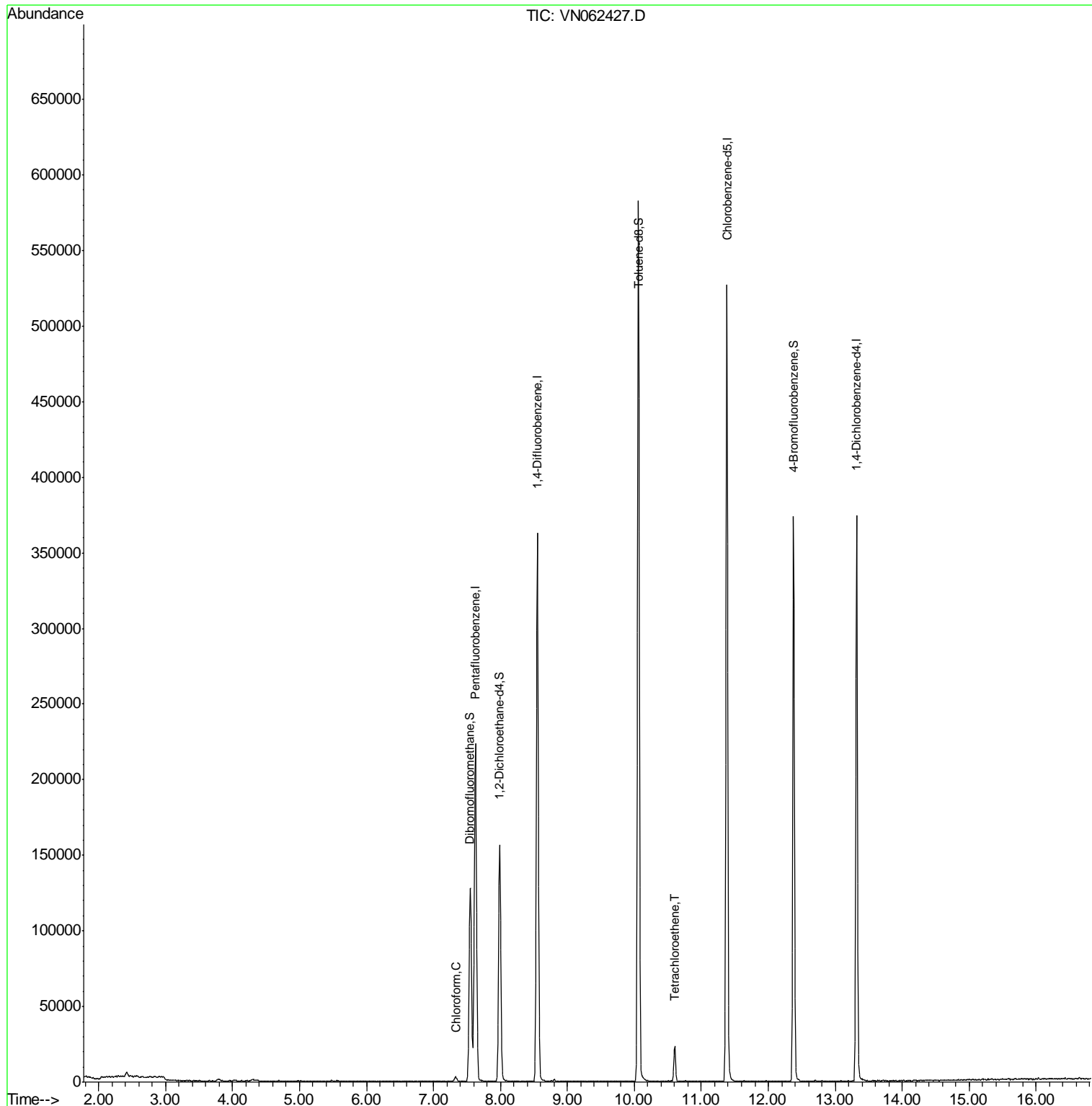
Internal Standards	R.T.	QIon	Response	Conc	Units	Dev(Min)
1) Pentafluorobenzene	7.63	168	170990	50.00	ug/l	0.00
34) 1,4-Difluorobenzene	8.55	114	306017	50.00	ug/l	0.00
63) Chlorobenzene-d5	11.38	117	289767	50.00	ug/l	0.00
72) 1,4-Dichlorobenzene-d4	13.32	152	96742	50.00	ug/l	0.00
System Monitoring Compounds						
33) 1,2-Dichloroethane-d4	7.99	65	135085	51.36	ug/l	0.00
Spiked Amount	50.000		Recovery	=	102.72%	
35) Dibromofluoromethane	7.55	113	98783	52.22	ug/l	0.00
Spiked Amount	50.000		Recovery	=	104.44%	
50) Toluene-d8	10.06	98	395552	52.97	ug/l	0.00
Spiked Amount	50.000		Recovery	=	105.94%	
62) 4-Bromofluorobenzene	12.38	95	136560	50.04	ug/l	0.00
Spiked Amount	50.000		Recovery	=	100.08%	
Target Compounds						
30) Chloroform	7.33	83	3569	0.938	ug/l	98
64) Tetrachloroethene	10.60	164	5617	3.267	ug/l	92

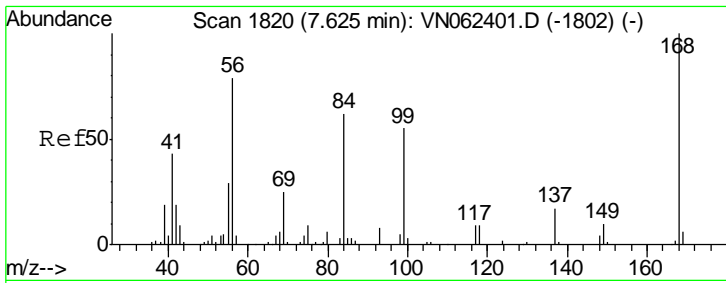
(#) = qualifier out of range (m) = manual integration (+) = signals summed

Data Path : Z:\VOASRV\HPCHEM1\MSVOA N\DATA\VN070820\  
 Data File : VN062427.D  
 Acq On : 9 Jul 2020 00:22  
 Operator : JC/MD  
 Sample : L3215-01  
 Misc : 5.00mL/MSVOA N/WATER  
 ALS Vial : 37 Sample Multiplier: 1

Instrument :  
 MSVOA\_N  
 ClientSampleID :  
 MW-15

Quant Time: Jul 09 03:21:50 2020  
 Quant Method : Z:\VOASRV\HPCHEM1\MSVOA\_N\METHODS\82N070820W.M  
 Quant Title : SW846 8260  
 QLast Update : Thu Jul 09 02:12:34 2020  
 Response via : Initial Calibration

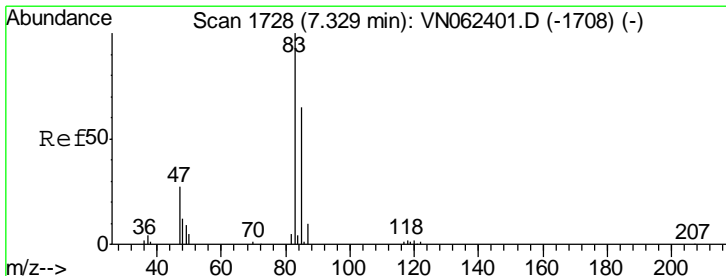
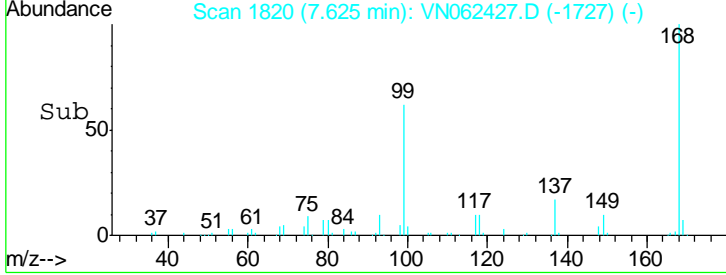
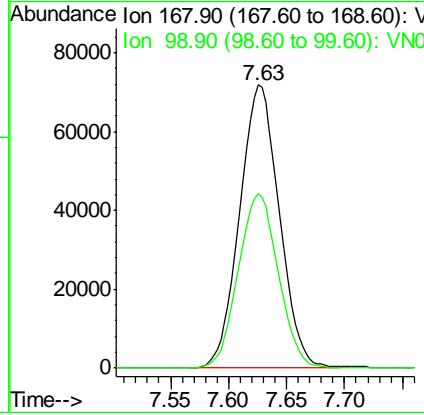
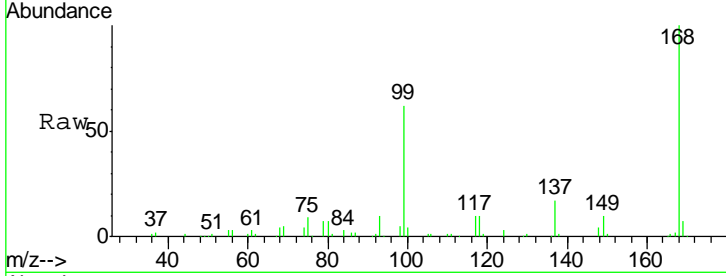




#1  
 Pentafluorobenzene  
 Concen: 50.000 ug/l  
 RT: 7.63 min Scan# 1820  
 Delta R.T. 0.00 min  
 Lab File: VN062427.D  
 Acq: 9 Jul 2020 00:22

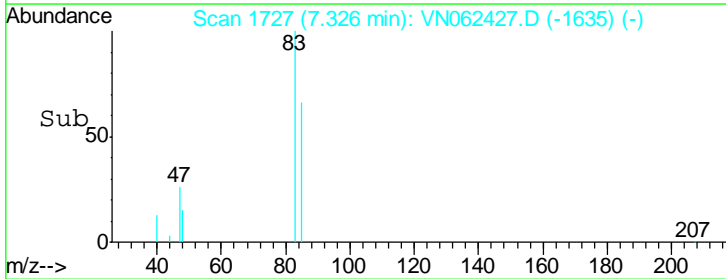
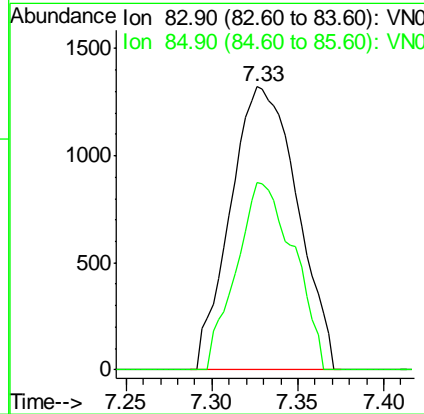
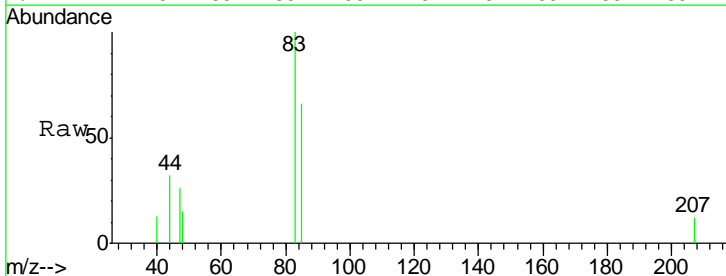
Instrument :  
 MSVOA\_N  
 ClientSampled :  
 MW-15

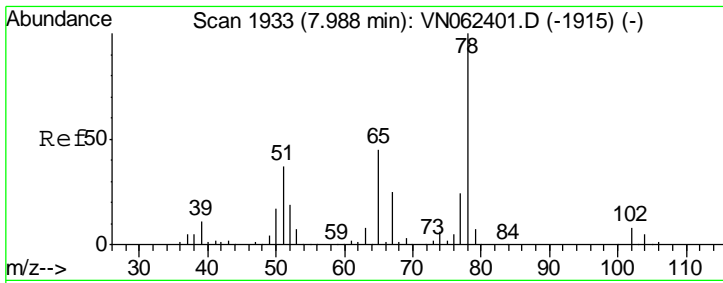
Tgt Ion: 168 Resp: 170990  
 Ion Ratio Lower Upper  
 168 100  
 99 61.6 48.8 73.2



#30  
 Chloroform  
 Concen: 0.938 ug/l  
 RT: 7.33 min Scan# 1727  
 Delta R.T. -0.00 min  
 Lab File: VN062427.D  
 Acq: 9 Jul 2020 00:22

Tgt Ion: 83 Resp: 3569  
 Ion Ratio Lower Upper  
 83 100  
 85 66.3 51.8 77.6

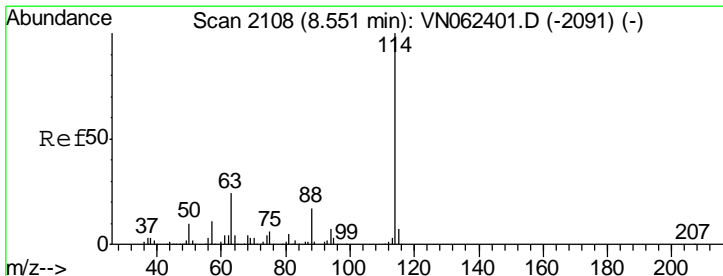
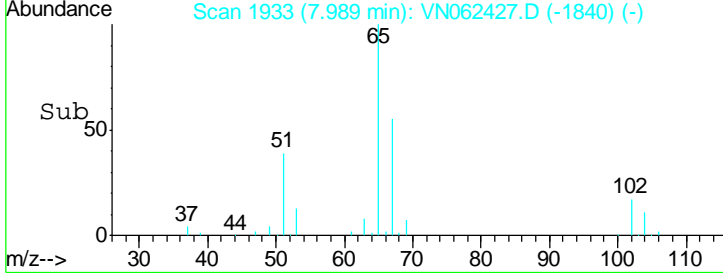
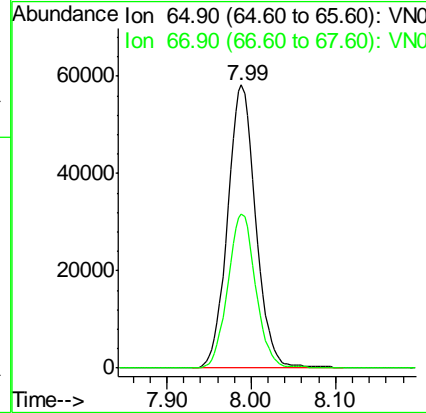
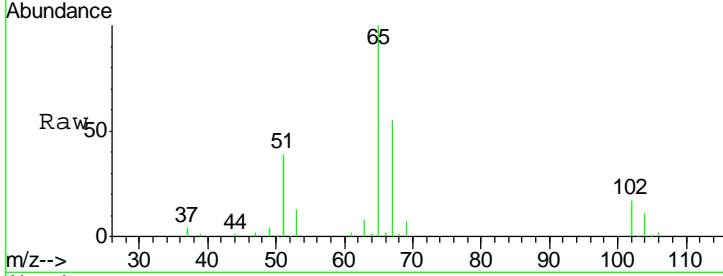




#33  
 1,2-Dichloroethane-d4  
 Concen: 51.362 ug/l  
 RT: 7.99 min Scan# 1933  
 Delta R.T. 0.00 min  
 Lab File: VN062427.D  
 Acq: 9 Jul 2020 00:22

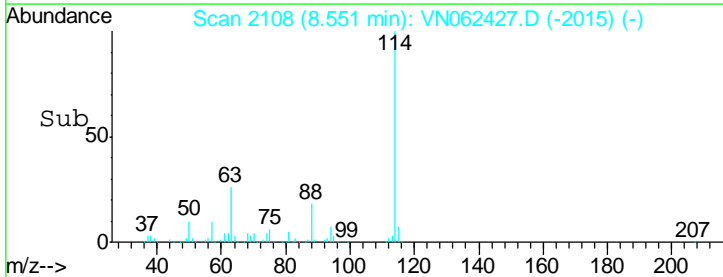
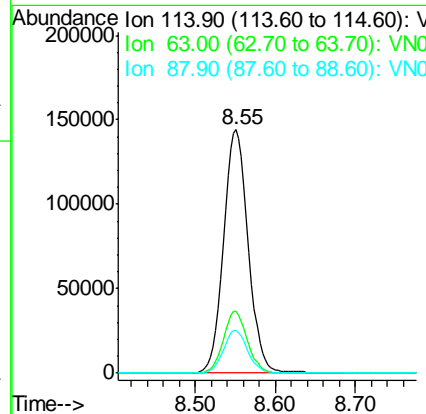
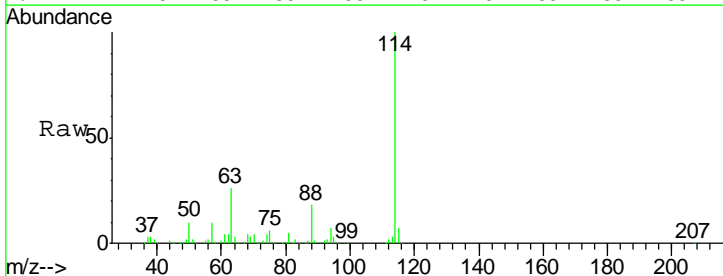
Instrument :  
 MSVOA\_N  
 ClientSampled :  
 MW-15

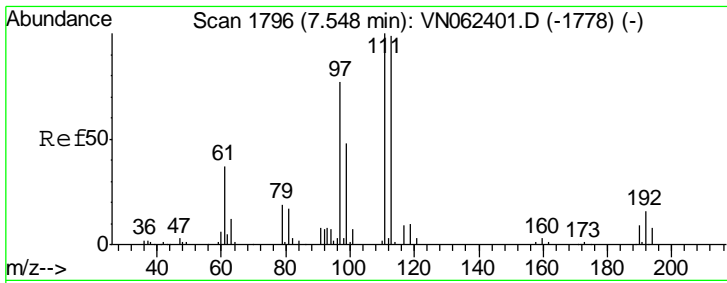
Tgt Ion	Resp	Lower	Upper
65	135085		
67	53.5	0.0	107.6



#34  
 1,4-Difluorobenzene  
 Concen: 50.000 ug/l  
 RT: 8.55 min Scan# 2108  
 Delta R.T. 0.00 min  
 Lab File: VN062427.D  
 Acq: 9 Jul 2020 00:22

Tgt Ion	Resp	Lower	Upper
114	306017		
63	25.5	0.0	48.4
88	17.5	0.0	33.8

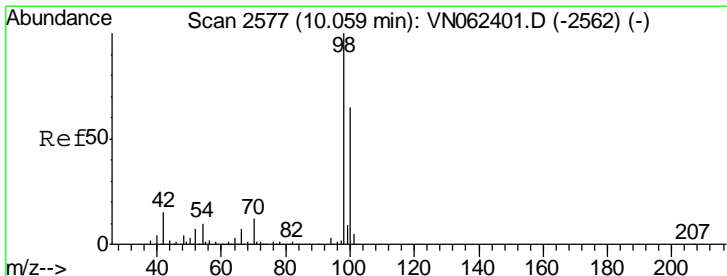
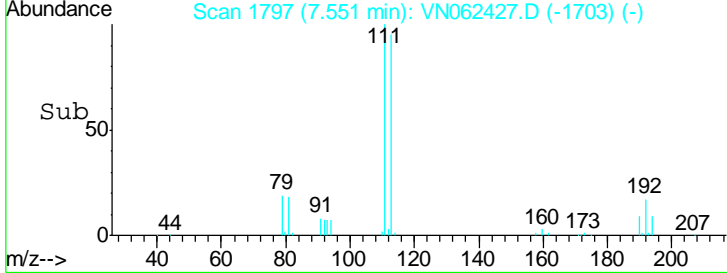
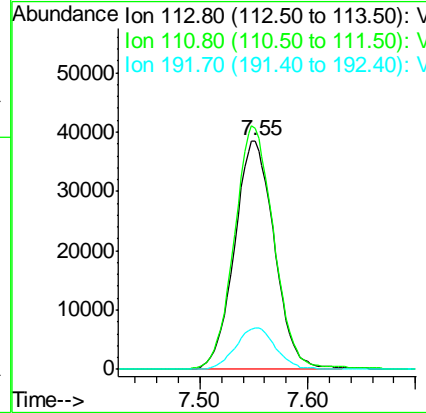
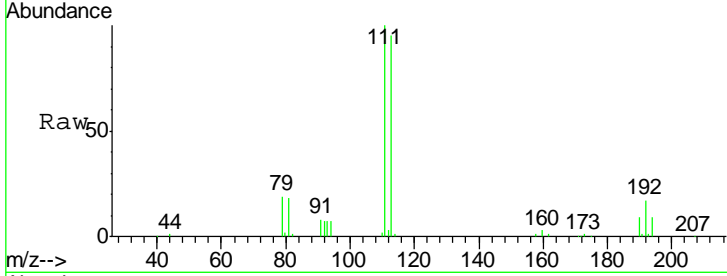




#35  
 Dibromofluoromethane  
 Concen: 52.222 ug/l  
 RT: 7.55 min Scan# 1797  
 Delta R.T. 0.00 min  
 Lab File: VN062427.D  
 Acq: 9 Jul 2020 00:22

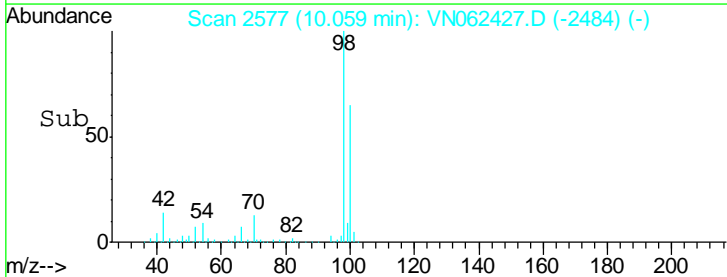
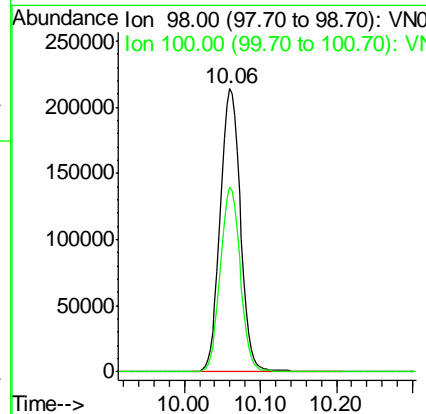
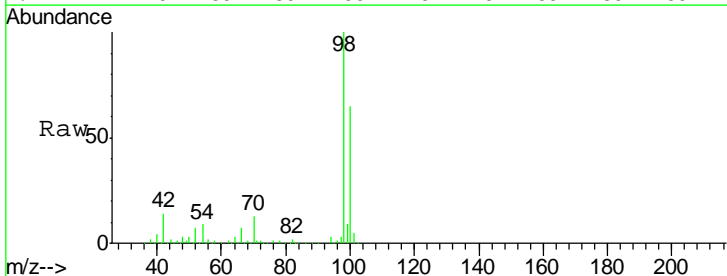
Instrument :  
 MSVOA\_N  
 ClientSampled :  
 MW-15

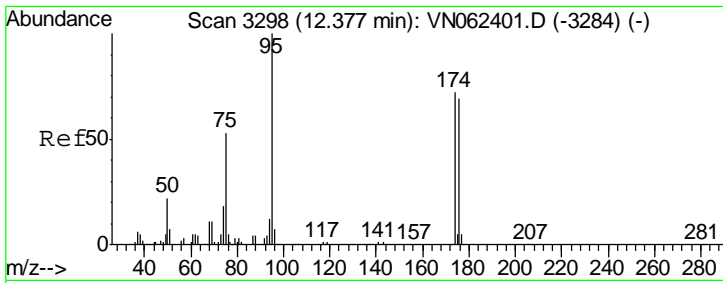
Tgt Ion	Resp	Lower	Upper
113	98783		
111	105.2	83.1	124.7
192	18.3	14.1	21.1



#50  
 Toluene-d8  
 Concen: 52.970 ug/l  
 RT: 10.06 min Scan# 2577  
 Delta R.T. 0.00 min  
 Lab File: VN062427.D  
 Acq: 9 Jul 2020 00:22

Tgt Ion	Resp	Lower	Upper
98	395552		
100	64.3	51.5	77.3

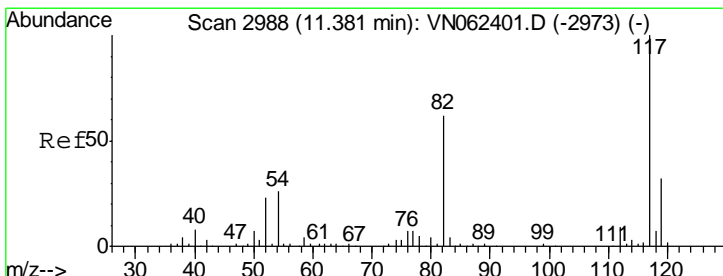
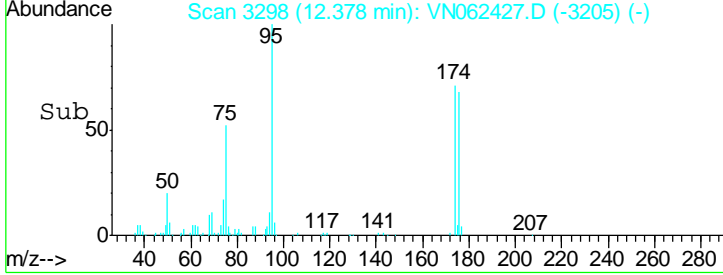
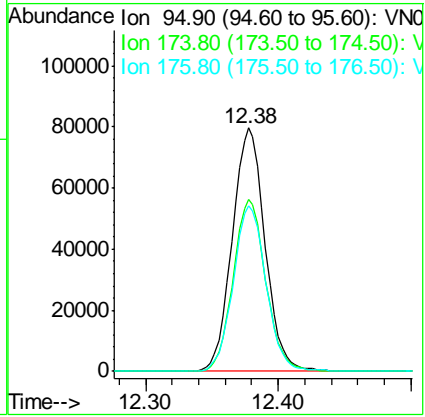
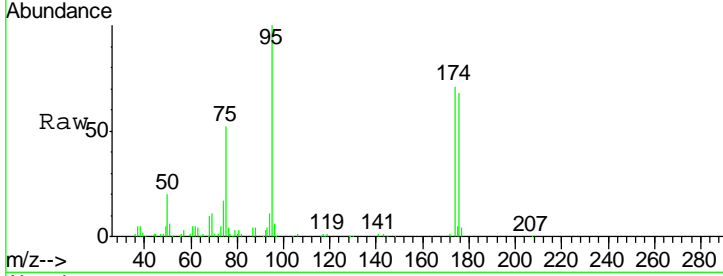




#62  
 4-Bromofluorobenzene  
 Concen: 50.043 ug/l  
 RT: 12.38 min Scan# 3298  
 Delta R.T. 0.00 min  
 Lab File: VN062427.D  
 Acq: 9 Jul 2020 00:22

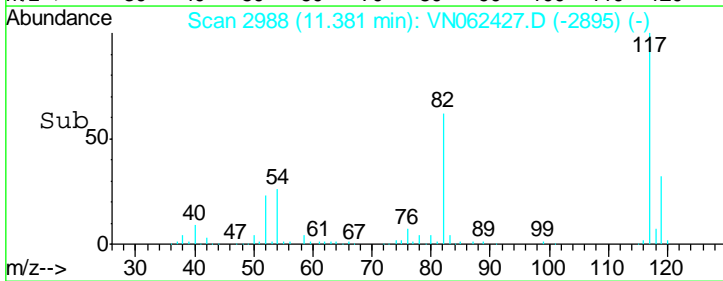
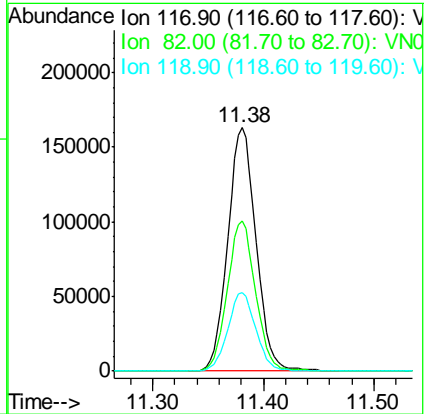
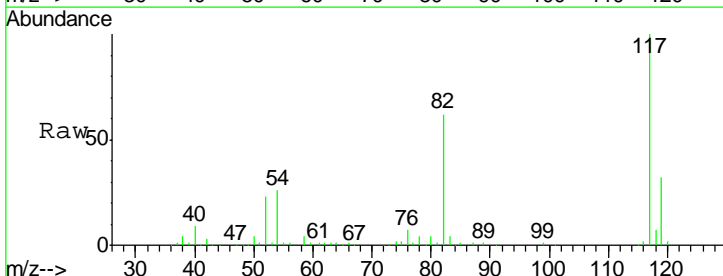
Instrument : MSVOA\_N  
 Client Sampled : MW-15

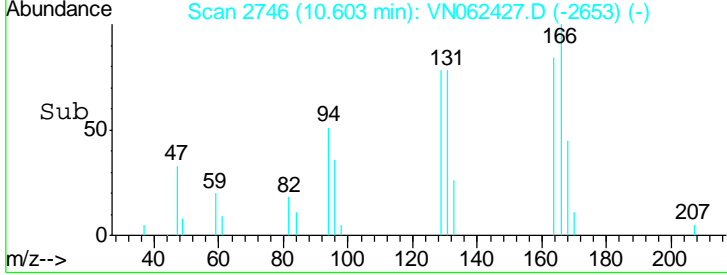
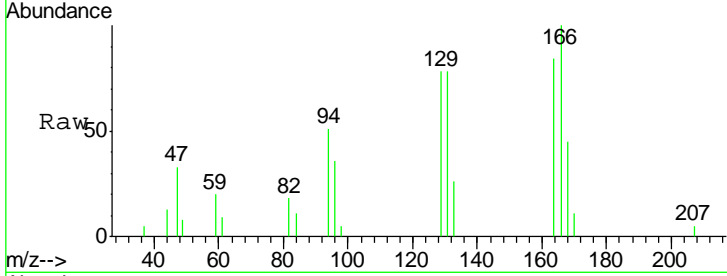
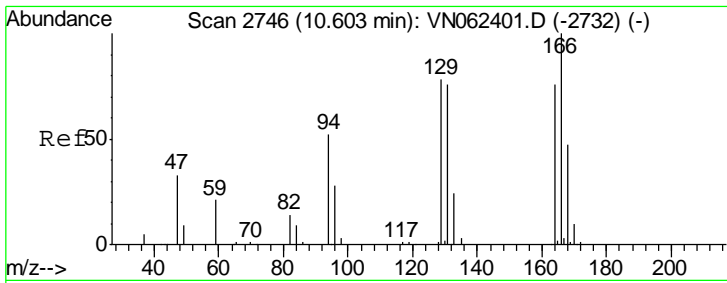
Tgt Ion	Resp	Lower	Upper
95	136560		
174	70.7	0.0	141.6
176	68.5	0.0	137.2



#63  
 Chlorobenzene-d5  
 Concen: 50.000 ug/l  
 RT: 11.38 min Scan# 2988  
 Delta R.T. 0.00 min  
 Lab File: VN062427.D  
 Acq: 9 Jul 2020 00:22

Tgt Ion	Resp	Lower	Upper
117	289767		
82	61.7	49.6	74.4
119	32.4	25.4	38.0

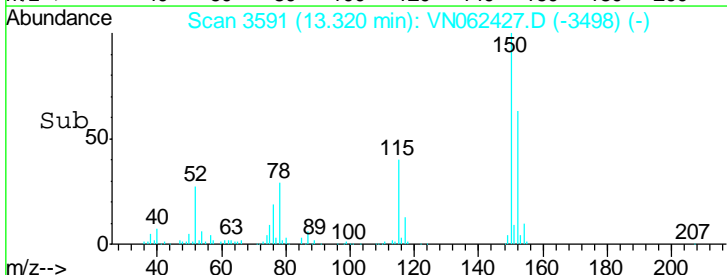
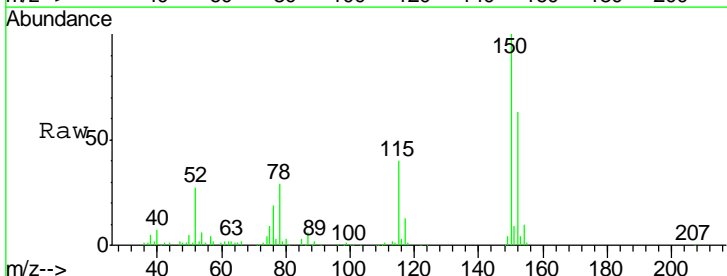
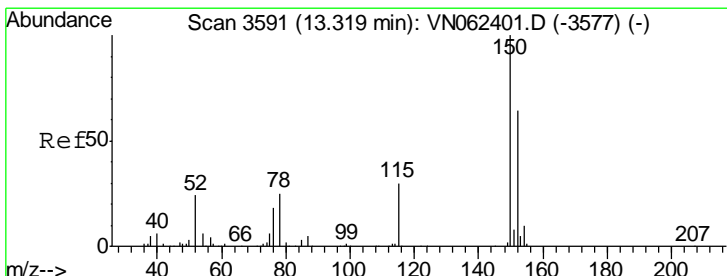
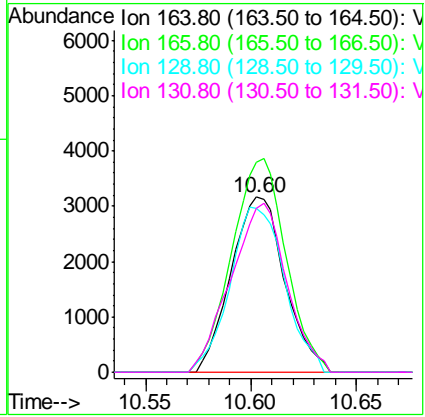




#64  
 Tetrachloroethene  
 Concen: 3.267 ug/l  
 RT: 10.60 min Scan# 2746  
 Delta R.T. 0.00 min  
 Lab File: VN062427.D  
 Acq: 9 Jul 2020 00:22

Instrument : MSVOA\_N  
 ClientSampled : MW-15

Tgt Ion	Resp	Lower	Upper
164	100		
166	119.7	104.9	157.3
129	93.7	81.8	122.6
131	93.9	79.3	118.9



#72  
 1,4-Dichlorobenzene-d4  
 Concen: 50.000 ug/l  
 RT: 13.32 min Scan# 3591  
 Delta R.T. 0.00 min  
 Lab File: VN062427.D  
 Acq: 9 Jul 2020 00:22

Tgt Ion	Resp	Lower	Upper
152	100		
115	63.3	31.4	94.2
150	157.4	0.0	347.4

