

Data Path : Z:\voasrv\HPCHEM1\MSVOA\_N\Data\VN070822\  
 Data File : VN073384.D  
 Acq On : 08 Jul 2022 10:42  
 Operator : JC\MD  
 Sample : VN0708MBL01  
 Misc : 5.00g/10mL/100uL/5.00mL/MSVOA\_N/MEOH  
 ALS Vial : 3 Sample Multiplier: 1

Instrument :  
 MSVOA\_N  
 ClientSampleId :  
 VN0708MBL01

Quant Time: Jul 09 05:21:44 2022  
 Quant Method : Z:\voasrv\HPCHEM1\MSVOA\_N\methods\82N062822W.M  
 Quant Title : SW846 8260  
 QLast Update : Wed Jun 29 01:54:03 2022  
 Response via : Initial Calibration

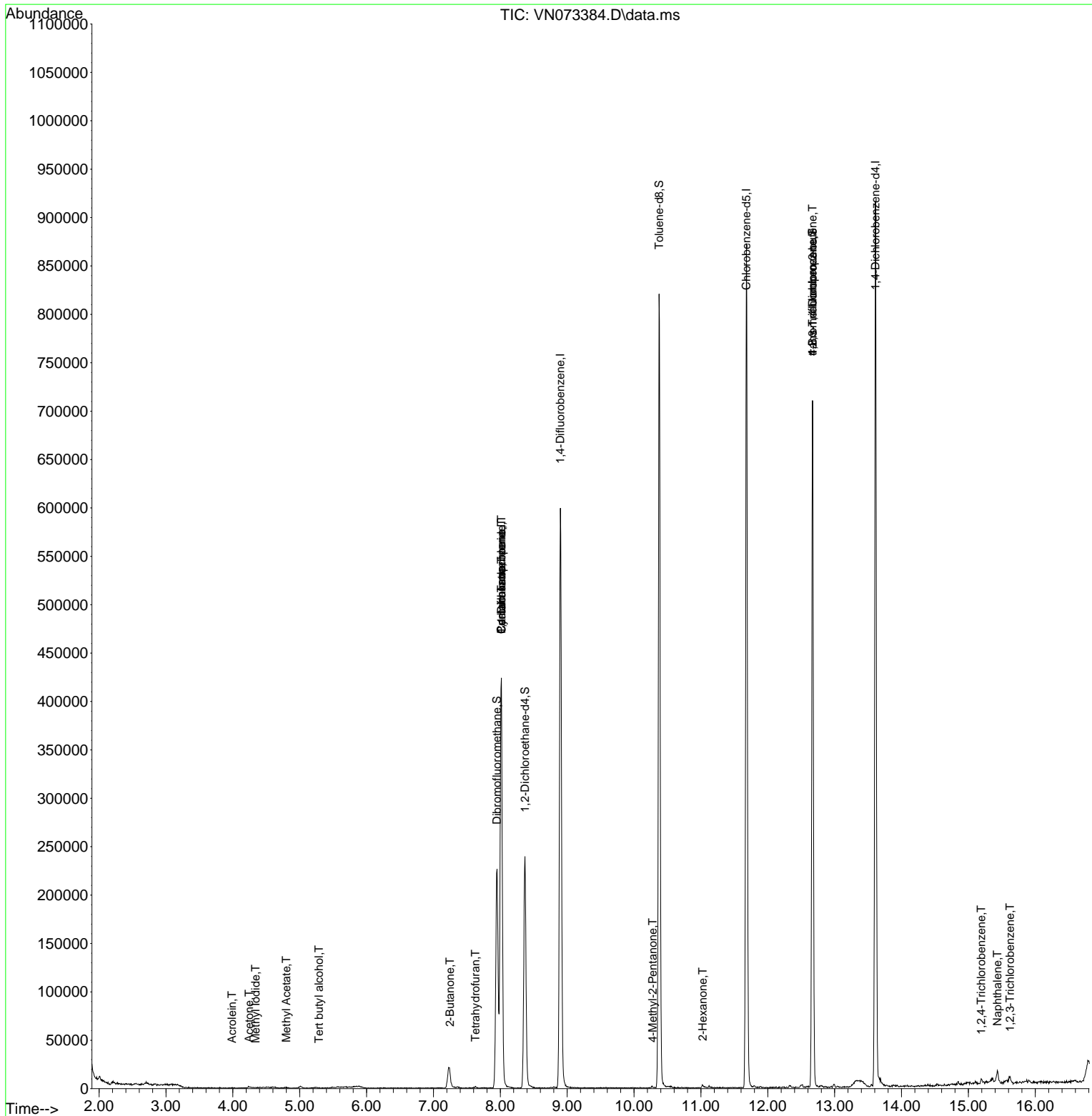
Compound	R.T.	QIon	Response	Conc	Units	Dev(Min)
-----						
Internal Standards						
1) Pentafluorobenzene	8.016	168	321508	50.000	ug/l	0.00
34) 1,4-Difluorobenzene	8.898	114	541076	50.000	ug/l	0.00
63) Chlorobenzene-d5	11.680	117	494025	50.000	ug/l	0.00
72) 1,4-Dichlorobenzene-d4	13.609	152	239754	50.000	ug/l	0.00
System Monitoring Compounds						
33) 1,2-Dichloroethane-d4	8.369	65	203690	43.886	ug/l	0.00
Spiked Amount	50.000	Range 74 - 125	Recovery	=	87.780%	
35) Dibromofluoromethane	7.951	113	170437	47.345	ug/l	0.00
Spiked Amount	50.000	Range 75 - 124	Recovery	=	94.700%	
50) Toluene-d8	10.374	98	567713	44.403	ug/l	0.00
Spiked Amount	50.000	Range 86 - 113	Recovery	=	88.800%	
62) 4-Bromofluorobenzene	12.668	95	247726	50.418	ug/l	0.00
Spiked Amount	50.000	Range 83 - 123	Recovery	=	100.840%	
Target Compounds						
						Qvalue
10) Methyl Iodide	4.339	142	74	3.749	ug/l #	50
11) Tert butyl alcohol	5.286	59	263	0.234	ug/l #	72
13) Acrolein	3.987	56	164	0.231	ug/l #	58
16) Acetone	4.245	43	2177	0.836	ug/l	98
18) Methyl Acetate	4.798	43	1734	0.238	ug/l #	56
25) 2-Butanone	7.245	43	1101	0.265	ug/l #	45
29) Tetrahydrofuran	7.628	42	1061	0.374	ug/l #	48
31) Cyclohexane	8.016	56	7762	1.021	ug/l #	1
36) 1,1-Dichloropropene	8.016	75	25833	4.664	ug/l #	50
38) Carbon Tetrachloride	8.016	117	34663	6.051	ug/l #	15
51) 4-Methyl-2-Pentanone	10.280	43	1682	0.221	ug/l #	70
59) 2-Hexanone	11.027	43	3067	0.527	ug/l	77
76) 1,2,3-Trichloropropane	12.668	75	131404	20.961	ug/l #	1
81) trans-1,4-Dichloro-2-b...	12.668	75	131404	57.484	ug/l #	10
93) 1,2,4-Trichlorobenzene	15.192	180	1722	0.376	ug/l	94
95) Naphthalene	15.433	128	11319	0.613	ug/l #	81
96) 1,2,3-Trichlorobenzene	15.621	180	2044	0.433	ug/l	93

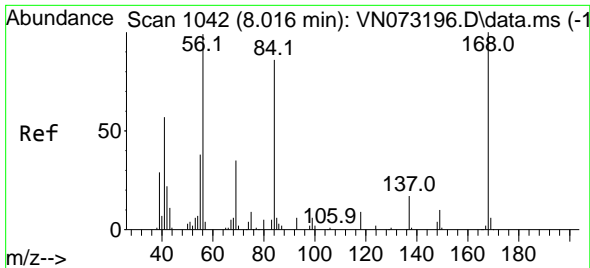
(#) = qualifier out of range (m) = manual integration (+) = signals summed

Data Path : Z:\voasrv\HPCHEM1\MSVOA\_N\Data\VN070822\  
 Data File : VN073384.D  
 Acq On : 08 Jul 2022 10:42  
 Operator : JC\MD  
 Sample : VN0708MBL01  
 Misc : 5.00g/10mL/100uL/5.00mL/MSVOA\_N/MEOH  
 ALS Vial : 3 Sample Multiplier: 1

Instrument :  
 MSVOA\_N  
 ClientSampleId :  
 VN0708MBL01

Quant Time: Jul 09 05:21:44 2022  
 Quant Method : Z:\voasrv\HPCHEM1\MSVOA\_N\methods\82N062822W.M  
 Quant Title : SW846 8260  
 QLast Update : Wed Jun 29 01:54:03 2022  
 Response via : Initial Calibration

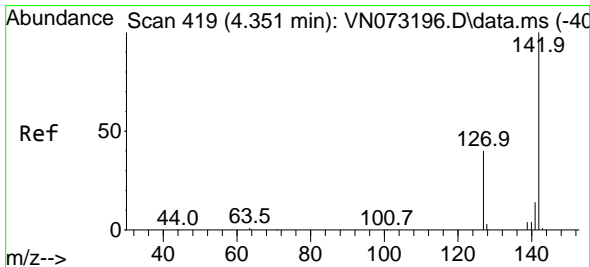
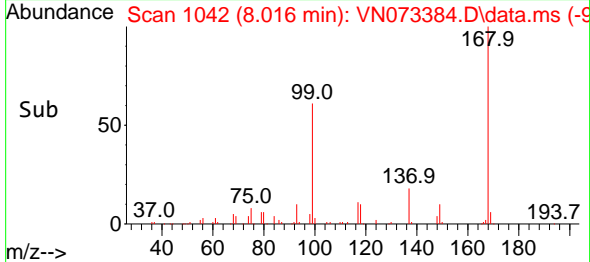
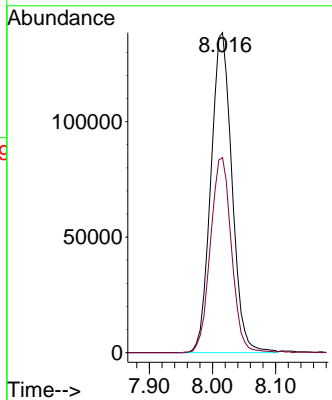
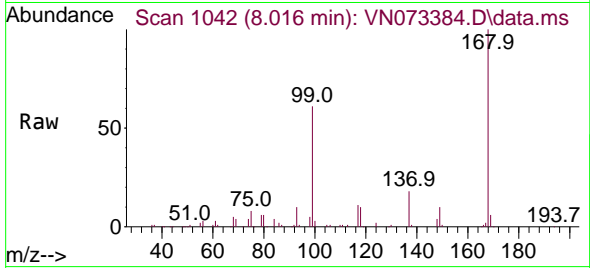




#1  
 Pentafluorobenzene  
 Concen: 50.000 ug/l  
 RT: 8.016 min Scan# 1042  
 Delta R.T. -0.000 min  
 Lab File: VN073384.D  
 Acq: 08 Jul 2022 10:42

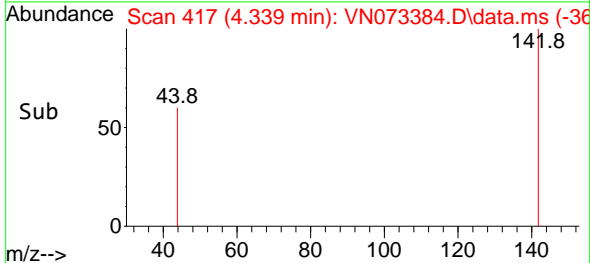
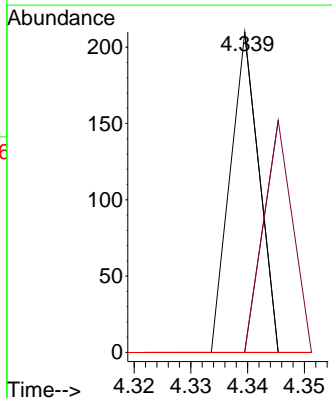
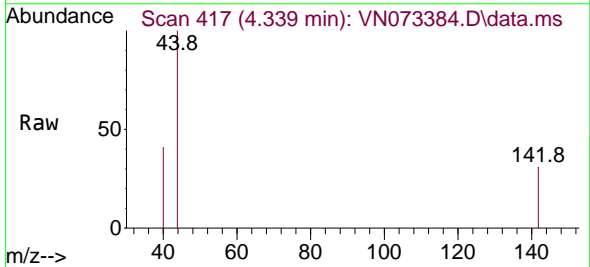
Instrument : MSVOA\_N  
 ClientSampleId : VN0708MBL01

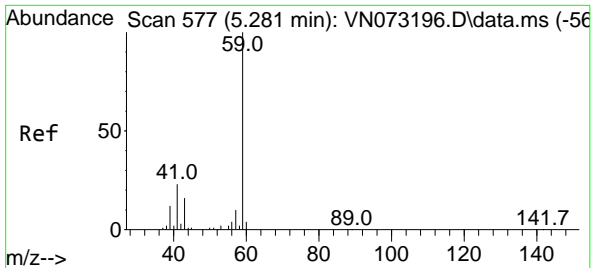
Tgt Ion:168 Resp: 321508  
 Ion Ratio Lower Upper  
 168 100  
 99 61.0 42.3 63.5



#10  
 Methyl Iodide  
 Concen: 3.749 ug/l  
 RT: 4.339 min Scan# 417  
 Delta R.T. -0.012 min  
 Lab File: VN073384.D  
 Acq: 08 Jul 2022 10:42

Tgt Ion:142 Resp: 74  
 Ion Ratio Lower Upper  
 142 100  
 127 73.0 31.3 46.9#  
 141 0.0 11.2 16.8#

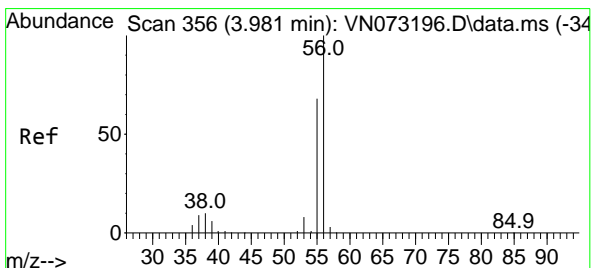
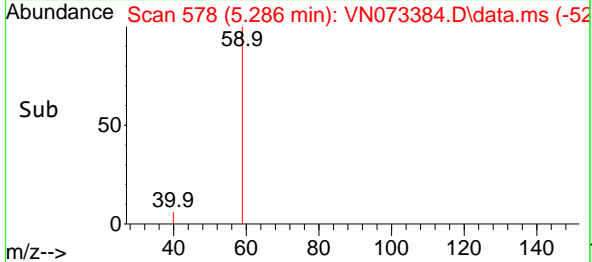
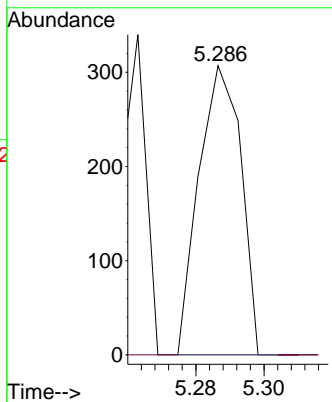
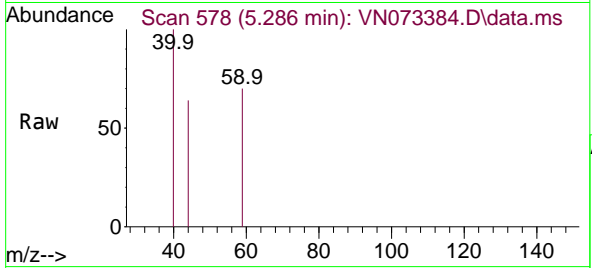




#11  
 Tert butyl alcohol  
 Concen: 0.234 ug/l  
 RT: 5.286 min Scan# 51  
 Delta R.T. 0.005 min  
 Lab File: VN073384.D  
 Acq: 08 Jul 2022 10:42

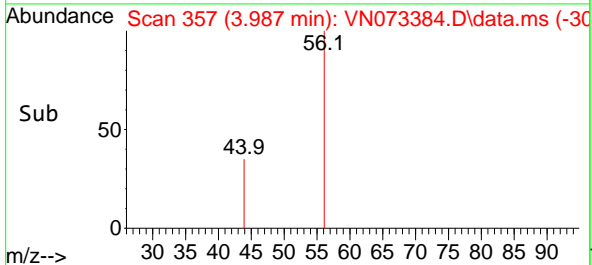
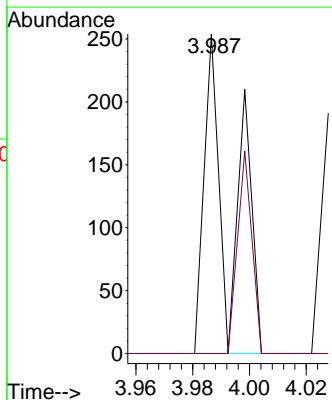
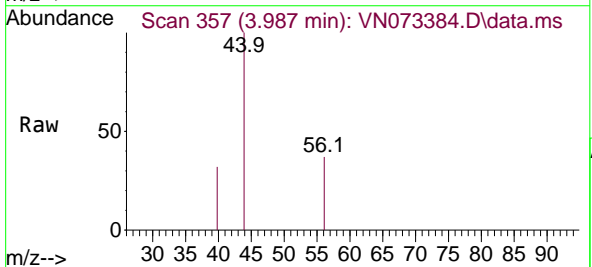
Instrument :  
 MSVOA\_N  
 ClientSampleId :  
 VN0708MBL01

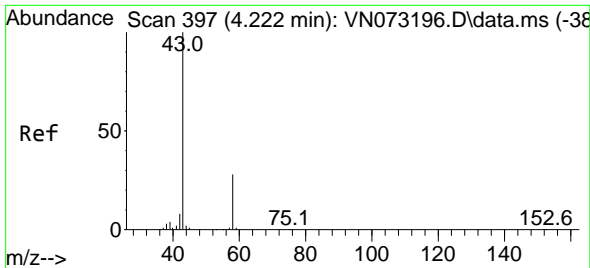
Tgt Ion: 59 Resp: 263  
 Ion Ratio Lower Upper  
 59 100  
 57 0.0 8.3 12.5#



#13  
 Acrolein  
 Concen: 0.231 ug/l  
 RT: 3.987 min Scan# 357  
 Delta R.T. 0.006 min  
 Lab File: VN073384.D  
 Acq: 08 Jul 2022 10:42

Tgt Ion: 56 Resp: 164  
 Ion Ratio Lower Upper  
 56 100  
 55 34.8 54.8 82.2#

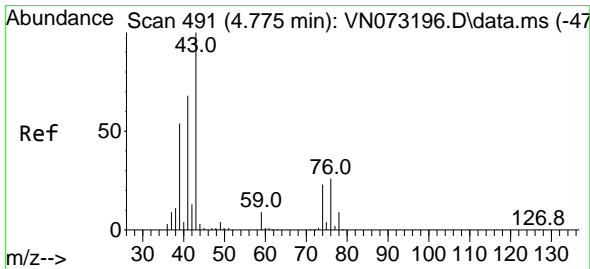
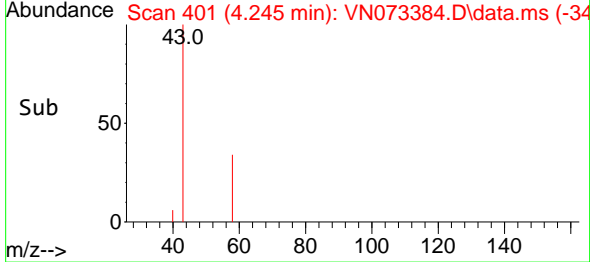
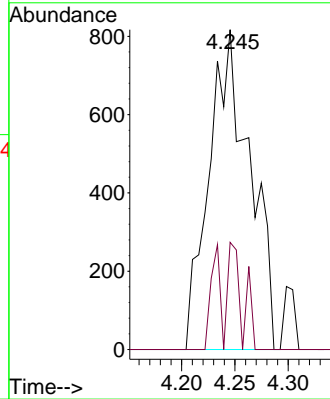
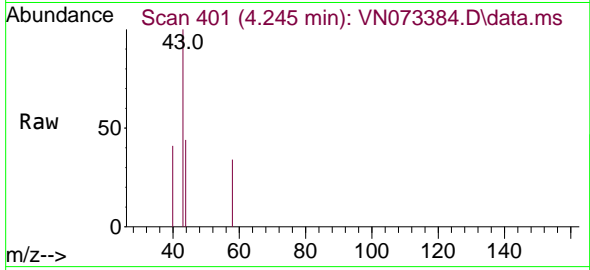




#16  
 Acetone  
 Concen: 0.836 ug/l  
 RT: 4.245 min Scan# 401  
 Delta R.T. 0.023 min  
 Lab File: VN073384.D  
 Acq: 08 Jul 2022 10:42

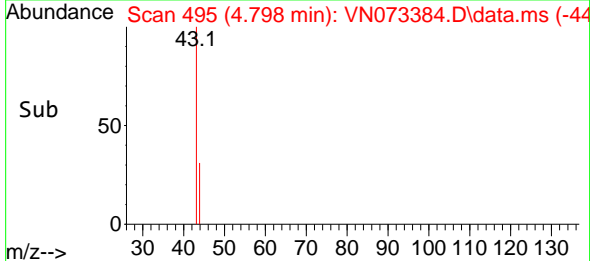
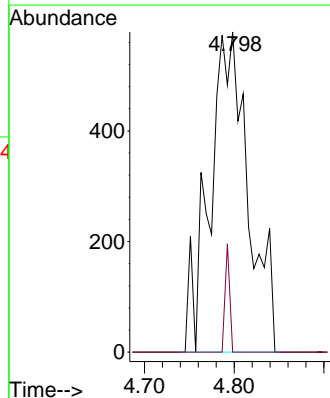
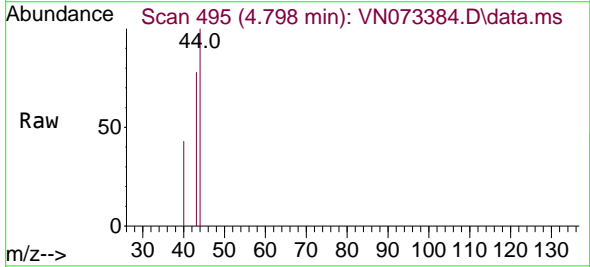
Instrument : MSVOA\_N  
 ClientSampleId : VN0708MBL01

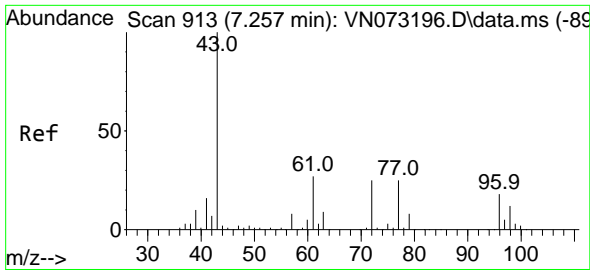
Tgt Ion: 43 Resp: 2177  
 Ion Ratio Lower Upper  
 43 100  
 58 33.5 26.0 39.0



#18  
 Methyl Acetate  
 Concen: 0.238 ug/l  
 RT: 4.798 min Scan# 495  
 Delta R.T. 0.023 min  
 Lab File: VN073384.D  
 Acq: 08 Jul 2022 10:42

Tgt Ion: 43 Resp: 1734  
 Ion Ratio Lower Upper  
 43 100  
 74 4.0 21.6 32.4#

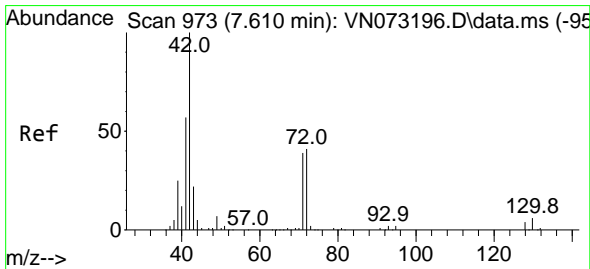
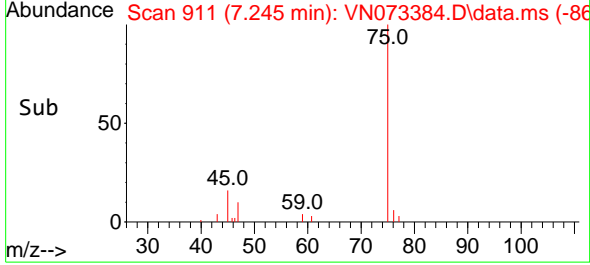
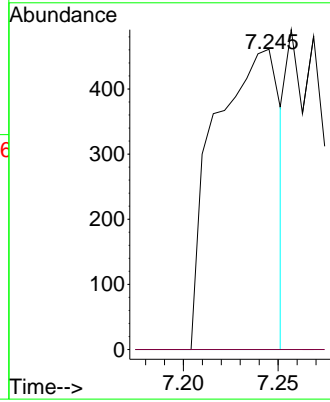
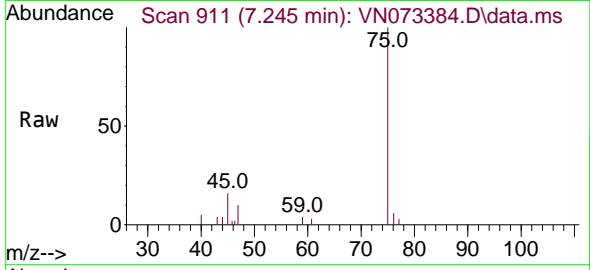




#25  
 2-Butanone  
 Concen: 0.265 ug/l  
 RT: 7.245 min Scan# 911  
 Delta R.T. -0.012 min  
 Lab File: VN073384.D  
 Acq: 08 Jul 2022 10:42

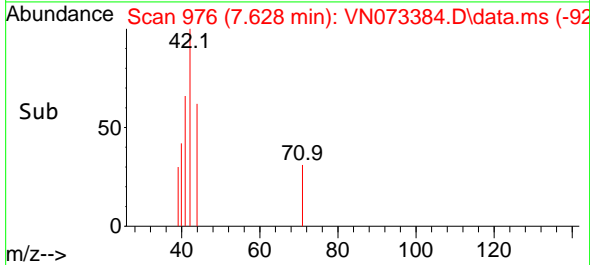
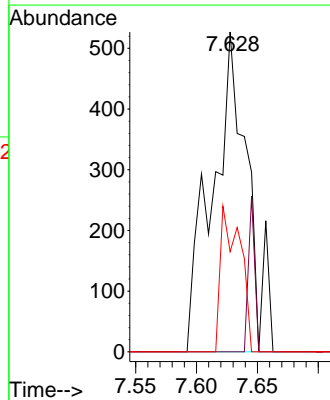
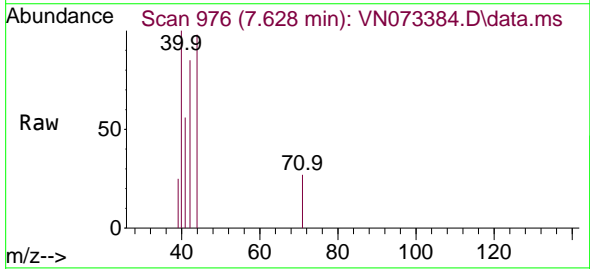
Instrument :  
 MSVOA\_N  
 ClientSampleId :  
 VN0708MBL01

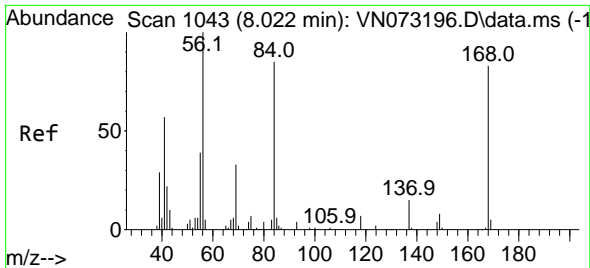
Tgt Ion: 43 Resp: 1101  
 Ion Ratio Lower Upper  
 43 100  
 72 0.0 23.7 35.5#



#29  
 Tetrahydrofuran  
 Concen: 0.374 ug/l  
 RT: 7.628 min Scan# 976  
 Delta R.T. 0.018 min  
 Lab File: VN073384.D  
 Acq: 08 Jul 2022 10:42

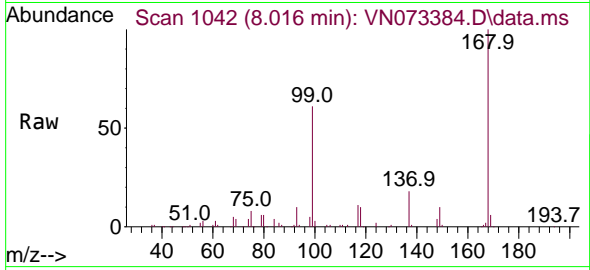
Tgt Ion: 42 Resp: 1061  
 Ion Ratio Lower Upper  
 42 100  
 72 0.0 39.7 59.5#  
 71 25.4 36.6 55.0#





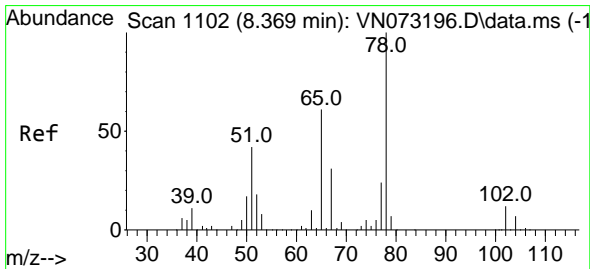
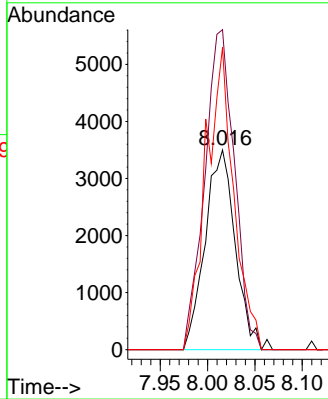
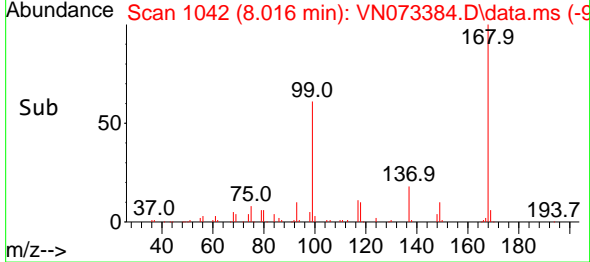
#31  
 Cyclohexane  
 Concen: 1.021 ug/l  
 RT: 8.016 min Scan# 1042  
 Delta R.T. -0.006 min  
 Lab File: VN073384.D  
 Acq: 08 Jul 2022 10:42

Instrument : MSVOA\_N  
 ClientSampleId : VN0708MBL01

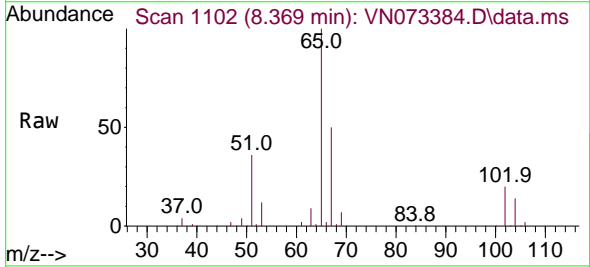


Tgt Ion: 56 Resp: 7762

Ion	Ratio	Lower	Upper
56	100		
69	160.2	27.8	41.8#
84	151.3	76.9	115.3#

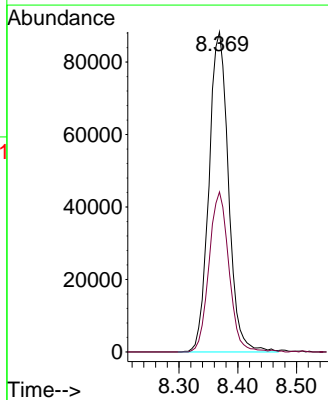
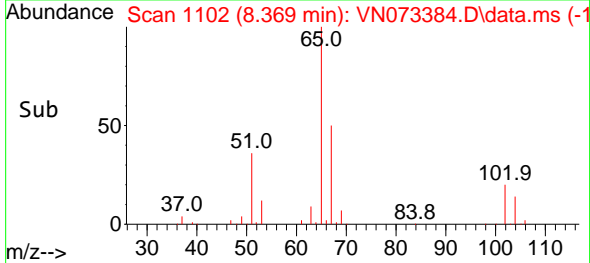


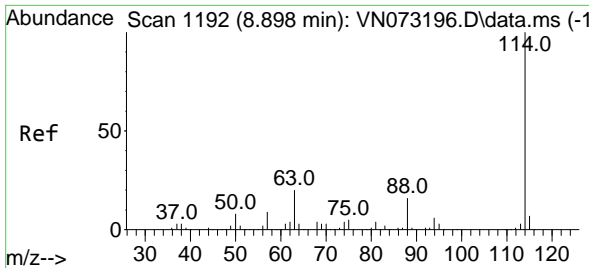
#33  
 1,2-Dichloroethane-d4  
 Concen: 43.886 ug/l  
 RT: 8.369 min Scan# 1102  
 Delta R.T. -0.000 min  
 Lab File: VN073384.D  
 Acq: 08 Jul 2022 10:42



Tgt Ion: 65 Resp: 203690

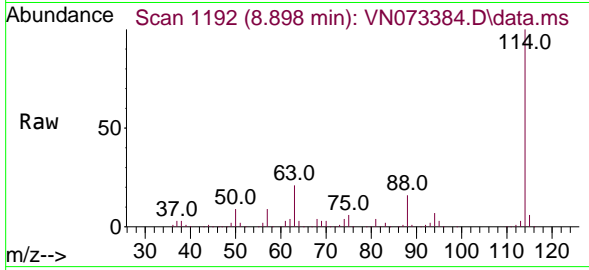
Ion	Ratio	Lower	Upper
65	100		
67	50.8	0.0	104.8



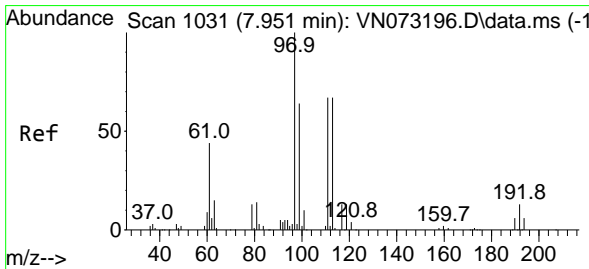
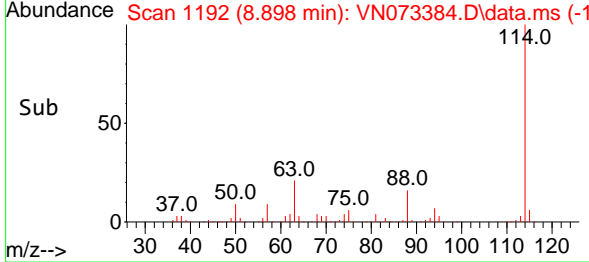
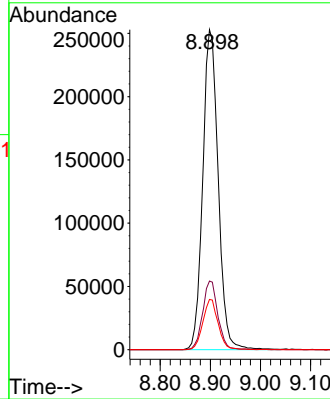


#34  
 1,4-Difluorobenzene  
 Concen: 50.000 ug/l  
 RT: 8.898 min Scan# 1192  
 Delta R.T. 0.000 min  
 Lab File: VN073384.D  
 Acq: 08 Jul 2022 10:42

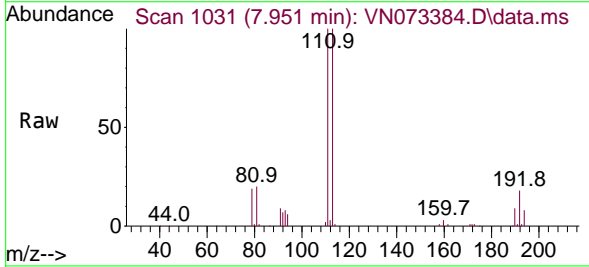
Instrument : MSVOA\_N  
 ClientSampleId : VN0708MBL01



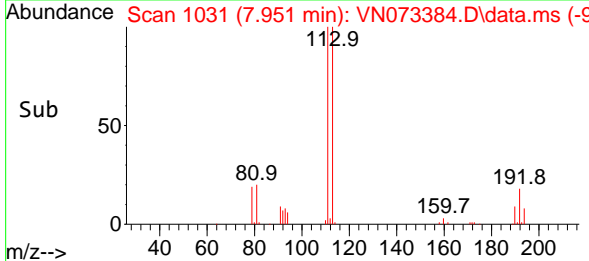
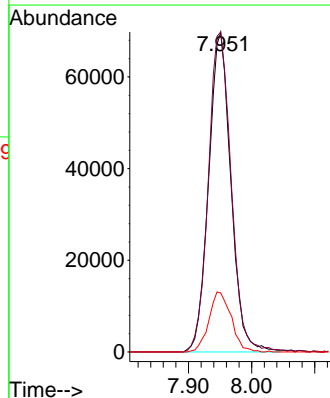
Tgt Ion:114 Resp: 541076  
 Ion Ratio Lower Upper  
 114 100  
 63 21.5 0.0 40.0  
 88 15.7 0.0 32.6



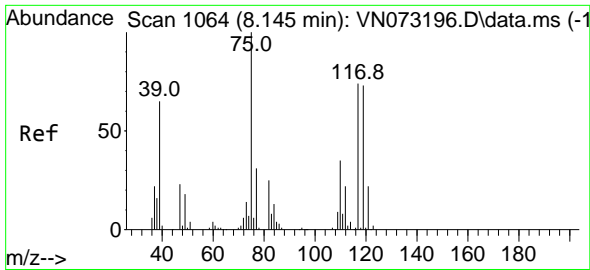
#35  
 Dibromofluoromethane  
 Concen: 47.345 ug/l  
 RT: 7.951 min Scan# 1031  
 Delta R.T. 0.000 min  
 Lab File: VN073384.D  
 Acq: 08 Jul 2022 10:42



Tgt Ion:113 Resp: 170437  
 Ion Ratio Lower Upper  
 113 100  
 111 102.8 81.4 122.0  
 192 18.8 17.0 25.6

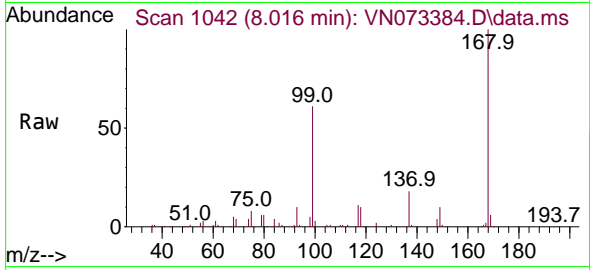




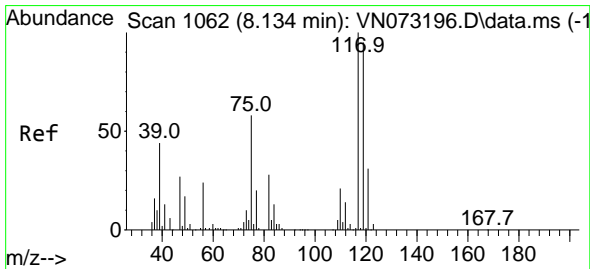
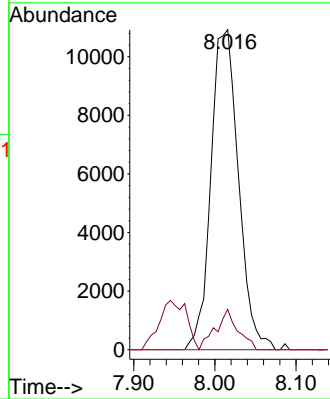
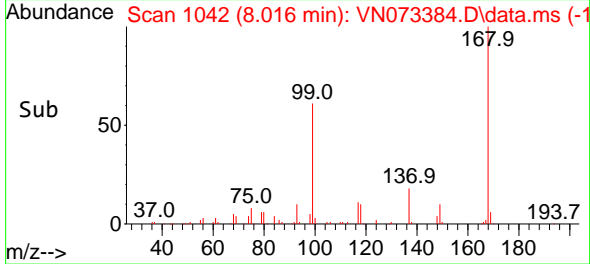


#36  
 1,1-Dichloropropene  
 Concen: 4.664 ug/l  
 RT: 8.016 min Scan# 1042  
 Delta R.T. -0.129 min  
 Lab File: VN073384.D  
 Acq: 08 Jul 2022 10:42

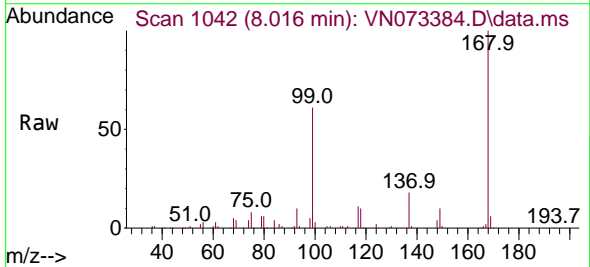
Instrument : MSVOA\_N  
 ClientSampleId : VN0708MBL01



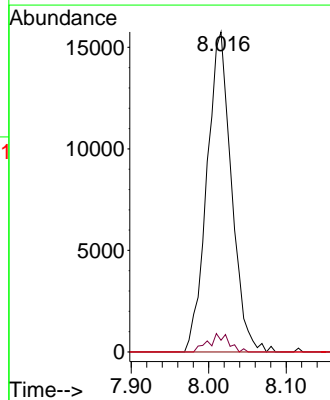
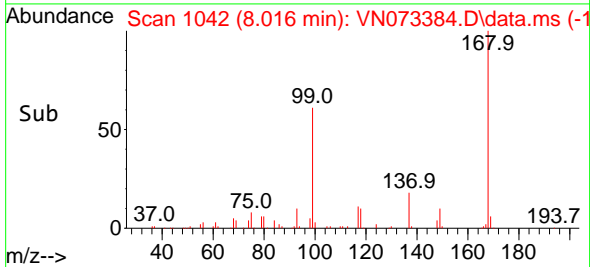
Tgt Ion: 75 Resp: 25833  
 Ion Ratio Lower Upper  
 75 100  
 110 10.1 18.3 54.8#  
 77 0.0 25.1 37.7#

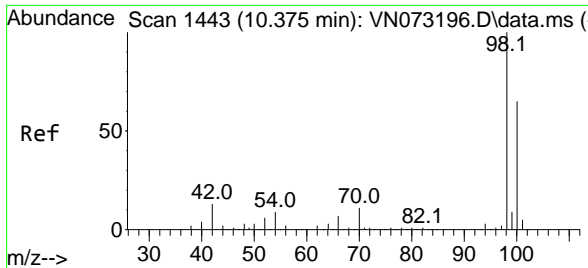


#38  
 Carbon Tetrachloride  
 Concen: 6.051 ug/l  
 RT: 8.016 min Scan# 1042  
 Delta R.T. -0.118 min  
 Lab File: VN073384.D  
 Acq: 08 Jul 2022 10:42



Tgt Ion: 117 Resp: 34663  
 Ion Ratio Lower Upper  
 117 100  
 119 3.7 75.8 113.8#  
 121 0.0 24.6 37.0#





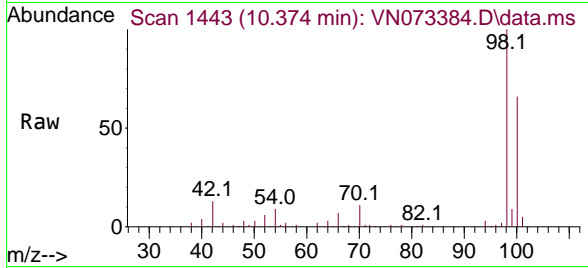
#50  
 Toluene-d8  
 Concen: 44.403 ug/l  
 RT: 10.374 min Scan# 1427  
 Delta R.T. -0.001 min  
 Lab File: VN073384.D  
 Acq: 08 Jul 2022 10:42

Instrument :

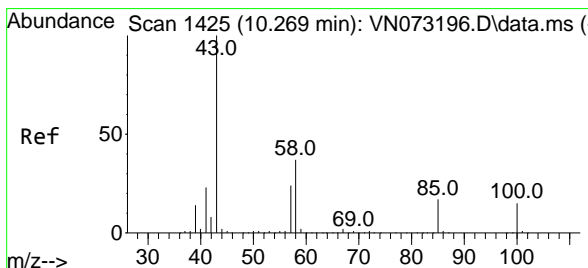
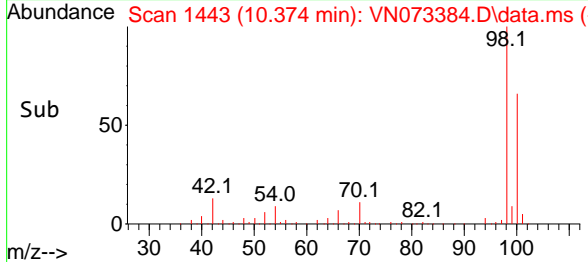
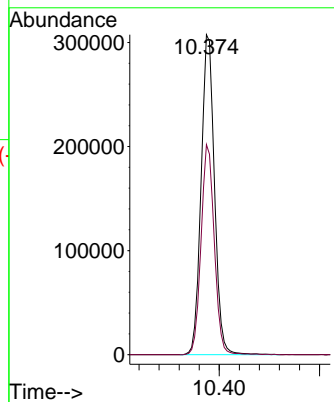
MSVOA\_N

ClientSampleId :

VN0708MBL01

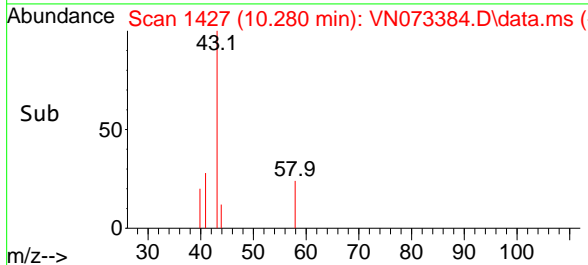
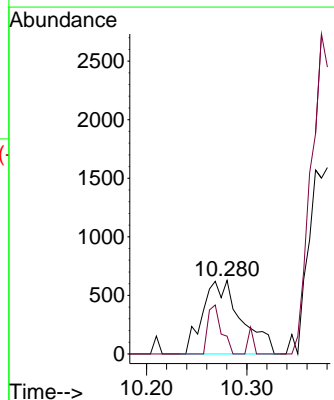
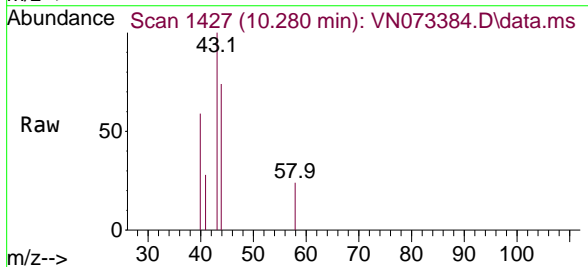


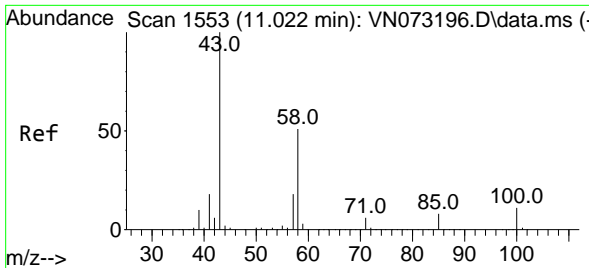
Tgt Ion: 98 Resp: 567713  
 Ion Ratio Lower Upper  
 98 100  
 100 65.1 52.6 78.8



#51  
 4-Methyl-2-Pentanone  
 Concen: 0.221 ug/l  
 RT: 10.280 min Scan# 1427  
 Delta R.T. 0.011 min  
 Lab File: VN073384.D  
 Acq: 08 Jul 2022 10:42

Tgt Ion: 43 Resp: 1682  
 Ion Ratio Lower Upper  
 43 100  
 58 23.4 34.1 51.1#

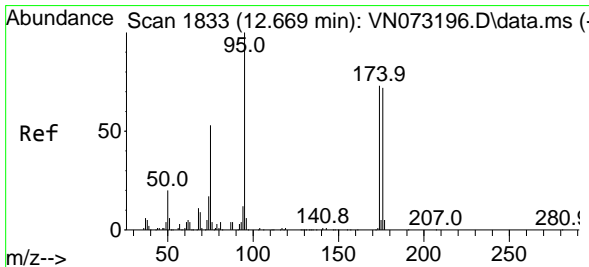
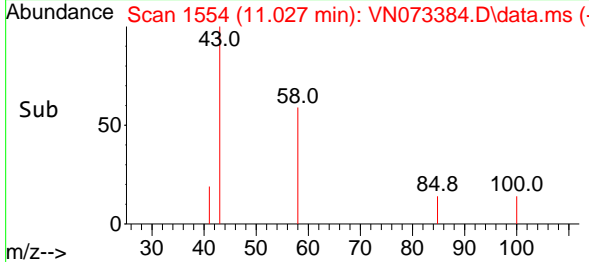
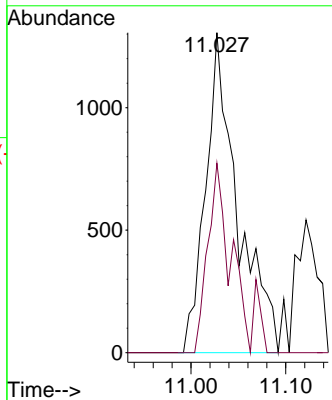
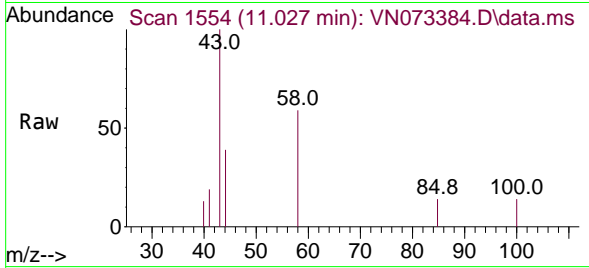




#59  
 2-Hexanone  
 Concen: 0.527 ug/l  
 RT: 11.027 min Scan# 1554  
 Delta R.T. 0.005 min  
 Lab File: VN073384.D  
 Acq: 08 Jul 2022 10:42

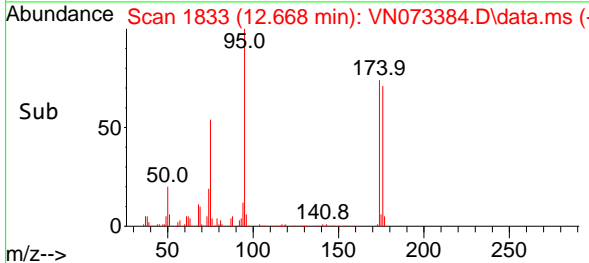
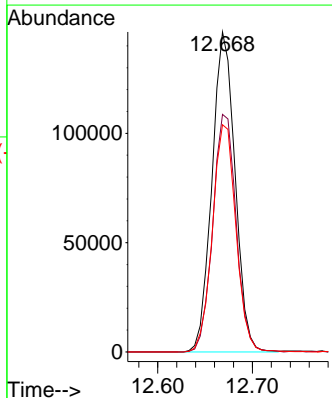
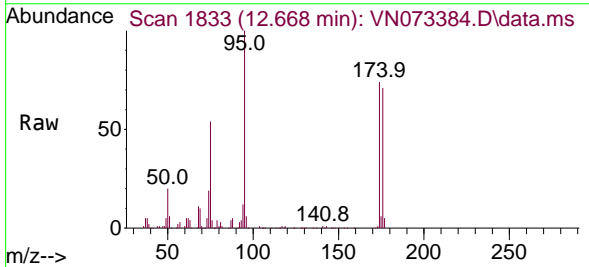
Instrument : MSVOA\_N  
 ClientSampleId : VN0708MBL01

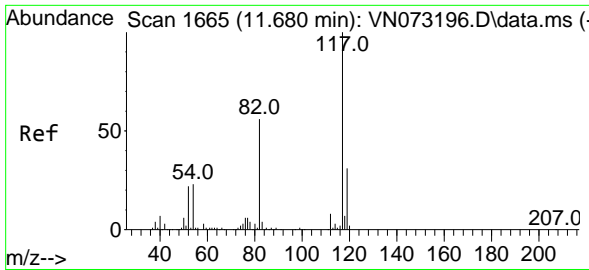
Tgt Ion	Resp	Ion Ratio	Lower	Upper
43	3067	100		
58		41.9	29.7	89.1



#62  
 4-Bromofluorobenzene  
 Concen: 50.418 ug/l  
 RT: 12.668 min Scan# 1833  
 Delta R.T. -0.001 min  
 Lab File: VN073384.D  
 Acq: 08 Jul 2022 10:42

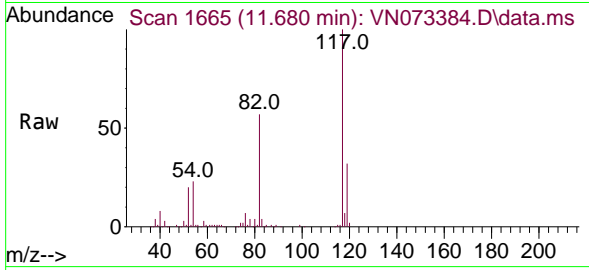
Tgt Ion	Resp	Ion Ratio	Lower	Upper
95	247726	100		
174		75.2	0.0	167.6
176		72.6	0.0	163.4



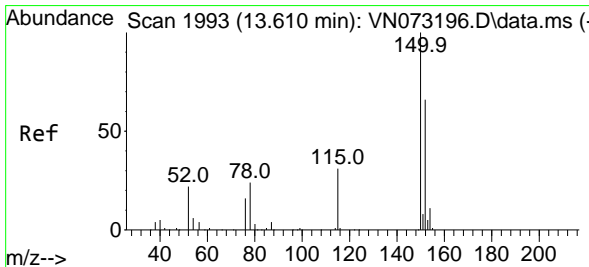
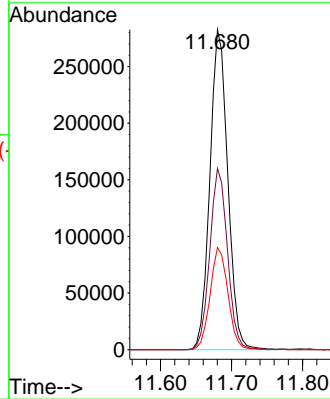
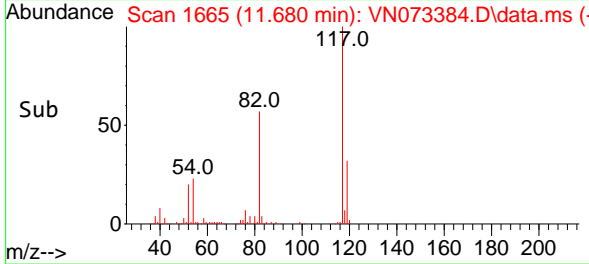


#63  
 Chlorobenzene-d5  
 Concen: 50.000 ug/l  
 RT: 11.680 min Scan# 11665  
 Delta R.T. 0.000 min  
 Lab File: VN073384.D  
 Acq: 08 Jul 2022 10:42

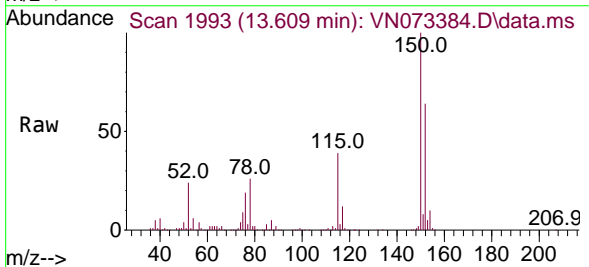
Instrument :  
 MSVOA\_N  
 ClientSampleId :  
 VN0708MBL01



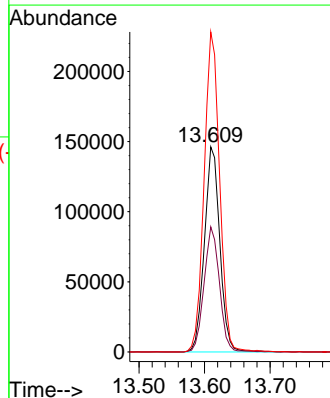
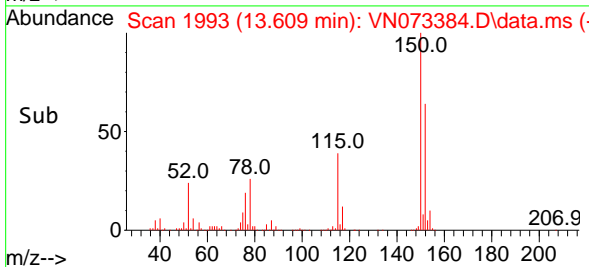
Tgt Ion:117 Resp: 494025  
 Ion Ratio Lower Upper  
 117 100  
 82 56.7 44.2 66.2  
 119 31.9 25.4 38.0

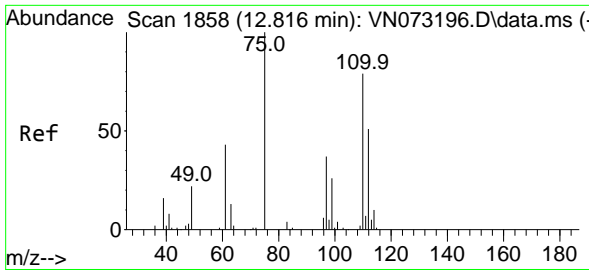


#72  
 1,4-Dichlorobenzene-d4  
 Concen: 50.000 ug/l  
 RT: 13.609 min Scan# 1993  
 Delta R.T. -0.001 min  
 Lab File: VN073384.D  
 Acq: 08 Jul 2022 10:42



Tgt Ion:152 Resp: 239754  
 Ion Ratio Lower Upper  
 152 100  
 115 60.9 28.9 86.7  
 150 156.8 0.0 356.2

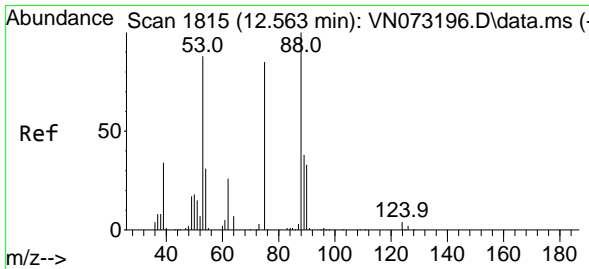
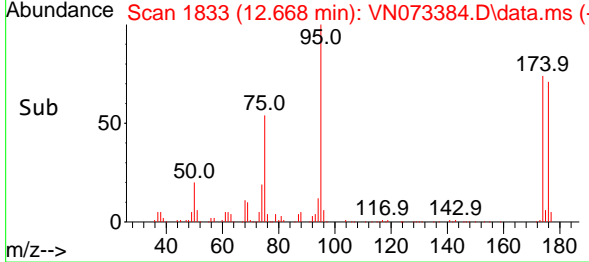
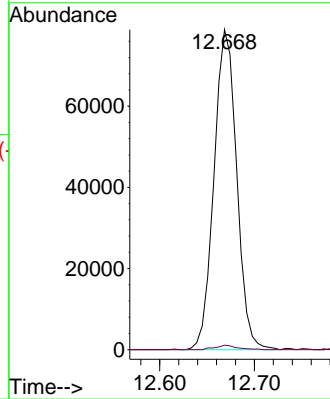
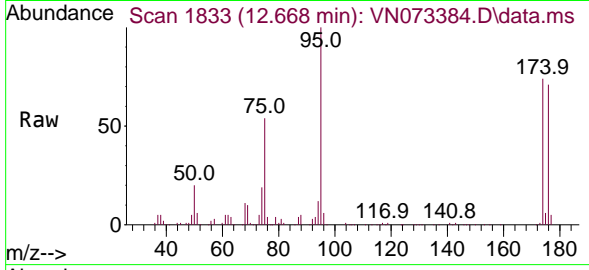




#76  
 1,2,3-Trichloropropane  
 Concen: 20.961 ug/l  
 RT: 12.668 min Scan# 1833  
 Delta R.T. -0.148 min  
 Lab File: VN073384.D  
 Acq: 08 Jul 2022 10:42

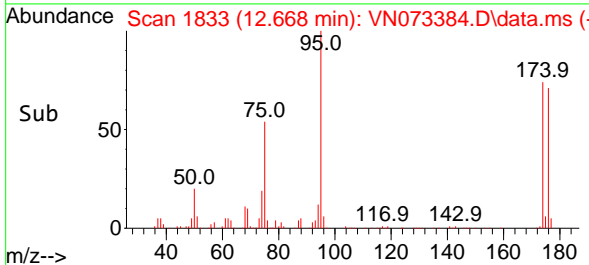
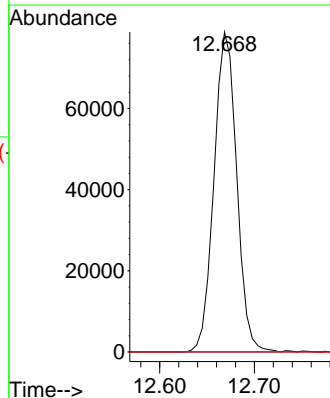
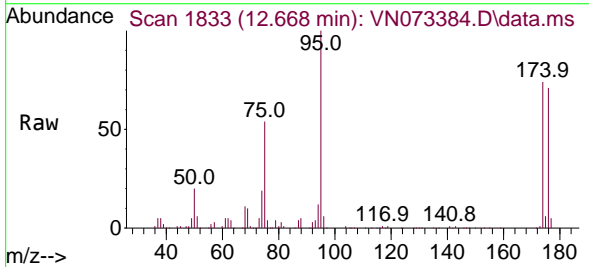
Instrument : MSVOA\_N  
 ClientSampleId : VN0708MBL01

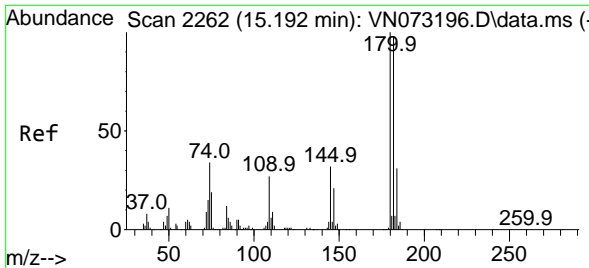
Tgt Ion: 75 Resp: 131404  
 Ion Ratio Lower Upper  
 75 100  
 77 1.4 98.5 295.5#



#81  
 trans-1,4-Dichloro-2-butene  
 Concen: 57.484 ug/l  
 RT: 12.668 min Scan# 1833  
 Delta R.T. 0.105 min  
 Lab File: VN073384.D  
 Acq: 08 Jul 2022 10:42

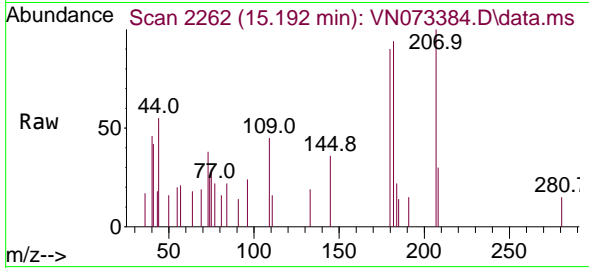
Tgt Ion: 75 Resp: 131404  
 Ion Ratio Lower Upper  
 75 100  
 53 0.0 78.0 117.0#  
 89 0.0 37.2 55.8#





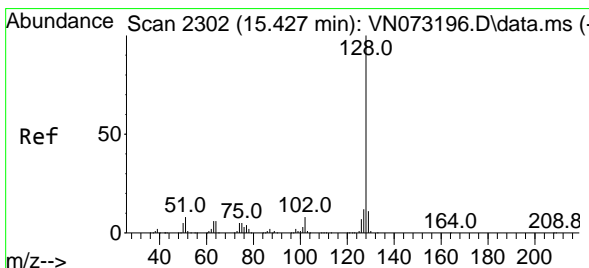
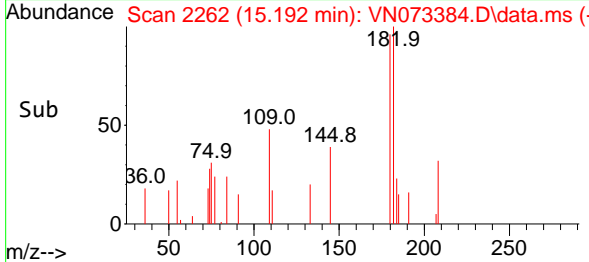
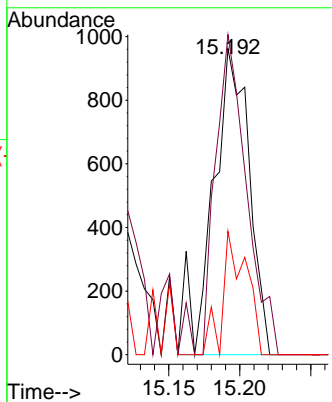
#93  
 1,2,4-Trichlorobenzene  
 Concen: 0.376 ug/l  
 RT: 15.192 min Scan# 211  
 Delta R.T. -0.000 min  
 Lab File: VN073384.D  
 Acq: 08 Jul 2022 10:42

Instrument :  
 MSVOA\_N  
 ClientSampleId :  
 VN0708MBL01

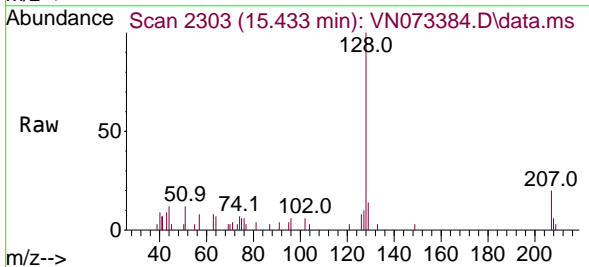


Tgt Ion:180 Resp: 1722

Ion	Ratio	Lower	Upper
180	100		
182	88.5	47.5	142.5
145	26.5	14.5	43.5

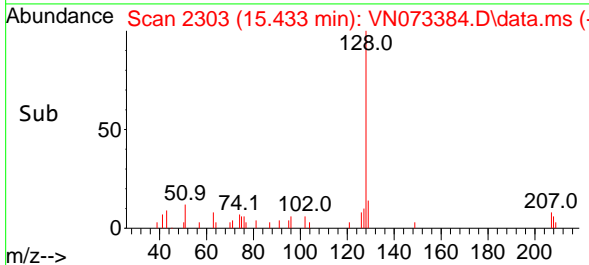
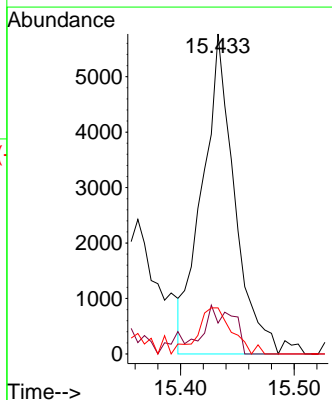


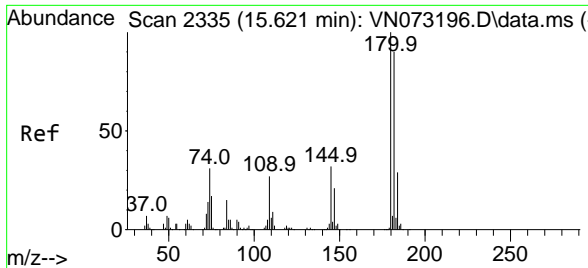
#95  
 Naphthalene  
 Concen: 0.613 ug/l  
 RT: 15.433 min Scan# 2303  
 Delta R.T. 0.006 min  
 Lab File: VN073384.D  
 Acq: 08 Jul 2022 10:42



Tgt Ion:128 Resp: 11319

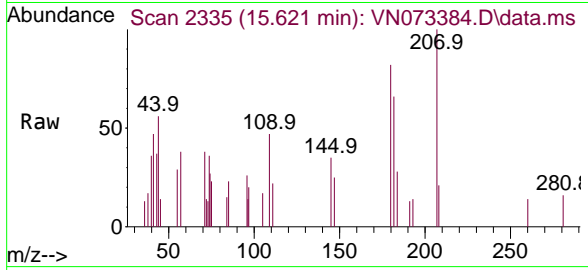
Ion	Ratio	Lower	Upper
128	100		
127	3.5	10.3	15.5#
129	15.5	8.6	13.0#





#96  
 1,2,3-Trichlorobenzene  
 Concen: 0.433 ug/l  
 RT: 15.621 min Scan# 21  
 Delta R.T. 0.000 min  
 Lab File: VN073384.D  
 Acq: 08 Jul 2022 10:42

Instrument :  
 MSVOA\_N  
 ClientSampleId :  
 VN0708MBL01



Tgt Ion:180 Resp: 2044

Ion	Ratio	Lower	Upper
180	100		
182	87.2	47.8	143.3
145	30.5	15.5	46.5

