

Data Path : Z:\voasrv\HPCHEM1\MSVOA\_N\Data\VN071124\  
 Data File : VN082870.D  
 Acq On : 11 Jul 2024 12:42  
 Operator : JC\MD  
 Sample : P3206-02 50X  
 Misc : 5.0mL/MSVOA\_N/WATER  
 ALS Vial : 9 Sample Multiplier: 1

Instrument :  
 MSVOA\_N  
 ClientSampleId :  
 626-A

Integration Parameters: RTEINT.P  
 Integrator: RTE  
 Smoothing : ON Filtering: 5  
 Sampling : 1 Min Area: 3 % of largest Peak  
 Start Thrs: 0.2 Max Peaks: 100  
 Stop Thrs : 0 Peak Location: TOP

If leading or trailing edge < 100 prefer < Baseline drop else tangent >  
 Peak separation: 5

Method : Z:\voasrv\HPCHEM1\MSVOA\_N\methods\82N070824W.M  
 Title : SW846 8260

Signal : TIC: VN082870.D\data.ms

peak #	R.T. min	first scan	max scan	last scan	PK TY	peak height	corr. area	corr. % max.	% of total
1	2.665	115	121	128	rBV	19840	34724	4.82%	0.744%
2	4.289	385	397	410	rBV	37960	108476	15.06%	2.325%
3	6.730	804	812	824	rBV4	10289	32362	4.49%	0.694%
4	8.165	1047	1056	1061	rBV	102580	246936	34.27%	5.293%
5	8.224	1061	1066	1075	rVB	182002	394016	54.69%	8.446%
6	8.582	1117	1127	1137	rBV	106434	237825	33.01%	5.098%
7	9.100	1207	1215	1230	rVB	290970	606208	84.14%	12.994%
8	9.341	1248	1256	1262	rBV2	14208	26681	3.70%	0.572%
9	10.571	1456	1465	1477	rBV	382909	710851	98.66%	15.238%
10	10.806	1498	1505	1512	rBV	127503	220849	30.65%	4.734%
11	10.947	1523	1529	1536	rVB	81741	135866	18.86%	2.912%
12	11.218	1567	1575	1589	rBV	26183	66908	9.29%	1.434%
13	11.865	1676	1685	1697	rBV	403117	720495	100.00%	15.444%
14	12.853	1845	1853	1863	rBV	288360	492788	68.40%	10.563%
15	13.794	2005	2013	2022	rBV	374939	630139	87.46%	13.507%

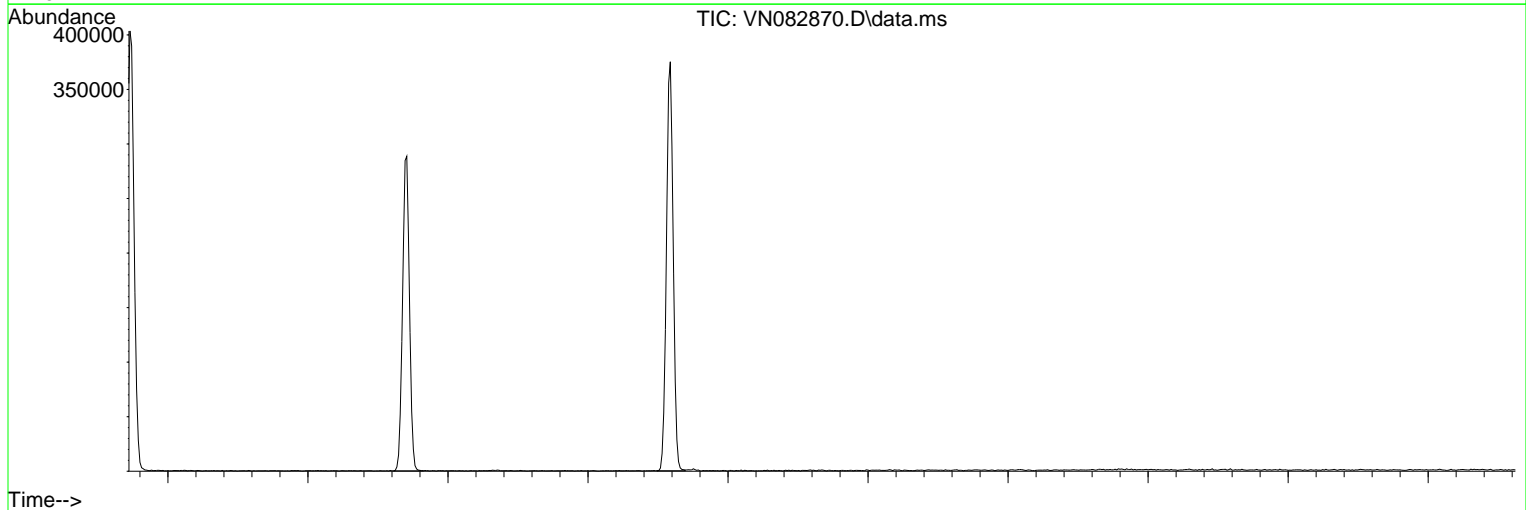
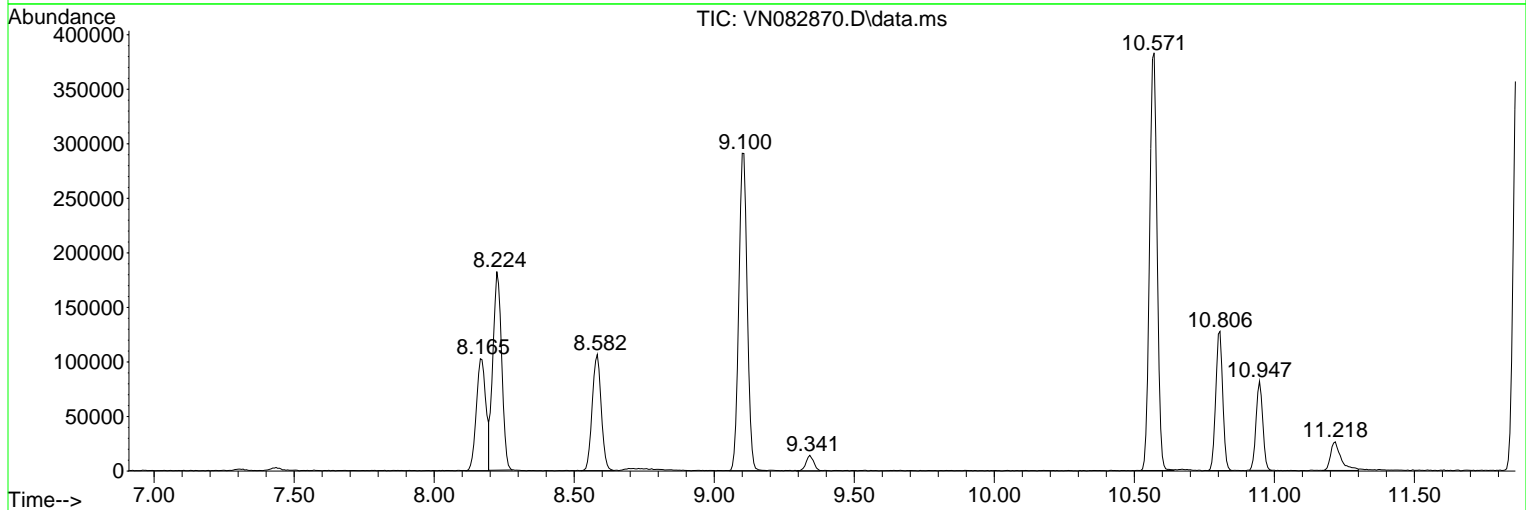
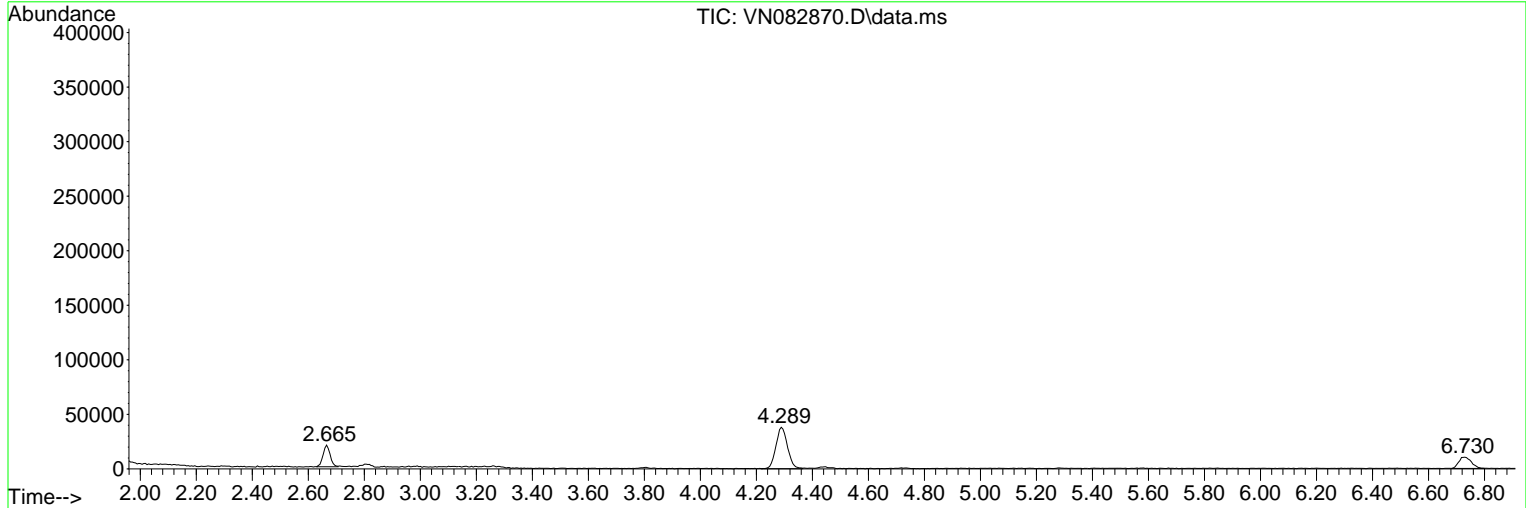
Sum of corrected areas: 4665124

Data Path : Z:\voasrv\HPCHEM1\MSVOA\_N\Data\VN071124\  
Data File : VN082870.D  
Acq On : 11 Jul 2024 12:42  
Operator : JC\MD  
Sample : P3206-02 50X  
Misc : 5.0mL/MSVOA\_N/WATER  
ALS Vial : 9 Sample Multiplier: 1

Instrument :  
MSVOA\_N  
ClientSampleId :  
626-A

Quant Method : Z:\voasrv\HPCHEM1\MSVOA\_N\methods\82N070824W.M  
Quant Title : SW846 8260

TIC Library : C:\Database\NIST20.L  
TIC Integration Parameters: LSCINT.P



Data Path : Z:\voasrv\HPCHEM1\MSVOA\_N\Data\VN071124\  
 Data File : VN082870.D  
 Acq On : 11 Jul 2024 12:42  
 Operator : JC\MD  
 Sample : P3206-02 50X  
 Misc : 5.0mL/MSVOA\_N/WATER  
 ALS Vial : 9 Sample Multiplier: 1

Instrument :  
 MSVOA\_N  
 ClientSampleId :  
 626-A

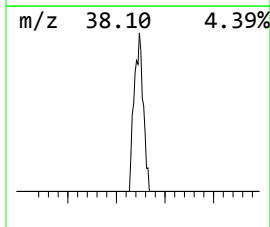
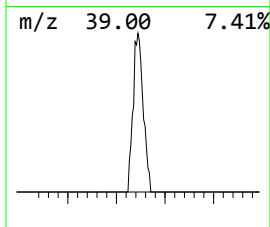
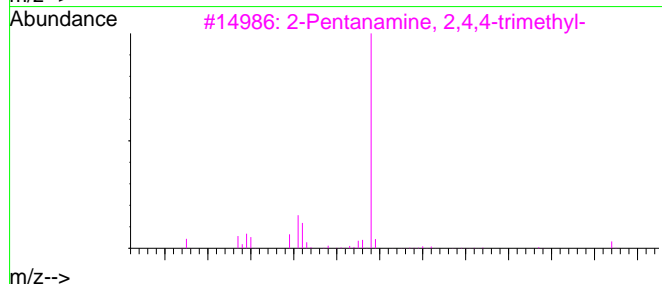
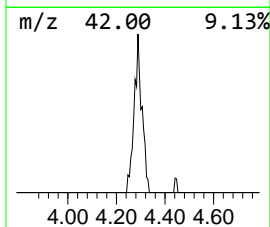
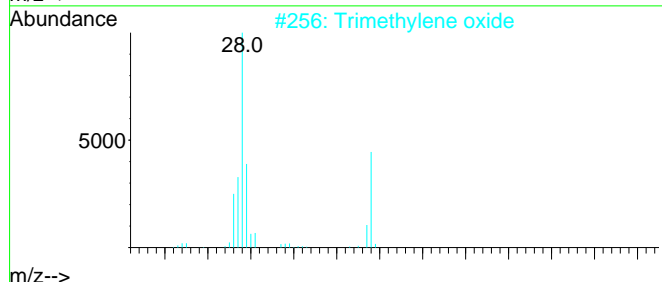
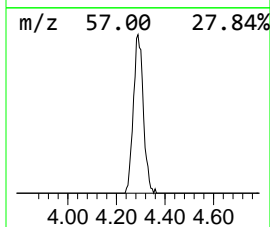
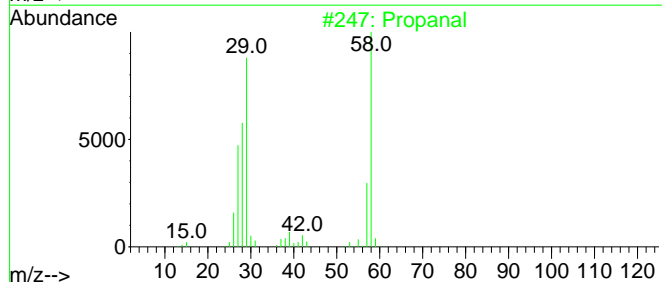
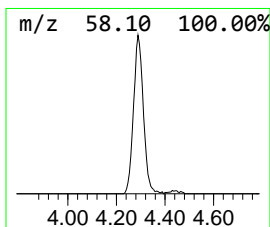
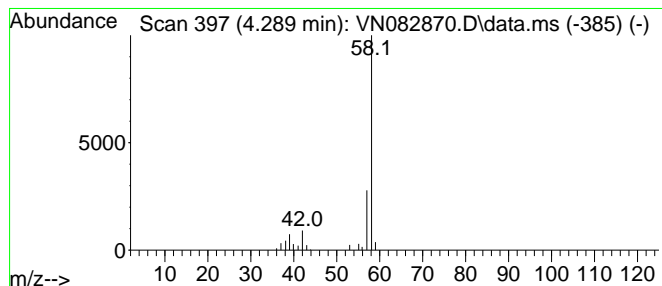
Quant Method : Z:\voasrv\HPCHEM1\MSVOA\_N\methods\82N070824W.M  
 Quant Title : SW846 8260

TIC Library : C:\Database\NIST20.L  
 TIC Integration Parameters: LSCINT.P

\*\*\*\*\*  
 Peak Number 1 Propanal Concentration Rank 2

R.T.	EstConc	Area	Relative to ISTD	R.T.
4.289	13.77 ug/l	108476	Pentafluorobenzene	8.224

Hit# of 5	Tentative ID	MW	MolForm	CAS#	Qual
1	Propanal	58	C3H6O	000123-38-6	78
2	Trimethylene oxide	58	C3H6O	000503-30-0	9
3	2-Pentanamine, 2,4,4-trimethyl-	129	C8H19N	000107-45-9	9
4	.alpha.-Pinene, 10-(dimethylamin...	193	C13H23N	015063-97-5	9
5	Glycinamide, N,N,N(2),N(2)-tetra...	130	C6H14N2O	1000452-64-2	9



Data Path : Z:\voasrv\HPCHEM1\MSVOA\_N\Data\VN071124\  
 Data File : VN082870.D  
 Acq On : 11 Jul 2024 12:42  
 Operator : JC\MD  
 Sample : P3206-02 50X  
 Misc : 5.0mL/MSVOA\_N/WATER  
 ALS Vial : 9 Sample Multiplier: 1

Instrument :  
 MSVOA\_N  
 ClientSampleId :  
 626-A

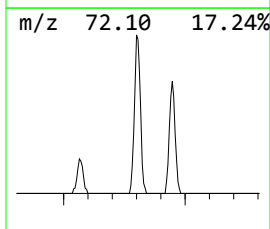
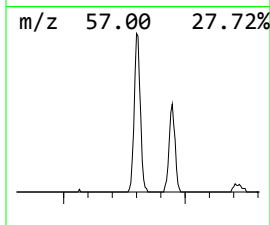
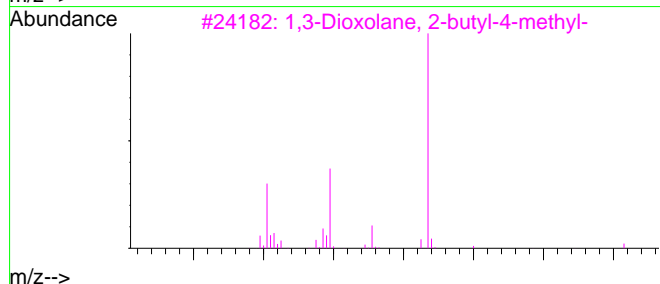
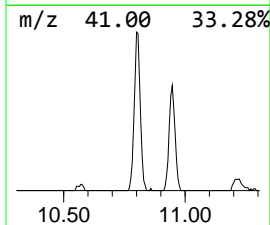
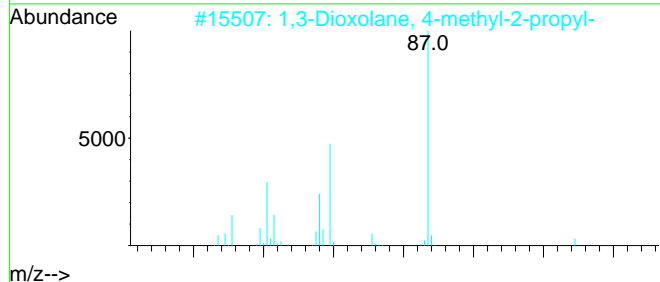
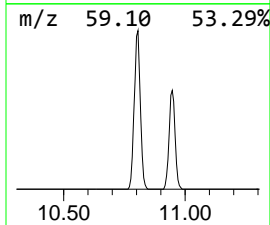
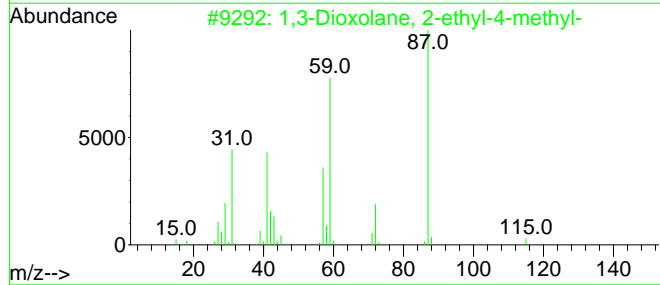
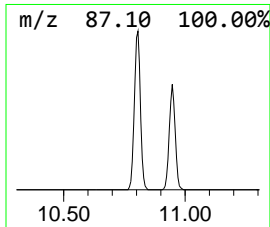
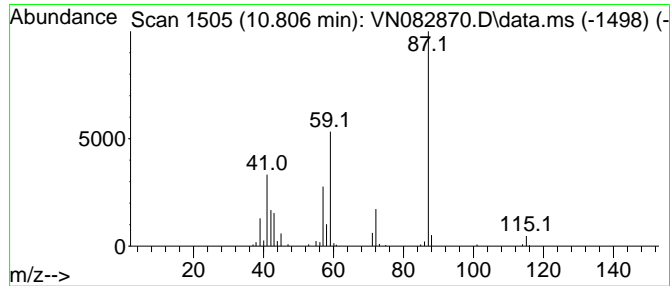
Quant Method : Z:\voasrv\HPCHEM1\MSVOA\_N\methods\82N070824W.M  
 Quant Title : SW846 8260

TIC Library : C:\Database\NIST20.L  
 TIC Integration Parameters: LSCINT.P

\*\*\*\*\*  
 Peak Number 2 1,3-Dioxolane, 2-ethyl-4-me... Concentration Rank 1

R.T.	EstConc	Area	Relative to ISTD	R.T.
10.806	15.33 ug/l	220849	Chlorobenzene-d5	11.865

Hit#	of	Tentative ID	MW	MolForm	CAS#	Qual
1	5	1,3-Dioxolane, 2-ethyl-4-methyl-	116	C6H12O2	004359-46-0	90
2		1,3-Dioxolane, 4-methyl-2-propyl-	130	C7H14O2	004352-99-2	59
3		1,3-Dioxolane, 2-butyl-4-methyl-	144	C8H16O2	074094-60-3	56
4		2-Propanone, O-methylxime	87	C4H9NO	003376-35-0	52
5		Thiocyanic acid, ethyl ester	87	C3H5NS	000542-90-5	50



Data Path : Z:\voasrv\HPCHEM1\MSVOA\_N\Data\VN071124\  
 Data File : VN082870.D  
 Acq On : 11 Jul 2024 12:42  
 Operator : JC\MD  
 Sample : P3206-02 50X  
 Misc : 5.0mL/MSVOA\_N/WATER  
 ALS Vial : 9 Sample Multiplier: 1

Instrument :  
 MSVOA\_N  
 ClientSampleId :  
 626-A

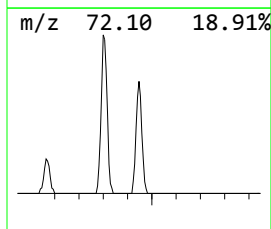
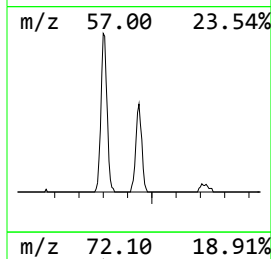
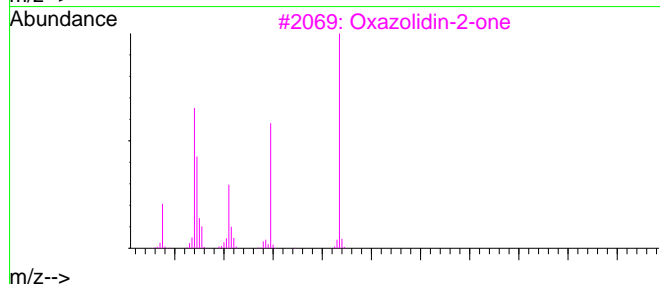
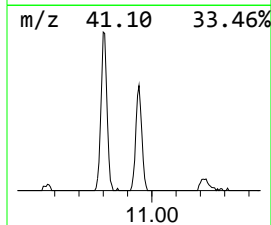
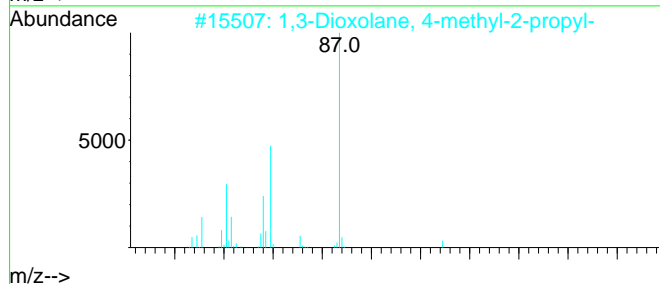
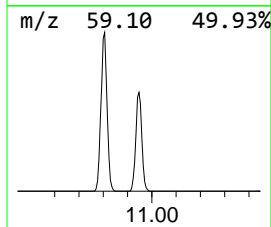
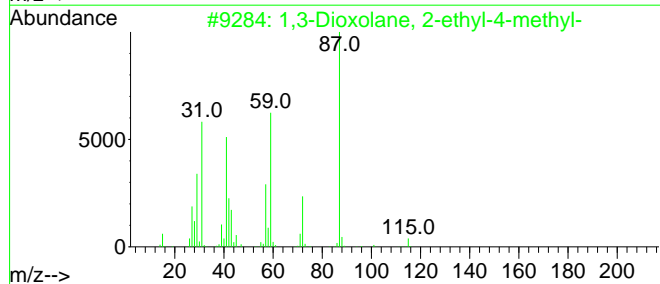
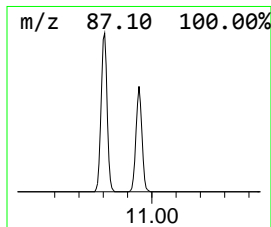
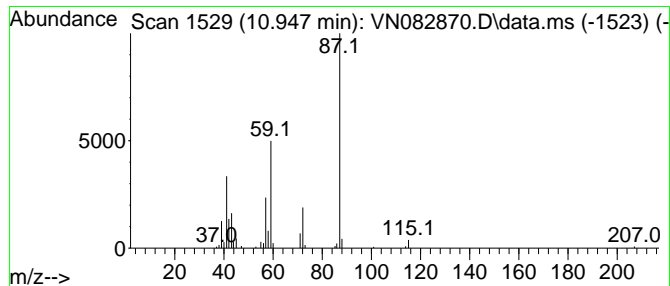
Quant Method : Z:\voasrv\HPCHEM1\MSVOA\_N\methods\82N070824W.M  
 Quant Title : SW846 8260

TIC Library : C:\Database\NIST20.L  
 TIC Integration Parameters: LSCINT.P

\*\*\*\*\*  
 Peak Number 3 1,3-Dioxolane, 4-methyl-2-p... Concentration Rank 3

R.T.	EstConc	Area	Relative to ISTD	R.T.
10.947	9.43 ug/l	135866	Chlorobenzene-d5	11.865

Hit#	of 5	Tentative ID	MW	MolForm	CAS#	Qual
1		1,3-Dioxolane, 2-ethyl-4-methyl-	116	C6H12O2	004359-46-0	83
2		1,3-Dioxolane, 4-methyl-2-propyl-	130	C7H14O2	004352-99-2	64
3		Oxazolidin-2-one	87	C3H5NO2	000497-25-6	64
4		Acetamide, N-ethyl-	87	C4H9NO	000625-50-3	53
5		1,3-Dioxolane, 4-methyl-2-(2-met...	144	C8H16O2	018433-93-7	50



Data Path : Z:\voasrv\HPCHEM1\MSVOA\_N\Data\VN071124\  
Data File : VN082870.D  
Acq On : 11 Jul 2024 12:42  
Operator : JC\MD  
Sample : P3206-02 50X  
Misc : 5.0mL/MSVOA\_N/WATER  
ALS Vial : 9 Sample Multiplier: 1

Instrument :  
MSVOA\_N  
ClientSampleId :  
626-A

Quant Method : Z:\voasrv\HPCHEM1\MSVOA\_N\methods\82N070824W.M  
Quant Title : SW846 8260

TIC Library : C:\Database\NIST20.L  
TIC Integration Parameters: LSCINT.P

TIC Top Hit name	RT	EstConc	Units	Response	--Internal Standard--			
					#	RT	Resp	Conc
Propanal	4.289	13.8	ug/l	108476	1	8.224	394016	50.0
1,3-Dioxolane, ...	10.806	15.3	ug/l	220849	3	11.865	720495	50.0
1,3-Dioxolane, ...	10.947	9.4	ug/l	135866	3	11.865	720495	50.0