

Data Path : Z:\VOASRV\HPCHEM1\MSVOA N\DATA\VN071320\
 Data File : VN062513.D
 Acq On : 13 Jul 2020 13:52
 Operator : JC/MD
 Sample : VN0713WBL01
 Misc : 5.00mL/MSVOA N/WATER
 ALS Vial : 10 Sample Multiplier: 1

Instrument :
 MSVOA_N
 ClientSampleId :
 VN0713WBL01

Quant Time: Jul 14 01:00:13 2020
 Quant Method : Z:\VOASRV\HPCHEM1\MSVOA N\METHODS\624N071320W.M
 Quant Title : METHOD 624 VOLATILE ORGANIC ANALYSIS
 QLast Update : Tue Jul 14 00:52:57 2020
 Response via : Initial Calibration

Internal Standards	R.T.	QIon	Response	Conc	Units	Dev(Min)
1) Bromochloromethane	7.15	128	43704	30.00	ug/l	0.00
28) 1,4-Difluorobenzene	8.55	114	241792	30.00	ug/l	0.00
57) Chlorobenzene-d5	11.38	117	210015	30.00	ug/l	0.00

System Monitoring Compounds

27) 1,2-Dichloroethane-d4	7.99	65	112223	29.89	ug/l	0.00
Spiked Amount	30.000	Range	50 - 169	Recovery	=	99.63%
60) 4-Bromofluorobenzene	12.38	95	90577	25.34	ug/l	0.00
Spiked Amount	30.000	Range	56 - 143	Recovery	=	84.47%
63) Toluene-d8	10.06	98	301053	30.34	ug/l	0.00
Spiked Amount	30.000	Range	66 - 137	Recovery	=	101.13%

Target Compounds

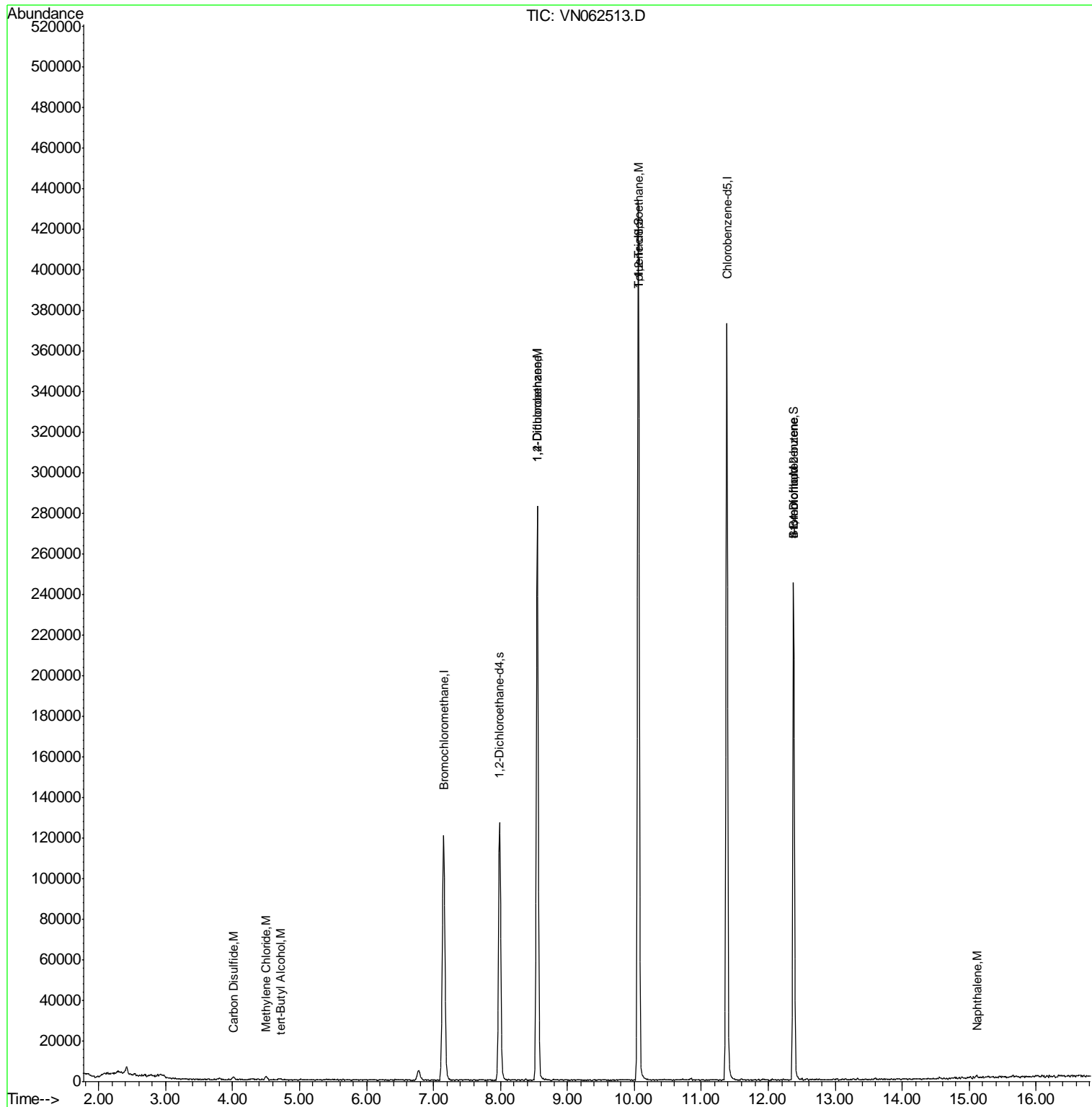
					Ovalue	
16) Carbon Disulfide	4.01	76	2544	0.310	ug/l	# 75
18) Methylene Chloride	4.50	84	909	0.294	ug/l	# 53
23) tert-Butyl Alcohol	4.72	59	107	0.204	ug/l	# 100
36) 1,2-Dichloroethane	8.55	62	8906	2.034	ug/l	# 77
50) 1,1,2-Trichloroethane	10.07	97	10690	3.812	ug/l	# 1
56) Bromoform	12.38	173	616	0.295	ug/l	# 1
77) t-1,4-Dichloro-2-butene	12.38	75	46517	32.069	ug/l	# 11
91) Naphthalene	15.11	128	1818	0.282	ug/l	# 70

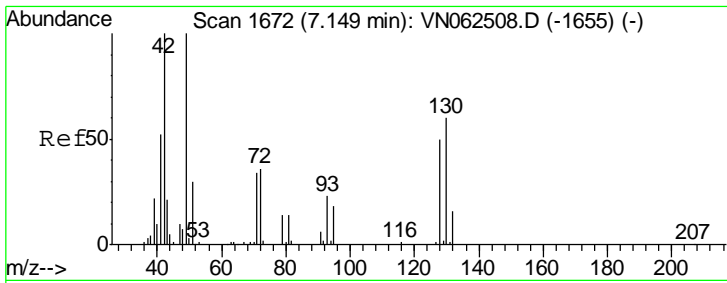
(#) = qualifier out of range (m) = manual integration (+) = signals summed

Data Path : Z:\VOASRV\HPCHEM1\MSVOA N\DATA\VN071320\
 Data File : VN062513.D
 Acq On : 13 Jul 2020 13:52
 Operator : JC/MD
 Sample : VN0713WBL01
 Misc : 5.00mL/MSVOA N/WATER
 ALS Vial : 10 Sample Multiplier: 1

Instrument :
 MSVOA_N
 Client Sampled :
 VN0713WBL01

Quant Time: Jul 14 01:00:13 2020
 Quant Method : Z:\VOASRV\HPCHEM1\MSVOA N\METHODS\624N071320W.M
 Quant Title : METHOD 624 VOLATILE ORGANIC ANALYSIS
 QLast Update : Tue Jul 14 00:52:57 2020
 Response via : Initial Calibration

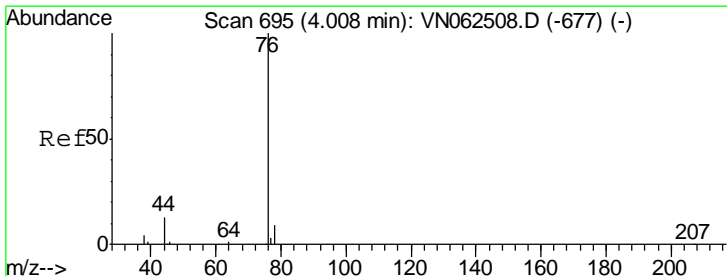
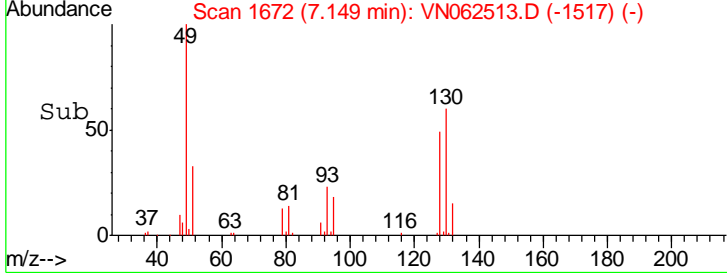
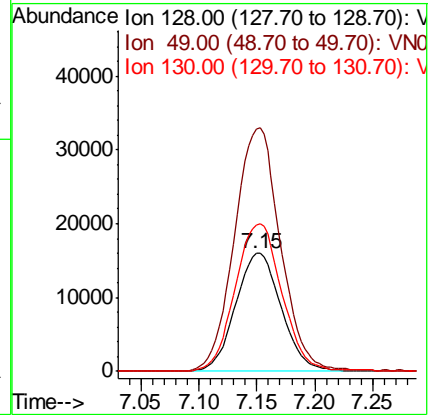
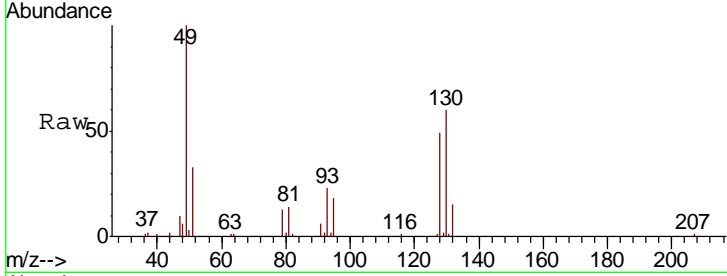




#1
 Bromochloromethane
 Concen: 30.000 ug/l
 RT: 7.15 min Scan# 1672
 Delta R.T. -0.00 min
 Lab File: VN062513.D
 Acq: 13 Jul 2020 13:52

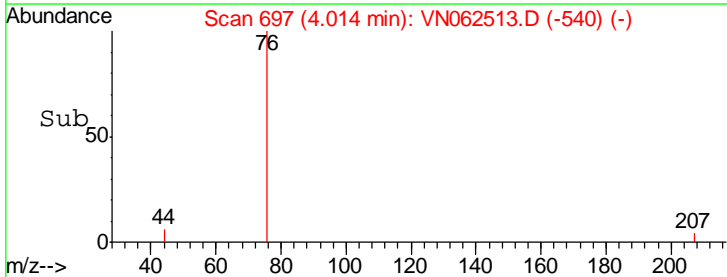
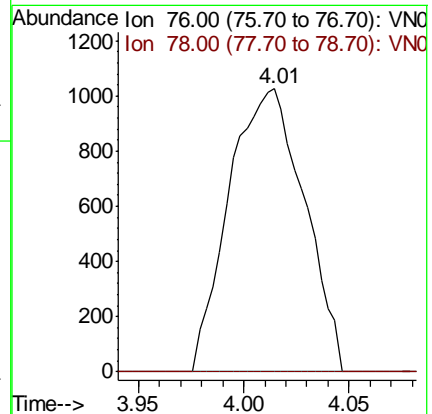
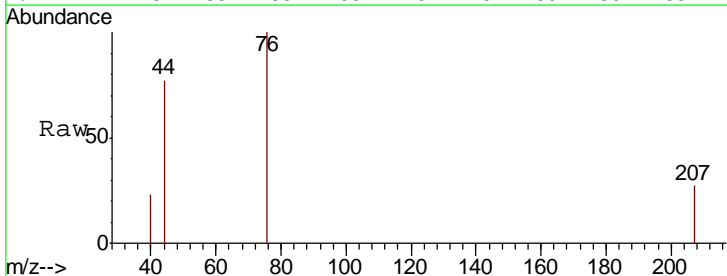
Instrument :
 MSVOA_N
 ClientSampled :
 VN0713WBL01

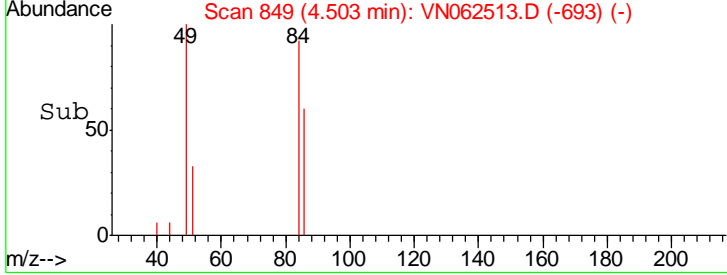
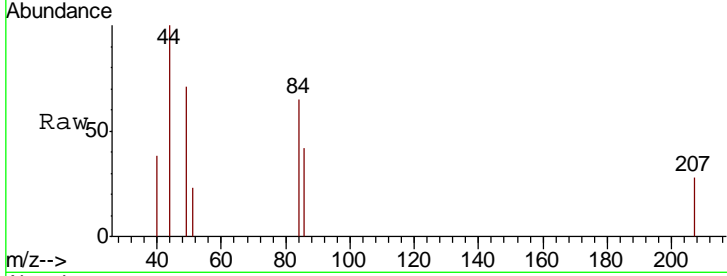
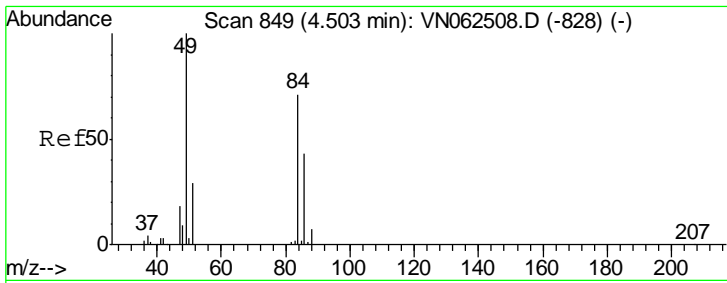
Tgt Ion	Resp	Lower	Upper
128	43704		
Ion Ratio			
128	100		
49	208.5	0.0	525.0
130	128.0	0.0	319.8



#16
 Carbon Disulfide
 Concen: 0.310 ug/l
 RT: 4.01 min Scan# 697
 Delta R.T. 0.01 min
 Lab File: VN062513.D
 Acq: 13 Jul 2020 13:52

Tgt Ion	Resp	Lower	Upper
76	2544		
Ion Ratio			
76	100		
78	0.0	7.4	11.0#

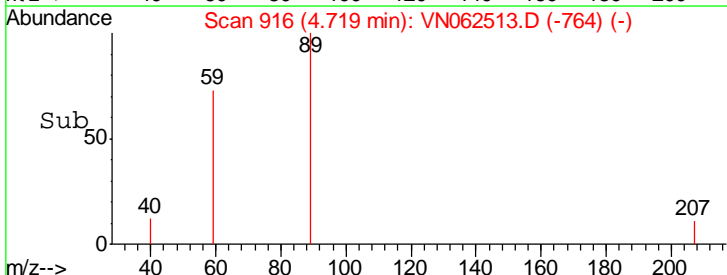
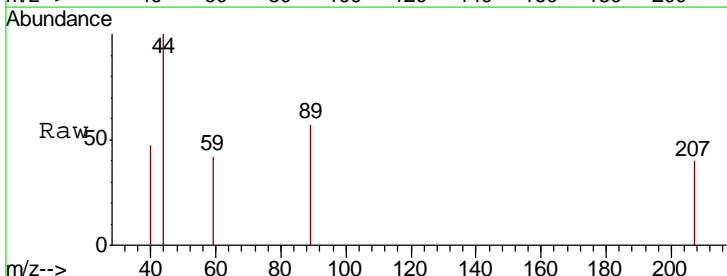
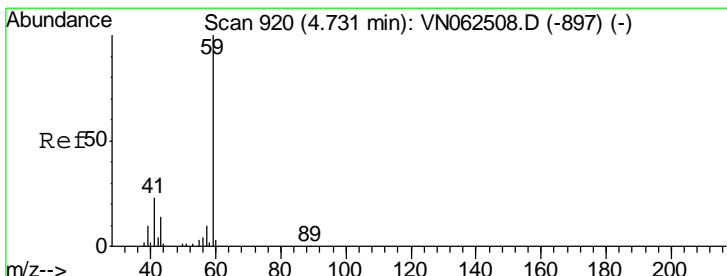
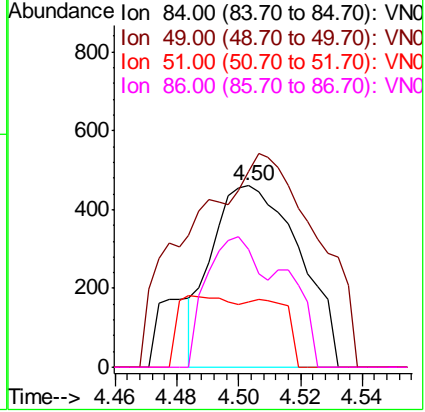




#18
 Methylene Chloride
 Concen: 0.294 ug/l
 RT: 4.50 min Scan# 849
 Delta R.T. -0.00 min
 Lab File: VN062513.D
 Acq: 13 Jul 2020 13:52

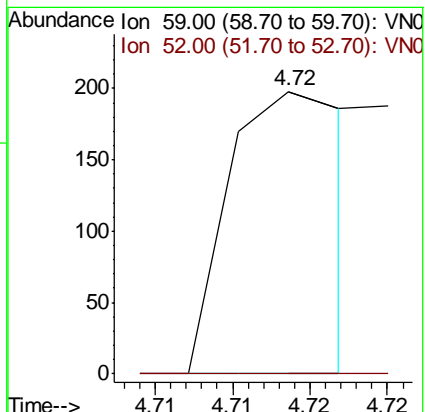
Tgt Ion	Resp	Lower	Upper
84	100		
49	47.6	112.1	168.1#
51	35.9	33.0	49.4
86	65.2	48.2	72.4

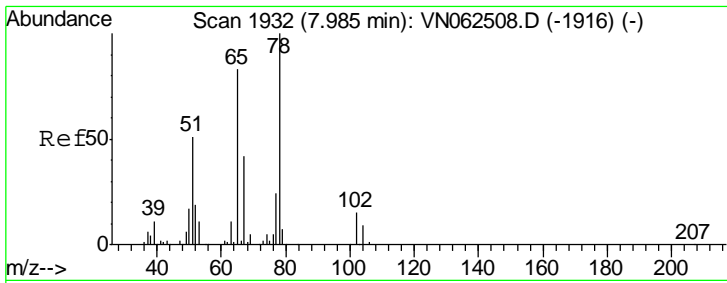
Instrument : MSVOA_N
 ClientSampled : VN0713WBL01



#23
 tert-Butyl Alcohol
 Concen: 0.204 ug/l
 RT: 4.72 min Scan# 916
 Delta R.T. -0.01 min
 Lab File: VN062513.D
 Acq: 13 Jul 2020 13:52

Tgt Ion	Resp	Lower	Upper
59	100		
52	0.0	0.0	0.0

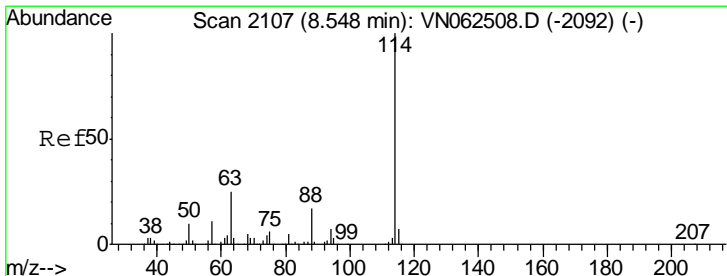
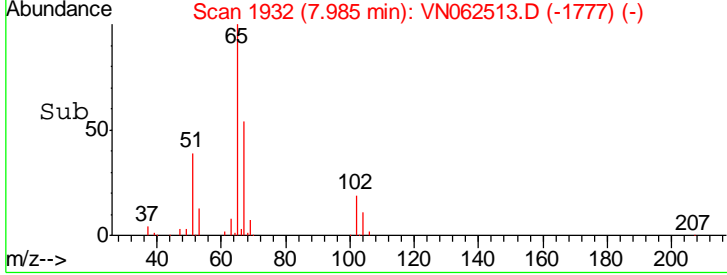
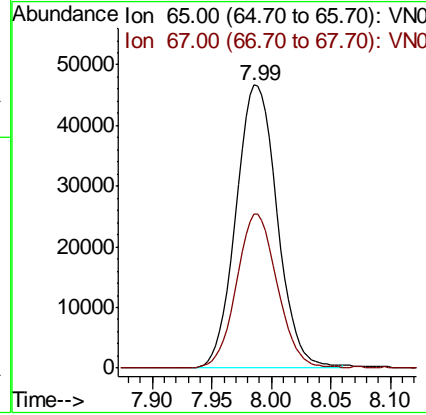
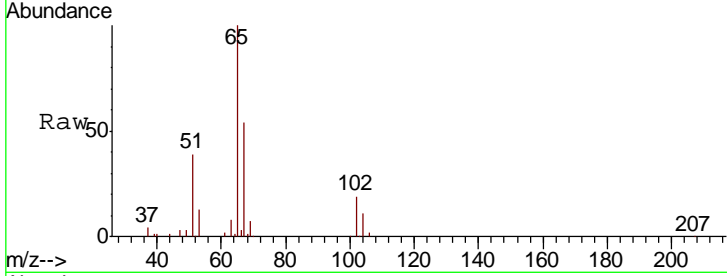




#27
 1,2-Dichloroethane-d4
 Concen: 29.891 ug/l
 RT: 7.99 min Scan# 1932
 Delta R.T. -0.00 min
 Lab File: VN062513.D
 Acq: 13 Jul 2020 13:52

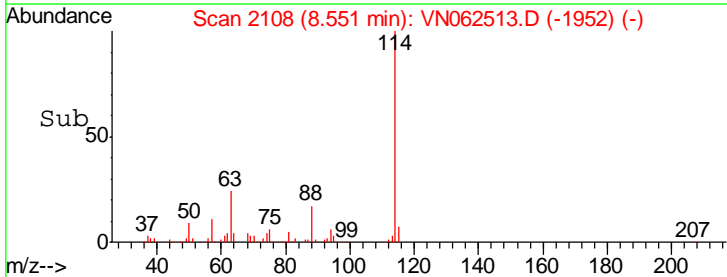
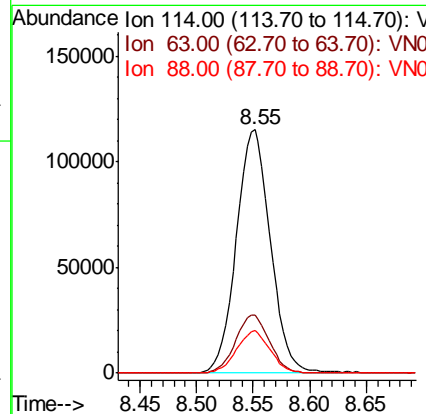
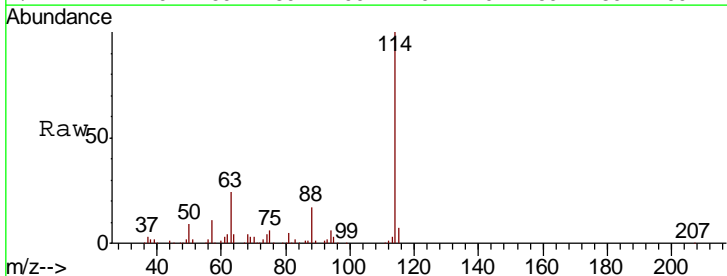
Instrument :
 MSVOA_N
 ClientSampled :
 VN0713WBL01

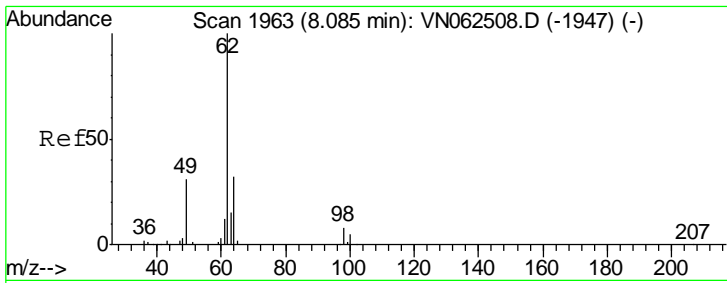
Tgt Ion: 65 Resp: 112223
 Ion Ratio Lower Upper
 65 100
 67 53.9 41.7 62.5



#28
 1,4-Difluorobenzene
 Concen: 30.000 ug/l
 RT: 8.55 min Scan# 2108
 Delta R.T. 0.00 min
 Lab File: VN062513.D
 Acq: 13 Jul 2020 13:52

Tgt Ion: 114 Resp: 241792
 Ion Ratio Lower Upper
 114 100
 63 23.7 19.4 29.0
 88 17.1 13.5 20.3

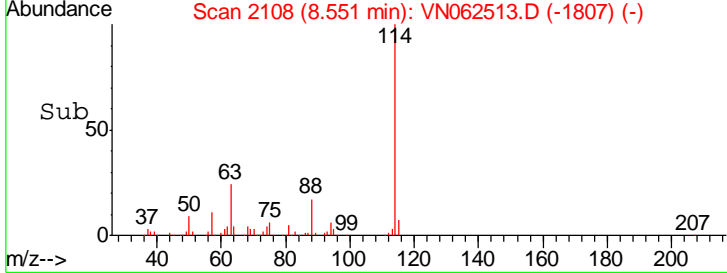
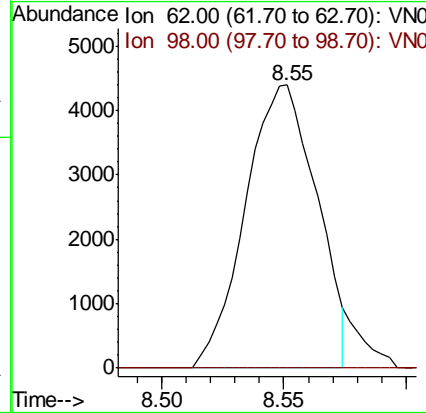
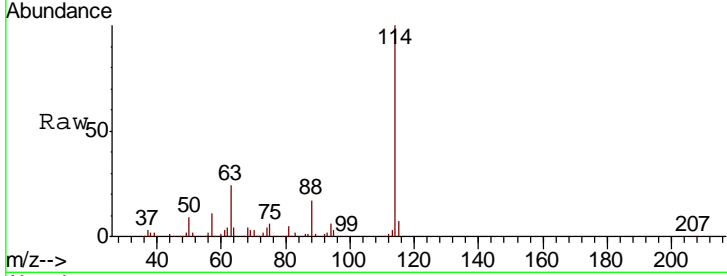




#36
 1,2-Dichloroethane
 Concen: 2.034 ug/l
 RT: 8.55 min Scan# 2108
 Delta R.T. 0.47 min
 Lab File: VN062513.D
 Acq: 13 Jul 2020 13:52

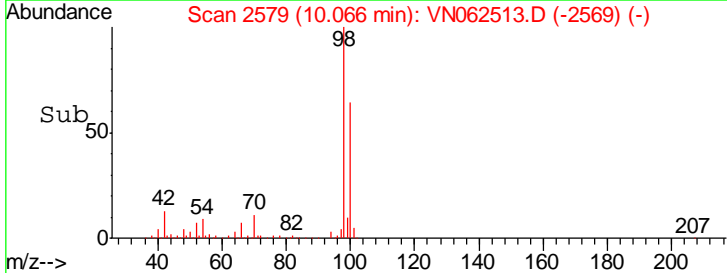
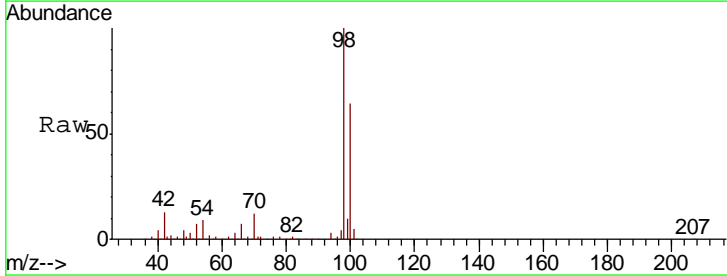
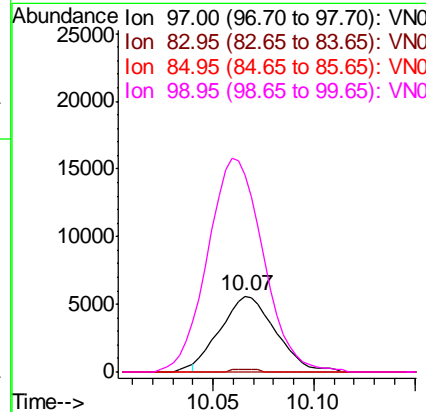
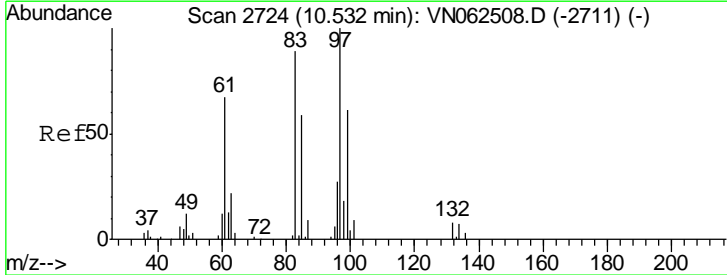
Instrument :
 MSVOA_N
ClientSampled :
 VN0713WBL01

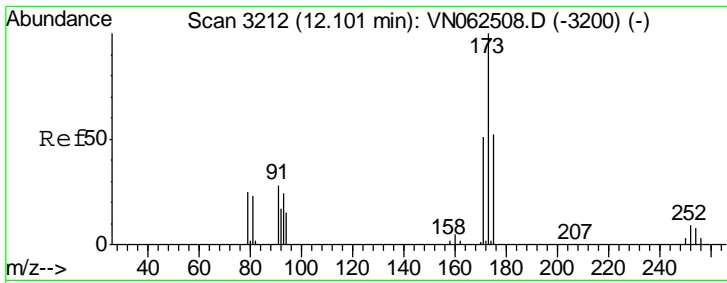
Tgt Ion	Resp	Lower	Upper
62	100		
98	0.0	6.6	9.8#



#50
 1,1,2-Trichloroethane
 Concen: 3.812 ug/l
 RT: 10.07 min Scan# 2579
 Delta R.T. -0.47 min
 Lab File: VN062513.D
 Acq: 13 Jul 2020 13:52

Tgt Ion	Resp	Lower	Upper
97	100		
83	3.9	71.3	106.9#
85	0.0	47.2	70.8#
99	257.5	48.4	72.6#

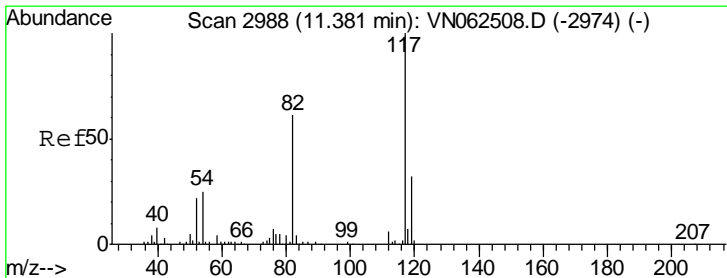
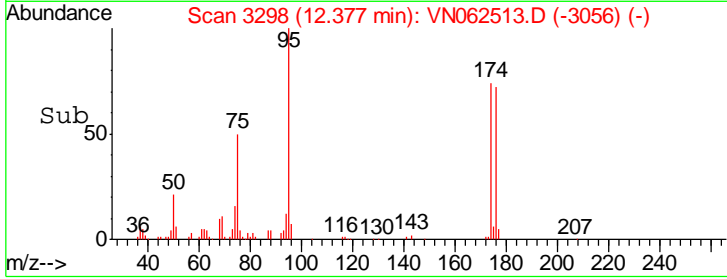
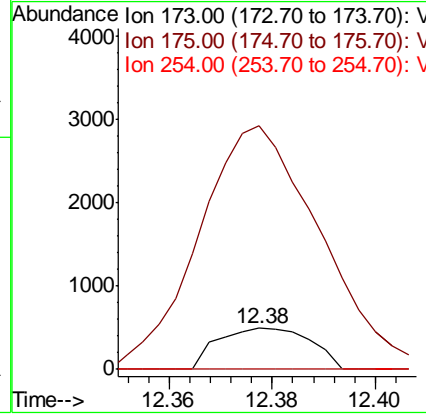
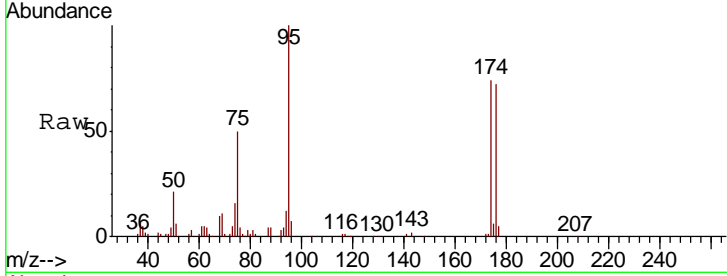




#56
 Bromoform
 Concen: 0.295 ug/l
 RT: 12.38 min Scan# 3298
 Delta R.T. 0.28 min
 Lab File: VN062513.D
 Acq: 13 Jul 2020 13:52

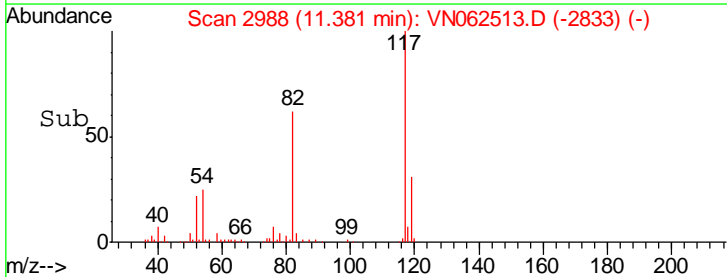
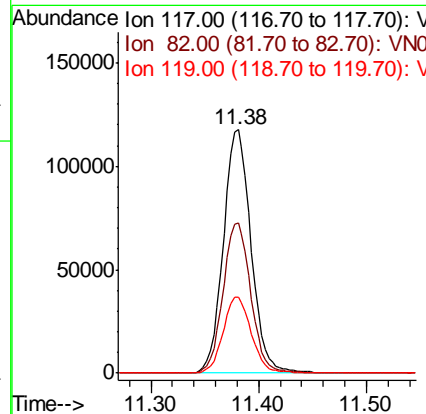
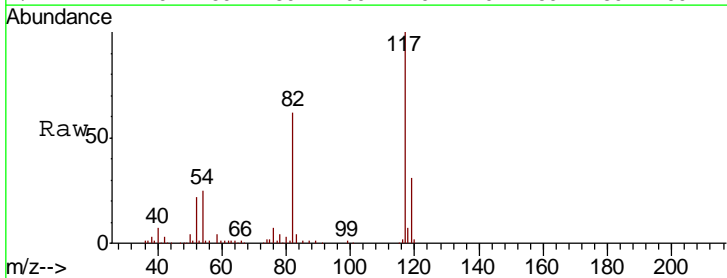
Instrument :
 MSVOA_N
 ClientSampled :
 VN0713WBL01

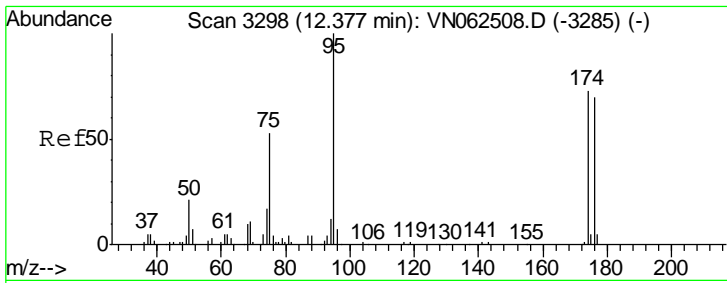
Tgt Ion	Resp	Lower	Upper
173	616		
175	770.8	38.1	57.1#
254	0.0	6.2	9.2#



#57
 Chlorobenzene-d5
 Concen: 30.000 ug/l
 RT: 11.38 min Scan# 2988
 Delta R.T. -0.00 min
 Lab File: VN062513.D
 Acq: 13 Jul 2020 13:52

Tgt Ion	Resp	Lower	Upper
117	210015		
82	61.9	49.0	73.6
119	31.6	25.6	38.4

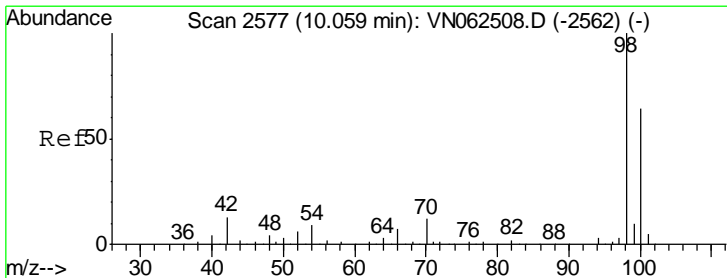
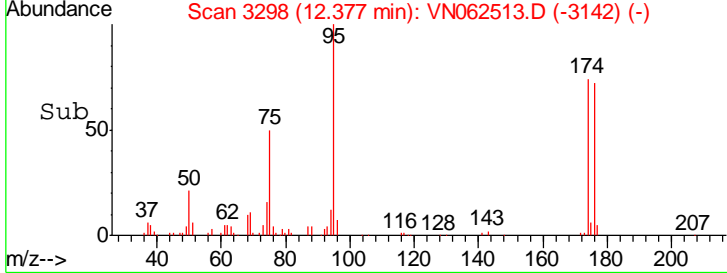
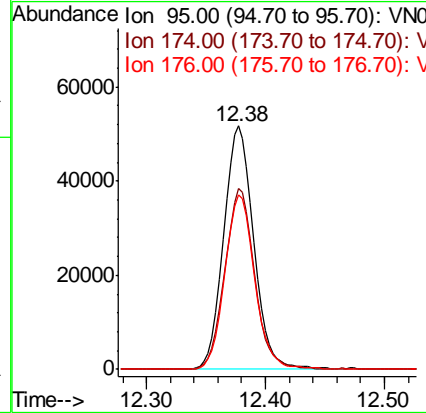
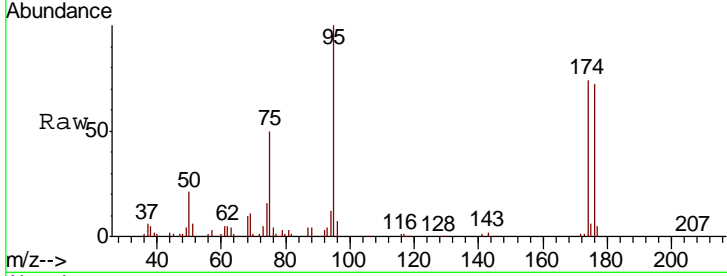




#60
 4-Bromofluorobenzene
 Concen: 25.344 ug/l
 RT: 12.38 min Scan# 3298
 Delta R.T. -0.00 min
 Lab File: VN062513.D
 Acq: 13 Jul 2020 13:52

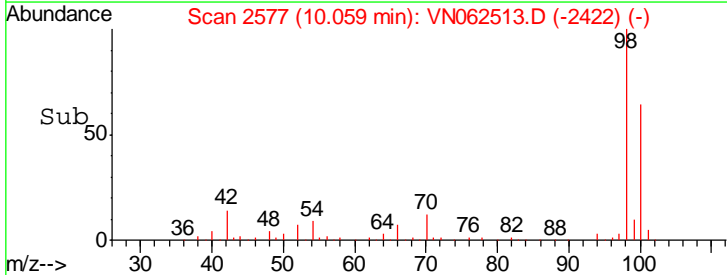
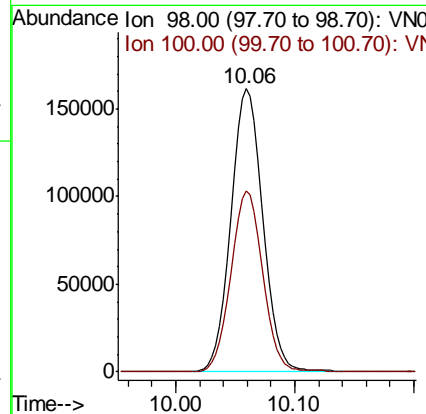
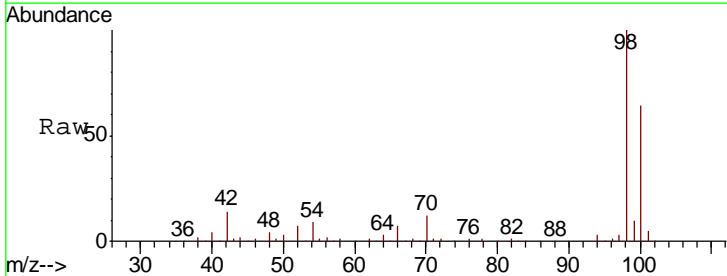
Instrument :
 MSVOA_N
 ClientSampled :
 VN0713WBL01

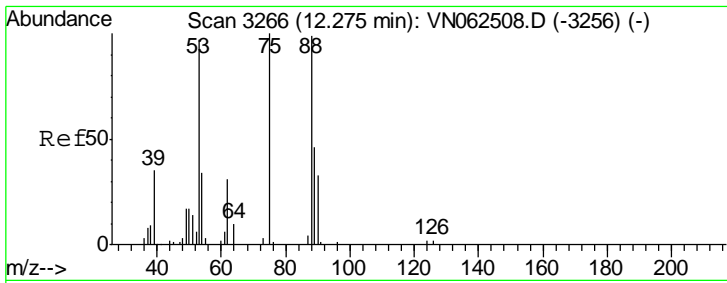
Tgt Ion	Resp	Lower	Upper
95	90577		
174	73.4	57.5	86.3
176	71.2	56.3	84.5



#63
 Toluene-d8
 Concen: 30.336 ug/l
 RT: 10.06 min Scan# 2577
 Delta R.T. -0.00 min
 Lab File: VN062513.D
 Acq: 13 Jul 2020 13:52

Tgt Ion	Resp	Lower	Upper
98	301053		
100	63.4	50.4	75.6

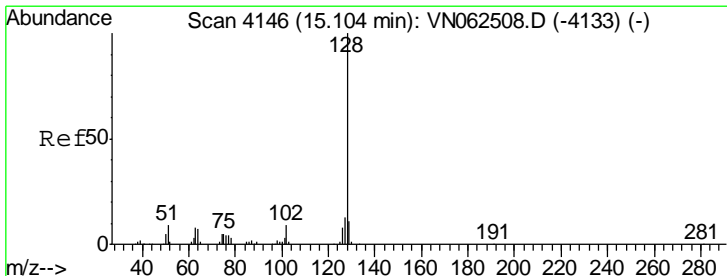
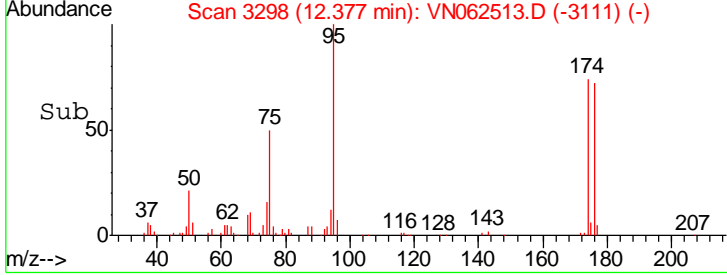
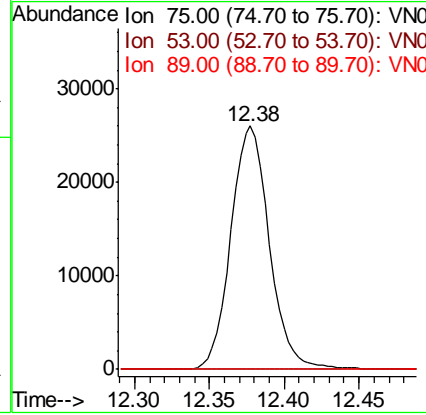
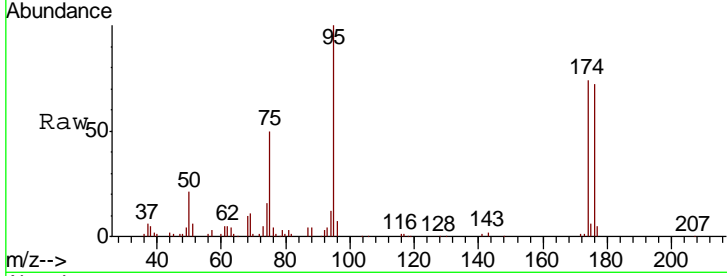




#77
 t-1,4-Dichloro-2-butene
 Concen: 32.069 ug/l
 RT: 12.38 min Scan# 3298
 Delta R.T. 0.10 min
 Lab File: VN062513.D
 Acq: 13 Jul 2020 13:52

Instrument :
 MSVOA_N
ClientSampled :
 VN0713WBL01

Tgt Ion	Resp	Lower	Upper
75	46517		
53	0.0	48.3	144.8#
89	0.0	23.3	69.8#



#91
 Naphthalene
 Concen: 0.282 ug/l
 RT: 15.11 min Scan# 4148
 Delta R.T. 0.01 min
 Lab File: VN062513.D
 Acq: 13 Jul 2020 13:52

Tgt Ion	Resp	Lower	Upper
128	1818		
127	0.0	10.0	15.0#
129	0.0	8.8	13.2#

