

Data Path : Z:\voasrv\HPCHEM1\MSVOA_N\Data\VN071421\
 Data File : VN067725.D
 Acq On : 13 Jul 2021 18:37
 Operator : JC/MD
 Sample : VSTDICV020
 Misc : 5.00mL/MSVOA_N/WATER
 ALS Vial : 8 Sample Multiplier: 1

Instrument :
 MSVOA_N
 ClientSampled :

Quant Time: Jul 14 01:21:00 2021
 Quant Method : Z:\voasrv\HPCHEM1\MSVOA_N\methods\624N071421W.M
 Quant Title : METHOD 624 VOLATILE ORGANIC ANALYSIS
 QLast Update : Wed Jul 14 01:19:19 2021
 Response via : Initial Calibration

Compound	R.T.	QIon	Response	Conc	Units	Dev(Min)
Internal Standards						
1) Bromochloromethane	7.659	128	76345	30.000	ug/l	0.00
28) 1,4-Difluorobenzene	8.968	114	448397	30.000	ug/l	0.00
57) Chlorobenzene-d5	11.747	117	426302	30.000	ug/l	0.00
System Monitoring Compounds						
27) 1,2-Dichloroethane-d4	8.440	65	194036	31.459	ug/l	0.00
Spiked Amount	30.000	Range 91 - 110	Recovery	=	104.867%	
60) 4-Bromofluorobenzene	12.733	95	199962	28.883	ug/l	0.00
Spiked Amount	30.000	Range 63 - 112	Recovery	=	96.267%	
63) Toluene-d8	10.443	98	594615	30.326	ug/l	0.00
Spiked Amount	30.000	Range 91 - 112	Recovery	=	101.100%	
Target Compounds						
						Qvalue
2) Dichlorodifluoromethane	2.070	85	73144	18.747	ug/l	93
3) Chloromethane	2.301	50	92952	19.074	ug/l	99
4) Vinyl Chloride	2.443	62	144241	19.026	ug/l	100
5) Bromomethane	2.856	94	125072	19.814	ug/l	96
6) Chloroethane	3.019	64	108013	19.132	ug/l	100
7) Trichlorofluoromethane	3.371	101	265535	18.876	ug/l	97
8) Diethyl Ether	3.819	74	48642	18.589	ug/l	96
9) 1,1,2-Trichlorotrifluo...	4.205	101	74079	18.526	ug/l	99
10) 1,1-Dichloroethene	4.173	96	70710	19.093	ug/l	98
11) Methyl Iodide	4.417	142	77880	15.906	ug/l	97
12) Methyl Acetate	4.859	43	95733	18.939	ug/l	97
13) Acrolein	4.044	56	47449	89.616	ug/l #	43
14) Acrylonitrile	5.559	53	202541	91.125	ug/l	98
15) Acetone	4.285	58	49931	90.622	ug/l	100
16) Carbon Disulfide	4.524	76	175234	17.918	ug/l	97
17) Allyl chloride	4.838	41	119314	18.309	ug/l	96
18) Methylene Chloride	5.095	84	89913	17.544	ug/l	98
19) trans-1,2-Dichloroethene	5.594	96	80606	18.254	ug/l	98
20) Diisopropyl ether	6.501	45	277012	17.953	ug/l	96
21) 1,1-Dichloroethane	6.388	63	154816	18.239	ug/l	98
22) cis-1,2-Dichloroethene	7.329	96	100048	18.361	ug/l	94
23) tert-Butyl Alcohol	5.388	59	75451	92.093	ug/l #	100
24) Methyl tert-Butyl Ether	5.621	73	280830	18.366	ug/l	99
25) Chloroform	7.820	83	172742	18.288	ug/l	98
26) Cyclohexane	8.096	56	133371	18.032	ug/l #	100
29) 1,1-Dichloropropene	8.222	75	122890	17.468	ug/l	99
30) 2-Butanone	7.340	43	286371	87.899	ug/l	98
31) 2,2-Dichloropropane	7.327	77	130468	16.623	ug/l	99
32) 1,1,1-Trichloroethane	8.016	97	152212	17.618	ug/l	99
33) Carbon Tetrachloride	8.206	117	127074	17.226	ug/l	98
34) Benzene	8.461	78	377996	17.975	ug/l	99
35) Methacrylonitrile	7.640	41	61023	18.221	ug/l	97
36) 1,2-Dichloroethane	8.531	62	139725	17.848	ug/l	100
37) Trichloroethene	9.217	130	95995	17.571	ug/l	97
38) Methylcyclohexane	9.461	83	137162	17.603	ug/l	98
39) 1,2-Dichloropropane	9.494	63	94037	17.535	ug/l	99
40) Dibromomethane	9.579	93	68556	17.777	ug/l	99
41) Bromodichloromethane	9.765	83	131636	17.389	ug/l	99
42) Vinyl Acetate	6.436	43	1027500	79.276	ug/l	99

Data Path : Z:\voasrv\HPCHEM1\MSVOA_N\Data\VN071421\
 Data File : VN067725.D
 Acq On : 13 Jul 2021 18:37
 Operator : JC/MD
 Sample : VSTDICV020
 Misc : 5.00mL/MSVOA_N/WATER
 ALS Vial : 8 Sample Multiplier: 1

Instrument :
 MSVOA_N
 ClientSampled :

Quant Time: Jul 14 01:21:00 2021
 Quant Method : Z:\voasrv\HPCHEM1\MSVOA_N\methods\624N071421W.M
 Quant Title : METHOD 624 VOLATILE ORGANIC ANALYSIS
 QLast Update : Wed Jul 14 01:19:19 2021
 Response via : Initial Calibration

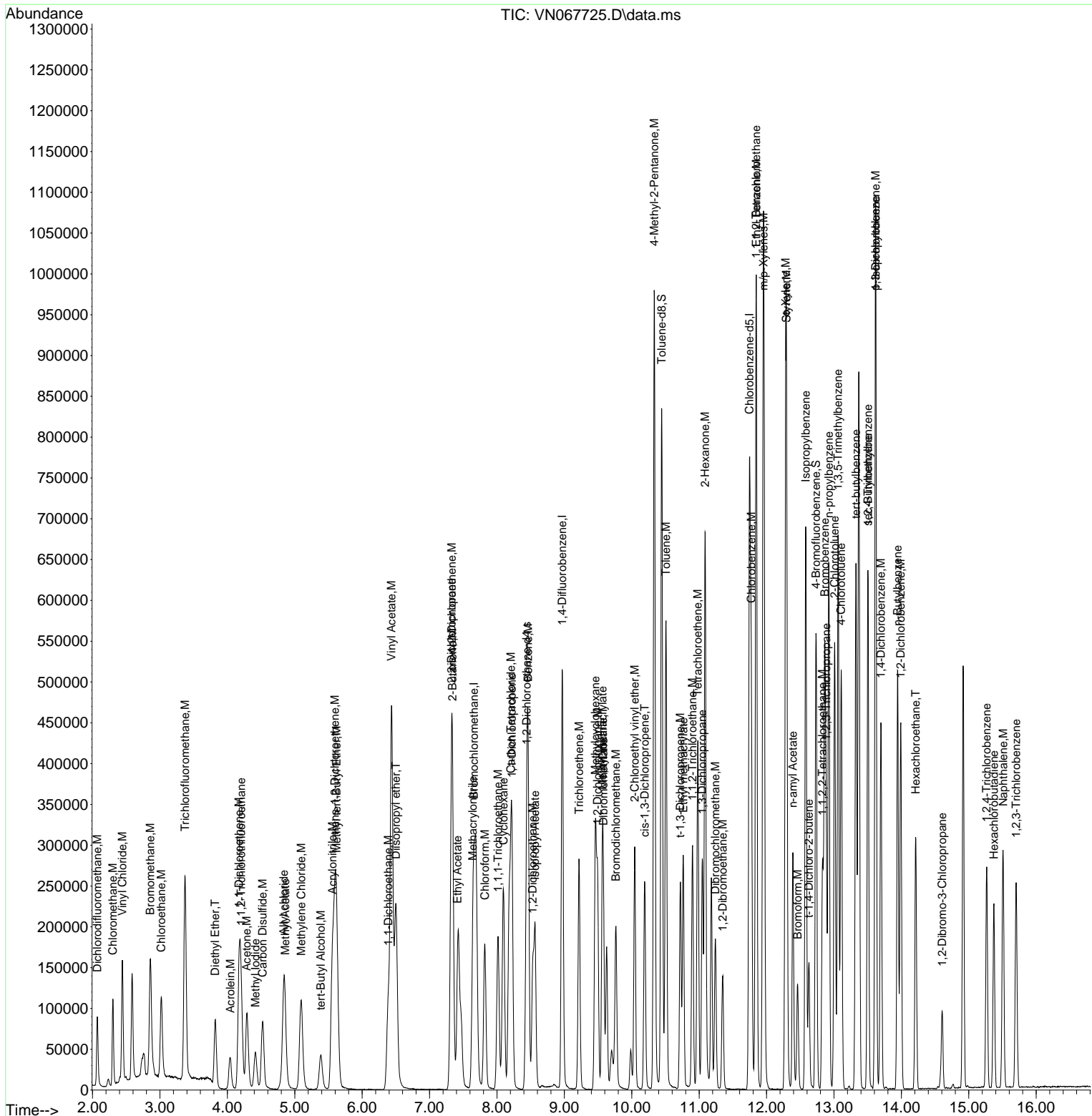
Compound	R.T.	QIon	Response	Conc	Units	Dev(Min)
43) Ethyl Acetate	7.415	43	121925	18.511	ug/l	97
44) Isopropyl Acetate	8.566	43	211620	17.695	ug/l	97
45) 1,4-Dioxane	9.571	88	29974	330.972	ug/l	97
46) Methyl methacrylate	9.563	41	89771	17.388	ug/l	98
47) n-amyl Acetate	12.390	43	164319	16.738	ug/l	99
48) t-1,3-Dichloropropene	10.719	75	137223	16.821	ug/l	94
49) cis-1,3-Dichloropropene	10.191	75	144770	16.718	ug/l	99
50) 1,1,2-Trichloroethane	10.902	97	94968	17.256	ug/l	95
51) Ethyl methacrylate	10.765	69	146387	17.105	ug/l	96
52) 1,3-Dichloropropane	11.047	76	159376	17.514	ug/l	97
53) Dibromochloromethane	11.240	129	95693	16.611	ug/l	99
54) 1,2-Dibromoethane	11.350	107	97363	17.151	ug/l	99
55) 2-Chloroethyl vinyl ether	10.043	63	129556	78.271	ug/l	98
56) Bromoform	12.460	173	61900	15.336	ug/l #	99
58) 4-Methyl-2-Pentanone	10.333	43	660086	90.175	ug/l	98
59) 2-Hexanone	11.087	43	459754	89.579	ug/l	100
61) Tetrachloroethene	10.979	164	90861	17.351	ug/l	98
62) Toluene	10.507	91	442019	17.628	ug/l	100
64) Chlorobenzene	11.773	112	259557	17.284	ug/l	99
65) 1,1,1,2-Tetrachloroethane	11.843	131	97912	17.697	ug/l	96
66) Ethyl Benzene	11.848	91	476575	17.176	ug/l	98
67) m/p-Xylenes	11.956	106	362082	34.213	ug/l	100
68) o-Xylene	12.283	106	181190	17.344	ug/l	98
69) Styrene	12.296	104	292319	16.921	ug/l	99
70) Isopropylbenzene	12.581	105	468149	17.364	ug/l	99
71) 1,1,2,2-Tetrachloroethane	12.830	83	137581	17.974	ug/l	99
72) 1,2,3-Trichloropropane	12.884	75	168131	26.421	ug/l	65
73) Bromobenzene	12.862	156	103728	16.740	ug/l	98
74) n-propylbenzene	12.924	91	533987	17.286	ug/l	100
75) 2-Chlorotoluene	13.010	91	324034	17.476	ug/l	99
76) 1,3,5-Trimethylbenzene	13.061	105	385884	17.385	ug/l	100
77) t-1,4-Dichloro-2-butene	12.629	75	31507	14.671	ug/l	95
78) 4-Chlorotoluene	13.106	91	318337	17.220	ug/l	100
79) tert-butylbenzene	13.326	119	330187	17.325	ug/l	97
80) 1,2,4-Trimethylbenzene	13.503	105	450847	20.455	ug/l	100
81) sec-Butylbenzene	13.503	105	450847	17.053	ug/l	100
82) p-Isopropyltoluene	13.619	119	362664	16.482	ug/l	99
83) 1,3-Dichlorobenzene	13.619	146	194234	16.785	ug/l	99
84) 1,4-Dichlorobenzene	13.696	146	186845	16.576	ug/l	99
85) n-Butylbenzene	13.943	91	300049	16.436	ug/l	99
86) Hexachloroethane	14.214	117	59353	16.214	ug/l	100
87) 1,2-Dichlorobenzene	13.991	146	186199	16.853	ug/l	99
88) 1,2-Dibromo-3-Chloropr...	14.606	75	25072	18.308	ug/l	99
89) 1,2,4-Trichlorobenzene	15.265	180	84107	16.697	ug/l	98
90) Hexachlorobutadiene	15.373	225	40894	16.890	ug/l	96
91) Naphthalene	15.509	128	268055	18.731	ug/l	100
92) 1,2,3-Trichlorobenzene	15.702	180	82155	17.023	ug/l	98

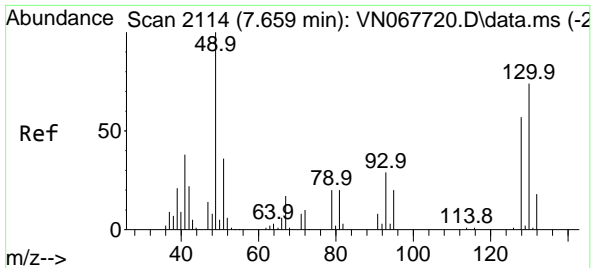
(#) = qualifier out of range (m) = manual integration (+) = signals summed

Data Path : Z:\voasrv\HPCHEM1\MSVOA_N\Data\VN071421\
 Data File : VN067725.D
 Acq On : 13 Jul 2021 18:37
 Operator : JC/MD
 Sample : VSTDICV020
 Misc : 5.00mL/MSVOA_N/WATER
 ALS Vial : 8 Sample Multiplier: 1

Instrument :
 MSVOA_N
 Client Sampled :

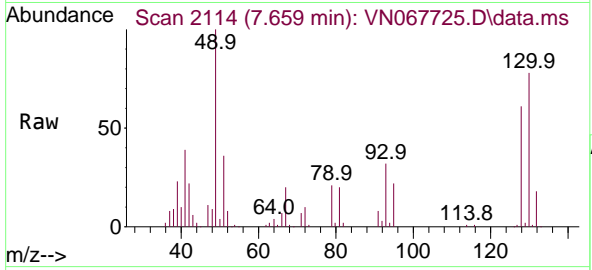
Quant Time: Jul 14 01:21:00 2021
 Quant Method : Z:\voasrv\HPCHEM1\MSVOA_N\methods\624N071421W.M
 Quant Title : METHOD 624 VOLATILE ORGANIC ANALYSIS
 QLast Update : Wed Jul 14 01:19:19 2021
 Response via : Initial Calibration





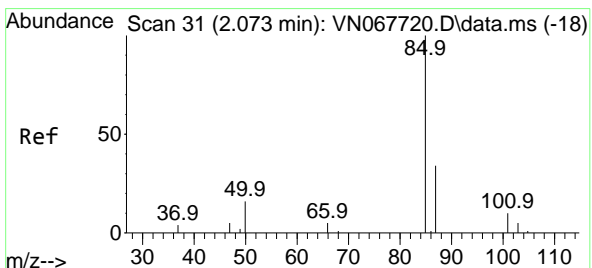
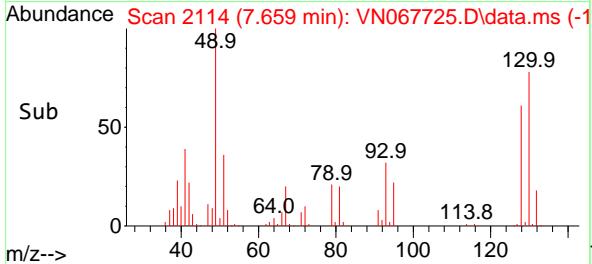
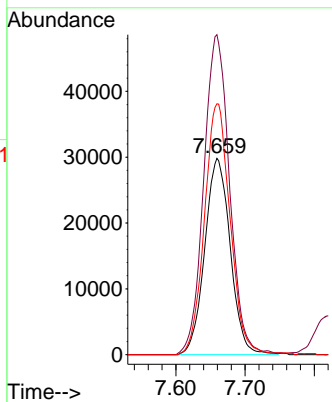
#1
 Bromochloromethane
 Concen: 30.000 ug/l
 RT: 7.659 min Scan# 2114
 Delta R.T. 0.000 min
 Lab File: VN067725.D
 Acq: 13 Jul 2021 18:37

Instrument :
 MSVOA_N
 ClientSampled :

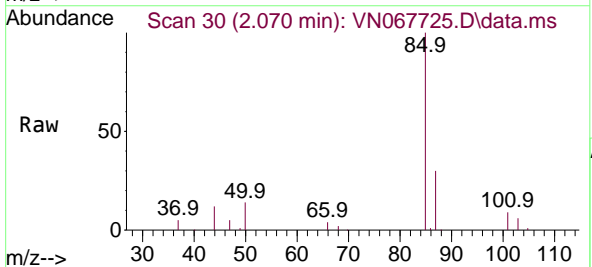


Tgt Ion:128 Resp: 76345

Ion	Ratio	Lower	Upper
128	100		
49	164.3	0.0	433.0
130	128.7	0.0	323.8

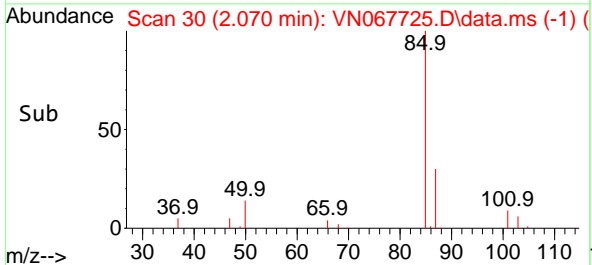
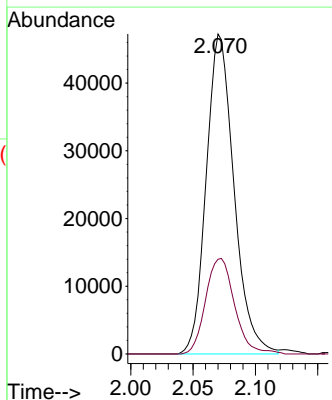


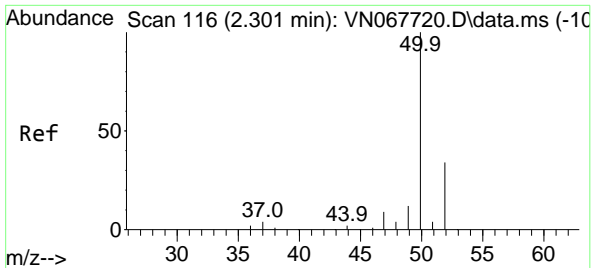
#2
 Dichlorodifluoromethane
 Concen: 18.747 ug/l
 RT: 2.070 min Scan# 30
 Delta R.T. -0.003 min
 Lab File: VN067725.D
 Acq: 13 Jul 2021 18:37



Tgt Ion: 85 Resp: 73144

Ion	Ratio	Lower	Upper
85	100		
87	29.6	17.0	50.9

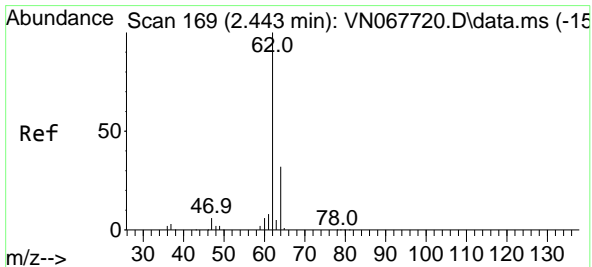
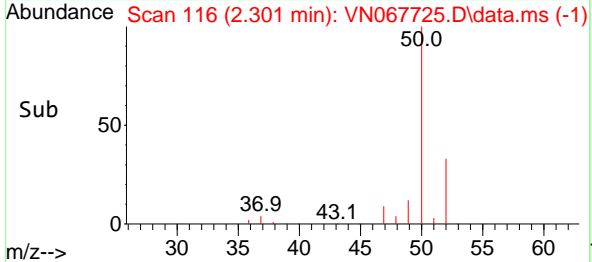
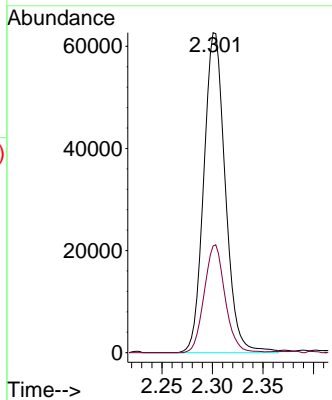
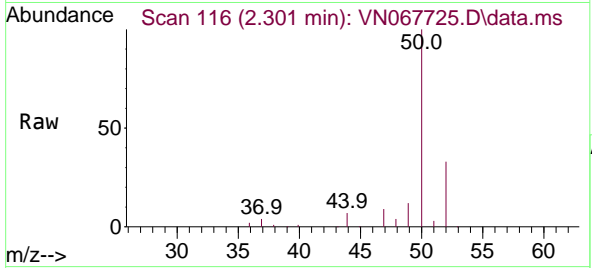




#3
 Chloromethane
 Concen: 19.074 ug/l
 RT: 2.301 min Scan# 116
 Delta R.T. -0.000 min
 Lab File: VN067725.D
 Acq: 13 Jul 2021 18:37

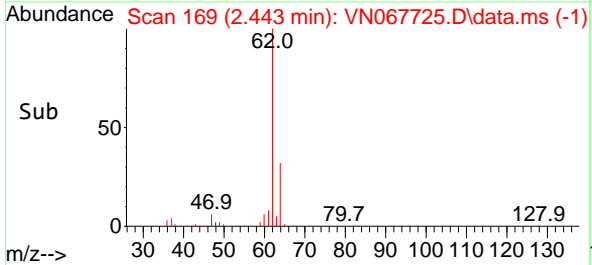
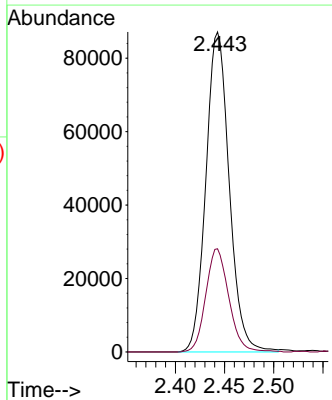
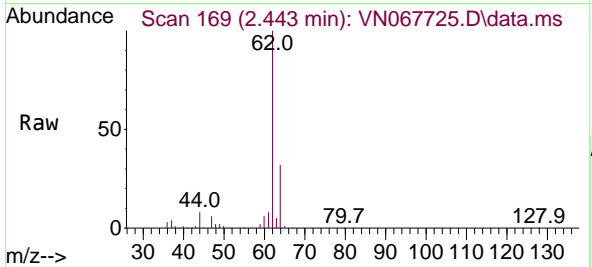
Instrument :
 MSVOA_N
 ClientSampled :

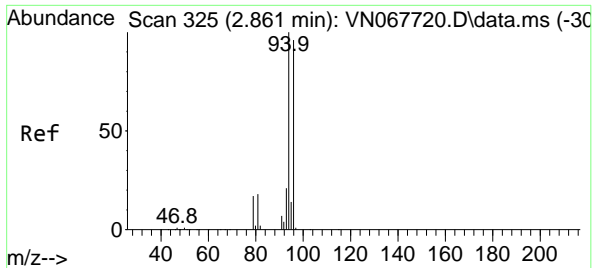
Tgt Ion: 50 Resp: 92952
 Ion Ratio Lower Upper
 50 100
 52 33.4 27.2 40.8



#4
 Vinyl Chloride
 Concen: 19.026 ug/l
 RT: 2.443 min Scan# 169
 Delta R.T. -0.000 min
 Lab File: VN067725.D
 Acq: 13 Jul 2021 18:37

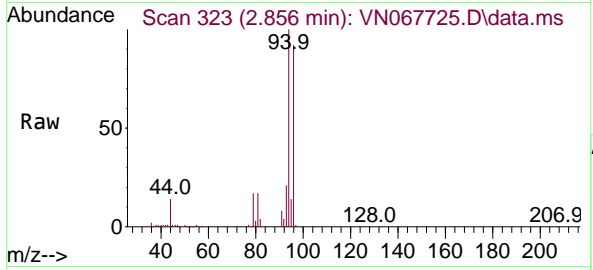
Tgt Ion: 62 Resp: 144241
 Ion Ratio Lower Upper
 62 100
 64 32.3 25.9 38.9



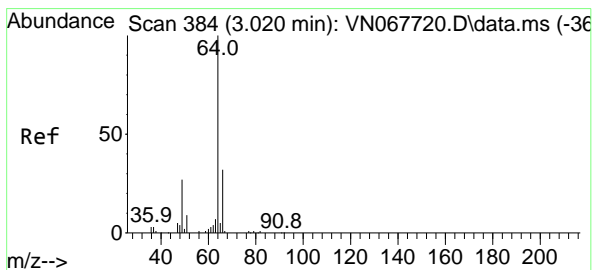
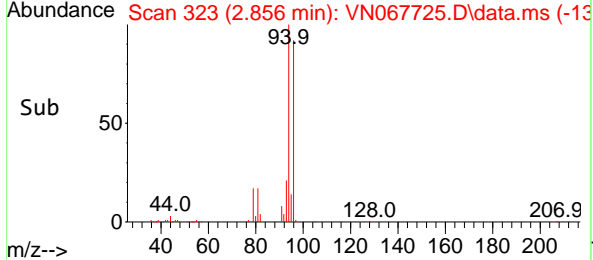
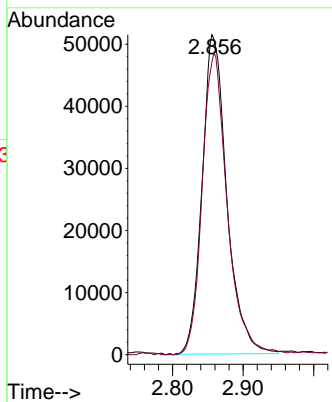


#5
 Bromomethane
 Concen: 19.814 ug/l
 RT: 2.856 min Scan# 323
 Delta R.T. -0.005 min
 Lab File: VN067725.D
 Acq: 13 Jul 2021 18:37

Instrument :
 MSVOA_N
 ClientSampled :

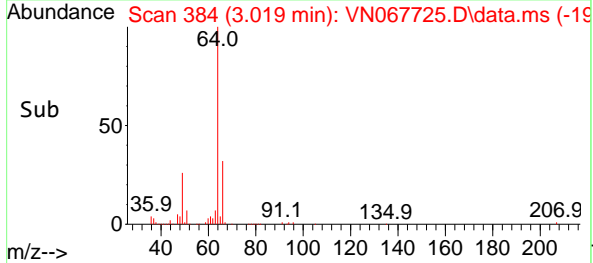
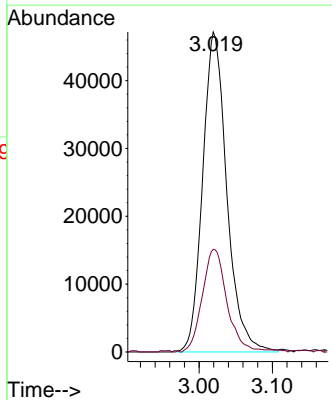
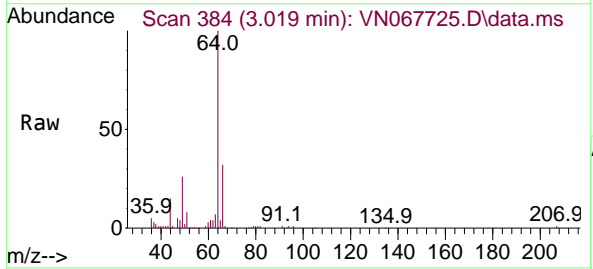


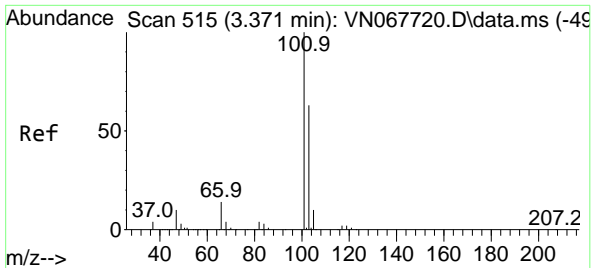
Tgt Ion: 94 Resp: 125072
 Ion Ratio Lower Upper
 94 100
 96 91.8 76.9 115.3



#6
 Chloroethane
 Concen: 19.132 ug/l
 RT: 3.019 min Scan# 384
 Delta R.T. -0.000 min
 Lab File: VN067725.D
 Acq: 13 Jul 2021 18:37

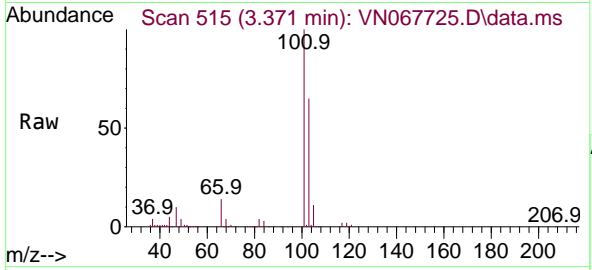
Tgt Ion: 64 Resp: 108013
 Ion Ratio Lower Upper
 64 100
 66 31.8 25.4 38.0



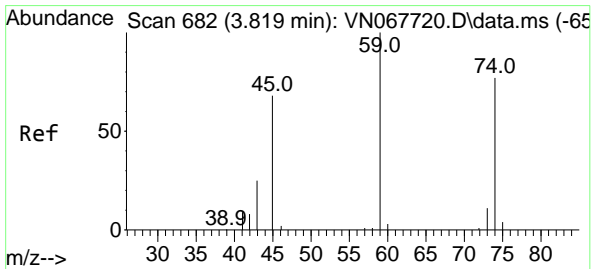
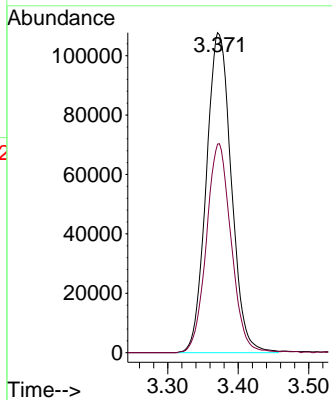
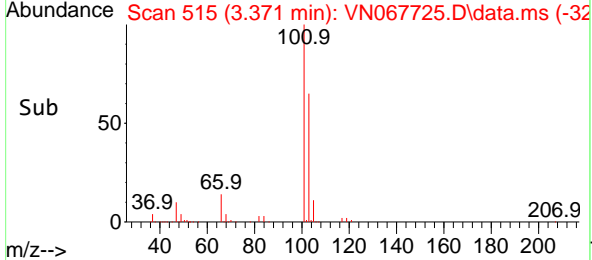


#7
 Trichlorofluoromethane
 Concen: 18.876 ug/l
 RT: 3.371 min Scan# 515
 Delta R.T. -0.000 min
 Lab File: VN067725.D
 Acq: 13 Jul 2021 18:37

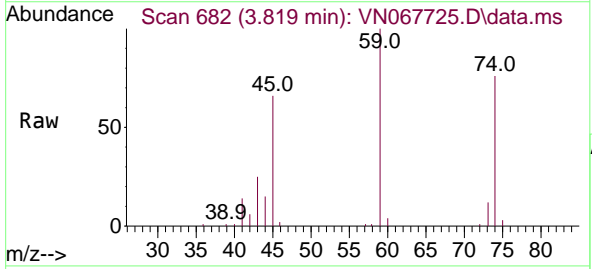
Instrument :
 MSVOA_N
 ClientSampled :



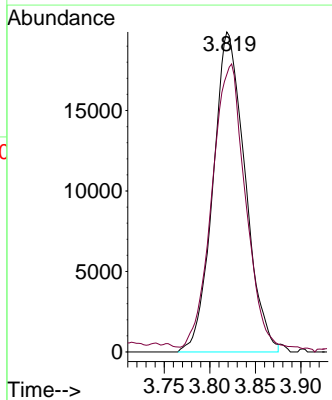
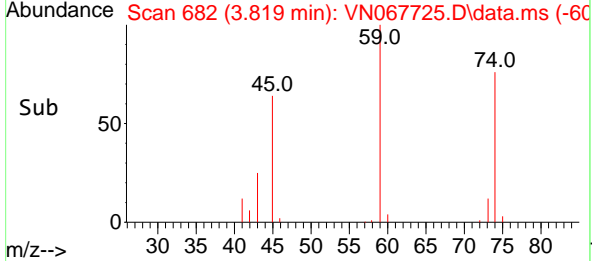
Tgt Ion: 101 Resp: 265535
 Ion Ratio Lower Upper
 101 100
 103 65.0 50.3 75.5

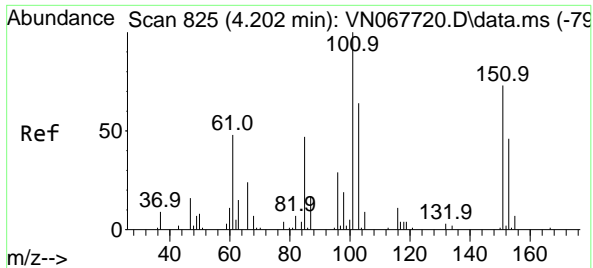


#8
 Diethyl Ether
 Concen: 18.589 ug/l
 RT: 3.819 min Scan# 682
 Delta R.T. -0.000 min
 Lab File: VN067725.D
 Acq: 13 Jul 2021 18:37



Tgt Ion: 74 Resp: 48642
 Ion Ratio Lower Upper
 74 100
 45 90.9 17.5 157.1

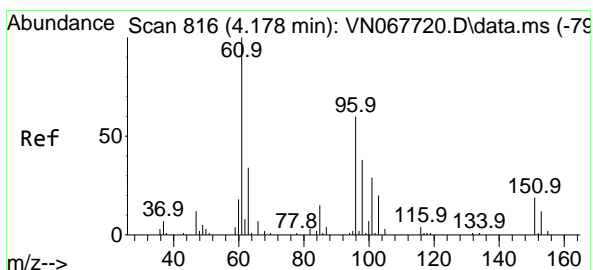
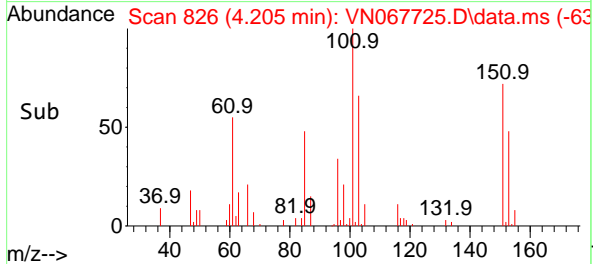
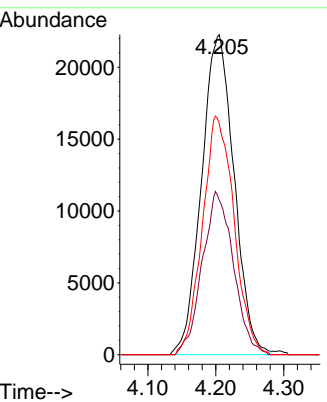
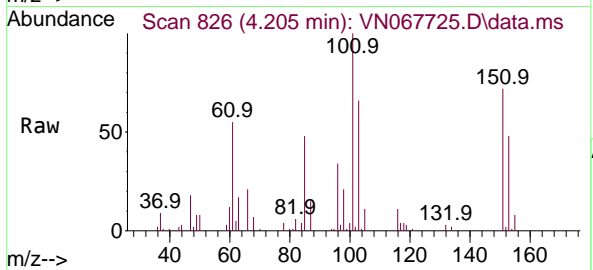




#9
 1,1,2-Trichlorotrifluoroethane
 Concen: 18.526 ug/l
 RT: 4.205 min Scan# 826
 Delta R.T. 0.003 min
 Lab File: VN067725.D
 Acq: 13 Jul 2021 18:37

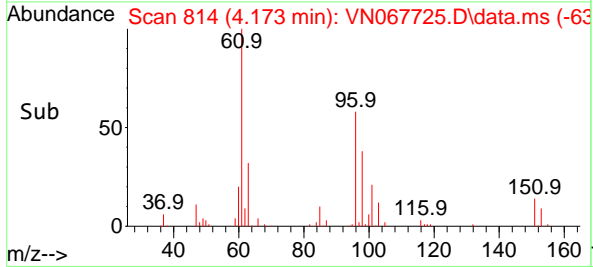
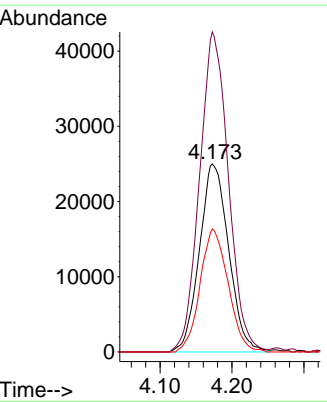
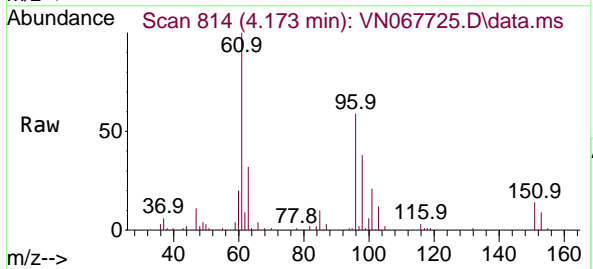
Instrument :
 MSVOA_N
 ClientSampled :

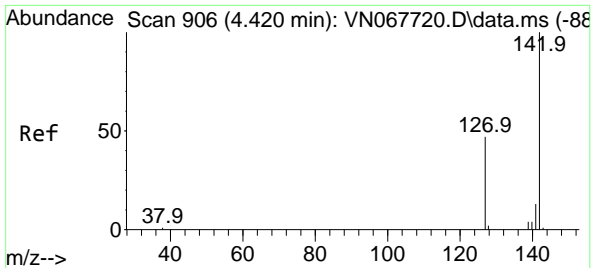
Tgt Ion	Resp	Lower	Upper
101	74079		
101	100		
85	48.7	0.0	98.0
151	72.4	0.0	143.8



#10
 1,1-Dichloroethene
 Concen: 19.093 ug/l
 RT: 4.173 min Scan# 814
 Delta R.T. -0.005 min
 Lab File: VN067725.D
 Acq: 13 Jul 2021 18:37

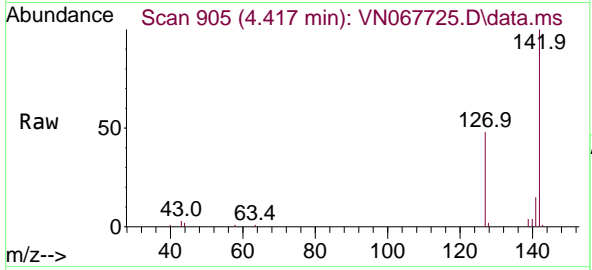
Tgt Ion	Resp	Lower	Upper
96	70710		
96	100		
61	170.2	133.9	200.9
98	65.5	50.5	75.7



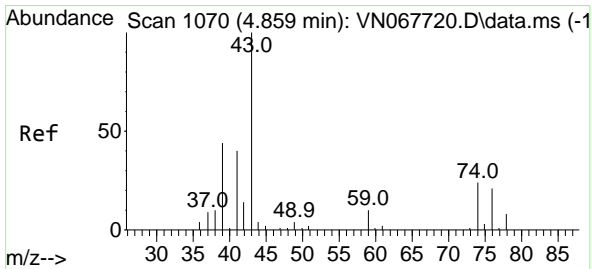
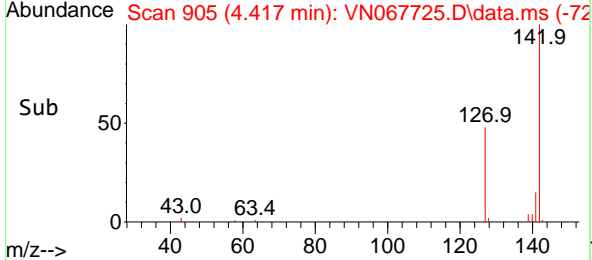
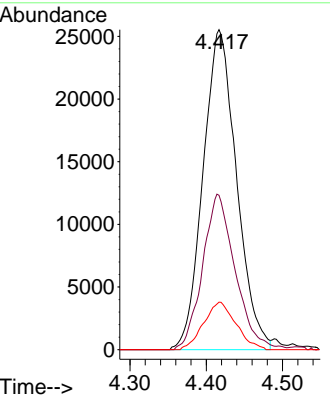


#11
 Methyl Iodide
 Concen: 15.906 ug/l
 RT: 4.417 min Scan# 905
 Delta R.T. -0.003 min
 Lab File: VN067725.D
 Acq: 13 Jul 2021 18:37

Instrument :
 MSVOA_N
 ClientSampled :

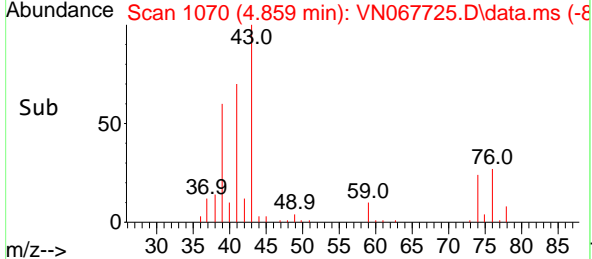
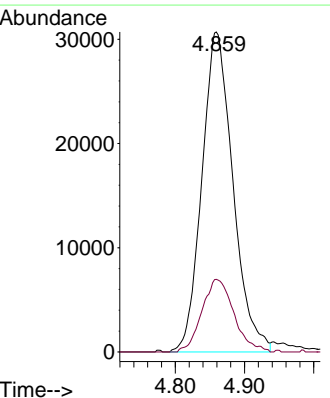
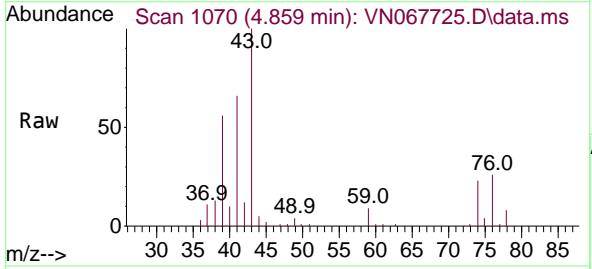


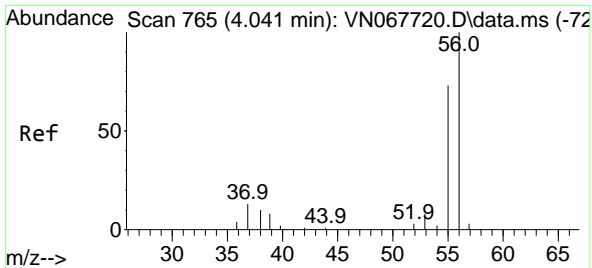
Tgt Ion:142 Resp: 77880
 Ion Ratio Lower Upper
 142 100
 127 48.2 23.4 70.2
 141 15.1 6.7 20.0



#12
 Methyl Acetate
 Concen: 18.939 ug/l
 RT: 4.859 min Scan# 1070
 Delta R.T. -0.000 min
 Lab File: VN067725.D
 Acq: 13 Jul 2021 18:37

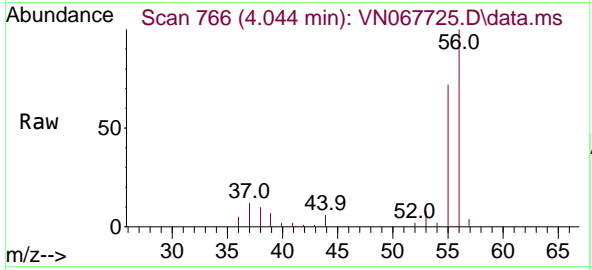
Tgt Ion: 43 Resp: 95733
 Ion Ratio Lower Upper
 43 100
 74 23.0 19.8 29.6



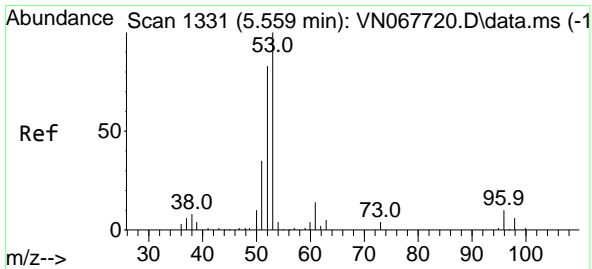
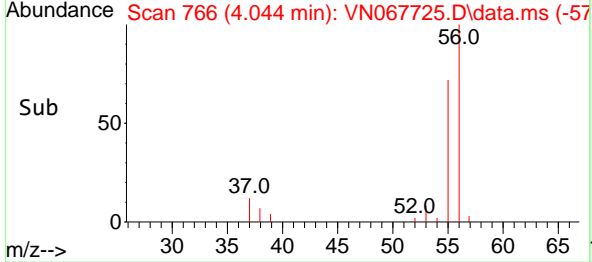
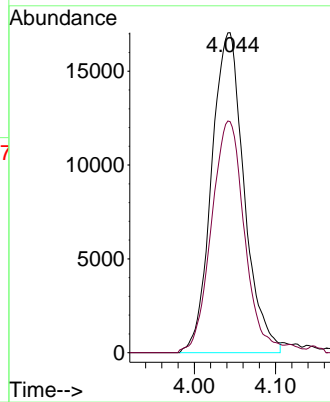


#13
 Acrolein
 Concen: 89.616 ug/l
 RT: 4.044 min Scan# 766
 Delta R.T. 0.003 min
 Lab File: VN067725.D
 Acq: 13 Jul 2021 18:37

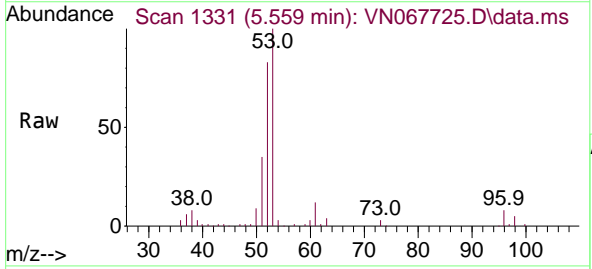
Instrument :
 MSVOA_N
 ClientSampled :



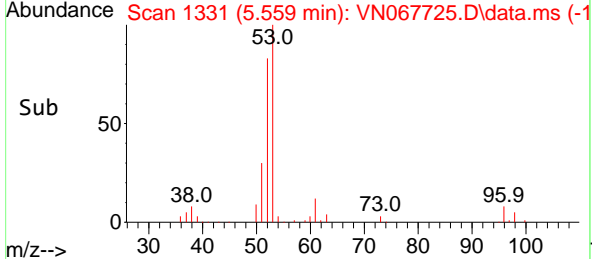
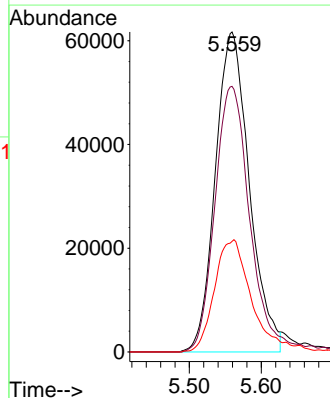
Tgt Ion: 56 Resp: 47449
 Ion Ratio Lower Upper
 56 100
 55 73.4 0.2 0.2#

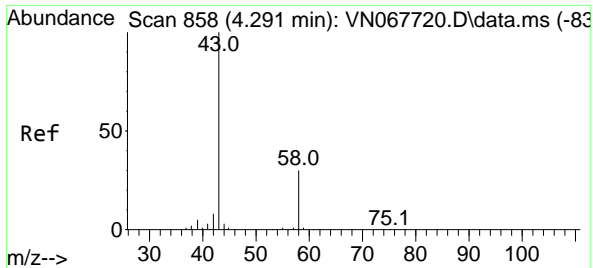


#14
 Acrylonitrile
 Concen: 91.125 ug/l
 RT: 5.559 min Scan# 1331
 Delta R.T. -0.000 min
 Lab File: VN067725.D
 Acq: 13 Jul 2021 18:37



Tgt Ion: 53 Resp: 202541
 Ion Ratio Lower Upper
 53 100
 52 85.4 41.3 123.7
 51 36.4 18.4 55.0

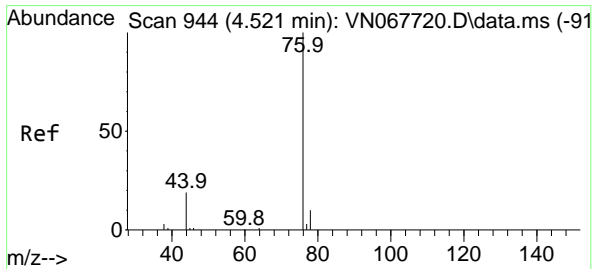
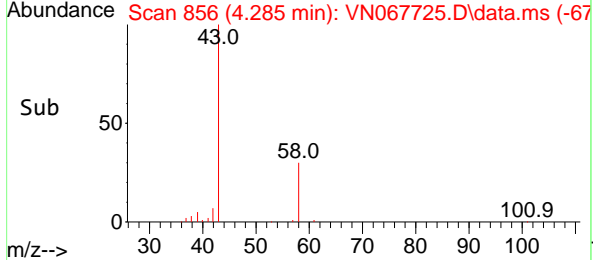
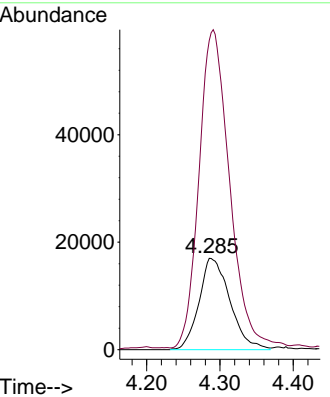
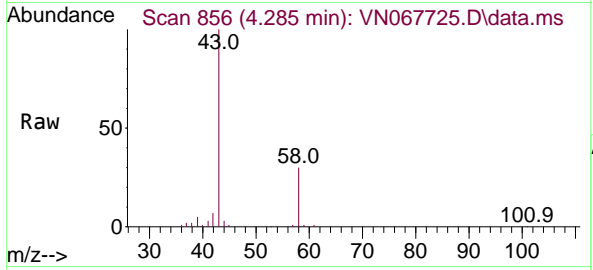




#15
 Acetone
 Concen: 90.622 ug/l
 RT: 4.285 min Scan# 856
 Delta R.T. -0.005 min
 Lab File: VN067725.D
 Acq: 13 Jul 2021 18:37

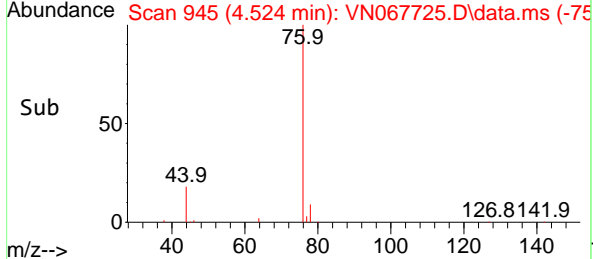
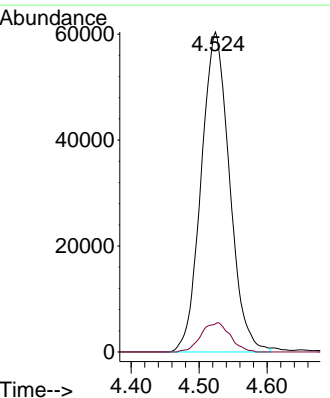
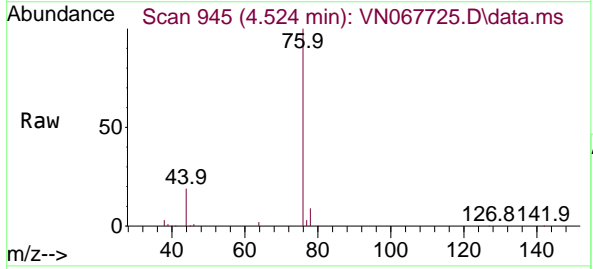
Instrument :
 MSVOA_N
 ClientSampled :

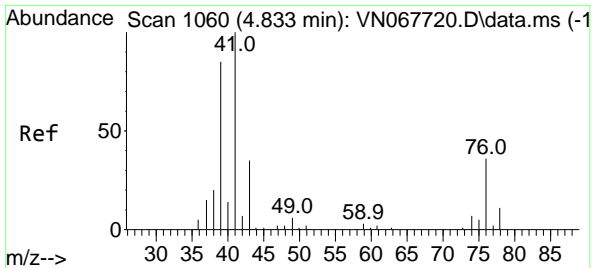
Tgt Ion: 58 Resp: 49931
 Ion Ratio Lower Upper
 58 100
 43 336.3 268.2 402.4



#16
 Carbon Disulfide
 Concen: 17.918 ug/l
 RT: 4.524 min Scan# 945
 Delta R.T. 0.003 min
 Lab File: VN067725.D
 Acq: 13 Jul 2021 18:37

Tgt Ion: 76 Resp: 175234
 Ion Ratio Lower Upper
 76 100
 78 8.8 7.9 11.9

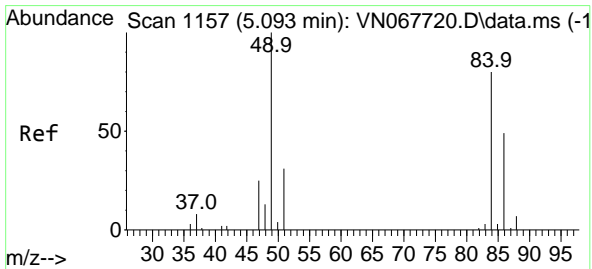
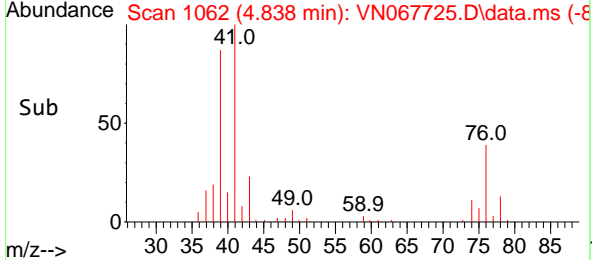
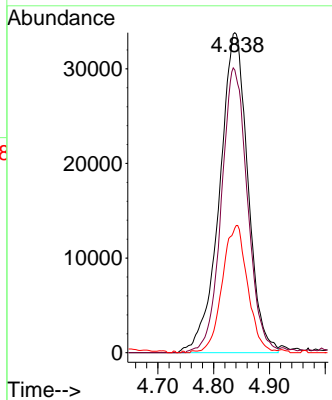
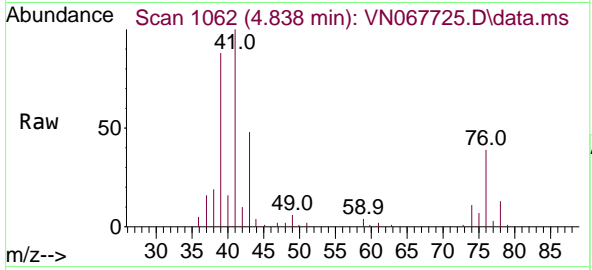




#17
 Allyl chloride
 Concen: 18.309 ug/l
 RT: 4.838 min Scan# 1062
 Delta R.T. 0.005 min
 Lab File: VN067725.D
 Acq: 13 Jul 2021 18:37

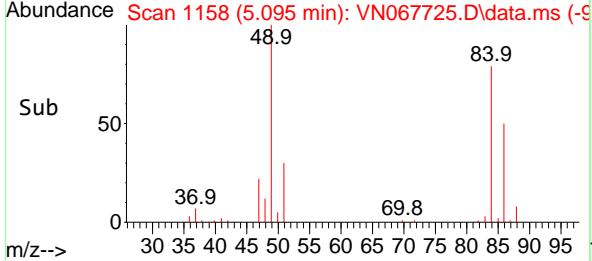
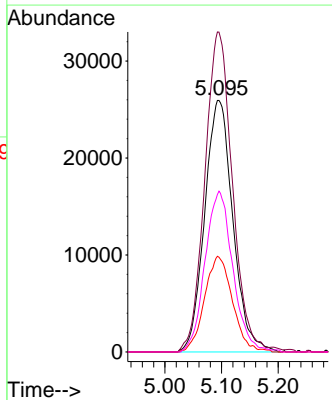
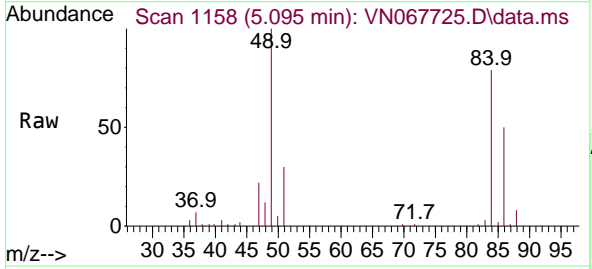
Instrument :
 MSVOA_N
 ClientSampled :

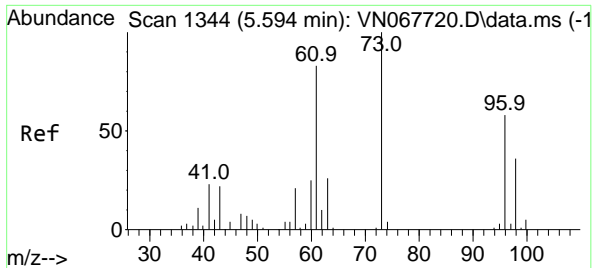
Tgt Ion	Resp	Lower	Upper
41	100		
39	88.3	42.4	127.3
76	39.0	17.9	53.8



#18
 Methylene Chloride
 Concen: 17.544 ug/l
 RT: 5.095 min Scan# 1158
 Delta R.T. 0.003 min
 Lab File: VN067725.D
 Acq: 13 Jul 2021 18:37

Tgt Ion	Resp	Lower	Upper
84	100		
49	127.2	100.5	150.7
51	37.7	30.7	46.1
86	63.9	49.4	74.2

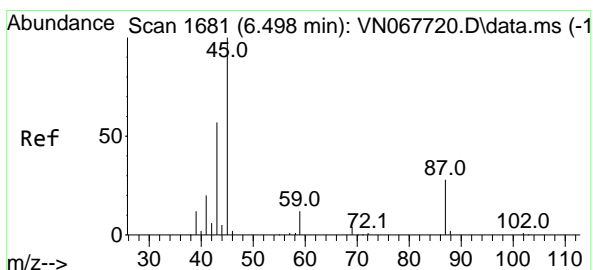
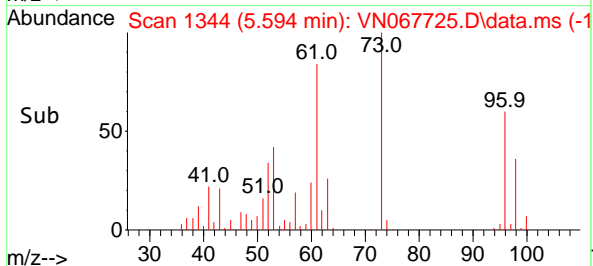
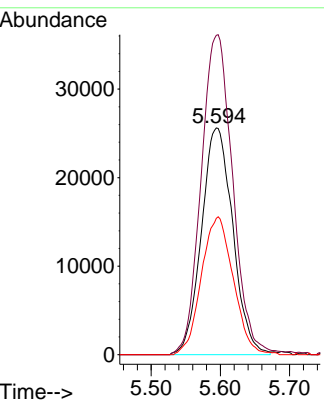
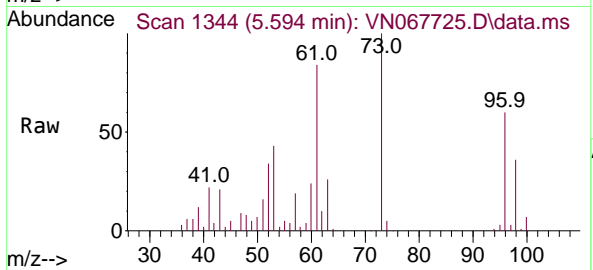




#19
 trans-1,2-Dichloroethene
 Concen: 18.254 ug/l
 RT: 5.594 min Scan# 1344
 Delta R.T. -0.000 min
 Lab File: VN067725.D
 Acq: 13 Jul 2021 18:37

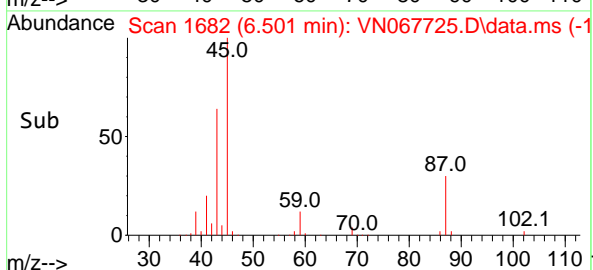
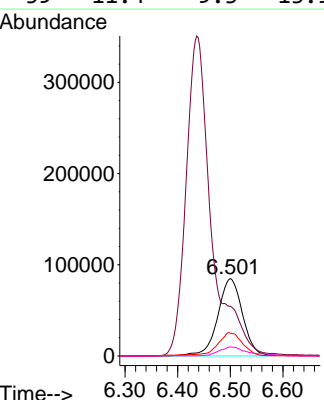
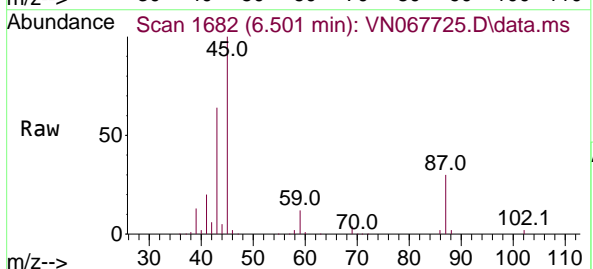
Instrument :
 MSVOA_N
 ClientSampled :

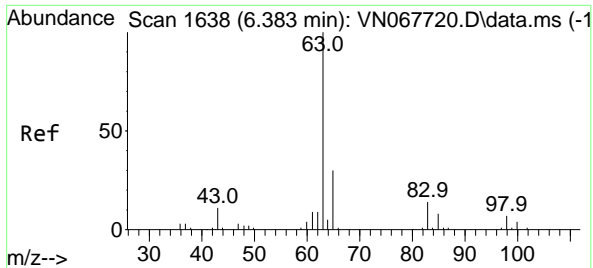
Tgt Ion	Resp	Lower	Upper
96	80606		
96	100		
61	140.9	114.3	171.5
98	60.1	49.3	73.9



#20
 Diisopropyl ether
 Concen: 17.953 ug/l
 RT: 6.501 min Scan# 1682
 Delta R.T. 0.003 min
 Lab File: VN067725.D
 Acq: 13 Jul 2021 18:37

Tgt Ion	Resp	Lower	Upper
45	277012		
45	100		
43	61.0	51.8	77.6
87	29.2	22.5	33.7
59	11.4	9.3	13.9

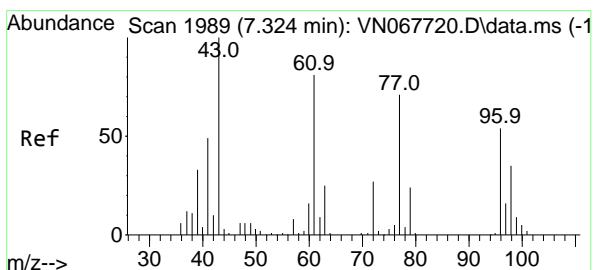
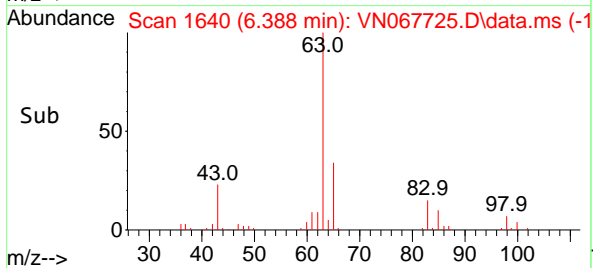
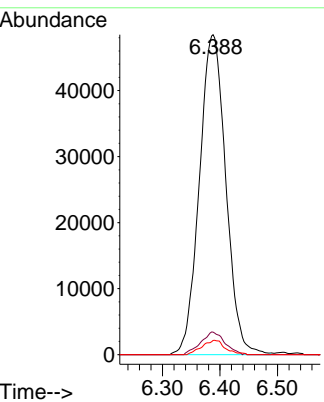
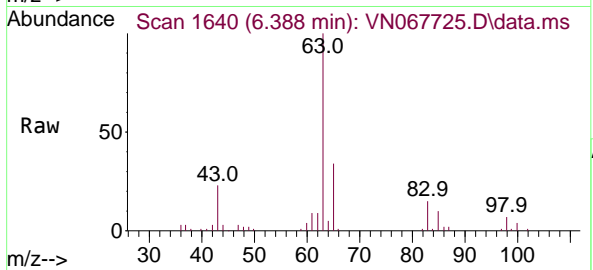




#21
 1,1-Dichloroethane
 Concen: 18.239 ug/l
 RT: 6.388 min Scan# 1640
 Delta R.T. 0.005 min
 Lab File: VN067725.D
 Acq: 13 Jul 2021 18:37

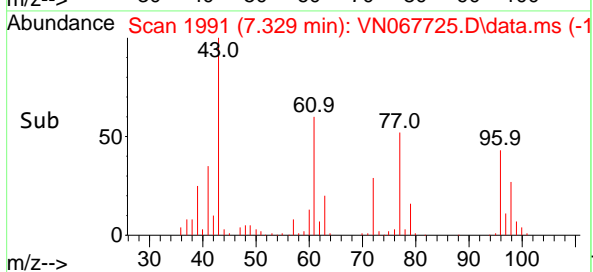
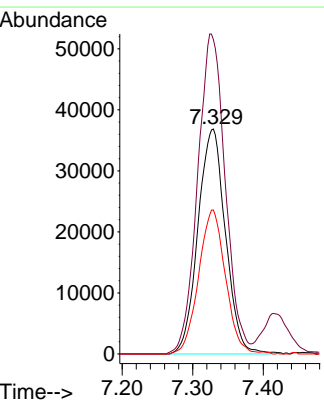
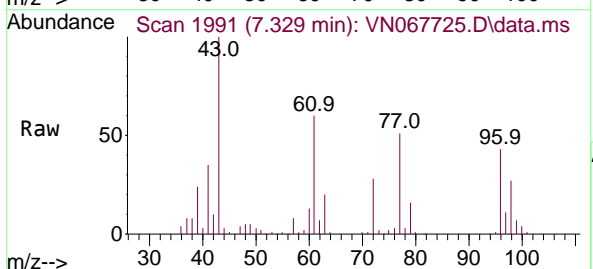
Instrument :
 MSVOA_N
 ClientSampled :

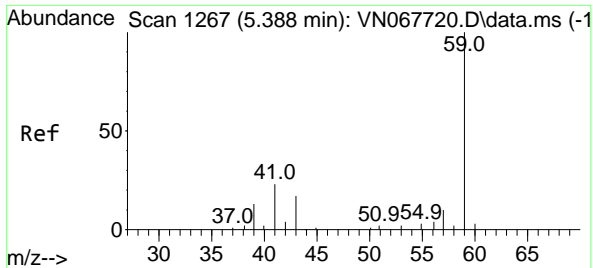
Tgt Ion	Resp	Lower	Upper
63	154816		
98	7.0	3.3	9.8
100	4.4	2.0	5.8



#22
 cis-1,2-Dichloroethene
 Concen: 18.361 ug/l
 RT: 7.329 min Scan# 1991
 Delta R.T. 0.005 min
 Lab File: VN067725.D
 Acq: 13 Jul 2021 18:37

Tgt Ion	Resp	Lower	Upper
96	100048		
61	142.6	121.2	181.8
98	62.3	51.8	77.8

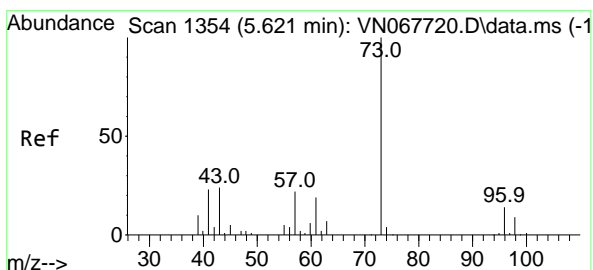
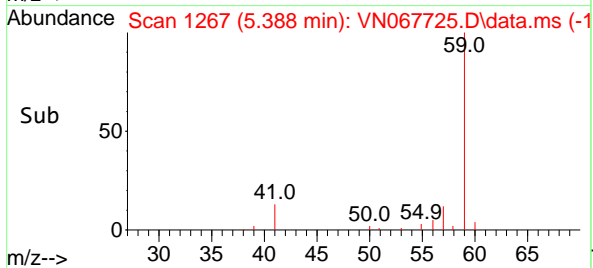
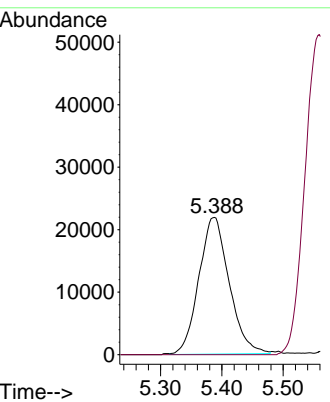
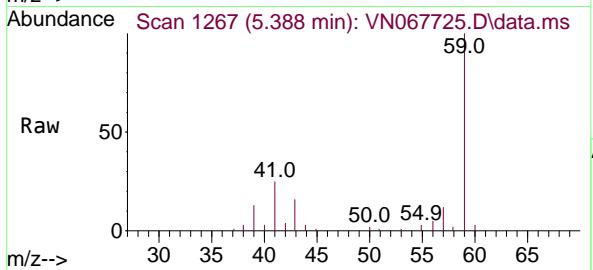




#23
 tert-Butyl Alcohol
 Concen: 92.093 ug/l
 RT: 5.388 min Scan# 1267
 Delta R.T. -0.000 min
 Lab File: VN067725.D
 Acq: 13 Jul 2021 18:37

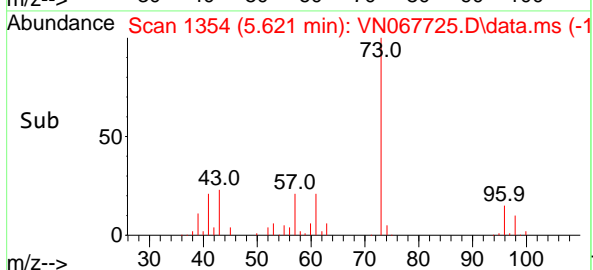
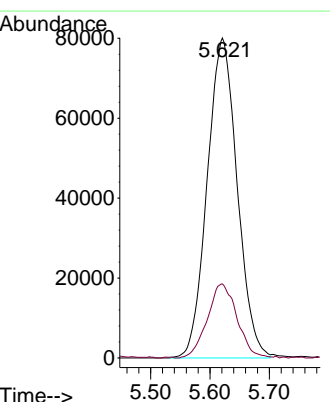
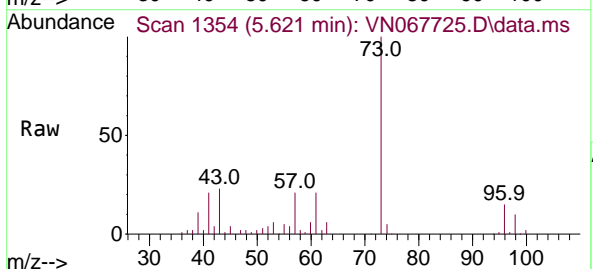
Instrument :
 MSVOA_N
 ClientSampled :

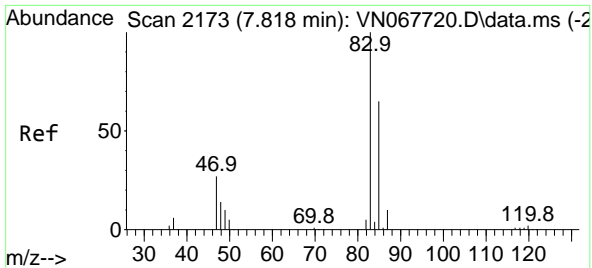
Tgt Ion: 59 Resp: 75451
 Ion Ratio Lower Upper
 59 100
 52 0.0 0.0 0.0



#24
 Methyl tert-Butyl Ether
 Concen: 18.366 ug/l
 RT: 5.621 min Scan# 1354
 Delta R.T. -0.000 min
 Lab File: VN067725.D
 Acq: 13 Jul 2021 18:37

Tgt Ion: 73 Resp: 280830
 Ion Ratio Lower Upper
 73 100
 43 22.9 18.6 27.8

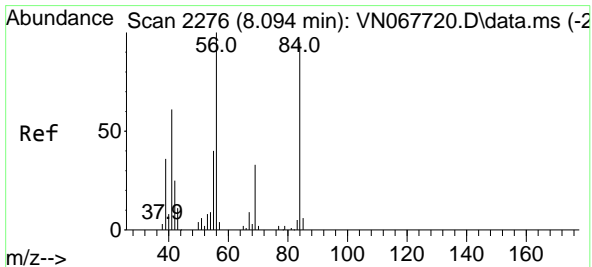
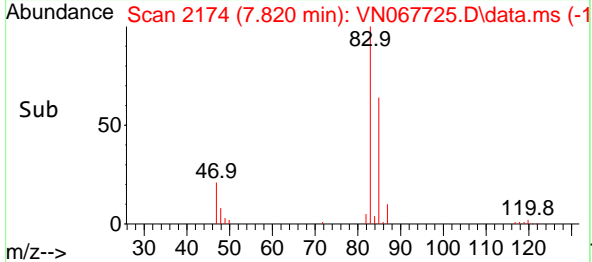
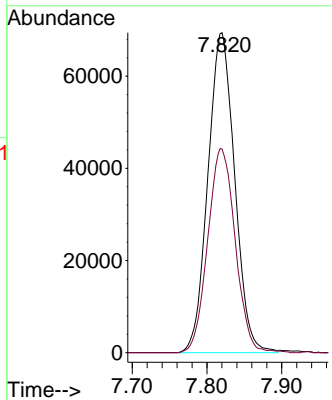
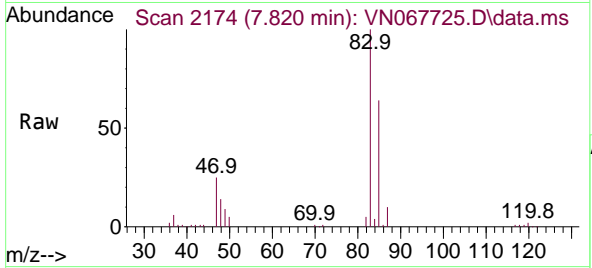




#25
 Chloroform
 Concen: 18.288 ug/l
 RT: 7.820 min Scan# 2174
 Delta R.T. 0.003 min
 Lab File: VN067725.D
 Acq: 13 Jul 2021 18:37

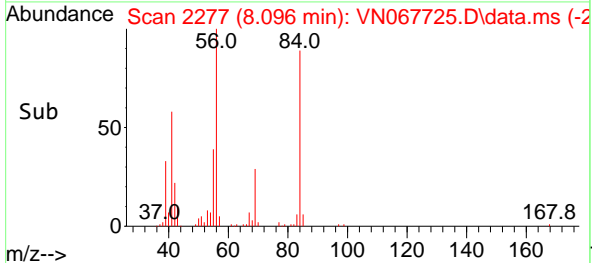
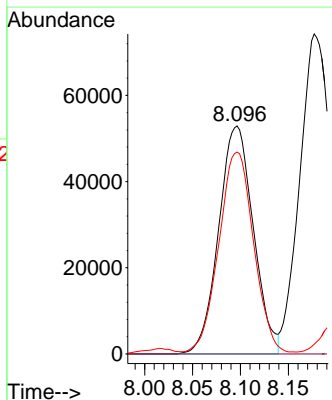
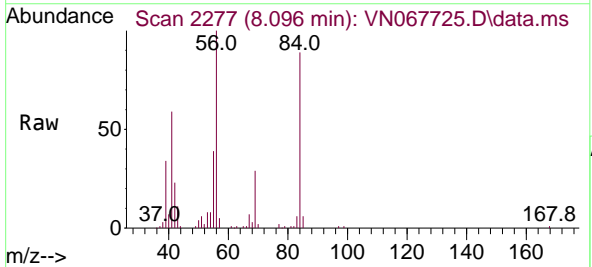
Instrument :
 MSVOA_N
 ClientSampled :

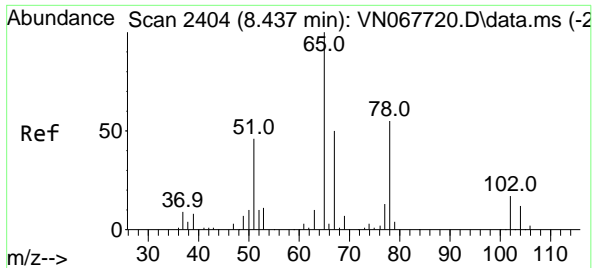
Tgt Ion: 83 Resp: 172742
 Ion Ratio Lower Upper
 83 100
 85 63.7 52.3 78.5



#26
 Cyclohexane
 Concen: 18.032 ug/l
 RT: 8.096 min Scan# 2277
 Delta R.T. 0.003 min
 Lab File: VN067725.D
 Acq: 13 Jul 2021 18:37

Tgt Ion: 56 Resp: 133371
 Ion Ratio Lower Upper
 56 100
 89 0.0 0.0 0.0
 84 89.3 71.4 107.0

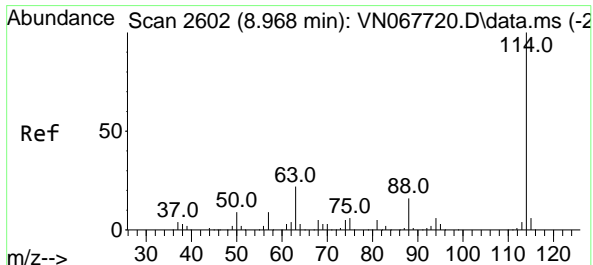
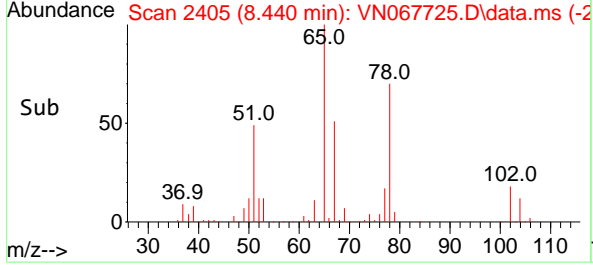
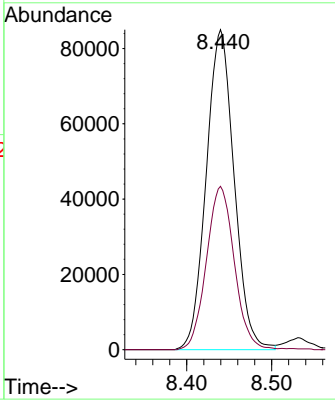
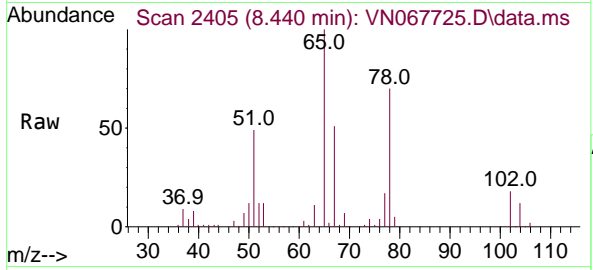




#27
 1,2-Dichloroethane-d4
 Concen: 31.459 ug/l
 RT: 8.440 min Scan# 2405
 Delta R.T. 0.003 min
 Lab File: VN067725.D
 Acq: 13 Jul 2021 18:37

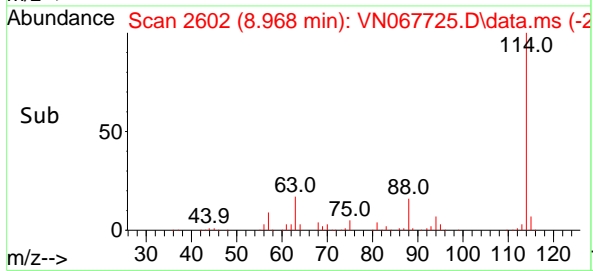
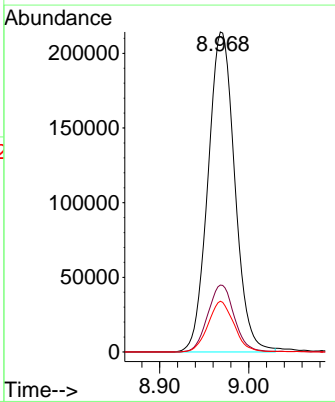
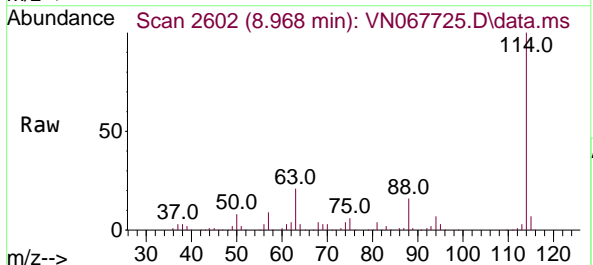
Instrument :
 MSVOA_N
 ClientSampled :

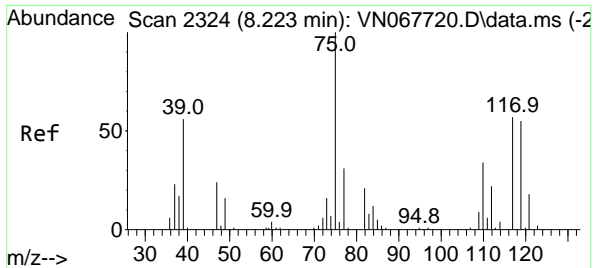
Tgt Ion: 65 Resp: 194036
 Ion Ratio Lower Upper
 65 100
 67 51.0 40.6 60.8



#28
 1,4-Difluorobenzene
 Concen: 30.000 ug/l
 RT: 8.968 min Scan# 2602
 Delta R.T. -0.000 min
 Lab File: VN067725.D
 Acq: 13 Jul 2021 18:37

Tgt Ion:114 Resp: 448397
 Ion Ratio Lower Upper
 114 100
 63 20.7 17.2 25.8
 88 15.3 12.4 18.6



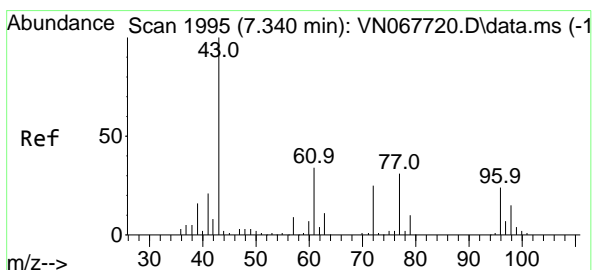
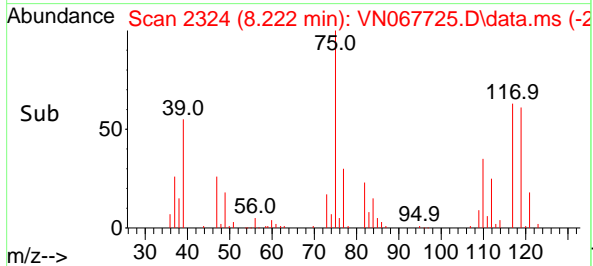
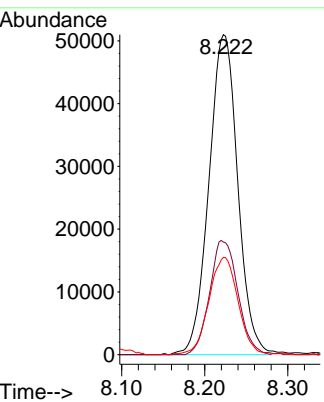
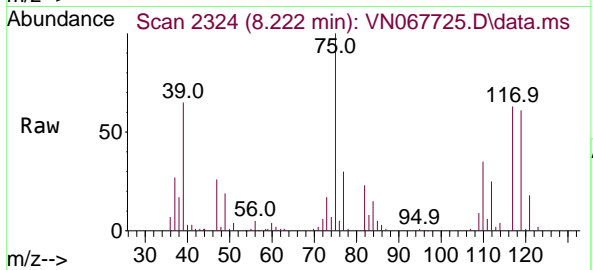


#29
 1,1-Dichloropropene
 Concen: 17.468 ug/l
 RT: 8.222 min Scan# 2324
 Delta R.T. -0.000 min
 Lab File: VN067725.D
 Acq: 13 Jul 2021 18:37

Instrument :
 MSVOA_N
 ClientSampled :

Tgt Ion: 75 Resp: 122890

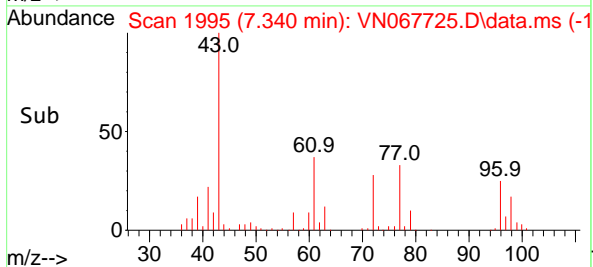
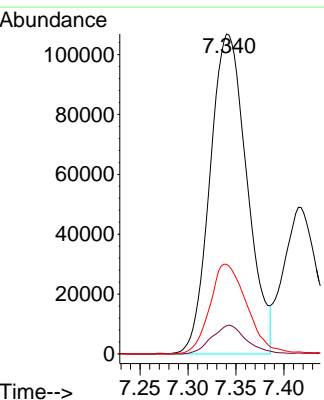
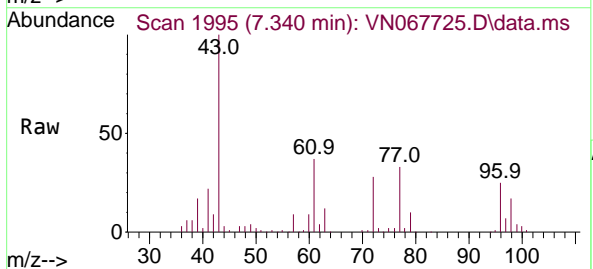
Ion	Ratio	Lower	Upper
75	100		
110	34.9	0.0	69.2
77	30.7	0.0	60.4

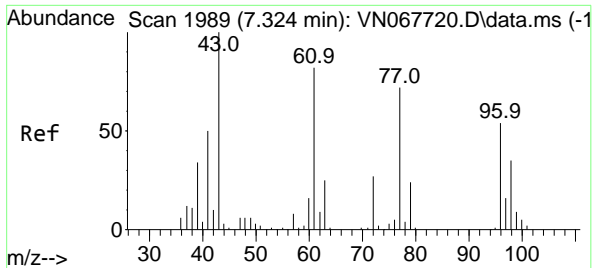


#30
 2-Butanone
 Concen: 87.899 ug/l
 RT: 7.340 min Scan# 1995
 Delta R.T. -0.000 min
 Lab File: VN067725.D
 Acq: 13 Jul 2021 18:37

Tgt Ion: 43 Resp: 286371

Ion	Ratio	Lower	Upper
43	100		
57	8.5	6.6	9.8
72	28.2	21.8	32.6

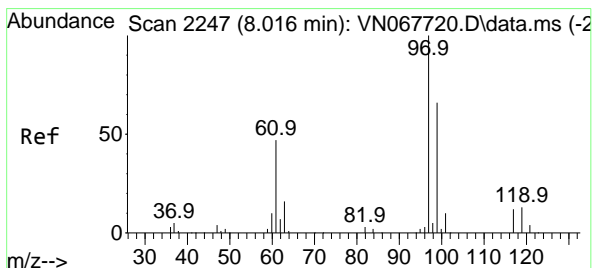
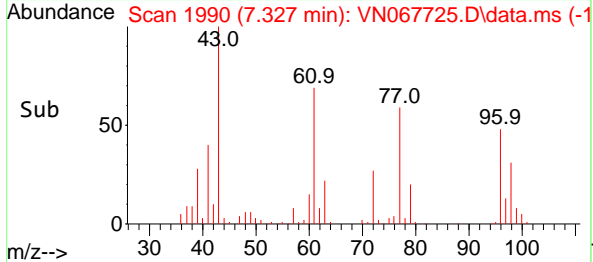
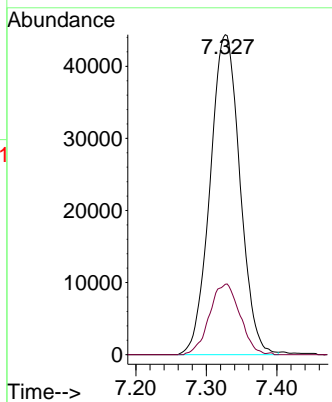
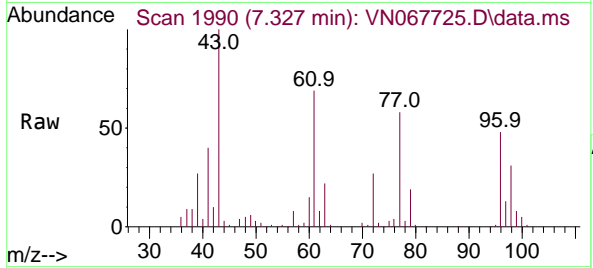




#31
 2,2-Dichloropropane
 Concen: 16.623 ug/l
 RT: 7.327 min Scan# 1990
 Delta R.T. 0.003 min
 Lab File: VN067725.D
 Acq: 13 Jul 2021 18:37

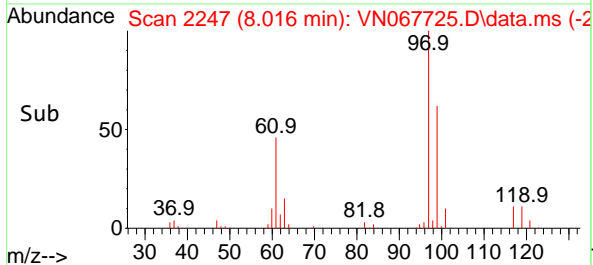
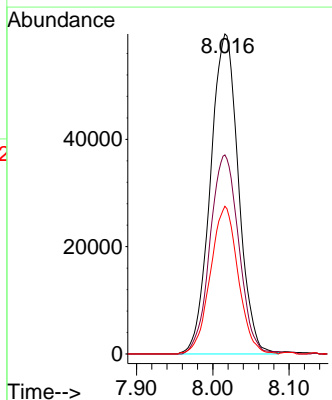
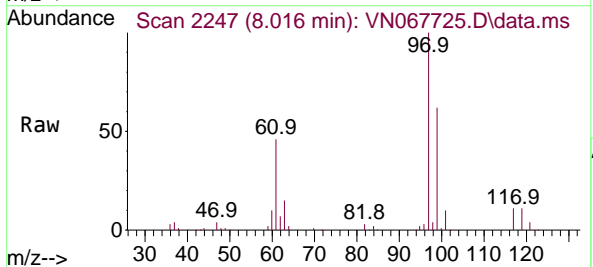
Instrument :
 MSVOA_N
 ClientSampled :

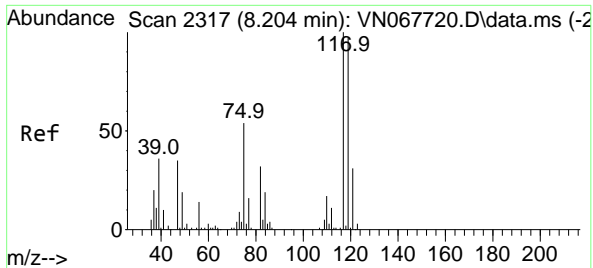
Tgt Ion: 77 Resp: 130468
 Ion Ratio Lower Upper
 77 100
 97 22.5 17.8 26.6



#32
 1,1,1-Trichloroethane
 Concen: 17.618 ug/l
 RT: 8.016 min Scan# 2247
 Delta R.T. -0.000 min
 Lab File: VN067725.D
 Acq: 13 Jul 2021 18:37

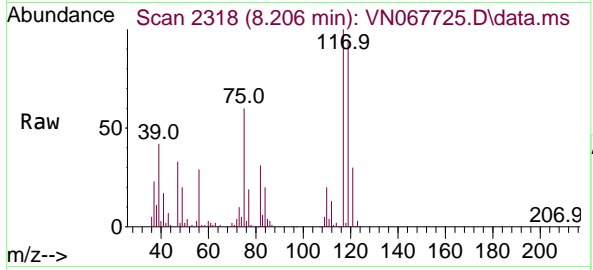
Tgt Ion: 97 Resp: 152212
 Ion Ratio Lower Upper
 97 100
 99 63.7 51.6 77.4
 61 45.7 37.6 56.4



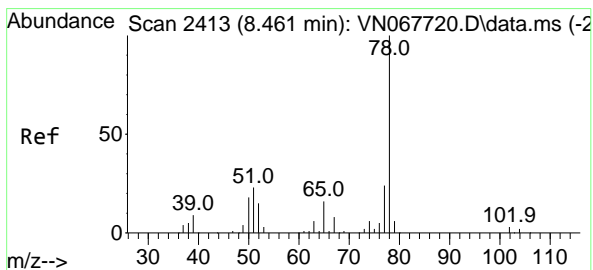
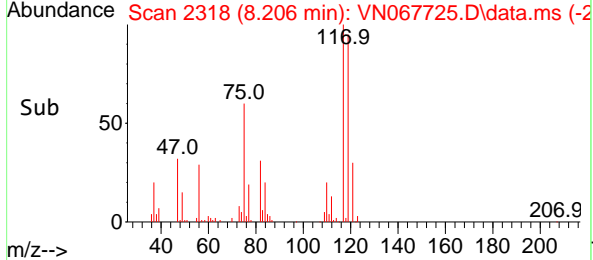
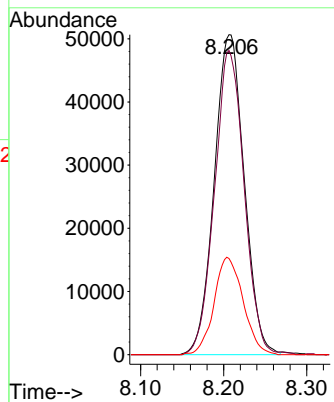


#33
 Carbon Tetrachloride
 Concen: 17.226 ug/l
 RT: 8.206 min Scan# 2318
 Delta R.T. 0.003 min
 Lab File: VN067725.D
 Acq: 13 Jul 2021 18:37

Instrument :
 MSVOA_N
 ClientSampled :

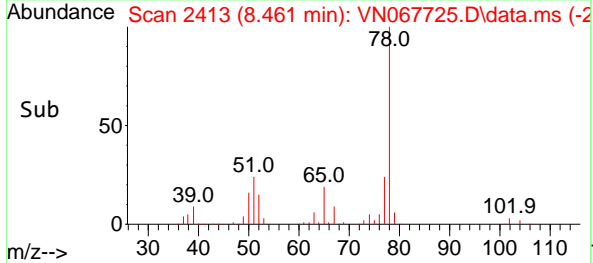
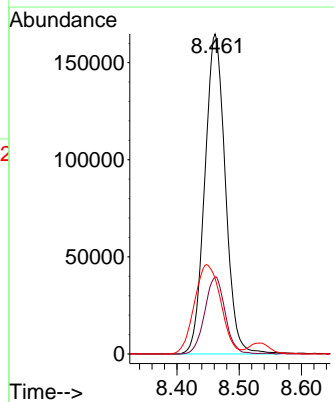
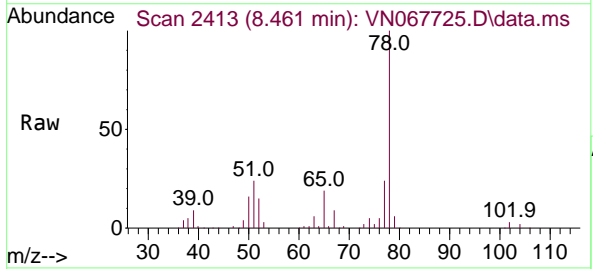


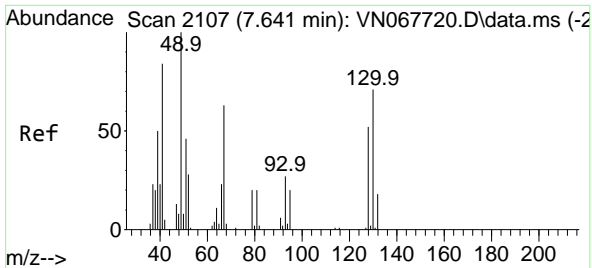
Tgt Ion:117 Resp: 127074
 Ion Ratio Lower Upper
 117 100
 119 95.1 77.6 116.4
 121 30.0 24.6 36.8



#34
 Benzene
 Concen: 17.975 ug/l
 RT: 8.461 min Scan# 2413
 Delta R.T. -0.000 min
 Lab File: VN067725.D
 Acq: 13 Jul 2021 18:37

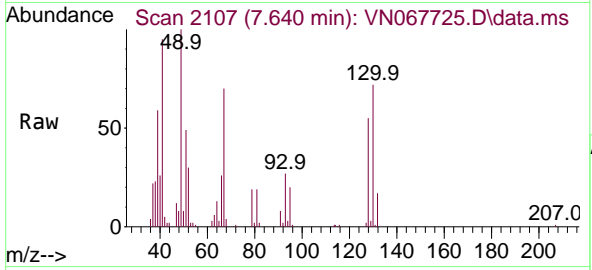
Tgt Ion: 78 Resp: 377996
 Ion Ratio Lower Upper
 78 100
 77 24.0 19.1 28.7
 51 23.2 18.2 27.4





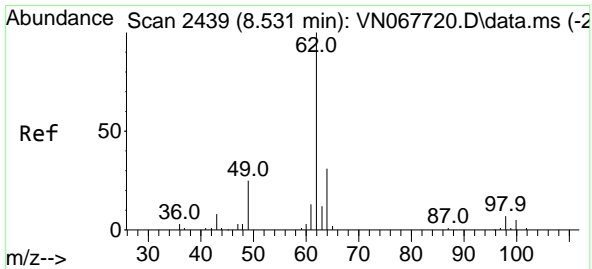
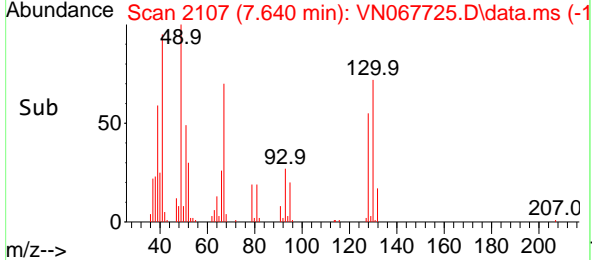
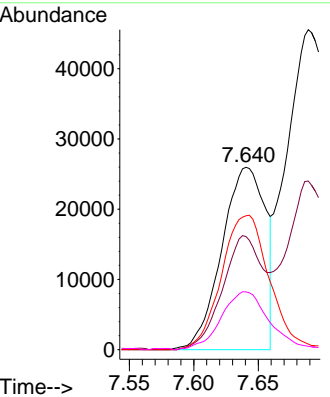
#35
 Methacrylonitrile
 Concen: 18.221 ug/l
 RT: 7.640 min Scan# 2107
 Delta R.T. -0.000 min
 Lab File: VN067725.D
 Acq: 13 Jul 2021 18:37

Instrument :
 MSVOA_N
 ClientSampled :

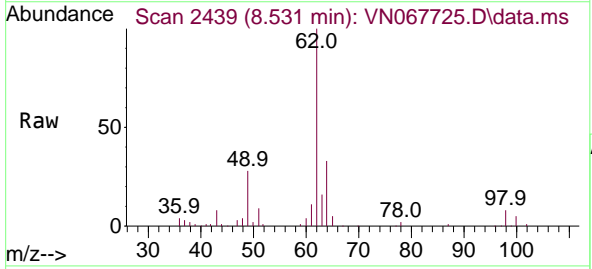


Tgt Ion: 41 Resp: 61023

Ion	Ratio	Lower	Upper
41	100		
39	62.0	29.6	88.9
67	73.4	37.4	112.2
52	31.1	16.4	49.2

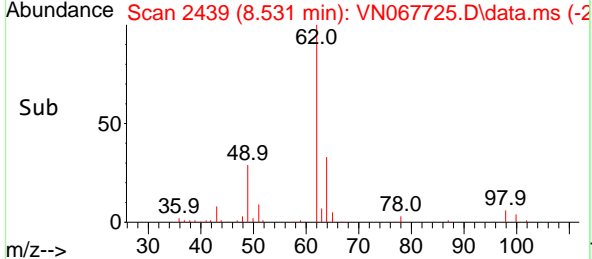
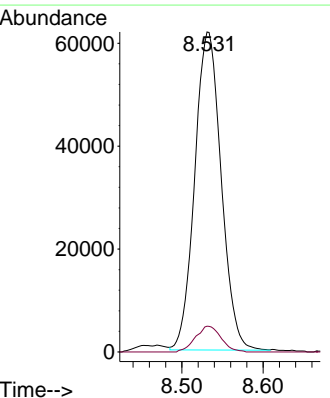


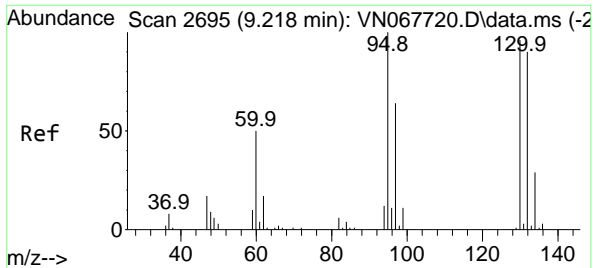
#36
 1,2-Dichloroethane
 Concen: 17.848 ug/l
 RT: 8.531 min Scan# 2439
 Delta R.T. -0.000 min
 Lab File: VN067725.D
 Acq: 13 Jul 2021 18:37



Tgt Ion: 62 Resp: 139725

Ion	Ratio	Lower	Upper
62	100		
98	7.8	6.2	9.2

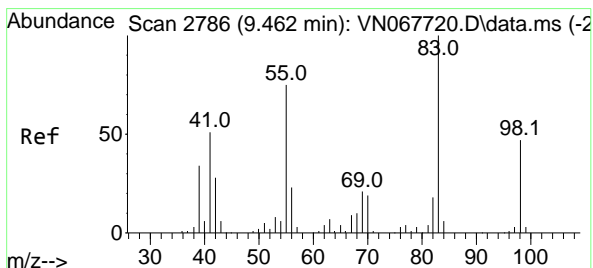
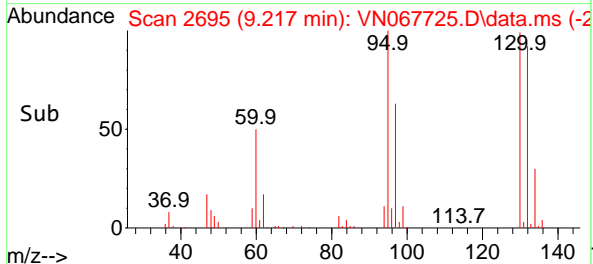
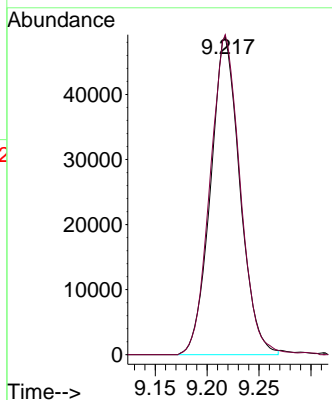
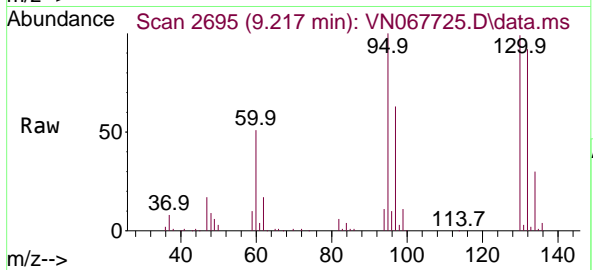




#37
 Trichloroethene
 Concen: 17.571 ug/l
 RT: 9.217 min Scan# 2695
 Delta R.T. -0.000 min
 Lab File: VN067725.D
 Acq: 13 Jul 2021 18:37

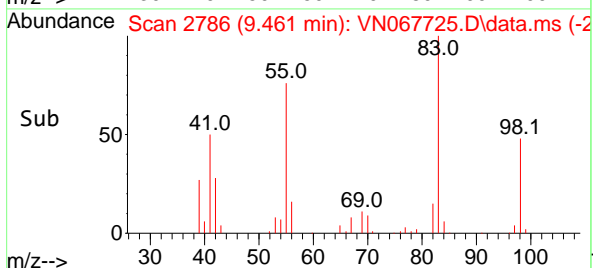
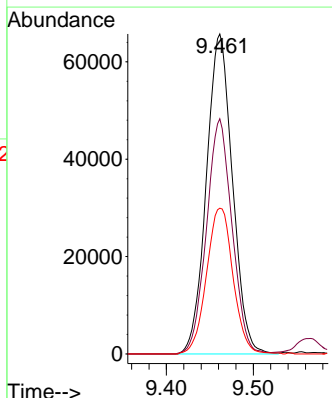
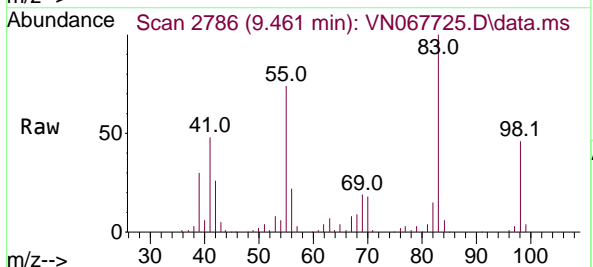
Instrument :
 MSVOA_N
 ClientSampled :

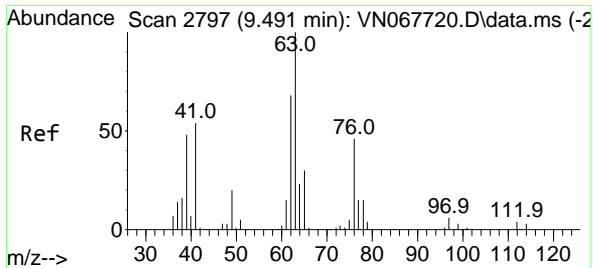
Tgt Ion:130 Resp: 95995
 Ion Ratio Lower Upper
 130 100
 95 100.7 83.2 124.8



#38
 Methylcyclohexane
 Concen: 17.603 ug/l
 RT: 9.461 min Scan# 2786
 Delta R.T. -0.000 min
 Lab File: VN067725.D
 Acq: 13 Jul 2021 18:37

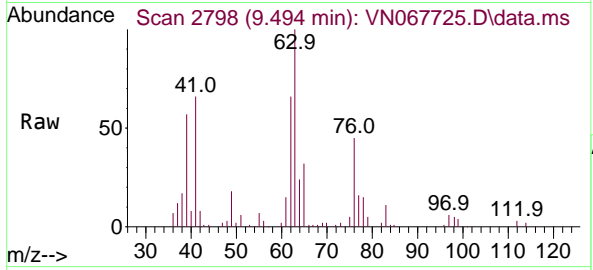
Tgt Ion: 83 Resp: 137162
 Ion Ratio Lower Upper
 83 100
 55 72.0 37.4 112.2
 98 46.3 23.5 70.6



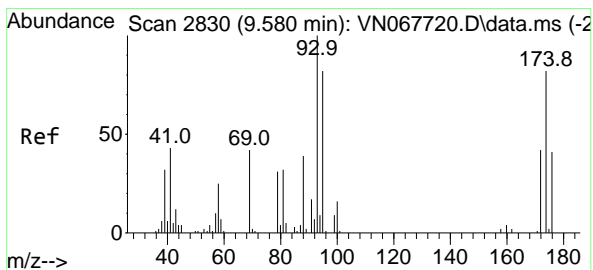
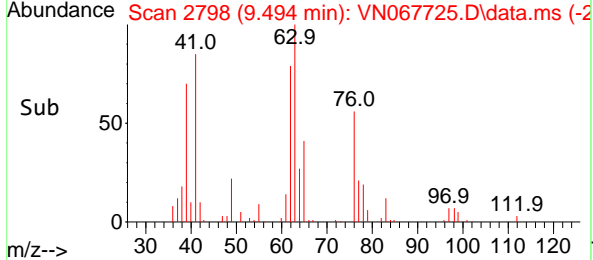
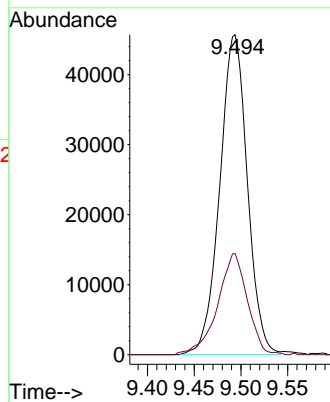


#39
 1,2-Dichloropropane
 Concen: 17.535 ug/l
 RT: 9.494 min Scan# 2798
 Delta R.T. 0.003 min
 Lab File: VN067725.D
 Acq: 13 Jul 2021 18:37

Instrument :
 MSVOA_N
 ClientSampled :

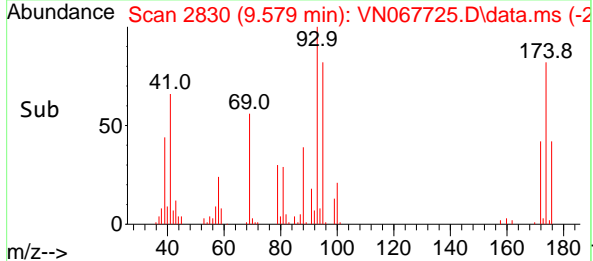
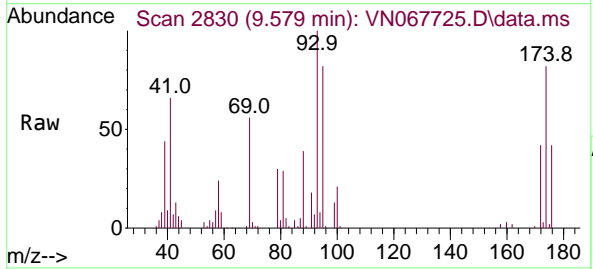
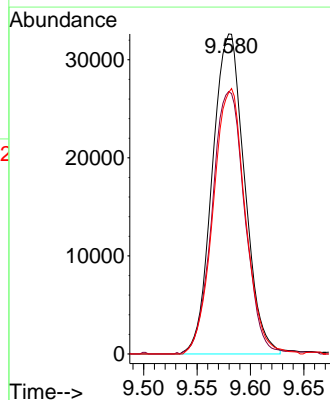


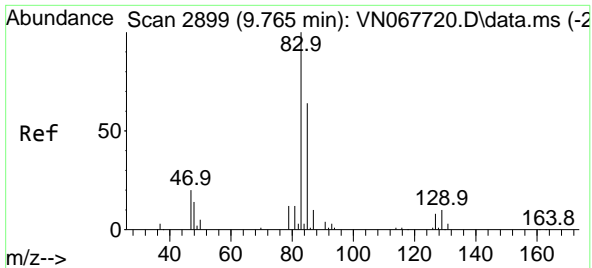
Tgt Ion: 63 Resp: 94037
 Ion Ratio Lower Upper
 63 100
 65 31.1 24.3 36.5



#40
 Dibromomethane
 Concen: 17.777 ug/l
 RT: 9.579 min Scan# 2830
 Delta R.T. -0.000 min
 Lab File: VN067725.D
 Acq: 13 Jul 2021 18:37

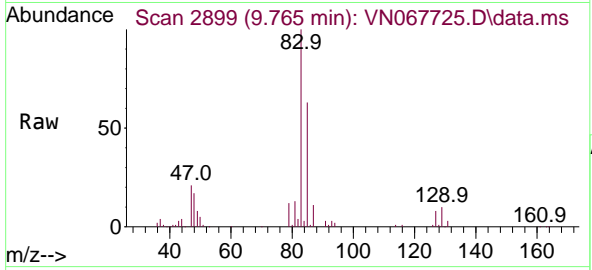
Tgt Ion: 93 Resp: 68556
 Ion Ratio Lower Upper
 93 100
 95 82.8 0.0 165.4
 174 82.9 0.0 163.0





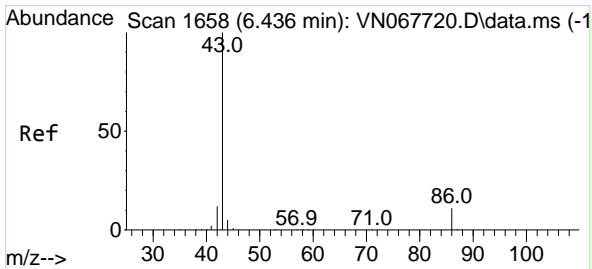
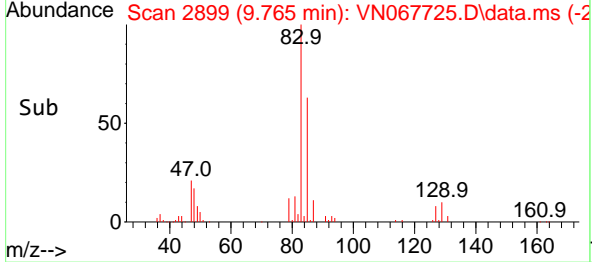
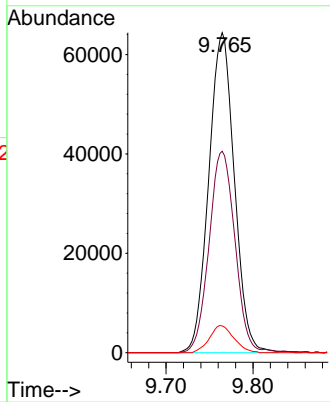
#41
 Bromodichloromethane
 Concen: 17.389 ug/l
 RT: 9.765 min Scan# 2899
 Delta R.T. -0.000 min
 Lab File: VN067725.D
 Acq: 13 Jul 2021 18:37

Instrument :
 MSVOA_N
 ClientSampled :

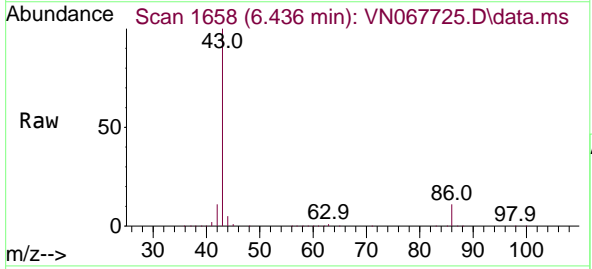


Tgt Ion: 83 Resp: 131636

Ion	Ratio	Lower	Upper
83	100		
85	63.0	51.3	76.9
127	8.4	6.6	10.0

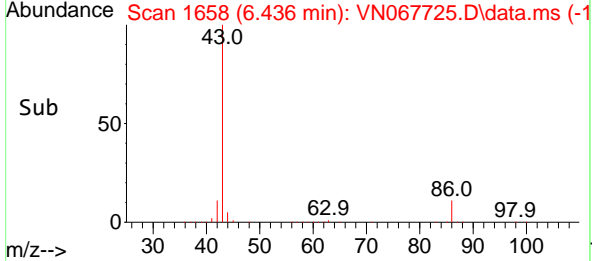
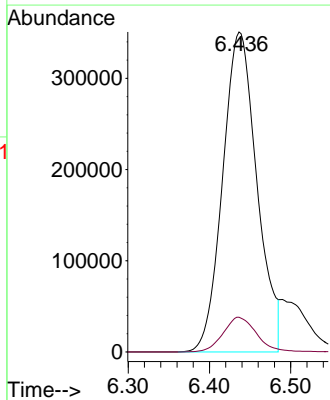


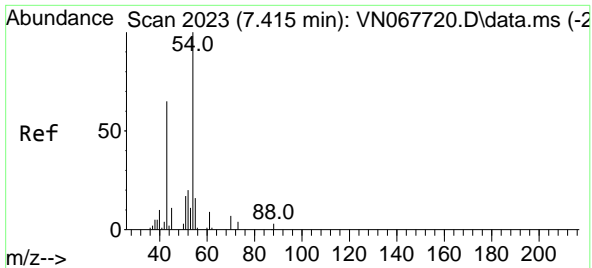
#42
 Vinyl Acetate
 Concen: 79.276 ug/l
 RT: 6.436 min Scan# 1658
 Delta R.T. -0.000 min
 Lab File: VN067725.D
 Acq: 13 Jul 2021 18:37



Tgt Ion: 43 Resp: 1027500

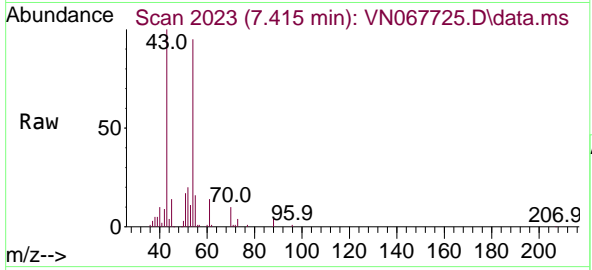
Ion	Ratio	Lower	Upper
43	100		
86	10.6	8.2	12.2



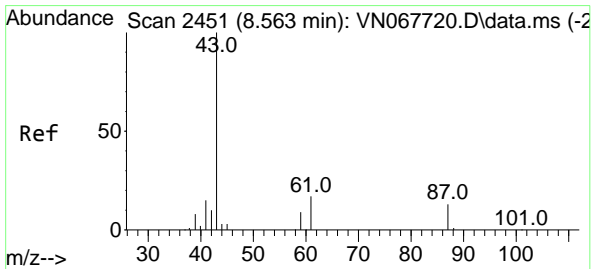
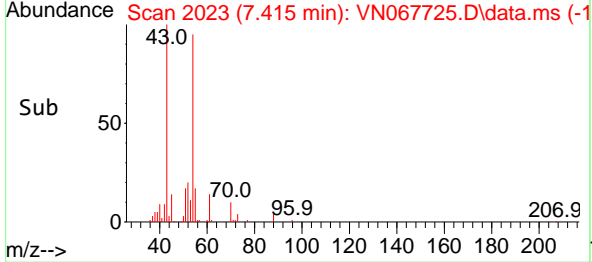
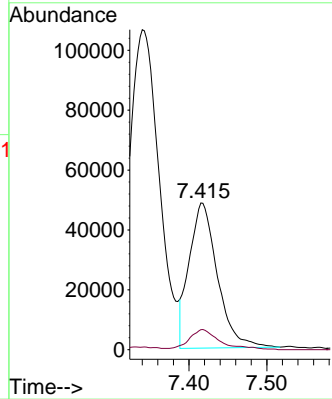


#43
 Ethyl Acetate
 Concen: 18.511 ug/l
 RT: 7.415 min Scan# 2023
 Delta R.T. -0.000 min
 Lab File: VN067725.D
 Acq: 13 Jul 2021 18:37

Instrument :
 MSVOA_N
 ClientSampled :

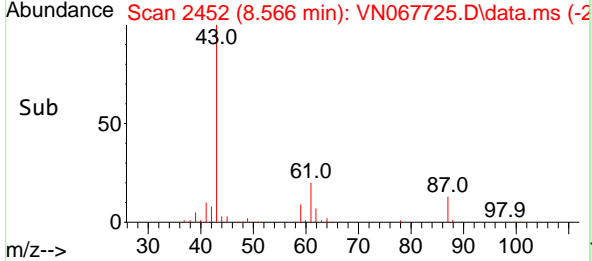
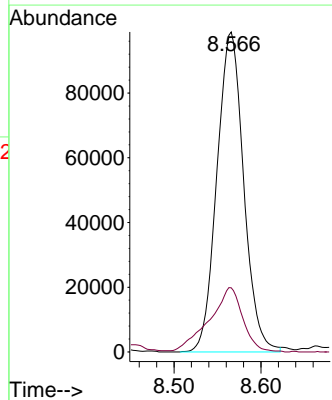
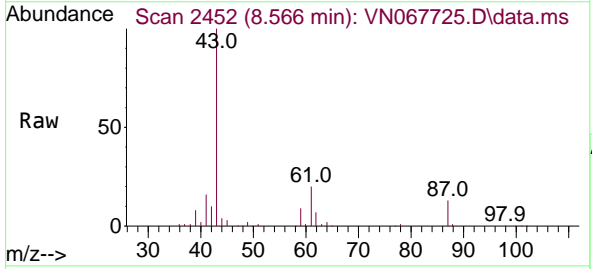


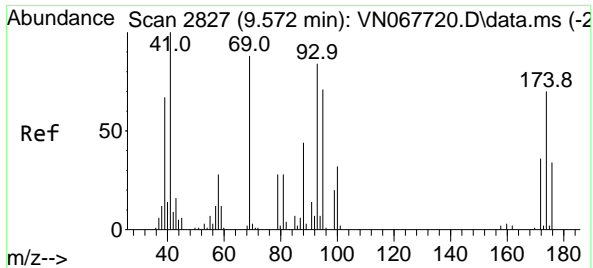
Tgt Ion: 43 Resp: 121925
 Ion Ratio Lower Upper
 43 100
 45 11.8 10.5 15.7



#44
 Isopropyl Acetate
 Concen: 17.695 ug/l
 RT: 8.566 min Scan# 2452
 Delta R.T. 0.003 min
 Lab File: VN067725.D
 Acq: 13 Jul 2021 18:37

Tgt Ion: 43 Resp: 211620
 Ion Ratio Lower Upper
 43 100
 61 24.2 20.4 30.6

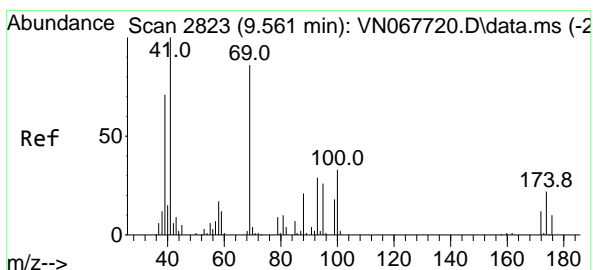
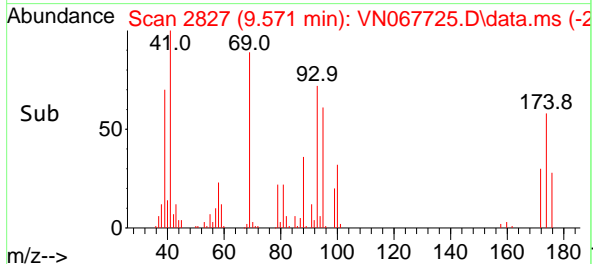
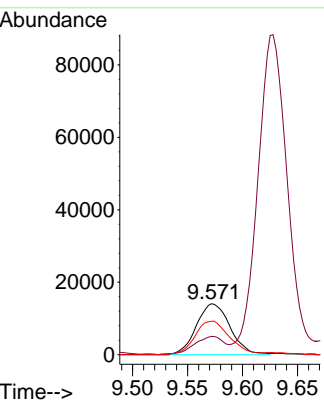
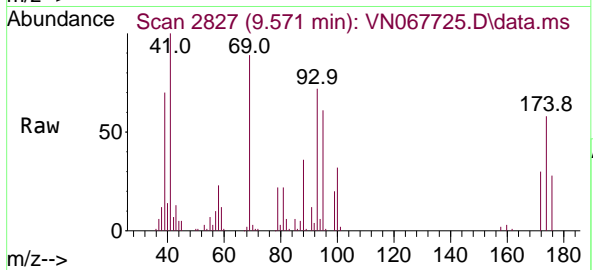




#45
 1,4-Dioxane
 Concen: 330.972 ug/l
 RT: 9.571 min Scan# 2827
 Delta R.T. -0.000 min
 Lab File: VN067725.D
 Acq: 13 Jul 2021 18:37

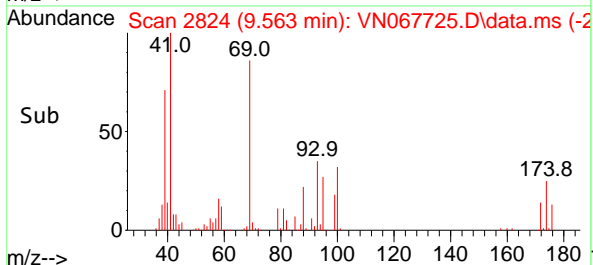
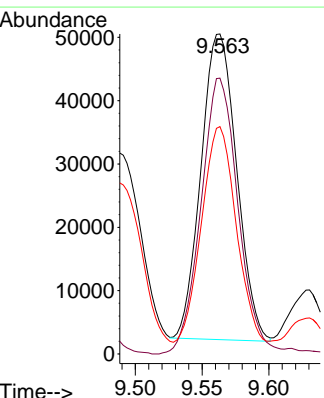
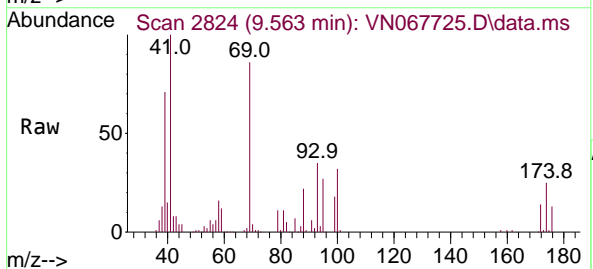
Instrument :
 MSVOA_N
 ClientSampled :

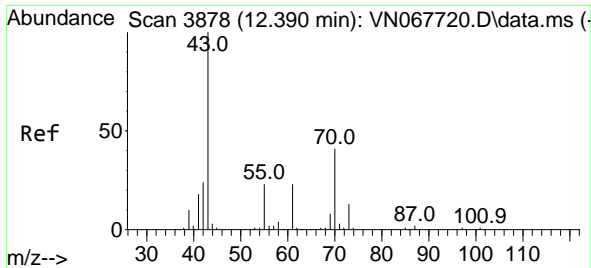
Tgt Ion	Resp	Lower	Upper
88	29974		
88	100		
43	32.1	26.9	40.3
58	67.2	52.2	78.4



#46
 Methyl methacrylate
 Concen: 17.388 ug/l
 RT: 9.563 min Scan# 2824
 Delta R.T. 0.003 min
 Lab File: VN067725.D
 Acq: 13 Jul 2021 18:37

Tgt Ion	Resp	Lower	Upper
41	89771		
41	100		
69	89.6	43.0	128.8
39	70.6	35.5	106.7

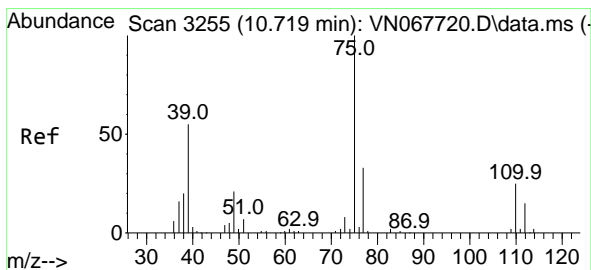
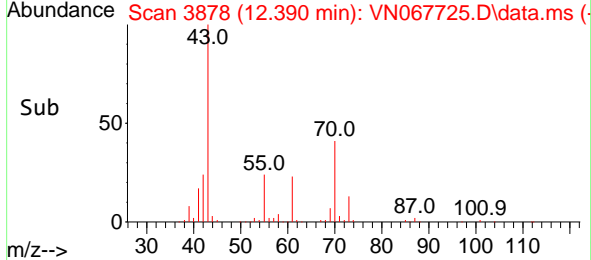
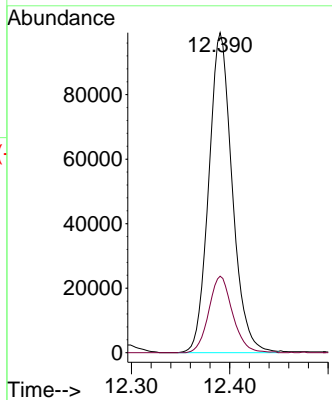
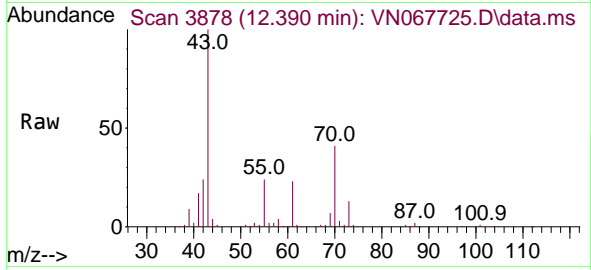




#47
 n-amy1 Acetate
 Concen: 16.738 ug/l
 RT: 12.390 min Scan# 3878
 Delta R.T. -0.000 min
 Lab File: VN067725.D
 Acq: 13 Jul 2021 18:37

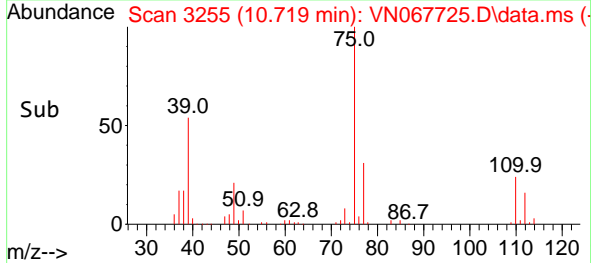
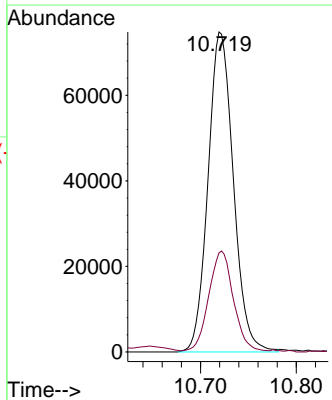
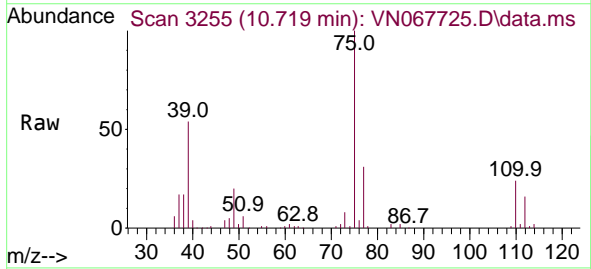
Instrument :
 MSVOA_N
 ClientSampled :

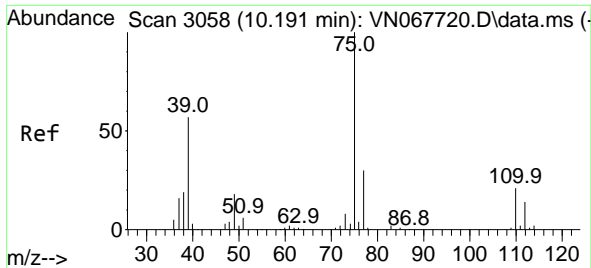
Tgt Ion: 43 Resp: 164319
 Ion Ratio Lower Upper
 43 100
 55 24.2 19.0 28.6



#48
 t-1,3-Dichloropropene
 Concen: 16.821 ug/l
 RT: 10.719 min Scan# 3255
 Delta R.T. -0.000 min
 Lab File: VN067725.D
 Acq: 13 Jul 2021 18:37

Tgt Ion: 75 Resp: 137223
 Ion Ratio Lower Upper
 75 100
 77 30.5 27.0 40.4

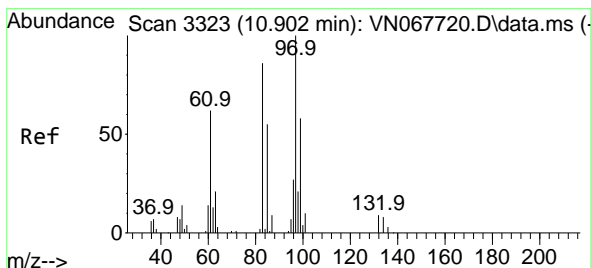
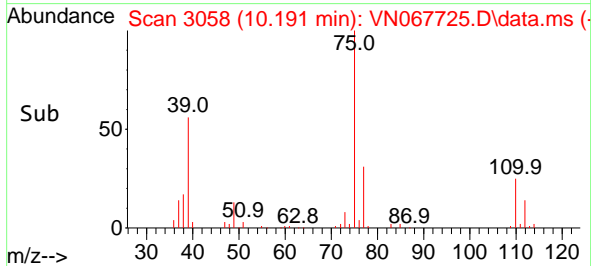
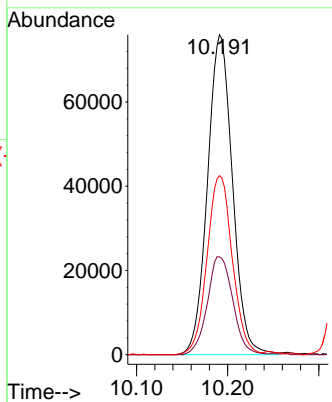
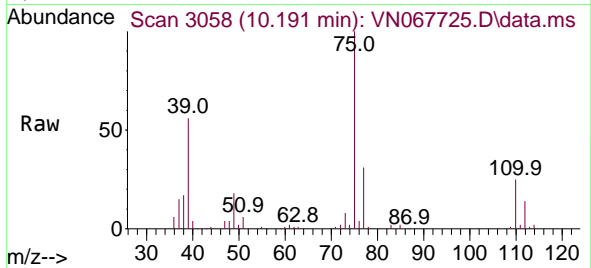




#49
 cis-1,3-Dichloropropene
 Concen: 16.718 ug/l
 RT: 10.191 min Scan# 3058
 Delta R.T. -0.000 min
 Lab File: VN067725.D
 Acq: 13 Jul 2021 18:37

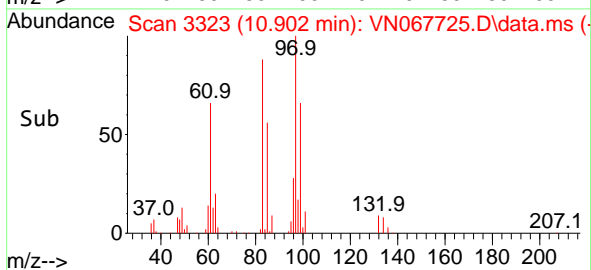
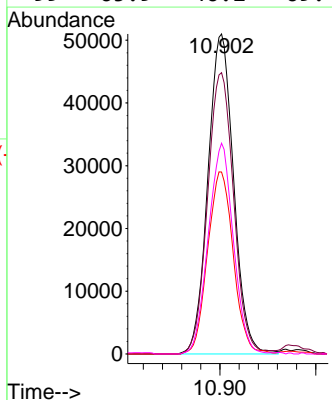
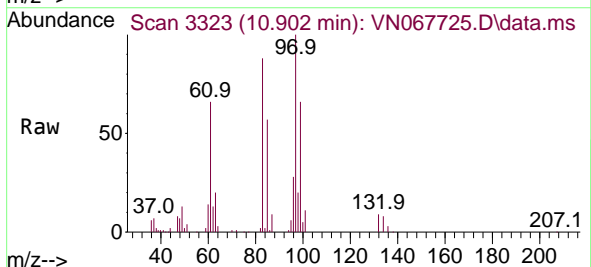
Instrument :
 MSVOA_N
 ClientSampled :

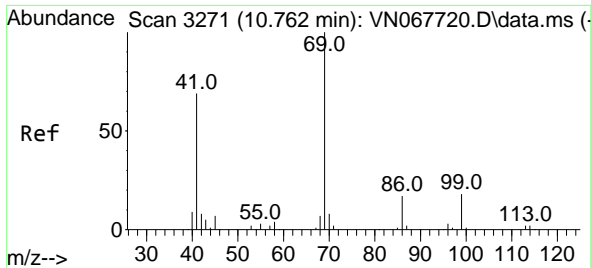
Tgt Ion	Resp	Lower	Upper
75	144770		
75	100		
77	30.6	23.8	35.6
39	55.8	45.3	67.9



#50
 1,1,2-Trichloroethane
 Concen: 17.256 ug/l
 RT: 10.902 min Scan# 3323
 Delta R.T. -0.000 min
 Lab File: VN067725.D
 Acq: 13 Jul 2021 18:37

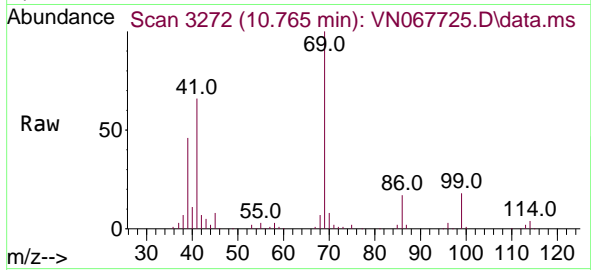
Tgt Ion	Resp	Lower	Upper
97	94968		
97	100		
83	87.9	69.0	103.4
85	56.9	43.8	65.8
99	65.9	46.2	69.4



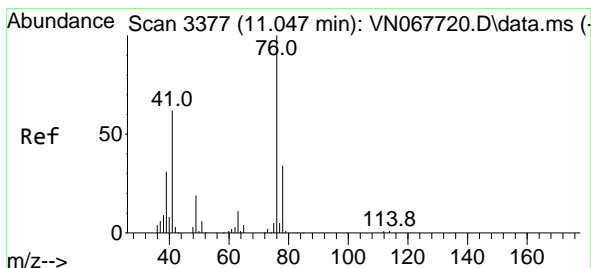
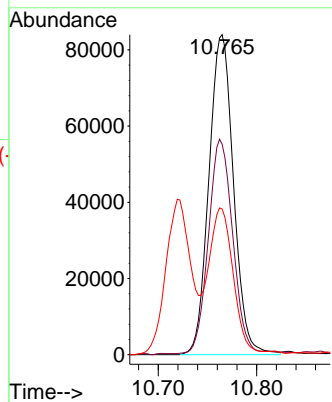
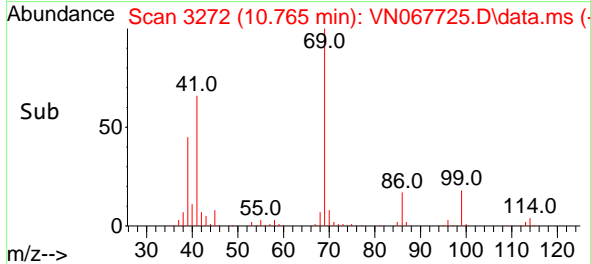


#51
 Ethyl methacrylate
 Concen: 17.105 ug/l
 RT: 10.765 min Scan# 3272
 Delta R.T. 0.003 min
 Lab File: VN067725.D
 Acq: 13 Jul 2021 18:37

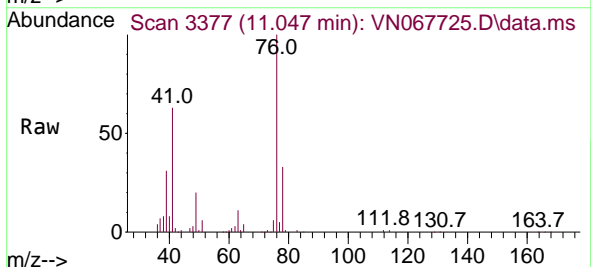
Instrument :
 MSVOA_N
 ClientSampled :



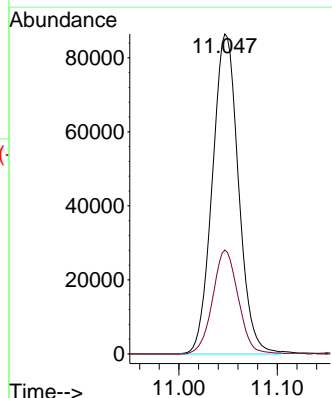
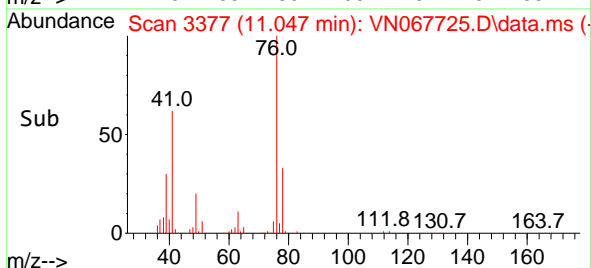
Tgt Ion: 69 Resp: 146387
 Ion Ratio Lower Upper
 69 100
 41 65.4 34.3 102.9
 39 44.8 23.7 71.1

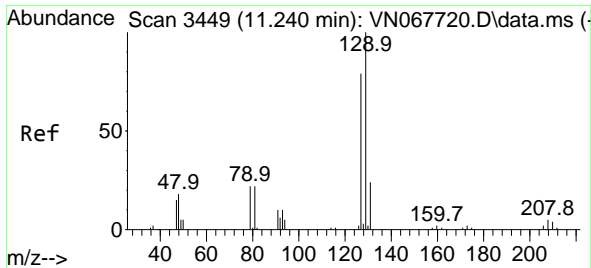


#52
 1,3-Dichloropropane
 Concen: 17.514 ug/l
 RT: 11.047 min Scan# 3377
 Delta R.T. -0.000 min
 Lab File: VN067725.D
 Acq: 13 Jul 2021 18:37



Tgt Ion: 76 Resp: 159376
 Ion Ratio Lower Upper
 76 100
 78 31.7 0.0 67.0

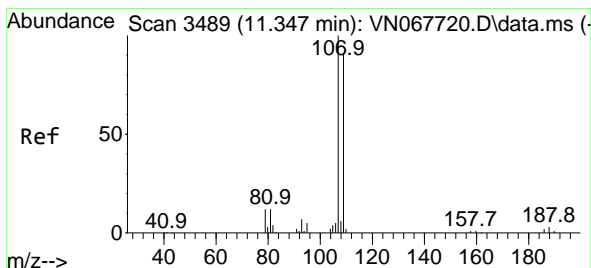
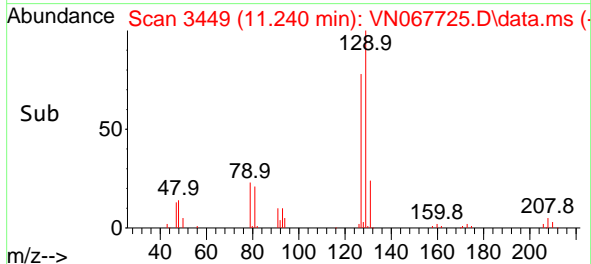
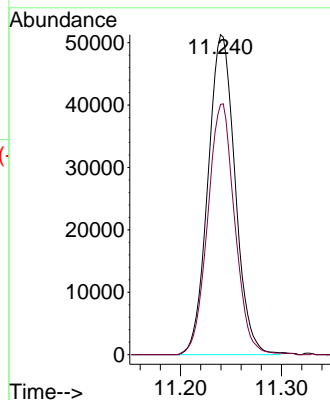
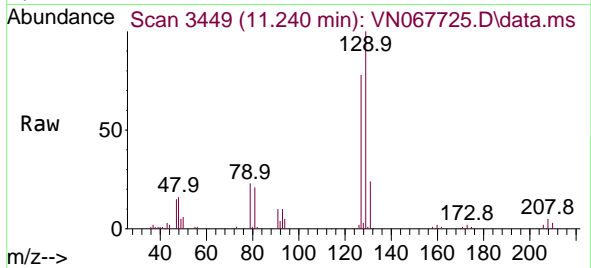




#53
 Dibromochloromethane
 Concen: 16.611 ug/l
 RT: 11.240 min Scan# 3449
 Delta R.T. -0.000 min
 Lab File: VN067725.D
 Acq: 13 Jul 2021 18:37

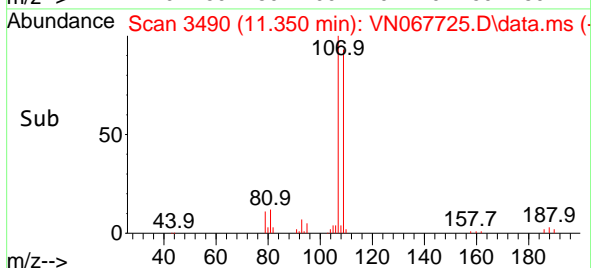
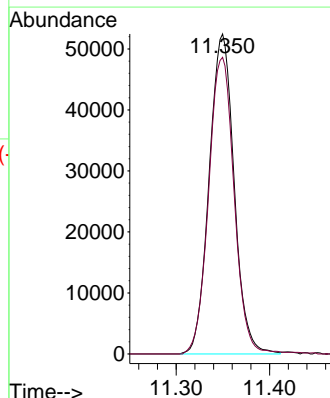
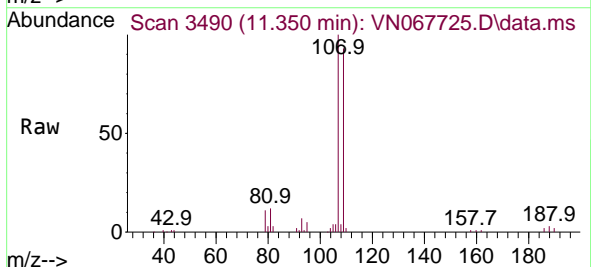
Instrument :
 MSVOA_N
 ClientSampled :

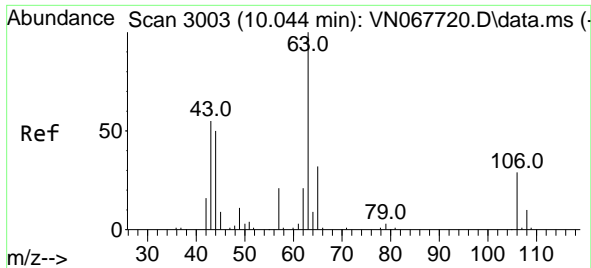
Tgt Ion:129 Resp: 95693
 Ion Ratio Lower Upper
 129 100
 127 78.1 39.6 118.8



#54
 1,2-Dibromoethane
 Concen: 17.151 ug/l
 RT: 11.350 min Scan# 3490
 Delta R.T. 0.003 min
 Lab File: VN067725.D
 Acq: 13 Jul 2021 18:37

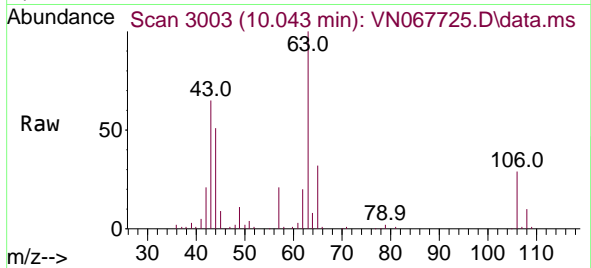
Tgt Ion:107 Resp: 97363
 Ion Ratio Lower Upper
 107 100
 109 94.3 74.6 111.8



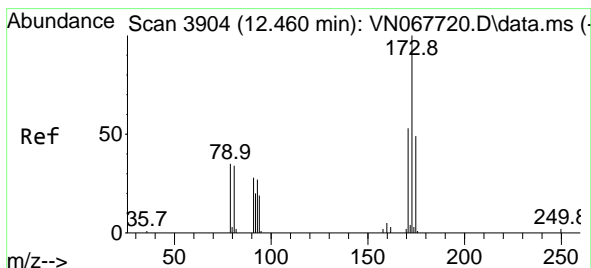
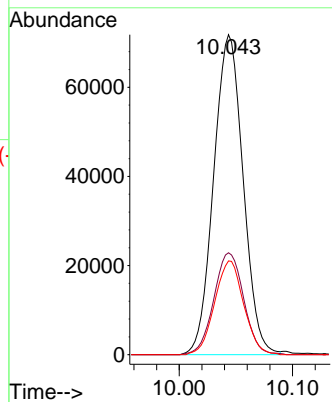
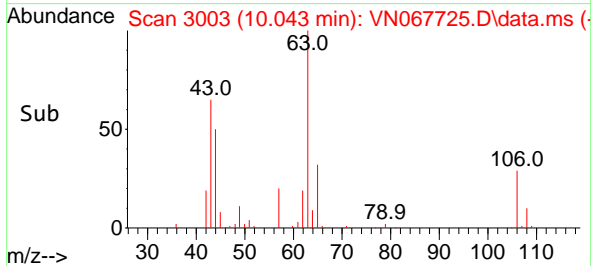


#55
 2-Chloroethyl vinyl ether
 Concen: 78.271 ug/l
 RT: 10.043 min Scan# 3003
 Delta R.T. -0.000 min
 Lab File: VN067725.D
 Acq: 13 Jul 2021 18:37

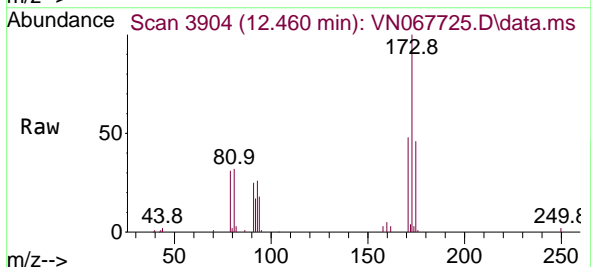
Instrument :
 MSVOA_N
 ClientSampled :



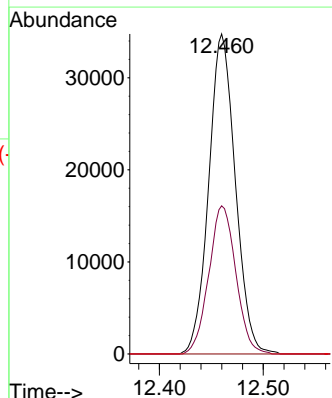
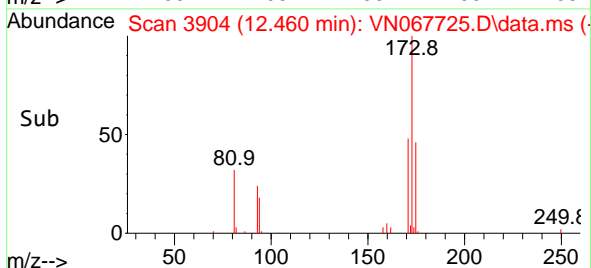
Tgt Ion	Resp	Lower	Upper
63	100		
65	32.3	25.5	38.3
106	28.9	22.1	33.1

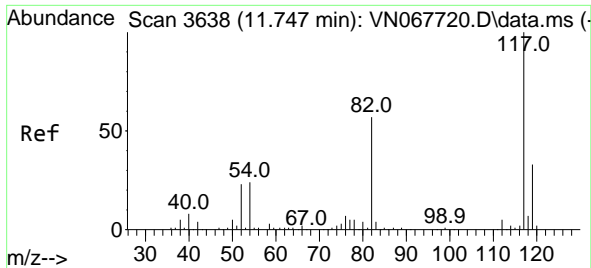


#56
 Bromoform
 Concen: 15.336 ug/l
 RT: 12.460 min Scan# 3904
 Delta R.T. -0.000 min
 Lab File: VN067725.D
 Acq: 13 Jul 2021 18:37



Tgt Ion	Resp	Lower	Upper
173	100		
175	47.1	38.5	57.7
254	0.0	0.0	0.0

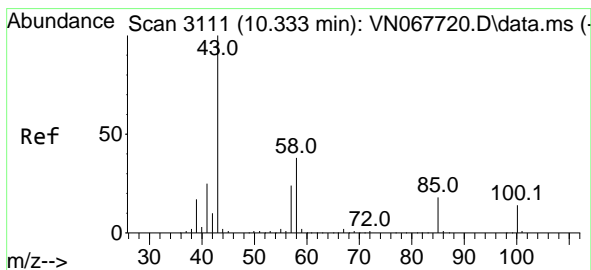
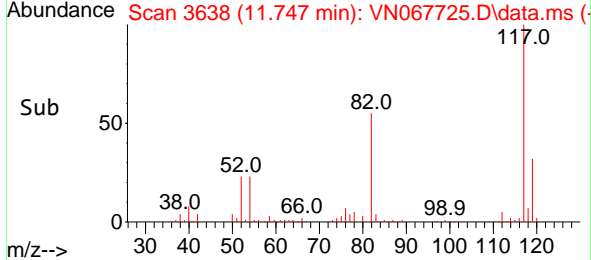
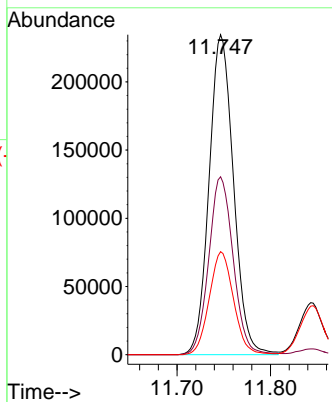
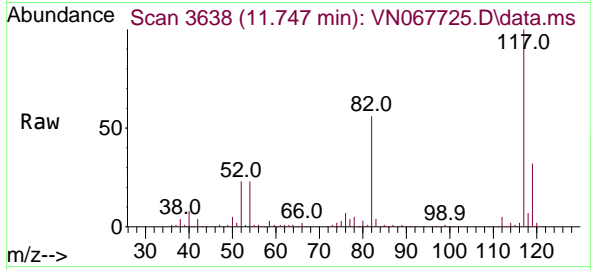




#57
 Chlorobenzene-d5
 Concen: 30.000 ug/l
 RT: 11.747 min Scan# 3638
 Delta R.T. -0.000 min
 Lab File: VN067725.D
 Acq: 13 Jul 2021 18:37

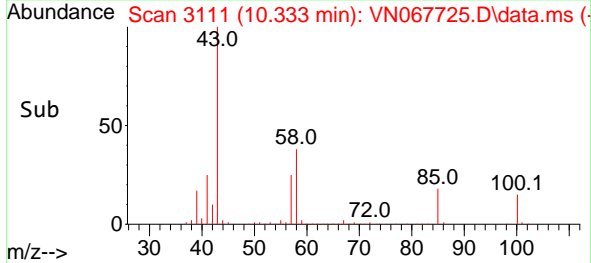
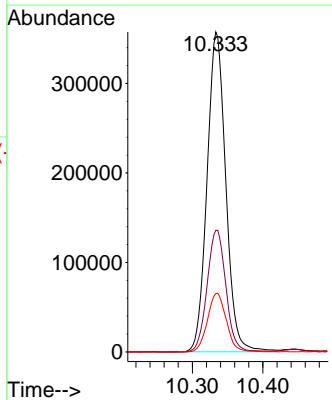
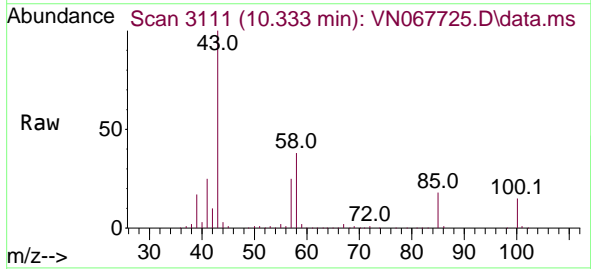
Instrument :
 MSVOA_N
 ClientSampled :

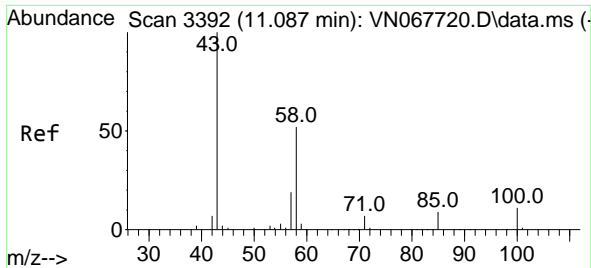
Tgt Ion	Resp	Lower	Upper
117	426302		
82	55.9	45.4	68.0
119	32.0	25.7	38.5



#58
 4-Methyl-2-Pentanone
 Concen: 90.175 ug/l
 RT: 10.333 min Scan# 3111
 Delta R.T. -0.000 min
 Lab File: VN067725.D
 Acq: 13 Jul 2021 18:37

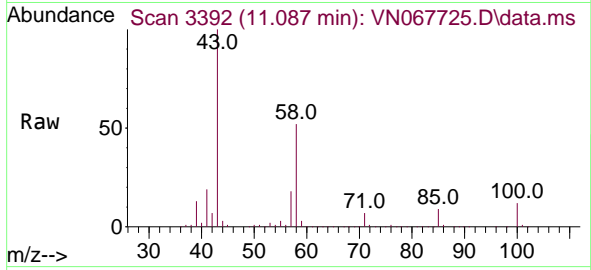
Tgt Ion	Resp	Lower	Upper
43	660086		
58	38.3	29.9	44.9
85	18.5	14.1	21.1





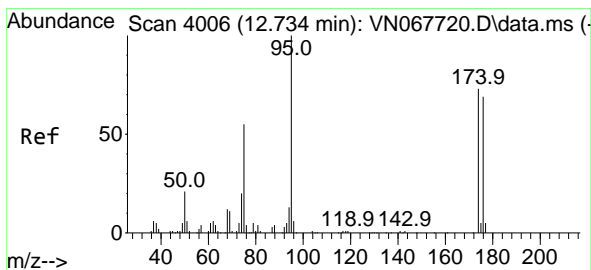
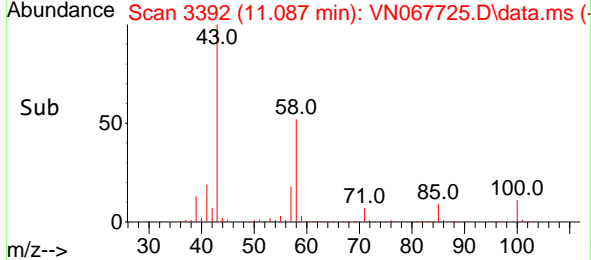
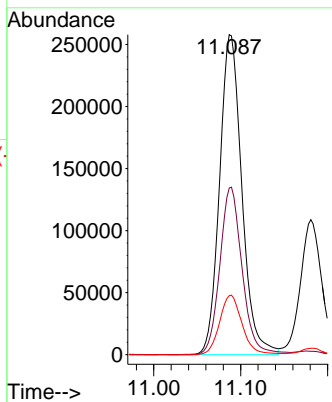
#59
 2-Hexanone
 Concen: 89.579 ug/l
 RT: 11.087 min Scan# 3392
 Delta R.T. -0.000 min
 Lab File: VN067725.D
 Acq: 13 Jul 2021 18:37

Instrument :
 MSVOA_N
 ClientSampled :

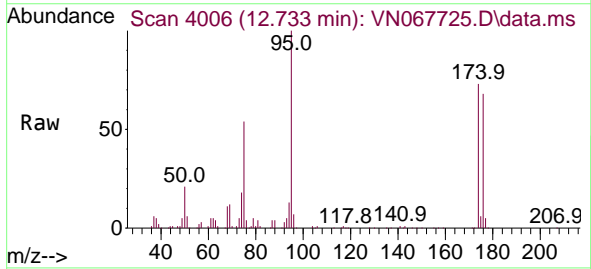


Tgt Ion: 43 Resp: 459754

Ion	Ratio	Lower	Upper
43	100		
58	52.3	41.5	62.3
57	18.8	15.1	22.7

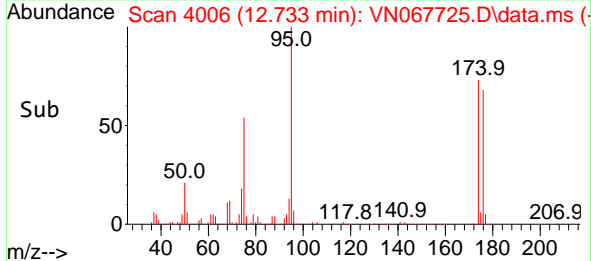
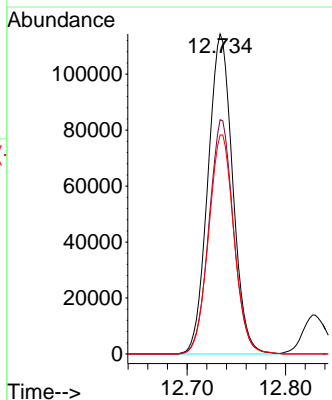


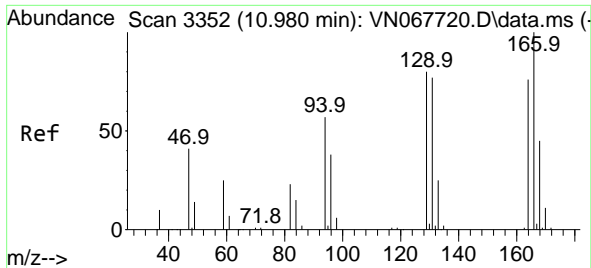
#60
 4-Bromofluorobenzene
 Concen: 28.883 ug/l
 RT: 12.733 min Scan# 4006
 Delta R.T. -0.000 min
 Lab File: VN067725.D
 Acq: 13 Jul 2021 18:37



Tgt Ion: 95 Resp: 199962

Ion	Ratio	Lower	Upper
95	100		
174	73.0	57.1	85.7
176	70.3	54.6	81.8



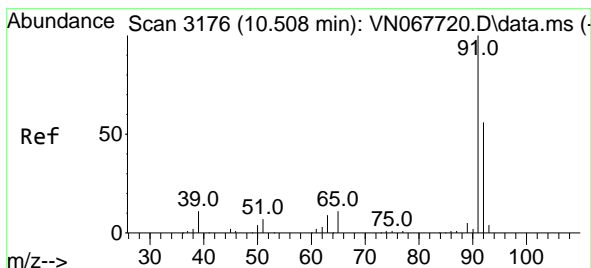
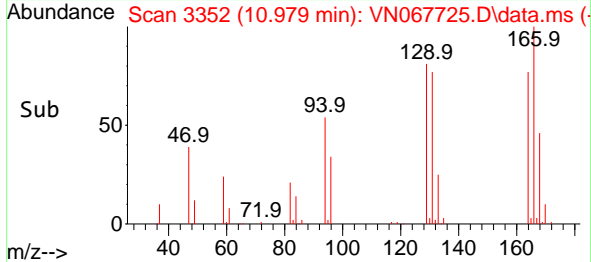
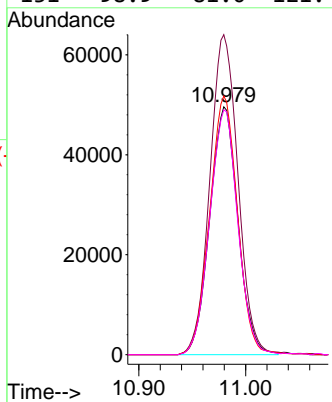
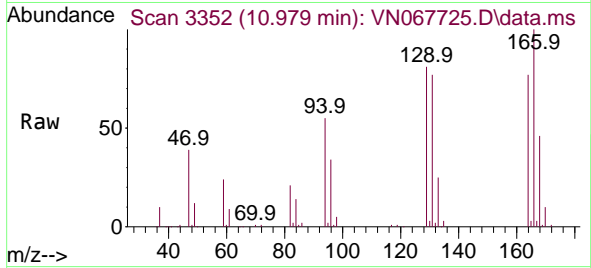


#61
 Tetrachloroethene
 Concen: 17.351 ug/l
 RT: 10.979 min Scan# 3352
 Delta R.T. -0.000 min
 Lab File: VN067725.D
 Acq: 13 Jul 2021 18:37

Instrument :
 MSVOA_N
 ClientSampled :

Tgt Ion:164 Resp: 90861

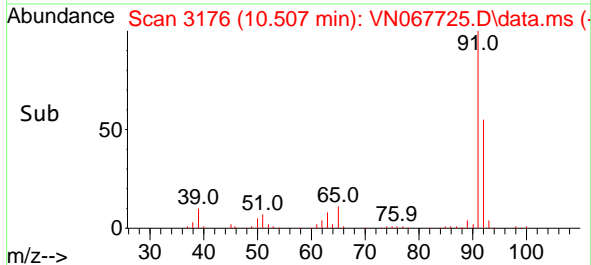
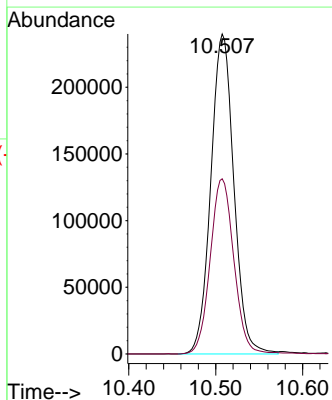
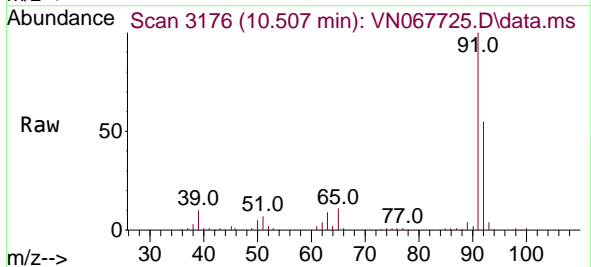
Ion	Ratio	Lower	Upper
164	100		
166	129.1	105.5	158.3
129	104.4	84.5	126.7
131	98.9	81.0	121.4

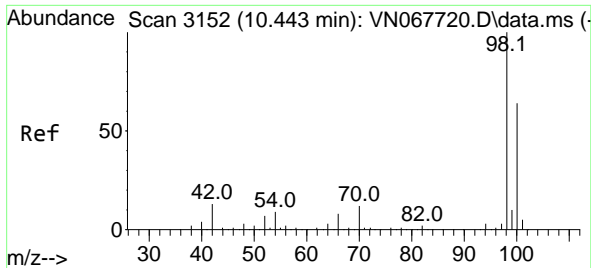


#62
 Toluene
 Concen: 17.628 ug/l
 RT: 10.507 min Scan# 3176
 Delta R.T. -0.000 min
 Lab File: VN067725.D
 Acq: 13 Jul 2021 18:37

Tgt Ion: 91 Resp: 442019

Ion	Ratio	Lower	Upper
91	100		
92	56.0	44.8	67.2

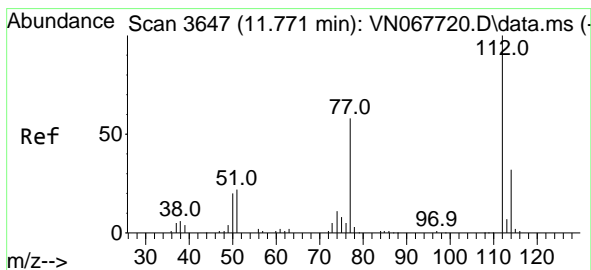
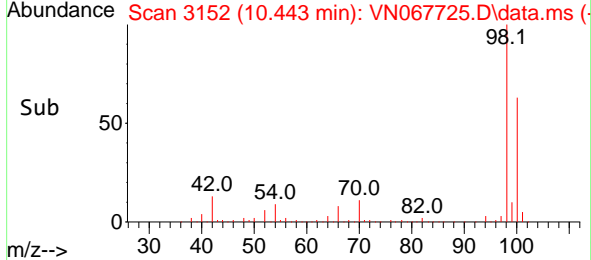
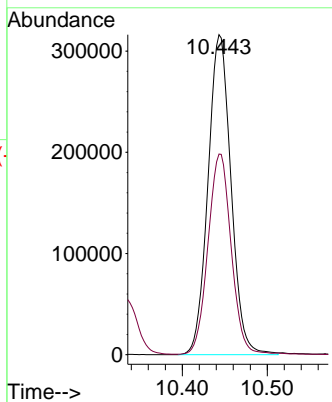
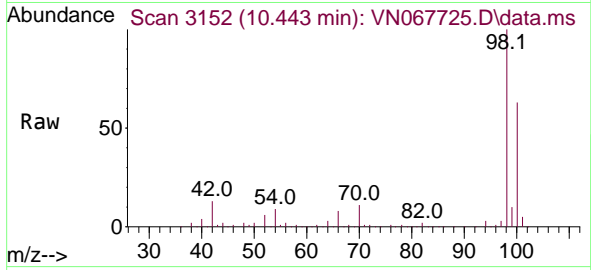




#63
 Toluene-d8
 Concen: 30.326 ug/l
 RT: 10.443 min Scan# 3152
 Delta R.T. -0.000 min
 Lab File: VN067725.D
 Acq: 13 Jul 2021 18:37

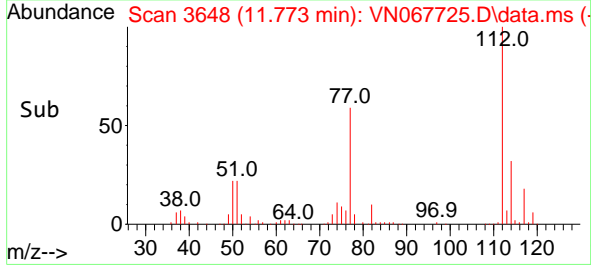
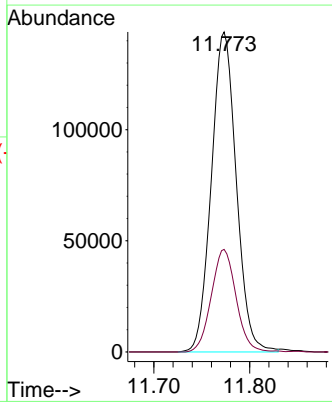
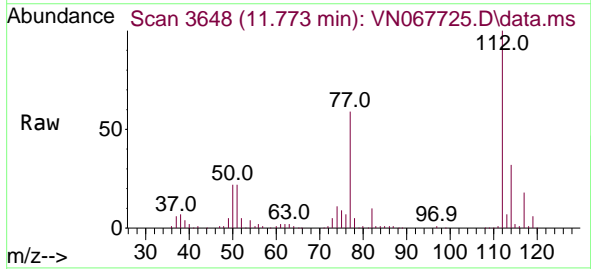
Instrument :
 MSVOA_N
 ClientSampled :

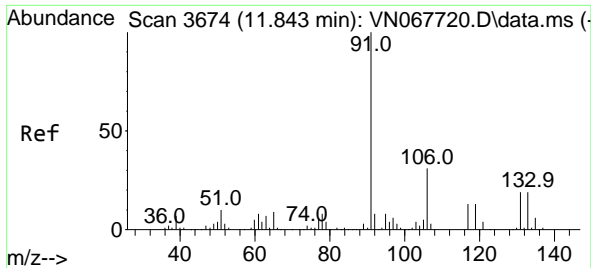
Tgt Ion: 98 Resp: 594615
 Ion Ratio Lower Upper
 98 100
 100 62.8 51.0 76.4



#64
 Chlorobenzene
 Concen: 17.284 ug/l
 RT: 11.773 min Scan# 3648
 Delta R.T. 0.003 min
 Lab File: VN067725.D
 Acq: 13 Jul 2021 18:37

Tgt Ion: 112 Resp: 259557
 Ion Ratio Lower Upper
 112 100
 114 32.0 25.2 37.8

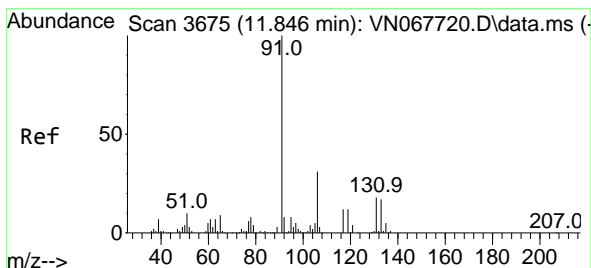
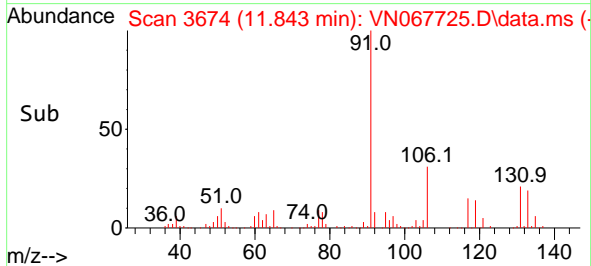
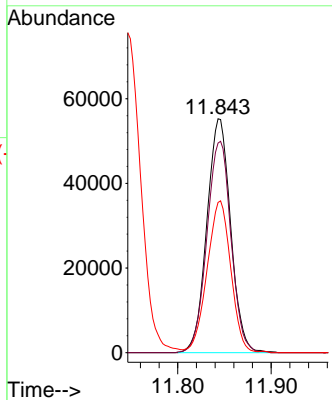
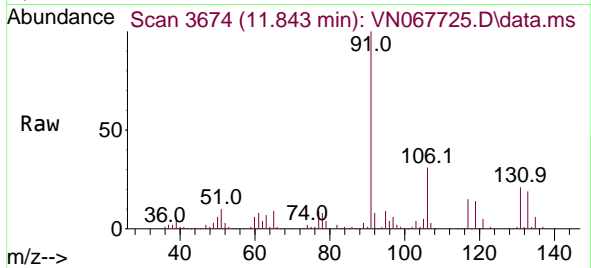




#65
 1,1,1,2-Tetrachloroethane
 Concen: 17.697 ug/l
 RT: 11.843 min Scan# 3674
 Delta R.T. -0.000 min
 Lab File: VN067725.D
 Acq: 13 Jul 2021 18:37

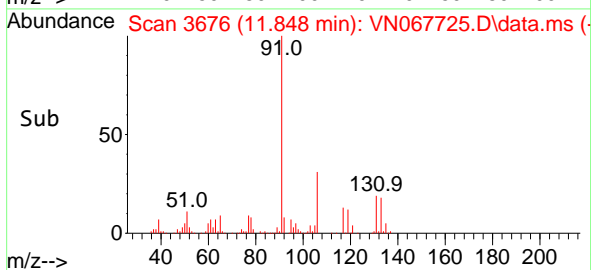
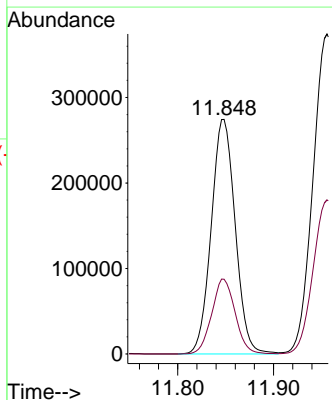
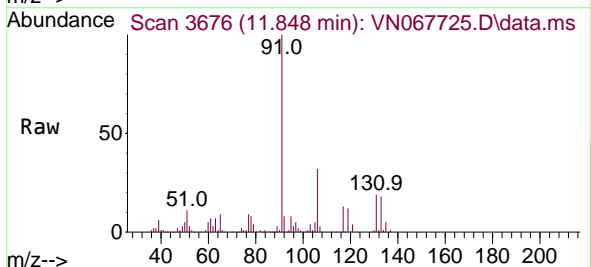
Instrument :
 MSVOA_N
 ClientSampled :

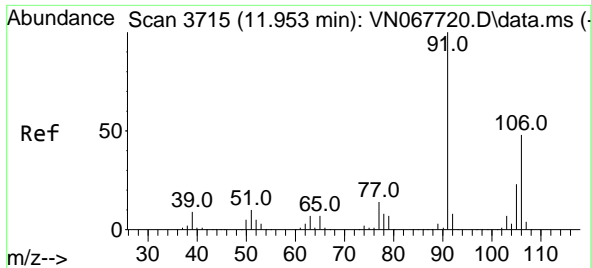
Tgt Ion	Resp	Lower	Upper
131	97912		
100	100		
133	91.7	0.0	192.6
119	64.6	0.0	133.8



#66
 Ethyl Benzene
 Concen: 17.176 ug/l
 RT: 11.848 min Scan# 3676
 Delta R.T. 0.003 min
 Lab File: VN067725.D
 Acq: 13 Jul 2021 18:37

Tgt Ion	Resp	Lower	Upper
91	476575		
100	100		
106	31.8	24.6	37.0

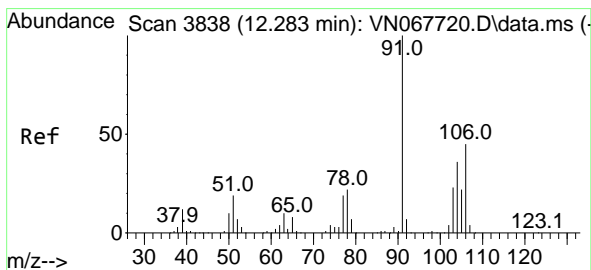
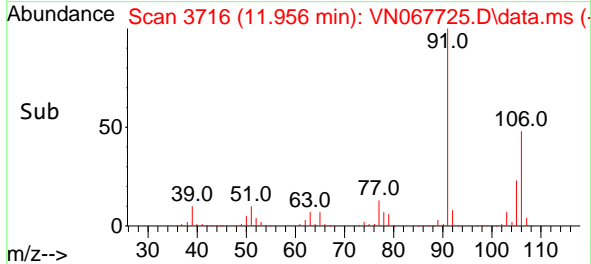
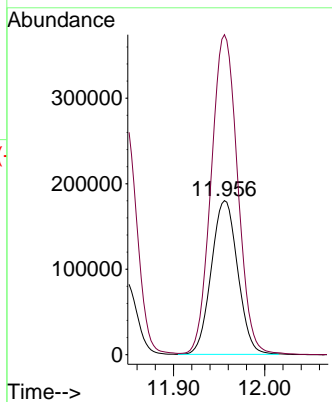
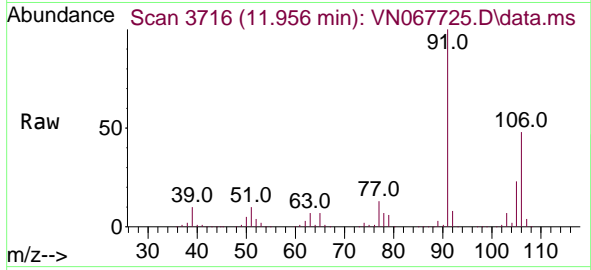




#67
 m/p-Xylenes
 Concen: 34.213 ug/l
 RT: 11.956 min Scan# 3716
 Delta R.T. 0.003 min
 Lab File: VN067725.D
 Acq: 13 Jul 2021 18:37

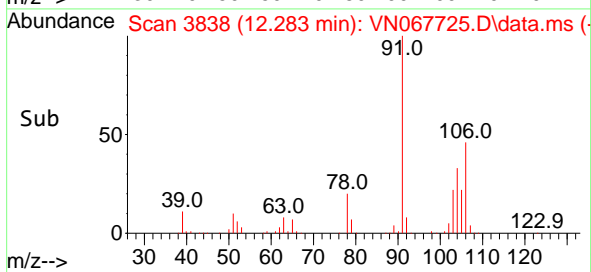
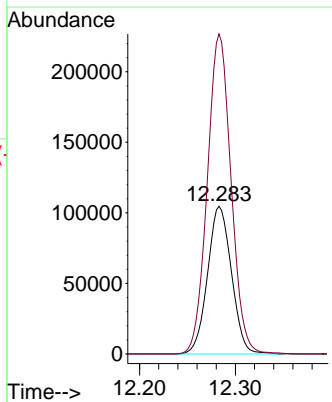
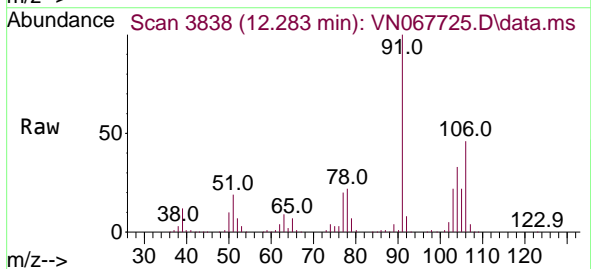
Instrument :
 MSVOA_N
 ClientSampled :

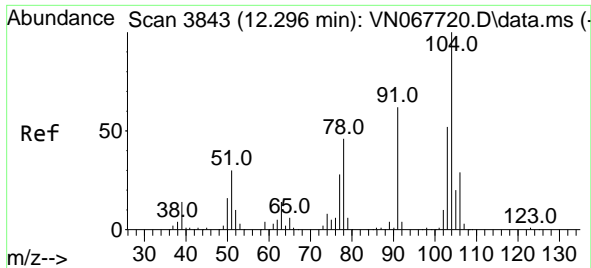
Tgt Ion:106 Resp: 362082
 Ion Ratio Lower Upper
 106 100
 91 209.0 166.6 250.0



#68
 o-Xylene
 Concen: 17.344 ug/l
 RT: 12.283 min Scan# 3838
 Delta R.T. -0.000 min
 Lab File: VN067725.D
 Acq: 13 Jul 2021 18:37

Tgt Ion:106 Resp: 181190
 Ion Ratio Lower Upper
 106 100
 91 215.7 109.6 328.8

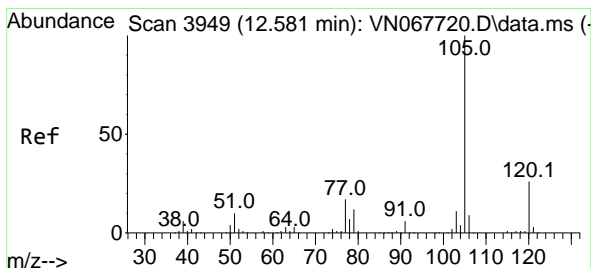
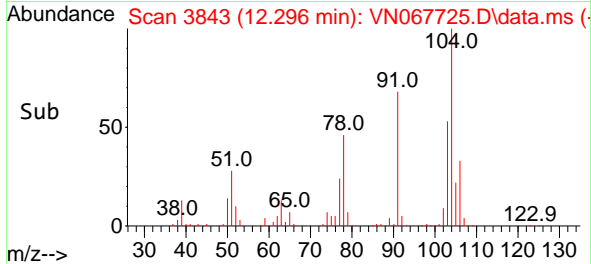
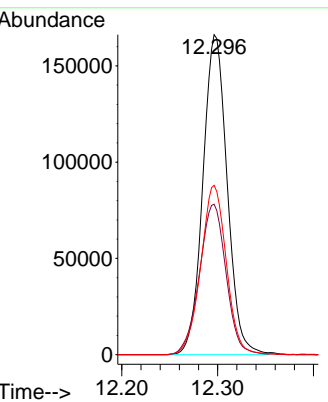
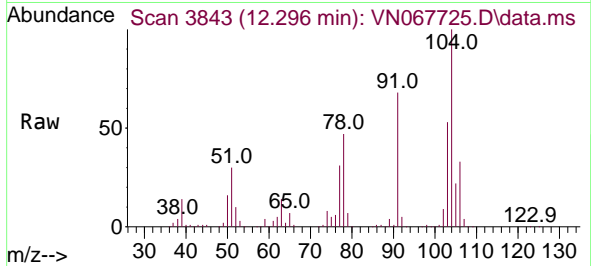




#69
 Styrene
 Concen: 16.921 ug/l
 RT: 12.296 min Scan# 3843
 Delta R.T. -0.000 min
 Lab File: VN067725.D
 Acq: 13 Jul 2021 18:37

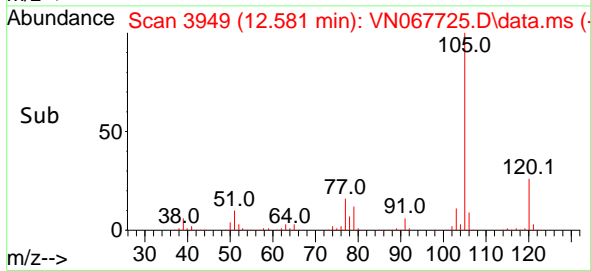
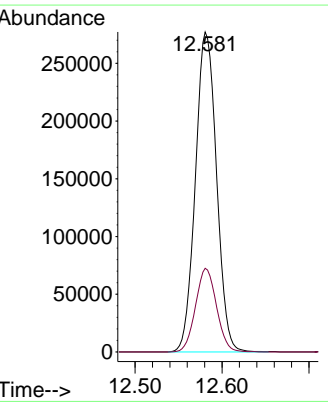
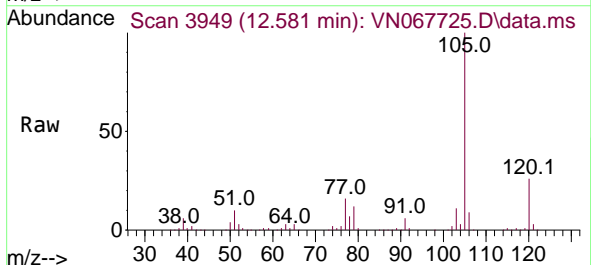
Instrument :
 MSVOA_N
 ClientSampled :

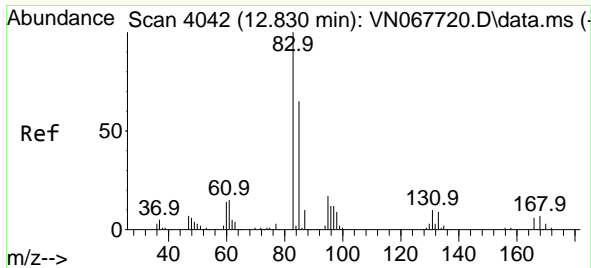
Tgt Ion	Resp	Lower	Upper
104	100		
78	51.5	40.8	61.2
103	55.9	44.9	67.3



#70
 Isopropylbenzene
 Concen: 17.364 ug/l
 RT: 12.581 min Scan# 3949
 Delta R.T. -0.000 min
 Lab File: VN067725.D
 Acq: 13 Jul 2021 18:37

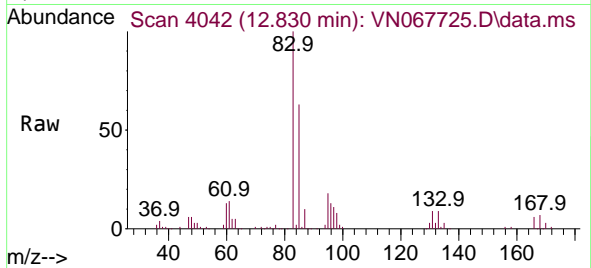
Tgt Ion	Resp	Lower	Upper
105	100		
120	25.9	17.9	33.3



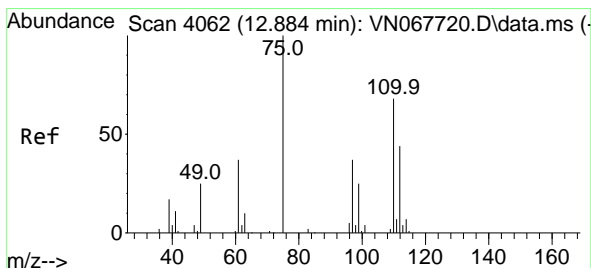
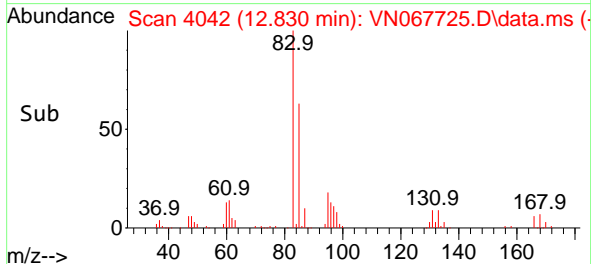
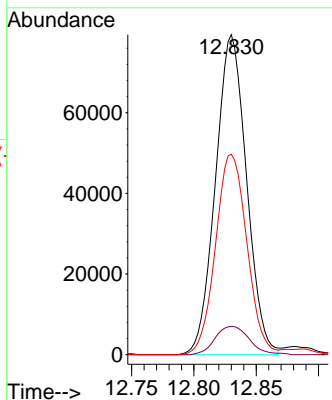


#71
 1,1,2,2-Tetrachloroethane
 Concen: 17.974 ug/l
 RT: 12.830 min Scan# 4042
 Delta R.T. -0.000 min
 Lab File: VN067725.D
 Acq: 13 Jul 2021 18:37

Instrument :
 MSVOA_N
 ClientSampled :

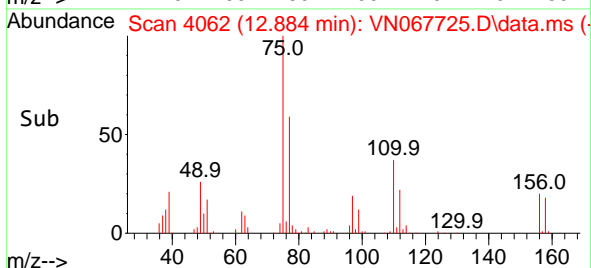
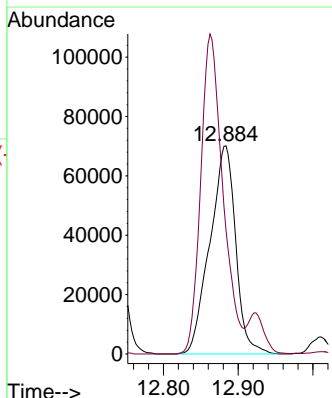
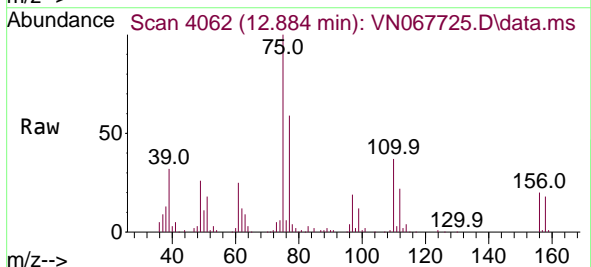


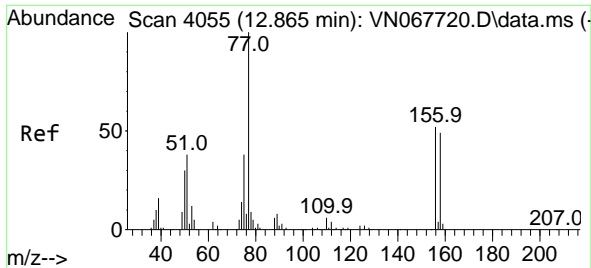
Tgt Ion: 83 Resp: 137581
 Ion Ratio Lower Upper
 83 100
 131 9.7 5.2 15.6
 85 63.3 32.0 96.0



#72
 1,2,3-Trichloropropane
 Concen: 26.421 ug/l
 RT: 12.884 min Scan# 4062
 Delta R.T. -0.000 min
 Lab File: VN067725.D
 Acq: 13 Jul 2021 18:37

Tgt Ion: 75 Resp: 168131
 Ion Ratio Lower Upper
 75 100
 77 132.7 0.0 365.2

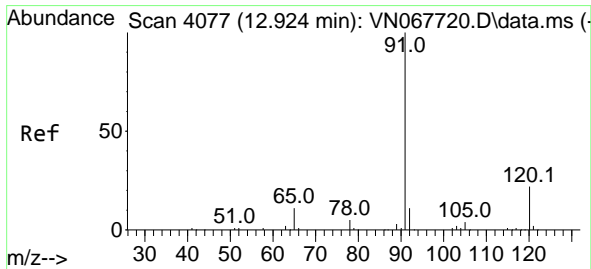
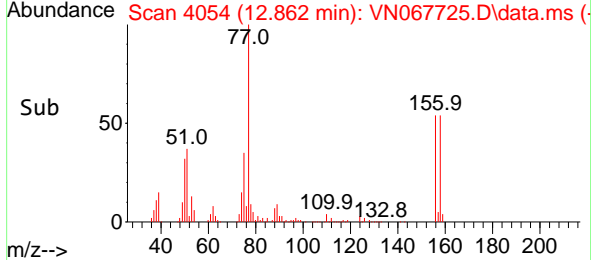
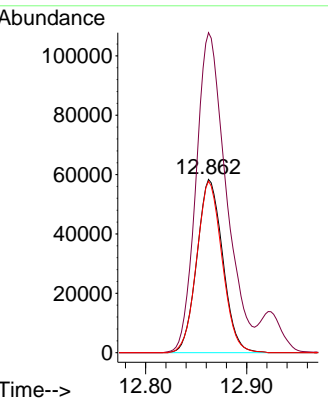
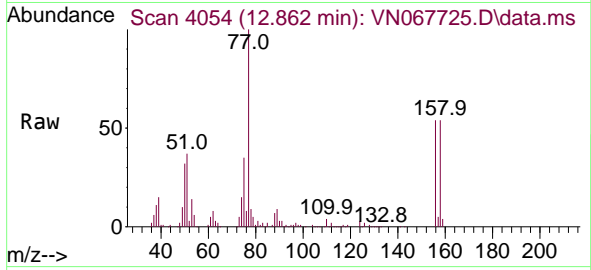




#73
 Bromobenzene
 Concen: 16.740 ug/l
 RT: 12.862 min Scan# 4054
 Delta R.T. -0.003 min
 Lab File: VN067725.D
 Acq: 13 Jul 2021 18:37

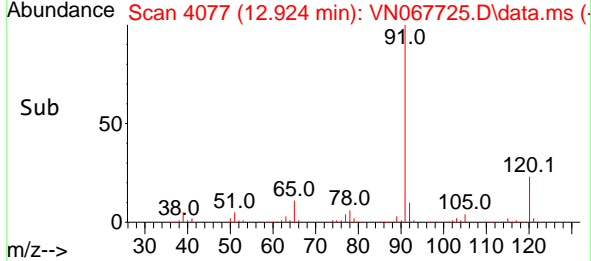
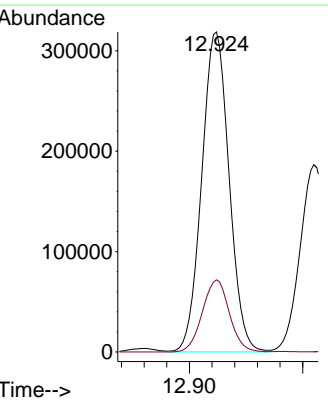
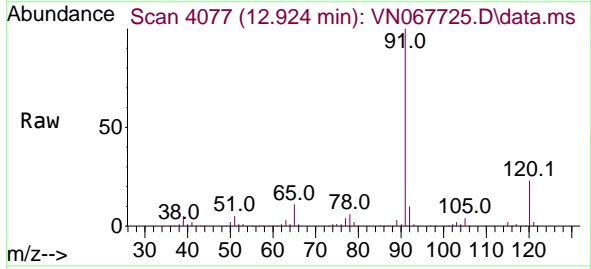
Instrument :
 MSVOA_N
 ClientSampled :

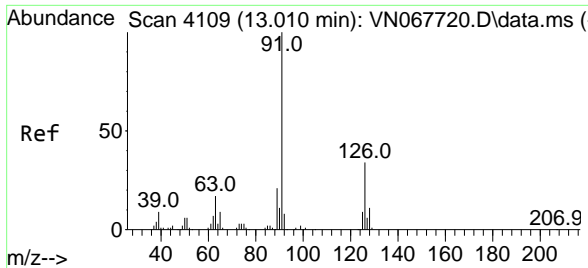
Tgt Ion:	156	Resp:	103728
Ion Ratio	Lower	Upper	
156	100		
77	215.1	0.0	436.4
158	97.5	0.0	191.4



#74
 n-propylbenzene
 Concen: 17.286 ug/l
 RT: 12.924 min Scan# 4077
 Delta R.T. -0.000 min
 Lab File: VN067725.D
 Acq: 13 Jul 2021 18:37

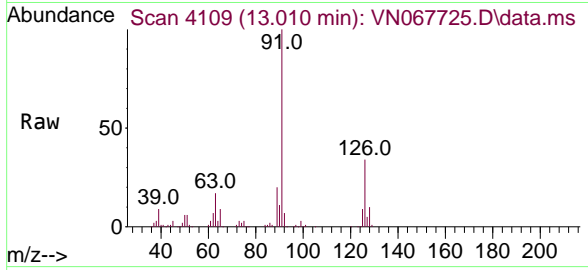
Tgt Ion:	91	Resp:	533987
Ion Ratio	Lower	Upper	
91	100		
120	22.2	0.0	44.2



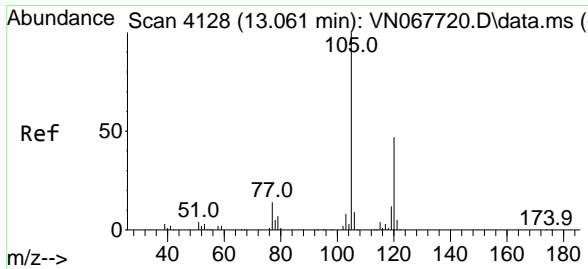
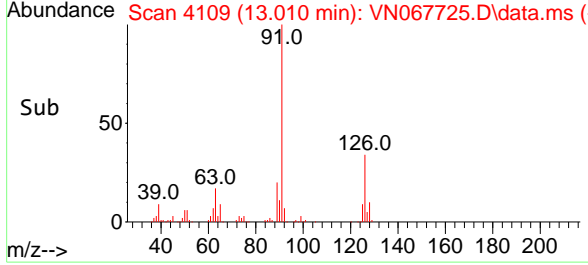
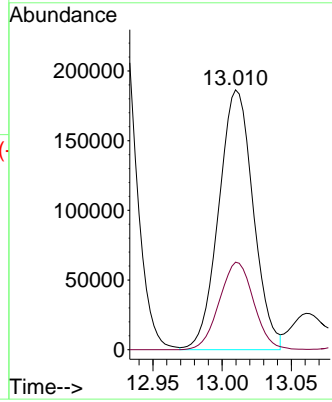


#75
 2-Chlorotoluene
 Concen: 17.476 ug/l
 RT: 13.010 min Scan# 4109
 Delta R.T. -0.000 min
 Lab File: VN067725.D
 Acq: 13 Jul 2021 18:37

Instrument :
 MSVOA_N
 ClientSampled :

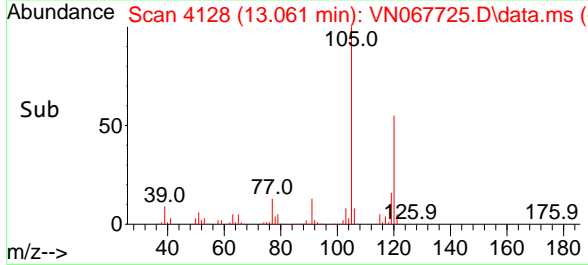
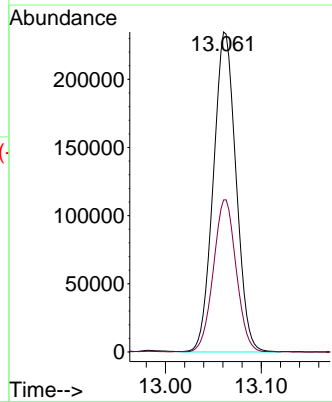
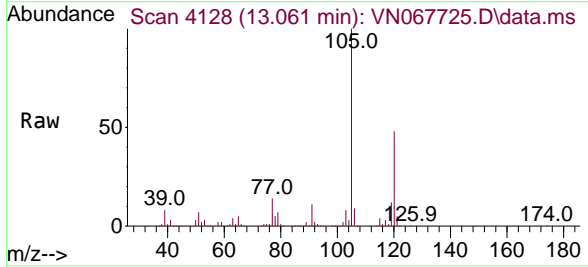


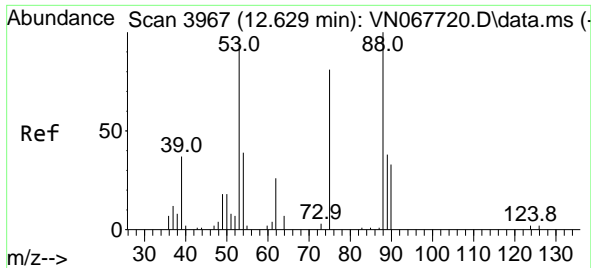
Tgt Ion: 91 Resp: 324034
 Ion Ratio Lower Upper
 91 100
 126 33.5 0.0 66.2



#76
 1,3,5-Trimethylbenzene
 Concen: 17.385 ug/l
 RT: 13.061 min Scan# 4128
 Delta R.T. -0.000 min
 Lab File: VN067725.D
 Acq: 13 Jul 2021 18:37

Tgt Ion: 105 Resp: 385884
 Ion Ratio Lower Upper
 105 100
 120 47.8 0.0 96.2

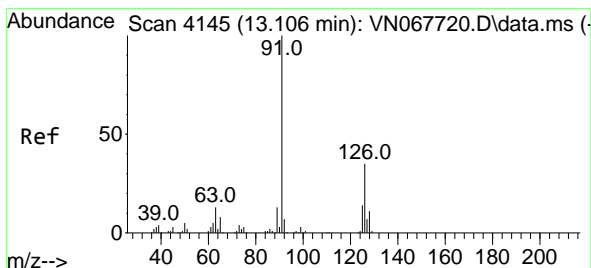
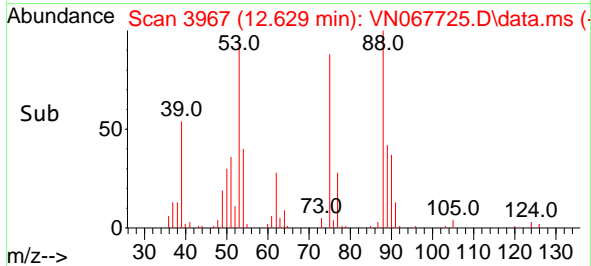
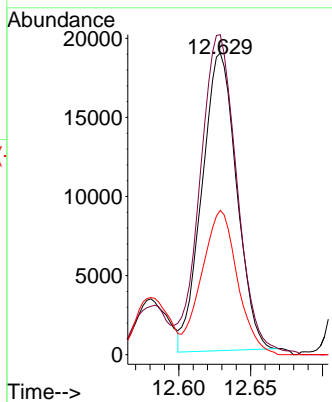
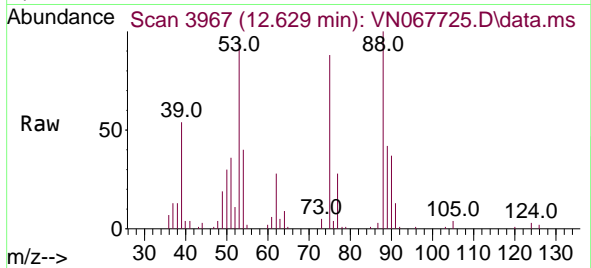




#77
 t-1,4-Dichloro-2-butene
 Concen: 14.671 ug/l
 RT: 12.629 min Scan# 3967
 Delta R.T. -0.000 min
 Lab File: VN067725.D
 Acq: 13 Jul 2021 18:37

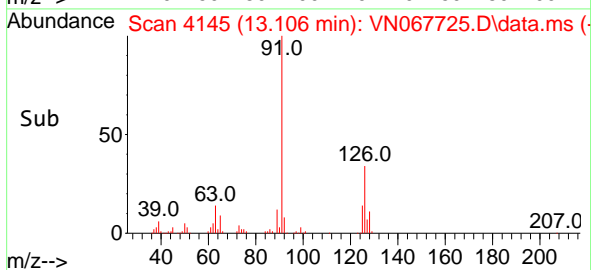
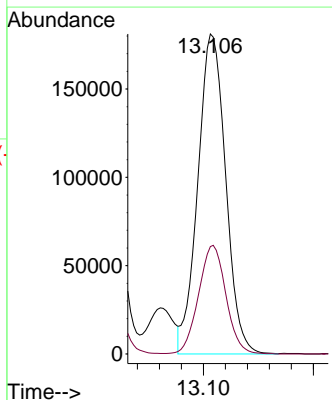
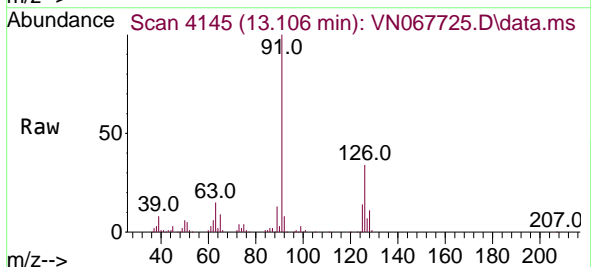
Instrument :
 MSVOA_N
 ClientSampled :

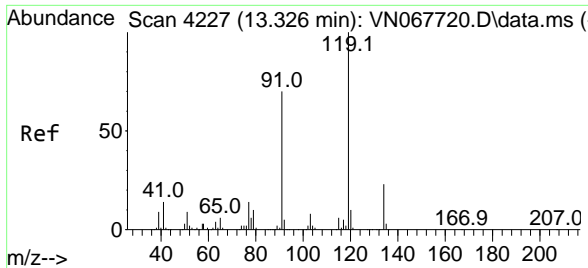
Tgt Ion	Resp	Lower	Upper
75	31507		
75	100		
53	106.1	57.0	171.0
89	48.8	24.7	74.1



#78
 4-Chlorotoluene
 Concen: 17.220 ug/l
 RT: 13.106 min Scan# 4145
 Delta R.T. -0.000 min
 Lab File: VN067725.D
 Acq: 13 Jul 2021 18:37

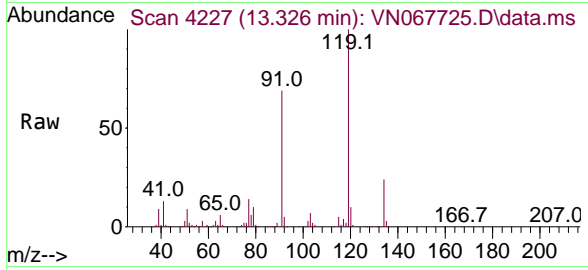
Tgt Ion	Resp	Lower	Upper
91	318337		
91	100		
126	33.5	0.0	66.4



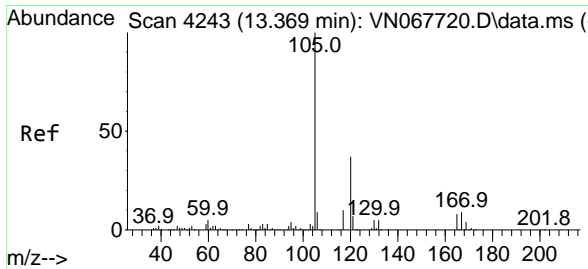
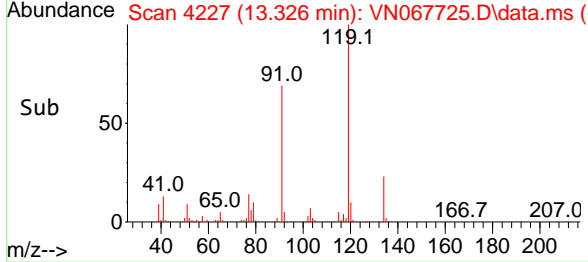
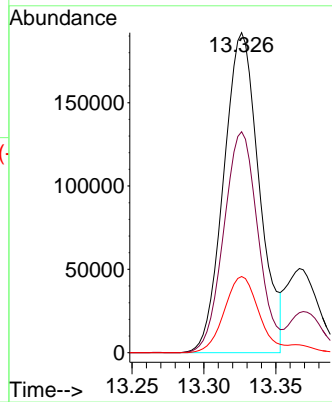


#79
 tert-butylbenzene
 Concen: 17.325 ug/l
 RT: 13.326 min Scan# 4227
 Delta R.T. -0.000 min
 Lab File: VN067725.D
 Acq: 13 Jul 2021 18:37

Instrument :
 MSVOA_N
 ClientSampled :

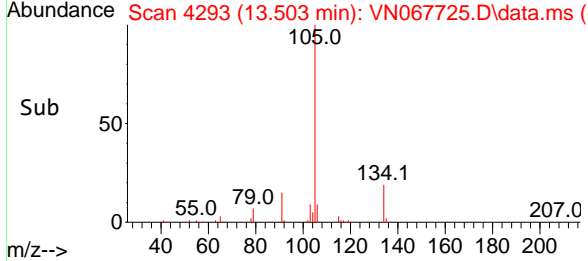
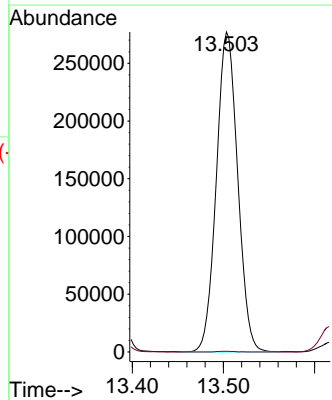
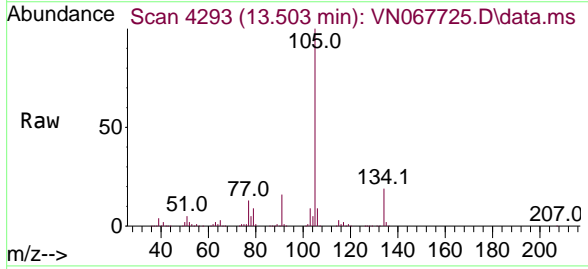


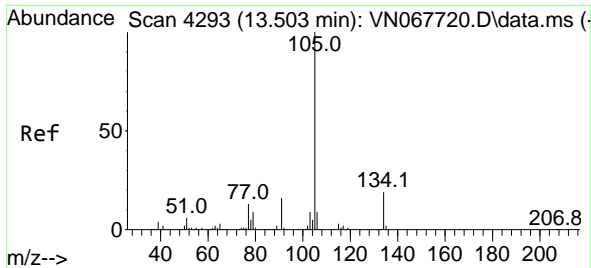
Tgt Ion:119 Resp: 330187
 Ion Ratio Lower Upper
 119 100
 91 66.7 0.0 137.2
 134 23.3 0.0 50.2



#80
 1,2,4-Trimethylbenzene
 Concen: 20.455 ug/l
 RT: 13.503 min Scan# 4293
 Delta R.T. 0.134 min
 Lab File: VN067725.D
 Acq: 13 Jul 2021 18:37

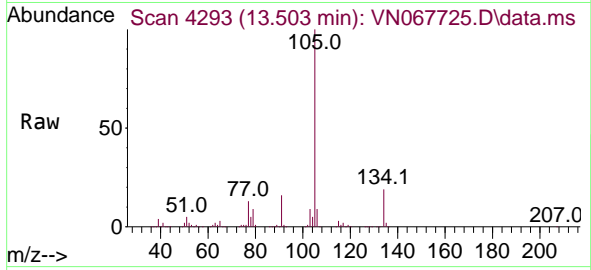
Tgt Ion:105 Resp: 450847
 Ion Ratio Lower Upper
 105 100
 120 0.1 0.0 0.2



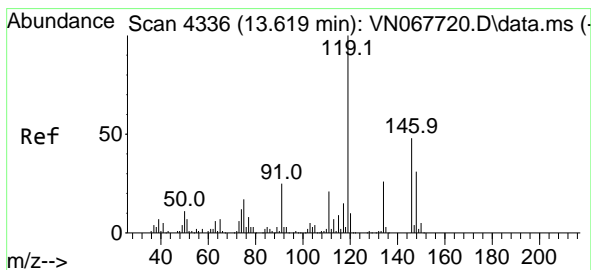
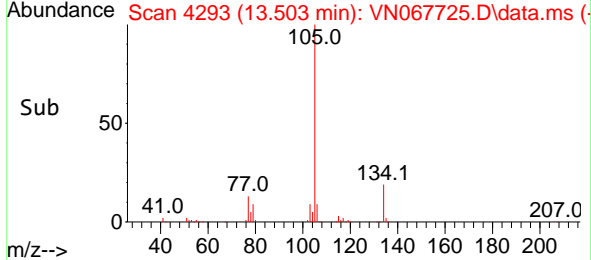
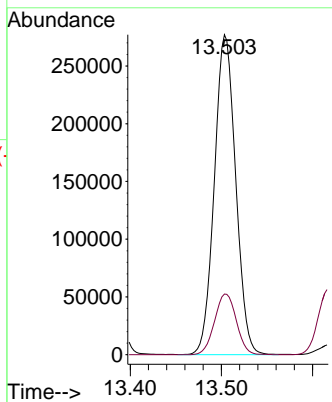


#81
 sec-Butylbenzene
 Concen: 17.053 ug/l
 RT: 13.503 min Scan# 4293
 Delta R.T. -0.000 min
 Lab File: VN067725.D
 Acq: 13 Jul 2021 18:37

Instrument :
 MSVOA_N
 ClientSampled :

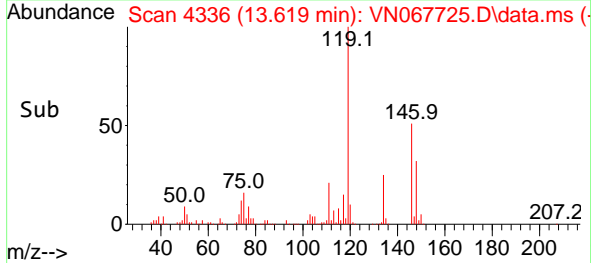
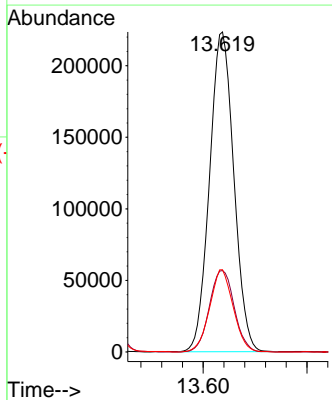
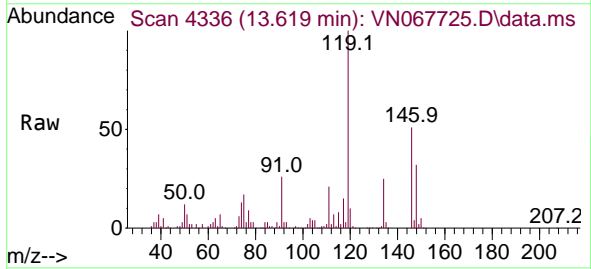


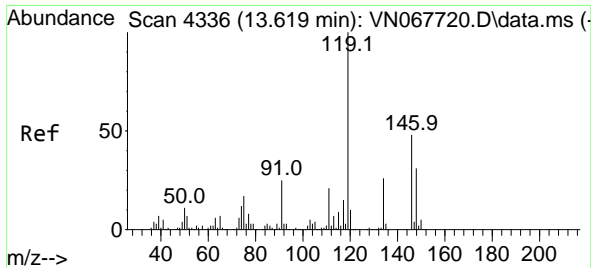
Tgt Ion:105 Resp: 450847
 Ion Ratio Lower Upper
 105 100
 134 19.4 0.0 38.4



#82
 p-Isopropyltoluene
 Concen: 16.482 ug/l
 RT: 13.619 min Scan# 4336
 Delta R.T. -0.000 min
 Lab File: VN067725.D
 Acq: 13 Jul 2021 18:37

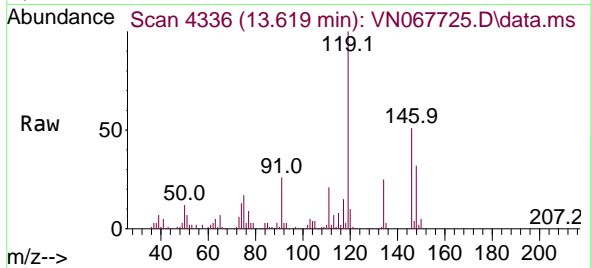
Tgt Ion:119 Resp: 362664
 Ion Ratio Lower Upper
 119 100
 134 26.1 0.0 51.0
 91 25.0 0.0 50.6



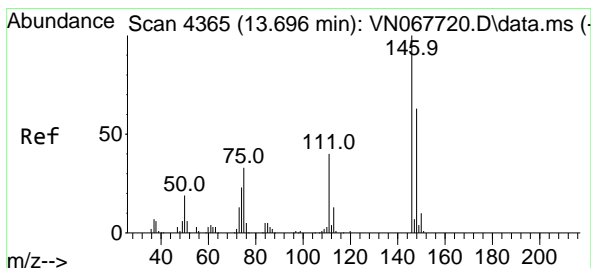
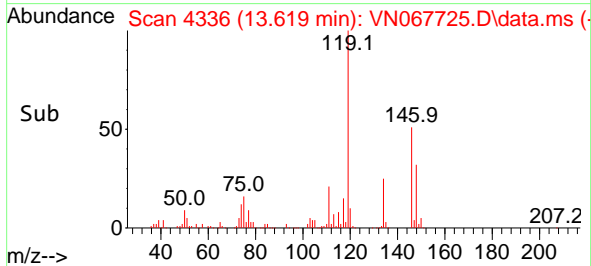
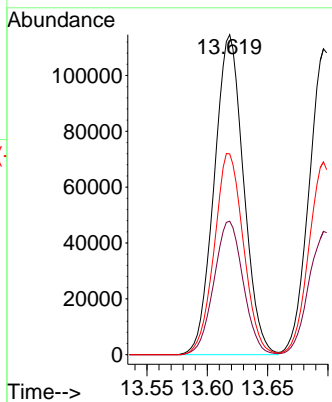


#83
 1,3-Dichlorobenzene
 Concen: 16.785 ug/l
 RT: 13.619 min Scan# 4336
 Delta R.T. -0.000 min
 Lab File: VN067725.D
 Acq: 13 Jul 2021 18:37

Instrument :
 MSVOA_N
 ClientSampled :

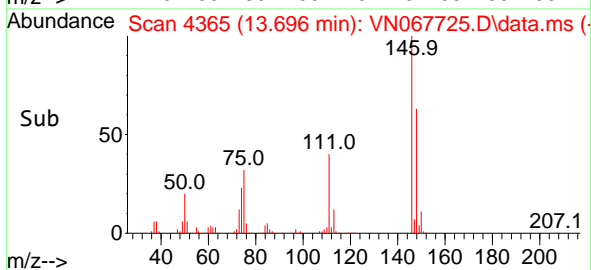
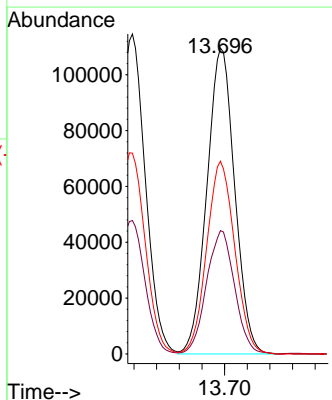
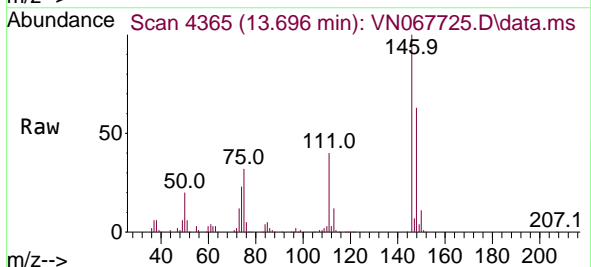


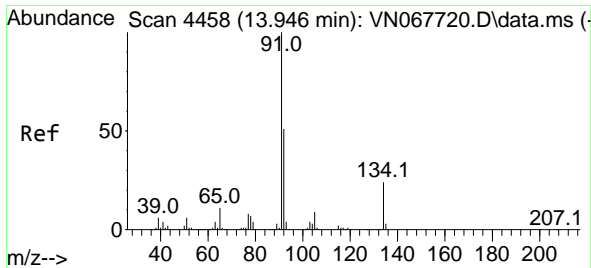
Tgt Ion:146 Resp: 194234
 Ion Ratio Lower Upper
 146 100
 111 41.6 21.1 63.1
 148 62.5 31.9 95.7



#84
 1,4-Dichlorobenzene
 Concen: 16.576 ug/l
 RT: 13.696 min Scan# 4365
 Delta R.T. -0.000 min
 Lab File: VN067725.D
 Acq: 13 Jul 2021 18:37

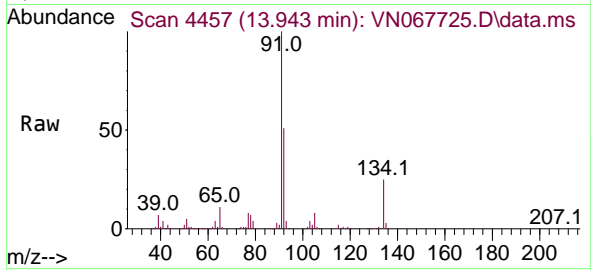
Tgt Ion:146 Resp: 186845
 Ion Ratio Lower Upper
 146 100
 111 40.7 20.0 59.9
 148 63.7 31.8 95.3





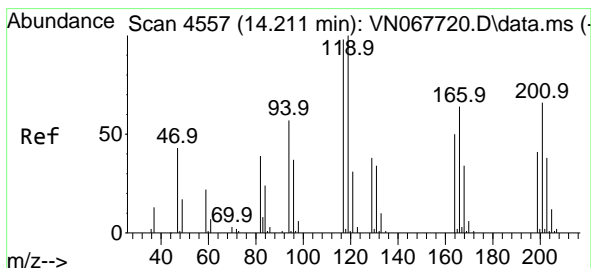
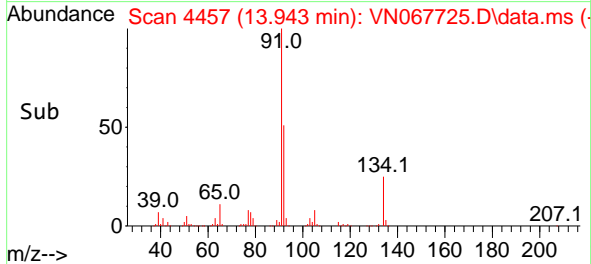
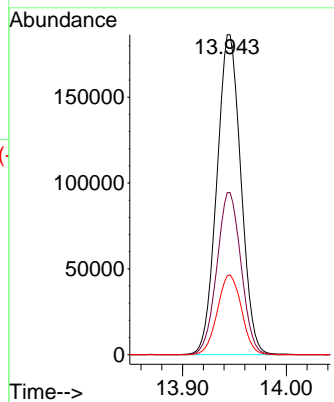
#85
 n-Butylbenzene
 Concen: 16.436 ug/l
 RT: 13.943 min Scan# 4457
 Delta R.T. -0.003 min
 Lab File: VN067725.D
 Acq: 13 Jul 2021 18:37

Instrument :
 MSVOA_N
 ClientSampled :



Tgt Ion: 91 Resp: 300049

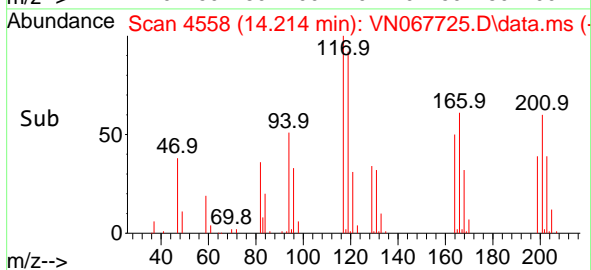
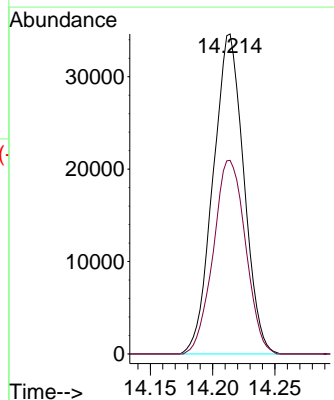
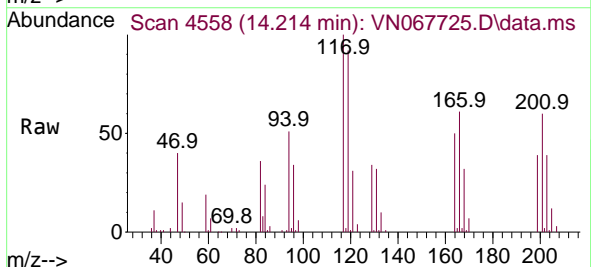
Ion	Ratio	Lower	Upper
91	100		
92	51.0	0.0	102.6
134	25.1	0.0	48.6

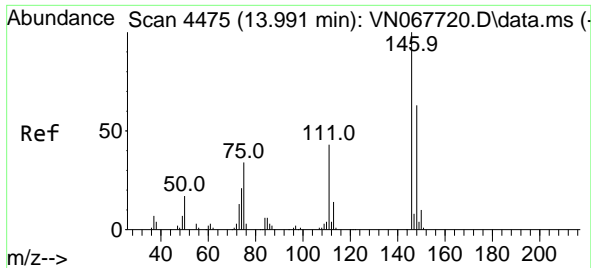


#86
 Hexachloroethane
 Concen: 16.214 ug/l
 RT: 14.214 min Scan# 4558
 Delta R.T. 0.003 min
 Lab File: VN067725.D
 Acq: 13 Jul 2021 18:37

Tgt Ion: 117 Resp: 59353

Ion	Ratio	Lower	Upper
117	100		
201	63.4	31.8	95.3

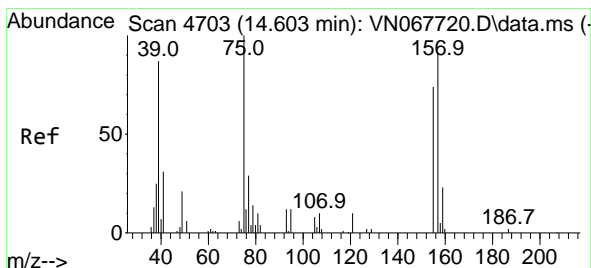
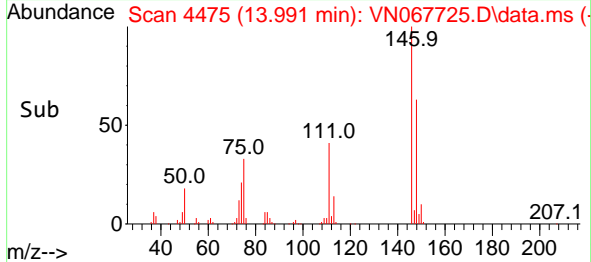
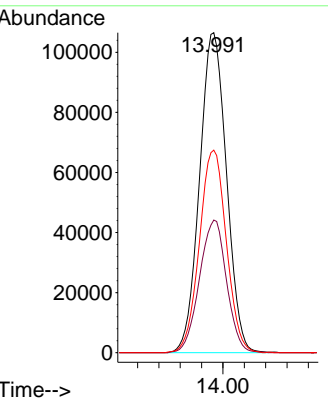
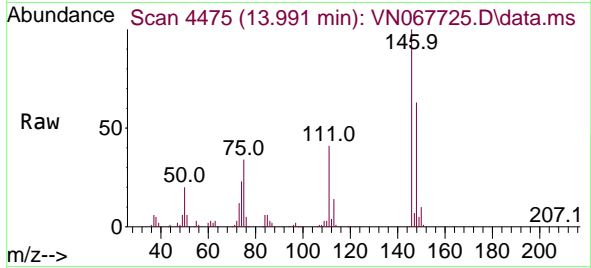




#87
 1,2-Dichlorobenzene
 Concen: 16.853 ug/l
 RT: 13.991 min Scan# 4475
 Delta R.T. -0.000 min
 Lab File: VN067725.D
 Acq: 13 Jul 2021 18:37

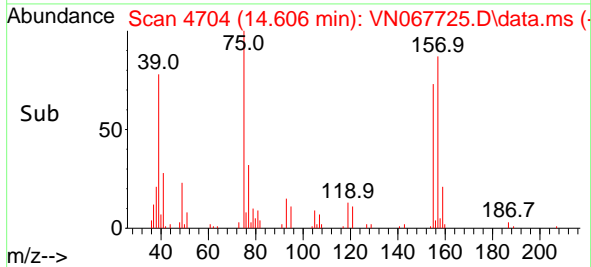
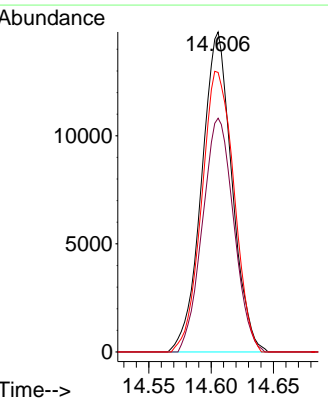
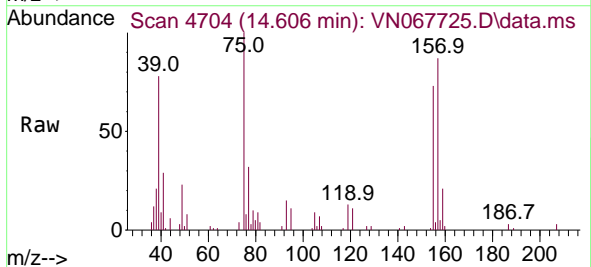
Instrument :
 MSVOA_N
 ClientSampled :

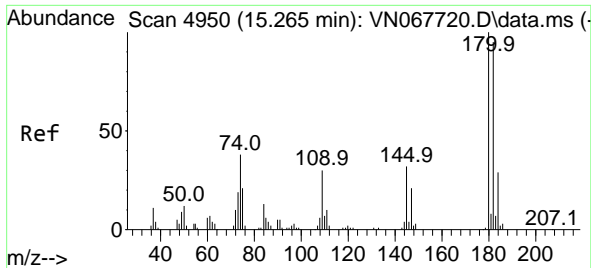
Tgt Ion	Resp	Lower	Upper
146	186199		
146	100		
111	41.8	22.0	66.0
148	63.5	31.7	95.1



#88
 1,2-Dibromo-3-Chloropropane
 Concen: 18.308 ug/l
 RT: 14.606 min Scan# 4704
 Delta R.T. 0.003 min
 Lab File: VN067725.D
 Acq: 13 Jul 2021 18:37

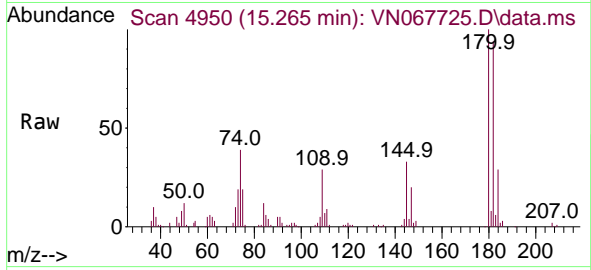
Tgt Ion	Resp	Lower	Upper
75	25072		
75	100		
155	75.1	59.2	88.8
157	93.2	75.4	113.2



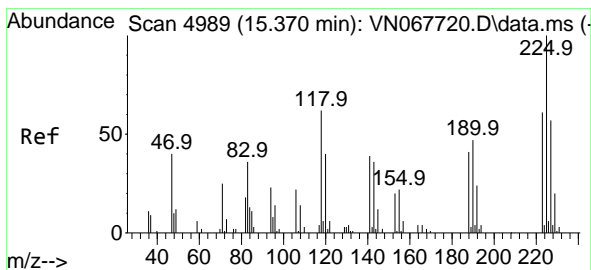
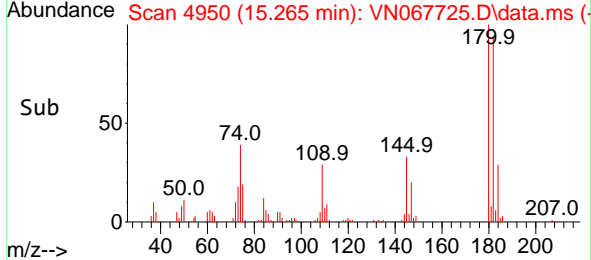
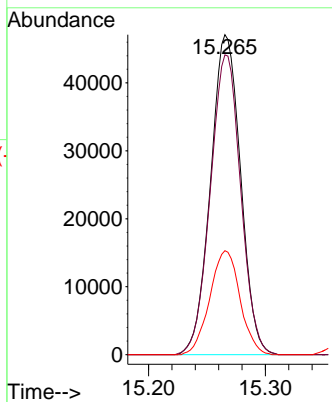


#89
 1,2,4-Trichlorobenzene
 Concen: 16.697 ug/l
 RT: 15.265 min Scan# 4950
 Delta R.T. -0.000 min
 Lab File: VN067725.D
 Acq: 13 Jul 2021 18:37

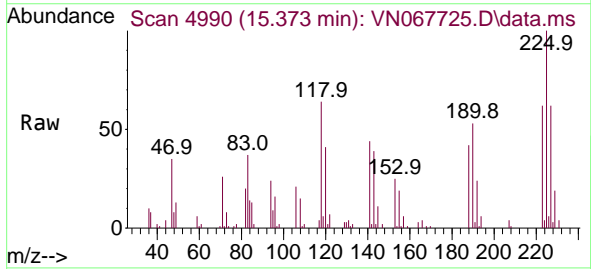
Instrument :
 MSVOA_N
 ClientSampled :



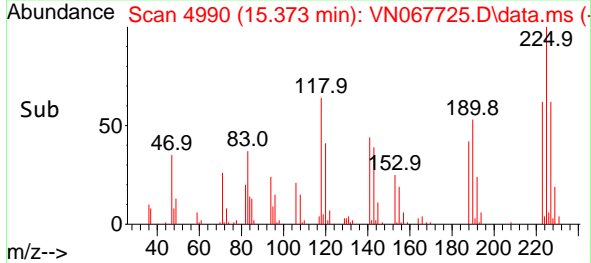
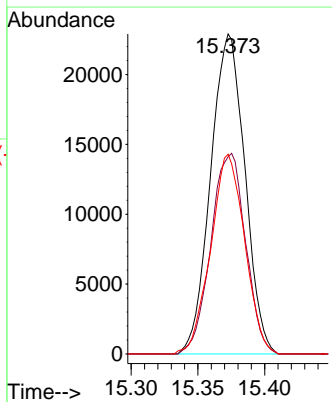
Tgt Ion:180 Resp: 84107
 Ion Ratio Lower Upper
 180 100
 182 94.6 74.5 111.7
 145 32.7 25.4 38.0

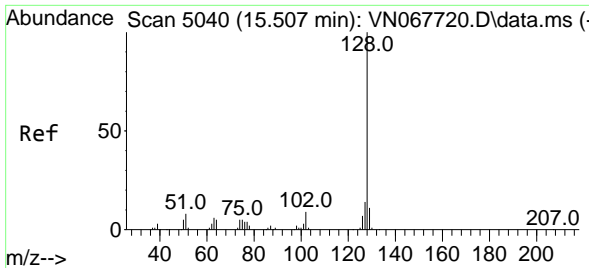


#90
 Hexachlorobutadiene
 Concen: 16.890 ug/l
 RT: 15.373 min Scan# 4990
 Delta R.T. 0.003 min
 Lab File: VN067725.D
 Acq: 13 Jul 2021 18:37



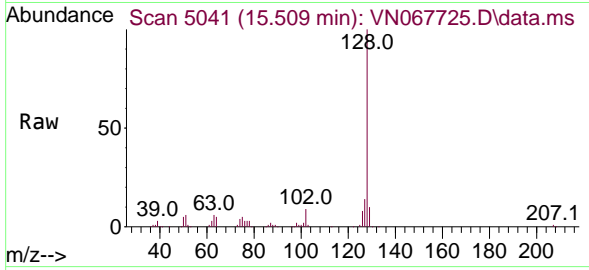
Tgt Ion:225 Resp: 40894
 Ion Ratio Lower Upper
 225 100
 223 63.5 0.0 124.6
 227 62.0 0.0 115.6





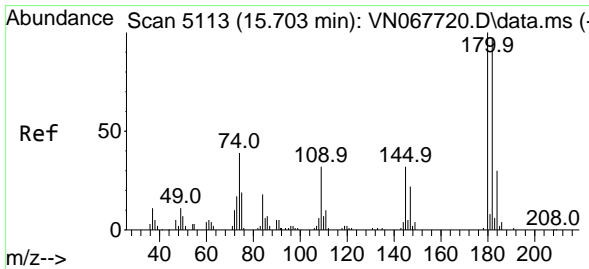
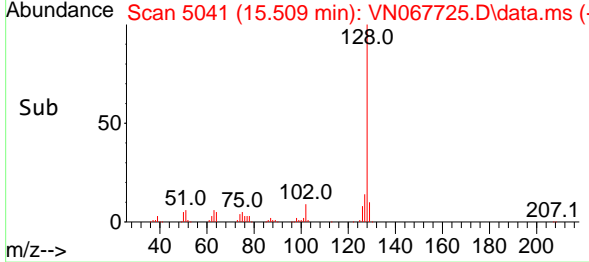
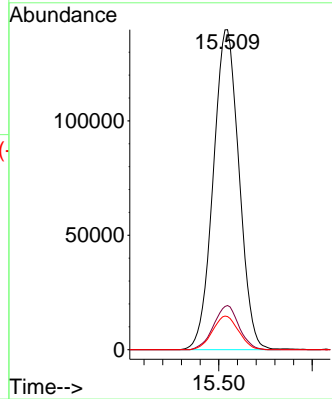
#91
 Naphthalene
 Concen: 18.731 ug/l
 RT: 15.509 min Scan# 5041
 Delta R.T. 0.003 min
 Lab File: VN067725.D
 Acq: 13 Jul 2021 18:37

Instrument :
 MSVOA_N
 ClientSampled :



Tgt Ion:128 Resp: 268055

Ion	Ratio	Lower	Upper
128	100		
127	13.6	10.9	16.3
129	10.6	8.7	13.1



#92
 1,2,3-Trichlorobenzene
 Concen: 17.023 ug/l
 RT: 15.702 min Scan# 5113
 Delta R.T. -0.000 min
 Lab File: VN067725.D
 Acq: 13 Jul 2021 18:37

Tgt Ion:180 Resp: 82155

Ion	Ratio	Lower	Upper
180	100		
182	93.9	0.0	190.8
145	35.0	0.0	68.2

