

Data Path : Z:\VOASRV\HPCHEM1\MSVOA N\DATA\VN071519\  
 Data File : VN056705.D  
 Acq On : 15 Jul 2019 12:33  
 Operator : JC/SP  
 Sample : K3591-07  
 Misc : 5.00mL/MSVOA N/WATER  
 ALS Vial : 11 Sample Multiplier: 1

**Instrument :**  
 MSVOA\_N  
**ClientSampled :**  
 LOD-MDL-WATER-01-QT3-2019

Quant Time: Jul 16 04:21:06 2019  
 Quant Method : Z:\VOASRV\HPCHEM1\MSVOA\_N\METHODS\82N071519W.M  
 Quant Title : SW846 8260  
 QLast Update : Tue Jul 16 01:25:25 2019  
 Response via : Initial Calibration

Internal Standards	R.T.	QIon	Response	Conc	Units	Dev(Min)
1) Pentafluorobenzene	7.67	168	340925	50.00	ug/l	0.00
34) 1,4-Difluorobenzene	8.59	114	533995	50.00	ug/l	0.00
63) Chlorobenzene-d5	11.41	117	451102	50.00	ug/l	0.00
72) 1,4-Dichlorobenzene-d4	13.34	152	143833	50.00	ug/l	0.00

System Monitoring Compounds

33) 1,2-Dichloroethane-d4	8.03	65	194849	51.67	ug/l	0.00
Spiked Amount	50.000		Recovery	=	103.34%	
35) Dibromofluoromethane	7.59	113	164471	49.49	ug/l	0.00
Spiked Amount	50.000		Recovery	=	98.98%	
50) Toluene-d8	10.09	98	626033	48.78	ug/l	0.00
Spiked Amount	50.000		Recovery	=	97.56%	
62) 4-Bromofluorobenzene	12.40	95	178669	41.28	ug/l	0.00
Spiked Amount	50.000		Recovery	=	82.56%	

Target Compounds

						Qvalue
3) Chloromethane	2.06	50	1150	0.267	ug/l	96
5) Bromomethane	2.56	94	1105	0.453	ug/l #	77
7) Trichlorofluoromethane	3.02	101	1170	0.220	ug/l #	67
11) Tert butyl alcohol	4.80	59	275	0.438	ug/l #	73
13) Acrolein	3.62	56	396	12.438	ug/l #	45
15) Acrylonitrile	5.00	53	427	0.236	ug/l #	33
16) Acetone	3.82	43	2009	1.156	ug/l #	80
17) Carbon Disulfide	4.05	76	2722	0.321	ug/l #	75
18) Methyl Acetate	4.34	43	3242	Below Cal	#	61
20) Methylene Chloride	4.56	84	1062	0.280	ug/l #	58
23) Vinyl Acetate	5.91	43	6457	0.728	ug/l #	90
25) 2-Butanone	6.85	43	1981	0.780	ug/l #	48
29) Tetrahydrofuran	7.23	42	1431	0.864	ug/l #	81
30) Chloroform	7.37	83	1667	0.263	ug/l	89
31) Cyclohexane	7.66	56	6625	1.099	ug/l #	1
36) 1,1-Dichloropropene	7.79	75	1203	0.243	ug/l #	61
38) Carbon Tetrachloride	7.67	117	29192	6.299	ug/l #	16
39) Methylcyclohexane	9.08	83	1415	0.232	ug/l	91
42) 1,2-Dichloroethane	8.13	62	1298	0.271	ug/l #	73
49) 1,4-Dioxane	9.20	88	209	2.751	ug/l #	1
51) 4-Methyl-2-Pentanone	9.99	43	4814	0.971	ug/l	89
52) Toluene	10.15	92	1802	0.200	ug/l	97
58) 2-Chloroethyl Vinyl ether	9.70	63	1927	0.738	ug/l #	88
59) 2-Hexanone	10.75	43	3408	0.958	ug/l	93
64) Tetrachloroethene	10.63	164	1077	0.277	ug/l #	79
65) Chlorobenzene	11.43	112	2192	0.238	ug/l	96
68) m/p-Xylenes	11.62	106	2701	0.446	ug/l	87
73) Isopropylbenzene	12.25	105	3019	0.260	ug/l	91
74) N-amyl acetate	12.07	43	919	0.213	ug/l #	54
75) 1,1,2,2-Tetrachloroethane	12.50	83	816	Below Cal	#	88
76) 1,2,3-Trichloropropane	12.40	75	82582	26.251	ug/l #	100
77) Bromobenzene	12.52	156	691	0.228	ug/l	71
78) n-propylbenzene	12.59	91	3389	0.263	ug/l	94
79) 2-Chlorotoluene	12.67	91	2006	Below Cal		94

Data Path : Z:\VOASRV\HPCHEM1\MSVOA N\DATA\VN071519\  
 Data File : VN056705.D  
 Acq On : 15 Jul 2019 12:33  
 Operator : JC/SP  
 Sample : K3591-07  
 Misc : 5.00mL/MSVOA N/WATER  
 ALS Vial : 11 Sample Multiplier: 1

Instrument :  
 MSVOA\_N  
 ClientSampleId :  
 LOD-MDL-WATER-01-QT3-2019

Quant Time: Jul 16 04:21:06 2019  
 Quant Method : Z:\VOASRV\HPCHEM1\MSVOA\_N\METHODS\82N071519W.M  
 Quant Title : SW846 8260  
 QLast Update : Tue Jul 16 01:25:25 2019  
 Response via : Initial Calibration

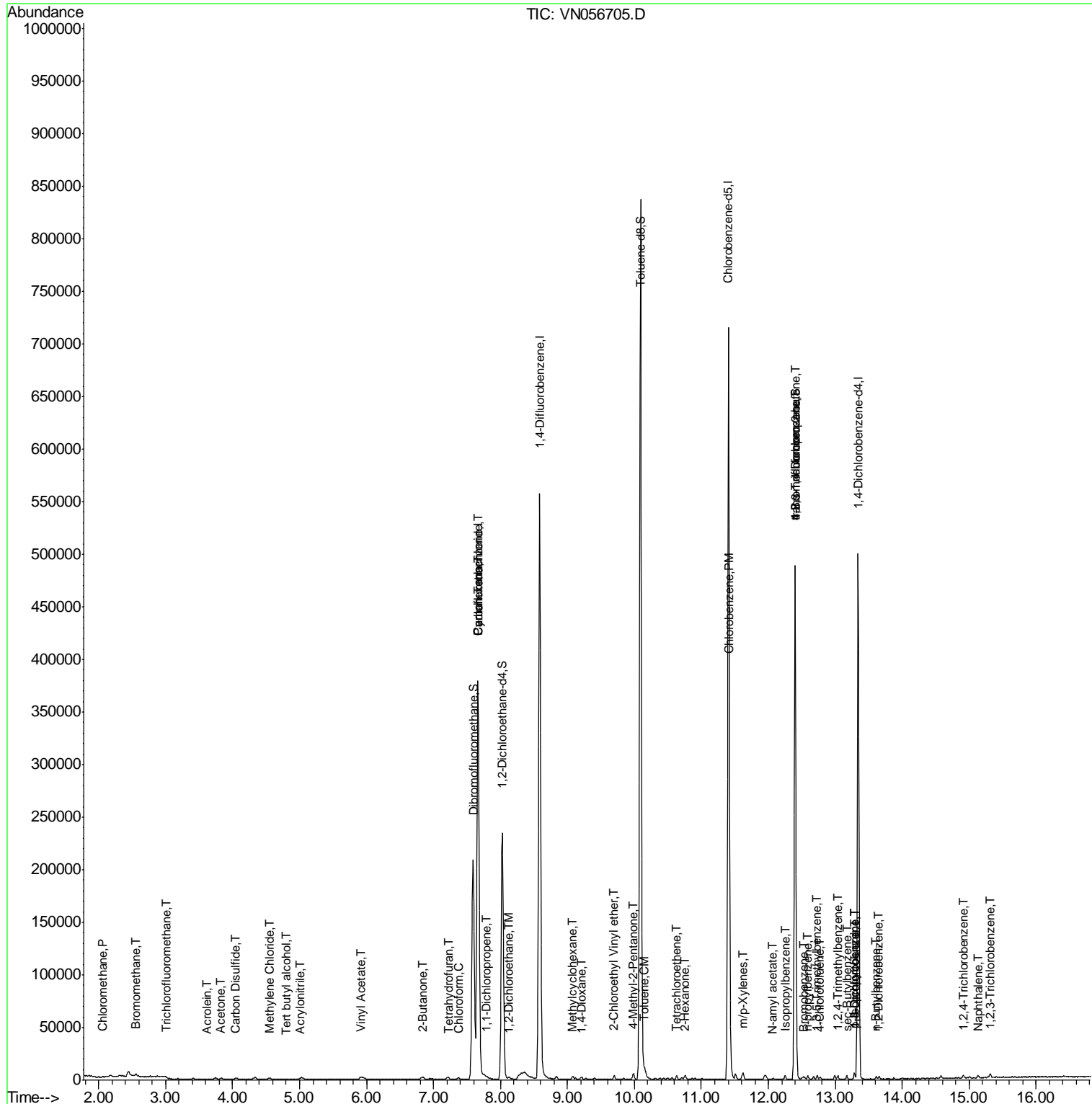
Internal Standards	R.T.	QIon	Response	Conc	Units	Dev(Min)
80) 1,3,5-Trimethylbenzene	12.73	105	2322	0.236	ug/l	85
81) trans-1,4-Dichloro-2-buten	12.40	75	82582	81.072	ug/l #	13
82) 4-Chlorotoluene	12.77	91	2406	0.318	ug/l	87
83) tert-Butylbenzene	12.99	119	2359	Below Cal		94
84) 1,2,4-Trimethylbenzene	13.04	105	2399	0.250	ug/l	99
85) sec-Butylbenzene	13.17	105	2856	0.261	ug/l	92
86) p-Isopropyltoluene	13.29	119	2768	0.280	ug/l	96
87) 1,3-Dichlorobenzene	13.28	146	1462	0.294	ug/l	95
88) 1,4-Dichlorobenzene	13.28	146	1462	0.302	ug/l	94
89) n-Butylbenzene	13.61	91	1957	0.246	ug/l	94
91) 1,2-Dichlorobenzene	13.66	146	1465	0.288	ug/l	91
93) 1,2,4-Trichlorobenzene	14.91	180	1306	4.122	ug/l #	85
94) Hexachlorobutadiene	15.01	225	616	Below Cal	#	76
95) Naphthalene	15.13	128	3126	4.895	ug/l #	77
96) 1,2,3-Trichlorobenzene	15.32	180	1563	3.846	ug/l	93

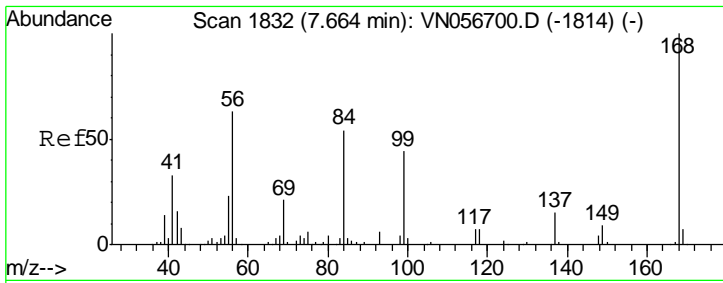
(#) = qualifier out of range (m) = manual integration (+) = signals summed

Data Path : Z:\VOASRV\HPCHEM1\MSVOA N\DATA\VN071519\  
 Data File : VN056705.D  
 Acq On : 15 Jul 2019 12:33  
 Operator : JC/SP  
 Sample : K3591-07  
 Misc : 5.00mL/MSVOA N/WATER  
 ALS Vial : 11 Sample Multiplier: 1

Instrument :  
 MSVOA\_N  
 Client Sampled :  
 LOD-MDL-WATER-01-QT3-2019

Quant Time: Jul 16 04:21:06 2019  
 Quant Method : Z:\VOASRV\HPCHEM1\MSVOA\_N\METHODS\82N071519W.M  
 Quant Title : SW846 8260  
 QLast Update : Tue Jul 16 01:25:25 2019  
 Response via : Initial Calibration

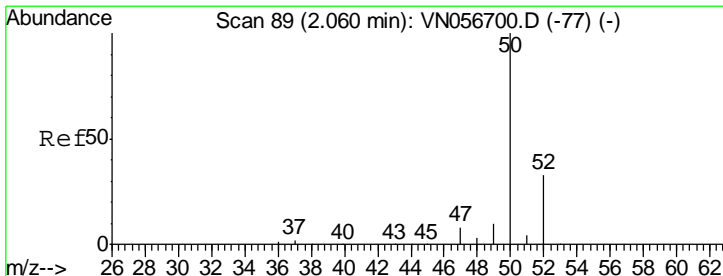
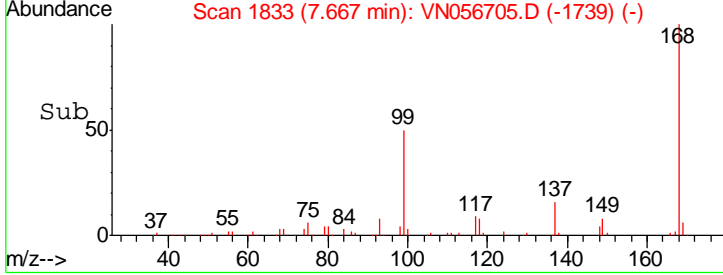
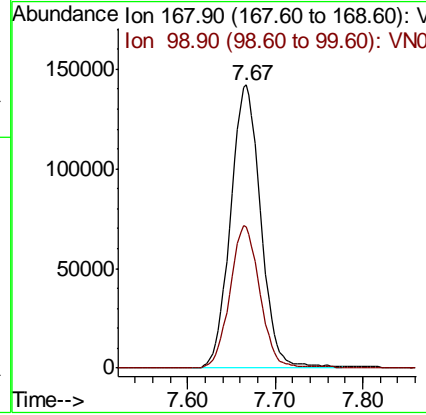
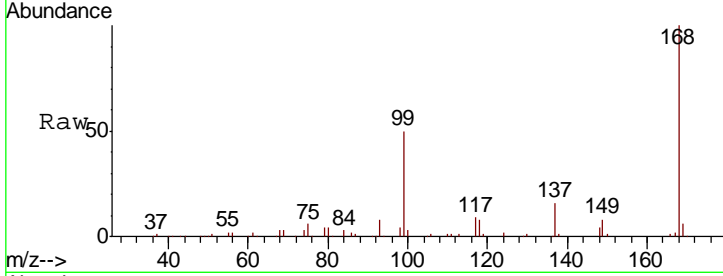




#1  
 Pentafluorobenzene  
 Concen: 50.000 ug/l  
 RT: 7.67 min Scan# 1833  
 Delta R.T. 0.00 min  
 Lab File: VN056705.D  
 Acq: 15 Jul 2019 12:33

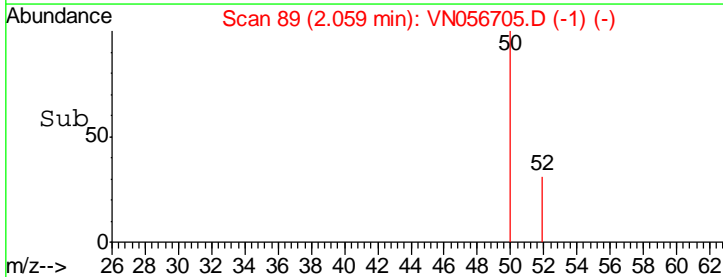
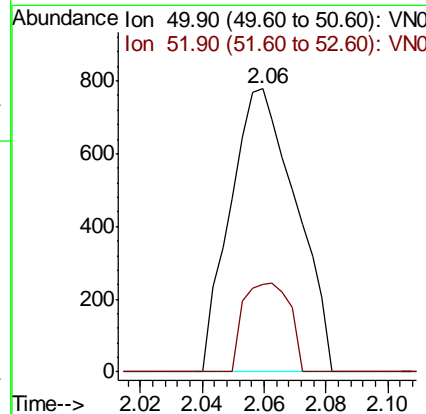
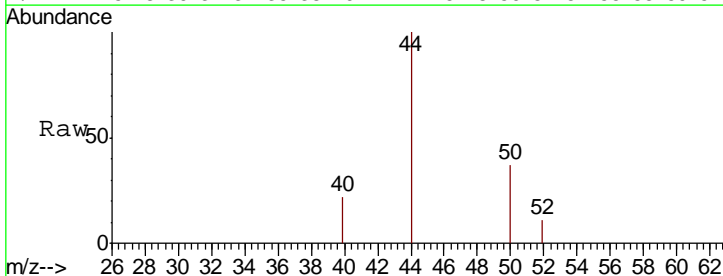
Instrument : MSVOA\_N  
 ClientSampled : LOD-MDL-WATER-01-QT3-2019

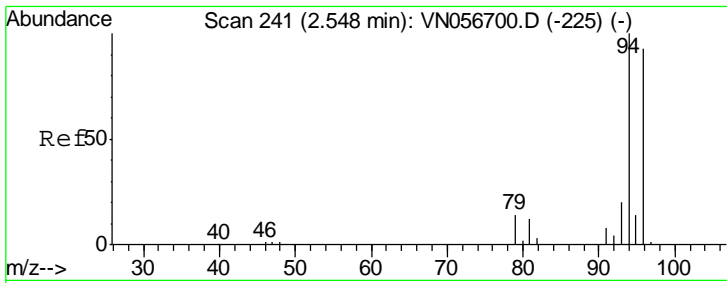
Tot Ion:168 Resp: 340925  
 Ion Ratio Lower Upper  
 168 100  
 99 49.7 39.4 59.2



#3  
 Chloromethane  
 Concen: 0.267 ug/l  
 RT: 2.06 min Scan# 89  
 Delta R.T. -0.00 min  
 Lab File: VN056705.D  
 Acq: 15 Jul 2019 12:33

Tgt Ion: 50 Resp: 1150  
 Ion Ratio Lower Upper  
 50 100  
 52 30.8 26.5 39.7

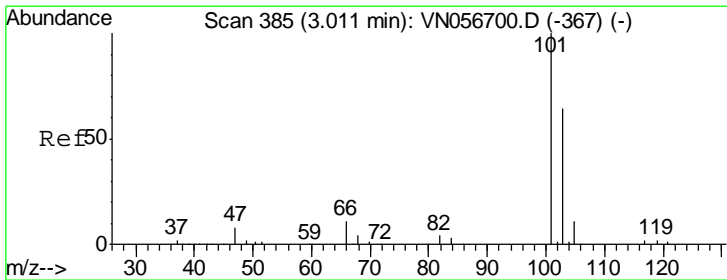
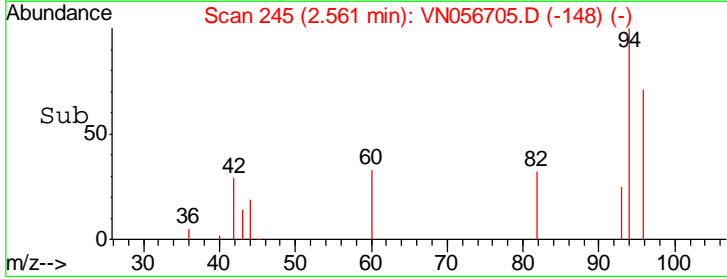
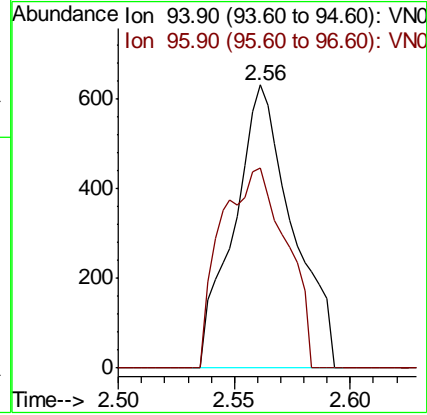
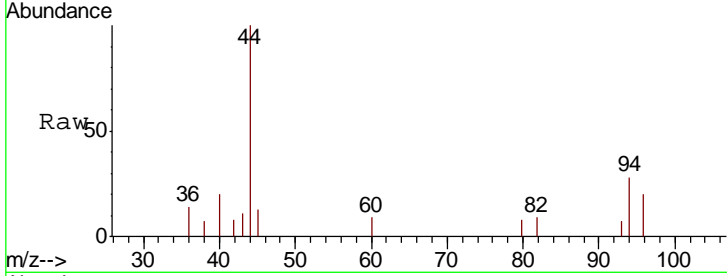




#5  
 Bromomethane  
 Concen: 0.453 ug/l  
 RT: 2.56 min Scan# 245  
 Delta R.T. 0.01 min  
 Lab File: VN056705.D  
 Acq: 15 Jul 2019 12:33

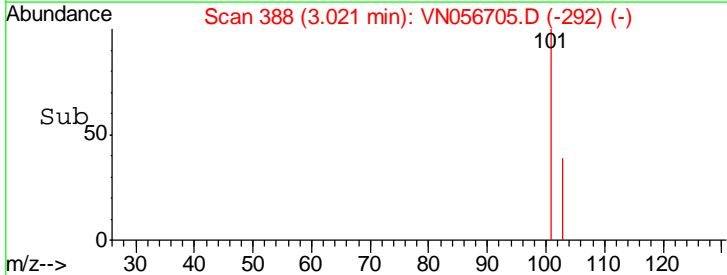
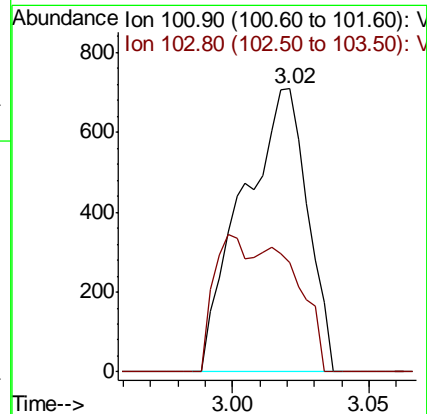
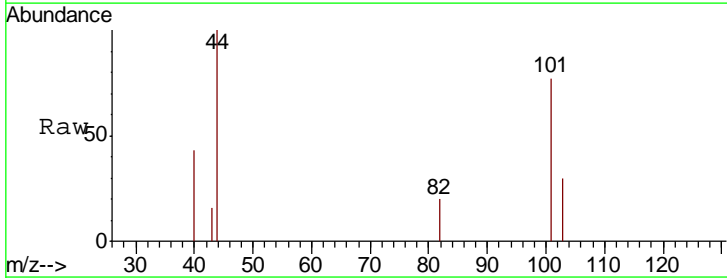
Instrument :  
 MSVOA\_N  
 ClientSampled :  
 LOD-MDL-WATER-01-QT3-2019

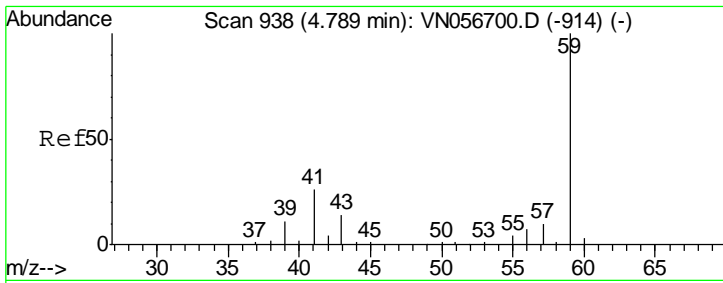
Tgt Ion: 94 Resp: 1105  
 Ion Ratio Lower Upper  
 94 100  
 96 70.5 74.0 111.0#



#7  
 Trichlorofluoromethane  
 Concen: 0.220 ug/l  
 RT: 3.02 min Scan# 388  
 Delta R.T. 0.01 min  
 Lab File: VN056705.D  
 Acq: 15 Jul 2019 12:33

Tgt Ion: 101 Resp: 1170  
 Ion Ratio Lower Upper  
 101 100  
 103 38.6 51.5 77.3#

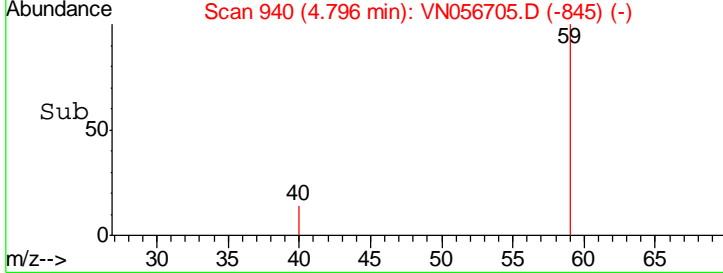
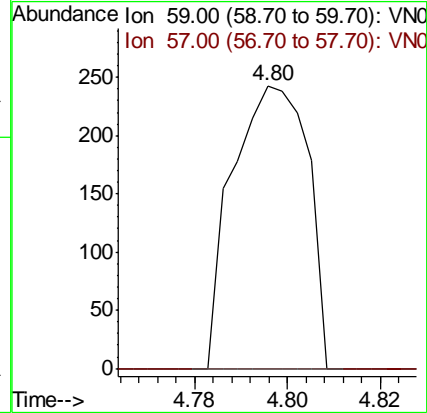
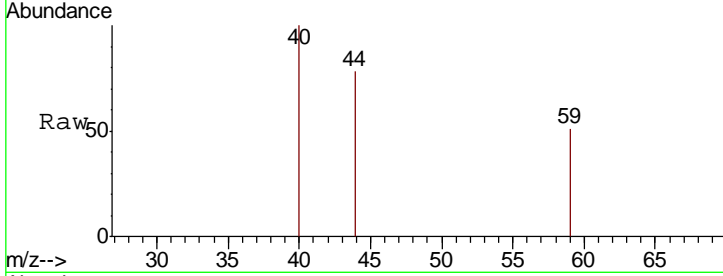




#11  
 Tert butyl alcohol  
 Concen: 0.438 ug/l  
 RT: 4.80 min Scan# 940  
 Delta R.T. 0.01 min  
 Lab File: VN056705.D  
 Acq: 15 Jul 2019 12:33

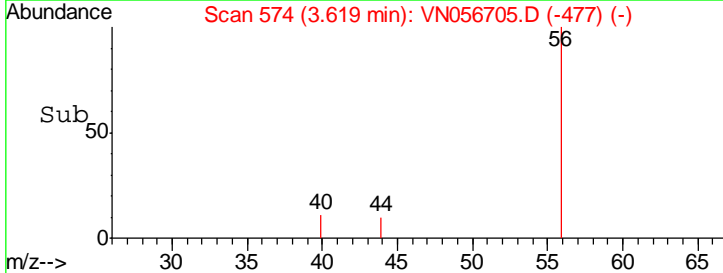
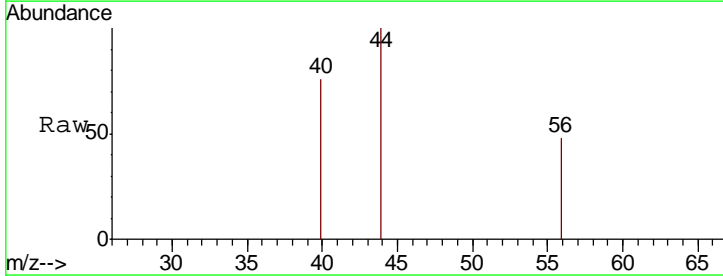
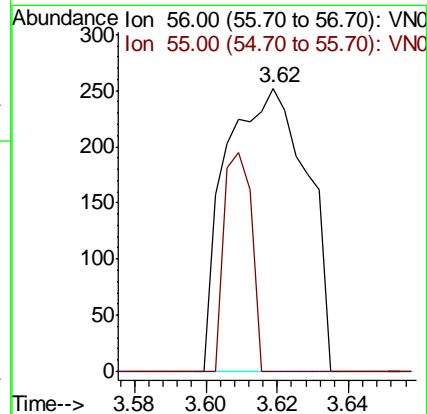
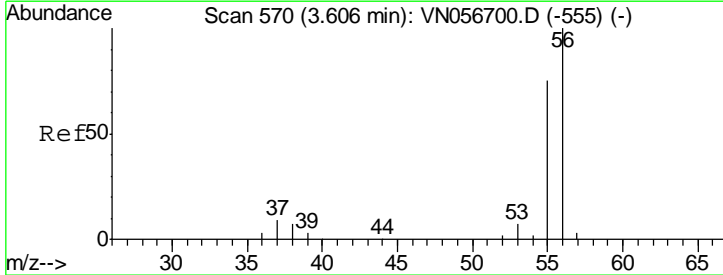
Instrument : MSVOA\_N  
 ClientSampled : LOD-MDL-WATER-01-QT3-2019

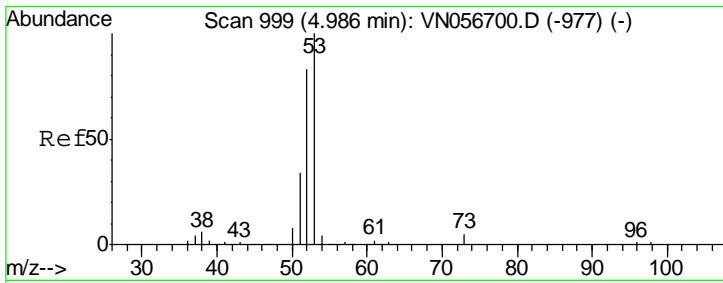
Tgt Ion	Resp	Lower	Upper
59	100		
57	0.0	8.0	12.0#



#13  
 Acrolein  
 Concen: 12.438 ug/l  
 RT: 3.62 min Scan# 574  
 Delta R.T. 0.01 min  
 Lab File: VN056705.D  
 Acq: 15 Jul 2019 12:33

Tgt Ion	Resp	Lower	Upper
56	100		
55	26.3	58.0	87.0#

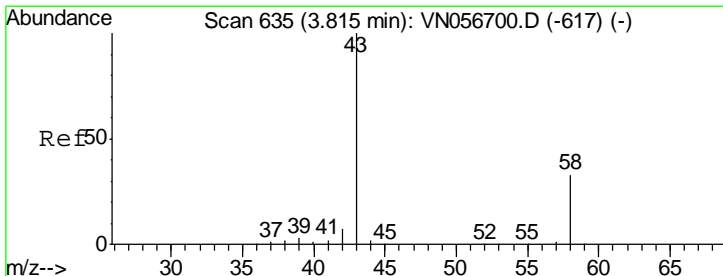
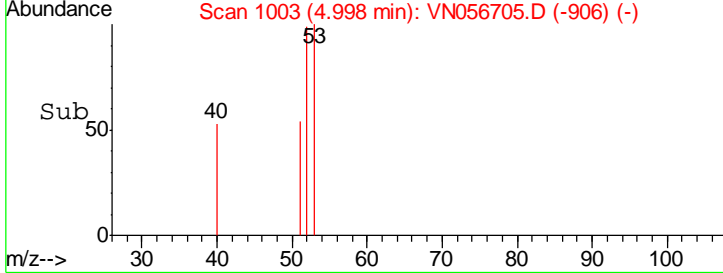
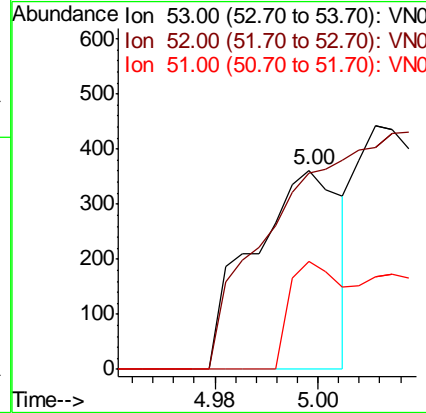
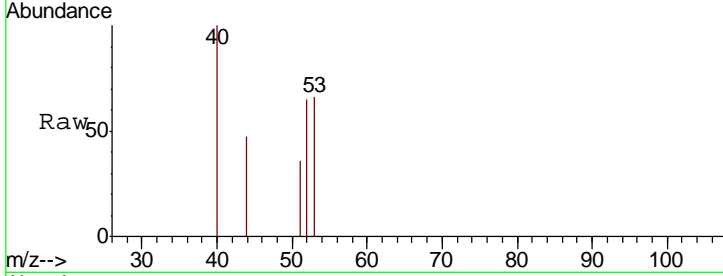




#15  
 Acrylonitrile  
 Concen: 0.236 ug/l  
 RT: 5.00 min Scan# 1003  
 Delta R.T. 0.01 min  
 Lab File: VN056705.D  
 Acq: 15 Jul 2019 12:33

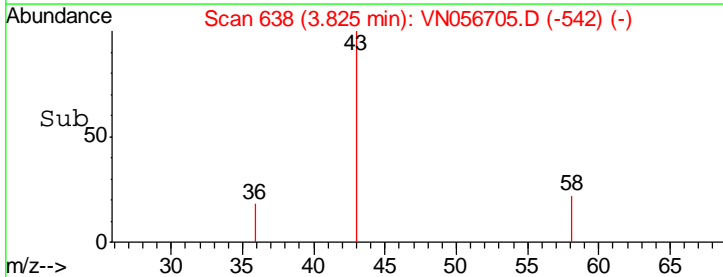
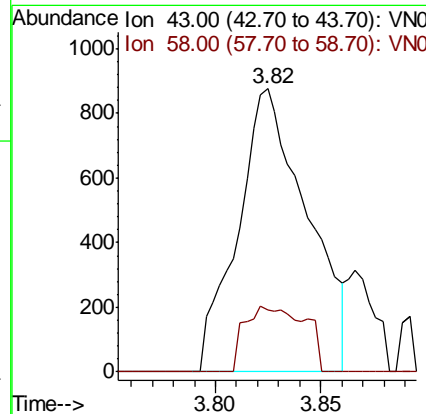
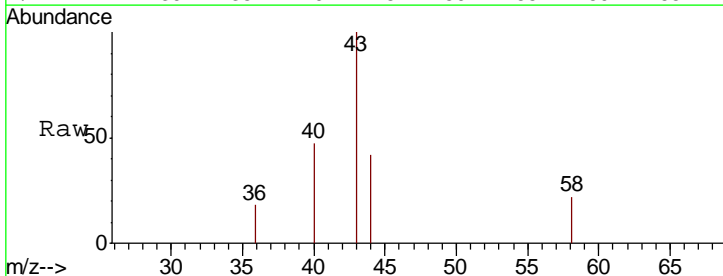
Instrument : MSVOA\_N  
 ClientSampled : LOD-MDL-WATER-01-QT3-2019

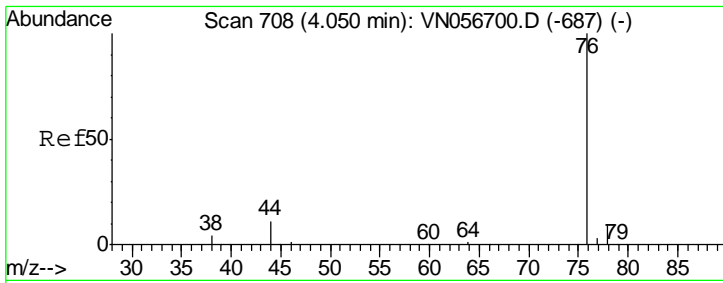
Tgt Ion	Resp	Lower	Upper
53	100		
52	0.0	66.6	99.8#
51	31.1	28.4	42.6



#16  
 Acetone  
 Concen: 1.156 ug/l  
 RT: 3.82 min Scan# 638  
 Delta R.T. 0.01 min  
 Lab File: VN056705.D  
 Acq: 15 Jul 2019 12:33

Tgt Ion	Resp	Lower	Upper
43	100		
58	22.0	26.7	40.1#

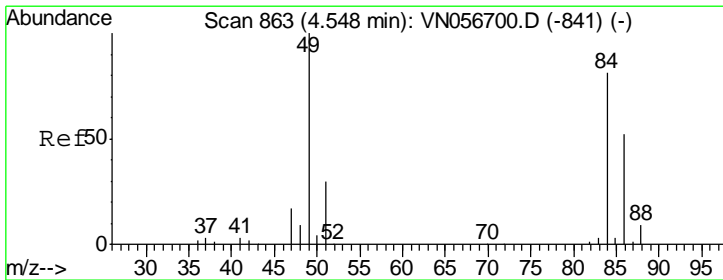
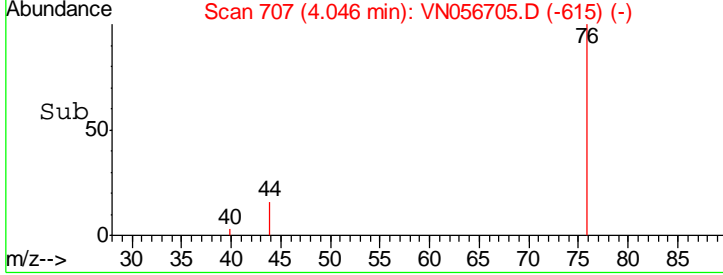
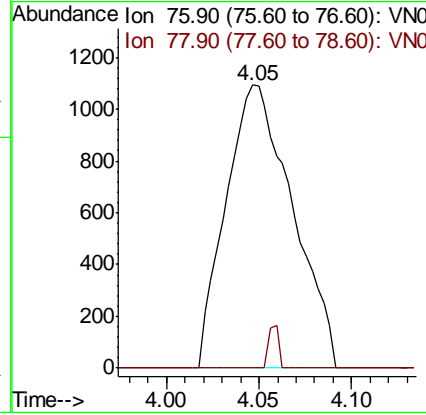
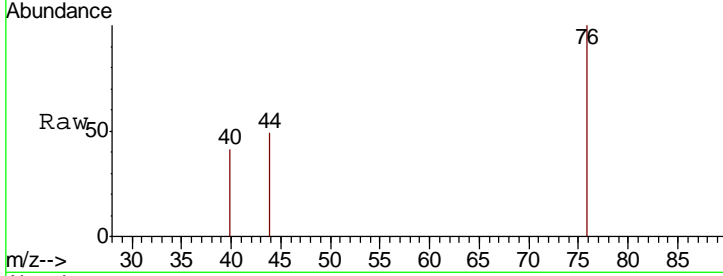




#17  
 Carbon Disulfide  
 Concen: 0.321 ug/l  
 RT: 4.05 min Scan# 707  
 Delta R.T. -0.00 min  
 Lab File: VN056705.D  
 Acq: 15 Jul 2019 12:33

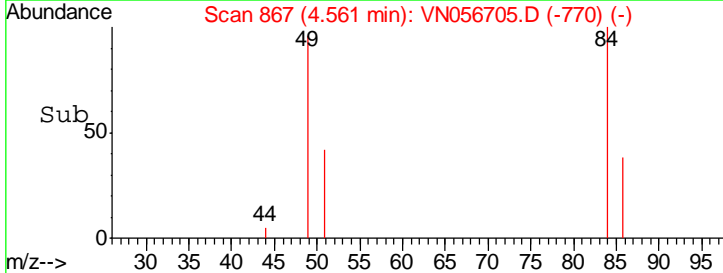
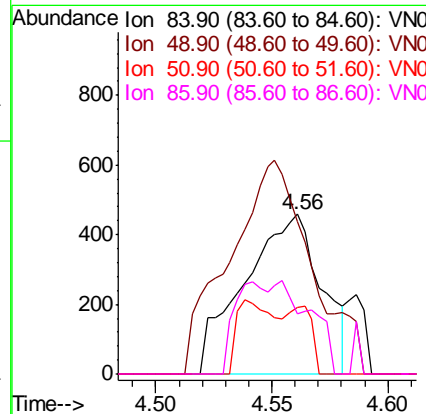
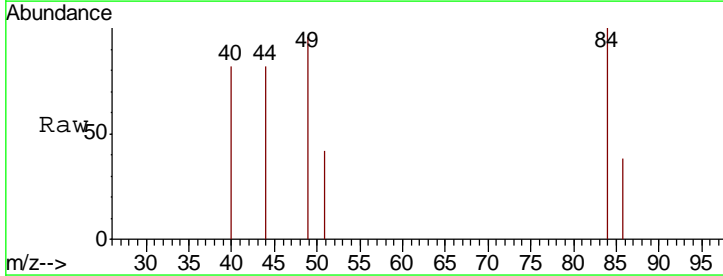
Instrument : MSVOA\_N  
 ClientSampled : LOD-MDL-WATER-01-QT3-2019

Tgt Ion	Resp	Lower	Upper
76	100		
78	0.0	7.4	11.0#

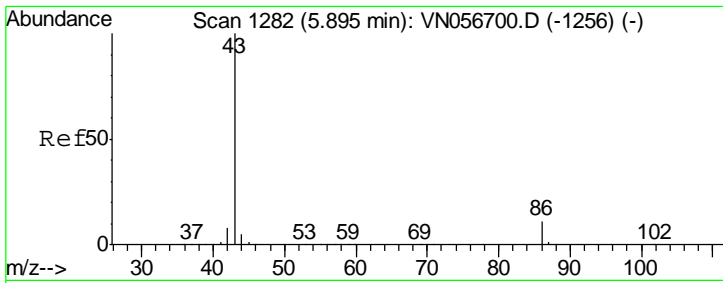


#20  
 Methylene Chloride  
 Concen: 0.280 ug/l  
 RT: 4.56 min Scan# 867  
 Delta R.T. 0.01 min  
 Lab File: VN056705.D  
 Acq: 15 Jul 2019 12:33

Tgt Ion	Resp	Lower	Upper
84	100		
49	57.9	98.2	147.4#
51	42.1	29.6	44.4
86	38.0	51.0	76.4#



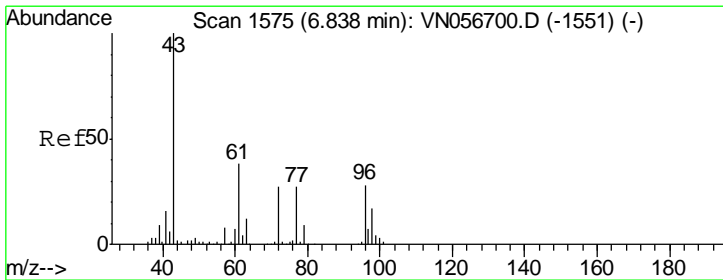
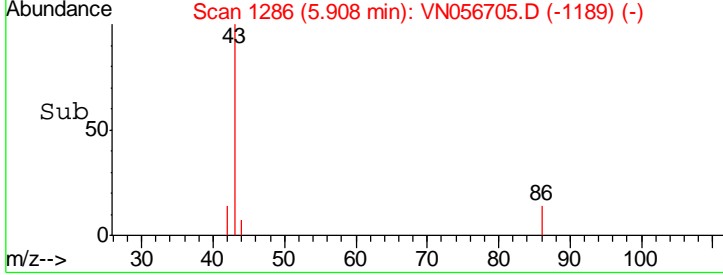
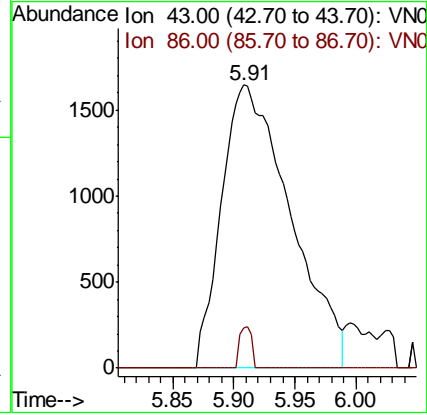
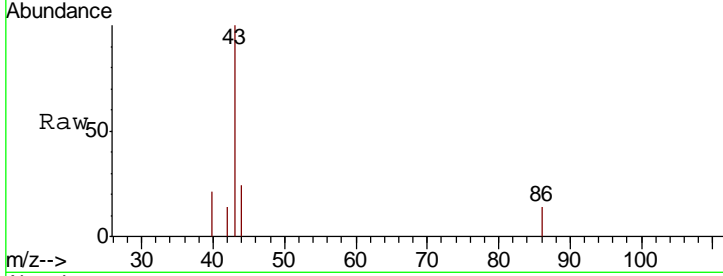




#23  
 Vinyl Acetate  
 Concen: 0.728 ug/l  
 RT: 5.91 min Scan# 1286  
 Delta R.T. 0.01 min  
 Lab File: VN056705.D  
 Acq: 15 Jul 2019 12:33

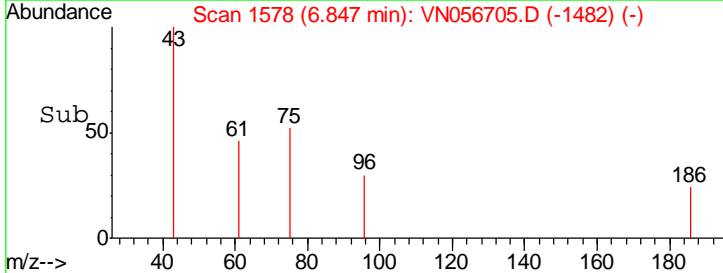
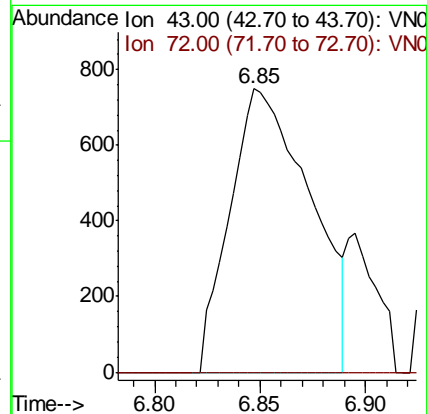
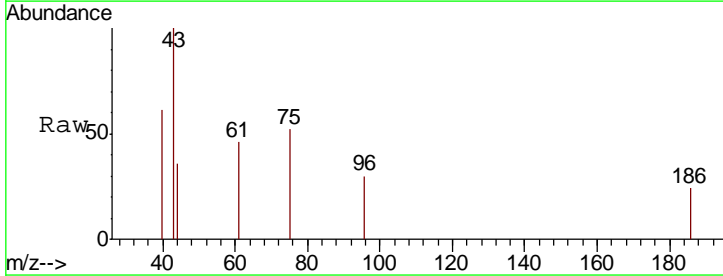
**Instrument :**  
 MSVOA\_N  
**ClientSampled :**  
 LOD-MDL-WATER-01-QT3-2019

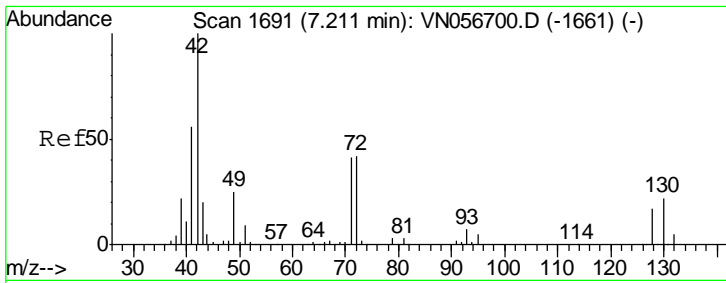
Tgt Ion	Resp	Lower	Upper
43	100		
86	14.3	8.5	12.7#



#25  
 2-Butanone  
 Concen: 0.780 ug/l  
 RT: 6.85 min Scan# 1578  
 Delta R.T. 0.01 min  
 Lab File: VN056705.D  
 Acq: 15 Jul 2019 12:33

Tgt Ion	Resp	Lower	Upper
43	100		
72	0.0	21.2	31.8#

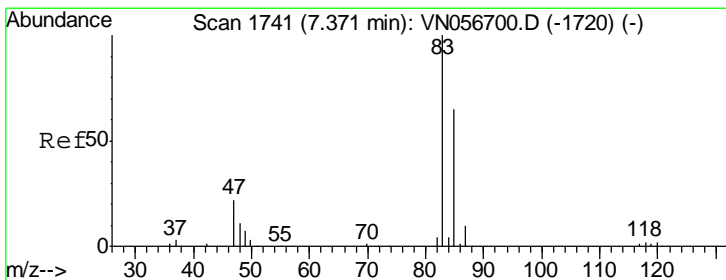
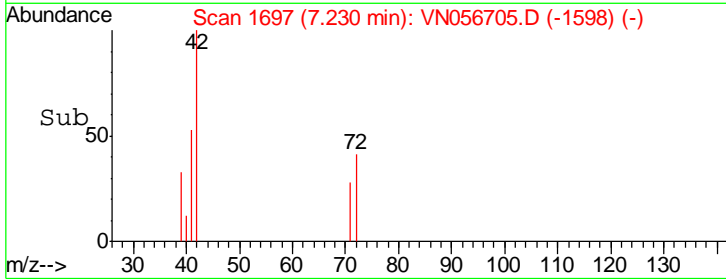
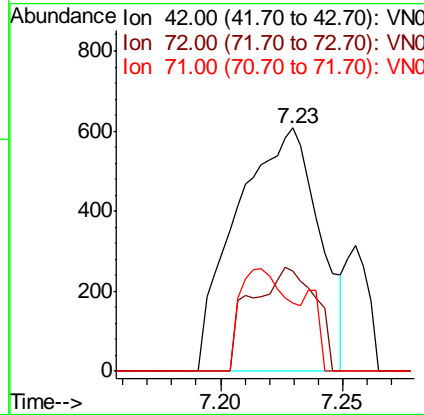
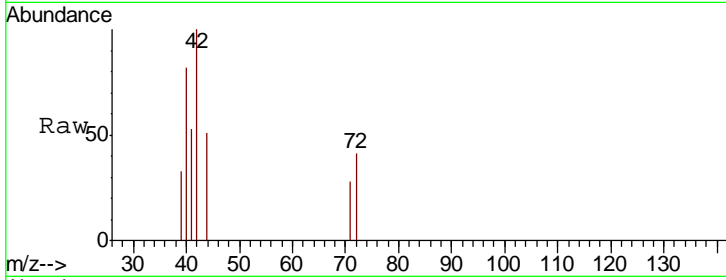




#29  
 Tetrahydrofuran  
 Concen: 0.864 ug/l  
 RT: 7.23 min Scan# 1697  
 Delta R.T. 0.02 min  
 Lab File: VN056705.D  
 Acq: 15 Jul 2019 12:33

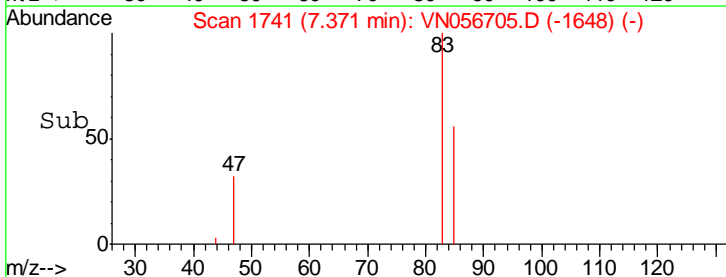
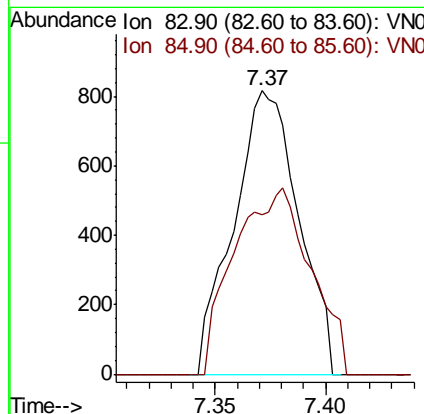
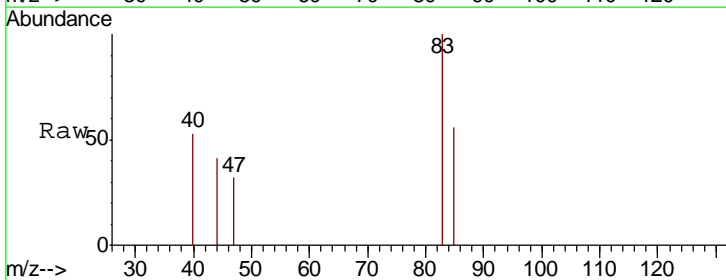
Instrument : MSVOA\_N  
 ClientSampled : LOD-MDL-WATER-01-QT3-2019

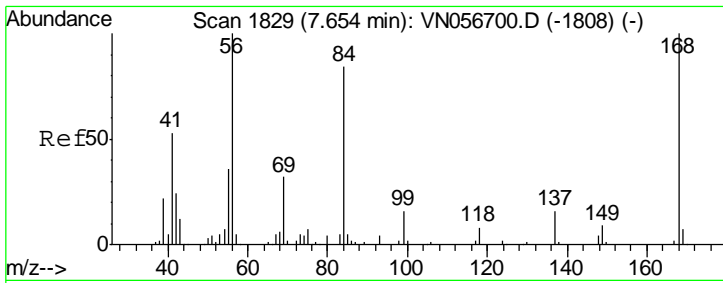
Tgt Ion	Resp	Lower	Upper
42	1431		
72	32.9	33.5	50.3#
71	25.4	31.8	47.8#



#30  
 Chloroform  
 Concen: 0.263 ug/l  
 RT: 7.37 min Scan# 1741  
 Delta R.T. -0.00 min  
 Lab File: VN056705.D  
 Acq: 15 Jul 2019 12:33

Tgt Ion	Resp	Lower	Upper
83	1667		
85	56.3	51.9	77.9

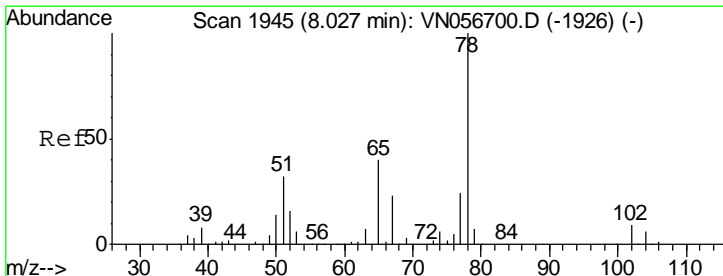
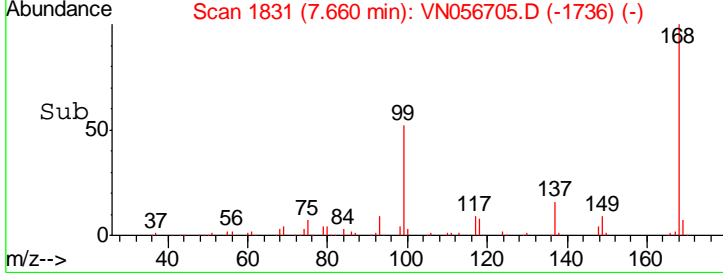
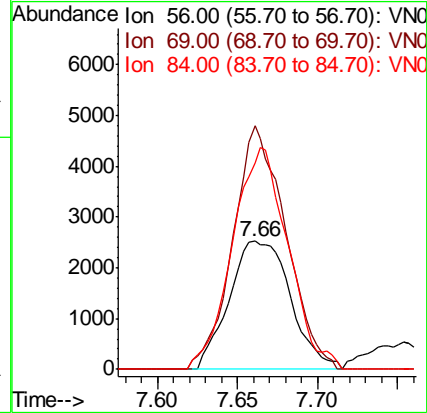
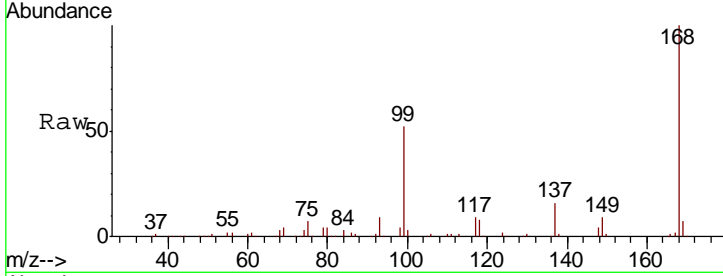




#31  
 Cyclohexane  
 Concen: 1.099 ug/l  
 RT: 7.66 min Scan# 1831  
 Delta R.T. 0.01 min  
 Lab File: VN056705.D  
 Acq: 15 Jul 2019 12:33

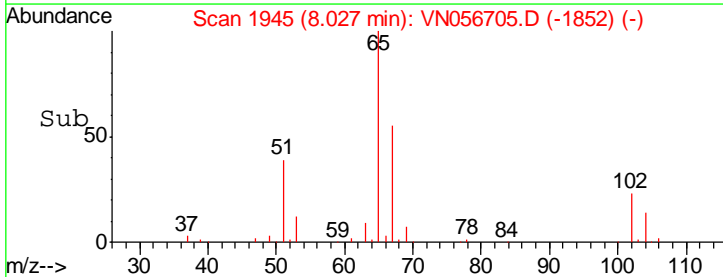
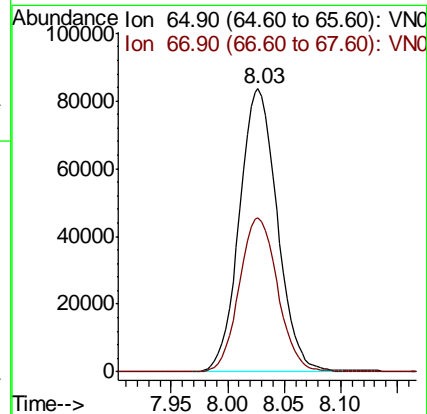
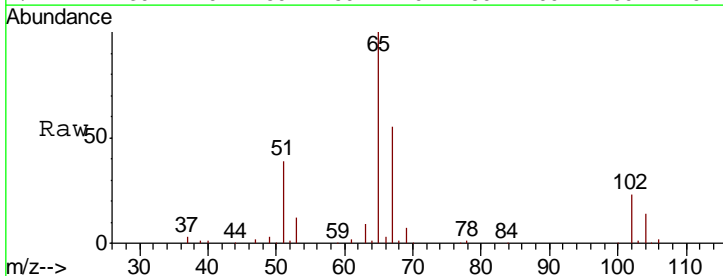
**Instrument :**  
 MSVOA\_N  
**ClientSampled :**  
 LOD-MDL-WATER-01-QT3-2019

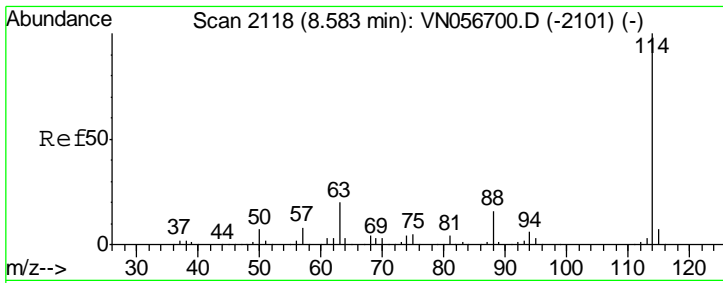
Tgt Ion	Resp	Lower	Upper
56	100		
69	190.4	25.8	38.8#
84	161.7	67.4	101.0#



#33  
 1,2-Dichloroethane-d4  
 Concen: 51.669 ug/l  
 RT: 8.03 min Scan# 1945  
 Delta R.T. -0.00 min  
 Lab File: VN056705.D  
 Acq: 15 Jul 2019 12:33

Tgt Ion	Resp	Lower	Upper
65	100		
67	55.2	0.0	109.0

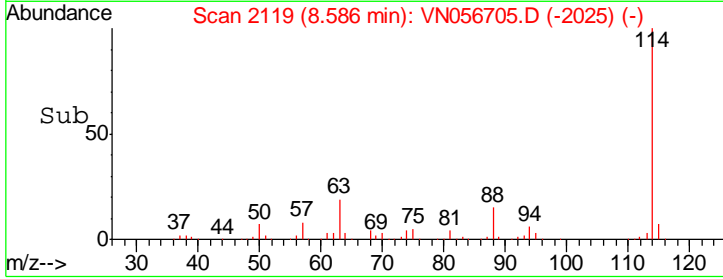
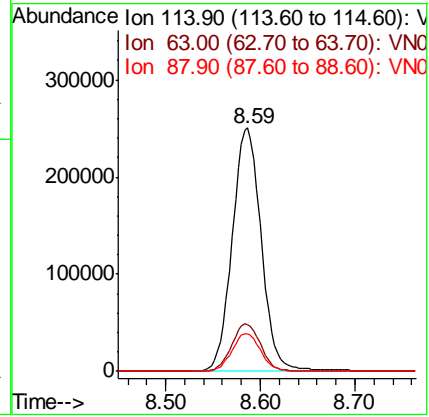
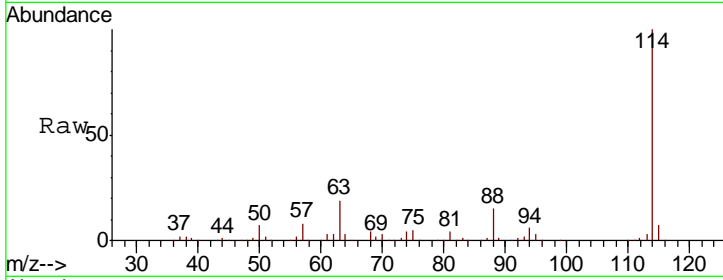




#34  
 1,4-Difluorobenzene  
 Concen: 50.000 ug/l  
 RT: 8.59 min Scan# 2119  
 Delta R.T. 0.00 min  
 Lab File: VN056705.D  
 Acq: 15 Jul 2019 12:33

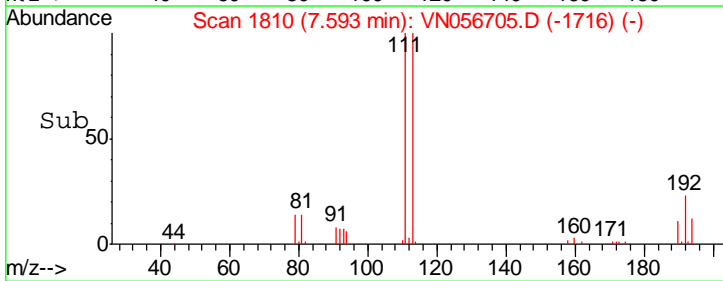
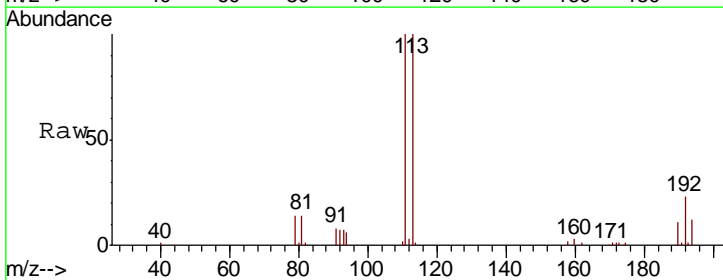
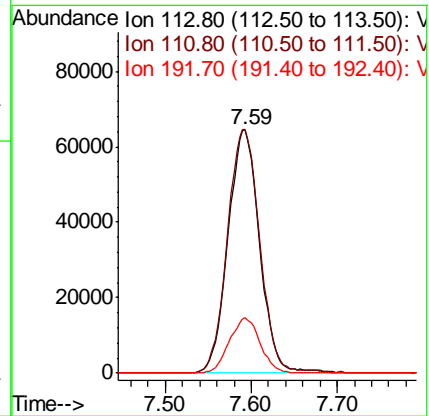
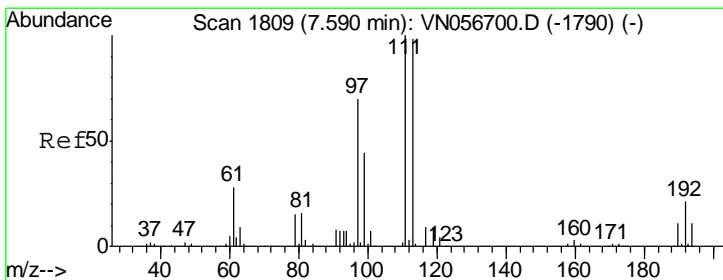
**Instrument :**  
 MSVOA\_N  
**ClientSampled :**  
 LOD-MDL-WATER-01-QT3-2019

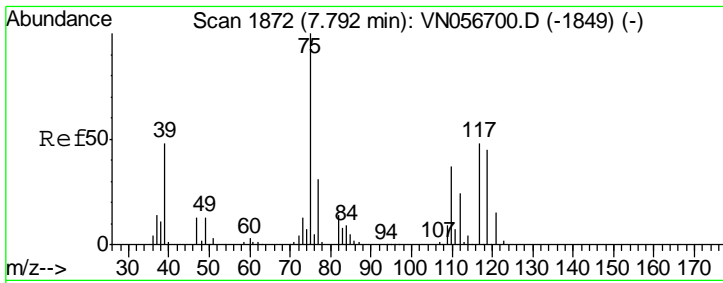
Tgt Ion	Resp	Lower	Upper
114	533995		
63	19.2	0.0	39.4
88	15.5	0.0	31.2



#35  
 Dibromofluoromethane  
 Concen: 49.492 ug/l  
 RT: 7.59 min Scan# 1810  
 Delta R.T. 0.00 min  
 Lab File: VN056705.D  
 Acq: 15 Jul 2019 12:33

Tgt Ion	Resp	Lower	Upper
113	164471		
111	101.7	81.8	122.6
192	22.1	17.5	26.3

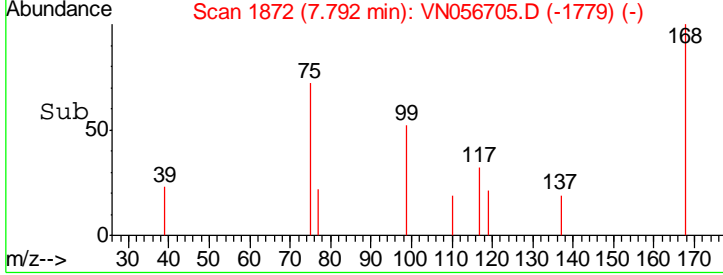
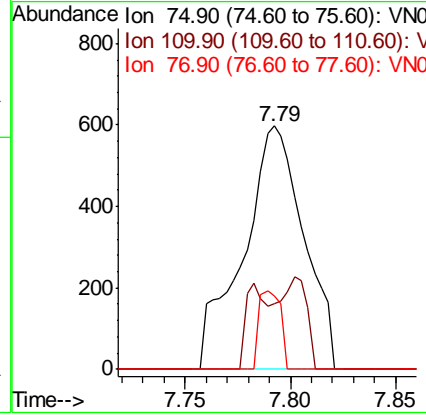
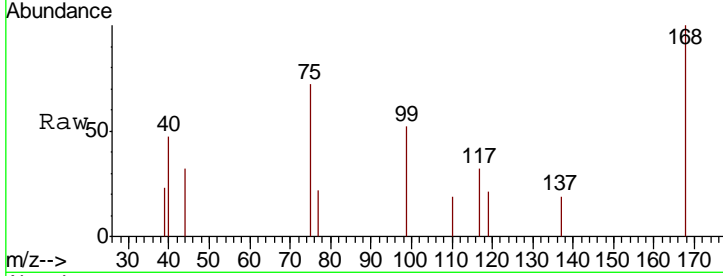




#36  
 1,1-Dichloropropene  
 Concen: 0.243 ug/l  
 RT: 7.79 min Scan# 1872  
 Delta R.T. -0.00 min  
 Lab File: VN056705.D  
 Acq: 15 Jul 2019 12:33

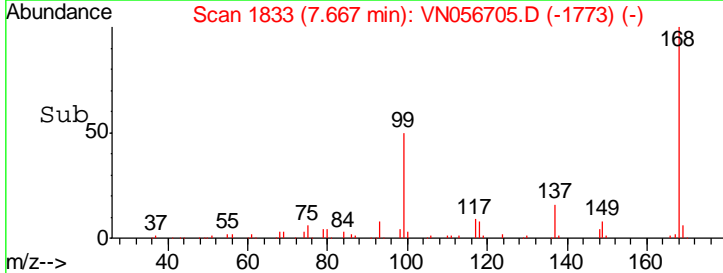
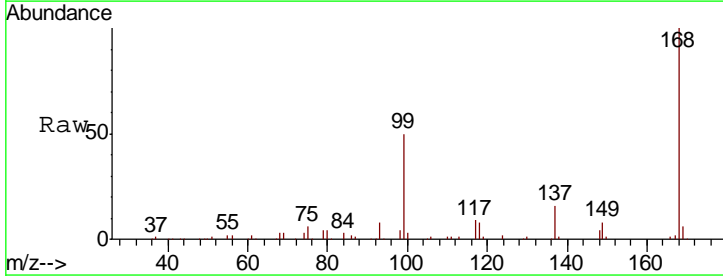
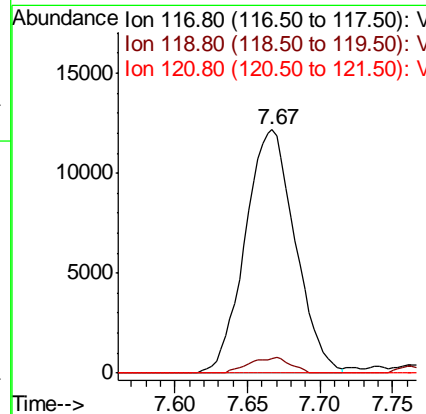
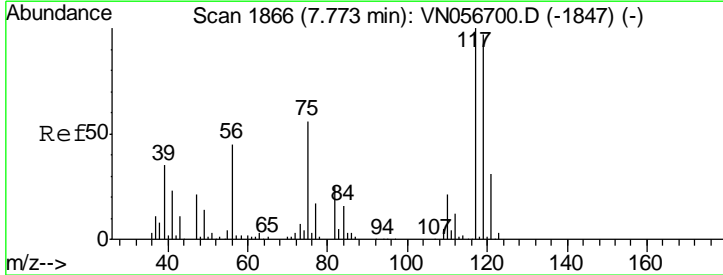
Instrument : MSVOA\_N  
 ClientSampled : LOD-MDL-WATER-01-QT3-2019

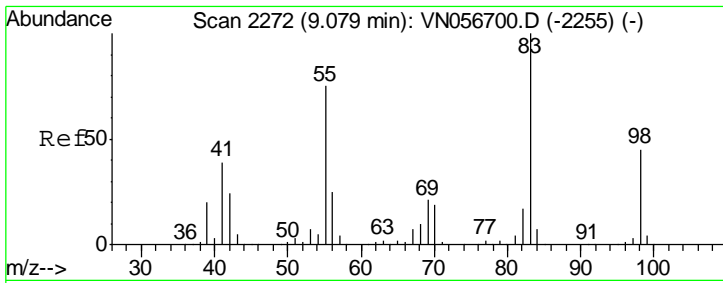
Tgt Ion	Resp	Lower	Upper
75	1203		
110	11.7	18.4	55.4#
77	11.5	24.6	36.8#



#38  
 Carbon Tetrachloride  
 Concen: 6.299 ug/l  
 RT: 7.67 min Scan# 1833  
 Delta R.T. -0.11 min  
 Lab File: VN056705.D  
 Acq: 15 Jul 2019 12:33

Tgt Ion	Resp	Lower	Upper
117	29192		
119	6.0	77.5	116.3#
121	0.0	24.7	37.1#

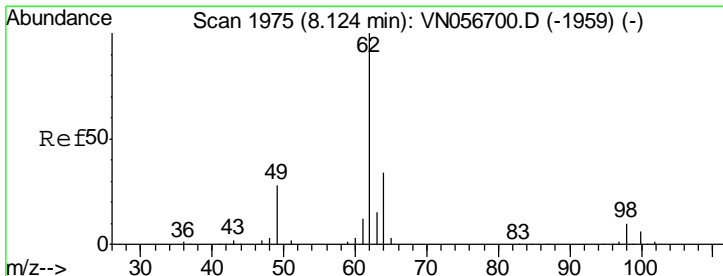
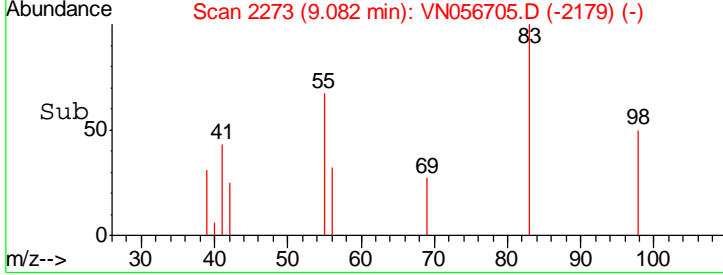
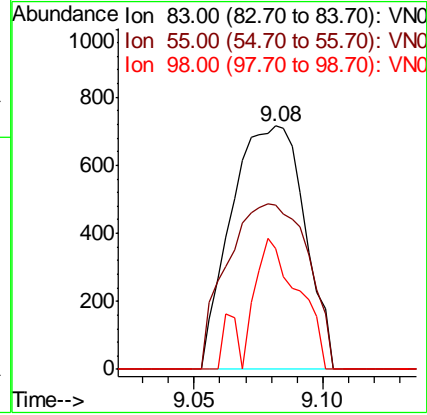
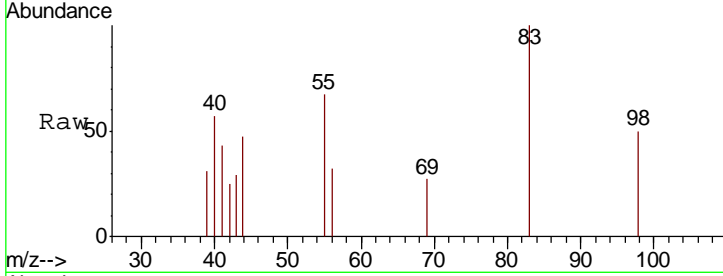




#39  
 Methylcyclohexane  
 Concen: 0.232 ug/l  
 RT: 9.08 min Scan# 2273  
 Delta R.T. 0.00 min  
 Lab File: VN056705.D  
 Acq: 15 Jul 2019 12:33

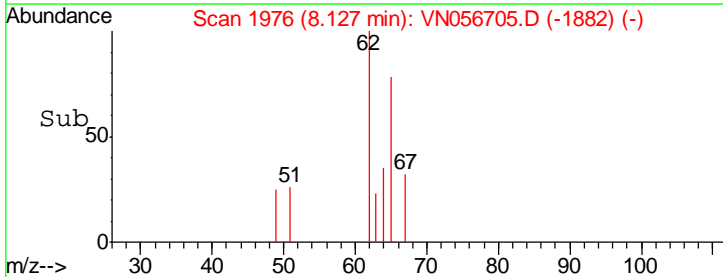
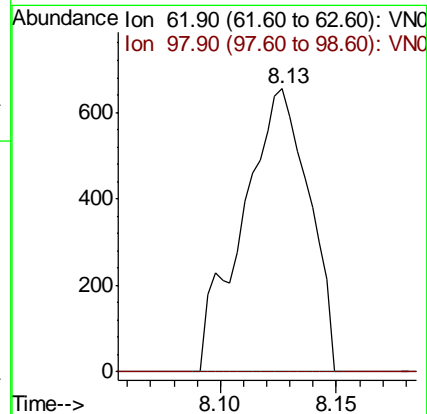
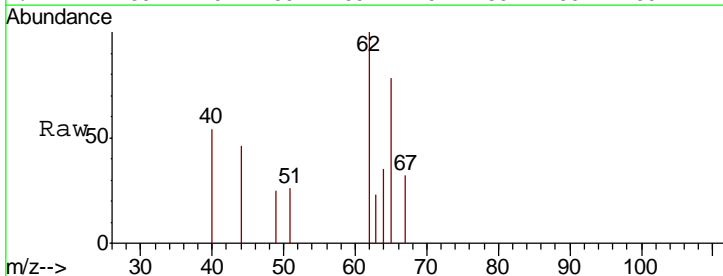
**Instrument :**  
 MSVOA\_N  
**ClientSampleId :**  
 LOD-MDL-WATER-01-QT3-2019

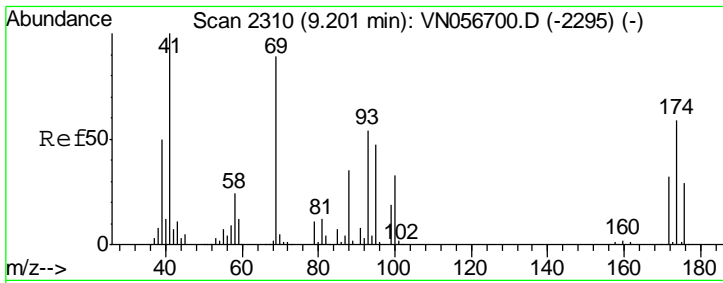
Tgt Ion	Resp	Lower	Upper
83	1415		
55	67.5	60.4	90.6
98	49.7	35.8	53.8



#42  
 1,2-Dichloroethane  
 Concen: 0.271 ug/l  
 RT: 8.13 min Scan# 1976  
 Delta R.T. 0.00 min  
 Lab File: VN056705.D  
 Acq: 15 Jul 2019 12:33

Tgt Ion	Resp	Lower	Upper
62	1298		
98	0.0	0.0	19.8

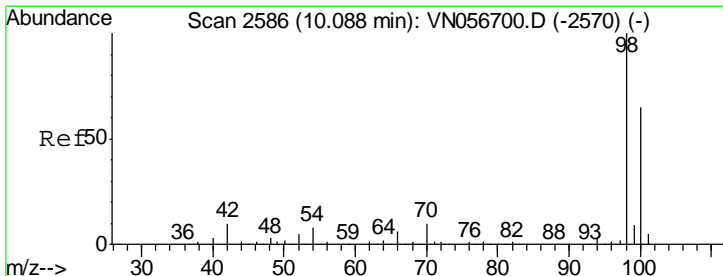
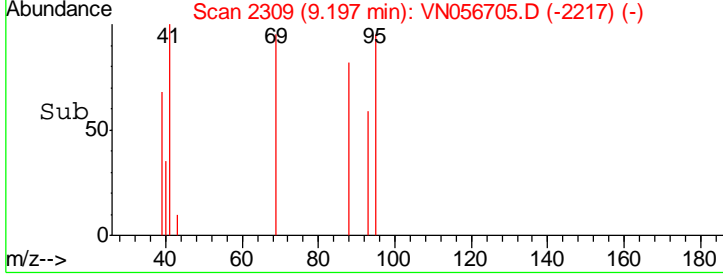
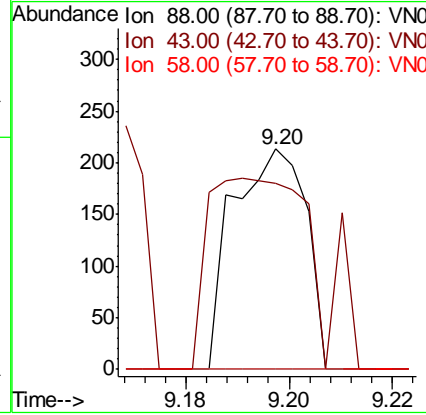
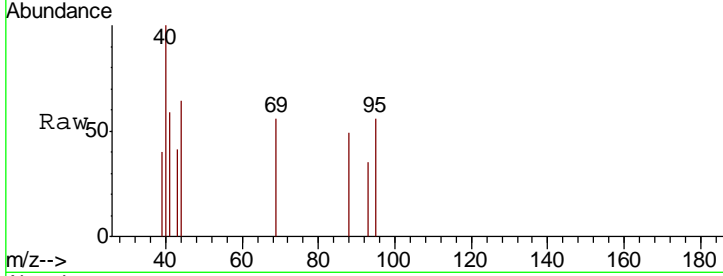




#49  
 1,4-Dioxane  
 Concen: 2.751 ug/l  
 RT: 9.20 min Scan# 2309  
 Delta R.T. -0.00 min  
 Lab File: VN056705.D  
 Acq: 15 Jul 2019 12:33

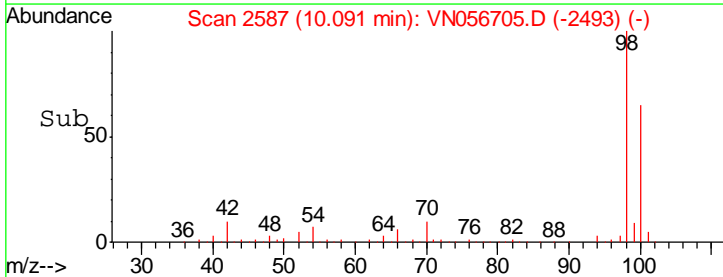
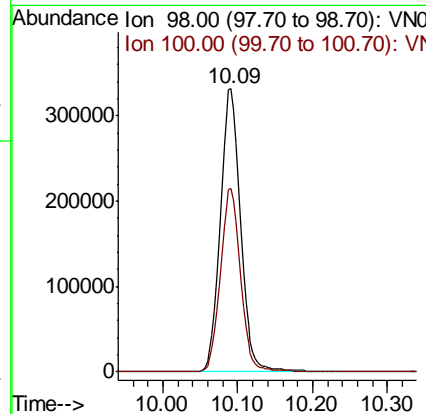
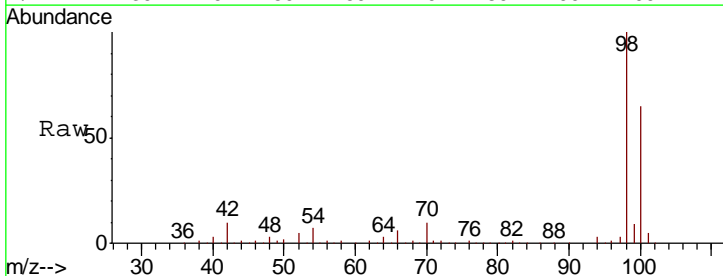
**Instrument :**  
 MSVOA\_N  
**ClientSampled :**  
 LOD-MDL-WATER-01-QT3-2019

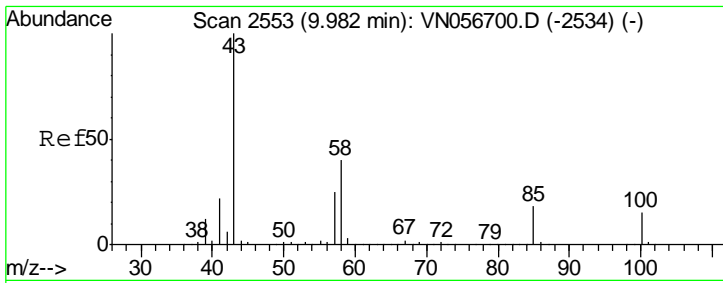
Tgt Ion	Resp	Lower	Upper
88	209		
88	100		
43	128.2	23.7	35.5#
58	0.0	55.6	83.4#



#50  
 Toluene-d8  
 Concen: 48.776 ug/l  
 RT: 10.09 min Scan# 2587  
 Delta R.T. 0.00 min  
 Lab File: VN056705.D  
 Acq: 15 Jul 2019 12:33

Tgt Ion	Resp	Lower	Upper
98	626033		
98	100		
100	64.4	52.0	78.0

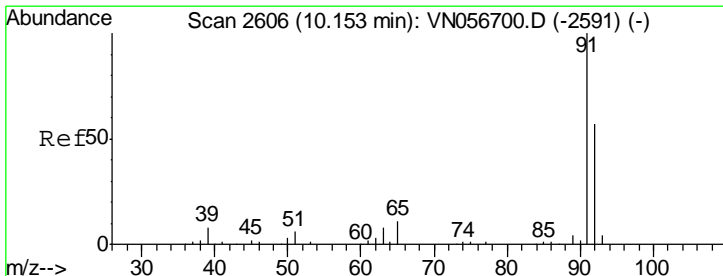
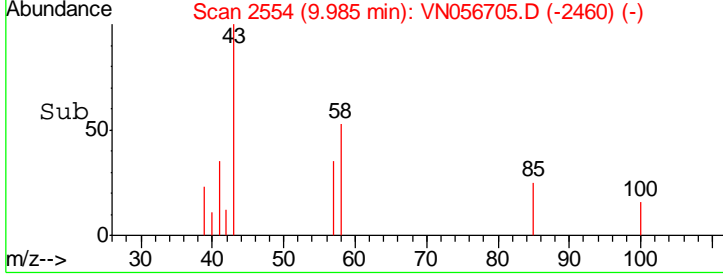
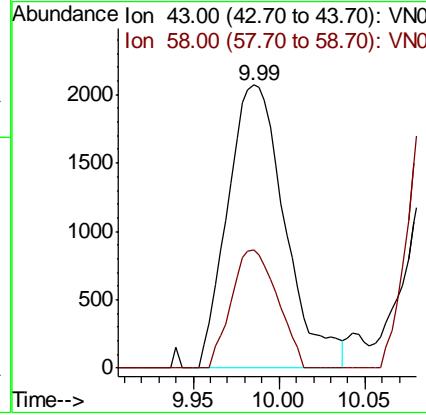
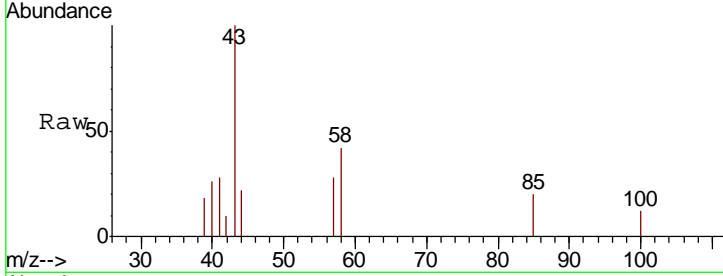




#51  
 4-Methyl-2-Pentanone  
 Concen: 0.971 ug/l  
 RT: 9.99 min Scan# 2554  
 Delta R.T. 0.00 min  
 Lab File: VN056705.D  
 Acq: 15 Jul 2019 12:33

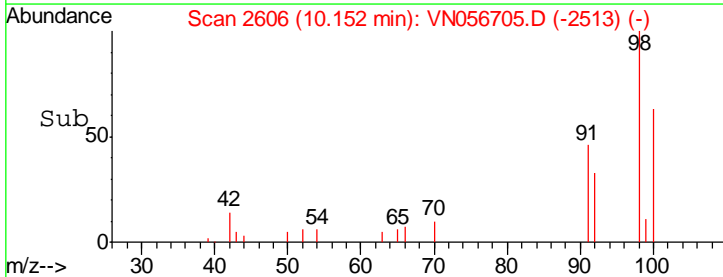
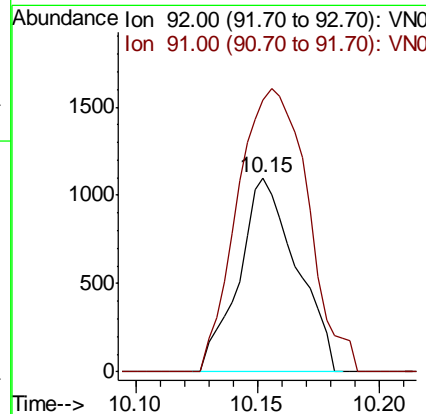
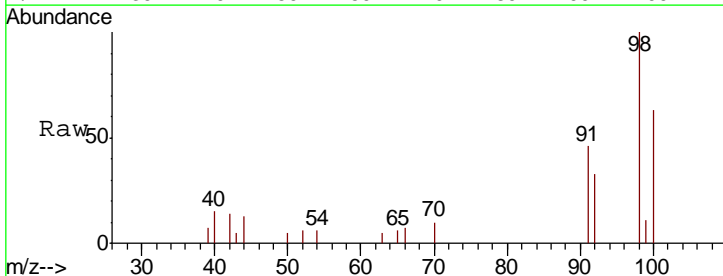
Instrument : MSVOA\_N  
 ClientSampled : LOD-MDL-WATER-01-QT3-2019

Tot Ion: 43 Resp: 4814  
 Ion Ratio Lower Upper  
 43 100  
 58 33.4 32.0 48.0

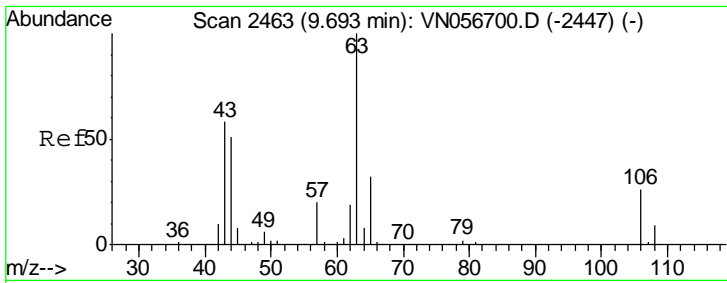


#52  
 Toluene  
 Concen: 0.200 ug/l  
 RT: 10.15 min Scan# 2606  
 Delta R.T. -0.00 min  
 Lab File: VN056705.D  
 Acq: 15 Jul 2019 12:33

Tgt Ion: 92 Resp: 1802  
 Ion Ratio Lower Upper  
 92 100  
 91 178.4 139.9 209.9



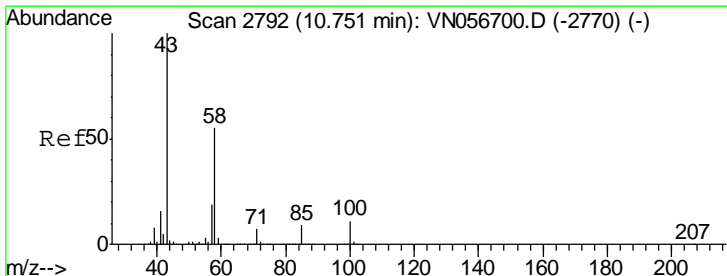
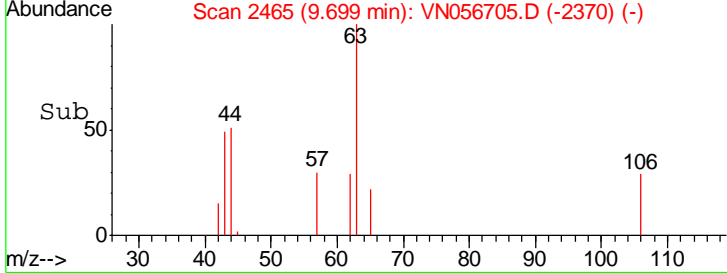
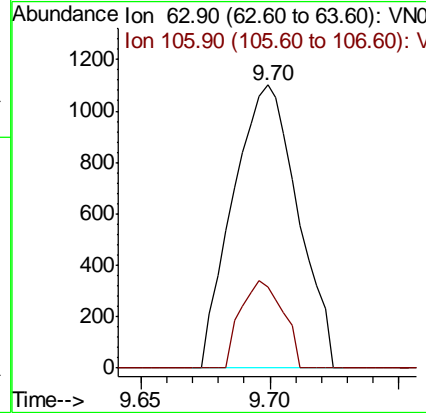
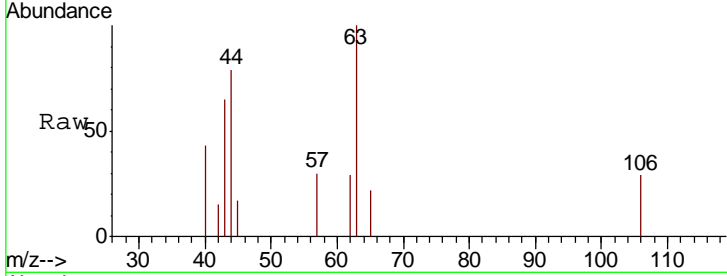




#58  
 2-Chloroethyl Vinyl ether  
 Concen: 0.738 ug/l  
 RT: 9.70 min Scan# 2465  
 Delta R.T. 0.01 min  
 Lab File: VN056705.D  
 Acq: 15 Jul 2019 12:33

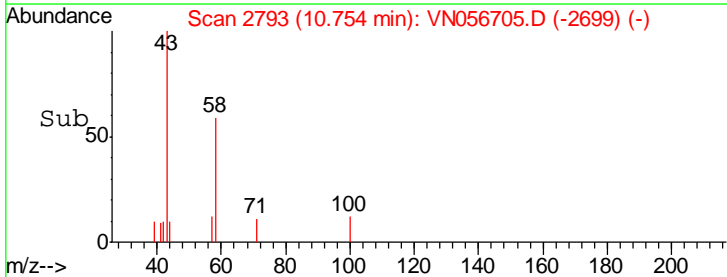
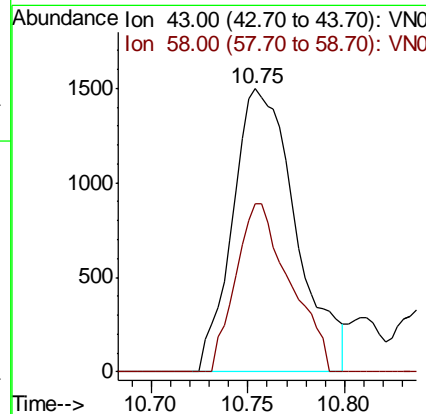
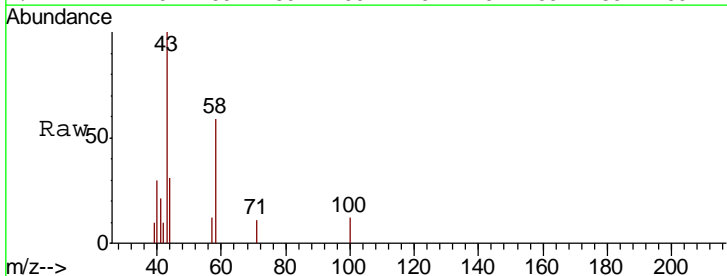
Instrument : MSVOA\_N  
 ClientSampled : LOD-MDL-WATER-01-QT3-2019

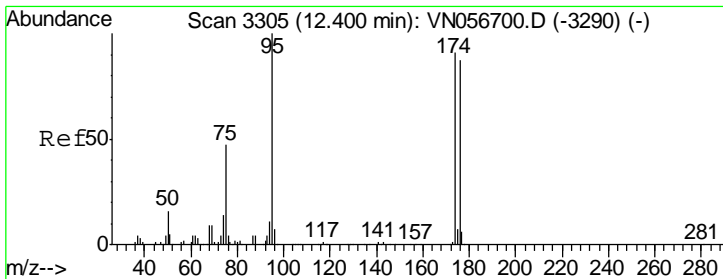
Tgt Ion: 63 Resp: 1927  
 Ion Ratio Lower Upper  
 63 100  
 106 20.3 21.2 31.8#



#59  
 2-Hexanone  
 Concen: 0.958 ug/l  
 RT: 10.75 min Scan# 2793  
 Delta R.T. 0.00 min  
 Lab File: VN056705.D  
 Acq: 15 Jul 2019 12:33

Tgt Ion: 43 Resp: 3408  
 Ion Ratio Lower Upper  
 43 100  
 58 50.8 27.9 83.6

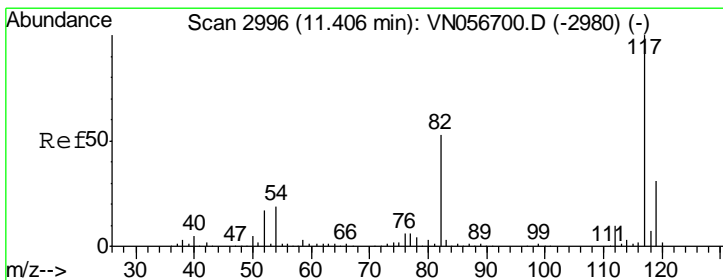
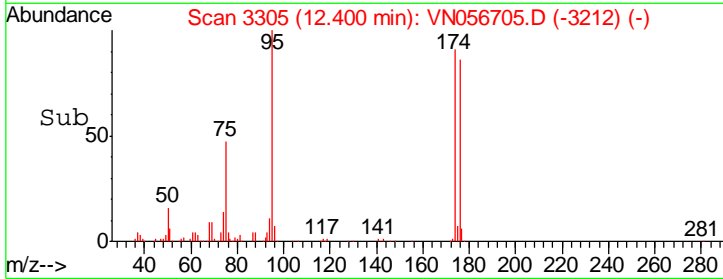
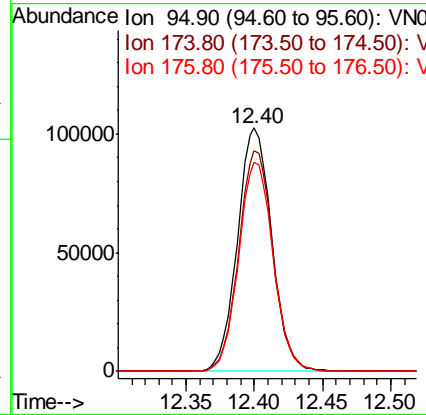
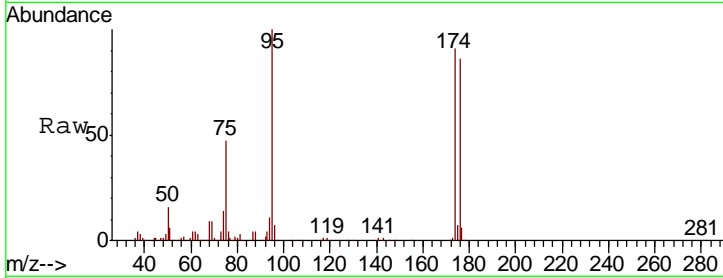




#62  
 4-Bromofluorobenzene  
 Concen: 41.279 ug/l  
 RT: 12.40 min Scan# 3305  
 Delta R.T. -0.00 min  
 Lab File: VN056705.D  
 Acq: 15 Jul 2019 12:33

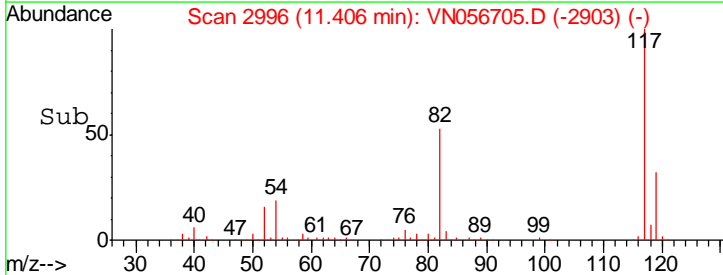
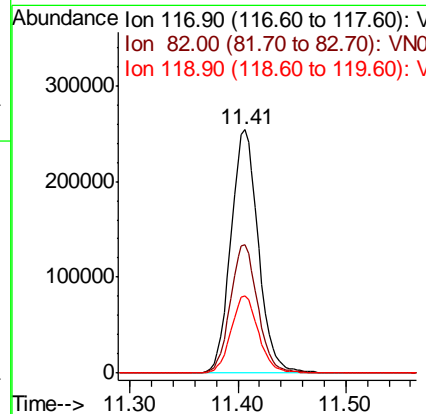
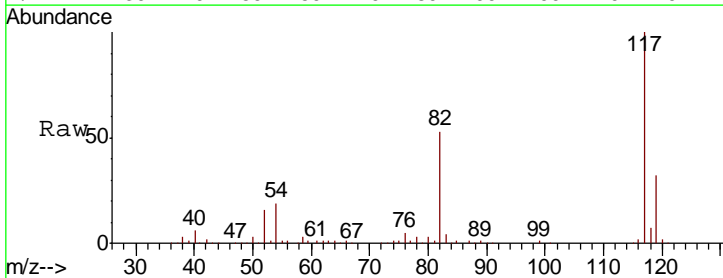
Instrument : MSVOA\_N  
 ClientSampled : LOD-MDL-WATER-01-QT3-2019

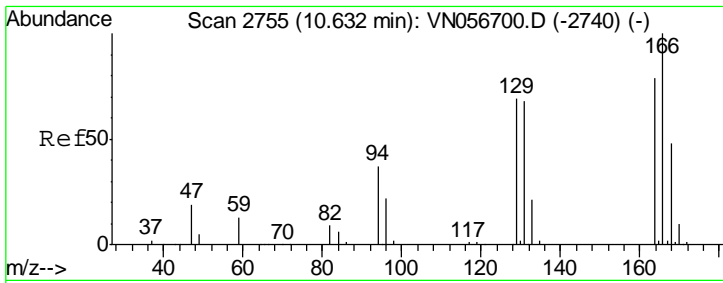
Tgt Ion	Resp	Lower	Upper
95	178669		
174	91.2	0.0	180.0
176	86.6	0.0	173.2



#63  
 Chlorobenzene-d5  
 Concen: 50.000 ug/l  
 RT: 11.41 min Scan# 2996  
 Delta R.T. -0.00 min  
 Lab File: VN056705.D  
 Acq: 15 Jul 2019 12:33

Tgt Ion	Resp	Lower	Upper
117	451102		
82	52.7	42.2	63.2
119	32.0	25.2	37.8

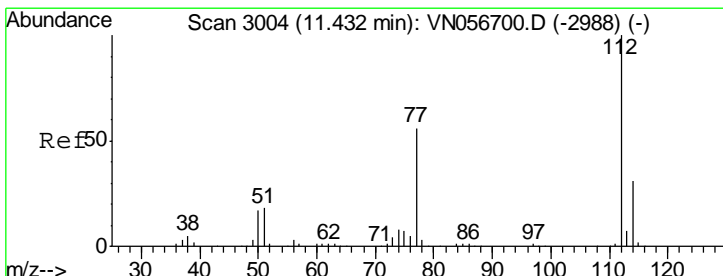
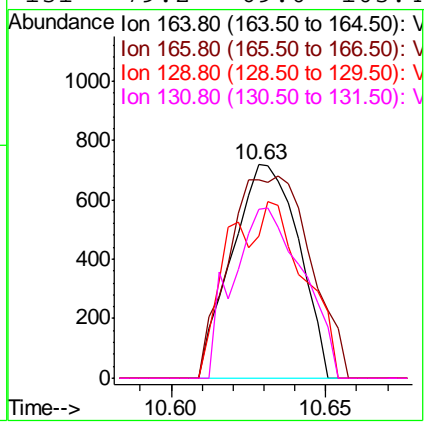
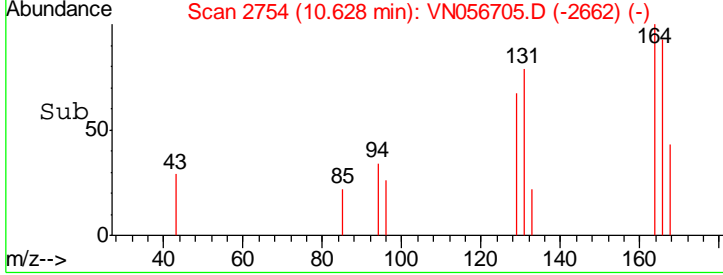
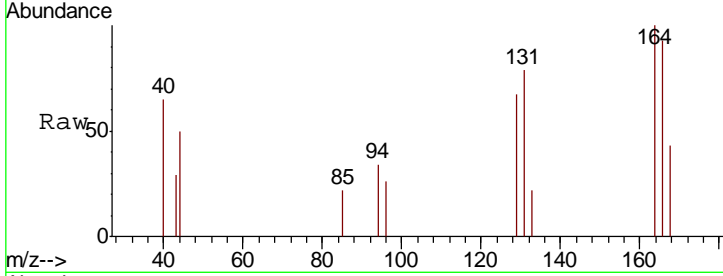




#64  
 Tetrachloroethene  
 Concen: 0.277 ug/l  
 RT: 10.63 min Scan# 2754  
 Delta R.T. -0.00 min  
 Lab File: VN056705.D  
 Acq: 15 Jul 2019 12:33

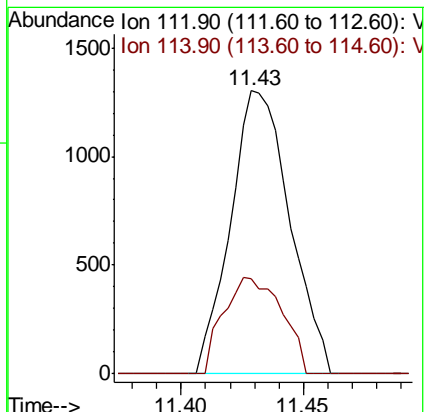
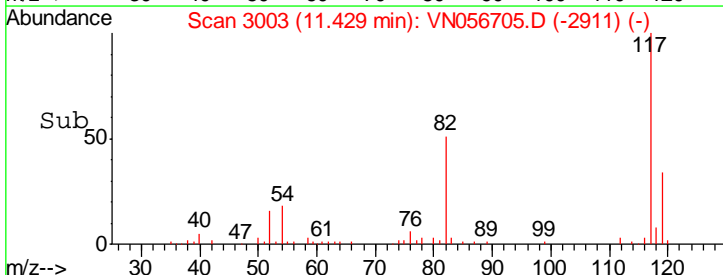
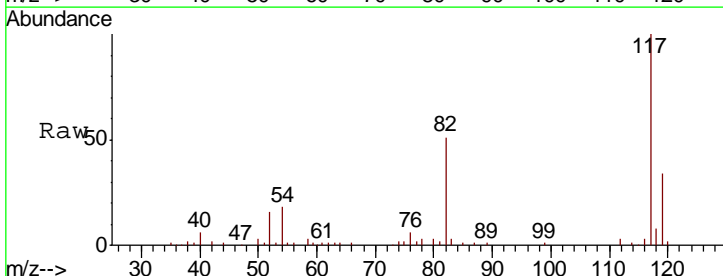
Instrument : MSVOA\_N  
 ClientSampled : LOD-MDL-WATER-01-QT3-2019

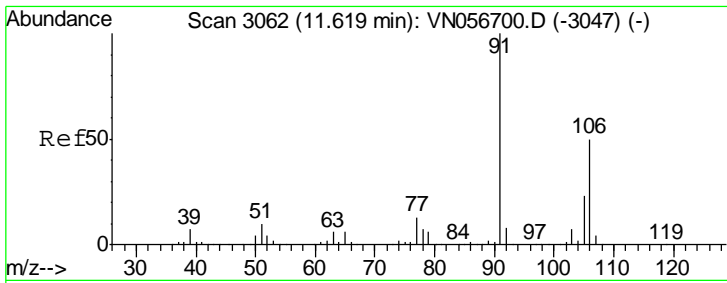
Tgt Ion	Resp	Lower	Upper
164	1077		
166	92.9	101.4	152.2#
129	66.6	69.6	104.4#
131	79.2	69.0	103.4



#65  
 Chlorobenzene  
 Concen: 0.238 ug/l  
 RT: 11.43 min Scan# 3003  
 Delta R.T. -0.00 min  
 Lab File: VN056705.D  
 Acq: 15 Jul 2019 12:33

Tgt Ion	Resp	Lower	Upper
112	2192		
114	33.6	25.2	37.8

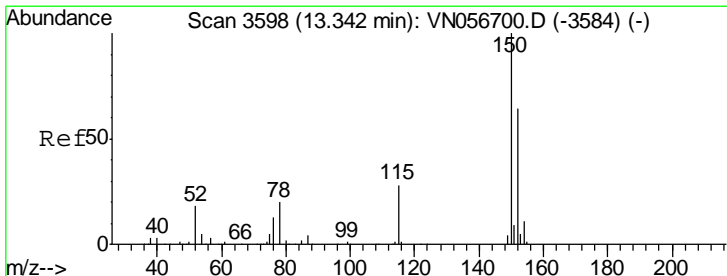
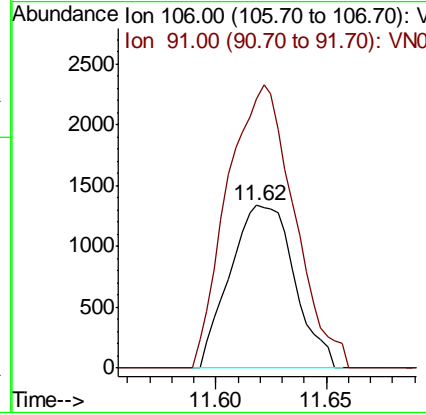
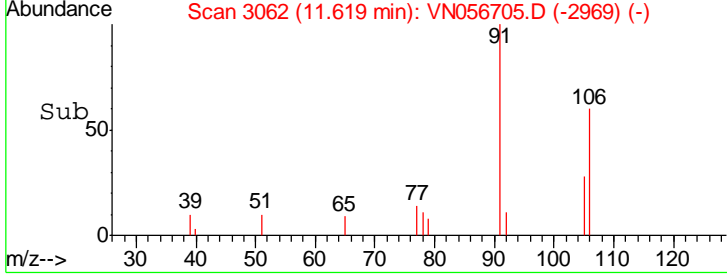
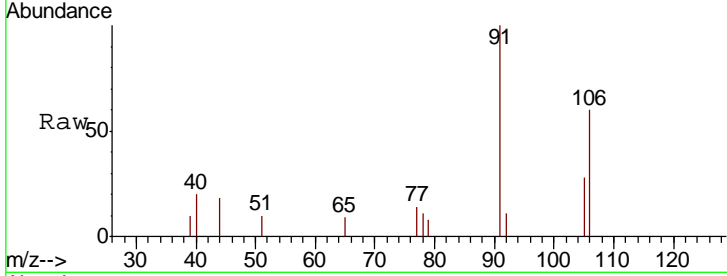




#68  
 m/p-Xylenes  
 Concen: 0.446 ug/l  
 RT: 11.62 min Scan# 3062  
 Delta R.T. -0.00 min  
 Lab File: VN056705.D  
 Acq: 15 Jul 2019 12:33

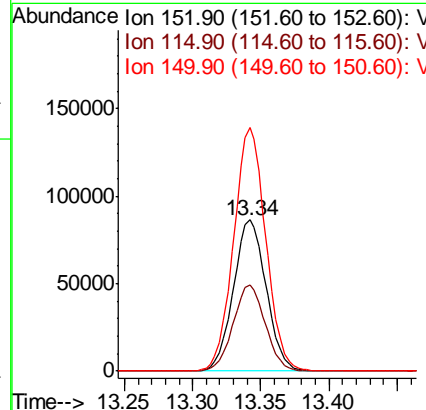
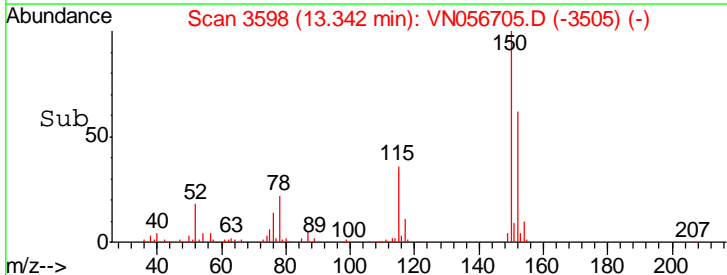
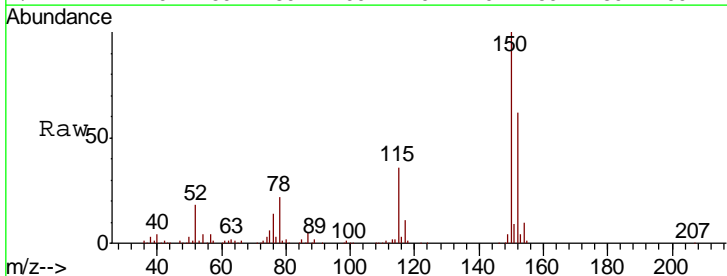
Instrument : MSVOA\_N  
 ClientSampled : LOD-MDL-WATER-01-QT3-2019

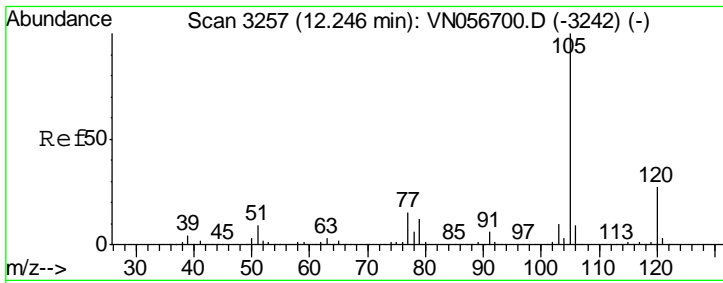
Tgt Ion:106 Resp: 2701  
 Ion Ratio Lower Upper  
 106 100  
 91 180.7 160.5 240.7



#72  
 1,4-Dichlorobenzene-d4  
 Concen: 50.000 ug/l  
 RT: 13.34 min Scan# 3598  
 Delta R.T. -0.00 min  
 Lab File: VN056705.D  
 Acq: 15 Jul 2019 12:33

Tgt Ion:152 Resp: 143833  
 Ion Ratio Lower Upper  
 152 100  
 115 55.8 28.2 84.7  
 150 158.3 0.0 345.8

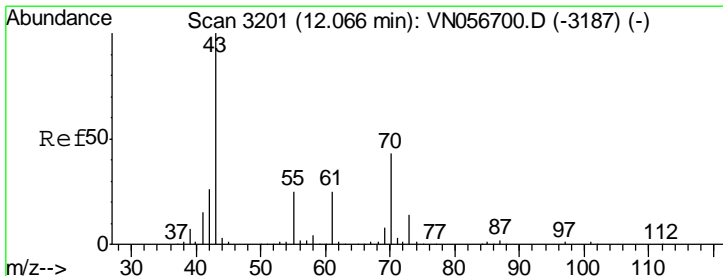
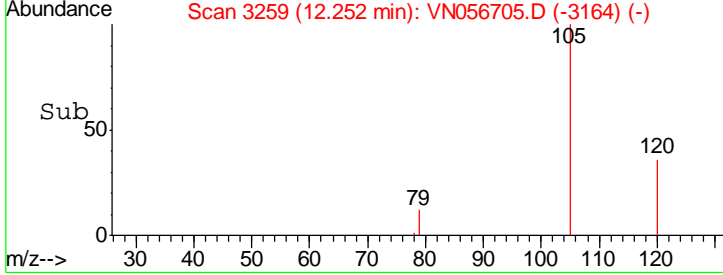
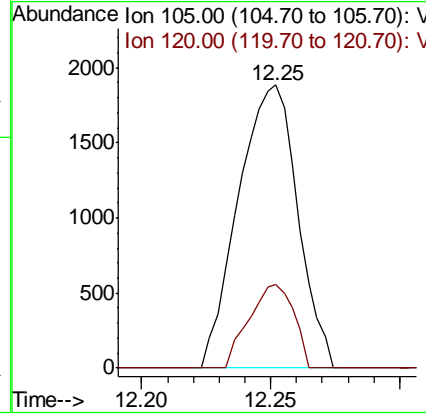
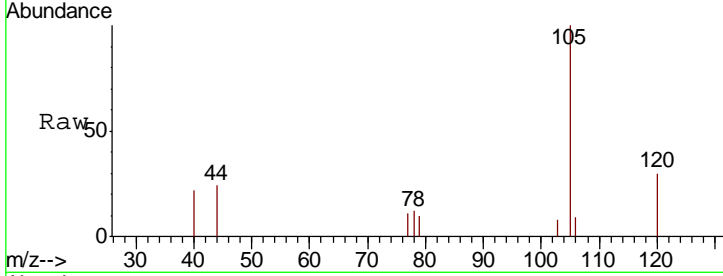




#73  
 Isopropylbenzene  
 Concen: 0.260 ug/l  
 RT: 12.25 min Scan# 3259  
 Delta R.T. 0.01 min  
 Lab File: VN056705.D  
 Acq: 15 Jul 2019 12:33

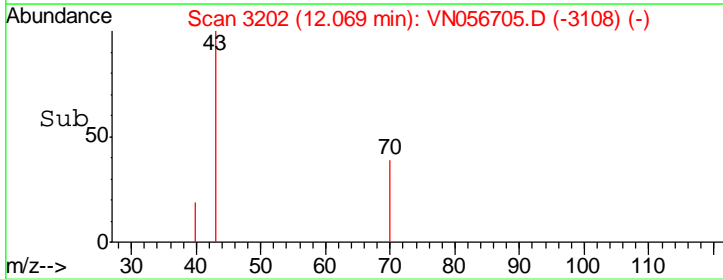
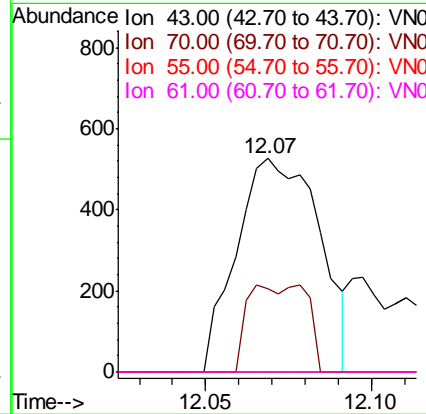
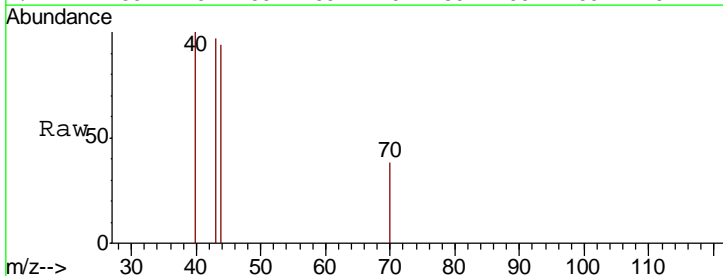
Instrument : MSVOA\_N  
 ClientSampled : LOD-MDL-WATER-01-QT3-2019

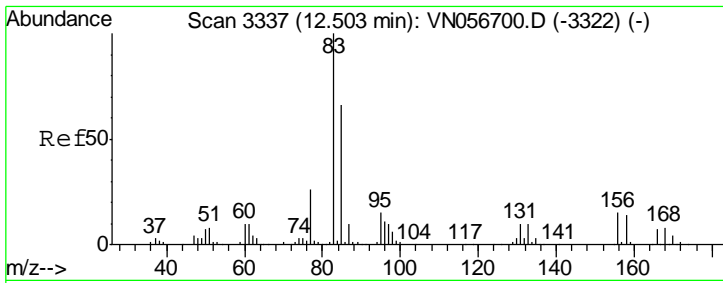
Tgt Ion	Resp	Lower	Upper
105	3019		
120	22.3	13.4	40.2



#74  
 N-amyl acetate  
 Concen: 0.213 ug/l  
 RT: 12.07 min Scan# 3202  
 Delta R.T. 0.00 min  
 Lab File: VN056705.D  
 Acq: 15 Jul 2019 12:33

Tgt Ion	Resp	Lower	Upper
43	919		
70	16.6	34.5	51.7#
55	0.0	20.2	30.2#
61	0.0	19.9	29.9#

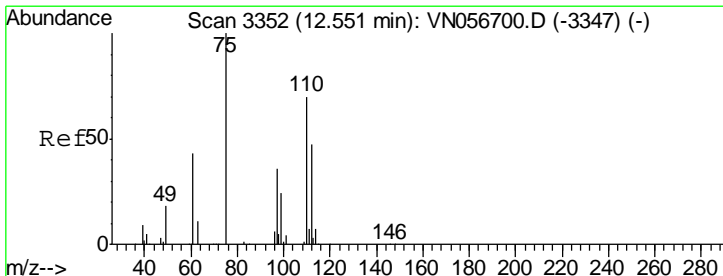
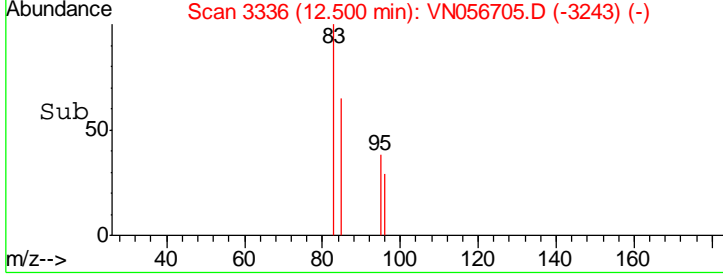
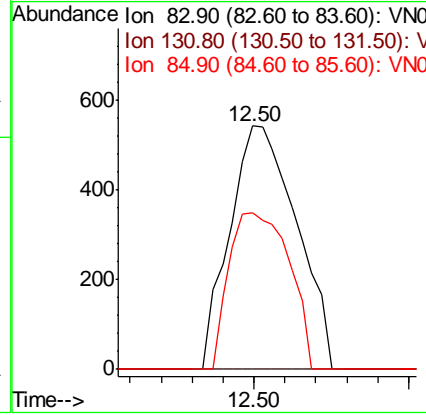
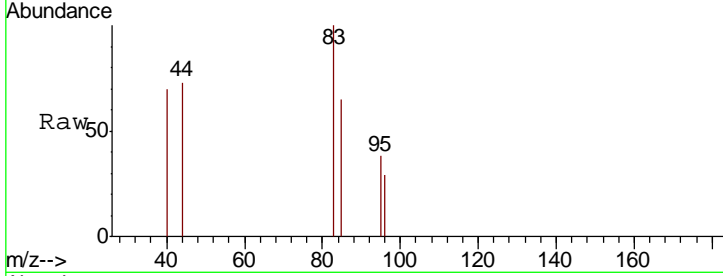




#75  
 1,1,2,2-Tetrachloroethane  
 Concen: Below Cal  
 RT: 12.50 min Scan# 3336  
 Delta R.T. -0.00 min  
 Lab File: VN056705.D  
 Acq: 15 Jul 2019 12:33

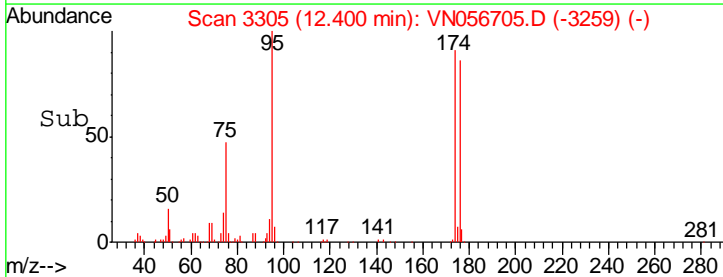
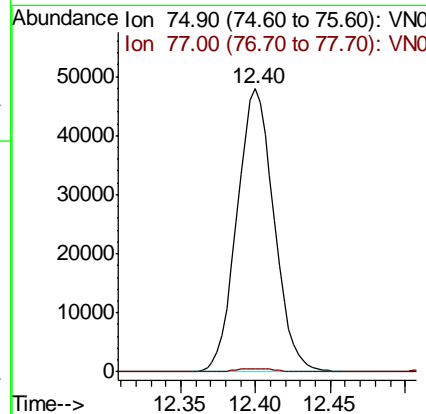
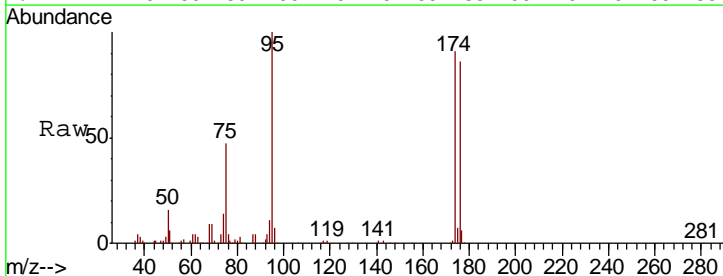
Instrument : MSVOA\_N  
 ClientSampled : LOD-MDL-WATER-01-QT3-2019

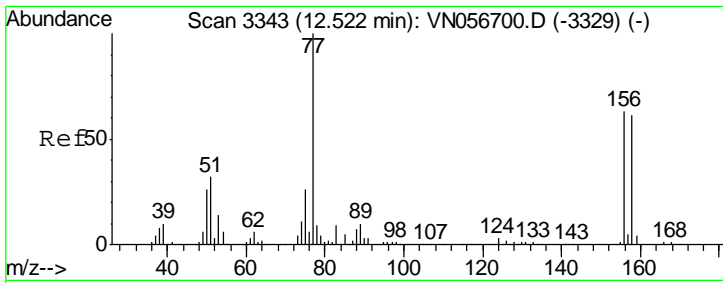
Tgt Ion	Resp	Lower	Upper
83	100		
131	0.0	5.3	15.8#
85	58.1	32.6	97.8



#76  
 1,2,3-Trichloropropane  
 Concen: 26.251 ug/l  
 RT: 12.40 min Scan# 3305  
 Delta R.T. -0.15 min  
 Lab File: VN056705.D  
 Acq: 15 Jul 2019 12:33

Tgt Ion	Resp	Lower	Upper
75	100		
77	1.1	0.0	0.0#

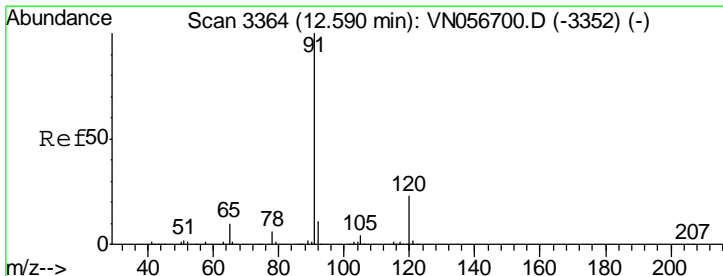
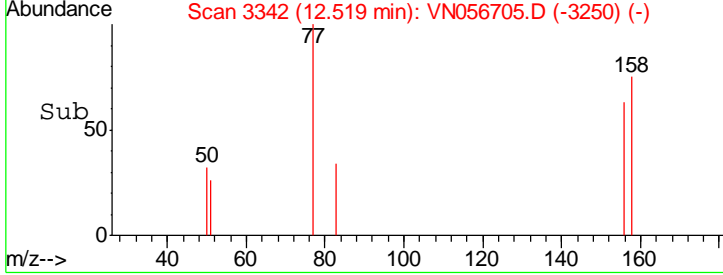
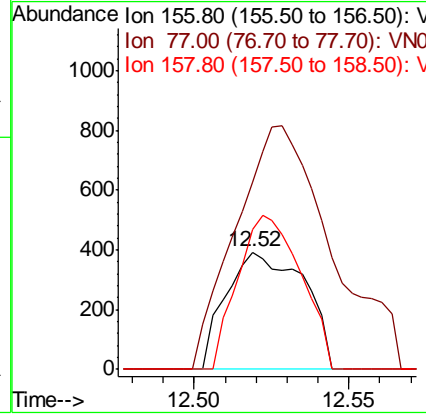
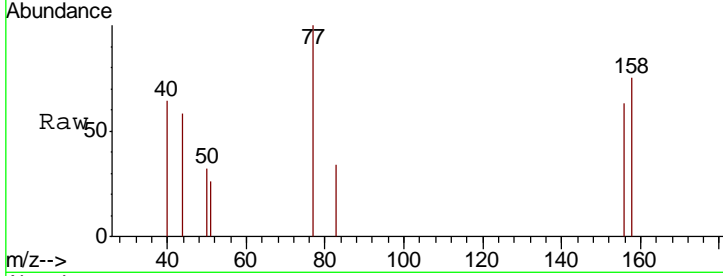




#77  
 Bromobenzene  
 Concen: 0.228 ug/l  
 RT: 12.52 min Scan# 3342  
 Delta R.T. -0.00 min  
 Lab File: VN056705.D  
 Acq: 15 Jul 2019 12:33

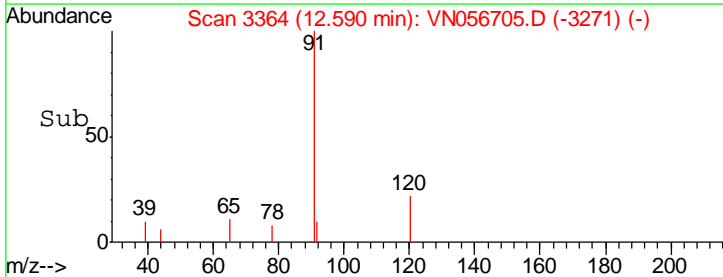
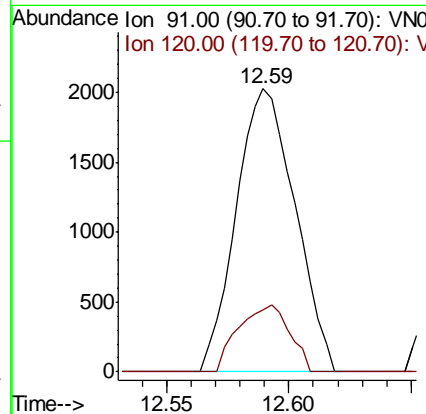
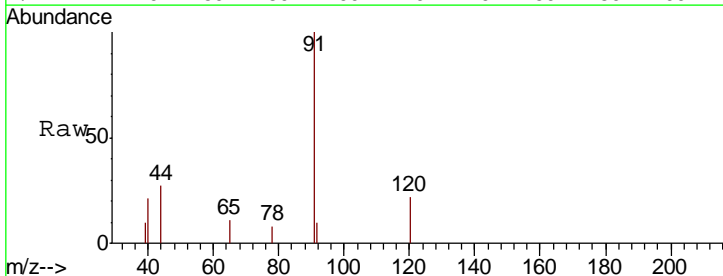
Instrument : MSVOA\_N  
 ClientSampled : LOD-MDL-WATER-01-QT3-2019

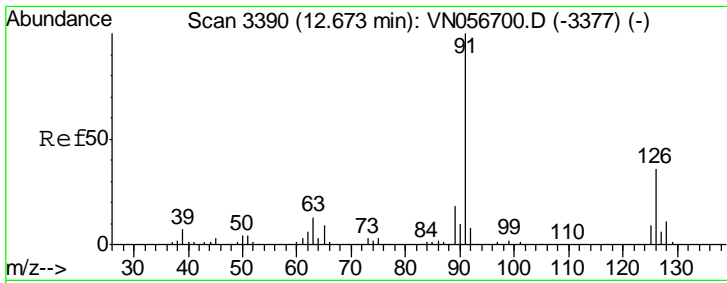
Tgt Ion	Resp	Lower	Upper
156	100		
77	253.5	97.2	291.6
158	106.4	48.9	146.8



#78  
 n-propylbenzene  
 Concen: 0.263 ug/l  
 RT: 12.59 min Scan# 3364  
 Delta R.T. -0.00 min  
 Lab File: VN056705.D  
 Acq: 15 Jul 2019 12:33

Tgt Ion	Resp	Lower	Upper
91	100		
120	20.5	11.8	35.3

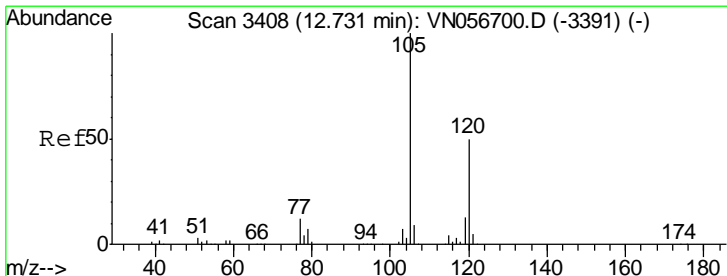
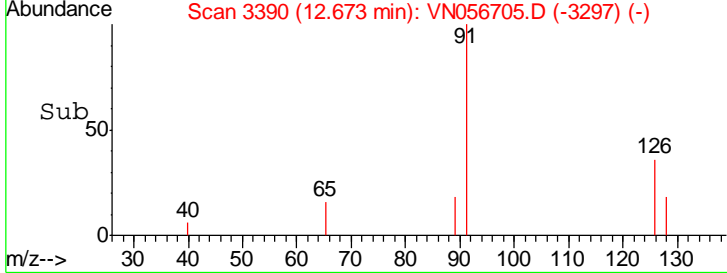
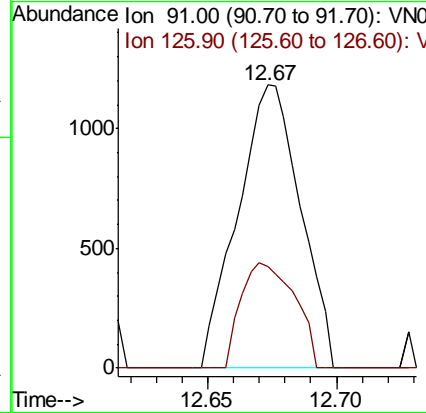
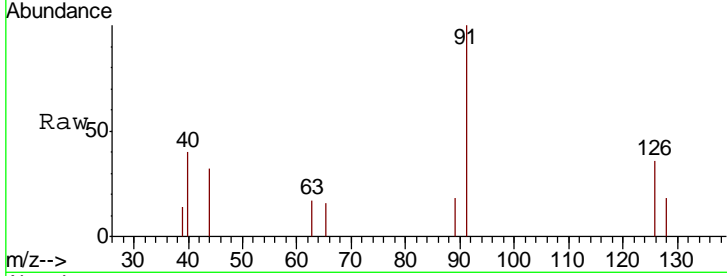




#79  
 2-Chlorotoluene  
 Concen: Below Cal  
 RT: 12.67 min Scan# 3390  
 Delta R.T. 0.00 min  
 Lab File: VN056705.D  
 Acq: 15 Jul 2019 12:33

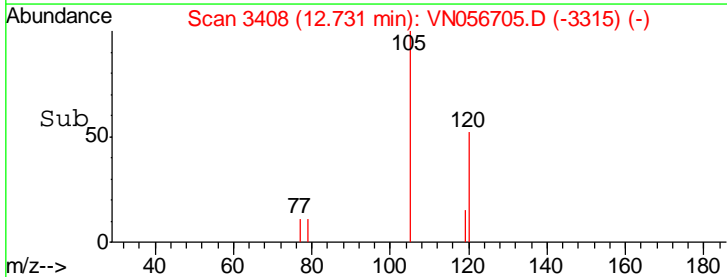
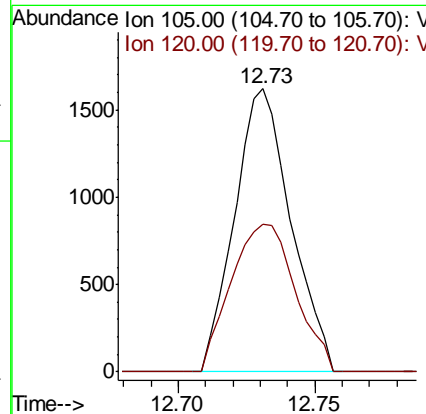
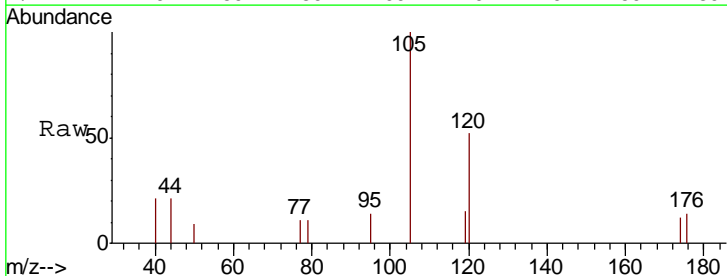
Instrument : MSVOA\_N  
 ClientSampled : LOD-MDL-WATER-01-QT3-2019

Tgt Ion	Resp	Lower	Upper
91	2006		
126	32.0	17.9	53.7

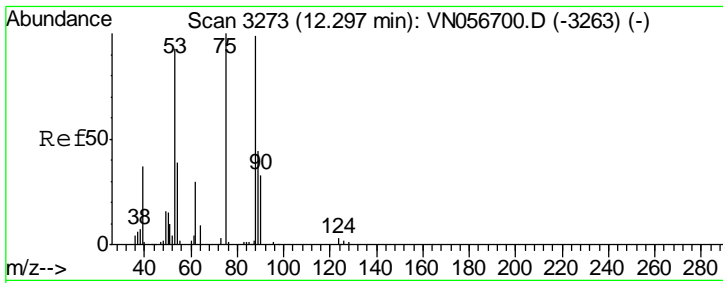


#80  
 1,3,5-Trimethylbenzene  
 Concen: 0.236 ug/l  
 RT: 12.73 min Scan# 3408  
 Delta R.T. -0.00 min  
 Lab File: VN056705.D  
 Acq: 15 Jul 2019 12:33

Tgt Ion	Resp	Lower	Upper
105	2322		
120	59.6	24.8	74.3



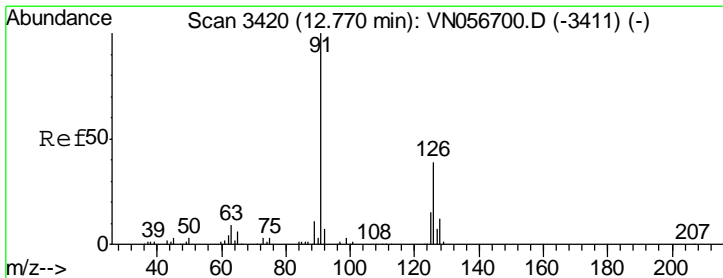
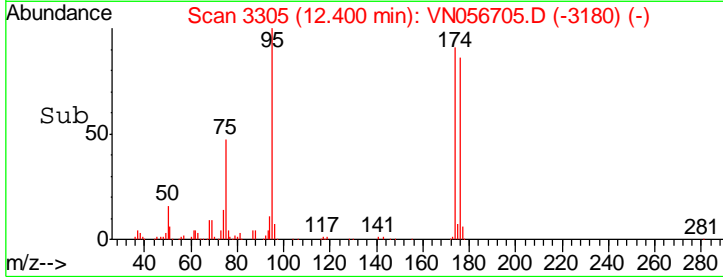
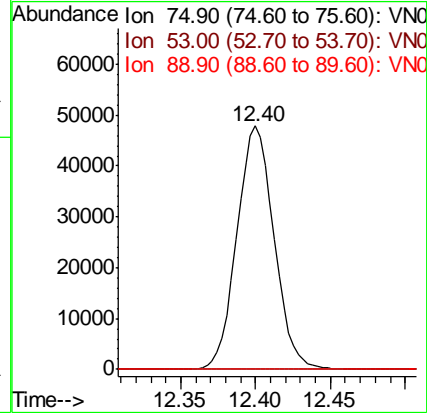
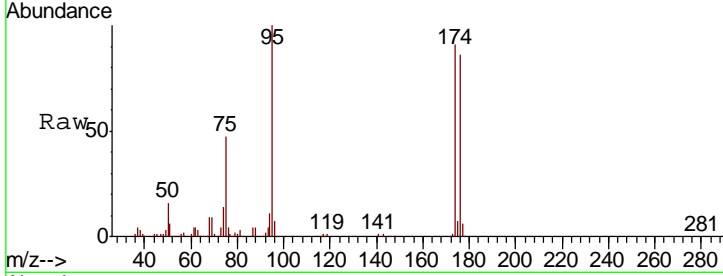




#81  
 trans-1,4-Dichloro-2-butene  
 Concen: 81.072 ug/l  
 RT: 12.40 min Scan# 3305  
 Delta R.T. 0.10 min  
 Lab File: VN056705.D  
 Acq: 15 Jul 2019 12:33

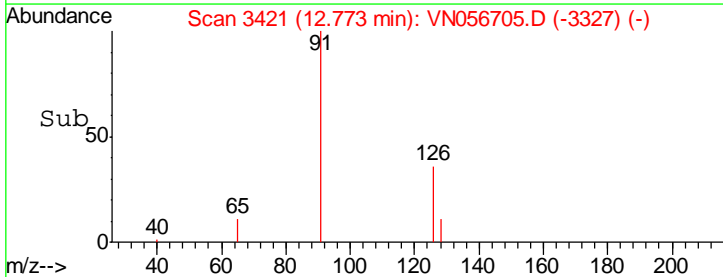
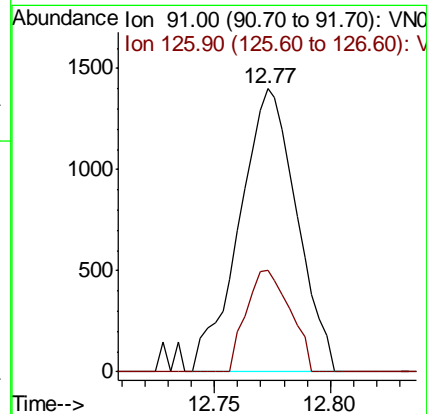
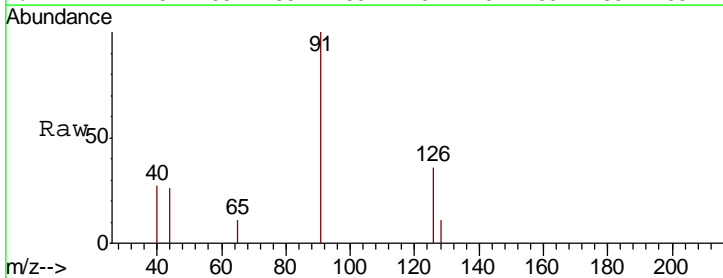
Instrument : MSVOA\_N  
 ClientSampled : LOD-MDL-WATER-01-QT3-2019

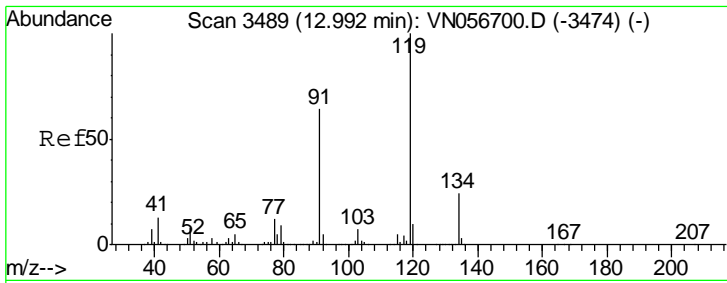
Tgt Ion	Resp	Lower	Upper
75	100		
53	0.0	73.7	110.5#
89	0.0	36.2	54.2#



#82  
 4-Chlorotoluene  
 Concen: 0.318 ug/l  
 RT: 12.77 min Scan# 3421  
 Delta R.T. 0.00 min  
 Lab File: VN056705.D  
 Acq: 15 Jul 2019 12:33

Tgt Ion	Resp	Lower	Upper
91	100		
126	27.4	17.6	52.8

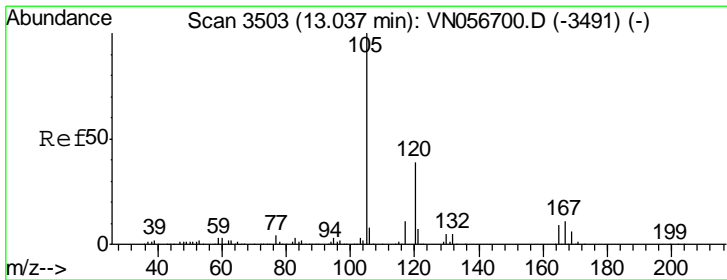
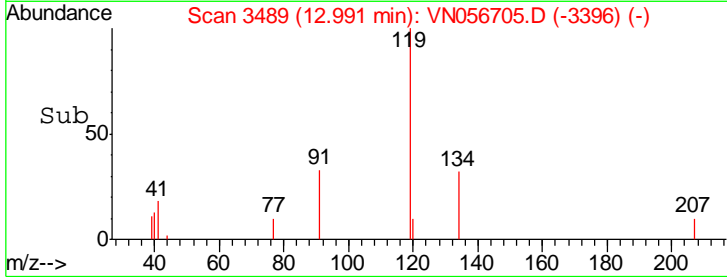
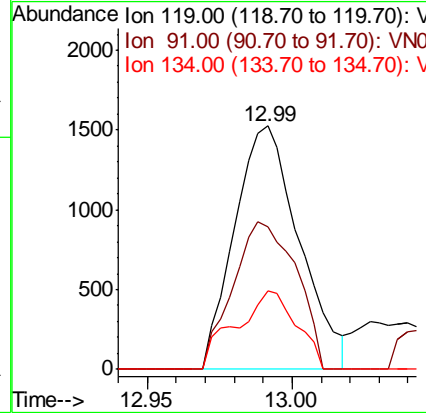
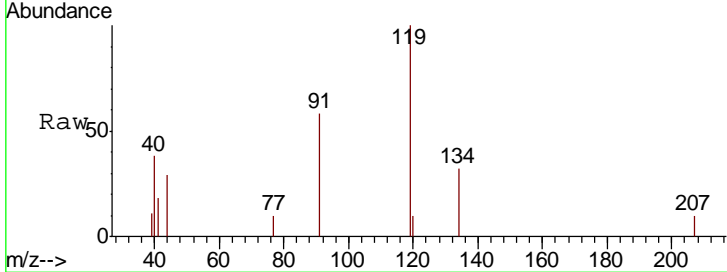




#83  
 tert-Butylbenzene  
 Concen: Below Cal  
 RT: 12.99 min Scan# 3489  
 Delta R.T. 0.00 min  
 Lab File: VN056705.D  
 Acq: 15 Jul 2019 12:33

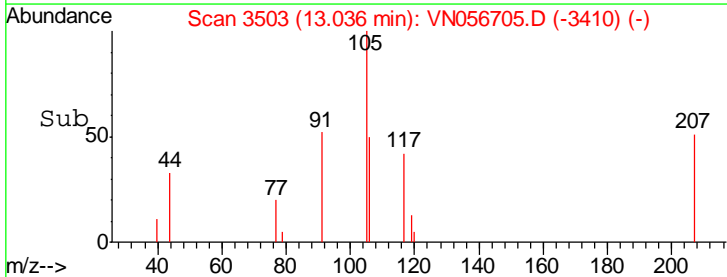
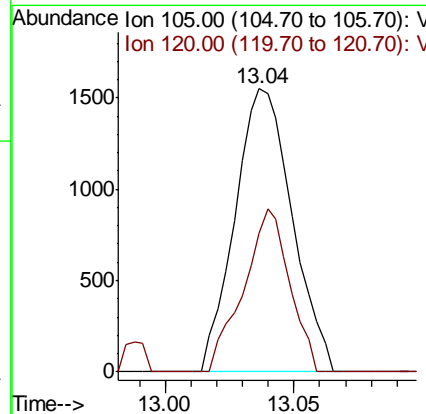
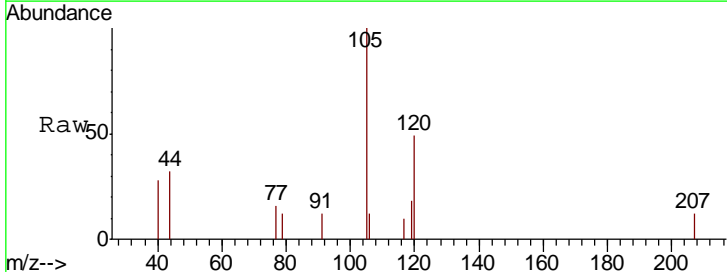
Instrument : MSVOA\_N  
 ClientSampled : LOD-MDL-WATER-01-QT3-2019

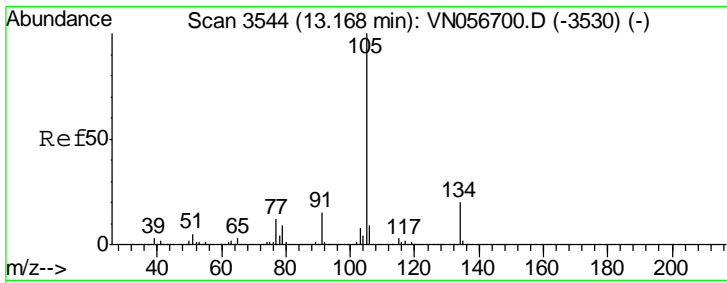
Tgt Ion	Resp	Lower	Upper
119	100		
91	59.5	31.8	95.4
134	30.4	13.0	38.9



#84  
 1,2,4-Trimethylbenzene  
 Concen: 0.250 ug/l  
 RT: 13.04 min Scan# 3503  
 Delta R.T. -0.00 min  
 Lab File: VN056705.D  
 Acq: 15 Jul 2019 12:33

Tgt Ion	Resp	Lower	Upper
105	100		
120	46.4	22.9	68.8

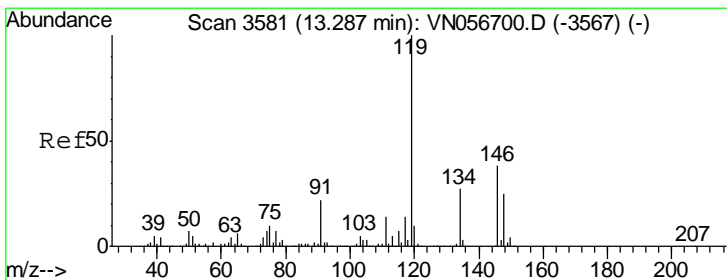
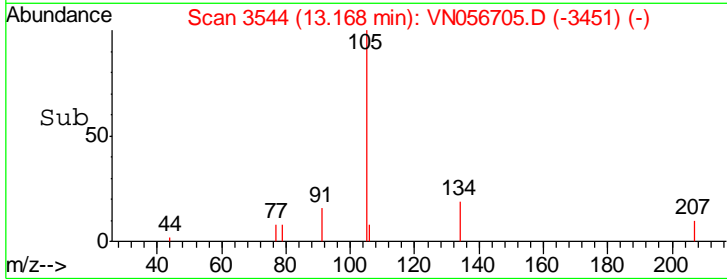
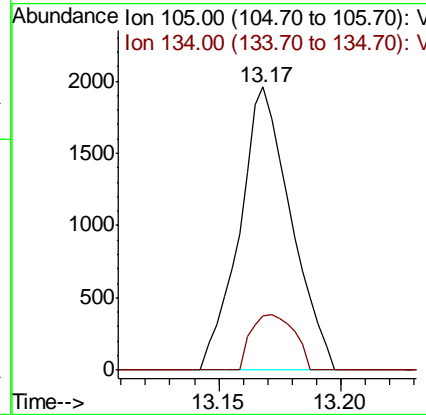
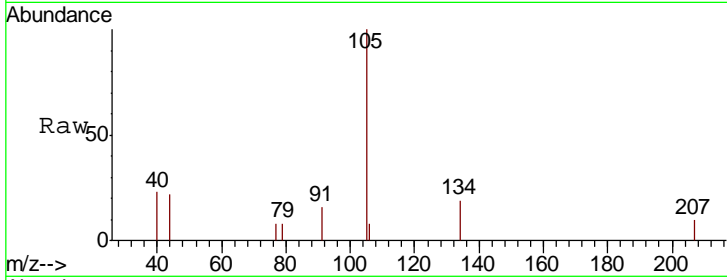




#85  
 sec-Butylbenzene  
 Concen: 0.261 ug/l  
 RT: 13.17 min Scan# 3544  
 Delta R.T. -0.00 min  
 Lab File: VN056705.D  
 Acq: 15 Jul 2019 12:33

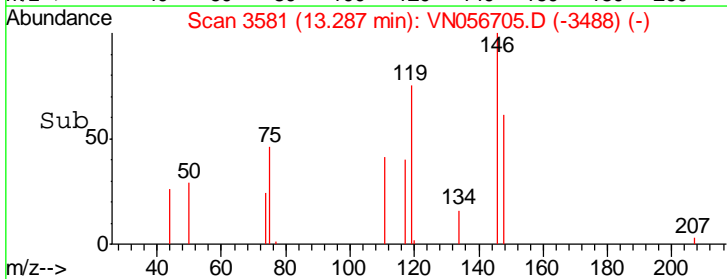
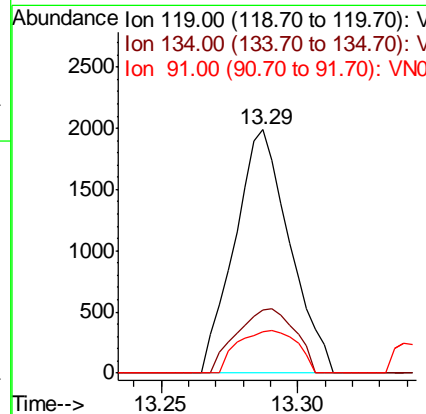
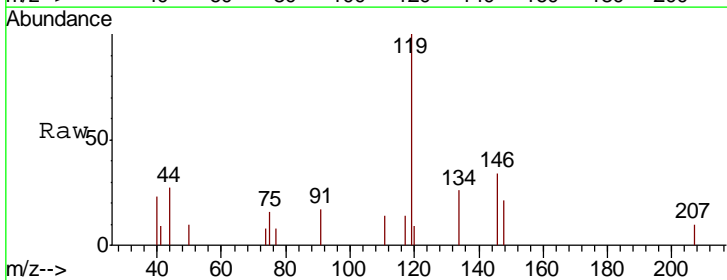
Instrument :  
 MSVOA\_N  
 ClientSampled :  
 LOD-MDL-WATER-01-QT3-2019

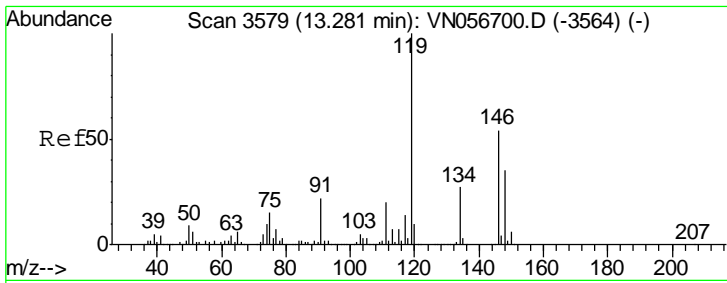
Tgt Ion	Resp	Lower	Upper
105	100		
134	16.5	10.1	30.1



#86  
 p-Isopropyltoluene  
 Concen: 0.280 ug/l  
 RT: 13.29 min Scan# 3581  
 Delta R.T. -0.00 min  
 Lab File: VN056705.D  
 Acq: 15 Jul 2019 12:33

Tgt Ion	Resp	Lower	Upper
119	100		
134	28.1	13.6	40.7
91	19.0	11.2	33.5

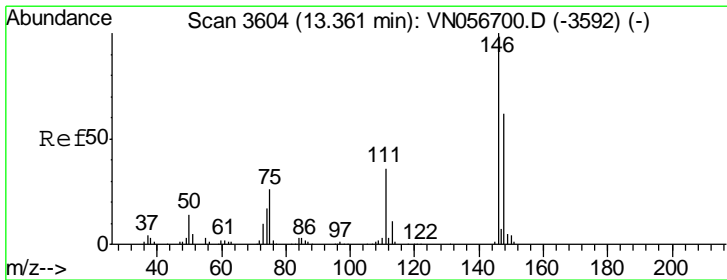
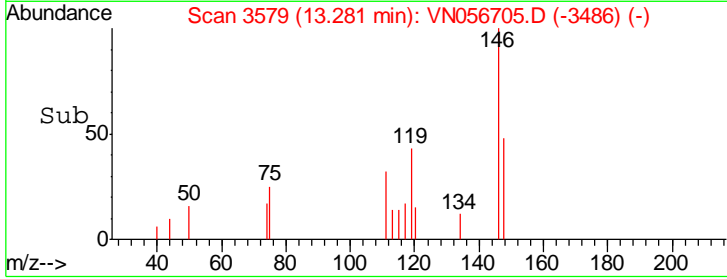
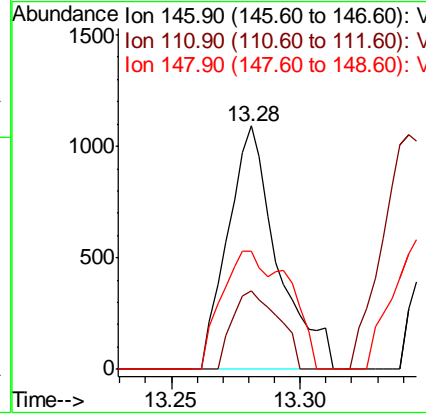
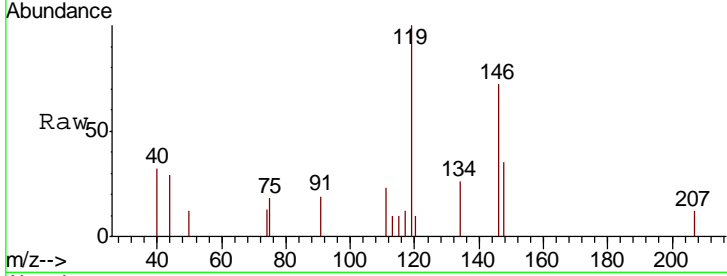




#87  
 1,3-Dichlorobenzene  
 Concen: 0.294 ug/l  
 RT: 13.28 min Scan# 3579  
 Delta R.T. -0.00 min  
 Lab File: VN056705.D  
 Acq: 15 Jul 2019 12:33

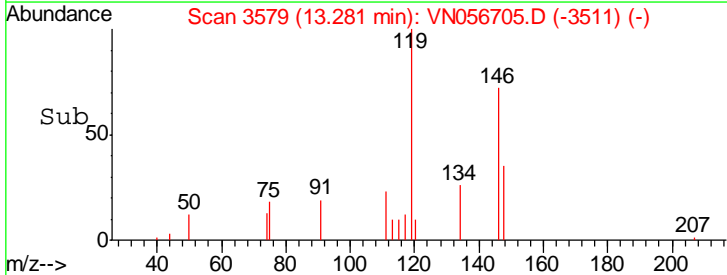
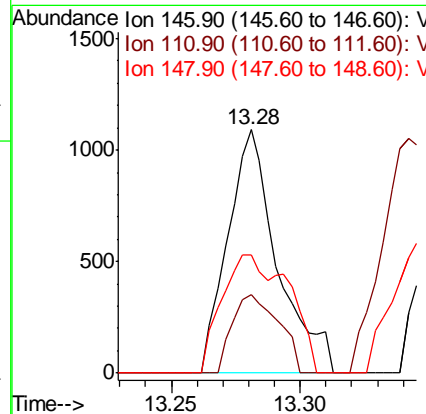
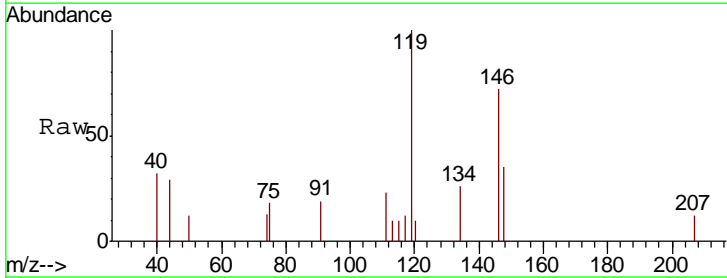
Instrument : MSVOA\_N  
 ClientSampled : LOD-MDL-WATER-01-QT3-2019

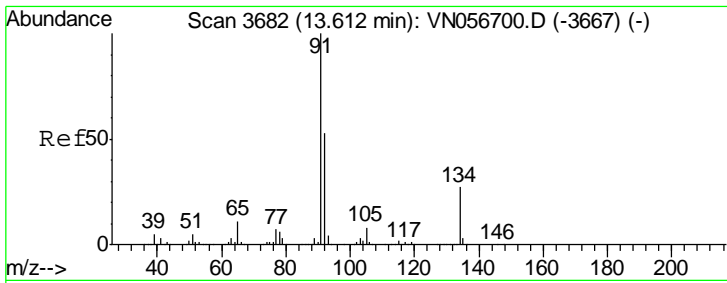
Tgt Ion	Resp	Lower	Upper
146	1462		
146	100		
111	30.2	18.8	56.3
148	65.4	32.3	96.8



#88  
 1,4-Dichlorobenzene  
 Concen: 0.302 ug/l  
 RT: 13.28 min Scan# 3579  
 Delta R.T. -0.08 min  
 Lab File: VN056705.D  
 Acq: 15 Jul 2019 12:33

Tgt Ion	Resp	Lower	Upper
146	1462		
146	100		
111	30.2	18.6	55.8
148	65.4	31.9	95.7

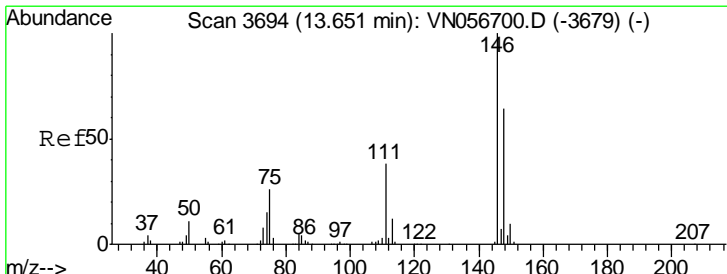
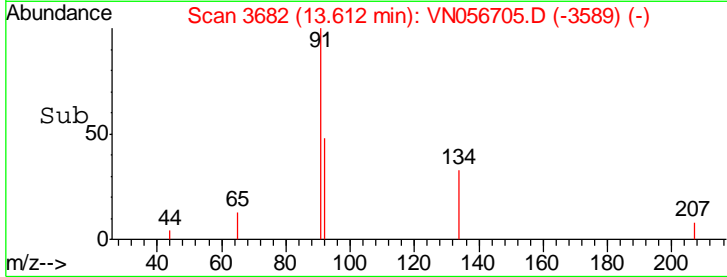
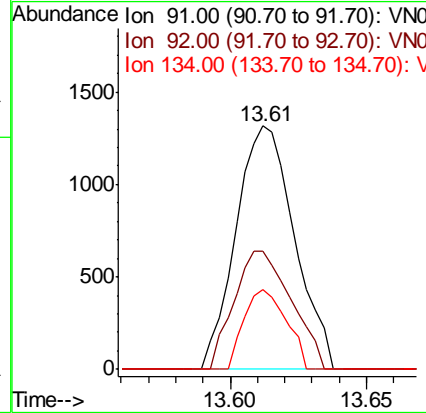
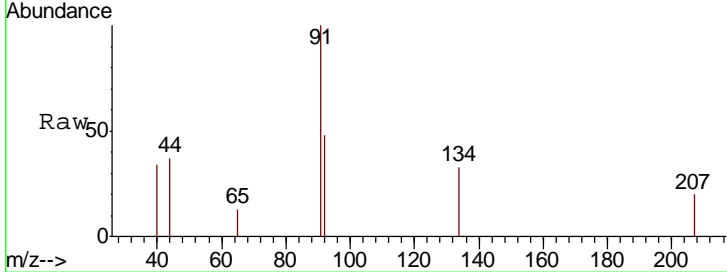




#89  
 n-Butylbenzene  
 Concen: 0.246 ug/l  
 RT: 13.61 min Scan# 3682  
 Delta R.T. -0.00 min  
 Lab File: VN056705.D  
 Acq: 15 Jul 2019 12:33

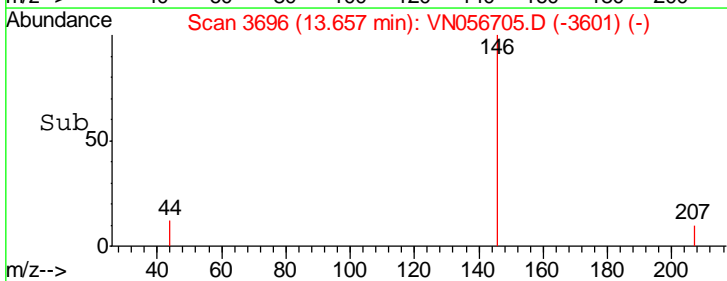
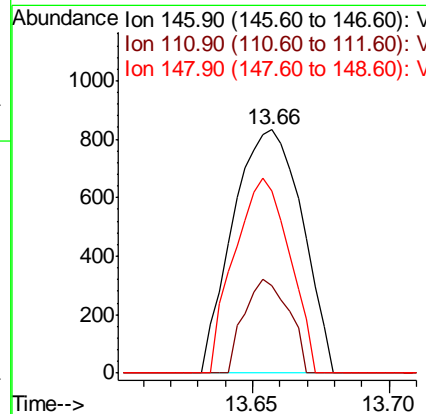
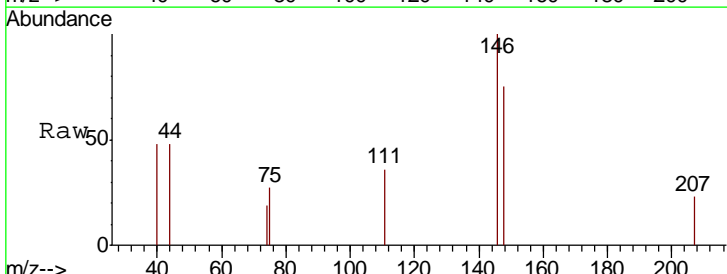
Instrument : MSVOA\_N  
 ClientSampled : LOD-MDL-WATER-01-QT3-2019

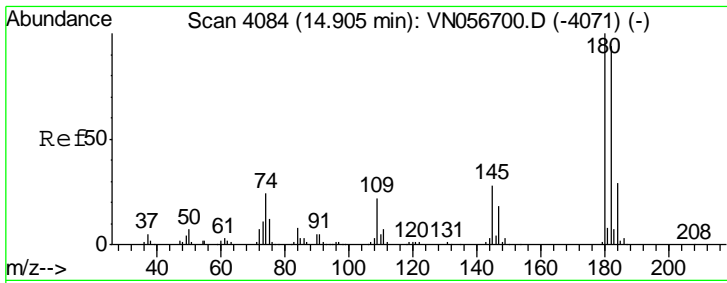
Tgt Ion	Resp	Lower	Upper
91	1957		
92	47.6	26.0	78.0
134	23.6	13.4	40.2



#91  
 1,2-Dichlorobenzene  
 Concen: 0.288 ug/l  
 RT: 13.66 min Scan# 3696  
 Delta R.T. 0.01 min  
 Lab File: VN056705.D  
 Acq: 15 Jul 2019 12:33

Tgt Ion	Resp	Lower	Upper
146	1465		
111	24.8	19.1	57.1
148	63.9	31.7	95.1

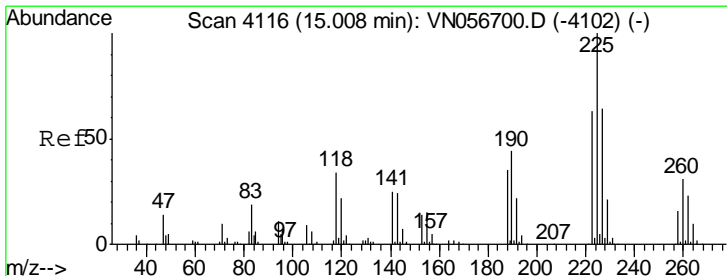
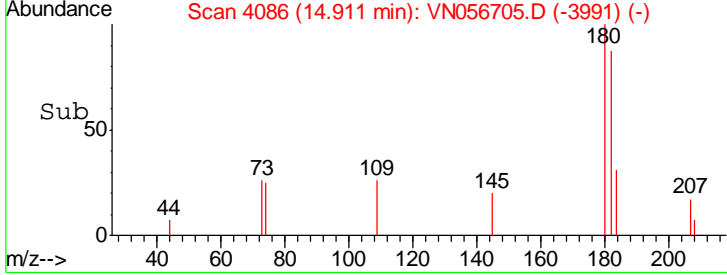
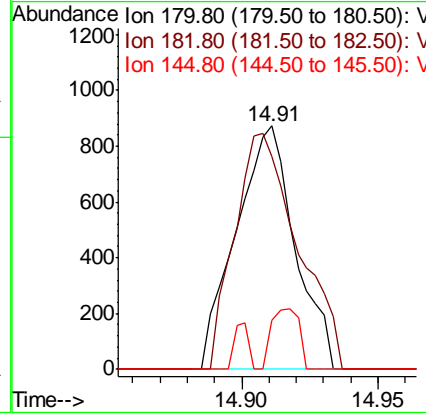
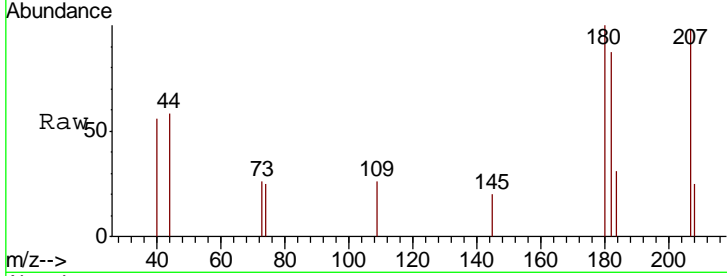




#93  
 1,2,4-Trichlorobenzene  
 Concen: 4.122 ug/l  
 RT: 14.91 min Scan# 4086  
 Delta R.T. 0.01 min  
 Lab File: VN056705.D  
 Acq: 15 Jul 2019 12:33

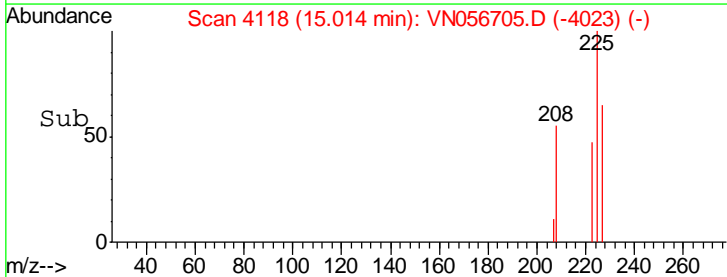
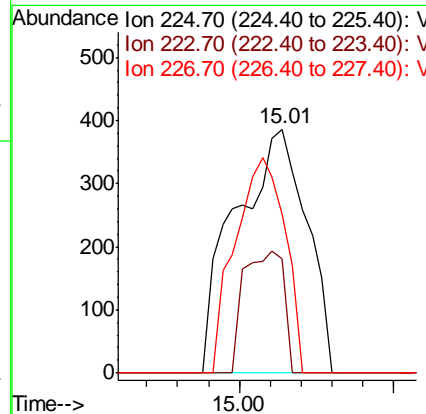
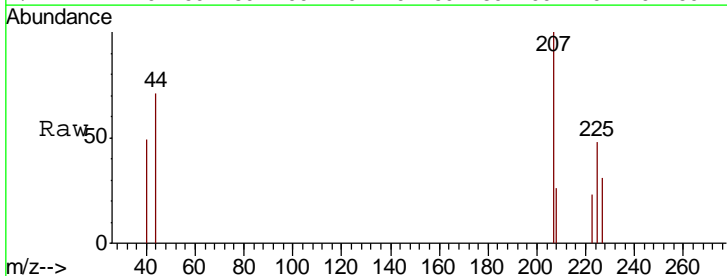
Instrument : MSVOA\_N  
 ClientSampled : LOD-MDL-WATER-01-QT3-2019

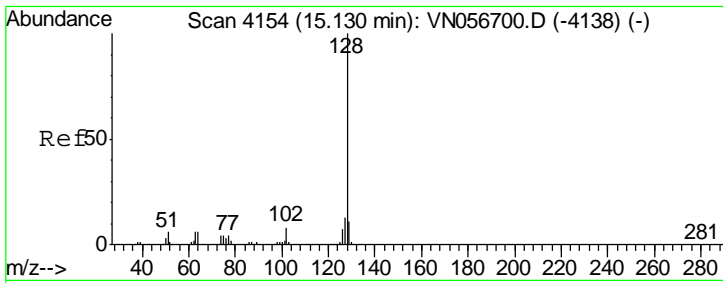
Tgt Ion	Resp	Lower	Upper
180	1306		
180	100		
182	104.2	47.2	141.6
145	11.6	14.2	42.8#



#94  
 Hexachlorobutadiene  
 Concen: Below Cal  
 RT: 15.01 min Scan# 4118  
 Delta R.T. 0.01 min  
 Lab File: VN056705.D  
 Acq: 15 Jul 2019 12:33

Tgt Ion	Resp	Lower	Upper
225	616		
225	100		
223	27.9	31.5	94.5#
227	61.9	32.0	96.2

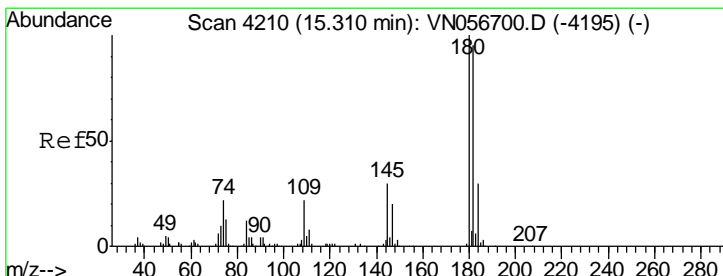
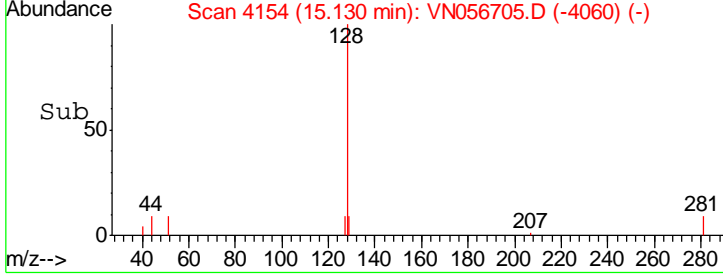
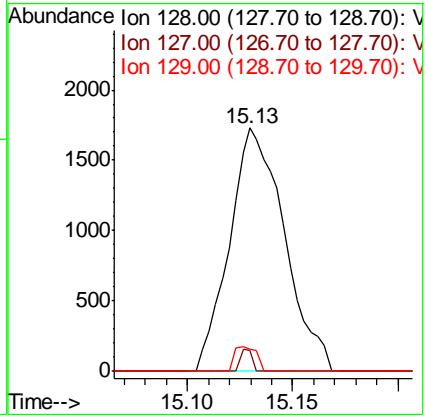
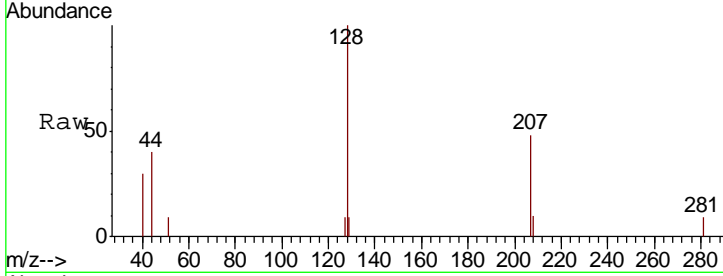




#95  
 Naphthalene  
 Concen: 4.895 ug/l  
 RT: 15.13 min Scan# 4154  
 Delta R.T. 0.00 min  
 Lab File: VN056705.D  
 Acq: 15 Jul 2019 12:33

**Instrument :**  
 MSVOA\_N  
**ClientSampled :**  
 LOD-MDL-WATER-01-QT3-2019

Tgt Ion	Resp	Lower	Upper
128	3126		
127	1.9	10.3	15.5#
129	4.0	8.7	13.1#



#96  
 1,2,3-Trichlorobenzene  
 Concen: 3.846 ug/l  
 RT: 15.32 min Scan# 4213  
 Delta R.T. 0.01 min  
 Lab File: VN056705.D  
 Acq: 15 Jul 2019 12:33

Tgt Ion	Resp	Lower	Upper
180	1563		
182	100.0	47.1	141.3
145	36.1	15.0	45.1

