

Data Path : Z:\VOASRV\HPCHEM1\MSVOA N\DATA\VN071519\  
 Data File : VN056745.D  
 Acq On : 16 Jul 2019 4:50  
 Operator : JC/SP  
 Sample : K3620-02  
 Misc : 5.00mL/MSVOA N/WATER  
 ALS Vial : 53 Sample Multiplier: 1

Instrument :  
 MSVOA\_N  
 ClientSampleId :  
 CL-01-071219-A

Quant Time: Jul 16 06:39:08 2019  
 Quant Method : Z:\VOASRV\HPCHEM1\MSVOA\_N\METHODS\82N071519W.M  
 Quant Title : SW846 8260  
 QLast Update : Tue Jul 16 01:25:25 2019  
 Response via : Initial Calibration

Internal Standards	R.T.	QIon	Response	Conc	Units	Dev(Min)
1) Pentafluorobenzene	7.67	168	260460	50.00	ug/l	0.00
34) 1,4-Difluorobenzene	8.59	114	472753	50.00	ug/l	0.00
63) Chlorobenzene-d5	11.41	117	504608	50.00	ug/l	0.00
72) 1,4-Dichlorobenzene-d4	13.34	152	215174	50.00	ug/l	0.00

System Monitoring Compounds

33) 1,2-Dichloroethane-d4	8.03	65	156270	54.24	ug/l	0.00
Spiked Amount						
						Recovery = 108.48%
35) Dibromofluoromethane	7.59	113	141471	48.09	ug/l	0.00
Spiked Amount						
						Recovery = 96.18%
50) Toluene-d8	10.09	98	599485	52.76	ug/l	0.00
Spiked Amount						
						Recovery = 105.52%
62) 4-Bromofluorobenzene	12.40	95	229570	59.91	ug/l	0.00
Spiked Amount						
						Recovery = 119.82%

Target Compounds

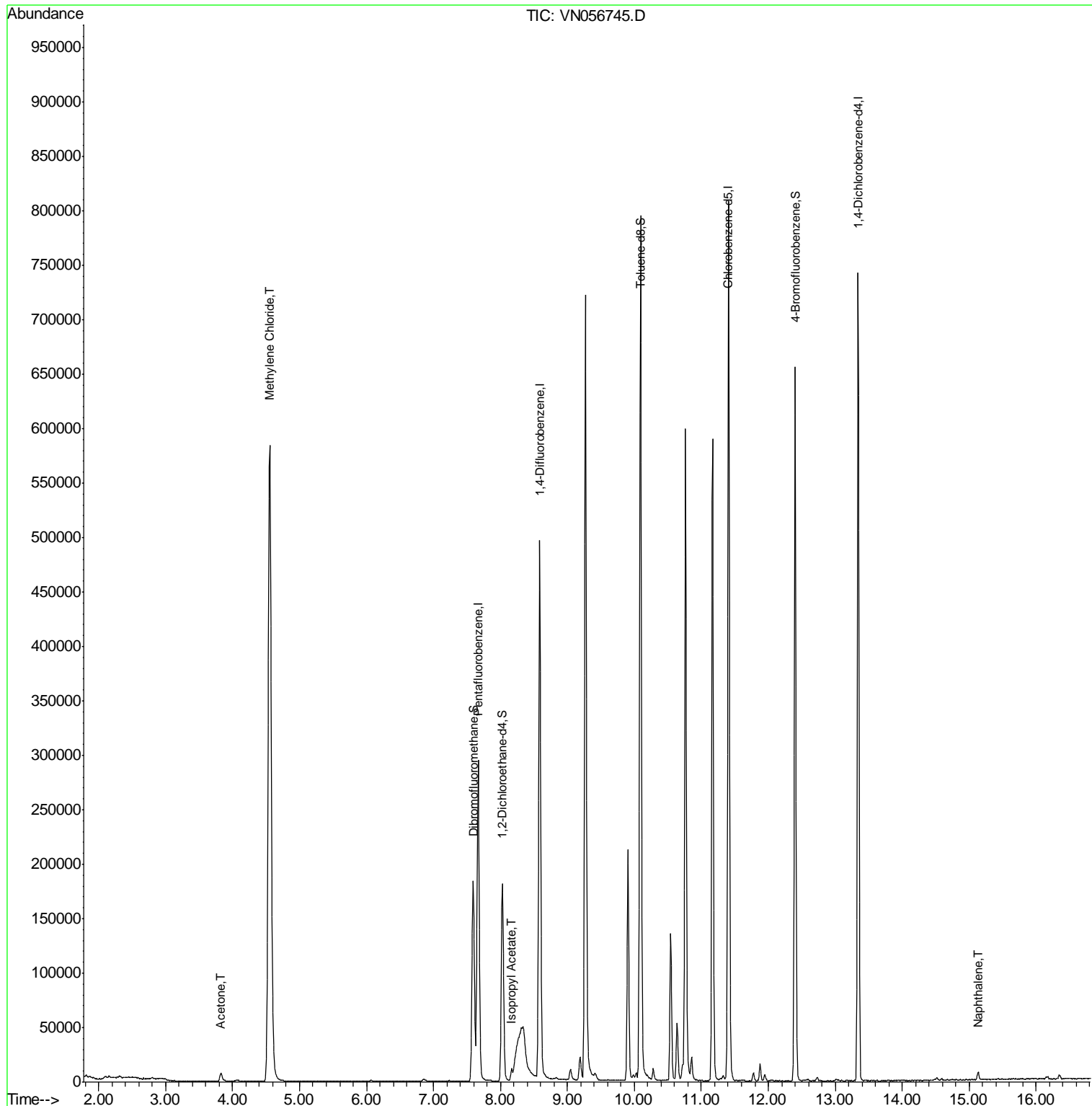
						Qvalue
16) Acetone	3.83	43	13828	10.415	ug/l	98
20) Methylene Chloride	4.55	84	477799	164.681	ug/l	97
43) Isopropyl Acetate	8.17	43	11796	1.740	ug/l	93
95) Naphthalene	15.14	128	8006	5.157	ug/l #	94

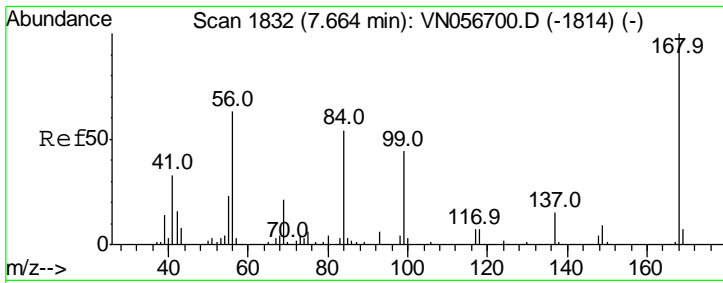
(#) = qualifier out of range (m) = manual integration (+) = signals summed

Data Path : Z:\VOASRV\HPCHEM1\MSVOA N\DATA\VN071519\  
 Data File : VN056745.D  
 Acq On : 16 Jul 2019 4:50  
 Operator : JC/SP  
 Sample : K3620-02  
 Misc : 5.00mL/MSVOA N/WATER  
 ALS Vial : 53 Sample Multiplier: 1

Instrument :  
 MSVOA\_N  
 ClientSampleId :  
 CL-01-071219-A

Quant Time: Jul 16 06:39:08 2019  
 Quant Method : Z:\VOASRV\HPCHEM1\MSVOA\_N\METHODS\82N071519W.M  
 Quant Title : SW846 8260  
 QLast Update : Tue Jul 16 01:25:25 2019  
 Response via : Initial Calibration

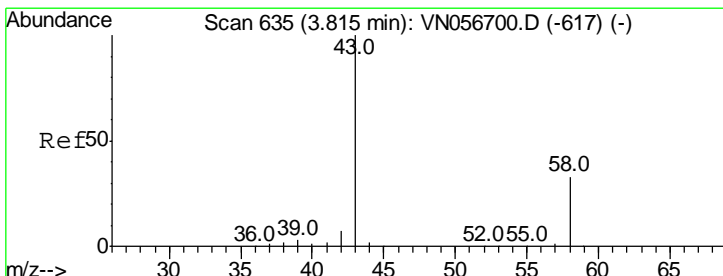
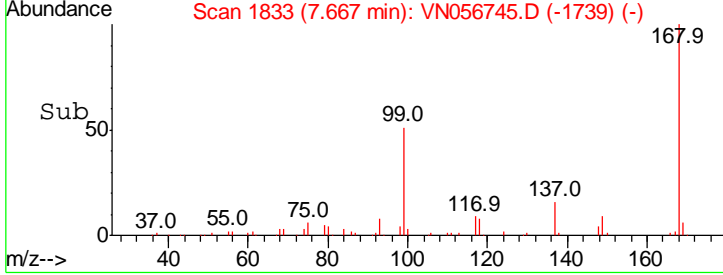
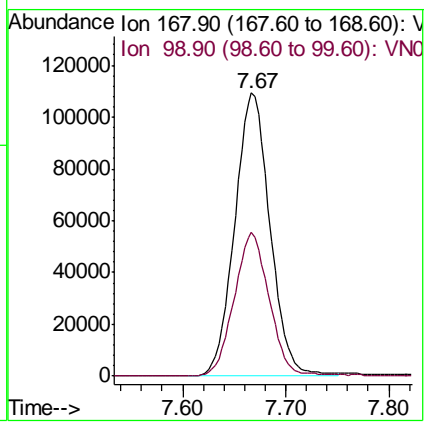
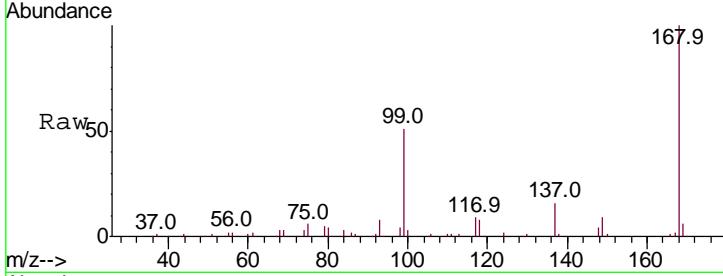




#1  
 Pentafluorobenzene  
 Concen: 50.000 ug/l  
 RT: 7.67 min Scan# 1833  
 Delta R.T. 0.00 min  
 Lab File: VN056745.D  
 Acq: 16 Jul 2019 4:50

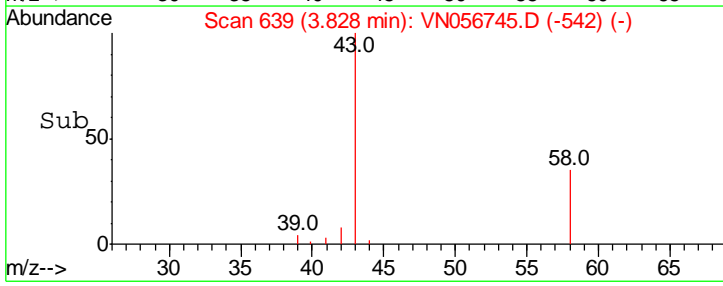
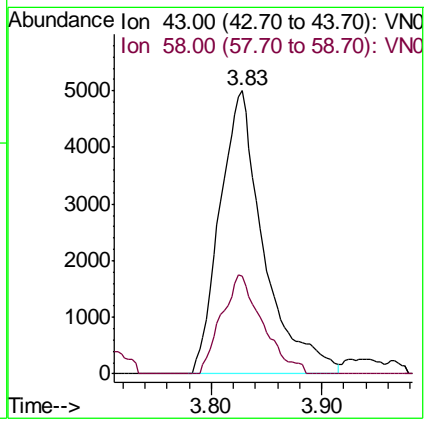
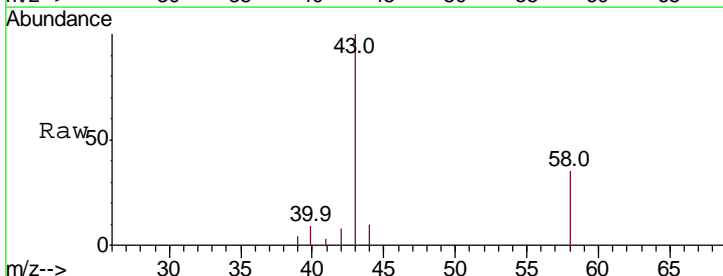
Instrument :  
 MSVOA\_N  
 ClientSampled :  
 CL-01-071219-A

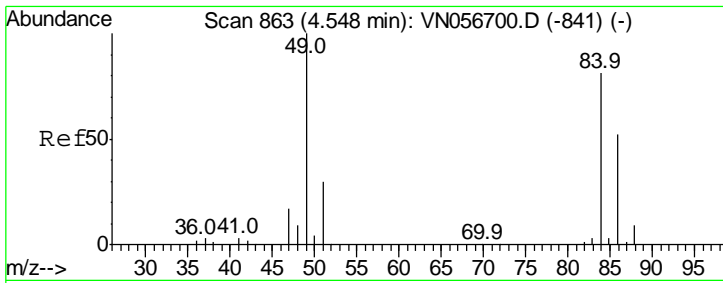
Tot Ion: 168 Resp: 260460  
 Ion Ratio Lower Upper  
 168 100  
 99 50.7 39.4 59.2



#16  
 Acetone  
 Concen: 10.415 ug/l  
 RT: 3.83 min Scan# 639  
 Delta R.T. 0.01 min  
 Lab File: VN056745.D  
 Acq: 16 Jul 2019 4:50

Tgt Ion: 43 Resp: 13828  
 Ion Ratio Lower Upper  
 43 100  
 58 34.5 26.7 40.1

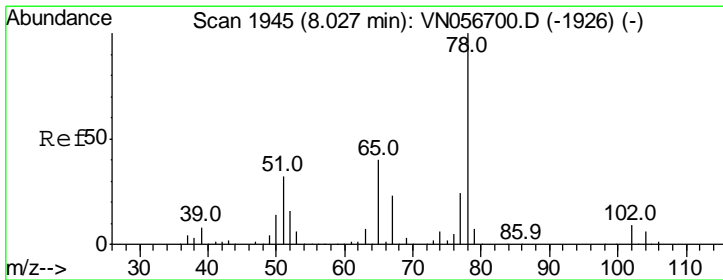
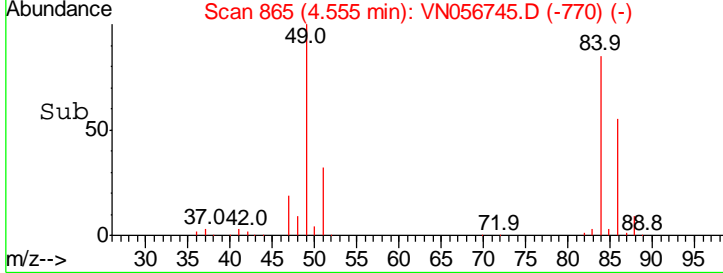
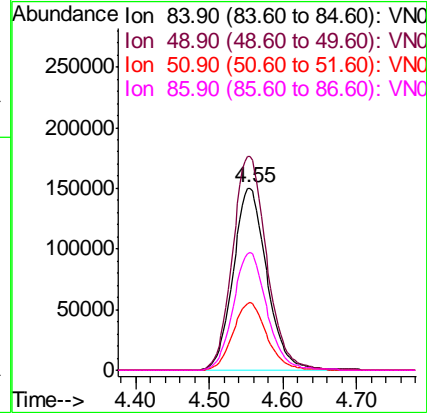
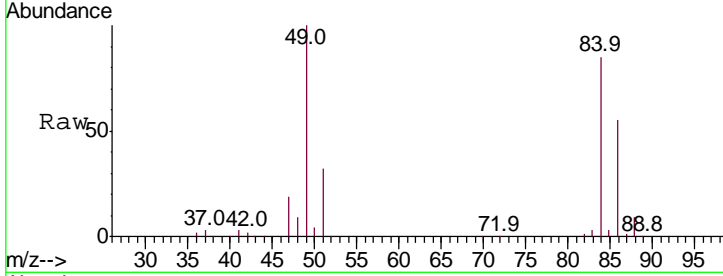




#20  
 Methylene Chloride  
 Concen: 164.681 ug/l  
 RT: 4.55 min Scan# 865  
 Delta R.T. 0.01 min  
 Lab File: VN056745.D  
 Acq: 16 Jul 2019 4:50

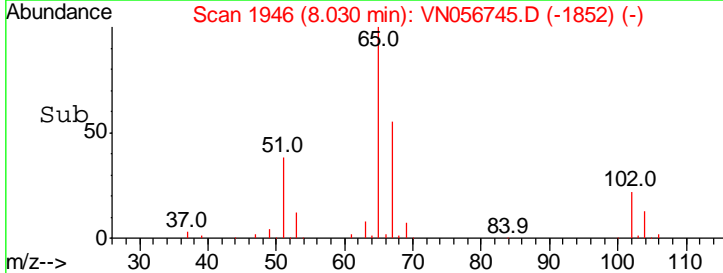
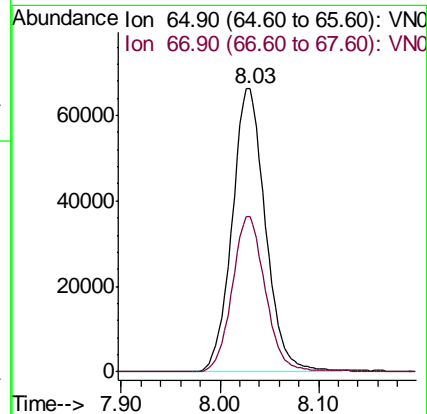
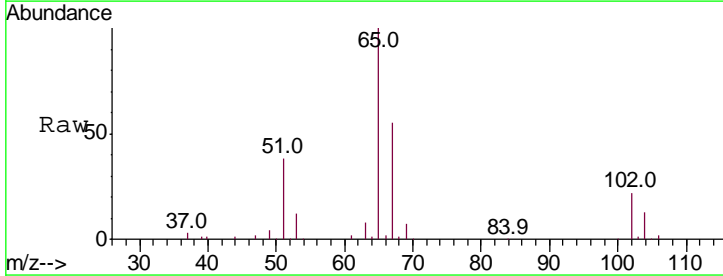
Instrument :  
 MSVOA\_N  
 ClientSampled :  
 CL-01-071219-A

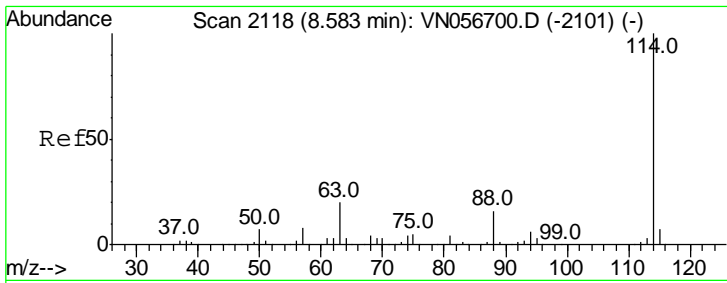
Tgt Ion	Resp	Lower	Upper
84	100		
49	117.2	98.2	147.4
51	37.4	29.6	44.4
86	64.3	51.0	76.4



#33  
 1,2-Dichloroethane-d4  
 Concen: 54.241 ug/l  
 RT: 8.03 min Scan# 1946  
 Delta R.T. 0.00 min  
 Lab File: VN056745.D  
 Acq: 16 Jul 2019 4:50

Tgt Ion	Resp	Lower	Upper
65	100		
67	54.1	0.0	109.0

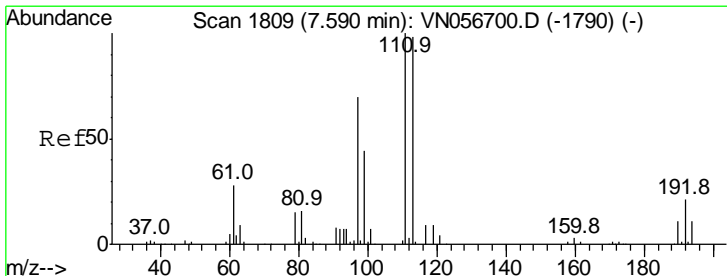
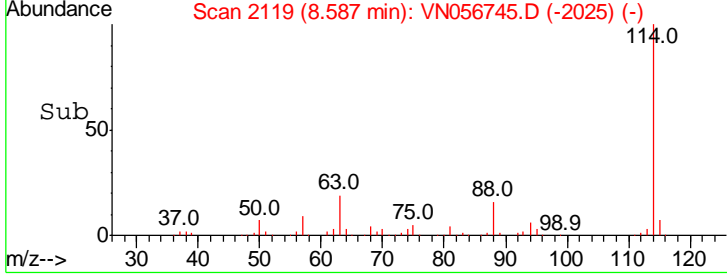
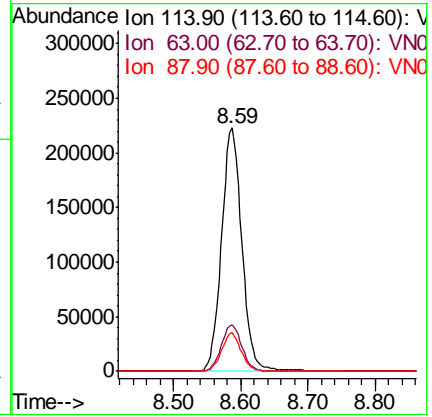
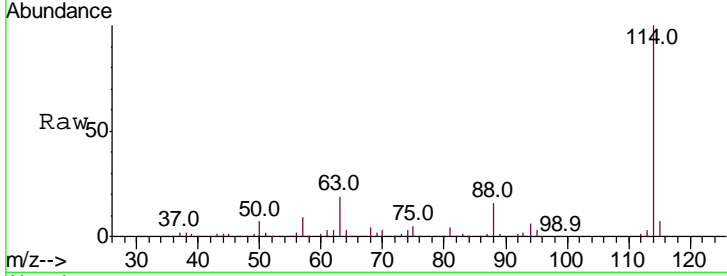




#34  
 1,4-Difluorobenzene  
 Concen: 50.000 ug/l  
 RT: 8.59 min Scan# 2119  
 Delta R.T. 0.00 min  
 Lab File: VN056745.D  
 Acq: 16 Jul 2019 4:50

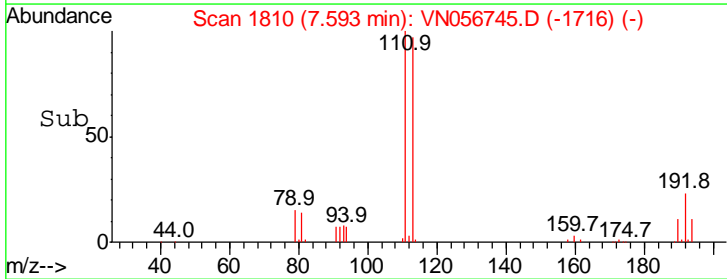
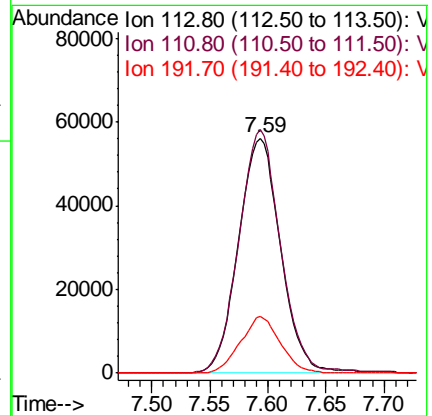
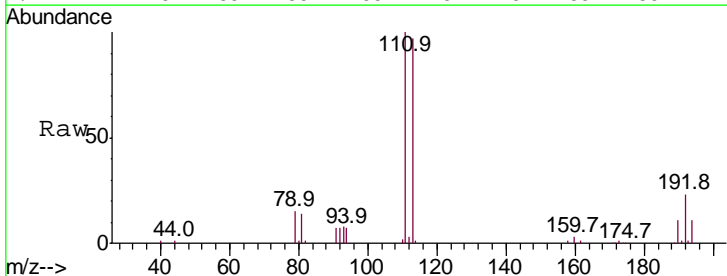
Instrument :  
 MSVOA\_N  
 ClientSampleId :  
 CL-01-071219-A

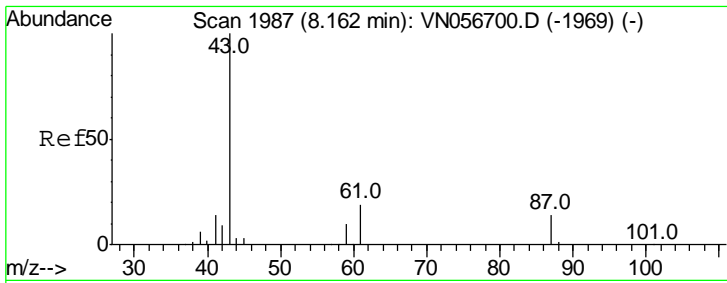
Tgt Ion	Resp	Lower	Upper
114	100		
63	19.1	0.0	39.4
88	15.7	0.0	31.2



#35  
 Dibromofluoromethane  
 Concen: 48.086 ug/l  
 RT: 7.59 min Scan# 1810  
 Delta R.T. 0.00 min  
 Lab File: VN056745.D  
 Acq: 16 Jul 2019 4:50

Tgt Ion	Resp	Lower	Upper
113	100		
111	103.4	81.8	122.6
192	22.9	17.5	26.3

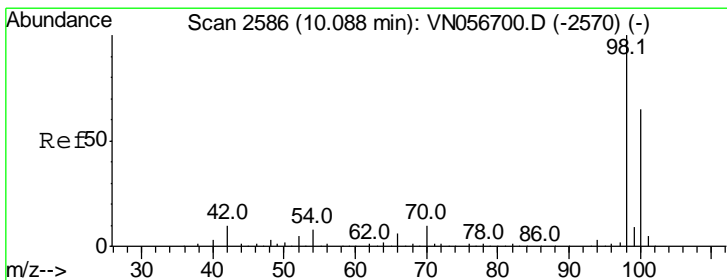
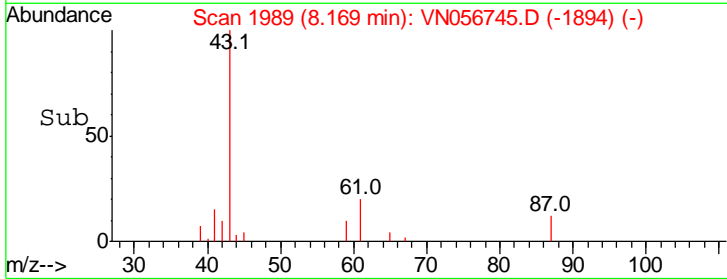
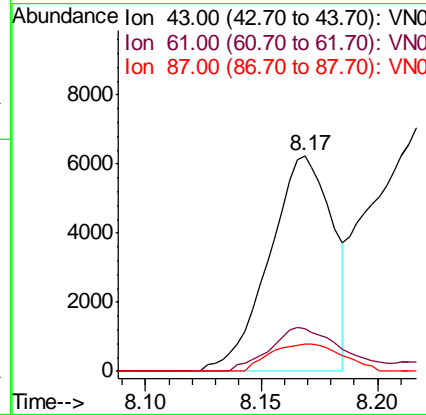
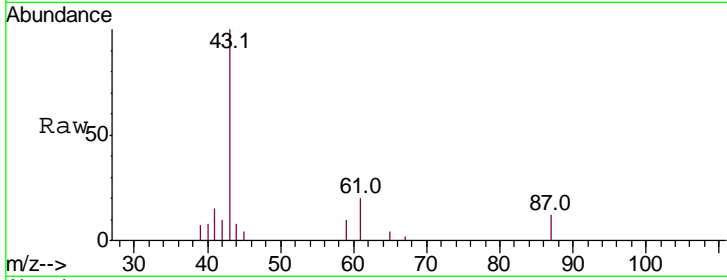




#43  
 Isopropyl Acetate  
 Concen: 1.740 ug/l  
 RT: 8.17 min Scan# 1989  
 Delta R.T. 0.01 min  
 Lab File: VN056745.D  
 Acq: 16 Jul 2019 4:50

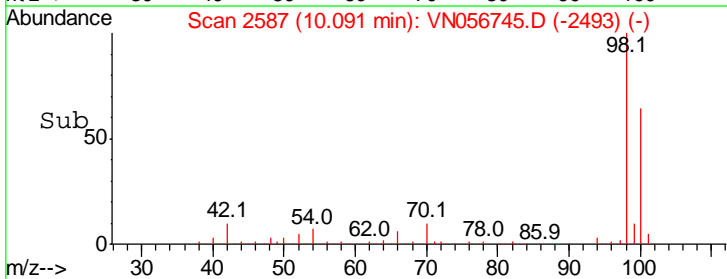
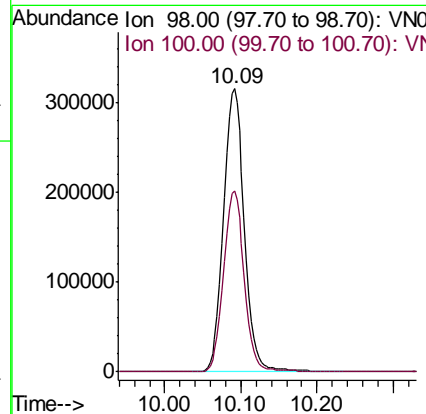
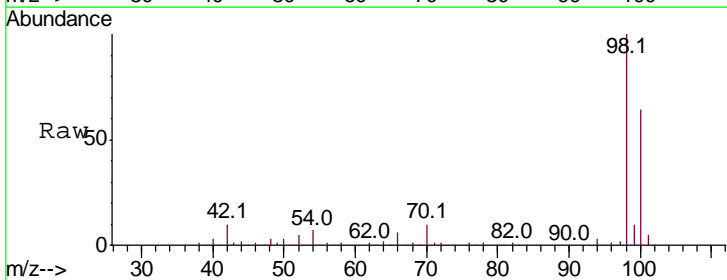
Instrument : MSVOA\_N  
 ClientSampled : CL-01-071219-A

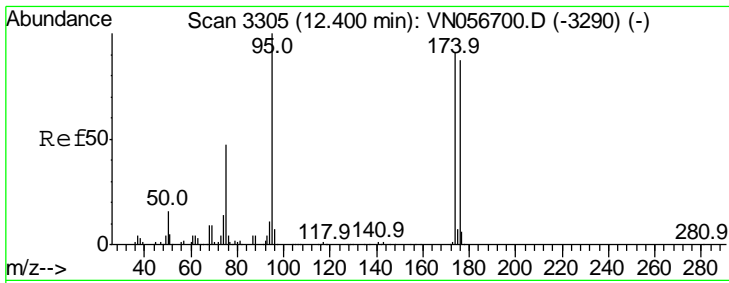
Tgt Ion	Resp	Lower	Upper
43	11796		
61	23.0	22.3	33.5
87	14.7	11.1	16.7



#50  
 Toluene-d8  
 Concen: 52.758 ug/l  
 RT: 10.09 min Scan# 2587  
 Delta R.T. 0.00 min  
 Lab File: VN056745.D  
 Acq: 16 Jul 2019 4:50

Tgt Ion	Resp	Lower	Upper
98	599485		
100	63.8	52.0	78.0

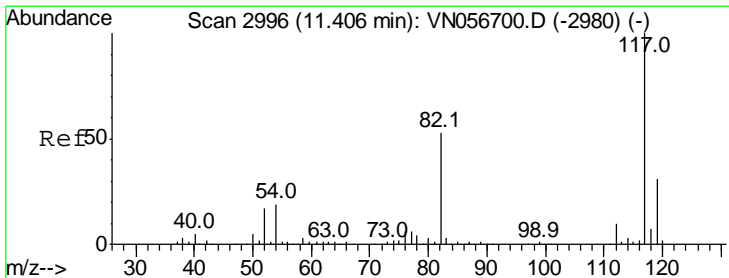
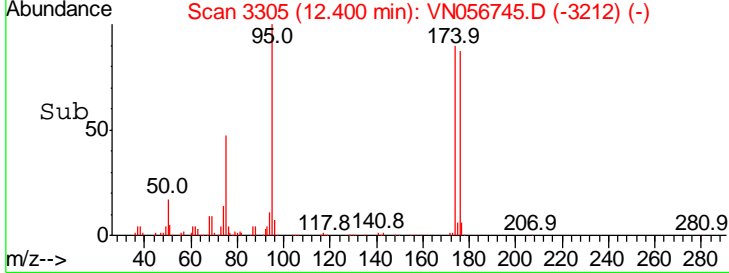
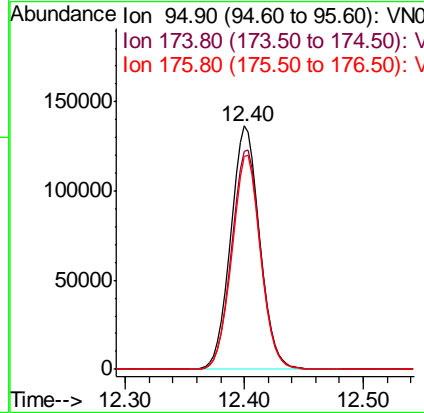
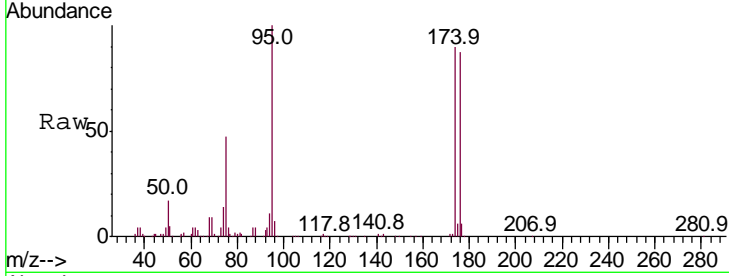




#62  
 4-Bromofluorobenzene  
 Concen: 59.910 ug/l  
 RT: 12.40 min Scan# 3305  
 Delta R.T. -0.00 min  
 Lab File: VN056745.D  
 Acq: 16 Jul 2019 4:50

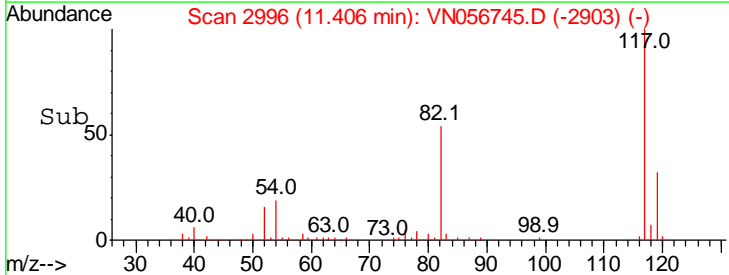
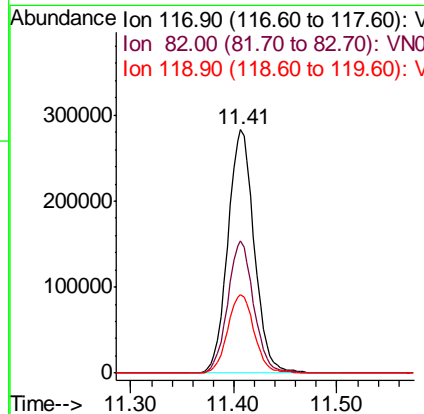
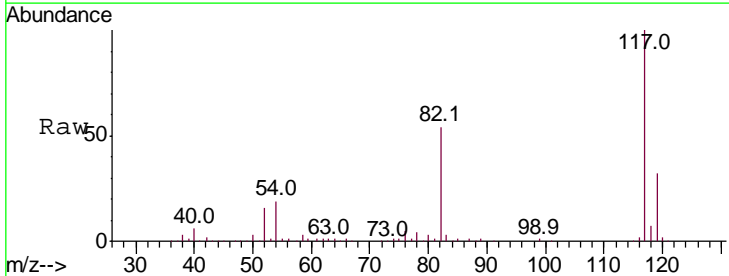
Instrument :  
 MSVOA\_N  
 ClientSampled :  
 CL-01-071219-A

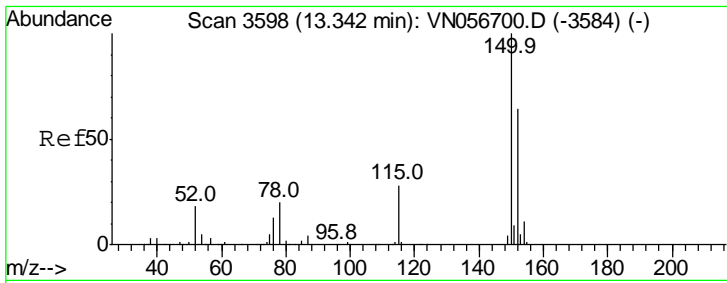
Tgt Ion	Resp	Lower	Upper
95	100		
174	91.0	0.0	180.0
176	87.2	0.0	173.2



#63  
 Chlorobenzene-d5  
 Concen: 50.000 ug/l  
 RT: 11.41 min Scan# 2996  
 Delta R.T. -0.00 min  
 Lab File: VN056745.D  
 Acq: 16 Jul 2019 4:50

Tgt Ion	Resp	Lower	Upper
117	100		
82	54.3	42.2	63.2
119	32.2	25.2	37.8

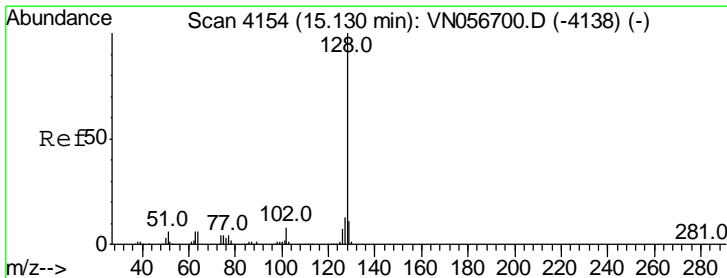
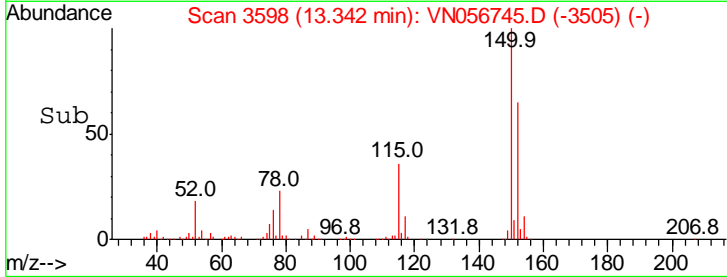
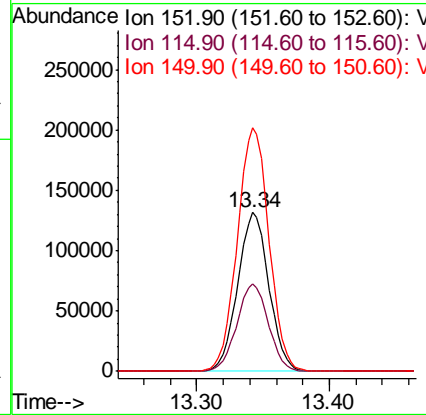
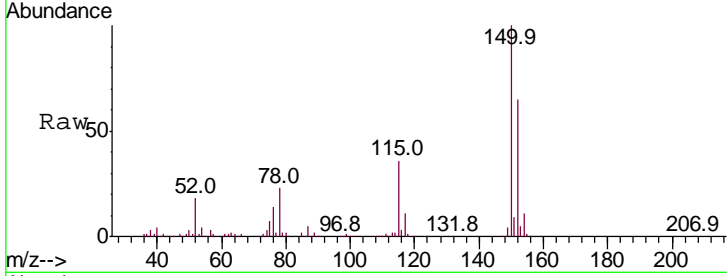




#72  
 1,4-Dichlorobenzene-d4  
 Concen: 50.000 ug/l  
 RT: 13.34 min Scan# 3598  
 Delta R.T. -0.00 min  
 Lab File: VN056745.D  
 Acq: 16 Jul 2019 4:50

Instrument :  
 MSVOA\_N  
 ClientSampled :  
 CL-01-071219-A

Tgt Ion	Resp	Lower	Upper
152	100		
115	55.3	28.2	84.7
150	154.9	0.0	345.8



#95  
 Naphthalene  
 Concen: 5.157 ug/l  
 RT: 15.14 min Scan# 4156  
 Delta R.T. 0.01 min  
 Lab File: VN056745.D  
 Acq: 16 Jul 2019 4:50

Tgt Ion	Resp	Lower	Upper
128	100		
127	11.7	10.3	15.5
129	7.5	8.7	13.1#

