

Data Path : Z:\VOASRV\HPCHEM1\MSVOA N\DATA\VN071719\  
 Data File : VN056785.D  
 Acq On : 17 Jul 2019 9:55  
 Operator : JC/SP  
 Sample : VN0717WBL01  
 Misc : 5.00mL/MSVOA N/WATER  
 ALS Vial : 4 Sample Multiplier: 1

Instrument :  
 MSVOA\_N  
 ClientSampleId :  
 VN0717WBL01

Quant Time: Jul 18 01:23:12 2019  
 Quant Method : Z:\VOASRV\HPCHEM1\MSVOA\_N\METHODS\82N071519W.M  
 Quant Title : SW846 8260  
 QLast Update : Tue Jul 16 07:03:34 2019  
 Response via : Initial Calibration

| Internal Standards         | R.T.  | QIon | Response | Conc  | Units | Dev(Min) |
|----------------------------|-------|------|----------|-------|-------|----------|
| 1) Pentafluorobenzene      | 7.66  | 168  | 245731   | 50.00 | ug/l  | 0.00     |
| 34) 1,4-Difluorobenzene    | 8.59  | 114  | 442345   | 50.00 | ug/l  | 0.00     |
| 63) Chlorobenzene-d5       | 11.41 | 117  | 457492   | 50.00 | ug/l  | 0.00     |
| 72) 1,4-Dichlorobenzene-d4 | 13.34 | 152  | 151016   | 50.00 | ug/l  | 0.00     |

| System Monitoring Compounds | R.T.  | QIon | Response | Conc   | Units   | Dev(Min) |
|-----------------------------|-------|------|----------|--------|---------|----------|
| 33) 1,2-Dichloroethane-d4   | 8.03  | 65   | 149416   | 54.97  | ug/l    | 0.00     |
| Spiked Amount               |       |      |          | 50.000 |         |          |
|                             |       |      | Recovery | =      | 109.94% |          |
| 35) Dibromofluoromethane    | 7.59  | 113  | 134944   | 49.02  | ug/l    | 0.00     |
| Spiked Amount               |       |      |          | 50.000 |         |          |
|                             |       |      | Recovery | =      | 98.04%  |          |
| 50) Toluene-d8              | 10.09 | 98   | 559016   | 52.58  | ug/l    | 0.00     |
| Spiked Amount               |       |      |          | 50.000 |         |          |
|                             |       |      | Recovery | =      | 105.16% |          |
| 62) 4-Bromofluorobenzene    | 12.40 | 95   | 189955   | 52.98  | ug/l    | 0.00     |
| Spiked Amount               |       |      |          | 50.000 |         |          |
|                             |       |      | Recovery | =      | 105.96% |          |

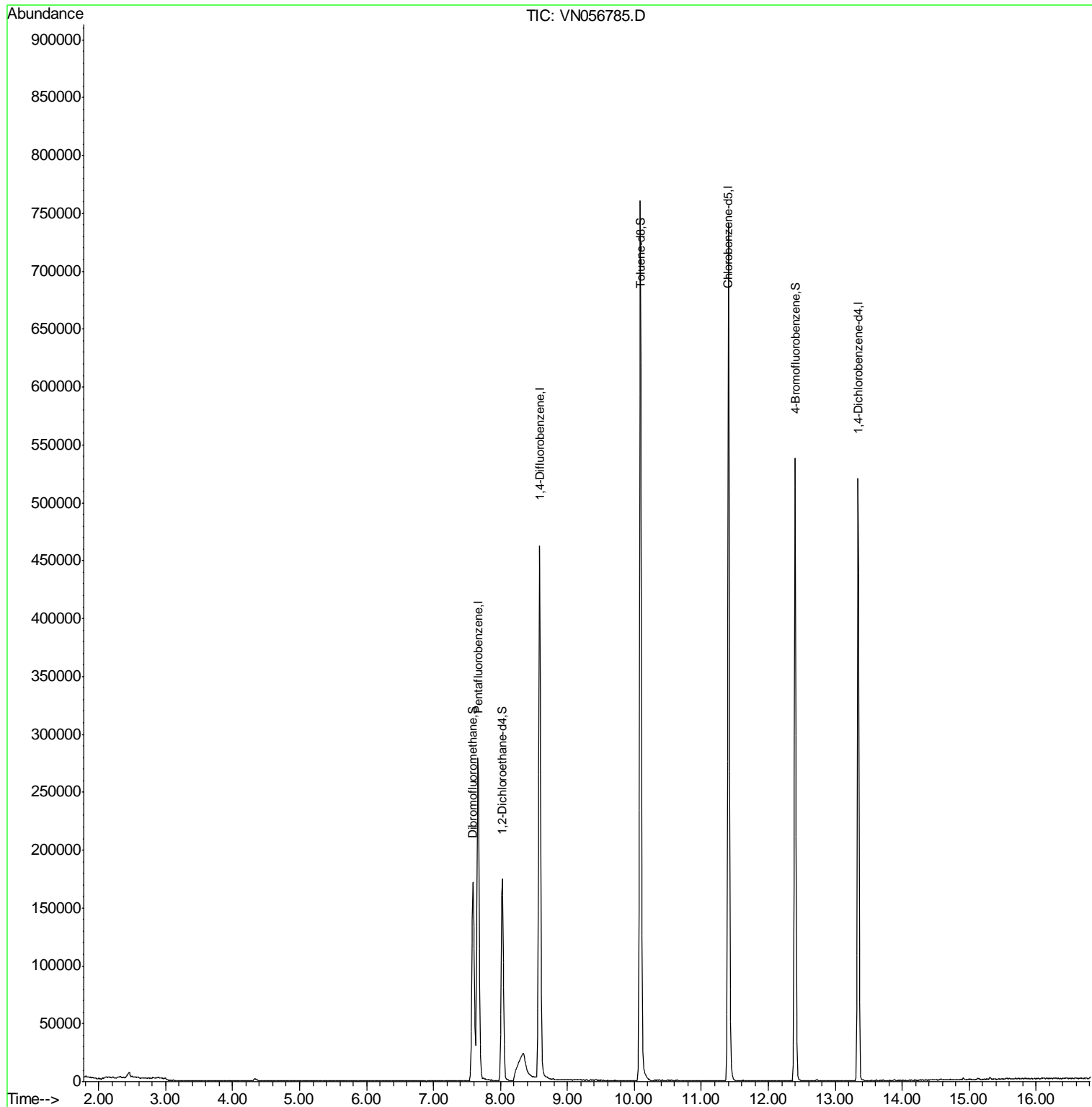
Target Compounds Qvalue  
 -----

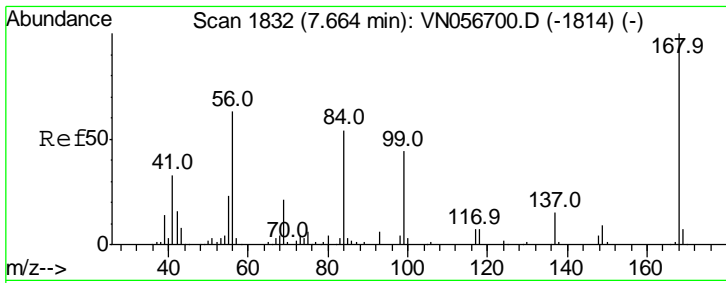
(#) = qualifier out of range (m) = manual integration (+) = signals summed

Data Path : Z:\VOASRV\HPCHEM1\MSVOA N\DATA\VN071719\  
 Data File : VN056785.D  
 Acq On : 17 Jul 2019 9:55  
 Operator : JC/SP  
 Sample : VN0717WBL01  
 Misc : 5.00mL/MSVOA N/WATER  
 ALS Vial : 4 Sample Multiplier: 1

Instrument :  
 MSVOA\_N  
 ClientSampleId :  
 VN0717WBL01

Quant Time: Jul 18 01:23:12 2019  
 Quant Method : Z:\VOASRV\HPCHEM1\MSVOA\_N\METHODS\82N071519W.M  
 Quant Title : SW846 8260  
 QLast Update : Tue Jul 16 07:03:34 2019  
 Response via : Initial Calibration

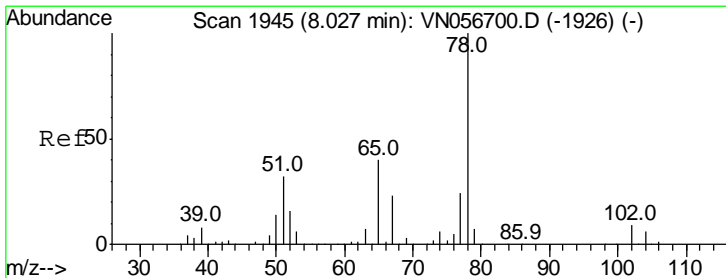
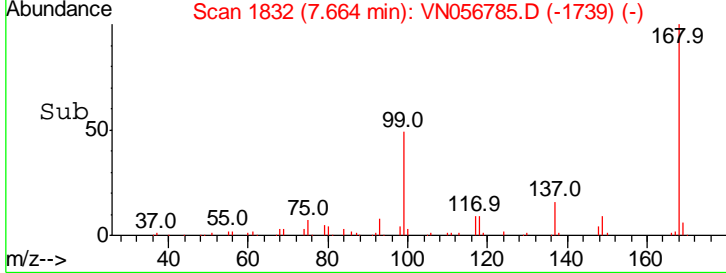
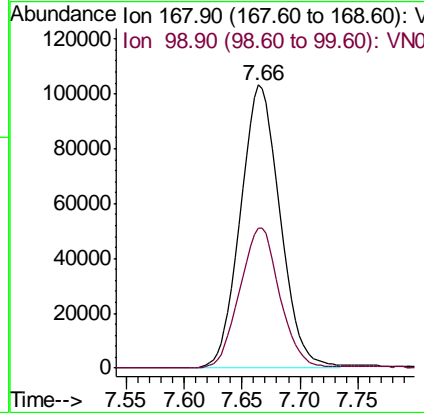
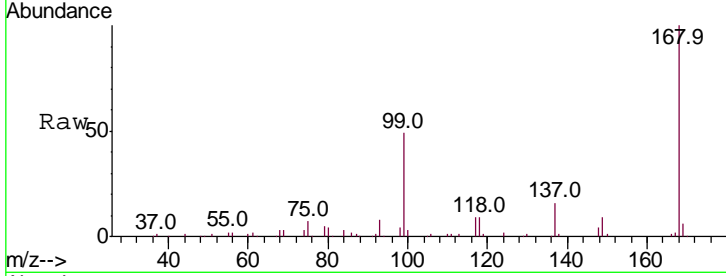




#1  
 Pentafluorobenzene  
 Concen: 50.000 ug/l  
 RT: 7.66 min Scan# 1832  
 Delta R.T. -0.00 min  
 Lab File: VN056785.D  
 Acq: 17 Jul 2019 9:55

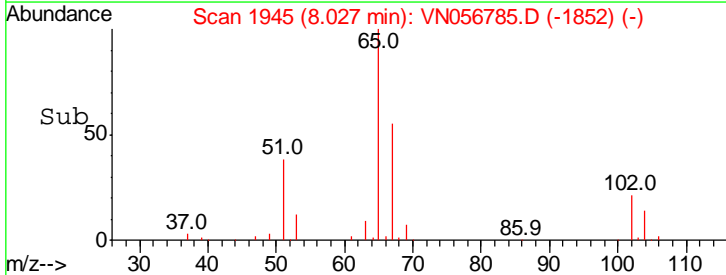
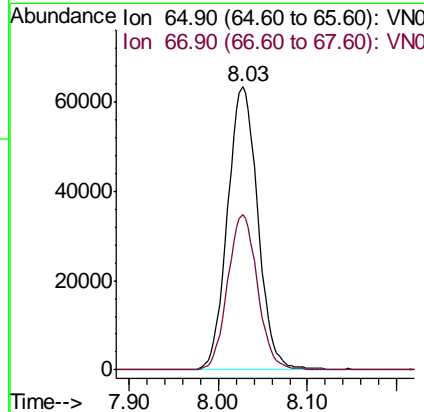
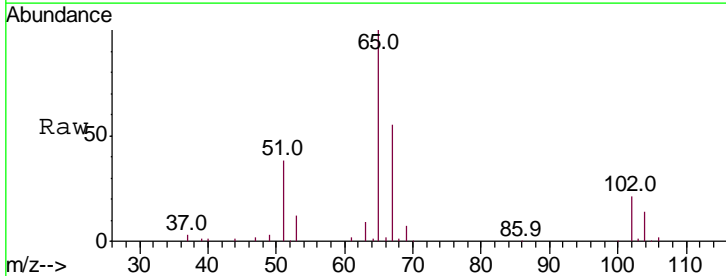
Instrument :  
 MSVOA\_N  
 ClientSampleId :  
 VN0717WBL01

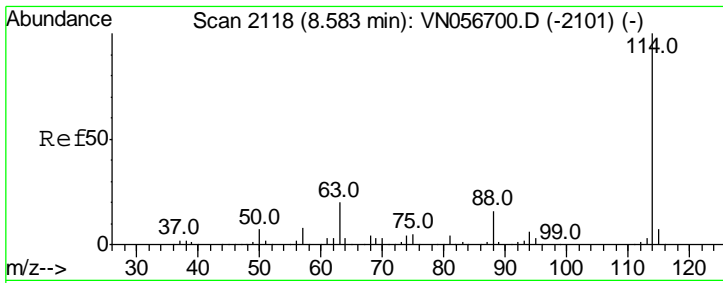
Tgt Ion: 168 Resp: 245731  
 Ion Ratio Lower Upper  
 168 100  
 99 49.4 39.4 59.2



#33  
 1,2-Dichloroethane-d4  
 Concen: 54.970 ug/l  
 RT: 8.03 min Scan# 1945  
 Delta R.T. -0.00 min  
 Lab File: VN056785.D  
 Acq: 17 Jul 2019 9:55

Tgt Ion: 65 Resp: 149416  
 Ion Ratio Lower Upper  
 65 100  
 67 54.0 0.0 109.0

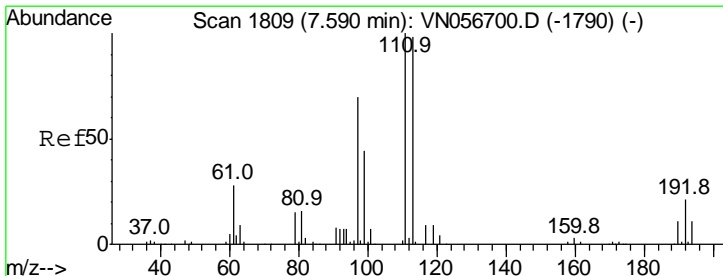
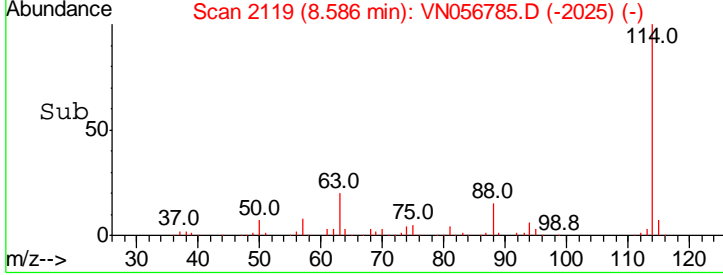
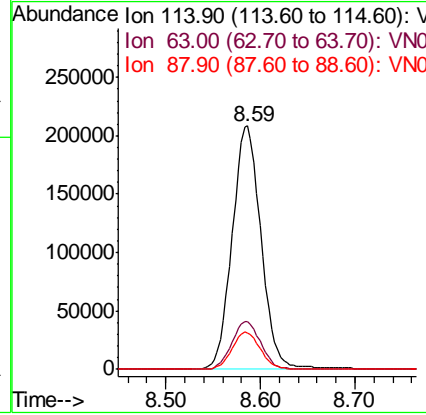
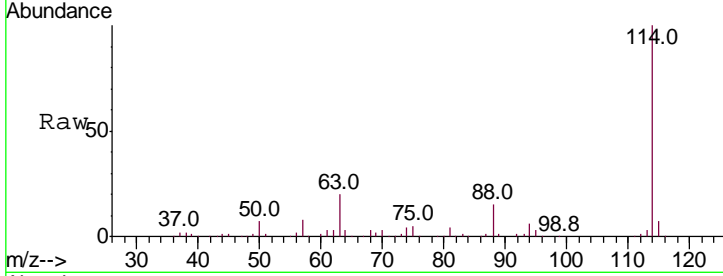




#34  
 1,4-Difluorobenzene  
 Concen: 50.000 ug/l  
 RT: 8.59 min Scan# 2119  
 Delta R.T. 0.00 min  
 Lab File: VN056785.D  
 Acq: 17 Jul 2019 9:55

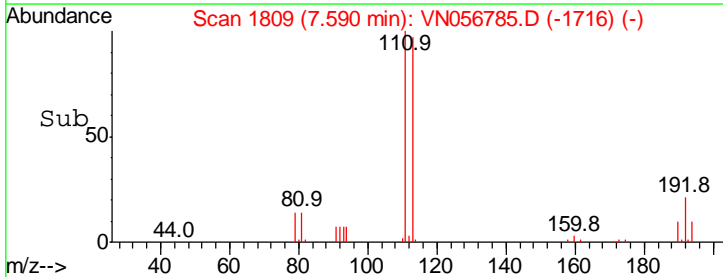
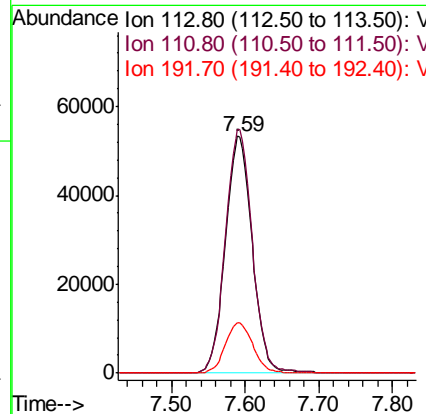
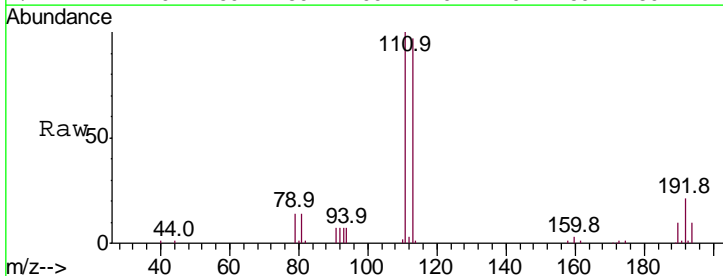
Instrument :  
 MSVOA\_N  
 ClientSampled :  
 VN0717WBL01

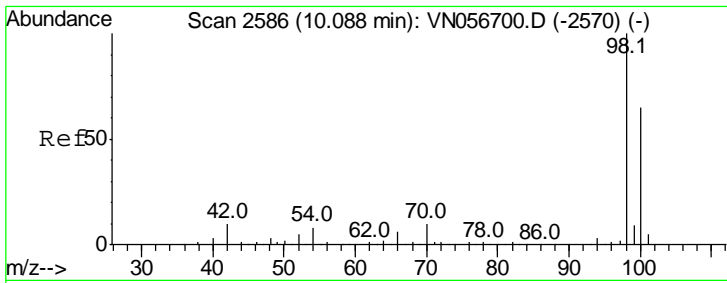
| Tgt Ion | Resp | Lower | Upper |
|---------|------|-------|-------|
| 114     | 100  |       |       |
| 63      | 19.5 | 0.0   | 39.4  |
| 88      | 15.2 | 0.0   | 31.2  |



#35  
 Dibromofluoromethane  
 Concen: 49.021 ug/l  
 RT: 7.59 min Scan# 1809  
 Delta R.T. -0.00 min  
 Lab File: VN056785.D  
 Acq: 17 Jul 2019 9:55

| Tgt Ion | Resp  | Lower | Upper |
|---------|-------|-------|-------|
| 113     | 100   |       |       |
| 111     | 102.7 | 81.8  | 122.6 |
| 192     | 21.7  | 17.5  | 26.3  |

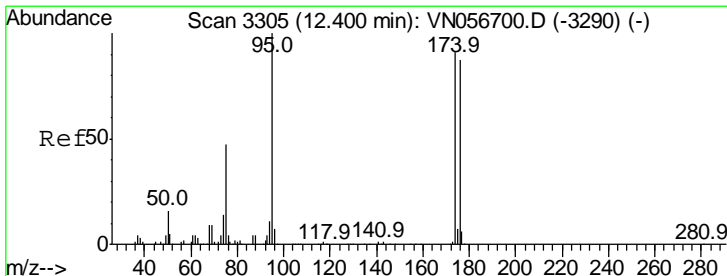
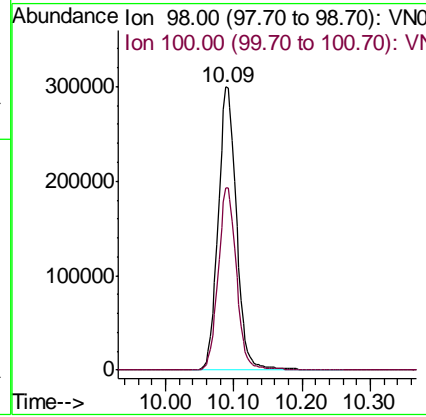
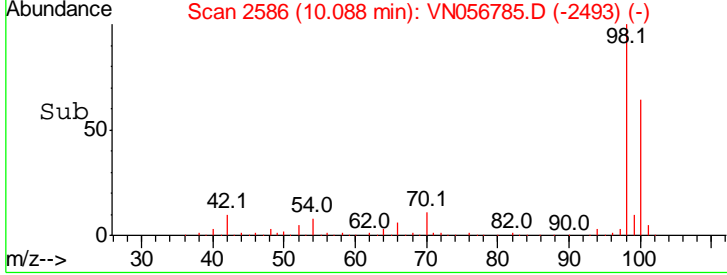
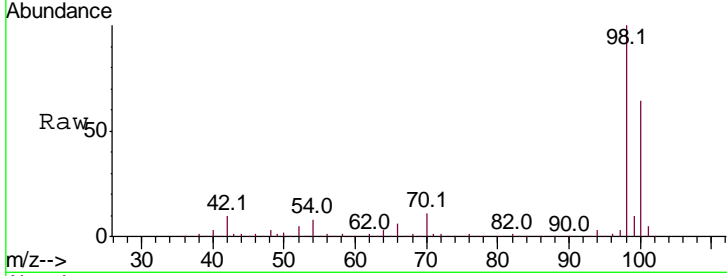




#50  
 Toluene-d8  
 Concen: 52.579 ug/l  
 RT: 10.09 min Scan# 2586  
 Delta R.T. -0.00 min  
 Lab File: VN056785.D  
 Acq: 17 Jul 2019 9:55

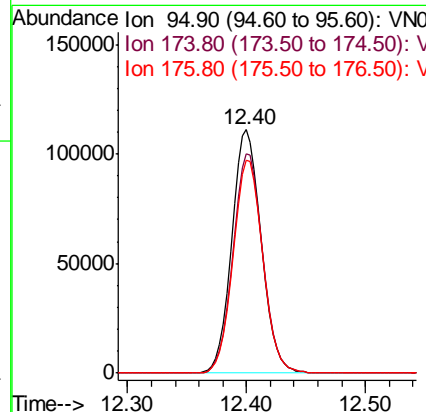
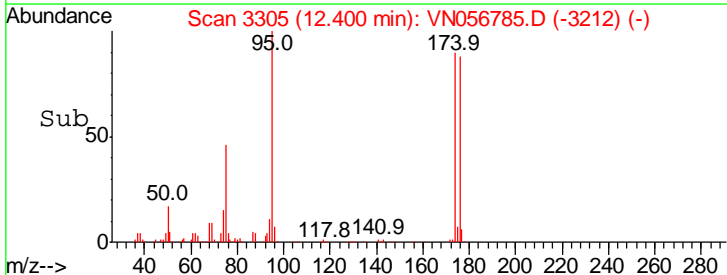
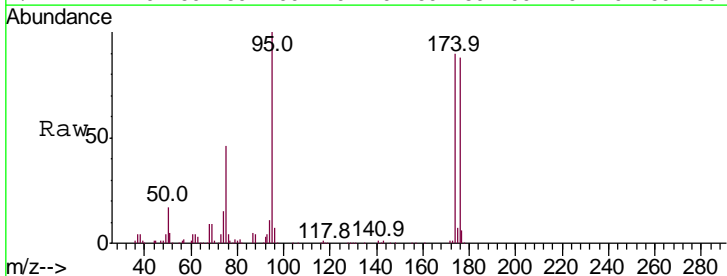
Instrument : MSVOA\_N  
 ClientSampled : VN0717WBL01

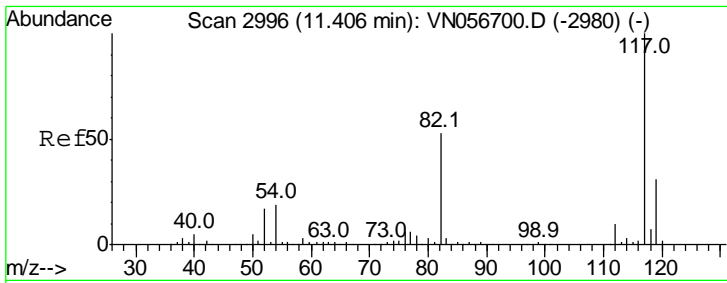
| Tgt Ion | Resp | Lower | Upper |
|---------|------|-------|-------|
| 98      | 100  |       |       |
| 100     | 64.4 | 52.0  | 78.0  |



#62  
 4-Bromofluorobenzene  
 Concen: 52.979 ug/l  
 RT: 12.40 min Scan# 3305  
 Delta R.T. -0.00 min  
 Lab File: VN056785.D  
 Acq: 17 Jul 2019 9:55

| Tgt Ion | Resp | Lower | Upper |
|---------|------|-------|-------|
| 95      | 100  |       |       |
| 174     | 90.9 | 0.0   | 180.0 |
| 176     | 88.5 | 0.0   | 173.2 |

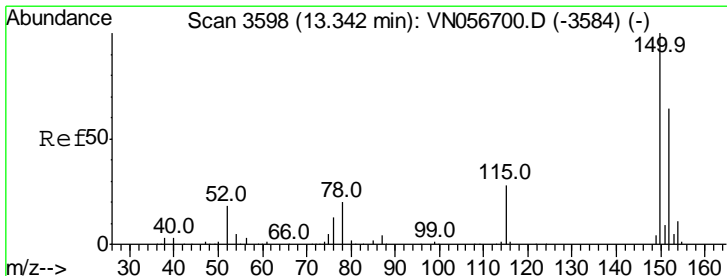
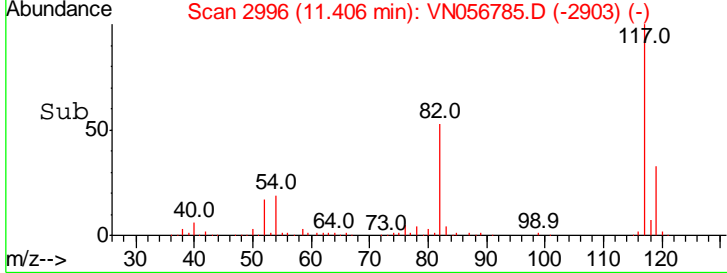
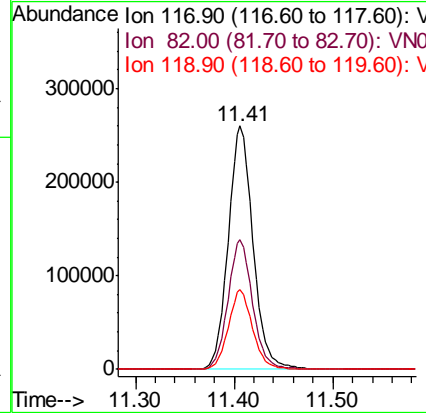
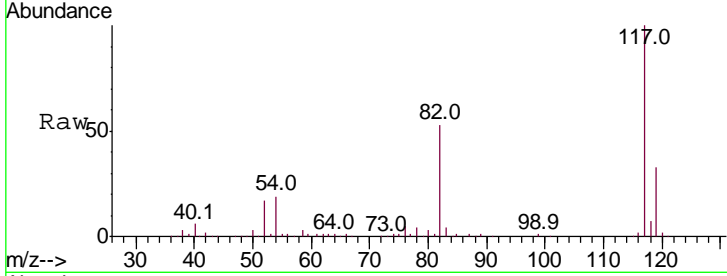




#63  
 Chlorobenzene-d5  
 Concen: 50.000 ug/l  
 RT: 11.41 min Scan# 2996  
 Delta R.T. -0.00 min  
 Lab File: VN056785.D  
 Acq: 17 Jul 2019 9:55

Instrument : MSVOA\_N  
 ClientSampled : VN0717WBL01

| Tgt Ion | Resp | Lower | Upper |
|---------|------|-------|-------|
| 117     | 100  |       |       |
| 82      | 53.1 | 42.2  | 63.2  |
| 119     | 32.7 | 25.2  | 37.8  |



#72  
 1,4-Dichlorobenzene-d4  
 Concen: 50.000 ug/l  
 RT: 13.34 min Scan# 3598  
 Delta R.T. -0.00 min  
 Lab File: VN056785.D  
 Acq: 17 Jul 2019 9:55

| Tgt Ion | Resp  | Lower | Upper |
|---------|-------|-------|-------|
| 152     | 100   |       |       |
| 115     | 55.8  | 28.2  | 84.7  |
| 150     | 156.0 | 0.0   | 345.8 |

