

Data Path : Z:\VOASRV\HPCHEM1\MSVOA N\DATA\VN071919\  
 Data File : VN056846.D  
 Acq On : 19 Jul 2019 20:43  
 Operator : JC/SP  
 Sample : K3887-02  
 Misc : 5.00mL/MSVOA N/WATER  
 ALS Vial : 29 Sample Multiplier: 1

Instrument :  
 MSVOA\_N  
 ClientSampled :  
 AOC-7(1)

Quant Time: Jul 20 00:37:45 2019  
 Quant Method : Z:\VOASRV\HPCHEM1\MSVOA\_N\METHODS\82N071519W.M  
 Quant Title : SW846 8260  
 QLast Update : Tue Jul 16 07:03:34 2019  
 Response via : Initial Calibration

Internal Standards	R.T.	QIon	Response	Conc	Units	Dev(Min)
1) Pentafluorobenzene	7.67	168	243902	50.00	ug/l	0.00
34) 1,4-Difluorobenzene	8.59	114	447804	50.00	ug/l	0.00
63) Chlorobenzene-d5	11.41	117	498936	50.00	ug/l	0.00
72) 1,4-Dichlorobenzene-d4	13.34	152	176892	50.00	ug/l	0.00

## System Monitoring Compounds

33) 1,2-Dichloroethane-d4	8.03	65	147653	54.73	ug/l	0.00
Spiked Amount				50.000		
			Recovery	=	109.46%	
35) Dibromofluoromethane	7.59	113	133011	47.73	ug/l	0.00
Spiked Amount				50.000		
			Recovery	=	95.46%	
50) Toluene-d8	10.09	98	578200	53.72	ug/l	0.00
Spiked Amount				50.000		
			Recovery	=	107.44%	
62) 4-Bromofluorobenzene	12.40	95	215035	59.24	ug/l	0.00
Spiked Amount				50.000		
			Recovery	=	118.48%	

## Target Compounds

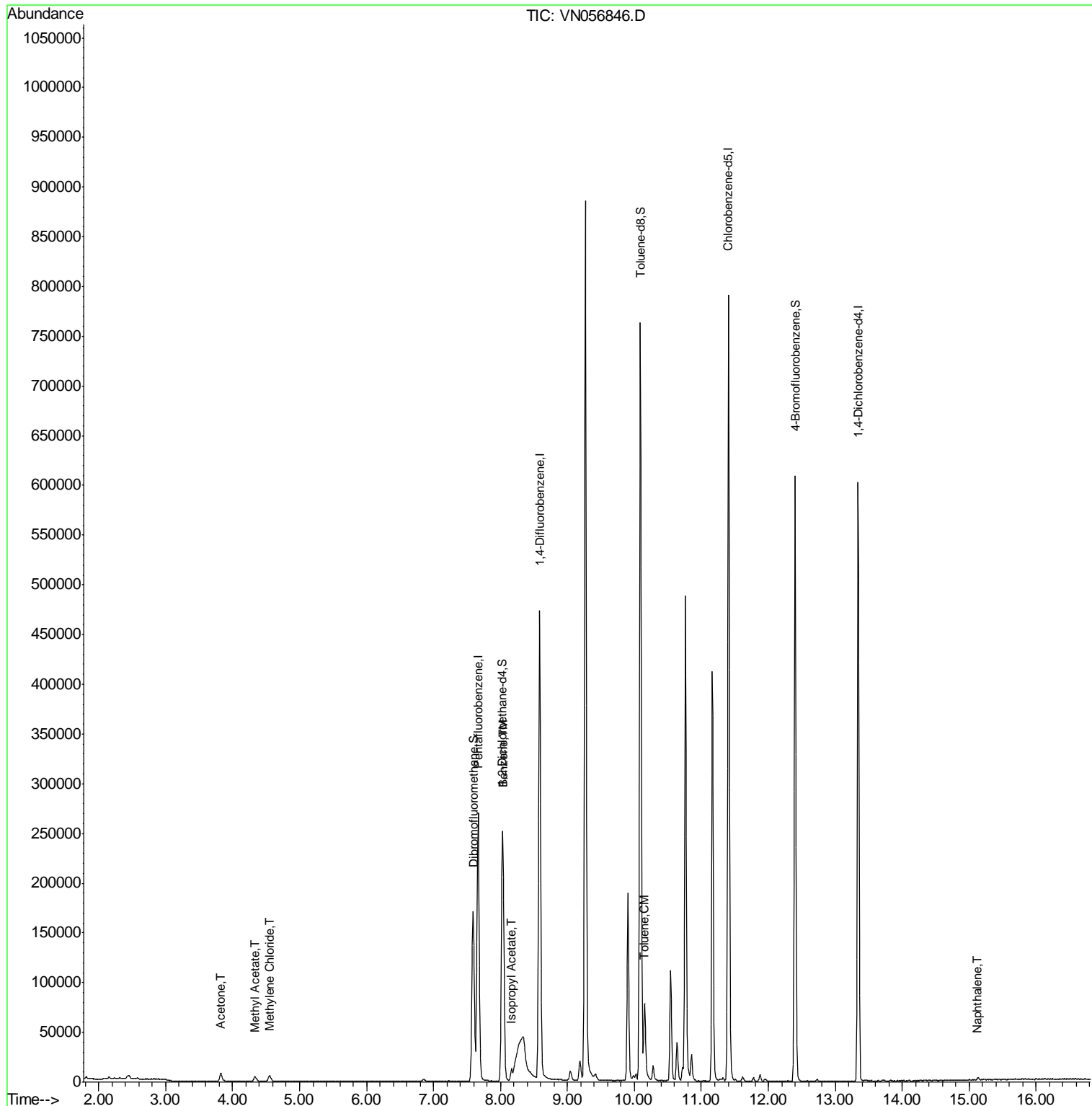
						Qvalue
16) Acetone	3.82	43	14005	11.265	ug/l	91
18) Methyl Acetate	4.34	43	10055	2.680	ug/l	98
20) Methylene Chloride	4.54	84	4517	1.663	ug/l	97
40) Benzene	8.04	78	119597	9.419	ug/l	100
43) Isopropyl Acetate	8.17	43	14950	2.328	ug/l	94
52) Toluene	10.16	92	32302	4.284	ug/l	97
95) Naphthalene	15.13	128	2776	4.792	ug/l #	76

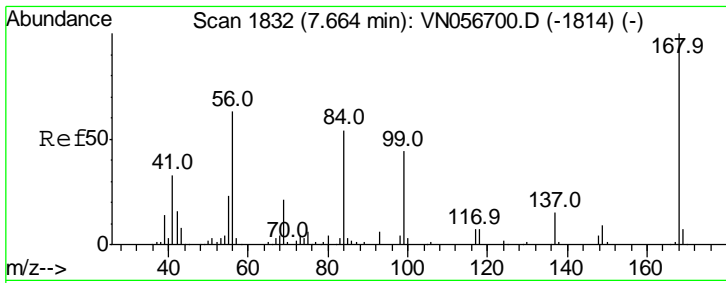
(#) = qualifier out of range (m) = manual integration (+) = signals summed

Data Path : Z:\VOASRV\HPCHEM1\MSVOA N\DATA\VN071919\  
 Data File : VN056846.D  
 Acq On : 19 Jul 2019 20:43  
 Operator : JC/SP  
 Sample : K3887-02  
 Misc : 5.00mL/MSVOA N/WATER  
 ALS Vial : 29 Sample Multiplier: 1

Instrument :  
 MSVOA\_N  
 Client Sampled :  
 AOC-7(1)

Quant Time: Jul 20 00:37:45 2019  
 Quant Method : Z:\VOASRV\HPCHEM1\MSVOA\_N\METHODS\82N071519W.M  
 Quant Title : SW846 8260  
 QLast Update : Tue Jul 16 07:03:34 2019  
 Response via : Initial Calibration

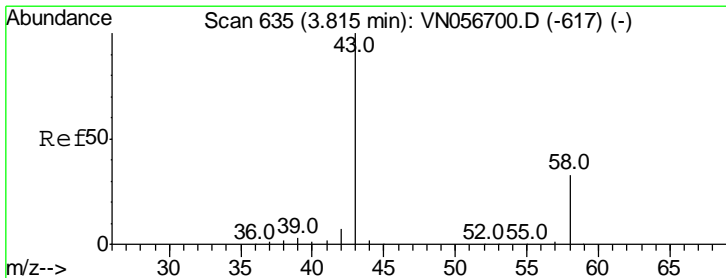
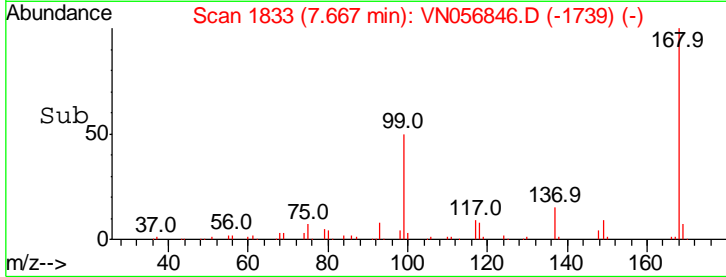
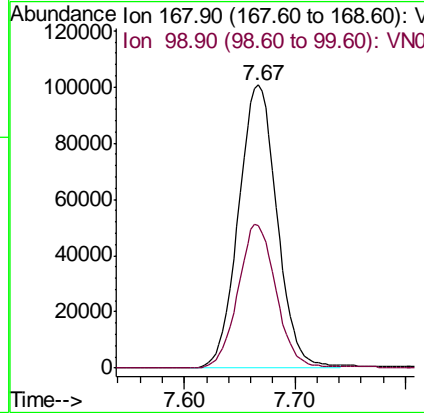
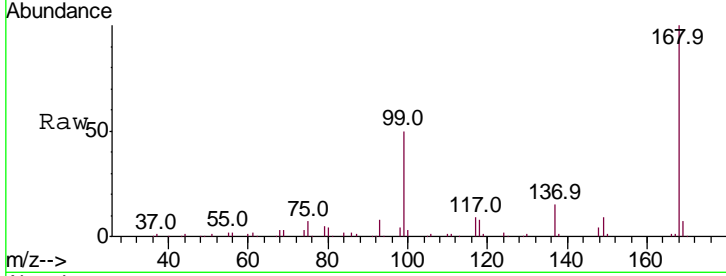




#1  
 Pentafluorobenzene  
 Concen: 50.000 ug/l  
 RT: 7.67 min Scan# 1833  
 Delta R.T. 0.00 min  
 Lab File: VN056846.D  
 Acq: 19 Jul 2019 20:43

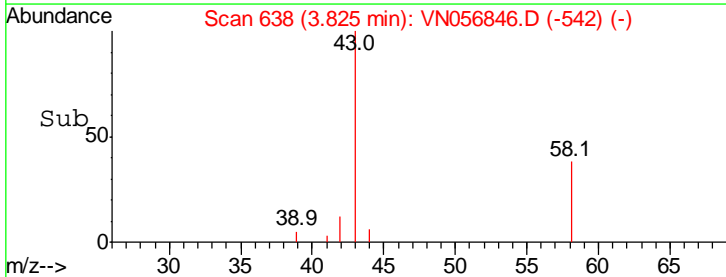
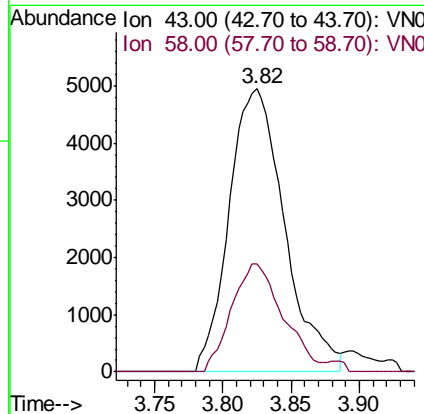
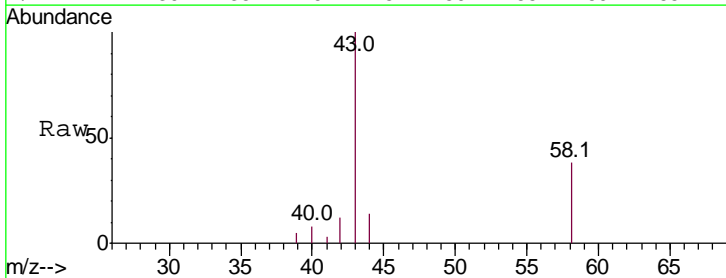
Instrument :  
 MSVOA\_N  
 ClientSampled :  
 AOC-7(1)

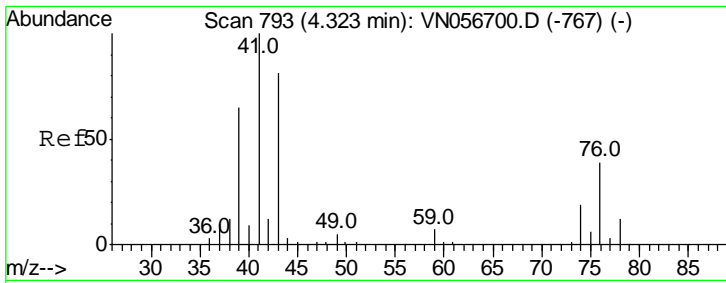
Tot Ion:168 Resp: 243902  
 Ion Ratio Lower Upper  
 168 100  
 99 50.3 39.4 59.2



#16  
 Acetone  
 Concen: 11.265 ug/l  
 RT: 3.82 min Scan# 638  
 Delta R.T. 0.01 min  
 Lab File: VN056846.D  
 Acq: 19 Jul 2019 20:43

Tgt Ion: 43 Resp: 14005  
 Ion Ratio Lower Upper  
 43 100  
 58 38.4 26.7 40.1

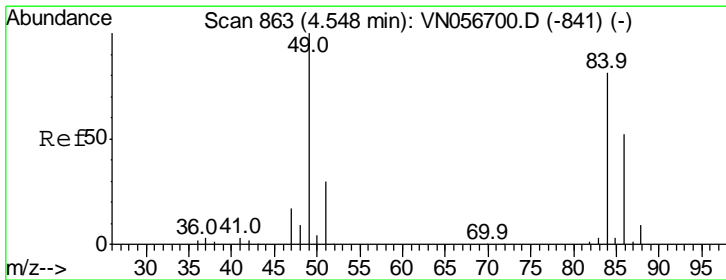
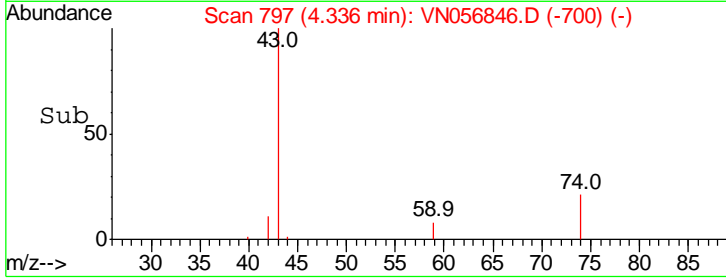
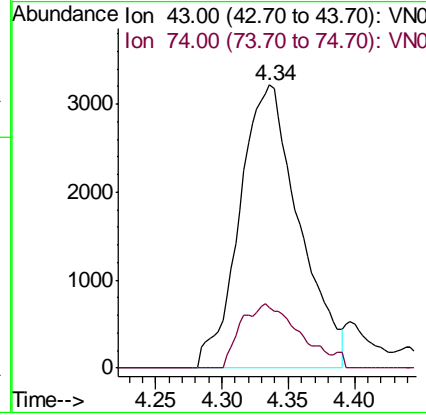
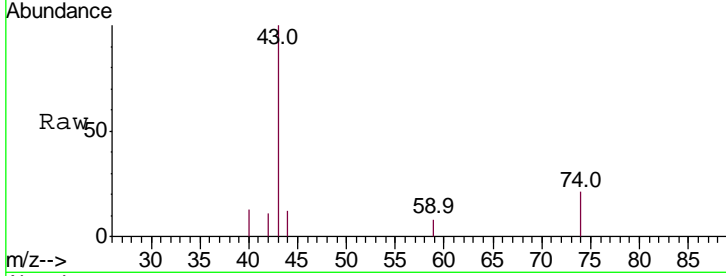




#18  
 Methyl Acetate  
 Concen: 2.680 ug/l  
 RT: 4.34 min Scan# 797  
 Delta R.T. 0.01 min  
 Lab File: VN056846.D  
 Acq: 19 Jul 2019 20:43

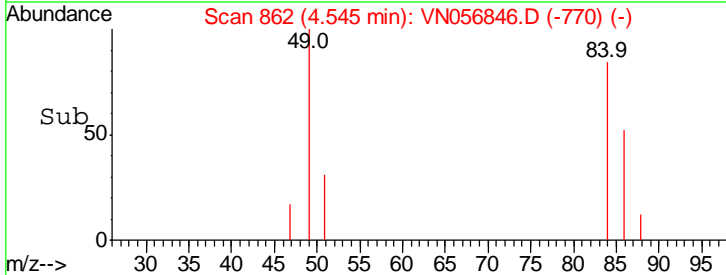
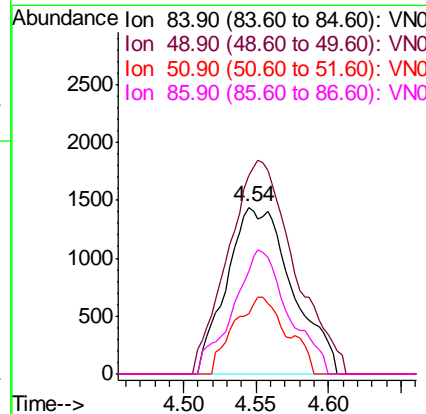
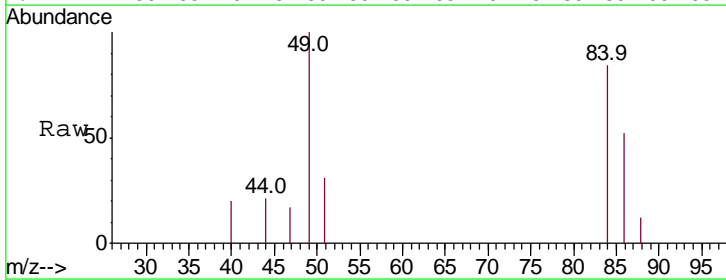
Instrument :  
 MSVOA\_N  
 ClientSampled :  
 AOC-7(1)

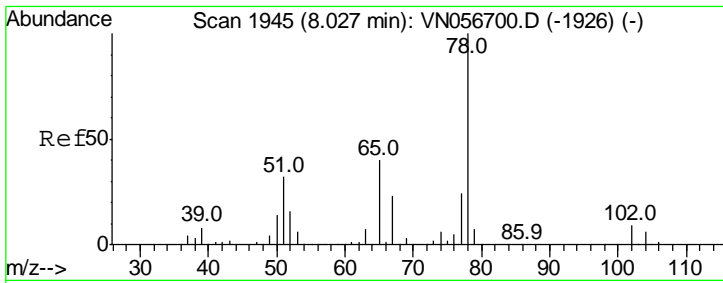
Tgt Ion: 43 Resp: 10055  
 Ion Ratio Lower Upper  
 43 100  
 74 22.8 18.9 28.3



#20  
 Methylene Chloride  
 Concen: 1.663 ug/l  
 RT: 4.54 min Scan# 862  
 Delta R.T. -0.00 min  
 Lab File: VN056846.D  
 Acq: 19 Jul 2019 20:43

Tgt Ion: 84 Resp: 4517  
 Ion Ratio Lower Upper  
 84 100  
 49 119.3 98.2 147.4  
 51 36.5 29.6 44.4  
 86 61.7 51.0 76.4

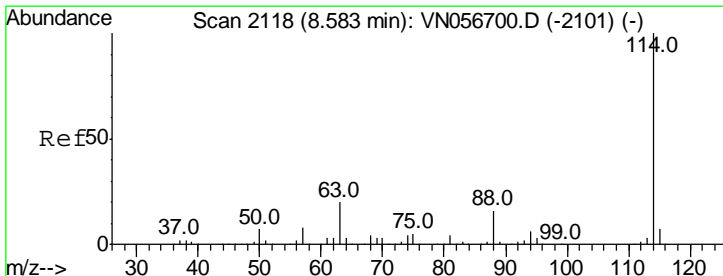
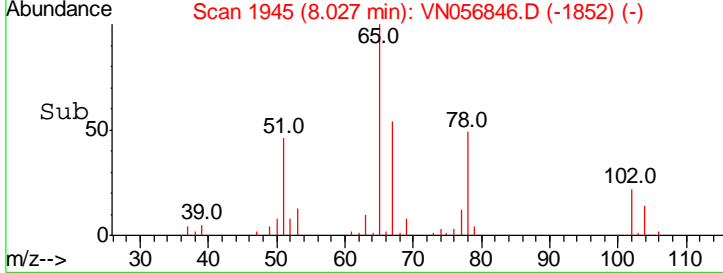
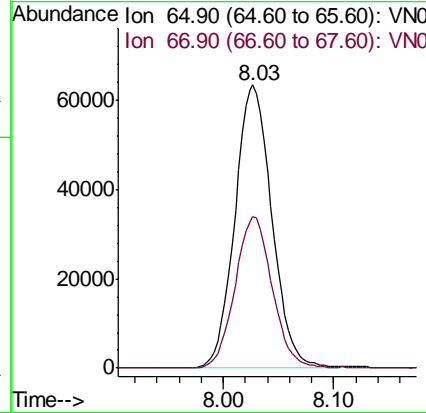
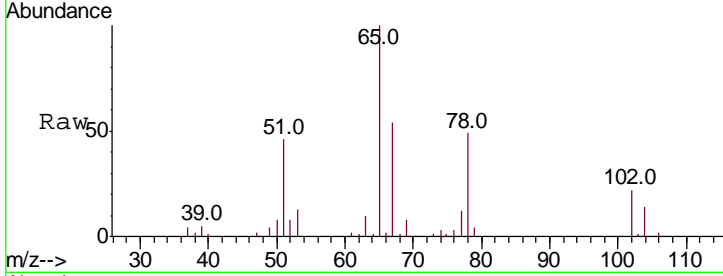




#33  
 1,2-Dichloroethane-d4  
 Concen: 54.729 ug/l  
 RT: 8.03 min Scan# 1945  
 Delta R.T. -0.00 min  
 Lab File: VN056846.D  
 Acq: 19 Jul 2019 20:43

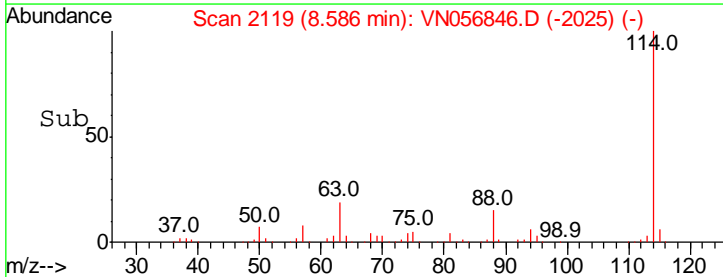
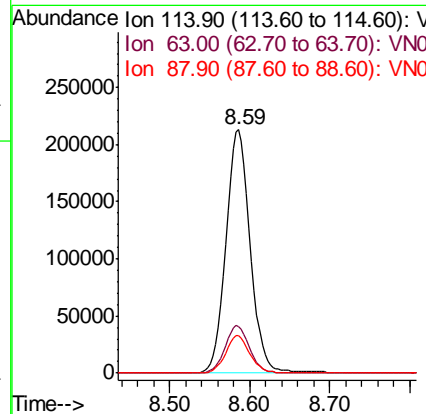
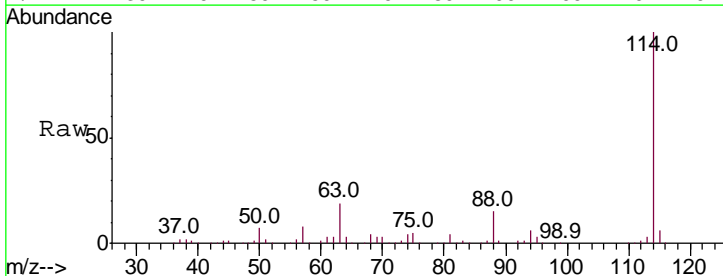
Instrument :  
 MSVOA\_N  
 ClientSampled :  
 AOC-7(1)

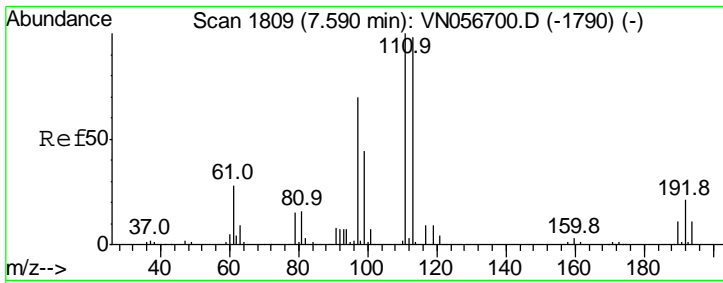
Tgt Ion	Resp	Lower	Upper
65	147653		
65	100		
67	53.6	0.0	109.0



#34  
 1,4-Difluorobenzene  
 Concen: 50.000 ug/l  
 RT: 8.59 min Scan# 2119  
 Delta R.T. 0.00 min  
 Lab File: VN056846.D  
 Acq: 19 Jul 2019 20:43

Tgt Ion	Resp	Lower	Upper
114	447804		
114	100		
63	19.2	0.0	39.4
88	15.5	0.0	31.2

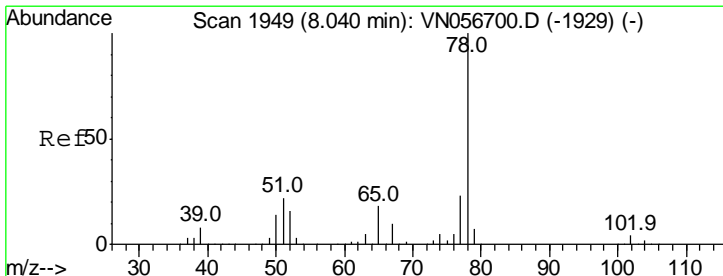
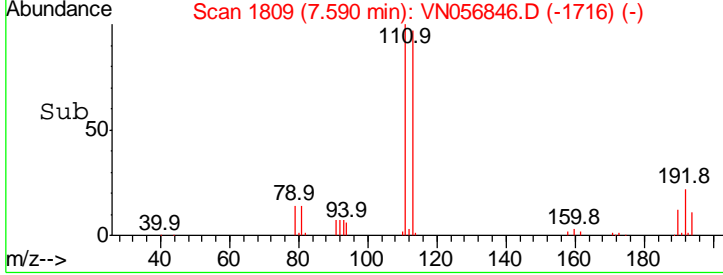
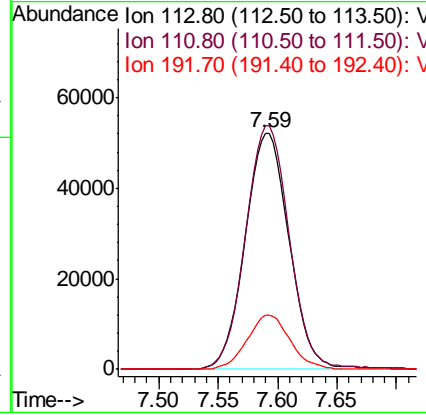
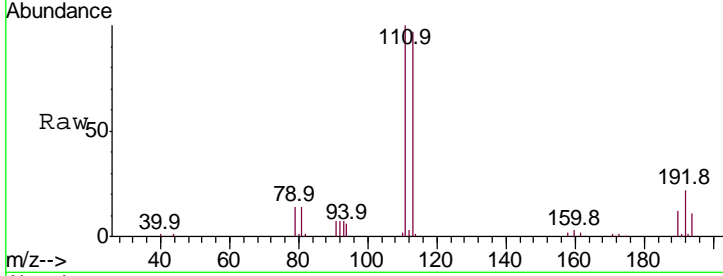




#35  
 Dibromofluoromethane  
 Concen: 47.729 ug/l  
 RT: 7.59 min Scan# 1809  
 Delta R.T. -0.00 min  
 Lab File: VN056846.D  
 Acq: 19 Jul 2019 20:43

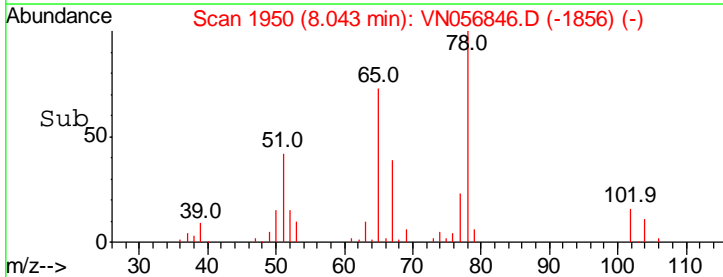
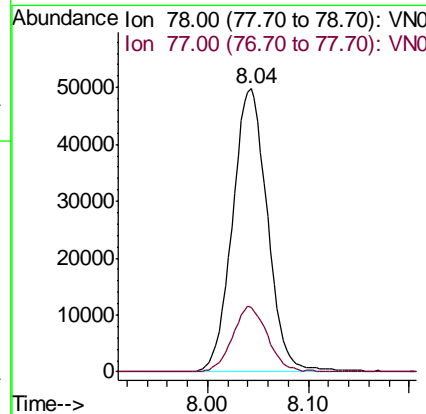
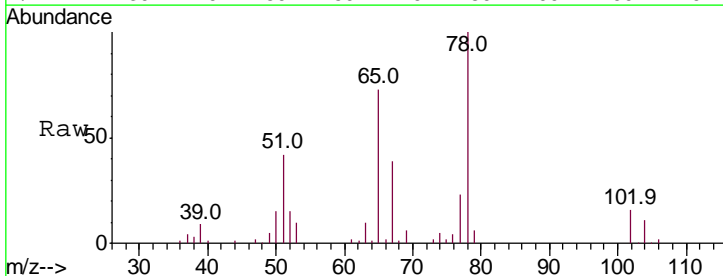
Instrument : MSVOA\_N  
 ClientSampled : AOC-7(1)

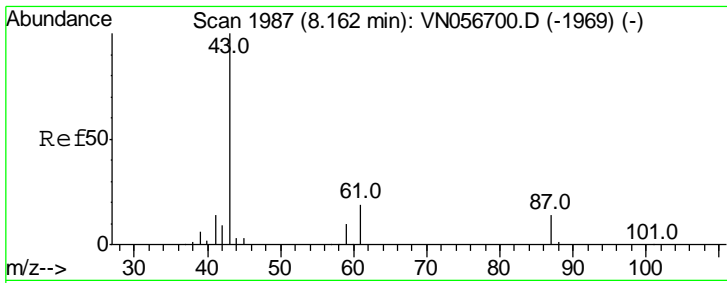
Tgt Ion	Resp	Lower	Upper
113	100		
111	103.7	81.8	122.6
192	22.5	17.5	26.3



#40  
 Benzene  
 Concen: 9.419 ug/l  
 RT: 8.04 min Scan# 1950  
 Delta R.T. 0.00 min  
 Lab File: VN056846.D  
 Acq: 19 Jul 2019 20:43

Tgt Ion	Resp	Lower	Upper
78	100		
77	23.0	18.6	27.8

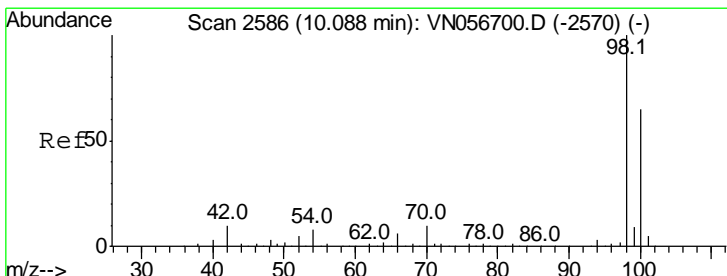
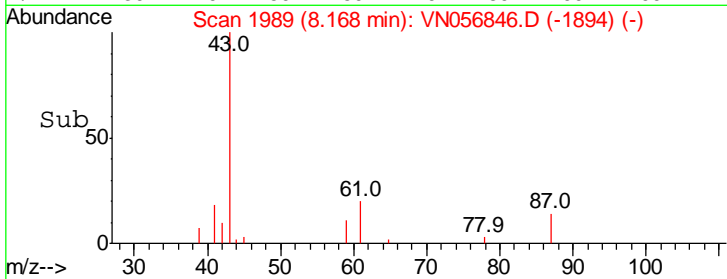
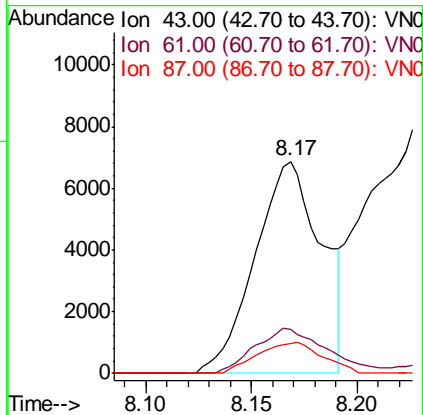
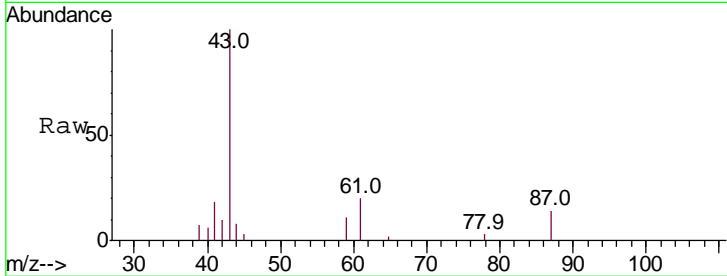




#43  
 Isopropyl Acetate  
 Concen: 2.328 ug/l  
 RT: 8.17 min Scan# 1989  
 Delta R.T. 0.01 min  
 Lab File: VN056846.D  
 Acq: 19 Jul 2019 20:43

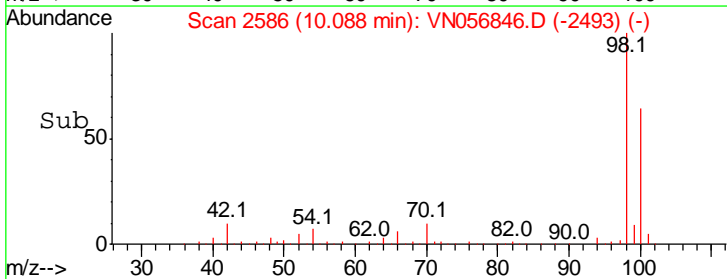
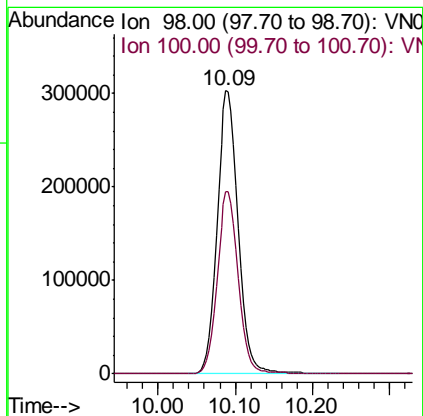
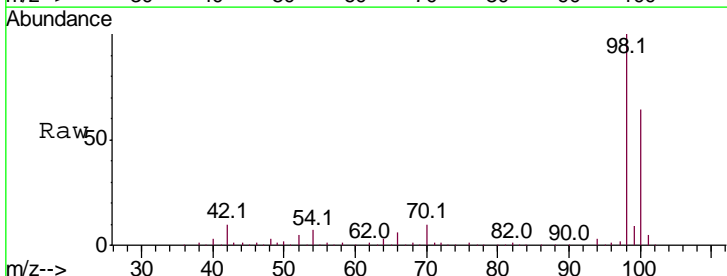
Instrument : MSVOA\_N  
 ClientSampled : AOC-7(1)

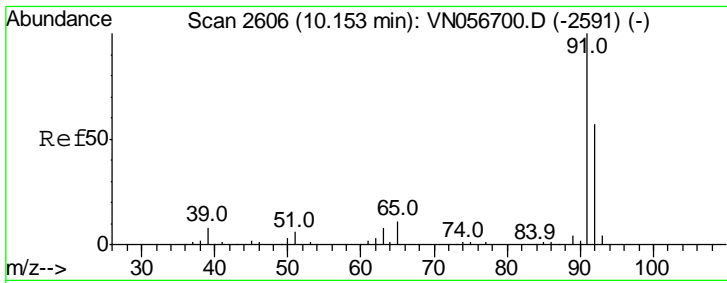
Tgt Ion	Resp	Lower	Upper
43	14950		
61	23.1	22.3	33.5
87	14.4	11.1	16.7



#50  
 Toluene-d8  
 Concen: 53.720 ug/l  
 RT: 10.09 min Scan# 2586  
 Delta R.T. -0.00 min  
 Lab File: VN056846.D  
 Acq: 19 Jul 2019 20:43

Tgt Ion	Resp	Lower	Upper
98	578200		
100	64.3	52.0	78.0

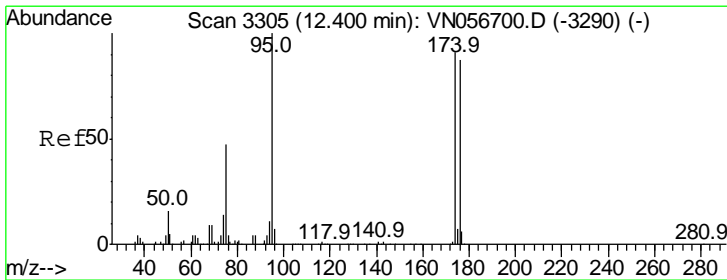
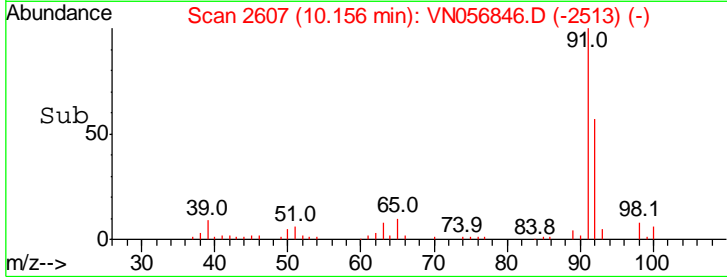
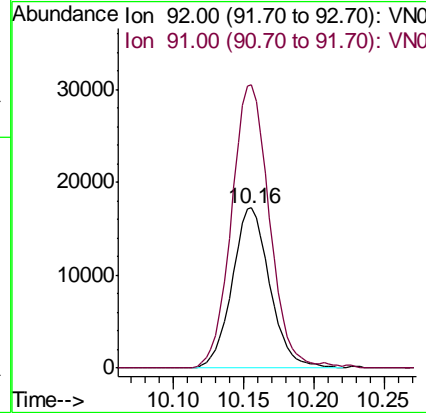
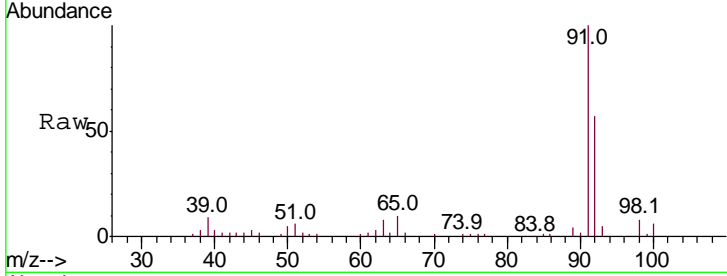




#52  
 Toluene  
 Concen: 4.284 ug/l  
 RT: 10.16 min Scan# 2607  
 Delta R.T. 0.00 min  
 Lab File: VN056846.D  
 Acq: 19 Jul 2019 20:43

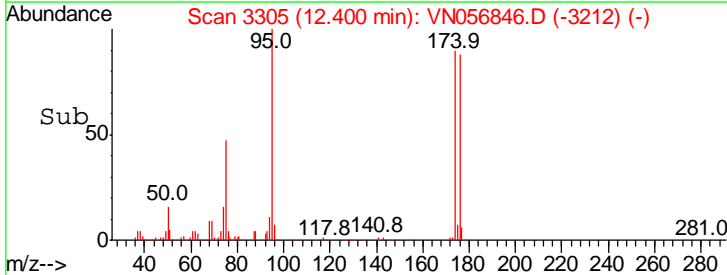
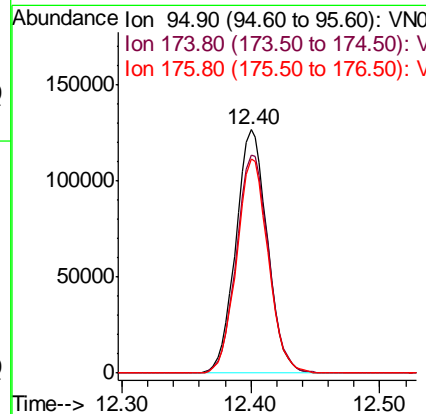
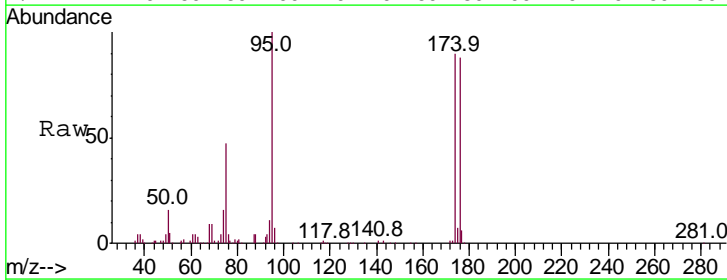
Instrument : MSVOA\_N  
 ClientSampled : AOC-7(1)

Tgt Ion	Resp	Lower	Upper
92	32302		
92	100		
91	178.6	139.9	209.9

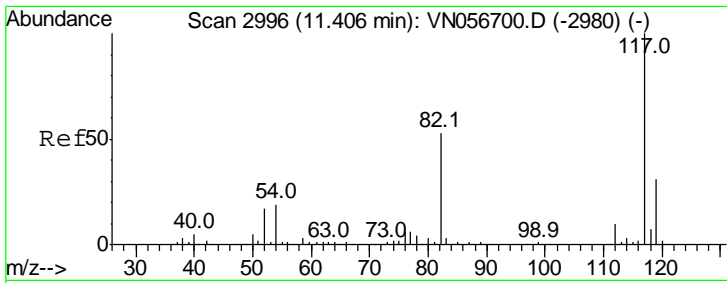


#62  
 4-Bromofluorobenzene  
 Concen: 59.243 ug/l  
 RT: 12.40 min Scan# 3305  
 Delta R.T. -0.00 min  
 Lab File: VN056846.D  
 Acq: 19 Jul 2019 20:43

Tgt Ion	Resp	Lower	Upper
95	215035		
95	100		
174	91.3	0.0	180.0
176	87.9	0.0	173.2



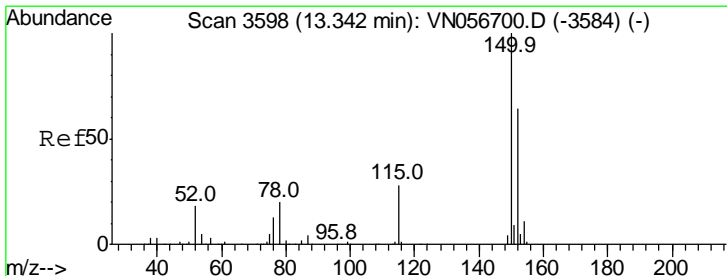
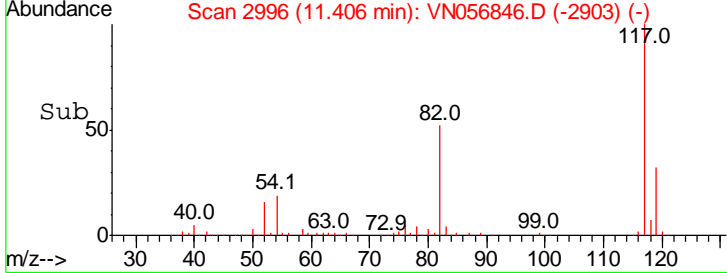
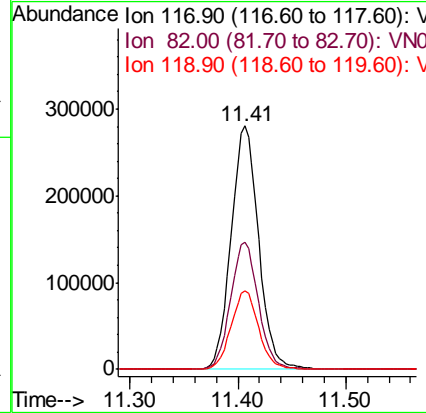
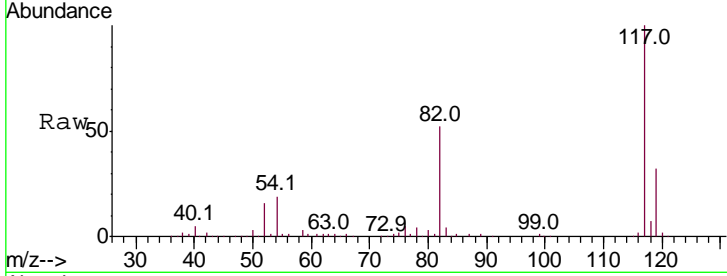




#63  
 Chlorobenzene-d5  
 Concen: 50.000 ug/l  
 RT: 11.41 min Scan# 2996  
 Delta R.T. -0.00 min  
 Lab File: VN056846.D  
 Acq: 19 Jul 2019 20:43

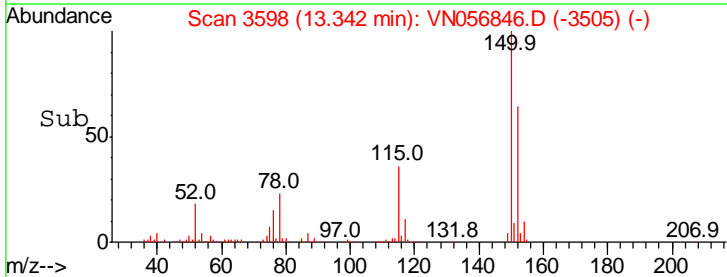
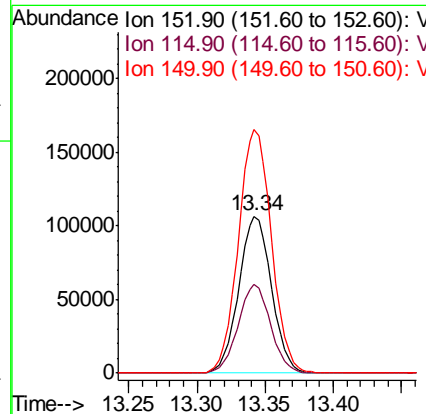
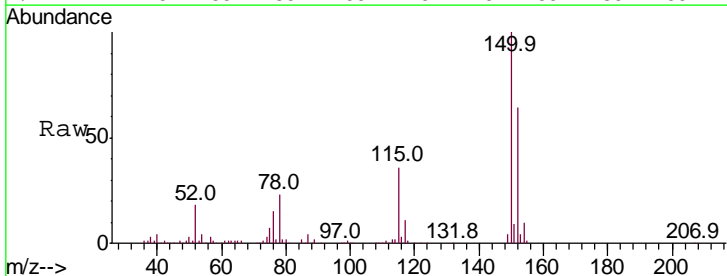
Instrument :  
 MSVOA\_N  
 ClientSampled :  
 AOC-7(1)

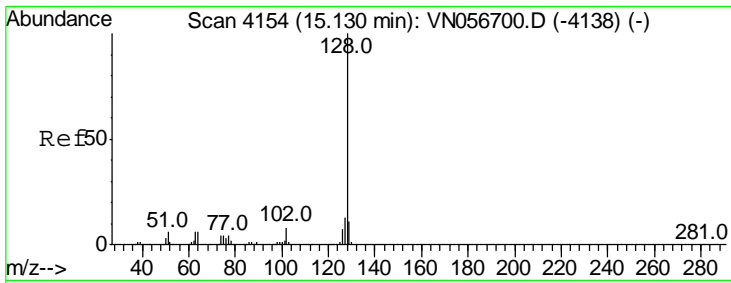
Tgt Ion	Resp	Lower	Upper
117	100		
82	52.4	42.2	63.2
119	32.4	25.2	37.8



#72  
 1,4-Dichlorobenzene-d4  
 Concen: 50.000 ug/l  
 RT: 13.34 min Scan# 3598  
 Delta R.T. -0.00 min  
 Lab File: VN056846.D  
 Acq: 19 Jul 2019 20:43

Tgt Ion	Resp	Lower	Upper
152	100		
115	55.9	28.2	84.7
150	157.2	0.0	345.8





#95  
 Naphthalene  
 Concen: 4.792 ug/l  
 RT: 15.13 min Scan# 4155  
 Delta R.T. 0.00 min  
 Lab File: VN056846.D  
 Acq: 19 Jul 2019 20:43

Instrument : MSVOA\_N  
 ClientSampled : AOC-7(1)

Tot Ion: 128 Resp: 2776

Ion	Ratio	Lower	Upper
128	100		
127	4.9	10.3	15.5#
129	0.0	8.7	13.1#

