

Data Path : Z:\voasrv\HPCHEM1\MSVOA\_N\Data\VN071921\  
 Data File : VN067807.D  
 Acq On : 19 Jul 2021 20:53  
 Operator : JC/MD  
 Sample : M3089-05  
 Misc : 5.00mL/MSVOA\_N/WATER  
 ALS Vial : 23 Sample Multiplier: 1

Instrument :  
 MSVOA\_N  
 ClientSampleId :  
 PAR-N2-A-BOTTOM-(12)

Manual Integrations  
 APPROVED

MMDadoda  
 7/20/2021 5:39:43 PM

Quant Time: Jul 20 04:55:20 2021  
 Quant Method : Z:\voasrv\HPCHEM1\MSVOA\_N\methods\82N070721W.M  
 Quant Title : SW846 8260  
 QLast Update : Wed Jul 07 16:18:53 2021  
 Response via : Initial Calibration

Compound	R.T.	QIon	Response	Conc	Units	Dev(Min)
-----						
Internal Standards						
1) Pentafluorobenzene	8.088	168	302553	50.000	ug/l	0.00
34) 1,4-Difluorobenzene	8.971	114	580273	50.000	ug/l	0.00
63) Chlorobenzene-d5	11.749	117	601934	50.000	ug/l	0.00
72) 1,4-Dichlorobenzene-d4	13.677	152	225628	50.000	ug/l	0.00
System Monitoring Compounds						
33) 1,2-Dichloroethane-d4	8.440	65	241069	52.721	ug/l	0.00
Spiked Amount	50.000	Range 61 - 141	Recovery	=	105.440%	
35) Dibromofluoromethane	8.024	113	176966	50.477	ug/l	0.00
Spiked Amount	50.000	Range 69 - 133	Recovery	=	100.960%	
50) Toluene-d8	10.443	98	762862	51.985	ug/l	0.00
Spiked Amount	50.000	Range 65 - 126	Recovery	=	103.960%	
62) 4-Bromofluorobenzene	12.733	95	261789	50.500	ug/l	0.00
Spiked Amount	50.000	Range 58 - 135	Recovery	=	101.000%	
Target Compounds						
						Qvalue
16) Acetone	4.293	43	37148	25.819	ug/l	98
18) Methyl Acetate	4.856	43	8275m	2.048	ug/l	
20) Methylene Chloride	5.098	84	33089	9.285	ug/l	88
43) Isopropyl Acetate	8.563	43	32754	3.565	ug/l #	86
-----						

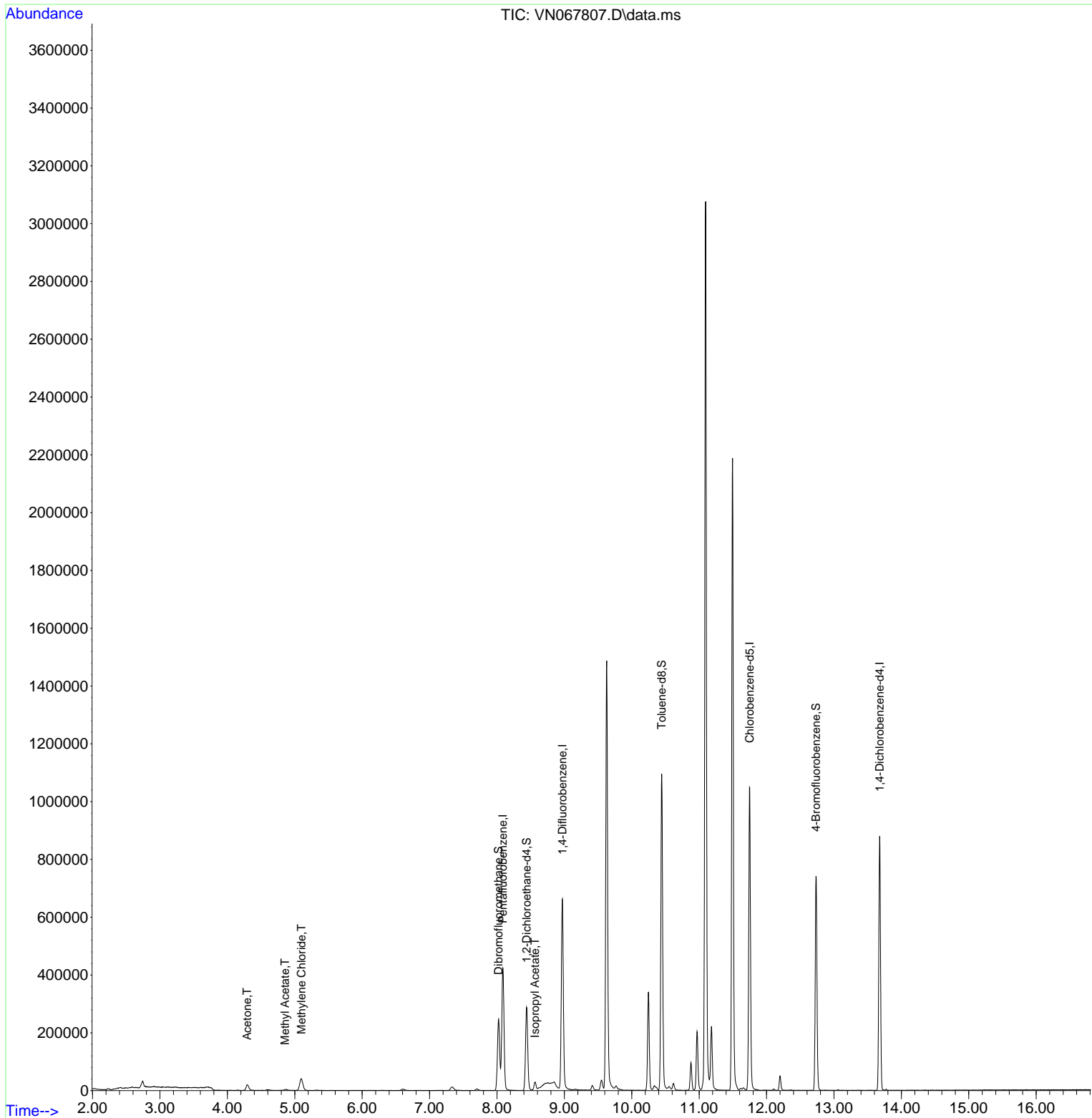
(#) = qualifier out of range (m) = manual integration (+) = signals summed

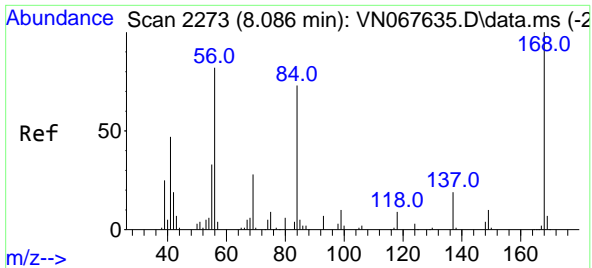
Data Path : Z:\voasrv\HPCHEM1\MSVOA\_N\Data\VN071921\  
 Data File : VN067807.D  
 Acq On : 19 Jul 2021 20:53  
 Operator : JC/MD  
 Sample : M3089-05  
 Misc : 5.00mL/MSVOA\_N/WATER  
 ALS Vial : 23 Sample Multiplier: 1

**Instrument :**  
 MSVOA\_N  
**Client Sampled :**  
 PAR-N2-A-BOTTOM-(12)

**Manual Integrations**  
**APPROVED**  
 MMDadoda  
 7/20/2021 5:39:43 PM

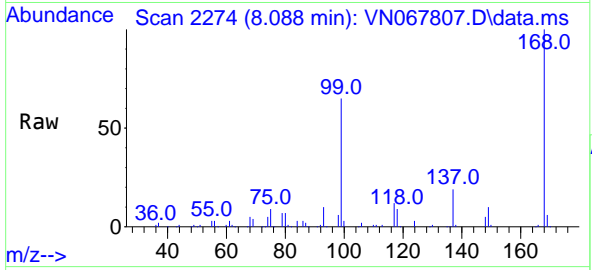
Quant Time: Jul 20 04:55:20 2021  
 Quant Method : Z:\voasrv\HPCHEM1\MSVOA\_N\methods\82N070721W.M  
 Quant Title : SW846 8260  
 QLast Update : Wed Jul 07 16:18:53 2021  
 Response via : Initial Calibration





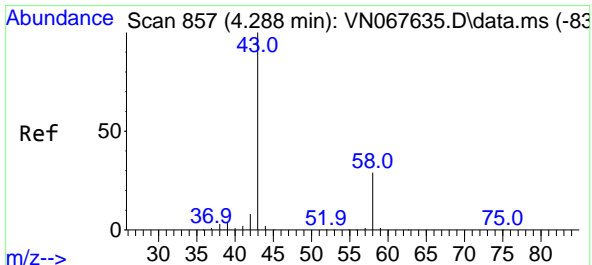
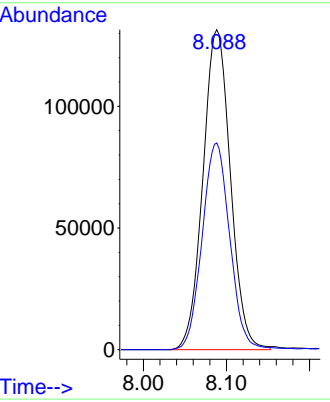
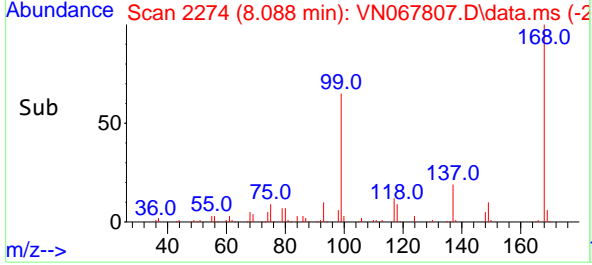
#1  
 Pentafluorobenzene  
 Concen: 50.000 ug/l  
 RT: 8.088 min Scan# 2274  
 Delta R.T. 0.002 min  
 Lab File: VN067807.D  
 Acq: 19 Jul 2021 20:53

Instrument :  
 MSVOA\_N  
 ClientSampled :  
 PAR-N2-A-BOTTOM-(12)

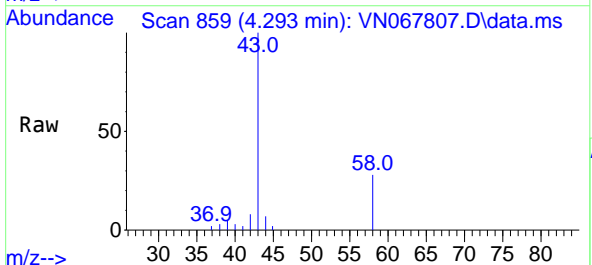


Tgt Ion:168 Resp: 302553  
 Ion Ratio Lower Upper  
 168 100  
 99 64.6 62.9 94.3

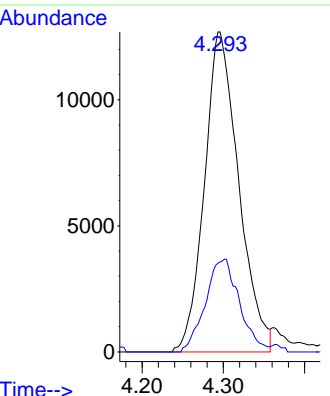
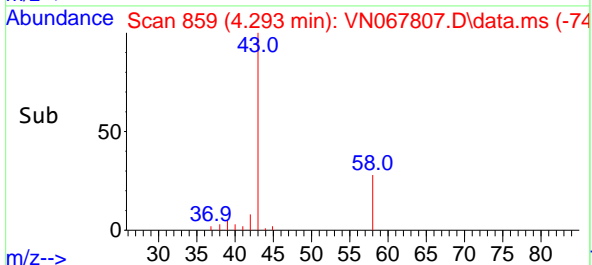
Manual Integrations  
**APPROVED**  
 MMDadoda  
 7/20/2021 5:39:43 PM

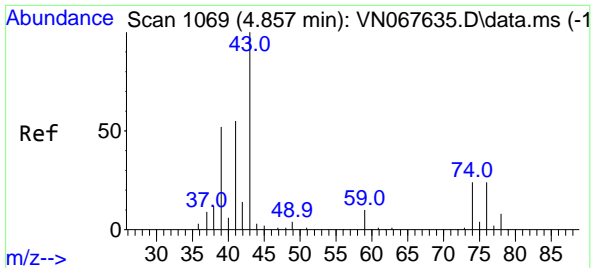


#16  
 Acetone  
 Concen: 25.819 ug/l  
 RT: 4.293 min Scan# 859  
 Delta R.T. 0.005 min  
 Lab File: VN067807.D  
 Acq: 19 Jul 2021 20:53



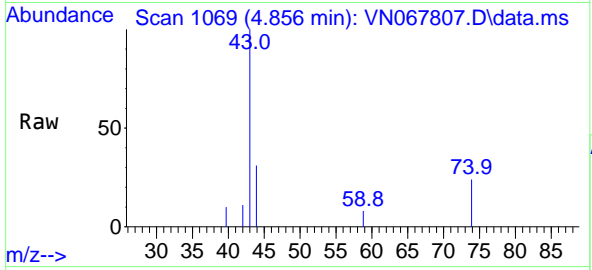
Tgt Ion: 43 Resp: 37148  
 Ion Ratio Lower Upper  
 43 100  
 58 27.7 21.2 31.8





#18  
 Methyl Acetate  
 Concen: 2.048 ug/l m  
 RT: 4.856 min Scan# 1069  
 Delta R.T. -0.001 min  
 Lab File: VN067807.D  
 Acq: 19 Jul 2021 20:53

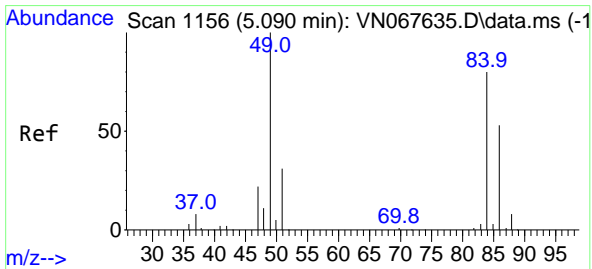
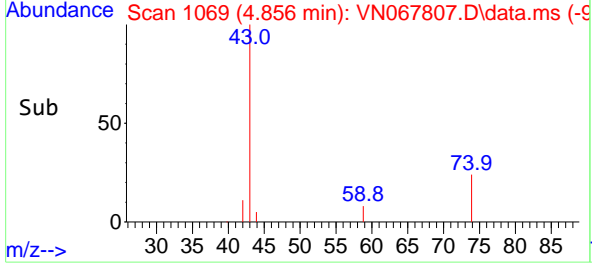
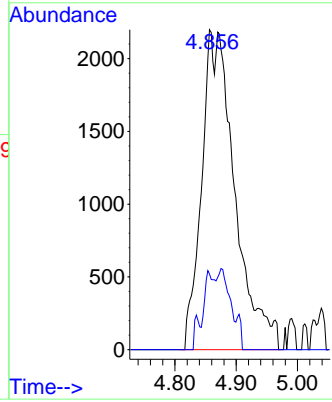
**Instrument :**  
 MSVOA\_N  
**ClientSampled :**  
 PAR-N2-A-BOTTOM-(12)



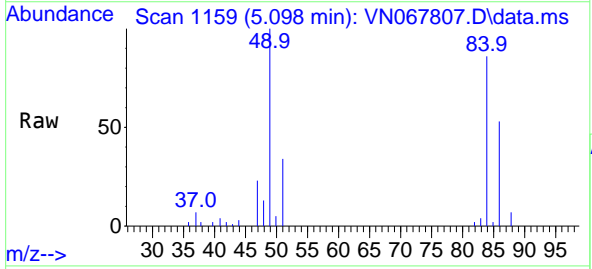
Tgt Ion: 43 Resp: 8275

Ion	Ratio	Lower	Upper
43	100		
74	3.9	17.4	26.0#

**Manual Integrations**  
**APPROVED**  
 MMDadoda  
 7/20/2021 5:39:43 PM

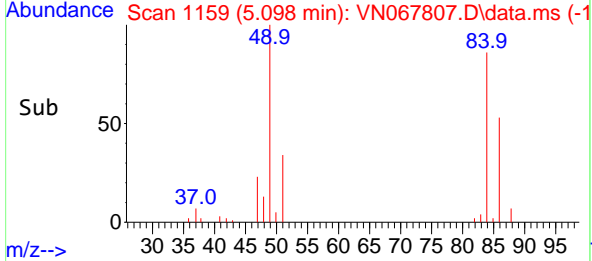
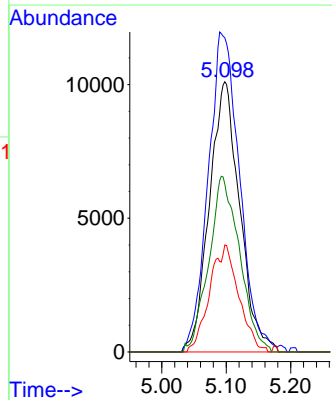


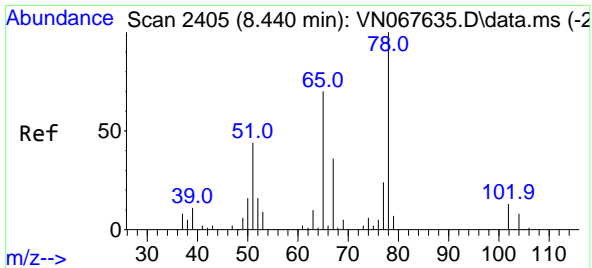
#20  
 Methylene Chloride  
 Concen: 9.285 ug/l  
 RT: 5.098 min Scan# 1159  
 Delta R.T. 0.008 min  
 Lab File: VN067807.D  
 Acq: 19 Jul 2021 20:53



Tgt Ion: 84 Resp: 33089

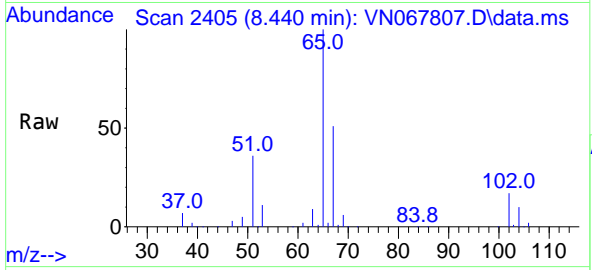
Ion	Ratio	Lower	Upper
84	100		
49	116.2	110.9	166.3
51	39.6	32.6	49.0
86	62.1	51.6	77.4





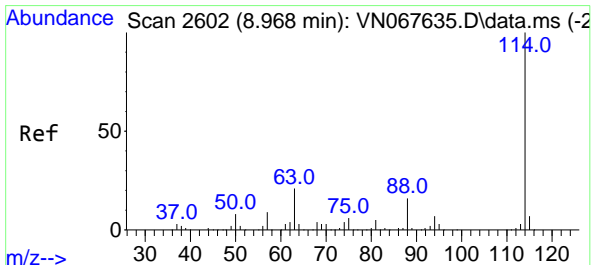
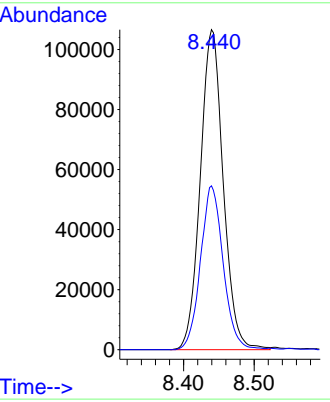
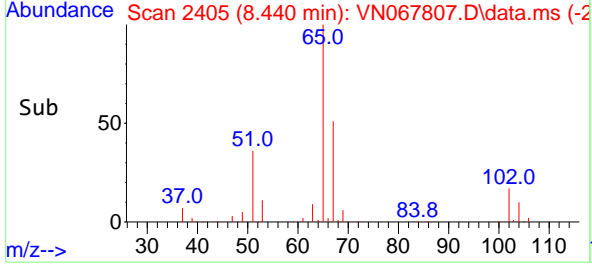
#33  
 1,2-Dichloroethane-d4  
 Concen: 52.721 ug/l  
 RT: 8.440 min Scan# 2405  
 Delta R.T. -0.000 min  
 Lab File: VN067807.D  
 Acq: 19 Jul 2021 20:53

**Instrument :**  
 MSVOA\_N  
**ClientSampled :**  
 PAR-N2-A-BOTTOM-(12)

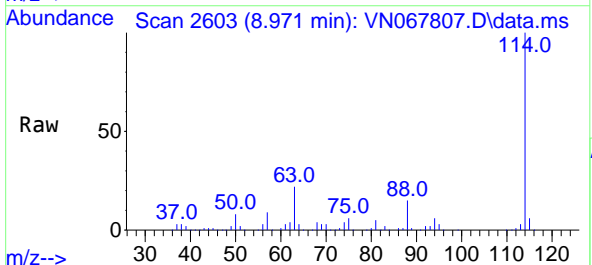


Tgt Ion: 65 Resp: 241069  
 Ion Ratio Lower Upper  
 65 100  
 67 50.6 0.0 98.6

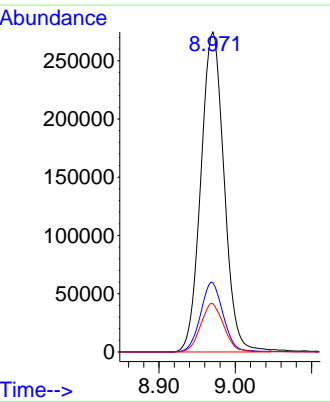
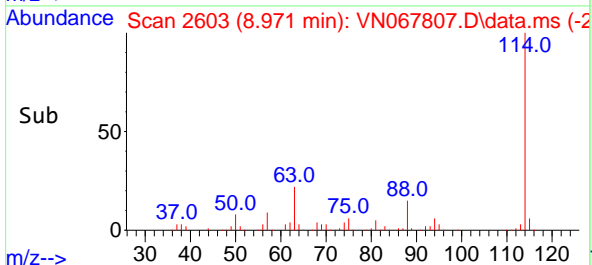
**Manual Integrations**  
**APPROVED**  
 MMDadoda  
 7/20/2021 5:39:43 PM

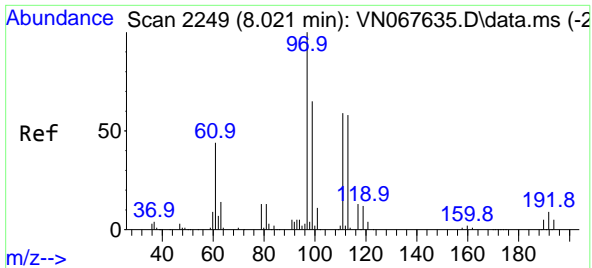


#34  
 1,4-Difluorobenzene  
 Concen: 50.000 ug/l  
 RT: 8.971 min Scan# 2603  
 Delta R.T. 0.003 min  
 Lab File: VN067807.D  
 Acq: 19 Jul 2021 20:53



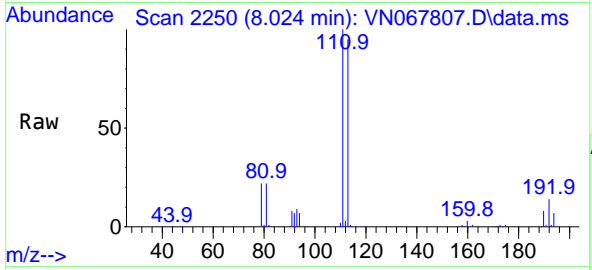
Tgt Ion: 114 Resp: 580273  
 Ion Ratio Lower Upper  
 114 100  
 63 21.6 0.0 49.0  
 88 15.1 0.0 36.6





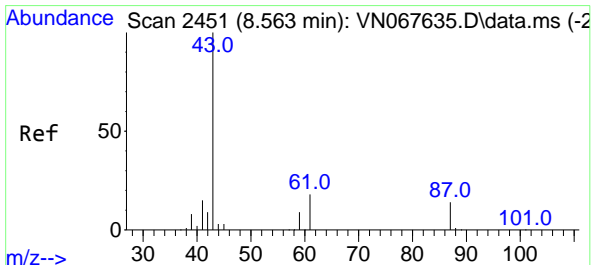
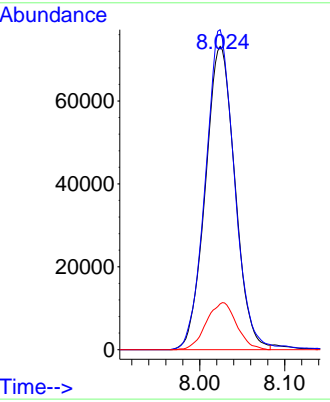
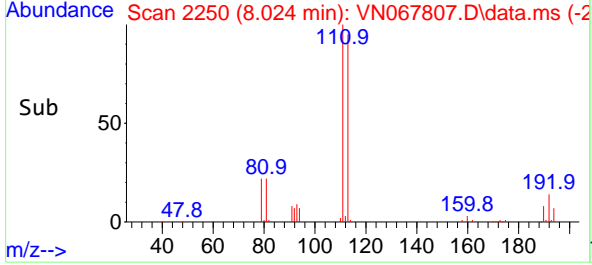
#35  
 Dibromofluoromethane  
 Concen: 50.477 ug/l  
 RT: 8.024 min Scan# 2250  
 Delta R.T. 0.003 min  
 Lab File: VN067807.D  
 Acq: 19 Jul 2021 20:53

**Instrument :**  
 MSVOA\_N  
**ClientSampled :**  
 PAR-N2-A-BOTTOM-(12)

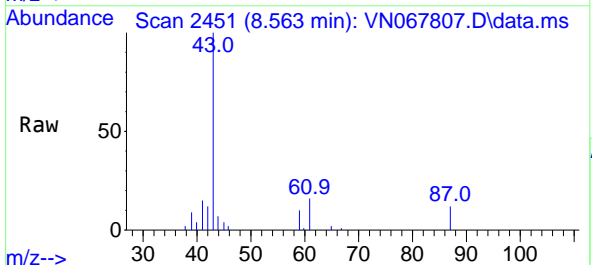


Tgt Ion:113 Resp: 176966  
 Ion Ratio Lower Upper  
 113 100  
 111 103.3 83.8 125.8  
 192 15.9 13.4 20.0

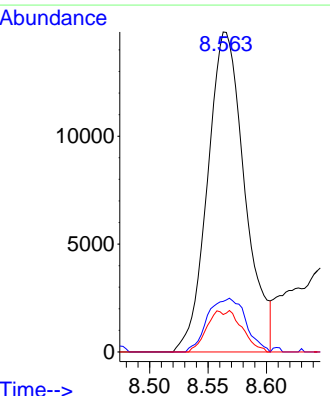
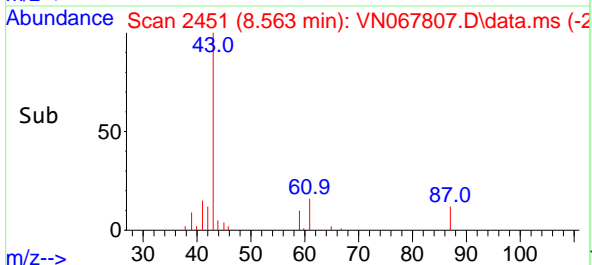
**Manual Integrations**  
**APPROVED**  
 MMDadoda  
 7/20/2021 5:39:43 PM

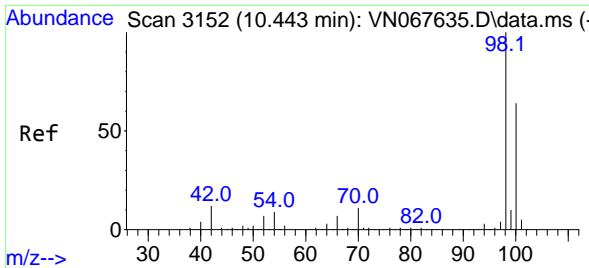


#43  
 Isopropyl Acetate  
 Concen: 3.565 ug/l  
 RT: 8.563 min Scan# 2451  
 Delta R.T. -0.000 min  
 Lab File: VN067807.D  
 Acq: 19 Jul 2021 20:53



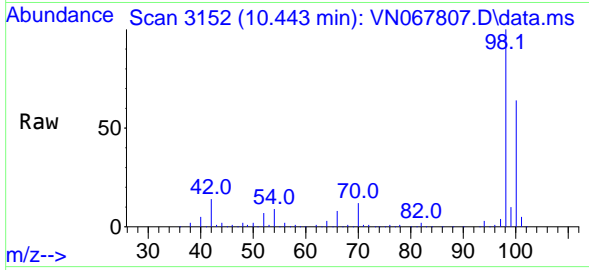
Tgt Ion: 43 Resp: 32754  
 Ion Ratio Lower Upper  
 43 100  
 61 17.3 19.0 28.4#  
 87 6.0 9.5 14.3#





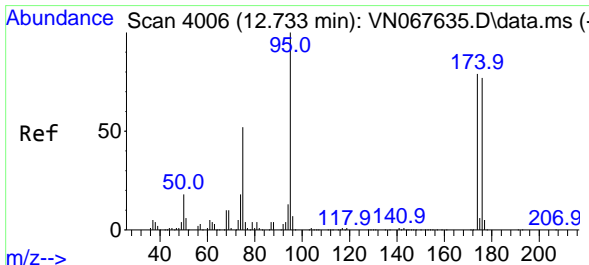
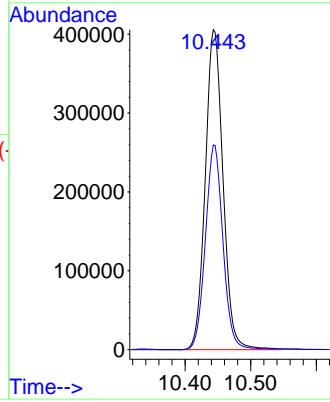
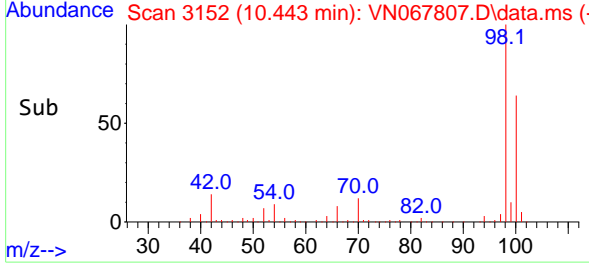
#50  
 Toluene-d8  
 Concen: 51.985 ug/l  
 RT: 10.443 min Scan# 3152  
 Delta R.T. -0.000 min  
 Lab File: VN067807.D  
 Acq: 19 Jul 2021 20:53

**Instrument :**  
 MSVOA\_N  
**ClientSampled :**  
 PAR-N2-A-BOTTOM-(12)

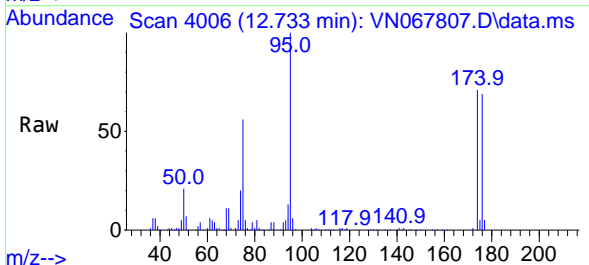


Tgt Ion: 98 Resp: 762862  
 Ion Ratio Lower Upper  
 98 100  
 100 63.3 51.7 77.5

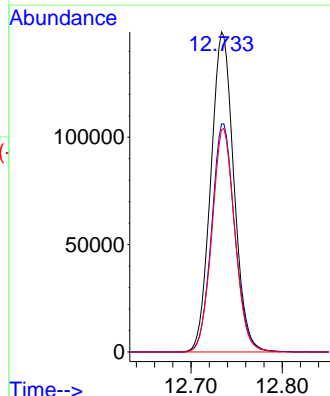
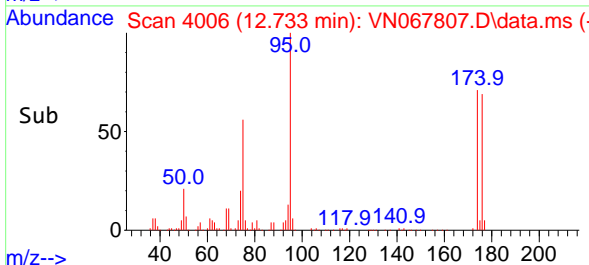
**Manual Integrations**  
**APPROVED**  
 MMDadoda  
 7/20/2021 5:39:43 PM

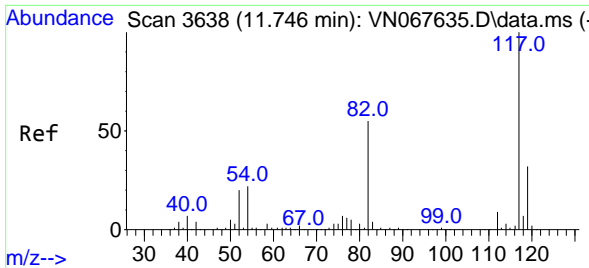


#62  
 4-Bromofluorobenzene  
 Concen: 50.500 ug/l  
 RT: 12.733 min Scan# 4006  
 Delta R.T. 0.000 min  
 Lab File: VN067807.D  
 Acq: 19 Jul 2021 20:53



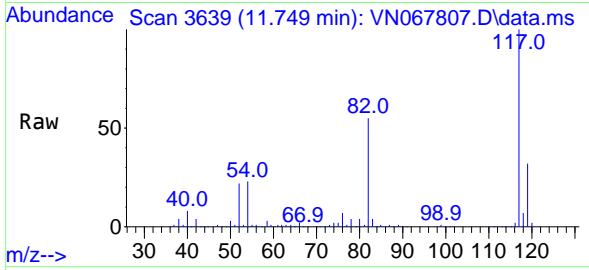
Tgt Ion: 95 Resp: 261789  
 Ion Ratio Lower Upper  
 95 100  
 174 71.6 0.0 122.0  
 176 69.2 0.0 117.6





#63  
 Chlorobenzene-d5  
 Concen: 50.000 ug/l  
 RT: 11.749 min Scan# 3639  
 Delta R.T. 0.003 min  
 Lab File: VN067807.D  
 Acq: 19 Jul 2021 20:53

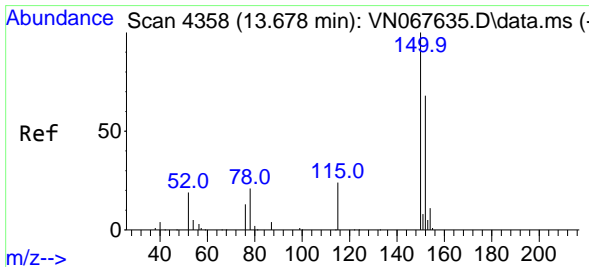
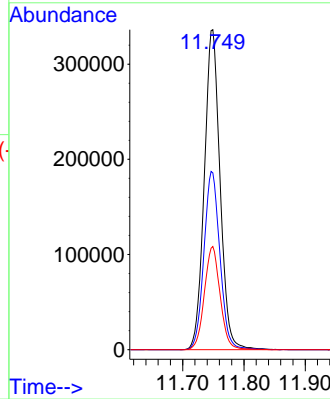
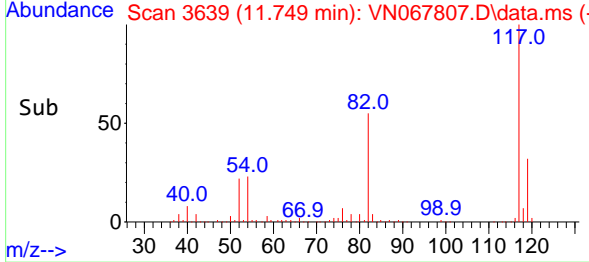
Instrument :  
 MSVOA\_N  
 ClientSampleId :  
 PAR-N2-A-BOTTOM-(12)



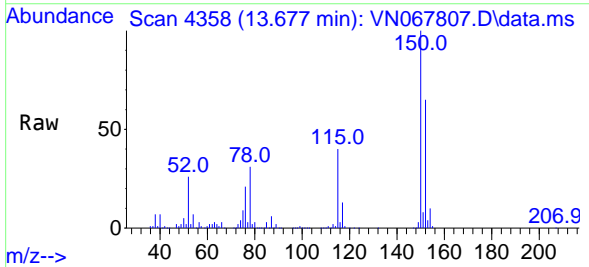
Tgt Ion:117 Resp: 601934  
 Ion Ratio Lower Upper  
 117 100  
 82 55.2 53.1 79.7  
 119 32.2 25.5 38.3

Manual Integrations  
 APPROVED

MMDadoda  
 7/20/2021 5:39:43 PM



#72  
 1,4-Dichlorobenzene-d4  
 Concen: 50.000 ug/l  
 RT: 13.677 min Scan# 4358  
 Delta R.T. -0.000 min  
 Lab File: VN067807.D  
 Acq: 19 Jul 2021 20:53



Tgt Ion:152 Resp: 225628  
 Ion Ratio Lower Upper  
 152 100  
 115 62.8 36.1 108.5  
 150 158.5 0.0 351.8

