

Data Path : Z:\VOASRV\HPCHEM1\MSVOA N\DATA\VN072018\  
 Data File : VN049973.D  
 Acq On : 20 Jul 2018 19:49  
 Operator : MD\SY  
 Sample : J4016-21  
 Misc : 5.00mL/MSVOA N/WATER  
 ALS Vial : 19 Sample Multiplier: 1

Instrument :  
 MSVOA\_N  
 ClientSampleId :  
 SB5-U-23-13

Quant Time: Jul 21 02:29:30 2018  
 Quant Method : Z:\VOASRV\HPCHEM1\MSVOA\_N\METHODS\82N071818W.M  
 Quant Title : SW846 8260  
 QLast Update : Thu Jul 19 01:58:39 2018  
 Response via : Initial Calibration

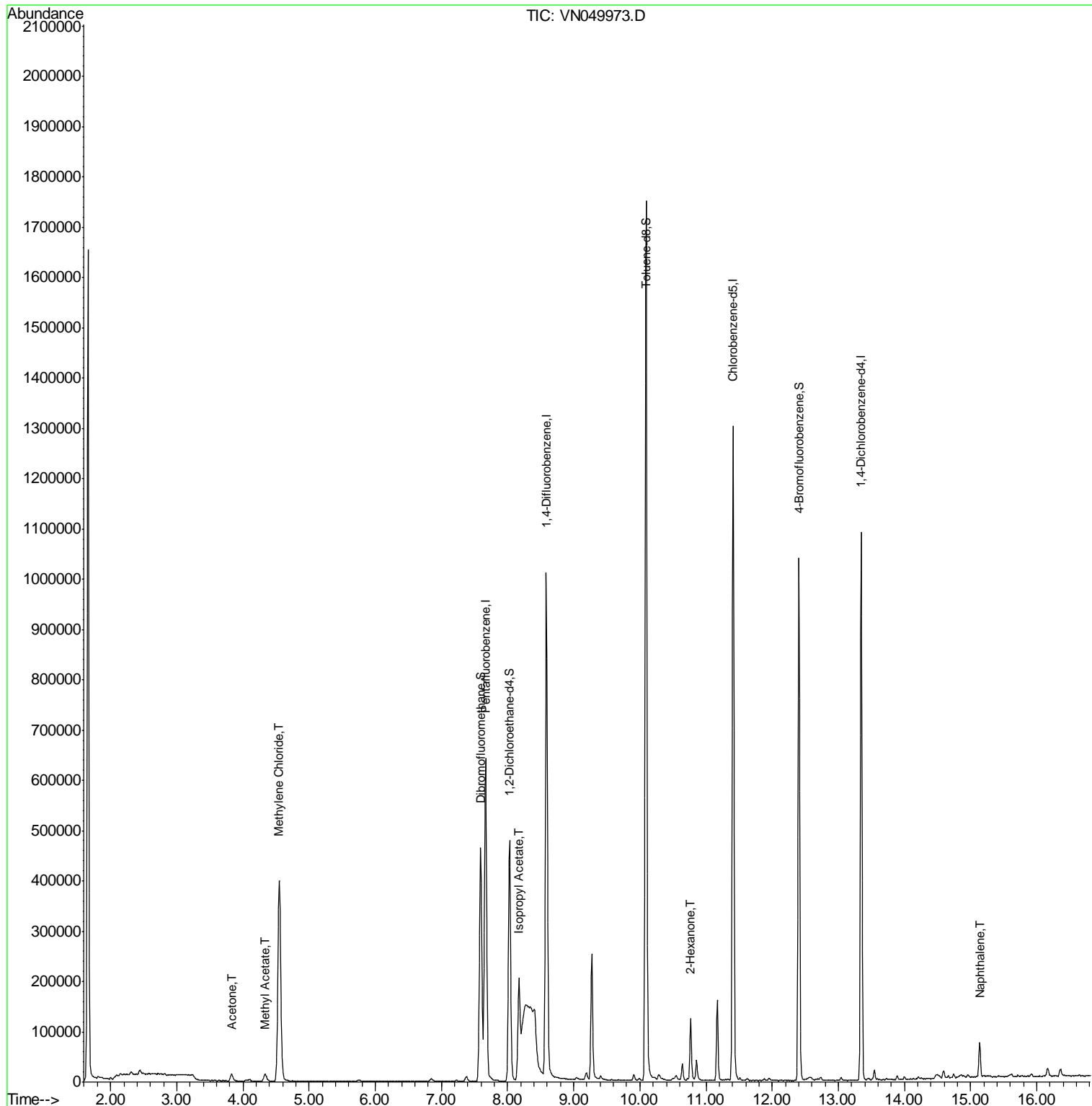
Internal Standards	R.T.	QIon	Response	Conc	Units	Dev(Min)
1) Pentafluorobenzene	7.67	168	549982	50.00	ug/l	0.00
34) 1,4-Difluorobenzene	8.59	114	936344	50.00	ug/l	0.00
63) Chlorobenzene-d5	11.41	117	793052	50.00	ug/l	0.00
72) 1,4-Dichlorobenzene-d4	13.35	152	300309	50.00	ug/l	0.00
System Monitoring Compounds						
33) 1,2-Dichloroethane-d4	8.03	65	405485	53.64	ug/l	0.00
Spiked Amount				50.000		
			Recovery	=		107.28%
35) Dibromofluoromethane	7.59	113	357778	45.51	ug/l	0.00
Spiked Amount				50.000		
			Recovery	=		91.02%
50) Toluene-d8	10.09	98	1247396	43.55	ug/l	0.00
Spiked Amount				50.000		
			Recovery	=		87.10%
62) 4-Bromofluorobenzene	12.40	95	344222	34.90	ug/l	0.00
Spiked Amount				50.000		
			Recovery	=		69.80%
Target Compounds						
						Qvalue
16) Acetone	3.83	43	25336	12.95	ug/l	98
18) Methyl Acetate	4.34	43	28448	3.86	ug/l	98
20) Methylene Chloride	4.55	84	309247	41.55	ug/l	99
43) Isopropyl Acetate	8.17	43	244549	19.58	ug/l	96
59) 2-Hexanone	10.77	43	17602	3.75	ug/l #	58
95) Naphthalene	15.14	128	59716	8.31	ug/l	100

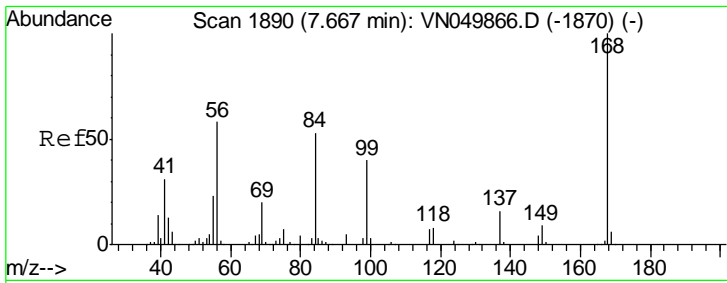
(#) = qualifier out of range (m) = manual integration (+) = signals summed

Data Path : Z:\VOASRV\HPCHEM1\MSVOA N\DATA\VN072018\  
 Data File : VN049973.D  
 Acq On : 20 Jul 2018 19:49  
 Operator : MD\SY  
 Sample : J4016-21  
 Misc : 5.00mL/MSVOA N/WATER  
 ALS Vial : 19 Sample Multiplier: 1

Instrument :  
 MSVOA\_N  
 Client Sample ID :  
 SB5-U-23-13

Quant Time: Jul 21 02:29:30 2018  
 Quant Method : Z:\VOASRV\HPCHEM1\MSVOA\_N\METHODS\82N071818W.M  
 Quant Title : SW846 8260  
 QLast Update : Thu Jul 19 01:58:39 2018  
 Response via : Initial Calibration

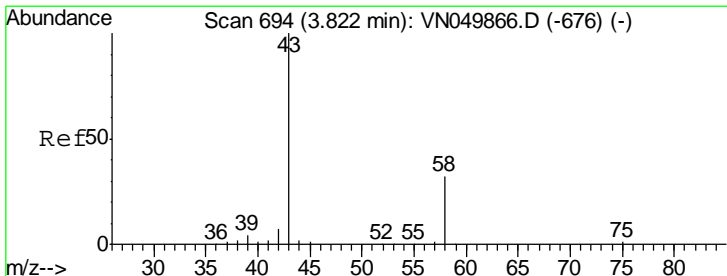
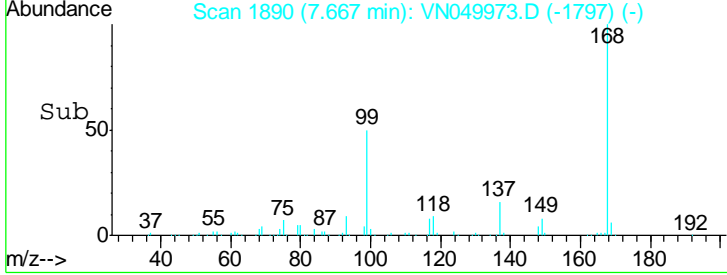
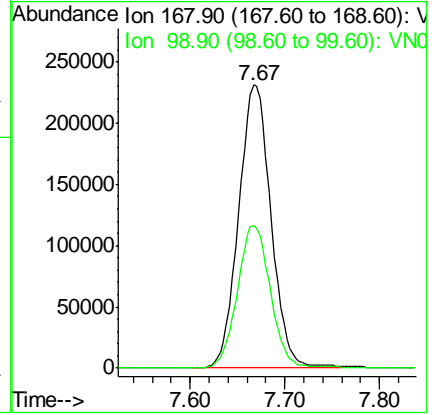
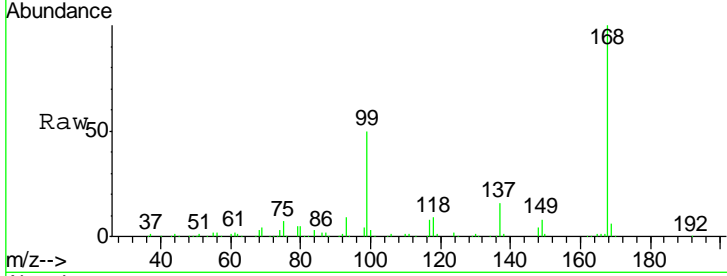




#1  
 Pentafluorobenzene  
 Concen: 50.00 ug/l  
 RT: 7.67 min Scan# 1890  
 Delta R.T. 0.00 min  
 Lab File: VN049973.D  
 Acq: 20 Jul 2018 19:49

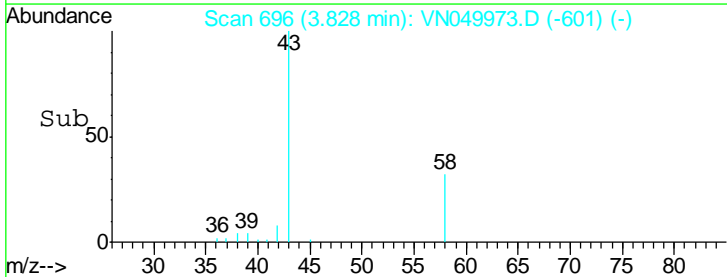
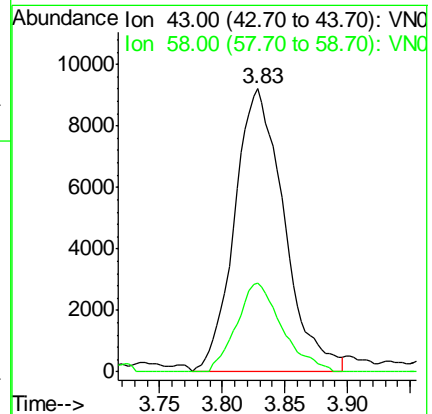
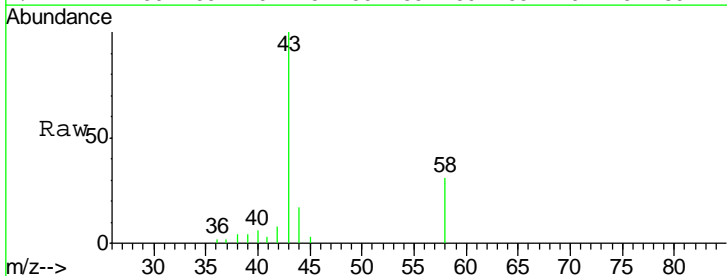
Instrument : MSVOA\_N  
 ClientSampled : SB5-U-23-13

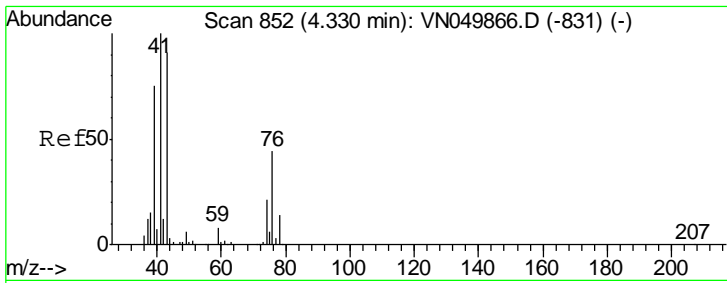
Tot Ion: 168 Resp: 549982  
 Ion Ratio Lower Upper  
 168 100  
 99 50.4 40.6 61.0



#16  
 Acetone  
 Concen: 12.95 ug/l  
 RT: 3.83 min Scan# 696  
 Delta R.T. 0.01 min  
 Lab File: VN049973.D  
 Acq: 20 Jul 2018 19:49

Tgt Ion: 43 Resp: 25336  
 Ion Ratio Lower Upper  
 43 100  
 58 31.3 25.9 38.9

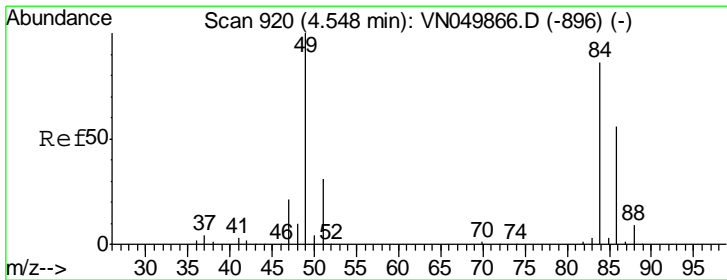
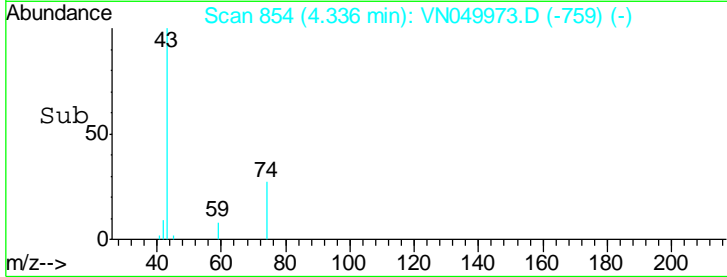
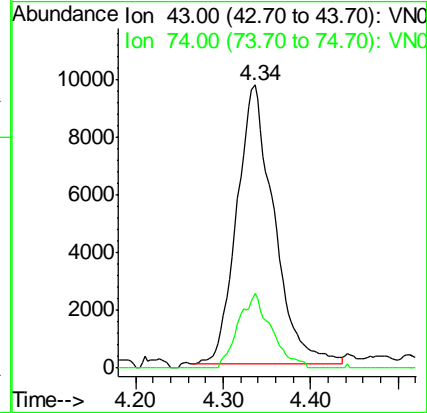
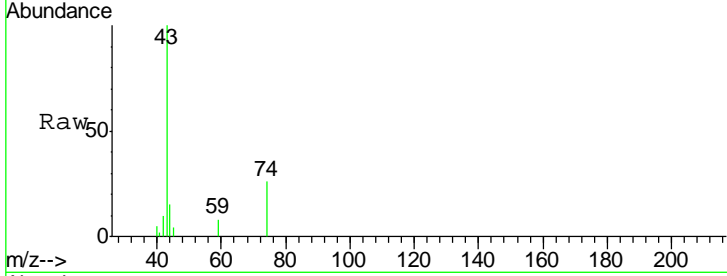




#18  
 Methyl Acetate  
 Concen: 3.86 ug/l  
 RT: 4.34 min Scan# 854  
 Delta R.T. 0.01 min  
 Lab File: VN049973.D  
 Acq: 20 Jul 2018 19:49

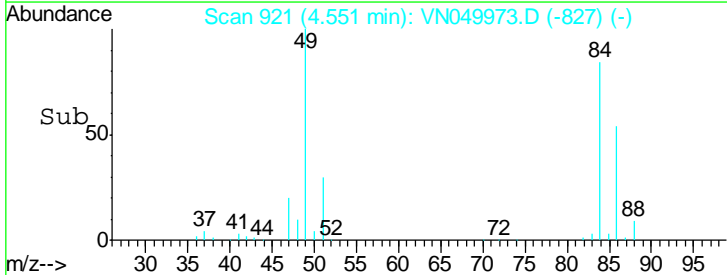
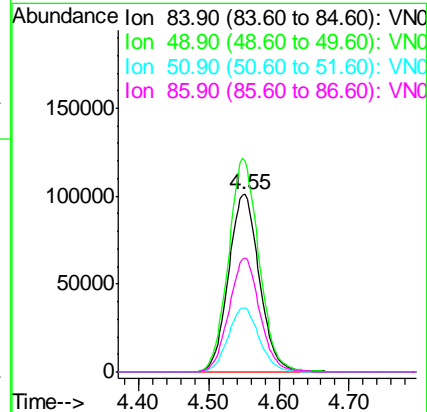
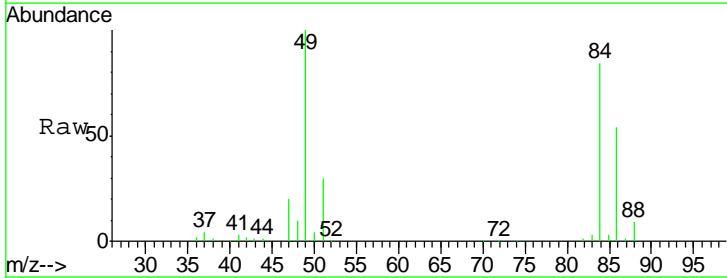
Instrument :  
 MSVOA\_N  
 ClientSampled :  
 SB5-U-23-13

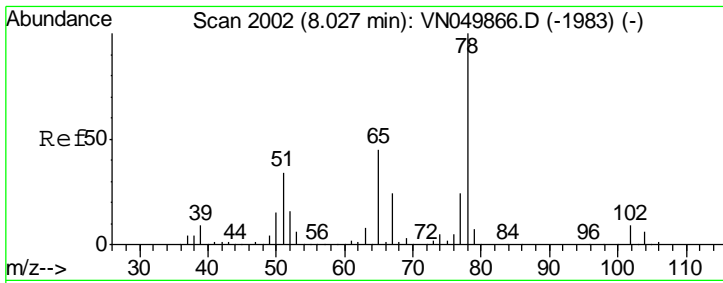
Tgt Ion	Resp	Lower	Upper
43	100		
74	23.8	19.8	29.8



#20  
 Methylene Chloride  
 Concen: 41.55 ug/l  
 RT: 4.55 min Scan# 921  
 Delta R.T. 0.00 min  
 Lab File: VN049973.D  
 Acq: 20 Jul 2018 19:49

Tgt Ion	Resp	Lower	Upper
84	100		
49	118.9	95.4	143.2
51	36.1	28.4	42.6
86	64.5	52.6	79.0

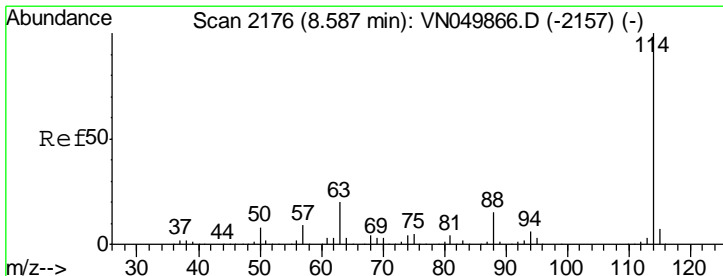
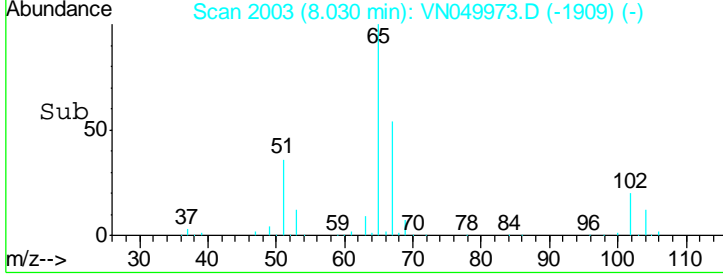
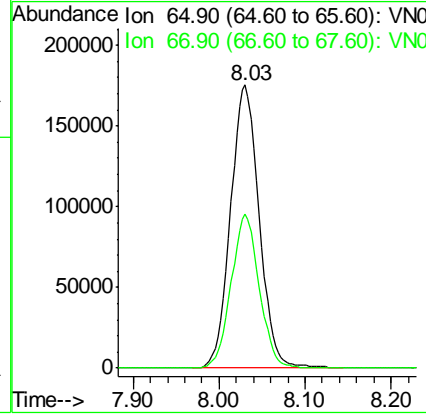
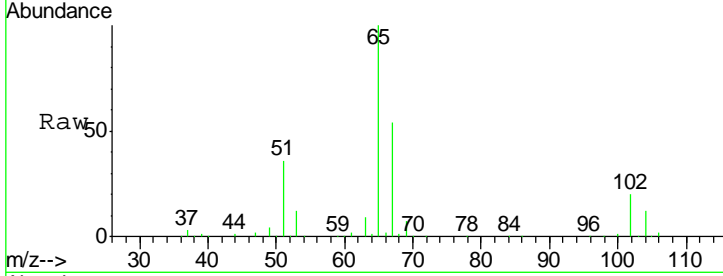




#33  
 1,2-Dichloroethane-d4  
 Concen: 53.64 ug/l  
 RT: 8.03 min Scan# 2003  
 Delta R.T. 0.00 min  
 Lab File: VN049973.D  
 Acq: 20 Jul 2018 19:49

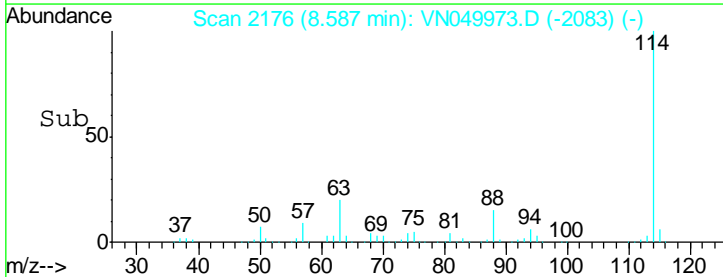
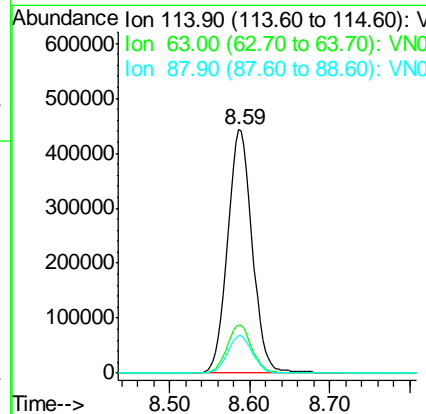
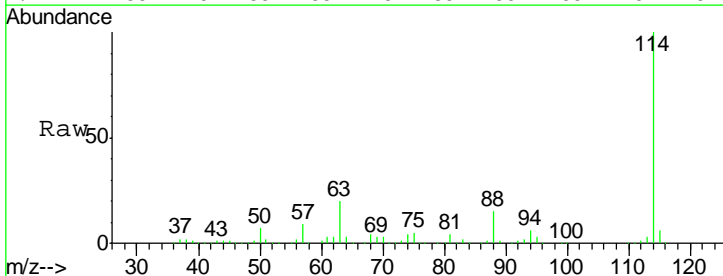
Instrument :  
 MSVOA\_N  
 ClientSampled :  
 SB5-U-23-13

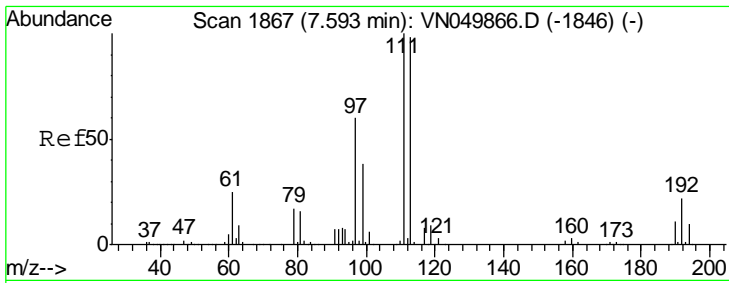
Tot Ion: 65 Resp: 405485  
 Ion Ratio Lower Upper  
 65 100  
 67 53.1 0.0 107.2



#34  
 1,4-Difluorobenzene  
 Concen: 50.00 ug/l  
 RT: 8.59 min Scan# 2176  
 Delta R.T. 0.00 min  
 Lab File: VN049973.D  
 Acq: 20 Jul 2018 19:49

Tgt Ion: 114 Resp: 936344  
 Ion Ratio Lower Upper  
 114 100  
 63 19.7 0.0 39.8  
 88 15.4 0.0 30.6

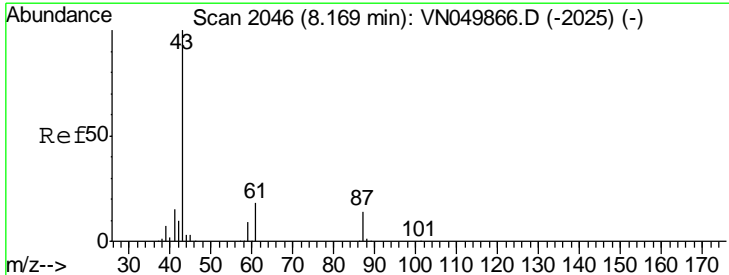
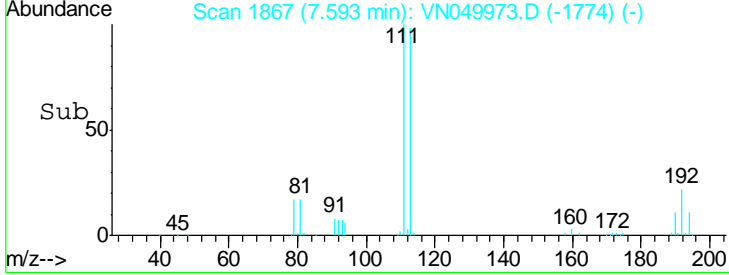
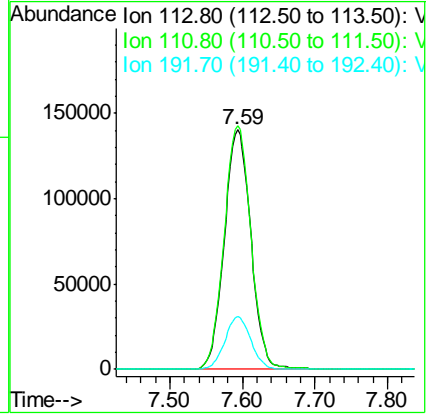
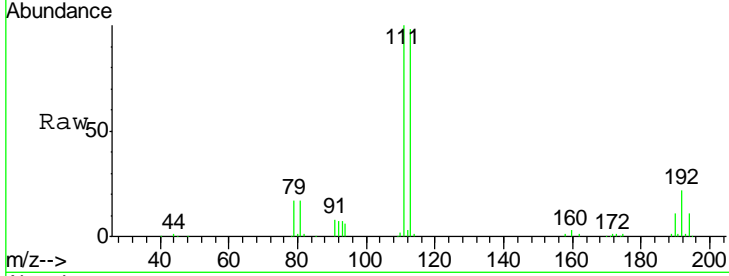




#35  
 Dibromofluoromethane  
 Concen: 45.51 ug/l  
 RT: 7.59 min Scan# 1867  
 Delta R.T. 0.00 min  
 Lab File: VN049973.D  
 Acq: 20 Jul 2018 19:49

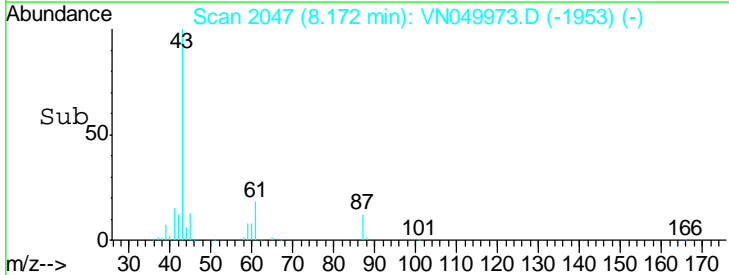
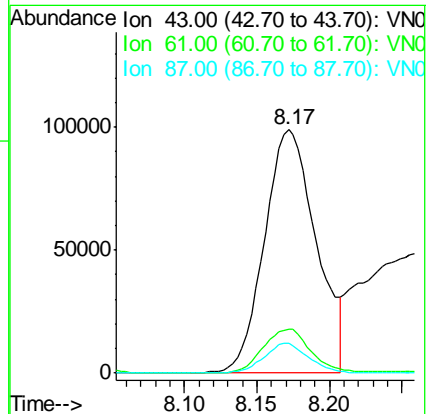
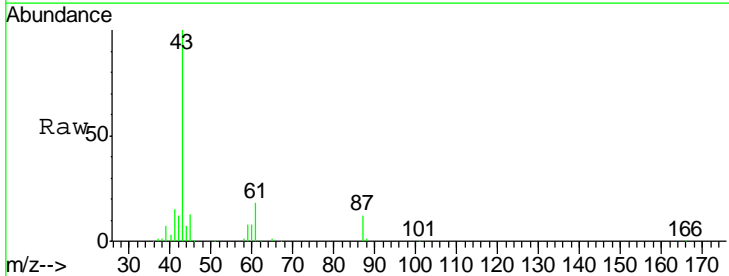
**Instrument :**  
 MSVOA\_N  
**ClientSampled :**  
 SB5-U-23-13

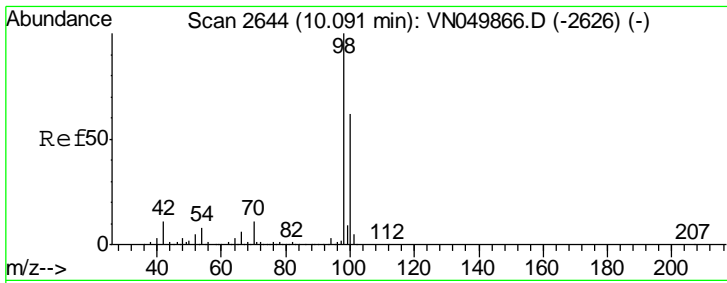
Tgt Ion	Resp	Lower	Upper
113	357778		
111	102.4	81.8	122.8
192	21.4	17.8	26.6



#43  
 Isopropyl Acetate  
 Concen: 19.58 ug/l  
 RT: 8.17 min Scan# 2047  
 Delta R.T. 0.00 min  
 Lab File: VN049973.D  
 Acq: 20 Jul 2018 19:49

Tgt Ion	Resp	Lower	Upper
43	244549		
61	16.7	14.9	22.3
87	10.8	10.0	15.0

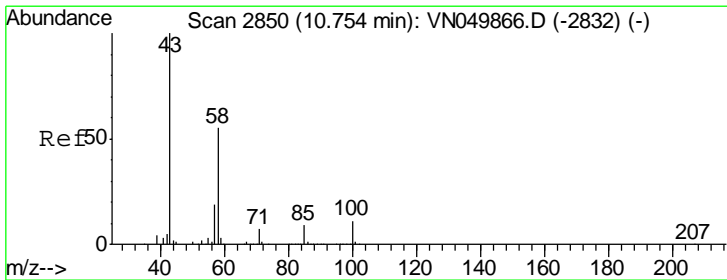
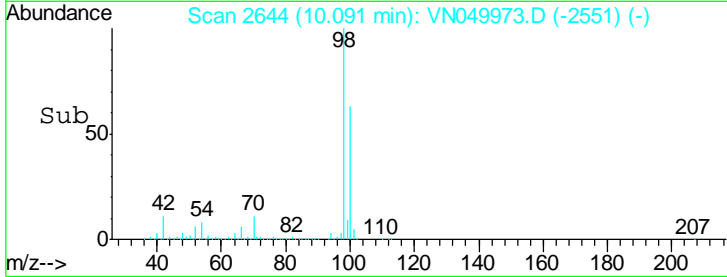
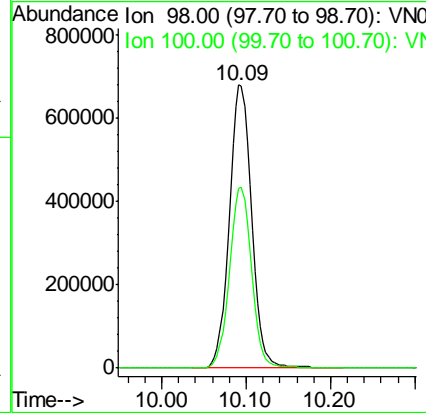
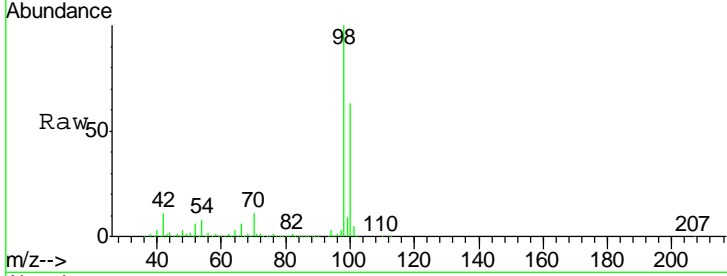




#50  
 Toluene-d8  
 Concen: 43.55 ug/l  
 RT: 10.09 min Scan# 2644  
 Delta R.T. 0.00 min  
 Lab File: VN049973.D  
 Acq: 20 Jul 2018 19:49

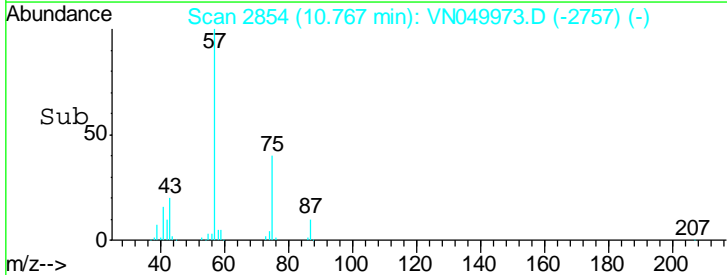
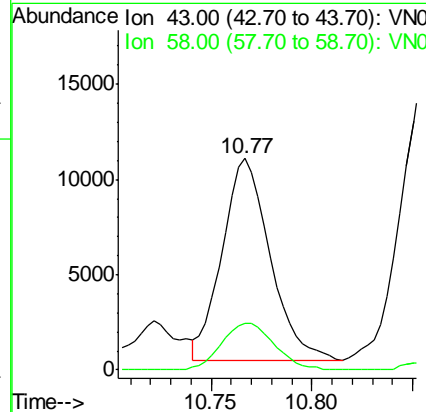
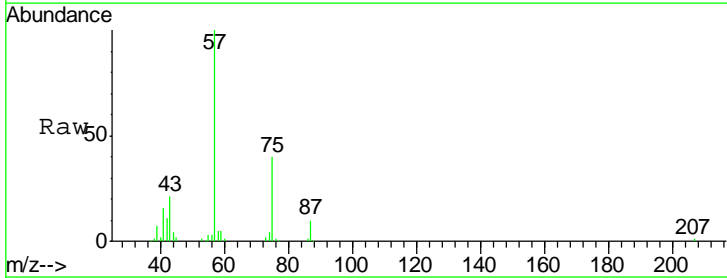
Instrument :  
 MSVOA\_N  
 ClientSampled :  
 SB5-U-23-13

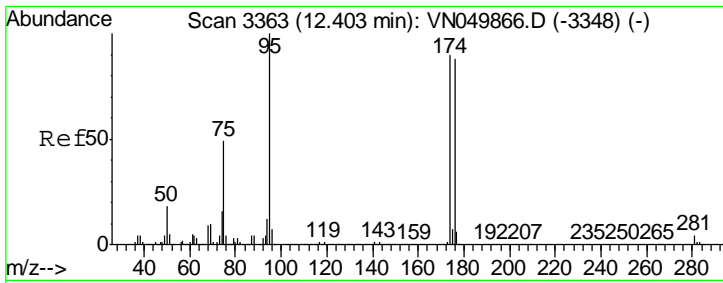
Tgt Ion: 98 Resp: 1247396  
 Ion Ratio Lower Upper  
 98 100  
 100 63.2 51.7 77.5



#59  
 2-Hexanone  
 Concen: 3.75 ug/l  
 RT: 10.77 min Scan# 2854  
 Delta R.T. 0.01 min  
 Lab File: VN049973.D  
 Acq: 20 Jul 2018 19:49

Tgt Ion: 43 Resp: 17602  
 Ion Ratio Lower Upper  
 43 100  
 58 25.3 27.8 83.4#

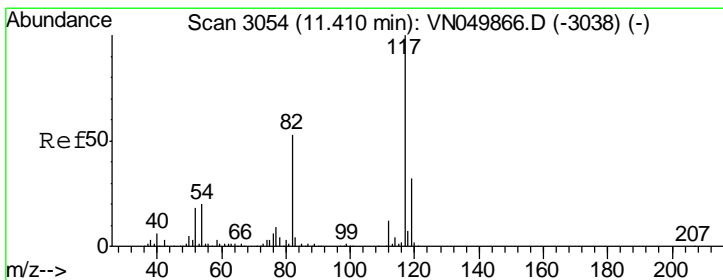
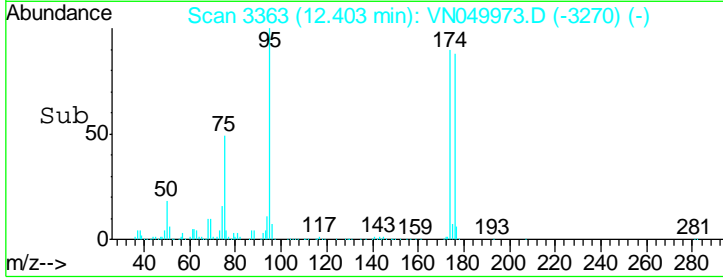
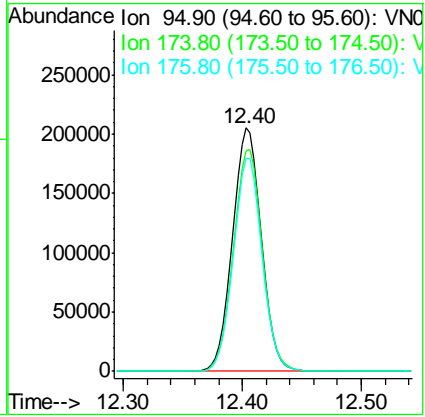
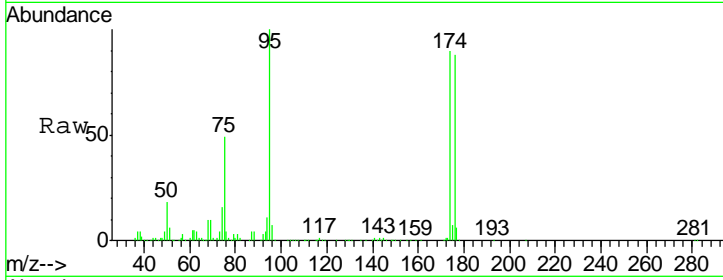




#62  
 4-Bromofluorobenzene  
 Concen: 34.90 ug/l  
 RT: 12.40 min Scan# 3363  
 Delta R.T. 0.00 min  
 Lab File: VN049973.D  
 Acq: 20 Jul 2018 19:49

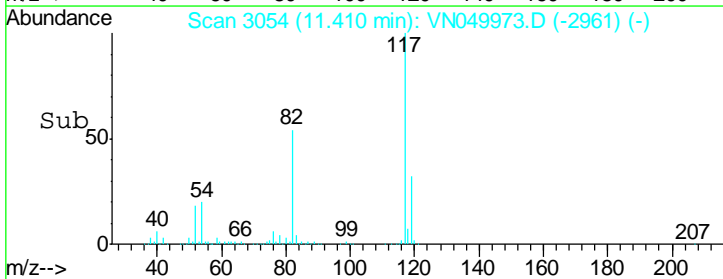
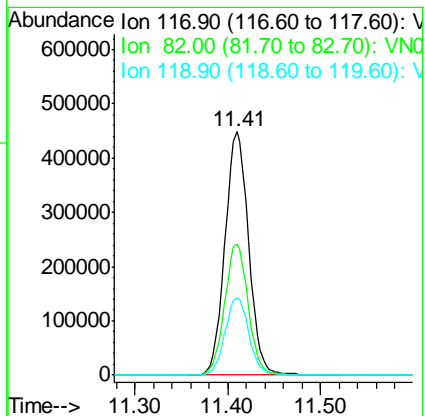
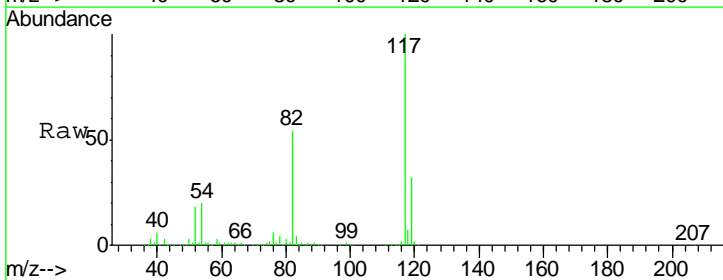
Instrument : MSVOA\_N  
 ClientSampled : SB5-U-23-13

Tgt Ion	Resp	Lower	Upper
95	344222		
174	91.9	0.0	179.6
176	87.4	0.0	174.0

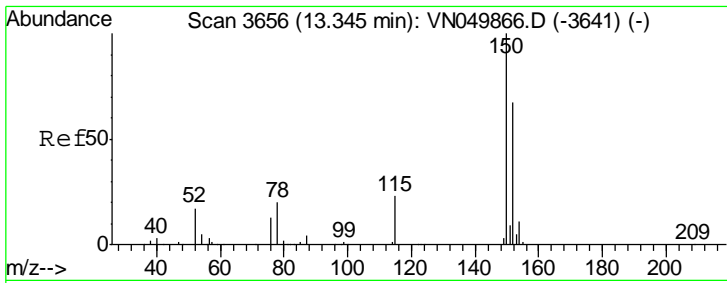


#63  
 Chlorobenzene-d5  
 Concen: 50.00 ug/l  
 RT: 11.41 min Scan# 3054  
 Delta R.T. 0.00 min  
 Lab File: VN049973.D  
 Acq: 20 Jul 2018 19:49

Tgt Ion	Resp	Lower	Upper
117	793052		
82	54.0	41.9	62.9
119	31.8	25.4	38.2



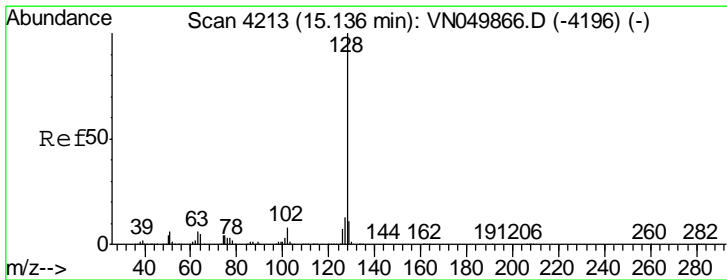
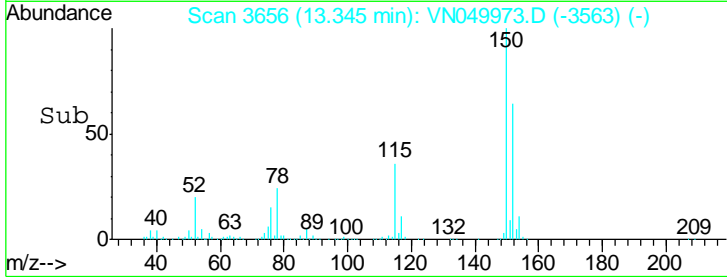
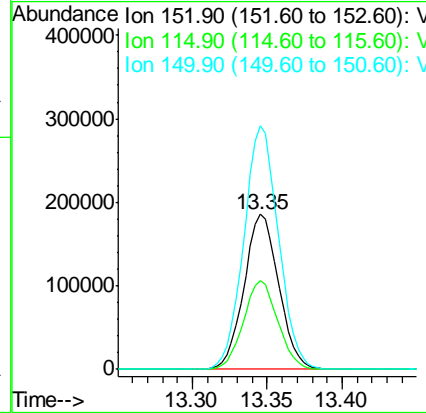
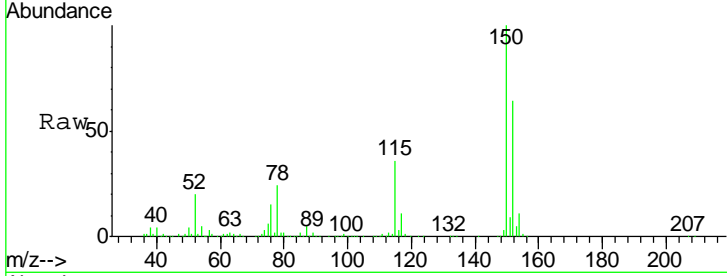




#72  
 1,4-Dichlorobenzene-d4  
 Concen: 50.00 ug/l  
 RT: 13.35 min Scan# 3656  
 Delta R.T. 0.00 min  
 Lab File: VN049973.D  
 Acq: 20 Jul 2018 19:49

Instrument :  
 MSVOA\_N  
 ClientSampled :  
 SB5-U-23-13

Tgt Ion	Resp	Lower	Upper
152	100		
115	56.6	28.1	84.2
150	156.5	0.0	347.6



#95  
 Naphthalene  
 Concen: 8.31 ug/l  
 RT: 15.14 min Scan# 4213  
 Delta R.T. 0.00 min  
 Lab File: VN049973.D  
 Acq: 20 Jul 2018 19:49

Tgt Ion	Resp	Lower	Upper
128	100		
127	13.0	10.4	15.6
129	11.1	8.6	13.0

