

Data Path : Z:\voasrv\HPCHEM1\MSVOA_N\Data\VN072122\
 Data File : VN073553.D
 Acq On : 21 Jul 2022 13:59
 Operator : JC\MD
 Sample : N3760-06DL 5X
 Misc : 2.46g/10mL/100uL/5.00mL/MSVOA_N/MEOH
 ALS Vial : 8 Sample Multiplier: 1

Instrument :
 MSVOA_N
 ClientSampleId :
 AUD-1606DL

Quant Time: Jul 21 15:51:13 2022
 Quant Method : Z:\voasrv\HPCHEM1\MSVOA_N\methods\82N062822W.M
 Quant Title : SW846 8260
 QLast Update : Wed Jun 29 01:54:03 2022
 Response via : Initial Calibration

Compound	R.T.	QIon	Response	Conc	Units	Dev(Min)
Internal Standards						
1) Pentafluorobenzene	8.010	168	296770	50.000	ug/l	0.00
34) 1,4-Difluorobenzene	8.898	114	471348	50.000	ug/l	0.00
63) Chlorobenzene-d5	11.686	117	465548	50.000	ug/l	0.00
72) 1,4-Dichlorobenzene-d4	13.616	152	246862	50.000	ug/l	0.00
System Monitoring Compounds						
33) 1,2-Dichloroethane-d4	8.369	65	172207	40.196	ug/l	0.00
Spiked Amount	50.000	Range	74 - 125	Recovery	=	80.400%
35) Dibromofluoromethane	7.951	113	146689	46.777	ug/l	0.00
Spiked Amount	50.000	Range	75 - 124	Recovery	=	93.560%
50) Toluene-d8	10.381	98	545510	48.978	ug/l	0.00
Spiked Amount	50.000	Range	86 - 113	Recovery	=	97.960%
62) 4-Bromofluorobenzene	12.669	95	248021	57.946	ug/l	0.00
Spiked Amount	50.000	Range	83 - 123	Recovery	=	115.900%
Target Compounds						
						Qvalue
3) Chloromethane	2.269	50	1342	0.319	ug/l	97
5) Bromomethane	2.763	94	1735	1.026	ug/l #	52
6) Chloroethane	2.957	64	1177	0.559	ug/l #	42
10) Methyl Iodide	4.334	142	1254	3.964	ug/l #	51
11) Tert butyl alcohol	5.251	59	235	0.226	ug/l #	72
13) Acrolein	3.987	56	155	0.236	ug/l	86
16) Acetone	4.234	43	3148	1.309	ug/l	99
18) Methyl Acetate	4.787	43	22690	3.367	ug/l #	87
20) Methylene Chloride	4.987	84	1556	0.368	ug/l	94
25) 2-Butanone	7.275	43	1099	0.287	ug/l #	45
27) cis-1,2-Dichloroethene	7.404	96	6683	1.512	ug/l #	1
28) Bromochloromethane	7.393	49	5496	1.847	ug/l #	8
29) Tetrahydrofuran	7.634	42	1140	0.435	ug/l #	33
31) Cyclohexane	8.004	56	25990	3.704	ug/l #	76
36) 1,1-Dichloropropene	8.004	75	23360	4.841	ug/l #	41
38) Carbon Tetrachloride	8.016	117	30092	6.031	ug/l #	16
39) Methylcyclohexane	9.392	83	196994	32.792	ug/l	93
43) Isopropyl Acetate	8.481	43	9410	0.898	ug/l #	53
45) 1,2-Dichloropropane	9.392	63	2118	0.558	ug/l #	1
47) Bromodichloromethane	9.675	83	3912	0.784	ug/l #	37
48) Methyl methacrylate	9.575	41	13454	2.773	ug/l #	66
51) 4-Methyl-2-Pentanone	10.375	43	24817	3.735	ug/l #	67
52) Toluene	10.445	92	542920	58.994	ug/l	99
53) t-1,3-Dichloropropene	10.439	75	6729	1.225	ug/l #	1
55) 1,1,2-Trichloroethane	10.816	97	73698	19.452	ug/l #	21
56) Ethyl methacrylate	10.722	69	35726	5.834	ug/l #	1
58) 2-Chloroethyl Vinyl ether	10.051	63	549	0.201	ug/l	94
59) 2-Hexanone	10.992	43	214192	42.287	ug/l #	25
64) Tetrachloroethene	10.916	164	2072	0.545	ug/l	95
67) Ethyl Benzene	11.786	91	489236	25.594	ug/l	100
68) m/p-Xylenes	11.886	106	423101	58.650	ug/l	96
69) o-Xylene	12.222	106	214236	29.090	ug/l	93
70) Styrene	12.222	104	12001	1.055	ug/l #	1
71) Bromoform	12.410	173	834	0.294	ug/l #	28
73) Isopropylbenzene	12.522	105	194595	9.128	ug/l	100
74) N-amyl acetate	12.310	43	348106	32.612	ug/l #	59

Data Path : Z:\voasrv\HPCHEM1\MSVOA_N\Data\VN072122\
 Data File : VN073553.D
 Acq On : 21 Jul 2022 13:59
 Operator : JC\MD
 Sample : N3760-06DL 5X
 Misc : 2.46g/10mL/100uL/5.00mL/MSVOA_N/MEOH
 ALS Vial : 8 Sample Multiplier: 1

Instrument :
 MSVOA_N
 ClientSampleId :
 AUD-1606DL

Quant Time: Jul 21 15:51:13 2022
 Quant Method : Z:\voasrv\HPCHEM1\MSVOA_N\methods\82N062822W.M
 Quant Title : SW846 8260
 QLast Update : Wed Jun 29 01:54:03 2022
 Response via : Initial Calibration

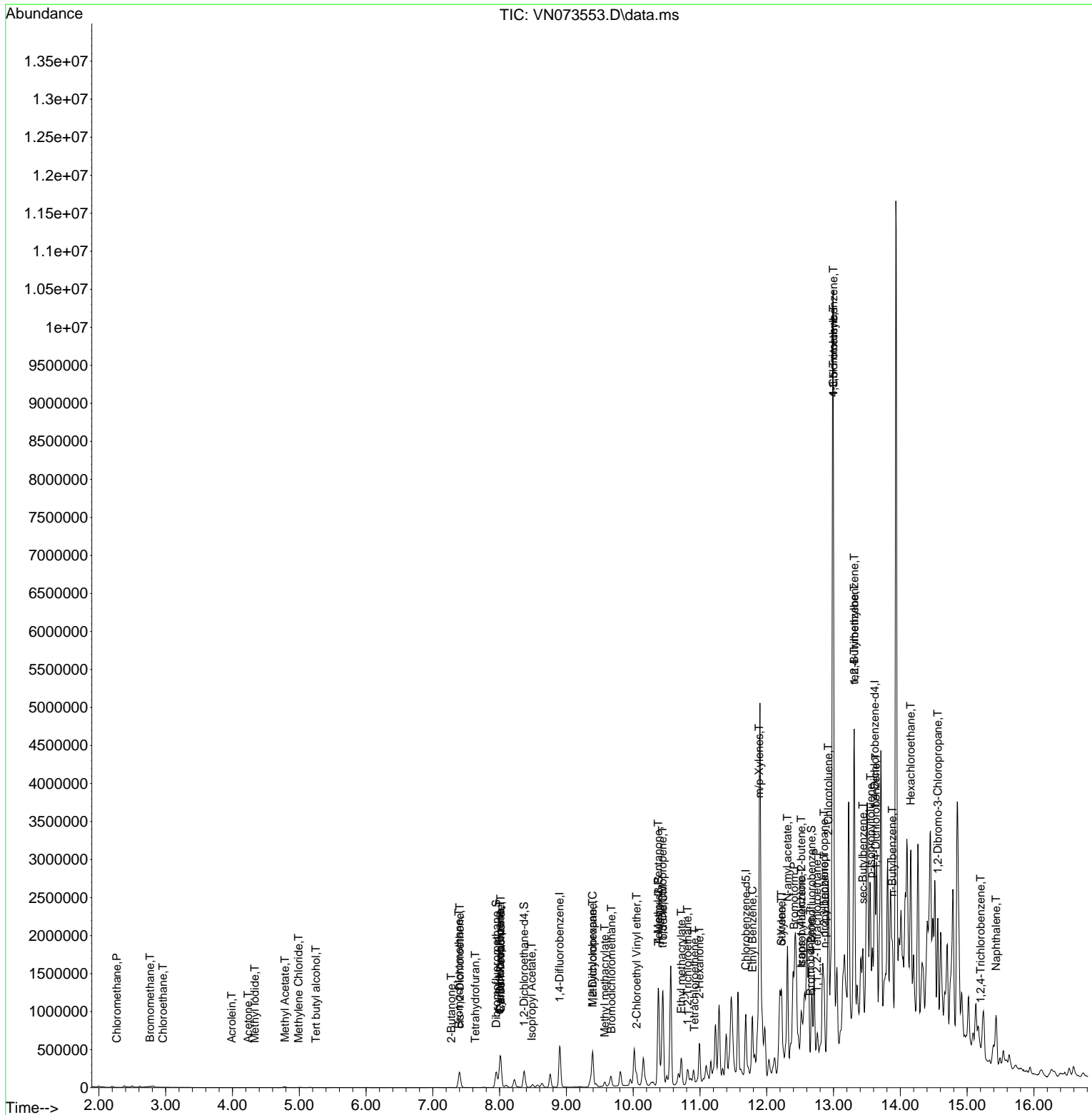
Compound	R.T.	QIon	Response	Conc	Units	Dev(Min)	
75) 1,1,2,2-Tetrachloroethane	12.751	83	17161	2.426	ug/l	#	25
76) 1,2,3-Trichloropropane	12.857	75	4388	0.680	ug/l	#	1
77) Bromobenzene	12.657	156	13019	2.627	ug/l	#	1
78) n-propylbenzene	12.863	91	637746	26.929	ug/l		98
79) 2-Chlorotoluene	12.922	91	135583	9.046	ug/l	#	42
80) 1,3,5-Trimethylbenzene	12.998	105	482349	27.760	ug/l		95
81) trans-1,4-Dichloro-2-b...	12.516	75	3783	1.607	ug/l	#	1
82) 4-Chlorotoluene	12.998	91	62945	4.338	ug/l	#	56
83) tert-Butylbenzene	13.310	119	244451	15.693	ug/l	#	61
84) 1,2,4-Trimethylbenzene	13.310	105	2101442	121.137	ug/l		97
85) sec-Butylbenzene	13.439	105	378084	18.075	ug/l		85
86) p-Isopropyltoluene	13.557	119	258136	15.277	ug/l		96
88) 1,4-Dichlorobenzene	13.633	146	4500	0.505	ug/l	#	1
89) n-Butylbenzene	13.880	91	704327	50.022	ug/l	#	72
90) Hexachloroethane	14.157	117	83945	26.658	ug/l	#	9
92) 1,2-Dibromo-3-Chloropr...	14.563	75	2885	1.678	ug/l	#	39
93) 1,2,4-Trichlorobenzene	15.204	180	945	0.200	ug/l	#	1
95) Naphthalene	15.433	128	565267	29.710	ug/l	#	96

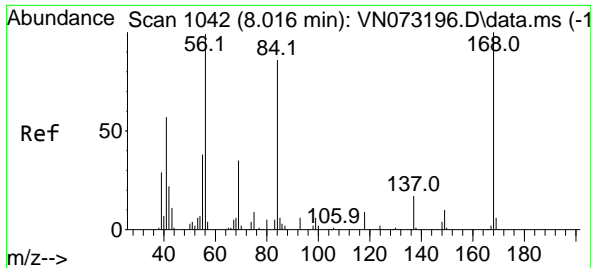
(#) = qualifier out of range (m) = manual integration (+) = signals summed

Data Path : Z:\voasrv\HPCHEM1\MSVOA_N\Data\VN072122\
 Data File : VN073553.D
 Acq On : 21 Jul 2022 13:59
 Operator : JC\MD
 Sample : N3760-06DL 5X
 Misc : 2.46g/10mL/100uL/5.00mL/MSVOA_N/MEOH
 ALS Vial : 8 Sample Multiplier: 1

Instrument :
 MSVOA_N
 Client Sample Id :
 AUD-1606DL

Quant Time: Jul 21 15:51:13 2022
 Quant Method : Z:\voasrv\HPCHEM1\MSVOA_N\methods\82N062822W.M
 Quant Title : SW846 8260
 QLast Update : Wed Jun 29 01:54:03 2022
 Response via : Initial Calibration

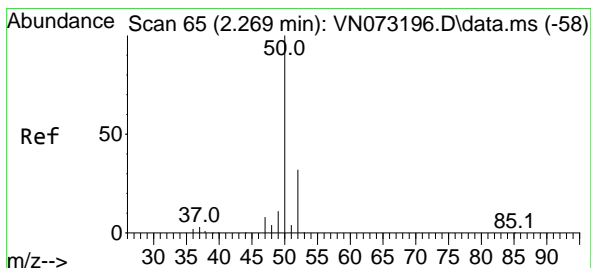
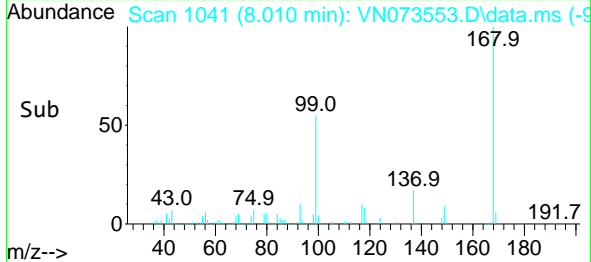
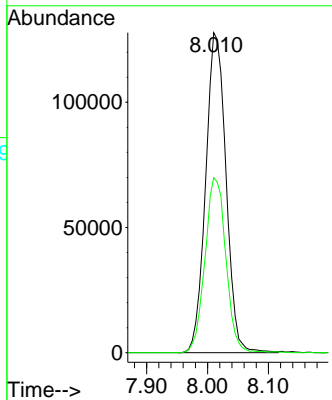
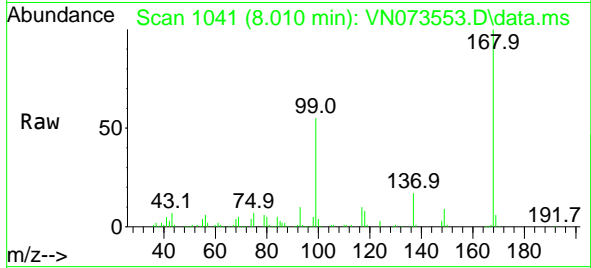




#1
 Pentafluorobenzene
 Concen: 50.000 ug/l
 RT: 8.010 min Scan# 1042
 Delta R.T. -0.006 min
 Lab File: VN073553.D
 Acq: 21 Jul 2022 13:59

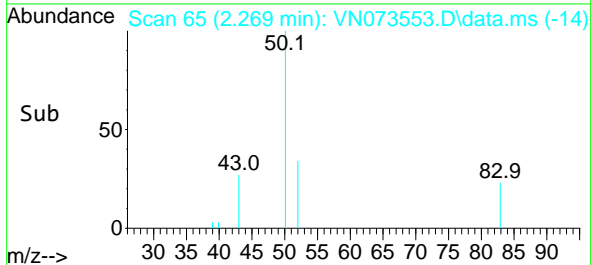
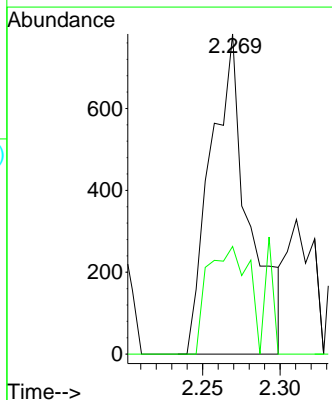
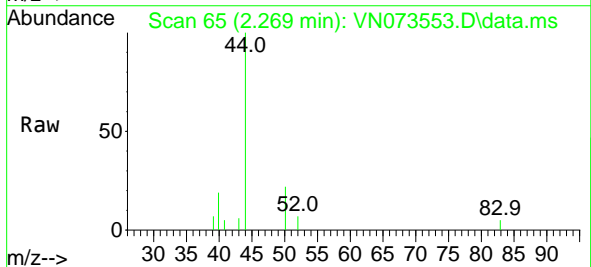
Instrument :
 MSVOA_N
 ClientSampleId :
 AUD-1606DL

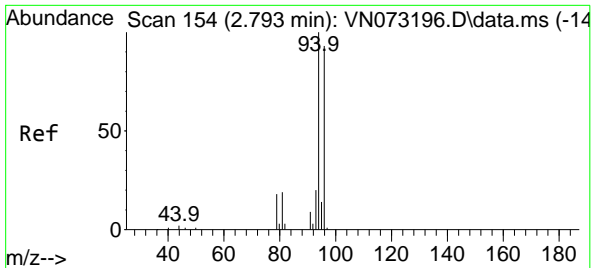
Tgt Ion:168 Resp: 296770
 Ion Ratio Lower Upper
 168 100
 99 54.7 42.3 63.5



#3
 Chloromethane
 Concen: 0.319 ug/l
 RT: 2.269 min Scan# 65
 Delta R.T. 0.000 min
 Lab File: VN073553.D
 Acq: 21 Jul 2022 13:59

Tgt Ion: 50 Resp: 1342
 Ion Ratio Lower Upper
 50 100
 52 33.6 25.7 38.5

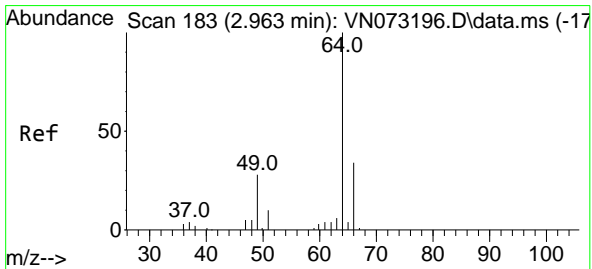
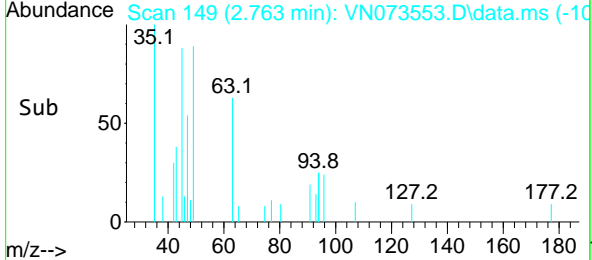
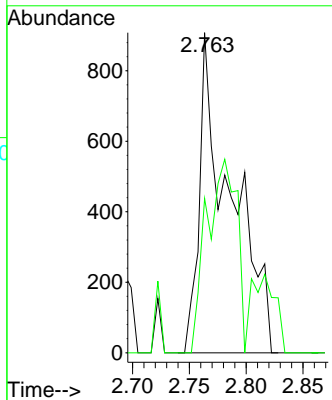
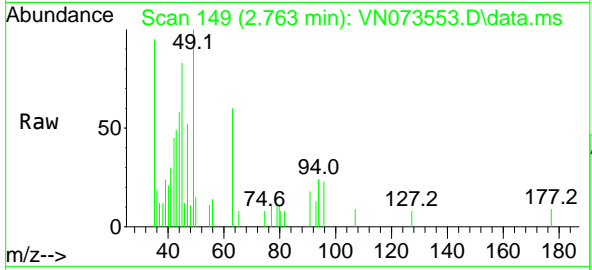




#5
 Bromomethane
 Concen: 1.026 ug/l
 RT: 2.763 min Scan# 149
 Delta R.T. -0.030 min
 Lab File: VN073553.D
 Acq: 21 Jul 2022 13:59

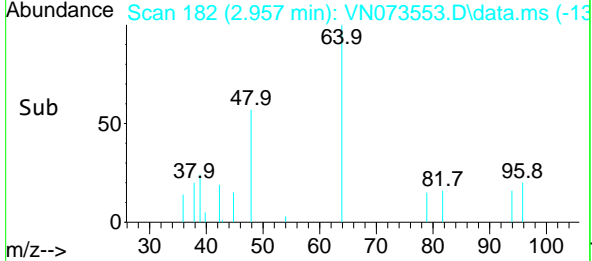
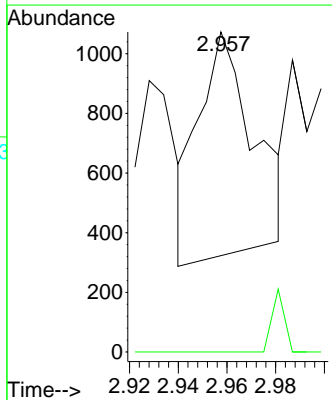
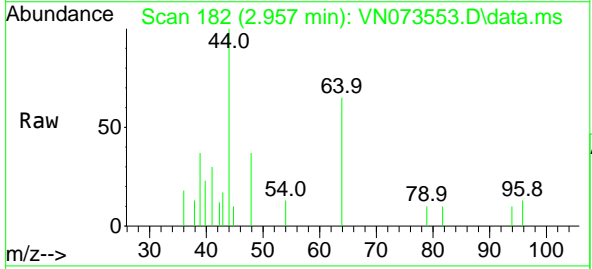
Instrument : MSVOA_N
 ClientSampleId : AUD-1606DL

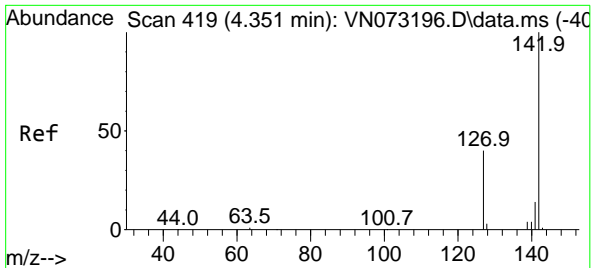
Tgt Ion: 94 Resp: 1735
 Ion Ratio Lower Upper
 94 100
 96 48.2 76.0 114.0#



#6
 Chloroethane
 Concen: 0.559 ug/l
 RT: 2.957 min Scan# 182
 Delta R.T. -0.006 min
 Lab File: VN073553.D
 Acq: 21 Jul 2022 13:59

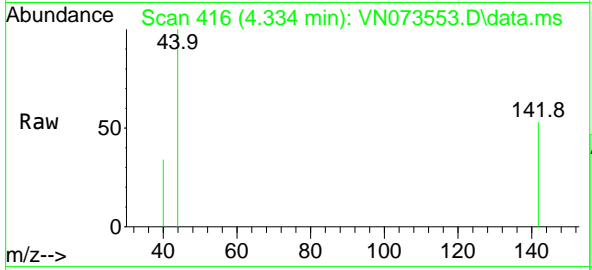
Tgt Ion: 64 Resp: 1177
 Ion Ratio Lower Upper
 64 100
 66 0.0 26.2 39.4#





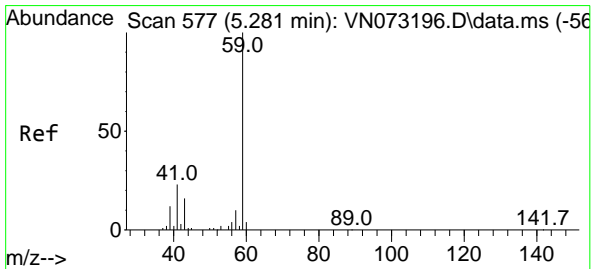
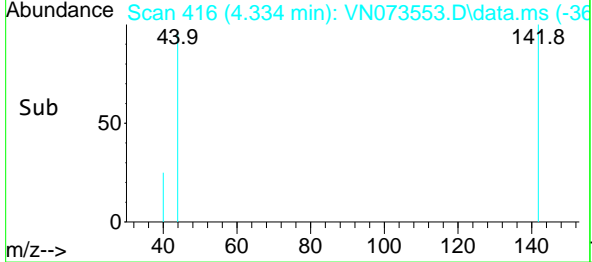
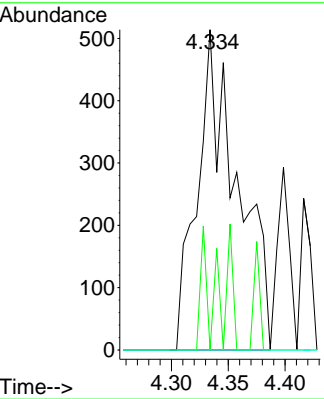
#10
 Methyl Iodide
 Concen: 3.964 ug/l
 RT: 4.334 min Scan# 416
 Delta R.T. -0.017 min
 Lab File: VN073553.D
 Acq: 21 Jul 2022 13:59

Instrument : MSVOA_N
 ClientSampleId : AUD-1606DL



Tgt Ion: 142 Resp: 1254

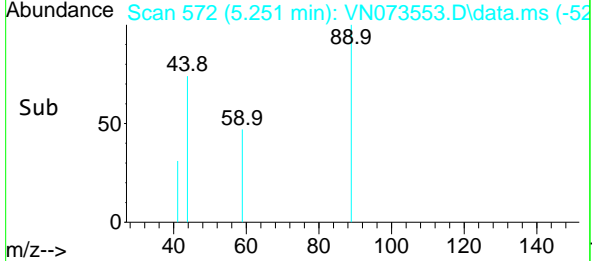
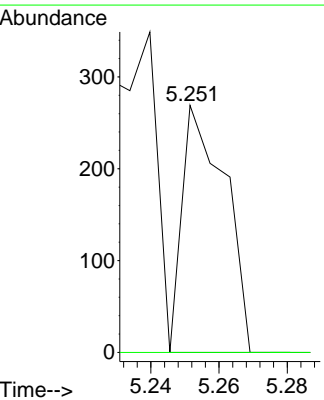
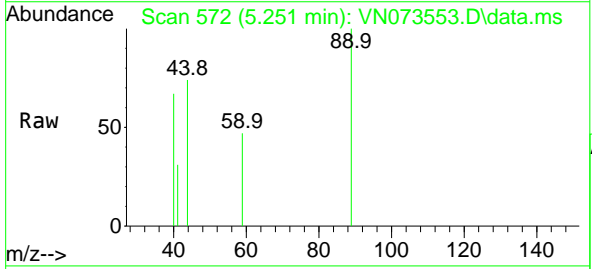
Ion	Ratio	Lower	Upper
142	100		
127	5.6	31.3	46.9#
141	0.0	11.2	16.8#

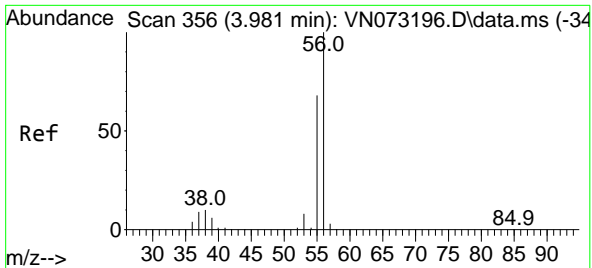


#11
 Tert butyl alcohol
 Concen: 0.226 ug/l
 RT: 5.251 min Scan# 572
 Delta R.T. -0.030 min
 Lab File: VN073553.D
 Acq: 21 Jul 2022 13:59

Tgt Ion: 59 Resp: 235

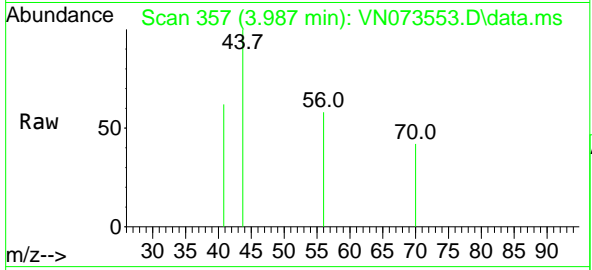
Ion	Ratio	Lower	Upper
59	100		
57	0.0	8.3	12.5#



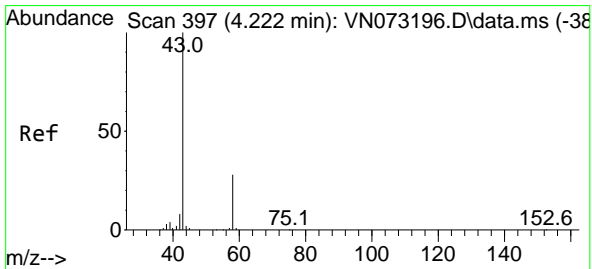
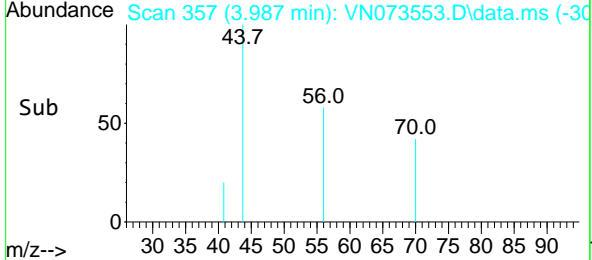
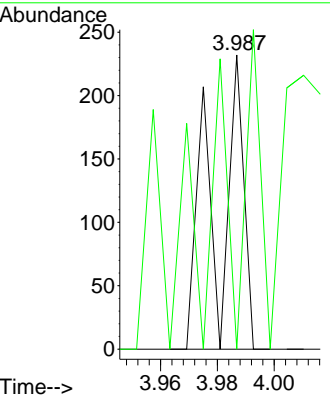


#13
 Acrolein
 Concen: 0.236 ug/l
 RT: 3.987 min Scan# 31
 Delta R.T. 0.006 min
 Lab File: VN073553.D
 Acq: 21 Jul 2022 13:59

Instrument : MSVOA_N
 ClientSampleId : AUD-1606DL

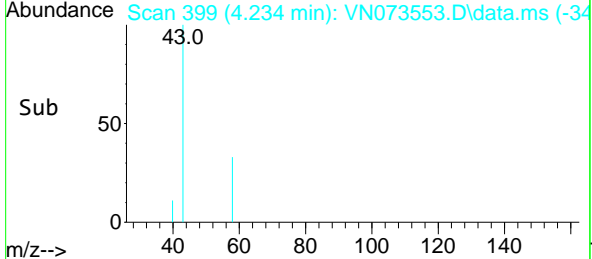
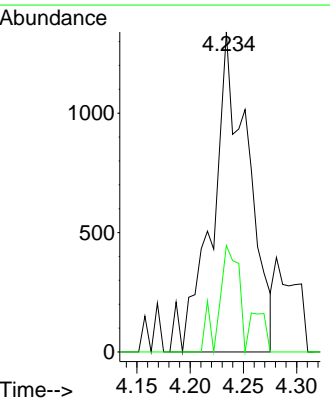
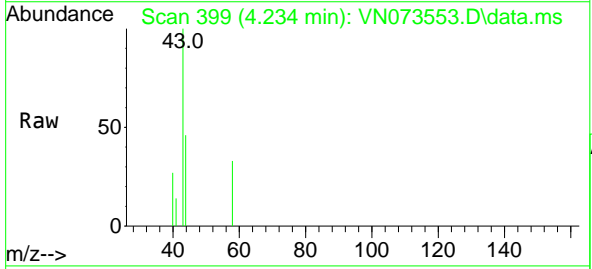


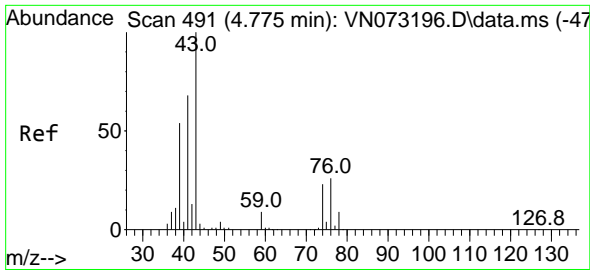
Tgt Ion: 56 Resp: 155
 Ion Ratio Lower Upper
 56 100
 55 57.4 54.8 82.2



#16
 Acetone
 Concen: 1.309 ug/l
 RT: 4.234 min Scan# 399
 Delta R.T. 0.012 min
 Lab File: VN073553.D
 Acq: 21 Jul 2022 13:59

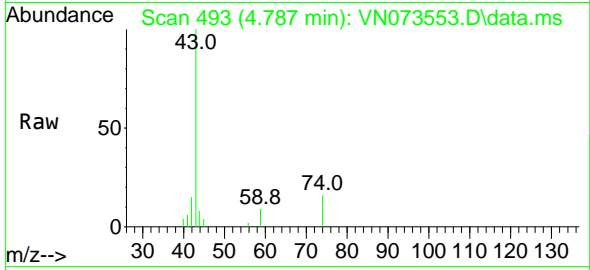
Tgt Ion: 43 Resp: 3148
 Ion Ratio Lower Upper
 43 100
 58 33.3 26.0 39.0



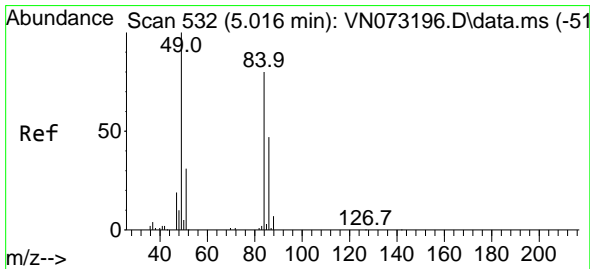
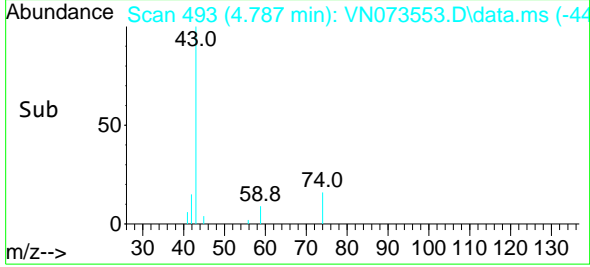
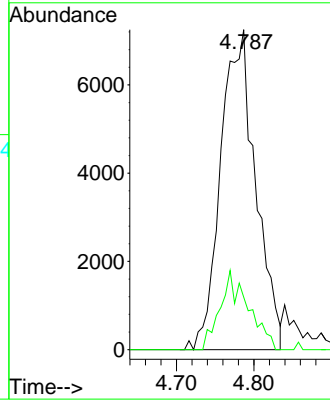


#18
 Methyl Acetate
 Concen: 3.367 ug/l
 RT: 4.787 min Scan# 493
 Delta R.T. 0.012 min
 Lab File: VN073553.D
 Acq: 21 Jul 2022 13:59

Instrument : MSVOA_N
 ClientSampleId : AUD-1606DL

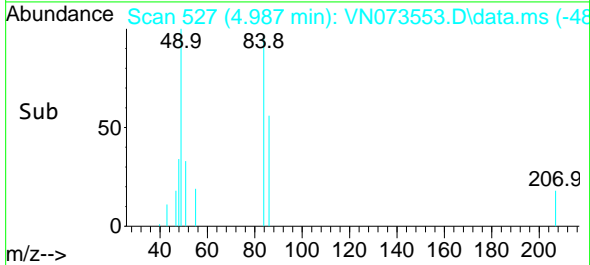
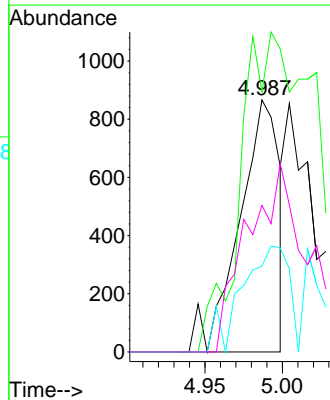
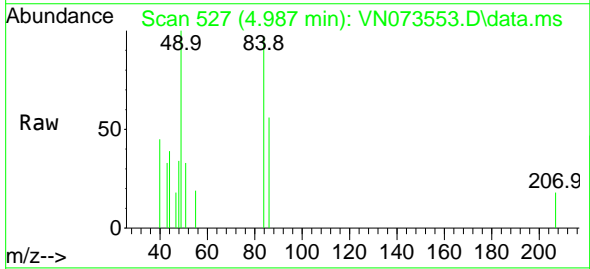


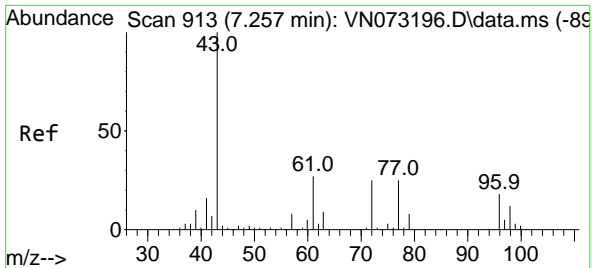
Tgt Ion: 43 Resp: 22690
 Ion Ratio Lower Upper
 43 100
 74 20.1 21.6 32.4#



#20
 Methylene Chloride
 Concen: 0.368 ug/l
 RT: 4.987 min Scan# 527
 Delta R.T. -0.029 min
 Lab File: VN073553.D
 Acq: 21 Jul 2022 13:59

Tgt Ion: 84 Resp: 1556
 Ion Ratio Lower Upper
 84 100
 49 103.3 88.3 132.5
 51 34.1 28.2 42.2
 86 58.2 50.6 76.0

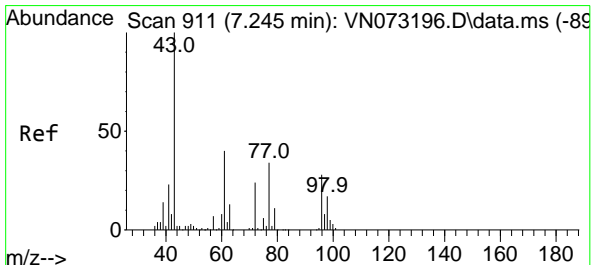
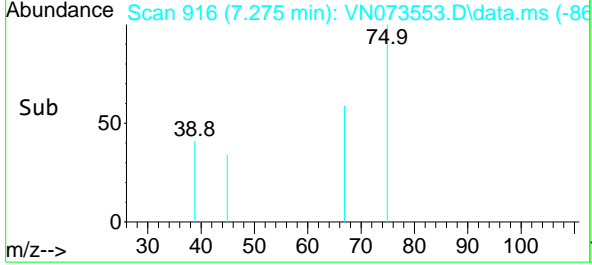
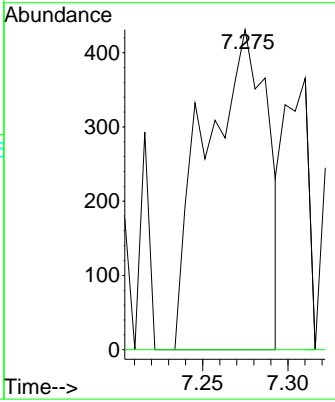
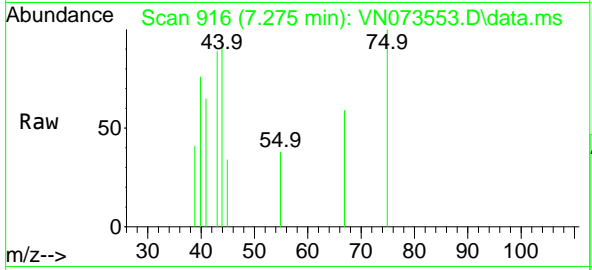




#25
 2-Butanone
 Concen: 0.287 ug/l
 RT: 7.275 min Scan# 916
 Delta R.T. 0.018 min
 Lab File: VN073553.D
 Acq: 21 Jul 2022 13:59

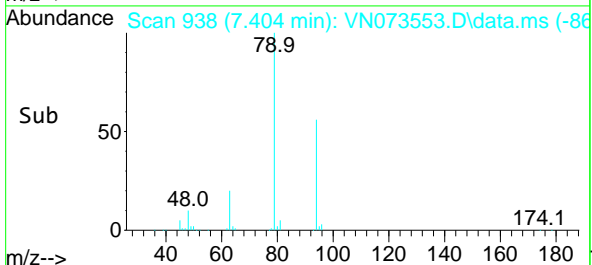
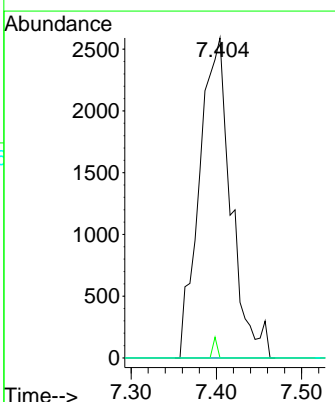
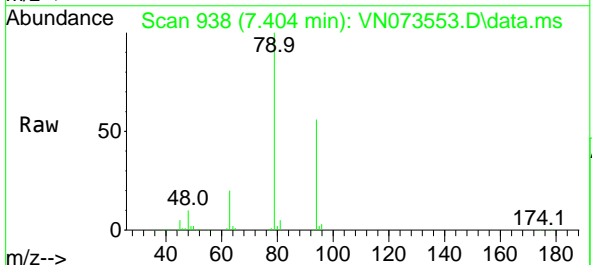
Instrument : MSVOA_N
 Client Sample Id : AUD-1606DL

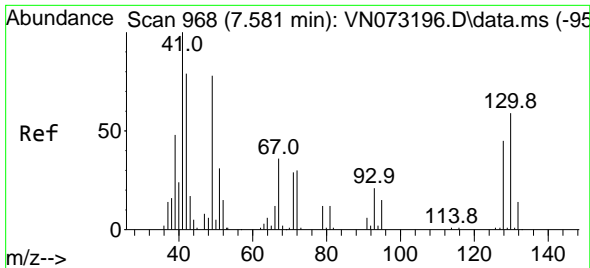
Tgt Ion: 43 Resp: 1099
 Ion Ratio Lower Upper
 43 100
 72 0.0 23.7 35.5#



#27
 cis-1,2-Dichloroethene
 Concen: 1.512 ug/l
 RT: 7.404 min Scan# 938
 Delta R.T. 0.159 min
 Lab File: VN073553.D
 Acq: 21 Jul 2022 13:59

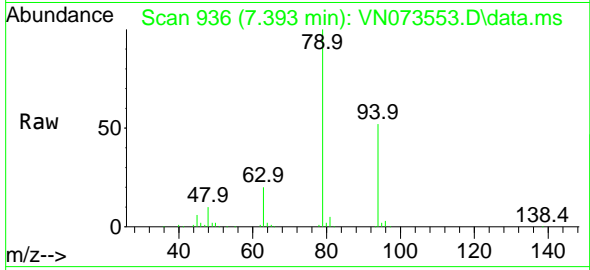
Tgt Ion: 96 Resp: 6683
 Ion Ratio Lower Upper
 96 100
 61 0.9 0.0 280.6
 98 0.0 0.0 128.4





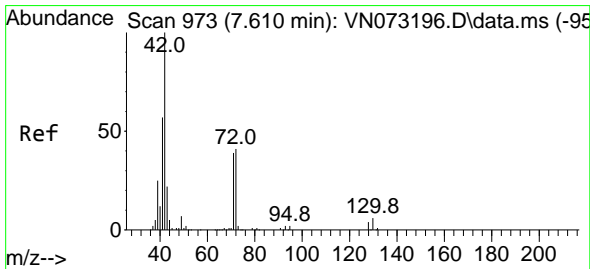
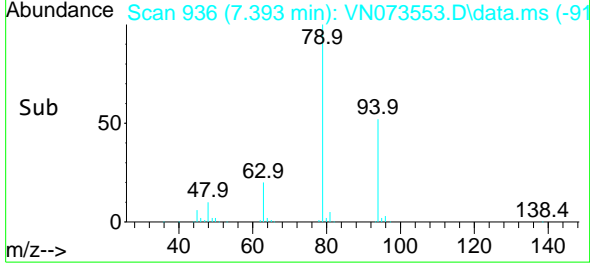
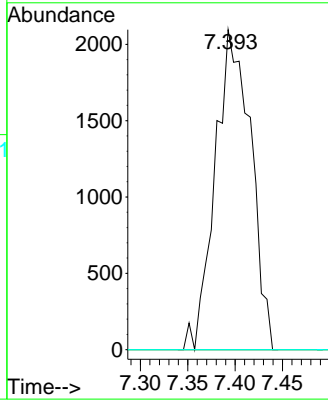
#28
 Bromochloromethane
 Concen: 1.847 ug/l
 RT: 7.393 min Scan# 911
 Delta R.T. -0.189 min
 Lab File: VN073553.D
 Acq: 21 Jul 2022 13:59

Instrument :
 MSVOA_N
 ClientSampleId :
 AUD-1606DL



Tgt Ion: 49 Resp: 5496

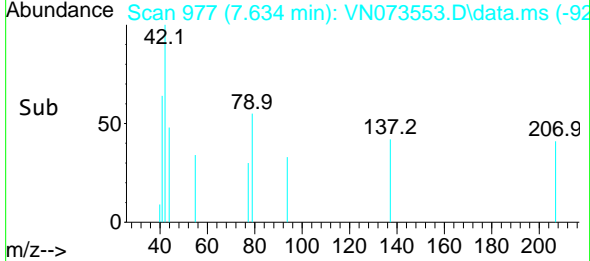
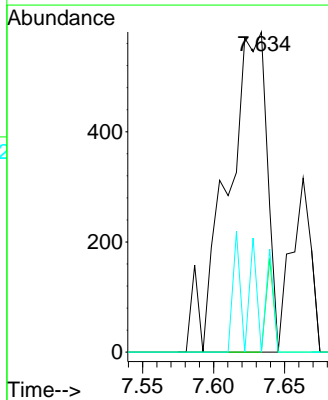
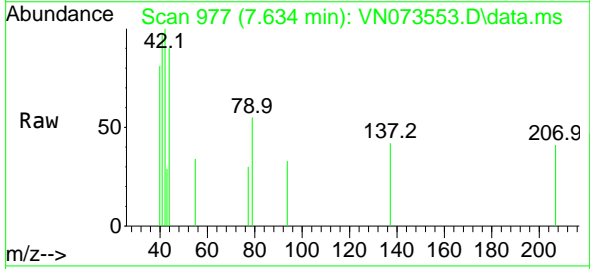
Ion	Ratio	Lower	Upper
49	100		
129	0.0	0.0	4.6
130	0.0	69.7	104.5#

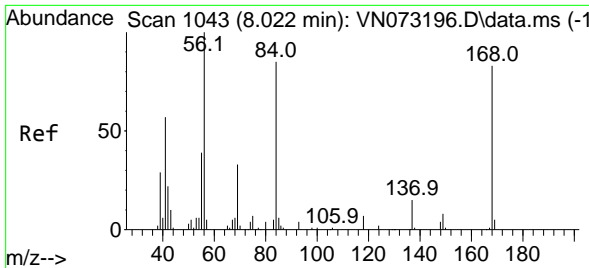


#29
 Tetrahydrofuran
 Concen: 0.435 ug/l
 RT: 7.634 min Scan# 977
 Delta R.T. 0.024 min
 Lab File: VN073553.D
 Acq: 21 Jul 2022 13:59

Tgt Ion: 42 Resp: 1140

Ion	Ratio	Lower	Upper
42	100		
72	5.3	39.7	59.5#
71	0.0	36.6	55.0#



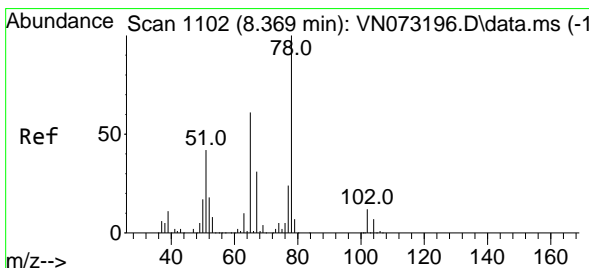
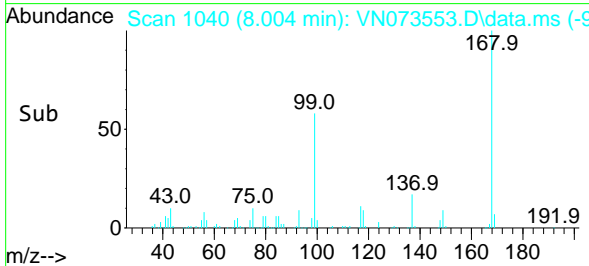
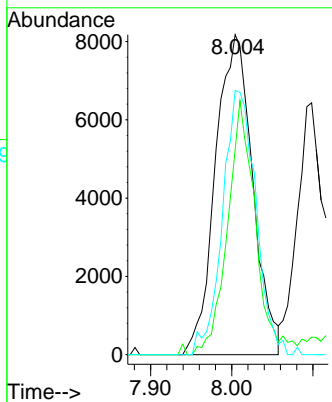
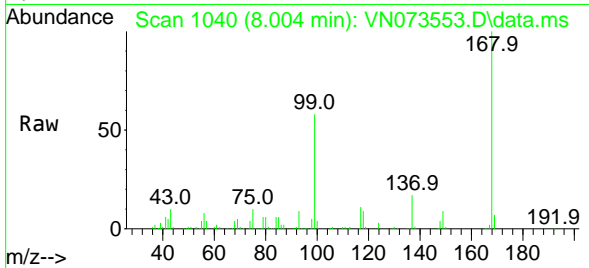


#31
 Cyclohexane
 Concen: 3.704 ug/l
 RT: 8.004 min Scan# 1040
 Delta R.T. -0.018 min
 Lab File: VN073553.D
 Acq: 21 Jul 2022 13:59

Instrument : MSVOA_N
 ClientSampleId : AUD-1606DL

Tgt Ion: 56 Resp: 25990

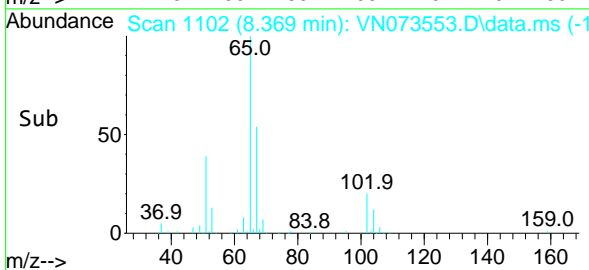
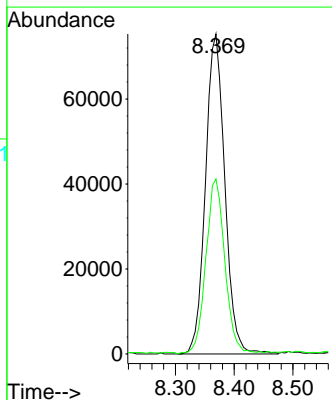
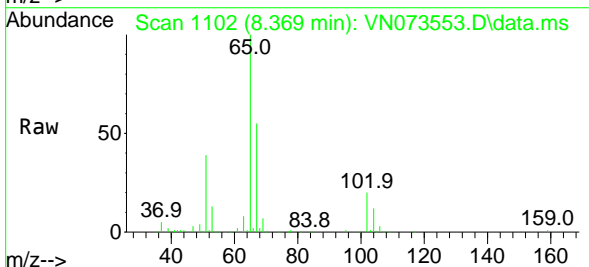
Ion	Ratio	Lower	Upper
56	100		
69	64.1	27.8	41.8#
84	82.6	76.9	115.3

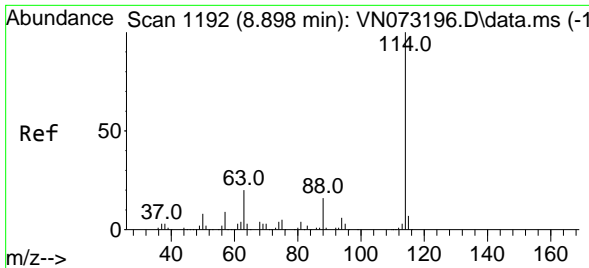


#33
 1,2-Dichloroethane-d4
 Concen: 40.196 ug/l
 RT: 8.369 min Scan# 1102
 Delta R.T. -0.000 min
 Lab File: VN073553.D
 Acq: 21 Jul 2022 13:59

Tgt Ion: 65 Resp: 172207

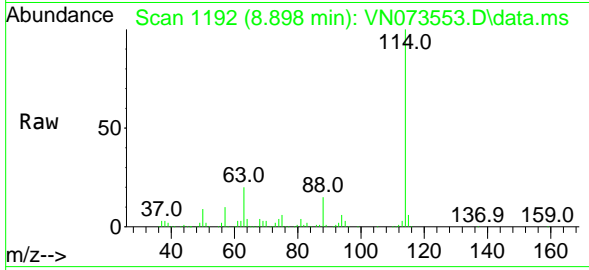
Ion	Ratio	Lower	Upper
65	100		
67	53.8	0.0	104.8



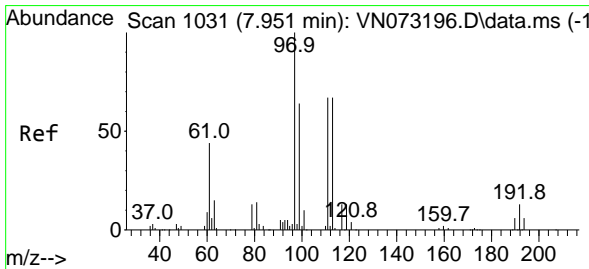
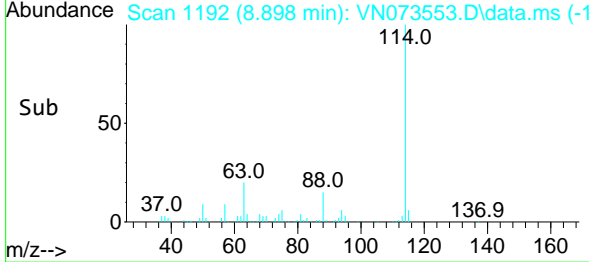
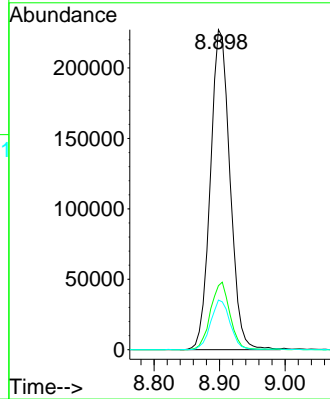


#34
 1,4-Difluorobenzene
 Concen: 50.000 ug/l
 RT: 8.898 min Scan# 1192
 Delta R.T. 0.000 min
 Lab File: VN073553.D
 Acq: 21 Jul 2022 13:59

Instrument : MSVOA_N
 ClientSampleId : AUD-1606DL

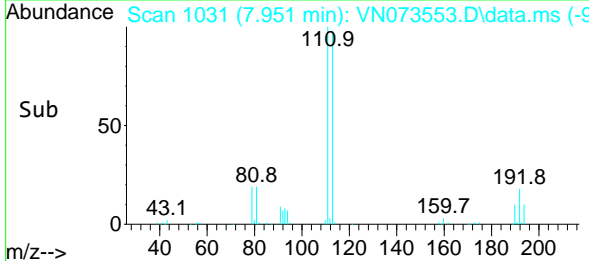
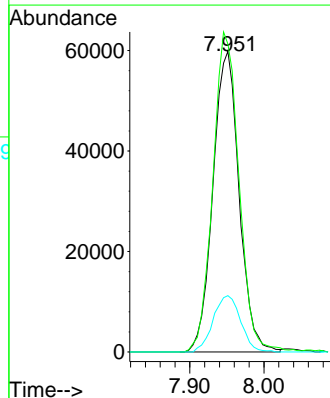
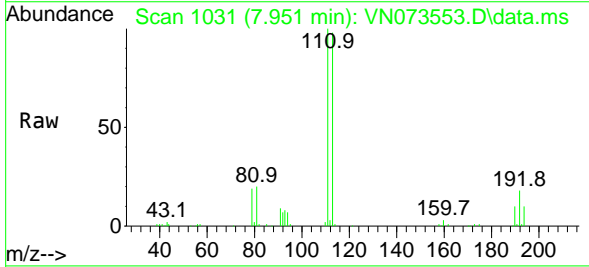


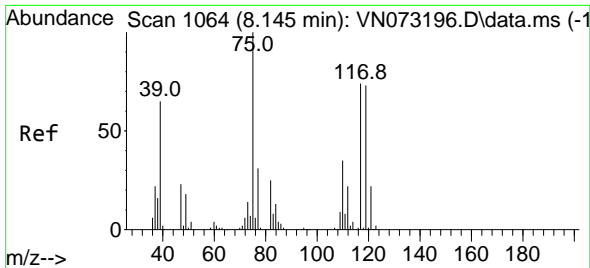
Tgt Ion:114 Resp: 471348
 Ion Ratio Lower Upper
 114 100
 63 20.0 0.0 40.0
 88 15.5 0.0 32.6



#35
 Dibromofluoromethane
 Concen: 46.777 ug/l
 RT: 7.951 min Scan# 1031
 Delta R.T. 0.000 min
 Lab File: VN073553.D
 Acq: 21 Jul 2022 13:59

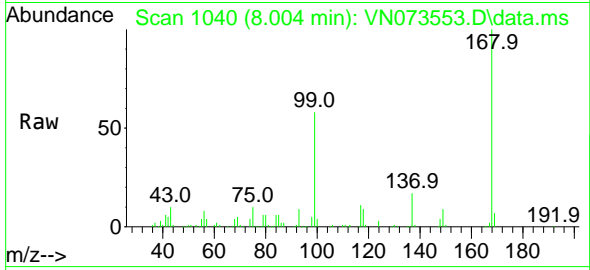
Tgt Ion:113 Resp: 146689
 Ion Ratio Lower Upper
 113 100
 111 106.3 81.4 122.0
 192 19.6 17.0 25.6



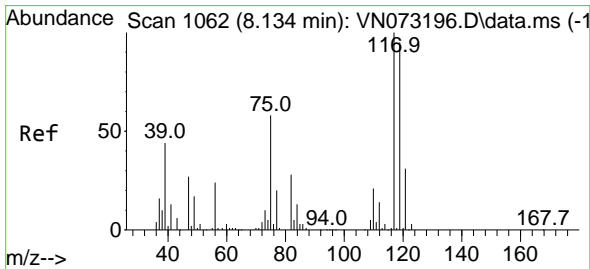
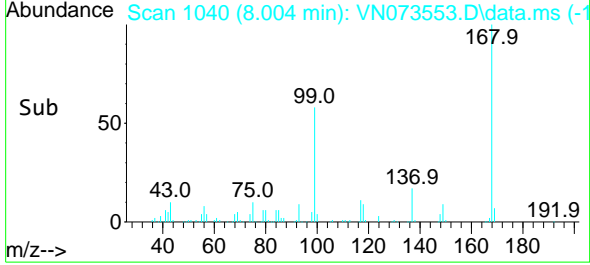
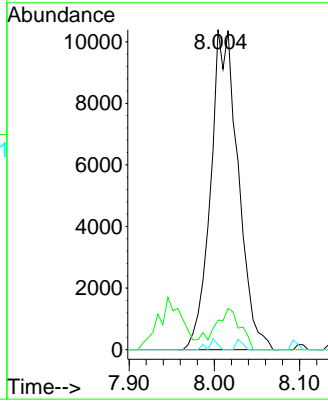


#36
 1,1-Dichloropropene
 Concen: 4.841 ug/l
 RT: 8.004 min Scan# 1040
 Delta R.T. -0.141 min
 Lab File: VN073553.D
 Acq: 21 Jul 2022 13:59

Instrument : MSVOA_N
 ClientSampleId : AUD-1606DL

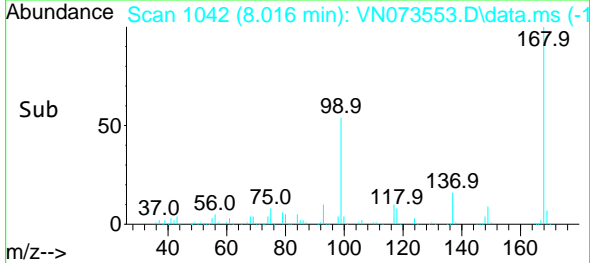
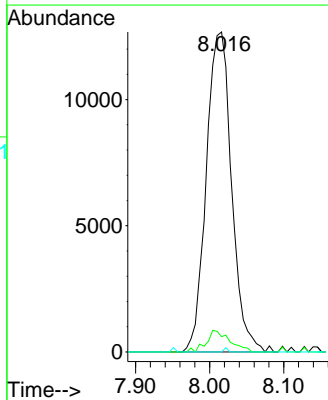
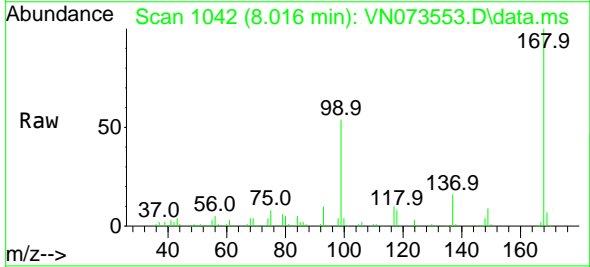


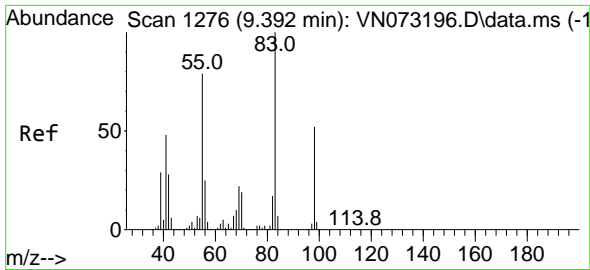
Tgt Ion: 75 Resp: 23360
 Ion Ratio Lower Upper
 75 100
 110 0.0 18.3 54.8#
 77 1.0 25.1 37.7#



#38
 Carbon Tetrachloride
 Concen: 6.031 ug/l
 RT: 8.016 min Scan# 1042
 Delta R.T. -0.118 min
 Lab File: VN073553.D
 Acq: 21 Jul 2022 13:59

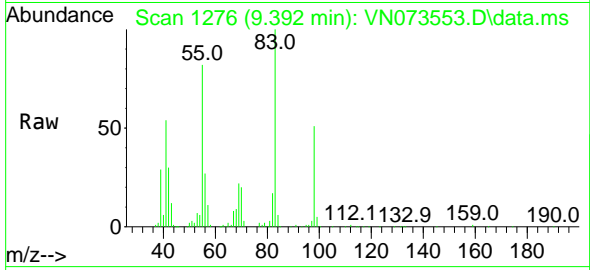
Tgt Ion: 117 Resp: 30092
 Ion Ratio Lower Upper
 117 100
 119 4.8 75.8 113.8#
 121 0.0 24.6 37.0#





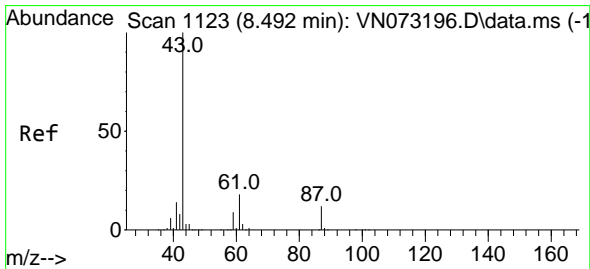
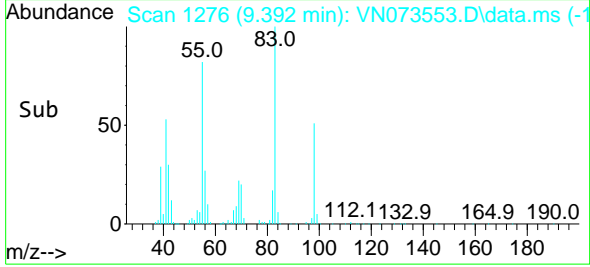
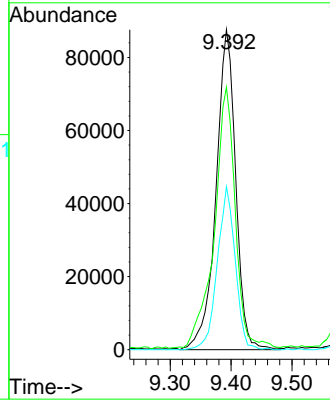
#39
 Methylcyclohexane
 Concen: 32.792 ug/l
 RT: 9.392 min Scan# 1127
 Delta R.T. 0.000 min
 Lab File: VN073553.D
 Acq: 21 Jul 2022 13:59

Instrument :
 MSVOA_N
 ClientSampleId :
 AUD-1606DL



Tgt Ion: 83 Resp: 196994

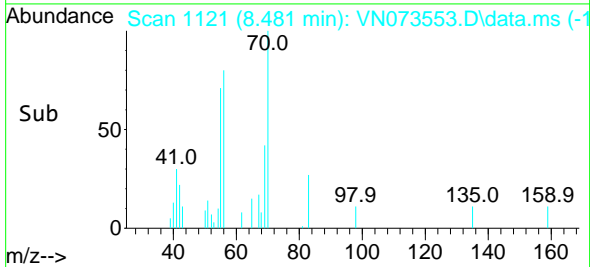
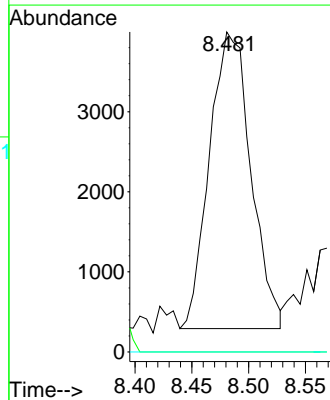
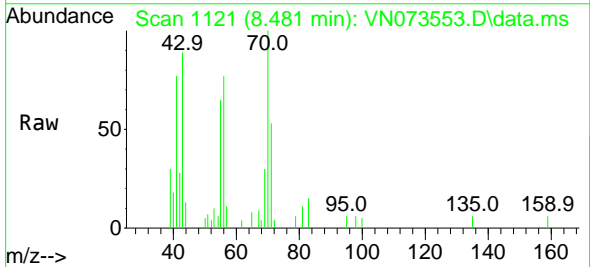
Ion	Ratio	Lower	Upper
83	100		
55	81.4	57.8	86.8
98	50.9	39.4	59.2

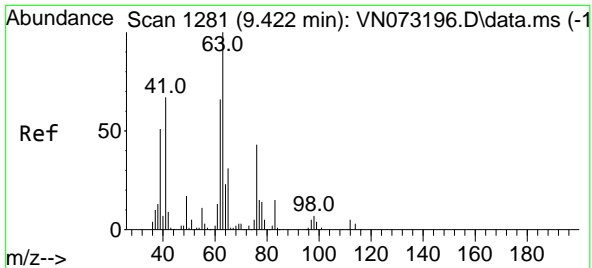


#43
 Isopropyl Acetate
 Concen: 0.898 ug/l
 RT: 8.481 min Scan# 1121
 Delta R.T. -0.011 min
 Lab File: VN073553.D
 Acq: 21 Jul 2022 13:59

Tgt Ion: 43 Resp: 9410

Ion	Ratio	Lower	Upper
43	100		
61	0.0	21.9	32.9#
87	0.0	12.0	18.0#

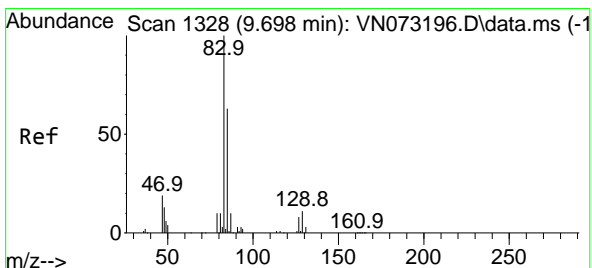
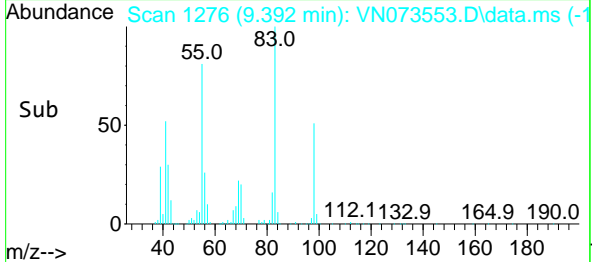
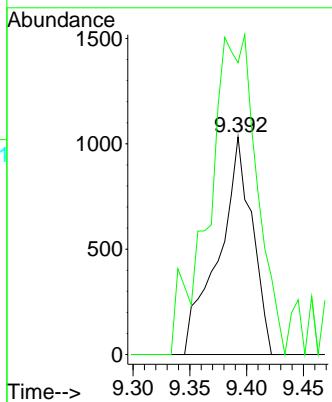
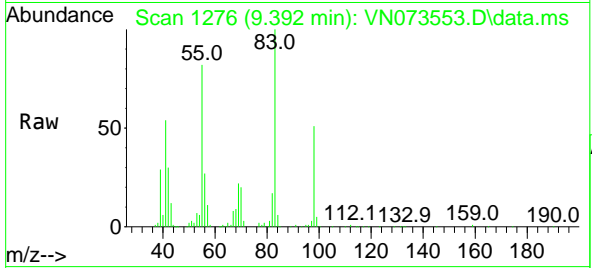




#45
 1,2-Dichloropropane
 Concen: 0.558 ug/l
 RT: 9.392 min Scan# 11
 Delta R.T. -0.030 min
 Lab File: VN073553.D
 Acq: 21 Jul 2022 13:59

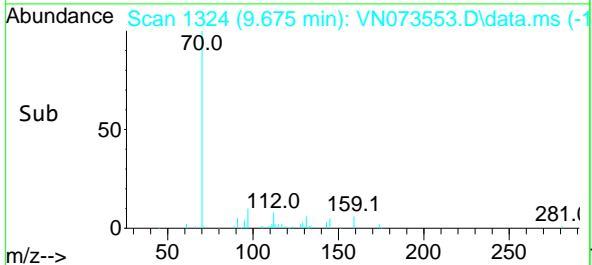
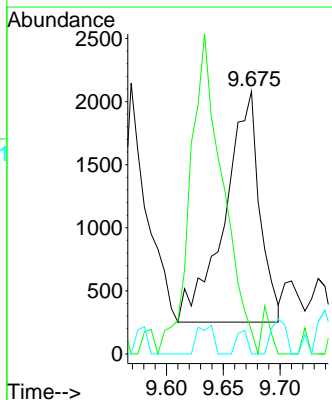
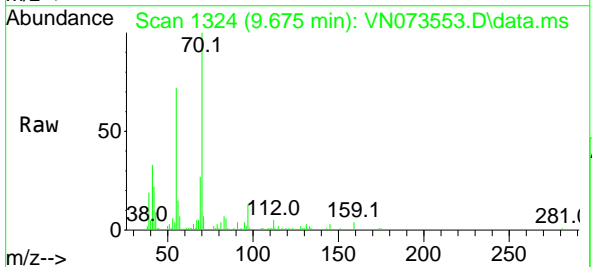
Instrument :
 MSVOA_N
 ClientSampleId :
 AUD-1606DL

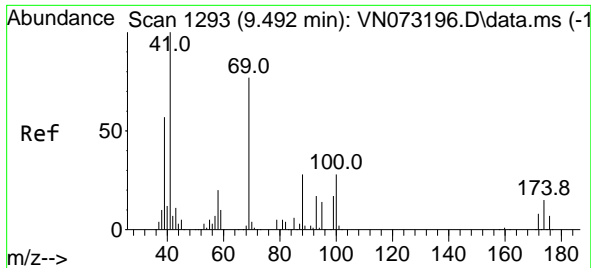
Tgt Ion: 63 Resp: 2118
 Ion Ratio Lower Upper
 63 100
 65 116.8 24.9 37.3#



#47
 Bromodichloromethane
 Concen: 0.784 ug/l
 RT: 9.675 min Scan# 1324
 Delta R.T. -0.023 min
 Lab File: VN073553.D
 Acq: 21 Jul 2022 13:59

Tgt Ion: 83 Resp: 3912
 Ion Ratio Lower Upper
 83 100
 85 10.1 50.5 75.7#
 127 0.0 6.8 10.2#

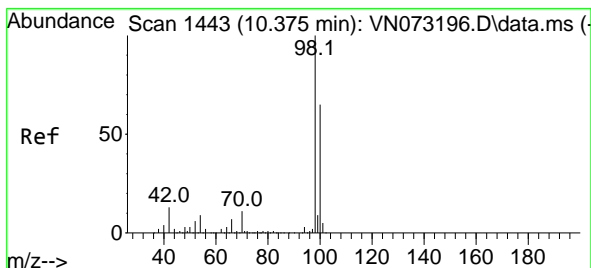
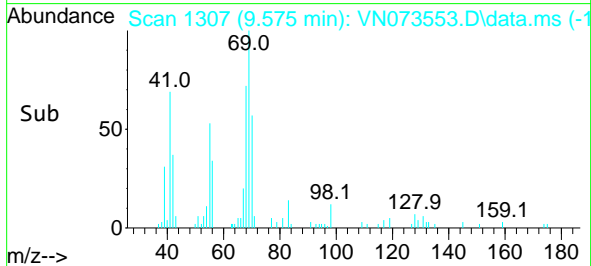
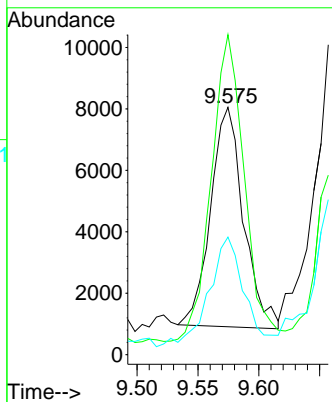
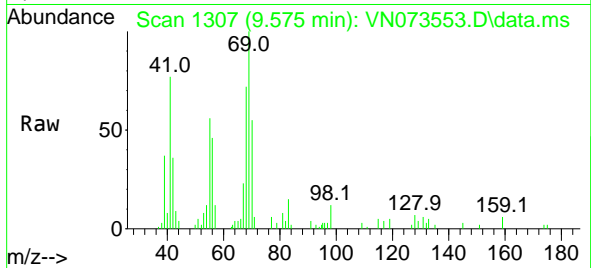




#48
 Methyl methacrylate
 Concen: 2.773 ug/l
 RT: 9.575 min Scan# 1307
 Delta R.T. 0.083 min
 Lab File: VN073553.D
 Acq: 21 Jul 2022 13:59

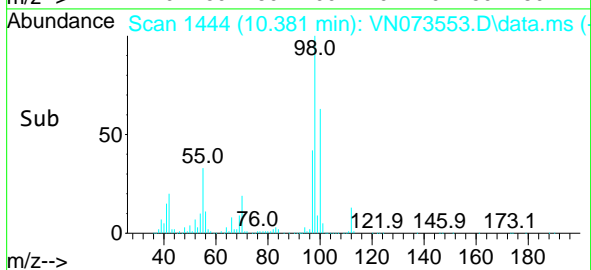
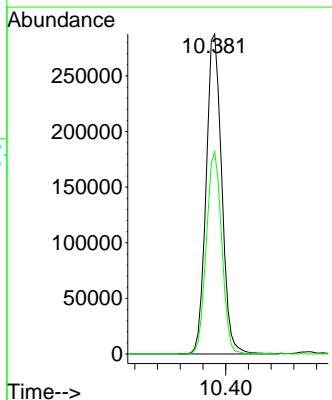
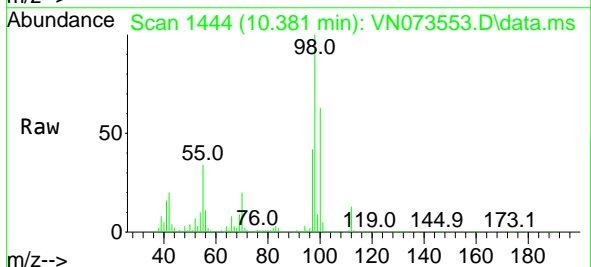
Instrument : MSVOA_N
 ClientSampleId : AUD-1606DL

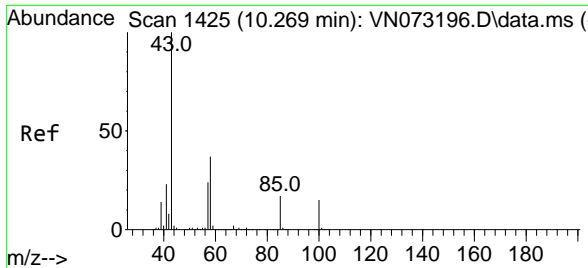
Tgt Ion	Resp	Lower	Upper
41	13454		
69	141.0	74.7	112.1#
39	50.4	45.6	68.4



#50
 Toluene-d8
 Concen: 48.978 ug/l
 RT: 10.381 min Scan# 1444
 Delta R.T. 0.006 min
 Lab File: VN073553.D
 Acq: 21 Jul 2022 13:59

Tgt Ion	Resp	Lower	Upper
98	545510		
100	100	52.6	78.8
100	62.4		

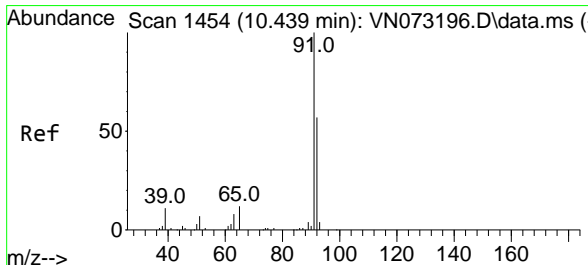
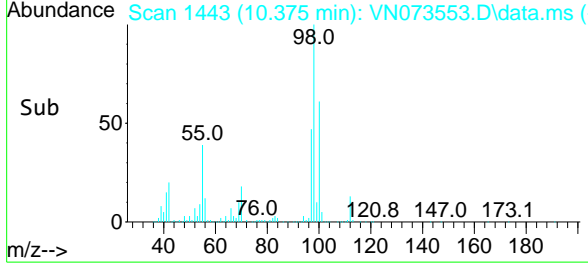
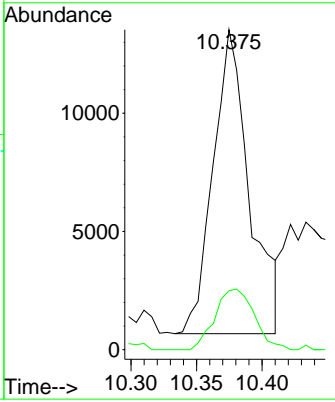
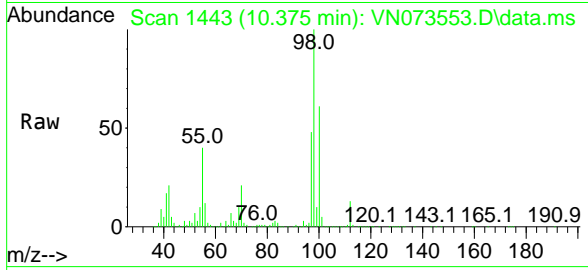




#51
 4-Methyl-2-Pentanone
 Concen: 3.735 ug/l
 RT: 10.375 min Scan# 1425
 Delta R.T. 0.106 min
 Lab File: VN073553.D
 Acq: 21 Jul 2022 13:59

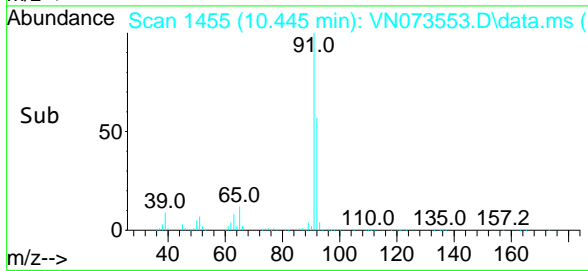
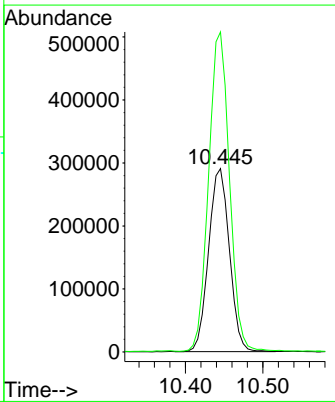
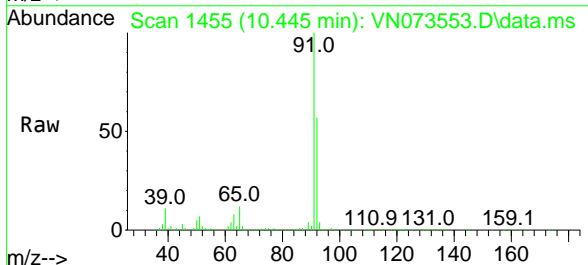
Instrument : MSVOA_N
 ClientSampleId : AUD-1606DL

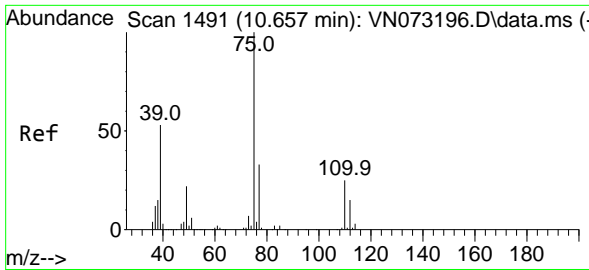
Tgt Ion: 43 Resp: 24817
 Ion Ratio Lower Upper
 43 100
 58 21.5 34.1 51.1#



#52
 Toluene
 Concen: 58.994 ug/l
 RT: 10.445 min Scan# 1455
 Delta R.T. 0.006 min
 Lab File: VN073553.D
 Acq: 21 Jul 2022 13:59

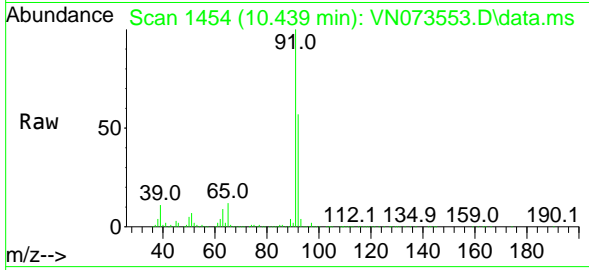
Tgt Ion: 92 Resp: 542920
 Ion Ratio Lower Upper
 92 100
 91 174.4 138.6 207.8



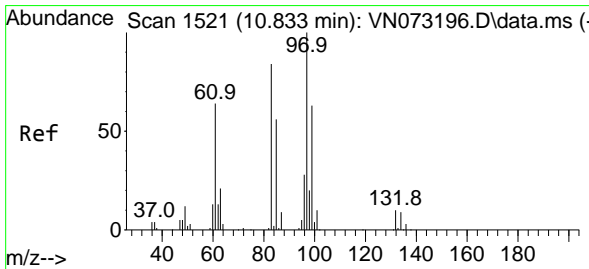
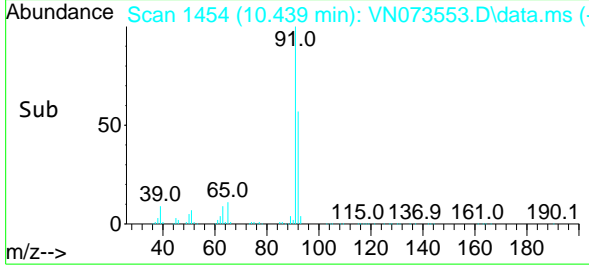
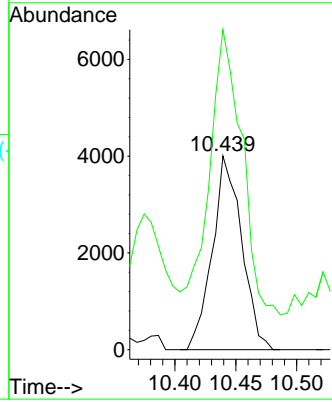


#53
 t-1,3-Dichloropropene
 Concen: 1.225 ug/l
 RT: 10.439 min Scan# 14
 Delta R.T. -0.218 min
 Lab File: VN073553.D
 Acq: 21 Jul 2022 13:59

Instrument :
 MSVOA_N
 ClientSampleId :
 AUD-1606DL

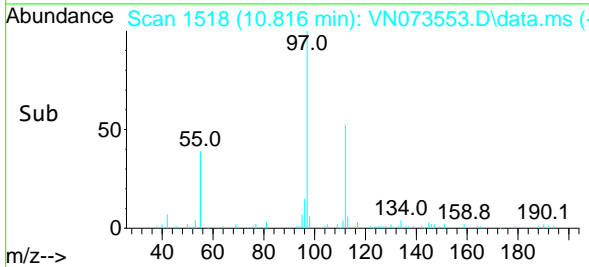
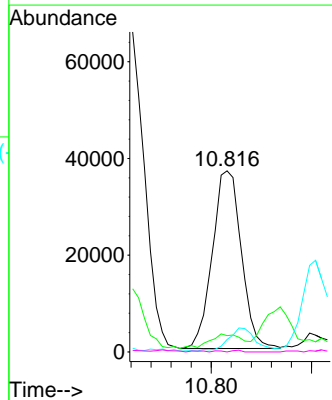
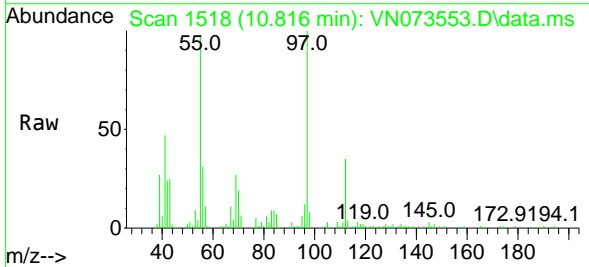


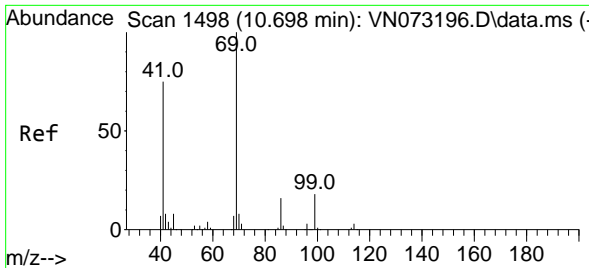
Tgt Ion: 75 Resp: 6729
 Ion Ratio Lower Upper
 75 100
 77 147.2 25.6 38.4#



#55
 1,1,2-Trichloroethane
 Concen: 19.452 ug/l
 RT: 10.816 min Scan# 1518
 Delta R.T. -0.017 min
 Lab File: VN073553.D
 Acq: 21 Jul 2022 13:59

Tgt Ion: 97 Resp: 73698
 Ion Ratio Lower Upper
 97 100
 83 7.2 66.2 99.4#
 85 6.6 43.9 65.9#
 99 0.0 50.6 76.0#



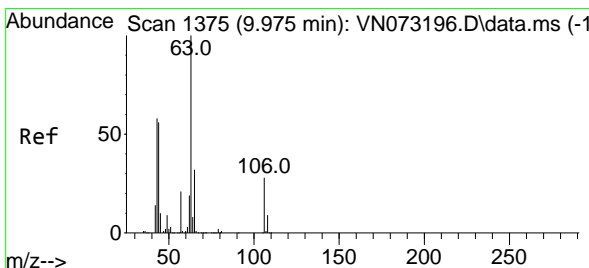
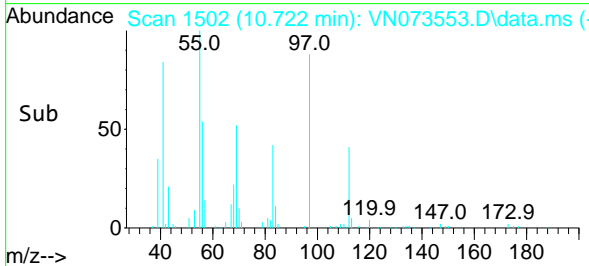
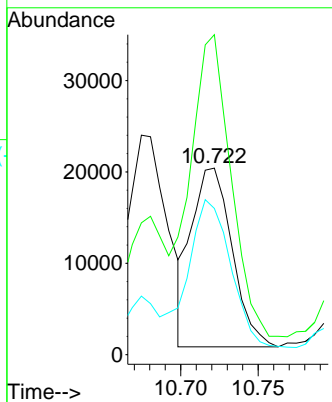
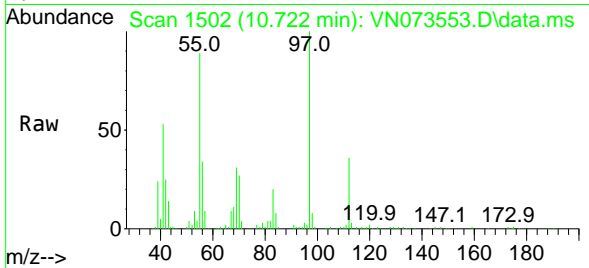


#56
 Ethyl methacrylate
 Concen: 5.834 ug/l
 RT: 10.722 min Scan# 1111
 Delta R.T. 0.024 min
 Lab File: VN073553.D
 Acq: 21 Jul 2022 13:59

Instrument :
 MSVOA_N
 ClientSampleId :
 AUD-1606DL

Tgt Ion: 69 Resp: 35726

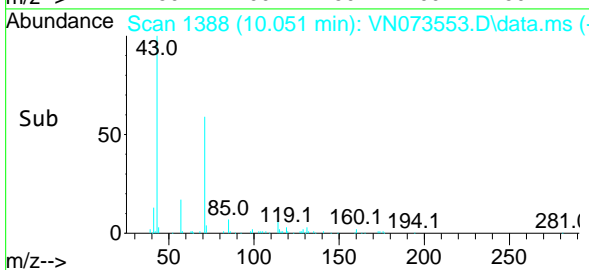
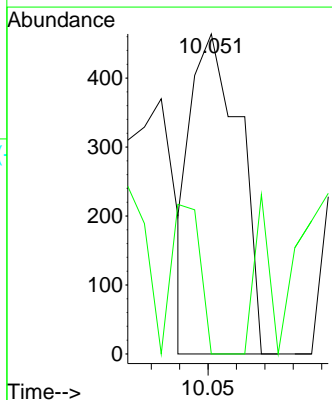
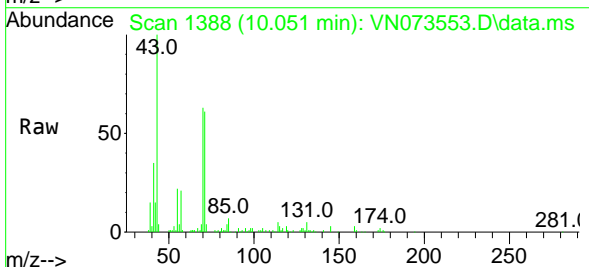
Ion	Ratio	Lower	Upper
69	100		
41	168.2	47.8	71.6#
39	87.2	27.3	40.9#

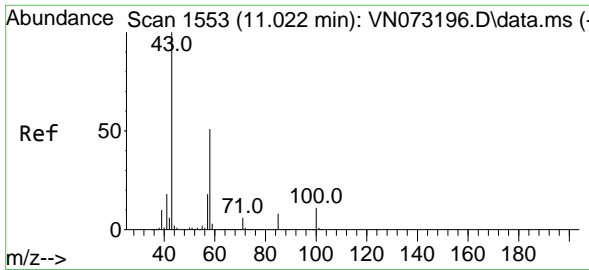


#58
 2-Chloroethyl Vinyl ether
 Concen: 0.201 ug/l
 RT: 10.051 min Scan# 1388
 Delta R.T. 0.076 min
 Lab File: VN073553.D
 Acq: 21 Jul 2022 13:59

Tgt Ion: 63 Resp: 549

Ion	Ratio	Lower	Upper
63	100		
106	27.3	24.6	36.8

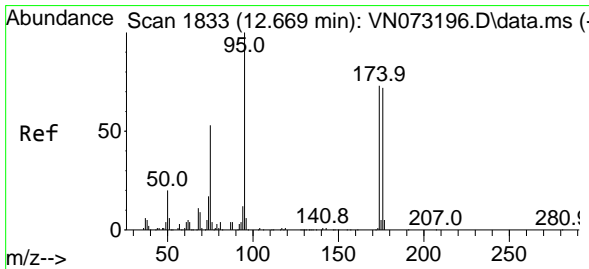
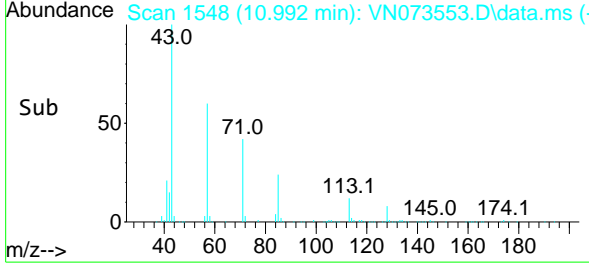
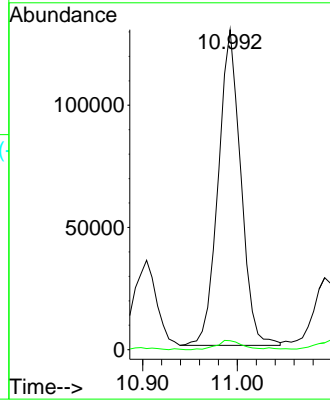
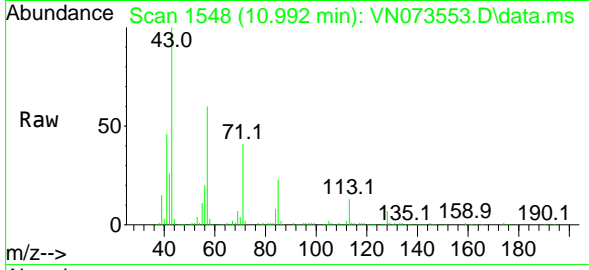




#59
 2-Hexanone
 Concen: 42.287 ug/l
 RT: 10.992 min Scan# 111
 Delta R.T. -0.030 min
 Lab File: VN073553.D
 Acq: 21 Jul 2022 13:59

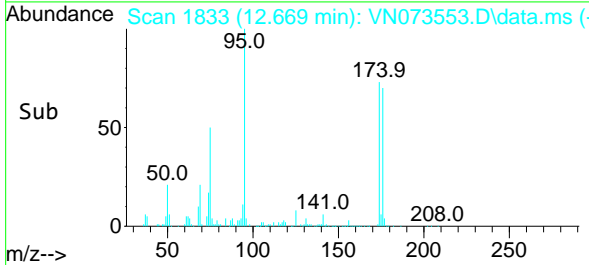
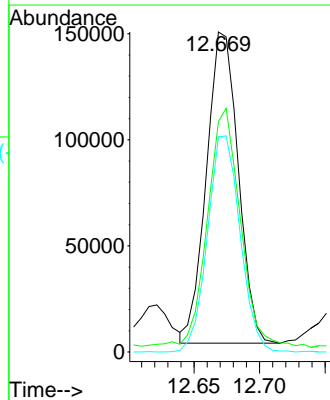
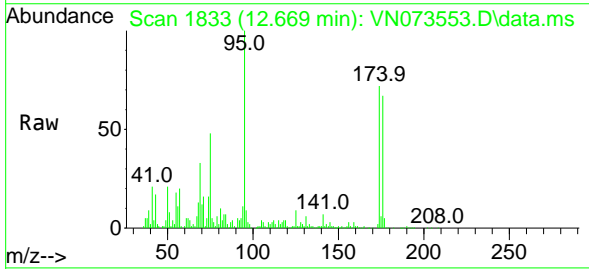
Instrument :
 MSVOA_N
 ClientSampleId :
 AUD-1606DL

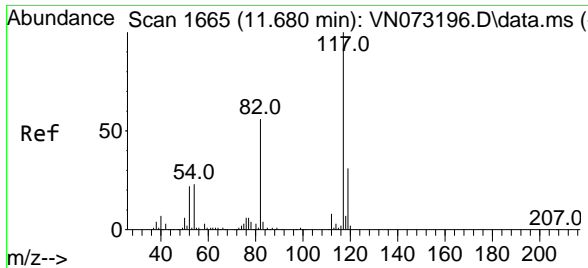
Tgt Ion: 43 Resp: 214192
 Ion Ratio Lower Upper
 43 100
 58 3.3 29.7 89.1#



#62
 4-Bromofluorobenzene
 Concen: 57.946 ug/l
 RT: 12.669 min Scan# 1833
 Delta R.T. -0.000 min
 Lab File: VN073553.D
 Acq: 21 Jul 2022 13:59

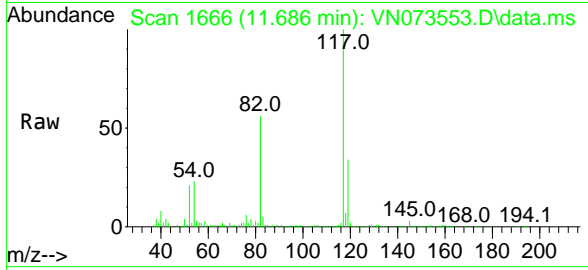
Tgt Ion: 95 Resp: 248021
 Ion Ratio Lower Upper
 95 100
 174 83.8 0.0 167.6
 176 71.2 0.0 163.4



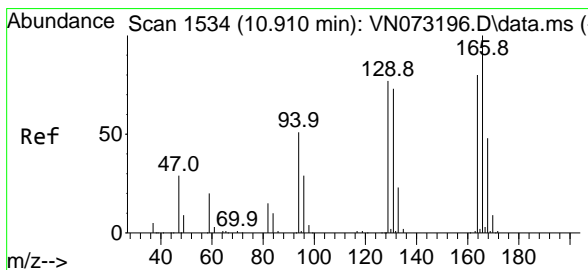
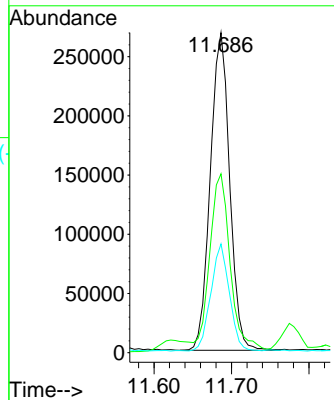
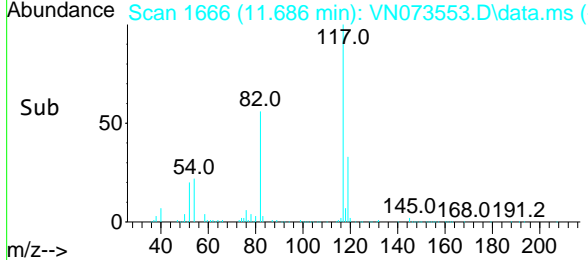


#63
 Chlorobenzene-d5
 Concen: 50.000 ug/l
 RT: 11.686 min Scan# 11
 Delta R.T. 0.006 min
 Lab File: VN073553.D
 Acq: 21 Jul 2022 13:59

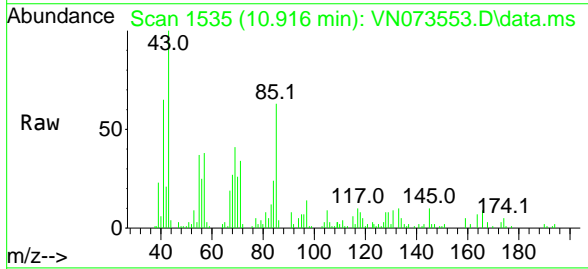
Instrument : MSVOA_N
 ClientSampleId : AUD-1606DL



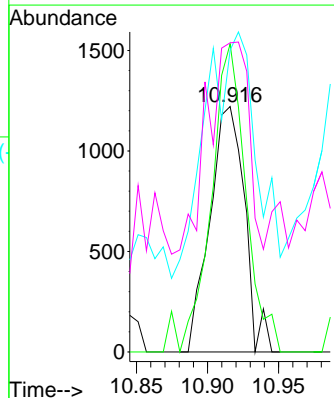
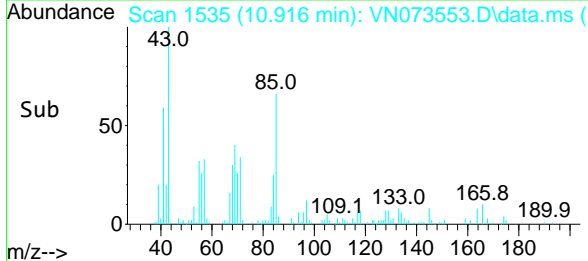
Tgt Ion:117 Resp: 465548
 Ion Ratio Lower Upper
 117 100
 82 52.8 44.2 66.2
 119 33.6 25.4 38.0

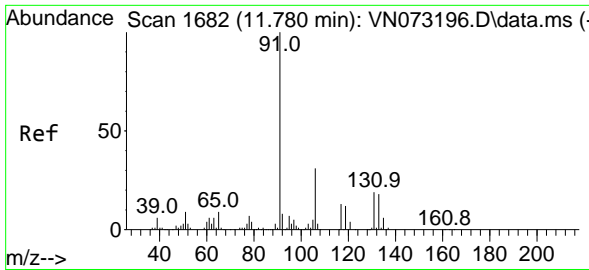


#64
 Tetrachloroethene
 Concen: 0.545 ug/l
 RT: 10.916 min Scan# 1535
 Delta R.T. 0.006 min
 Lab File: VN073553.D
 Acq: 21 Jul 2022 13:59



Tgt Ion:164 Resp: 2072
 Ion Ratio Lower Upper
 164 100
 166 125.5 104.2 156.2
 129 85.3 73.9 110.9
 131 84.4 69.4 104.2

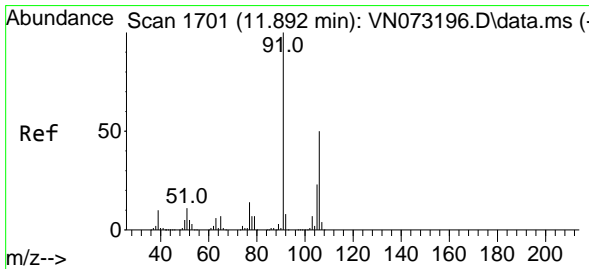
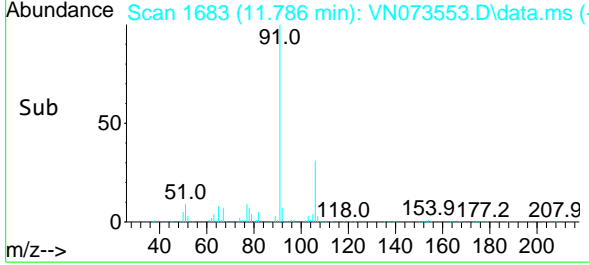
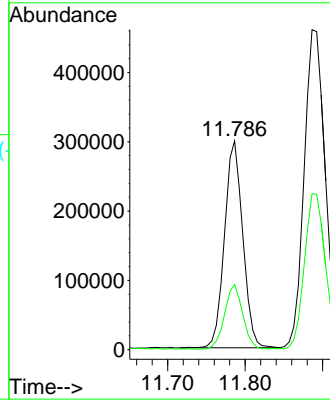
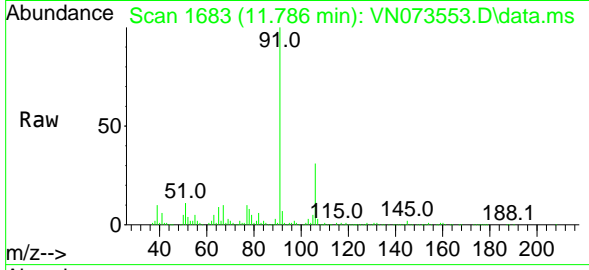




#67
 Ethyl Benzene
 Concen: 25.594 ug/l
 RT: 11.786 min Scan# 11
 Delta R.T. 0.006 min
 Lab File: VN073553.D
 Acq: 21 Jul 2022 13:59

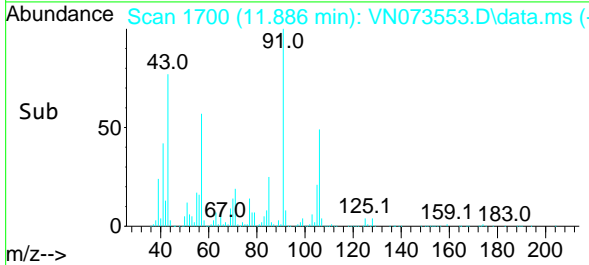
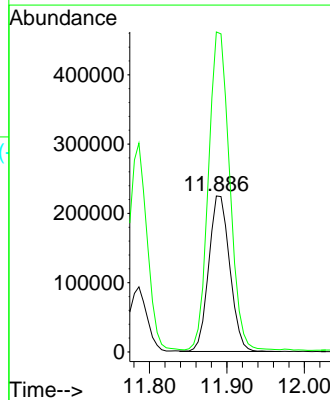
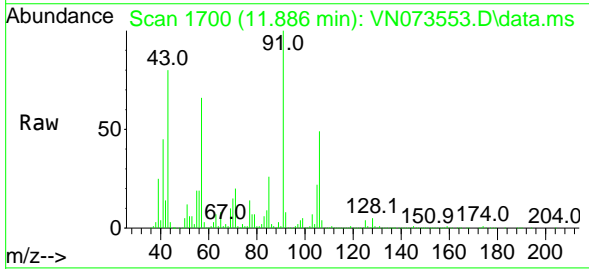
Instrument :
 MSVOA_N
 ClientSampleId :
 AUD-1606DL

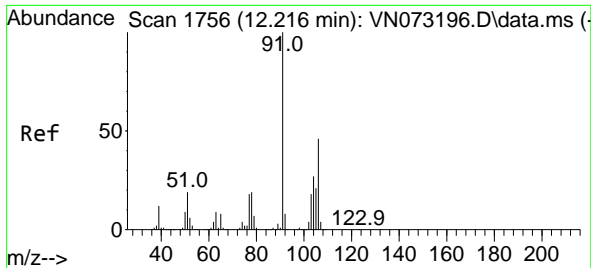
Tgt Ion: 91 Resp: 489236
 Ion Ratio Lower Upper
 91 100
 106 31.1 24.9 37.3



#68
 m/p-Xylenes
 Concen: 58.650 ug/l
 RT: 11.886 min Scan# 1700
 Delta R.T. -0.006 min
 Lab File: VN073553.D
 Acq: 21 Jul 2022 13:59

Tgt Ion: 106 Resp: 423101
 Ion Ratio Lower Upper
 106 100
 91 204.6 158.9 238.3

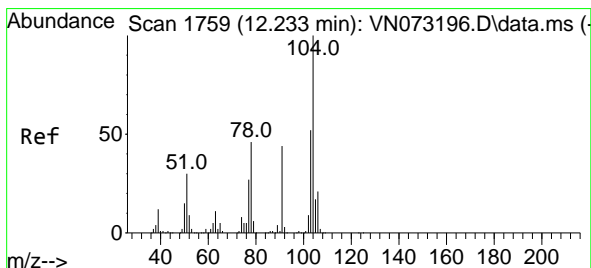
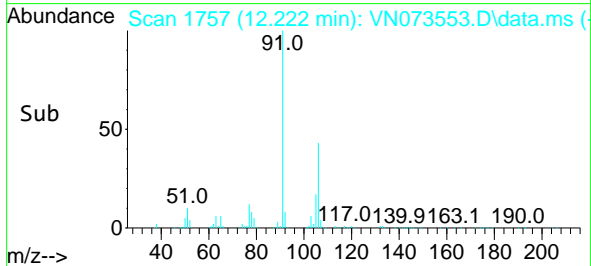
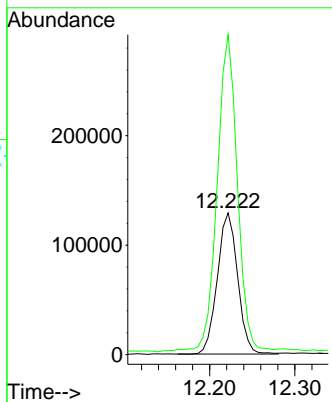
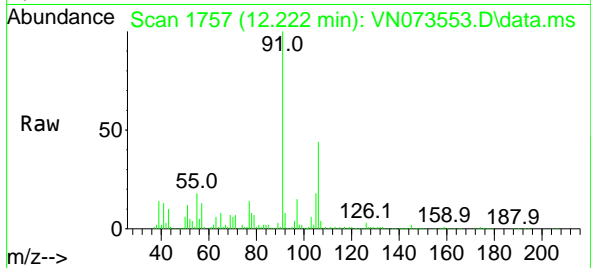




#69
 o-Xylene
 Concen: 29.090 ug/l
 RT: 12.222 min Scan# 1757
 Delta R.T. 0.006 min
 Lab File: VN073553.D
 Acq: 21 Jul 2022 13:59

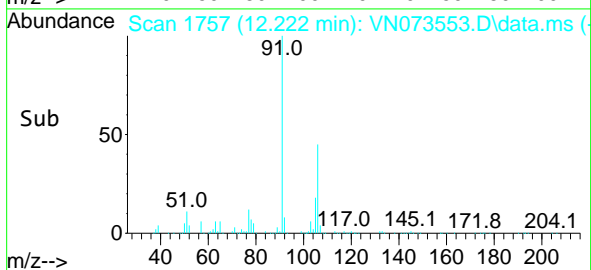
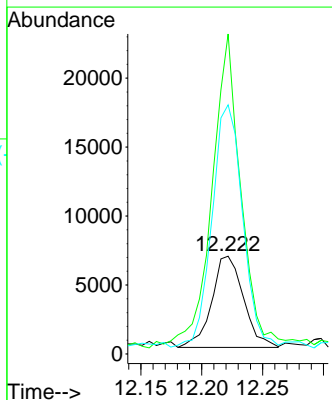
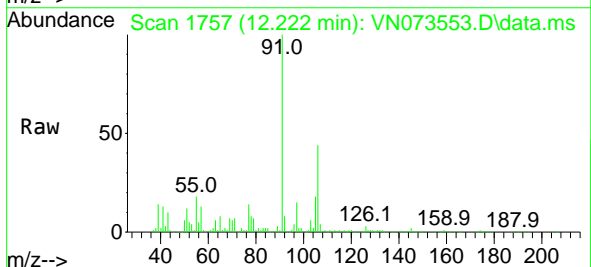
Instrument : MSVOA_N
 ClientSampleId : AUD-1606DL

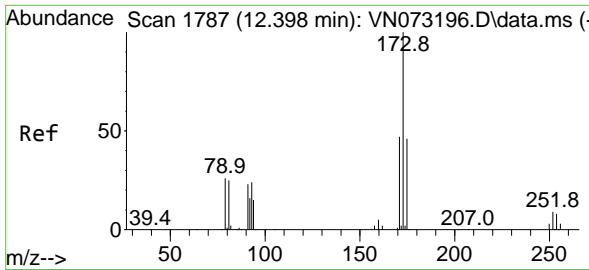
Tgt Ion:106 Resp: 214236
 Ion Ratio Lower Upper
 106 100
 91 223.4 106.0 318.0



#70
 Styrene
 Concen: 1.055 ug/l
 RT: 12.222 min Scan# 1757
 Delta R.T. -0.011 min
 Lab File: VN073553.D
 Acq: 21 Jul 2022 13:59

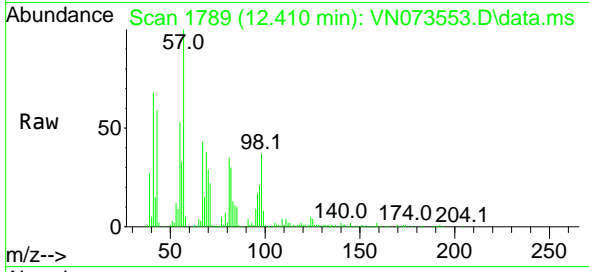
Tgt Ion:104 Resp: 12001
 Ion Ratio Lower Upper
 104 100
 78 320.8 39.5 59.3#
 103 255.7 44.0 66.0#



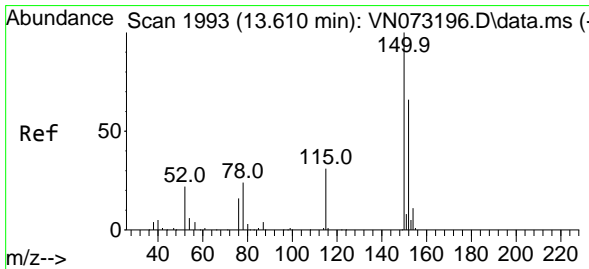
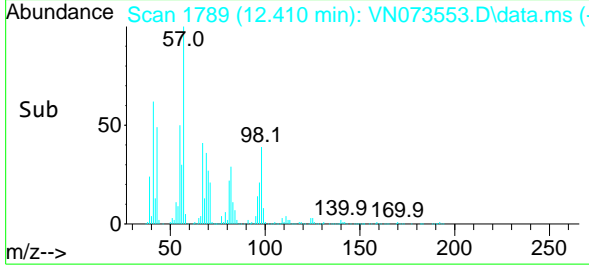
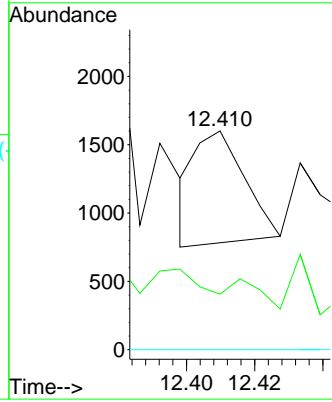


#71
 Bromoform
 Concen: 0.294 ug/l
 RT: 12.410 min Scan# 1789
 Delta R.T. 0.012 min
 Lab File: VN073553.D
 Acq: 21 Jul 2022 13:59

Instrument :
 MSVOA_N
 ClientSampleId :
 AUD-1606DL

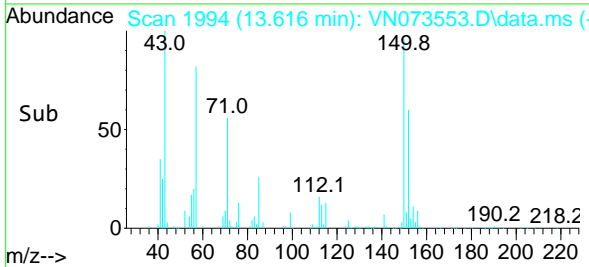
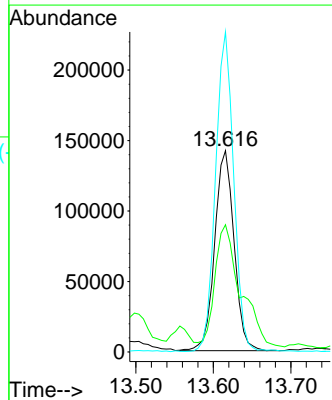
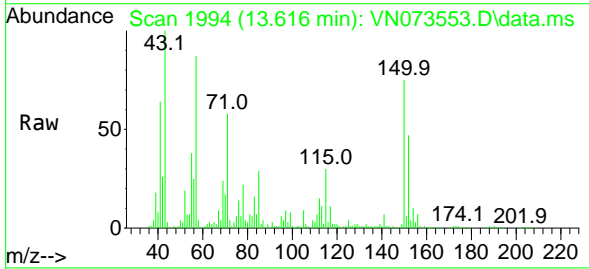


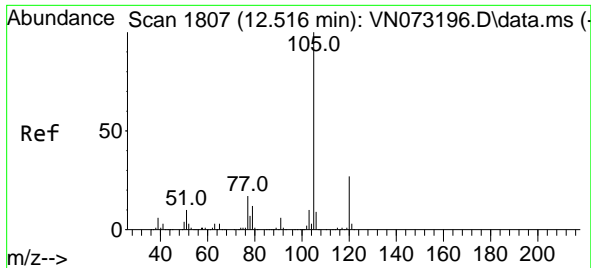
Tgt Ion:173 Resp: 834
 Ion Ratio Lower Upper
 173 100
 175 0.0 24.6 73.6#
 254 0.0 0.1 0.1#



#72
 1,4-Dichlorobenzene-d4
 Concen: 50.000 ug/l
 RT: 13.616 min Scan# 1994
 Delta R.T. 0.006 min
 Lab File: VN073553.D
 Acq: 21 Jul 2022 13:59

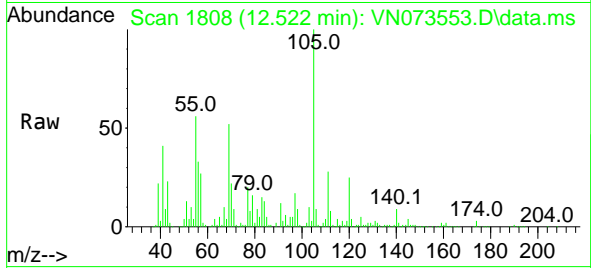
Tgt Ion:152 Resp: 246862
 Ion Ratio Lower Upper
 152 100
 115 80.7 28.9 86.7
 150 149.9 0.0 356.2



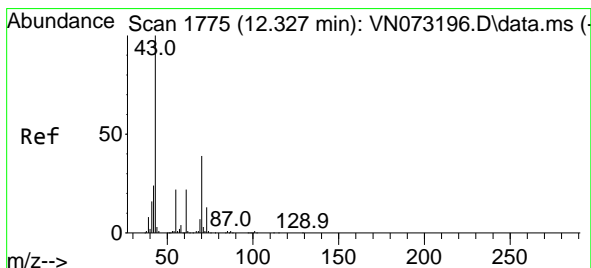
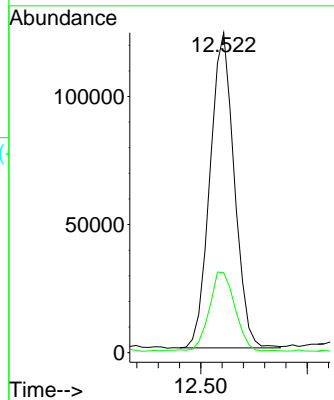
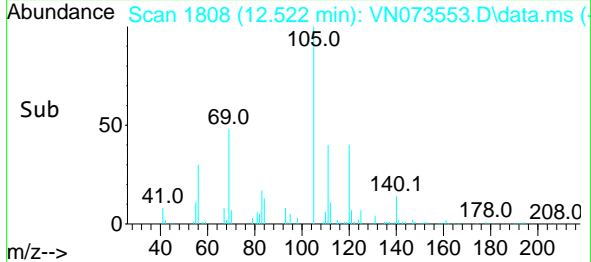


#73
 Isopropylbenzene
 Concen: 9.128 ug/l
 RT: 12.522 min Scan# 1808
 Delta R.T. 0.006 min
 Lab File: VN073553.D
 Acq: 21 Jul 2022 13:59

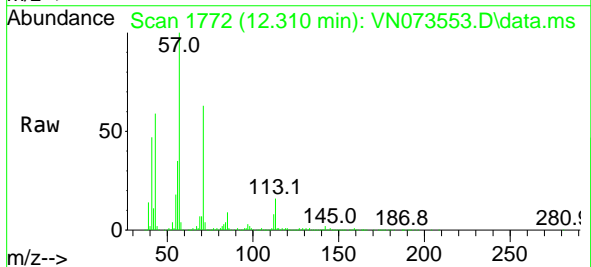
Instrument : MSVOA_N
 ClientSampleId : AUD-1606DL



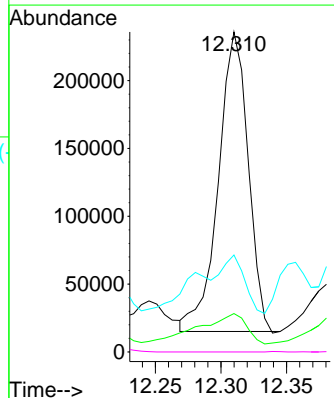
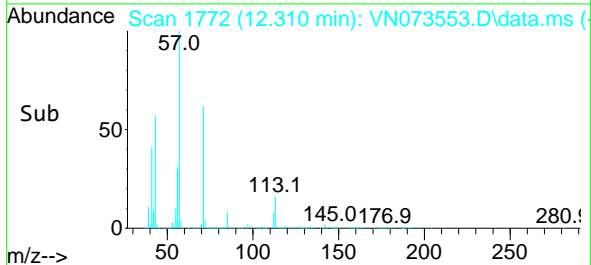
Tgt Ion:105 Resp: 194595
 Ion Ratio Lower Upper
 105 100
 120 26.9 13.5 40.4

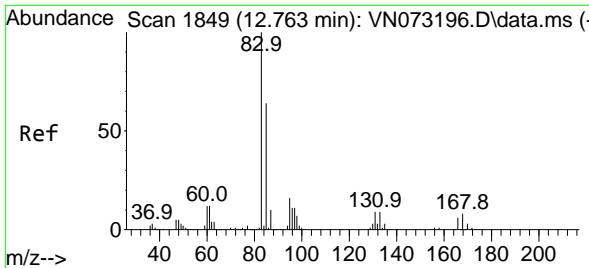


#74
 N-ethyl acetate
 Concen: 32.612 ug/l
 RT: 12.310 min Scan# 1772
 Delta R.T. -0.017 min
 Lab File: VN073553.D
 Acq: 21 Jul 2022 13:59



Tgt Ion: 43 Resp: 348106
 Ion Ratio Lower Upper
 43 100
 70 16.6 39.0 58.4#
 55 16.0 21.1 31.7#
 61 0.0 21.1 31.7#

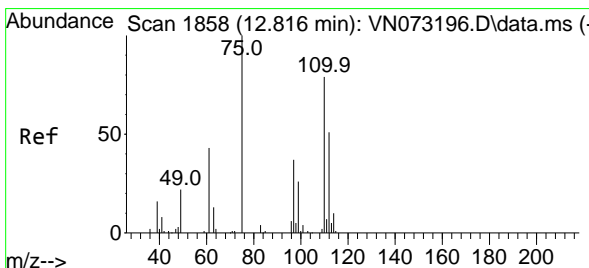
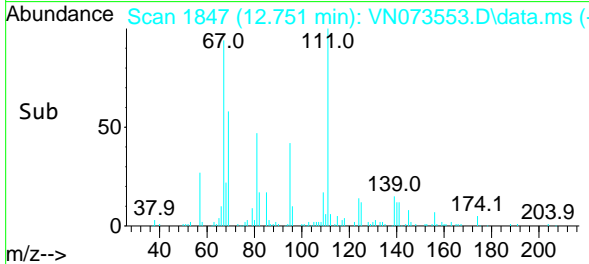
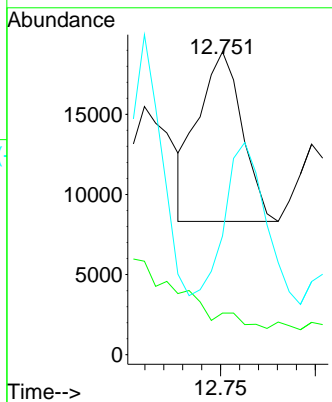
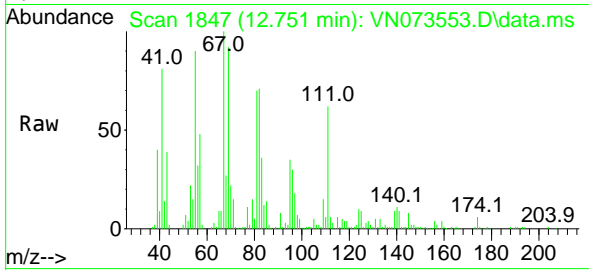




#75
 1,1,2,2-Tetrachloroethane
 Concen: 2.426 ug/l
 RT: 12.751 min Scan# 1847
 Delta R.T. -0.012 min
 Lab File: VN073553.D
 Acq: 21 Jul 2022 13:59

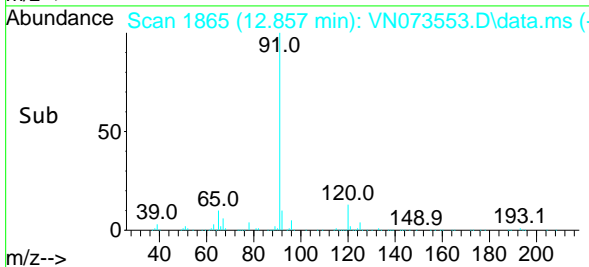
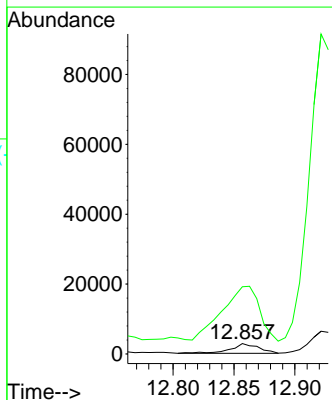
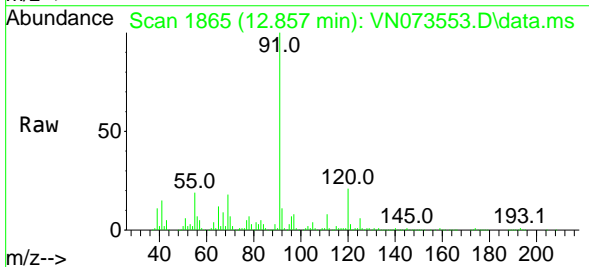
Instrument : MSVOA_N
 ClientSampleId : AUD-1606DL

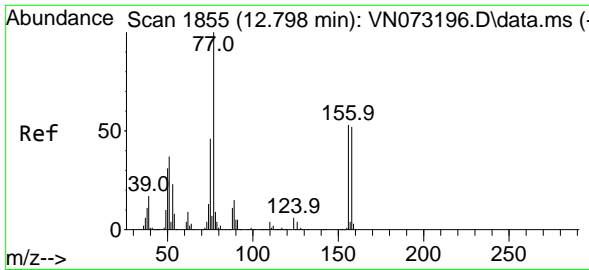
Tgt Ion	Resp	Lower	Upper
83	17161		
131	0.0	5.3	15.9#
85	0.0	32.3	96.9#



#76
 1,2,3-Trichloropropane
 Concen: 0.680 ug/l
 RT: 12.857 min Scan# 1865
 Delta R.T. 0.041 min
 Lab File: VN073553.D
 Acq: 21 Jul 2022 13:59

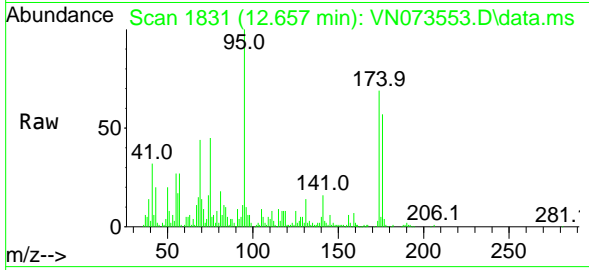
Tgt Ion	Resp	Lower	Upper
75	4388		
77	764.2	98.5	295.5#



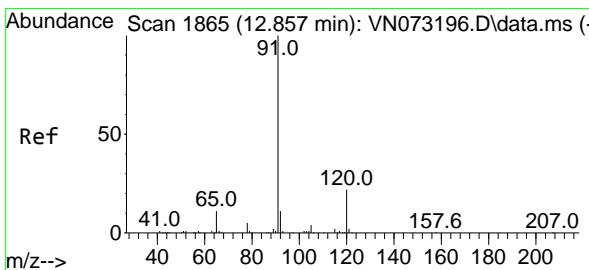
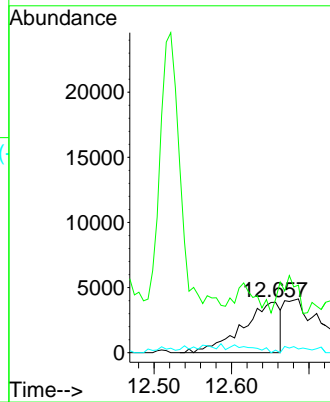
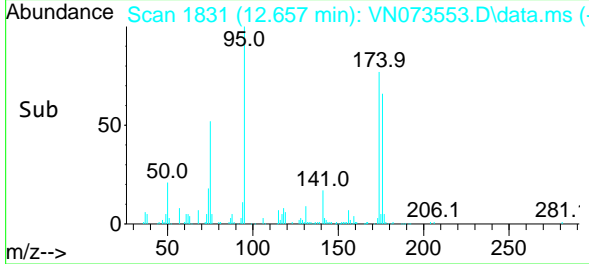


#77
 Bromobenzene
 Concen: 2.627 ug/l
 RT: 12.657 min Scan# 1831
 Delta R.T. -0.141 min
 Lab File: VN073553.D
 Acq: 21 Jul 2022 13:59

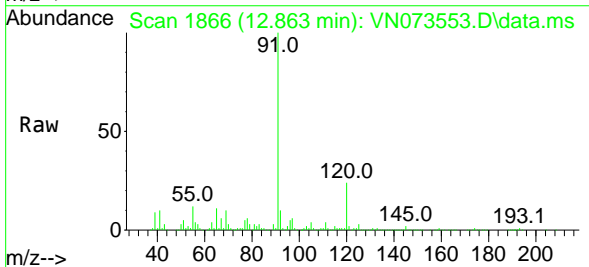
Instrument : MSVOA_N
 ClientSampleId : AUD-1606DL



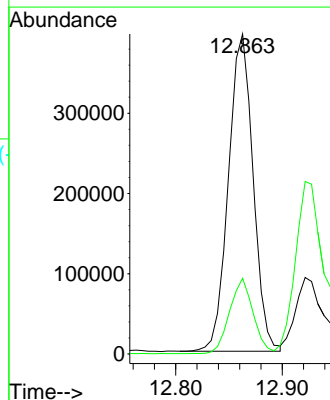
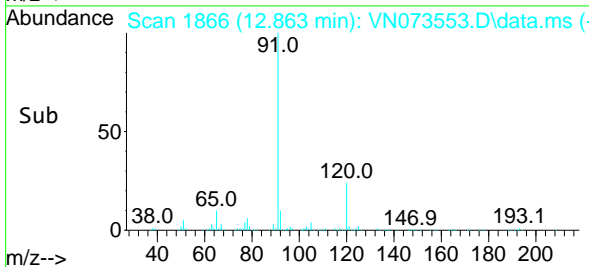
Tgt Ion:156 Resp: 13019
 Ion Ratio Lower Upper
 156 100
 77 0.0 100.5 301.5#
 158 6.6 48.9 146.6#

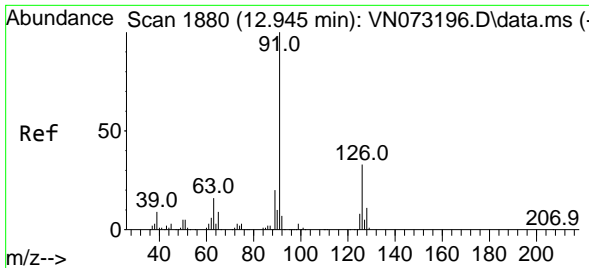


#78
 n-propylbenzene
 Concen: 26.929 ug/l
 RT: 12.863 min Scan# 1866
 Delta R.T. 0.006 min
 Lab File: VN073553.D
 Acq: 21 Jul 2022 13:59



Tgt Ion: 91 Resp: 637746
 Ion Ratio Lower Upper
 91 100
 120 22.6 11.9 35.5

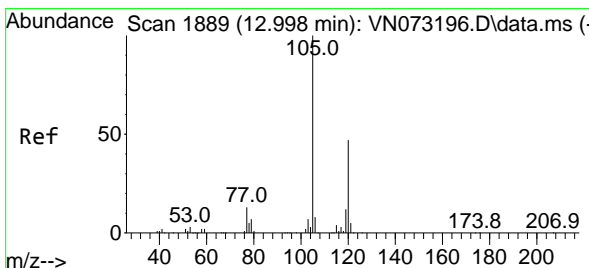
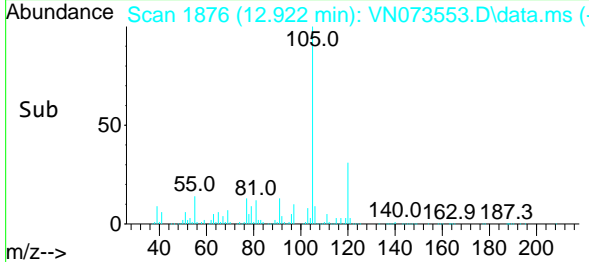
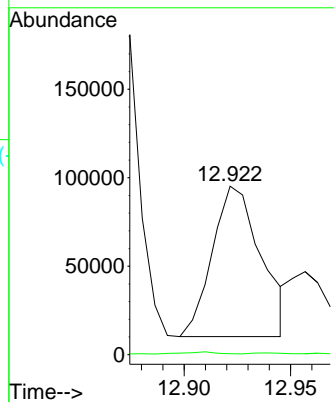
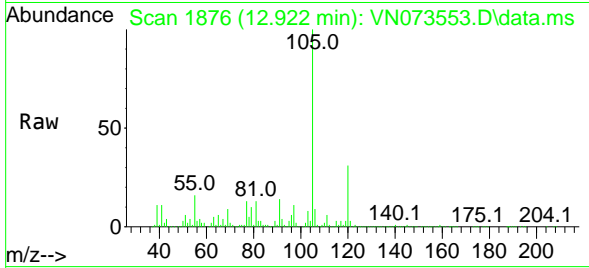




#79
 2-Chlorotoluene
 Concen: 9.046 ug/l
 RT: 12.922 min Scan# 1876
 Delta R.T. -0.023 min
 Lab File: VN073553.D
 Acq: 21 Jul 2022 13:59

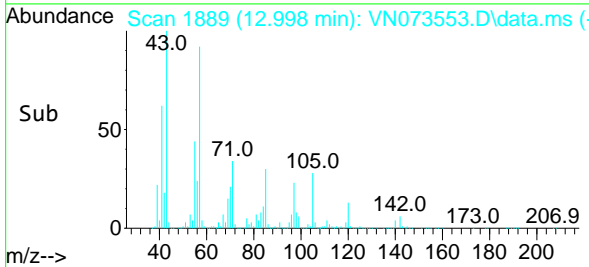
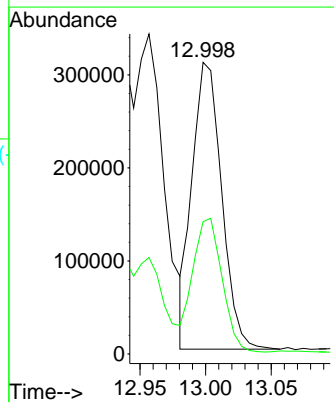
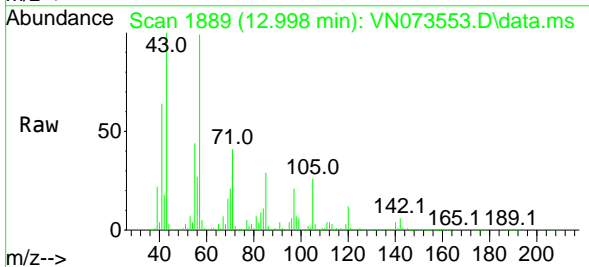
Instrument : MSVOA_N
 ClientSampleId : AUD-1606DL

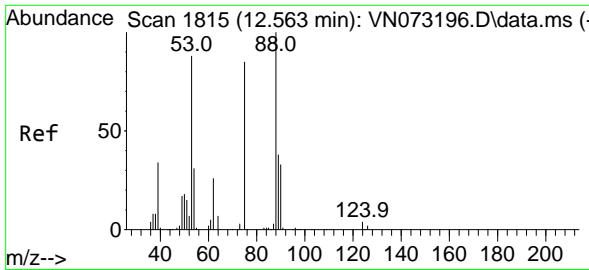
Tgt Ion: 91 Resp: 135583
 Ion Ratio Lower Upper
 91 100
 126 0.9 17.3 51.9#



#80
 1,3,5-Trimethylbenzene
 Concen: 27.760 ug/l
 RT: 12.998 min Scan# 1889
 Delta R.T. 0.000 min
 Lab File: VN073553.D
 Acq: 21 Jul 2022 13:59

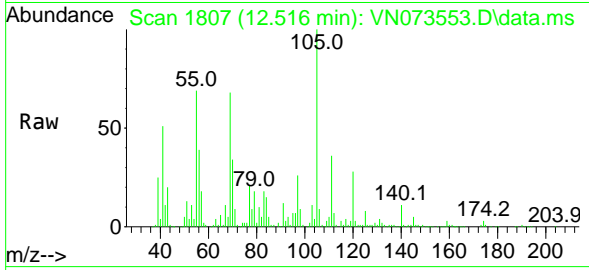
Tgt Ion: 105 Resp: 482349
 Ion Ratio Lower Upper
 105 100
 120 46.2 24.9 74.7



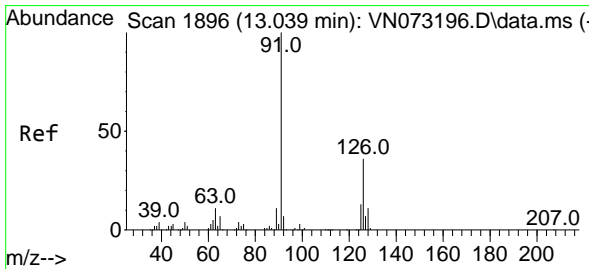
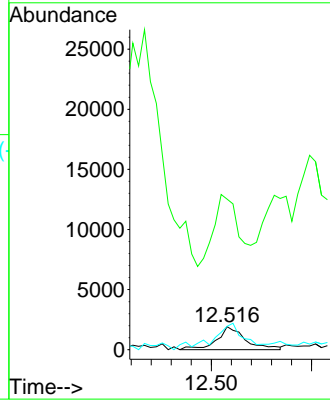
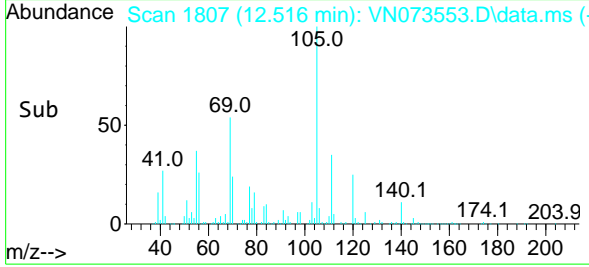


#81
 trans-1,4-Dichloro-2-butene
 Concen: 1.607 ug/l
 RT: 12.516 min Scan# 1815
 Delta R.T. -0.047 min
 Lab File: VN073553.D
 Acq: 21 Jul 2022 13:59

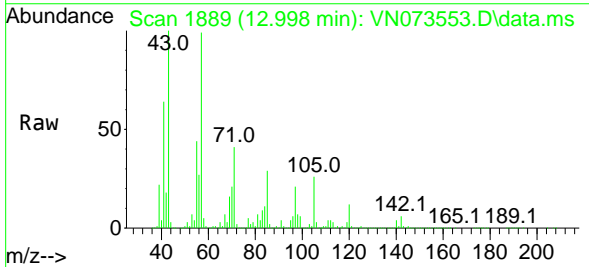
Instrument : MSVOA_N
 ClientSampleId : AUD-1606DL



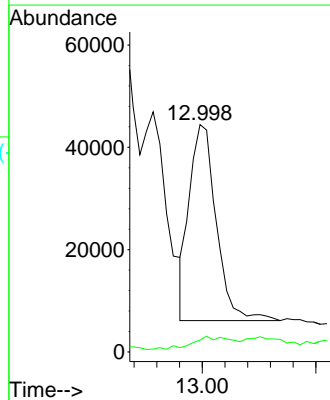
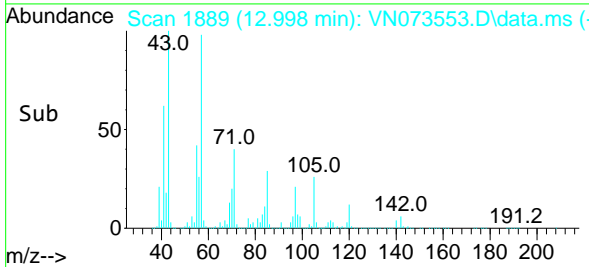
Tgt Ion: 75 Resp: 3783
 Ion Ratio Lower Upper
 75 100
 53 271.9 78.0 117.0#
 89 86.6 37.2 55.8#

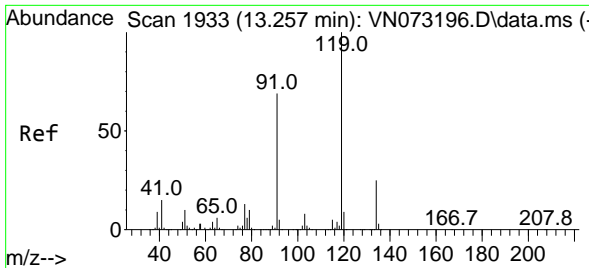


#82
 4-Chlorotoluene
 Concen: 4.338 ug/l
 RT: 12.998 min Scan# 1889
 Delta R.T. -0.041 min
 Lab File: VN073553.D
 Acq: 21 Jul 2022 13:59



Tgt Ion: 91 Resp: 62945
 Ion Ratio Lower Upper
 91 100
 126 9.3 17.2 51.6#



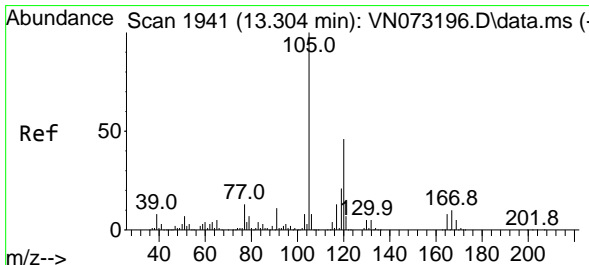
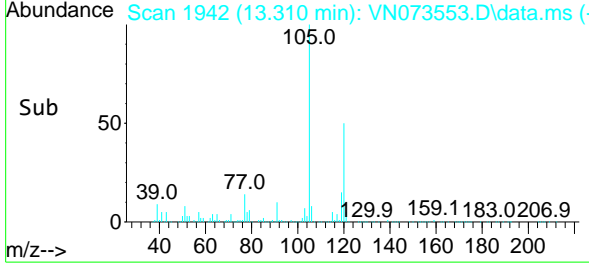
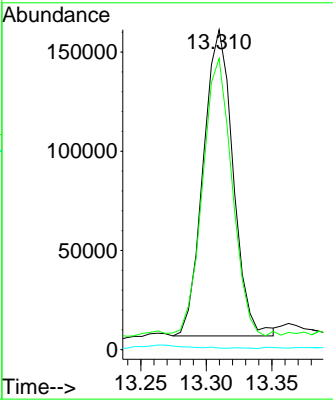
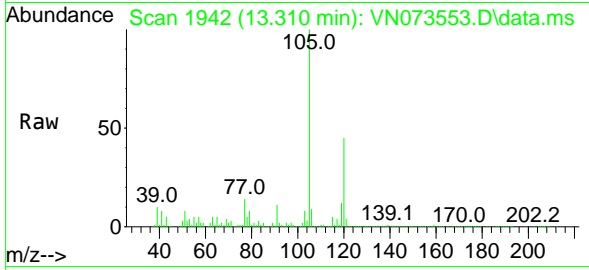


#83
 tert-Butylbenzene
 Concen: 15.693 ug/l
 RT: 13.310 min Scan# 1942
 Delta R.T. 0.053 min
 Lab File: VN073553.D
 Acq: 21 Jul 2022 13:59

Instrument : MSVOA_N
 ClientSampleId : AUD-1606DL

Tgt Ion:119 Resp: 244451

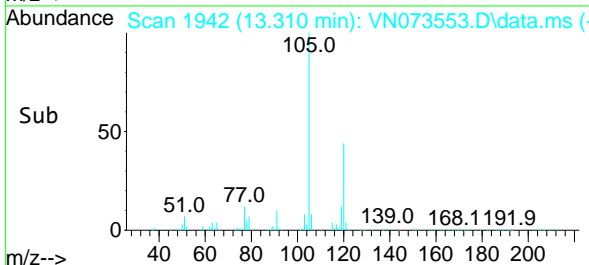
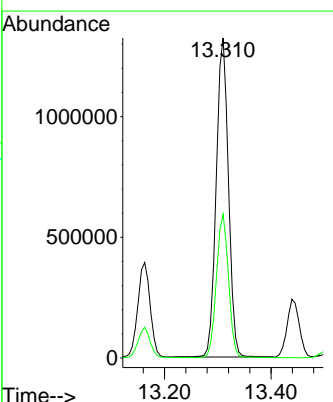
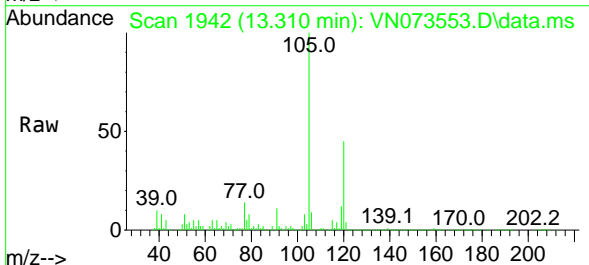
Ion	Ratio	Lower	Upper
119	100		
91	89.3	31.6	94.8
134	0.0	13.7	41.1#

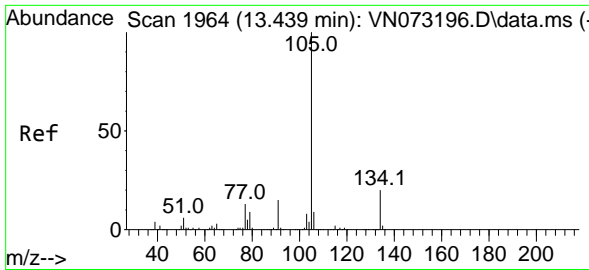


#84
 1,2,4-Trimethylbenzene
 Concen: 121.137 ug/l
 RT: 13.310 min Scan# 1942
 Delta R.T. 0.006 min
 Lab File: VN073553.D
 Acq: 21 Jul 2022 13:59

Tgt Ion:105 Resp: 2101442

Ion	Ratio	Lower	Upper
105	100		
120	44.6	23.3	69.8

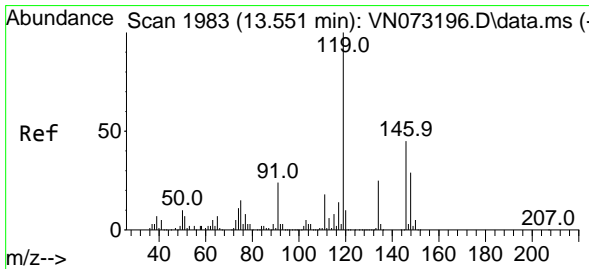
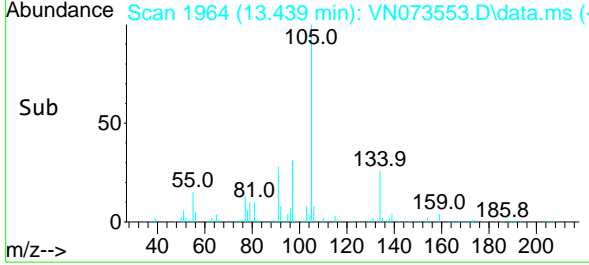
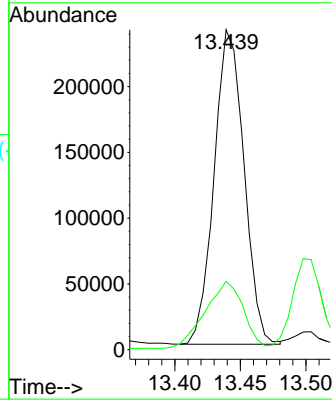
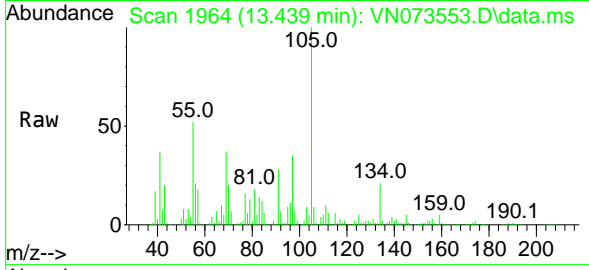




#85
 sec-Butylbenzene
 Concen: 18.075 ug/l
 RT: 13.439 min Scan# 1964
 Delta R.T. 0.000 min
 Lab File: VN073553.D
 Acq: 21 Jul 2022 13:59

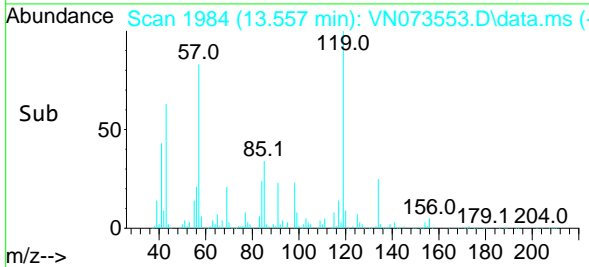
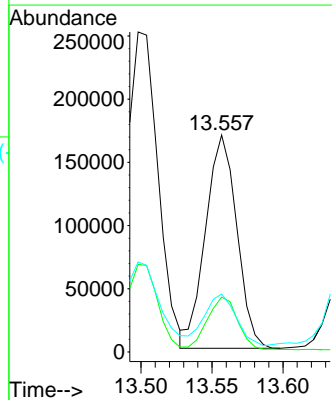
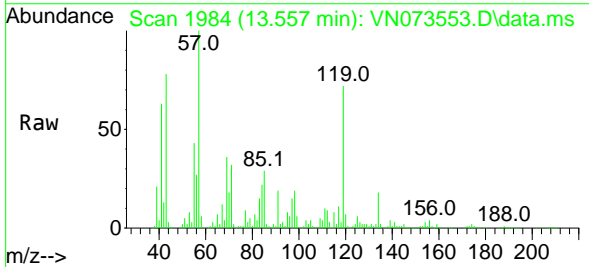
Instrument : MSVOA_N
 ClientSampleId : AUD-1606DL

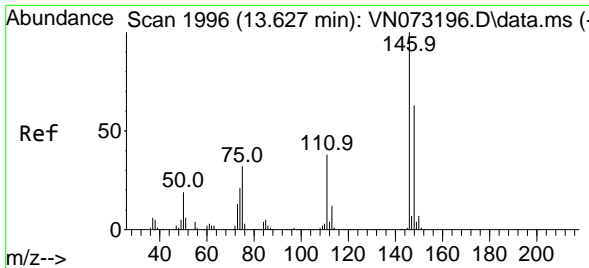
Tgt Ion:105 Resp: 378084
 Ion Ratio Lower Upper
 105 100
 134 27.5 10.4 31.1



#86
 p-Isopropyltoluene
 Concen: 15.277 ug/l
 RT: 13.557 min Scan# 1984
 Delta R.T. 0.006 min
 Lab File: VN073553.D
 Acq: 21 Jul 2022 13:59

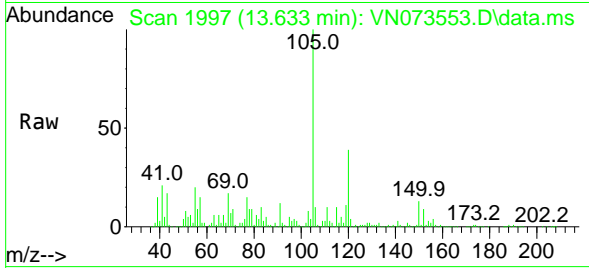
Tgt Ion:119 Resp: 258136
 Ion Ratio Lower Upper
 119 100
 134 24.1 13.3 39.8
 91 24.1 11.3 33.9



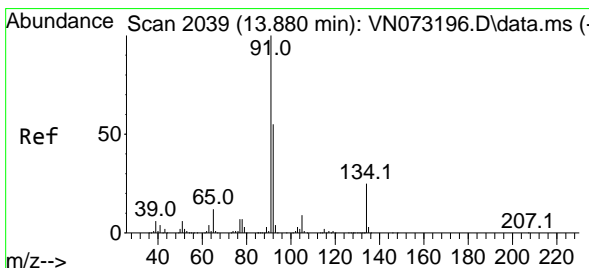
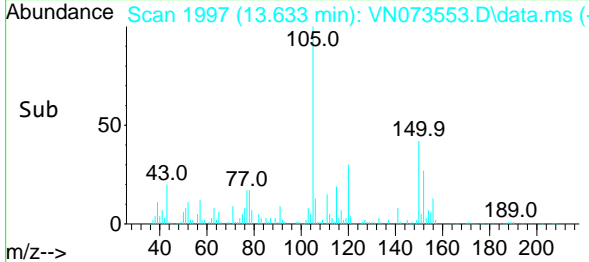
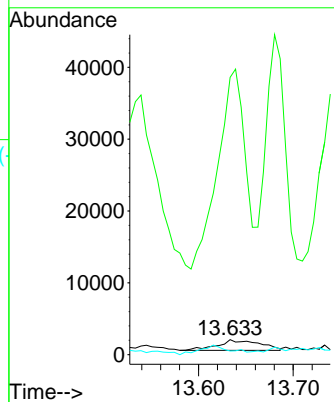


#88
 1,4-Dichlorobenzene
 Concen: 0.505 ug/l
 RT: 13.633 min Scan# 1996
 Delta R.T. 0.006 min
 Lab File: VN073553.D
 Acq: 21 Jul 2022 13:59

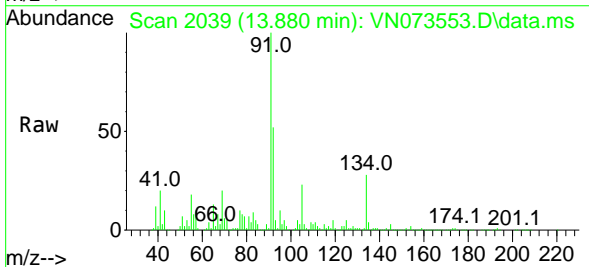
Instrument : MSVOA_N
 ClientSampleId : AUD-1606DL



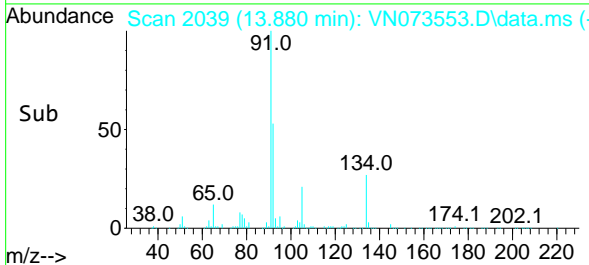
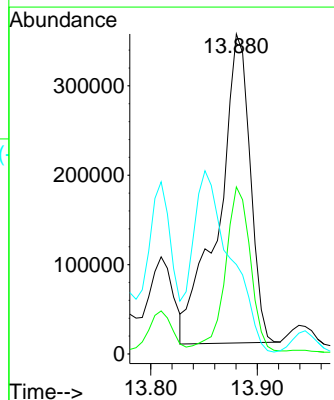
Tgt Ion:146 Resp: 4500
 Ion Ratio Lower Upper
 146 100
 111 1227.0 19.1 57.1#
 148 0.0 31.4 94.3#

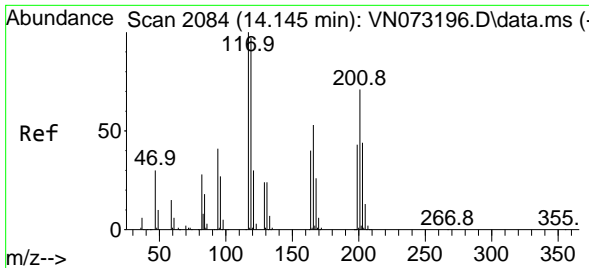


#89
 n-Butylbenzene
 Concen: 50.022 ug/l
 RT: 13.880 min Scan# 2039
 Delta R.T. 0.000 min
 Lab File: VN073553.D
 Acq: 21 Jul 2022 13:59



Tgt Ion: 91 Resp: 704327
 Ion Ratio Lower Upper
 91 100
 92 43.0 26.9 80.7
 134 0.0 13.6 40.8#

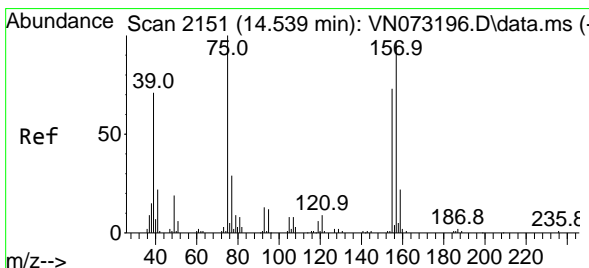
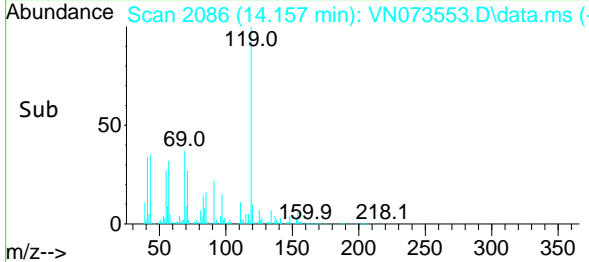
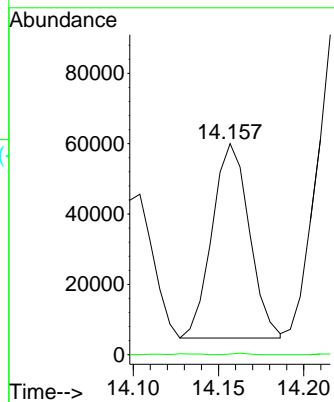
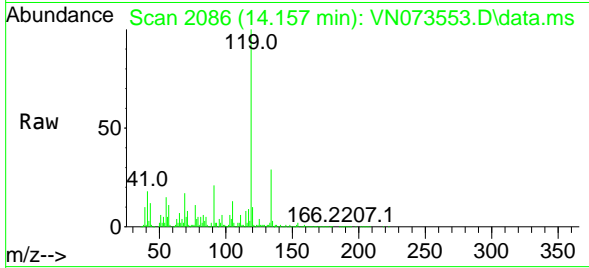




#90
 Hexachloroethane
 Concen: 26.658 ug/l
 RT: 14.157 min Scan# 2086
 Delta R.T. 0.012 min
 Lab File: VN073553.D
 Acq: 21 Jul 2022 13:59

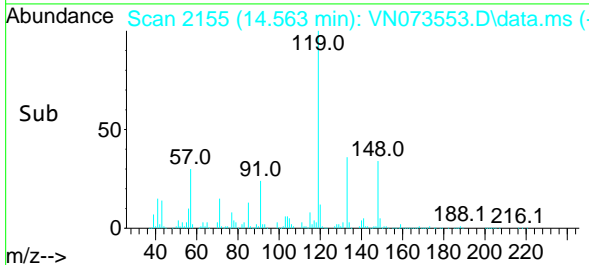
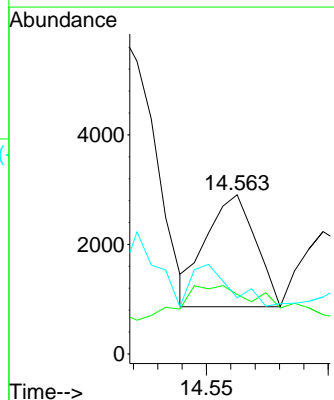
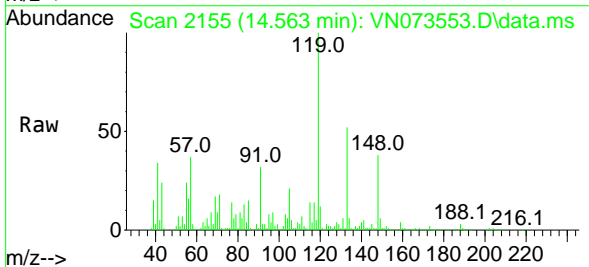
Instrument :
 MSVOA_N
 ClientSampleId :
 AUD-1606DL

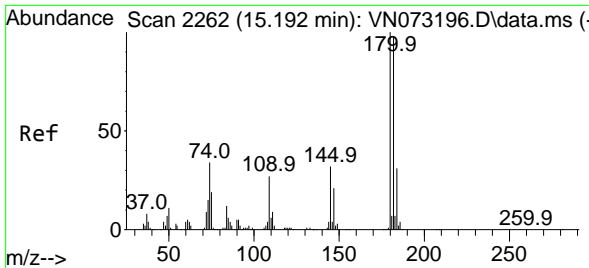
Tgt Ion:117 Resp: 83945
 Ion Ratio Lower Upper
 117 100
 201 0.3 40.6 122.0#



#92
 1,2-Dibromo-3-Chloropropane
 Concen: 1.678 ug/l
 RT: 14.563 min Scan# 2155
 Delta R.T. 0.024 min
 Lab File: VN073553.D
 Acq: 21 Jul 2022 13:59

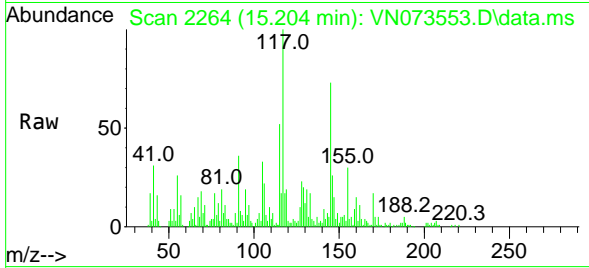
Tgt Ion: 75 Resp: 2885
 Ion Ratio Lower Upper
 75 100
 155 55.8 44.9 134.5
 157 30.5 59.0 176.8#



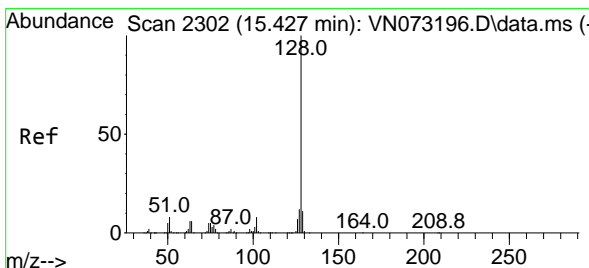
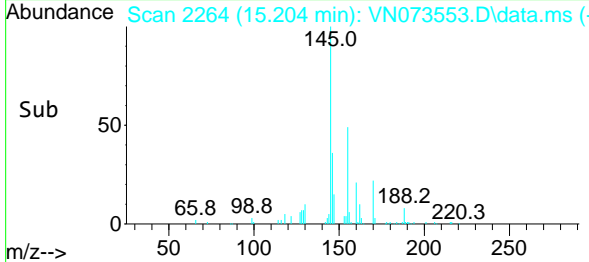
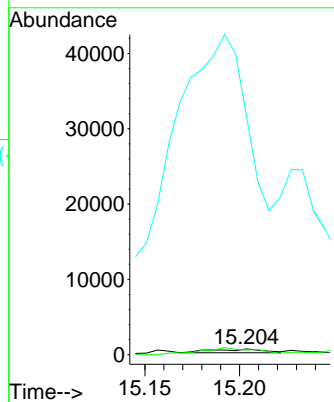


#93
 1,2,4-Trichlorobenzene
 Concen: 0.200 ug/l
 RT: 15.204 min Scan# 21
 Delta R.T. 0.012 min
 Lab File: VN073553.D
 Acq: 21 Jul 2022 13:59

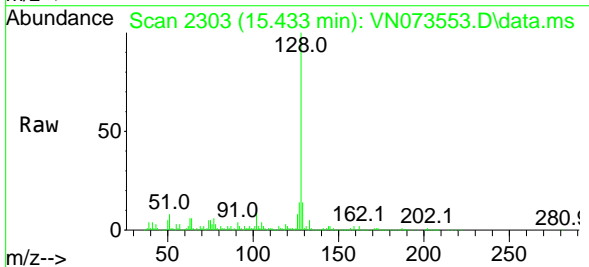
Instrument :
 MSVOA_N
 ClientSampleId :
 AUD-1606DL



Tgt Ion:180 Resp: 945
 Ion Ratio Lower Upper
 180 100
 182 202.2 47.5 142.5#
 145 7893.2 14.5 43.5#



#95
 Naphthalene
 Concen: 29.710 ug/l
 RT: 15.433 min Scan# 2303
 Delta R.T. 0.006 min
 Lab File: VN073553.D
 Acq: 21 Jul 2022 13:59



Tgt Ion:128 Resp: 565267
 Ion Ratio Lower Upper
 128 100
 127 13.1 10.3 15.5
 129 13.9 8.6 13.0#

