

Data Path : Z:\voasrv\HPCHEM1\MSVOA_N\Data\VN072123\
 Data File : VN078626.D
 Acq On : 21 Jul 2023 20:15
 Operator : JC\MD
 Sample : PB155423TB
 Misc : 5.0mL/MSVOA_N/WATER
 ALS Vial : 24 Sample Multiplier: 1

Instrument :
 MSVOA_N
 ClientSampleId :
 PB155423TB

Quant Time: Jul 21 23:31:53 2023
 Quant Method : Z:\voasrv\HPCHEM1\MSVOA_N\methods\82N071023W.M
 Quant Title : SW846 8260
 QLast Update : Mon Jul 10 16:13:53 2023
 Response via : Initial Calibration

Compound	R.T.	QIon	Response	Conc	Units	Dev(Min)
Internal Standards						
1) Pentafluorobenzene	8.230	168	465423	50.000	ug/l	0.00
34) 1,4-Difluorobenzene	9.106	114	837554	50.000	ug/l	0.00
63) Chlorobenzene-d5	11.870	117	811238	50.000	ug/l	0.00
72) 1,4-Dichlorobenzene-d4	13.800	152	316098	50.000	ug/l	0.00
System Monitoring Compounds						
33) 1,2-Dichloroethane-d4	8.588	65	301993	48.400	ug/l	0.00
Spiked Amount	50.000	Range	74 - 125	Recovery	=	96.800%
35) Dibromofluoromethane	8.177	113	293554	51.631	ug/l	0.00
Spiked Amount	50.000	Range	75 - 124	Recovery	=	103.260%
50) Toluene-d8	10.571	98	1007112	46.890	ug/l	0.00
Spiked Amount	50.000	Range	86 - 113	Recovery	=	93.780%
62) 4-Bromofluorobenzene	12.853	95	365364	55.226	ug/l	0.00
Spiked Amount	50.000	Range	83 - 123	Recovery	=	110.460%
Target Compounds						
						Qvalue
3) Chloromethane	2.371	50	2561	0.413	ug/l #	86
5) Bromomethane	2.971	94	2487	Below Cal		95
6) Chloroethane	3.118	64	3571	Below Cal	#	64
10) Methyl Iodide	4.612	142	1824	0.261	ug/l #	70
16) Acetone	4.447	43	76268	39.241	ug/l	94
18) Methyl Acetate	5.041	43	7883	0.958	ug/l #	70
20) Methylene Chloride	5.289	84	21568	2.712	ug/l	90
25) 2-Butanone	7.494	43	47622	15.565	ug/l #	85
29) Tetrahydrofuran	7.865	42	1670	0.832	ug/l #	53
31) Cyclohexane	8.235	56	10392	1.232	ug/l #	4
36) 1,1-Dichloropropene	8.235	75	38449	4.683	ug/l #	49
37) Ethyl Acetate	7.577	43	15150	2.214	ug/l #	96
38) Carbon Tetrachloride	8.230	117	49750	5.576	ug/l #	17
42) 1,2-Dichloroethane	8.694	62	2589	0.313	ug/l	79
43) Isopropyl Acetate	8.700	43	355540	31.556	ug/l #	81
48) Methyl methacrylate	9.747	41	281037	53.839	ug/l #	28
49) 1,4-Dioxane	9.665	88	117	1.028	ug/l #	1
51) 4-Methyl-2-Pentanone	10.453	43	166144	24.791	ug/l	92
54) cis-1,3-Dichloropropene	10.365	75	133762	14.094	ug/l #	68
56) Ethyl methacrylate	10.988	69	4900	0.590	ug/l #	1
57) 1,3-Dichloropropane	11.212	76	17929	1.775	ug/l #	42
59) 2-Hexanone	11.206	43	194623	40.861	ug/l #	50
65) Chlorobenzene	11.900	112	3986	0.220	ug/l	99
68) m/p-Xylenes	12.070	106	3974	0.351	ug/l	83
74) N-amyl acetate	12.494	43	4152	0.406	ug/l #	40
75) 1,1,2,2-Tetrachloroethane	12.941	83	626	Below Cal	#	38
76) 1,2,3-Trichloropropane	12.853	75	193922	25.381	ug/l #	1
77) Bromobenzene	12.976	156	532	Below Cal	#	65
81) trans-1,4-Dichloro-2-b...	12.853	75	193922	66.696	ug/l #	15
84) 1,2,4-Trimethylbenzene	13.488	105	9295	0.408	ug/l	99
90) Hexachloroethane	14.335	117	700	Below Cal	#	21
92) 1,2-Dibromo-3-Chloropr...	14.717	75	223	Below Cal		71
94) Hexachlorobutadiene	15.500	225	609	Below Cal	#	69
95) Naphthalene	15.647	128	12549	1.014	ug/l #	86
96) 1,2,3-Trichlorobenzene	15.841	180	1369	0.329	ug/l #	73

Data Path : Z:\voasrv\HPCHEM1\MSVOA_N\Data\VN072123\
Data File : VN078626.D
Acq On : 21 Jul 2023 20:15
Operator : JC\MD
Sample : PB155423TB
Misc : 5.0mL/MSVOA_N/WATER
ALS Vial : 24 Sample Multiplier: 1

Instrument :
MSVOA_N
ClientSampleId :
PB155423TB

Quant Time: Jul 21 23:31:53 2023
Quant Method : Z:\voasrv\HPCHEM1\MSVOA_N\methods\82N071023W.M
Quant Title : SW846 8260
QLast Update : Mon Jul 10 16:13:53 2023
Response via : Initial Calibration

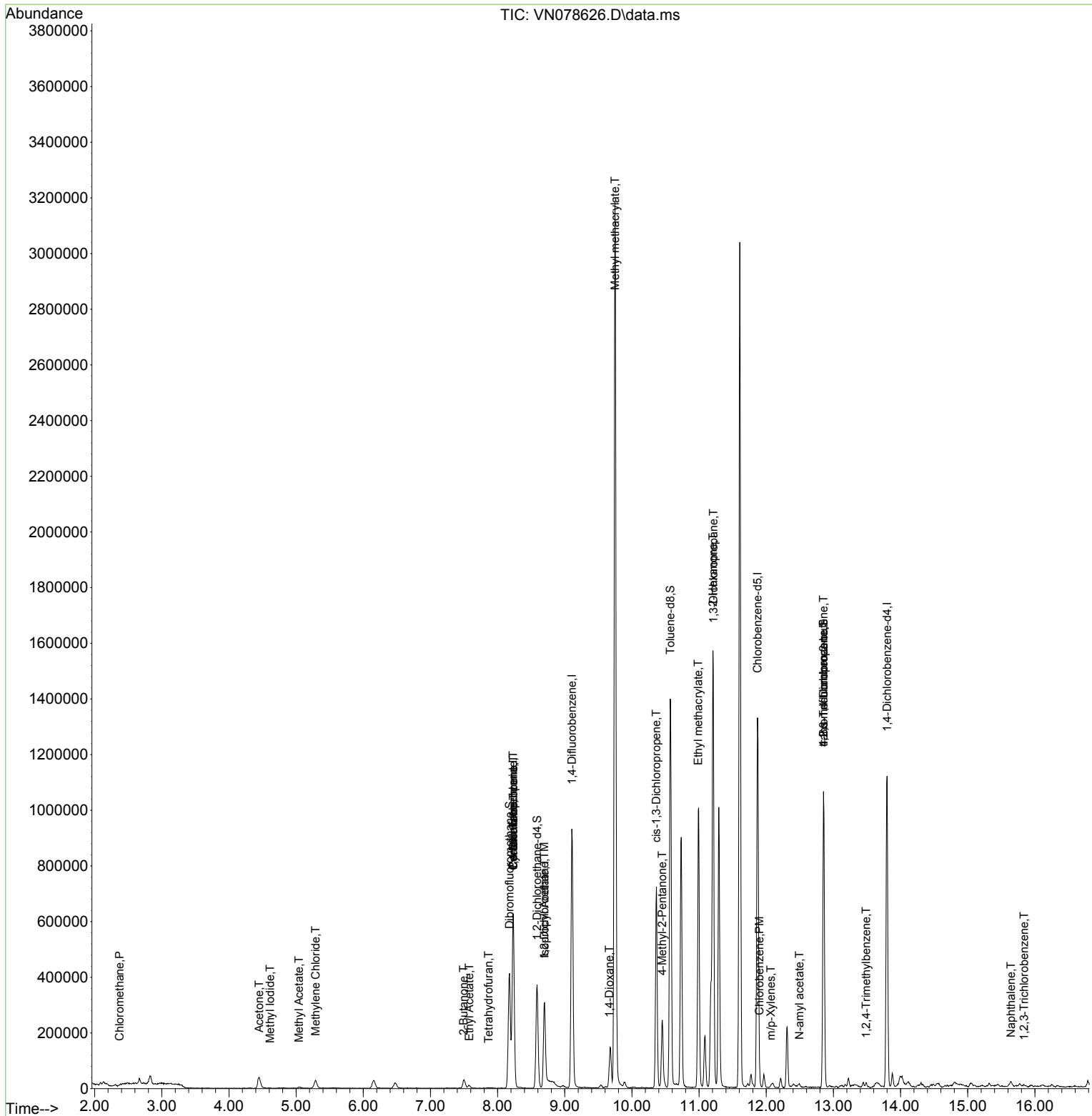
Compound	R.T.	QIon	Response	Conc	Units	Dev(Min)
----------	------	------	----------	------	-------	----------

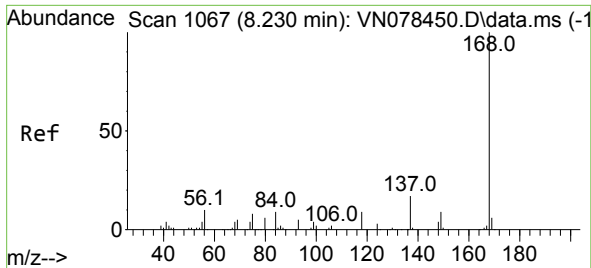
(#) = qualifier out of range (m) = manual integration (+) = signals summed

Data Path : Z:\voasrv\HPCHEM1\MSVOA_N\Data\VN072123\
 Data File : VN078626.D
 Acq On : 21 Jul 2023 20:15
 Operator : JC\MD
 Sample : PB155423TB
 Misc : 5.0mL/MSVOA_N/WATER
 ALS Vial : 24 Sample Multiplier: 1

Instrument :
 MSVOA_N
 ClientSampleId :
 PB155423TB

Quant Time: Jul 21 23:31:53 2023
 Quant Method : Z:\voasrv\HPCHEM1\MSVOA_N\methods\82N071023W.M
 Quant Title : SW846 8260
 QLast Update : Mon Jul 10 16:13:53 2023
 Response via : Initial Calibration

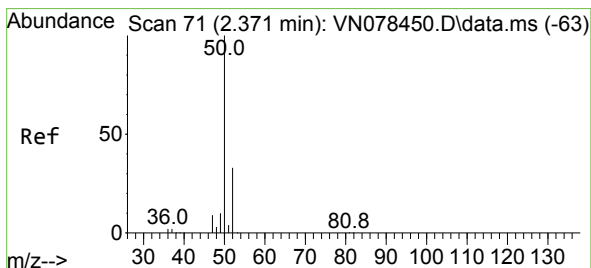
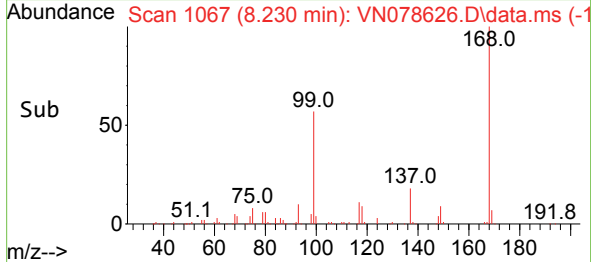
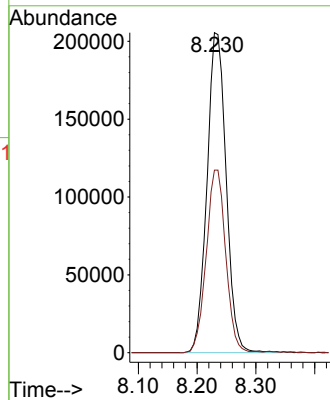
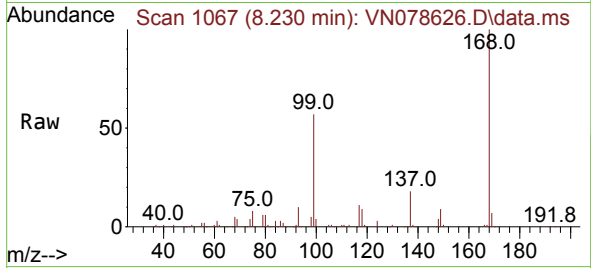




#1
 Pentafluorobenzene
 Concen: 50.000 ug/l
 RT: 8.230 min Scan# 10
 Delta R.T. -0.000 min
 Lab File: VN078626.D
 Acq: 21 Jul 2023 20:15

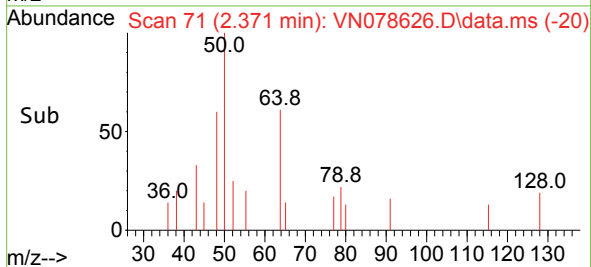
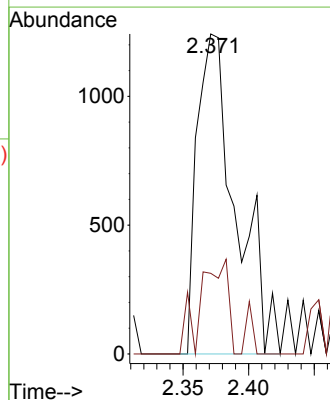
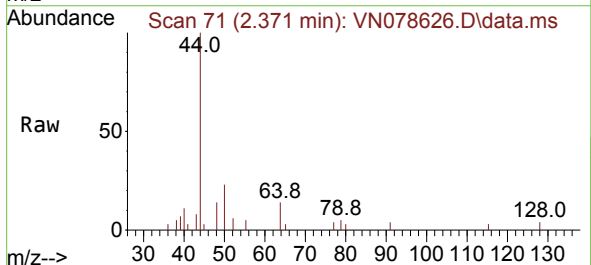
Instrument :
 MSVOA_N
 ClientSampleId :
 PB155423TB

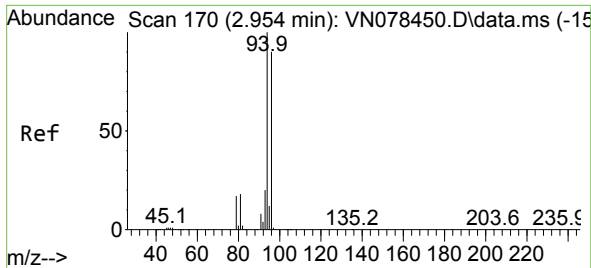
Tgt Ion:168 Resp: 465423
 Ion Ratio Lower Upper
 168 100
 99 57.0 53.0 79.6



#3
 Chloromethane
 Concen: 0.413 ug/l
 RT: 2.371 min Scan# 71
 Delta R.T. 0.000 min
 Lab File: VN078626.D
 Acq: 21 Jul 2023 20:15

Tgt Ion: 50 Resp: 2561
 Ion Ratio Lower Upper
 50 100
 52 25.2 26.5 39.7#

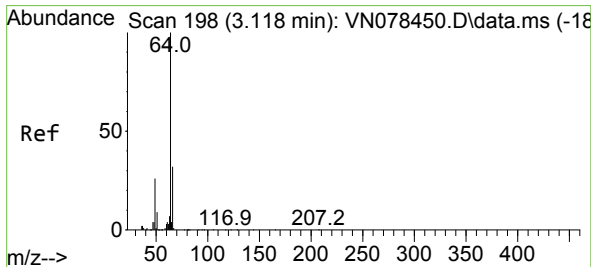
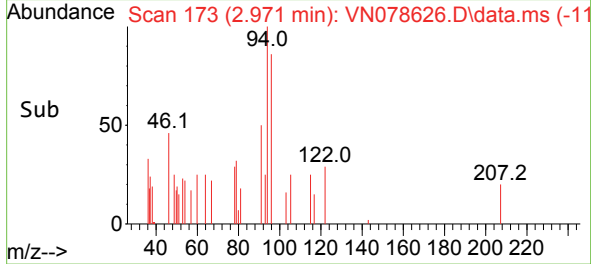
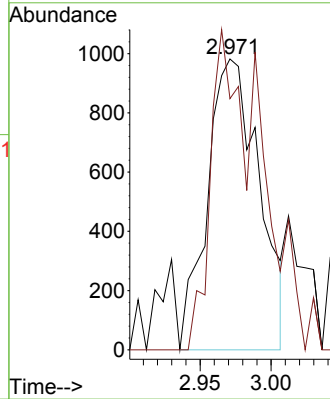
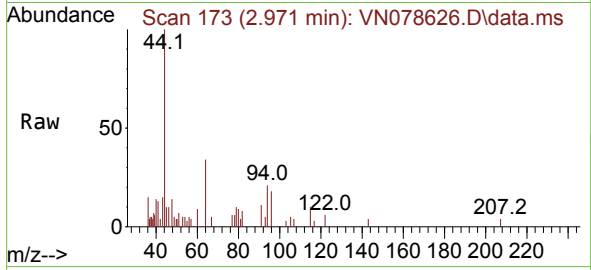




#5
 Bromomethane
 Concen: Below Cal
 RT: 2.971 min Scan# 11
 Delta R.T. 0.017 min
 Lab File: VN078626.D
 Acq: 21 Jul 2023 20:15

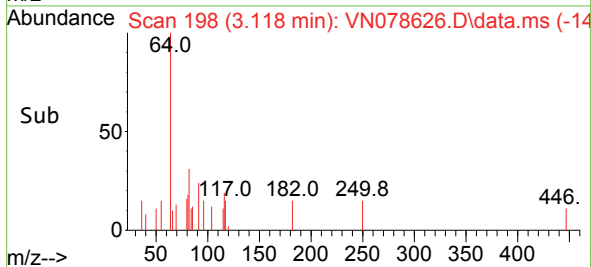
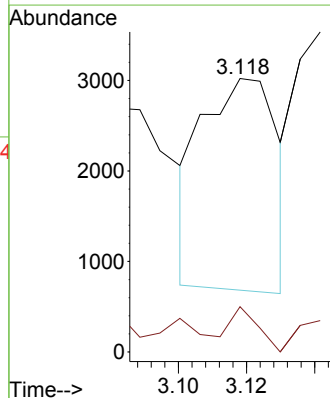
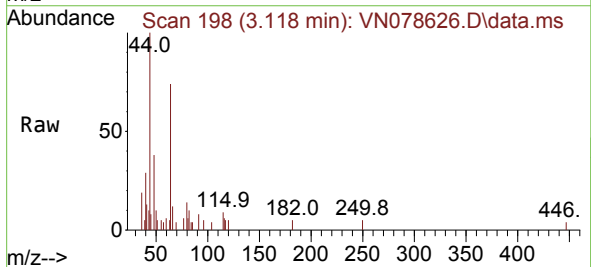
Instrument :
 MSVOA_N
 ClientSampleId :
 PB155423TB

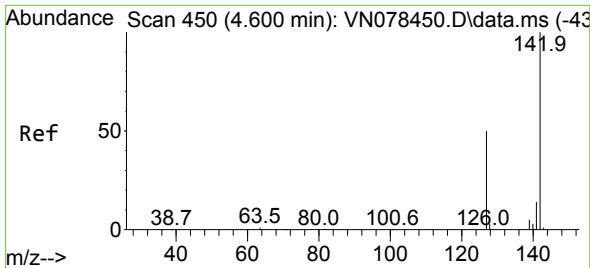
Tgt Ion: 94 Resp: 2487
 Ion Ratio Lower Upper
 94 100
 96 86.4 73.1 109.7



#6
 Chloroethane
 Concen: Below Cal
 RT: 3.118 min Scan# 198
 Delta R.T. 0.000 min
 Lab File: VN078626.D
 Acq: 21 Jul 2023 20:15

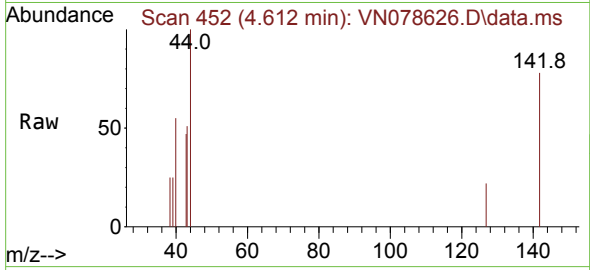
Tgt Ion: 64 Resp: 3571
 Ion Ratio Lower Upper
 64 100
 66 52.0 25.4 38.2



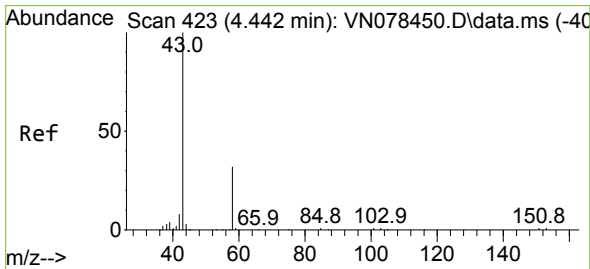
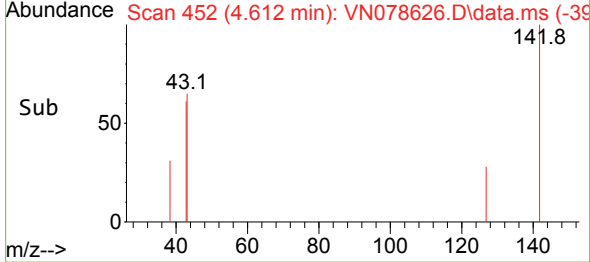
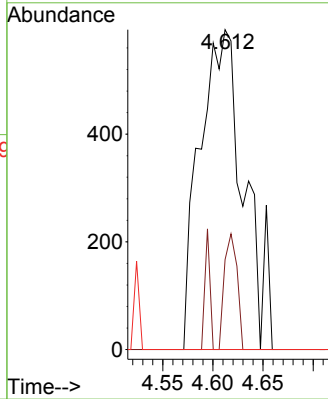


#10
Methyl Iodide
Concen: 0.261 ug/l
RT: 4.612 min Scan# 41
Delta R.T. 0.012 min
Lab File: VN078626.D
Acq: 21 Jul 2023 20:15

Instrument : MSVOA_N
Client Sample Id : PB155423TB

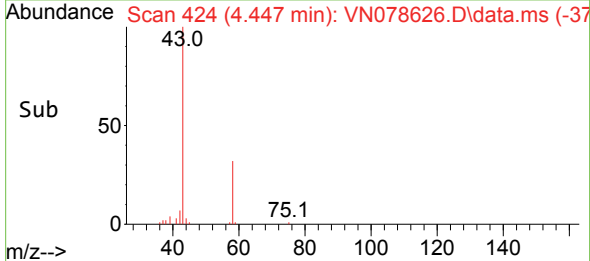
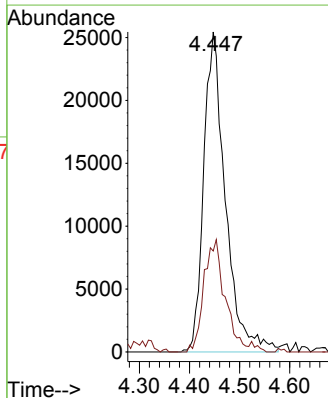
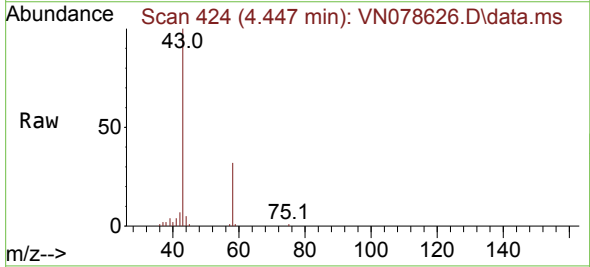


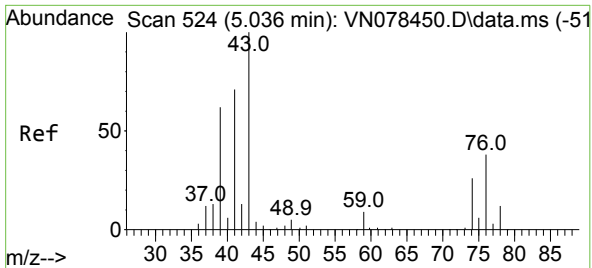
Tgt Ion:142 Resp: 1824
Ion Ratio Lower Upper
142 100
127 28.1 37.6 56.4#
141 0.0 11.4 17.0#



#16
Acetone
Concen: 39.241 ug/l
RT: 4.447 min Scan# 424
Delta R.T. 0.005 min
Lab File: VN078626.D
Acq: 21 Jul 2023 20:15

Tgt Ion: 43 Resp: 76268
Ion Ratio Lower Upper
43 100
58 31.5 28.0 42.0

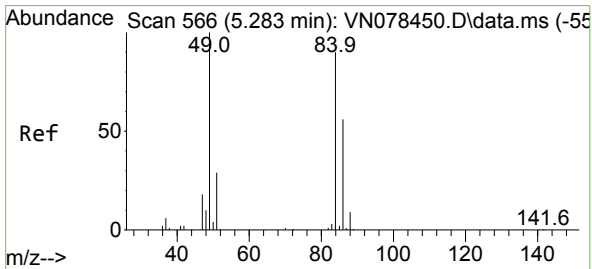
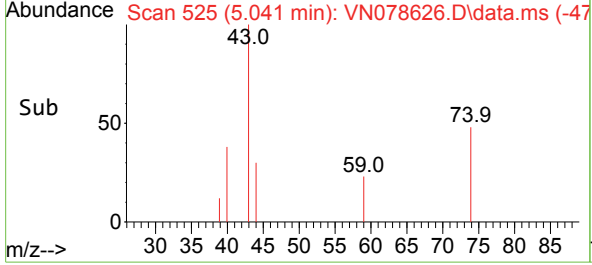
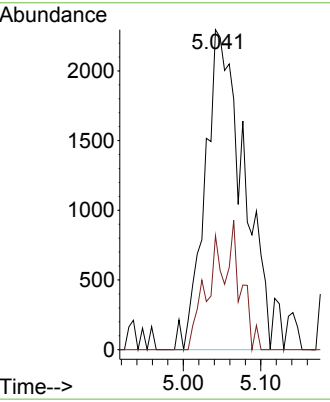
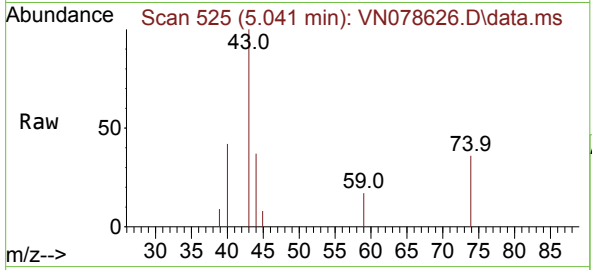




#18
 Methyl Acetate
 Concen: 0.958 ug/l
 RT: 5.041 min Scan# 51
 Delta R.T. 0.005 min
 Lab File: VN078626.D
 Acq: 21 Jul 2023 20:15

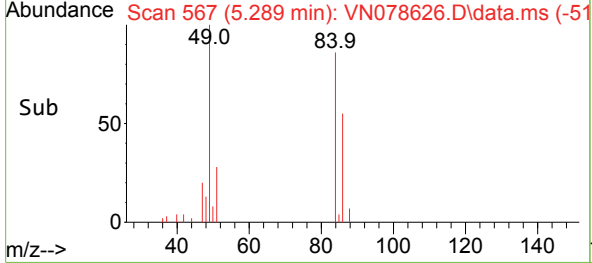
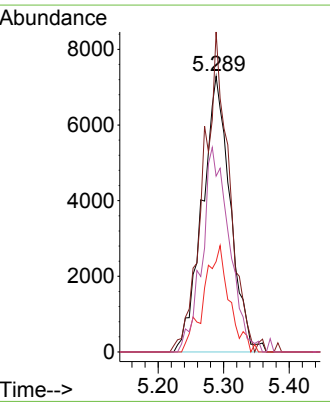
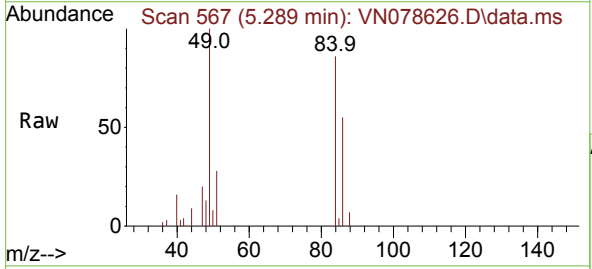
Instrument : MSVOA_N
 ClientSampleId : PB155423TB

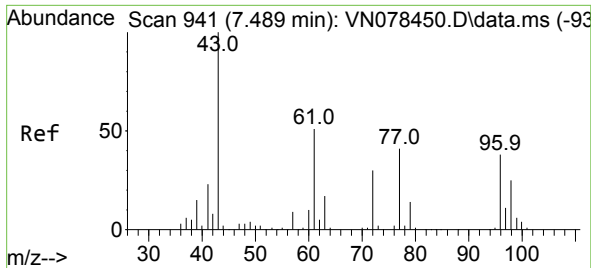
Tgt Ion: 43 Resp: 7883
 Ion Ratio Lower Upper
 43 100
 74 15.9 26.2 39.4#



#20
 Methylene Chloride
 Concen: 2.712 ug/l
 RT: 5.289 min Scan# 567
 Delta R.T. 0.006 min
 Lab File: VN078626.D
 Acq: 21 Jul 2023 20:15

Tgt Ion: 84 Resp: 21568
 Ion Ratio Lower Upper
 84 100
 49 116.1 79.7 119.5
 51 32.8 25.2 37.8
 86 63.8 53.3 79.9

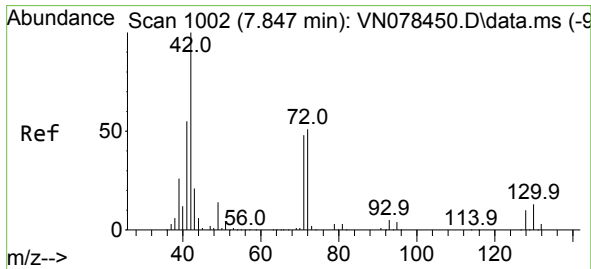
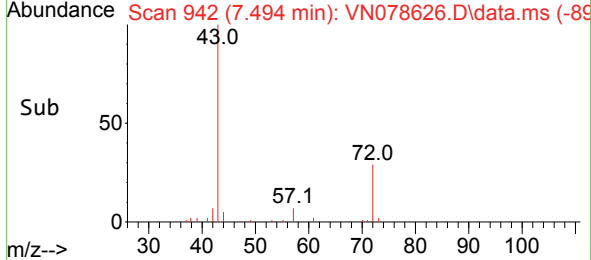
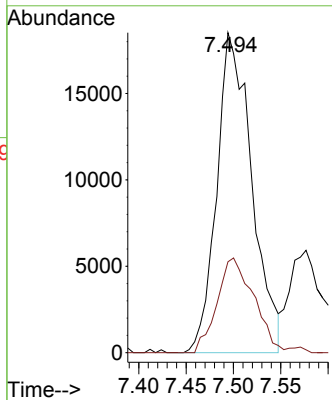
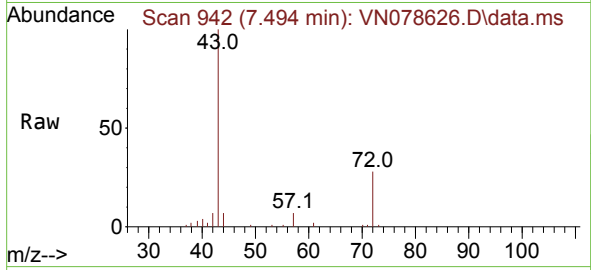




#25
 2-Butanone
 Concen: 15.565 ug/l
 RT: 7.494 min Scan# 941
 Delta R.T. 0.005 min
 Lab File: VN078626.D
 Acq: 21 Jul 2023 20:15

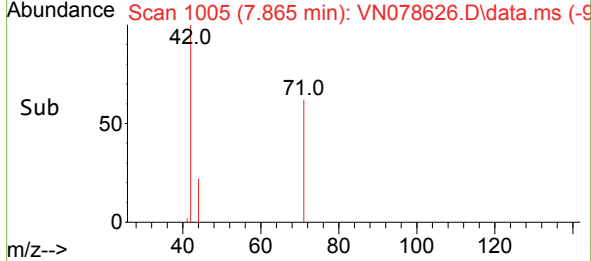
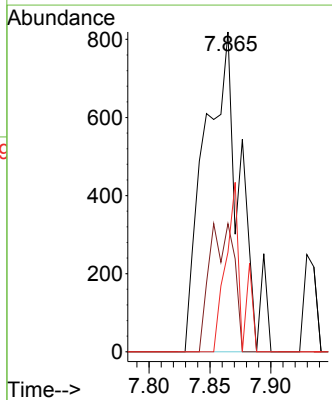
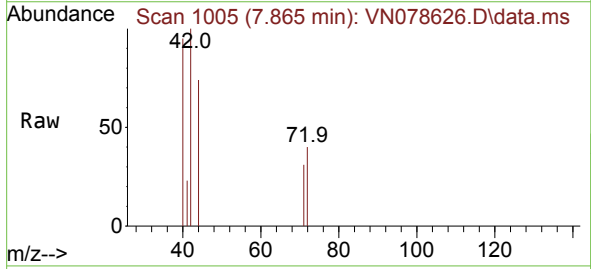
Instrument : MSVOA_N
 ClientSampleId : PB155423TB

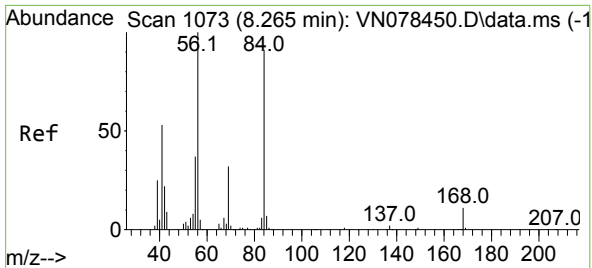
Tgt Ion: 43 Resp: 47622
 Ion Ratio Lower Upper
 43 100
 72 28.4 30.2 45.2#



#29
 Tetrahydrofuran
 Concen: 0.832 ug/l
 RT: 7.865 min Scan# 1005
 Delta R.T. 0.018 min
 Lab File: VN078626.D
 Acq: 21 Jul 2023 20:15

Tgt Ion: 42 Resp: 1670
 Ion Ratio Lower Upper
 42 100
 72 27.4 49.8 74.6#
 71 22.9 47.4 71.2#

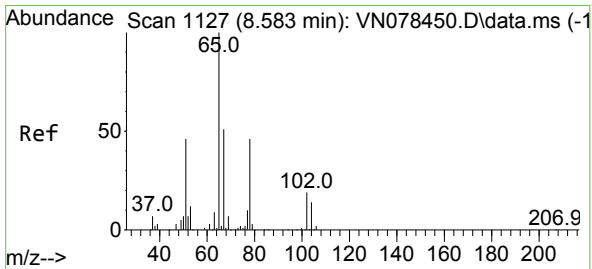
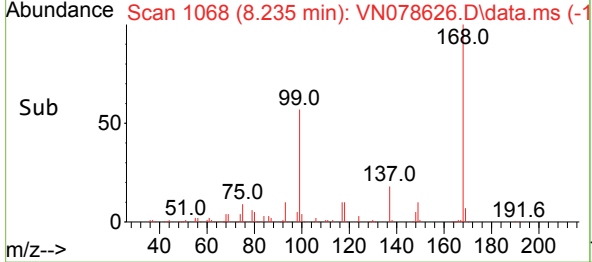
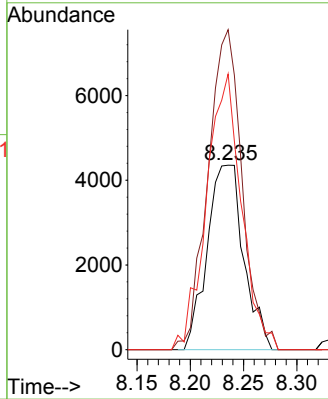
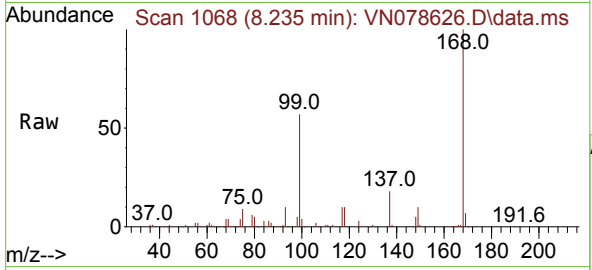




#31
 Cyclohexane
 Concen: 1.232 ug/l
 RT: 8.235 min Scan# 1068
 Delta R.T. -0.030 min
 Lab File: VN078626.D
 Acq: 21 Jul 2023 20:15

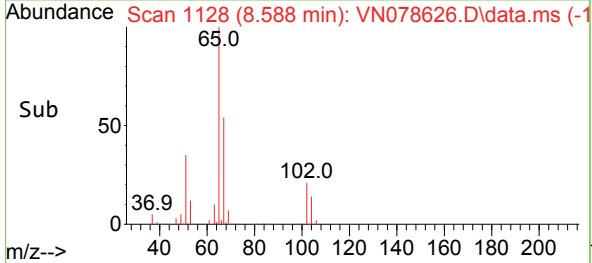
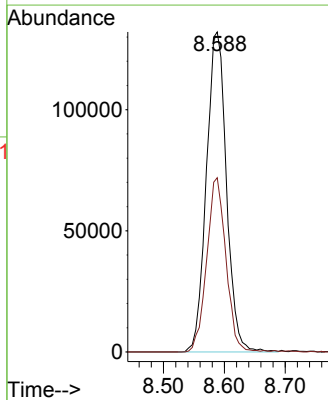
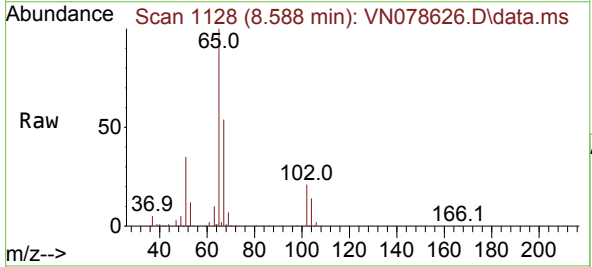
Instrument : MSVOA_N
 ClientSampleId : PB155423TB

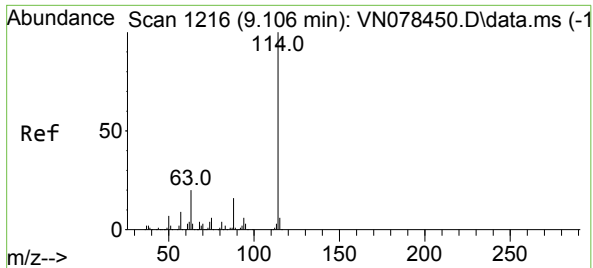
Tgt Ion	Resp	Lower	Upper
56	10392		
69	173.5	26.8	40.2#
84	149.4	81.8	122.6#



#33
 1,2-Dichloroethane-d4
 Concen: 48.400 ug/l
 RT: 8.588 min Scan# 1128
 Delta R.T. 0.005 min
 Lab File: VN078626.D
 Acq: 21 Jul 2023 20:15

Tgt Ion	Resp	Lower	Upper
65	301993		
67	52.2	0.0	106.6

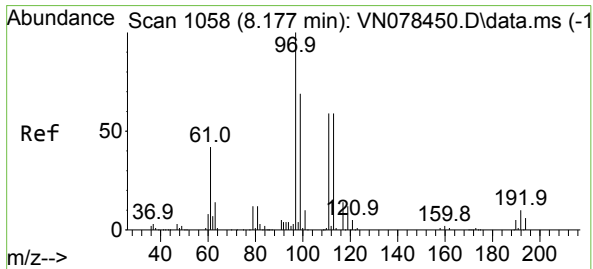
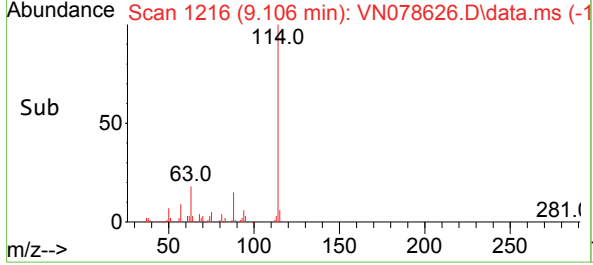
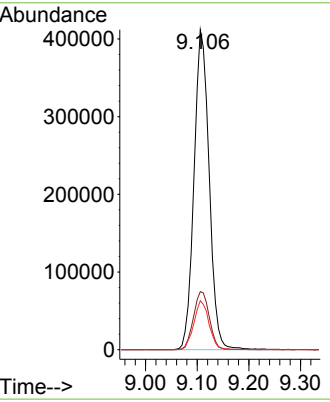
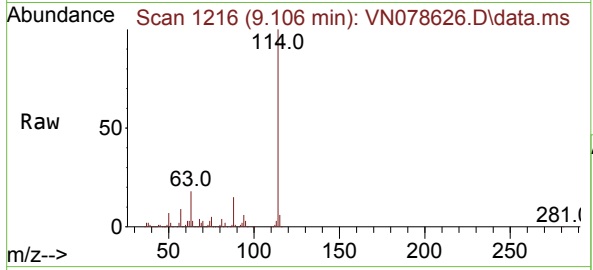




#34
 1,4-Difluorobenzene
 Concen: 50.000 ug/l
 RT: 9.106 min Scan# 11
 Delta R.T. -0.000 min
 Lab File: VN078626.D
 Acq: 21 Jul 2023 20:15

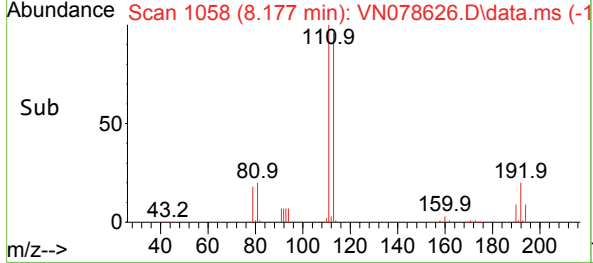
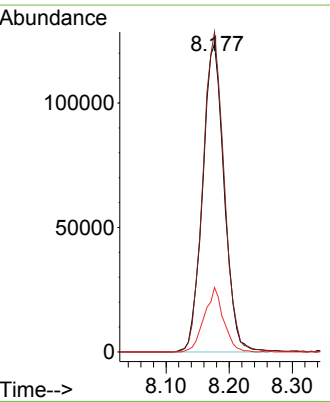
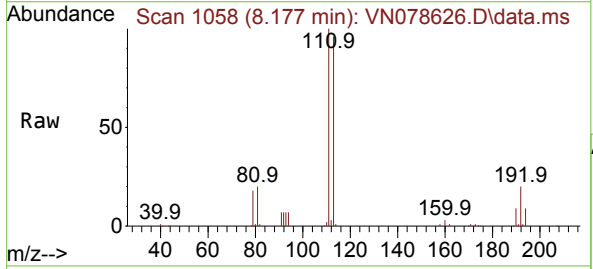
Instrument : MSVOA_N
 ClientSampleId : PB155423TB

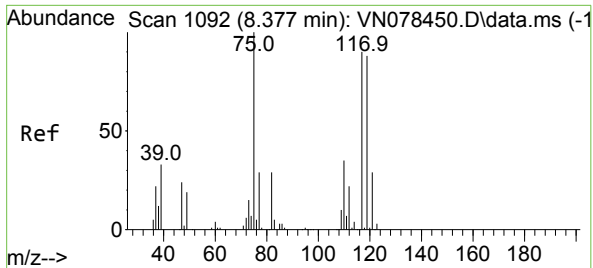
Tgt Ion	Resp	Lower	Upper
114	100		
63	18.1	0.0	36.4
88	15.3	0.0	30.6



#35
 Dibromofluoromethane
 Concen: 51.631 ug/l
 RT: 8.177 min Scan# 1058
 Delta R.T. -0.000 min
 Lab File: VN078626.D
 Acq: 21 Jul 2023 20:15

Tgt Ion	Resp	Lower	Upper
113	100		
111	102.7	82.6	123.8
192	18.6	12.7	19.1

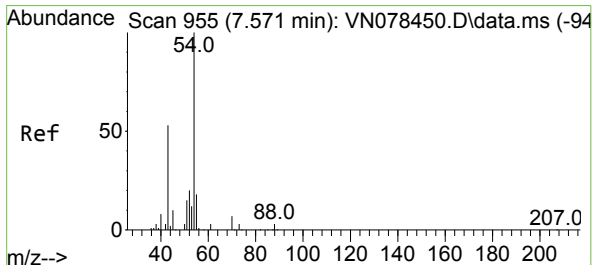
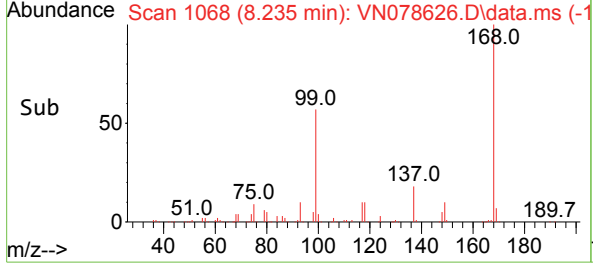
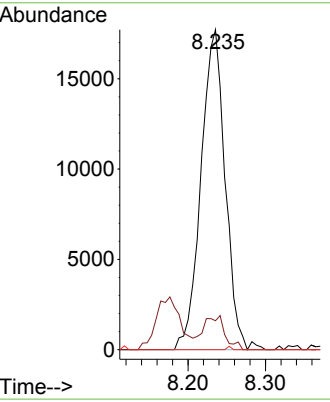
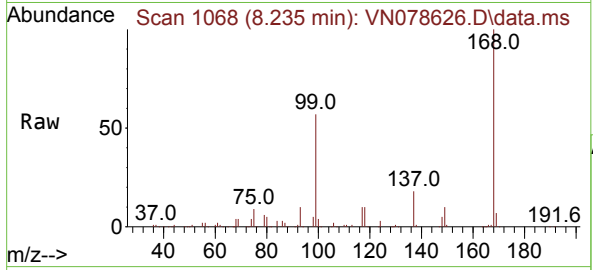




#36
 1,1-Dichloropropene
 Concen: 4.683 ug/l
 RT: 8.235 min Scan# 1092
 Delta R.T. -0.142 min
 Lab File: VN078626.D
 Acq: 21 Jul 2023 20:15

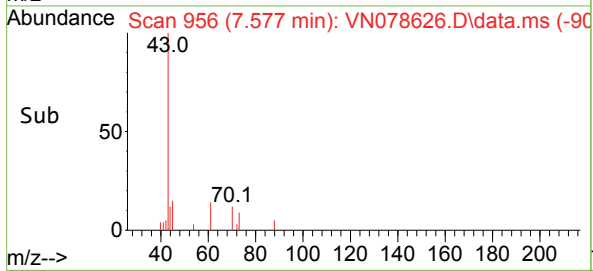
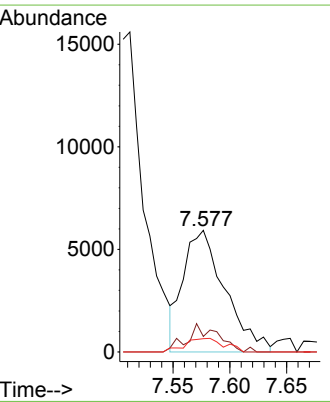
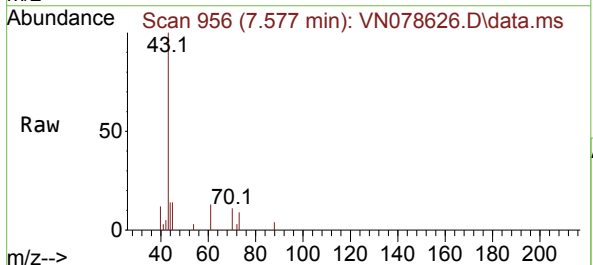
Instrument : MSVOA_N
 ClientSampleId : PB155423TB

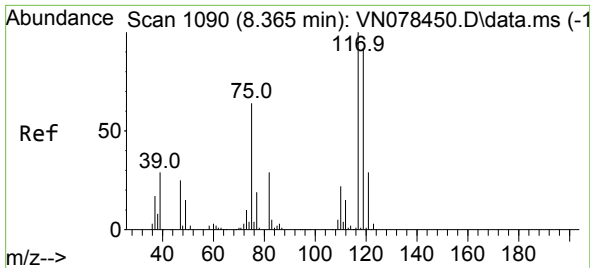
Tgt Ion	Resp	Lower	Upper
75	38449		
75	100		
110	9.6	19.1	57.3#
77	0.2	25.0	37.4#



#37
 Ethyl Acetate
 Concen: 2.214 ug/l
 RT: 7.577 min Scan# 956
 Delta R.T. 0.006 min
 Lab File: VN078626.D
 Acq: 21 Jul 2023 20:15

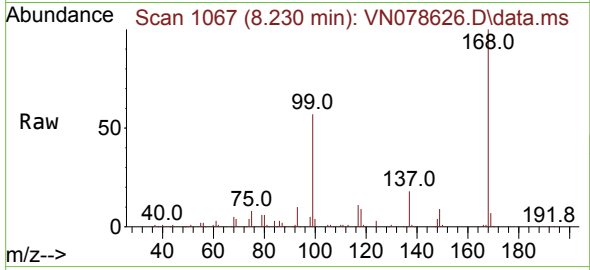
Tgt Ion	Resp	Lower	Upper
43	15150		
43	100		
61	16.6	13.2	19.8
70	10.4	11.3	16.9#



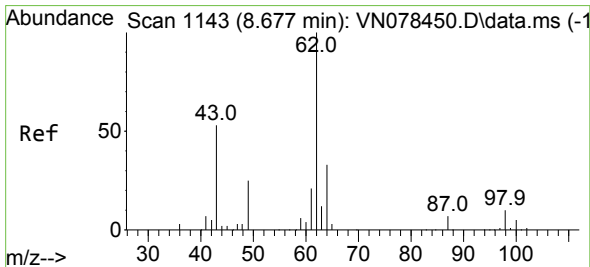
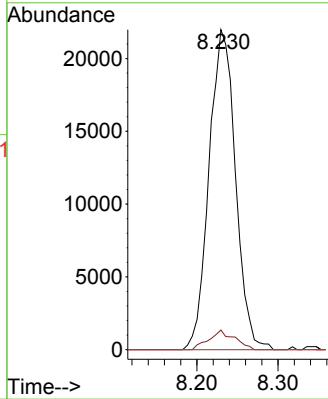
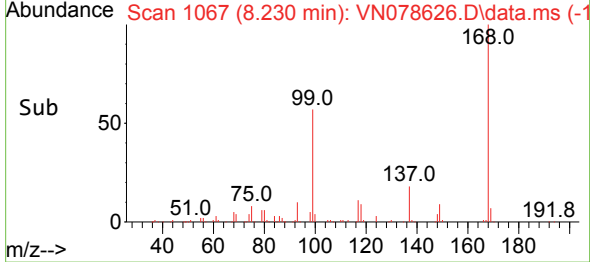


#38
 Carbon Tetrachloride
 Concen: 5.576 ug/l
 RT: 8.230 min Scan# 1067
 Delta R.T. -0.135 min
 Lab File: VN078626.D
 Acq: 21 Jul 2023 20:15

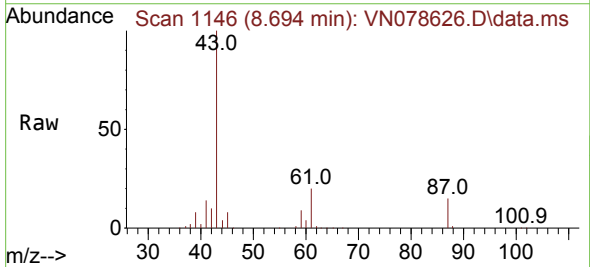
Instrument : MSVOA_N
 ClientSampleId : PB155423TB



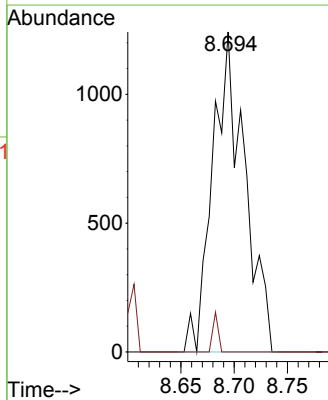
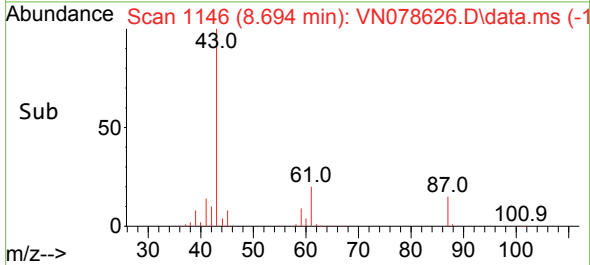
Tgt Ion: 117 Resp: 49750
 Ion Ratio Lower Upper
 117 100
 119 6.2 77.3 115.9#
 121 0.0 23.3 34.9#

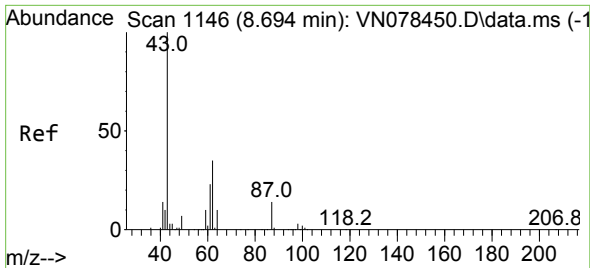


#42
 1,2-Dichloroethane
 Concen: 0.313 ug/l
 RT: 8.694 min Scan# 1146
 Delta R.T. 0.017 min
 Lab File: VN078626.D
 Acq: 21 Jul 2023 20:15



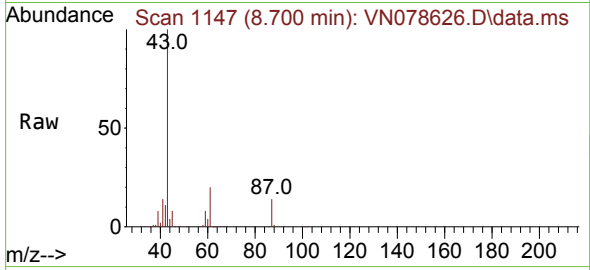
Tgt Ion: 62 Resp: 2589
 Ion Ratio Lower Upper
 62 100
 98 2.1 0.0 19.8





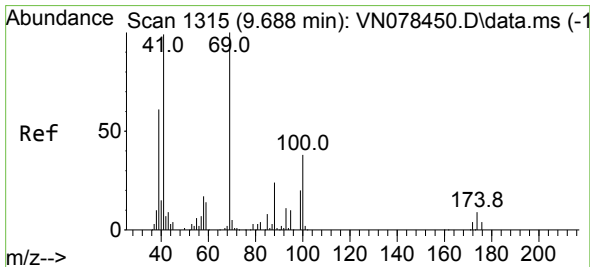
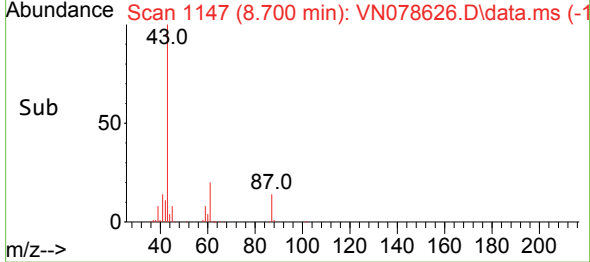
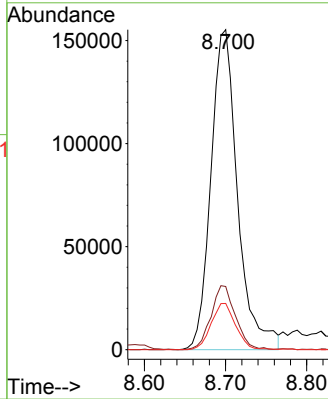
#43
 Isopropyl Acetate
 Concen: 31.556 ug/l
 RT: 8.700 min Scan# 1146
 Delta R.T. 0.006 min
 Lab File: VN078626.D
 Acq: 21 Jul 2023 20:15

Instrument : MSVOA_N
 ClientSampleId : PB155423TB

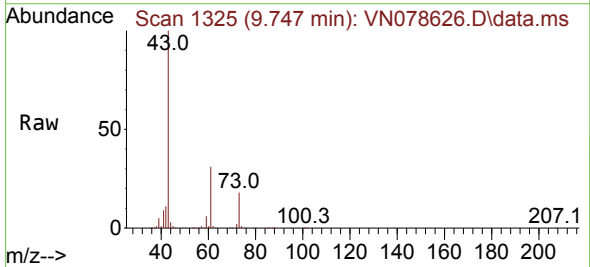


Tgt Ion: 43 Resp: 355540

Ion	Ratio	Lower	Upper
43	100		
61	18.3	24.7	37.1#
87	13.2	14.6	21.8#

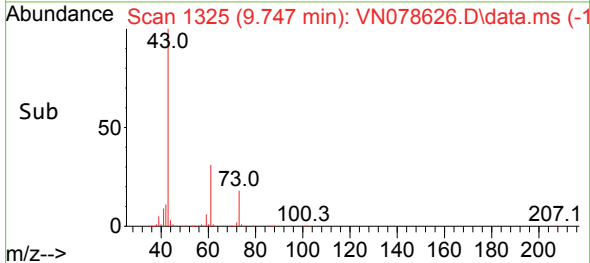
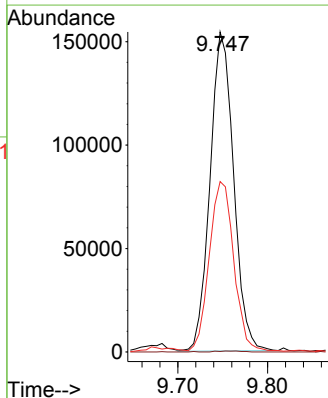


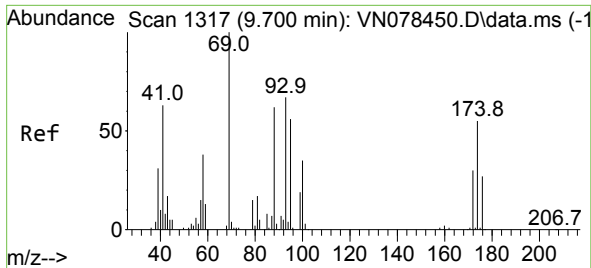
#48
 Methyl methacrylate
 Concen: 53.839 ug/l
 RT: 9.747 min Scan# 1325
 Delta R.T. 0.059 min
 Lab File: VN078626.D
 Acq: 21 Jul 2023 20:15



Tgt Ion: 41 Resp: 281037

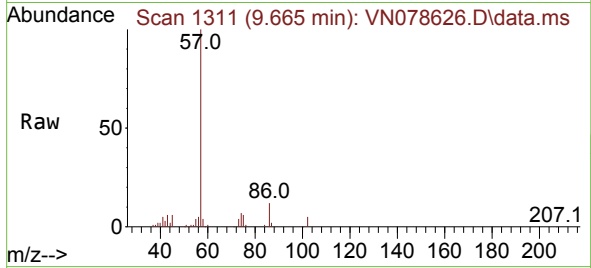
Ion	Ratio	Lower	Upper
41	100		
69	0.3	90.4	135.6#
39	55.2	54.6	81.8



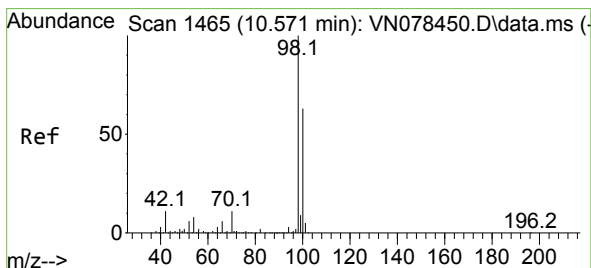
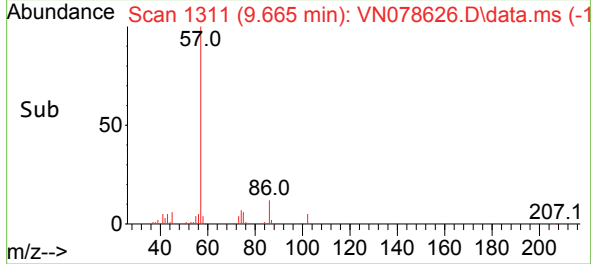
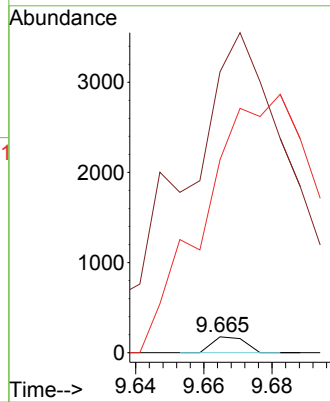


#49
 1,4-Dioxane
 Concen: 1.028 ug/l
 RT: 9.665 min Scan# 111
 Delta R.T. -0.035 min
 Lab File: VN078626.D
 Acq: 21 Jul 2023 20:15

Instrument : MSVOA_N
 Client Sample Id : PB155423TB

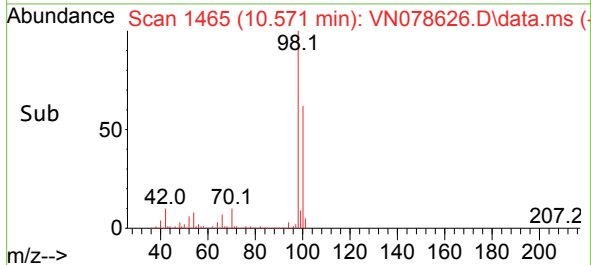
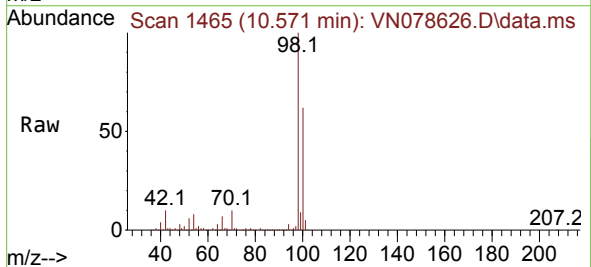
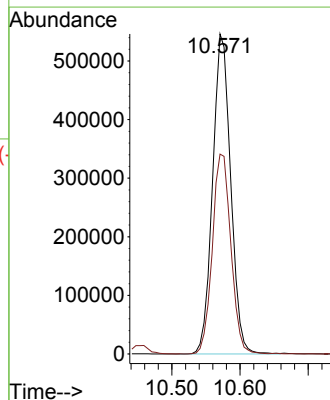


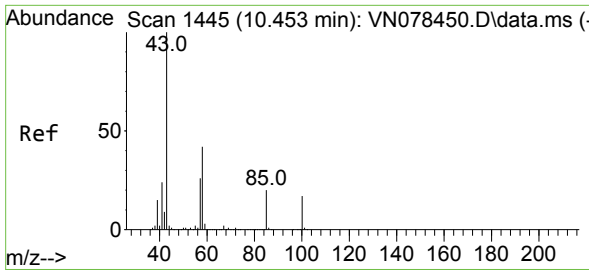
Tgt Ion: 88 Resp: 117
 Ion Ratio Lower Upper
 88 100
 43 0.0 17.0 25.6#
 58 5784.6 47.0 70.4#



#50
 Toluene-d8
 Concen: 46.890 ug/l
 RT: 10.571 min Scan# 1465
 Delta R.T. -0.000 min
 Lab File: VN078626.D
 Acq: 21 Jul 2023 20:15

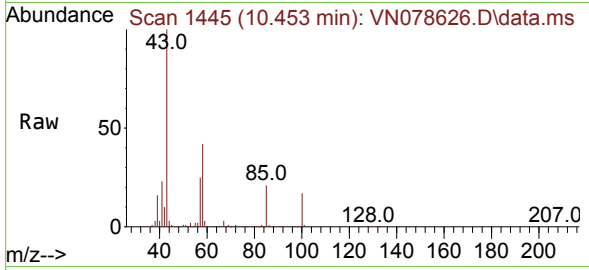
Tgt Ion: 98 Resp: 1007112
 Ion Ratio Lower Upper
 98 100
 100 64.1 52.0 78.0



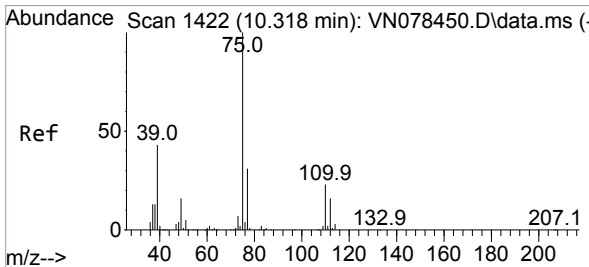
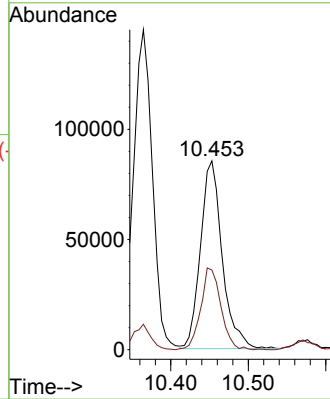
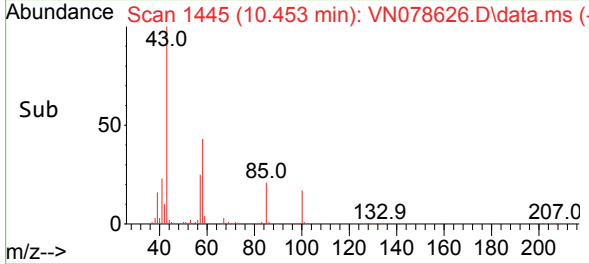


#51
 4-Methyl-2-Pentanone
 Concen: 24.791 ug/l
 RT: 10.453 min Scan# 1445
 Delta R.T. -0.000 min
 Lab File: VN078626.D
 Acq: 21 Jul 2023 20:15

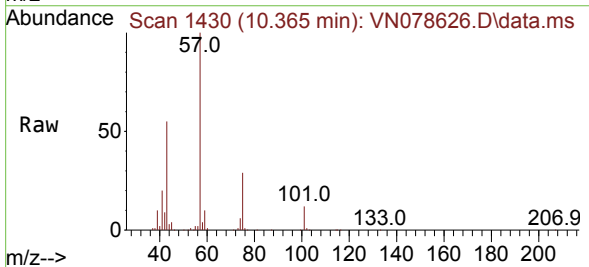
Instrument : MSVOA_N
 ClientSampleId : PB155423TB



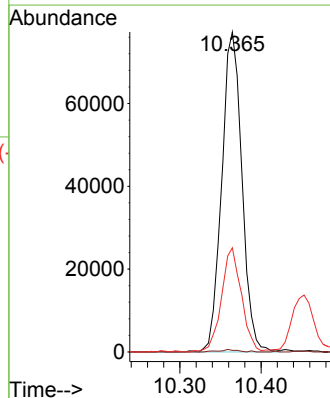
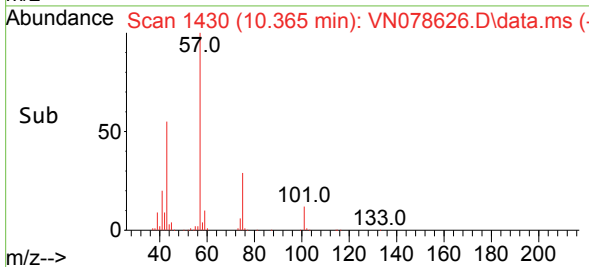
Tgt Ion: 43 Resp: 166144
 Ion Ratio Lower Upper
 43 100
 58 40.2 36.6 54.8

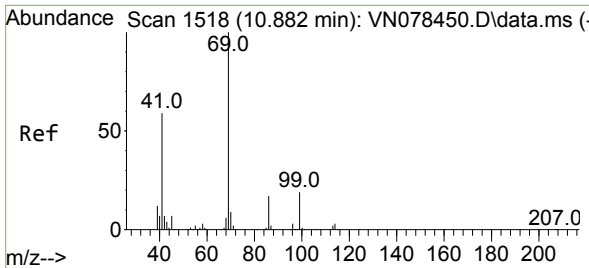


#54
 cis-1,3-Dichloropropene
 Concen: 14.094 ug/l
 RT: 10.365 min Scan# 1430
 Delta R.T. 0.047 min
 Lab File: VN078626.D
 Acq: 21 Jul 2023 20:15



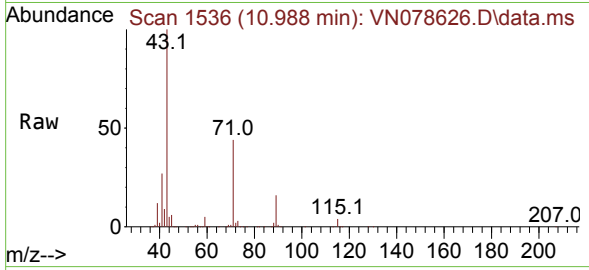
Tgt Ion: 75 Resp: 133762
 Ion Ratio Lower Upper
 75 100
 77 0.5 26.1 39.1#
 39 32.3 31.6 47.4



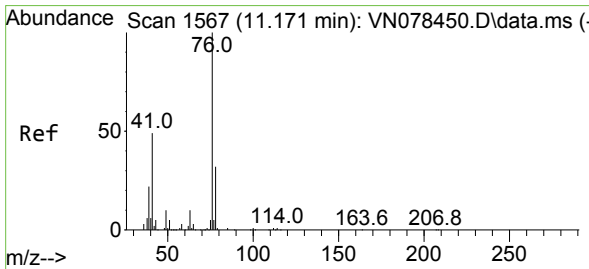
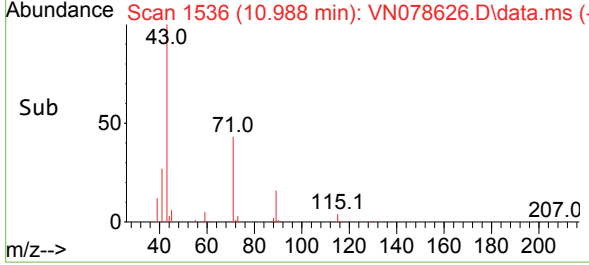
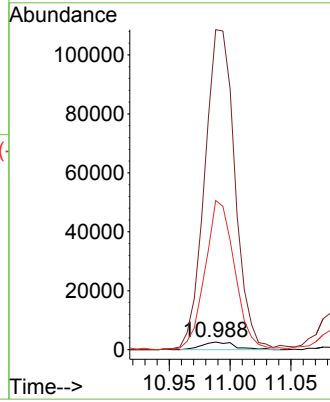


#56
 Ethyl methacrylate
 Concen: 0.590 ug/l
 RT: 10.988 min Scan# 1536
 Delta R.T. 0.106 min
 Lab File: VN078626.D
 Acq: 21 Jul 2023 20:15

Instrument : MSVOA_N
 ClientSampleId : PB155423TB

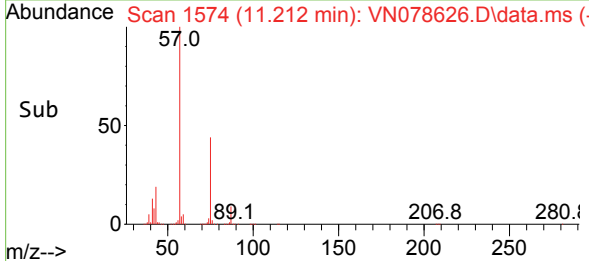
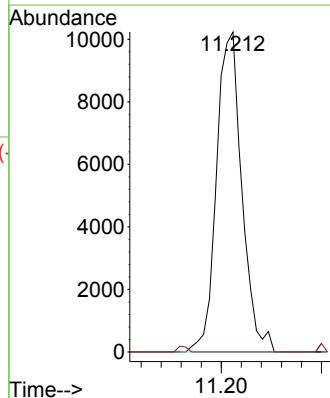
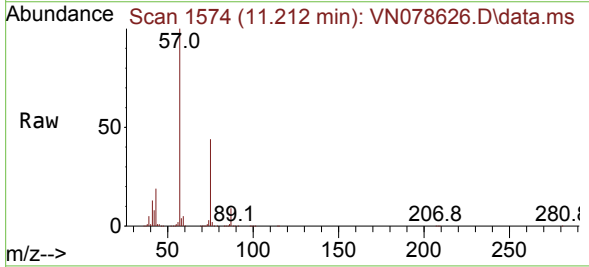


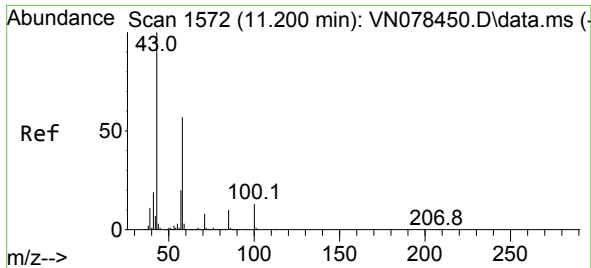
Tgt Ion: 69 Resp: 4900
 Ion Ratio Lower Upper
 69 100
 41 3858.6 39.6 59.4#
 39 1752.5 28.6 43.0#



#57
 1,3-Dichloropropane
 Concen: 1.775 ug/l
 RT: 11.212 min Scan# 1574
 Delta R.T. 0.041 min
 Lab File: VN078626.D
 Acq: 21 Jul 2023 20:15

Tgt Ion: 76 Resp: 17929
 Ion Ratio Lower Upper
 76 100
 78 0.0 26.1 39.1#

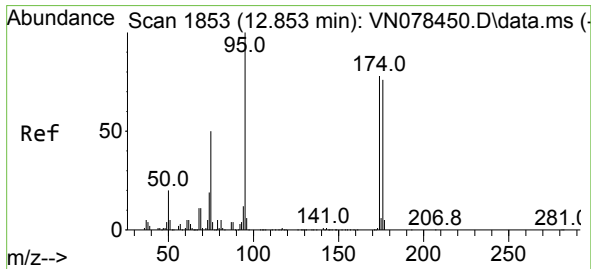
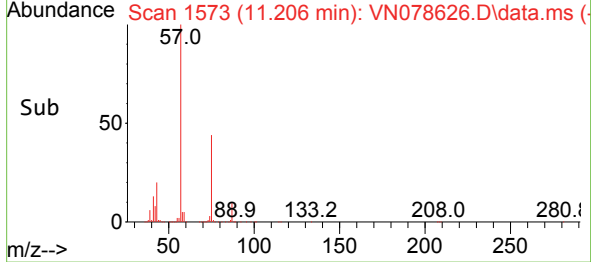
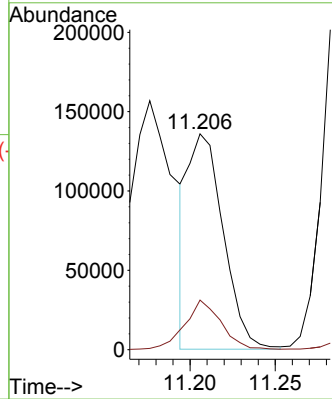
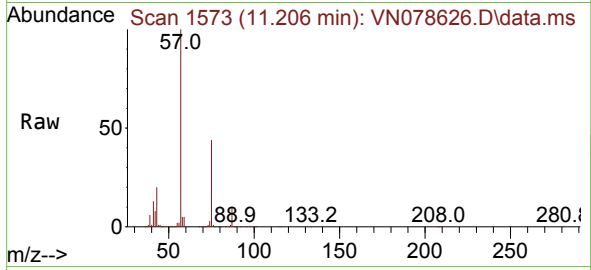




#59
 2-Hexanone
 Concen: 40.861 ug/l
 RT: 11.206 min Scan# 1111
 Delta R.T. 0.006 min
 Lab File: VN078626.D
 Acq: 21 Jul 2023 20:15

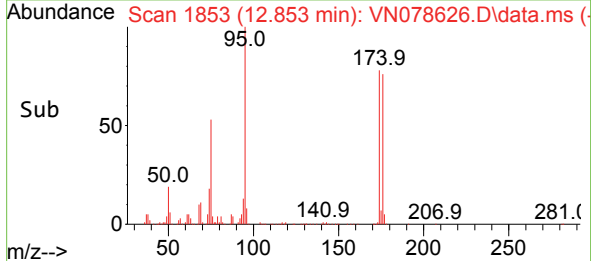
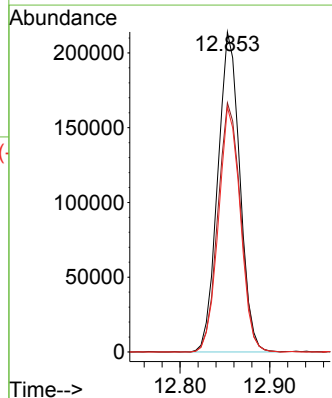
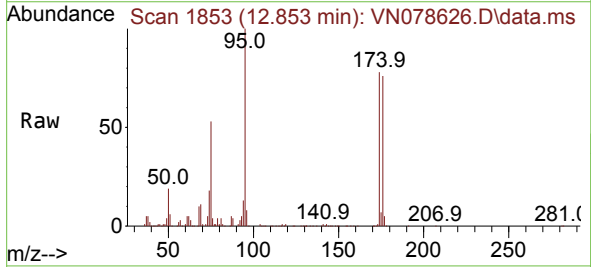
Instrument : MSVOA_N
 ClientSampleId : PB155423TB

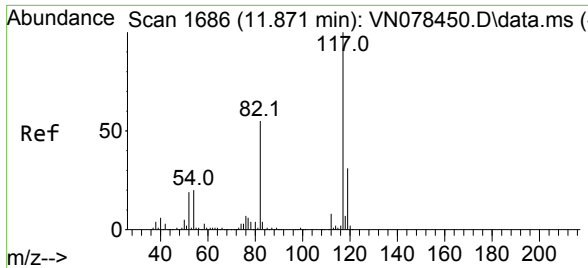
Tgt Ion: 43 Resp: 194623
 Ion Ratio Lower Upper
 43 100
 58 24.1 31.7 95.1#



#62
 4-Bromofluorobenzene
 Concen: 55.226 ug/l
 RT: 12.853 min Scan# 1853
 Delta R.T. -0.000 min
 Lab File: VN078626.D
 Acq: 21 Jul 2023 20:15

Tgt Ion: 95 Resp: 365364
 Ion Ratio Lower Upper
 95 100
 174 80.4 0.0 143.8
 176 75.9 0.0 135.8



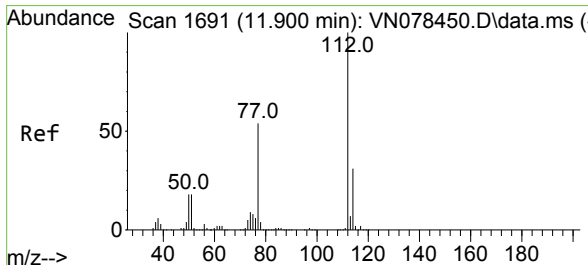
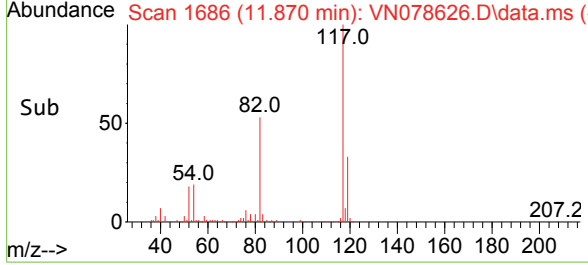
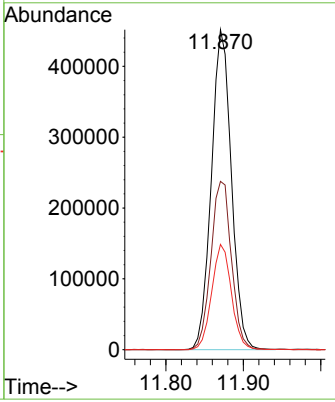
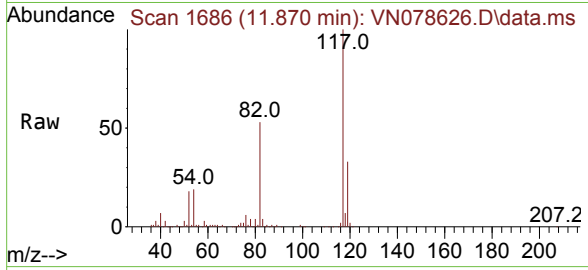


#63
 Chlorobenzene-d5
 Concen: 50.000 ug/l
 RT: 11.870 min Scan# 1686
 Delta R.T. -0.001 min
 Lab File: VN078626.D
 Acq: 21 Jul 2023 20:15

Instrument : MSVOA_N
 ClientSampleId : PB155423TB

Tgt Ion:117 Resp: 811238

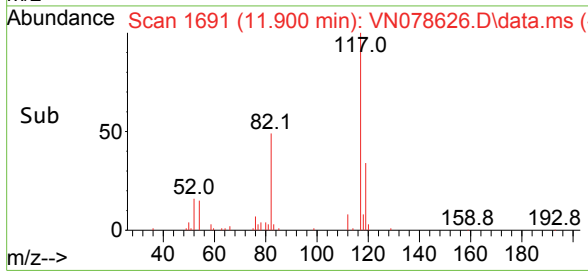
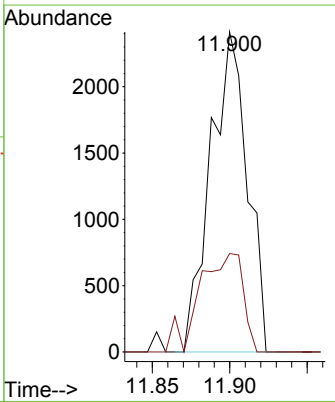
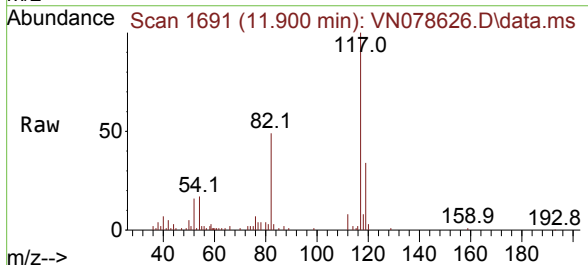
Ion	Ratio	Lower	Upper
117	100		
82	52.6	44.0	66.0
119	32.9	25.6	38.4

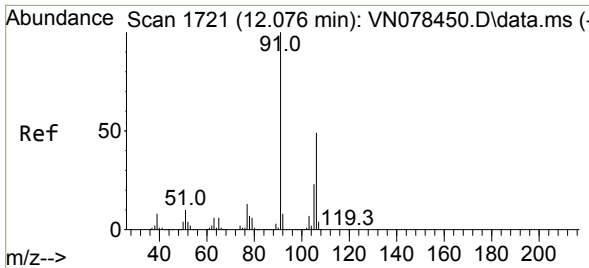


#65
 Chlorobenzene
 Concen: 0.220 ug/l
 RT: 11.900 min Scan# 1691
 Delta R.T. -0.000 min
 Lab File: VN078626.D
 Acq: 21 Jul 2023 20:15

Tgt Ion:112 Resp: 3986

Ion	Ratio	Lower	Upper
112	100		
114	30.8	25.0	37.4

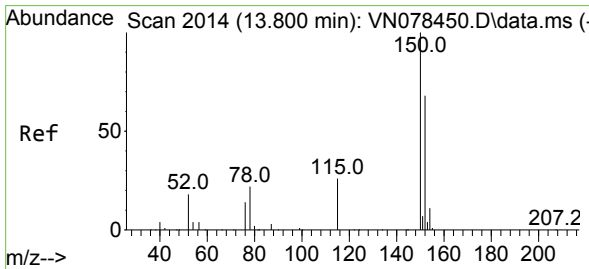
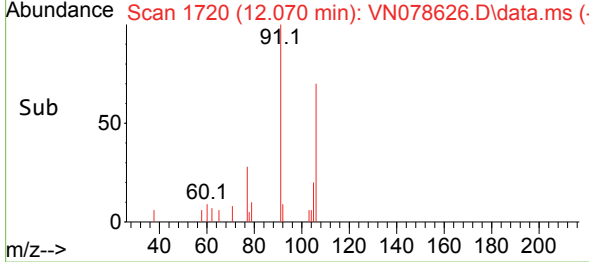
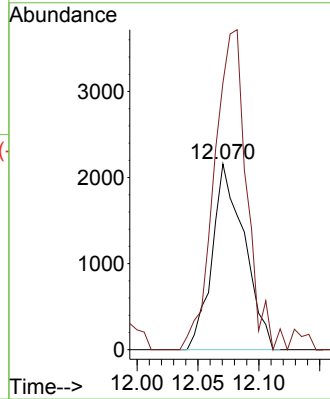
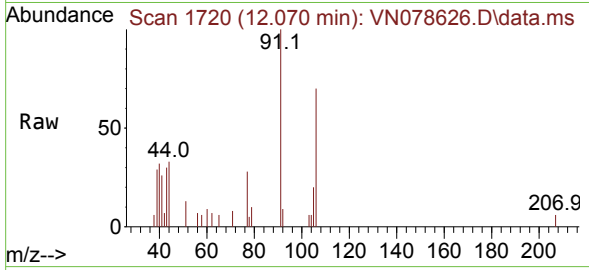




#68
 m/p-Xylenes
 Concen: 0.351 ug/l
 RT: 12.070 min Scan# 11
 Delta R.T. -0.006 min
 Lab File: VN078626.D
 Acq: 21 Jul 2023 20:15

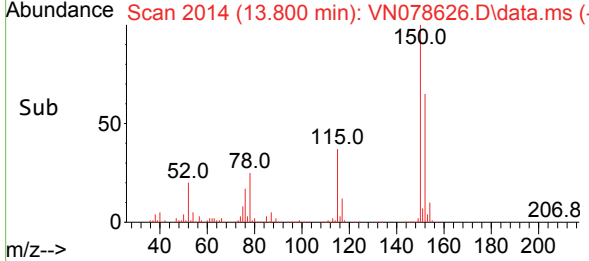
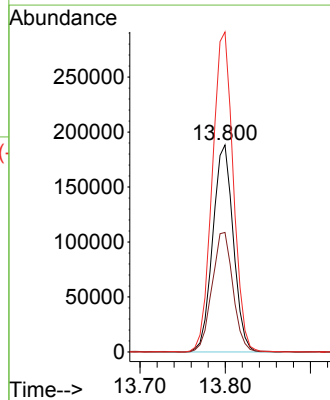
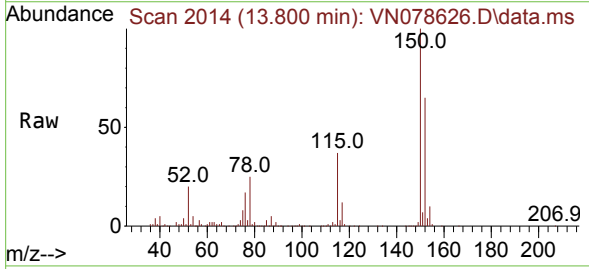
Instrument : MSVOA_N
 ClientSampleId : PB155423TB

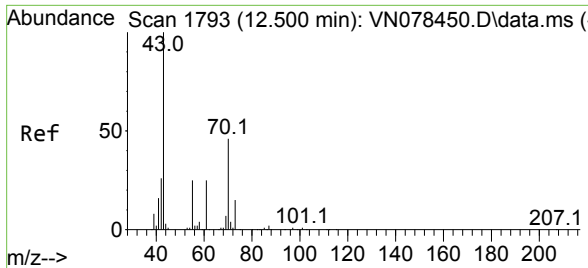
Tgt Ion:106 Resp: 3974
 Ion Ratio Lower Upper
 106 100
 91 173.8 159.6 239.4



#72
 1,4-Dichlorobenzene-d4
 Concen: 50.000 ug/l
 RT: 13.800 min Scan# 2014
 Delta R.T. -0.000 min
 Lab File: VN078626.D
 Acq: 21 Jul 2023 20:15

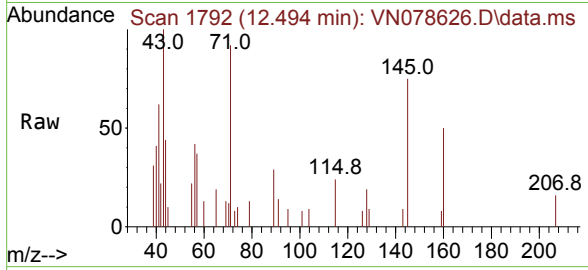
Tgt Ion:152 Resp: 316098
 Ion Ratio Lower Upper
 152 100
 115 58.7 32.3 96.8
 150 157.2 0.0 355.8



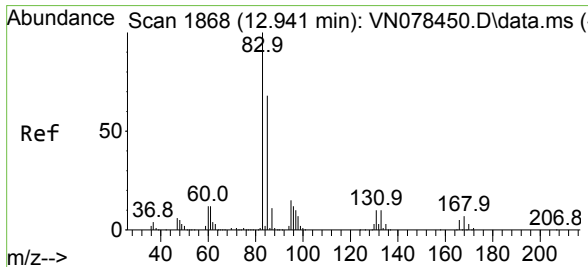
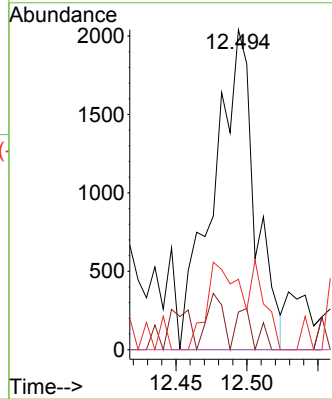
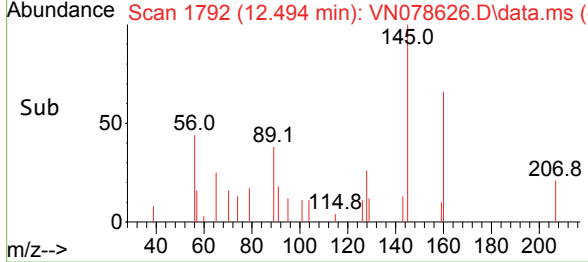


#74
 N-amy1 acetate
 Concen: 0.406 ug/l
 RT: 12.494 min Scan# 11
 Delta R.T. -0.006 min
 Lab File: VN078626.D
 Acq: 21 Jul 2023 20:15

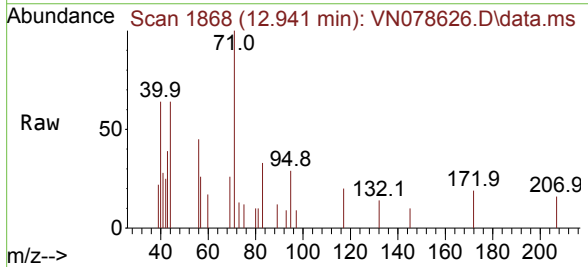
Instrument : MSVOA_N
ClientSampleId : PB155423TB



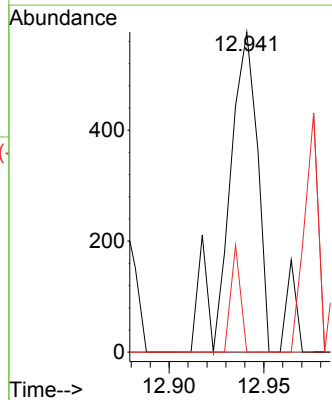
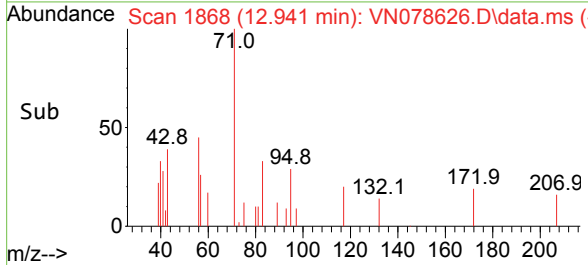
Tgt Ion	Resp	Lower	Upper
43	100		
70	5.8	43.4	65.2#
55	0.0	21.4	32.0#
61	0.0	22.8	34.2#

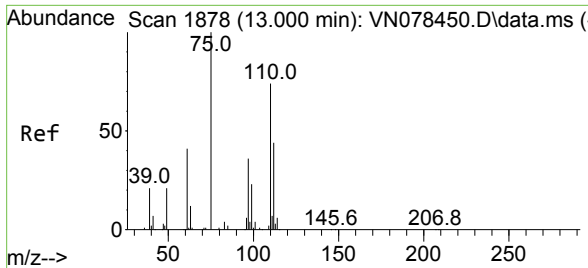


#75
 1,1,2,2-Tetrachloroethane
 Concen: Below Cal
 RT: 12.941 min Scan# 1868
 Delta R.T. -0.000 min
 Lab File: VN078626.D
 Acq: 21 Jul 2023 20:15



Tgt Ion	Resp	Lower	Upper
83	100		
131	0.0	5.0	15.0#
85	10.9	31.9	95.7#

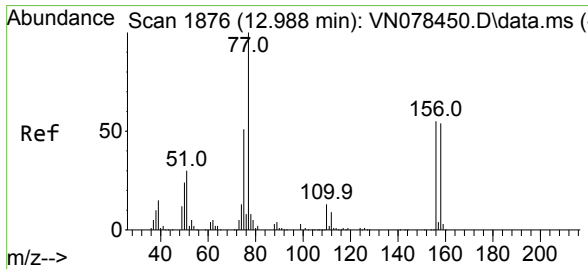
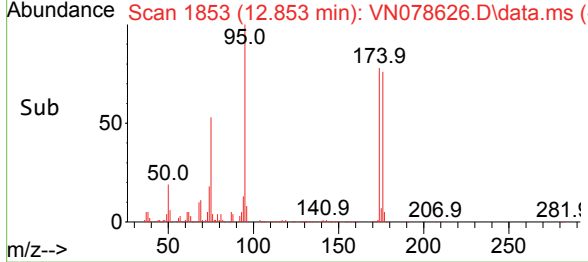
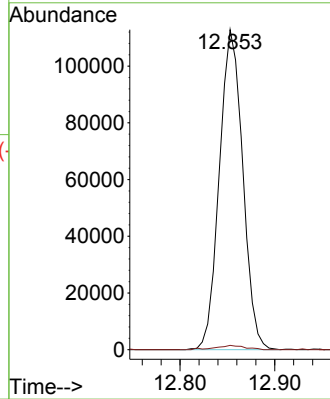
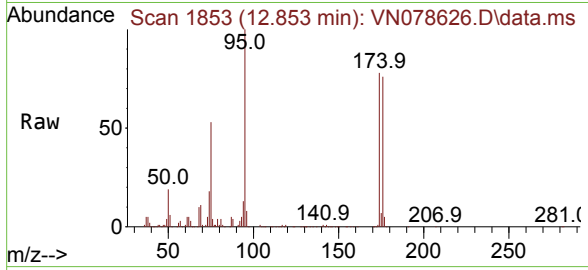




#76
 1,2,3-Trichloropropane
 Concen: 25.381 ug/l
 RT: 12.853 min Scan# 1853
 Delta R.T. -0.147 min
 Lab File: VN078626.D
 Acq: 21 Jul 2023 20:15

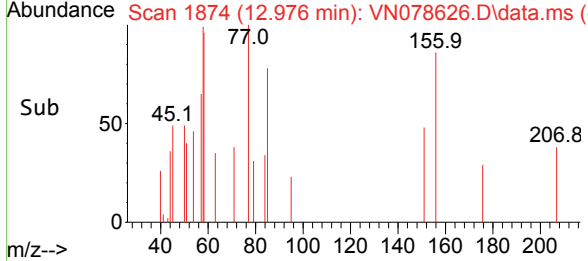
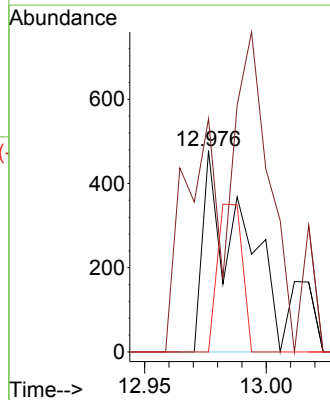
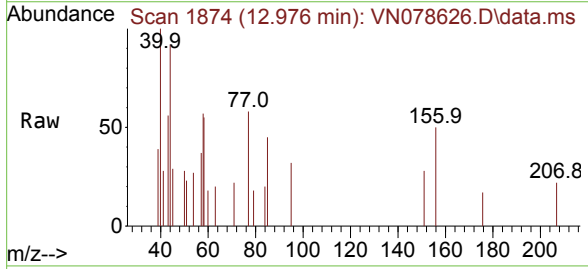
Instrument : MSVOA_N
 ClientSampleId : PB155423TB

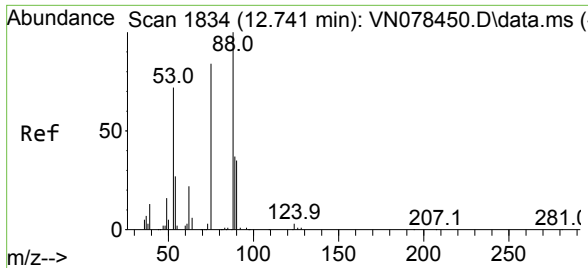
Tgt Ion: 75 Resp: 193922
 Ion Ratio Lower Upper
 75 100
 77 1.7 84.5 253.5#



#77
 Bromobenzene
 Concen: Below Cal
 RT: 12.976 min Scan# 1874
 Delta R.T. -0.012 min
 Lab File: VN078626.D
 Acq: 21 Jul 2023 20:15

Tgt Ion:156 Resp: 532
 Ion Ratio Lower Upper
 156 100
 77 259.8 107.7 323.3
 158 46.4 48.4 145.3#



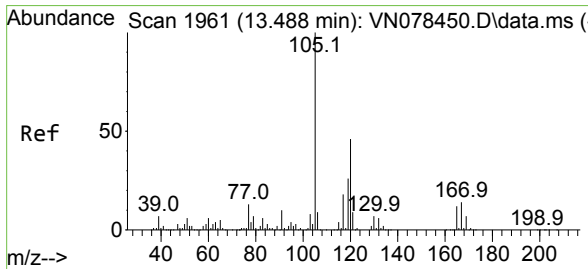
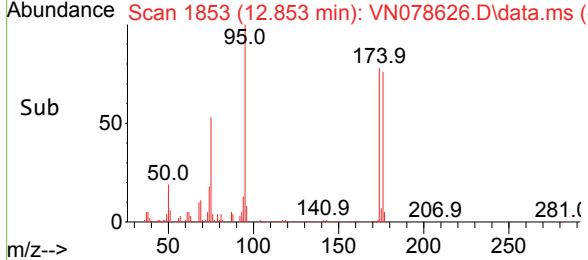
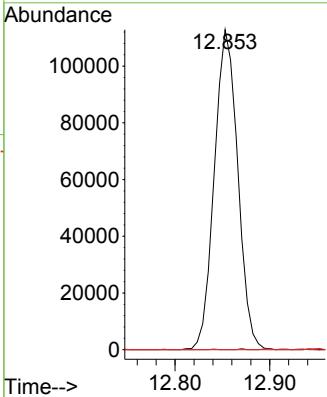
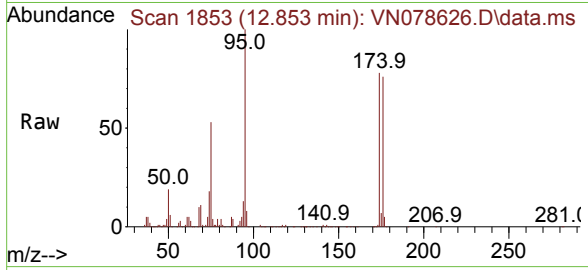


#81
 trans-1,4-Dichloro-2-butene
 Concen: 66.696 ug/l
 RT: 12.853 min Scan# 1853
 Delta R.T. 0.112 min
 Lab File: VN078626.D
 Acq: 21 Jul 2023 20:15

Instrument : MSVOA_N
 ClientSampleId : PB155423TB

Tgt Ion: 75 Resp: 193922

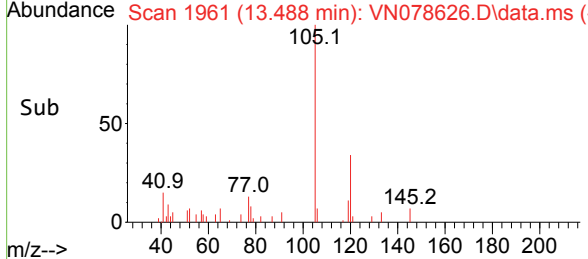
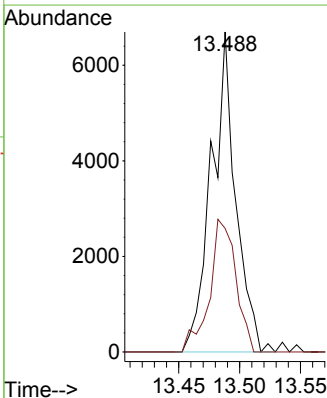
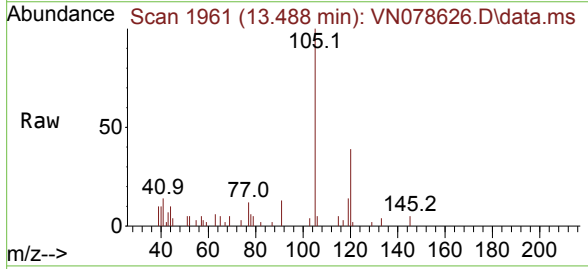
Ion	Ratio	Lower	Upper
75	100		
53	0.0	67.4	101.2#
89	0.0	38.8	58.2#

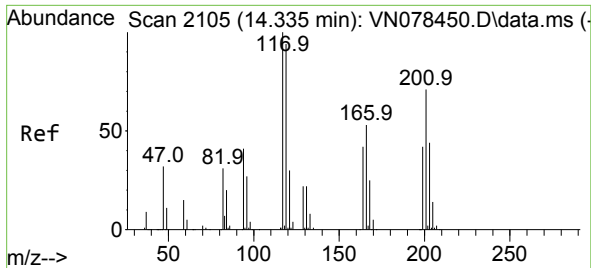


#84
 1,2,4-Trimethylbenzene
 Concen: 0.408 ug/l
 RT: 13.488 min Scan# 1961
 Delta R.T. 0.000 min
 Lab File: VN078626.D
 Acq: 21 Jul 2023 20:15

Tgt Ion: 105 Resp: 9295

Ion	Ratio	Lower	Upper
105	100		
120	44.8	22.0	66.0

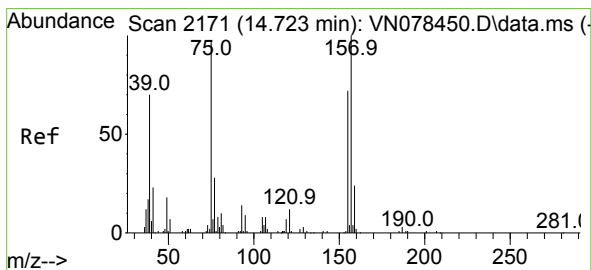
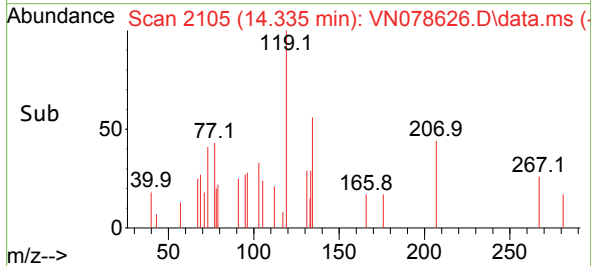
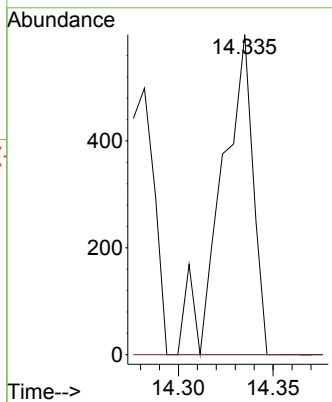
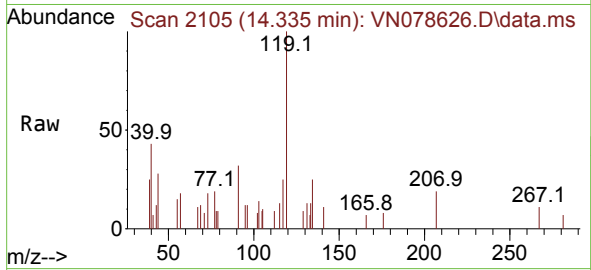




#90
 Hexachloroethane
 Concen: Below Cal
 RT: 14.335 min Scan# 2105
 Delta R.T. 0.000 min
 Lab File: VN078626.D
 Acq: 21 Jul 2023 20:15

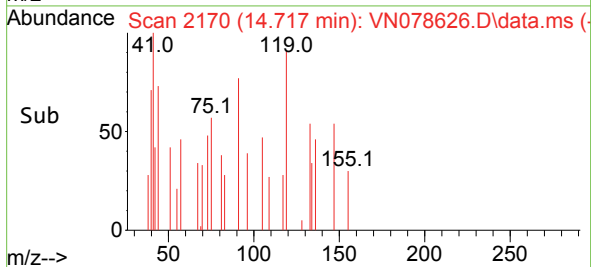
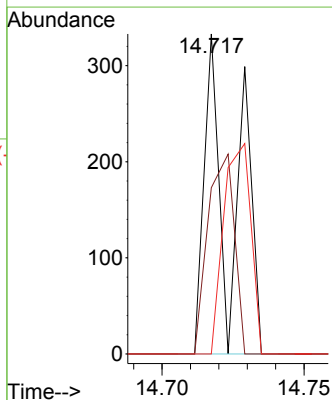
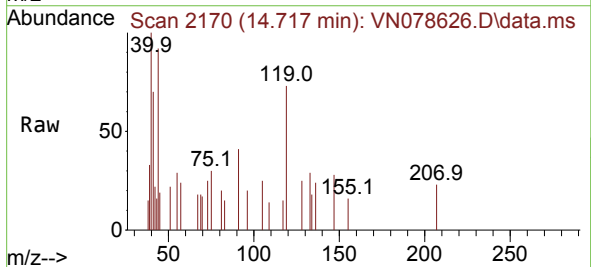
Instrument : MSVOA_N
 ClientSampleId : PB155423TB

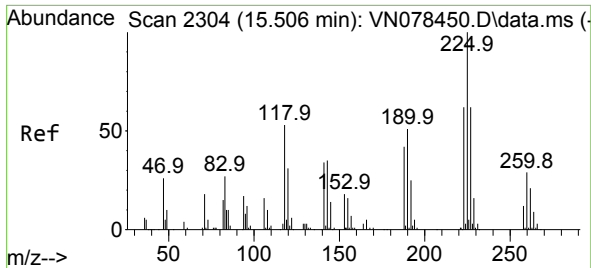
Tgt Ion: 117 Resp: 700
 Ion Ratio Lower Upper
 117 100
 201 0.0 29.3 88.0#



#92
 1,2-Dibromo-3-Chloropropane
 Concen: Below Cal
 RT: 14.717 min Scan# 2170
 Delta R.T. -0.006 min
 Lab File: VN078626.D
 Acq: 21 Jul 2023 20:15

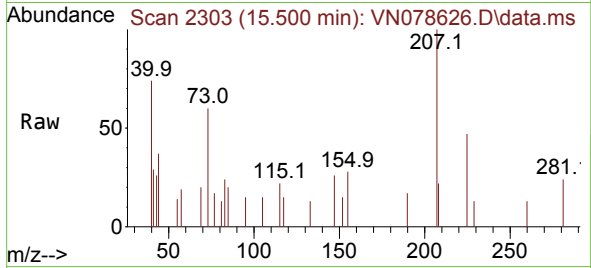
Tgt Ion: 75 Resp: 223
 Ion Ratio Lower Upper
 75 100
 155 60.1 39.1 117.2
 157 65.5 50.3 150.9





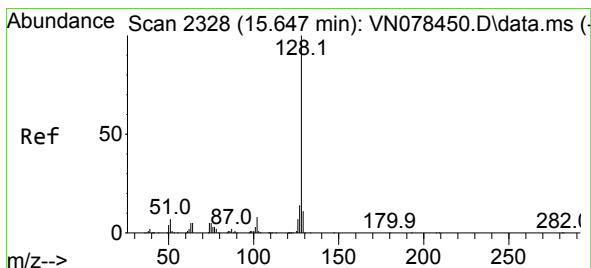
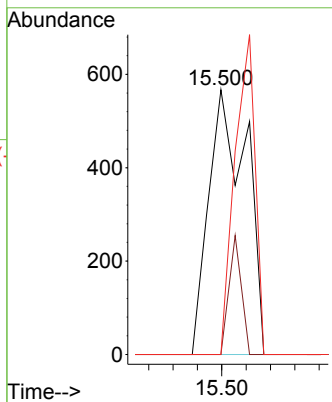
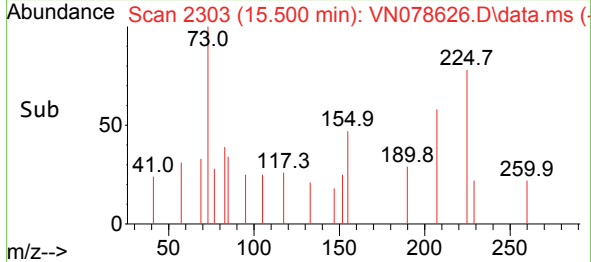
#94
 Hexachlorobutadiene
 Concen: Below Cal
 RT: 15.500 min Scan# 211
 Delta R.T. -0.006 min
 Lab File: VN078626.D
 Acq: 21 Jul 2023 20:15

Instrument : MSVOA_N
 ClientSampleId : PB155423TB

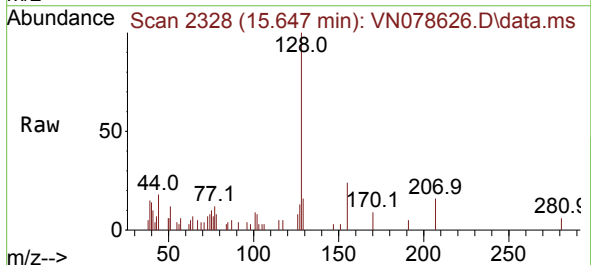


Tgt Ion: 225 Resp: 609

Ion	Ratio	Lower	Upper
225	100		
223	14.8	31.3	93.8#
227	65.0	31.9	95.9

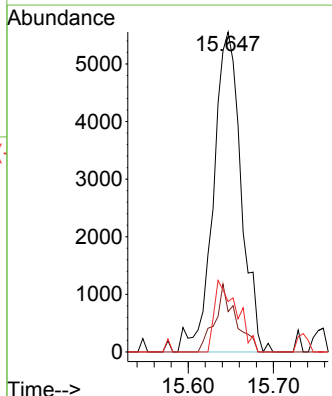
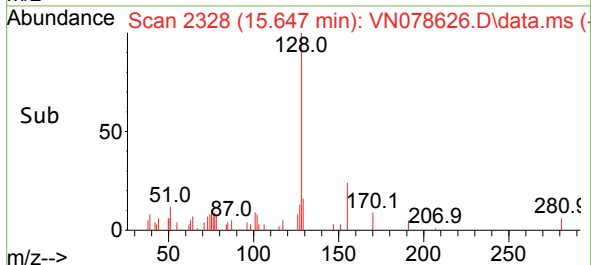


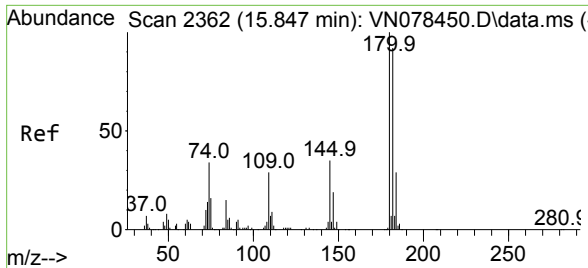
#95
 Naphthalene
 Concen: 1.014 ug/l
 RT: 15.647 min Scan# 2328
 Delta R.T. -0.000 min
 Lab File: VN078626.D
 Acq: 21 Jul 2023 20:15



Tgt Ion: 128 Resp: 12549

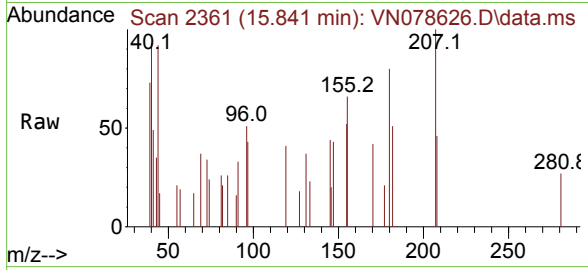
Ion	Ratio	Lower	Upper
128	100		
127	15.8	10.0	15.0#
129	18.3	8.7	13.1#





#96
 1,2,3-Trichlorobenzene
 Concen: 0.329 ug/l
 RT: 15.841 min Scan# 21
 Delta R.T. -0.006 min
 Lab File: VN078626.D
 Acq: 21 Jul 2023 20:15

Instrument :
 MSVOA_N
 ClientSampleId :
 PB155423TB



Tgt Ion:180 Resp: 1369

Ion	Ratio	Lower	Upper
180	100		
182	69.3	46.2	138.6
145	54.9	17.5	52.6#

