

Data Path : Z:\voasrv\HPCHEM1\MSVOA\_N\Data\VN072221\  
 Data File : VN067859.D  
 Acq On : 22 Jul 2021 13:49  
 Operator : JC/MD  
 Sample : VN0722WBSD01  
 Misc : 5.00mL/MSVOA\_N/WATER  
 ALS Vial : 6 Sample Multiplier: 1

Instrument :  
 MSVOA\_N  
 ClientSampleId :  
 VN0722WBSD01

Quant Time: Jul 24 07:12:56 2021  
 Quant Method : Z:\voasrv\HPCHEM1\MSVOA\_N\methods\624N071421W.M  
 Quant Title : METHOD 624 VOLATILE ORGANIC ANALYSIS  
 QLast Update : Wed Jul 14 01:19:19 2021  
 Response via : Initial Calibration

Compound	R.T.	QIon	Response	Conc	Units	Dev(Min)
Internal Standards						
1) Bromochloromethane	7.659	128	65929	30.000	ug/l	0.00
28) 1,4-Difluorobenzene	8.968	114	372447	30.000	ug/l	0.00
57) Chlorobenzene-d5	11.747	117	351643	30.000	ug/l	0.00
System Monitoring Compounds						
27) 1,2-Dichloroethane-d4	8.440	65	164353	30.857	ug/l	0.00
Spiked Amount	30.000	Range 91 - 110	Recovery	=	102.867%	
60) 4-Bromofluorobenzene	12.734	95	164502	28.806	ug/l	0.00
Spiked Amount	30.000	Range 63 - 112	Recovery	=	96.033%	
63) Toluene-d8	10.443	98	486730	30.094	ug/l	0.00
Spiked Amount	30.000	Range 91 - 112	Recovery	=	100.300%	
Target Compounds						
						Qvalue
2) Dichlorodifluoromethane	2.073	85	67734	20.103	ug/l	100
3) Chloromethane	2.303	50	85402	20.293	ug/l	99
4) Vinyl Chloride	2.443	62	132170	20.189	ug/l	100
5) Bromomethane	2.864	94	114727	21.046	ug/l	97
6) Chloroethane	3.022	64	105628	21.666	ug/l	97
7) Trichlorofluoromethane	3.373	101	256310	21.099	ug/l	99
8) Diethyl Ether	3.819	74	47962	21.225	ug/l	98
9) 1,1,2-Trichlorotrifluo...	4.208	101	73237	21.209	ug/l	99
10) 1,1-Dichloroethene	4.173	96	66032	20.647	ug/l	98
11) Methyl Iodide	4.417	142	85961	20.330	ug/l	97
12) Methyl Acetate	4.859	43	95693	21.922	ug/l	98
13) Acrolein	4.039	56	47893	104.745	ug/l #	46
14) Acrylonitrile	5.557	53	198189	103.254	ug/l	99
15) Acetone	4.288	58	49577	104.195	ug/l	92
16) Carbon Disulfide	4.527	76	163612	19.373	ug/l	98
17) Allyl chloride	4.838	41	112494	19.990	ug/l	99
18) Methylene Chloride	5.095	84	86744	19.599	ug/l	94
19) trans-1,2-Dichloroethene	5.597	96	74858	19.630	ug/l	97
20) Diisopropyl ether	6.498	45	267075	20.043	ug/l	99
21) 1,1-Dichloroethane	6.391	63	151264	20.635	ug/l	99
22) cis-1,2-Dichloroethene	7.329	96	94670	20.119	ug/l	94
23) tert-Butyl Alcohol	5.385	59	72526	102.508	ug/l #	100
25) Chloroform	7.820	83	165078	20.238	ug/l	99
26) Cyclohexane	8.094	56	120852	18.921	ug/l #	99
29) 1,1-Dichloropropene	8.222	75	115743	19.806	ug/l	99
30) 2-Butanone	7.340	43	276255	102.086	ug/l #	96
31) 2,2-Dichloropropane	7.327	77	118684	18.205	ug/l	99
32) 1,1,1-Trichloroethane	8.016	97	143574	20.007	ug/l	99
33) Carbon Tetrachloride	8.206	117	121035	19.754	ug/l	96
34) Benzene	8.461	78	353495	20.237	ug/l	99
35) Methacrylonitrile	7.640	41	58225	20.931	ug/l	97
36) 1,2-Dichloroethane	8.531	62	135980	20.912	ug/l #	93
37) Trichloroethene	9.217	130	91178	20.092	ug/l	100
38) Methylcyclohexane	9.459	83	123479	19.078	ug/l	99
39) 1,2-Dichloropropane	9.491	63	90113	20.230	ug/l	98
40) Dibromomethane	9.580	93	67217	20.984	ug/l	99
41) Bromodichloromethane	9.762	83	129253	20.556	ug/l	99
42) Vinyl Acetate	6.436	43	1118115	103.859	ug/l	98
43) Ethyl Acetate	7.415	43	112126	20.495	ug/l	99

Data Path : Z:\voasrv\HPCHEM1\MSVOA\_N\Data\VN072221\  
 Data File : VN067859.D  
 Acq On : 22 Jul 2021 13:49  
 Operator : JC/MD  
 Sample : VN0722WBSD01  
 Misc : 5.00mL/MSVOA\_N/WATER  
 ALS Vial : 6 Sample Multiplier: 1

Instrument :  
 MSVOA\_N  
 ClientSampleId :  
 VN0722WBSD01

Quant Time: Jul 24 07:12:56 2021  
 Quant Method : Z:\voasrv\HPCHEM1\MSVOA\_N\methods\624N071421W.M  
 Quant Title : METHOD 624 VOLATILE ORGANIC ANALYSIS  
 QLast Update : Wed Jul 14 01:19:19 2021  
 Response via : Initial Calibration

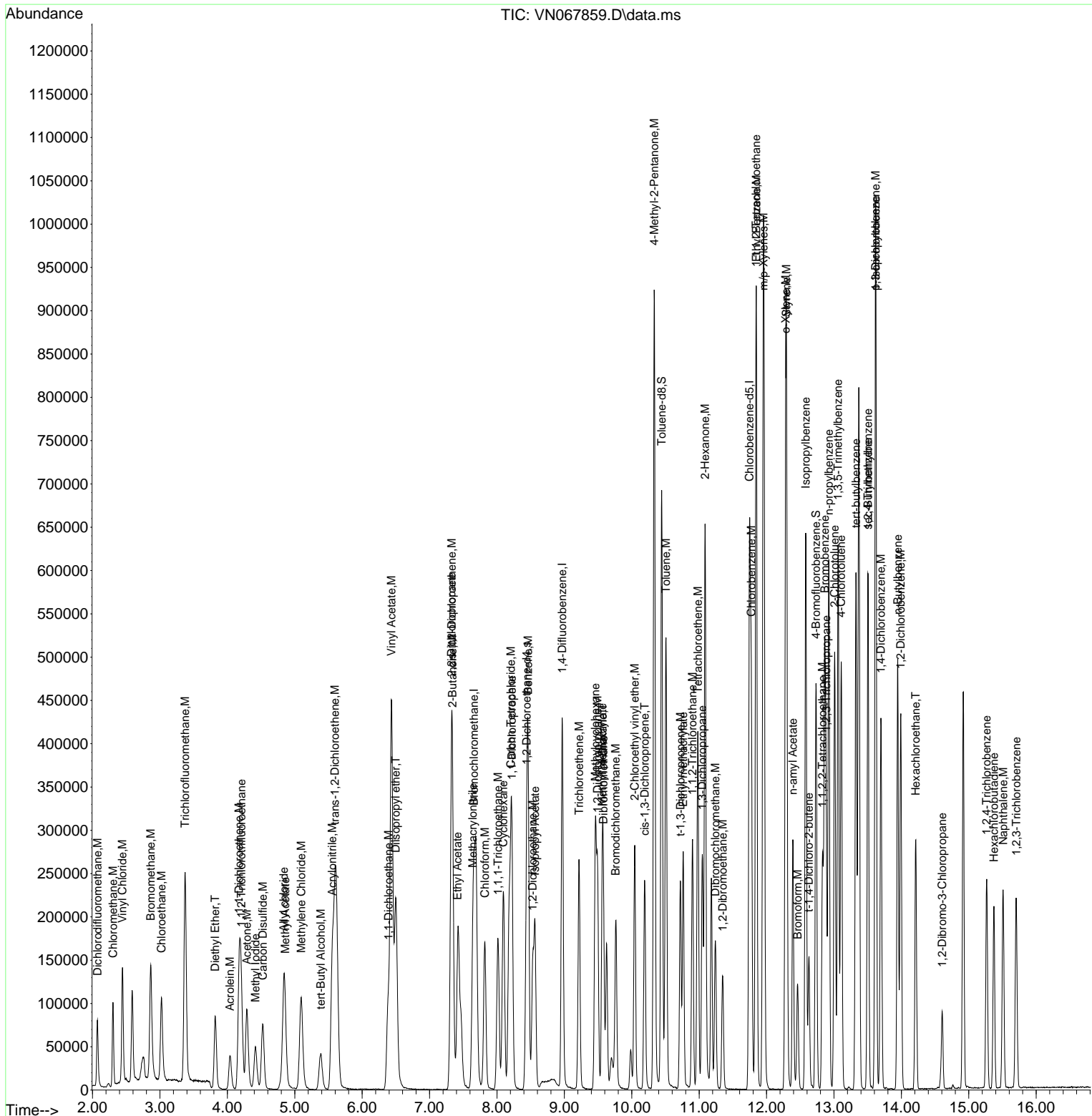
Compound	R.T.	QIon	Response	Conc	Units	Dev(Min)
44) Isopropyl Acetate	8.563	43	200536	20.188	ug/l	99
45) 1,4-Dioxane	9.572	88	29870	397.082	ug/l	98
46) Methyl methacrylate	9.561	41	83994	19.587	ug/l	97
47) n-amyl Acetate	12.390	43	159352	19.542	ug/l	98
48) t-1,3-Dichloropropene	10.722	75	130990	19.331	ug/l	98
49) cis-1,3-Dichloropropene	10.191	75	138365	19.237	ug/l	97
50) 1,1,2-Trichloroethane	10.902	97	93377	20.427	ug/l	97
51) Ethyl methacrylate	10.762	69	139313	19.598	ug/l	99
52) 1,3-Dichloropropane	11.047	76	156503	20.706	ug/l	97
53) Dibromochloromethane	11.240	129	91672	19.158	ug/l	99
54) 1,2-Dibromoethane	11.347	107	93892	19.912	ug/l	99
55) 2-Chloroethyl vinyl ether	10.044	63	126019	91.660	ug/l	99
56) Bromoform	12.460	173	58024	17.307	ug/l #	100
58) 4-Methyl-2-Pentanone	10.333	43	621419	102.917	ug/l	99
59) 2-Hexanone	11.087	43	433940	102.500	ug/l	99
61) Tetrachloroethene	10.982	164	87731	20.310	ug/l	97
62) Toluene	10.508	91	407637	19.709	ug/l	99
64) Chlorobenzene	11.773	112	245636	19.829	ug/l	99
65) 1,1,1,2-Tetrachloroethane	11.843	131	90982	19.936	ug/l	98
66) Ethyl Benzene	11.848	91	445906	19.483	ug/l	99
67) m/p-Xylenes	11.956	106	342495	39.233	ug/l	99
68) o-Xylene	12.283	106	166253	19.293	ug/l	99
69) Styrene	12.296	104	275887	19.360	ug/l	100
70) Isopropylbenzene	12.581	105	433253	19.482	ug/l	100
71) 1,1,2,2-Tetrachloroethane	12.830	83	132153	20.930	ug/l	100
72) 1,2,3-Trichloropropane	12.884	75	160650	30.605	ug/l	65
73) Bromobenzene	12.862	156	96061	18.794	ug/l	98
74) n-propylbenzene	12.924	91	498358	19.557	ug/l	100
75) 2-Chlorotoluene	13.010	91	299847	19.605	ug/l	97
76) 1,3,5-Trimethylbenzene	13.061	105	357074	19.503	ug/l	100
77) t-1,4-Dichloro-2-butene	12.629	75	30606	17.277	ug/l	96
78) 4-Chlorotoluene	13.106	91	302755	19.855	ug/l	100
79) tert-butylbenzene	13.326	119	300006	19.084	ug/l	98
80) 1,2,4-Trimethylbenzene	13.506	105	417391	22.958	ug/l	100
81) sec-Butylbenzene	13.506	105	417391	19.140	ug/l	100
82) p-Isopropyltoluene	13.619	119	339345	18.696	ug/l	99
83) 1,3-Dichlorobenzene	13.619	146	182067	19.074	ug/l	99
84) 1,4-Dichlorobenzene	13.696	146	177820	19.124	ug/l	98
85) n-Butylbenzene	13.946	91	285443	18.956	ug/l	99
86) Hexachloroethane	14.211	117	54311	17.987	ug/l	100
87) 1,2-Dichlorobenzene	13.991	146	174831	19.184	ug/l	99
88) 1,2-Dibromo-3-Chloropr...	14.606	75	22946	20.313	ug/l	98
89) 1,2,4-Trichlorobenzene	15.265	180	75304	18.123	ug/l	98
90) Hexachlorobutadiene	15.373	225	37324	18.688	ug/l	96
91) Naphthalene	15.509	128	210514	17.833	ug/l	100
92) 1,2,3-Trichlorobenzene	15.705	180	71147	17.872	ug/l	99

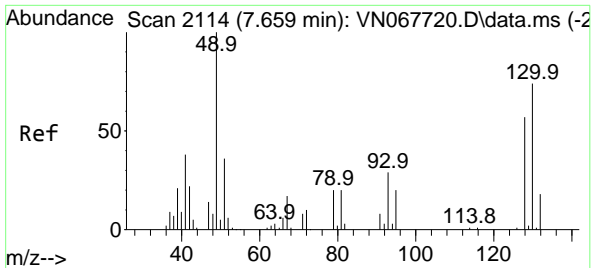
(#) = qualifier out of range (m) = manual integration (+) = signals summed

Data Path : Z:\voasrv\HPCHEM1\MSVOA\_N\Data\VN072221\  
 Data File : VN067859.D  
 Acq On : 22 Jul 2021 13:49  
 Operator : JC/MD  
 Sample : VN0722WBSD01  
 Misc : 5.00mL/MSVOA\_N/WATER  
 ALS Vial : 6 Sample Multiplier: 1

Instrument :  
 MSVOA\_N  
 Client Sampled :  
 VN0722WBSD01

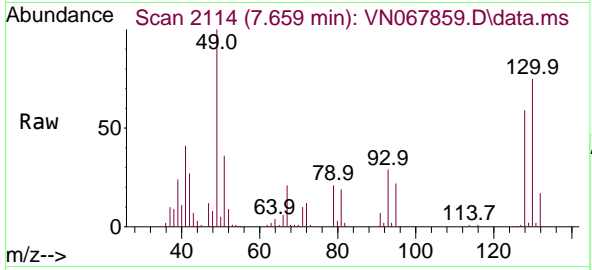
Quant Time: Jul 24 07:12:56 2021  
 Quant Method : Z:\voasrv\HPCHEM1\MSVOA\_N\methods\624N071421W.M  
 Quant Title : METHOD 624 VOLATILE ORGANIC ANALYSIS  
 QLast Update : Wed Jul 14 01:19:19 2021  
 Response via : Initial Calibration





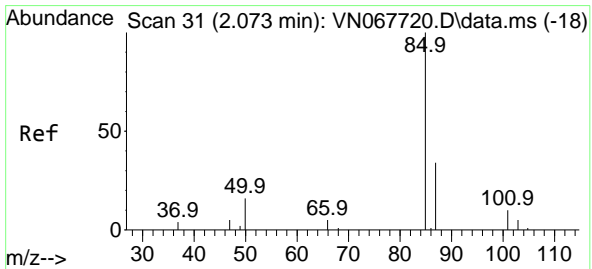
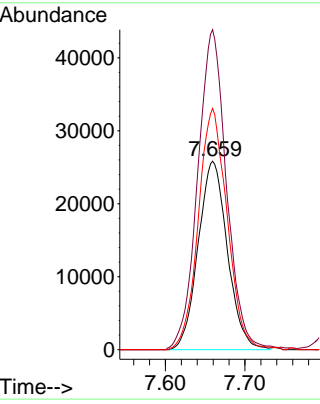
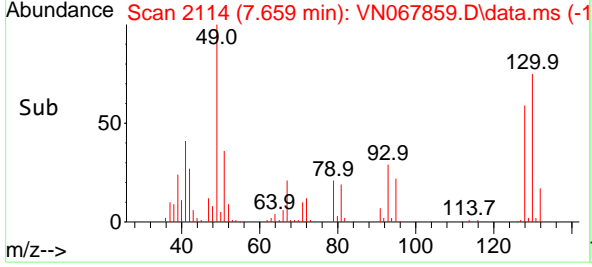
#1  
 Bromochloromethane  
 Concen: 30.000 ug/l  
 RT: 7.659 min Scan# 2114  
 Delta R.T. 0.000 min  
 Lab File: VN067859.D  
 Acq: 22 Jul 2021 13:49

Instrument :  
 MSVOA\_N  
 ClientSampled :  
 VN0722WBSD01

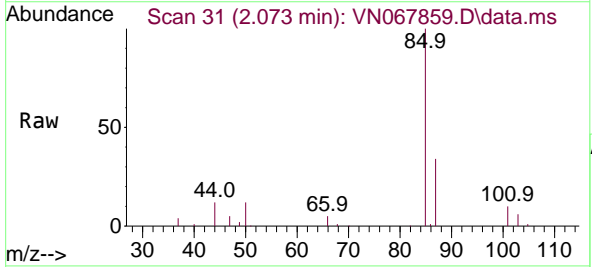


Tgt Ion:128 Resp: 65929

Ion	Ratio	Lower	Upper
128	100		
49	166.7	0.0	433.0
130	126.5	0.0	323.8

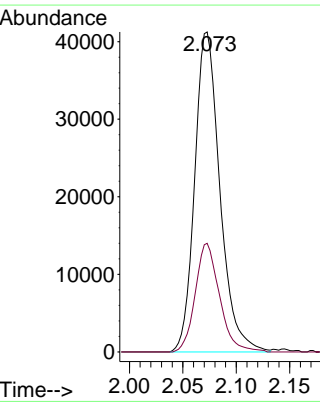
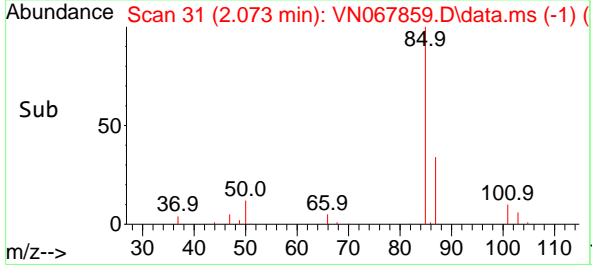


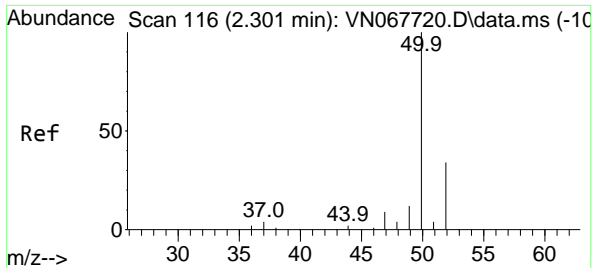
#2  
 Dichlorodifluoromethane  
 Concen: 20.103 ug/l  
 RT: 2.073 min Scan# 31  
 Delta R.T. -0.000 min  
 Lab File: VN067859.D  
 Acq: 22 Jul 2021 13:49



Tgt Ion: 85 Resp: 67734

Ion	Ratio	Lower	Upper
85	100		
87	34.0	17.0	50.9

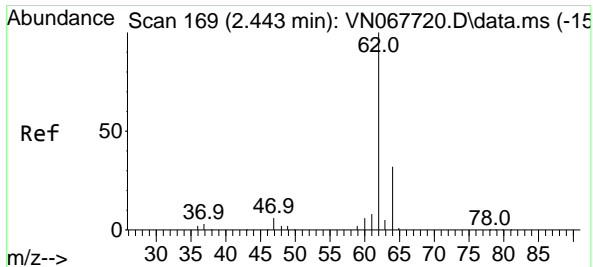
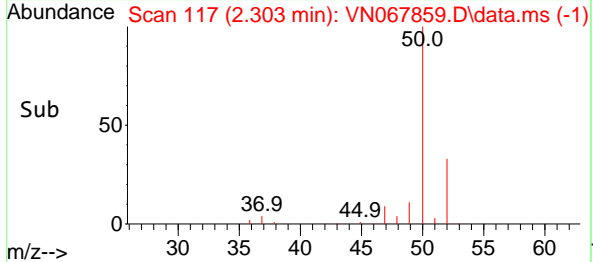
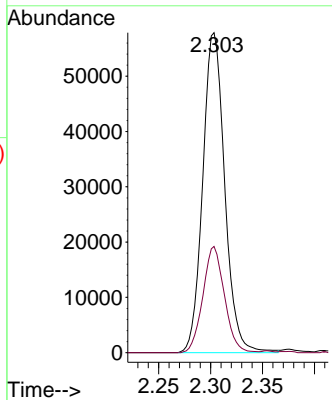
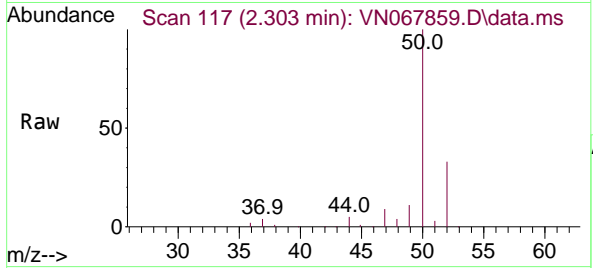




#3  
 Chloromethane  
 Concen: 20.293 ug/l  
 RT: 2.303 min Scan# 117  
 Delta R.T. 0.003 min  
 Lab File: VN067859.D  
 Acq: 22 Jul 2021 13:49

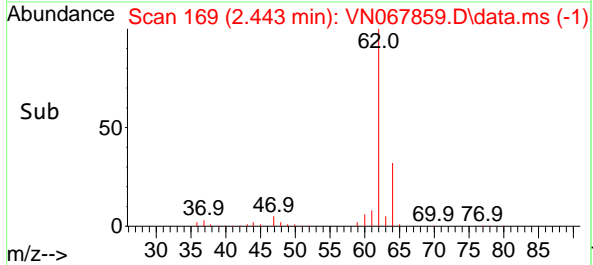
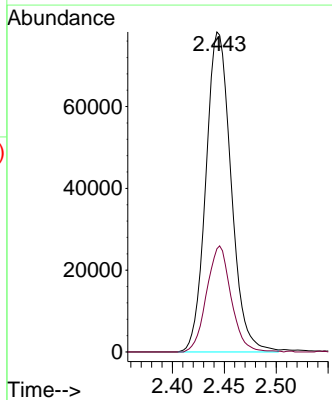
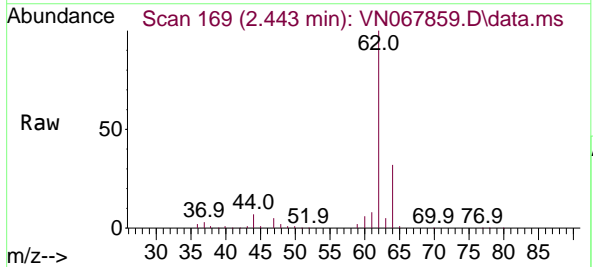
Instrument :  
 MSVOA\_N  
 ClientSampled :  
 VN0722WBSD01

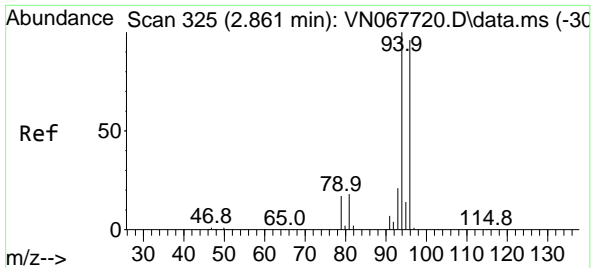
Tgt Ion: 50 Resp: 85402  
 Ion Ratio Lower Upper  
 50 100  
 52 33.2 27.2 40.8



#4  
 Vinyl Chloride  
 Concen: 20.189 ug/l  
 RT: 2.443 min Scan# 169  
 Delta R.T. -0.000 min  
 Lab File: VN067859.D  
 Acq: 22 Jul 2021 13:49

Tgt Ion: 62 Resp: 132170  
 Ion Ratio Lower Upper  
 62 100  
 64 32.3 25.9 38.9

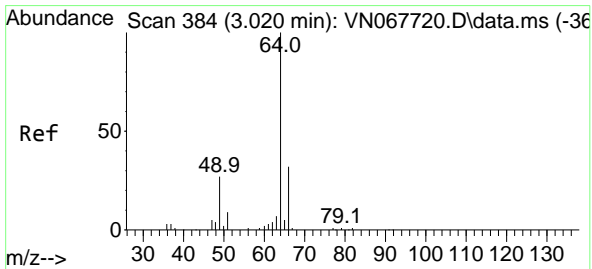
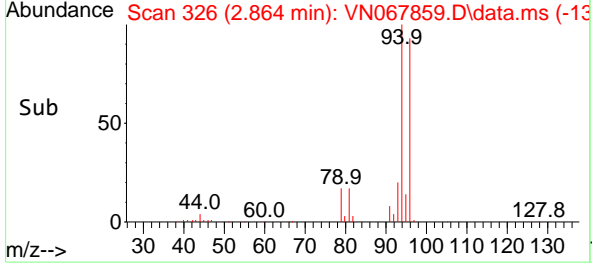
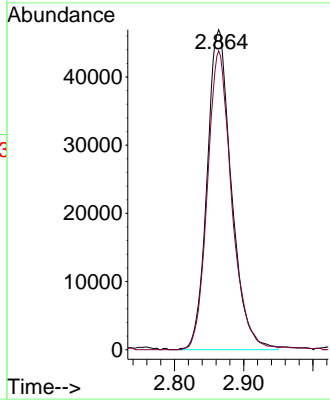
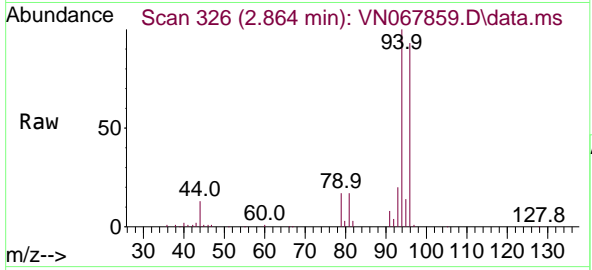




#5  
 Bromomethane  
 Concen: 21.046 ug/l  
 RT: 2.864 min Scan# 326  
 Delta R.T. 0.003 min  
 Lab File: VN067859.D  
 Acq: 22 Jul 2021 13:49

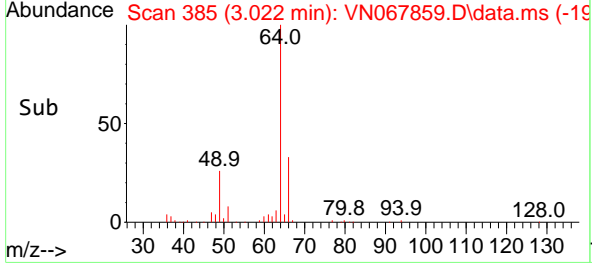
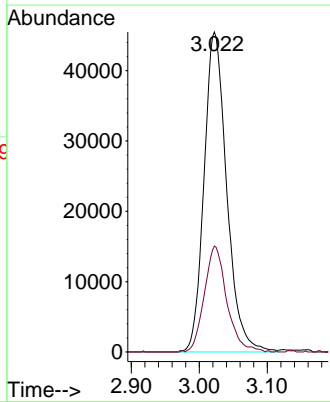
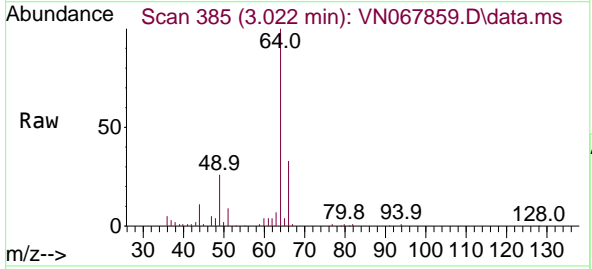
Instrument :  
 MSVOA\_N  
 ClientSampleId :  
 VN0722WBSD01

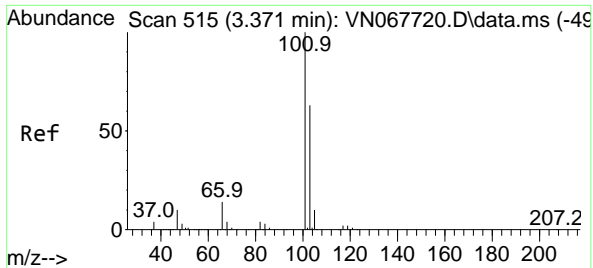
Tgt Ion: 94 Resp: 114727  
 Ion Ratio Lower Upper  
 94 100  
 96 93.4 76.9 115.3



#6  
 Chloroethane  
 Concen: 21.666 ug/l  
 RT: 3.022 min Scan# 385  
 Delta R.T. 0.003 min  
 Lab File: VN067859.D  
 Acq: 22 Jul 2021 13:49

Tgt Ion: 64 Resp: 105628  
 Ion Ratio Lower Upper  
 64 100  
 66 33.1 25.4 38.0

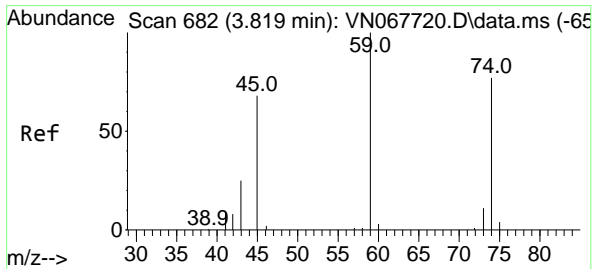
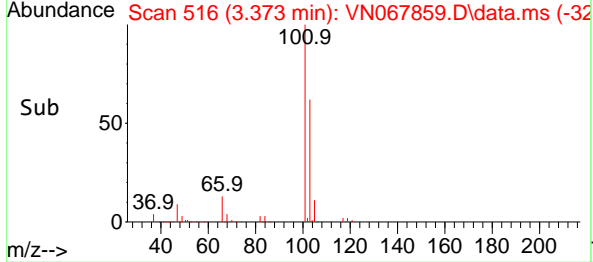
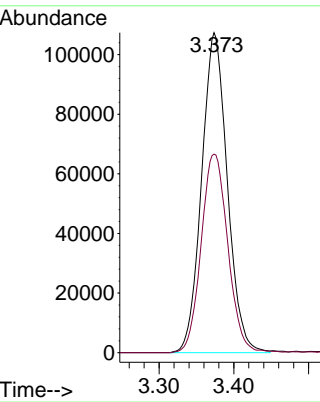
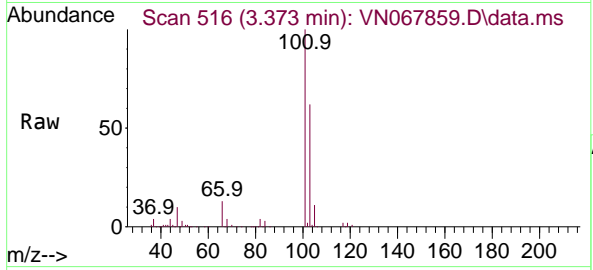




#7  
 Trichlorofluoromethane  
 Concen: 21.099 ug/l  
 RT: 3.373 min Scan# 516  
 Delta R.T. 0.003 min  
 Lab File: VN067859.D  
 Acq: 22 Jul 2021 13:49

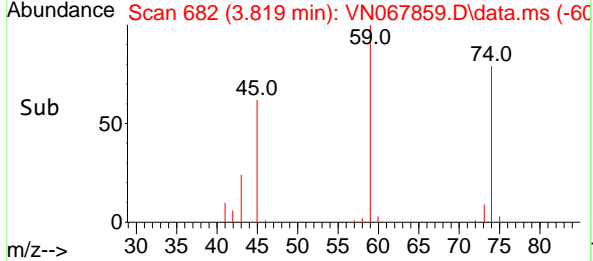
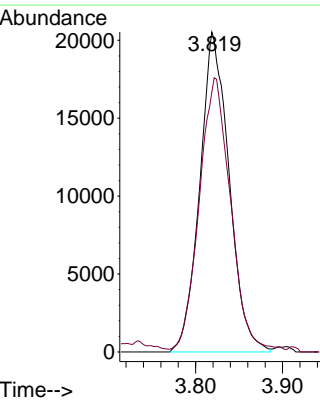
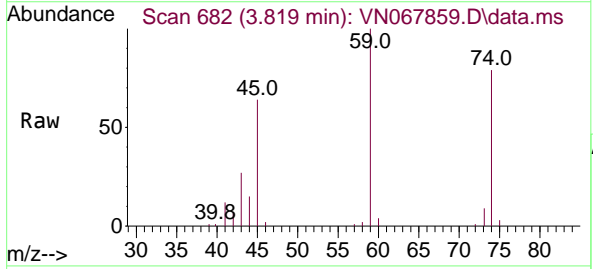
Instrument : MSVOA\_N  
 ClientSampled : VN0722WBSD01

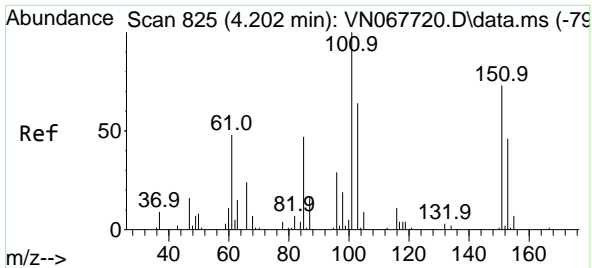
Tgt Ion:101 Resp: 256310  
 Ion Ratio Lower Upper  
 101 100  
 103 62.0 50.3 75.5



#8  
 Diethyl Ether  
 Concen: 21.225 ug/l  
 RT: 3.819 min Scan# 682  
 Delta R.T. -0.000 min  
 Lab File: VN067859.D  
 Acq: 22 Jul 2021 13:49

Tgt Ion: 74 Resp: 47962  
 Ion Ratio Lower Upper  
 74 100  
 45 89.2 17.5 157.1

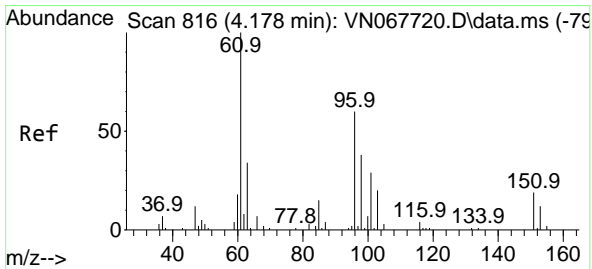
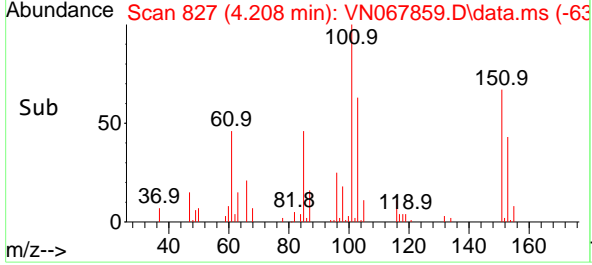
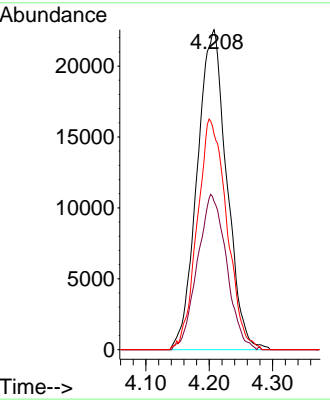
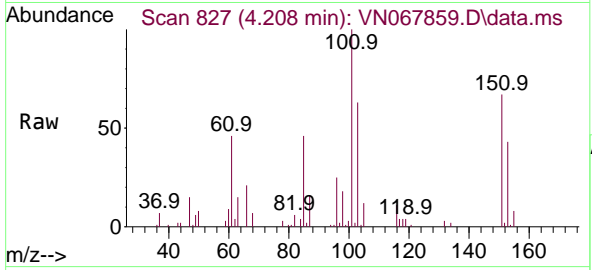




#9  
 1,1,2-Trichlorotrifluoroethane  
 Concen: 21.209 ug/l  
 RT: 4.208 min Scan# 827  
 Delta R.T. 0.005 min  
 Lab File: VN067859.D  
 Acq: 22 Jul 2021 13:49

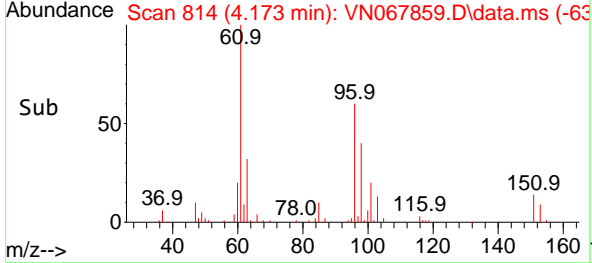
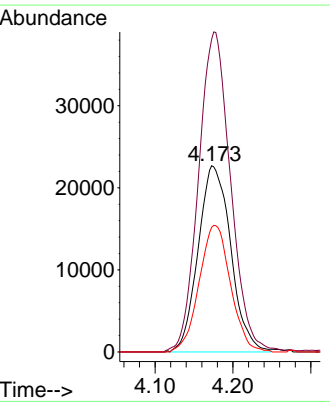
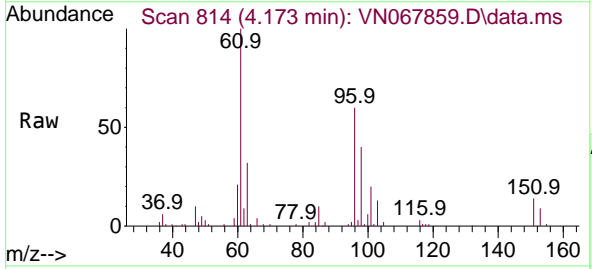
Instrument :  
 MSVOA\_N  
 ClientSampled :  
 VN0722WBSD01

Tgt Ion	Resp	Lower	Upper
101	73237		
101	100		
85	47.9	0.0	98.0
151	72.1	0.0	143.8

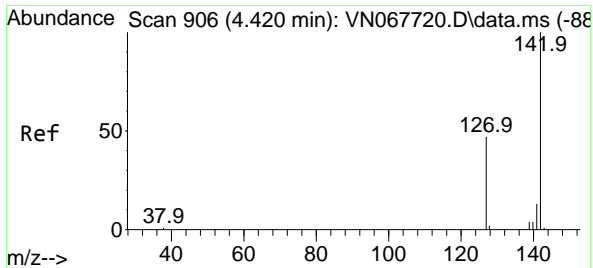


#10  
 1,1-Dichloroethene  
 Concen: 20.647 ug/l  
 RT: 4.173 min Scan# 814  
 Delta R.T. -0.005 min  
 Lab File: VN067859.D  
 Acq: 22 Jul 2021 13:49

Tgt Ion	Resp	Lower	Upper
96	66032		
96	100		
61	165.9	133.9	200.9
98	66.9	50.5	75.7

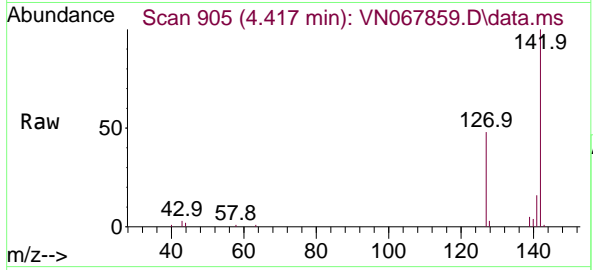




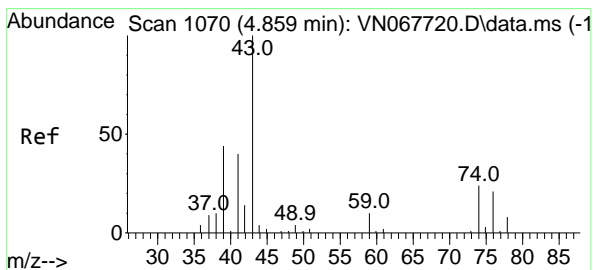
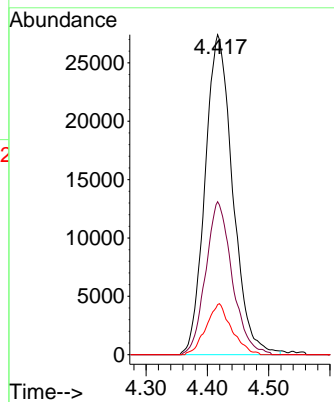
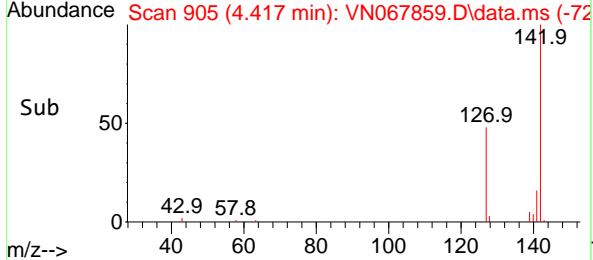


#11  
 Methyl Iodide  
 Concen: 20.330 ug/l  
 RT: 4.417 min Scan# 905  
 Delta R.T. -0.003 min  
 Lab File: VN067859.D  
 Acq: 22 Jul 2021 13:49

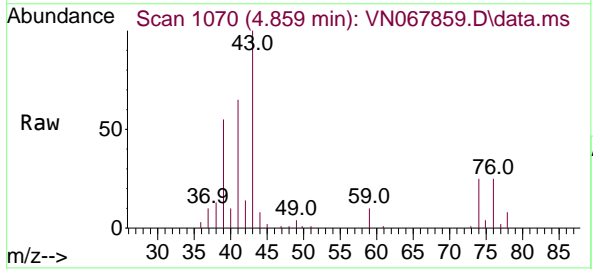
Instrument :  
 MSVOA\_N  
 ClientSampled :  
 VN0722WBSD01



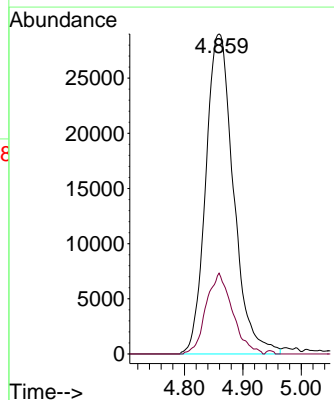
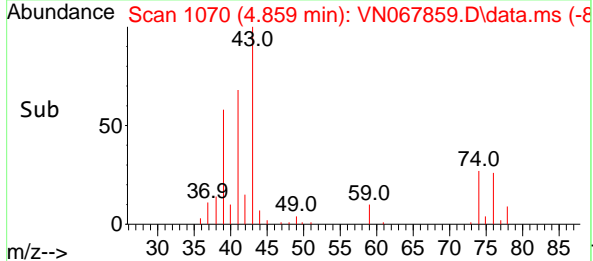
Tgt Ion:142 Resp: 85961  
 Ion Ratio Lower Upper  
 142 100  
 127 48.1 23.4 70.2  
 141 15.8 6.7 20.0

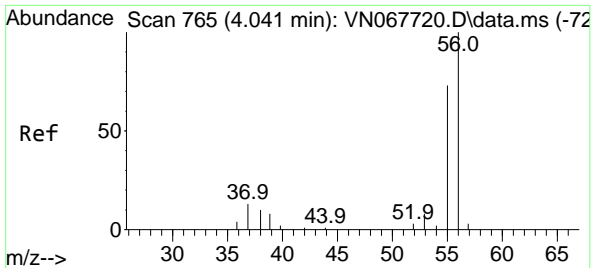


#12  
 Methyl Acetate  
 Concen: 21.922 ug/l  
 RT: 4.859 min Scan# 1070  
 Delta R.T. -0.000 min  
 Lab File: VN067859.D  
 Acq: 22 Jul 2021 13:49



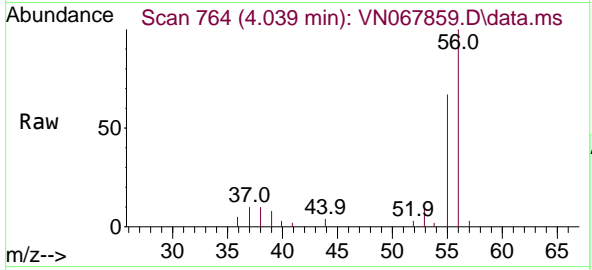
Tgt Ion: 43 Resp: 95693  
 Ion Ratio Lower Upper  
 43 100  
 74 25.5 19.8 29.6



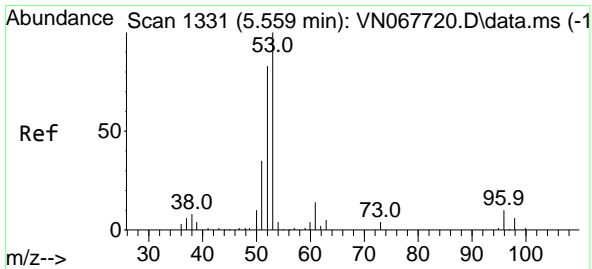
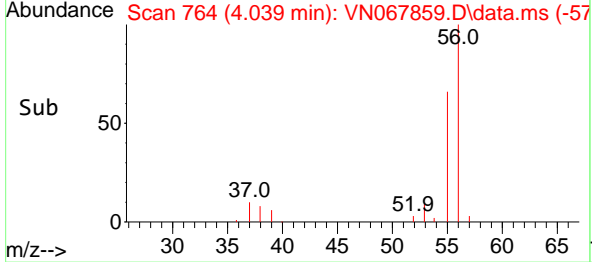
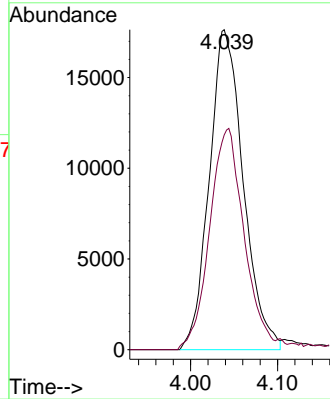


#13  
 Acrolein  
 Concen: 104.745 ug/l  
 RT: 4.039 min Scan# 764  
 Delta R.T. -0.003 min  
 Lab File: VN067859.D  
 Acq: 22 Jul 2021 13:49

Instrument :  
 MSVOA\_N  
 ClientSampled :  
 VN0722WBSD01

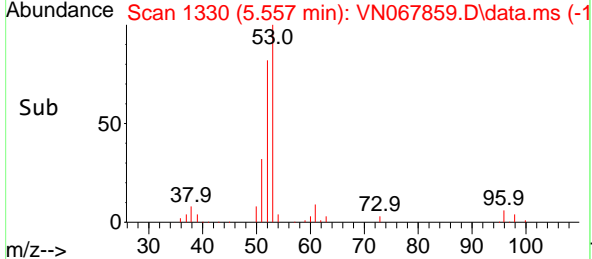
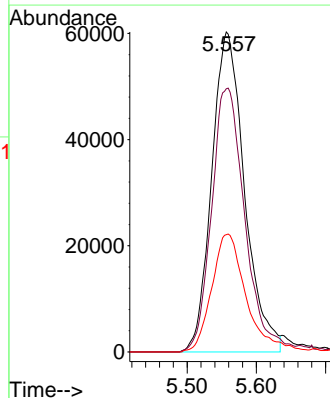
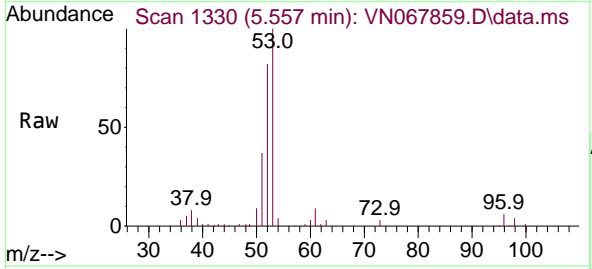


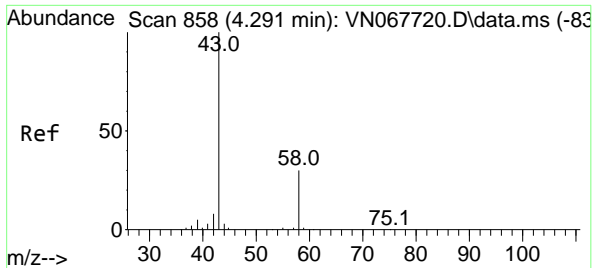
Tgt Ion: 56 Resp: 47893  
 Ion Ratio Lower Upper  
 56 100  
 55 69.9 0.2 0.2#



#14  
 Acrylonitrile  
 Concen: 103.254 ug/l  
 RT: 5.557 min Scan# 1330  
 Delta R.T. -0.003 min  
 Lab File: VN067859.D  
 Acq: 22 Jul 2021 13:49

Tgt Ion: 53 Resp: 198189  
 Ion Ratio Lower Upper  
 53 100  
 52 83.2 41.3 123.7  
 51 38.2 18.4 55.0

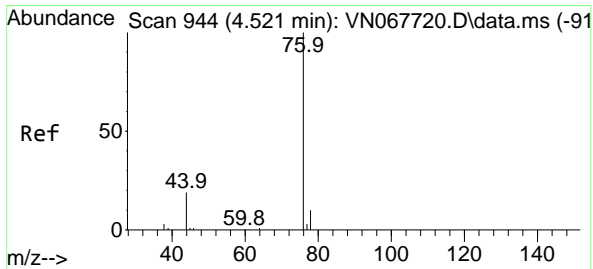
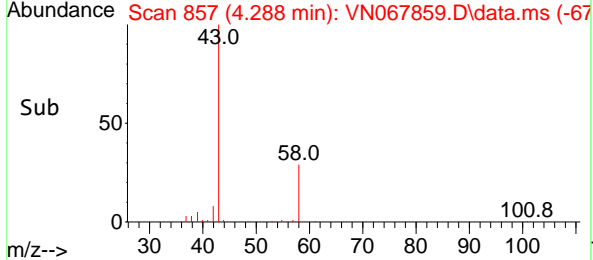
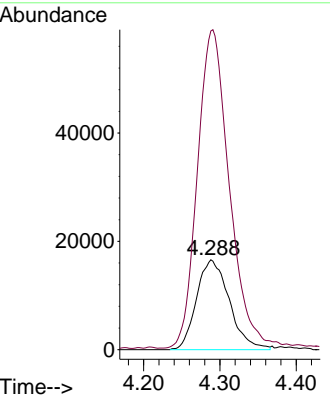
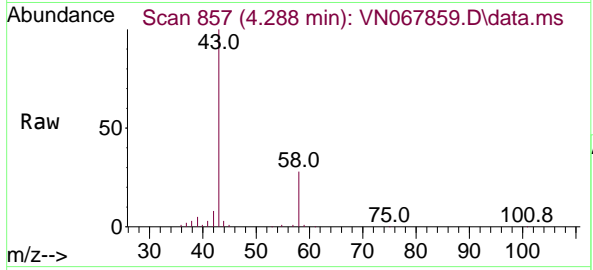




#15  
 Acetone  
 Concen: 104.195 ug/l  
 RT: 4.288 min Scan# 857  
 Delta R.T. -0.003 min  
 Lab File: VN067859.D  
 Acq: 22 Jul 2021 13:49

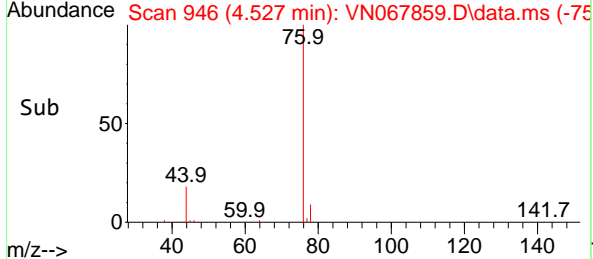
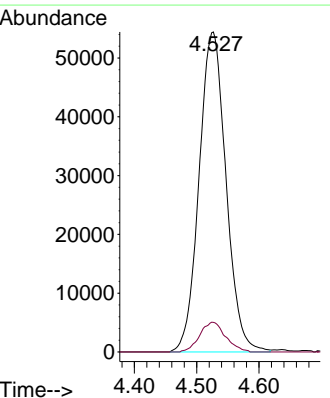
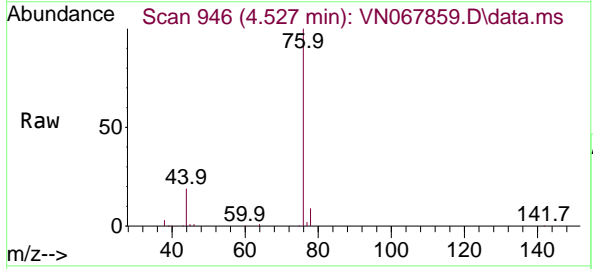
Instrument :  
 MSVOA\_N  
 ClientSampled :  
 VN0722WBSD01

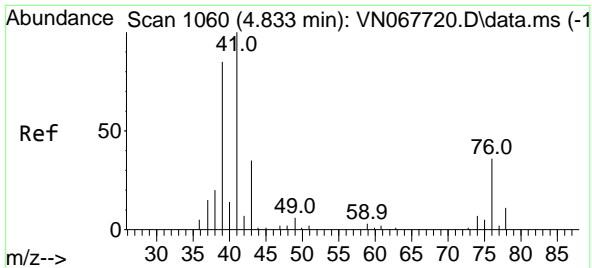
Tgt Ion: 58 Resp: 49577  
 Ion Ratio Lower Upper  
 58 100  
 43 351.3 268.2 402.4



#16  
 Carbon Disulfide  
 Concen: 19.373 ug/l  
 RT: 4.527 min Scan# 946  
 Delta R.T. 0.005 min  
 Lab File: VN067859.D  
 Acq: 22 Jul 2021 13:49

Tgt Ion: 76 Resp: 163612  
 Ion Ratio Lower Upper  
 76 100  
 78 9.3 7.9 11.9

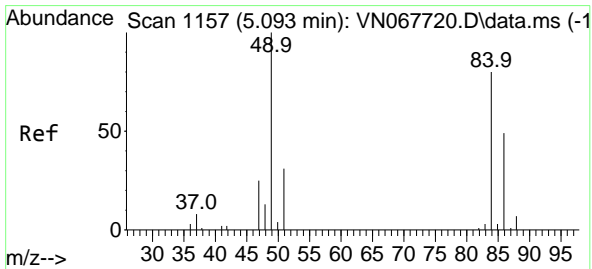
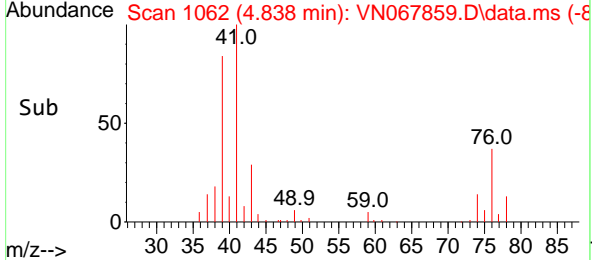
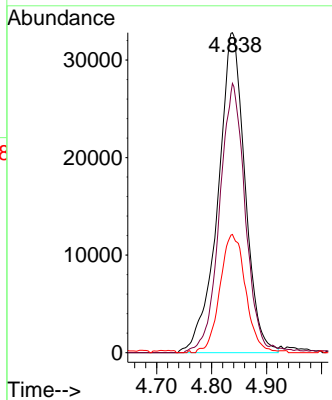
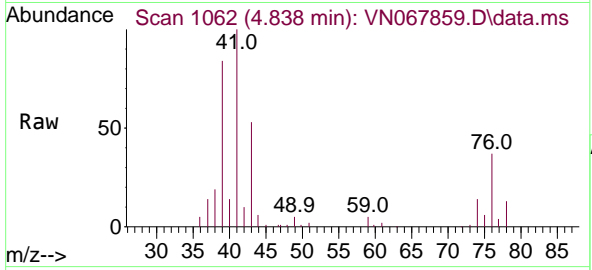




#17  
 Allyl chloride  
 Concen: 19.990 ug/l  
 RT: 4.838 min Scan# 1062  
 Delta R.T. 0.005 min  
 Lab File: VN067859.D  
 Acq: 22 Jul 2021 13:49

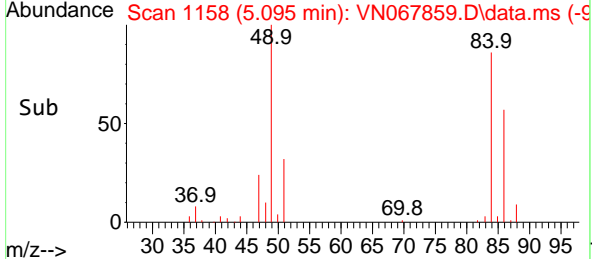
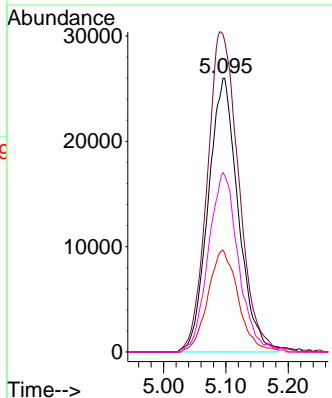
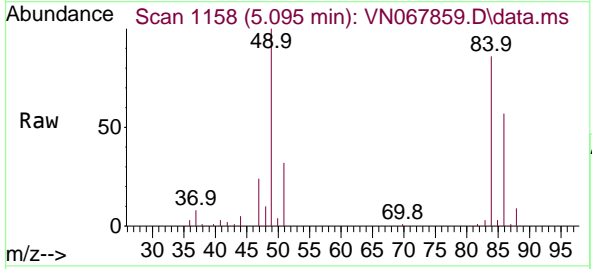
Instrument :  
 MSVOA\_N  
 ClientSampled :  
 VN0722WBSD01

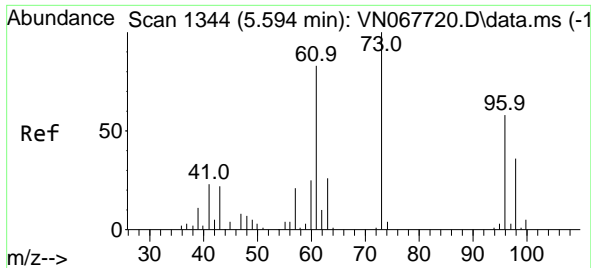
Tgt Ion	Resp	Lower	Upper
41	112494		
39	84.2	42.4	127.3
76	36.9	17.9	53.8



#18  
 Methylene Chloride  
 Concen: 19.599 ug/l  
 RT: 5.095 min Scan# 1158  
 Delta R.T. 0.003 min  
 Lab File: VN067859.D  
 Acq: 22 Jul 2021 13:49

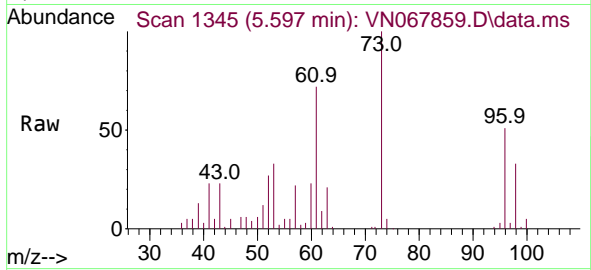
Tgt Ion	Resp	Lower	Upper
84	86744		
49	115.9	100.5	150.7
51	37.2	30.7	46.1
86	65.5	49.4	74.2





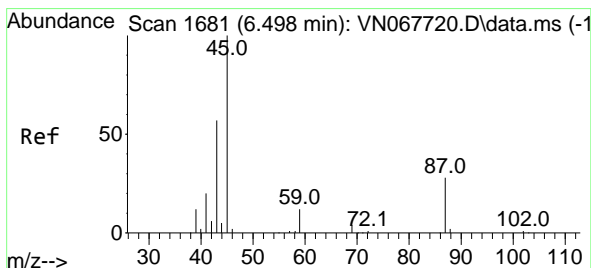
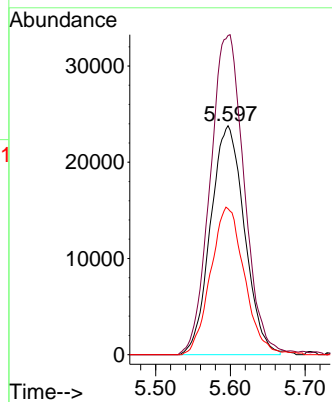
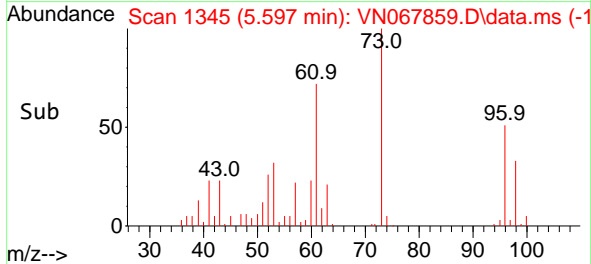
#19  
 trans-1,2-Dichloroethene  
 Concen: 19.630 ug/l  
 RT: 5.597 min Scan# 1345  
 Delta R.T. 0.003 min  
 Lab File: VN067859.D  
 Acq: 22 Jul 2021 13:49

Instrument :  
 MSVOA\_N  
 ClientSampled :  
 VN0722WBSD01

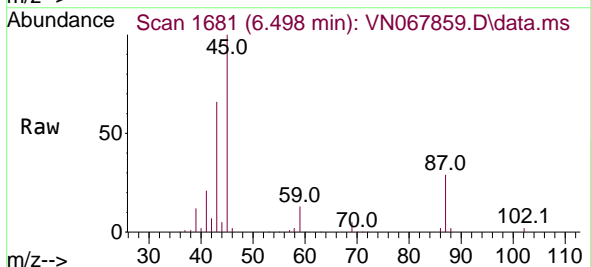


Tgt Ion: 96 Resp: 74858

Ion	Ratio	Lower	Upper
96	100		
61	138.7	114.3	171.5
98	63.8	49.3	73.9

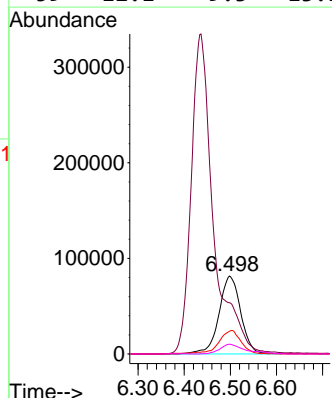
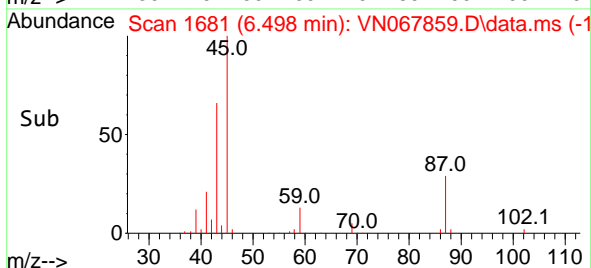


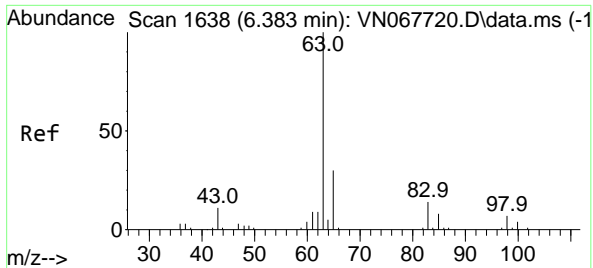
#20  
 Diisopropyl ether  
 Concen: 20.043 ug/l  
 RT: 6.498 min Scan# 1681  
 Delta R.T. -0.000 min  
 Lab File: VN067859.D  
 Acq: 22 Jul 2021 13:49



Tgt Ion: 45 Resp: 267075

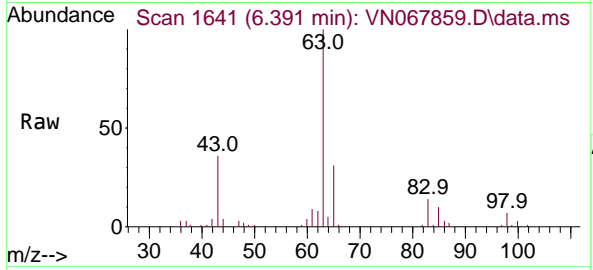
Ion	Ratio	Lower	Upper
45	100		
43	63.9	51.8	77.6
87	29.1	22.5	33.7
59	12.1	9.3	13.9





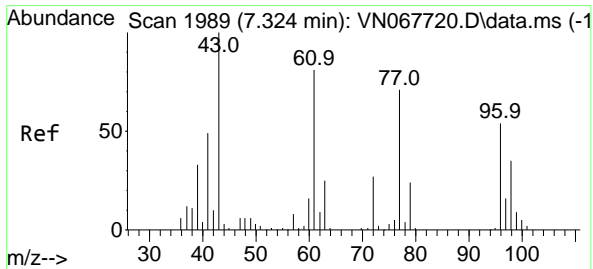
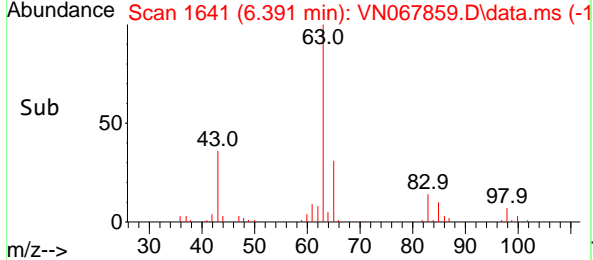
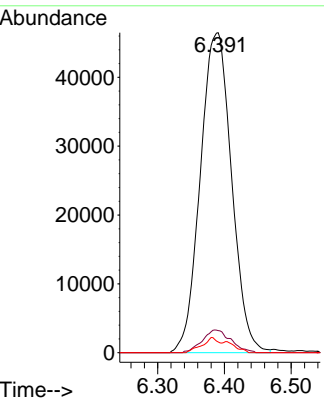
#21  
 1,1-Dichloroethane  
 Concen: 20.635 ug/l  
 RT: 6.391 min Scan# 1641  
 Delta R.T. 0.008 min  
 Lab File: VN067859.D  
 Acq: 22 Jul 2021 13:49

Instrument :  
 MSVOA\_N  
 ClientSampled :  
 VN0722WBSD01

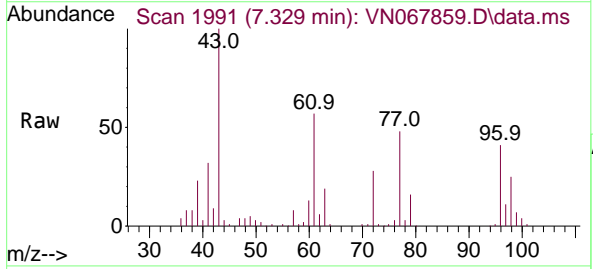


Tgt Ion: 63 Resp: 151264

Ion	Ratio	Lower	Upper
63	100		
98	6.9	3.3	9.8
100	3.3	2.0	5.8

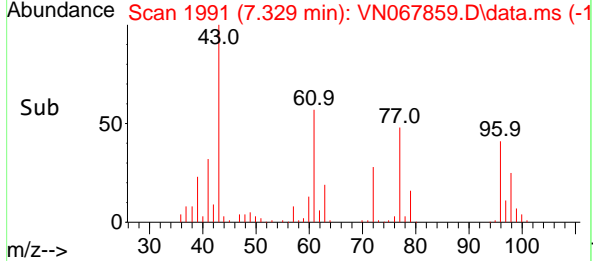
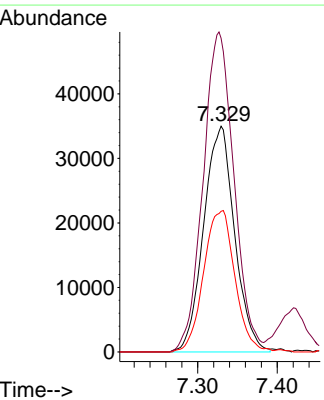


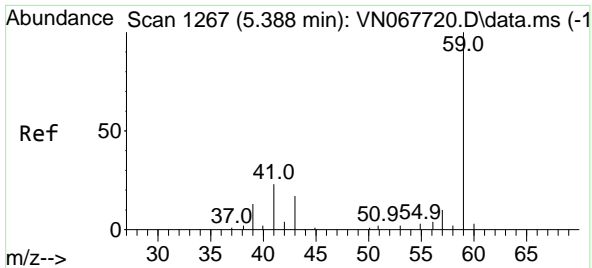
#22  
 cis-1,2-Dichloroethene  
 Concen: 20.119 ug/l  
 RT: 7.329 min Scan# 1991  
 Delta R.T. 0.005 min  
 Lab File: VN067859.D  
 Acq: 22 Jul 2021 13:49



Tgt Ion: 96 Resp: 94670

Ion	Ratio	Lower	Upper
96	100		
61	141.4	121.2	181.8
98	63.0	51.8	77.8

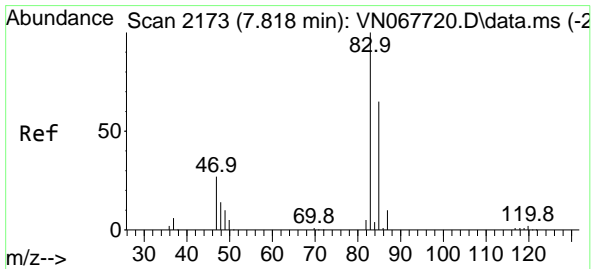
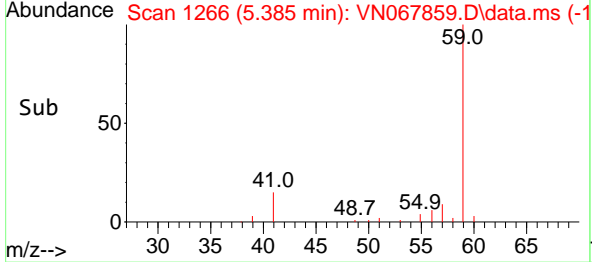
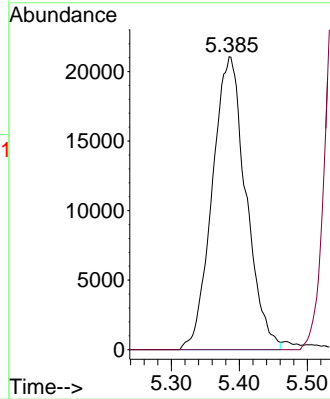
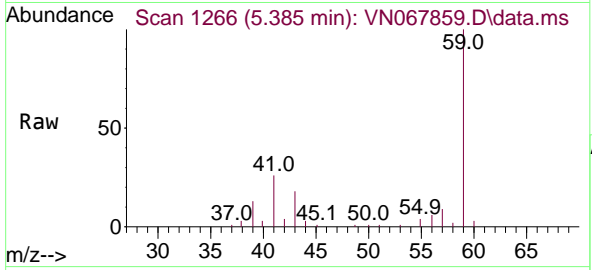




#23  
 tert-Butyl Alcohol  
 Concen: 102.508 ug/l  
 RT: 5.385 min Scan# 1266  
 Delta R.T. -0.003 min  
 Lab File: VN067859.D  
 Acq: 22 Jul 2021 13:49

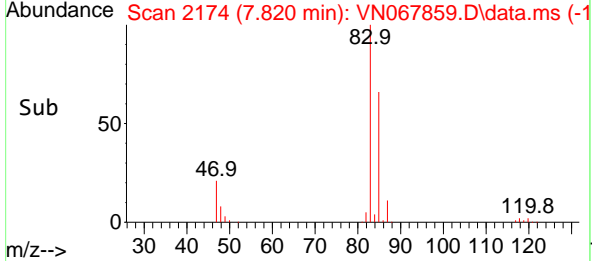
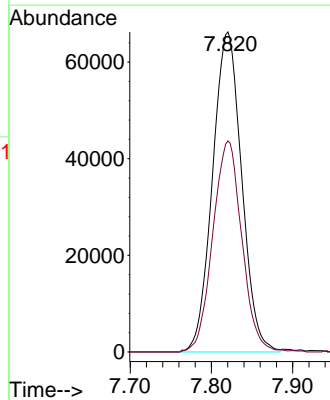
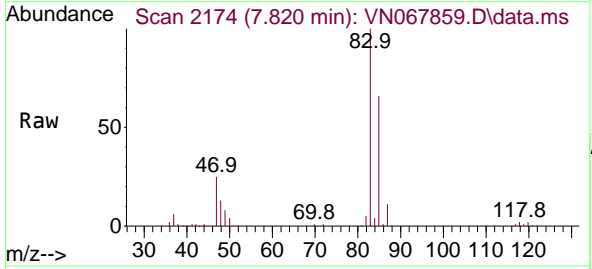
Instrument :  
 MSVOA\_N  
 ClientSampled :  
 VN0722WBSD01

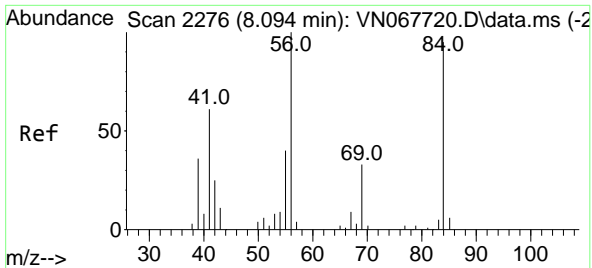
Tgt Ion: 59 Resp: 72526  
 Ion Ratio Lower Upper  
 59 100  
 52 0.0 0.0 0.0



#25  
 Chloroform  
 Concen: 20.238 ug/l  
 RT: 7.820 min Scan# 2174  
 Delta R.T. 0.003 min  
 Lab File: VN067859.D  
 Acq: 22 Jul 2021 13:49

Tgt Ion: 83 Resp: 165078  
 Ion Ratio Lower Upper  
 83 100  
 85 66.0 52.3 78.5

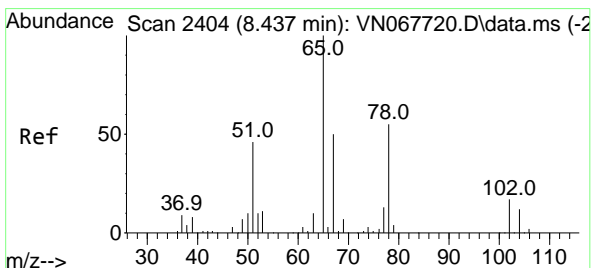
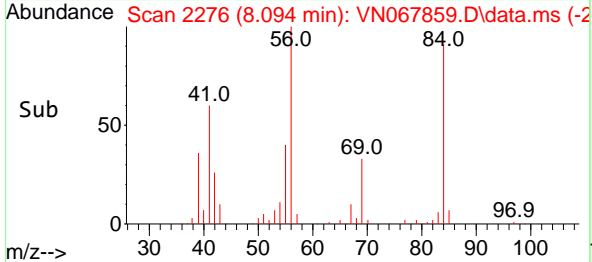
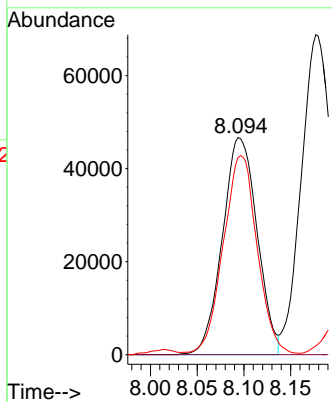
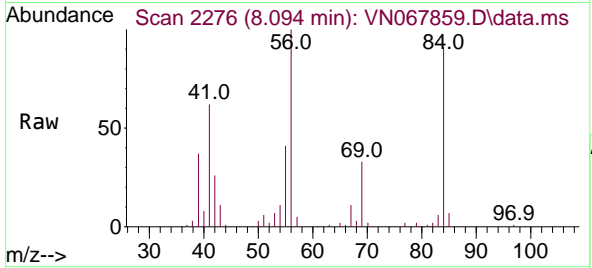




#26  
 Cyclohexane  
 Concen: 18.921 ug/l  
 RT: 8.094 min Scan# 2276  
 Delta R.T. -0.000 min  
 Lab File: VN067859.D  
 Acq: 22 Jul 2021 13:49

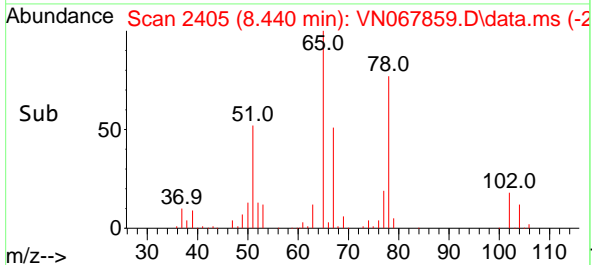
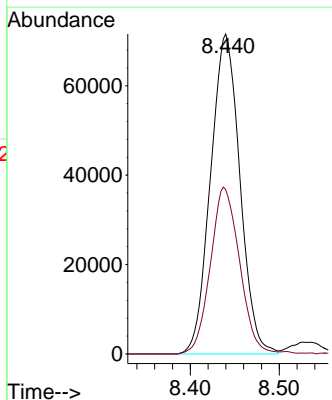
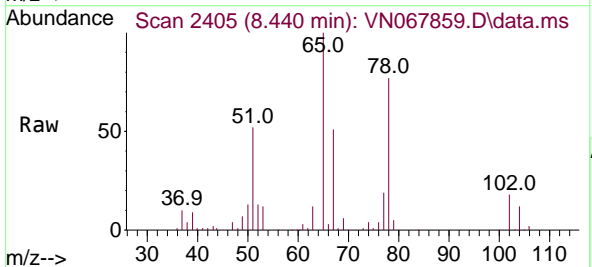
Instrument :  
 MSVOA\_N  
 ClientSampled :  
 VN0722WBSD01

Tgt Ion	Resp	Lower	Upper
56	120852		
56	100		
89	0.0	0.0	0.0
84	89.8	71.4	107.0

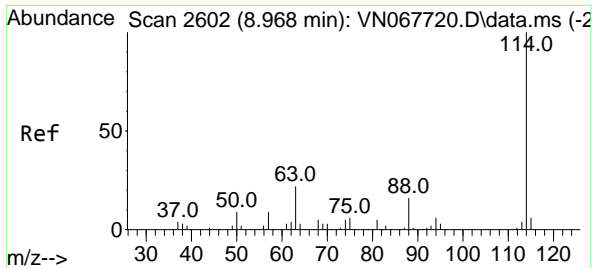


#27  
 1,2-Dichloroethane-d4  
 Concen: 30.857 ug/l  
 RT: 8.440 min Scan# 2405  
 Delta R.T. 0.003 min  
 Lab File: VN067859.D  
 Acq: 22 Jul 2021 13:49

Tgt Ion	Resp	Lower	Upper
65	164353		
65	100		
67	51.7	40.6	60.8



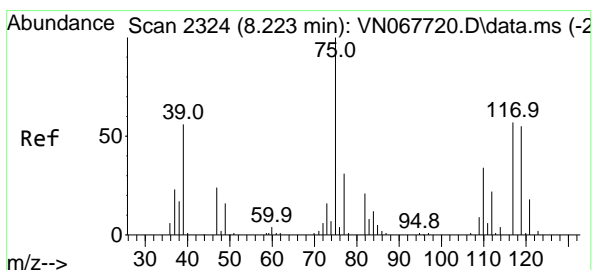
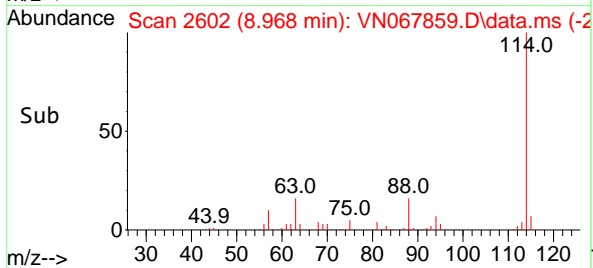
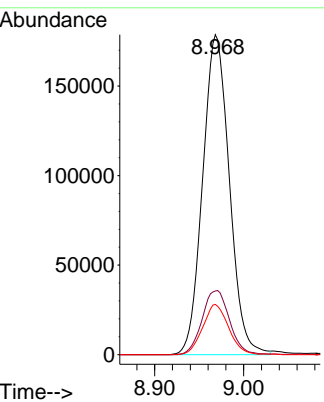
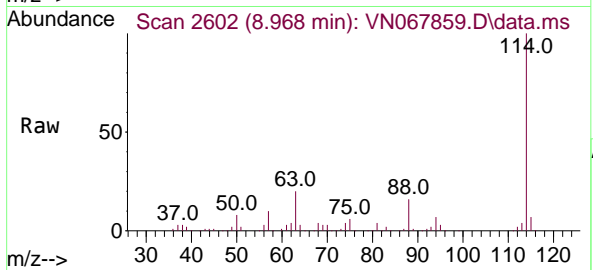




#28  
 1,4-Difluorobenzene  
 Concen: 30.000 ug/l  
 RT: 8.968 min Scan# 2602  
 Delta R.T. -0.000 min  
 Lab File: VN067859.D  
 Acq: 22 Jul 2021 13:49

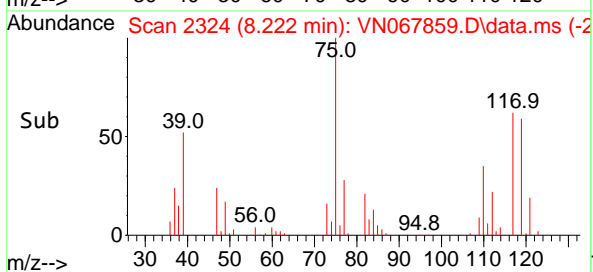
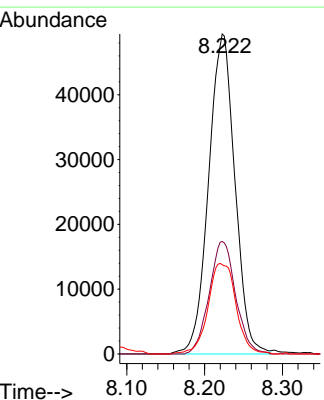
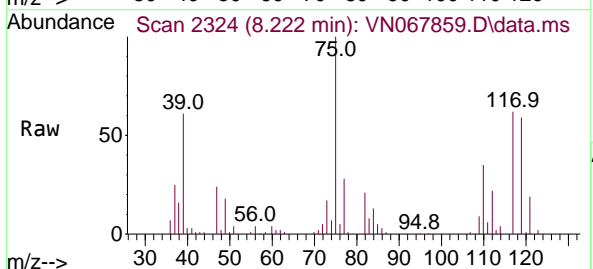
**Instrument :**  
 MSVOA\_N  
**ClientSampled :**  
 VN0722WBSD01

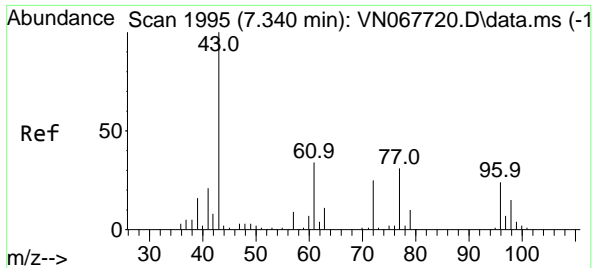
Tgt Ion	Resp	Lower	Upper
114	100		
63	20.6	17.2	25.8
88	15.2	12.4	18.6



#29  
 1,1-Dichloropropene  
 Concen: 19.806 ug/l  
 RT: 8.222 min Scan# 2324  
 Delta R.T. -0.000 min  
 Lab File: VN067859.D  
 Acq: 22 Jul 2021 13:49

Tgt Ion	Resp	Lower	Upper
75	100		
110	35.3	0.0	69.2
77	30.1	0.0	60.4



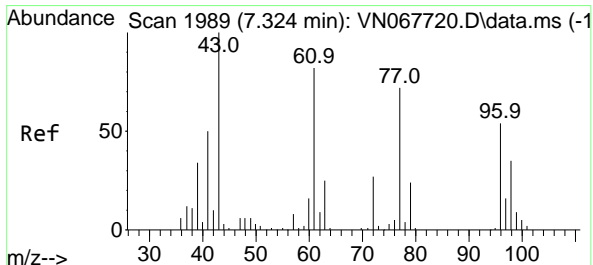
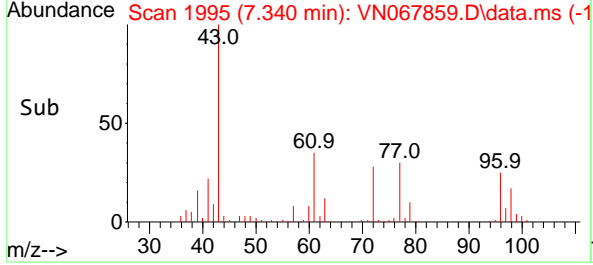
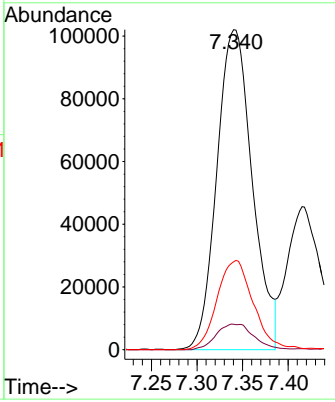
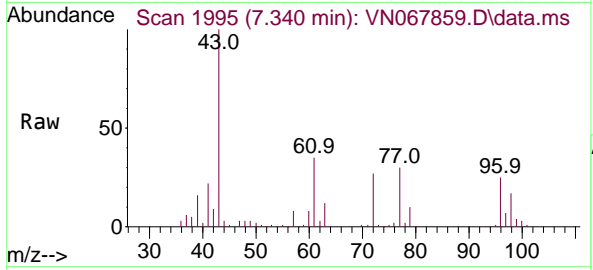


#30  
 2-Butanone  
 Concen: 102.086 ug/l  
 RT: 7.340 min Scan# 1995  
 Delta R.T. -0.000 min  
 Lab File: VN067859.D  
 Acq: 22 Jul 2021 13:49

**Instrument :**  
 MSVOA\_N  
**ClientSampled :**  
 VN0722WBSD01

Tgt Ion: 43 Resp: 276255

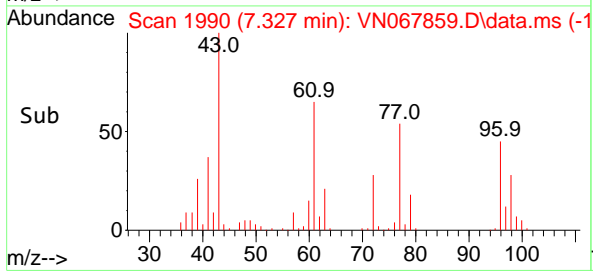
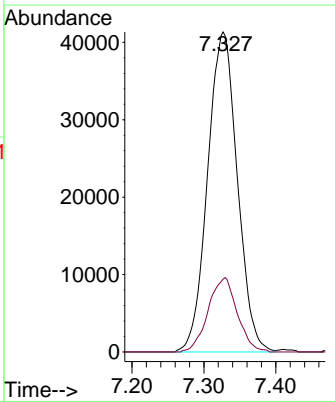
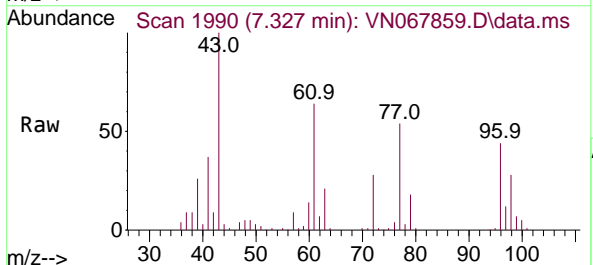
Ion	Ratio	Lower	Upper
43	100		
57	4.6	6.6	9.8#
72	28.2	21.8	32.6

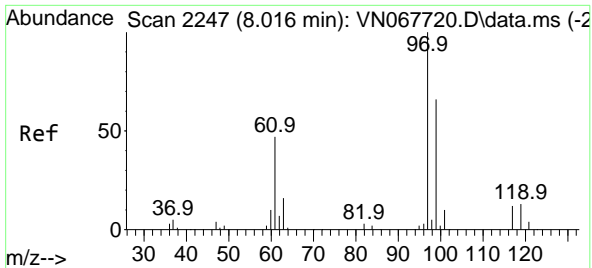


#31  
 2,2-Dichloropropane  
 Concen: 18.205 ug/l  
 RT: 7.327 min Scan# 1990  
 Delta R.T. 0.003 min  
 Lab File: VN067859.D  
 Acq: 22 Jul 2021 13:49

Tgt Ion: 77 Resp: 118684

Ion	Ratio	Lower	Upper
77	100		
97	22.7	17.8	26.6

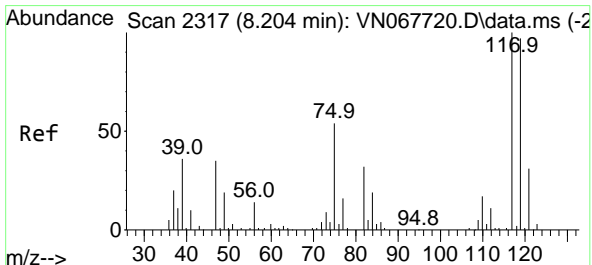
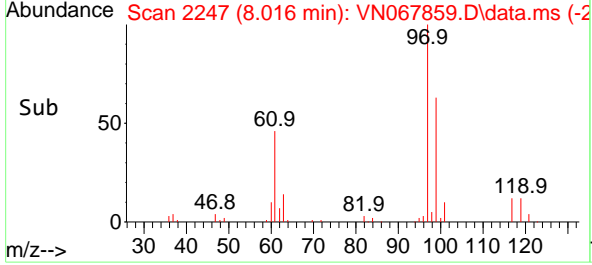
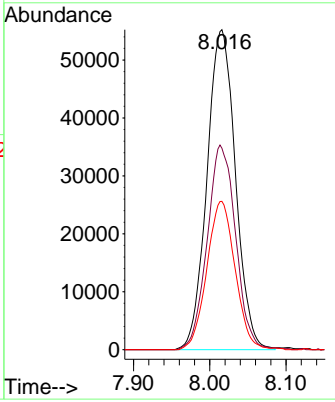
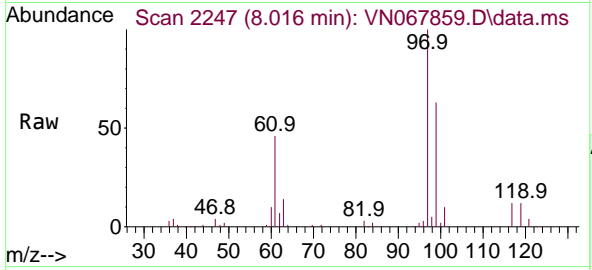




#32  
 1,1,1-Trichloroethane  
 Concen: 20.007 ug/l  
 RT: 8.016 min Scan# 2247  
 Delta R.T. -0.000 min  
 Lab File: VN067859.D  
 Acq: 22 Jul 2021 13:49

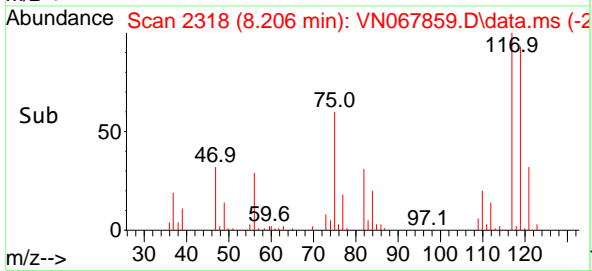
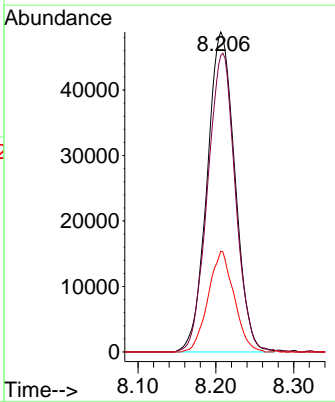
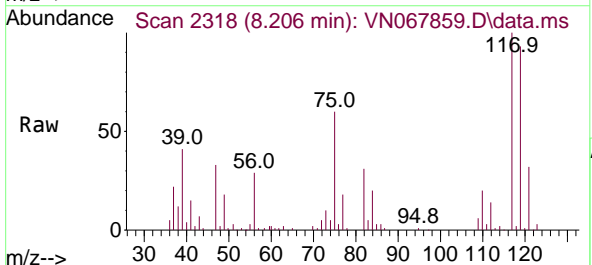
Instrument :  
 MSVOA\_N  
 ClientSampled :  
 VN0722WBSD01

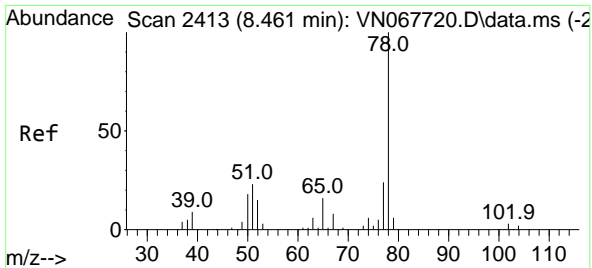
Tgt Ion	Resp	Lower	Upper
97	143574		
97	100		
99	63.7	51.6	77.4
61	45.9	37.6	56.4



#33  
 Carbon Tetrachloride  
 Concen: 19.754 ug/l  
 RT: 8.206 min Scan# 2318  
 Delta R.T. 0.003 min  
 Lab File: VN067859.D  
 Acq: 22 Jul 2021 13:49

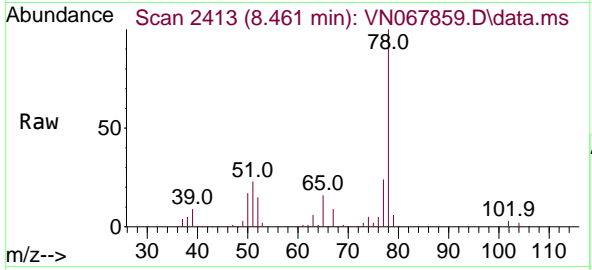
Tgt Ion	Resp	Lower	Upper
117	121035		
117	100		
119	92.6	77.6	116.4
121	31.5	24.6	36.8





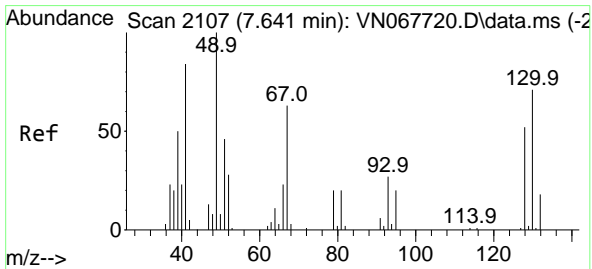
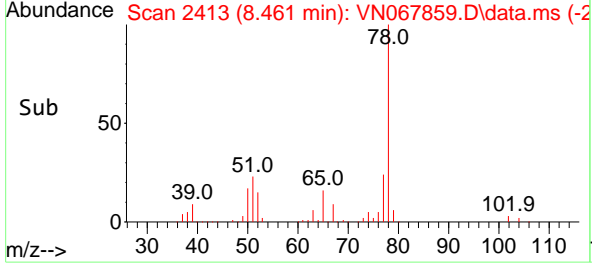
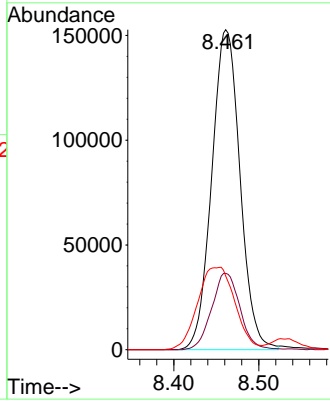
#34  
 Benzene  
 Concen: 20.237 ug/l  
 RT: 8.461 min Scan# 2413  
 Delta R.T. -0.000 min  
 Lab File: VN067859.D  
 Acq: 22 Jul 2021 13:49

Instrument :  
 MSVOA\_N  
 ClientSampled :  
 VN0722WBSD01

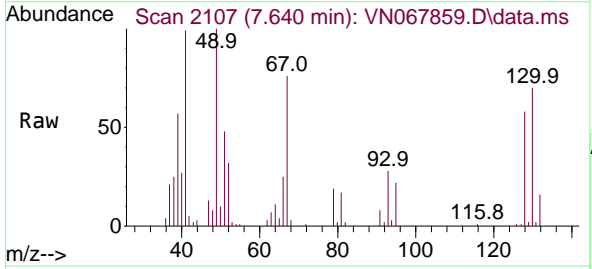


Tgt Ion: 78 Resp: 353495

Ion	Ratio	Lower	Upper
78	100		
77	23.8	19.1	28.7
51	21.7	18.2	27.4

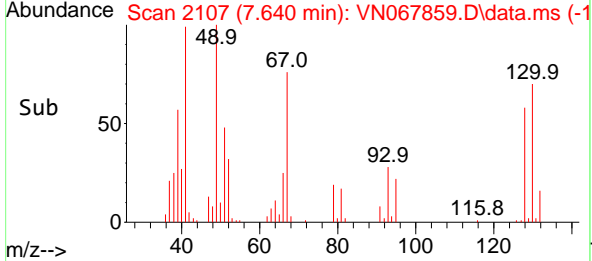
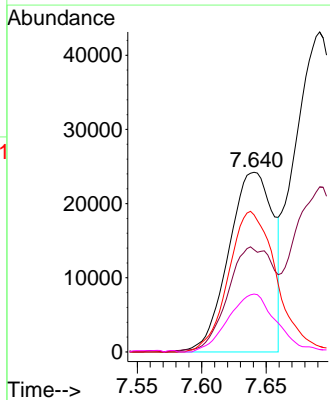


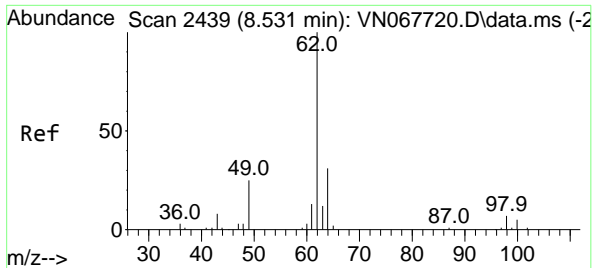
#35  
 Methacrylonitrile  
 Concen: 20.931 ug/l  
 RT: 7.640 min Scan# 2107  
 Delta R.T. -0.000 min  
 Lab File: VN067859.D  
 Acq: 22 Jul 2021 13:49



Tgt Ion: 41 Resp: 58225

Ion	Ratio	Lower	Upper
41	100		
39	56.1	29.6	88.9
67	76.4	37.4	112.2
52	32.3	16.4	49.2

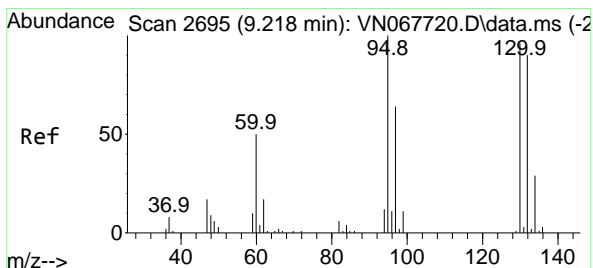
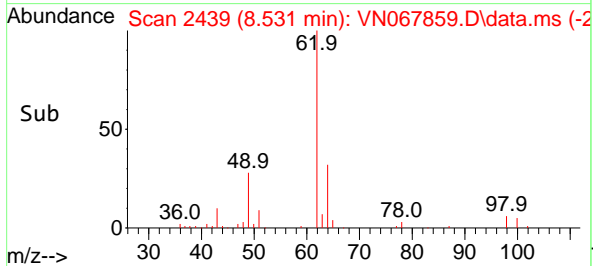
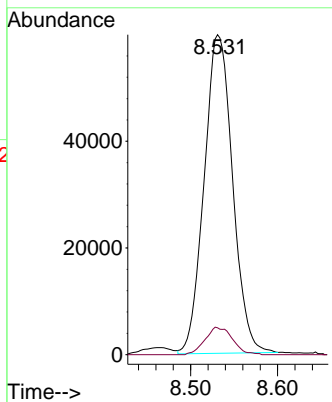
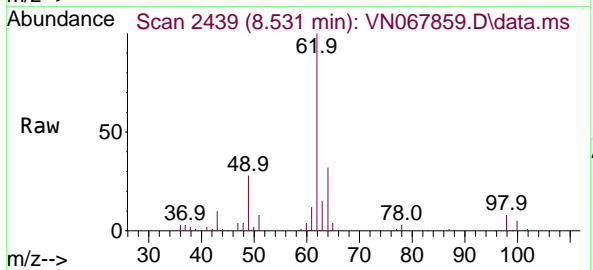




#36  
 1,2-Dichloroethane  
 Concen: 20.912 ug/l  
 RT: 8.531 min Scan# 2439  
 Delta R.T. -0.000 min  
 Lab File: VN067859.D  
 Acq: 22 Jul 2021 13:49

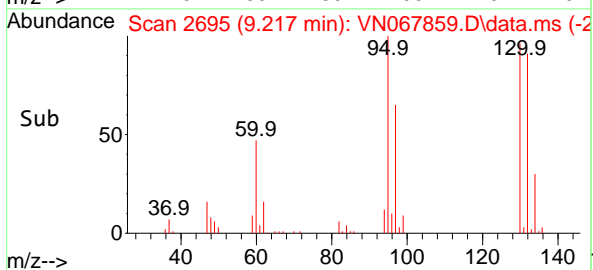
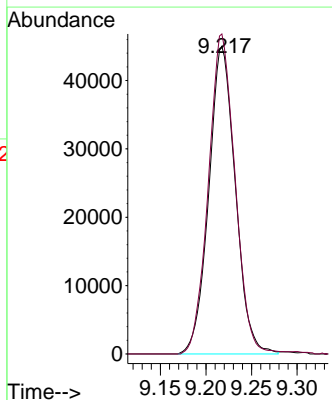
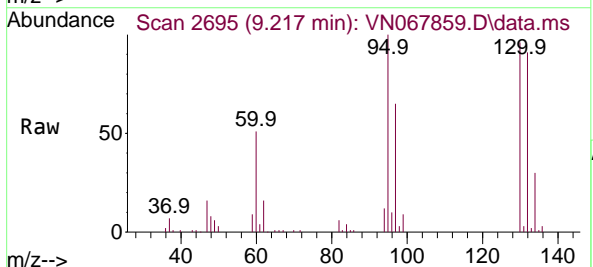
**Instrument :**  
 MSVOA\_N  
**ClientSampled :**  
 VN0722WBSD01

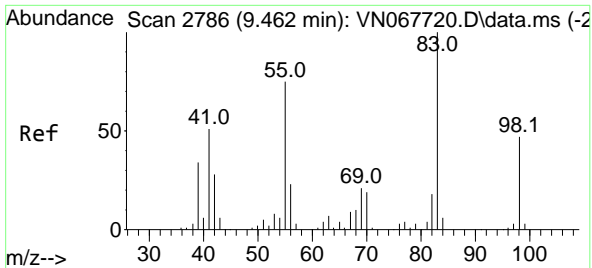
Tgt Ion: 62 Resp: 135980  
 Ion Ratio Lower Upper  
 62 100  
 98 5.2 6.2 9.2#



#37  
 Trichloroethene  
 Concen: 20.092 ug/l  
 RT: 9.217 min Scan# 2695  
 Delta R.T. -0.000 min  
 Lab File: VN067859.D  
 Acq: 22 Jul 2021 13:49

Tgt Ion:130 Resp: 91178  
 Ion Ratio Lower Upper  
 130 100  
 95 104.0 83.2 124.8

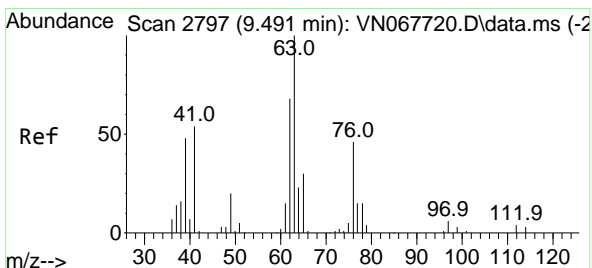
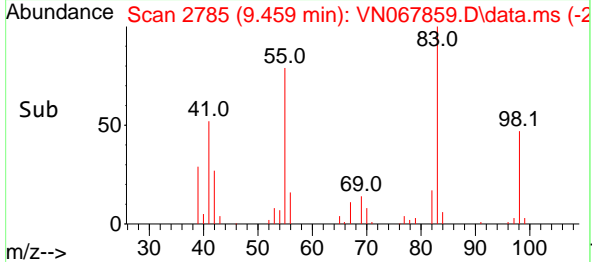
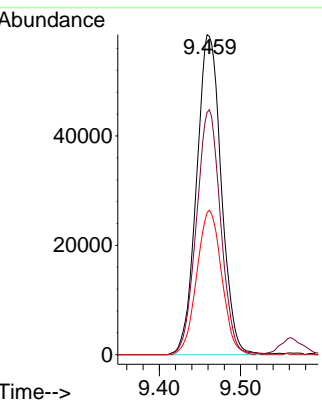
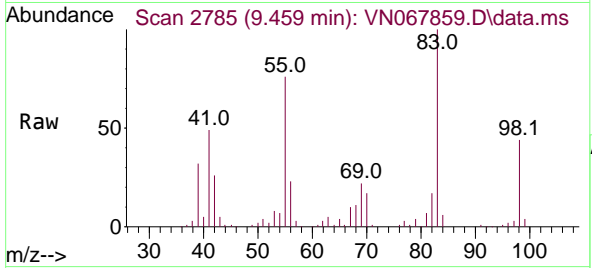




#38  
 Methylcyclohexane  
 Concen: 19.078 ug/l  
 RT: 9.459 min Scan# 2785  
 Delta R.T. -0.003 min  
 Lab File: VN067859.D  
 Acq: 22 Jul 2021 13:49

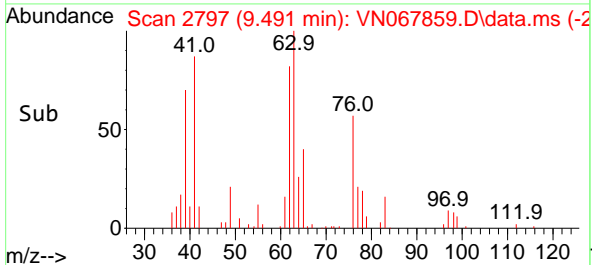
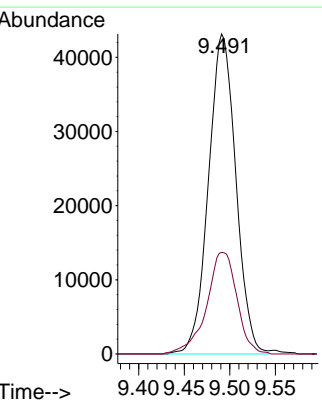
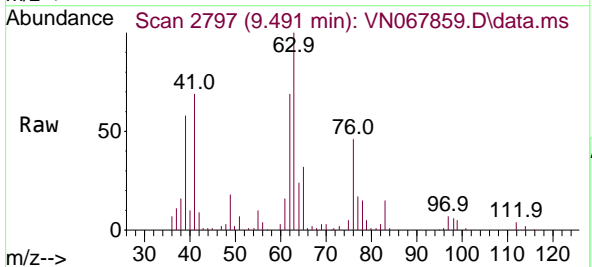
Instrument :  
 MSVOA\_N  
 ClientSampled :  
 VN0722WBSD01

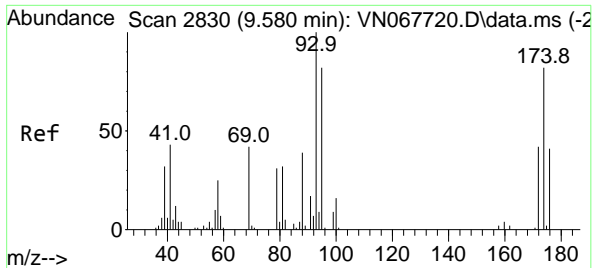
Tgt Ion	Resp	Lower	Upper
83	123479		
55	75.2	37.4	112.2
98	45.5	23.5	70.6



#39  
 1,2-Dichloropropane  
 Concen: 20.230 ug/l  
 RT: 9.491 min Scan# 2797  
 Delta R.T. -0.000 min  
 Lab File: VN067859.D  
 Acq: 22 Jul 2021 13:49

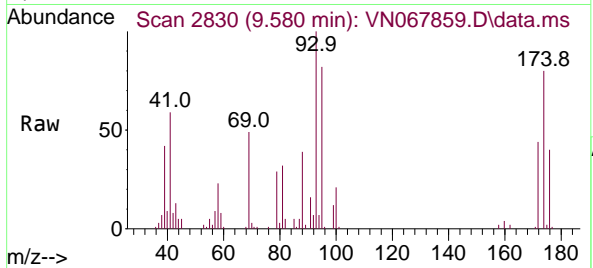
Tgt Ion	Resp	Lower	Upper
63	90113		
65	31.3	24.3	36.5





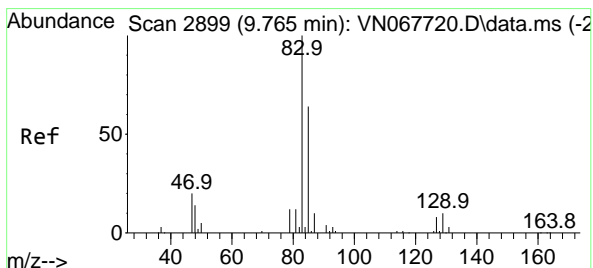
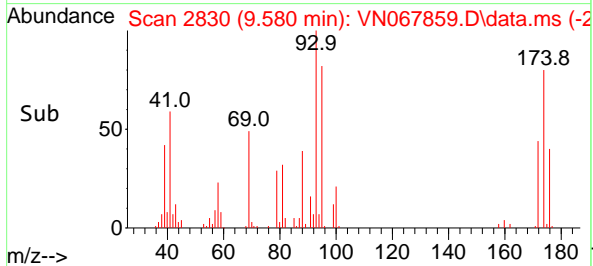
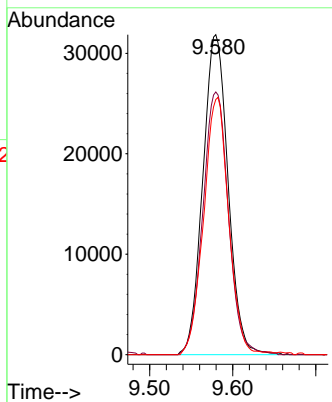
#40  
 Dibromomethane  
 Concen: 20.984 ug/l  
 RT: 9.580 min Scan# 2830  
 Delta R.T. -0.000 min  
 Lab File: VN067859.D  
 Acq: 22 Jul 2021 13:49

Instrument :  
 MSVOA\_N  
 ClientSampled :  
 VN0722WBSD01

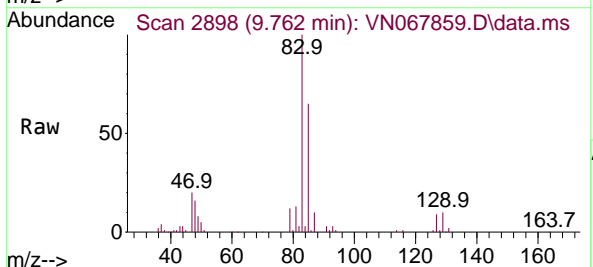


Tgt Ion: 93 Resp: 67217

Ion	Ratio	Lower	Upper
93	100		
95	83.0	0.0	165.4
174	79.4	0.0	163.0

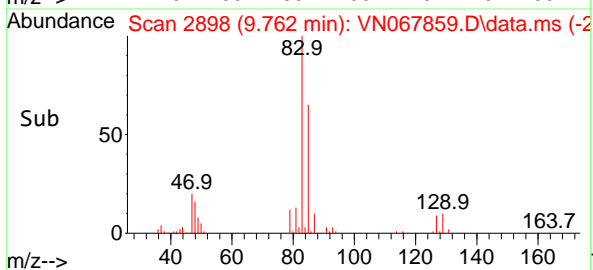
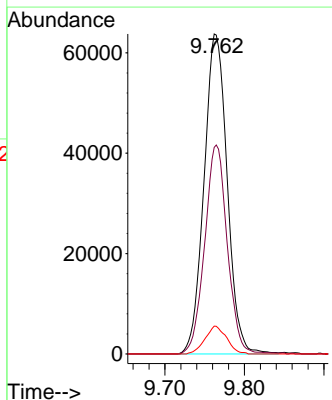


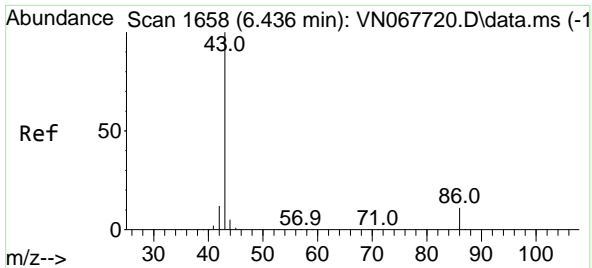
#41  
 Bromodichloromethane  
 Concen: 20.556 ug/l  
 RT: 9.762 min Scan# 2898  
 Delta R.T. -0.003 min  
 Lab File: VN067859.D  
 Acq: 22 Jul 2021 13:49



Tgt Ion: 83 Resp: 129253

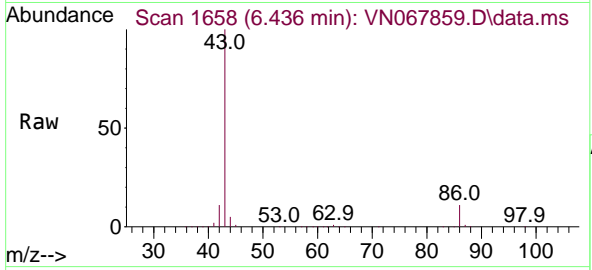
Ion	Ratio	Lower	Upper
83	100		
85	64.6	51.3	76.9
127	8.7	6.6	10.0



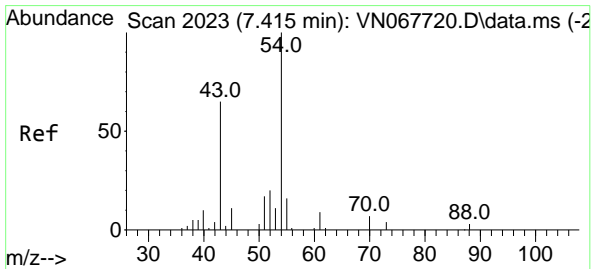
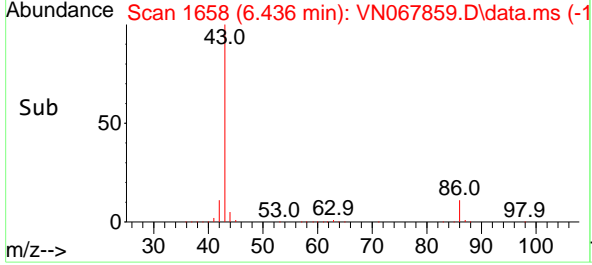
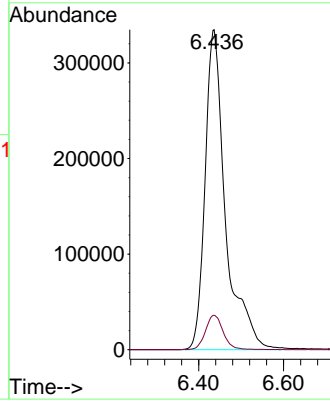


#42  
 Vinyl Acetate  
 Concen: 103.859 ug/l  
 RT: 6.436 min Scan# 1658  
 Delta R.T. -0.000 min  
 Lab File: VN067859.D  
 Acq: 22 Jul 2021 13:49

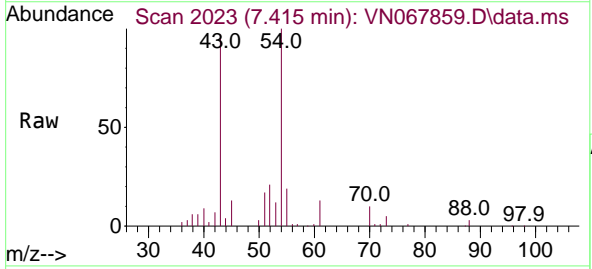
Instrument :  
 MSVOA\_N  
 ClientSampled :  
 VN0722WBSD01



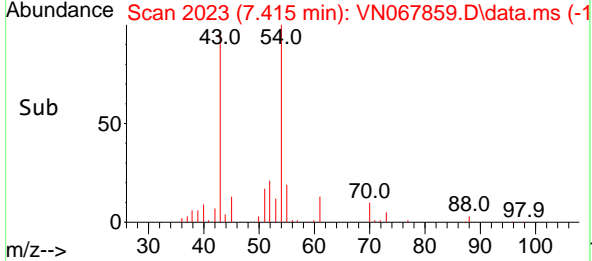
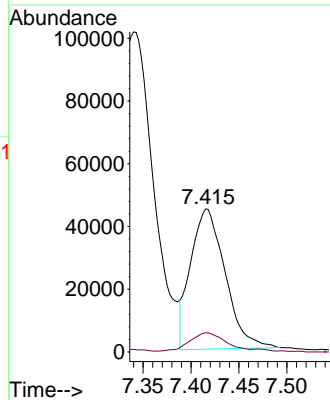
Tgt Ion: 43 Resp: 1118115  
 Ion Ratio Lower Upper  
 43 100  
 86 9.3 8.2 12.2



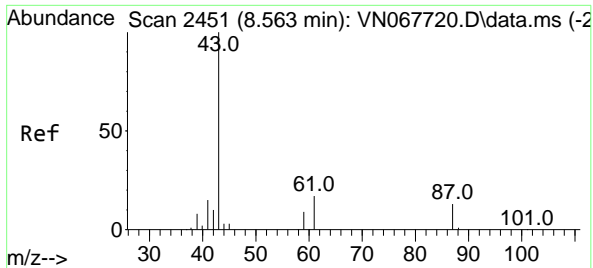
#43  
 Ethyl Acetate  
 Concen: 20.495 ug/l  
 RT: 7.415 min Scan# 2023  
 Delta R.T. -0.000 min  
 Lab File: VN067859.D  
 Acq: 22 Jul 2021 13:49



Tgt Ion: 43 Resp: 112126  
 Ion Ratio Lower Upper  
 43 100  
 45 13.3 10.5 15.7



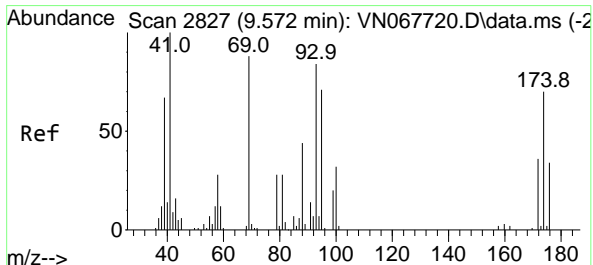
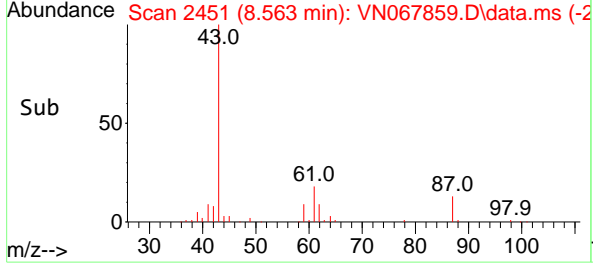
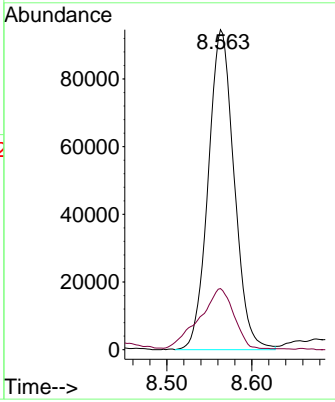
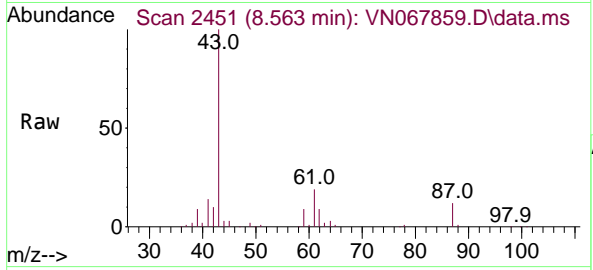




#44  
 Isopropyl Acetate  
 Concen: 20.188 ug/l  
 RT: 8.563 min Scan# 2451  
 Delta R.T. -0.000 min  
 Lab File: VN067859.D  
 Acq: 22 Jul 2021 13:49

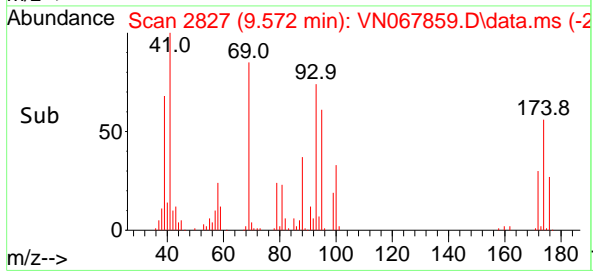
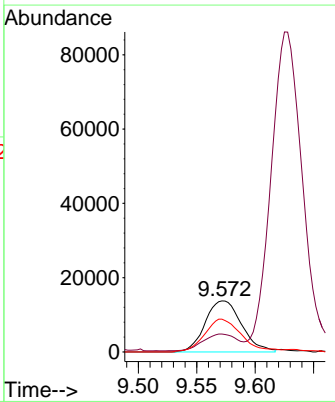
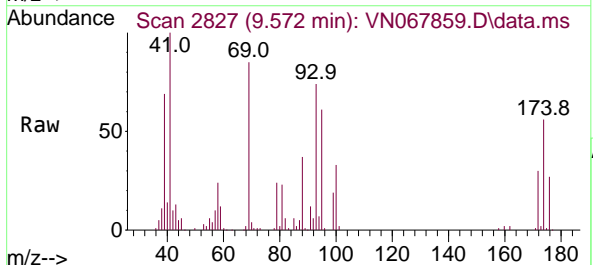
**Instrument :**  
 MSVOA\_N  
**ClientSampled :**  
 VN0722WBSD01

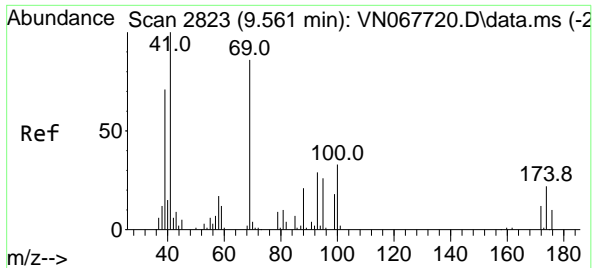
Tgt Ion: 43 Resp: 200536  
 Ion Ratio Lower Upper  
 43 100  
 61 24.8 20.4 30.6



#45  
 1,4-Dioxane  
 Concen: 397.082 ug/l  
 RT: 9.572 min Scan# 2827  
 Delta R.T. -0.000 min  
 Lab File: VN067859.D  
 Acq: 22 Jul 2021 13:49

Tgt Ion: 88 Resp: 29870  
 Ion Ratio Lower Upper  
 88 100  
 43 31.0 26.9 40.3  
 58 64.9 52.2 78.4

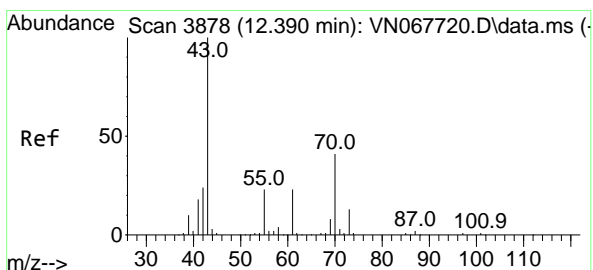
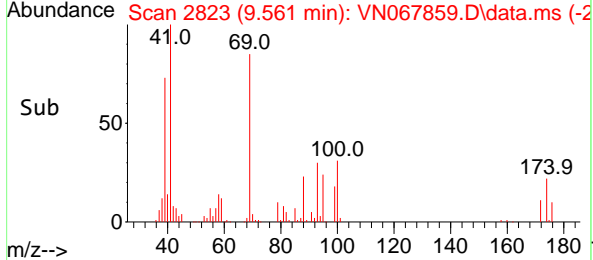
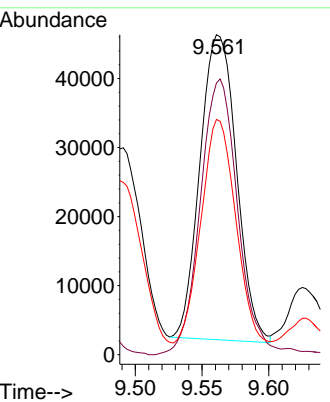
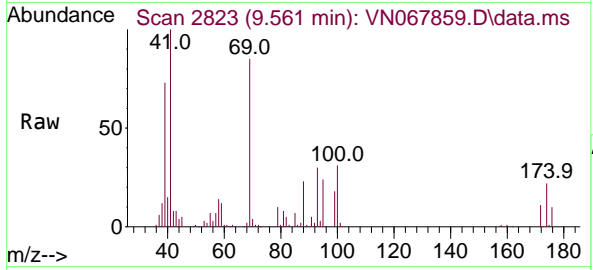




#46  
 Methyl methacrylate  
 Concen: 19.587 ug/l  
 RT: 9.561 min Scan# 2823  
 Delta R.T. -0.000 min  
 Lab File: VN067859.D  
 Acq: 22 Jul 2021 13:49

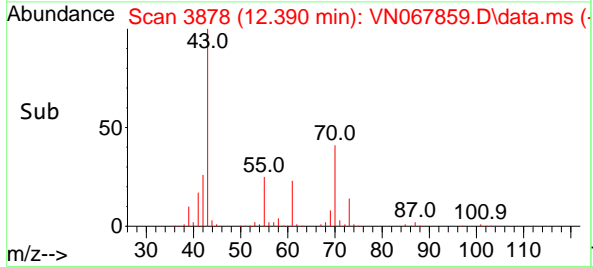
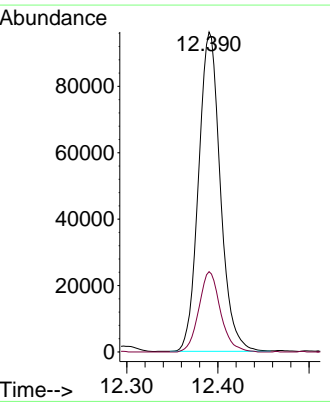
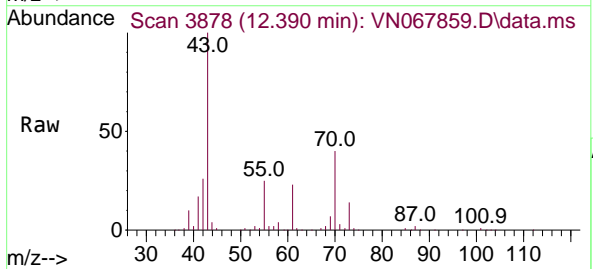
Instrument :  
 MSVOA\_N  
 ClientSampled :  
 VN0722WBSD01

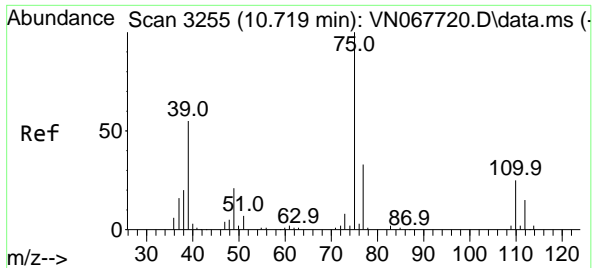
Tgt Ion	Resp	Lower	Upper
41	100		
69	88.3	43.0	128.8
39	73.7	35.5	106.7



#47  
 n-amy1 Acetate  
 Concen: 19.542 ug/l  
 RT: 12.390 min Scan# 3878  
 Delta R.T. -0.000 min  
 Lab File: VN067859.D  
 Acq: 22 Jul 2021 13:49

Tgt Ion	Resp	Lower	Upper
43	100		
55	25.0	19.0	28.6

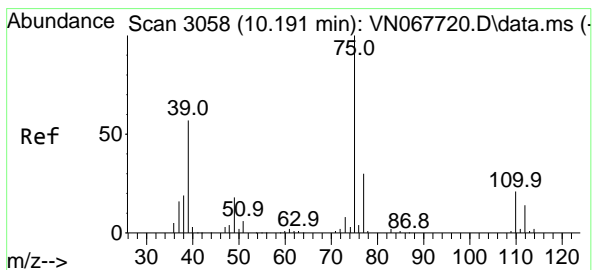
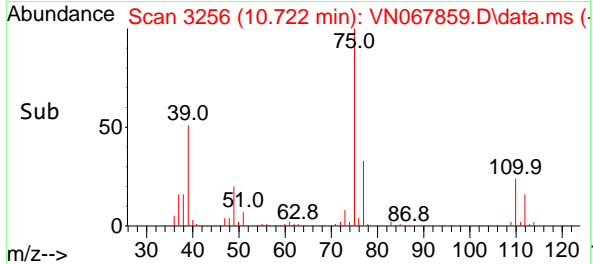
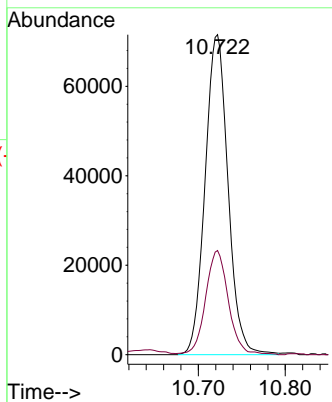
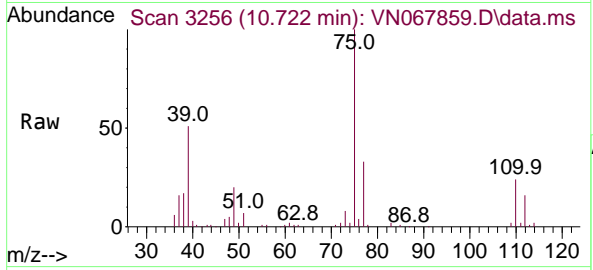




#48  
 t-1,3-Dichloropropene  
 Concen: 19.331 ug/l  
 RT: 10.722 min Scan# 3256  
 Delta R.T. 0.003 min  
 Lab File: VN067859.D  
 Acq: 22 Jul 2021 13:49

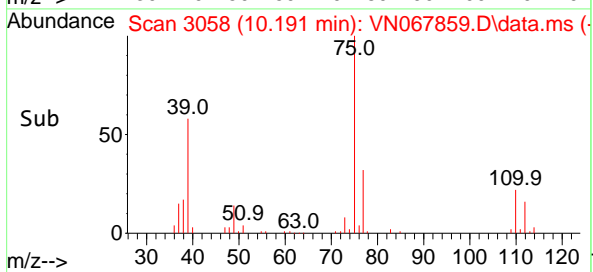
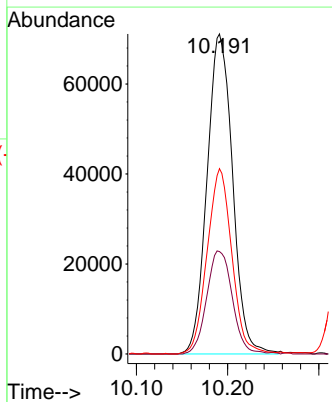
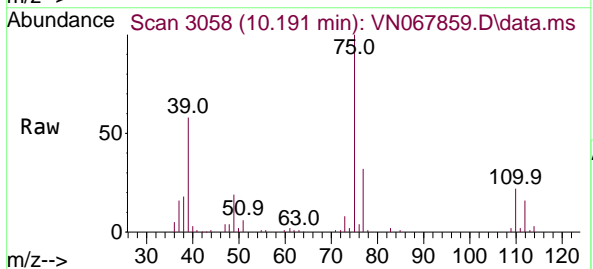
**Instrument :**  
 MSVOA\_N  
**ClientSampled :**  
 VN0722WBSD01

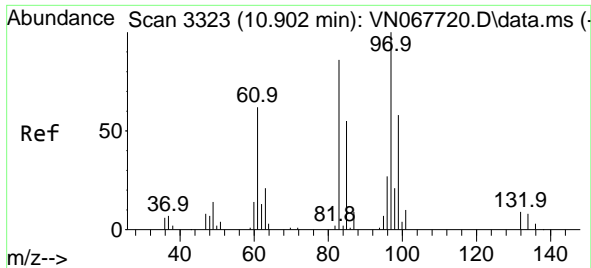
Tgt Ion: 75 Resp: 130990  
 Ion Ratio Lower Upper  
 75 100  
 77 32.5 27.0 40.4



#49  
 cis-1,3-Dichloropropene  
 Concen: 19.237 ug/l  
 RT: 10.191 min Scan# 3058  
 Delta R.T. -0.000 min  
 Lab File: VN067859.D  
 Acq: 22 Jul 2021 13:49

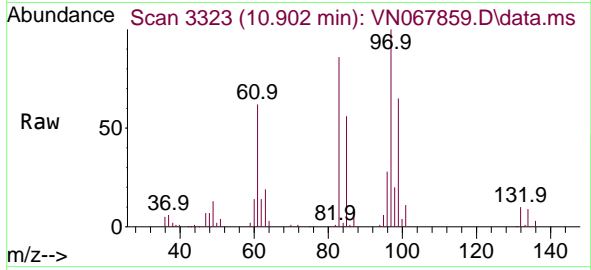
Tgt Ion: 75 Resp: 138365  
 Ion Ratio Lower Upper  
 75 100  
 77 32.0 23.8 35.6  
 39 57.9 45.3 67.9





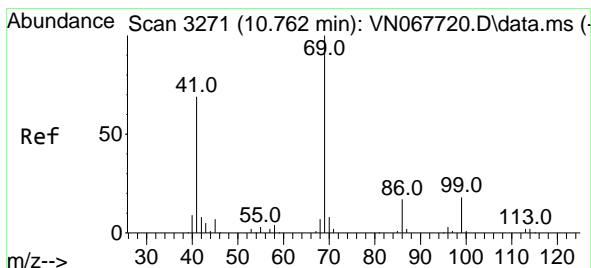
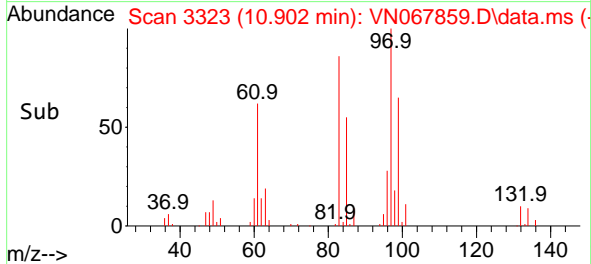
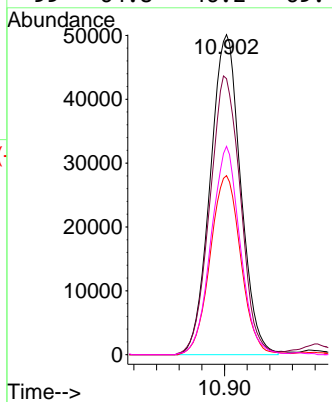
#50  
 1,1,2-Trichloroethane  
 Concen: 20.427 ug/l  
 RT: 10.902 min Scan# 3323  
 Delta R.T. -0.000 min  
 Lab File: VN067859.D  
 Acq: 22 Jul 2021 13:49

**Instrument :**  
 MSVOA\_N  
**ClientSampled :**  
 VN0722WBSD01

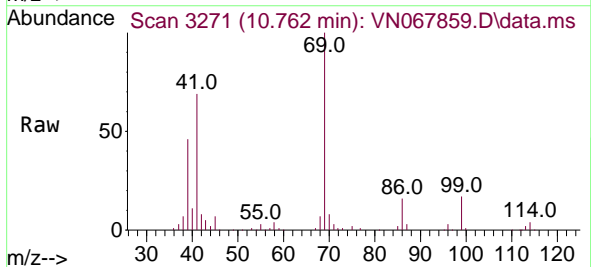


Tgt Ion: 97 Resp: 93377

Ion	Ratio	Lower	Upper
97	100		
83	85.8	69.0	103.4
85	55.9	43.8	65.8
99	64.8	46.2	69.4

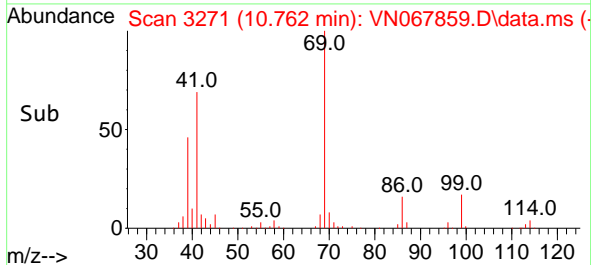
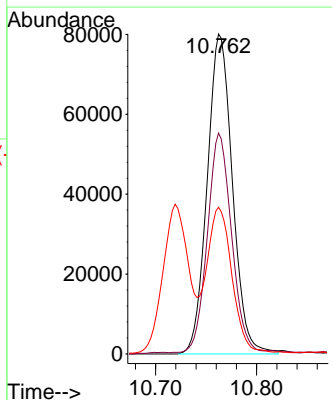


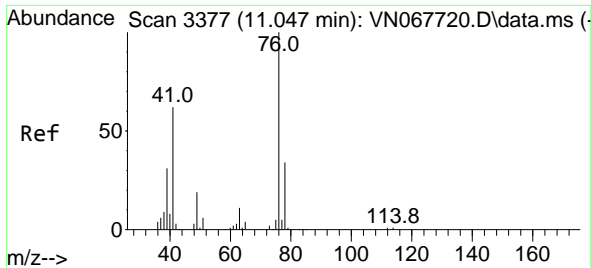
#51  
 Ethyl methacrylate  
 Concen: 19.598 ug/l  
 RT: 10.762 min Scan# 3271  
 Delta R.T. -0.000 min  
 Lab File: VN067859.D  
 Acq: 22 Jul 2021 13:49



Tgt Ion: 69 Resp: 139313

Ion	Ratio	Lower	Upper
69	100		
41	68.5	34.3	102.9
39	45.2	23.7	71.1

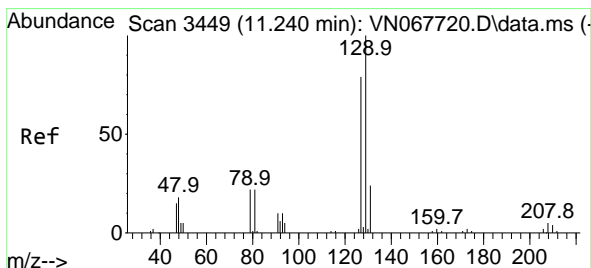
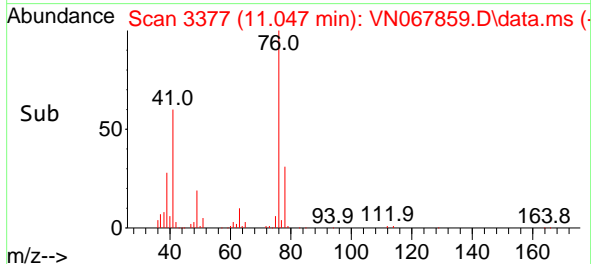
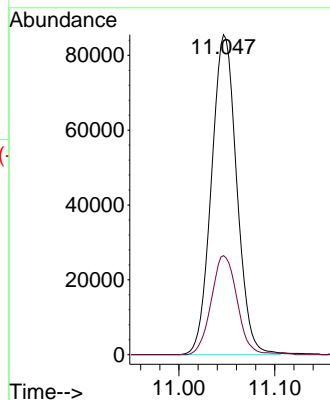
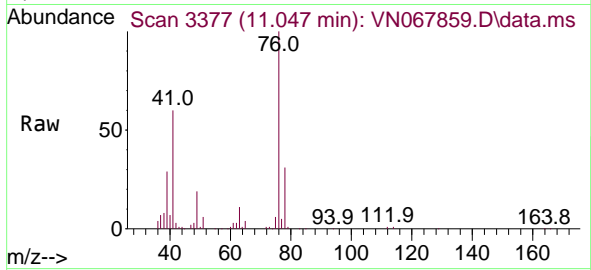




#52  
 1,3-Dichloropropane  
 Concen: 20.706 ug/l  
 RT: 11.047 min Scan# 3377  
 Delta R.T. -0.000 min  
 Lab File: VN067859.D  
 Acq: 22 Jul 2021 13:49

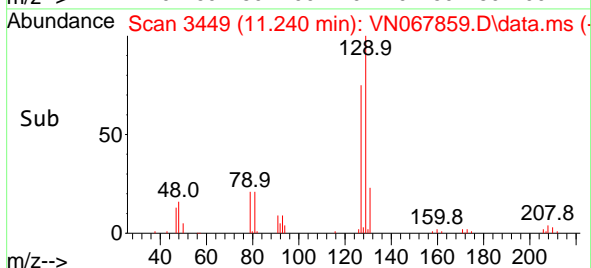
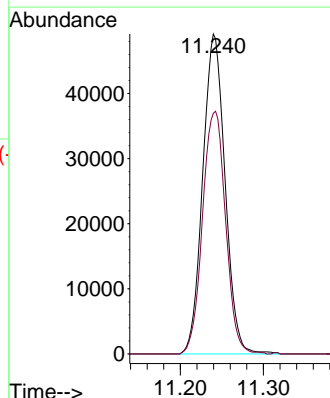
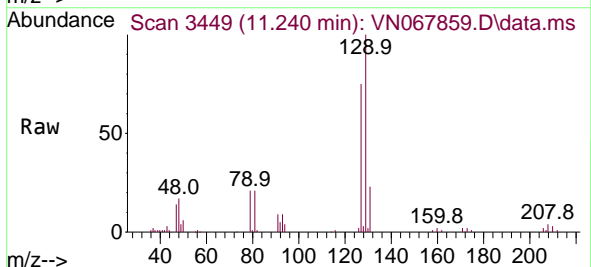
Instrument :  
 MSVOA\_N  
 ClientSampled :  
 VN0722WBSD01

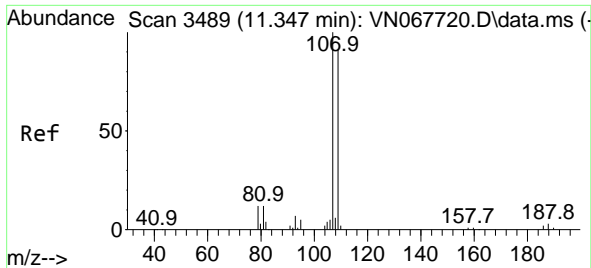
Tgt Ion: 76 Resp: 156503  
 Ion Ratio Lower Upper  
 76 100  
 78 31.9 0.0 67.0



#53  
 Dibromochloromethane  
 Concen: 19.158 ug/l  
 RT: 11.240 min Scan# 3449  
 Delta R.T. -0.000 min  
 Lab File: VN067859.D  
 Acq: 22 Jul 2021 13:49

Tgt Ion:129 Resp: 91672  
 Ion Ratio Lower Upper  
 129 100  
 127 78.2 39.6 118.8

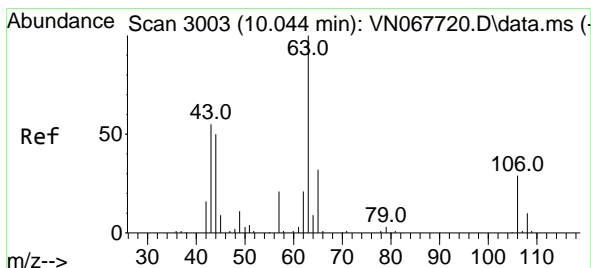
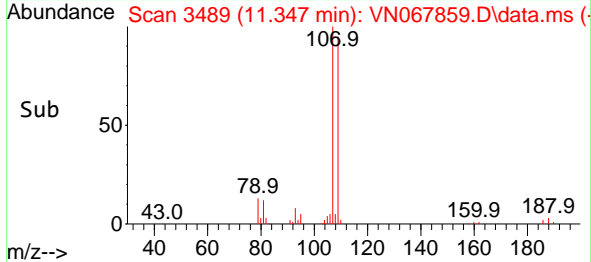
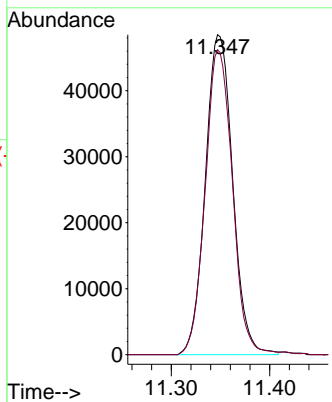
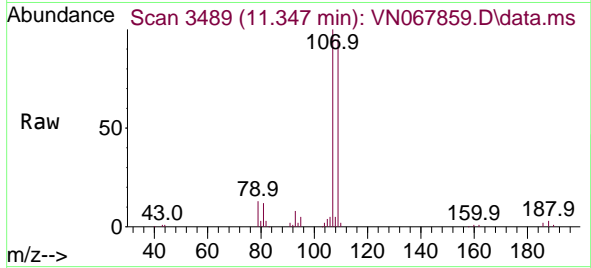




#54  
 1,2-Dibromoethane  
 Concen: 19.912 ug/l  
 RT: 11.347 min Scan# 3489  
 Delta R.T. -0.000 min  
 Lab File: VN067859.D  
 Acq: 22 Jul 2021 13:49

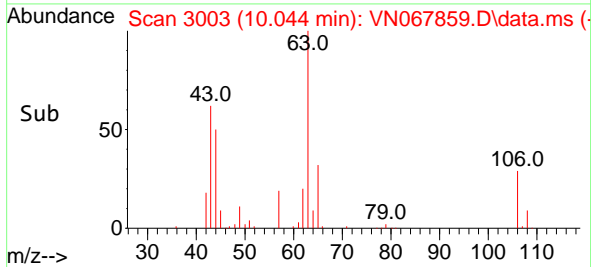
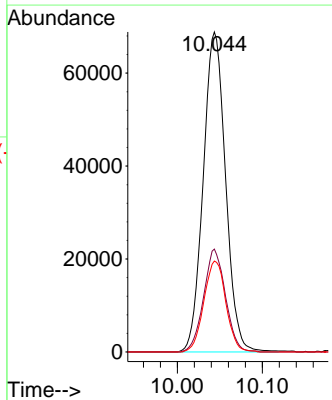
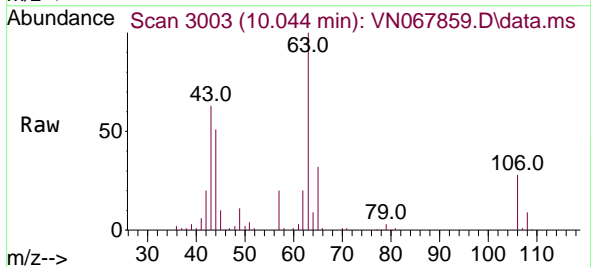
Instrument :  
 MSVOA\_N  
 ClientSampled :  
 VN0722WBSD01

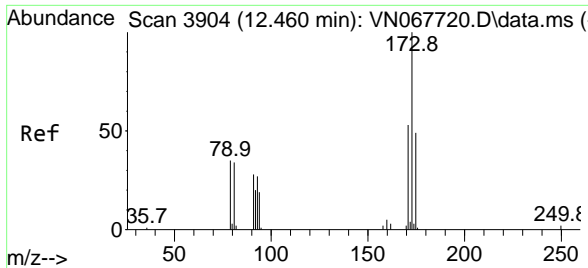
Tgt Ion:107 Resp: 93892  
 Ion Ratio Lower Upper  
 107 100  
 109 94.6 74.6 111.8



#55  
 2-Chloroethyl vinyl ether  
 Concen: 91.660 ug/l  
 RT: 10.044 min Scan# 3003  
 Delta R.T. -0.000 min  
 Lab File: VN067859.D  
 Acq: 22 Jul 2021 13:49

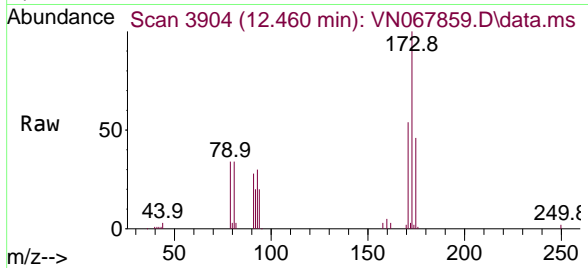
Tgt Ion: 63 Resp: 126019  
 Ion Ratio Lower Upper  
 63 100  
 65 31.4 25.5 38.3  
 106 27.9 22.1 33.1



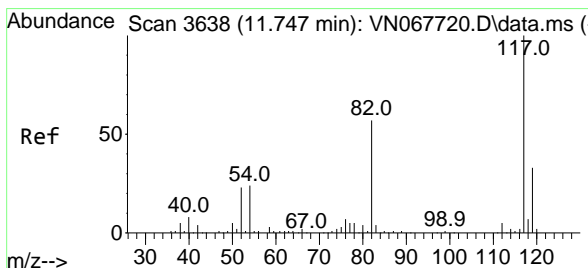
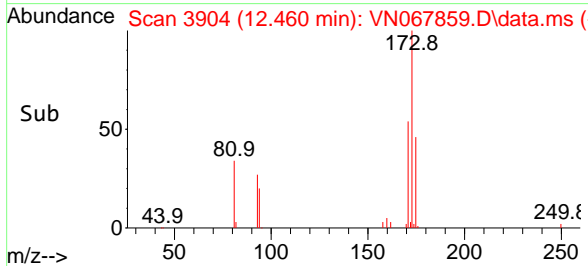
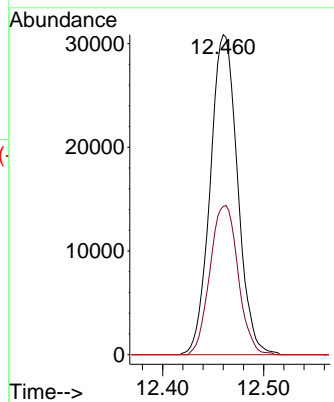


#56  
 Bromoform  
 Concen: 17.307 ug/l  
 RT: 12.460 min Scan# 3904  
 Delta R.T. -0.000 min  
 Lab File: VN067859.D  
 Acq: 22 Jul 2021 13:49

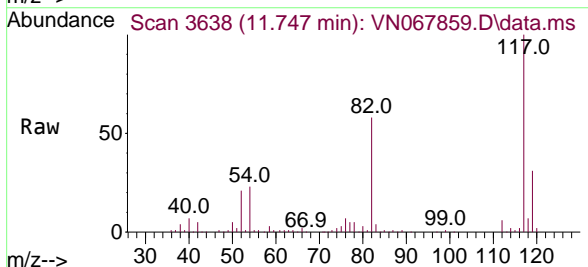
Instrument :  
 MSVOA\_N  
 ClientSampled :  
 VN0722WBSD01



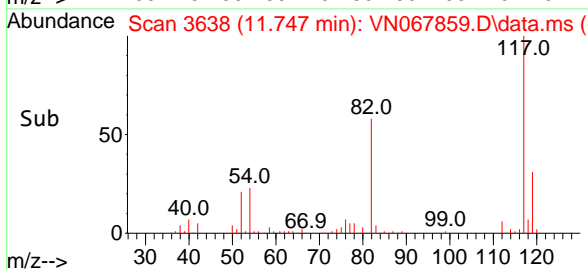
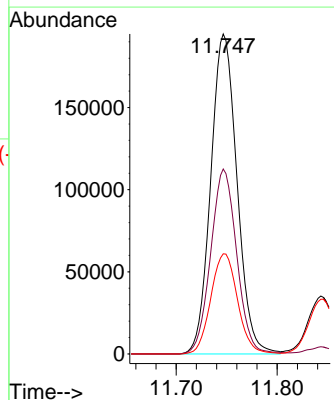
Tgt Ion	Resp	Lower	Upper
173	58024		
173	100		
175	47.9	38.5	57.7
254	0.0	0.0	0.0

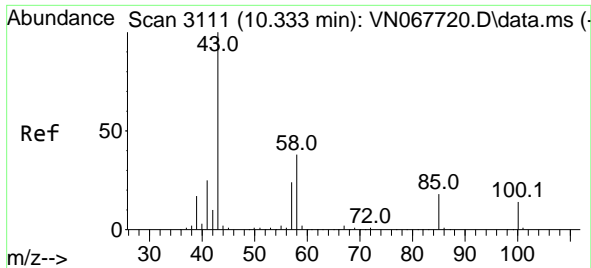


#57  
 Chlorobenzene-d5  
 Concen: 30.000 ug/l  
 RT: 11.747 min Scan# 3638  
 Delta R.T. -0.000 min  
 Lab File: VN067859.D  
 Acq: 22 Jul 2021 13:49



Tgt Ion	Resp	Lower	Upper
117	351643		
117	100		
82	57.4	45.4	68.0
119	32.0	25.7	38.5

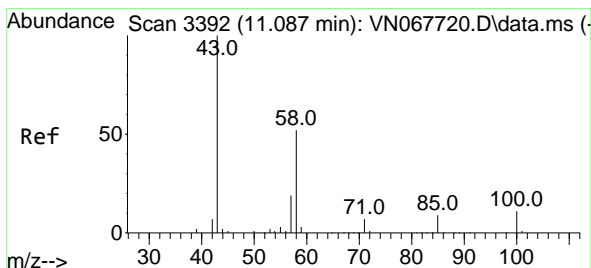
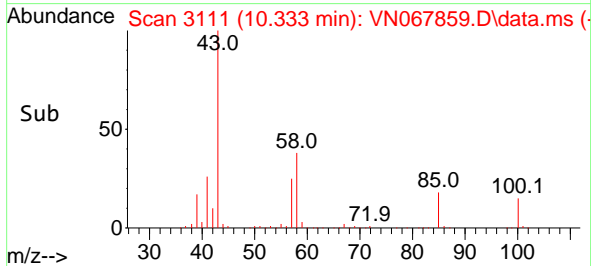
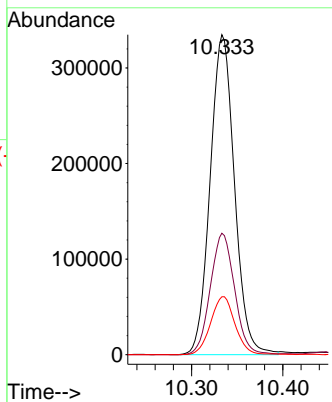
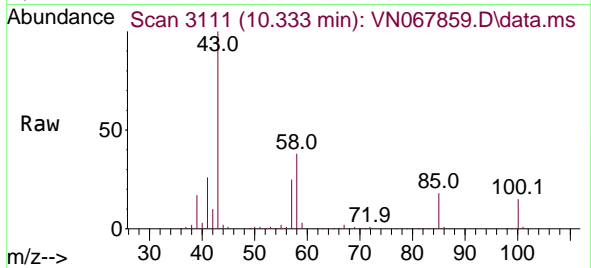




#58  
 4-Methyl-2-Pentanone  
 Concen: 102.917 ug/l  
 RT: 10.333 min Scan# 3111  
 Delta R.T. -0.000 min  
 Lab File: VN067859.D  
 Acq: 22 Jul 2021 13:49

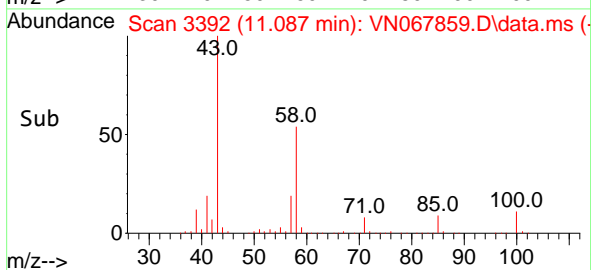
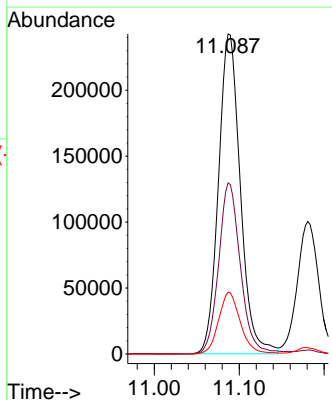
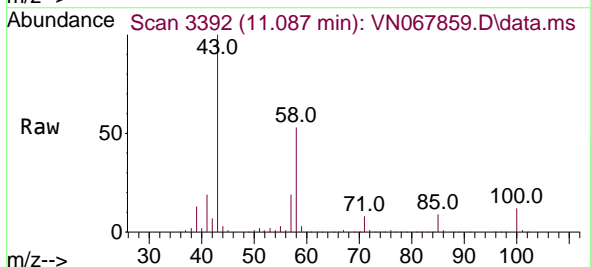
**Instrument :**  
 MSVOA\_N  
**ClientSampled :**  
 VN0722WBSD01

Tgt Ion	Resp	Lower	Upper
43	100		
58	37.9	29.9	44.9
85	18.2	14.1	21.1

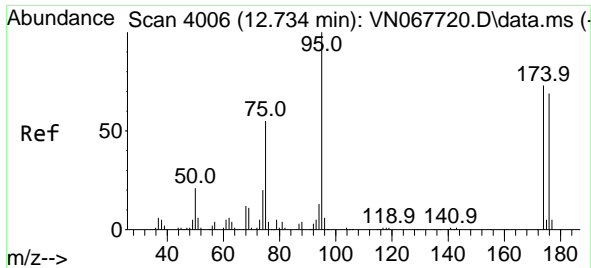


#59  
 2-Hexanone  
 Concen: 102.500 ug/l  
 RT: 11.087 min Scan# 3392  
 Delta R.T. -0.000 min  
 Lab File: VN067859.D  
 Acq: 22 Jul 2021 13:49

Tgt Ion	Resp	Lower	Upper
43	100		
58	52.9	41.5	62.3
57	19.3	15.1	22.7

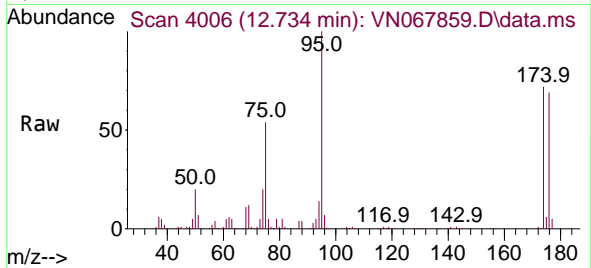




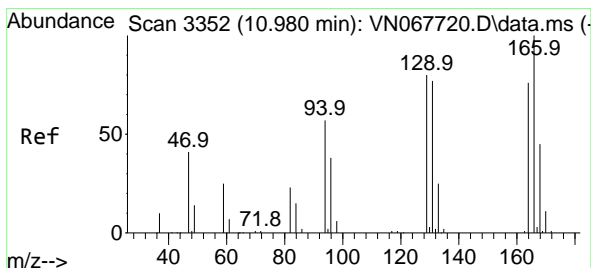
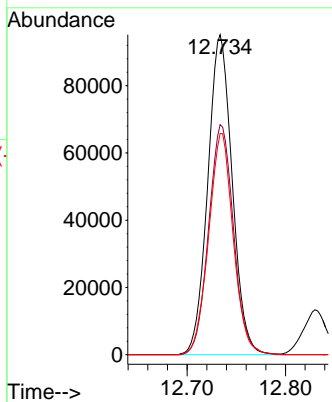
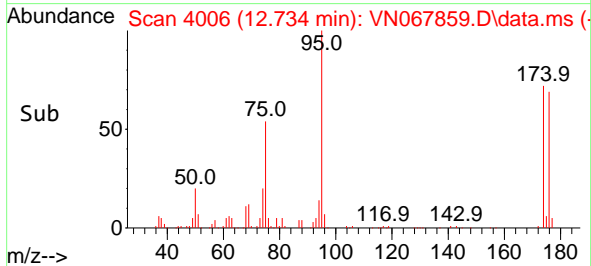


#60  
 4-Bromofluorobenzene  
 Concen: 28.806 ug/l  
 RT: 12.734 min Scan# 4006  
 Delta R.T. -0.000 min  
 Lab File: VN067859.D  
 Acq: 22 Jul 2021 13:49

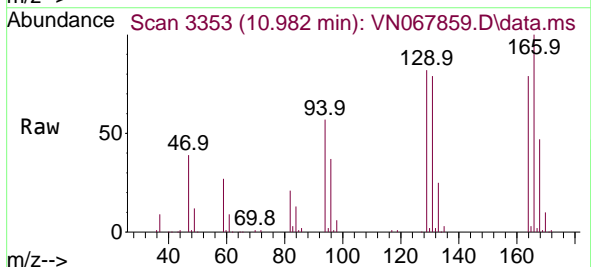
Instrument :  
 MSVOA\_N  
 ClientSampled :  
 VN0722WBSD01



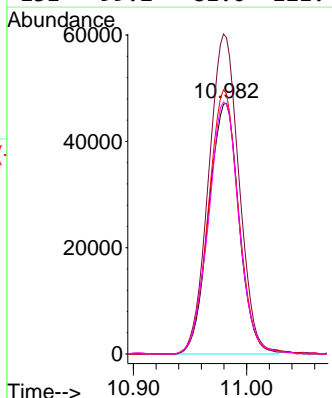
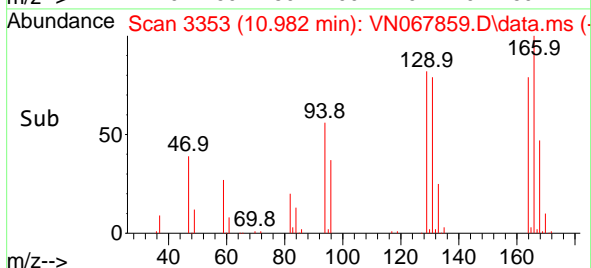
Tgt Ion: 95 Resp: 164502  
 Ion Ratio Lower Upper  
 95 100  
 174 73.3 57.1 85.7  
 176 69.6 54.6 81.8

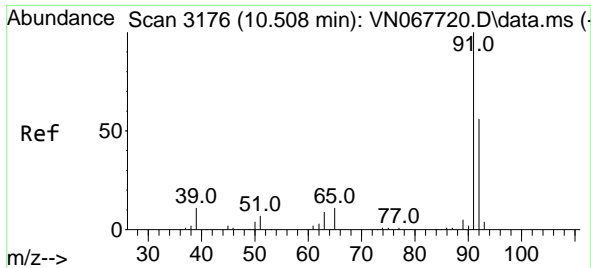


#61  
 Tetrachloroethene  
 Concen: 20.310 ug/l  
 RT: 10.982 min Scan# 3353  
 Delta R.T. 0.003 min  
 Lab File: VN067859.D  
 Acq: 22 Jul 2021 13:49



Tgt Ion: 164 Resp: 87731  
 Ion Ratio Lower Upper  
 164 100  
 166 125.8 105.5 158.3  
 129 103.4 84.5 126.7  
 131 99.2 81.0 121.4

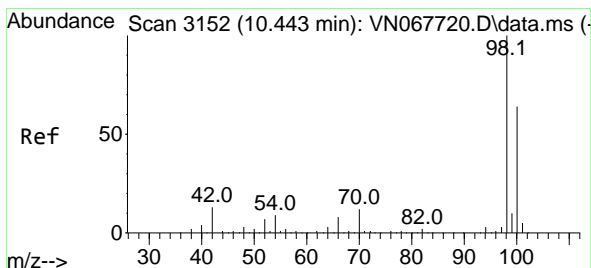
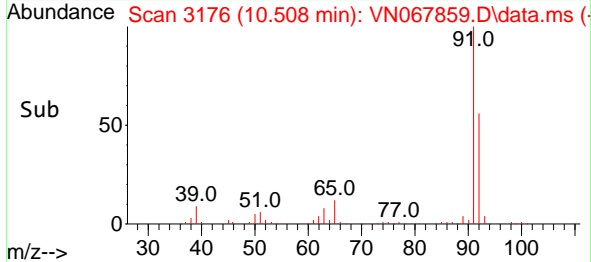
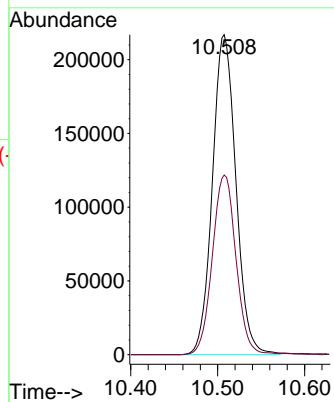
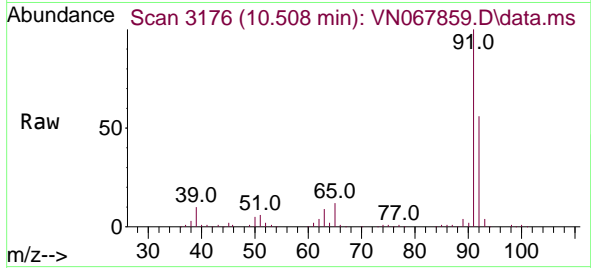




#62  
 Toluene  
 Concen: 19.709 ug/l  
 RT: 10.508 min Scan# 3176  
 Delta R.T. -0.000 min  
 Lab File: VN067859.D  
 Acq: 22 Jul 2021 13:49

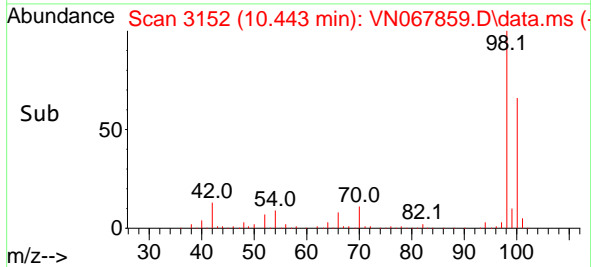
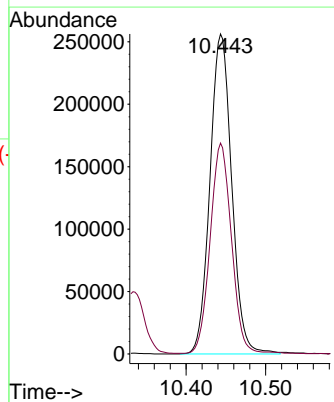
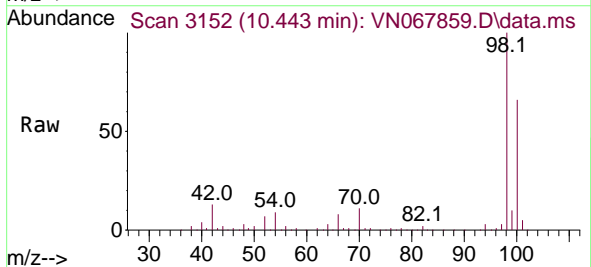
Instrument :  
 MSVOA\_N  
 ClientSampled :  
 VN0722WBSD01

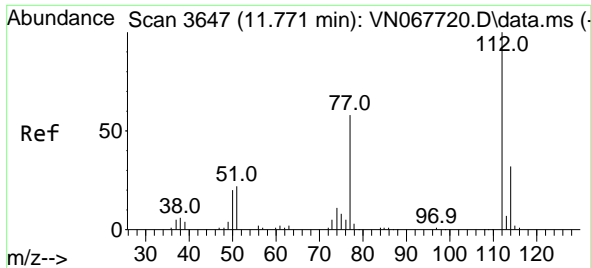
Tgt Ion: 91 Resp: 407637  
 Ion Ratio Lower Upper  
 91 100  
 92 56.5 44.8 67.2



#63  
 Toluene-d8  
 Concen: 30.094 ug/l  
 RT: 10.443 min Scan# 3152  
 Delta R.T. -0.000 min  
 Lab File: VN067859.D  
 Acq: 22 Jul 2021 13:49

Tgt Ion: 98 Resp: 486730  
 Ion Ratio Lower Upper  
 98 100  
 100 63.8 51.0 76.4

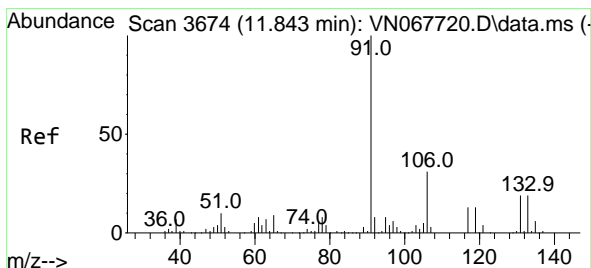
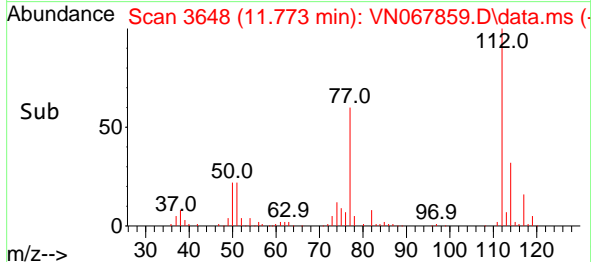
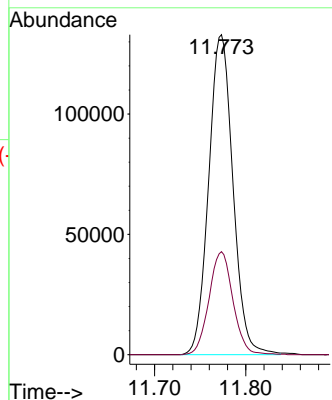
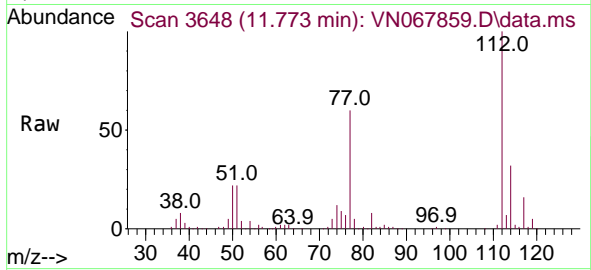




#64  
 Chlorobenzene  
 Concen: 19.829 ug/l  
 RT: 11.773 min Scan# 3648  
 Delta R.T. 0.003 min  
 Lab File: VN067859.D  
 Acq: 22 Jul 2021 13:49

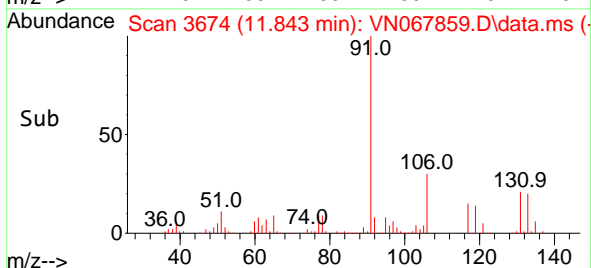
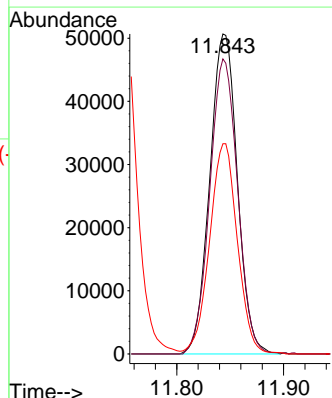
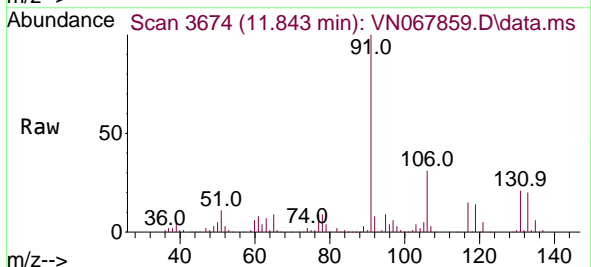
Instrument :  
 MSVOA\_N  
 ClientSampleId :  
 VN0722WBSD01

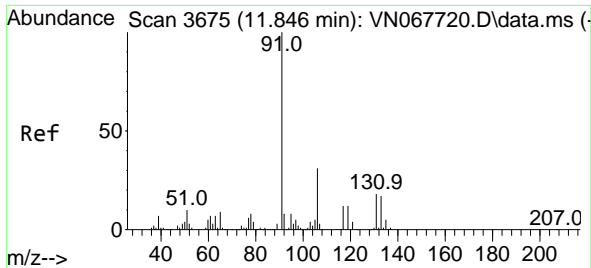
Tgt Ion:112 Resp: 245636  
 Ion Ratio Lower Upper  
 112 100  
 114 32.2 25.2 37.8



#65  
 1,1,1,2-Tetrachloroethane  
 Concen: 19.936 ug/l  
 RT: 11.843 min Scan# 3674  
 Delta R.T. -0.000 min  
 Lab File: VN067859.D  
 Acq: 22 Jul 2021 13:49

Tgt Ion:131 Resp: 90982  
 Ion Ratio Lower Upper  
 131 100  
 133 93.1 0.0 192.6  
 119 66.2 0.0 133.8

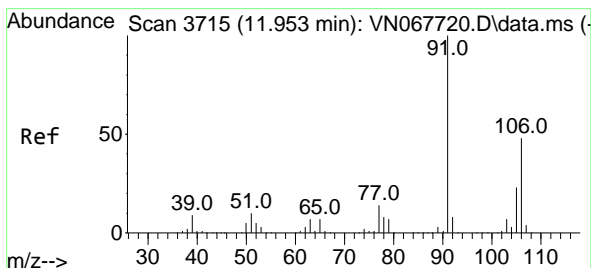
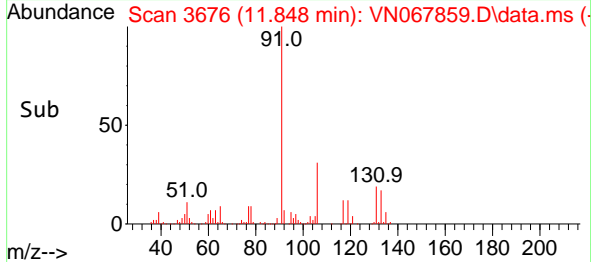
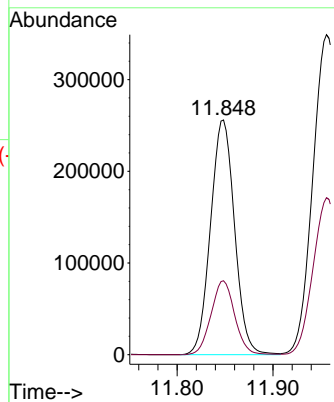
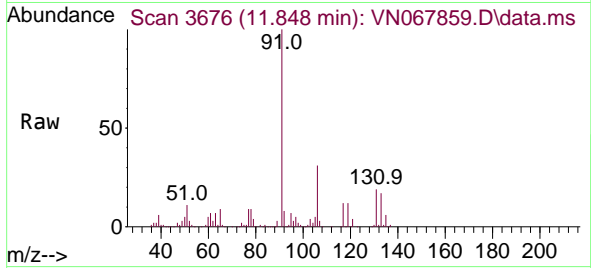




#66  
 Ethyl Benzene  
 Concen: 19.483 ug/l  
 RT: 11.848 min Scan# 3676  
 Delta R.T. 0.003 min  
 Lab File: VN067859.D  
 Acq: 22 Jul 2021 13:49

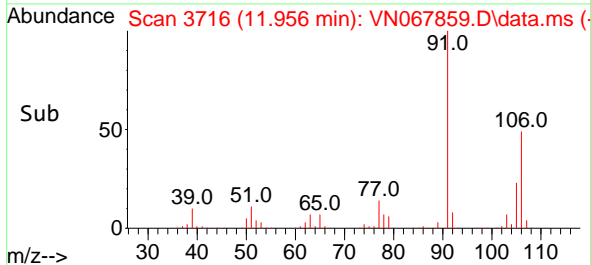
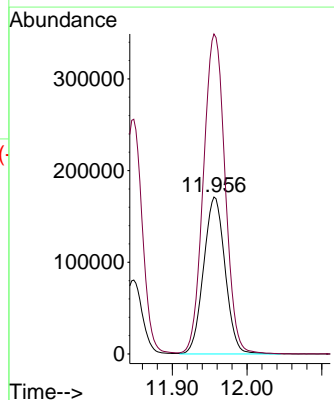
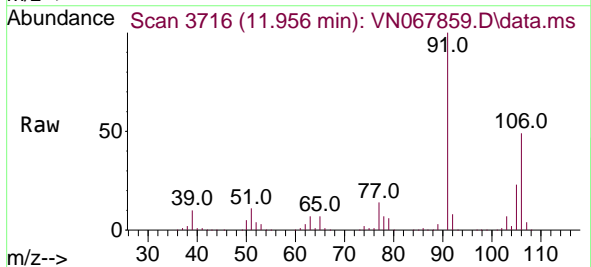
Instrument :  
 MSVOA\_N  
 ClientSampleId :  
 VN0722WBSD01

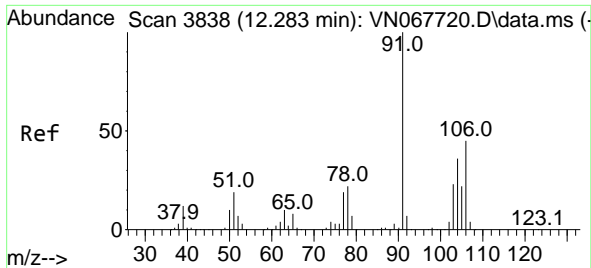
Tgt Ion: 91 Resp: 445906  
 Ion Ratio Lower Upper  
 91 100  
 106 31.5 24.6 37.0



#67  
 m/p-Xylenes  
 Concen: 39.233 ug/l  
 RT: 11.956 min Scan# 3716  
 Delta R.T. 0.003 min  
 Lab File: VN067859.D  
 Acq: 22 Jul 2021 13:49

Tgt Ion:106 Resp: 342495  
 Ion Ratio Lower Upper  
 106 100  
 91 206.3 166.6 250.0

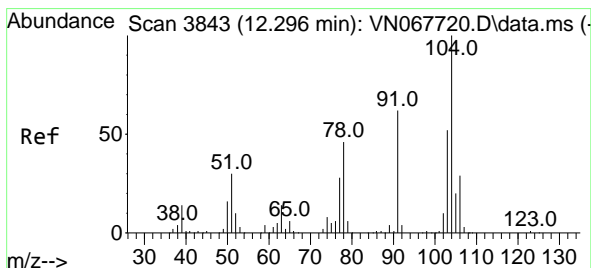
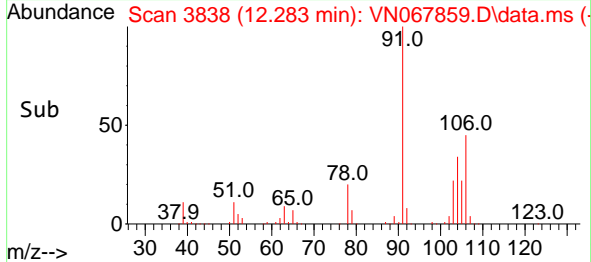
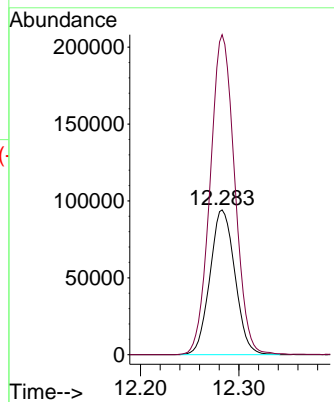
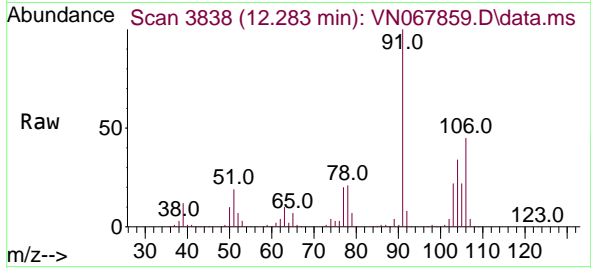




#68  
 o-Xylene  
 Concen: 19.293 ug/l  
 RT: 12.283 min Scan# 3838  
 Delta R.T. -0.000 min  
 Lab File: VN067859.D  
 Acq: 22 Jul 2021 13:49

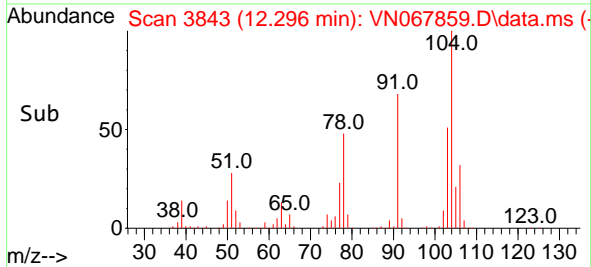
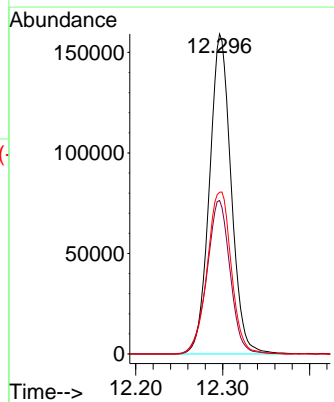
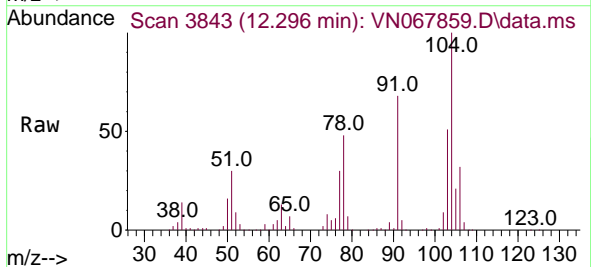
Instrument :  
 MSVOA\_N  
 ClientSampled :  
 VN0722WBSD01

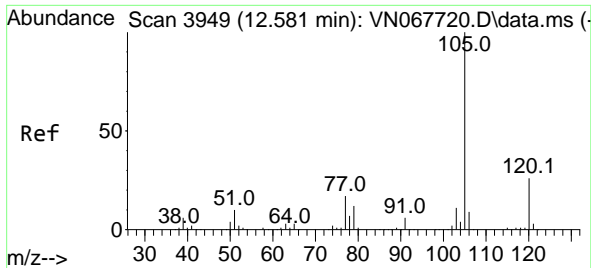
Tgt Ion:106 Resp: 166253  
 Ion Ratio Lower Upper  
 106 100  
 91 217.2 109.6 328.8



#69  
 Styrene  
 Concen: 19.360 ug/l  
 RT: 12.296 min Scan# 3843  
 Delta R.T. -0.000 min  
 Lab File: VN067859.D  
 Acq: 22 Jul 2021 13:49

Tgt Ion:104 Resp: 275887  
 Ion Ratio Lower Upper  
 104 100  
 78 51.3 40.8 61.2  
 103 56.4 44.9 67.3

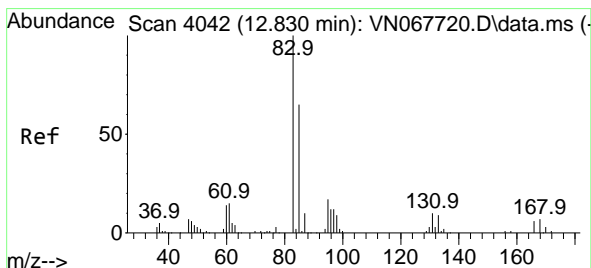
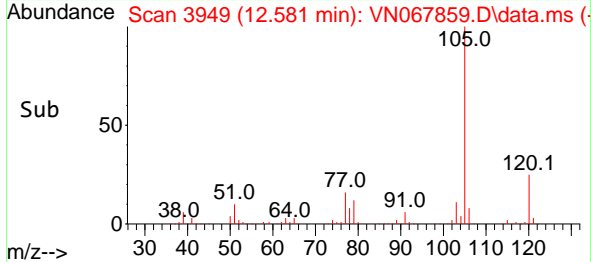
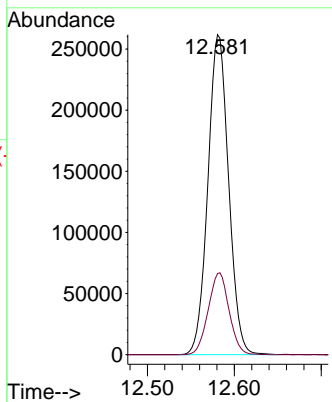
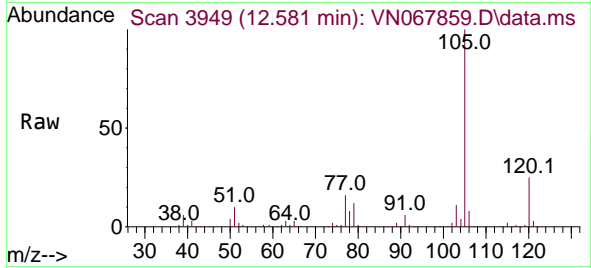




#70  
 Isopropylbenzene  
 Concen: 19.482 ug/l  
 RT: 12.581 min Scan# 3949  
 Delta R.T. -0.000 min  
 Lab File: VN067859.D  
 Acq: 22 Jul 2021 13:49

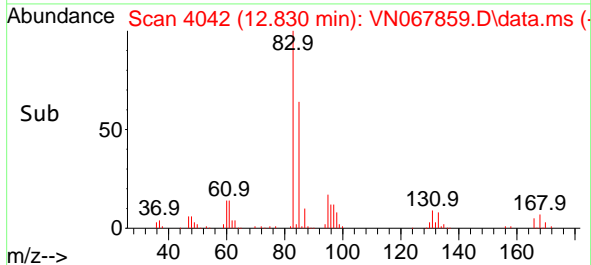
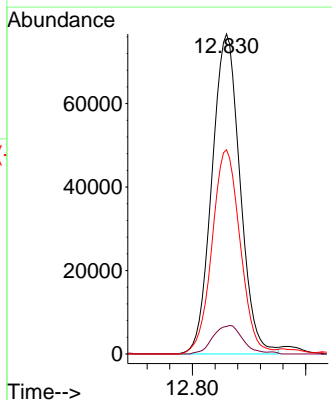
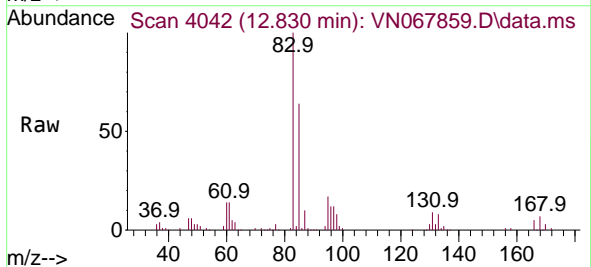
Instrument :  
 MSVOA\_N  
 ClientSampled :  
 VN0722WBSD01

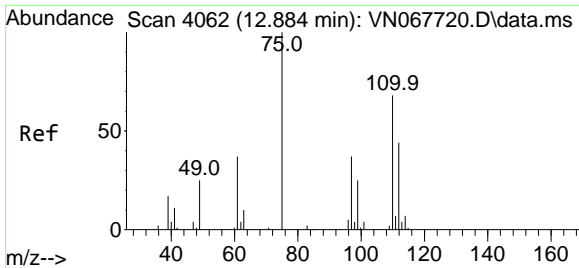
Tgt Ion:105 Resp: 433253  
 Ion Ratio Lower Upper  
 105 100  
 120 25.8 17.9 33.3



#71  
 1,1,2,2-Tetrachloroethane  
 Concen: 20.930 ug/l  
 RT: 12.830 min Scan# 4042  
 Delta R.T. -0.000 min  
 Lab File: VN067859.D  
 Acq: 22 Jul 2021 13:49

Tgt Ion: 83 Resp: 132153  
 Ion Ratio Lower Upper  
 83 100  
 131 9.4 5.2 15.6  
 85 63.9 32.0 96.0

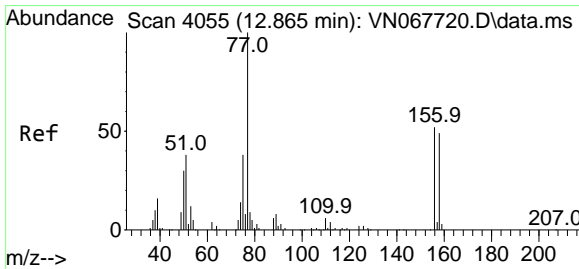
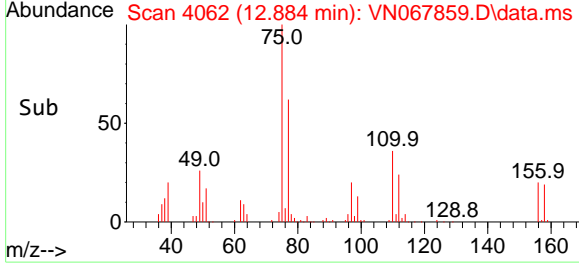
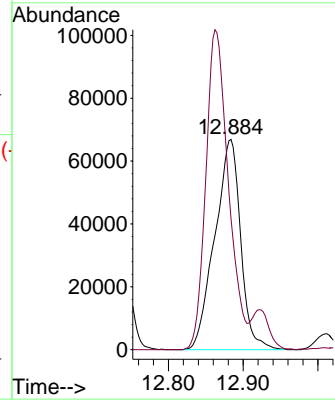
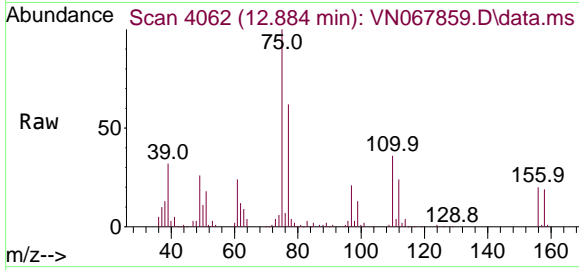




#72  
 1,2,3-Trichloropropane  
 Concen: 30.605 ug/l  
 RT: 12.884 min Scan# 4062  
 Delta R.T. -0.000 min  
 Lab File: VN067859.D  
 Acq: 22 Jul 2021 13:49

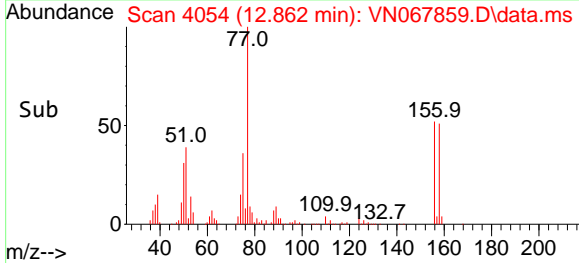
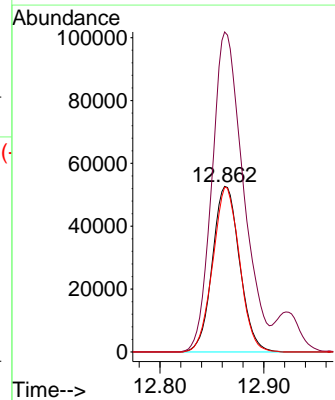
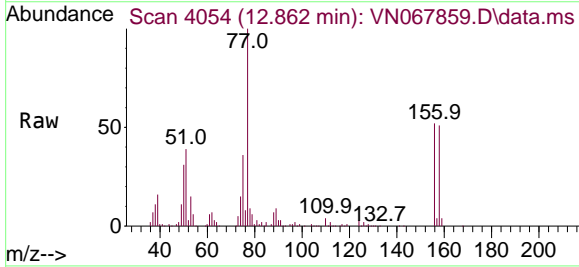
Instrument : MSVOA\_N  
 ClientSampled : VN0722WBSD01

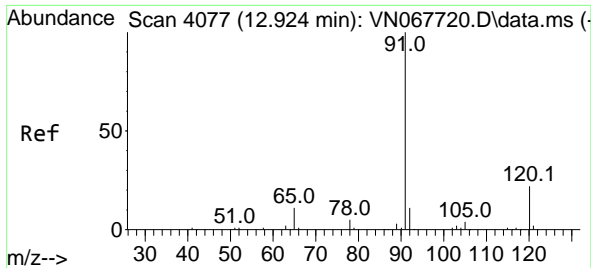
Tgt Ion: 75 Resp: 160650  
 Ion Ratio Lower Upper  
 75 100  
 77 132.5 0.0 365.2



#73  
 Bromobenzene  
 Concen: 18.794 ug/l  
 RT: 12.862 min Scan# 4054  
 Delta R.T. -0.003 min  
 Lab File: VN067859.D  
 Acq: 22 Jul 2021 13:49

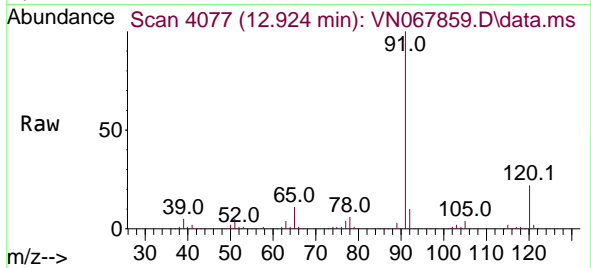
Tgt Ion:156 Resp: 96061  
 Ion Ratio Lower Upper  
 156 100  
 77 221.6 0.0 436.4  
 158 97.7 0.0 191.4



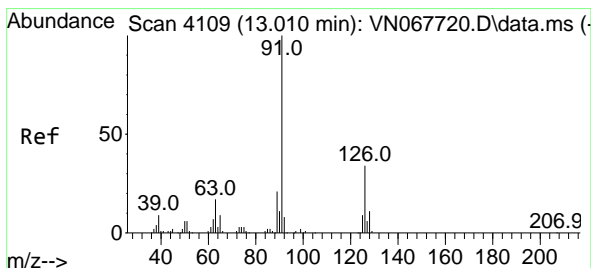
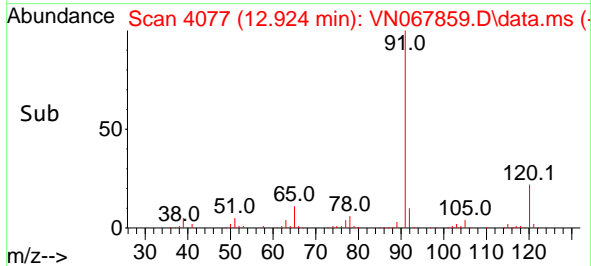
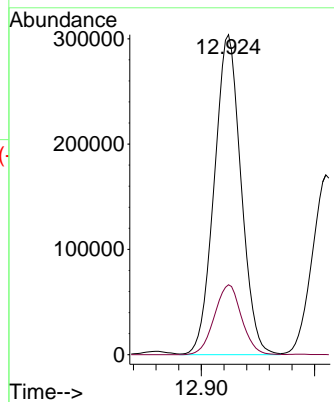


#74  
 n-propylbenzene  
 Concen: 19.557 ug/l  
 RT: 12.924 min Scan# 4077  
 Delta R.T. -0.000 min  
 Lab File: VN067859.D  
 Acq: 22 Jul 2021 13:49

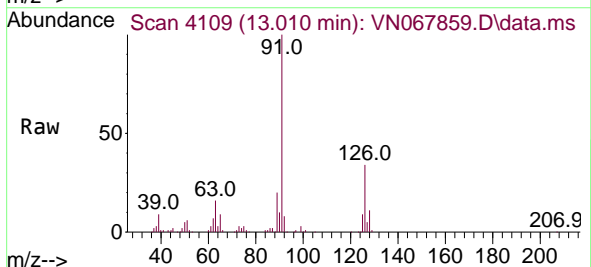
Instrument :  
 MSVOA\_N  
 ClientSampled :  
 VN0722WBSD01



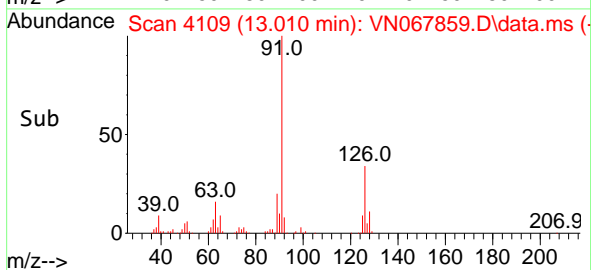
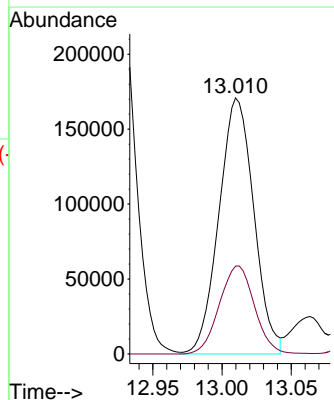
Tgt Ion: 91 Resp: 498358  
 Ion Ratio Lower Upper  
 91 100  
 120 22.1 0.0 44.2



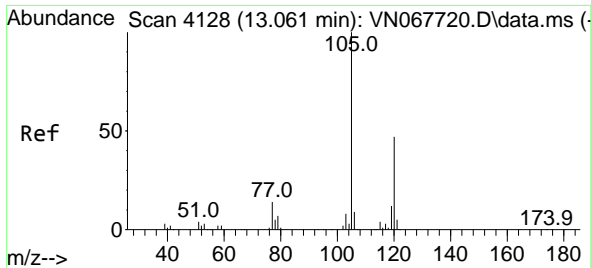
#75  
 2-Chlorotoluene  
 Concen: 19.605 ug/l  
 RT: 13.010 min Scan# 4109  
 Delta R.T. -0.000 min  
 Lab File: VN067859.D  
 Acq: 22 Jul 2021 13:49



Tgt Ion: 91 Resp: 299847  
 Ion Ratio Lower Upper  
 91 100  
 126 34.6 0.0 66.2



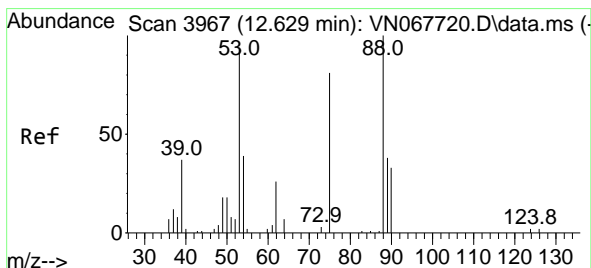
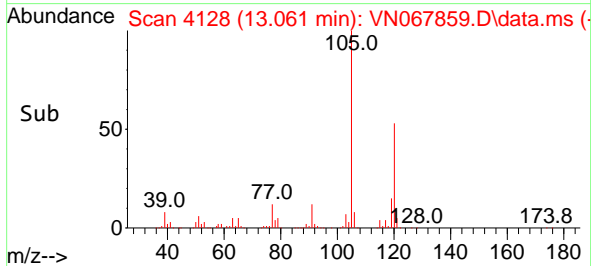
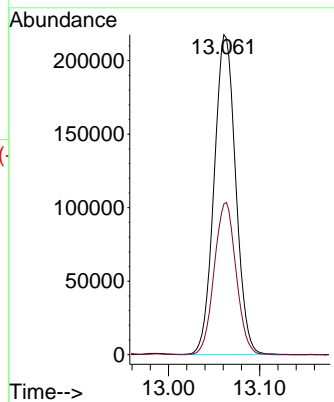
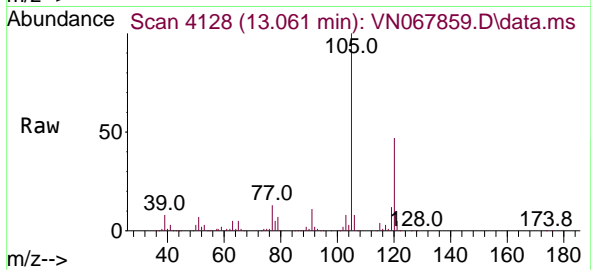




#76  
 1,3,5-Trimethylbenzene  
 Concen: 19.503 ug/l  
 RT: 13.061 min Scan# 4128  
 Delta R.T. -0.000 min  
 Lab File: VN067859.D  
 Acq: 22 Jul 2021 13:49

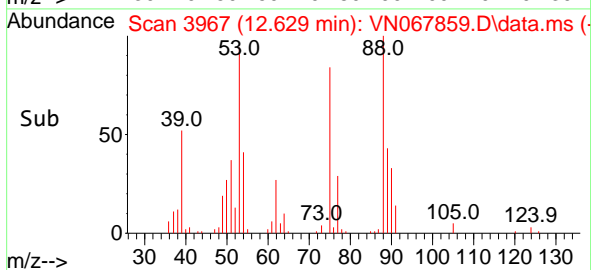
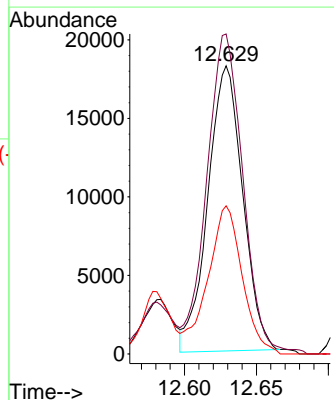
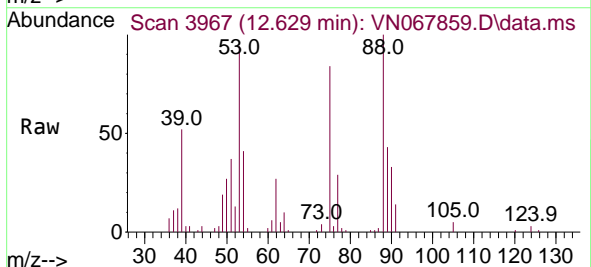
Instrument :  
 MSVOA\_N  
 ClientSampled :  
 VN0722WBSD01

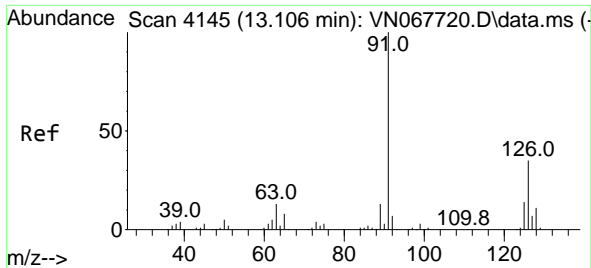
Tgt Ion:105 Resp: 357074  
 Ion Ratio Lower Upper  
 105 100  
 120 48.3 0.0 96.2



#77  
 t-1,4-Dichloro-2-butene  
 Concen: 17.277 ug/l  
 RT: 12.629 min Scan# 3967  
 Delta R.T. -0.000 min  
 Lab File: VN067859.D  
 Acq: 22 Jul 2021 13:49

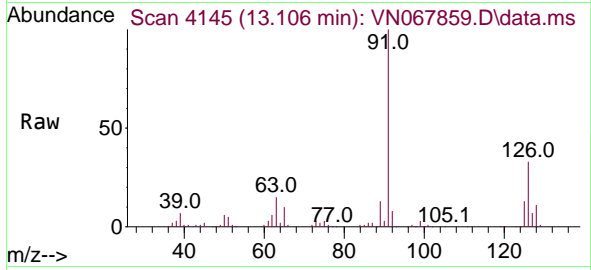
Tgt Ion: 75 Resp: 30606  
 Ion Ratio Lower Upper  
 75 100  
 53 110.5 57.0 171.0  
 89 52.2 24.7 74.1



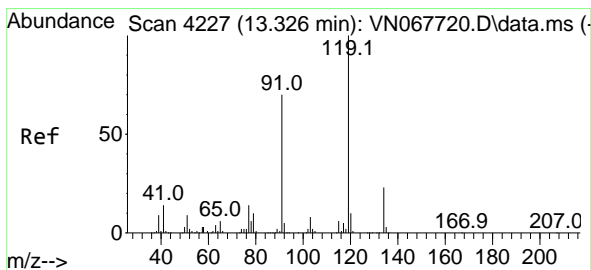
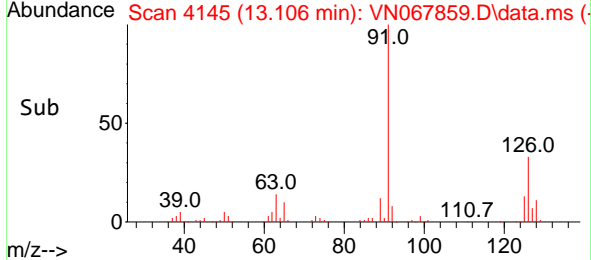
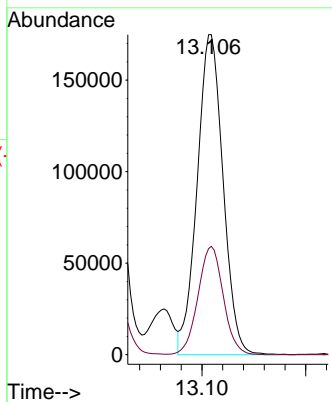


#78  
 4-Chlorotoluene  
 Concen: 19.855 ug/l  
 RT: 13.106 min Scan# 4145  
 Delta R.T. -0.000 min  
 Lab File: VN067859.D  
 Acq: 22 Jul 2021 13:49

**Instrument :**  
 MSVOA\_N  
**ClientSampled :**  
 VN0722WBSD01

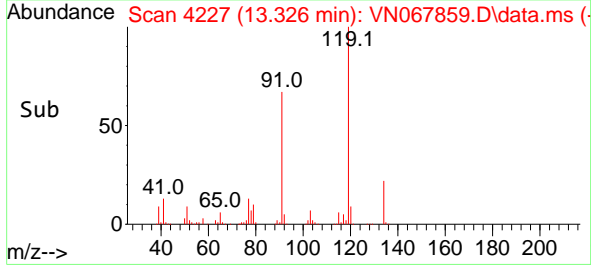
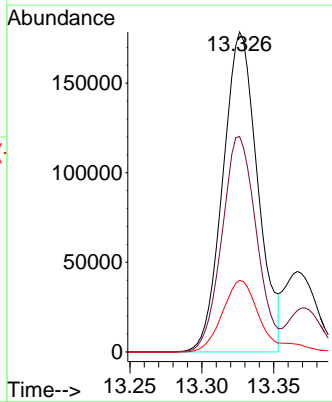
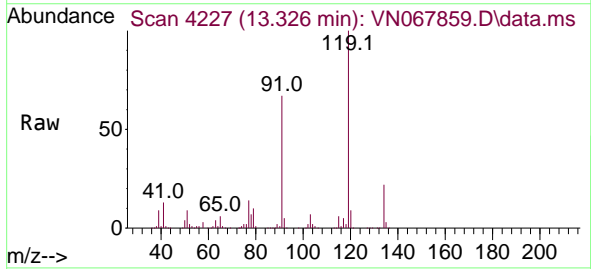


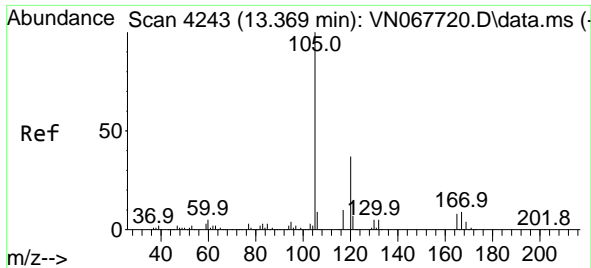
Tgt Ion: 91 Resp: 302755  
 Ion Ratio Lower Upper  
 91 100  
 126 33.1 0.0 66.4



#79  
 tert-butylbenzene  
 Concen: 19.084 ug/l  
 RT: 13.326 min Scan# 4227  
 Delta R.T. -0.000 min  
 Lab File: VN067859.D  
 Acq: 22 Jul 2021 13:49

Tgt Ion: 119 Resp: 300006  
 Ion Ratio Lower Upper  
 119 100  
 91 67.0 0.0 137.2  
 134 24.8 0.0 50.2

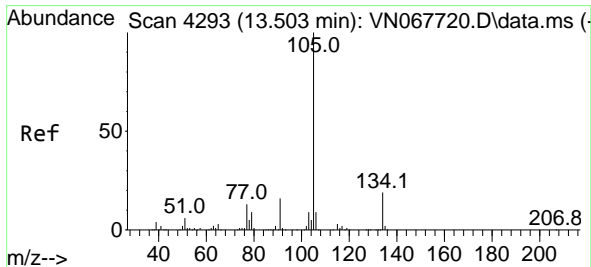
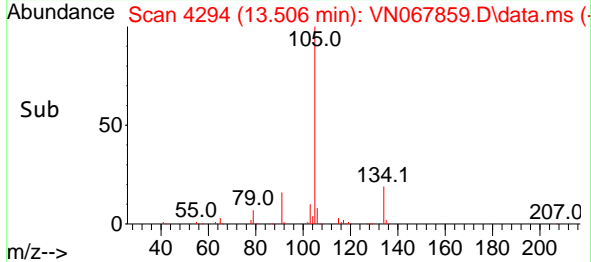
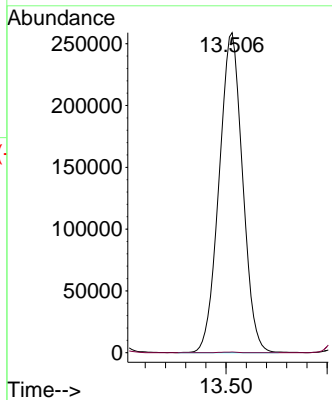
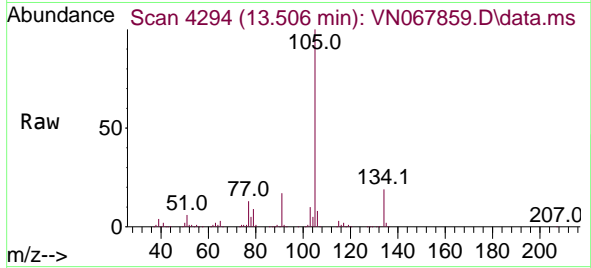




#80  
 1,2,4-Trimethylbenzene  
 Concen: 22.958 ug/l  
 RT: 13.506 min Scan# 4294  
 Delta R.T. 0.137 min  
 Lab File: VN067859.D  
 Acq: 22 Jul 2021 13:49

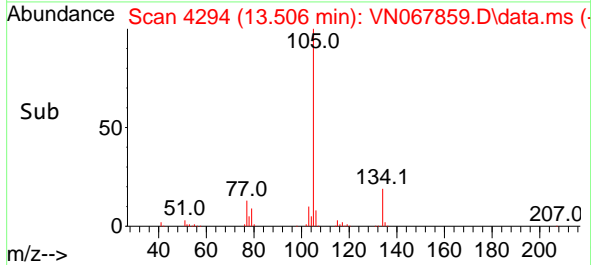
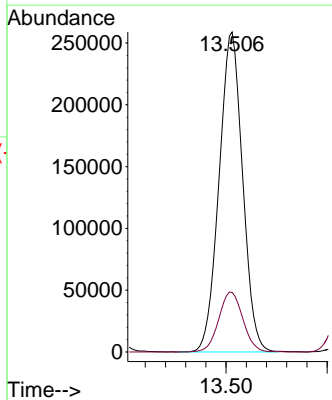
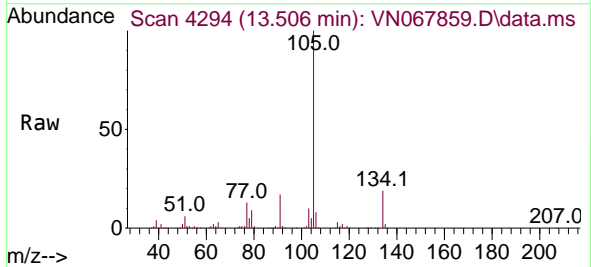
Instrument :  
 MSVOA\_N  
 ClientSampled :  
 VN0722WBSD01

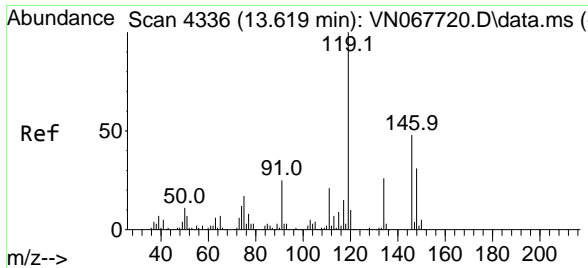
Tgt Ion:105 Resp: 417391  
 Ion Ratio Lower Upper  
 105 100  
 120 0.1 0.0 0.2



#81  
 sec-Butylbenzene  
 Concen: 19.140 ug/l  
 RT: 13.506 min Scan# 4294  
 Delta R.T. 0.003 min  
 Lab File: VN067859.D  
 Acq: 22 Jul 2021 13:49

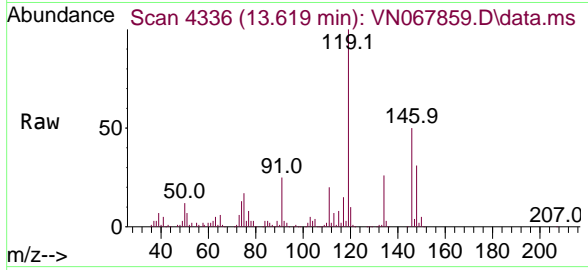
Tgt Ion:105 Resp: 417391  
 Ion Ratio Lower Upper  
 105 100  
 134 19.2 0.0 38.4





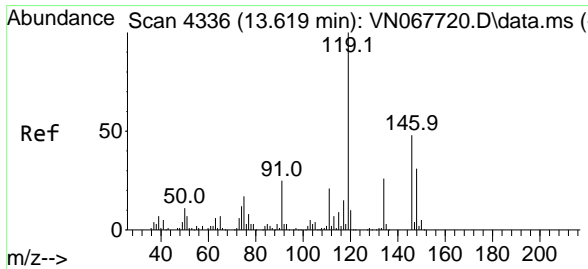
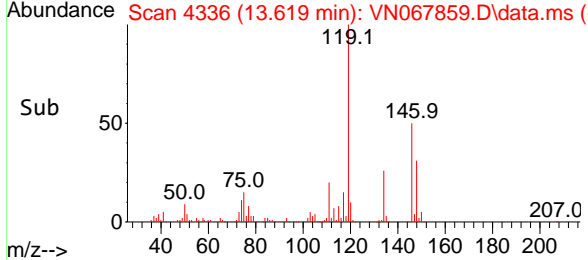
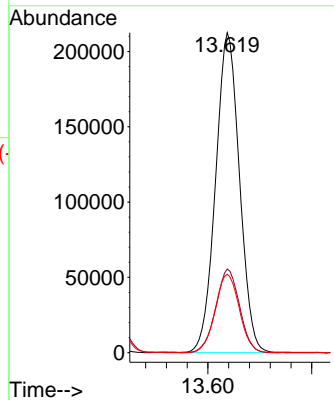
#82  
 p-Isopropyltoluene  
 Concen: 18.696 ug/l  
 RT: 13.619 min Scan# 4336  
 Delta R.T. -0.000 min  
 Lab File: VN067859.D  
 Acq: 22 Jul 2021 13:49

**Instrument :**  
 MSVOA\_N  
**ClientSampled :**  
 VN0722WBSD01

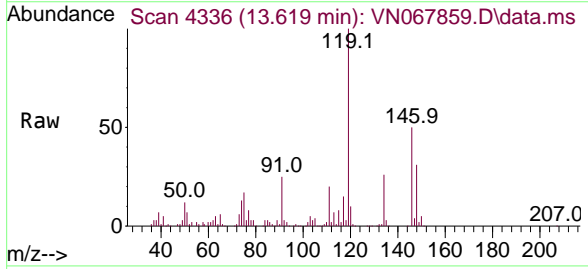


Tgt Ion:119 Resp: 339345

Ion	Ratio	Lower	Upper
119	100		
134	25.9	0.0	51.0
91	25.0	0.0	50.6

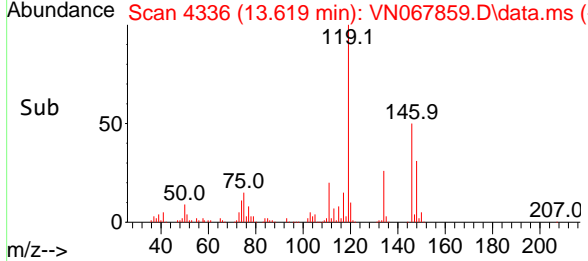
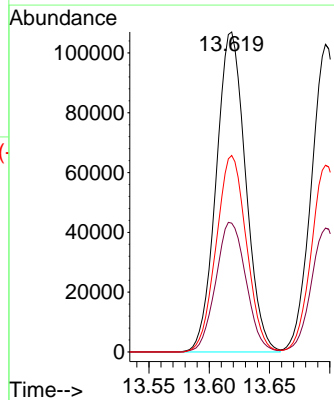


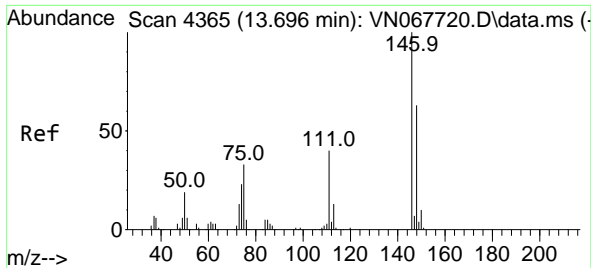
#83  
 1,3-Dichlorobenzene  
 Concen: 19.074 ug/l  
 RT: 13.619 min Scan# 4336  
 Delta R.T. -0.000 min  
 Lab File: VN067859.D  
 Acq: 22 Jul 2021 13:49



Tgt Ion:146 Resp: 182067

Ion	Ratio	Lower	Upper
146	100		
111	41.5	21.1	63.1
148	63.0	31.9	95.7

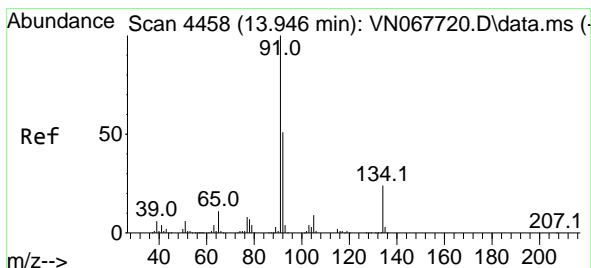
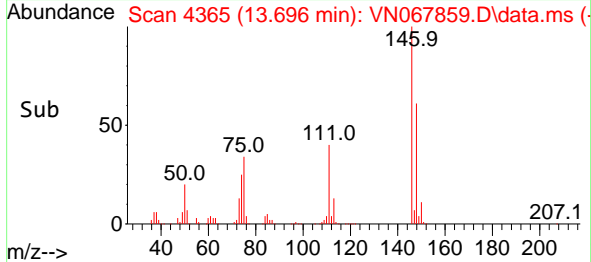
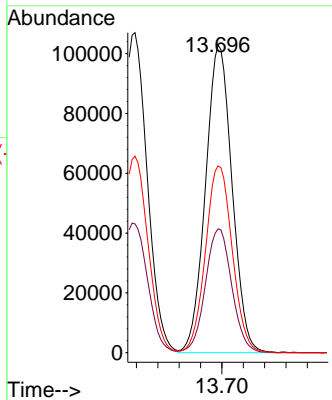
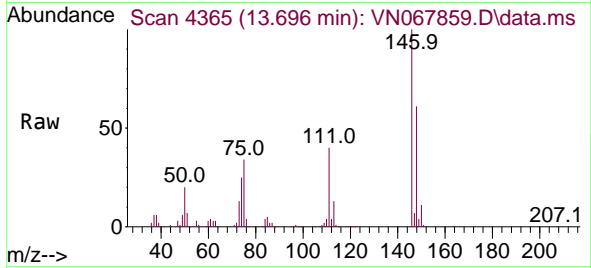




#84  
 1,4-Dichlorobenzene  
 Concen: 19.124 ug/l  
 RT: 13.696 min Scan# 4365  
 Delta R.T. -0.000 min  
 Lab File: VN067859.D  
 Acq: 22 Jul 2021 13:49

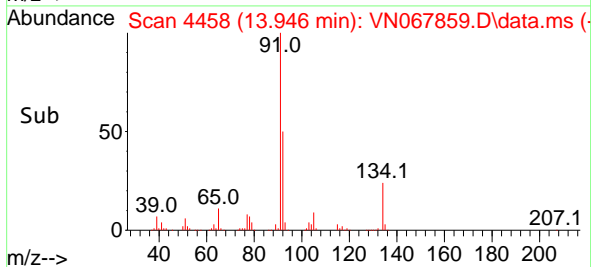
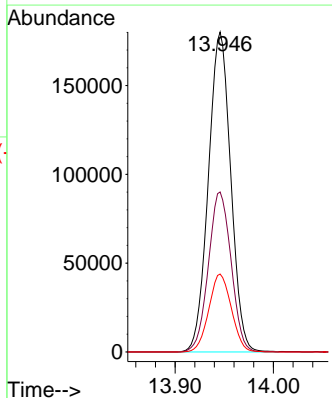
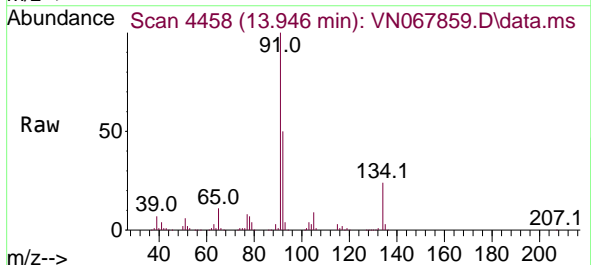
Instrument :  
 MSVOA\_N  
 ClientSampled :  
 VN0722WBSD01

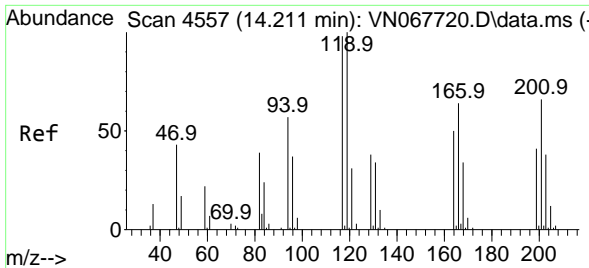
Tgt Ion	Resp	Lower	Upper
146	177820		
146	100		
111	40.0	20.0	59.9
148	61.3	31.8	95.3



#85  
 n-Butylbenzene  
 Concen: 18.956 ug/l  
 RT: 13.946 min Scan# 4458  
 Delta R.T. -0.000 min  
 Lab File: VN067859.D  
 Acq: 22 Jul 2021 13:49

Tgt Ion	Resp	Lower	Upper
91	285443		
91	100		
92	50.7	0.0	102.6
134	24.5	0.0	48.6

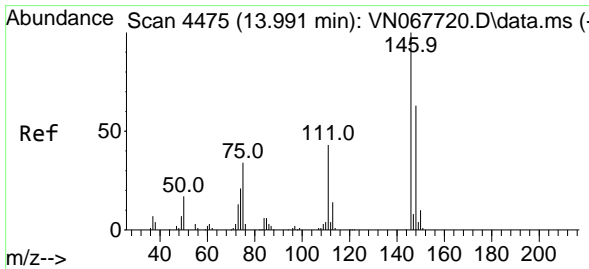
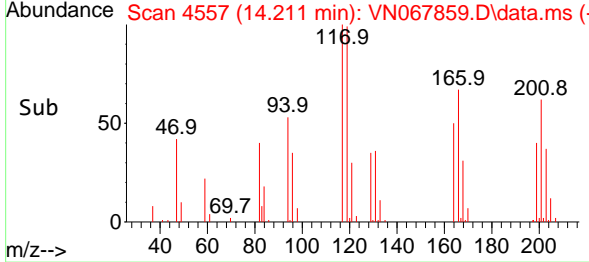
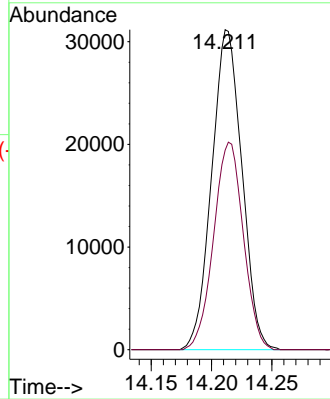
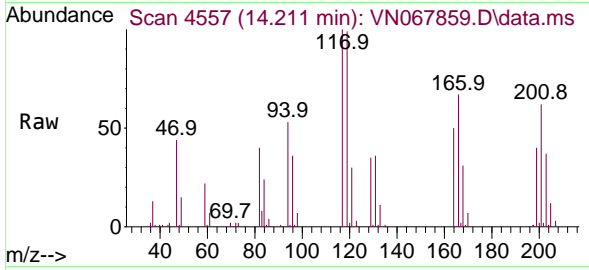




#86  
 Hexachloroethane  
 Concen: 17.987 ug/l  
 RT: 14.211 min Scan# 4557  
 Delta R.T. -0.000 min  
 Lab File: VN067859.D  
 Acq: 22 Jul 2021 13:49

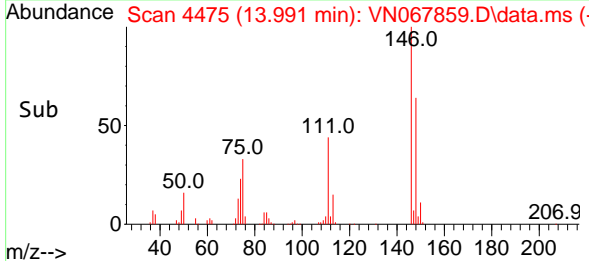
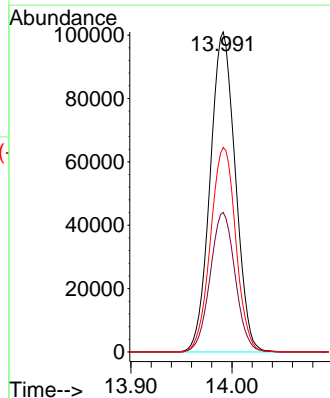
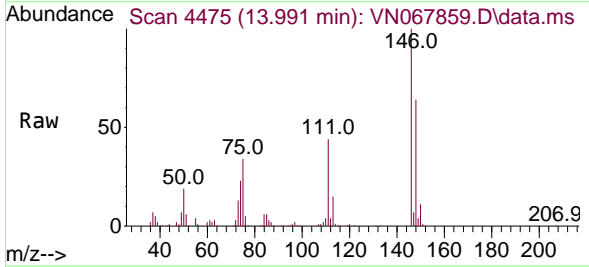
Instrument :  
 MSVOA\_N  
 ClientSampleID :  
 VN0722WBSD01

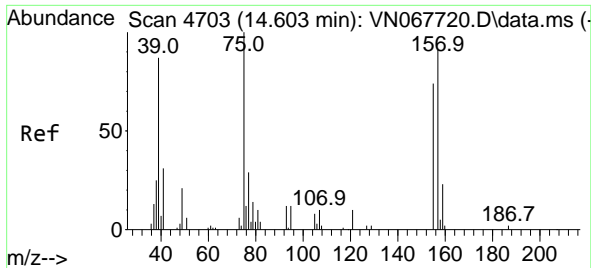
Tgt Ion:117 Resp: 54311  
 Ion Ratio Lower Upper  
 117 100  
 201 63.8 31.8 95.3



#87  
 1,2-Dichlorobenzene  
 Concen: 19.184 ug/l  
 RT: 13.991 min Scan# 4475  
 Delta R.T. -0.000 min  
 Lab File: VN067859.D  
 Acq: 22 Jul 2021 13:49

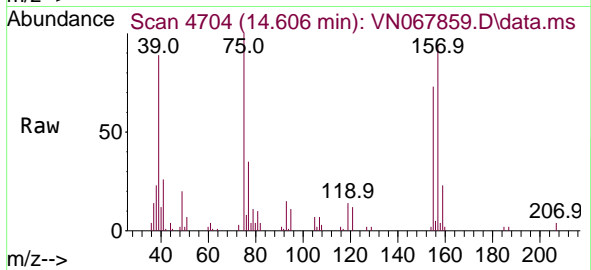
Tgt Ion:146 Resp: 174831  
 Ion Ratio Lower Upper  
 146 100  
 111 43.3 22.0 66.0  
 148 64.2 31.7 95.1



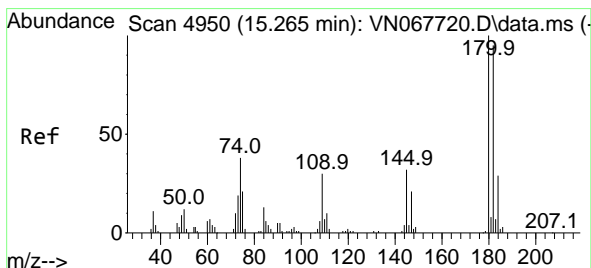
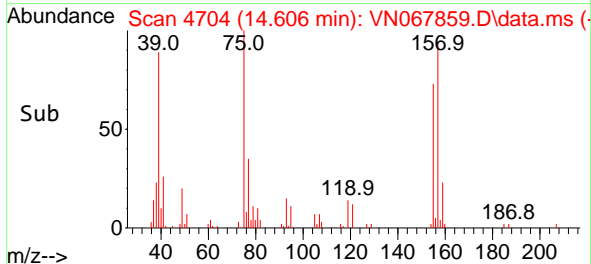
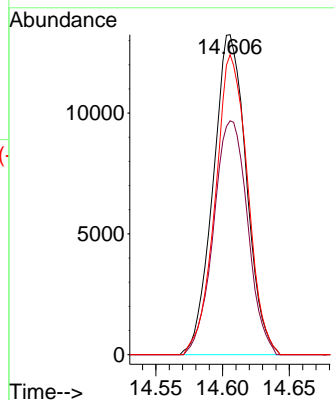


#88  
 1,2-Dibromo-3-Chloropropane  
 Concen: 20.313 ug/l  
 RT: 14.606 min Scan# 4704  
 Delta R.T. 0.003 min  
 Lab File: VN067859.D  
 Acq: 22 Jul 2021 13:49

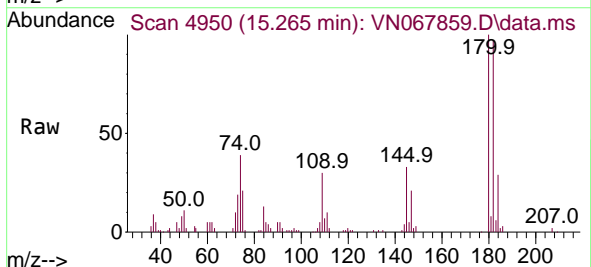
Instrument :  
 MSVOA\_N  
 ClientSampleId :  
 VN0722WBSD01



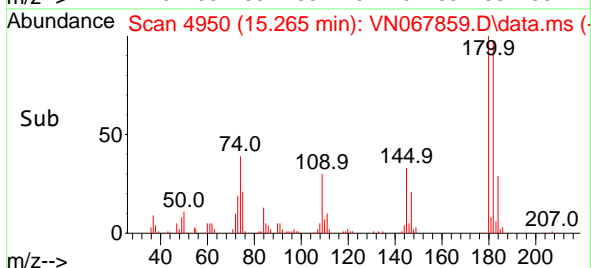
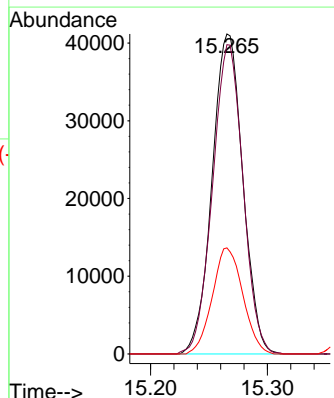
Tgt Ion: 75 Resp: 22946  
 Ion Ratio Lower Upper  
 75 100  
 155 75.0 59.2 88.8  
 157 91.3 75.4 113.2

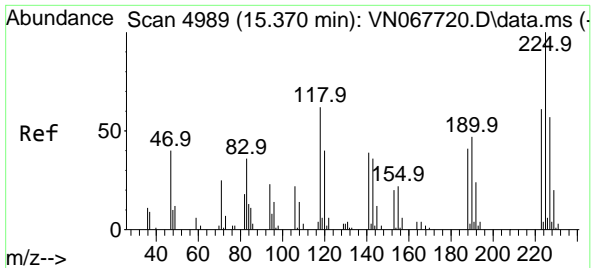


#89  
 1,2,4-Trichlorobenzene  
 Concen: 18.123 ug/l  
 RT: 15.265 min Scan# 4950  
 Delta R.T. -0.000 min  
 Lab File: VN067859.D  
 Acq: 22 Jul 2021 13:49



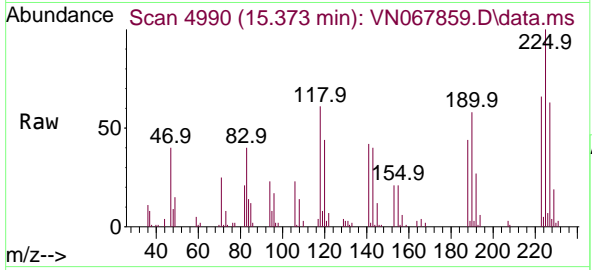
Tgt Ion: 180 Resp: 75304  
 Ion Ratio Lower Upper  
 180 100  
 182 95.5 74.5 111.7  
 145 32.9 25.4 38.0



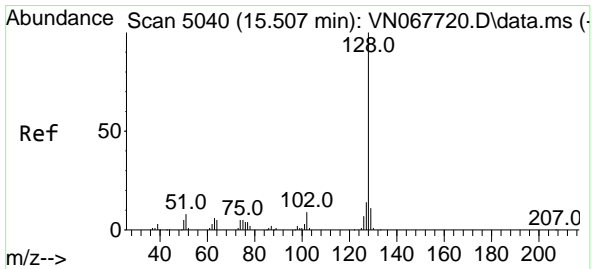
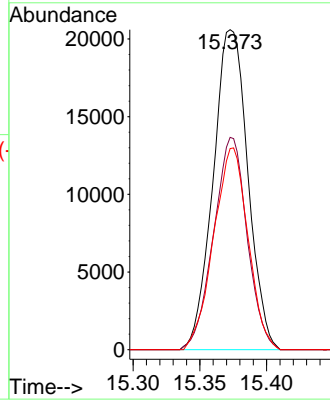
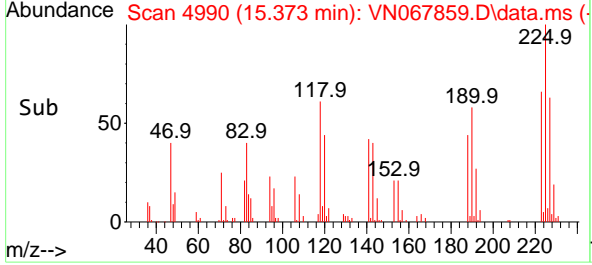


#90  
 Hexachlorobutadiene  
 Concen: 18.688 ug/l  
 RT: 15.373 min Scan# 4990  
 Delta R.T. 0.003 min  
 Lab File: VN067859.D  
 Acq: 22 Jul 2021 13:49

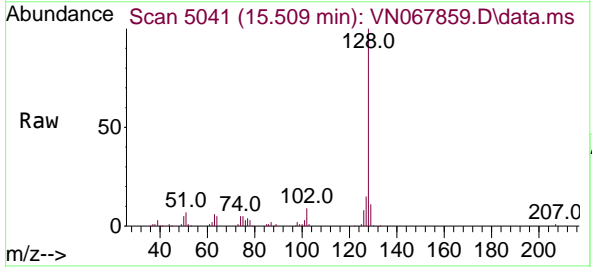
Instrument :  
 MSVOA\_N  
 ClientSampleId :  
 VN0722WBSD01



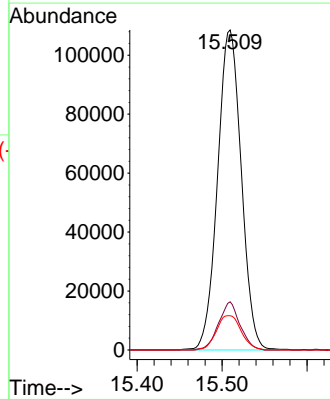
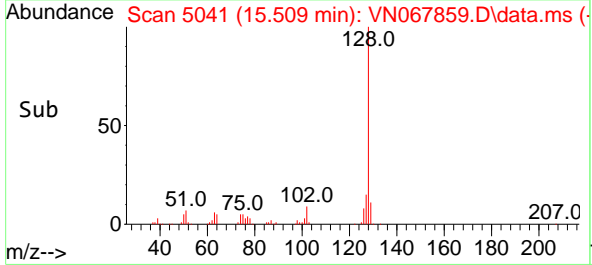
Tgt Ion:225 Resp: 37324  
 Ion Ratio Lower Upper  
 225 100  
 223 64.0 0.0 124.6  
 227 62.4 0.0 115.6



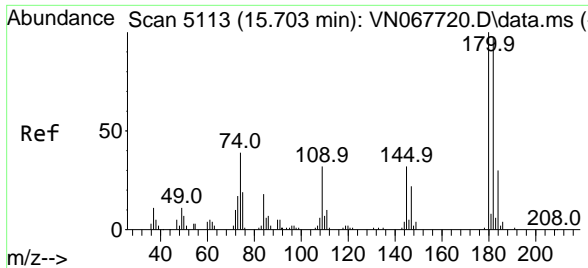
#91  
 Naphthalene  
 Concen: 17.833 ug/l  
 RT: 15.509 min Scan# 5041  
 Delta R.T. 0.003 min  
 Lab File: VN067859.D  
 Acq: 22 Jul 2021 13:49



Tgt Ion:128 Resp: 210514  
 Ion Ratio Lower Upper  
 128 100  
 127 13.6 10.9 16.3  
 129 11.2 8.7 13.1

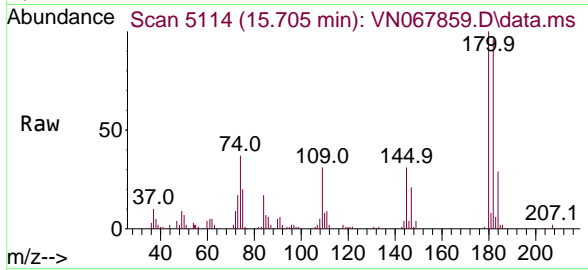






#92  
 1,2,3-Trichlorobenzene  
 Concen: 17.872 ug/l  
 RT: 15.705 min Scan# 5114  
 Delta R.T. 0.003 min  
 Lab File: VN067859.D  
 Acq: 22 Jul 2021 13:49

Instrument :  
 MSVOA\_N  
 ClientSampled :  
 VN0722WBSD01



Tgt Ion:180 Resp: 71147

Ion	Ratio	Lower	Upper
180	100		
182	96.7	0.0	190.8
145	34.6	0.0	68.2

