

Data Path : Z:\voasrv\HPCHEM1\MSVOA_N\Data\VN072425\
 Data File : VN087411.D
 Acq On : 24 Jul 2025 11:00
 Operator : JC\MD
 Sample : VN0724WBL01
 Misc : 5.0mL/MSVOA_N/WATER
 ALS Vial : 5 Sample Multiplier: 1

Instrument :
 MSVOA_N
ClientSampleId :
 VN0724WBL01

Quant Time: Jul 25 04:52:55 2025
 Quant Method : Z:\voasrv\HPCHEM1\MSVOA_N\methods\624N072325W.M
 Quant Title : METHOD 624 VOLATILE ORGANIC ANALYSIS
 QLast Update : Thu Jul 24 05:11:26 2025
 Response via : Initial Calibration

Compound	R.T.	QIon	Response	Conc	Units	Dev(Min)

Internal Standards						
1) Bromochloromethane	7.800	128	27859	30.000	ug/l	0.00
28) 1,4-Difluorobenzene	9.082	114	138104	30.000	ug/l	0.00
57) Chlorobenzene-d5	11.847	117	122527	30.000	ug/l	0.00
System Monitoring Compounds						
27) 1,2-Dichloroethane-d4	8.559	65	70448	30.661	ug/l	0.00
Spiked Amount	30.000	Range	91 - 110	Recovery	=	102.200%
60) 4-Bromofluorobenzene	12.829	95	48812	23.879	ug/l	0.00
Spiked Amount	30.000	Range	63 - 112	Recovery	=	79.600%
63) Toluene-d8	10.547	98	159142	28.560	ug/l	0.00
Spiked Amount	30.000	Range	91 - 112	Recovery	=	95.200%

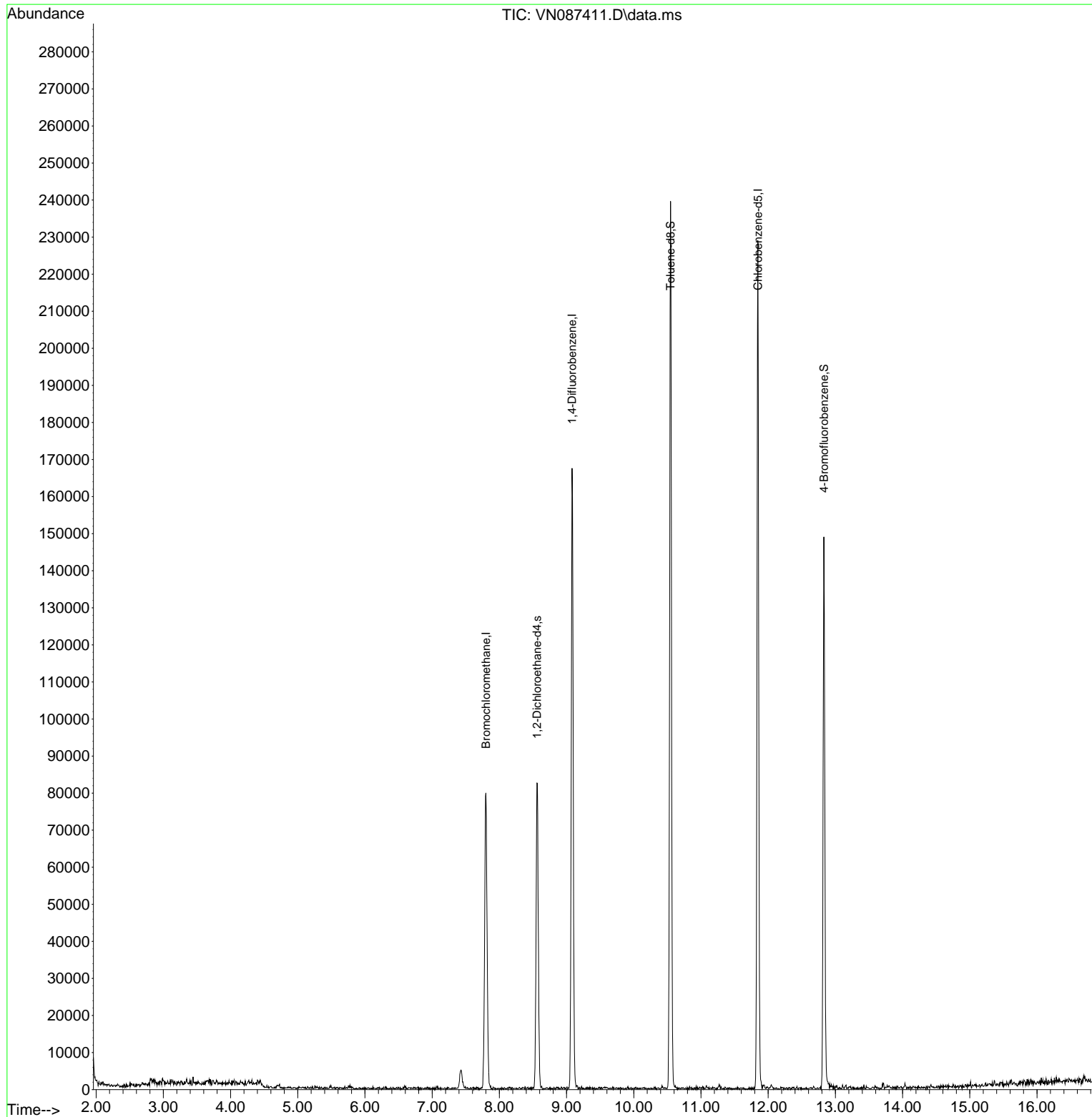
Target Compounds Qvalue

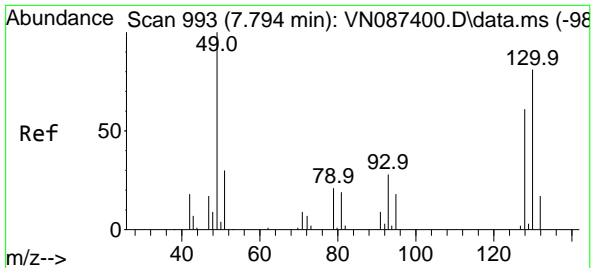
(#) = qualifier out of range (m) = manual integration (+) = signals summed

Data Path : Z:\voasrv\HPCHEM1\MSVOA_N\Data\VN072425\
Data File : VN087411.D
Acq On : 24 Jul 2025 11:00
Operator : JC\MD
Sample : VN0724WBL01
Misc : 5.0mL/MSVOA_N/WATER
ALS Vial : 5 Sample Multiplier: 1

Instrument :
MSVOA_N
ClientSampleId :
VN0724WBL01

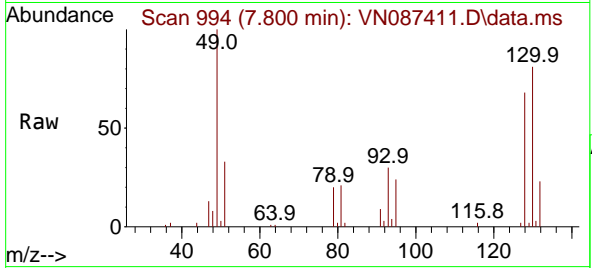
Quant Time: Jul 25 04:52:55 2025
Quant Method : Z:\voasrv\HPCHEM1\MSVOA_N\methods\624N072325W.M
Quant Title : METHOD 624 VOLATILE ORGANIC ANALYSIS
QLast Update : Thu Jul 24 05:11:26 2025
Response via : Initial Calibration





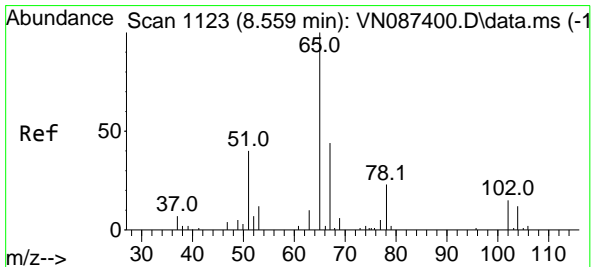
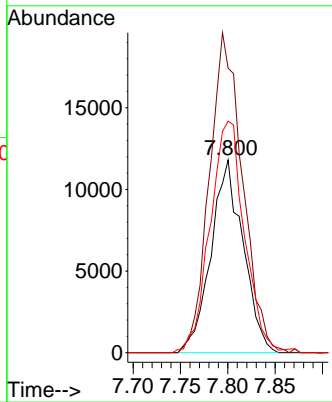
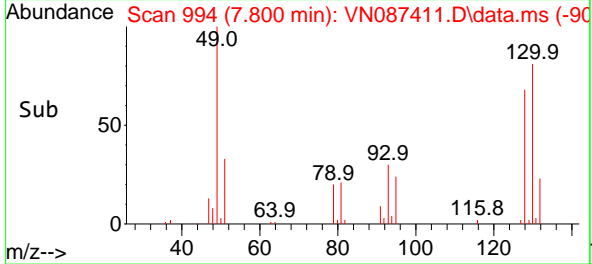
#1
 Bromochloromethane
 Concen: 30.000 ug/l
 RT: 7.800 min Scan# 994
 Delta R.T. 0.006 min
 Lab File: VN087411.D
 Acq: 24 Jul 2025 11:00

Instrument :
 MSVOA_N
 ClientSampleId :
 VN0724WBL01

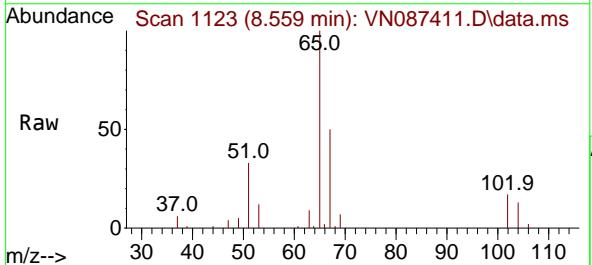


Tgt Ion:128 Resp: 27859

Ion	Ratio	Lower	Upper
128	100		
49	170.6	0.0	446.2
130	128.4	0.0	331.0

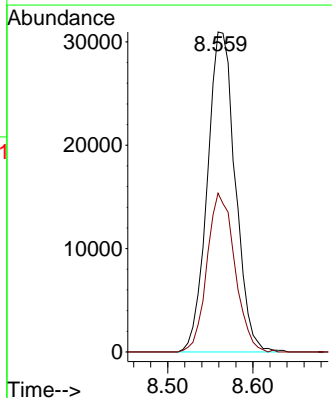
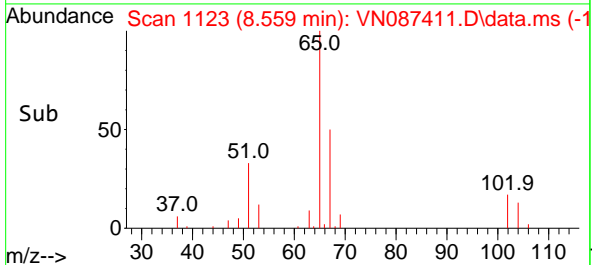


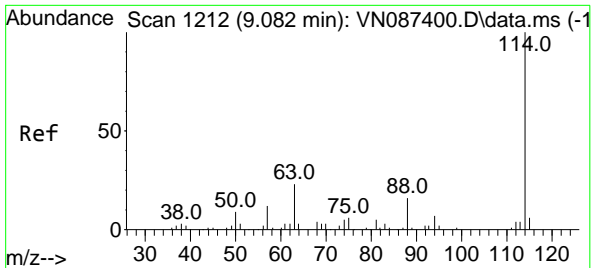
#27
 1,2-Dichloroethane-d4
 Concen: 30.661 ug/l
 RT: 8.559 min Scan# 1123
 Delta R.T. 0.000 min
 Lab File: VN087411.D
 Acq: 24 Jul 2025 11:00



Tgt Ion: 65 Resp: 70448

Ion	Ratio	Lower	Upper
65	100		
67	49.3	40.2	60.4



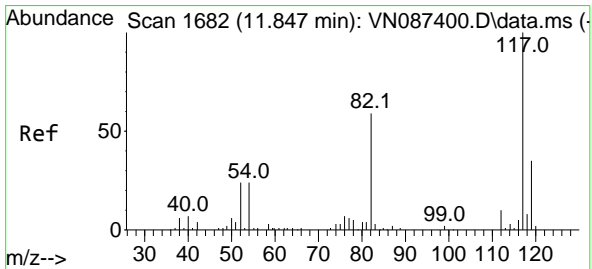
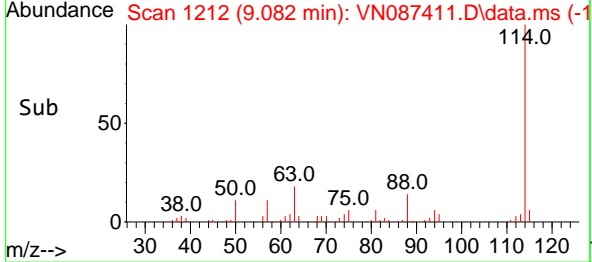
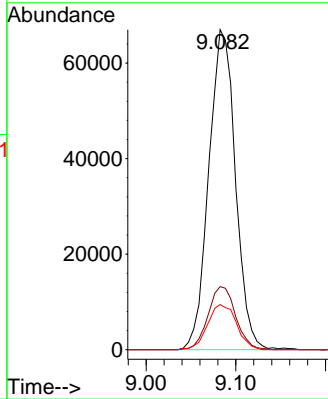
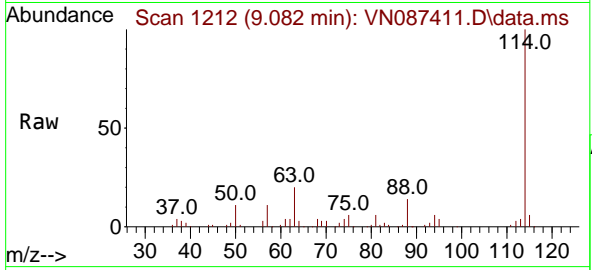


#28
 1,4-Difluorobenzene
 Concen: 30.000 ug/l
 RT: 9.082 min Scan# 111
 Delta R.T. 0.000 min
 Lab File: VN087411.D
 Acq: 24 Jul 2025 11:00

Instrument :
 MSVOA_N
 ClientSampleId :
 VN0724WBL01

Tgt Ion:114 Resp: 138104

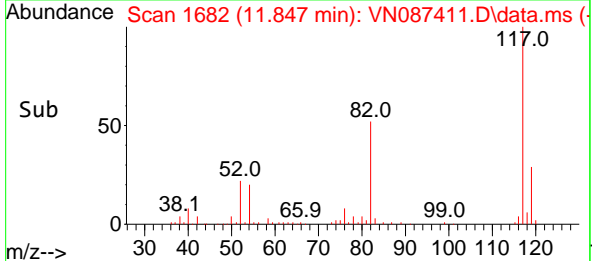
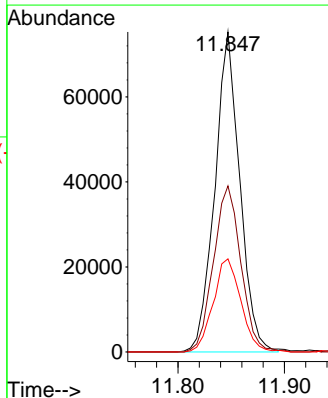
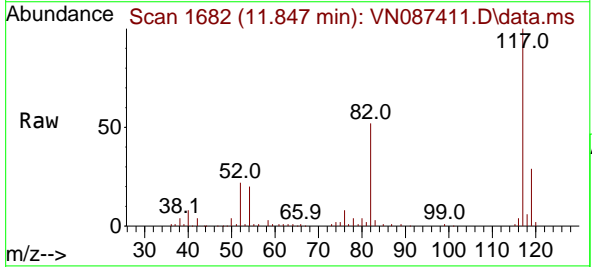
Ion	Ratio	Lower	Upper
114	100		
63	20.4	16.8	25.2
88	15.3	12.5	18.7

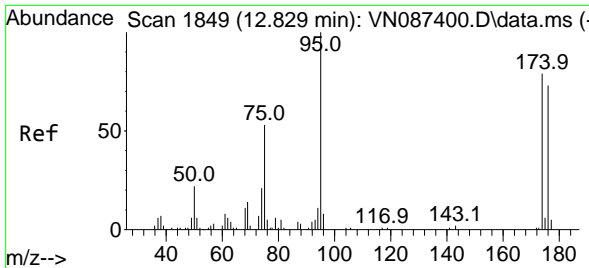


#57
 Chlorobenzene-d5
 Concen: 30.000 ug/l
 RT: 11.847 min Scan# 1682
 Delta R.T. 0.000 min
 Lab File: VN087411.D
 Acq: 24 Jul 2025 11:00

Tgt Ion:117 Resp: 122527

Ion	Ratio	Lower	Upper
117	100		
82	56.9	44.1	66.1
119	32.3	25.4	38.2

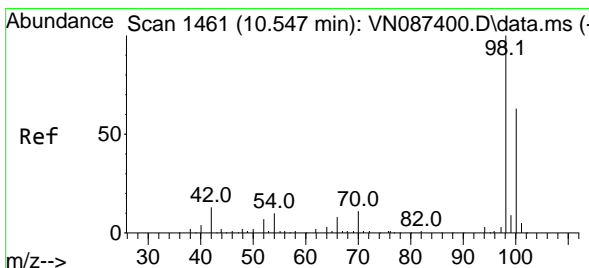
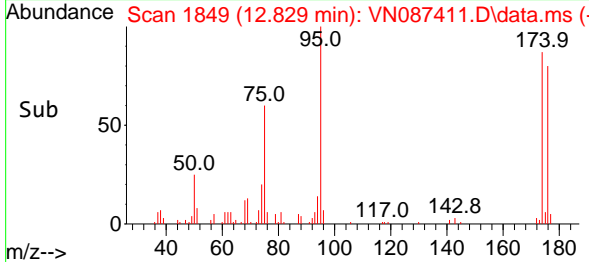
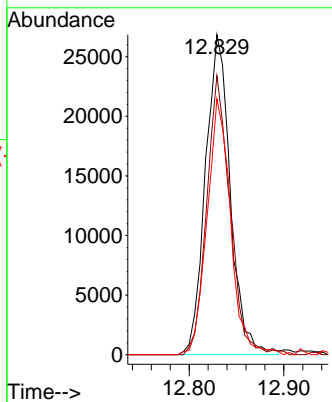
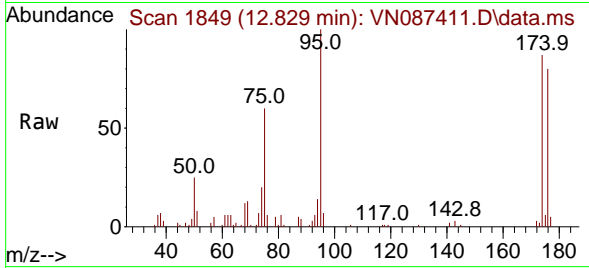




#60
 4-Bromofluorobenzene
 Concen: 23.879 ug/l
 RT: 12.829 min Scan# 1849
 Delta R.T. 0.000 min
 Lab File: VN087411.D
 Acq: 24 Jul 2025 11:00

Instrument :
 MSVOA_N
 ClientSampleId :
 VN0724WBL01

Tgt Ion	Resp	Lower	Upper
95	48812	100	100
174	81.6	62.1	93.1
176	76.0	57.9	86.9



#63
 Toluene-d8
 Concen: 28.560 ug/l
 RT: 10.547 min Scan# 1461
 Delta R.T. 0.000 min
 Lab File: VN087411.D
 Acq: 24 Jul 2025 11:00

Tgt Ion	Resp	Lower	Upper
98	159142	100	100
100	66.3	51.1	76.7

