

Data Path : Z:\voasrv\HPCHEM1\MSVOA_N\Data\VN072425\
 Data File : VN087412.D
 Acq On : 24 Jul 2025 12:46
 Operator : JC\MD
 Sample : IBLK
 Misc : 5.0mL/MSVOA_N/WATER
 ALS Vial : 8 Sample Multiplier: 1

Instrument :
 MSVOA_N
ClientSampleId :
 IBLK

Quant Time: Jul 25 04:53:16 2025
 Quant Method : Z:\voasrv\HPCHEM1\MSVOA_N\methods\624N072325W.M
 Quant Title : METHOD 624 VOLATILE ORGANIC ANALYSIS
 QLast Update : Thu Jul 24 05:11:26 2025
 Response via : Initial Calibration

Compound	R.T.	QIon	Response	Conc	Units	Dev(Min)

Internal Standards						
1) Bromochloromethane	7.794	128	26088	30.000	ug/l	0.00
28) 1,4-Difluorobenzene	9.088	114	119739	30.000	ug/l	0.00
57) Chlorobenzene-d5	11.847	117	107502	30.000	ug/l	0.00
System Monitoring Compounds						
27) 1,2-Dichloroethane-d4	8.565	65	65362	30.379	ug/l	0.00
Spiked Amount	30.000	Range	91 - 110	Recovery	=	101.267%
60) 4-Bromofluorobenzene	12.829	95	42695	23.805	ug/l	0.00
Spiked Amount	30.000	Range	63 - 112	Recovery	=	79.367%
63) Toluene-d8	10.547	98	142025	29.051	ug/l	0.00
Spiked Amount	30.000	Range	91 - 112	Recovery	=	96.833%

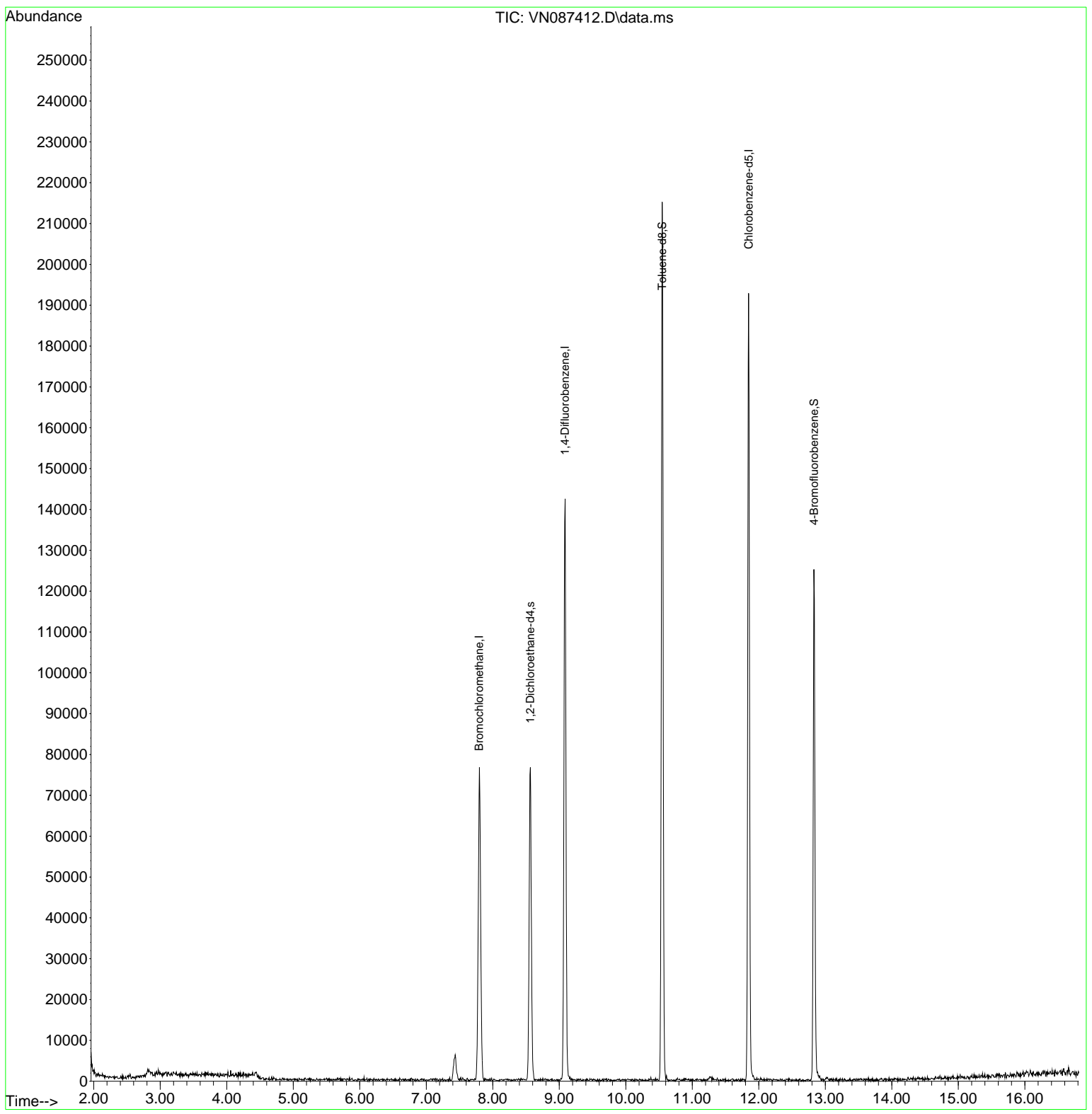
Target Compounds Qvalue

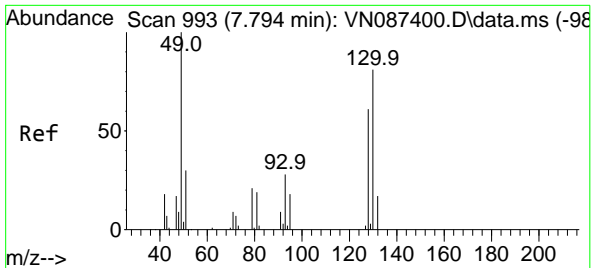
(#) = qualifier out of range (m) = manual integration (+) = signals summed

Data Path : Z:\voasrv\HPCHEM1\MSVOA_N\Data\VN072425\
 Data File : VN087412.D
 Acq On : 24 Jul 2025 12:46
 Operator : JC\MD
 Sample : IBLK
 Misc : 5.0mL/MSVOA_N/WATER
 ALS Vial : 8 Sample Multiplier: 1

Instrument :
 MSVOA_N
ClientSampleId :
 IBLK

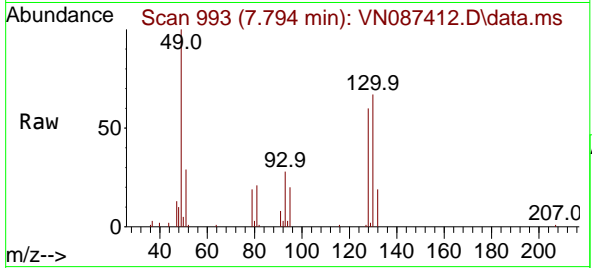
Quant Time: Jul 25 04:53:16 2025
 Quant Method : Z:\voasrv\HPCHEM1\MSVOA_N\methods\624N072325W.M
 Quant Title : METHOD 624 VOLATILE ORGANIC ANALYSIS
 QLast Update : Thu Jul 24 05:11:26 2025
 Response via : Initial Calibration





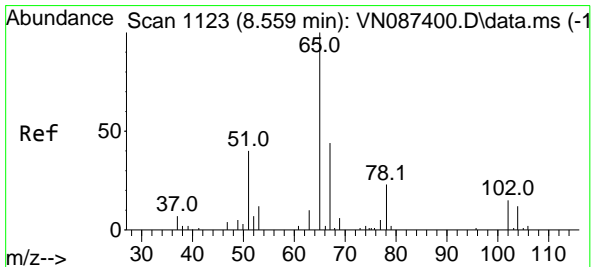
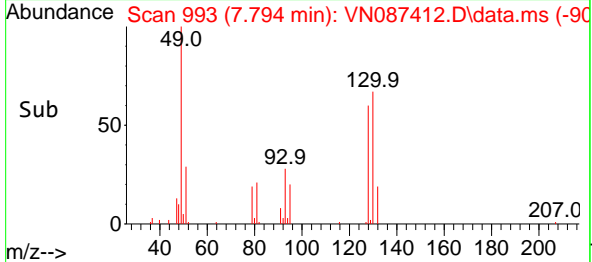
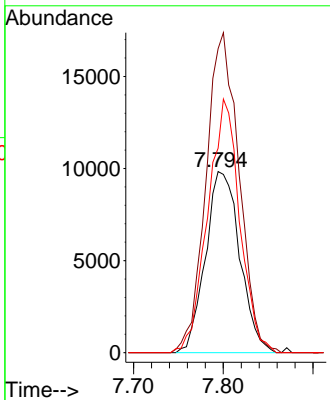
#1
 Bromochloromethane
 Concen: 30.000 ug/l
 RT: 7.794 min Scan# 993
 Delta R.T. 0.000 min
 Lab File: VN087412.D
 Acq: 24 Jul 2025 12:46

Instrument :
 MSVOA_N
 ClientSampleId :
 IBLK



Tgt Ion:128 Resp: 26088

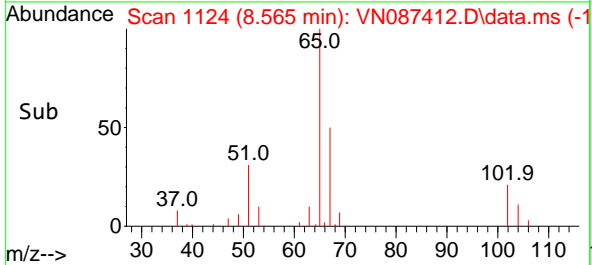
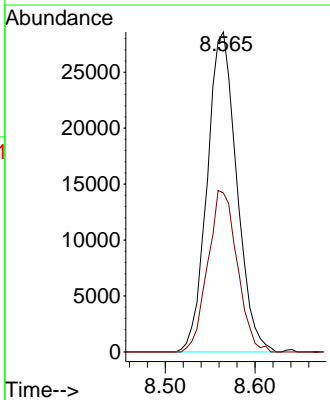
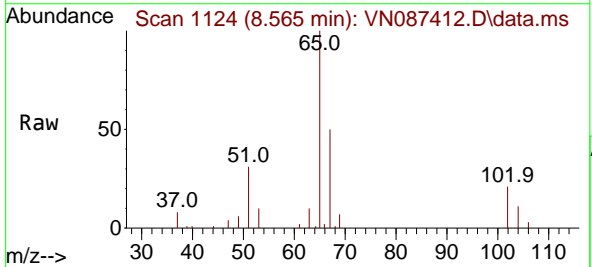
Ion	Ratio	Lower	Upper
128	100		
49	170.4	0.0	446.2
130	131.0	0.0	331.0

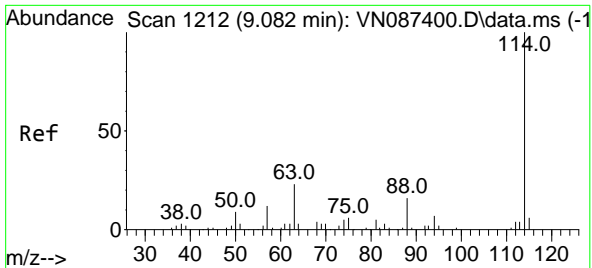


#27
 1,2-Dichloroethane-d4
 Concen: 30.379 ug/l
 RT: 8.565 min Scan# 1124
 Delta R.T. 0.006 min
 Lab File: VN087412.D
 Acq: 24 Jul 2025 12:46

Tgt Ion: 65 Resp: 65362

Ion	Ratio	Lower	Upper
65	100		
67	49.9	40.2	60.4



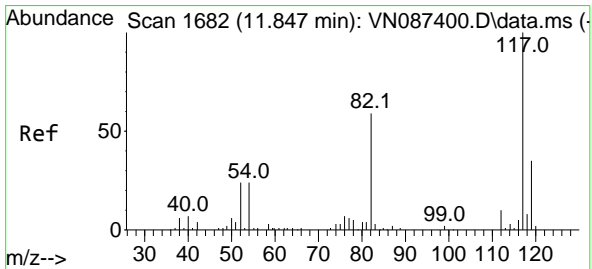
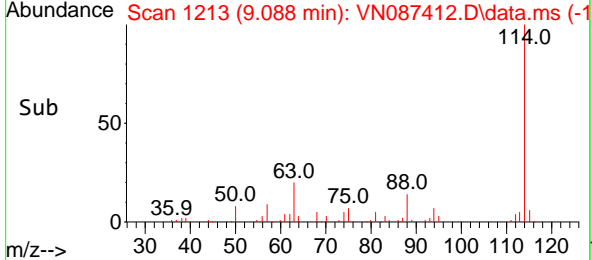
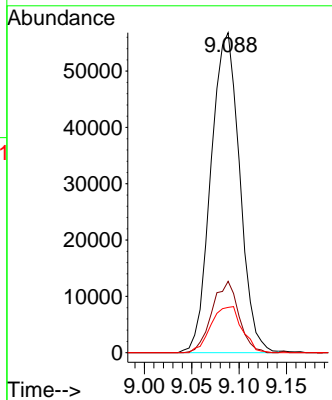
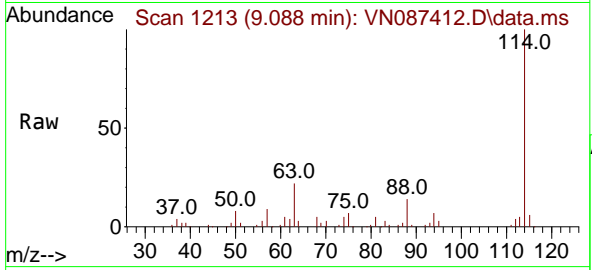


#28
 1,4-Difluorobenzene
 Concen: 30.000 ug/l
 RT: 9.088 min Scan# 11
 Delta R.T. 0.006 min
 Lab File: VN087412.D
 Acq: 24 Jul 2025 12:46

Instrument : MSVOA_N
 ClientSampleId : IBLK

Tgt Ion:114 Resp: 119739

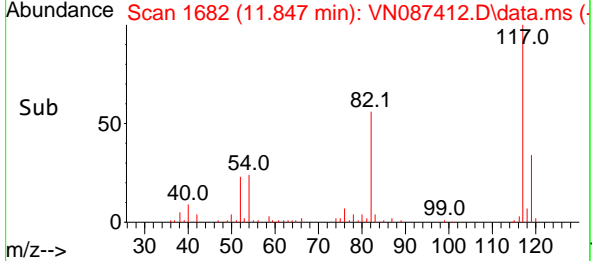
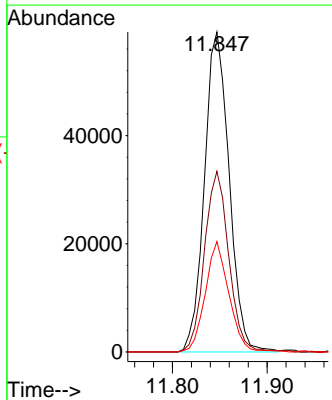
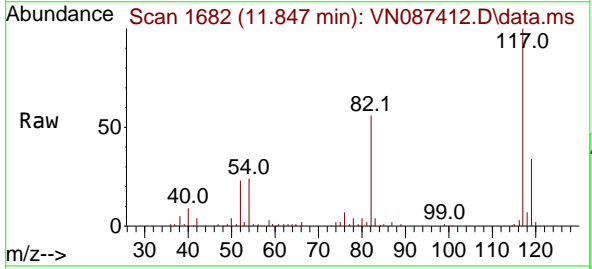
Ion	Ratio	Lower	Upper
114	100		
63	20.8	16.8	25.2
88	15.5	12.5	18.7

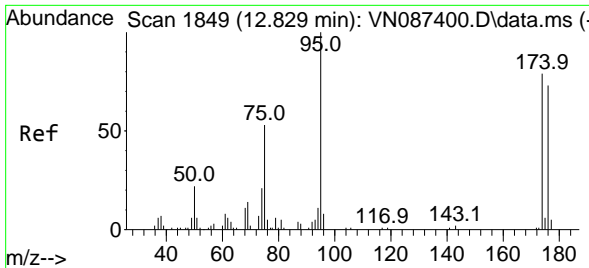


#57
 Chlorobenzene-d5
 Concen: 30.000 ug/l
 RT: 11.847 min Scan# 1682
 Delta R.T. -0.000 min
 Lab File: VN087412.D
 Acq: 24 Jul 2025 12:46

Tgt Ion:117 Resp: 107502

Ion	Ratio	Lower	Upper
117	100		
82	55.2	44.1	66.1
119	32.7	25.4	38.2

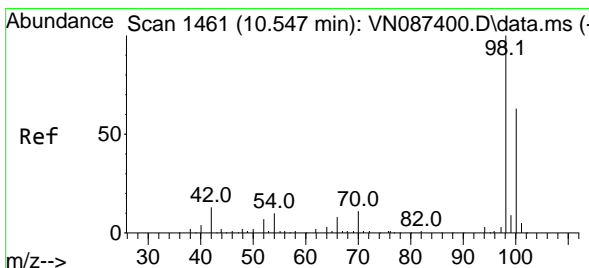
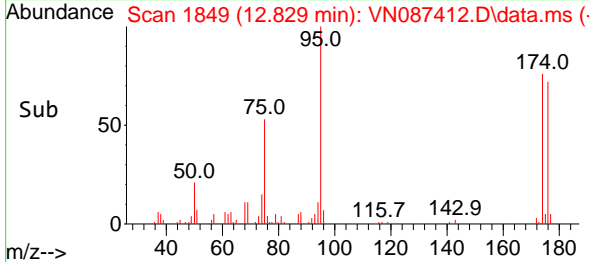
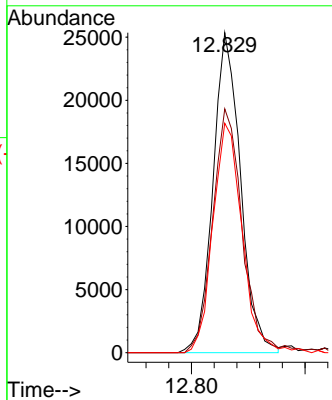
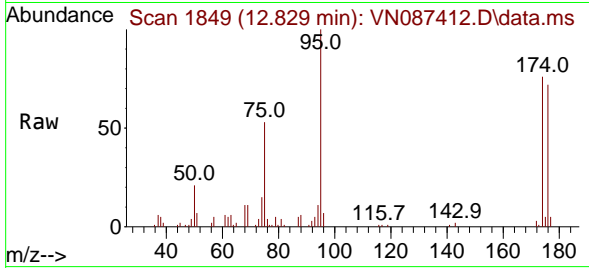




#60
 4-Bromofluorobenzene
 Concen: 23.805 ug/l
 RT: 12.829 min Scan# 1849
 Delta R.T. -0.000 min
 Lab File: VN087412.D
 Acq: 24 Jul 2025 12:46

Instrument : MSVOA_N
 ClientSampleId : IBLK

Tgt Ion	Resp	Lower	Upper
95	42695	100	
174	80.8	62.1	93.1
176	75.9	57.9	86.9



#63
 Toluene-d8
 Concen: 29.051 ug/l
 RT: 10.547 min Scan# 1461
 Delta R.T. -0.000 min
 Lab File: VN087412.D
 Acq: 24 Jul 2025 12:46

Tgt Ion	Resp	Lower	Upper
98	142025	100	
100	66.1	51.1	76.7

