

Data Path : Z:\voasrv\HPCHEM1\MSVOA_N\Data\VN072425\
 Data File : VN087413.D
 Acq On : 24 Jul 2025 13:07
 Operator : JC\MD
 Sample : Q2683-07
 Misc : 5.0mL/MSVOA_N/WATER
 ALS Vial : 9 Sample Multiplier: 1

Instrument :
 MSVOA_N
ClientSampleId :
 DSN003

Quant Time: Jul 25 04:53:34 2025
 Quant Method : Z:\voasrv\HPCHEM1\MSVOA_N\methods\624N072325W.M
 Quant Title : METHOD 624 VOLATILE ORGANIC ANALYSIS
 QLast Update : Thu Jul 24 05:11:26 2025
 Response via : Initial Calibration

Manual Integrations
APPROVED
 Reviewed By :John Carlone 07/25/2025
 Supervised By :Mahesh Dadoda 07/25/2025

Compound	R.T.	QIon	Response	Conc	Units	Dev(Min)

Internal Standards						
1) Bromochloromethane	7.794	128	22666	30.000	ug/l	0.00
28) 1,4-Difluorobenzene	9.083	114	99147	30.000	ug/l	0.00
57) Chlorobenzene-d5	11.847	117	92360	30.000	ug/l	0.00
System Monitoring Compounds						
27) 1,2-Dichloroethane-d4	8.559	65	52332	27.995	ug/l	0.00
Spiked Amount	30.000	Range 91 - 110	Recovery	=	93.333%	
60) 4-Bromofluorobenzene	12.829	95	34799	22.584	ug/l	0.00
Spiked Amount	30.000	Range 63 - 112	Recovery	=	75.267%	
63) Toluene-d8	10.547	98	116152	27.654	ug/l	0.00
Spiked Amount	30.000	Range 91 - 112	Recovery	=	92.167%	
Target Compounds						
15) Acetone	4.424	58	7075m	23.748	ug/l	Qvalue
25) Chloroform	7.953	83	5227	1.816	ug/l #	75
30) 2-Butanone	7.471	43	3180m	2.760	ug/l	
87) 1,2-Dichlorobenzene	14.082	146	4273	1.486	ug/l	99

(#) = qualifier out of range (m) = manual integration (+) = signals summed

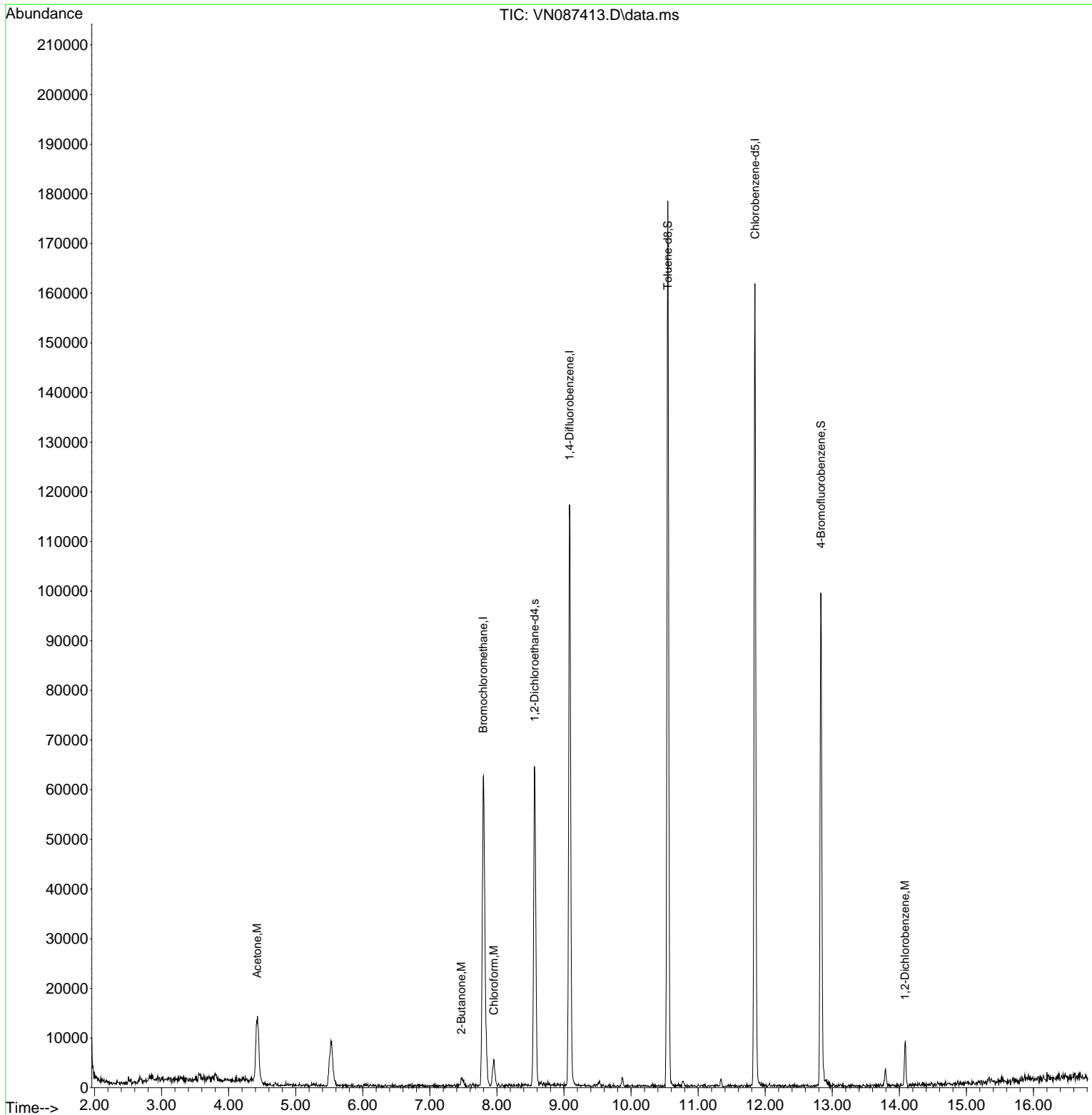
Data Path : Z:\voasrv\HPCHEM1\MSVOA_N\Data\VN072425\
 Data File : VN087413.D
 Acq On : 24 Jul 2025 13:07
 Operator : JC\MD
 Sample : Q2683-07
 Misc : 5.0mL/MSVOA_N/WATER
 ALS Vial : 9 Sample Multiplier: 1

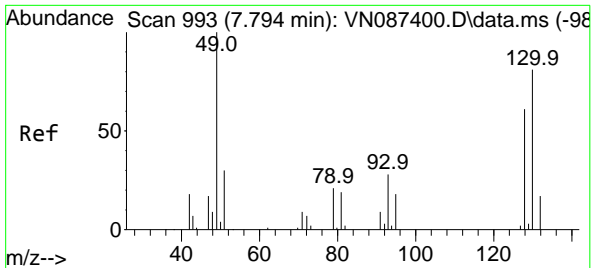
Instrument :
 MSVOA_N
 ClientSampleId :
 DSN003

Manual Integrations
 APPROVED

Reviewed By :John Carlone 07/25/2025
 Supervised By :Mahesh Dadoda 07/25/2025

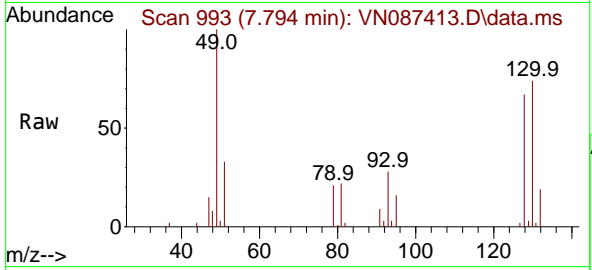
Quant Time: Jul 25 04:53:34 2025
 Quant Method : Z:\voasrv\HPCHEM1\MSVOA_N\methods\624N072325W.M
 Quant Title : METHOD 624 VOLATILE ORGANIC ANALYSIS
 QLast Update : Thu Jul 24 05:11:26 2025
 Response via : Initial Calibration





#1
 Bromochloromethane
 Concen: 30.000 ug/l
 RT: 7.794 min Scan# 993
 Delta R.T. 0.000 min
 Lab File: VN087413.D
 Acq: 24 Jul 2025 13:07

Instrument : MSVOA_N
 ClientSampleId : DSN003

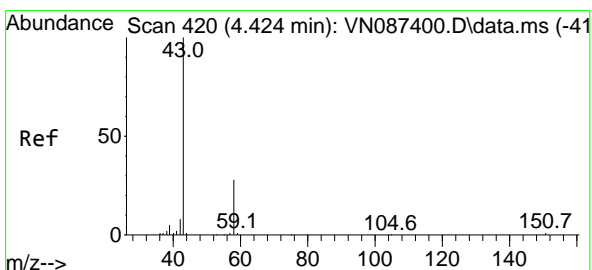
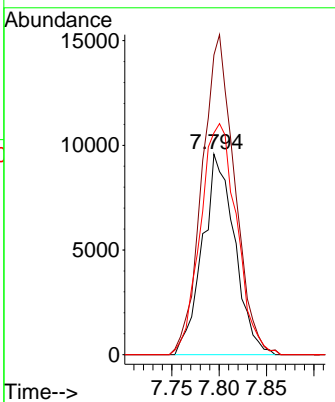
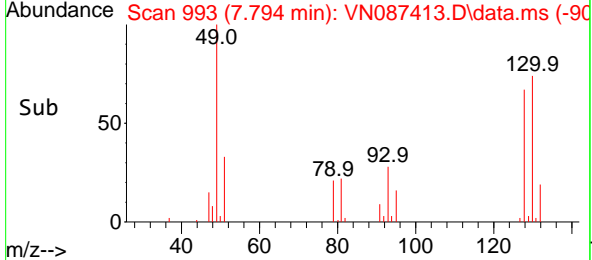


Tgt Ion: 128 Resp: 22660

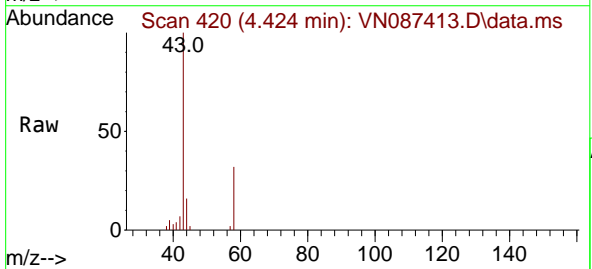
Ion	Ratio	Lower	Upper
128	100		
49	161.3	0.0	446.2
130	130.0	0.0	331.0

Manual Integrations
APPROVED

Reviewed By : John Carlone 07/25/2025
 Supervised By : Mahesh Dadoda 07/25/2025

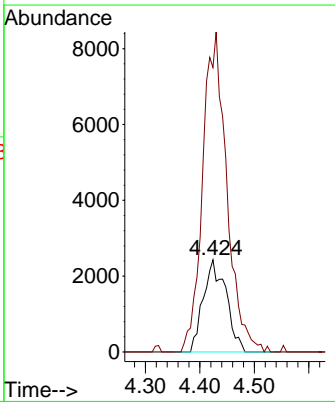
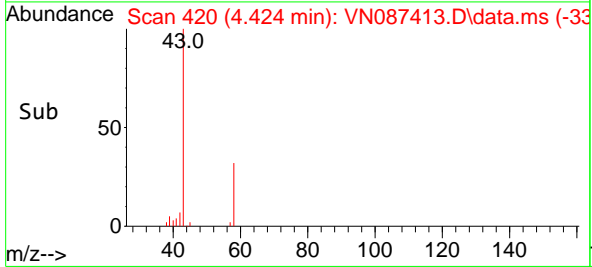


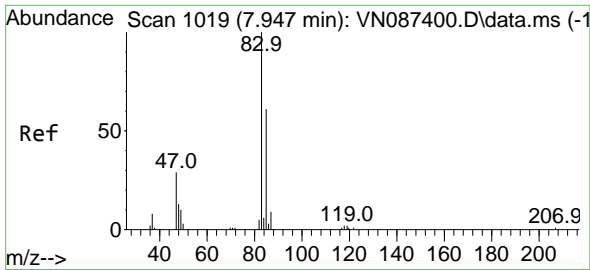
#15
 Acetone
 Concen: 23.748 ug/l m
 RT: 4.424 min Scan# 420
 Delta R.T. 0.000 min
 Lab File: VN087413.D
 Acq: 24 Jul 2025 13:07



Tgt Ion: 58 Resp: 7075

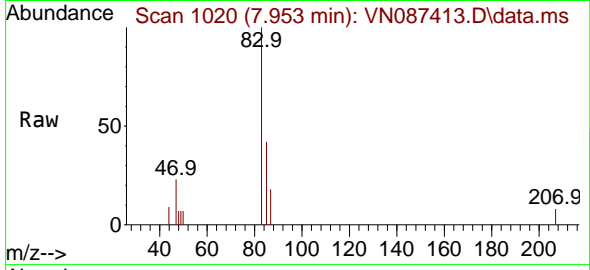
Ion	Ratio	Lower	Upper
58	100		
43	308.8	283.4	425.0





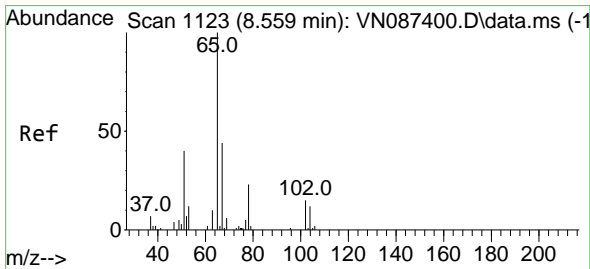
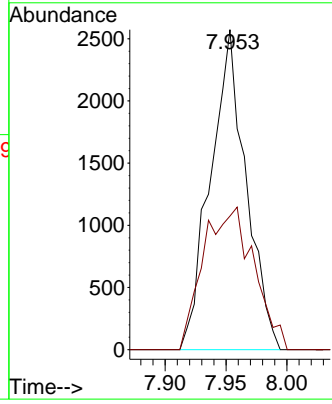
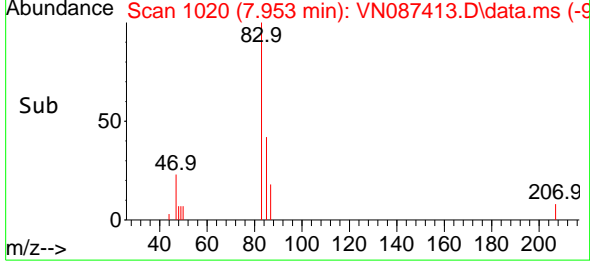
#25
 Chloroform
 Concen: 1.816 ug/l
 RT: 7.953 min Scan# 1019
 Delta R.T. 0.006 min
 Lab File: VN087413.D
 Acq: 24 Jul 2025 13:07

Instrument : MSVOA_N
 Client Sample Id : DSN003

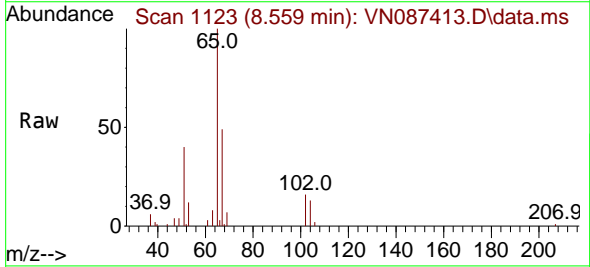


Tgt Ion: 83 Resp: 5220
 Ion Ratio Lower Upper
 83 100
 85 41.7 48.6 73.0

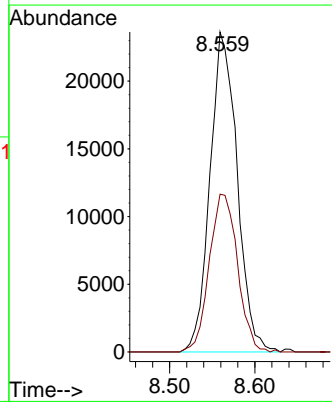
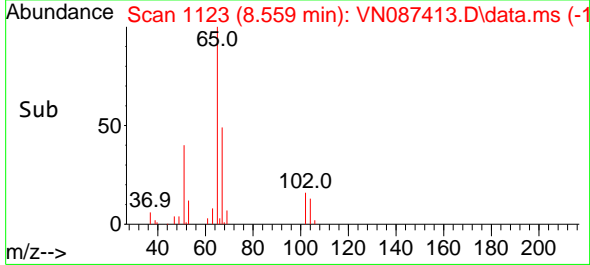
Manual Integrations
APPROVED
 Reviewed By : John Carlone 07/25/2025
 Supervised By : Mahesh Dadoda 07/25/2025

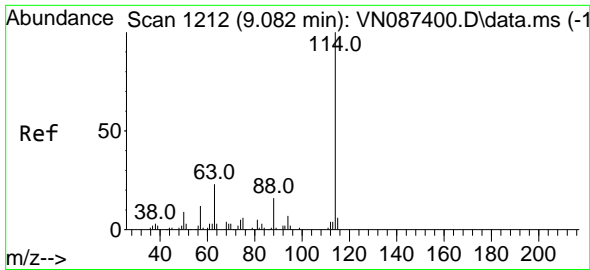


#27
 1,2-Dichloroethane-d4
 Concen: 27.995 ug/l
 RT: 8.559 min Scan# 1123
 Delta R.T. 0.000 min
 Lab File: VN087413.D
 Acq: 24 Jul 2025 13:07



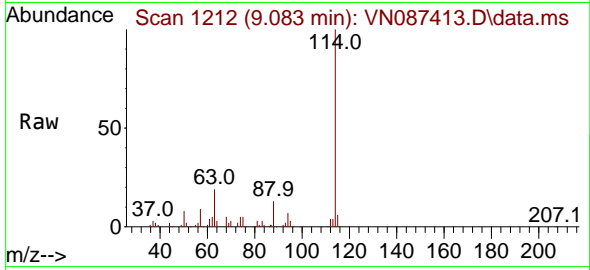
Tgt Ion: 65 Resp: 52332
 Ion Ratio Lower Upper
 65 100
 67 51.2 40.2 60.4





#28
 1,4-Difluorobenzene
 Concen: 30.000 ug/l
 RT: 9.083 min Scan# 1114
 Delta R.T. 0.000 min
 Lab File: VN087413.D
 Acq: 24 Jul 2025 13:07

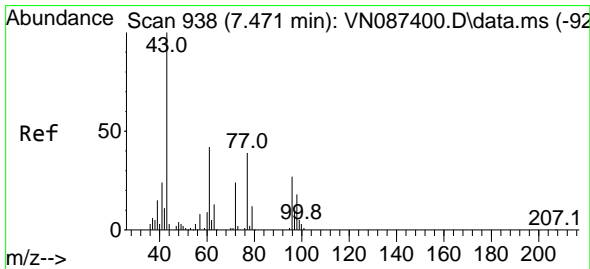
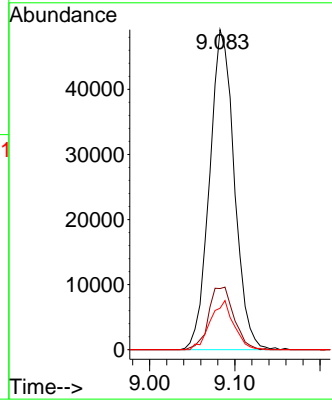
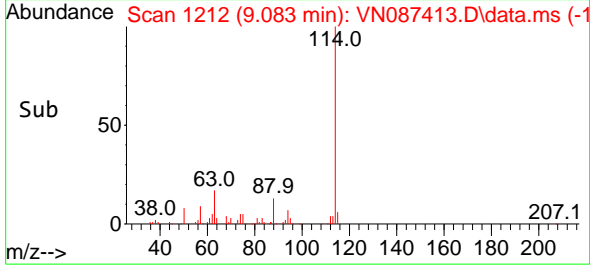
Instrument : MSVOA_N
 Client Sampled : DSN003



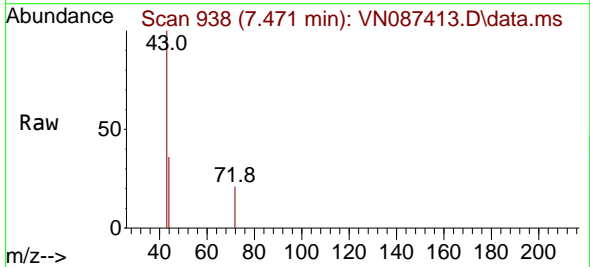
Tgt Ion: 114 Resp: 9914
 Ion Ratio Lower Upper
 114 100
 63 20.0 16.8 25.2
 88 14.5 12.5 18.7

Manual Integrations
 APPROVED

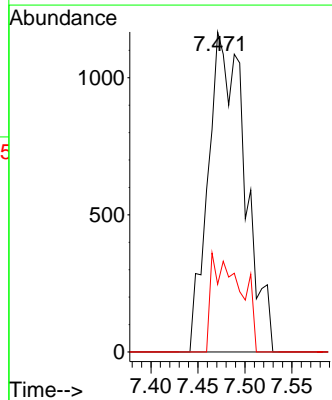
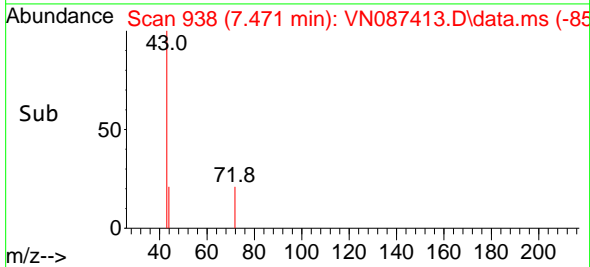
Reviewed By : John Carlone 07/25/2025
 Supervised By : Mahesh Dadoda 07/25/2025

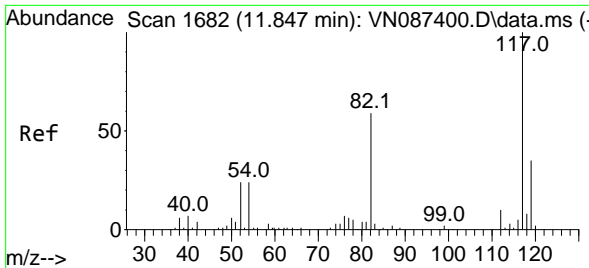


#30
 2-Butanone
 Concen: 2.760 ug/l m
 RT: 7.471 min Scan# 938
 Delta R.T. 0.000 min
 Lab File: VN087413.D
 Acq: 24 Jul 2025 13:07



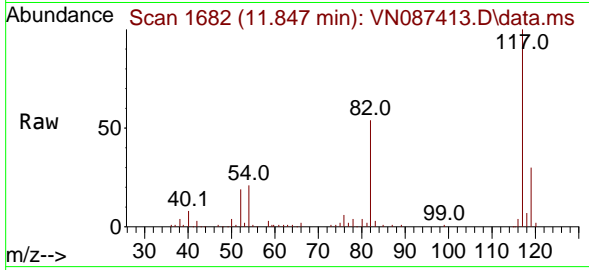
Tgt Ion: 43 Resp: 3180
 Ion Ratio Lower Upper
 43 100
 57 0.0 6.6 9.8#
 72 6.8 20.6 30.8#





#57
 Chlorobenzene-d5
 Concen: 30.000 ug/l
 RT: 11.847 min Scan# 117
 Delta R.T. 0.000 min
 Lab File: VN087413.D
 Acq: 24 Jul 2025 13:07

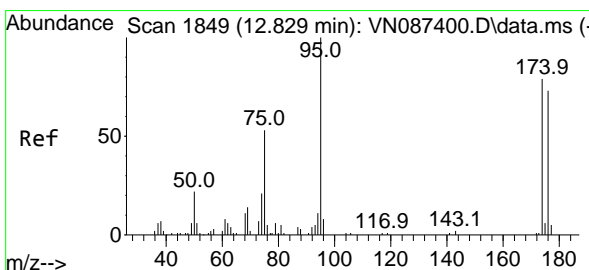
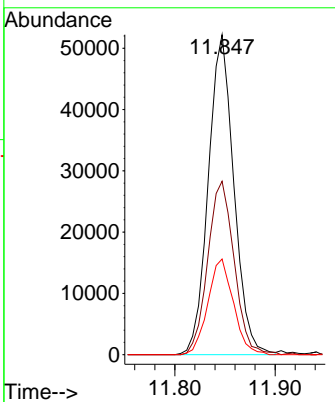
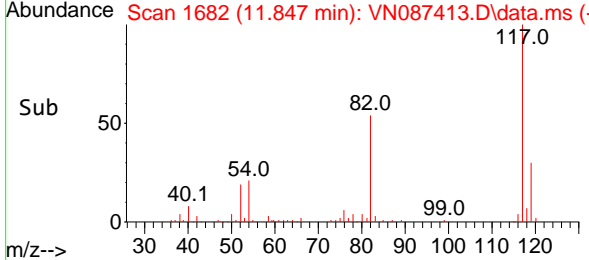
Instrument : MSVOA_N
 ClientSampleId : DSN003



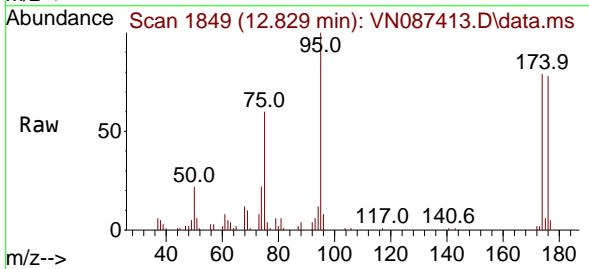
Tgt Ion: 117 Resp: 92360

Ion	Ratio	Lower	Upper
117	100		
82	55.8	44.1	66.1
119	29.9	25.4	38.2

Manual Integrations
APPROVED
 Reviewed By :John Carlone 07/25/2025
 Supervised By :Mahesh Dadoda 07/25/2025

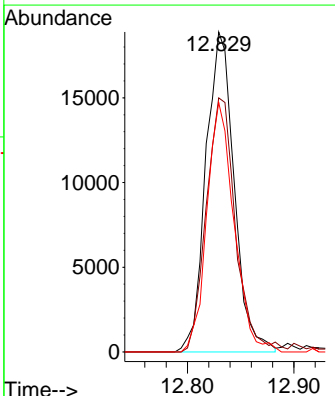
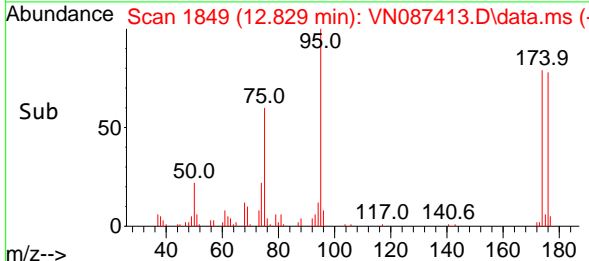


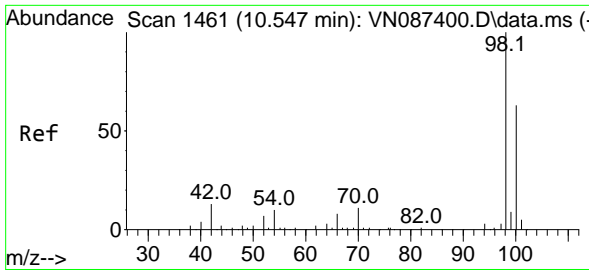
#60
 4-Bromofluorobenzene
 Concen: 22.584 ug/l
 RT: 12.829 min Scan# 1849
 Delta R.T. 0.000 min
 Lab File: VN087413.D
 Acq: 24 Jul 2025 13:07



Tgt Ion: 95 Resp: 34799

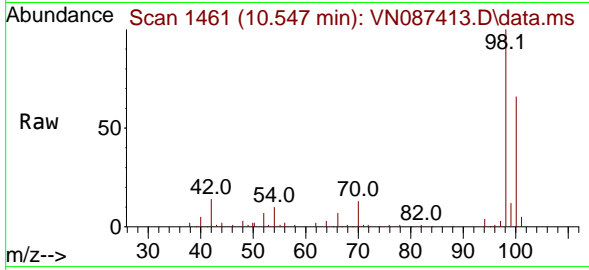
Ion	Ratio	Lower	Upper
95	100		
174	81.2	62.1	93.1
176	74.5	57.9	86.9





#63
 Toluene-d8
 Concen: 27.654 ug/l
 RT: 10.547 min Scan# 1461
 Delta R.T. 0.000 min
 Lab File: VN087413.D
 Acq: 24 Jul 2025 13:07

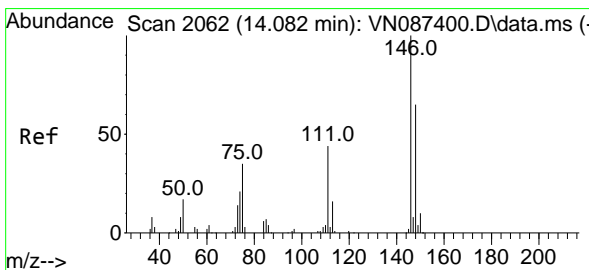
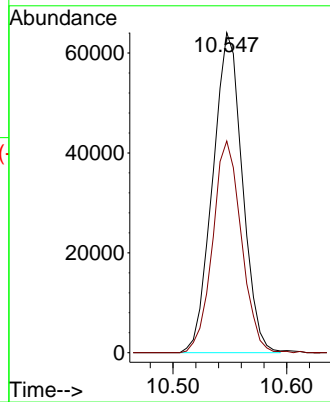
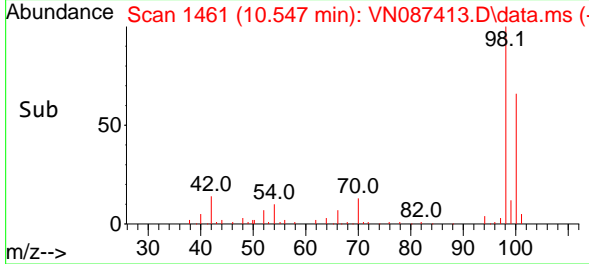
Instrument : MSVOA_N
 ClientSampleId : DSN003



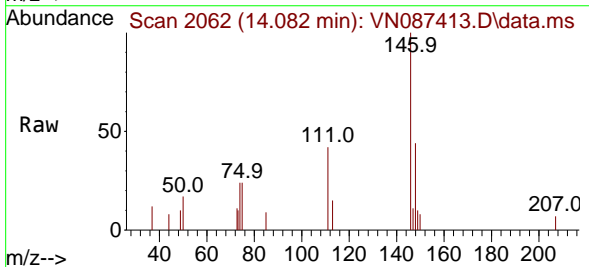
Tgt Ion: 98 Resp: 11615
 Ion Ratio Lower Upper
 98 100
 100 64.0 51.1 76.7

Manual Integrations
 APPROVED

Reviewed By :John Carlone 07/25/2025
 Supervised By :Mahesh Dadoda 07/25/2025



#87
 1,2-Dichlorobenzene
 Concen: 1.486 ug/l
 RT: 14.082 min Scan# 2062
 Delta R.T. 0.000 min
 Lab File: VN087413.D
 Acq: 24 Jul 2025 13:07



Tgt Ion:146 Resp: 4273
 Ion Ratio Lower Upper
 146 100
 111 41.8 21.9 65.8
 148 62.3 31.2 93.6

