

Data Path : Z:\voasrv\HPCHEM1\MSVOA_N\Data\VN072425\
 Data File : VN087414.D
 Acq On : 24 Jul 2025 13:28
 Operator : JC\MD
 Sample : Q2683-03
 Misc : 5.0mL/MSVOA_N/WATER
 ALS Vial : 10 Sample Multiplier: 1

Instrument :
 MSVOA_N
ClientSampleId :
 DSN001

Quant Time: Jul 25 04:53:55 2025
 Quant Method : Z:\voasrv\HPCHEM1\MSVOA_N\methods\624N072325W.M
 Quant Title : METHOD 624 VOLATILE ORGANIC ANALYSIS
 QLast Update : Thu Jul 24 05:11:26 2025
 Response via : Initial Calibration

Manual Integrations
APPROVED
 Reviewed By :John Carlone 07/25/2025
 Supervised By :Mahesh Dadoda 07/25/2025

Compound	R.T.	QIon	Response	Conc	Units	Dev(Min)

Internal Standards						
1) Bromochloromethane	7.800	128	25233	30.000	ug/l	0.00
28) 1,4-Difluorobenzene	9.088	114	113063	30.000	ug/l	0.00
57) Chlorobenzene-d5	11.847	117	102862	30.000	ug/l	0.00
System Monitoring Compounds						
27) 1,2-Dichloroethane-d4	8.565	65	61763	29.679	ug/l	0.00
Spiked Amount	30.000	Range 91 - 110	Recovery	=	98.933%	
60) 4-Bromofluorobenzene	12.829	95	40328	23.500	ug/l	0.00
Spiked Amount	30.000	Range 63 - 112	Recovery	=	78.333%	
63) Toluene-d8	10.547	98	135439	28.953	ug/l	0.00
Spiked Amount	30.000	Range 91 - 112	Recovery	=	96.500%	
Target Compounds						
25) Chloroform	7.947	83	3235m	1.009	ug/l	Qvalue
53) Dibromochloromethane	11.335	129	1916m	1.045	ug/l	

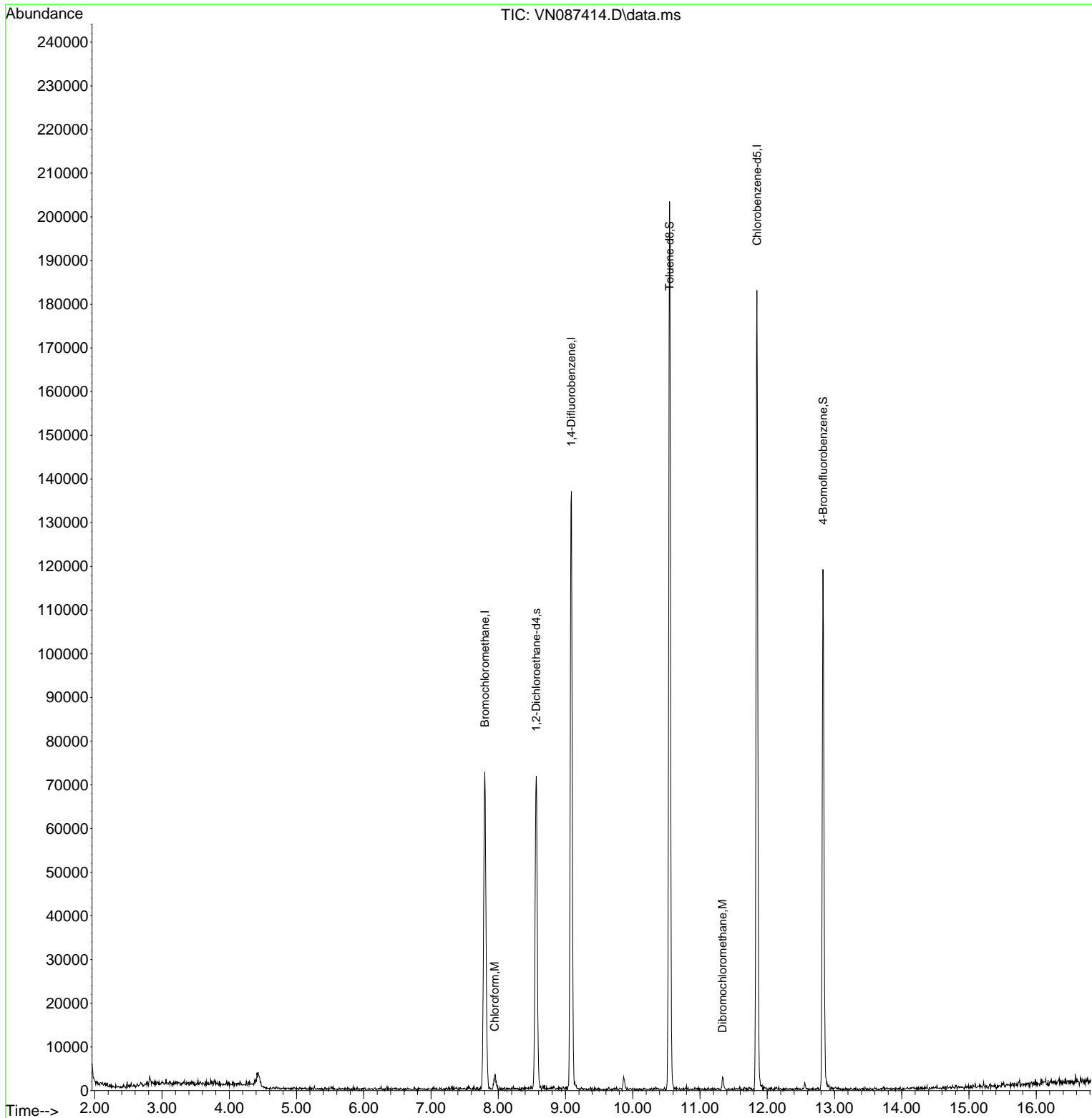
(#) = qualifier out of range (m) = manual integration (+) = signals summed

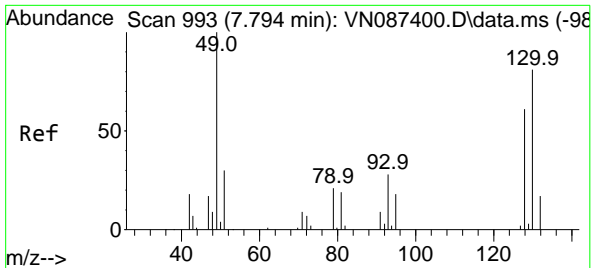
Data Path : Z:\voasrv\HPCHEM1\MSVOA_N\Data\VN072425\
 Data File : VN087414.D
 Acq On : 24 Jul 2025 13:28
 Operator : JC\MD
 Sample : Q2683-03
 Misc : 5.0mL/MSVOA_N/WATER
 ALS Vial : 10 Sample Multiplier: 1

Instrument :
 MSVOA_N
ClientSampleId :
 DSN001

Quant Time: Jul 25 04:53:55 2025
 Quant Method : Z:\voasrv\HPCHEM1\MSVOA_N\methods\624N072325W.M
 Quant Title : METHOD 624 VOLATILE ORGANIC ANALYSIS
 QLast Update : Thu Jul 24 05:11:26 2025
 Response via : Initial Calibration

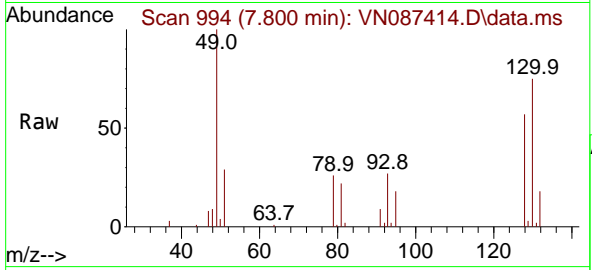
Manual Integrations
APPROVED
 Reviewed By : John Carlone 07/25/2025
 Supervised By : Mahesh Dadoda 07/25/2025





#1
 Bromochloromethane
 Concen: 30.000 ug/l
 RT: 7.800 min Scan# 993
 Delta R.T. 0.006 min
 Lab File: VN087414.D
 Acq: 24 Jul 2025 13:28

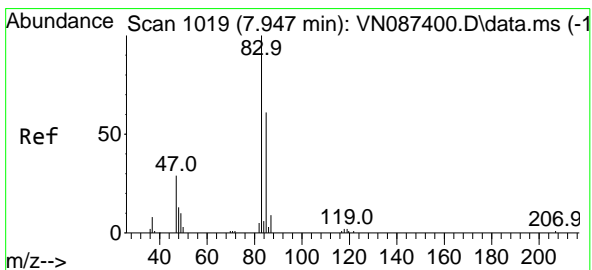
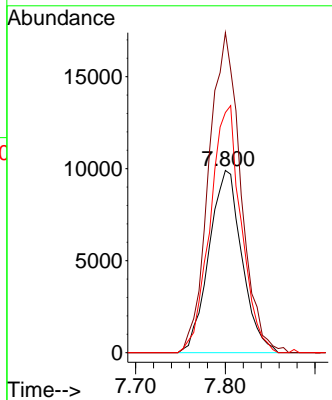
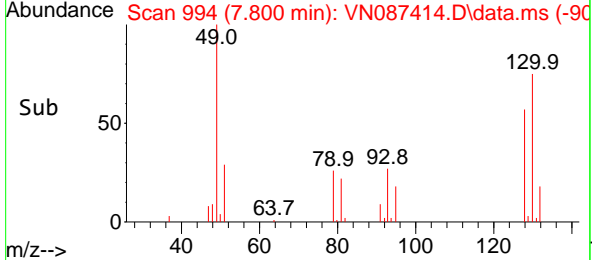
Instrument : MSVOA_N
 ClientSampleId : DSN001



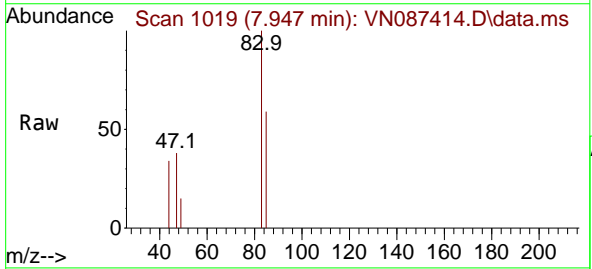
Tgt Ion:128 Resp: 2523
 Ion Ratio Lower Upper
 128 100
 49 170.6 0.0 446.2
 130 128.4 0.0 331.0

Manual Integrations
APPROVED

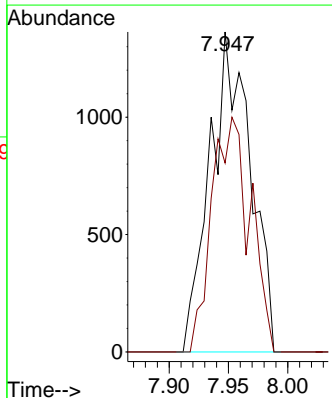
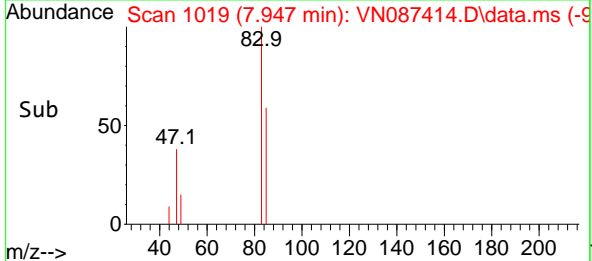
Reviewed By :John Carlone 07/25/2025
 Supervised By :Mahesh Dadoda 07/25/2025

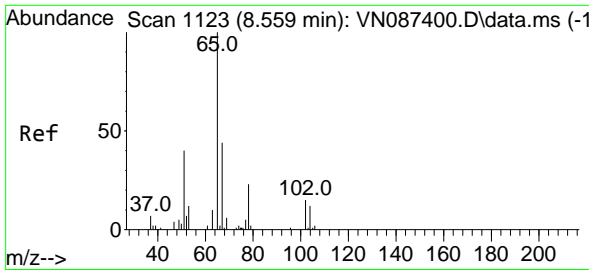


#25
 Chloroform
 Concen: 1.009 ug/l m
 RT: 7.947 min Scan# 1019
 Delta R.T. -0.000 min
 Lab File: VN087414.D
 Acq: 24 Jul 2025 13:28



Tgt Ion: 83 Resp: 3235
 Ion Ratio Lower Upper
 83 100
 85 59.1 48.6 73.0





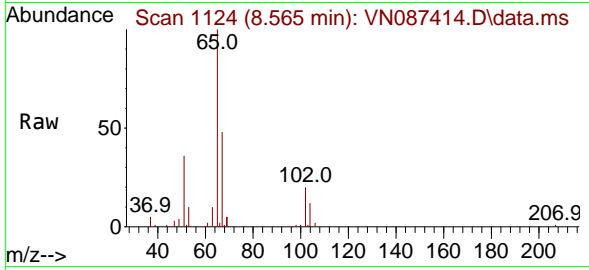
#27
 1,2-Dichloroethane-d4
 Concen: 29.679 ug/l
 RT: 8.565 min Scan# 1124
 Delta R.T. 0.006 min
 Lab File: VN087414.D
 Acq: 24 Jul 2025 13:28

Instrument :

MSVOA_N

ClientSampleId :

DSN001



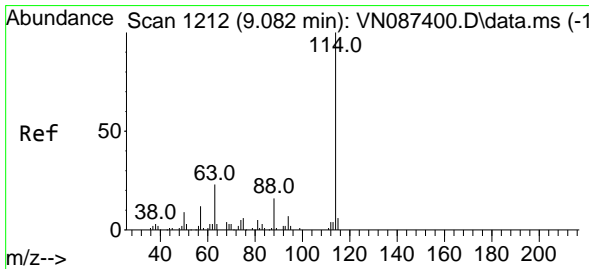
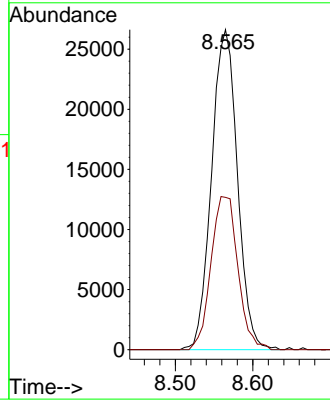
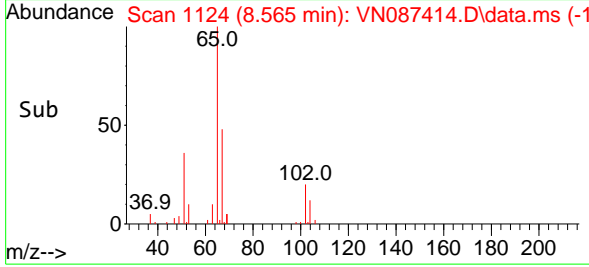
Tgt Ion: 65 Resp: 61763
 Ion Ratio Lower Upper
 65 100
 67 49.3 40.2 60.4

Manual Integrations

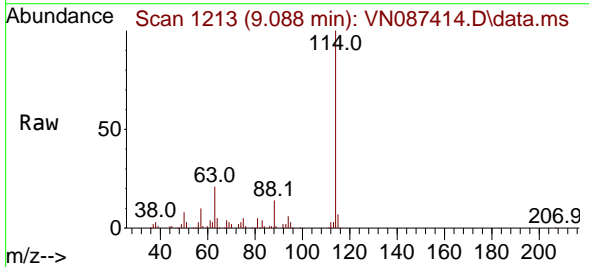
APPROVED

Reviewed By :John Carlone 07/25/2025

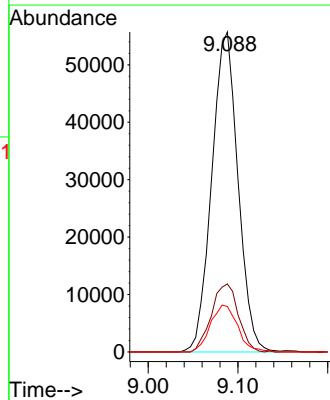
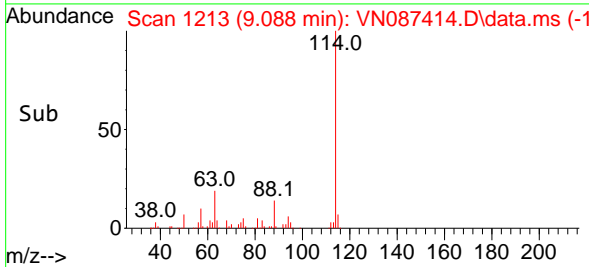
Supervised By :Mahesh Dadoda 07/25/2025

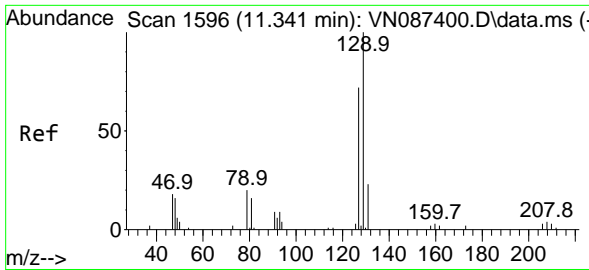


#28
 1,4-Difluorobenzene
 Concen: 30.000 ug/l
 RT: 9.088 min Scan# 1213
 Delta R.T. 0.006 min
 Lab File: VN087414.D
 Acq: 24 Jul 2025 13:28



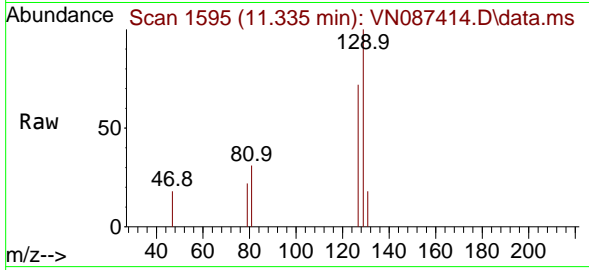
Tgt Ion:114 Resp: 113063
 Ion Ratio Lower Upper
 114 100
 63 21.8 16.8 25.2
 88 15.2 12.5 18.7





#53
 Dibromochloromethane
 Concen: 1.045 ug/l m
 RT: 11.335 min Scan# 1595
 Delta R.T. -0.006 min
 Lab File: VN087414.D
 Acq: 24 Jul 2025 13:28

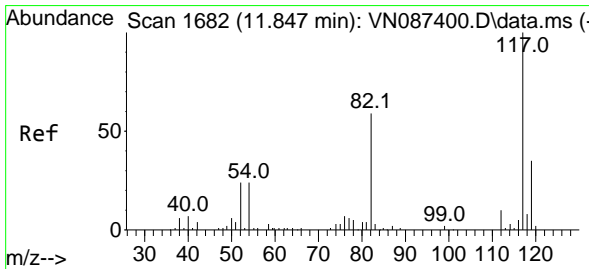
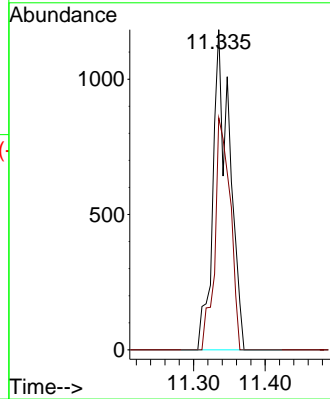
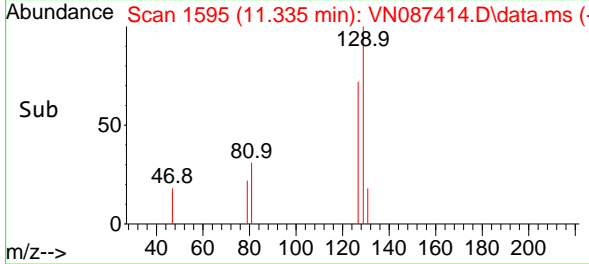
Instrument :
 MSVOA_N
 ClientSampleId :
 DSN001



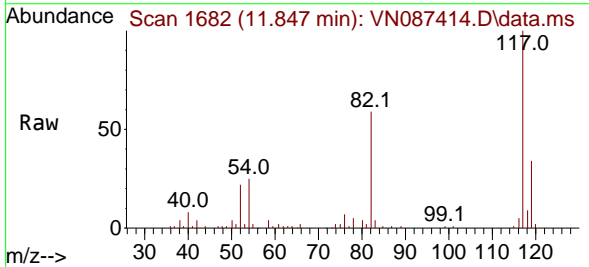
Tgt Ion:129 Resp: 1910
 Ion Ratio Lower Upper
 129 100
 127 66.5 38.7 116.1

Manual Integrations
APPROVED

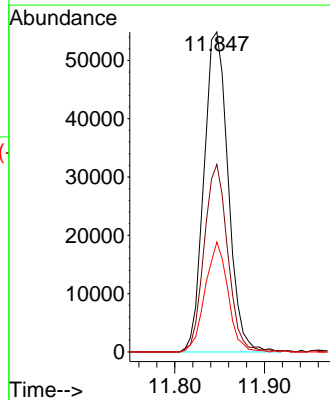
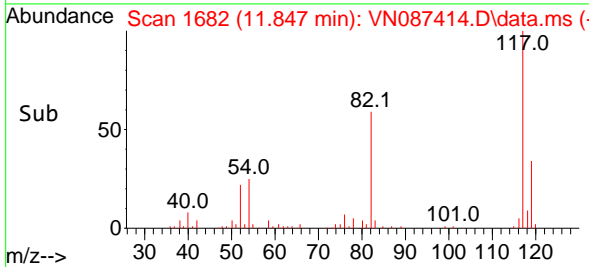
Reviewed By :John Carlone 07/25/2025
 Supervised By :Mahesh Dadoda 07/25/2025

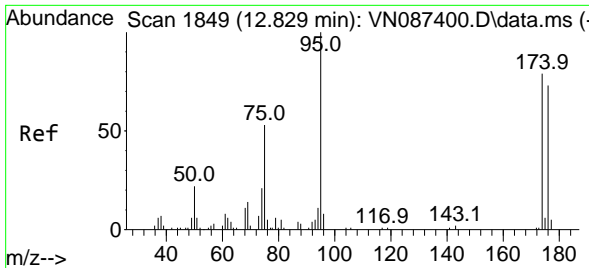


#57
 Chlorobenzene-d5
 Concen: 30.000 ug/l
 RT: 11.847 min Scan# 1682
 Delta R.T. -0.000 min
 Lab File: VN087414.D
 Acq: 24 Jul 2025 13:28



Tgt Ion:117 Resp: 102862
 Ion Ratio Lower Upper
 117 100
 82 57.0 44.1 66.1
 119 32.5 25.4 38.2





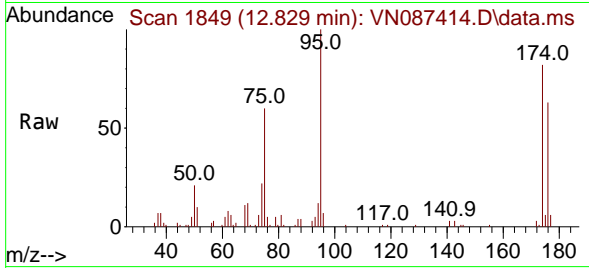
#60
 4-Bromofluorobenzene
 Concen: 23.500 ug/l
 RT: 12.829 min Scan# 1849
 Delta R.T. -0.000 min
 Lab File: VN087414.D
 Acq: 24 Jul 2025 13:28

Instrument :

MSVOA_N

ClientSampleId :

DSN001



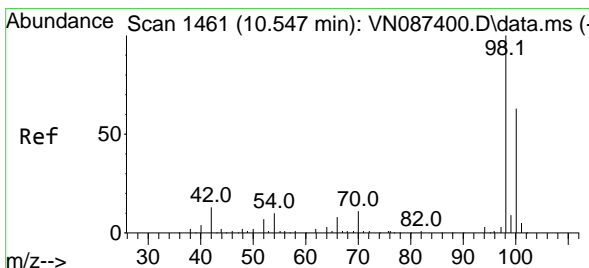
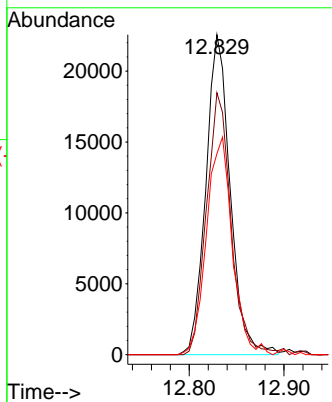
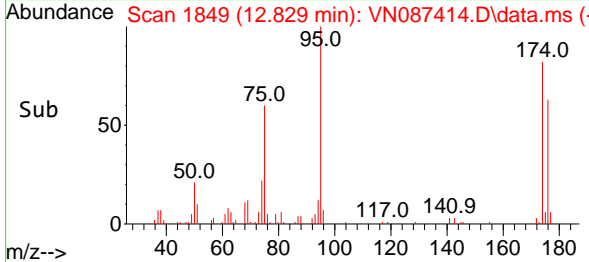
Tgt Ion: 95 Resp: 40328
 Ion Ratio Lower Upper
 95 100
 174 81.9 62.1 93.1
 176 70.9 57.9 86.9

Manual Integrations

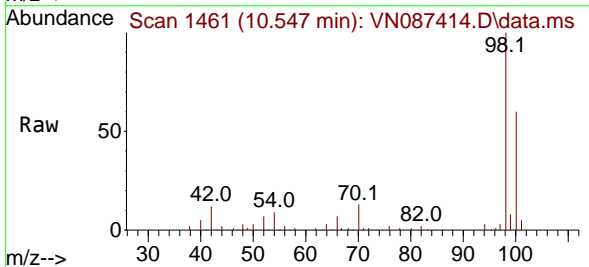
APPROVED

Reviewed By :John Carlone 07/25/2025

Supervised By :Mahesh Dadoda 07/25/2025



#63
 Toluene-d8
 Concen: 28.953 ug/l
 RT: 10.547 min Scan# 1461
 Delta R.T. -0.000 min
 Lab File: VN087414.D
 Acq: 24 Jul 2025 13:28



Tgt Ion: 98 Resp: 135439
 Ion Ratio Lower Upper
 98 100
 100 64.0 51.1 76.7

