

Data Path : Z:\VOASRV\HPCHEM1\MSVOA N\DATA\VN072518\  
 Data File : VN050055.D  
 Acq On : 25 Jul 2018 20:35  
 Operator : MD\SY  
 Sample : PB111424ZHE#02  
 Misc : 5.00mL/MSVOA N/WATER  
 ALS Vial : 23 Sample Multiplier: 1

Instrument :  
 MSVOA\_N  
 ClientSampleId :  
 PB111424ZHE#02

Quant Time: Jul 26 06:56:46 2018  
 Quant Method : Z:\VOASRV\HPCHEM1\MSVOA\_N\METHODS\82N072418W.M  
 Quant Title : SW846 8260  
 QLast Update : Tue Jul 24 06:27:04 2018  
 Response via : Initial Calibration

Internal Standards	R.T.	QIon	Response	Conc	Units	Dev(Min)
1) Pentafluorobenzene	7.67	168	621005	50.00	ug/l	0.00
34) 1,4-Difluorobenzene	8.59	114	1015872	50.00	ug/l	0.00
63) Chlorobenzene-d5	11.41	117	868808	50.00	ug/l	0.00
72) 1,4-Dichlorobenzene-d4	13.35	152	300376	50.00	ug/l	0.00

## System Monitoring Compounds

33) 1,2-Dichloroethane-d4	8.03	65	444367	51.29	ug/l	0.00
Spiked Amount	50.000		Recovery	=	102.58%	
35) Dibromofluoromethane	7.60	113	387055	46.67	ug/l	0.00
Spiked Amount	50.000		Recovery	=	93.34%	
50) Toluene-d8	10.09	98	1387330	45.50	ug/l	0.00
Spiked Amount	50.000		Recovery	=	91.00%	
62) 4-Bromofluorobenzene	12.41	95	373684	37.22	ug/l	0.00
Spiked Amount	50.000		Recovery	=	74.44%	

## Target Compounds

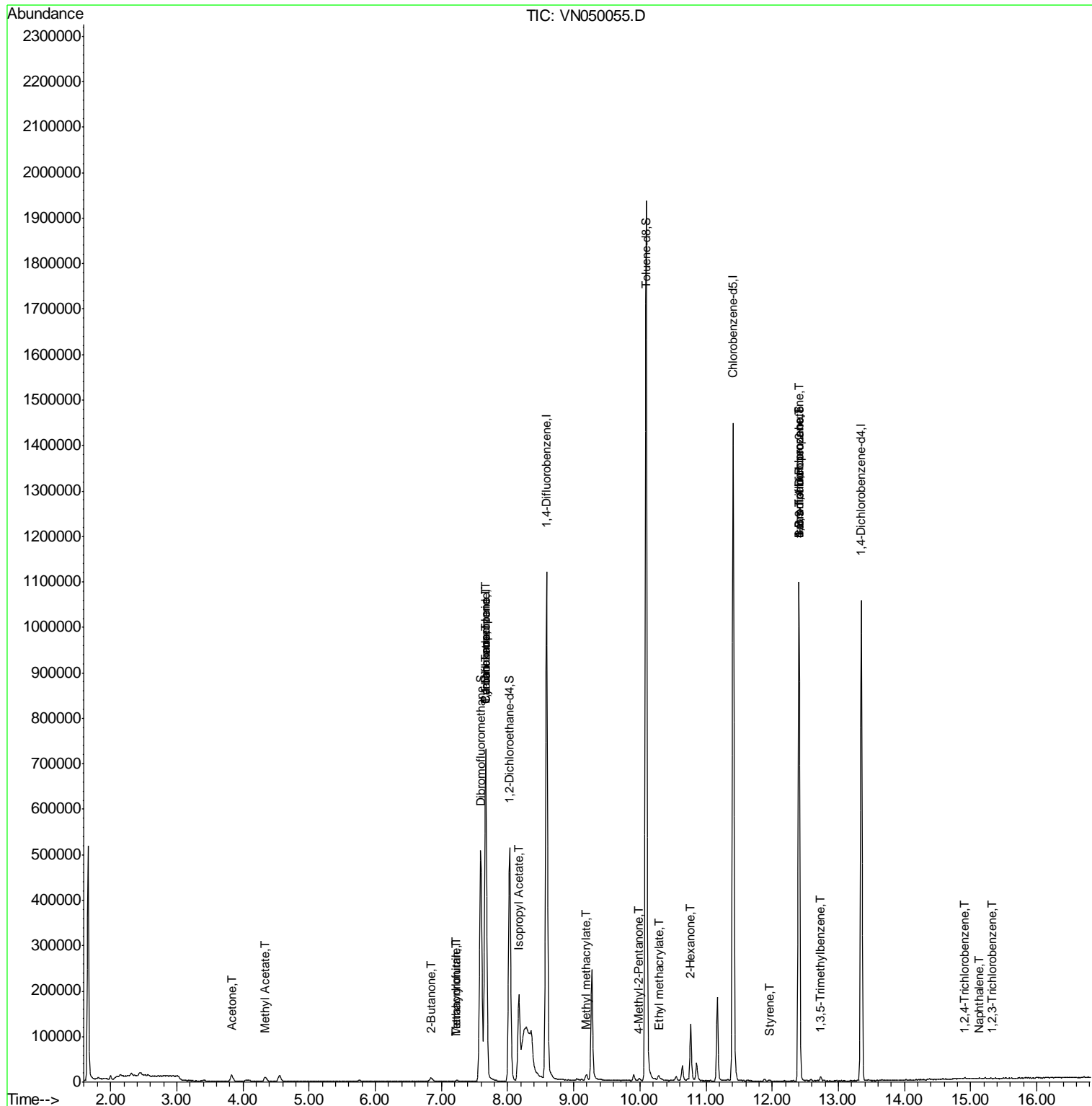
						Qvalue
5) Bromomethane	2.57	94	1220	Below Cal	#	57
16) Acetone	3.83	43	23646	7.37	ug/l	99
18) Methyl Acetate	4.33	43	16514	0.47	ug/l	97
25) 2-Butanone	6.85	43	7007	2.12	ug/l	# 81
29) Tetrahydrofuran	7.23	42	1076	0.50	ug/l	# 78
31) Cyclohexane	7.67	56	11820	0.92	ug/l	# 1
36) 1,1-Dichloropropene	7.67	75	43439	3.80	ug/l	# 48
38) Carbon Tetrachloride	7.67	117	55300	4.55	ug/l	# 17
41) Methacrylonitrile	7.20	41	266	2.81	ug/l	# 30
43) Isopropyl Acetate	8.17	43	231624	14.60	ug/l	97
48) Methyl methacrylate	9.19	41	8149	1.19	ug/l	# 20
51) 4-Methyl-2-Pentanone	9.99	43	4291	0.55	ug/l	# 76
56) Ethyl methacrylate	10.29	69	161	2.04	ug/l	# 1
59) 2-Hexanone	10.77	43	18093	8.25	ug/l	# 57
70) Styrene	11.97	104	327	0.94	ug/l	# 37
71) Bromoform	12.41	173	3366	0.55	ug/l	# 1
75) 1,1,2,2-Tetrachloroethane	12.51	83	64	Below Cal	#	25
76) 1,2,3-Trichloropropane	12.41	75	182212	32.64	ug/l	# 100
80) 1,3,5-Trimethylbenzene	12.73	105	4239	0.23	ug/l	83
81) trans-1,4-Dichloro-2-buten	12.41	75	182212	103.53	ug/l	# 13
92) 1,2-Dibromo-3-Chloropropan	14.28	75	108	Below Cal	#	1
93) 1,2,4-Trichlorobenzene	14.91	180	685	3.20	ug/l	# 85
95) Naphthalene	15.14	128	1616	4.52	ug/l	# 71
96) 1,2,3-Trichlorobenzene	15.32	180	586	2.30	ug/l	# 49

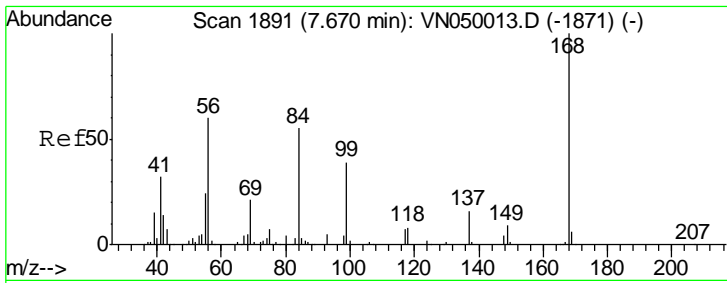
(#) = qualifier out of range (m) = manual integration (+) = signals summed

Data Path : Z:\VOASRV\HPCHEM1\MSVOA N\DATA\VN072518\  
 Data File : VN050055.D  
 Acq On : 25 Jul 2018 20:35  
 Operator : MD\SY  
 Sample : PB111424ZHE#02  
 Misc : 5.00mL/MSVOA N/WATER  
 ALS Vial : 23 Sample Multiplier: 1

Instrument :  
 MSVOA\_N  
 ClientSampleId :  
 PB111424ZHE#02

Quant Time: Jul 26 06:56:46 2018  
 Quant Method : Z:\VOASRV\HPCHEM1\MSVOA\_N\METHODS\82N072418W.M  
 Quant Title : SW846 8260  
 QLast Update : Tue Jul 24 06:27:04 2018  
 Response via : Initial Calibration

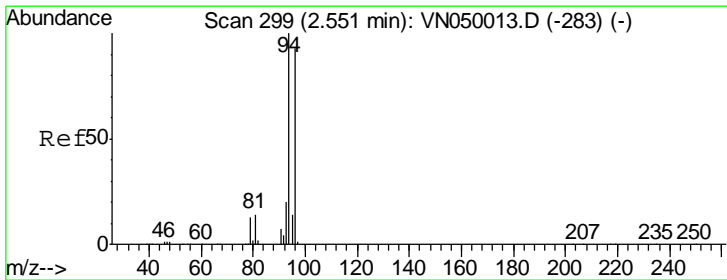
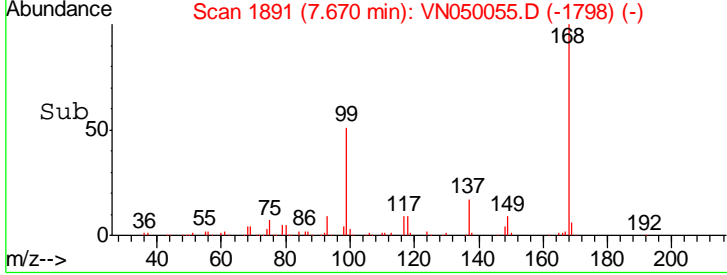
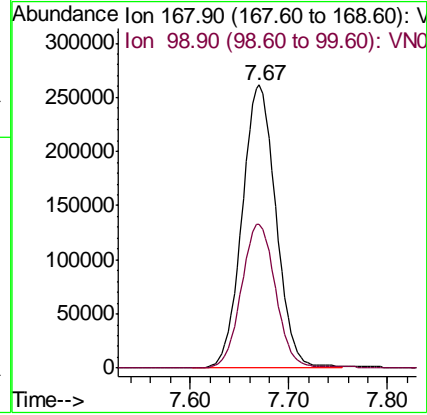
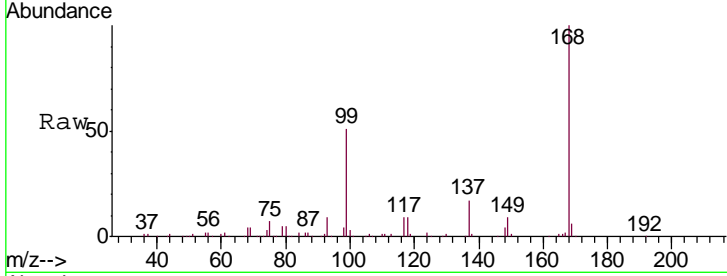




#1  
 Pentafluorobenzene  
 Concen: 50.00 ug/l  
 RT: 7.67 min Scan# 1891  
 Delta R.T. 0.00 min  
 Lab File: VN050055.D  
 Acq: 25 Jul 2018 20:35

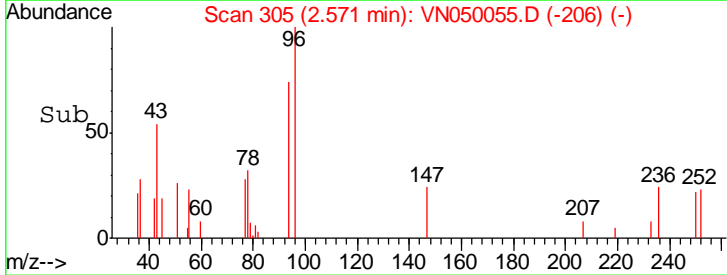
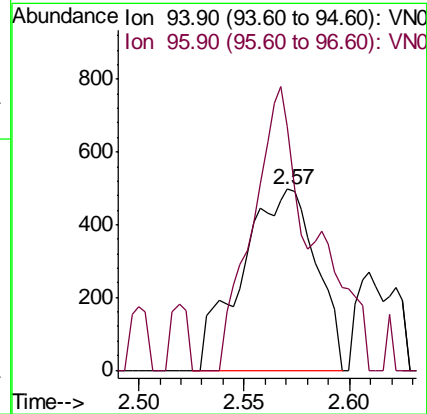
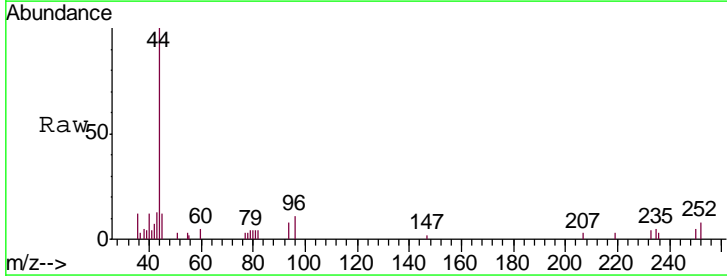
Instrument : MSVOA\_N  
 ClientSampleId : PB111424ZHE#02

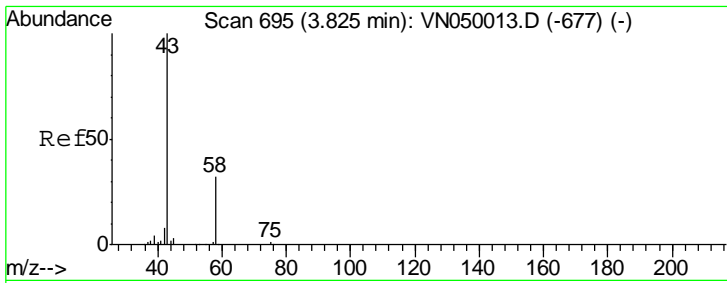
Tgt Ion: 168 Resp: 621005  
 Ion Ratio Lower Upper  
 168 100  
 99 50.8 40.0 60.0



#5  
 Bromomethane  
 Concen: Below Cal  
 RT: 2.57 min Scan# 305  
 Delta R.T. 0.02 min  
 Lab File: VN050055.D  
 Acq: 25 Jul 2018 20:35

Tgt Ion: 94 Resp: 1220  
 Ion Ratio Lower Upper  
 94 100  
 96 134.9 74.6 112.0#

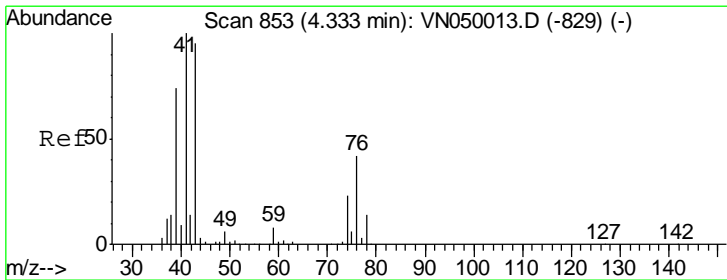
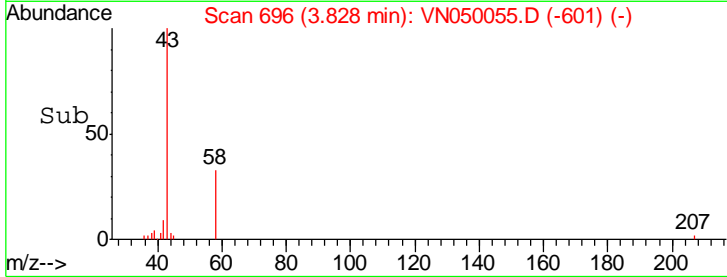
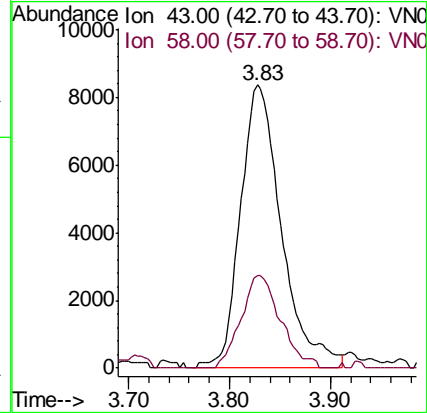
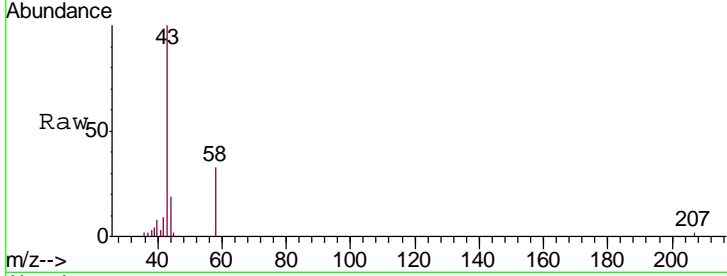




#16  
 Acetone  
 Concen: 7.37 ug/l  
 RT: 3.83 min Scan# 696  
 Delta R.T. 0.00 min  
 Lab File: VN050055.D  
 Acq: 25 Jul 2018 20:35

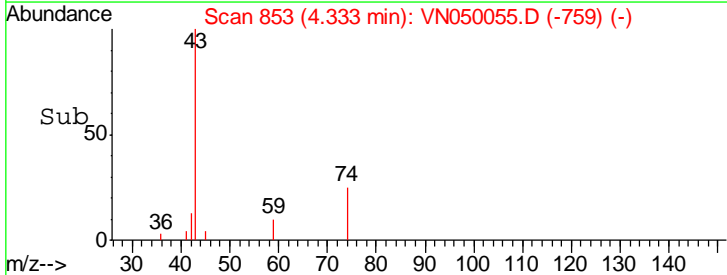
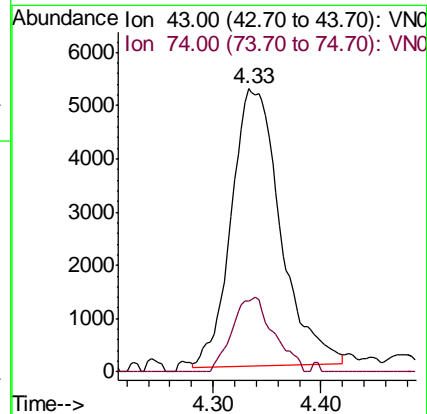
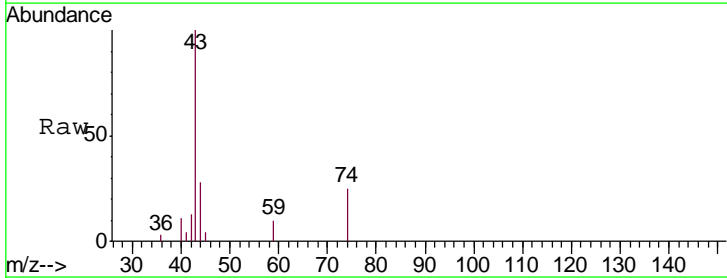
Instrument :  
 MSVOA\_N  
 ClientSampleId :  
 PB111424ZHE#02

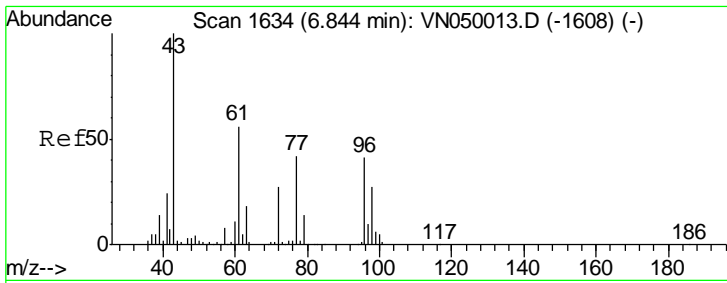
Tgt Ion: 43 Resp: 23646  
 Ion Ratio Lower Upper  
 43 100  
 58 32.9 25.8 38.8



#18  
 Methyl Acetate  
 Concen: 0.47 ug/l  
 RT: 4.33 min Scan# 853  
 Delta R.T. 0.00 min  
 Lab File: VN050055.D  
 Acq: 25 Jul 2018 20:35

Tgt Ion: 43 Resp: 16514  
 Ion Ratio Lower Upper  
 43 100  
 74 22.7 19.2 28.8

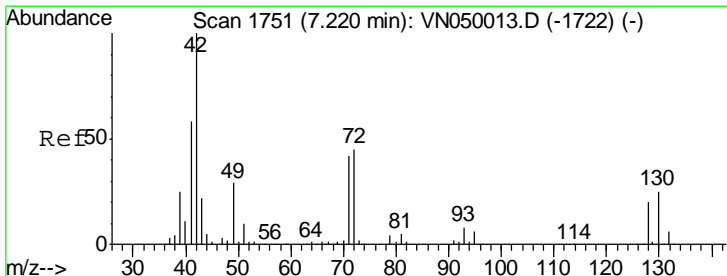
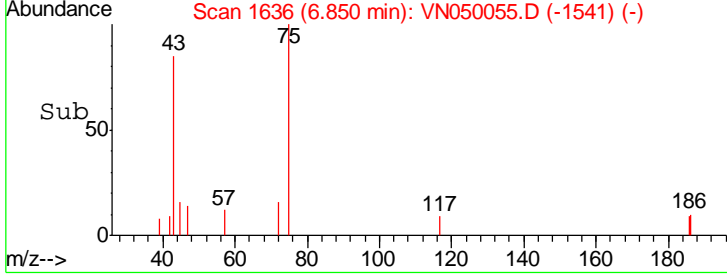
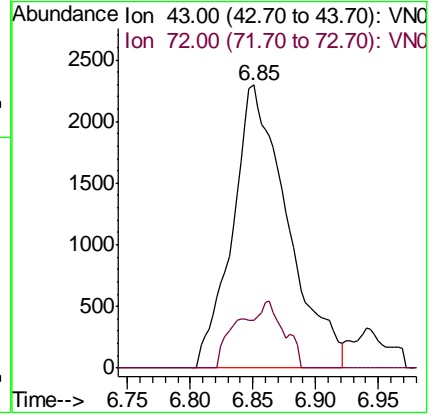
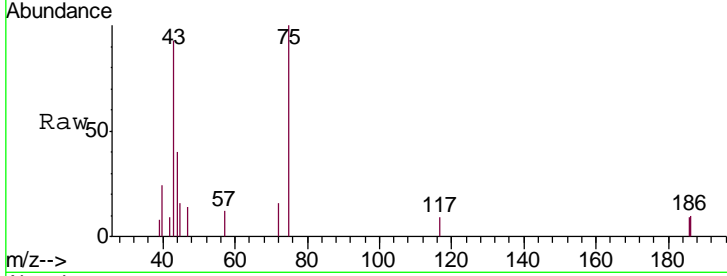




#25  
 2-Butanone  
 Concen: 2.12 ug/l  
 RT: 6.85 min Scan# 1636  
 Delta R.T. 0.01 min  
 Lab File: VN050055.D  
 Acq: 25 Jul 2018 20:35

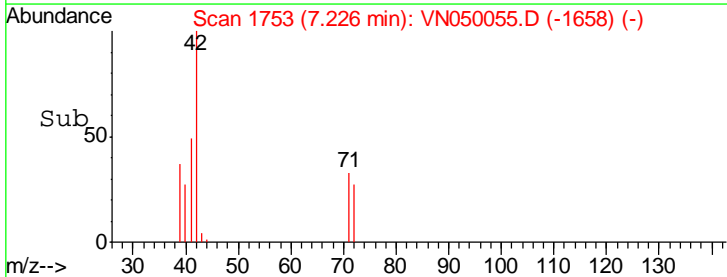
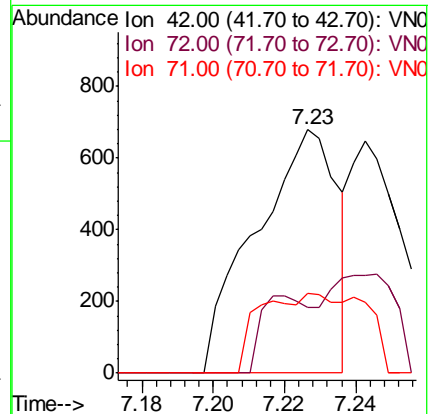
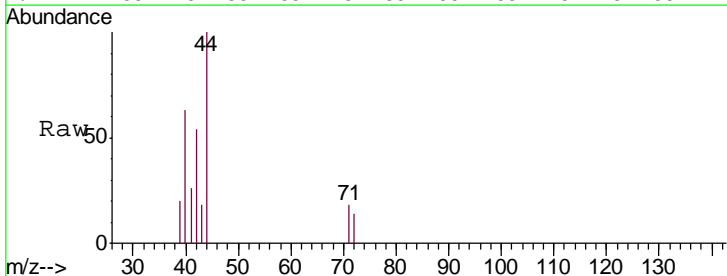
Instrument : MSVOA\_N  
 ClientSampled : PB111424ZHE#02

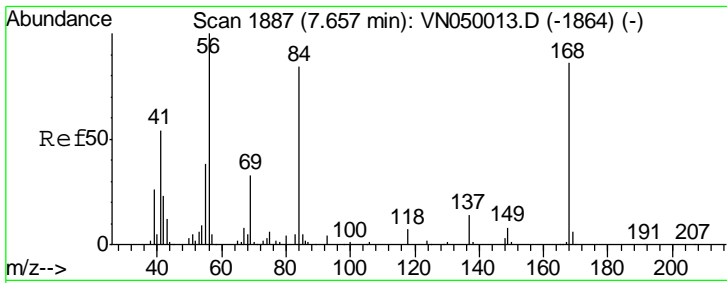
Tgt Ion: 43 Resp: 7007  
 Ion Ratio Lower Upper  
 43 100  
 72 16.8 21.5 32.3#



#29  
 Tetrahydrofuran  
 Concen: 0.50 ug/l  
 RT: 7.23 min Scan# 1753  
 Delta R.T. 0.01 min  
 Lab File: VN050055.D  
 Acq: 25 Jul 2018 20:35

Tgt Ion: 42 Resp: 1076  
 Ion Ratio Lower Upper  
 42 100  
 72 17.8 35.9 53.9#  
 71 42.3 33.7 50.5

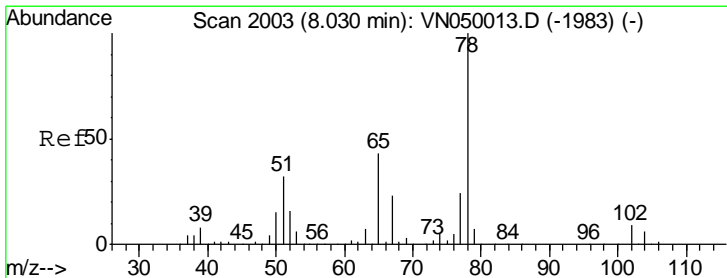
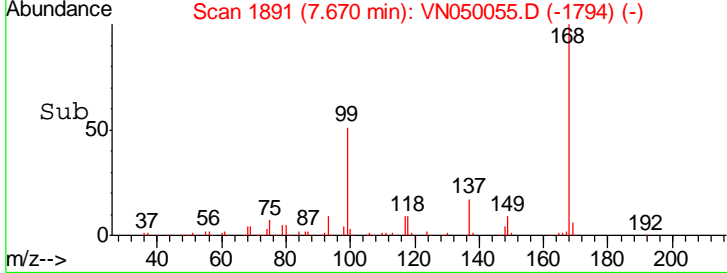
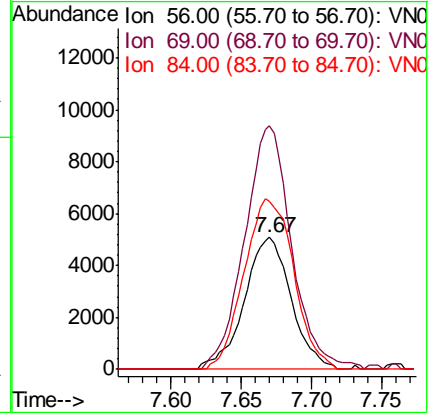
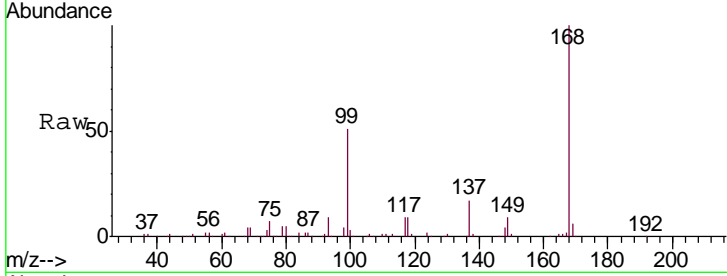




#31  
 Cyclohexane  
 Concen: 0.92 ug/l  
 RT: 7.67 min Scan# 1891  
 Delta R.T. 0.01 min  
 Lab File: VN050055.D  
 Acq: 25 Jul 2018 20:35

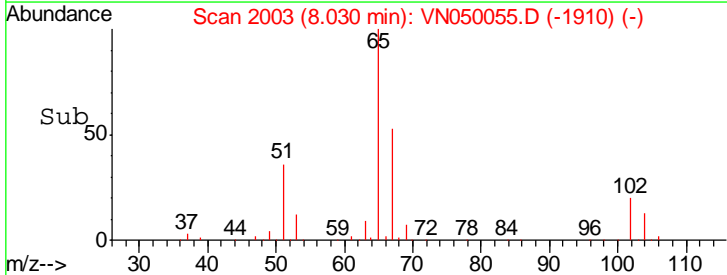
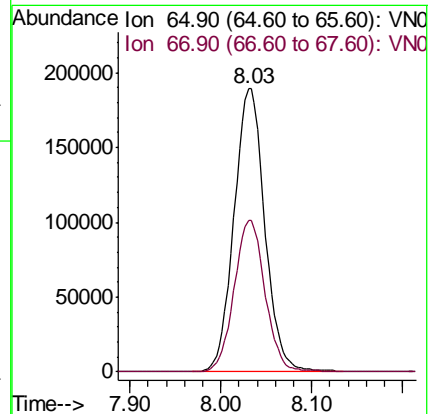
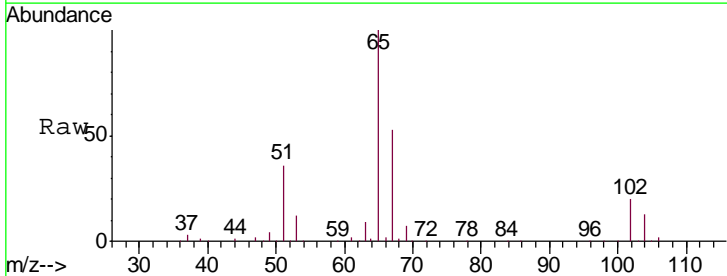
Instrument : MSVOA\_N  
 ClientSampled : PB111424ZHE#02

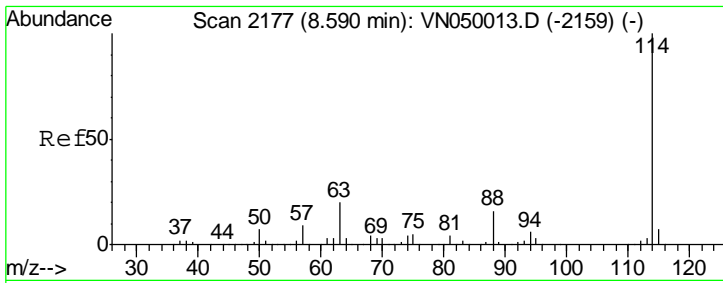
Tgt Ion	Resp	Lower	Upper
56	11820		
69	184.8	26.2	39.4#
84	127.2	67.4	101.0#



#33  
 1,2-Dichloroethane-d4  
 Concen: 51.29 ug/l  
 RT: 8.03 min Scan# 2003  
 Delta R.T. 0.00 min  
 Lab File: VN050055.D  
 Acq: 25 Jul 2018 20:35

Tgt Ion	Resp	Lower	Upper
65	444367		
67	54.0	0.0	108.4

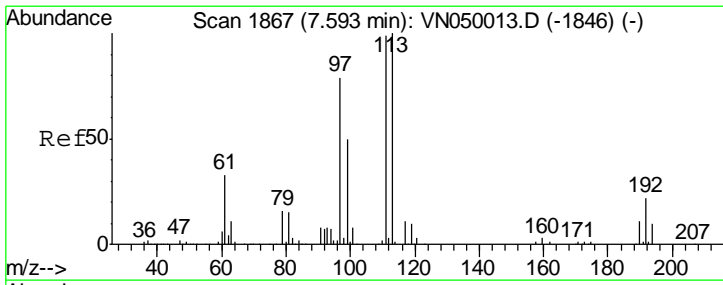
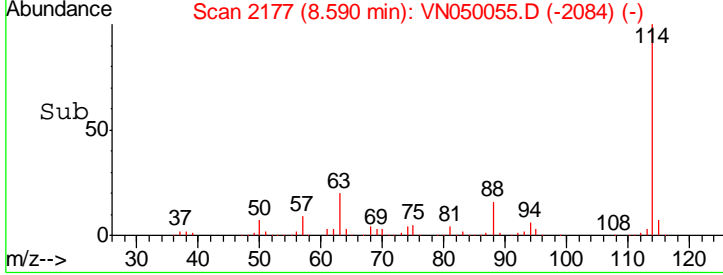
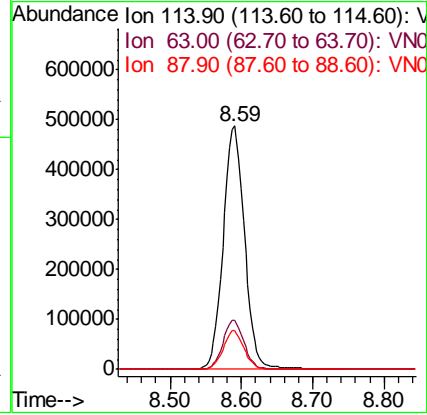
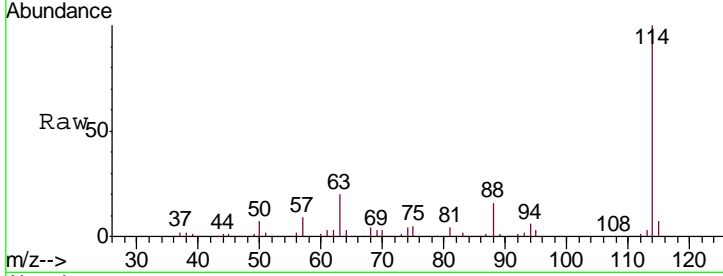




#34  
 1,4-Difluorobenzene  
 Concen: 50.00 ug/l  
 RT: 8.59 min Scan# 2177  
 Delta R.T. 0.00 min  
 Lab File: VN050055.D  
 Acq: 25 Jul 2018 20:35

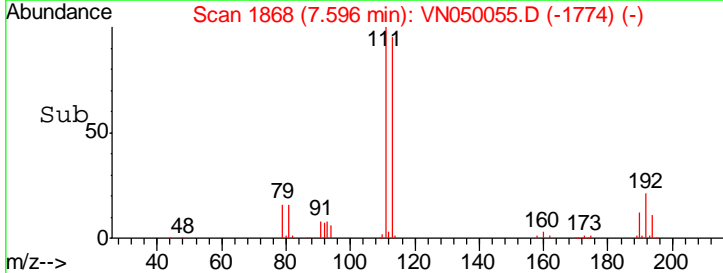
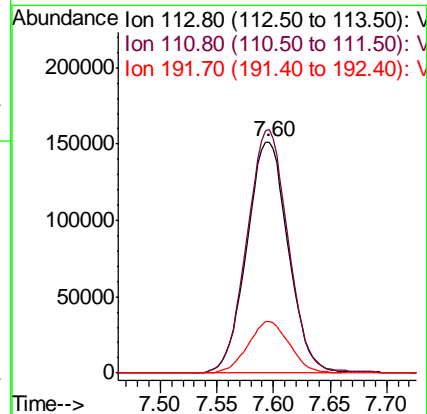
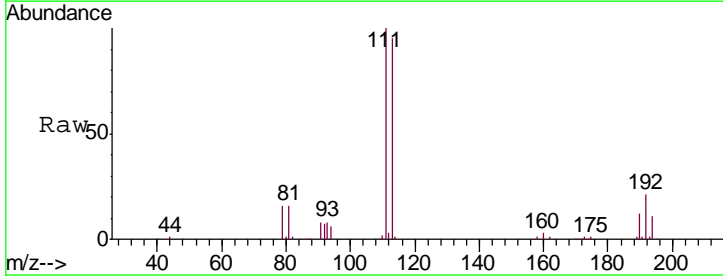
Instrument :  
 MSVOA\_N  
 ClientSampled :  
 PB111424ZHE#02

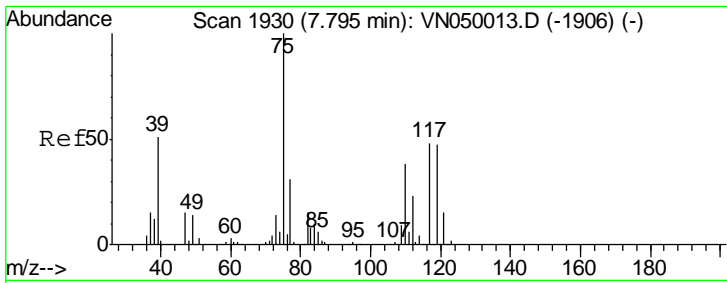
Tgt Ion	Resp	Lower	Upper
114	1015872		
63	20.0	0.0	40.0
88	15.9	0.0	31.2



#35  
 Dibromofluoromethane  
 Concen: 46.67 ug/l  
 RT: 7.60 min Scan# 1868  
 Delta R.T. 0.00 min  
 Lab File: VN050055.D  
 Acq: 25 Jul 2018 20:35

Tgt Ion	Resp	Lower	Upper
113	387055		
111	105.0	80.7	121.1
192	22.2	17.8	26.6

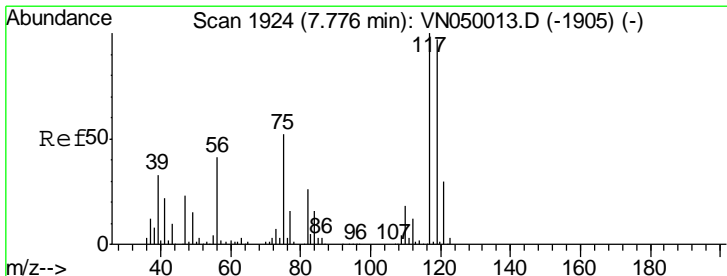
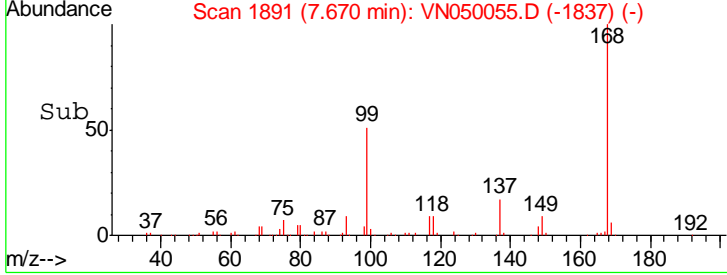
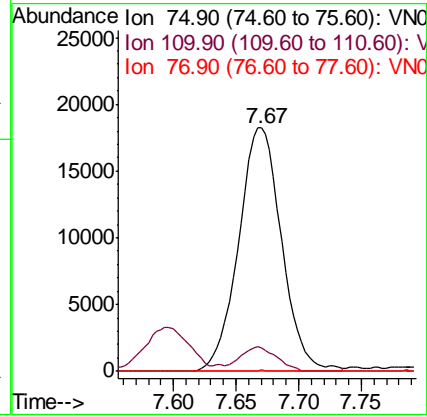
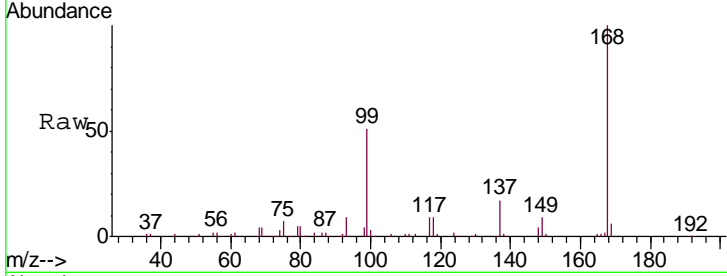




#36  
 1,1-Dichloropropene  
 Concen: 3.80 ug/l  
 RT: 7.67 min Scan# 1891  
 Delta R.T. -0.13 min  
 Lab File: VN050055.D  
 Acq: 25 Jul 2018 20:35

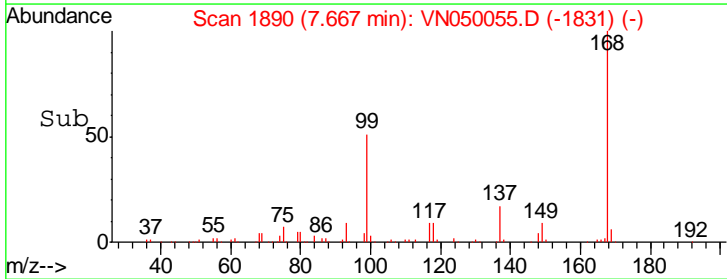
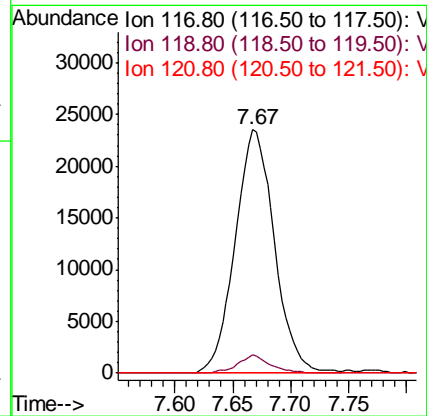
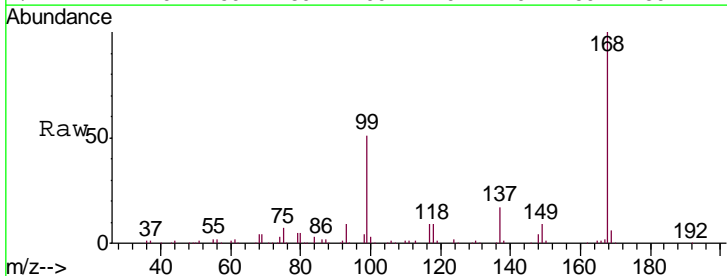
Instrument : MSVOA\_N  
 ClientSampleID : PB111424ZHE#02

Tgt Ion	Resp	Lower	Upper
75	100		
110	8.5	18.4	55.2#
77	0.1	25.3	37.9#

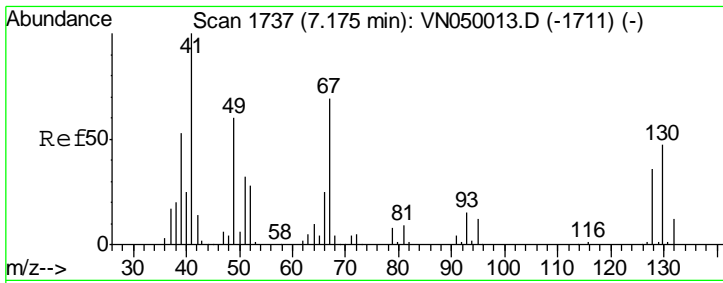


#38  
 Carbon Tetrachloride  
 Concen: 4.55 ug/l  
 RT: 7.67 min Scan# 1890  
 Delta R.T. -0.11 min  
 Lab File: VN050055.D  
 Acq: 25 Jul 2018 20:35

Tgt Ion	Resp	Lower	Upper
117	100		
119	7.4	77.4	116.0#
121	0.0	23.9	35.9#



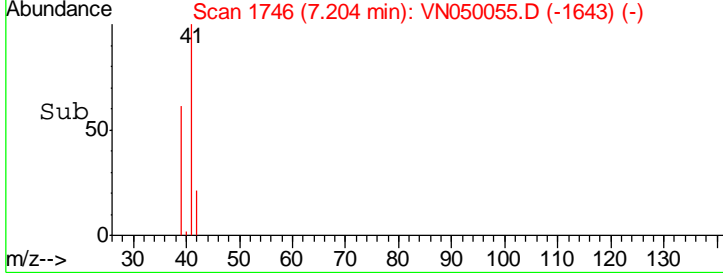
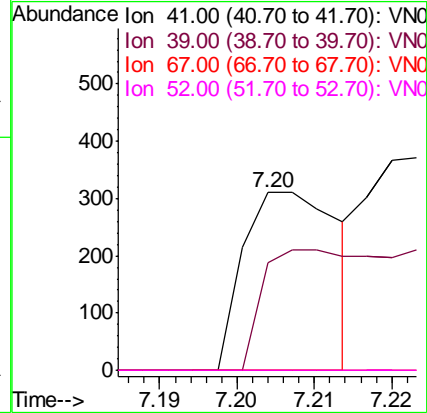
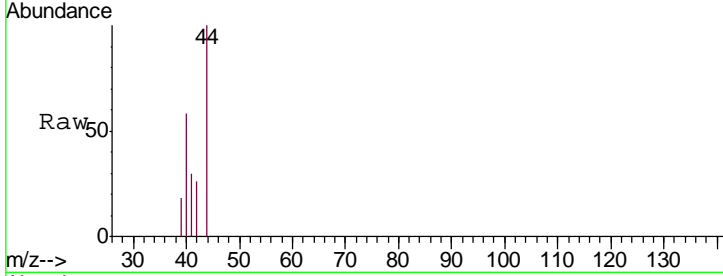




#41  
 Methacrylonitrile  
 Concen: 2.81 ug/l  
 RT: 7.20 min Scan# 1746  
 Delta R.T. 0.03 min  
 Lab File: VN050055.D  
 Acq: 25 Jul 2018 20:35

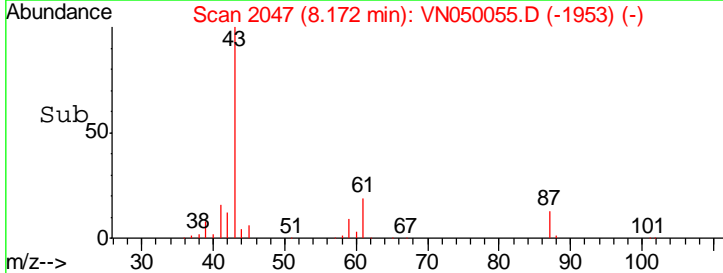
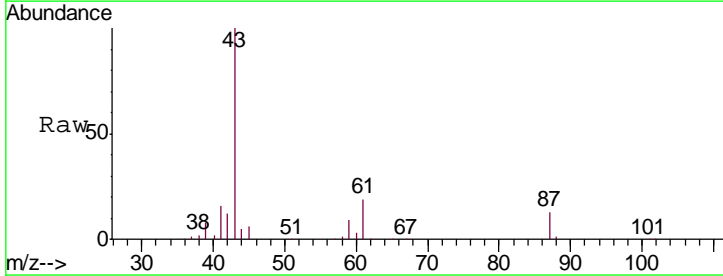
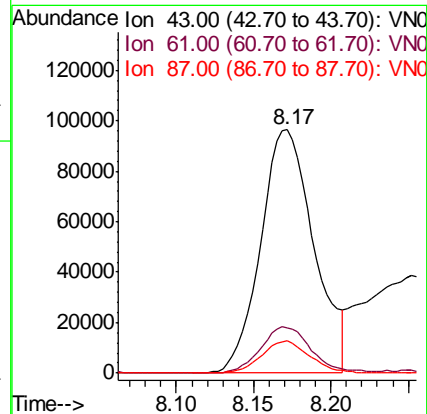
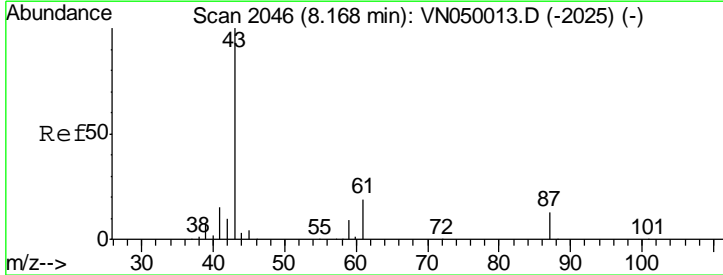
Instrument : MSVOA\_N  
 ClientSampleId : PB111424ZHE#02

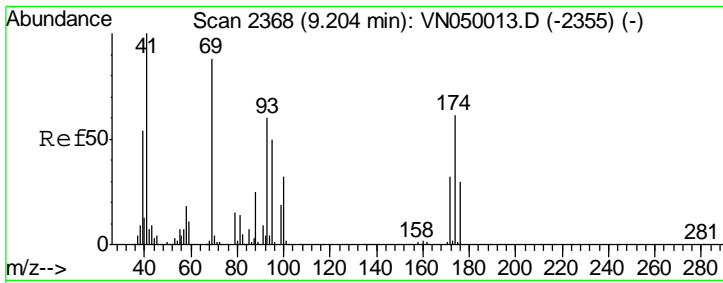
Tgt Ion	Resp	Lower	Upper
41	100		
39	87.6	55.8	83.6#
67	0.0	84.3	126.5#
52	0.0	34.2	51.2#



#43  
 Isopropyl Acetate  
 Concen: 14.60 ug/l  
 RT: 8.17 min Scan# 2047  
 Delta R.T. 0.00 min  
 Lab File: VN050055.D  
 Acq: 25 Jul 2018 20:35

Tgt Ion	Resp	Lower	Upper
43	100		
61	18.2	15.8	23.6
87	11.9	10.3	15.5

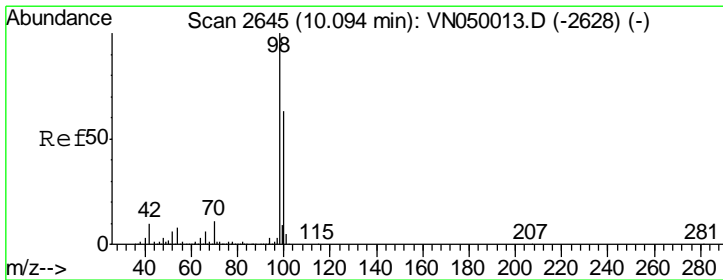
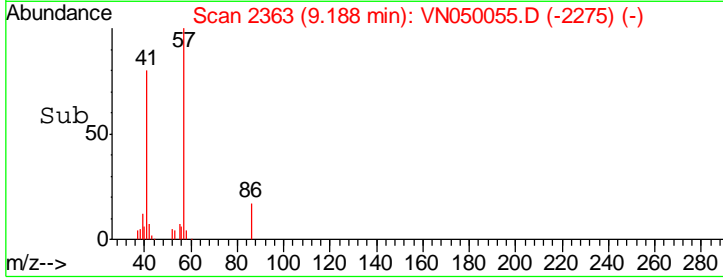
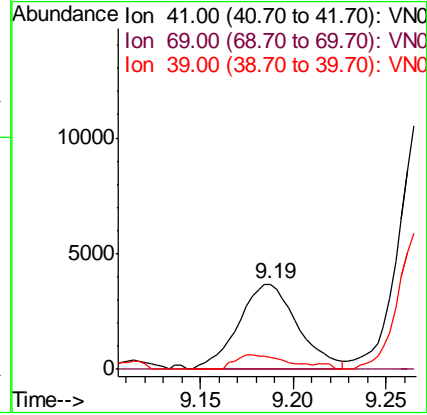
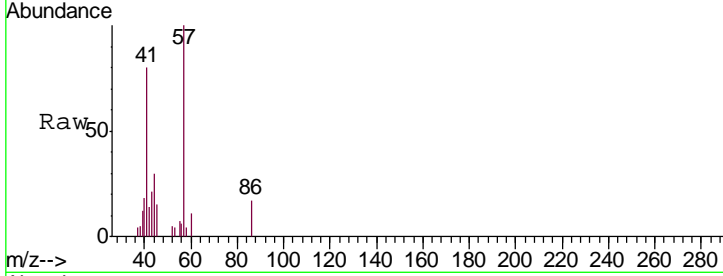




#48  
 Methyl methacrylate  
 Concen: 1.19 ug/l  
 RT: 9.19 min Scan# 2363  
 Delta R.T. -0.02 min  
 Lab File: VN050055.D  
 Acq: 25 Jul 2018 20:35

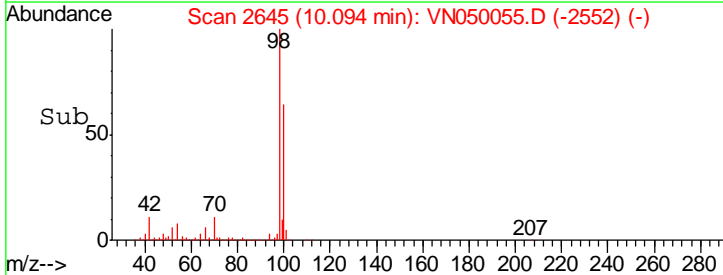
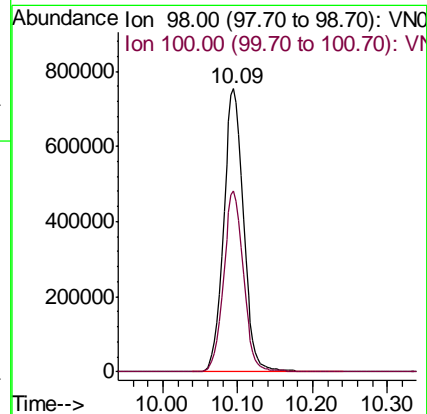
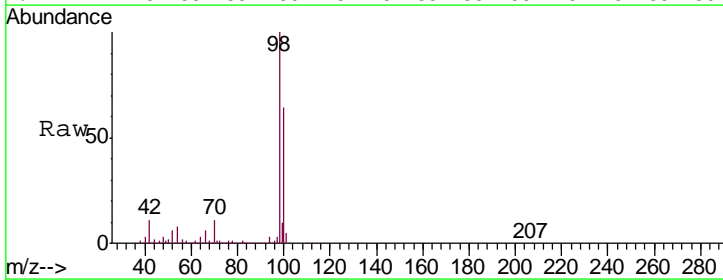
Instrument : MSVOA\_N  
 ClientSampled : PB111424ZHE#02

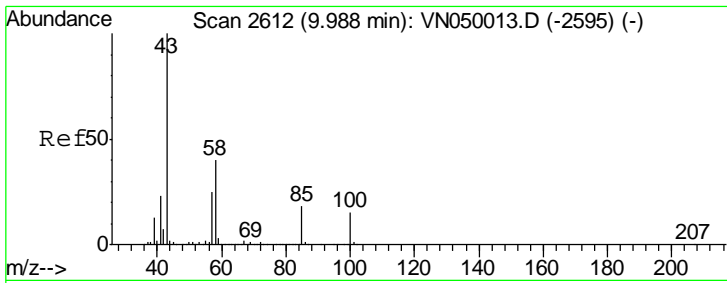
Tgt Ion	Resp	Lower	Upper
41	100		
69	0.0	70.6	105.8#
39	14.4	43.9	65.9#



#50  
 Toluene-d8  
 Concen: 45.50 ug/l  
 RT: 10.09 min Scan# 2645  
 Delta R.T. 0.00 min  
 Lab File: VN050055.D  
 Acq: 25 Jul 2018 20:35

Tgt Ion	Resp	Lower	Upper
98	100		
100	63.7	50.7	76.1

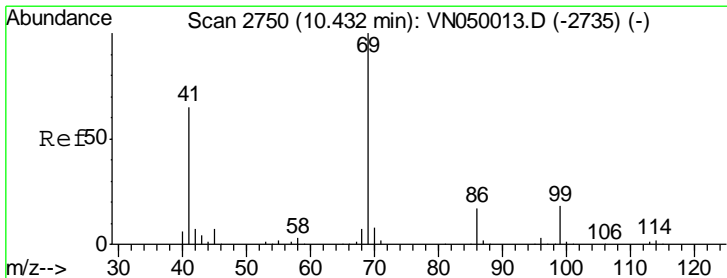
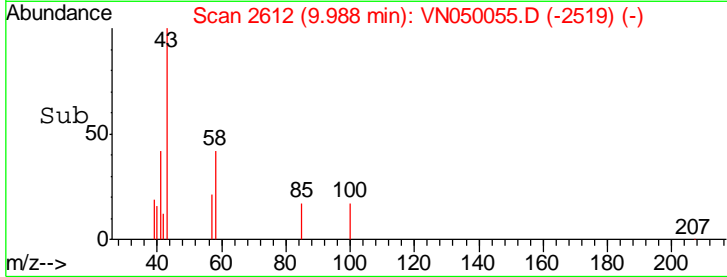
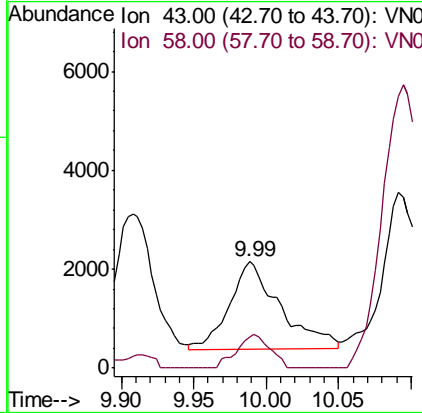
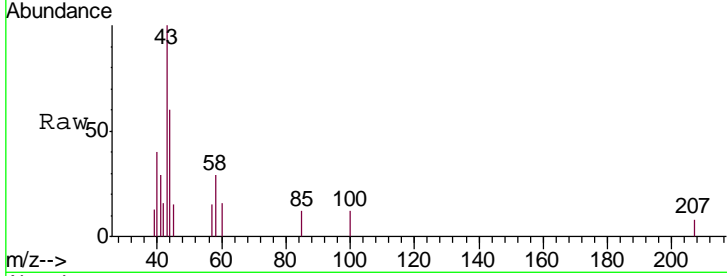




#51  
 4-Methyl-2-Pentanone  
 Concen: 0.55 ug/l  
 RT: 9.99 min Scan# 2612  
 Delta R.T. 0.00 min  
 Lab File: VN050055.D  
 Acq: 25 Jul 2018 20:35

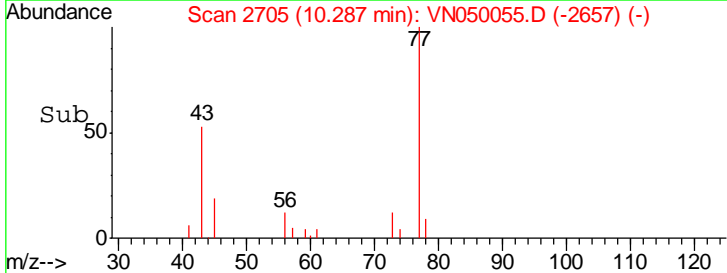
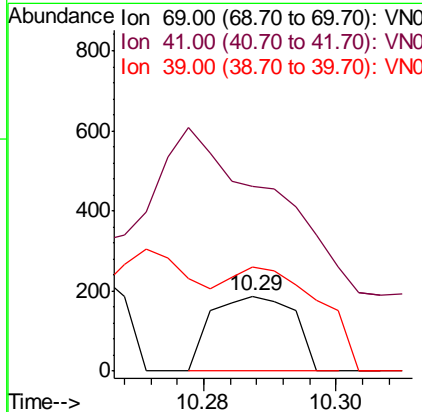
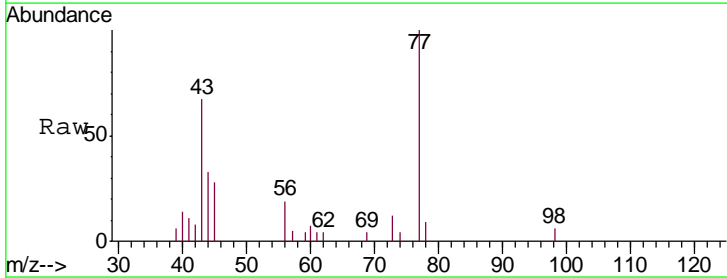
Instrument :  
 MSVOA\_N  
 ClientSampled :  
 PB111424ZHE#02

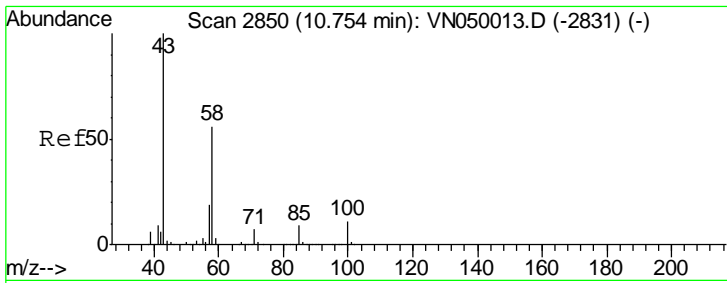
Tgt Ion: 43 Resp: 4291  
 Ion Ratio Lower Upper  
 43 100  
 58 25.0 31.9 47.9#



#56  
 Ethyl methacrylate  
 Concen: 2.04 ug/l  
 RT: 10.29 min Scan# 2705  
 Delta R.T. -0.14 min  
 Lab File: VN050055.D  
 Acq: 25 Jul 2018 20:35

Tgt Ion: 69 Resp: 161  
 Ion Ratio Lower Upper  
 69 100  
 41 352.8 51.0 76.4#  
 39 46.6 26.6 40.0#

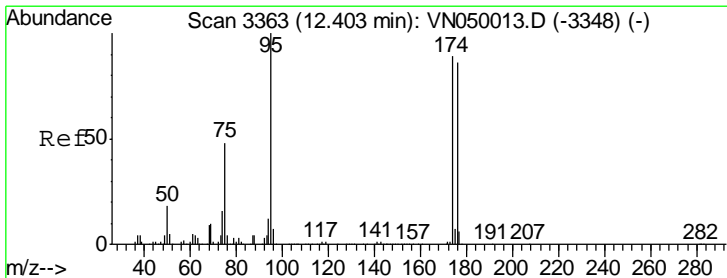
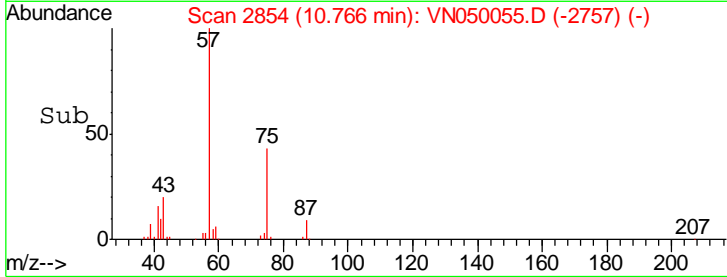
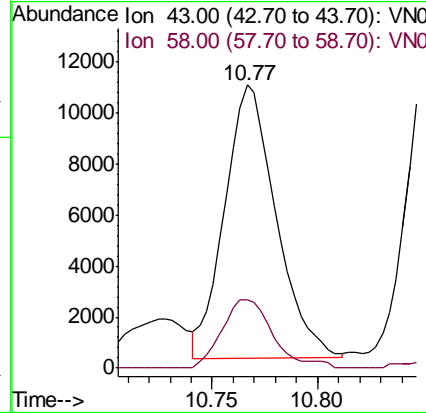
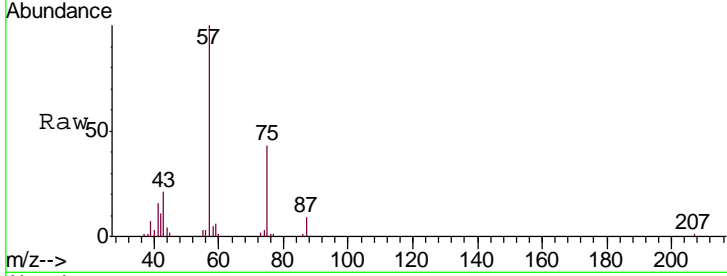




#59  
 2-Hexanone  
 Concen: 8.25 ug/l  
 RT: 10.77 min Scan# 2854  
 Delta R.T. 0.01 min  
 Lab File: VN050055.D  
 Acq: 25 Jul 2018 20:35

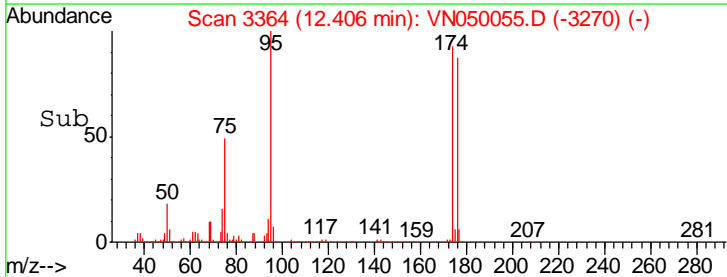
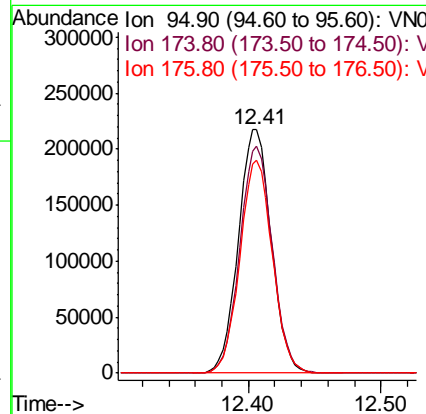
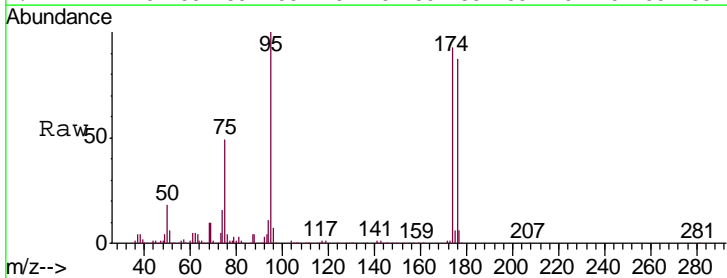
Instrument :  
 MSVOA\_N  
 ClientSampled :  
 PB111424ZHE#02

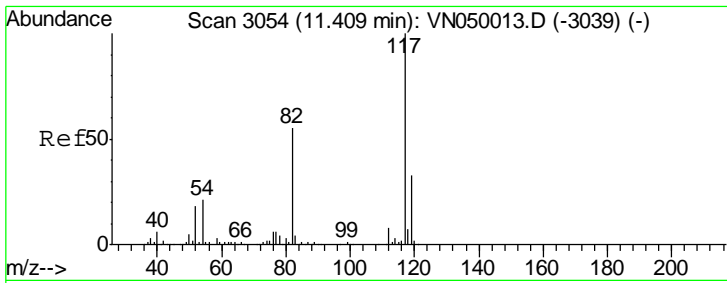
Tgt Ion: 43 Resp: 18093  
 Ion Ratio Lower Upper  
 43 100  
 58 24.0 27.6 82.7#



#62  
 4-Bromofluorobenzene  
 Concen: 37.22 ug/l  
 RT: 12.41 min Scan# 3364  
 Delta R.T. 0.00 min  
 Lab File: VN050055.D  
 Acq: 25 Jul 2018 20:35

Tgt Ion: 95 Resp: 373684  
 Ion Ratio Lower Upper  
 95 100  
 174 92.3 0.0 178.2  
 176 86.6 0.0 173.4

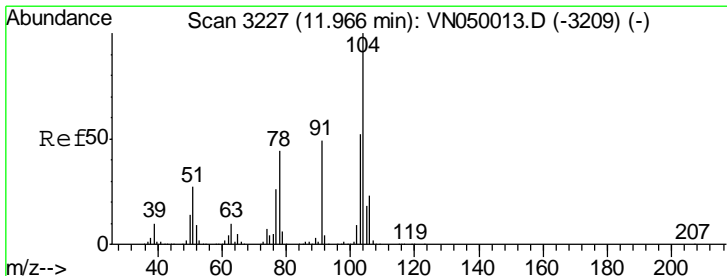
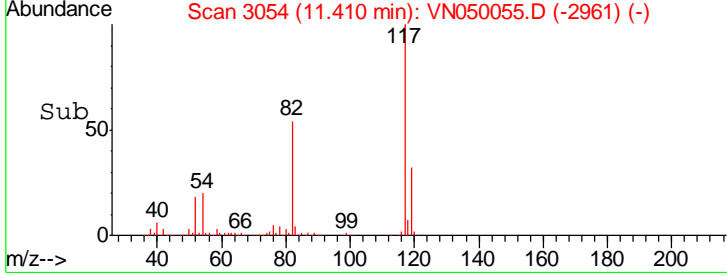
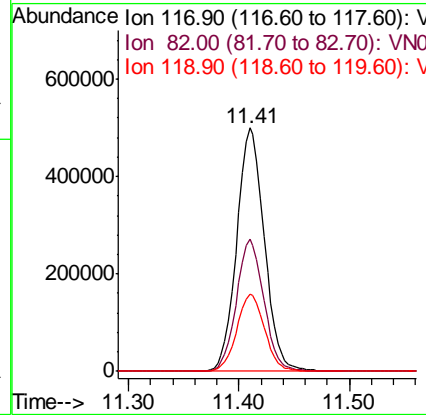
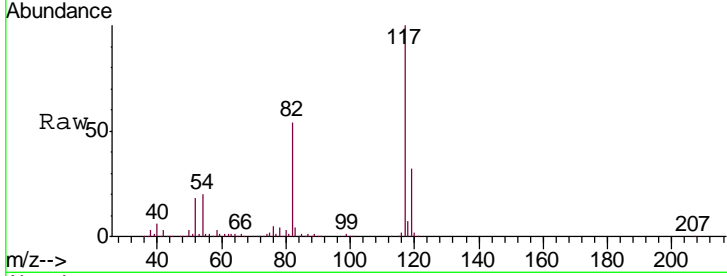




#63  
 Chlorobenzene-d5  
 Concen: 50.00 ug/l  
 RT: 11.41 min Scan# 3054  
 Delta R.T. 0.00 min  
 Lab File: VN050055.D  
 Acq: 25 Jul 2018 20:35

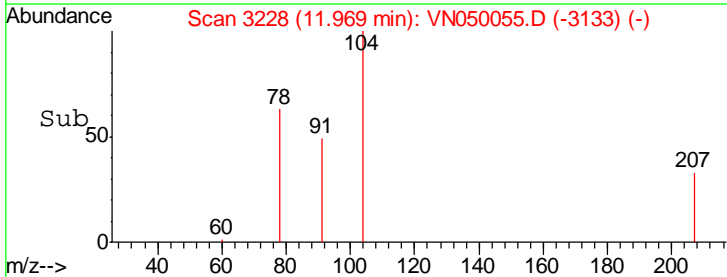
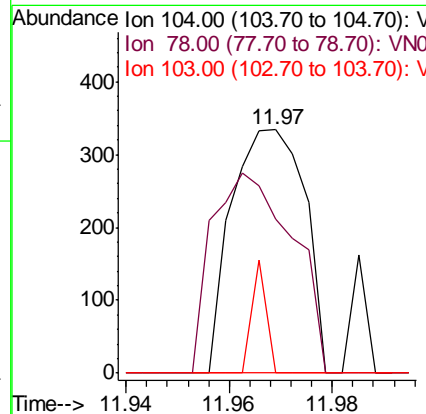
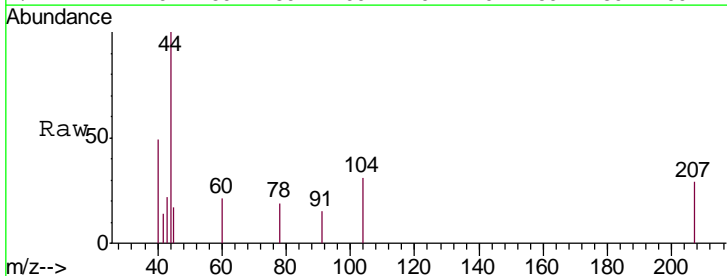
Instrument : MSVOA\_N  
 ClientSampled : PB111424ZHE#02

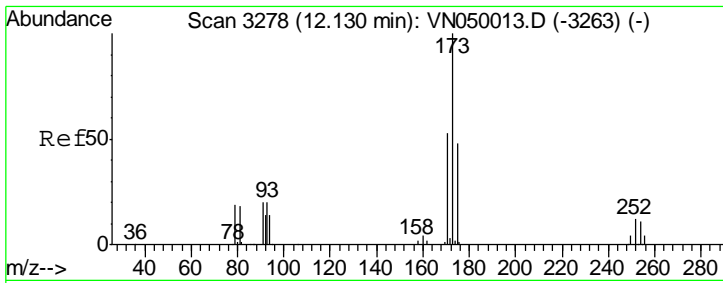
Tgt Ion	Resp	Lower	Upper
117	100		
82	54.2	43.7	65.5
119	31.6	26.1	39.1



#70  
 Styrene  
 Concen: 0.94 ug/l  
 RT: 11.97 min Scan# 3228  
 Delta R.T. 0.00 min  
 Lab File: VN050055.D  
 Acq: 25 Jul 2018 20:35

Tgt Ion	Resp	Lower	Upper
104	100		
78	90.8	39.3	58.9#
103	9.2	45.0	67.6#

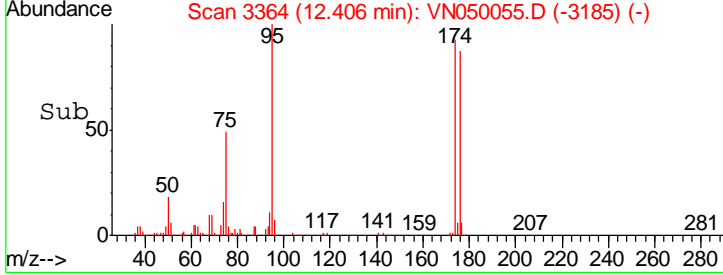
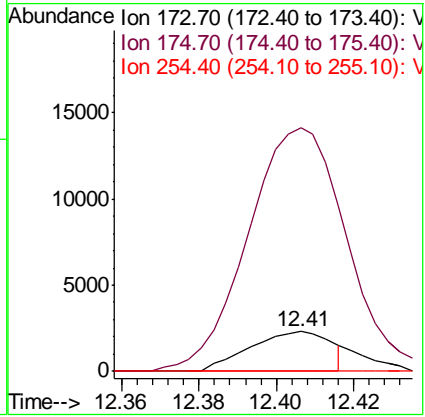
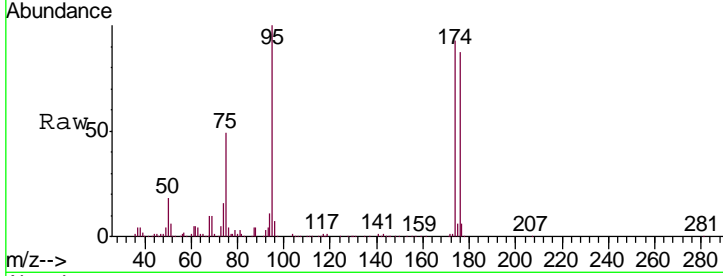




#71  
 Bromoform  
 Concen: 0.55 ug/l  
 RT: 12.41 min Scan# 3364  
 Delta R.T. 0.28 min  
 Lab File: VN050055.D  
 Acq: 25 Jul 2018 20:35

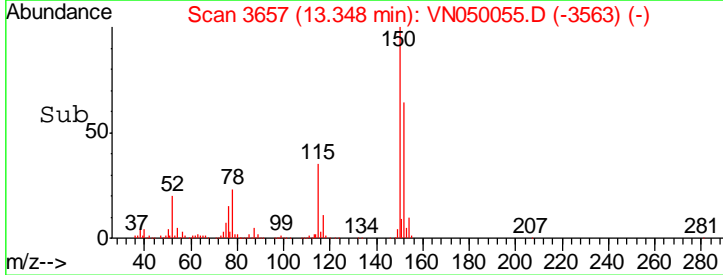
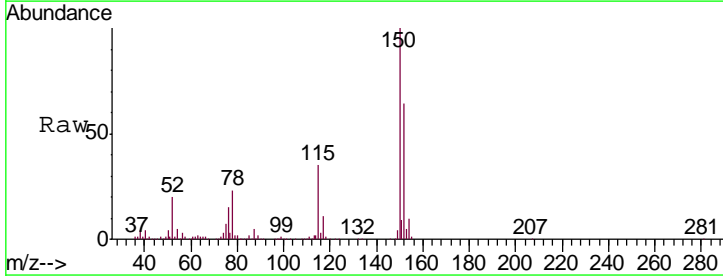
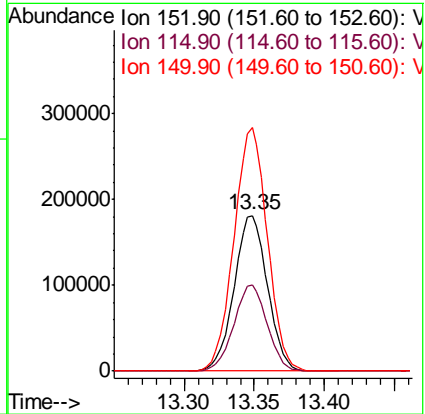
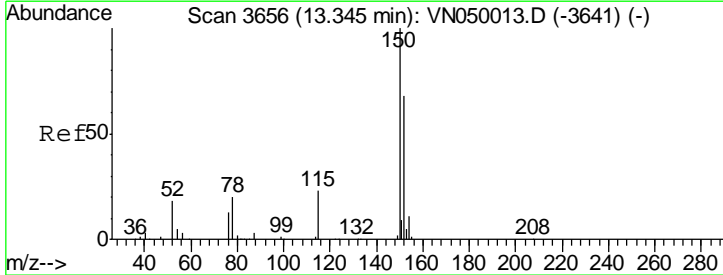
Instrument : MSVOA\_N  
 ClientSampled : PB111424ZHE#02

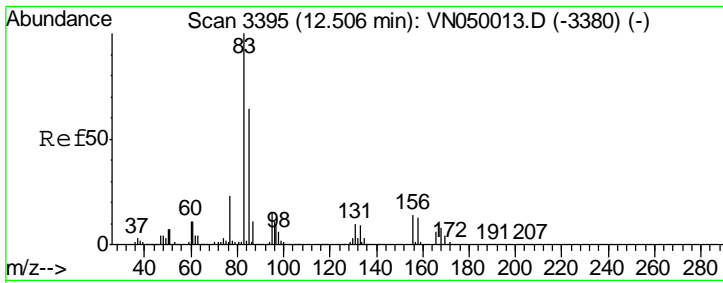
Tgt Ion	Resp	Lower	Upper
173	100		
175	636.1	24.1	72.2#
254	0.0	0.2	0.2#



#72  
 1,4-Dichlorobenzene-d4  
 Concen: 50.00 ug/l  
 RT: 13.35 min Scan# 3657  
 Delta R.T. 0.00 min  
 Lab File: VN050055.D  
 Acq: 25 Jul 2018 20:35

Tgt Ion	Resp	Lower	Upper
152	100		
115	55.2	27.8	83.3
150	156.6	0.0	348.6

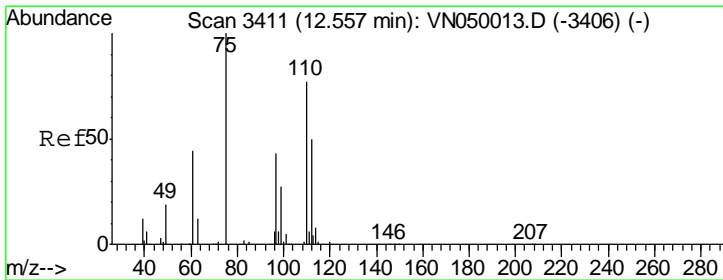
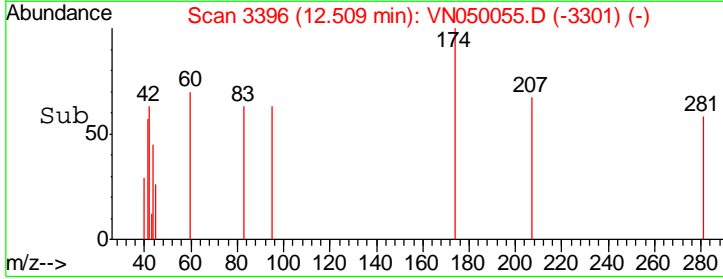
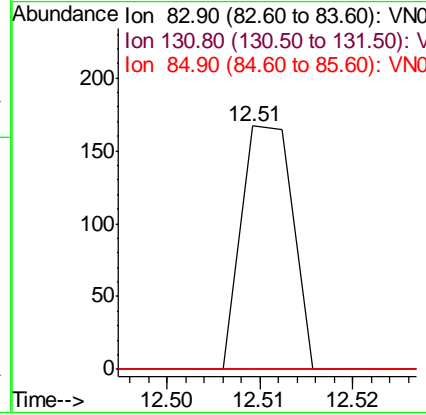
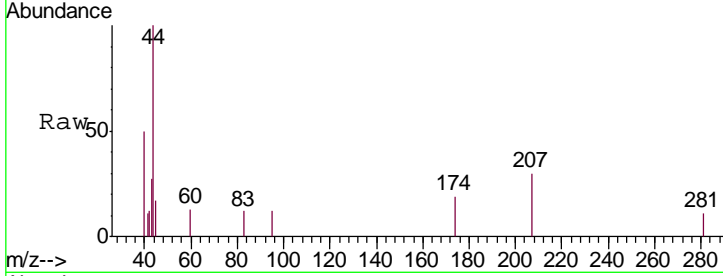




#75  
 1,1,2,2-Tetrachloroethane  
 Concen: Below Cal  
 RT: 12.51 min Scan# 3396  
 Delta R.T. 0.00 min  
 Lab File: VN050055.D  
 Acq: 25 Jul 2018 20:35

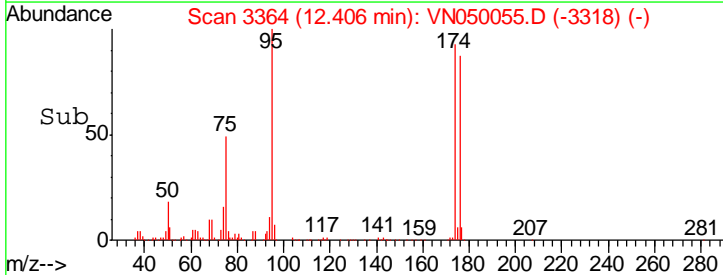
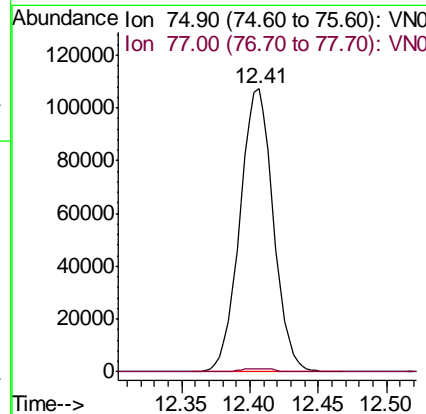
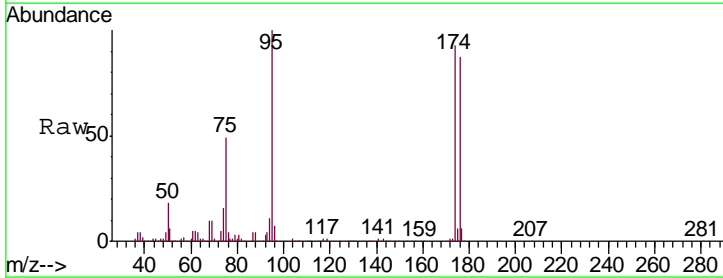
Instrument : MSVOA\_N  
 ClientSampleId : PB111424ZHE#02

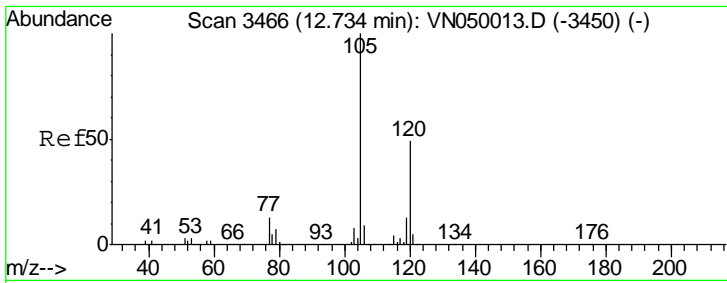
Tgt Ion	Resp	Lower	Upper
83	100		
131	0.0	5.1	15.3#
85	0.0	32.3	96.8#



#76  
 1,2,3-Trichloropropane  
 Concen: 32.64 ug/l  
 RT: 12.41 min Scan# 3364  
 Delta R.T. -0.15 min  
 Lab File: VN050055.D  
 Acq: 25 Jul 2018 20:35

Tgt Ion	Resp	Lower	Upper
75	100		
77	1.2	0.0	0.0#

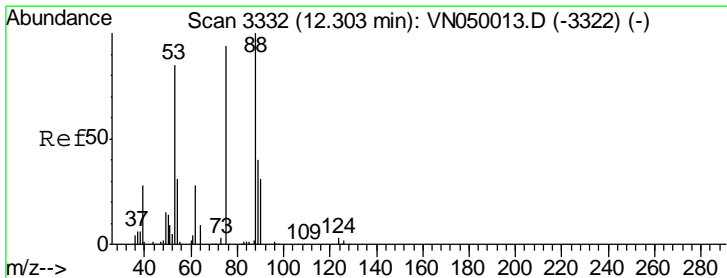
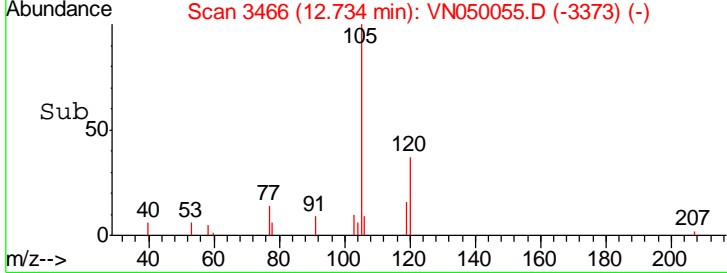
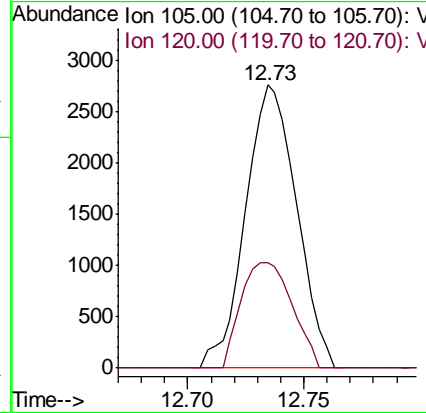
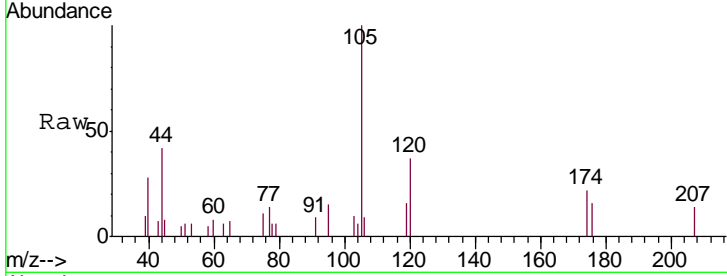




#80  
 1,3,5-Trimethylbenzene  
 Concen: 0.23 ug/l  
 RT: 12.73 min Scan# 3466  
 Delta R.T. 0.00 min  
 Lab File: VN050055.D  
 Acq: 25 Jul 2018 20:35

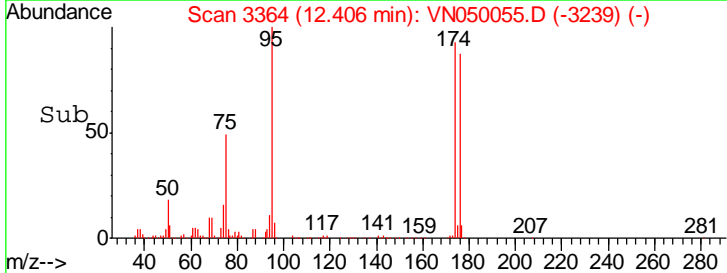
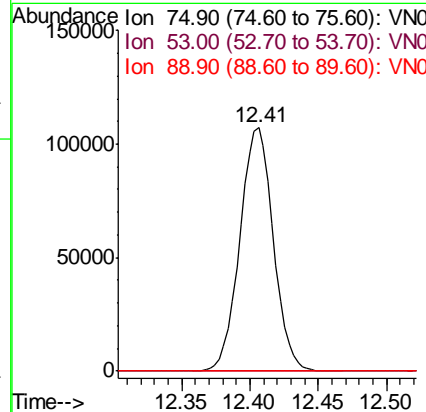
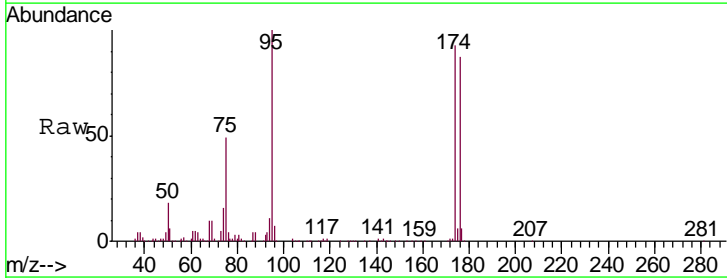
Instrument : MSVOA\_N  
 ClientSampled : PB111424ZHE#02

Tgt Ion	Resp	Lower	Upper
105	100		
120	37.3	24.4	73.2

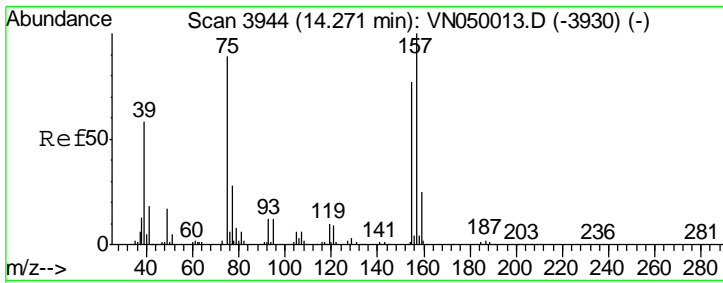


#81  
 trans-1,4-Dichloro-2-butene  
 Concen: 103.53 ug/l  
 RT: 12.41 min Scan# 3364  
 Delta R.T. 0.10 min  
 Lab File: VN050055.D  
 Acq: 25 Jul 2018 20:35

Tgt Ion	Resp	Lower	Upper
75	100		
53	0.1	73.5	110.3#
89	0.0	36.0	54.0#



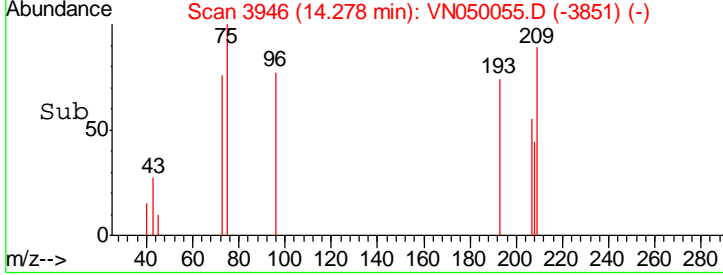
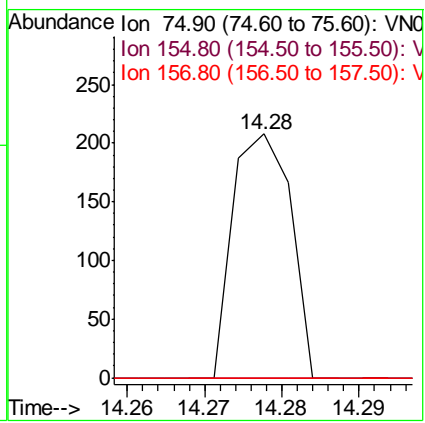
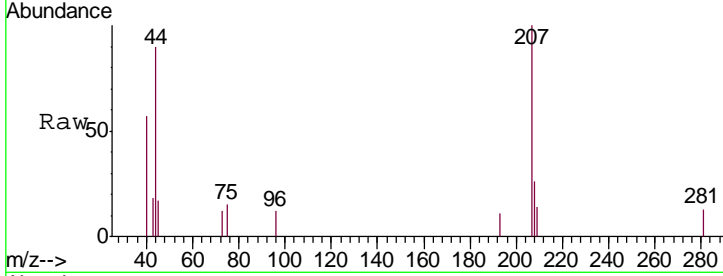




#92  
 1,2-Dibromo-3-Chloropropane  
 Concen: Below Cal  
 RT: 14.28 min Scan# 3946  
 Delta R.T. 0.01 min  
 Lab File: VN050055.D  
 Acq: 25 Jul 2018 20:35

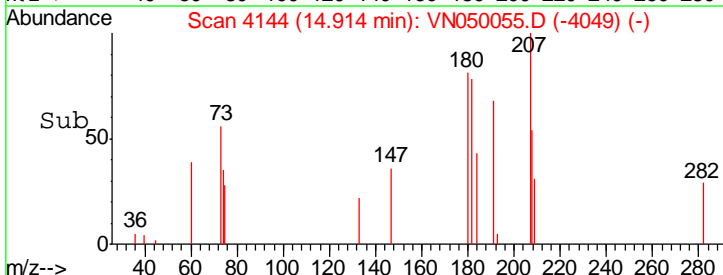
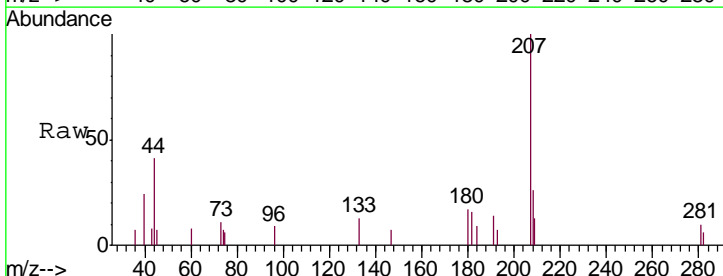
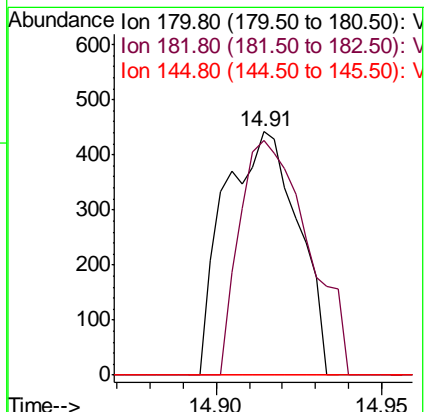
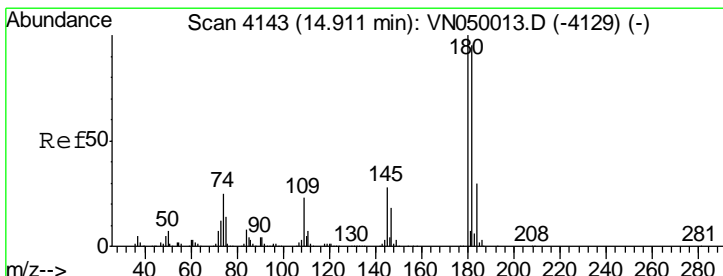
Instrument : MSVOA\_N  
 ClientSampleId : PB111424ZHE#02

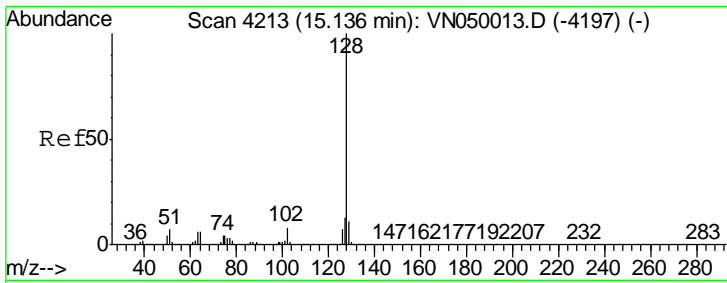
Tgt Ion	Resp	Lower	Upper
75	108		
155	0.0	44.8	134.4#
157	0.0	57.2	171.6#



#93  
 1,2,4-Trichlorobenzene  
 Concen: 3.20 ug/l  
 RT: 14.91 min Scan# 4144  
 Delta R.T. 0.00 min  
 Lab File: VN050055.D  
 Acq: 25 Jul 2018 20:35

Tgt Ion	Resp	Lower	Upper
180	685		
182	89.2	46.7	140.1
145	0.0	13.8	41.4#

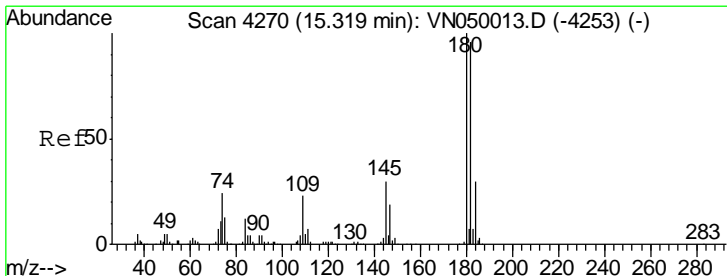
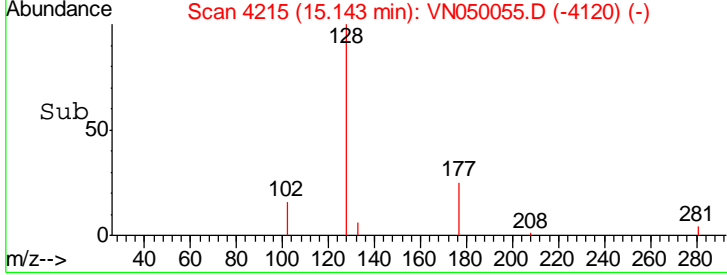
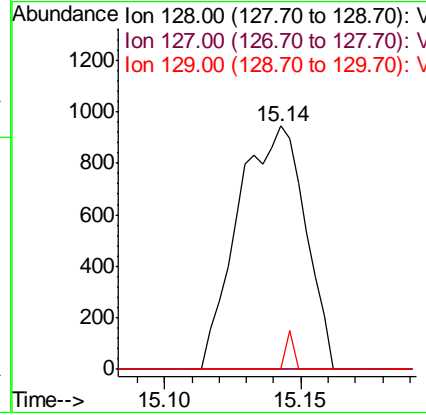
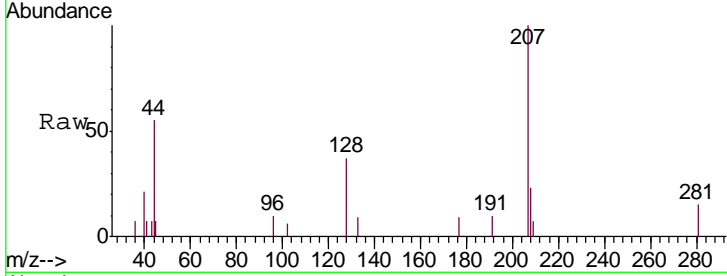




#95  
 Naphthalene  
 Concen: 4.52 ug/l  
 RT: 15.14 min Scan# 4215  
 Delta R.T. 0.01 min  
 Lab File: VN050055.D  
 Acq: 25 Jul 2018 20:35

Instrument : MSVOA\_N  
 ClientSampled : PB111424ZHE#02

Tgt Ion	Resp	Lower	Upper
128	1616		
127	0.0	10.4	15.6#
129	1.8	8.8	13.2#



#96  
 1,2,3-Trichlorobenzene  
 Concen: 2.30 ug/l  
 RT: 15.32 min Scan# 4271  
 Delta R.T. 0.00 min  
 Lab File: VN050055.D  
 Acq: 25 Jul 2018 20:35

Tgt Ion	Resp	Lower	Upper
180	586		
182	44.2	48.1	144.4#
145	5.6	15.3	45.9#

