

Data Path : Z:\voasrv\HPCHEM1\MSVOA_N\Data\VN072523\
 Data File : VN078645.D
 Acq On : 25 Jul 2023 14:23
 Operator : JC\MD
 Sample : PB154393TB
 Misc : 5.0mL/MSVOA_N/WATER
 ALS Vial : 7 Sample Multiplier: 1

Instrument :
 MSVOA_N
 ClientSampleId :
 PB154393TB

Quant Time: Jul 26 04:46:24 2023
 Quant Method : Z:\voasrv\HPCHEM1\MSVOA_N\methods\82N071023W.M
 Quant Title : SW846 8260
 QLast Update : Mon Jul 10 16:13:53 2023
 Response via : Initial Calibration

Compound	R.T.	QIon	Response	Conc	Units	Dev(Min)

Internal Standards						
1) Pentafluorobenzene	8.236	168	429455	50.000	ug/l	0.00
34) 1,4-Difluorobenzene	9.112	114	752667	50.000	ug/l	0.00
63) Chlorobenzene-d5	11.871	117	724223	50.000	ug/l	0.00
72) 1,4-Dichlorobenzene-d4	13.800	152	235788	50.000	ug/l	0.00
System Monitoring Compounds						
33) 1,2-Dichloroethane-d4	8.588	65	263878	45.834	ug/l	0.00
Spiked Amount	50.000	Range	74 - 125	Recovery	=	91.660%
35) Dibromofluoromethane	8.177	113	267569	52.369	ug/l	0.00
Spiked Amount	50.000	Range	75 - 124	Recovery	=	104.740%
50) Toluene-d8	10.571	98	931986	48.286	ug/l	0.00
Spiked Amount	50.000	Range	86 - 113	Recovery	=	96.580%
62) 4-Bromofluorobenzene	12.853	95	301765	50.757	ug/l	0.00
Spiked Amount	50.000	Range	83 - 123	Recovery	=	101.520%
Target Compounds						
						Qvalue
3) Chloromethane	2.377	50	2312	0.404	ug/l	90
5) Bromomethane	2.971	94	1020	Below Cal	#	69
6) Chloroethane	3.159	64	620	Below Cal	#	57
10) Methyl Iodide	4.606	142	3435	0.534	ug/l #	88
11) Tert butyl alcohol	5.530	59	210	0.237	ug/l #	72
13) Acrolein	4.195	56	785	0.899	ug/l #	29
15) Acrylonitrile	5.730	53	617	0.275	ug/l #	74
16) Acetone	4.442	43	82417	45.956	ug/l	99
17) Carbon Disulfide	4.724	76	4521	0.345	ug/l #	92
18) Methyl Acetate	5.036	43	1807	0.238	ug/l #	42
20) Methylene Chloride	5.289	84	23139	3.357	ug/l	94
21) trans-1,2-Dichloroethene	5.800	96	1104	0.216	ug/l #	50
25) 2-Butanone	7.500	43	57653	20.422	ug/l #	79
29) Tetrahydrofuran	7.859	42	1134	0.612	ug/l #	55
31) Cyclohexane	8.230	56	8403	1.080	ug/l #	10
36) 1,1-Dichloropropene	8.236	75	33167	4.496	ug/l #	49
37) Ethyl Acetate	7.571	43	18160	2.953	ug/l	97
38) Carbon Tetrachloride	8.236	117	46017	5.739	ug/l #	15
42) 1,2-Dichloroethane	8.706	62	2667	0.359	ug/l #	73
43) Isopropyl Acetate	8.700	43	307455	30.365	ug/l #	86
48) Methyl methacrylate	9.747	41	257846	54.968	ug/l #	29
49) 1,4-Dioxane	9.706	88	65	0.635	ug/l #	30
51) 4-Methyl-2-Pentanone	10.453	43	193493	32.128	ug/l	92
54) cis-1,3-Dichloropropene	10.365	75	124533	14.602	ug/l #	67
57) 1,3-Dichloropropane	11.206	76	15466	1.704	ug/l #	44
58) 2-Chloroethyl Vinyl ether	10.165	63	720	0.271	ug/l #	42
59) 2-Hexanone	11.206	43	175501	41.002	ug/l #	51
68) m/p-Xylenes	12.065	106	2390	0.236	ug/l	98
74) N-amyl acetate	12.494	43	4945	0.648	ug/l #	62
75) 1,1,2,2-Tetrachloroethane	12.953	83	1276	Below Cal	#	89
76) 1,2,3-Trichloropropane	12.853	75	155612	27.304	ug/l #	1
77) Bromobenzene	12.982	156	1377	Below Cal		79
80) 1,3,5-Trimethylbenzene	13.182	105	3774	0.216	ug/l	87
81) trans-1,4-Dichloro-2-b...	12.853	75	155612	71.749	ug/l #	15
84) 1,2,4-Trimethylbenzene	13.488	105	4432	0.261	ug/l	98
85) sec-Butylbenzene	13.623	105	3891	0.207	ug/l	100

Data Path : Z:\voasrv\HPCHEM1\MSVOA_N\Data\VN072523\
 Data File : VN078645.D
 Acq On : 25 Jul 2023 14:23
 Operator : JC\MD
 Sample : PB154393TB
 Misc : 5.0mL/MSVOA_N/WATER
 ALS Vial : 7 Sample Multiplier: 1

Instrument :
 MSVOA_N
 ClientSampleId :
 PB154393TB

Quant Time: Jul 26 04:46:24 2023
 Quant Method : Z:\voasrv\HPCHEM1\MSVOA_N\methods\82N071023W.M
 Quant Title : SW846 8260
 QLast Update : Mon Jul 10 16:13:53 2023
 Response via : Initial Calibration

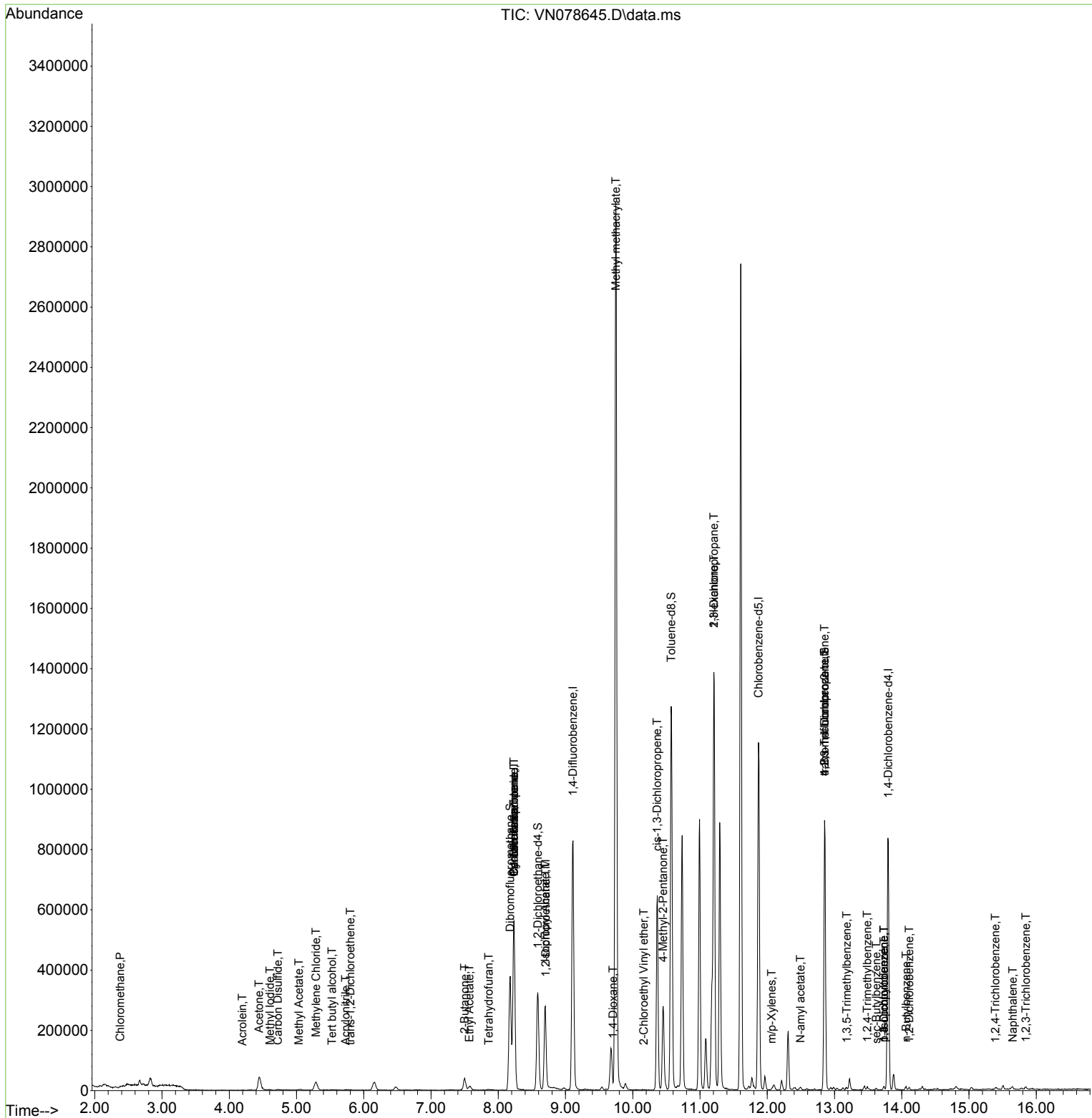
Compound	R.T.	QIon	Response	Conc	Units	Dev(Min)
86) p-Isopropyltoluene	13.735	119	3053	0.202	ug/l #	79
87) 1,3-Dichlorobenzene	13.735	146	3397	0.399	ug/l	92
88) 1,4-Dichlorobenzene	13.735	146	3397	0.397	ug/l	94
89) n-Butylbenzene	14.065	91	5198	0.482	ug/l	98
90) Hexachloroethane	14.335	117	404	Below Cal	#	21
91) 1,2-Dichlorobenzene	14.112	146	3312	0.391	ug/l	88
92) 1,2-Dibromo-3-Chloropr...	14.717	75	495	Below Cal	#	14
93) 1,2,4-Trichlorobenzene	15.394	180	2647	0.980	ug/l #	58
94) Hexachlorobutadiene	15.494	225	2481	Below Cal	#	19
95) Naphthalene	15.653	128	7434	0.805	ug/l #	92
96) 1,2,3-Trichlorobenzene	15.847	180	3675	1.183	ug/l	78

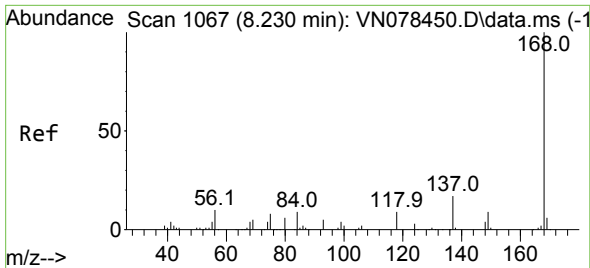
(#) = qualifier out of range (m) = manual integration (+) = signals summed

Data Path : Z:\voasrv\HPCHEM1\MSVOA_N\Data\VN072523\
 Data File : VN078645.D
 Acq On : 25 Jul 2023 14:23
 Operator : JC\MD
 Sample : PB154393TB
 Misc : 5.0mL/MSVOA_N/WATER
 ALS Vial : 7 Sample Multiplier: 1

Instrument :
 MSVOA_N
 ClientSampleId :
 PB154393TB

Quant Time: Jul 26 04:46:24 2023
 Quant Method : Z:\voasrv\HPCHEM1\MSVOA_N\methods\82N071023W.M
 Quant Title : SW846 8260
 QLast Update : Mon Jul 10 16:13:53 2023
 Response via : Initial Calibration

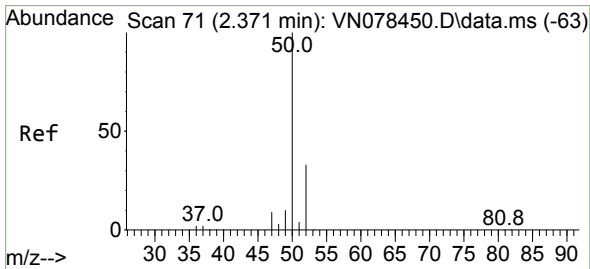
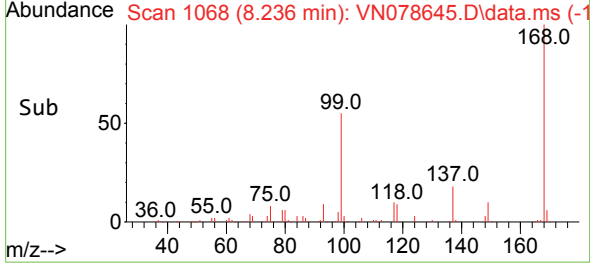
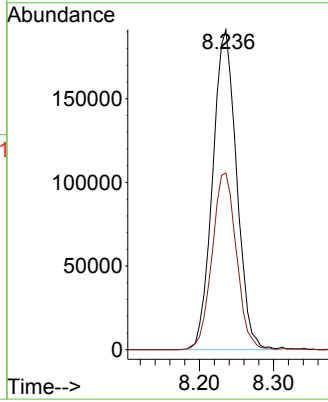
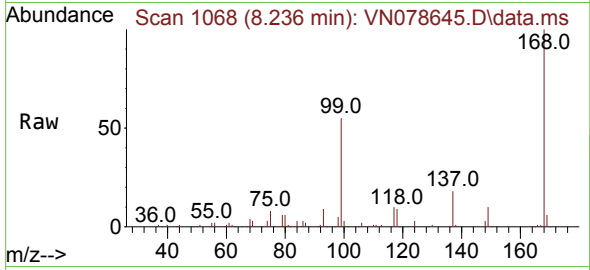




#1
 Pentafluorobenzene
 Concen: 50.000 ug/l
 RT: 8.236 min Scan# 10
 Delta R.T. 0.006 min
 Lab File: VN078645.D
 Acq: 25 Jul 2023 14:23

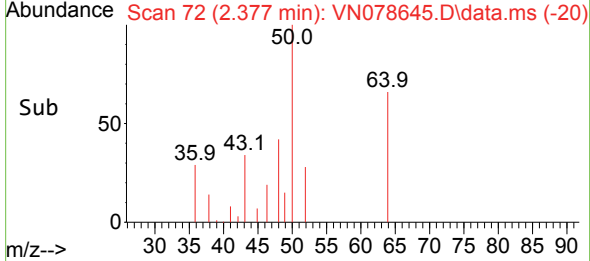
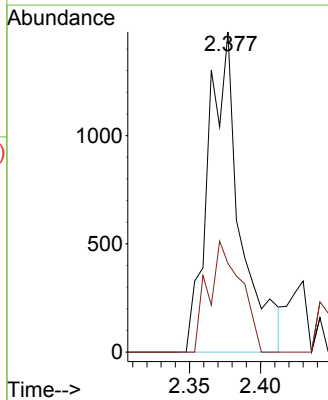
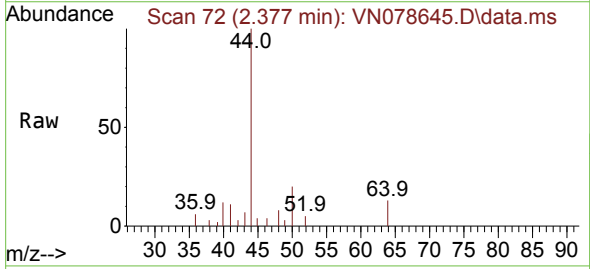
Instrument : MSVOA_N
 ClientSampleId : PB154393TB

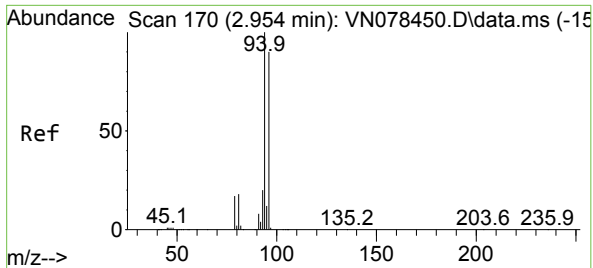
Tgt Ion:168 Resp: 429455
 Ion Ratio Lower Upper
 168 100
 99 55.2 53.0 79.6



#3
 Chloromethane
 Concen: 0.404 ug/l
 RT: 2.377 min Scan# 72
 Delta R.T. 0.006 min
 Lab File: VN078645.D
 Acq: 25 Jul 2023 14:23

Tgt Ion: 50 Resp: 2312
 Ion Ratio Lower Upper
 50 100
 52 27.7 26.5 39.7

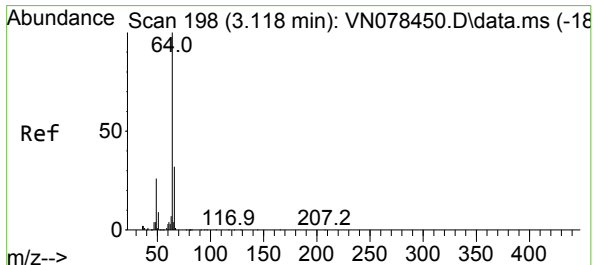
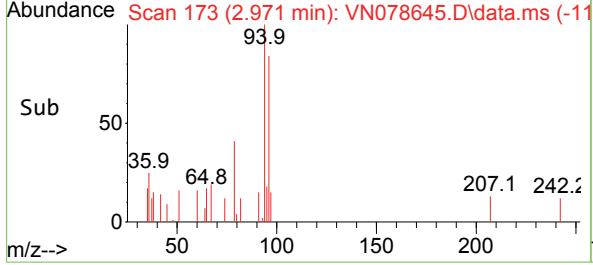
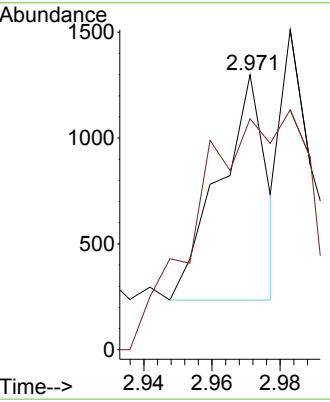
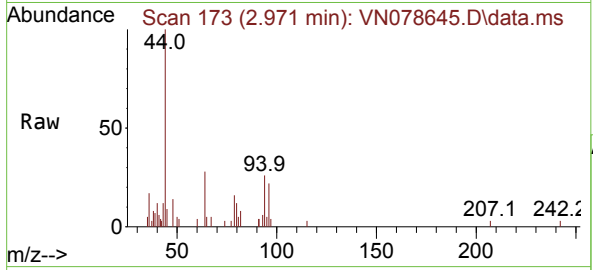




#5
 Bromomethane
 Concen: Below Cal
 RT: 2.971 min Scan# 11
 Delta R.T. 0.017 min
 Lab File: VN078645.D
 Acq: 25 Jul 2023 14:23

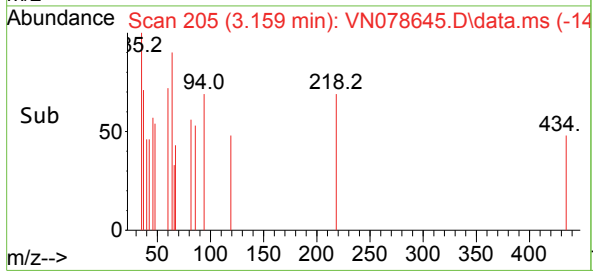
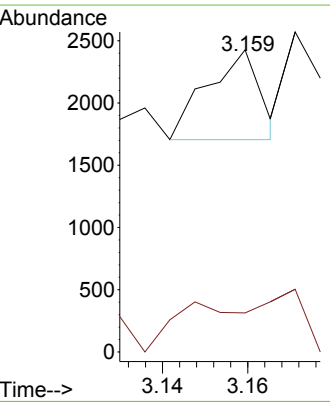
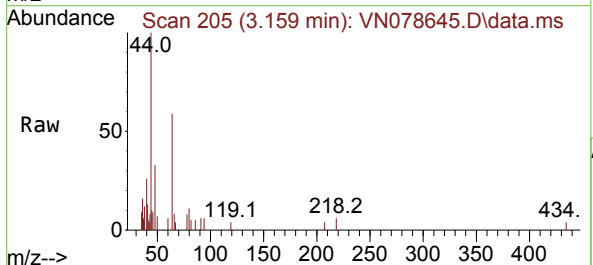
Instrument : MSVOA_N
 ClientSampleId : PB154393TB

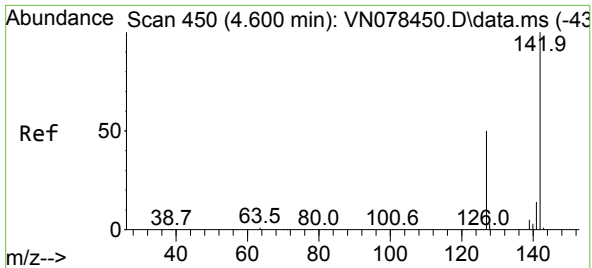
Tgt Ion: 94 Resp: 1020
 Ion Ratio Lower Upper
 94 100
 96 62.1 73.1 109.7#



#6
 Chloroethane
 Concen: Below Cal
 RT: 3.159 min Scan# 205
 Delta R.T. 0.041 min
 Lab File: VN078645.D
 Acq: 25 Jul 2023 14:23

Tgt Ion: 64 Resp: 620
 Ion Ratio Lower Upper
 64 100
 66 7.6 25.4 38.2#

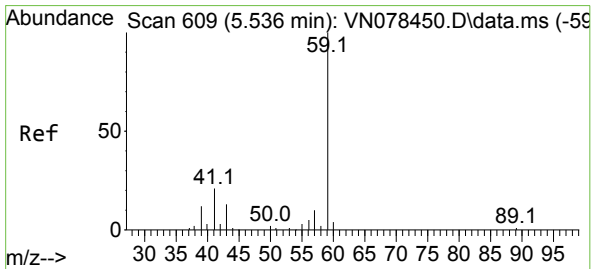
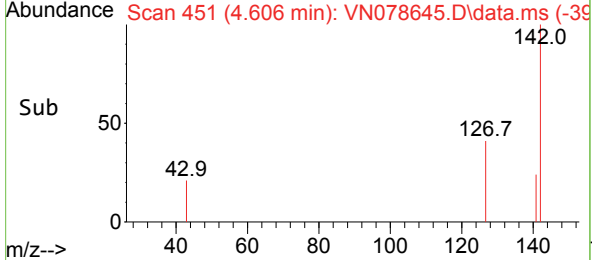
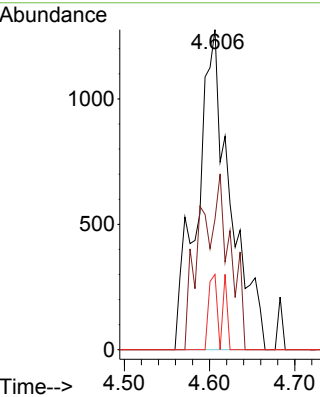
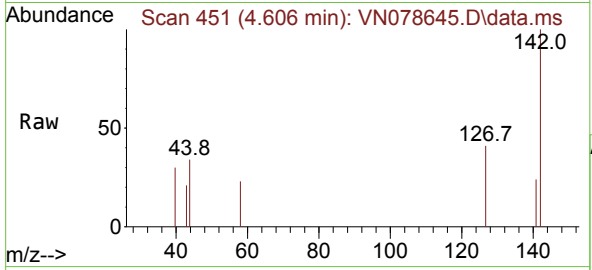




#10
 Methyl Iodide
 Concen: 0.534 ug/l
 RT: 4.606 min Scan# 411
 Delta R.T. 0.006 min
 Lab File: VN078645.D
 Acq: 25 Jul 2023 14:23

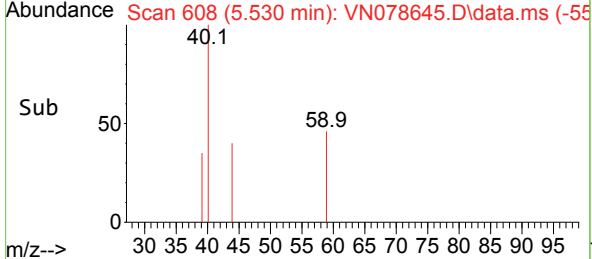
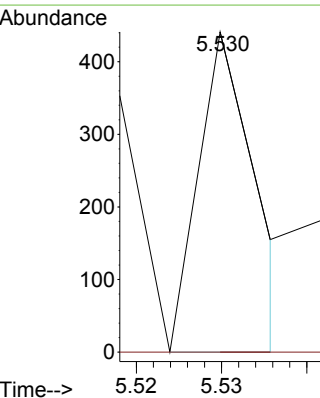
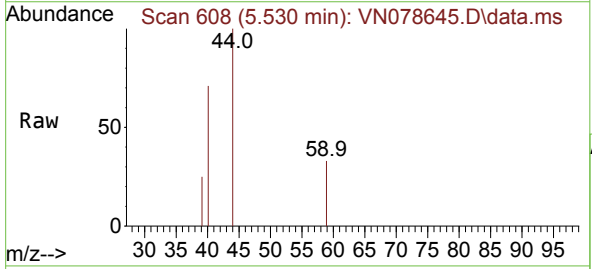
Instrument : MSVOA_N
 Client Sample Id : PB154393TB

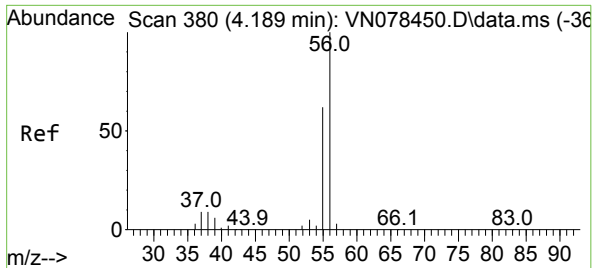
Tgt Ion	Resp	Lower	Upper
142	100		
127	40.8	37.6	56.4
141	23.5	11.4	17.0#



#11
 Tert butyl alcohol
 Concen: 0.237 ug/l
 RT: 5.530 min Scan# 608
 Delta R.T. -0.006 min
 Lab File: VN078645.D
 Acq: 25 Jul 2023 14:23

Tgt Ion	Resp	Lower	Upper
59	100		
57	0.0	8.2	12.4#

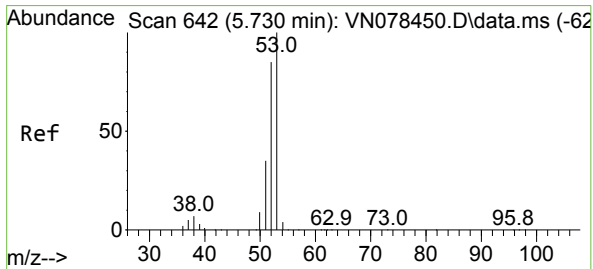
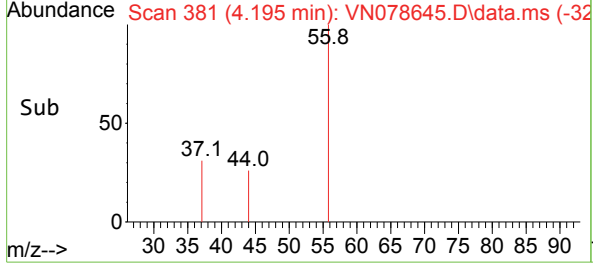
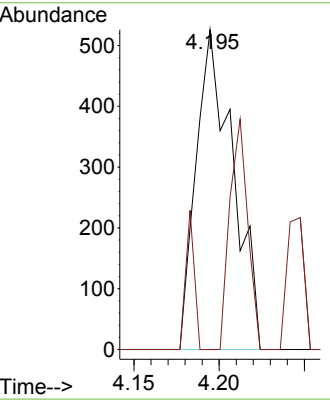
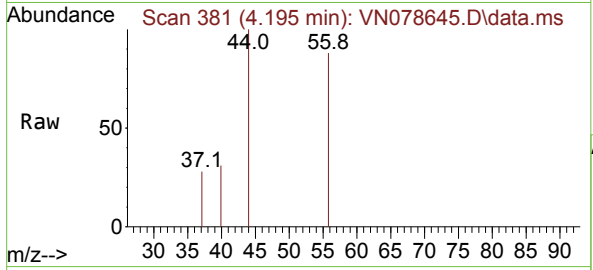




#13
 Acrolein
 Concen: 0.899 ug/l
 RT: 4.195 min Scan# 381
 Delta R.T. 0.006 min
 Lab File: VN078645.D
 Acq: 25 Jul 2023 14:23

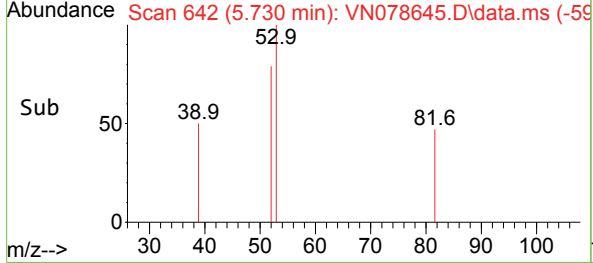
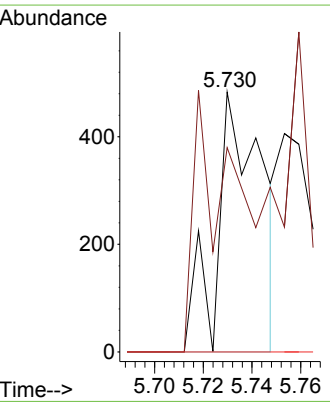
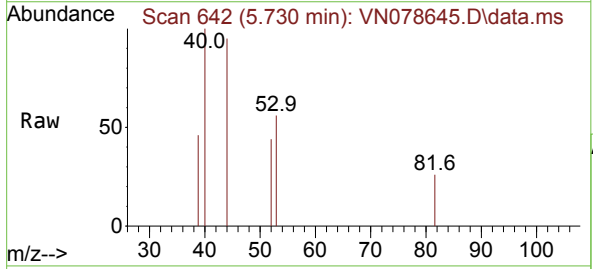
Instrument : MSVOA_N
 Client Sample Id : PB154393TB

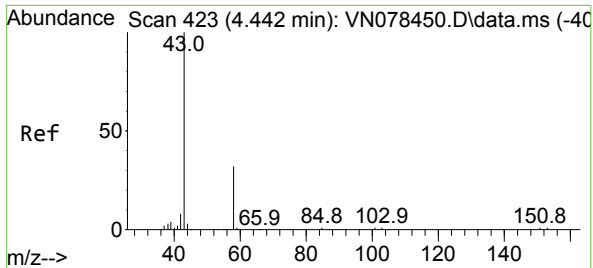
Tgt Ion: 56 Resp: 785
 Ion Ratio Lower Upper
 56 100
 55 10.3 54.5 81.7#



#15
 Acrylonitrile
 Concen: 0.275 ug/l
 RT: 5.730 min Scan# 642
 Delta R.T. -0.000 min
 Lab File: VN078645.D
 Acq: 25 Jul 2023 14:23

Tgt Ion: 53 Resp: 617
 Ion Ratio Lower Upper
 53 100
 52 90.8 65.3 97.9
 51 0.0 28.9 43.3#

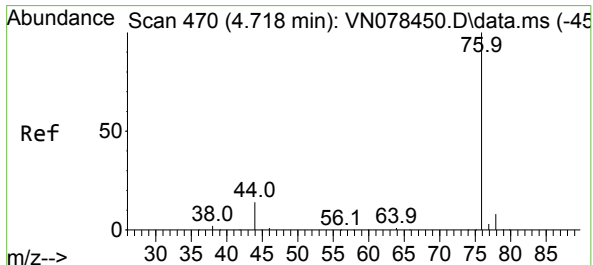
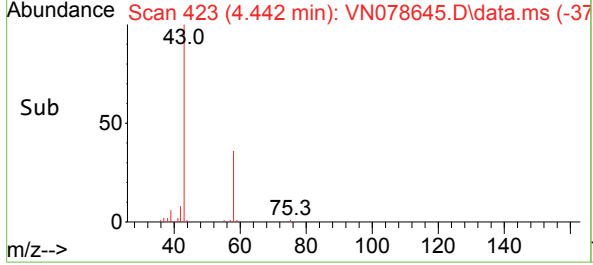
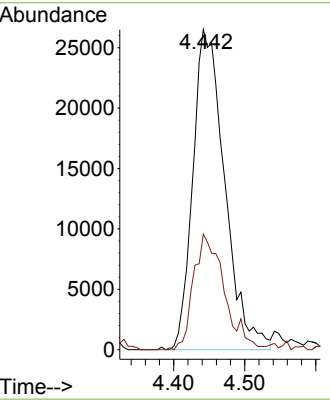
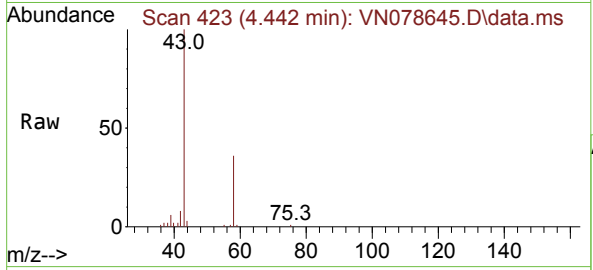




#16
 Acetone
 Concen: 45.956 ug/l
 RT: 4.442 min Scan# 411
 Delta R.T. -0.000 min
 Lab File: VN078645.D
 Acq: 25 Jul 2023 14:23

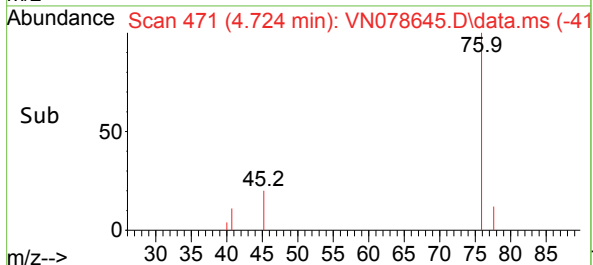
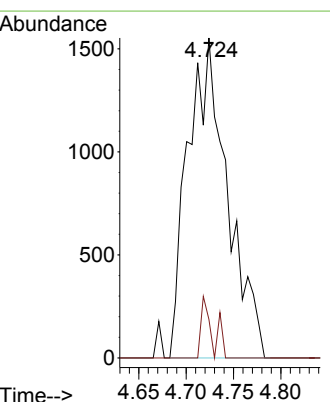
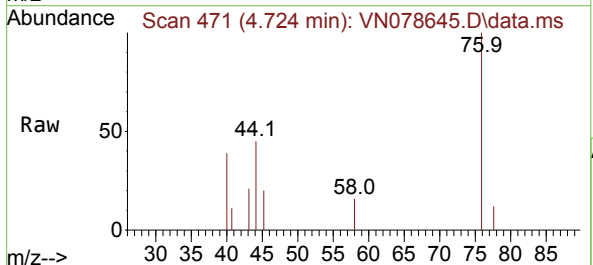
Instrument : MSVOA_N
 ClientSampleId : PB154393TB

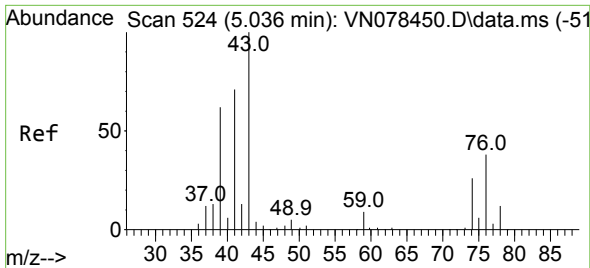
Tgt Ion	Resp	Ion Ratio	Lower	Upper
43	82417	100		
58		35.5	28.0	42.0



#17
 Carbon Disulfide
 Concen: 0.345 ug/l
 RT: 4.724 min Scan# 471
 Delta R.T. 0.006 min
 Lab File: VN078645.D
 Acq: 25 Jul 2023 14:23

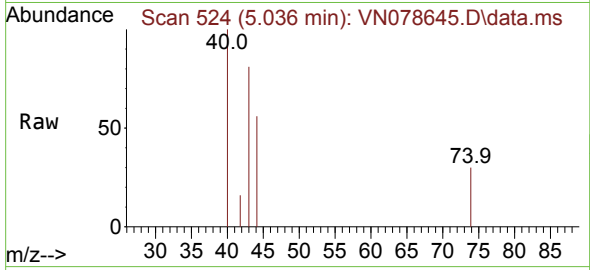
Tgt Ion	Resp	Ion Ratio	Lower	Upper
76	4521	100		
78		12.0	7.4	11.0



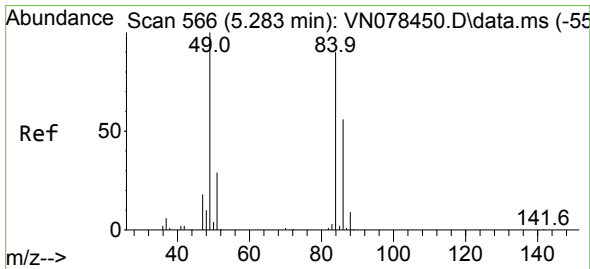
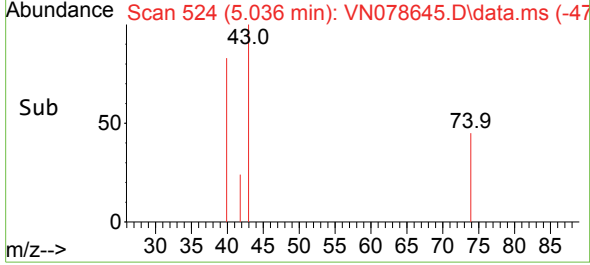
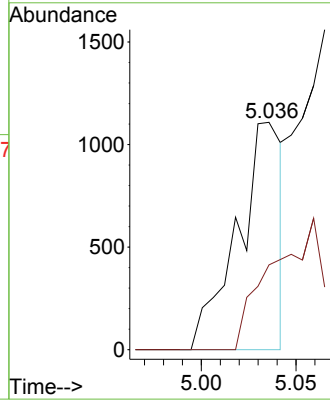


#18
 Methyl Acetate
 Concen: 0.238 ug/l
 RT: 5.036 min Scan# 51
 Delta R.T. -0.000 min
 Lab File: VN078645.D
 Acq: 25 Jul 2023 14:23

Instrument : MSVOA_N
 ClientSampleId : PB154393TB

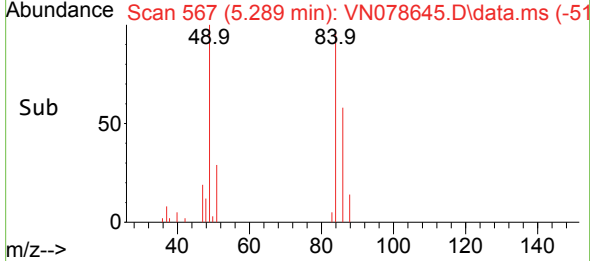
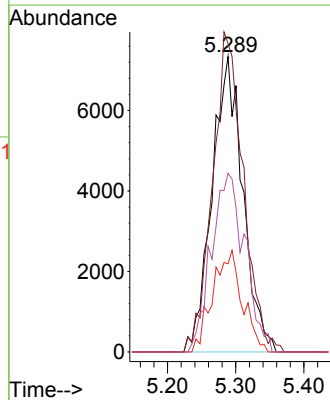
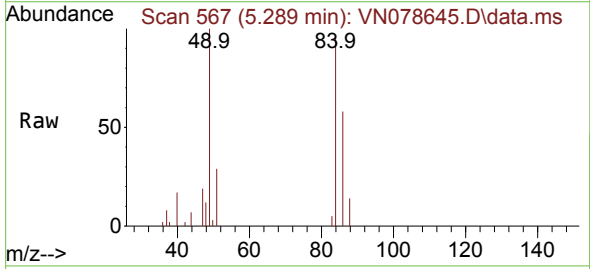


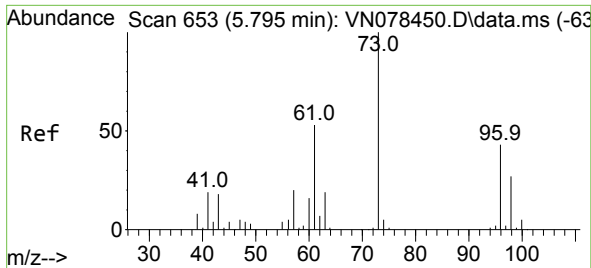
Tgt Ion: 43 Resp: 1807
 Ion Ratio Lower Upper
 43 100
 74 0.0 26.2 39.4#



#20
 Methylene Chloride
 Concen: 3.357 ug/l
 RT: 5.289 min Scan# 567
 Delta R.T. 0.006 min
 Lab File: VN078645.D
 Acq: 25 Jul 2023 14:23

Tgt Ion: 84 Resp: 23139
 Ion Ratio Lower Upper
 84 100
 49 104.4 79.7 119.5
 51 29.9 25.2 37.8
 86 60.5 53.3 79.9

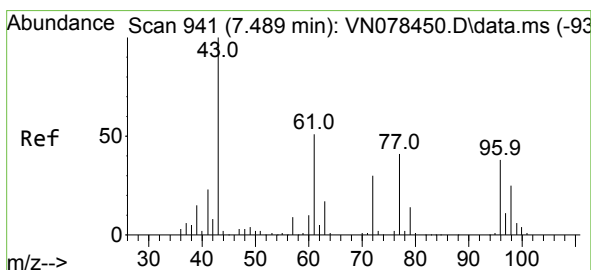
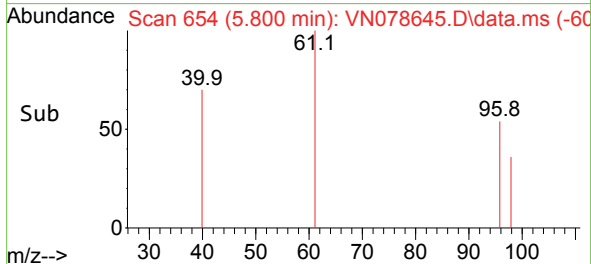
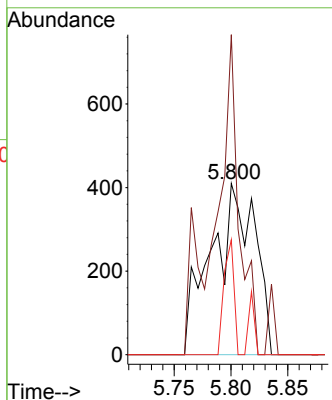
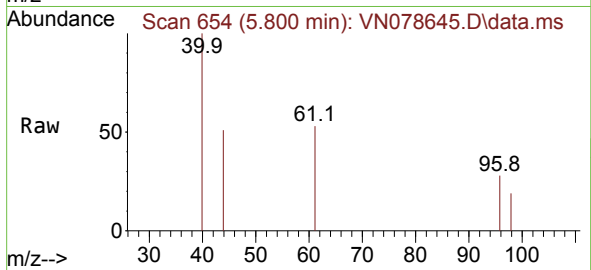




#21
 trans-1,2-Dichloroethene
 Concen: 0.216 ug/l
 RT: 5.800 min Scan# 611
 Delta R.T. 0.005 min
 Lab File: VN078645.D
 Acq: 25 Jul 2023 14:23

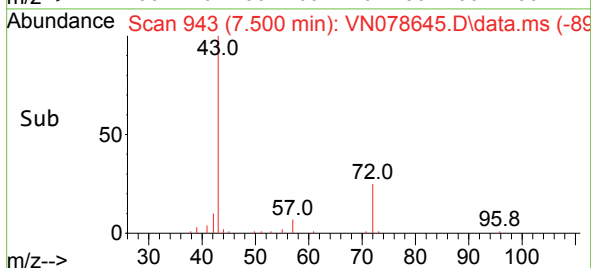
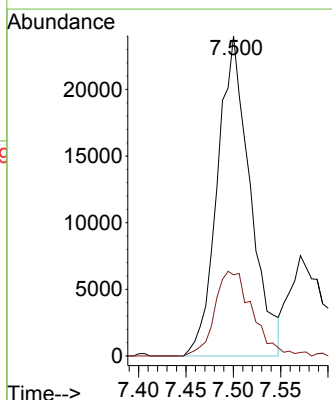
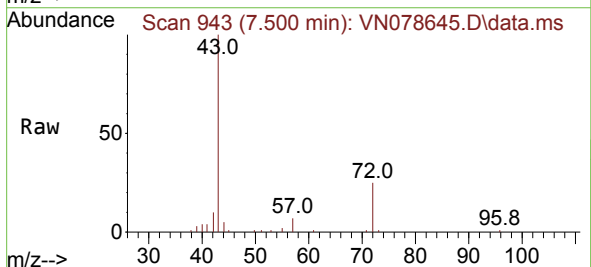
Instrument : MSVOA_N
 ClientSampleId : PB154393TB

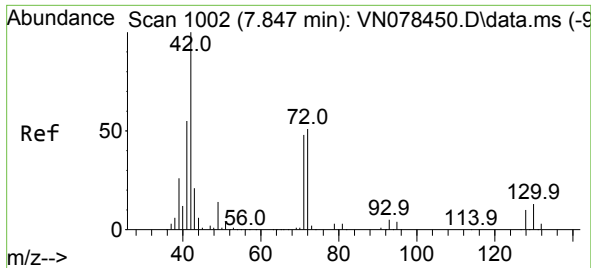
Tgt Ion: 96 Resp: 1104
 Ion Ratio Lower Upper
 96 100
 61 186.8 90.1 135.1#
 98 67.1 46.4 69.6



#25
 2-Butanone
 Concen: 20.422 ug/l
 RT: 7.500 min Scan# 943
 Delta R.T. 0.011 min
 Lab File: VN078645.D
 Acq: 25 Jul 2023 14:23

Tgt Ion: 43 Resp: 57653
 Ion Ratio Lower Upper
 43 100
 72 25.4 30.2 45.2#

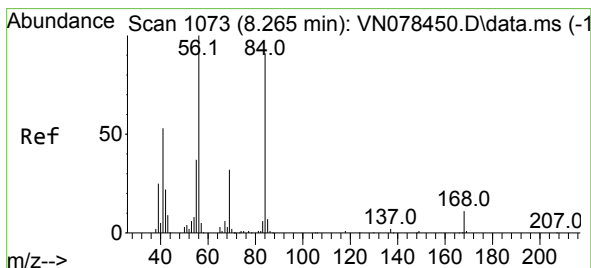
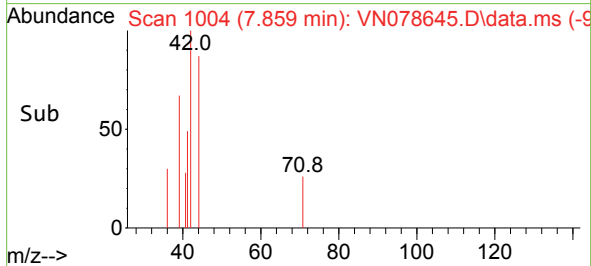
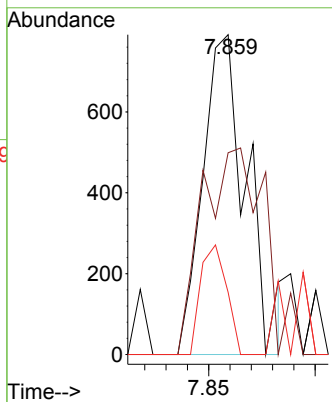
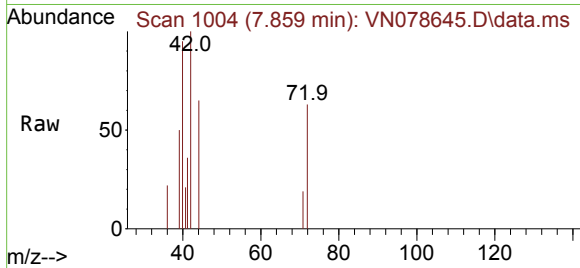




#29
 Tetrahydrofuran
 Concen: 0.612 ug/l
 RT: 7.859 min Scan# 1004
 Delta R.T. 0.012 min
 Lab File: VN078645.D
 Acq: 25 Jul 2023 14:23

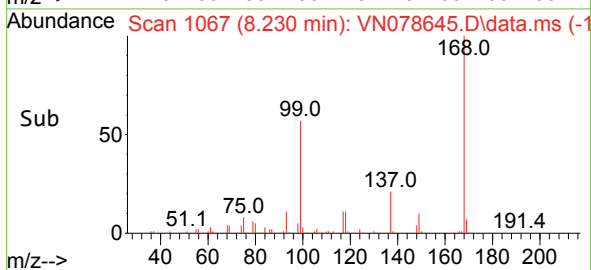
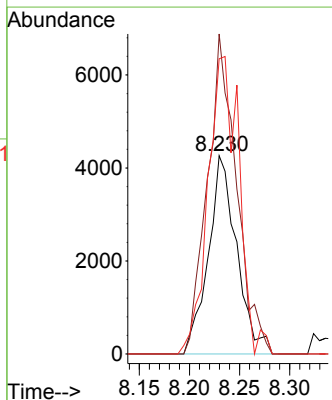
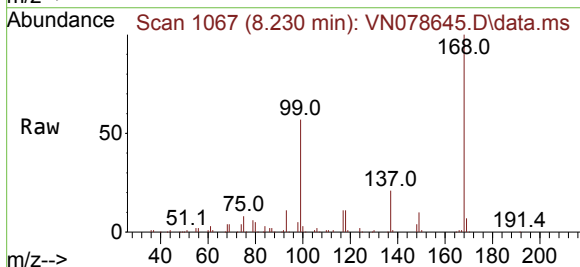
Instrument : MSVOA_N
 ClientSampleId : PB154393TB

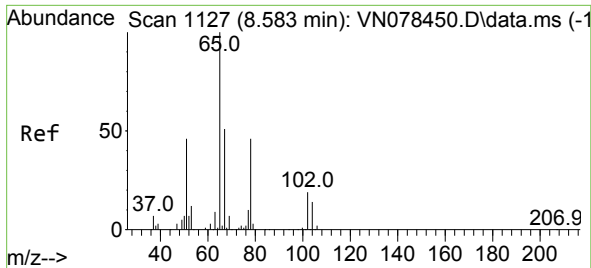
Tgt Ion	Resp	Lower	Upper
42	1134		
42	100		
72	92.1	49.8	74.6#
71	20.4	47.4	71.2#



#31
 Cyclohexane
 Concen: 1.080 ug/l
 RT: 8.230 min Scan# 1067
 Delta R.T. -0.035 min
 Lab File: VN078645.D
 Acq: 25 Jul 2023 14:23

Tgt Ion	Resp	Lower	Upper
56	8403		
56	100		
69	161.4	26.8	40.2#
84	148.9	81.8	122.6#





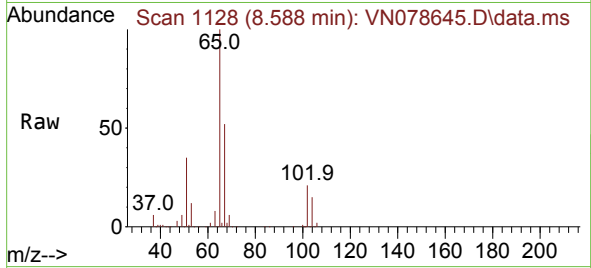
#33
 1,2-Dichloroethane-d4
 Concen: 45.834 ug/l
 RT: 8.588 min Scan# 1128
 Delta R.T. 0.005 min
 Lab File: VN078645.D
 Acq: 25 Jul 2023 14:23

Instrument :

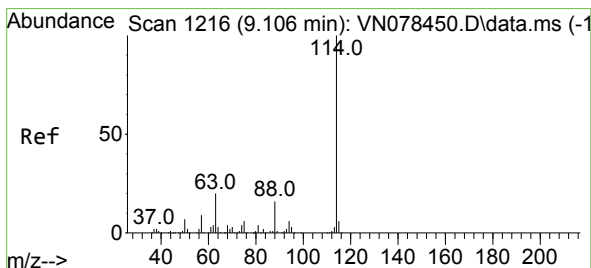
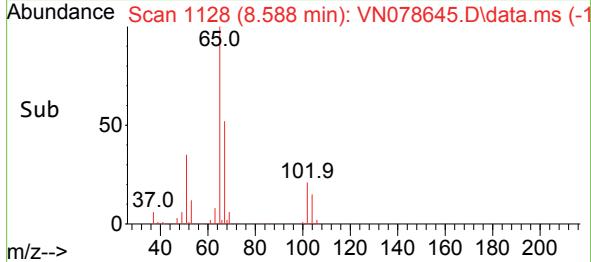
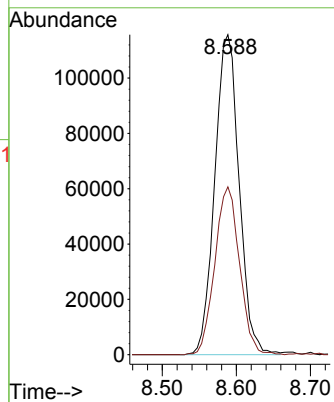
MSVOA_N

ClientSampleId :

PB154393TB

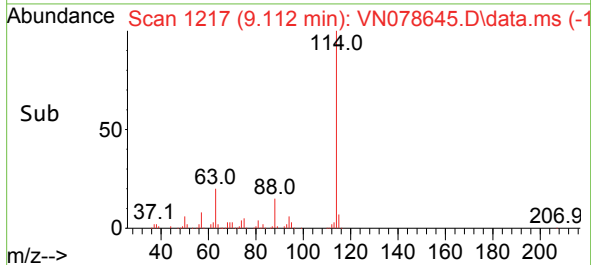
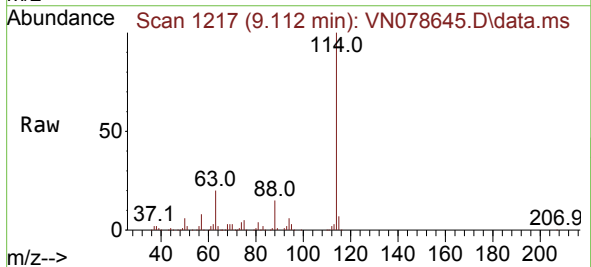
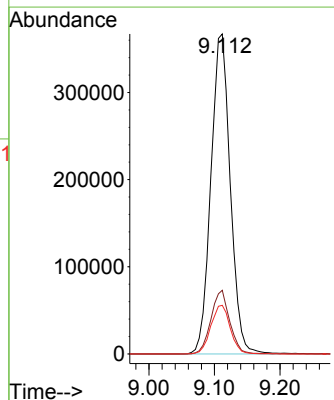


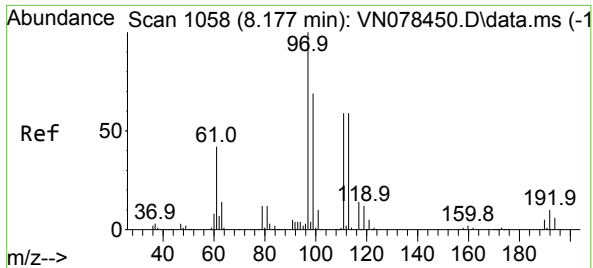
Tgt Ion: 65 Resp: 263878
 Ion Ratio Lower Upper
 65 100
 67 53.2 0.0 106.6



#34
 1,4-Difluorobenzene
 Concen: 50.000 ug/l
 RT: 9.112 min Scan# 1217
 Delta R.T. 0.006 min
 Lab File: VN078645.D
 Acq: 25 Jul 2023 14:23

Tgt Ion: 114 Resp: 752667
 Ion Ratio Lower Upper
 114 100
 63 19.9 0.0 36.4
 88 15.2 0.0 30.6



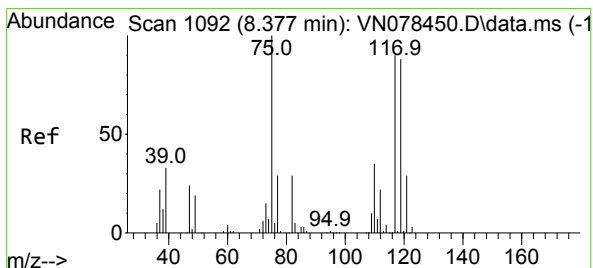
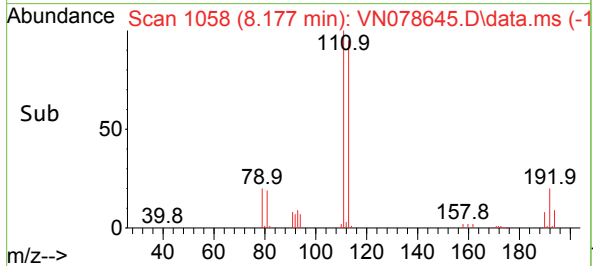
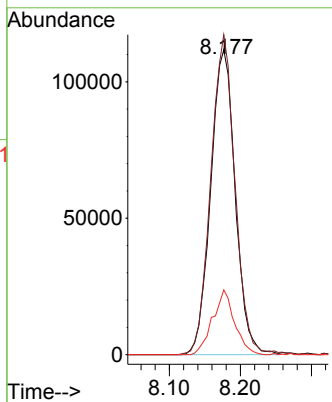
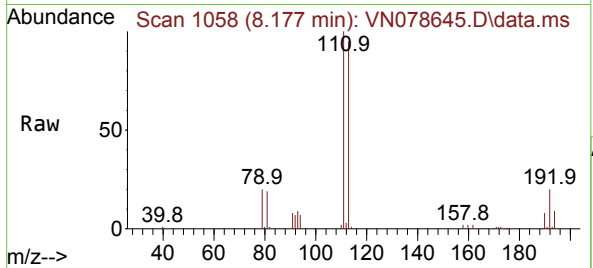


#35
 Dibromofluoromethane
 Concen: 52.369 ug/l
 RT: 8.177 min Scan# 1058
 Delta R.T. -0.000 min
 Lab File: VN078645.D
 Acq: 25 Jul 2023 14:23

Instrument : MSVOA_N
 ClientSampleId : PB154393TB

Tgt Ion:113 Resp: 267569

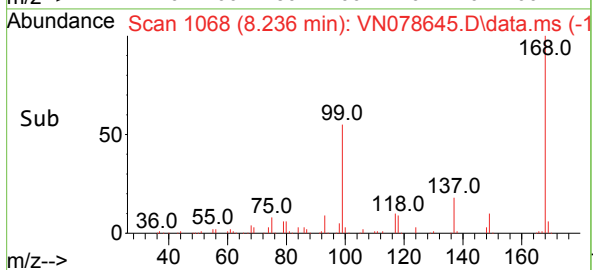
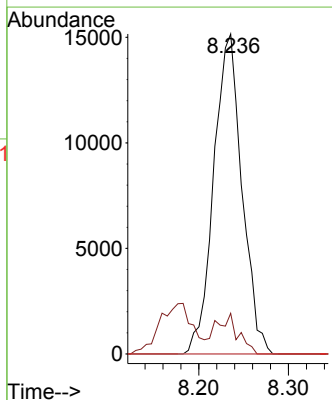
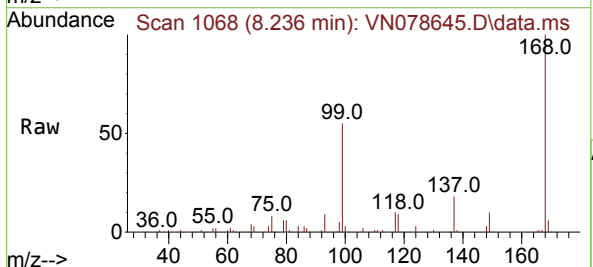
Ion	Ratio	Lower	Upper
113	100		
111	103.8	82.6	123.8
192	19.0	12.7	19.1

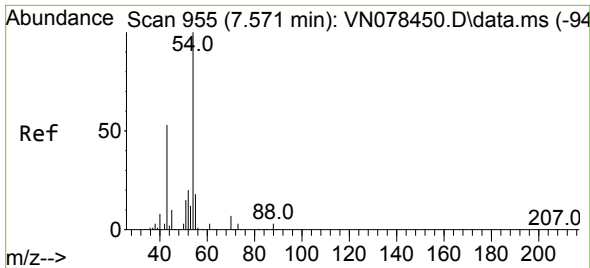


#36
 1,1-Dichloropropene
 Concen: 4.496 ug/l
 RT: 8.236 min Scan# 1068
 Delta R.T. -0.141 min
 Lab File: VN078645.D
 Acq: 25 Jul 2023 14:23

Tgt Ion: 75 Resp: 33167

Ion	Ratio	Lower	Upper
75	100		
110	10.1	19.1	57.3#
77	0.0	25.0	37.4#





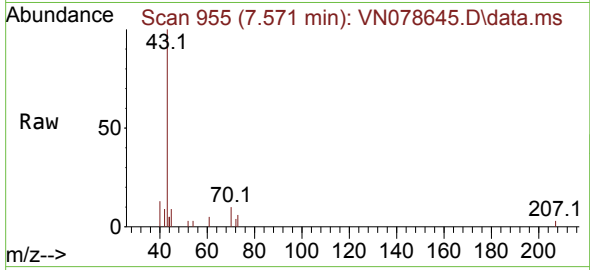
#37
 Ethyl Acetate
 Concen: 2.953 ug/l
 RT: 7.571 min Scan# 91
 Delta R.T. -0.000 min
 Lab File: VN078645.D
 Acq: 25 Jul 2023 14:23

Instrument :

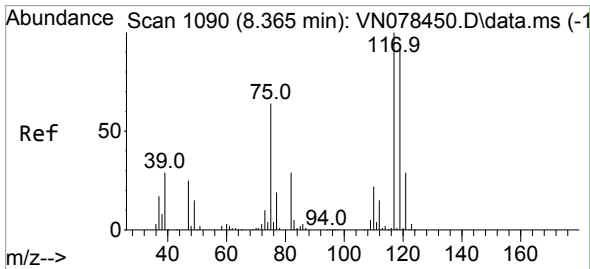
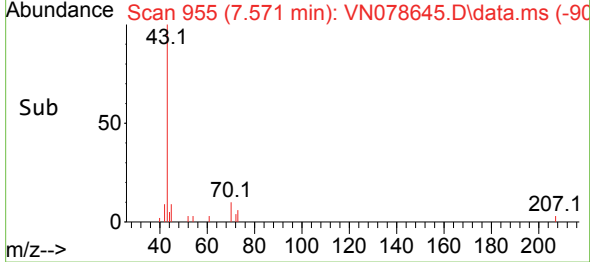
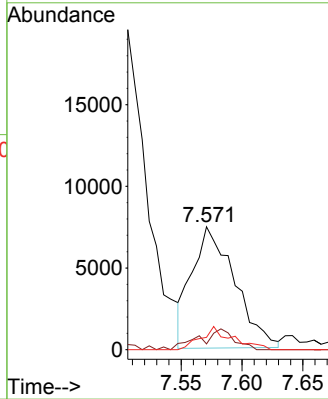
MSVOA_N

ClientSampleId :

PB154393TB

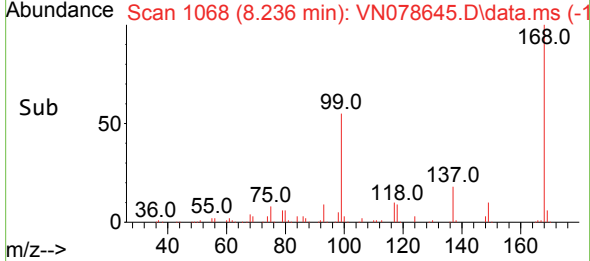
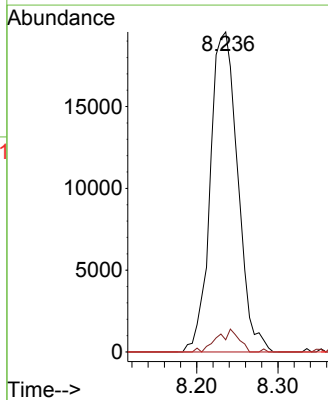
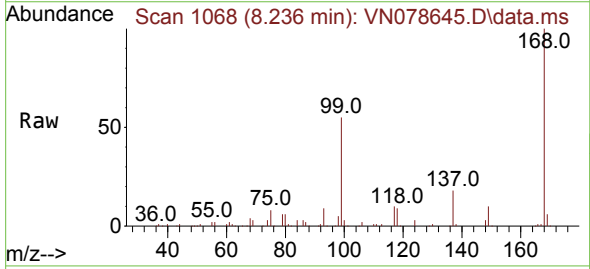


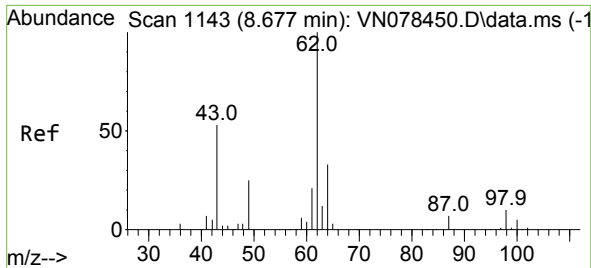
Tgt Ion: 43 Resp: 18160
 Ion Ratio Lower Upper
 43 100
 61 14.1 13.2 19.8
 70 14.0 11.3 16.9



#38
 Carbon Tetrachloride
 Concen: 5.739 ug/l
 RT: 8.236 min Scan# 1068
 Delta R.T. -0.129 min
 Lab File: VN078645.D
 Acq: 25 Jul 2023 14:23

Tgt Ion:117 Resp: 46017
 Ion Ratio Lower Upper
 117 100
 119 3.8 77.3 115.9#
 121 0.0 23.3 34.9#



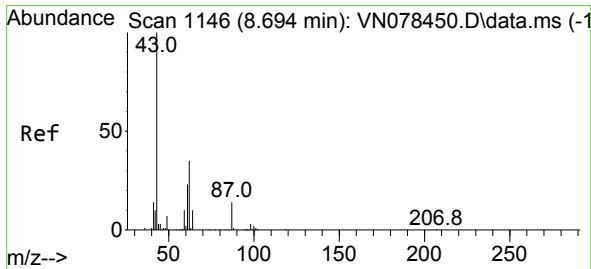
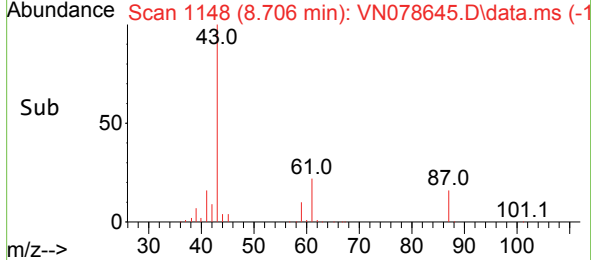
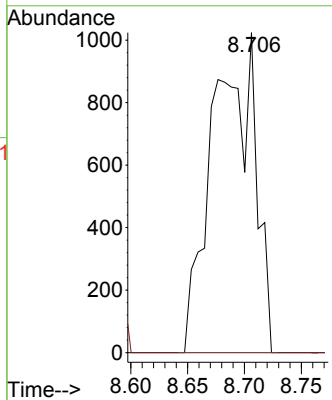
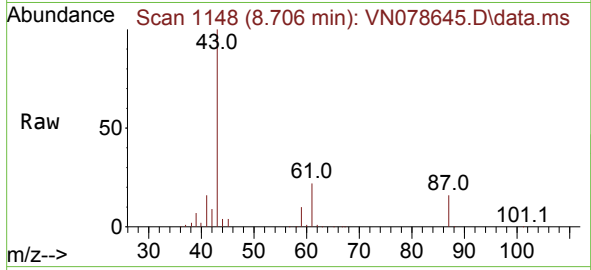


#42
 1,2-Dichloroethane
 Concen: 0.359 ug/l
 RT: 8.706 min Scan# 1148
 Delta R.T. 0.029 min
 Lab File: VN078645.D
 Acq: 25 Jul 2023 14:23

Instrument : MSVOA_N
 ClientSampleId : PB154393TB

Tgt Ion: 62 Resp: 2667

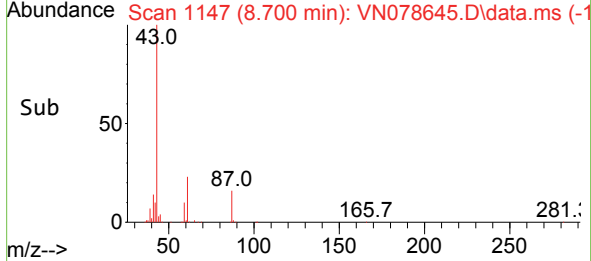
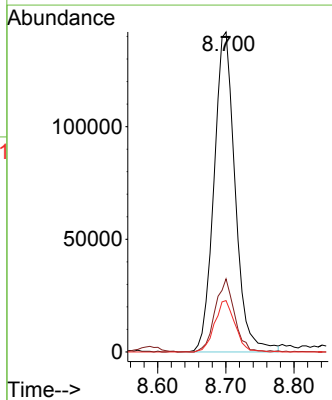
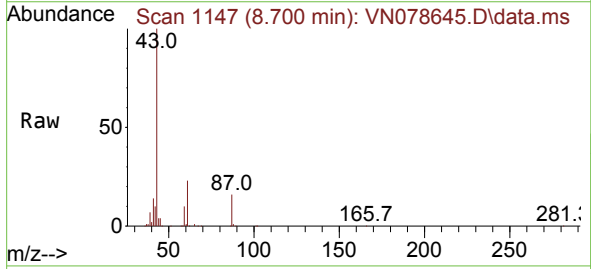
Ion	Ratio	Lower	Upper
62	100		
98	0.0	0.0	19.8

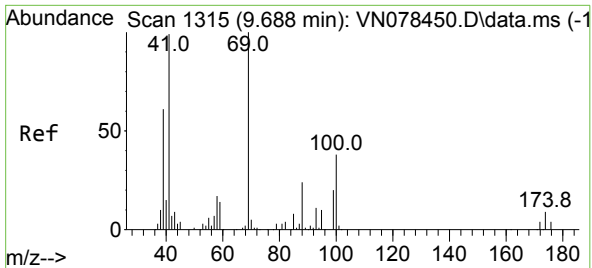


#43
 Isopropyl Acetate
 Concen: 30.365 ug/l
 RT: 8.700 min Scan# 1147
 Delta R.T. 0.006 min
 Lab File: VN078645.D
 Acq: 25 Jul 2023 14:23

Tgt Ion: 43 Resp: 307455

Ion	Ratio	Lower	Upper
43	100		
61	20.9	24.7	37.1#
87	15.5	14.6	21.8

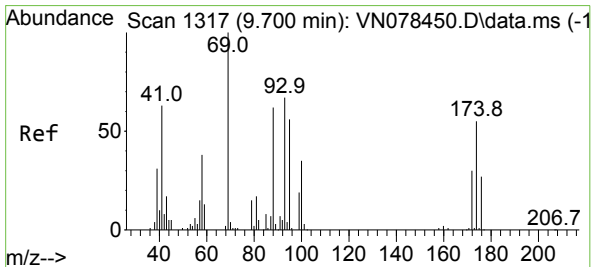
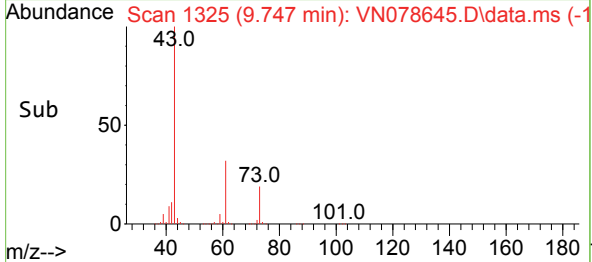
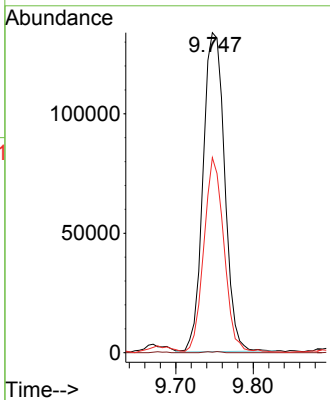
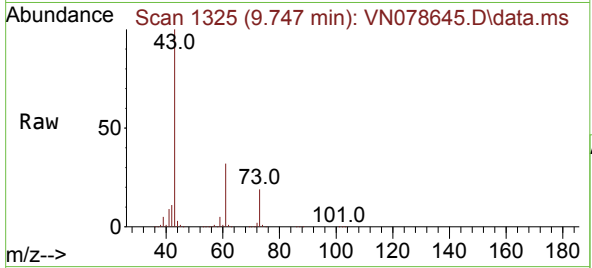




#48
 Methyl methacrylate
 Concen: 54.968 ug/l
 RT: 9.747 min Scan# 11
 Delta R.T. 0.059 min
 Lab File: VN078645.D
 Acq: 25 Jul 2023 14:23

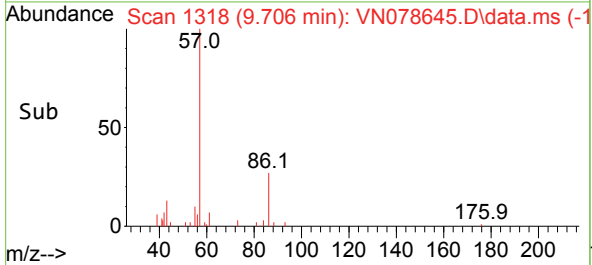
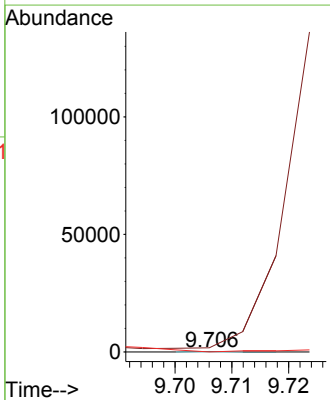
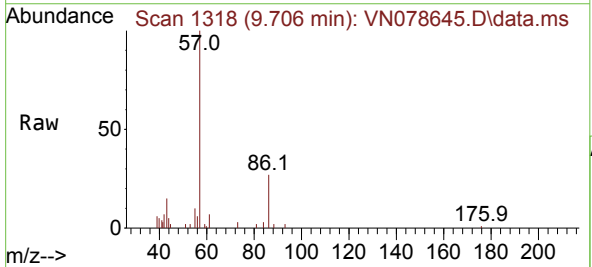
Instrument : MSVOA_N
 ClientSampleId : PB154393TB

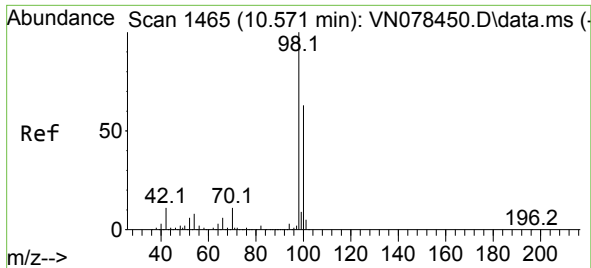
Tgt Ion	Resp	Lower	Upper
41	100		
69	0.2	90.4	135.6#
39	57.1	54.6	81.8



#49
 1,4-Dioxane
 Concen: 0.635 ug/l
 RT: 9.706 min Scan# 1318
 Delta R.T. 0.006 min
 Lab File: VN078645.D
 Acq: 25 Jul 2023 14:23

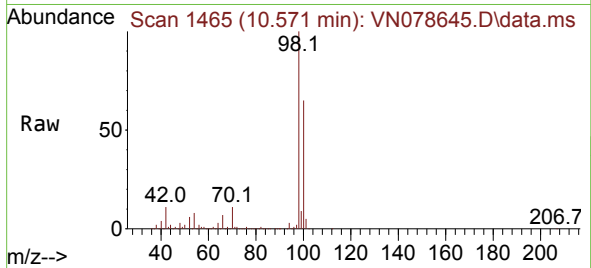
Tgt Ion	Resp	Lower	Upper
88	100		
43	0.0	17.0	25.6#
58	0.0	47.0	70.4#



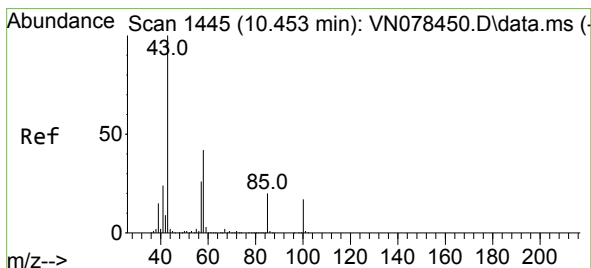
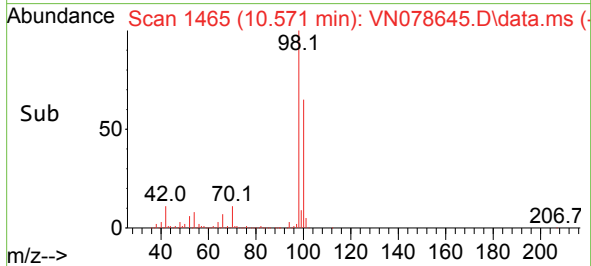
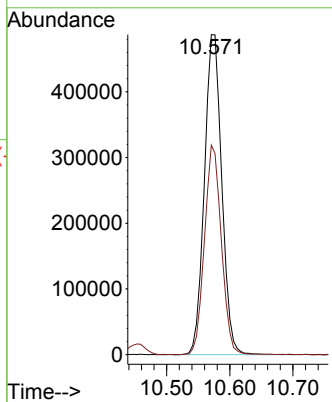


#50
 Toluene-d8
 Concen: 48.286 ug/l
 RT: 10.571 min Scan# 1465
 Delta R.T. -0.000 min
 Lab File: VN078645.D
 Acq: 25 Jul 2023 14:23

Instrument : MSVOA_N
 ClientSampleId : PB154393TB

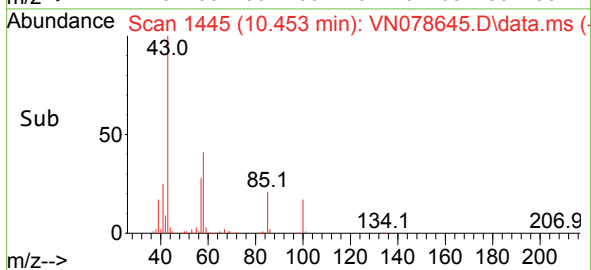
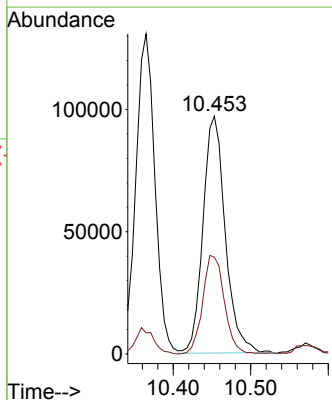
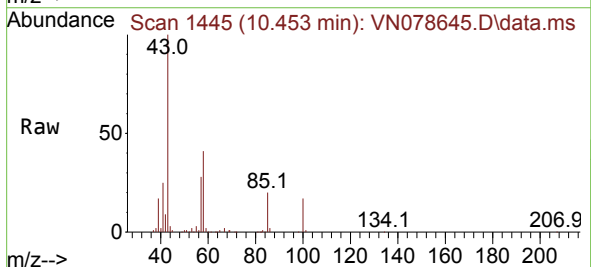


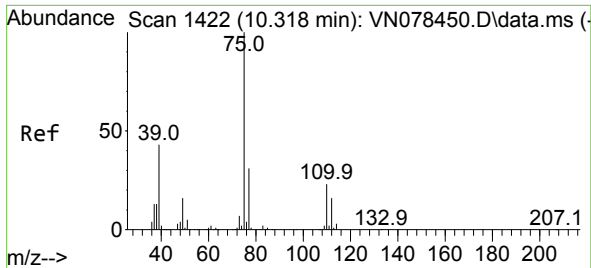
Tgt Ion: 98 Resp: 931986
 Ion Ratio Lower Upper
 98 100
 100 63.7 52.0 78.0



#51
 4-Methyl-2-Pentanone
 Concen: 32.128 ug/l
 RT: 10.453 min Scan# 1445
 Delta R.T. 0.000 min
 Lab File: VN078645.D
 Acq: 25 Jul 2023 14:23

Tgt Ion: 43 Resp: 193493
 Ion Ratio Lower Upper
 43 100
 58 40.5 36.6 54.8





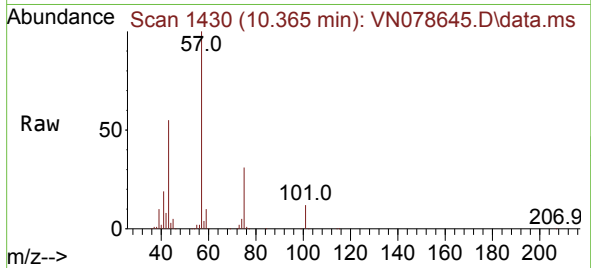
#54
 cis-1,3-Dichloropropene
 Concen: 14.602 ug/l
 RT: 10.365 min Scan# 14
 Delta R.T. 0.047 min
 Lab File: VN078645.D
 Acq: 25 Jul 2023 14:23

Instrument :

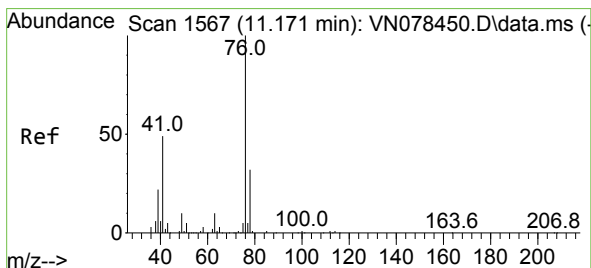
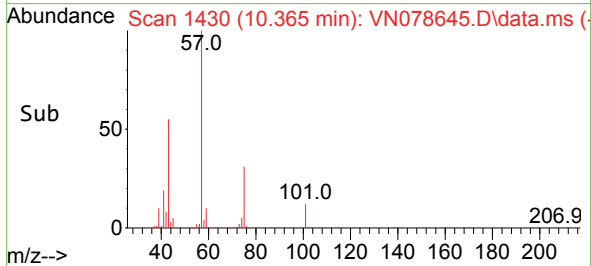
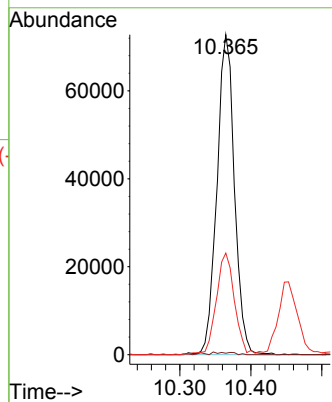
MSVOA_N

ClientSampleId :

PB154393TB

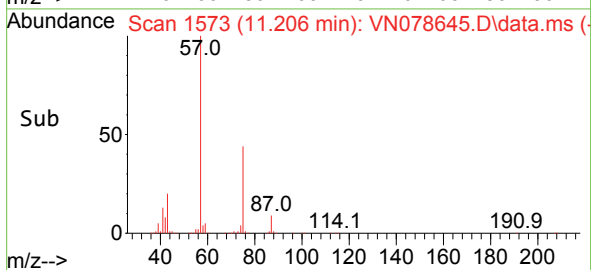
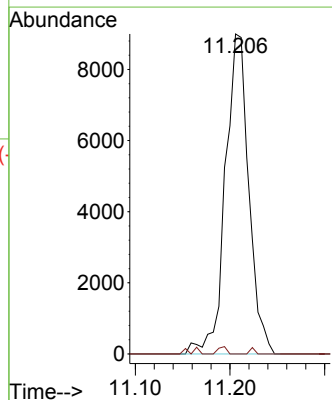
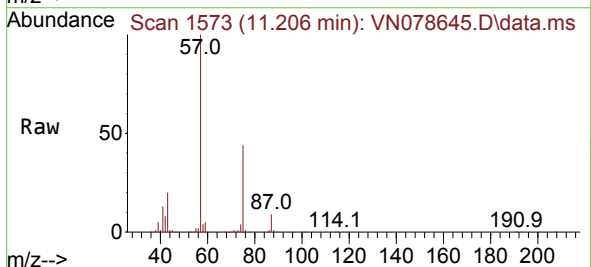


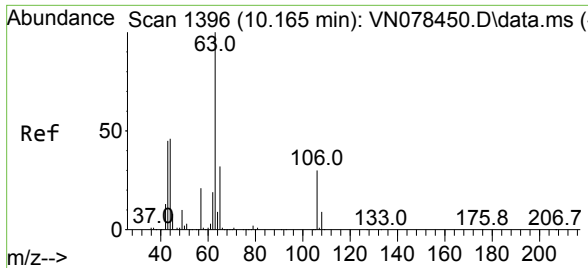
Tgt Ion: 75 Resp: 124533
 Ion Ratio Lower Upper
 75 100
 77 0.4 26.1 39.1#
 39 31.7 31.6 47.4



#57
 1,3-Dichloropropane
 Concen: 1.704 ug/l
 RT: 11.206 min Scan# 1573
 Delta R.T. 0.035 min
 Lab File: VN078645.D
 Acq: 25 Jul 2023 14:23

Tgt Ion: 76 Resp: 15466
 Ion Ratio Lower Upper
 76 100
 78 0.8 26.1 39.1#

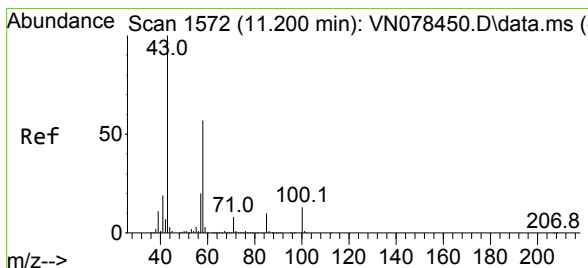
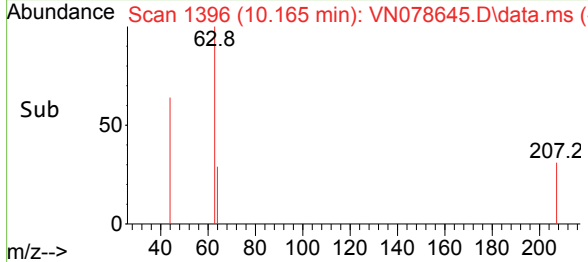
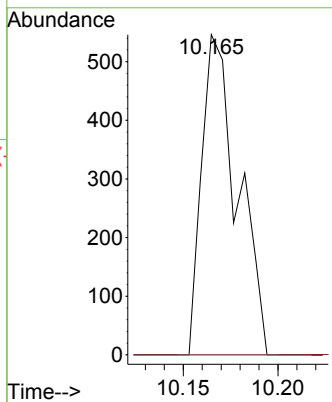
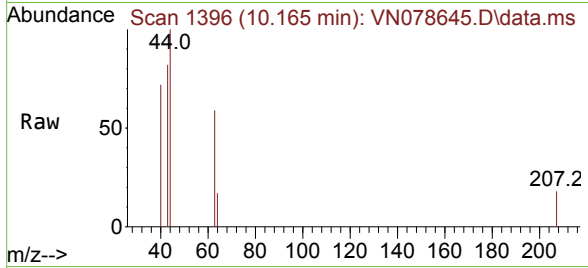




#58
 2-Chloroethyl Vinyl ether
 Concen: 0.271 ug/l
 RT: 10.165 min Scan# 11
 Delta R.T. -0.000 min
 Lab File: VN078645.D
 Acq: 25 Jul 2023 14:23

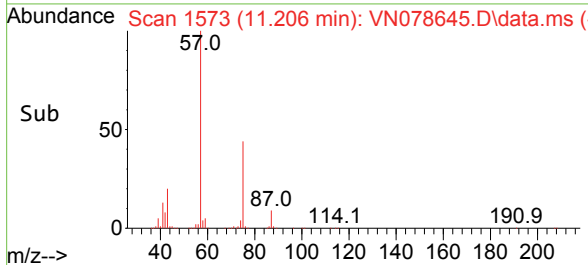
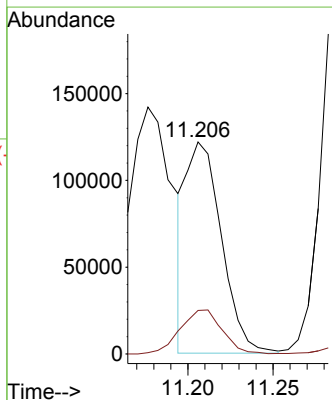
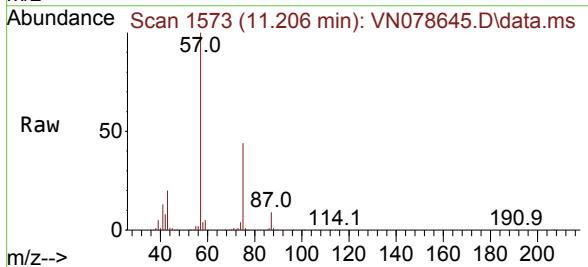
Instrument : MSVOA_N
 ClientSampleId : PB154393TB

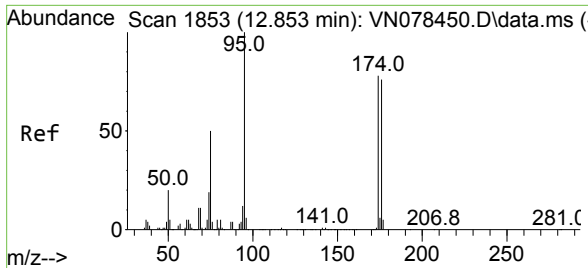
Tgt Ion: 63 Resp: 720
 Ion Ratio Lower Upper
 63 100
 106 0.0 26.2 39.4#



#59
 2-Hexanone
 Concen: 41.002 ug/l
 RT: 11.206 min Scan# 1573
 Delta R.T. 0.006 min
 Lab File: VN078645.D
 Acq: 25 Jul 2023 14:23

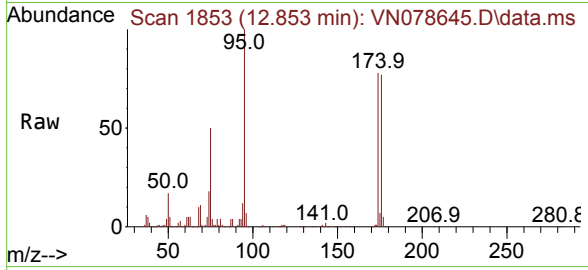
Tgt Ion: 43 Resp: 175501
 Ion Ratio Lower Upper
 43 100
 58 25.0 31.7 95.1#





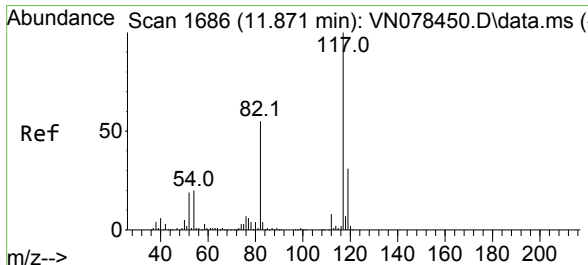
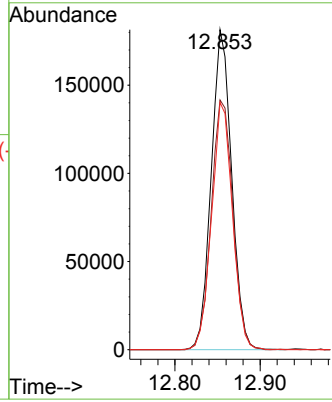
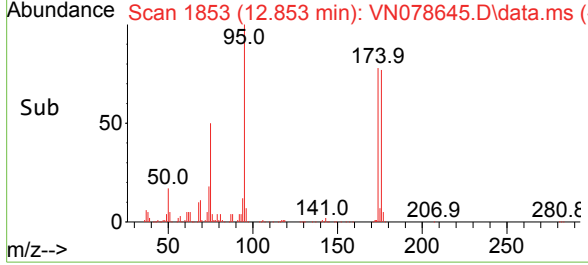
#62
 4-Bromofluorobenzene
 Concen: 50.757 ug/l
 RT: 12.853 min Scan# 1853
 Delta R.T. -0.000 min
 Lab File: VN078645.D
 Acq: 25 Jul 2023 14:23

Instrument : MSVOA_N
 ClientSampleId : PB154393TB

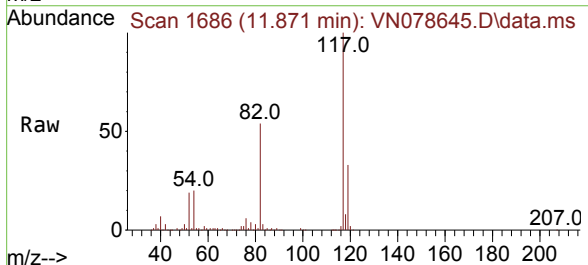


Tgt Ion: 95 Resp: 301765

Ion	Ratio	Lower	Upper
95	100		
174	82.8	0.0	143.8
176	79.0	0.0	135.8

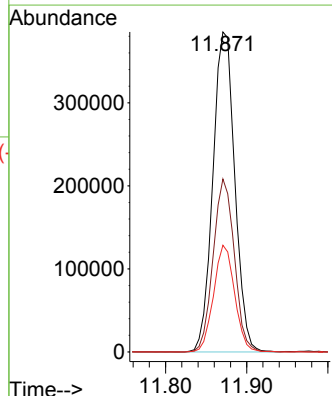
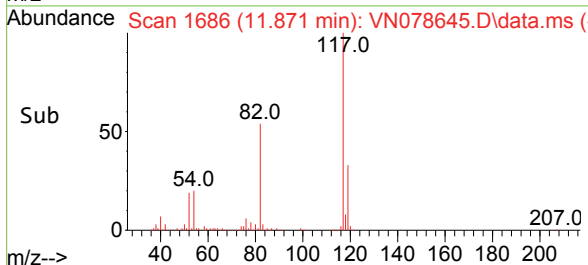


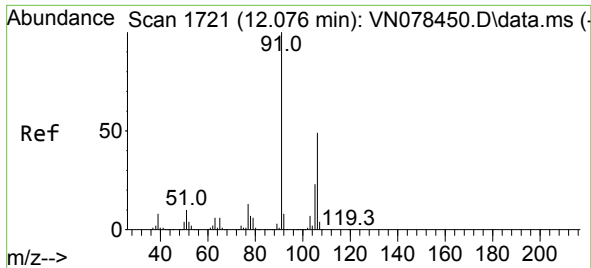
#63
 Chlorobenzene-d5
 Concen: 50.000 ug/l
 RT: 11.871 min Scan# 1686
 Delta R.T. -0.000 min
 Lab File: VN078645.D
 Acq: 25 Jul 2023 14:23



Tgt Ion: 117 Resp: 724223

Ion	Ratio	Lower	Upper
117	100		
82	54.1	44.0	66.0
119	33.3	25.6	38.4

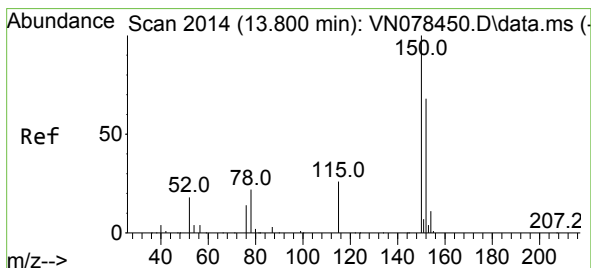
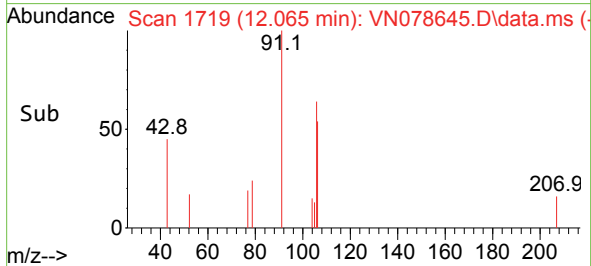
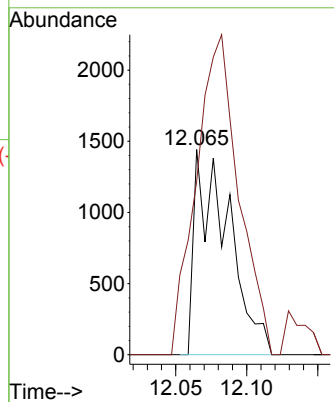
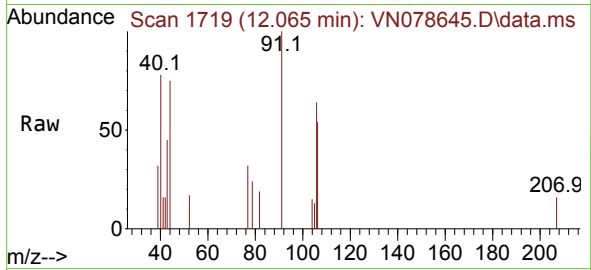




#68
 m/p-Xylenes
 Concen: 0.236 ug/l
 RT: 12.065 min Scan# 1719
 Delta R.T. -0.011 min
 Lab File: VN078645.D
 Acq: 25 Jul 2023 14:23

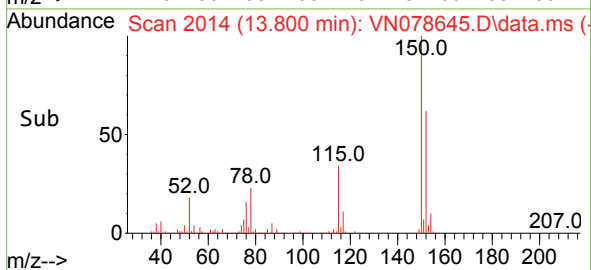
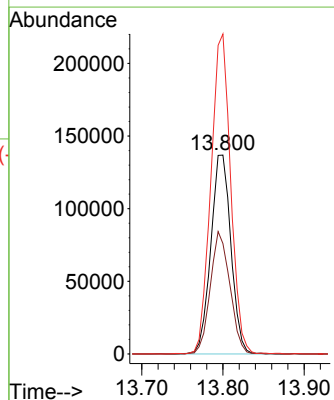
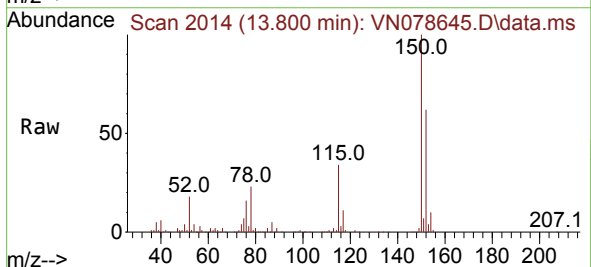
Instrument : MSVOA_N
 ClientSampleId : PB154393TB

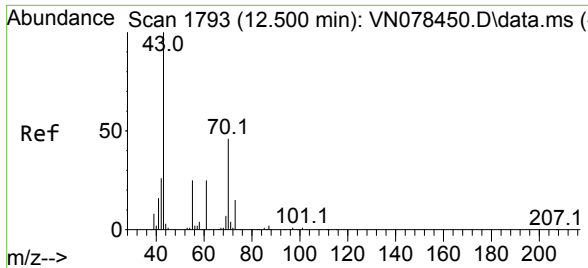
Tgt Ion:106 Resp: 2390
 Ion Ratio Lower Upper
 106 100
 91 195.9 159.6 239.4



#72
 1,4-Dichlorobenzene-d4
 Concen: 50.000 ug/l
 RT: 13.800 min Scan# 2014
 Delta R.T. -0.000 min
 Lab File: VN078645.D
 Acq: 25 Jul 2023 14:23

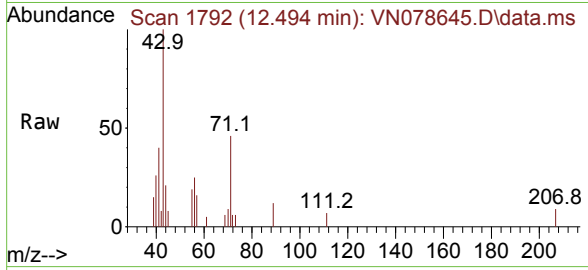
Tgt Ion:152 Resp: 235788
 Ion Ratio Lower Upper
 152 100
 115 59.9 32.3 96.8
 150 158.1 0.0 355.8



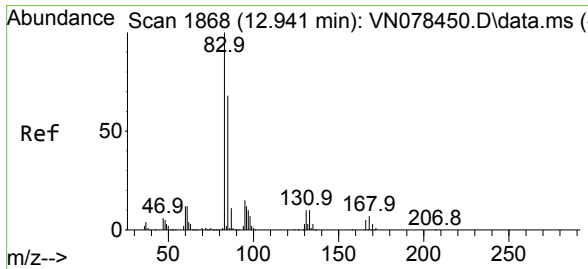
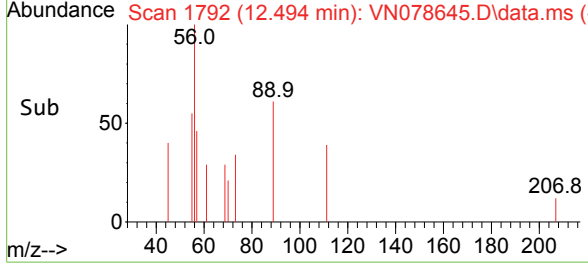
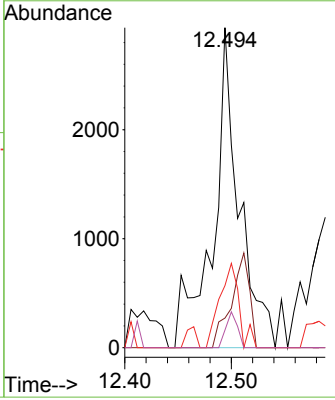


#74
 N-amy1 acetate
 Concen: 0.648 ug/l
 RT: 12.494 min Scan# 11
 Delta R.T. -0.006 min
 Lab File: VN078645.D
 Acq: 25 Jul 2023 14:23

Instrument : MSVOA_N
 ClientSampleId : PB154393TB

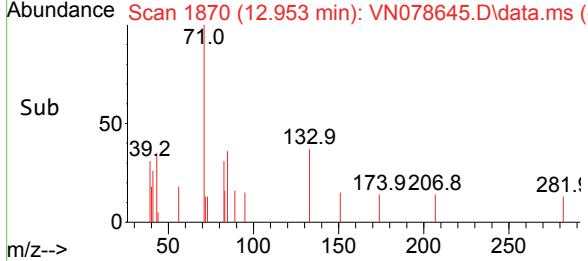
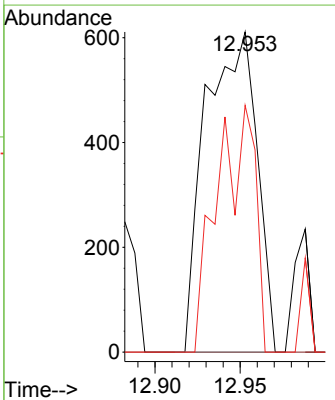
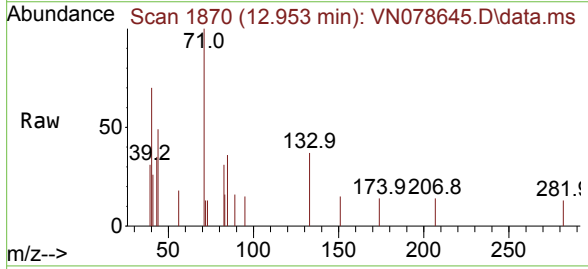


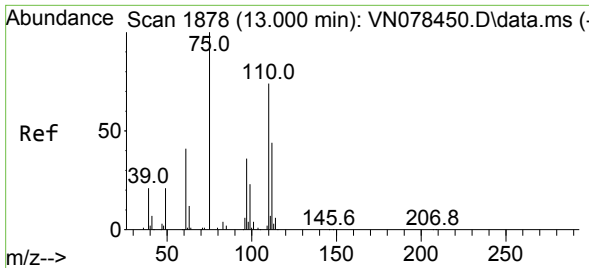
Tgt Ion	Resp	Lower	Upper
43	100		
70	20.8	43.4	65.2#
55	19.8	21.4	32.0#
61	4.9	22.8	34.2#



#75
 1,1,2,2-Tetrachloroethane
 Concen: Below Cal
 RT: 12.953 min Scan# 1870
 Delta R.T. 0.012 min
 Lab File: VN078645.D
 Acq: 25 Jul 2023 14:23

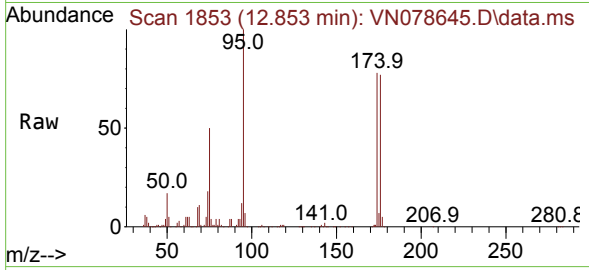
Tgt Ion	Resp	Lower	Upper
83	100		
131	0.0	5.0	15.0#
85	57.3	31.9	95.7



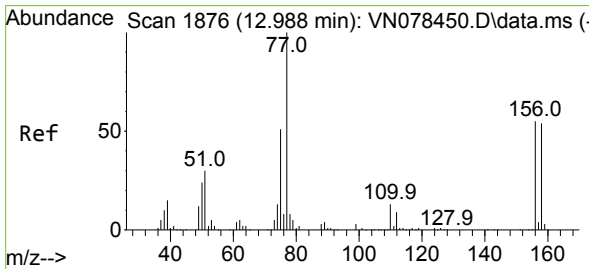
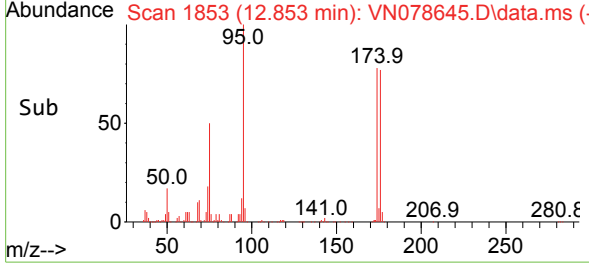
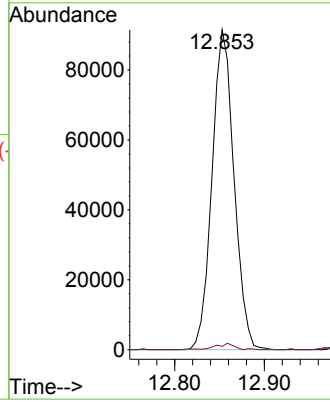


#76
 1,2,3-Trichloropropane
 Concen: 27.304 ug/l
 RT: 12.853 min Scan# 1853
 Delta R.T. -0.147 min
 Lab File: VN078645.D
 Acq: 25 Jul 2023 14:23

Instrument : MSVOA_N
 ClientSampleId : PB154393TB

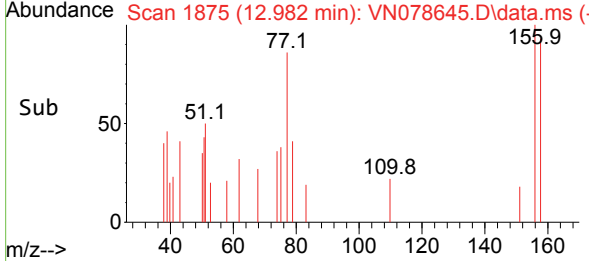
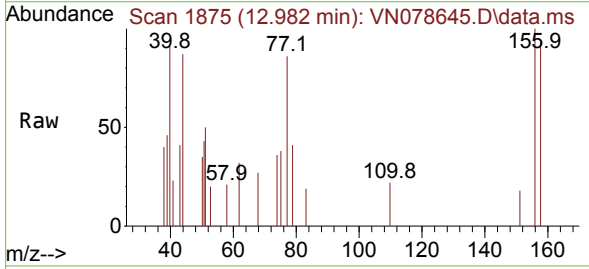
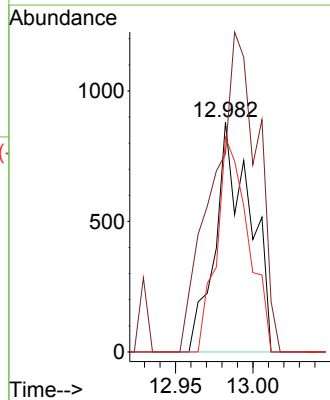


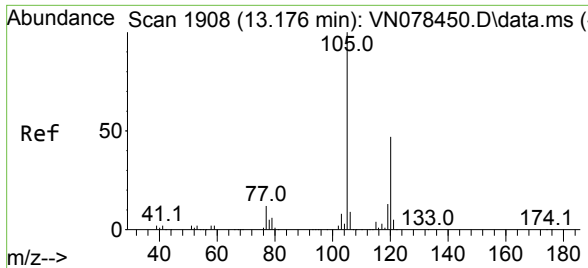
Tgt Ion: 75 Resp: 155612
 Ion Ratio Lower Upper
 75 100
 77 1.8 84.5 253.5#



#77
 Bromobenzene
 Concen: Below Cal
 RT: 12.982 min Scan# 1875
 Delta R.T. -0.006 min
 Lab File: VN078645.D
 Acq: 25 Jul 2023 14:23

Tgt Ion: 156 Resp: 1377
 Ion Ratio Lower Upper
 156 100
 77 175.4 107.7 323.3
 158 84.5 48.4 145.3

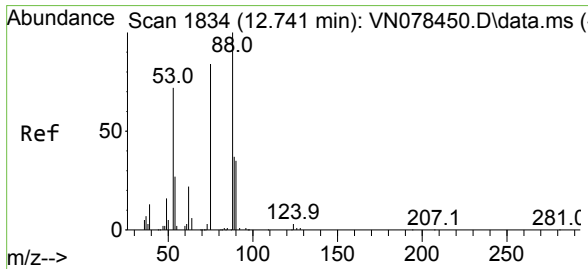
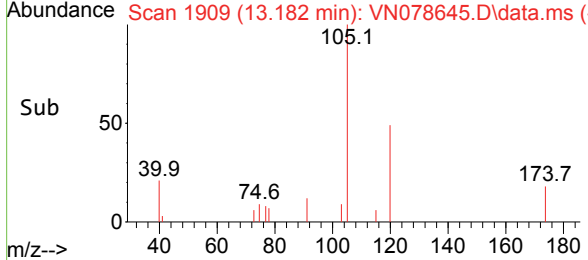
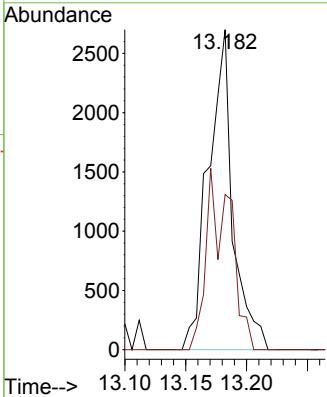
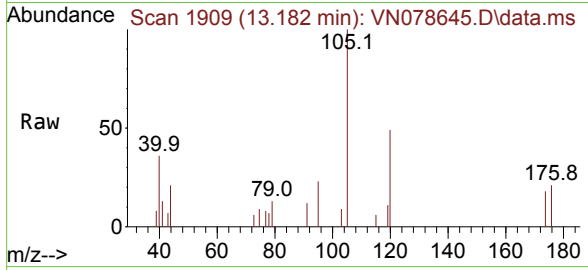




#80
 1,3,5-Trimethylbenzene
 Concen: 0.216 ug/l
 RT: 13.182 min Scan# 1909
 Delta R.T. 0.006 min
 Lab File: VN078645.D
 Acq: 25 Jul 2023 14:23

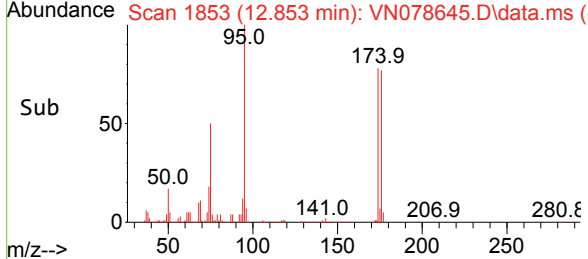
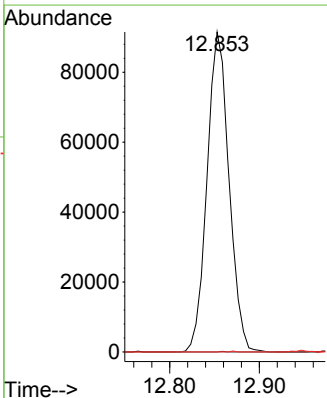
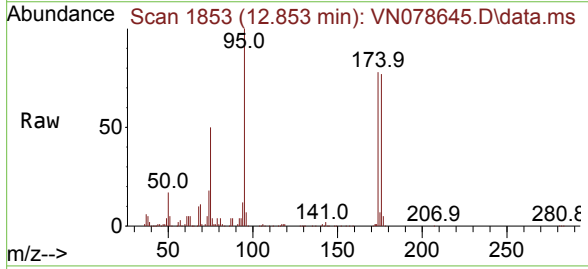
Instrument : MSVOA_N
 ClientSampleId : PB154393TB

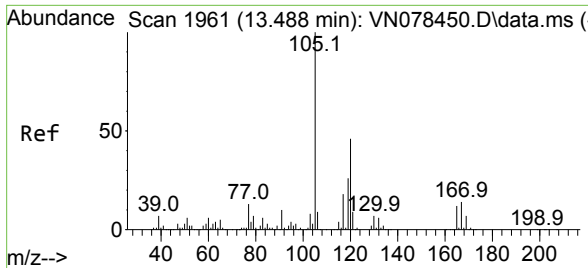
Tgt Ion:105 Resp: 3774
 Ion Ratio Lower Upper
 105 100
 120 56.8 24.1 72.3



#81
 trans-1,4-Dichloro-2-butene
 Concen: 71.749 ug/l
 RT: 12.853 min Scan# 1853
 Delta R.T. 0.112 min
 Lab File: VN078645.D
 Acq: 25 Jul 2023 14:23

Tgt Ion: 75 Resp: 155612
 Ion Ratio Lower Upper
 75 100
 53 0.0 67.4 101.2#
 89 0.1 38.8 58.2#

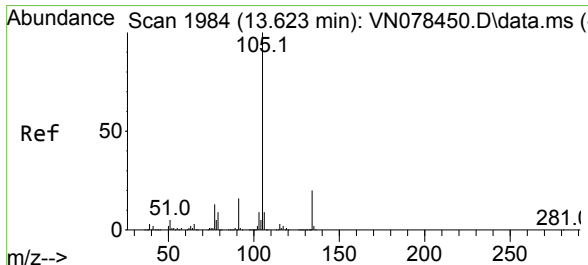
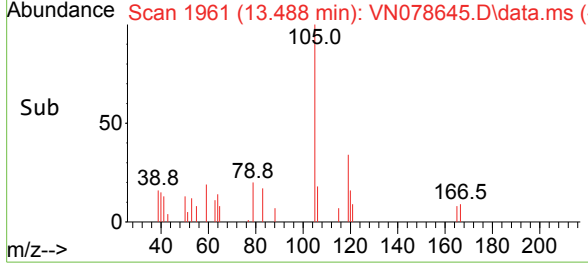
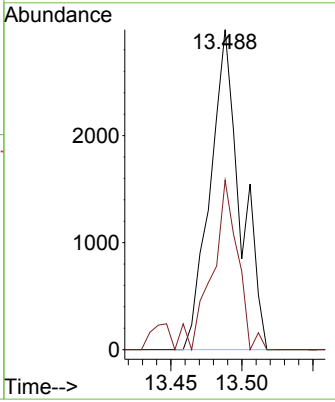
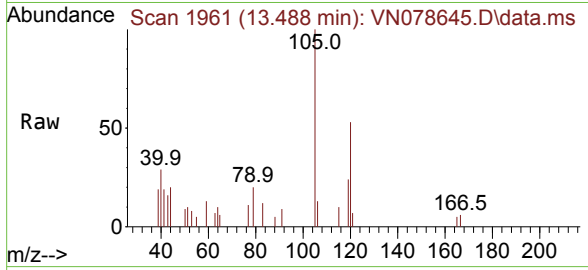




#84
 1,2,4-Trimethylbenzene
 Concen: 0.261 ug/l
 RT: 13.488 min Scan# 1961
 Delta R.T. 0.000 min
 Lab File: VN078645.D
 Acq: 25 Jul 2023 14:23

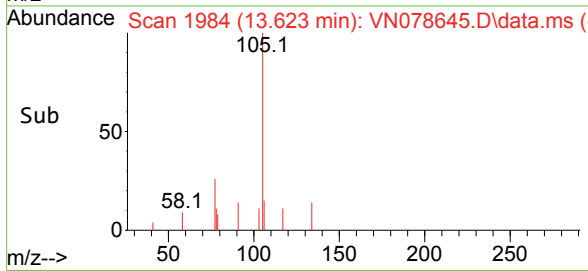
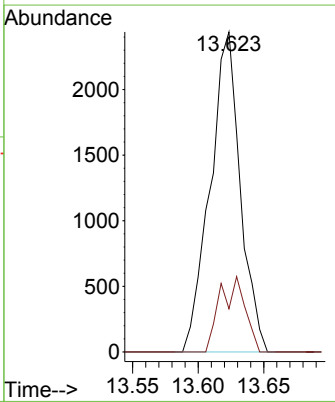
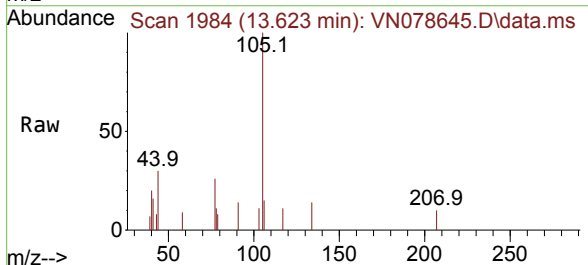
Instrument : MSVOA_N
 ClientSampleId : PB154393TB

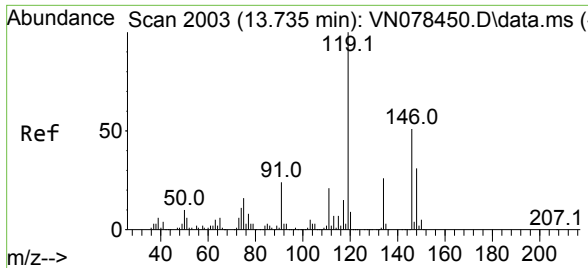
Tgt Ion:105 Resp: 4432
 Ion Ratio Lower Upper
 105 100
 120 45.0 22.0 66.0



#85
 sec-Butylbenzene
 Concen: 0.207 ug/l
 RT: 13.623 min Scan# 1984
 Delta R.T. 0.000 min
 Lab File: VN078645.D
 Acq: 25 Jul 2023 14:23

Tgt Ion:105 Resp: 3891
 Ion Ratio Lower Upper
 105 100
 134 19.7 9.8 29.3

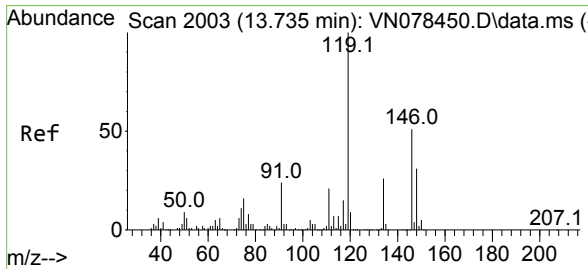
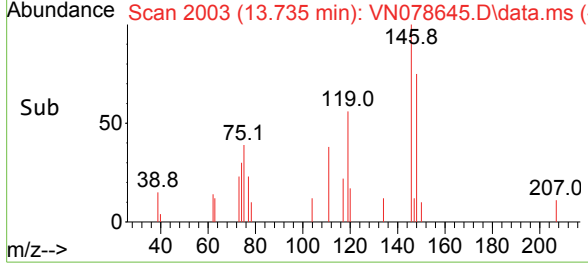
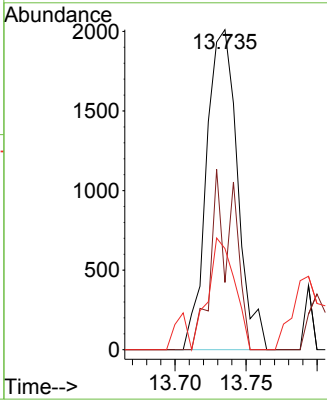
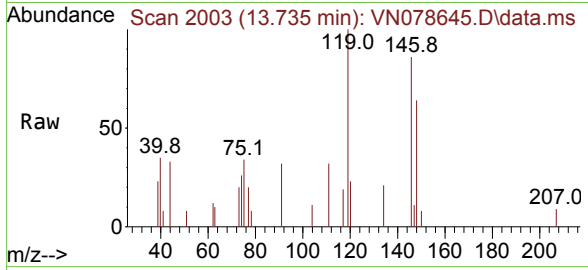




#86
 p-Isopropyltoluene
 Concen: 0.202 ug/l
 RT: 13.735 min Scan# 2003
 Delta R.T. 0.000 min
 Lab File: VN078645.D
 Acq: 25 Jul 2023 14:23

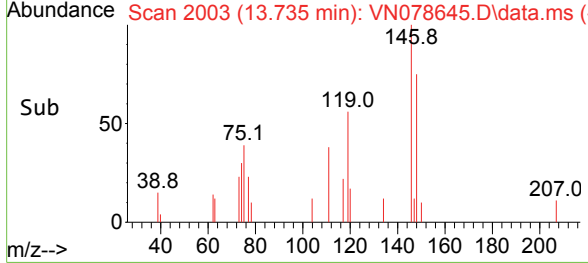
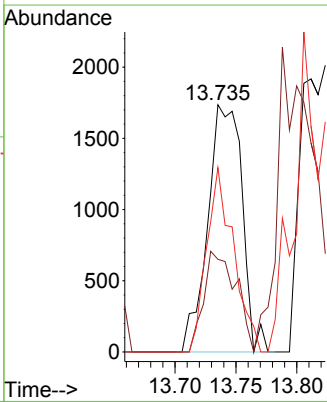
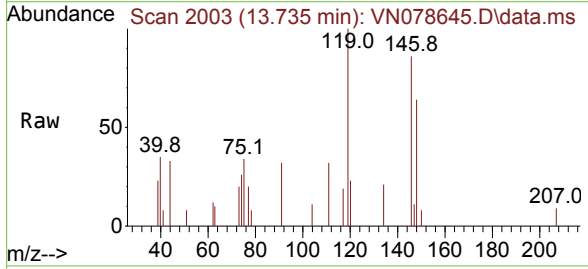
Instrument : MSVOA_N
 ClientSampleId : PB154393TB

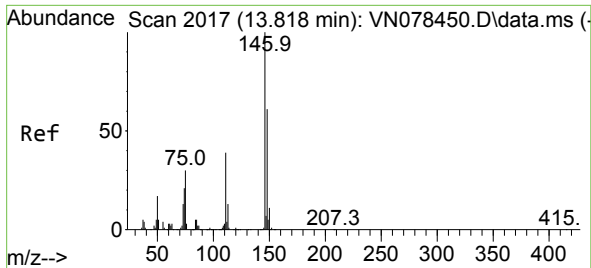
Tgt Ion	Resp	Lower	Upper
119	100		
134	40.7	12.6	37.8#
91	30.1	12.4	37.2



#87
 1,3-Dichlorobenzene
 Concen: 0.399 ug/l
 RT: 13.735 min Scan# 2003
 Delta R.T. 0.000 min
 Lab File: VN078645.D
 Acq: 25 Jul 2023 14:23

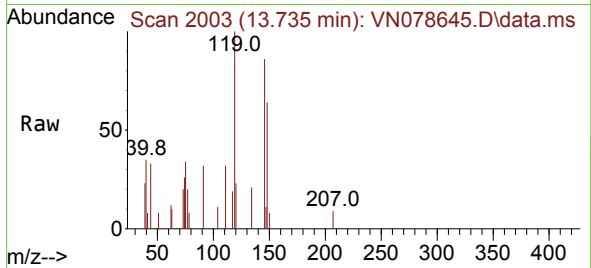
Tgt Ion	Resp	Lower	Upper
146	100		
111	38.2	22.1	66.3
148	58.6	32.0	96.0



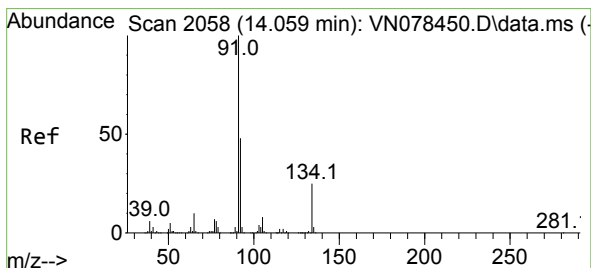
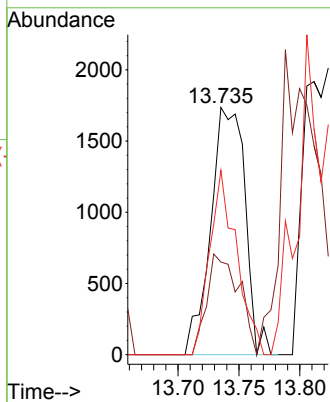
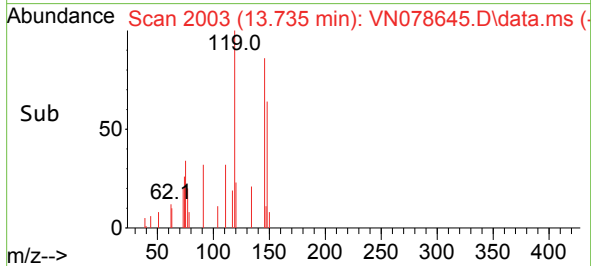


#88
 1,4-Dichlorobenzene
 Concen: 0.397 ug/l
 RT: 13.735 min Scan# 2017
 Delta R.T. -0.083 min
 Lab File: VN078645.D
 Acq: 25 Jul 2023 14:23

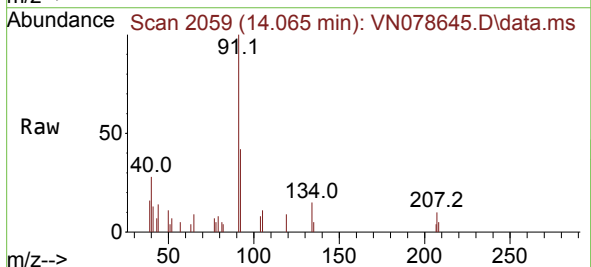
Instrument : MSVOA_N
 ClientSampleId : PB154393TB



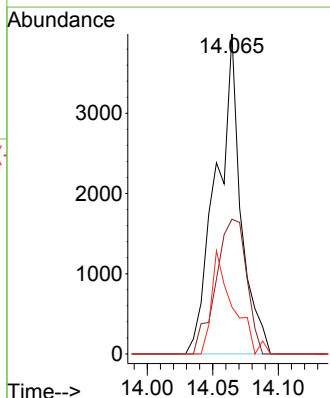
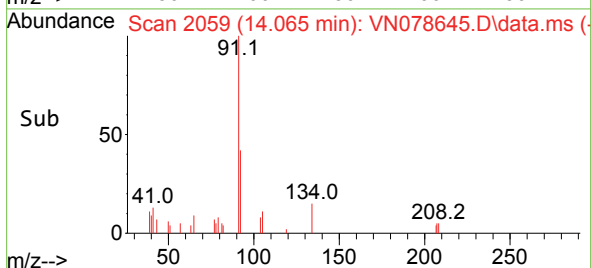
Tgt Ion:146 Resp: 3397
 Ion Ratio Lower Upper
 146 100
 111 38.2 20.6 61.8
 148 58.6 31.6 94.8

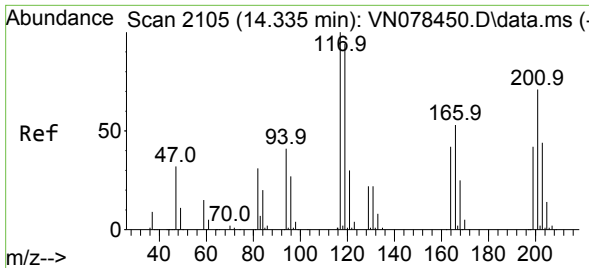


#89
 n-Butylbenzene
 Concen: 0.482 ug/l
 RT: 14.065 min Scan# 2059
 Delta R.T. 0.006 min
 Lab File: VN078645.D
 Acq: 25 Jul 2023 14:23



Tgt Ion: 91 Resp: 5198
 Ion Ratio Lower Upper
 91 100
 92 52.6 26.4 79.0
 134 28.3 12.6 37.6

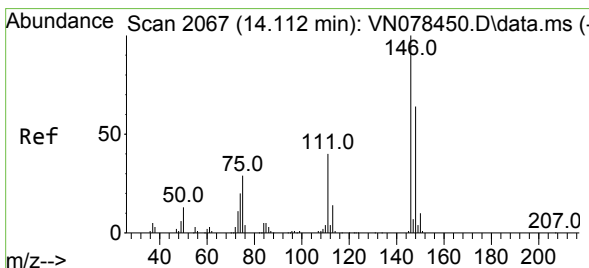
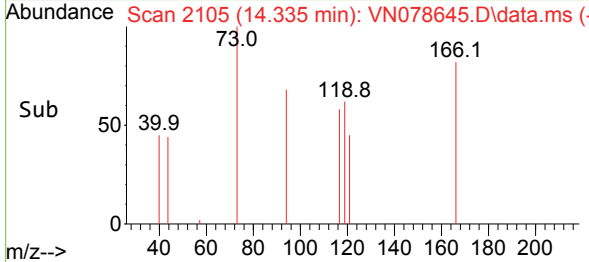
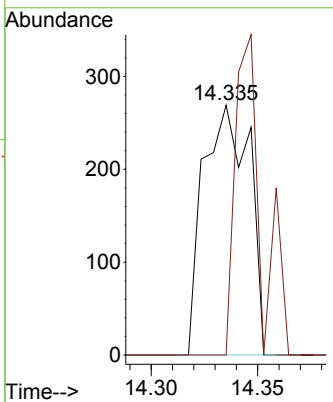
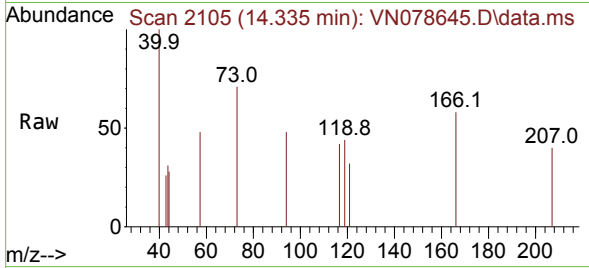




#90
 Hexachloroethane
 Concen: Below Cal
 RT: 14.335 min Scan# 2105
 Delta R.T. 0.000 min
 Lab File: VN078645.D
 Acq: 25 Jul 2023 14:23

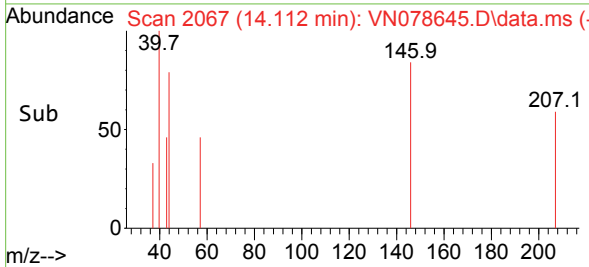
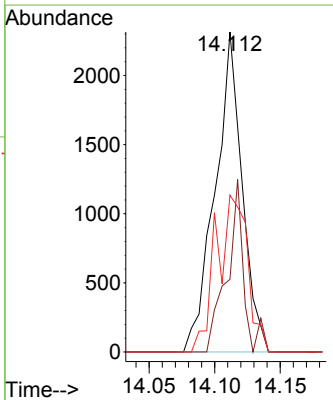
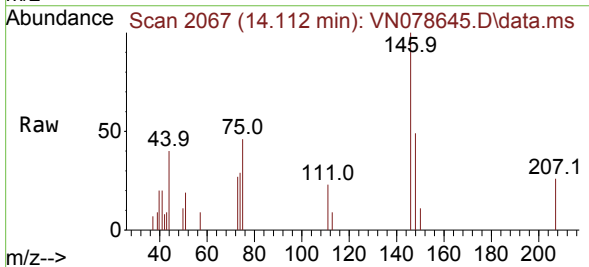
Instrument : MSVOA_N
 ClientSampleId : PB154393TB

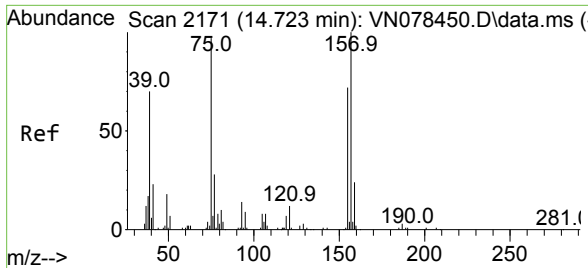
Tgt Ion:117 Resp: 404
 Ion Ratio Lower Upper
 117 100
 201 0.0 29.3 88.0#



#91
 1,2-Dichlorobenzene
 Concen: 0.391 ug/l
 RT: 14.112 min Scan# 2067
 Delta R.T. -0.000 min
 Lab File: VN078645.D
 Acq: 25 Jul 2023 14:23

Tgt Ion:146 Resp: 3312
 Ion Ratio Lower Upper
 146 100
 111 33.4 22.0 66.0
 148 56.9 31.8 95.3

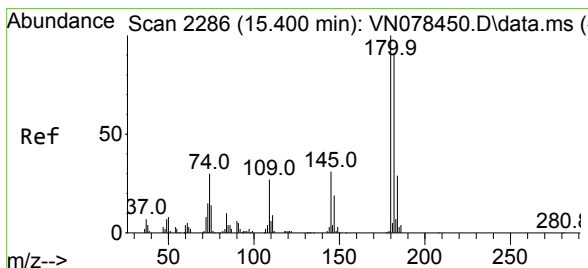
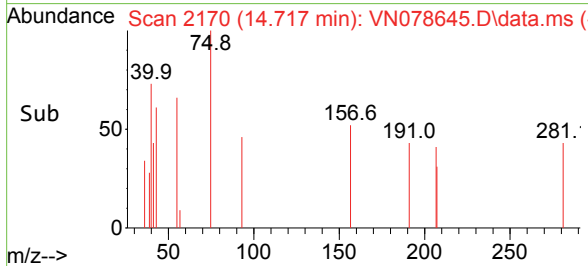
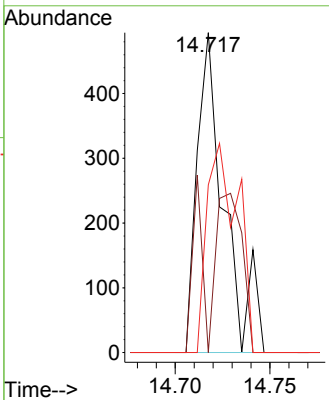
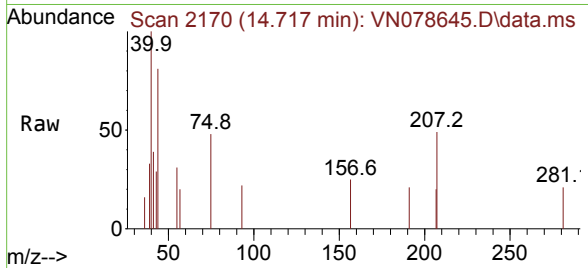




#92
 1,2-Dibromo-3-Chloropropane
 Concen: Below Cal
 RT: 14.717 min Scan# 2170
 Delta R.T. -0.006 min
 Lab File: VN078645.D
 Acq: 25 Jul 2023 14:23

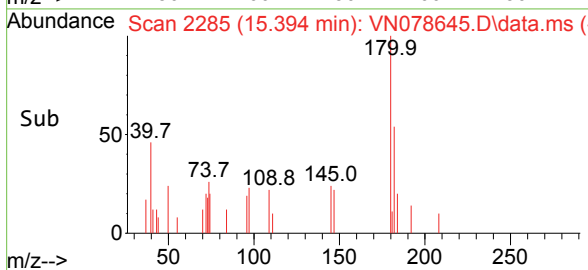
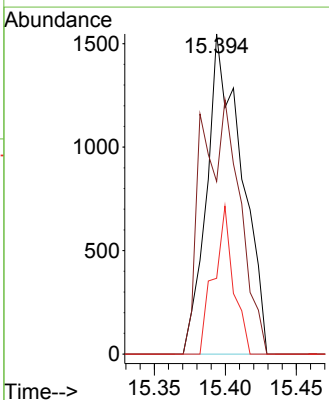
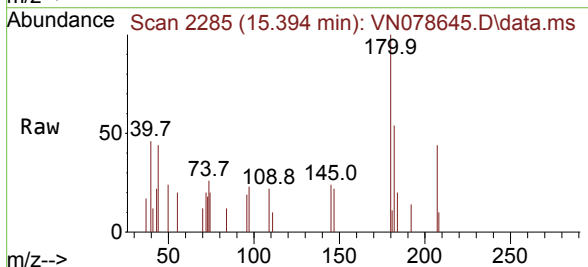
Instrument : MSVOA_N
 ClientSampleId : PB154393TB

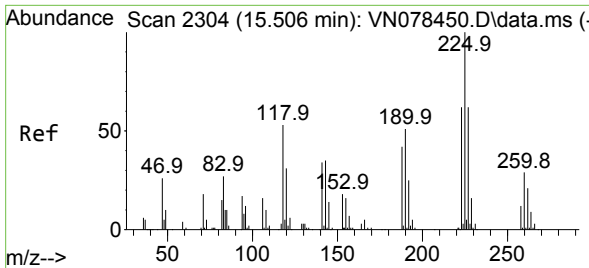
Tgt Ion	Resp	Lower	Upper
75	100		
155	19.6	39.1	117.2#
157	0.0	50.3	150.9#



#93
 1,2,4-Trichlorobenzene
 Concen: 0.980 ug/l
 RT: 15.394 min Scan# 2285
 Delta R.T. -0.006 min
 Lab File: VN078645.D
 Acq: 25 Jul 2023 14:23

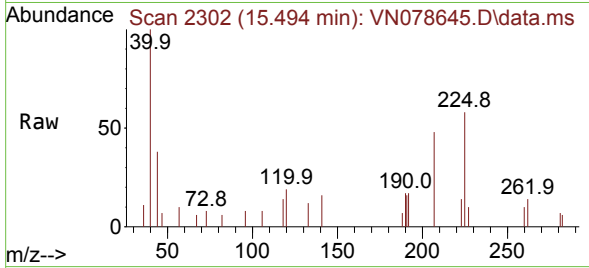
Tgt Ion	Resp	Lower	Upper
180	100		
182	42.2	46.1	138.2#
145	25.8	16.6	49.8



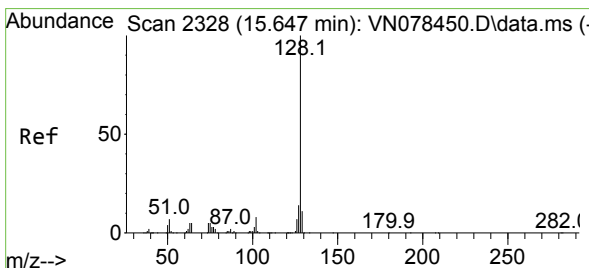
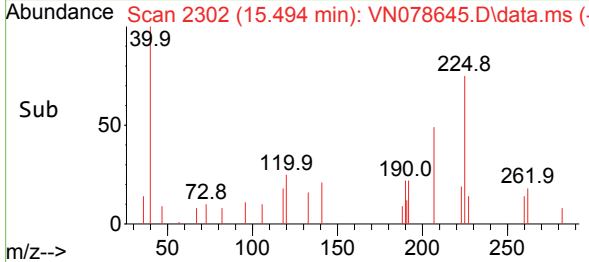
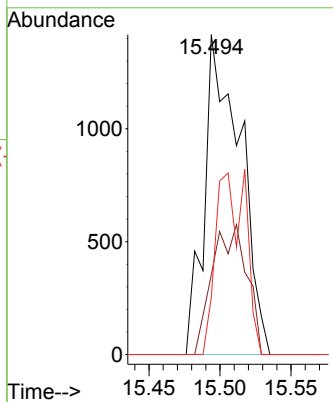


#94
 Hexachlorobutadiene
 Concen: Below Cal
 RT: 15.494 min Scan# 21
 Delta R.T. -0.012 min
 Lab File: VN078645.D
 Acq: 25 Jul 2023 14:23

Instrument : MSVOA_N
 ClientSampleId : PB154393TB

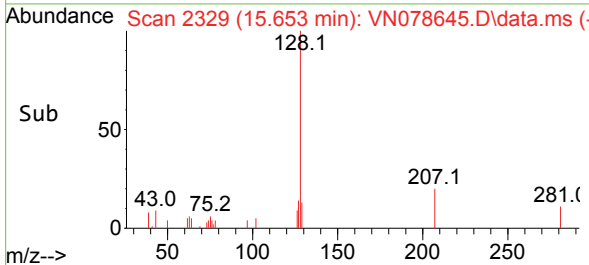
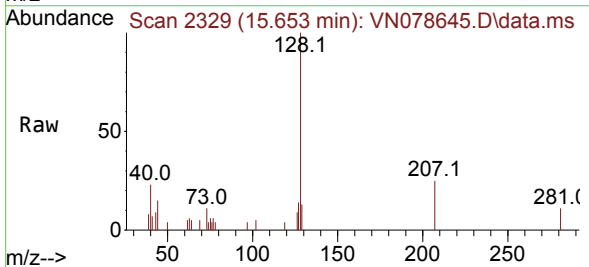
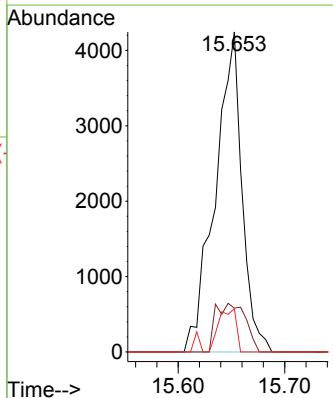


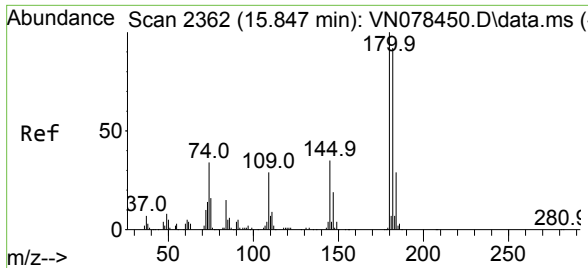
Tgt Ion:225 Resp: 2481
 Ion Ratio Lower Upper
 225 100
 223 0.0 31.3 93.8#
 227 0.0 31.9 95.9#



#95
 Naphthalene
 Concen: 0.805 ug/l
 RT: 15.653 min Scan# 2329
 Delta R.T. 0.006 min
 Lab File: VN078645.D
 Acq: 25 Jul 2023 14:23

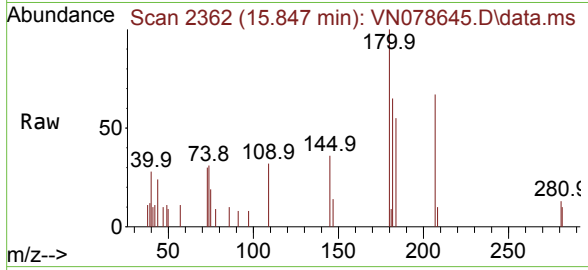
Tgt Ion:128 Resp: 7434
 Ion Ratio Lower Upper
 128 100
 127 16.9 10.0 15.0#
 129 8.8 8.7 13.1





#96
 1,2,3-Trichlorobenzene
 Concen: 1.183 ug/l
 RT: 15.847 min Scan# 21
 Delta R.T. -0.000 min
 Lab File: VN078645.D
 Acq: 25 Jul 2023 14:23

Instrument :
 MSVOA_N
 ClientSampleId :
 PB154393TB



Tgt Ion:180 Resp: 3675

Ion	Ratio	Lower	Upper
180	100		
182	65.3	46.2	138.6
145	31.5	17.5	52.6

