

Data Path : Z:\VOASRV\HPCHEM1\MSVOA N\DATA\VN072618\  
 Data File : VN050091.D  
 Acq On : 26 Jul 2018 18:56  
 Operator : MD\SY  
 Sample : J4167-01  
 Misc : 5.00mL/MSVOA N/WATER  
 ALS Vial : 20 Sample Multiplier: 1

Instrument :  
 MSVOA\_N  
 ClientSampleId :  
 GS-OILY-WATER

Integration Parameters: RTEINT.P

Integrator: RTE  
 Smoothing : ON  
 Sampling : 1  
 Start Thrs: 0.2  
 Stop Thrs : 0

Filtering: 5  
 Min Area: 3 % of largest Peak  
 Max Peaks: 100  
 Peak Location: TOP

If leading or trailing edge < 100 prefer < Baseline drop else tangent >  
 Peak separation: 5

Method : Z:\VOASRV\HPCHEM1\MSVOA\_N\METHODS\82N072418W.M  
 Title : SW846 8260

Signal : TIC

peak #	R.T. min	first scan	max scan	last scan	PK TY	peak height	corr. area	corr. % max.	% of total
1	1.661	3	22	40	rBV	1376015	2125949	23.79%	3.037%
2	7.596	1848	1868	1879	rBV	522565	1301723	14.57%	1.859%
3	7.670	1879	1891	1919	rVB	763965	1823201	20.41%	2.604%
4	8.030	1985	2003	2031	rBV	535921	1272828	14.25%	1.818%
5	8.246	2036	2070	2072	rBV3	105129	393535	4.40%	0.562%
6	8.590	2161	2177	2199	rBV	1115974	2355425	26.36%	3.365%
7	9.082	2310	2330	2343	rBV5	40236	95522	1.07%	0.136%
8	10.094	2627	2645	2659	rBV	1962203	3657282	40.93%	5.224%
9	11.409	3040	3054	3074	rBV	1438049	2562335	28.68%	3.660%
10	11.512	3074	3086	3102	rVB	104712	201492	2.26%	0.288%
11	11.631	3112	3123	3143	rVB	199888	344372	3.85%	0.492%
12	11.950	3209	3222	3242	rVB	2207898	3586437	40.14%	5.123%
13	12.252	3306	3316	3330	rVB	65070	107348	1.20%	0.153%
14	12.403	3350	3363	3383	rBV	1322707	2233172	24.99%	3.190%
15	12.593	3401	3422	3436	rVB	76908	159881	1.79%	0.228%
16	12.689	3439	3452	3460	rBV	221938	361672	4.05%	0.517%
17	12.734	3460	3466	3476	rVB	87321	133601	1.50%	0.191%
18	12.895	3500	3516	3531	rBV	1462025	2388331	26.73%	3.412%
19	13.043	3551	3562	3573	rVB	581666	939566	10.52%	1.342%
20	13.171	3589	3602	3612	rBV2	67496	140509	1.57%	0.201%
21	13.290	3629	3639	3646	rBV	138315	213328	2.39%	0.305%
22	13.348	3646	3657	3660	rVV	1527764	2383028	26.67%	3.404%
23	13.377	3660	3666	3679	rVV	3130695	4938876	55.28%	7.055%
24	13.445	3679	3687	3697	rVB2	66570	110461	1.24%	0.158%
25	13.515	3697	3709	3711	rBV	280274	384954	4.31%	0.550%
26	13.544	3711	3718	3727	rVV	888032	1501578	16.81%	2.145%
27	13.593	3727	3733	3748	rVB3	265936	481412	5.39%	0.688%
28	13.676	3748	3759	3768	rVB	219139	350661	3.92%	0.501%
29	13.741	3768	3779	3789	rBV	542622	860751	9.63%	1.230%
30	13.805	3789	3799	3816	rVB	455917	838194	9.38%	1.197%
31	13.892	3816	3826	3836	rBV	819304	1262081	14.13%	1.803%
32	13.950	3836	3844	3849	rBV	177486	260259	2.91%	0.372%
33	13.998	3849	3859	3870	rVB2	821813	1327498	14.86%	1.896%
34	14.130	3890	3900	3911	rBV2	598451	941431	10.54%	1.345%

Data Path : Z:\VOASRV\HPCHEM1\MSVOA N\DATA\VN072618\  
 Data File : VN050091.D  
 Acq On : 26 Jul 2018 18:56  
 Operator : MD\SY  
 Sample : J4167-01  
 Misc : 5.00mL/MSVOA N/WATER  
 ALS Vial : 20 Sample Multiplier: 1

Instrument :  
 MSVOA\_N  
 ClientSampleId :  
 GS-OILY-WATER

Integration Parameters: RTEINT.P  
 Integrator: RTE  
 Smoothing : ON  
 Sampling : 1  
 Start Thrs: 0.2  
 Stop Thrs : 0

Filtering: 5  
 Min Area: 3 % of largest Peak  
 Max Peaks: 100  
 Peak Location: TOP

If leading or trailing edge < 100 prefer < Baseline drop else tangent >  
 Peak separation: 5

Method : Z:\VOASRV\HPCHEM1\MSVOA\_N\METHODS\82N072418W.M  
 Title : SW846 8260

35	14.213	3912	3926	3931	rBV	645733	1037834	11.62%	1.482%
36	14.252	3931	3938	3947	rVV	1049157	1626563	18.20%	2.323%
37	14.297	3947	3952	3959	rVB2	81994	104294	1.17%	0.149%
38	14.419	3981	3990	3999	rBV4	79525	163042	1.82%	0.233%
39	14.480	3999	4009	4018	rVV2	514835	849476	9.51%	1.213%
40	14.528	4018	4024	4031	rVV	145473	208059	2.33%	0.297%
41	14.589	4031	4043	4057	rVV3	2264884	4752041	53.19%	6.788%
42	14.660	4057	4065	4075	rVB4	278076	462191	5.17%	0.660%
43	14.744	4082	4091	4101	rBV	425485	665188	7.44%	0.950%
44	14.853	4108	4125	4131	rBV5	407290	849012	9.50%	1.213%
45	14.959	4147	4158	4168	rVV3	379852	772864	8.65%	1.104%
46	15.007	4169	4173	4181	rVB3	71857	95462	1.07%	0.136%
47	15.091	4192	4199	4203	rBV	76954	111388	1.25%	0.159%
48	15.136	4204	4213	4224	rVB	691296	1180590	13.21%	1.686%
49	15.239	4234	4245	4255	rBV3	225327	477369	5.34%	0.682%
50	15.294	4256	4262	4288	rVB3	171768	357116	4.00%	0.510%
51	15.422	4290	4302	4314	rBV	234616	442118	4.95%	0.632%
52	15.583	4339	4352	4358	rBV2	264936	542306	6.07%	0.775%
53	15.702	4381	4389	4398	rBV	101483	189167	2.12%	0.270%
54	15.776	4401	4412	4421	rVV3	172251	335111	3.75%	0.479%
55	15.917	4442	4456	4484	rBV5	179981	493715	5.53%	0.705%
56	16.104	4500	4514	4522	rBV	313190	656146	7.34%	0.937%
57	16.165	4522	4533	4558	rVB	1218918	2661391	29.79%	3.802%
58	16.358	4577	4593	4619	rVB	4167014	8934918	100.00%	12.763%

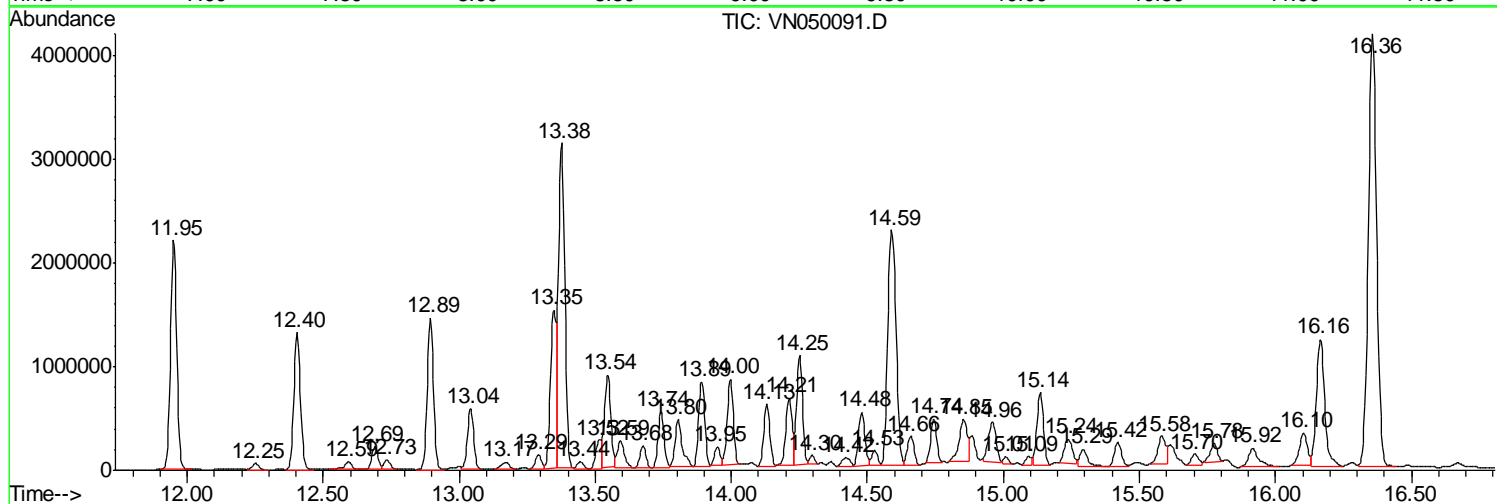
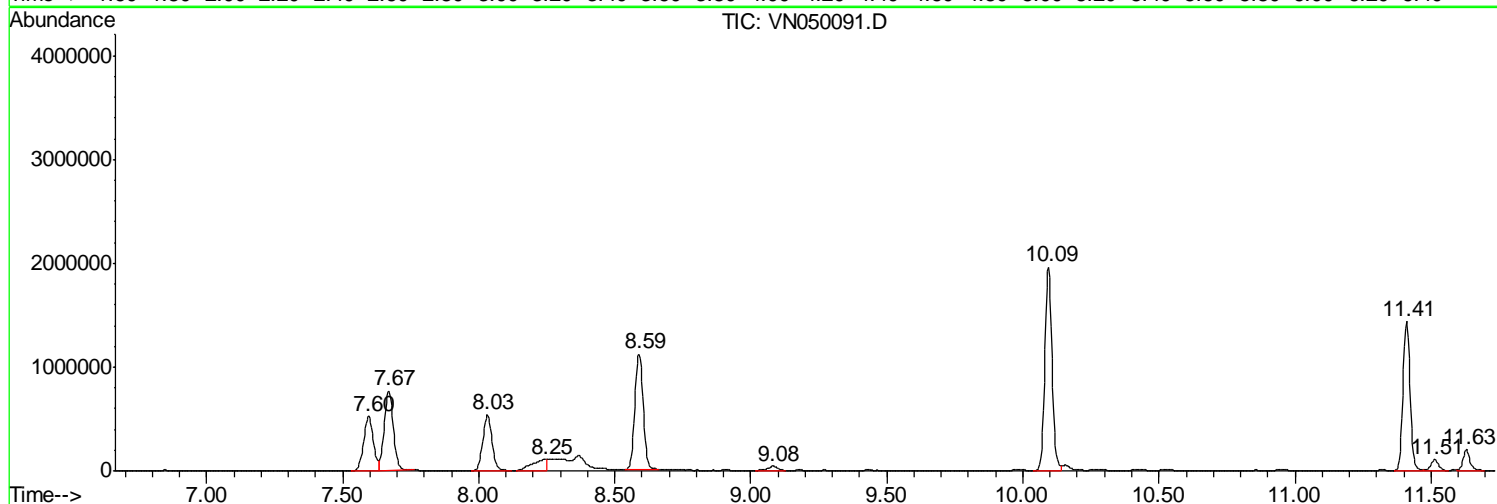
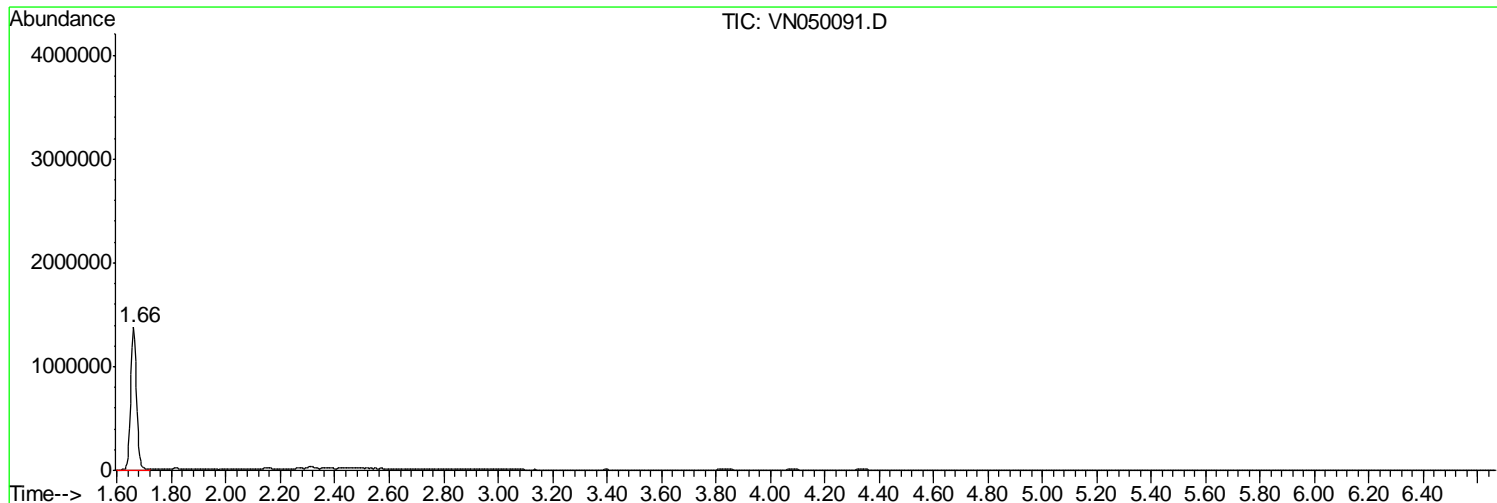
Sum of corrected areas: 70006054

Data Path : Z:\VOASRV\HPCHEM1\MSVOA N\DATA\VN072618\  
 Data File : VN050091.D  
 Acq On : 26 Jul 2018 18:56  
 Operator : MD\SY  
 Sample : J4167-01  
 Misc : 5.00mL/MSVOA N/WATER  
 ALS Vial : 20 Sample Multiplier: 1

Instrument :  
 MSVOA\_N  
 ClientSampleId :  
 GS-OILY-WATER

Quant Method : Z:\VOASRV\HPCHEM1\MSVOA\_N\METHODS\82N072418W.M  
 Quant Title : SW846 8260

TIC Library : C:\DATABASE\NIST11.L  
 TIC Integration Parameters: LSCINT.P



Data Path : Z:\VOASRV\HPCHEM1\MSVOA N\DATA\VN072618\  
 Data File : VN050091.D  
 Acq On : 26 Jul 2018 18:56  
 Operator : MD\SY  
 Sample : J4167-01  
 Misc : 5.00mL/MSVOA N/WATER  
 ALS Vial : 20 Sample Multiplier: 1

Instrument :  
 MSVOA\_N  
 ClientSampled :  
 GS-OILY-WATER

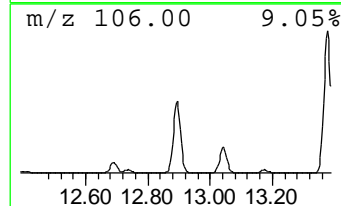
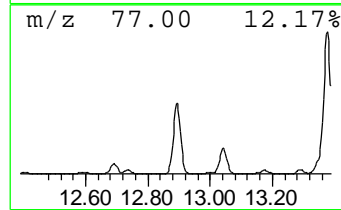
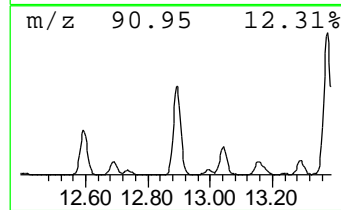
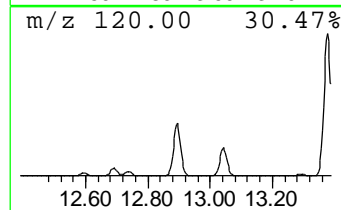
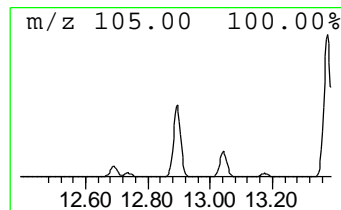
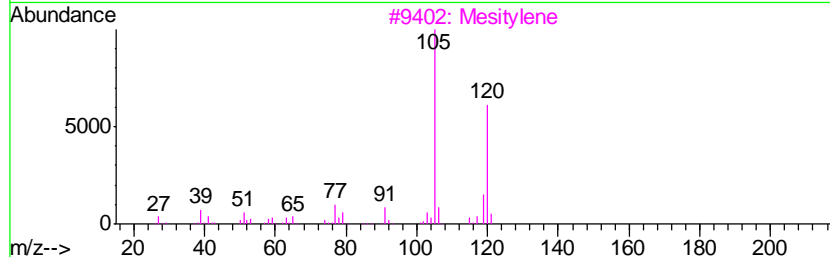
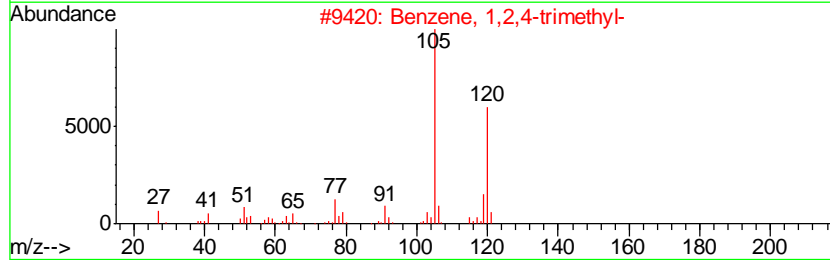
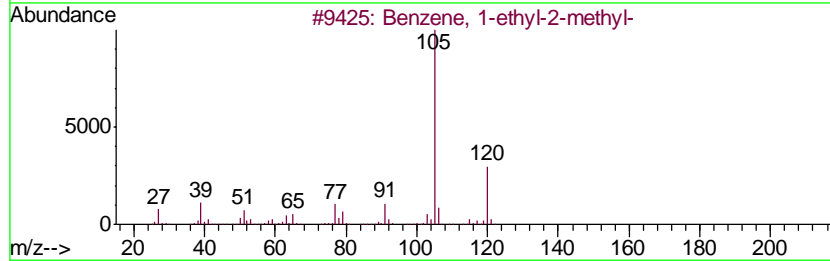
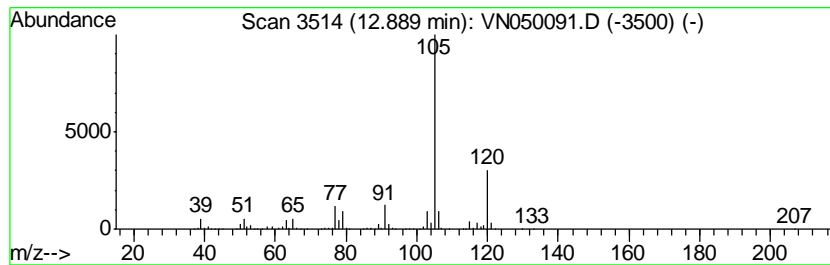
Quant Method : Z:\VOASRV\HPCHEM1\MSVOA\_N\METHODS\82N072418W.M  
 Quant Title : SW846 8260

TIC Library : C:\DATABASE\NIST11.L  
 TIC Integration Parameters: LSCINT.P

\*\*\*\*\*  
 Peak Number 2 Benzene, 1-ethyl-2-methyl- Concentration Rank 5

R.T.	EstConc	Area	Relative to ISTD	R.T.
12.89	50.11 ug/l	2388330	1,4-Dichlorobenzene-d4	13.35

Hit#	of	Tentative ID	MW	MolForm	CAS#	Qual
1	5	Benzene, 1-ethyl-2-methyl-	120	C9H12	000611-14-3	95
2		Benzene, 1,2,4-trimethyl-	120	C9H12	000095-63-6	91
3		Mesitylene	120	C9H12	000108-67-8	90
4		Benzene, 1-ethyl-4-methyl-	120	C9H12	000622-96-8	90
5		Benzene, 1-ethyl-3-methyl-	120	C9H12	000620-14-4	90



Data Path : Z:\VOASRV\HPCHEM1\MSVOA N\DATA\VN072618\  
 Data File : VN050091.D  
 Acq On : 26 Jul 2018 18:56  
 Operator : MD\SY  
 Sample : J4167-01  
 Misc : 5.00mL/MSVOA N/WATER  
 ALS Vial : 20 Sample Multiplier: 1

Instrument :  
 MSVOA\_N  
 ClientSampled :  
 GS-OILY-WATER

Quant Method : Z:\VOASRV\HPCHEM1\MSVOA\_N\METHODS\82N072418W.M  
 Quant Title : SW846 8260

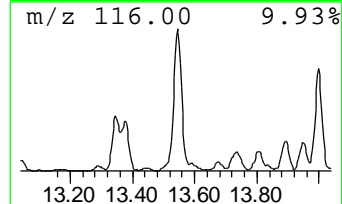
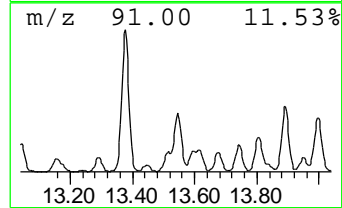
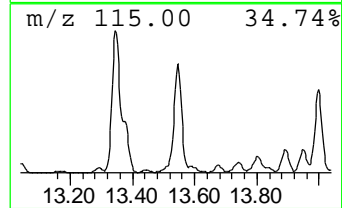
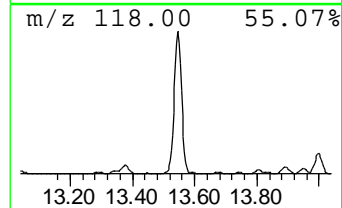
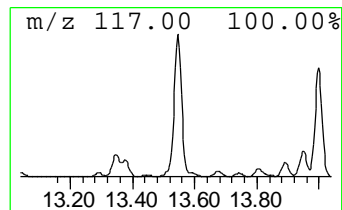
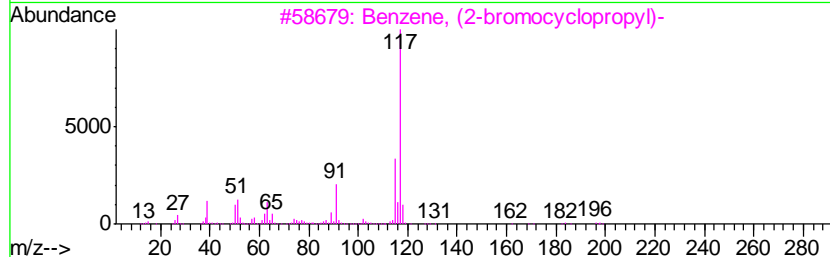
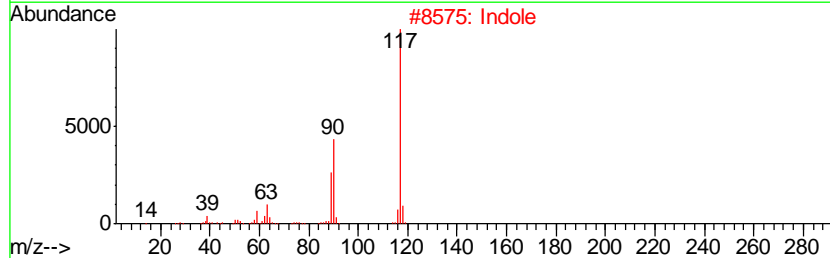
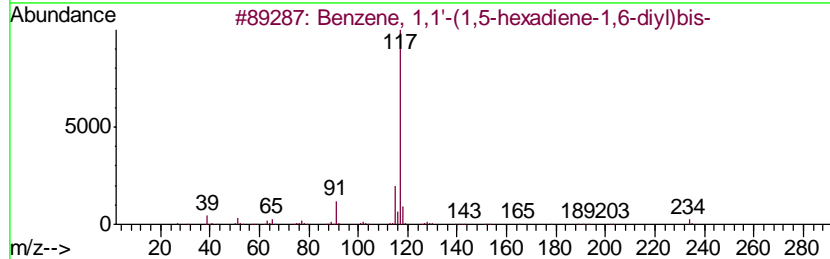
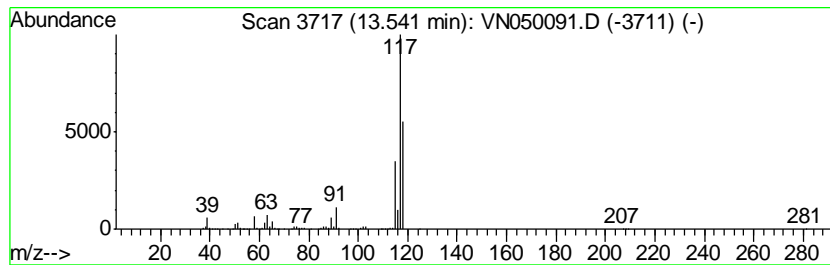
TIC Library : C:\DATABASE\NIST11.L  
 TIC Integration Parameters: LSCINT.P

\*\*\*\*\*  
 Peak Number 3 Benzene, 1,1'-(1,5-hexadien... Concentration Rank 7

R.T.	EstConc	Area	Relative to ISTD	R.T.
13.54	31.51 ug/l	1501580	1,4-Dichlorobenzene-d4	13.35

Hit#	of	Tentative ID	MW	MolForm	CAS#	Qual
1	5	Benzene, 1,1'-(1,5-hexadiene-1,6...	234	C18H18	004439-45-6	59
2		Indole	117	C8H7N	000120-72-9	49
3		Benzene, (2-bromocyclopropyl)-	196	C9H9Br	036617-02-4	45
4		Benzaldehyde, 4-(1-phenyl-2-prop...	238	C16H14O2	1000277-56-1	40
5		Benzonitrile, 3-methyl-	117	C8H7N	000620-22-4	32



Data Path : Z:\VOASRV\HPCHEM1\MSVOA N\DATA\VN072618\  
 Data File : VN050091.D  
 Acq On : 26 Jul 2018 18:56  
 Operator : MD\SY  
 Sample : J4167-01  
 Misc : 5.00mL/MSVOA N/WATER  
 ALS Vial : 20 Sample Multiplier: 1

Instrument :  
 MSVOA\_N  
 ClientSampled :  
 GS-OILY-WATER

Quant Method : Z:\VOASRV\HPCHEM1\MSVOA\_N\METHODS\82N072418W.M  
 Quant Title : SW846 8260

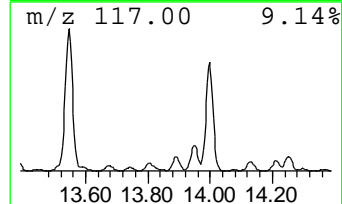
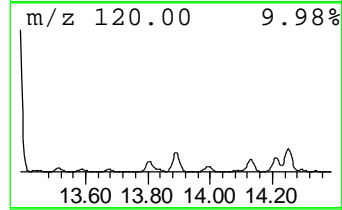
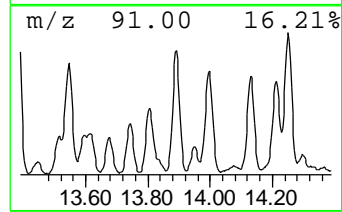
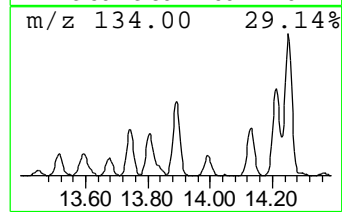
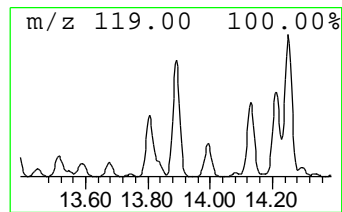
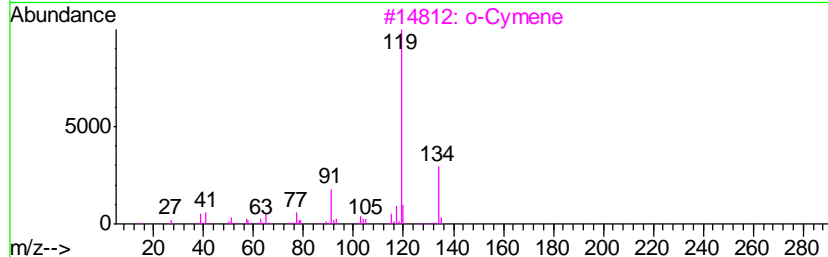
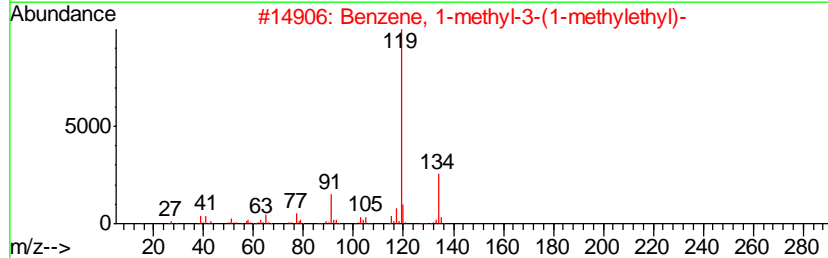
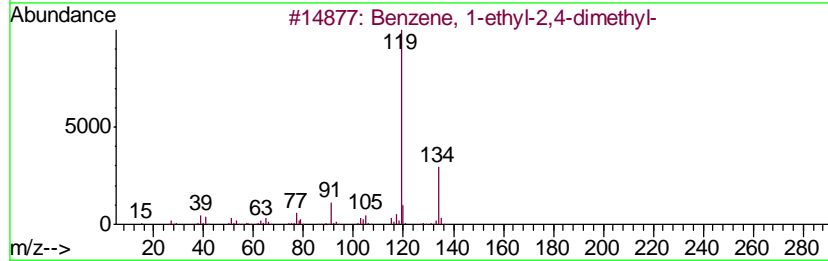
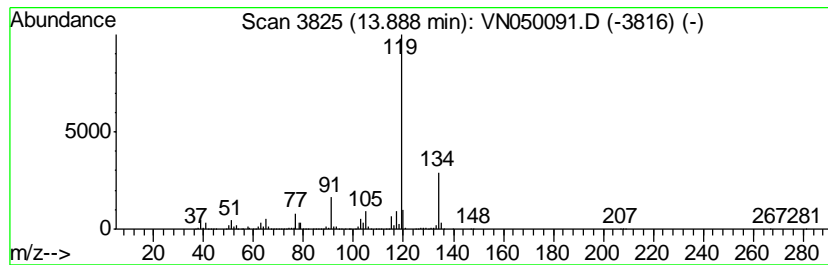
TIC Library : C:\DATABASE\NIST11.L  
 TIC Integration Parameters: LSCINT.P

\*\*\*\*\*  
 Peak Number 4 Benzene, 1-ethyl-2,4-dimethyl- Concentration Rank 9

R.T.	EstConc	Area	Relative to ISTD	R.T.
13.89	26.48 ug/l	1262080	1,4-Dichlorobenzene-d4	13.35

Hit#	of	Tentative ID	MW	MolForm	CAS#	Qual
1	5	Benzene, 1-ethyl-2,4-dimethyl-	134	C10H14	000874-41-9	97
2		Benzene, 1-methyl-3-(1-methyleth...	134	C10H14	000535-77-3	95
3		o-Cymene	134	C10H14	000527-84-4	95
4		Benzene, 2-ethyl-1,3-dimethyl-	134	C10H14	002870-04-4	95
5		Benzene, 4-ethyl-1,2-dimethyl-	134	C10H14	000934-80-5	95



Data Path : Z:\VOASRV\HPCHEM1\MSVOA N\DATA\VN072618\  
 Data File : VN050091.D  
 Acq On : 26 Jul 2018 18:56  
 Operator : MD\SY  
 Sample : J4167-01  
 Misc : 5.00mL/MSVOA N/WATER  
 ALS Vial : 20 Sample Multiplier: 1

Instrument :  
 MSVOA\_N  
 ClientSampled :  
 GS-OILY-WATER

Quant Method : Z:\VOASRV\HPCHEM1\MSVOA\_N\METHODS\82N072418W.M  
 Quant Title : SW846 8260

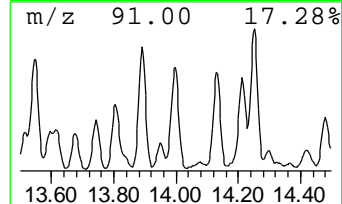
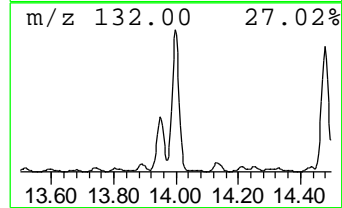
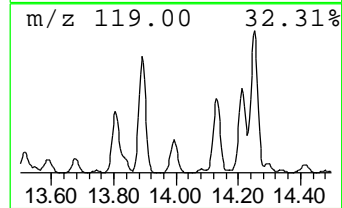
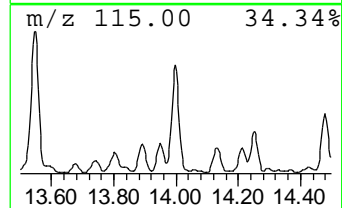
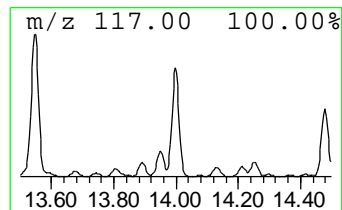
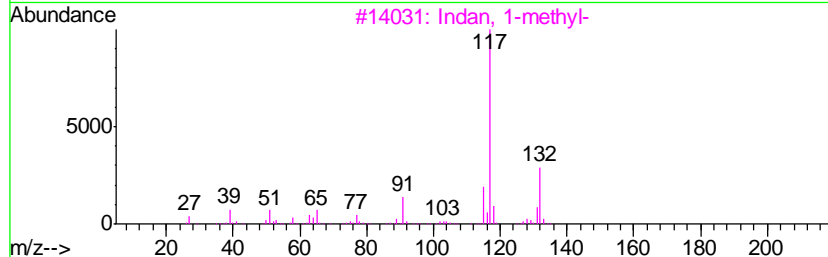
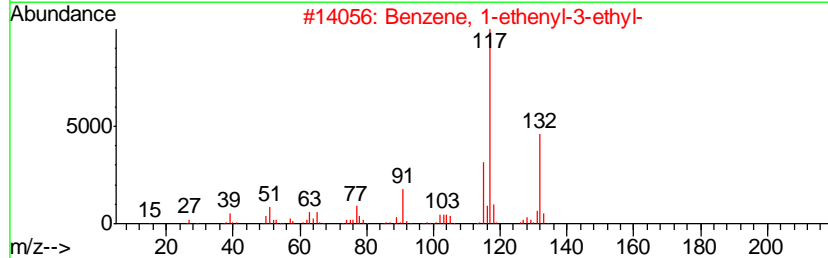
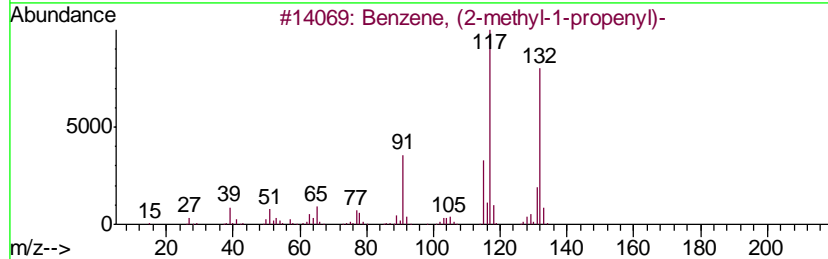
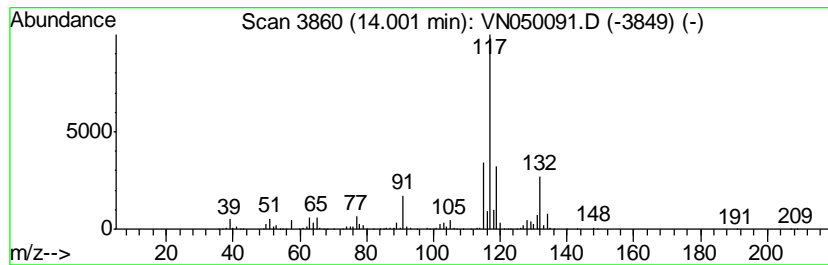
TIC Library : C:\DATABASE\NIST11.L  
 TIC Integration Parameters: LSCINT.P

\*\*\*\*\*  
 Peak Number 5 Benzene, (2-methyl-1-propen... Concentration Rank 8

R.T.	EstConc	Area	Relative to ISTD	R.T.
14.00	27.85 ug/l	1327500	1,4-Dichlorobenzene-d4	13.35

Hit#	of	Tentative ID	MW	MolForm	CAS#	Qual
1	5	Benzene, (2-methyl-1-propenyl)-	132	C10H12	000768-49-0	81
2		Benzene, 1-ethenyl-3-ethyl-	132	C10H12	007525-62-4	81
3		Indan, 1-methyl-	132	C10H12	000767-58-8	76
4		Benzene, 2-butenyl-	132	C10H12	001560-06-1	72
5		Benzene, (2-methylcyclopropyl)-	132	C10H12	1000327-39-0	70



Data Path : Z:\VOASRV\HPCHEM1\MSVOA N\DATA\VN072618\  
 Data File : VN050091.D  
 Acq On : 26 Jul 2018 18:56  
 Operator : MD\SY  
 Sample : J4167-01  
 Misc : 5.00mL/MSVOA N/WATER  
 ALS Vial : 20 Sample Multiplier: 1

Instrument :  
 MSVOA\_N  
 ClientSampled :  
 GS-OILY-WATER

Quant Method : Z:\VOASRV\HPCHEM1\MSVOA\_N\METHODS\82N072418W.M  
 Quant Title : SW846 8260

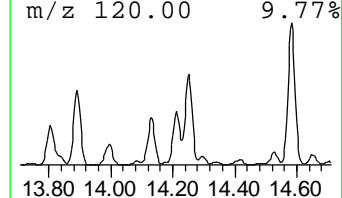
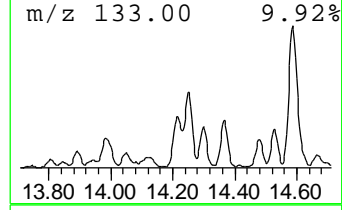
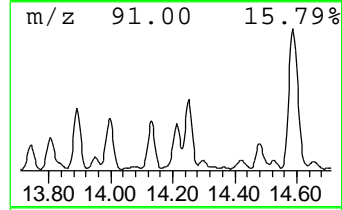
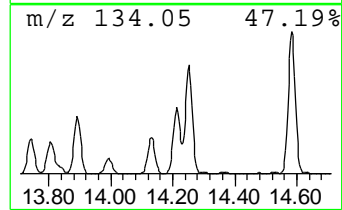
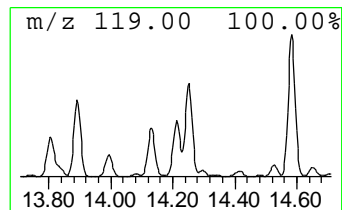
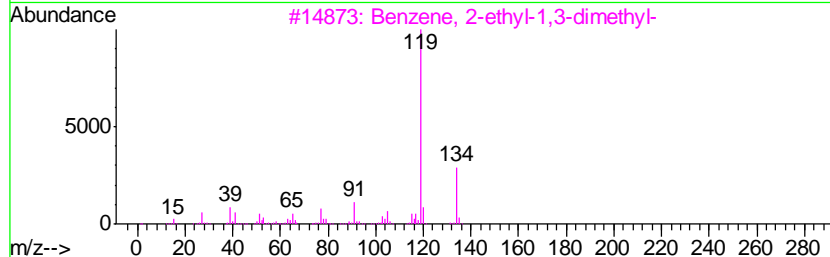
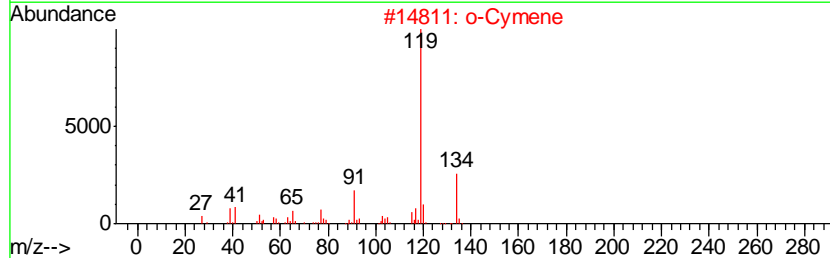
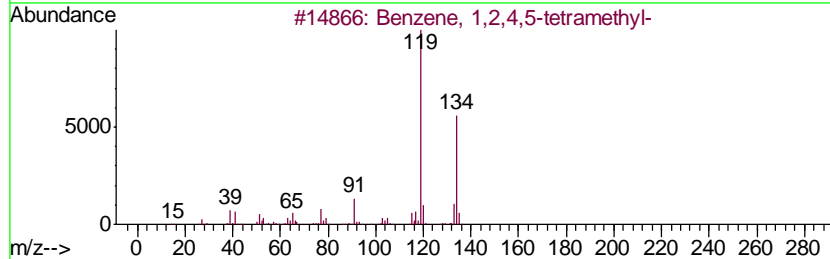
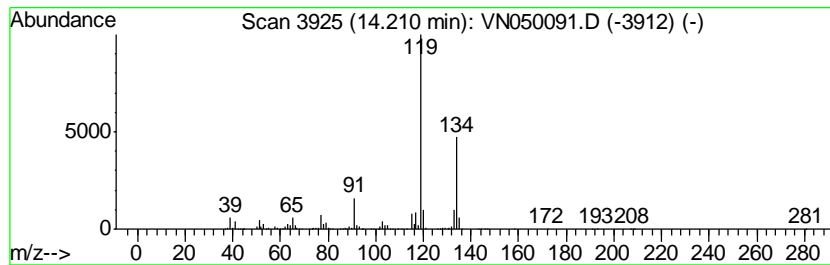
TIC Library : C:\DATABASE\NIST11.L  
 TIC Integration Parameters: LSCINT.P

\*\*\*\*\*  
 Peak Number 6 Benzene, 1,2,4,5-tetramethyl- Concentration Rank 10

R.T.	EstConc	Area	Relative to ISTD	R.T.
14.21	21.78 ug/l	1037830	1,4-Dichlorobenzene-d4	13.35

Hit#	of	Tentative ID	MW	MolForm	CAS#	Qual
1	5	Benzene, 1,2,4,5-tetramethyl-	134	C10H14	000095-93-2	97
2		o-Cymene	134	C10H14	000527-84-4	95
3		Benzene, 2-ethyl-1,3-dimethyl-	134	C10H14	002870-04-4	94
4		1,3-Cyclopentadiene, 1,2,3,4-tet...	134	C10H14	076089-59-3	94
5		Benzene, 1,2,3,4-tetramethyl-	134	C10H14	000488-23-3	94





Data Path : Z:\VOASRV\HPCHEM1\MSVOA N\DATA\VN072618\  
 Data File : VN050091.D  
 Acq On : 26 Jul 2018 18:56  
 Operator : MD\SY  
 Sample : J4167-01  
 Misc : 5.00mL/MSVOA N/WATER  
 ALS Vial : 20 Sample Multiplier: 1

Instrument :  
 MSVOA\_N  
 ClientSampleId :  
 GS-OILY-WATER

Quant Method : Z:\VOASRV\HPCHEM1\MSVOA\_N\METHODS\82N072418W.M  
 Quant Title : SW846 8260

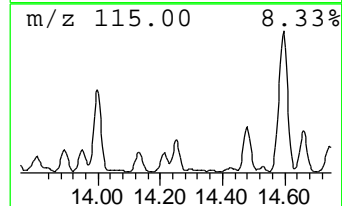
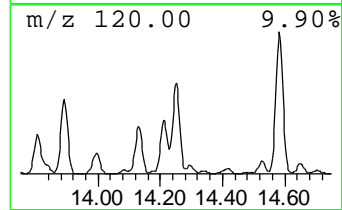
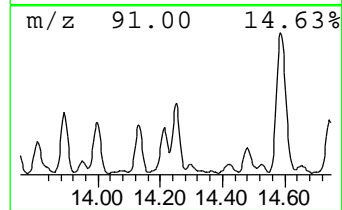
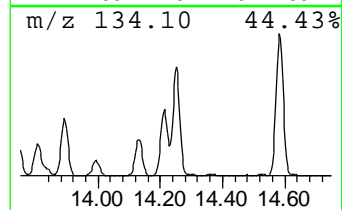
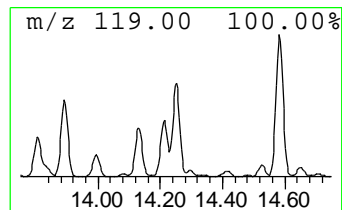
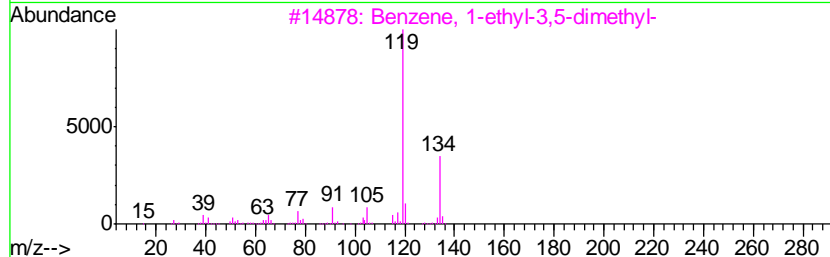
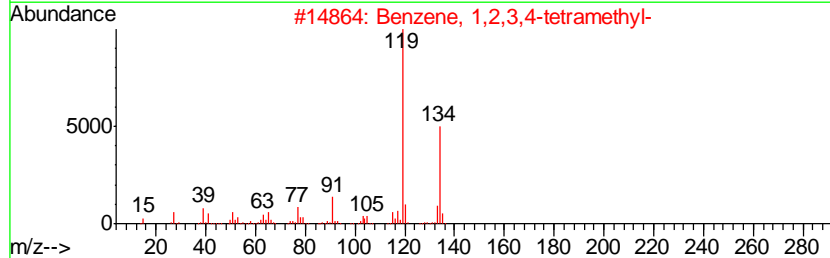
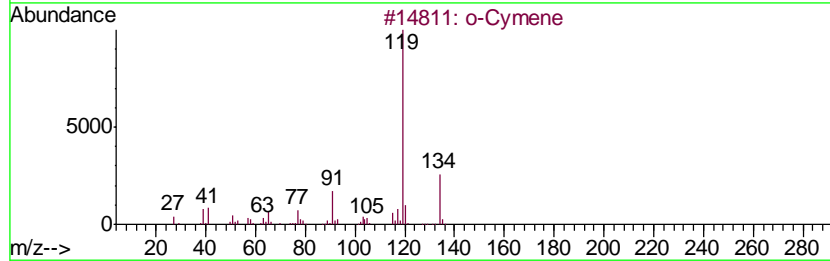
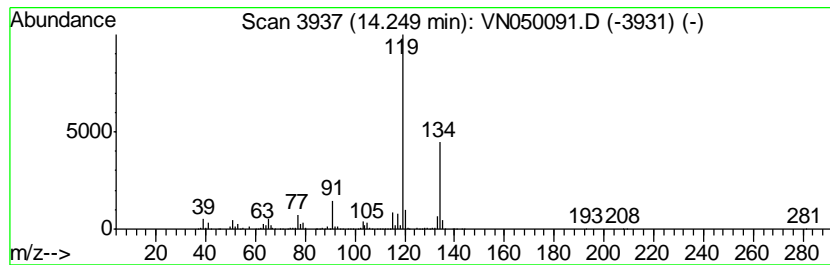
TIC Library : C:\DATABASE\NIST11.L  
 TIC Integration Parameters: LSCINT.P

\*\*\*\*\*  
 Peak Number 7 o-Cymene Concentration Rank 6

R.T.	EstConc	Area	Relative to ISTD	R.T.
14.25	34.13 ug/l	1626560	1,4-Dichlorobenzene-d4	13.35

Hit#	of	Tentative ID	MW	MolForm	CAS#	Qual
1	5	o-Cymene	134	C10H14	000527-84-4	96
2		Benzene, 1,2,3,4-tetramethyl-	134	C10H14	000488-23-3	95
3		Benzene, 1-ethyl-3,5-dimethyl-	134	C10H14	000934-74-7	94
4		Benzene, 2-ethyl-1,4-dimethyl-	134	C10H14	001758-88-9	94
5		Benzene, 1,2,4,5-tetramethyl-	134	C10H14	000095-93-2	94



Data Path : Z:\VOASRV\HPCHEM1\MSVOA N\DATA\VN072618\  
 Data File : VN050091.D  
 Acq On : 26 Jul 2018 18:56  
 Operator : MD\SY  
 Sample : J4167-01  
 Misc : 5.00mL/MSVOA N/WATER  
 ALS Vial : 20 Sample Multiplier: 1

Instrument :  
 MSVOA\_N  
 ClientSampled :  
 GS-OILY-WATER

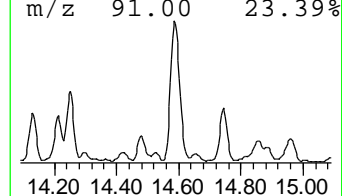
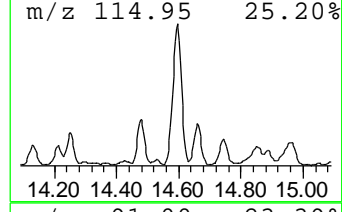
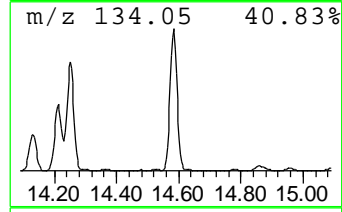
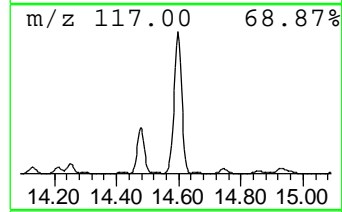
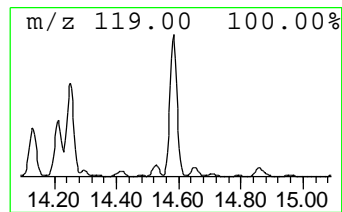
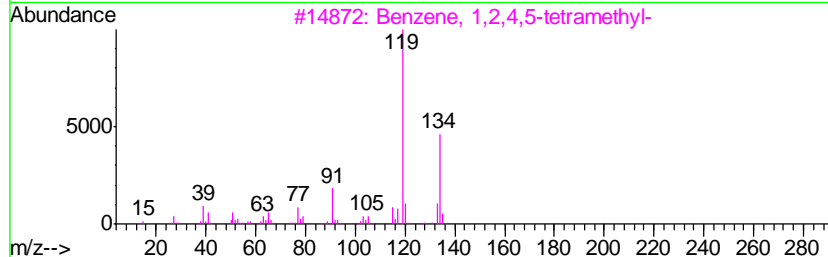
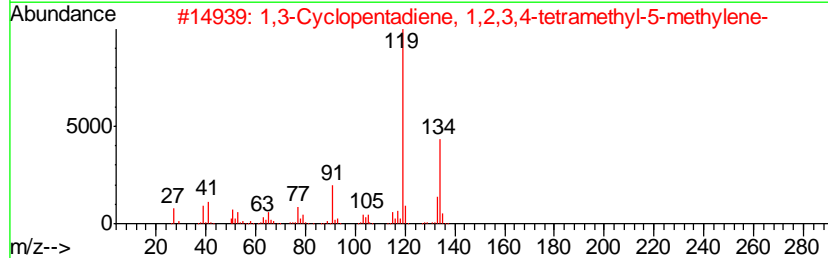
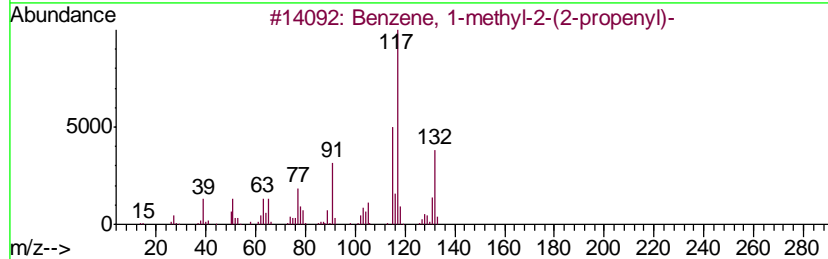
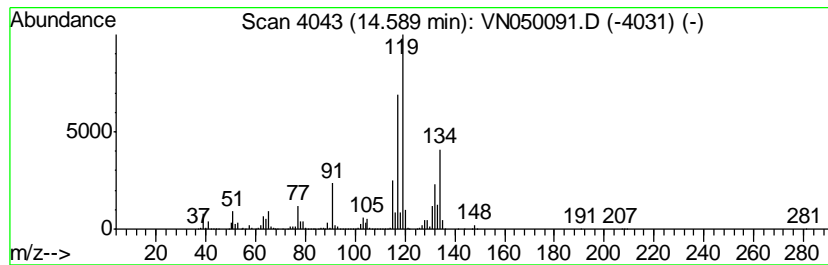
Quant Method : Z:\VOASRV\HPCHEM1\MSVOA\_N\METHODS\82N072418W.M  
 Quant Title : SW846 8260

TIC Library : C:\DATABASE\NIST11.L  
 TIC Integration Parameters: LSCINT.P

\*\*\*\*\*  
 Peak Number 8 Benzene, 1-methyl-2-(2-prop... Concentration Rank 2

R.T.	EstConc	Area	Relative to ISTD	R.T.
14.59	99.71 ug/l	4752040	1,4-Dichlorobenzene-d4	13.35

Hit#	of	Tentative ID	MW	MolForm	CAS#	Qual
1	5	Benzene, 1-methyl-2-(2-propenyl)-	132	C10H12	001587-04-8	81
2		1,3-Cyclopentadiene, 1,2,3,4-tet...	134	C10H14	076089-59-3	64
3		Benzene, 1,2,4,5-tetramethyl-	134	C10H14	000095-93-2	64
4		p-Cymene	134	C10H14	000099-87-6	60
5		o-Cymene	134	C10H14	000527-84-4	60



Data Path : Z:\VOASRV\HPCHEM1\MSVOA N\DATA\VN072618\  
 Data File : VN050091.D  
 Acq On : 26 Jul 2018 18:56  
 Operator : MD\SY  
 Sample : J4167-01  
 Misc : 5.00mL/MSVOA N/WATER  
 ALS Vial : 20 Sample Multiplier: 1

Instrument :  
 MSVOA\_N  
 ClientSampleId :  
 GS-OILY-WATER

Quant Method : Z:\VOASRV\HPCHEM1\MSVOA\_N\METHODS\82N072418W.M  
 Quant Title : SW846 8260

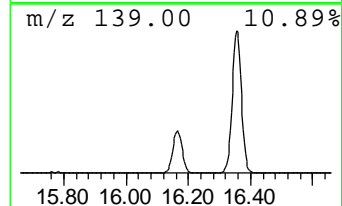
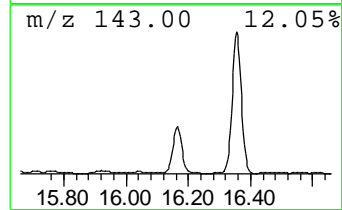
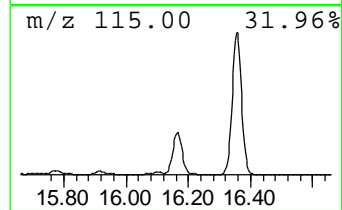
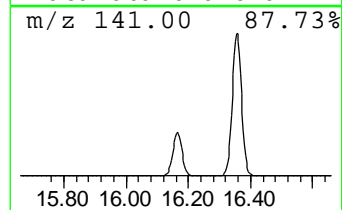
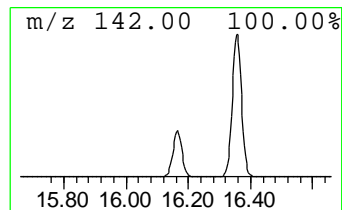
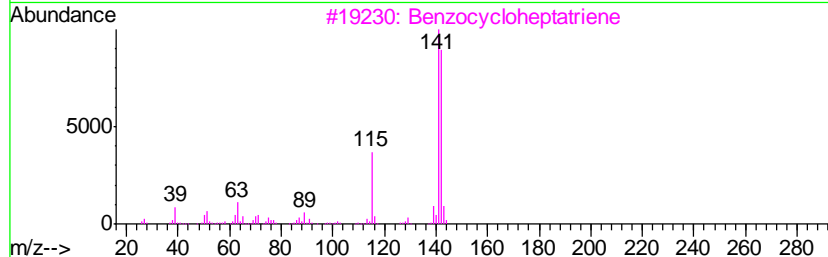
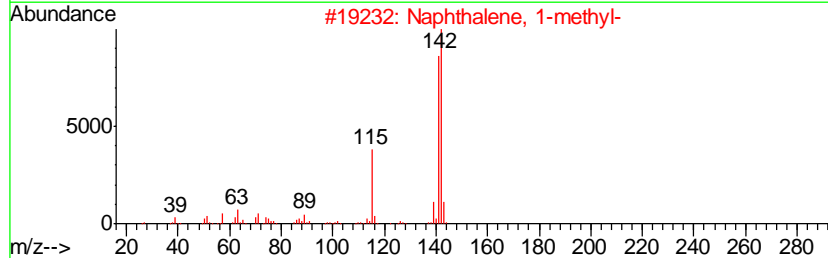
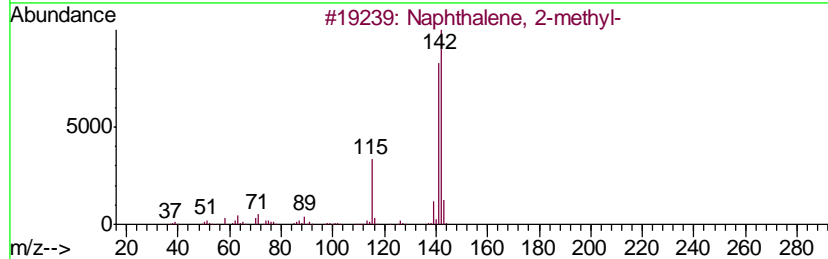
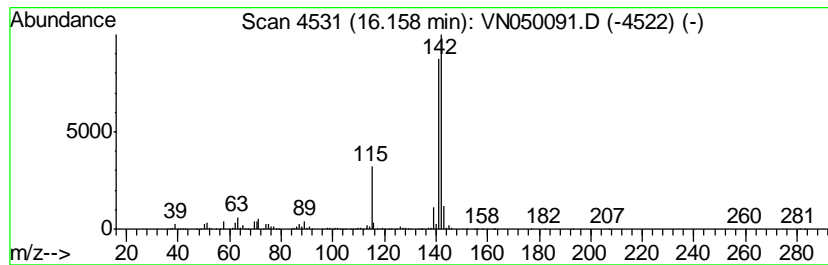
TIC Library : C:\DATABASE\NIST11.L  
 TIC Integration Parameters: LSCINT.P

\*\*\*\*\*  
 Peak Number 9 Naphthalene, 1-methyl- Concentration Rank 4

R.T.	EstConc	Area	Relative to ISTD	R.T.
16.16	55.84 ug/l	2661390	1,4-Dichlorobenzene-d4	13.35

Hit#	of	Tentative ID	MW	MolForm	CAS#	Qual
1	5	Naphthalene, 2-methyl-	142	C11H10	000091-57-6	96
2		Naphthalene, 1-methyl-	142	C11H10	000090-12-0	96
3		Benzocycloheptatriene	142	C11H10	000264-09-5	91
4		1,4-Methanonaphthalene, 1,4-dihy...	142	C11H10	004453-90-1	91
5		Bicyclo[4.4.1]undeca-1,3,5,7,9-p...	142	C11H10	002443-46-1	59



Data Path : Z:\VOASRV\HPCHEM1\MSVOA\_N\DATA\VN072618\  
Data File : VN050091.D  
Acq On : 26 Jul 2018 18:56  
Operator : MD\SY  
Sample : J4167-01  
Misc : 5.00mL/MSVOA\_N/WATER  
ALS Vial : 20 Sample Multiplier: 1

Instrument :  
MSVOA\_N  
ClientSampleId :  
GS-OILY-WATER

Quant Method : Z:\VOASRV\HPCHEM1\MSVOA\_N\METHODS\82N072418W.M  
Quant Title : SW846 8260

TIC Library : C:\DATABASE\NIST11.L  
TIC Integration Parameters: LSCINT.P

TIC Top Hit name	RT	EstConc	Units	Response	--Internal Standard--			
					#	RT	Resp	Conc
Benzene, 1-ethyl-...	12.89	50.1	ug/l	2388330	4	13.35	2383030	50.0
Benzene, 1,1'-(1,...	13.54	31.5	ug/l	1501580	4	13.35	2383030	50.0
Benzene, 1-ethyl-...	13.89	26.5	ug/l	1262080	4	13.35	2383030	50.0
Benzene, (2-methy...	14.00	27.9	ug/l	1327500	4	13.35	2383030	50.0
Benzene, 1,2,4,5-...	14.21	21.8	ug/l	1037830	4	13.35	2383030	50.0
o-Cymene	14.25	34.1	ug/l	1626560	4	13.35	2383030	50.0
Benzene, 1-methyl...	14.59	99.7	ug/l	4752040	4	13.35	2383030	50.0
Naphthalene, 1-me...	16.16	55.8	ug/l	2661390	4	13.35	2383030	50.0