

Data Path : Z:\VOASRV\HPCHEM1\MSVOA N\DATA\VN072618\
 Data File : VN050115.D
 Acq On : 27 Jul 2018 5:43
 Operator : MD\SY
 Sample : J4184-09
 Misc : 5.00mL/MSVOA N/WATER
 ALS Vial : 46 Sample Multiplier: 1

Instrument :
 MSVOA_N
 ClientSampled :
 MW-11B

Integration Parameters: RTEINT.P

Integrator: RTE
 Smoothing : ON
 Sampling : 1
 Start Thrs: 0.2
 Stop Thrs : 0

Filtering: 5
 Min Area: 3 % of largest Peak
 Max Peaks: 100
 Peak Location: TOP

If leading or trailing edge < 100 prefer < Baseline drop else tangent >
 Peak separation: 5

Method : Z:\VOASRV\HPCHEM1\MSVOA_N\METHODS\82N072418W.M
 Title : SW846 8260

Signal : TIC

peak #	R.T. min	first scan	max scan	last scan	PK TY	peak height	corr. area	corr. % max.	% of total
1	1.661	3	22	41	rBV	919989	1434856	33.55%	3.920%
2	3.828	684	696	709	rBV2	18212	45728	1.07%	0.125%
3	7.596	1845	1868	1879	rBV	586239	1489295	34.83%	4.069%
4	7.667	1879	1890	1913	rVB	898597	2135200	49.93%	5.833%
5	8.030	1984	2003	2030	rBV2	643468	1557715	36.43%	4.255%
6	8.268	2039	2077	2078	rBV3	120898	533794	12.48%	1.458%
7	8.590	2160	2177	2208	rVB	1315327	2747519	64.25%	7.506%
8	10.095	2628	2645	2657	rBV	2328625	4276164	100.00%	11.682%
9	10.159	2657	2665	2692	rVB	186133	374475	8.76%	1.023%
10	10.795	2852	2863	2871	rBV2	37944	65036	1.52%	0.178%
11	11.410	3040	3054	3075	rVV	1707899	3045455	71.22%	8.320%
12	11.512	3075	3086	3104	rVB	186643	315971	7.39%	0.863%
13	11.619	3104	3119	3137	rBV	786302	1443594	33.76%	3.944%
14	11.950	3210	3222	3242	rVB	351038	601518	14.07%	1.643%
15	12.252	3304	3316	3329	rBV	85669	141437	3.31%	0.386%
16	12.403	3350	3363	3378	rBV	1586556	2631528	61.54%	7.189%
17	12.657	3430	3442	3449	rBV	740271	1231727	28.80%	3.365%
18	12.734	3460	3466	3494	rVB	108568	203598	4.76%	0.556%
19	12.892	3503	3515	3528	rBV	123311	202495	4.74%	0.553%
20	13.040	3532	3561	3570	rBV	259625	491772	11.50%	1.343%
21	13.091	3570	3577	3588	rVV	146225	237860	5.56%	0.650%
22	13.236	3610	3622	3632	rBV	923715	1432625	33.50%	3.914%
23	13.291	3632	3639	3646	rVV	193752	301909	7.06%	0.825%
24	13.345	3646	3656	3676	rVB2	1679279	3241463	75.80%	8.855%
25	13.512	3697	3708	3715	rBV	263735	451826	10.57%	1.234%
26	13.586	3727	3731	3742	rVB3	51445	74788	1.75%	0.204%
27	13.725	3763	3774	3790	rBV	311013	544608	12.74%	1.488%
28	13.889	3818	3825	3832	rVB2	42191	54692	1.28%	0.149%
29	13.982	3844	3854	3865	rBV2	461384	975686	22.82%	2.665%
30	14.127	3890	3899	3908	rVB3	37112	75228	1.76%	0.206%
31	14.252	3931	3938	3945	rBV	47204	73518	1.72%	0.201%
32	14.364	3963	3973	3979	rBV2	70949	127453	2.98%	0.348%
33	14.400	3979	3984	3994	rVB	89269	126320	2.95%	0.345%
34	14.490	3997	4012	4014	rBV3	96311	188706	4.41%	0.516%

Data Path : Z:\VOASRV\HPCHEM1\MSVOA N\DATA\VN072618\
Data File : VN050115.D
Acq On : 27 Jul 2018 5:43
Operator : MD\SY
Sample : J4184-09
Misc : 5.00mL/MSVOA N/WATER
ALS Vial : 46 Sample Multiplier: 1

Instrument :
MSVOA_N
ClientSampleId :
MW-11B

Integration Parameters: RTEINT.P
Integrator: RTE
Smoothing : ON Filtering: 5
Sampling : 1 Min Area: 3 % of largest Peak
Start Thrs: 0.2 Max Peaks: 100
Stop Thrs : 0 Peak Location: TOP

If leading or trailing edge < 100 prefer < Baseline drop else tangent >
Peak separation: 5

Method : Z:\VOASRV\HPCHEM1\MSVOA_N\METHODS\82N072418W.M
Title : SW846 8260

35	14.593	4035	4044	4054	rBV5	43930	89896	2.10%	0.246%
36	14.660	4055	4065	4075	rVV	186018	304661	7.12%	0.832%
37	14.741	4081	4090	4102	rVB2	208403	360172	8.42%	0.984%
38	14.844	4109	4122	4135	rBV3	64347	156018	3.65%	0.426%
39	15.136	4201	4213	4230	rVB	986914	1693189	39.60%	4.626%
40	15.979	4467	4475	4489	rVB3	38675	76409	1.79%	0.209%
41	16.165	4522	4533	4550	rVB2	202566	428922	10.03%	1.172%
42	16.355	4579	4592	4610	rVB	289497	620305	14.51%	1.695%

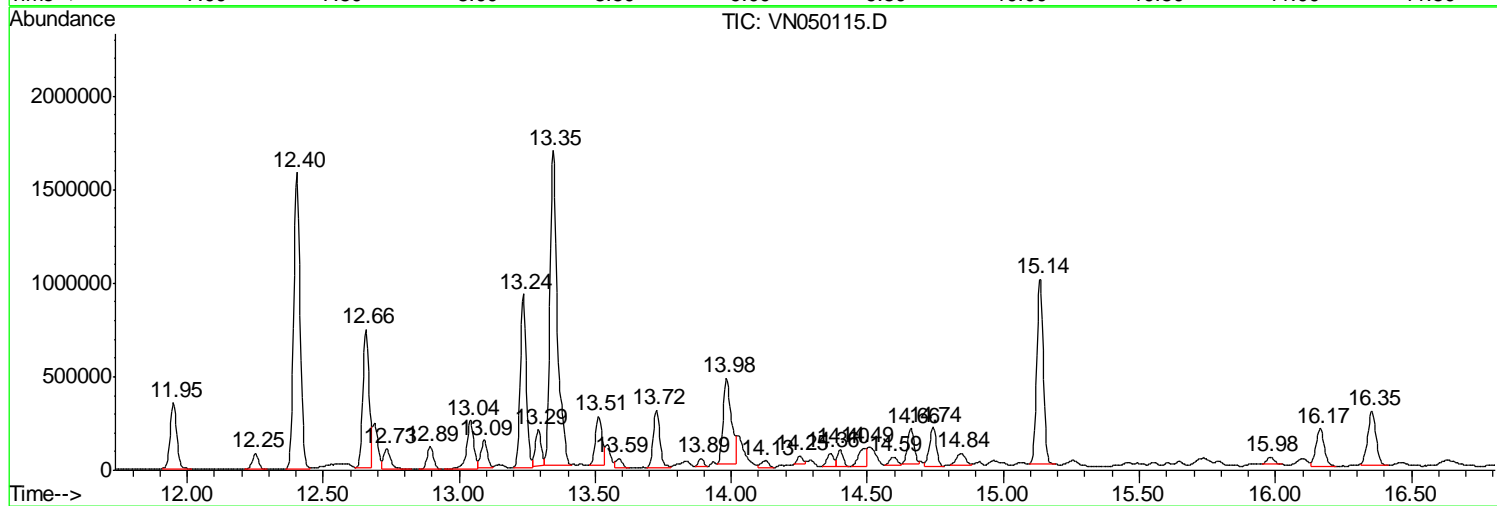
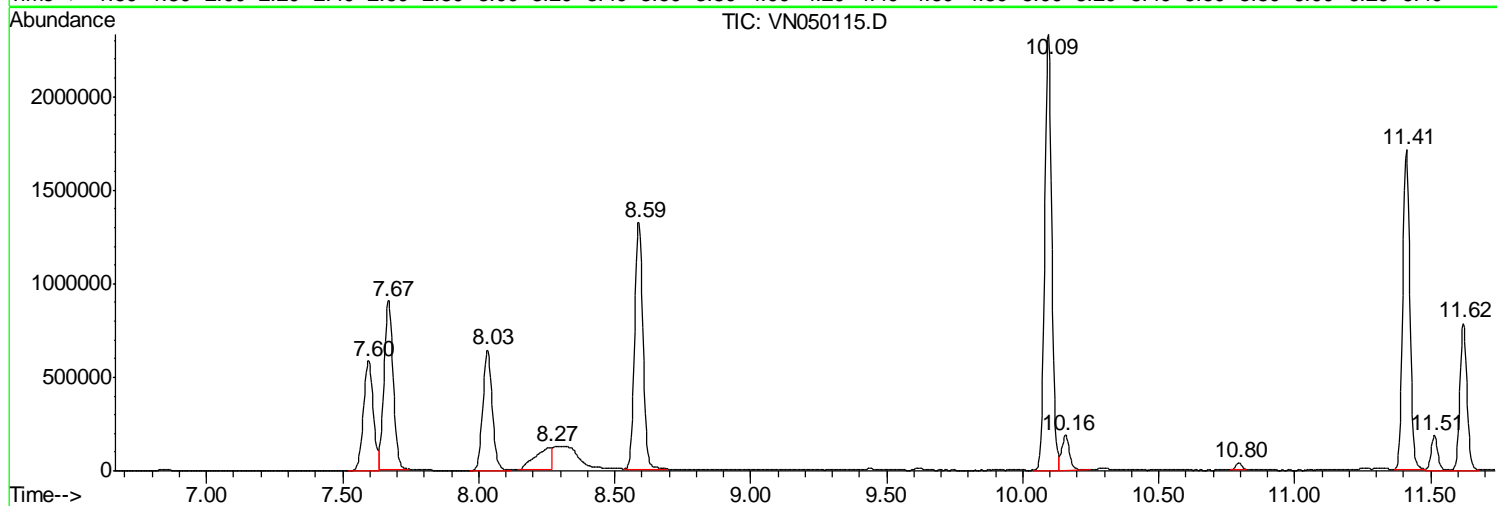
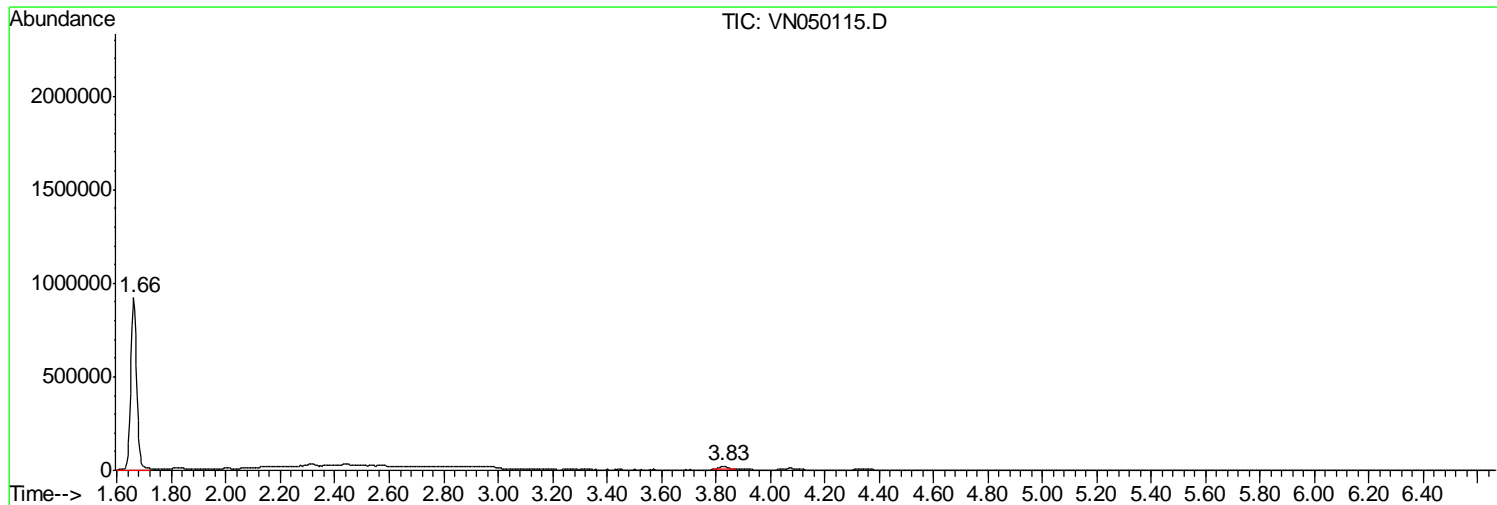
Sum of corrected areas: 36605131

Data Path : Z:\VOASRV\HPCHEM1\MSVOA N\DATA\VN072618\
 Data File : VN050115.D
 Acq On : 27 Jul 2018 5:43
 Operator : MD\SY
 Sample : J4184-09
 Misc : 5.00mL/MSVOA N/WATER
 ALS Vial : 46 Sample Multiplier: 1

Instrument :
 MSVOA_N
 ClientSampled :
 MW-11B

Quant Method : Z:\VOASRV\HPCHEM1\MSVOA_N\METHODS\82N072418W.M
 Quant Title : SW846 8260

TIC Library : C:\DATABASE\NIST11.L
 TIC Integration Parameters: LSCINT.P



Data Path : Z:\VOASRV\HPCHEM1\MSVOA N\DATA\VN072618\
 Data File : VN050115.D
 Acq On : 27 Jul 2018 5:43
 Operator : MD\SY
 Sample : J4184-09
 Misc : 5.00mL/MSVOA N/WATER
 ALS Vial : 46 Sample Multiplier: 1

Instrument :
 MSVOA_N
 ClientSampled :
 MW-11B

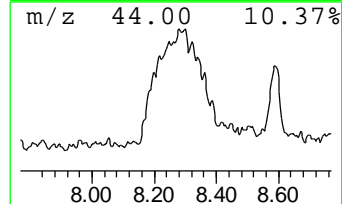
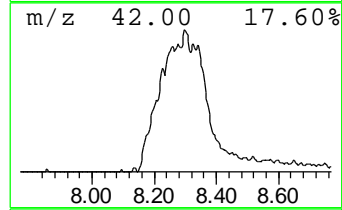
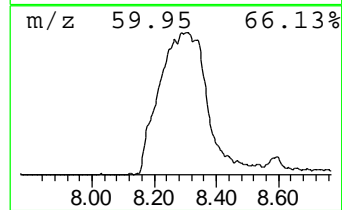
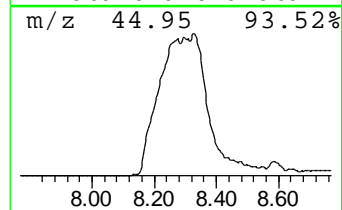
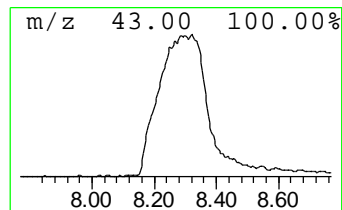
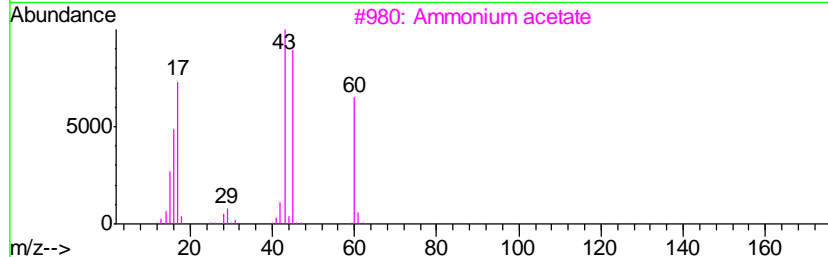
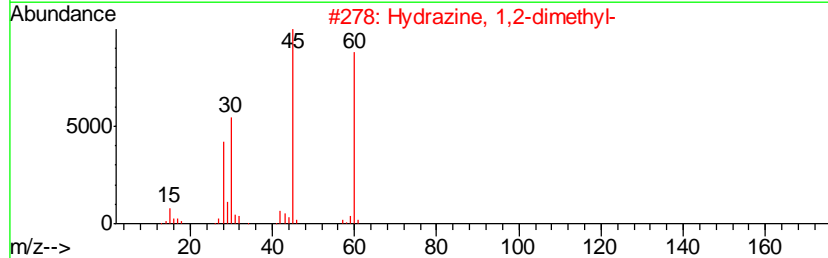
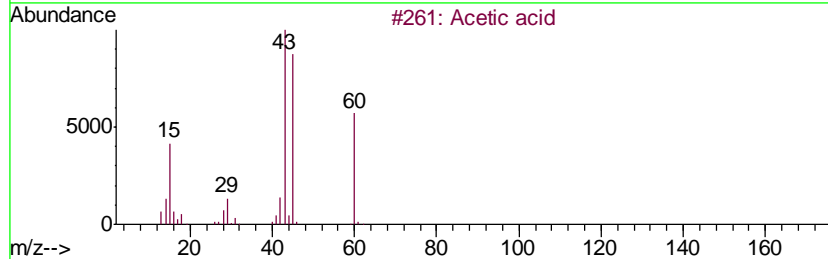
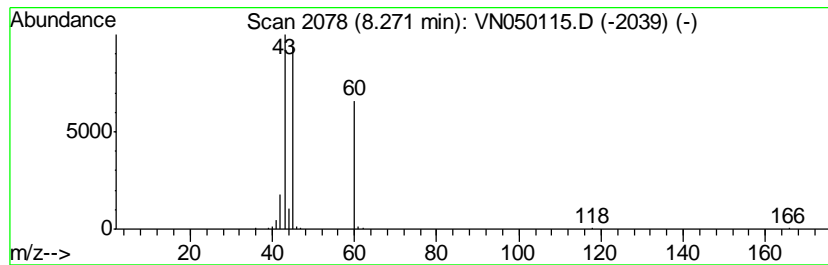
Quant Method : Z:\VOASRV\HPCHEM1\MSVOA_N\METHODS\82N072418W.M
 Quant Title : SW846 8260

TIC Library : C:\DATABASE\NIST11.L
 TIC Integration Parameters: LSCINT.P

 Peak Number 2 Acetic acid Concentration Rank 5

R.T.	EstConc	Area	Relative to ISTD	R.T.
8.27	9.71 ug/l	533794	1,4-Difluorobenzene	8.59

Hit#	of	Tentative ID	MW	MolForm	CAS#	Qual
1	5	Acetic acid	60	C2H4O2	000064-19-7	90
2		Hydrazine, 1,2-dimethyl-	60	C2H8N2	000540-73-8	64
3		Ammonium acetate	77	C2H7NO2	000631-61-8	64
4		Hydrazine, 1,1-dimethyl-	60	C2H8N2	000057-14-7	9
5		Carbonyl sulfide	60	COS	000463-58-1	5



Data Path : Z:\VOASRV\HPCHEM1\MSVOA N\DATA\VN072618\
 Data File : VN050115.D
 Acq On : 27 Jul 2018 5:43
 Operator : MD\SY
 Sample : J4184-09
 Misc : 5.00mL/MSVOA N/WATER
 ALS Vial : 46 Sample Multiplier: 1

Instrument :
 MSVOA_N
 ClientSampled :
 MW-11B

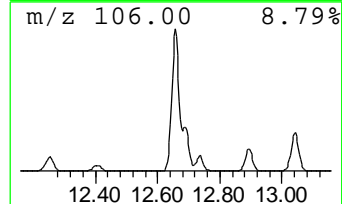
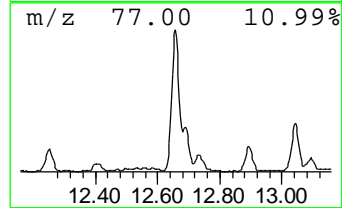
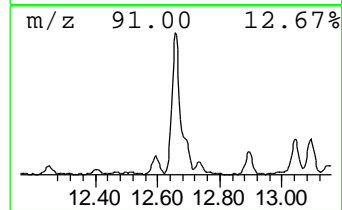
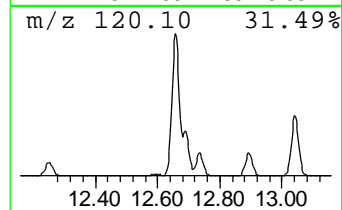
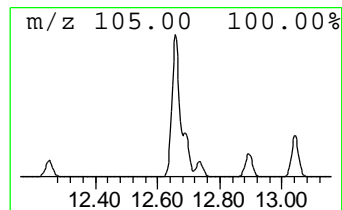
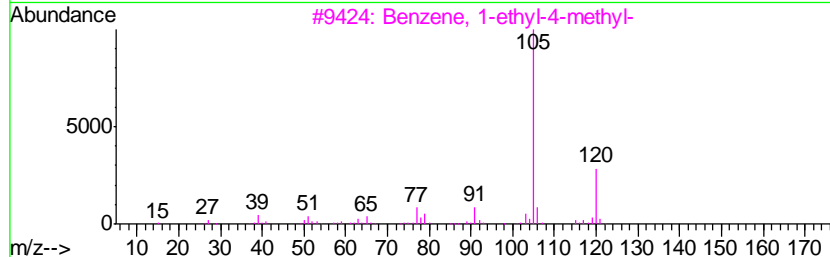
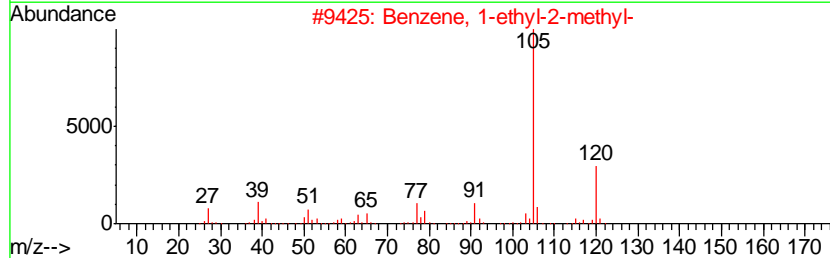
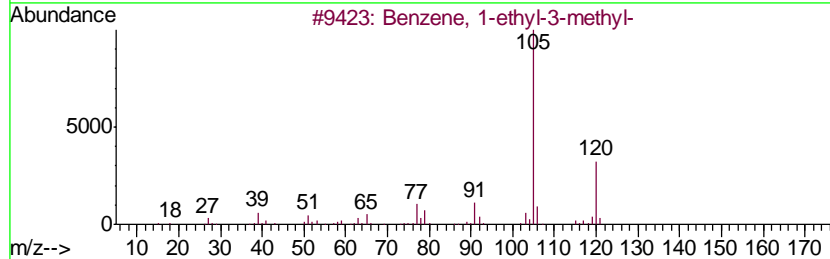
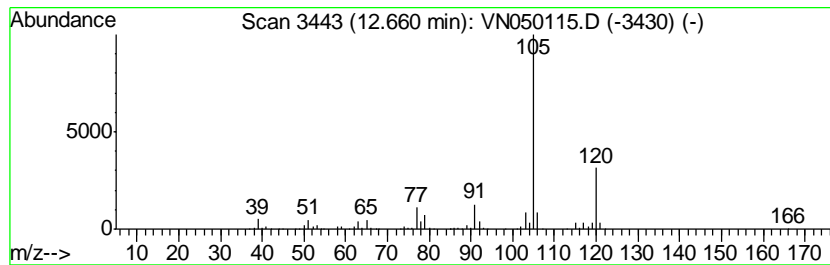
Quant Method : Z:\VOASRV\HPCHEM1\MSVOA_N\METHODS\82N072418W.M
 Quant Title : SW846 8260

TIC Library : C:\DATABASE\NIST11.L
 TIC Integration Parameters: LSCINT.P

 Peak Number 3 Benzene, 1-ethyl-3-methyl- Concentration Rank 3

R.T.	EstConc	Area	Relative to ISTD	R.T.
12.66	19.00 ug/l	1231730	1,4-Dichlorobenzene-d4	13.35

Hit#	of	Tentative ID	MW	MolForm	CAS#	Qual
1	5	Benzene, 1-ethyl-3-methyl-	120	C9H12	000620-14-4	97
2		Benzene, 1-ethyl-2-methyl-	120	C9H12	000611-14-3	95
3		Benzene, 1-ethyl-4-methyl-	120	C9H12	000622-96-8	91
4		Benzene, 1,2,3-trimethyl-	120	C9H12	000526-73-8	91
5		Benzene, 1,2,4-trimethyl-	120	C9H12	000095-63-6	91



Data Path : Z:\VOASRV\HPCHEM1\MSVOA N\DATA\VN072618\
 Data File : VN050115.D
 Acq On : 27 Jul 2018 5:43
 Operator : MD\SY
 Sample : J4184-09
 Misc : 5.00mL/MSVOA N/WATER
 ALS Vial : 46 Sample Multiplier: 1

Instrument :
 MSVOA_N
 ClientSampled :
 MW-11B

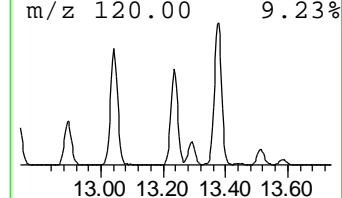
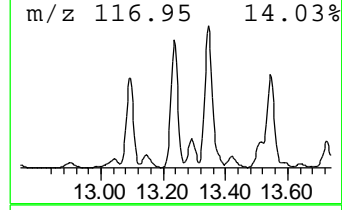
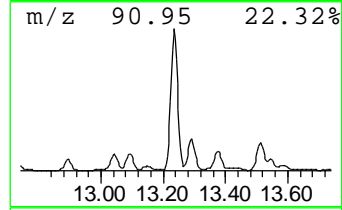
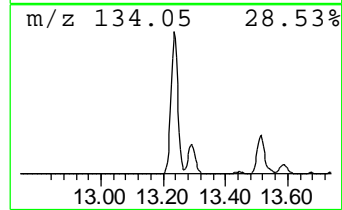
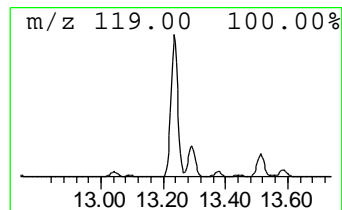
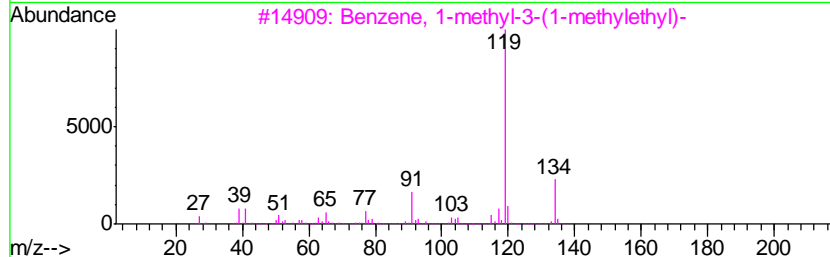
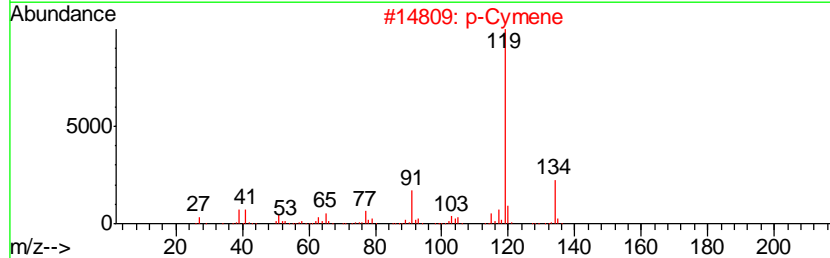
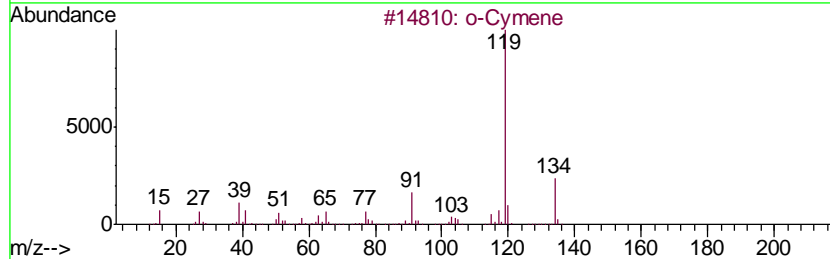
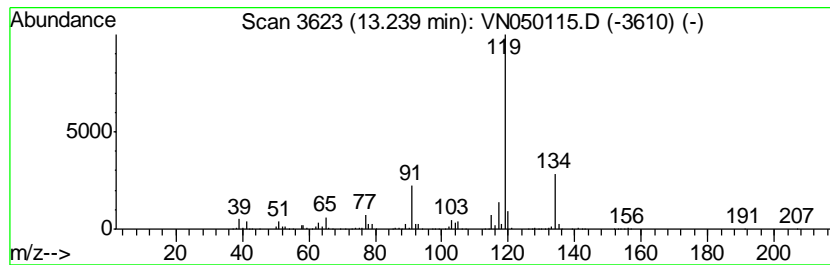
Quant Method : Z:\VOASRV\HPCHEM1\MSVOA_N\METHODS\82N072418W.M
 Quant Title : SW846 8260

TIC Library : C:\DATABASE\NIST11.L
 TIC Integration Parameters: LSCINT.P

 Peak Number 4 o-Cymene Concentration Rank 2

R.T.	EstConc	Area	Relative to ISTD	R.T.
13.24	22.10 ug/l	1432630	1,4-Dichlorobenzene-d4	13.35

Hit#	of	Tentative ID	MW	MolForm	CAS#	Qual
1	5	o-Cymene	134	C10H14	000527-84-4	97
2		p-Cymene	134	C10H14	000099-87-6	97
3		Benzene, 1-methyl-3-(1-methyleth...	134	C10H14	000535-77-3	95
4		Benzene, 1,2,4,5-tetramethyl-	134	C10H14	000095-93-2	91
5		Benzene, 4-ethyl-1,2-dimethyl-	134	C10H14	000934-80-5	91



Data Path : Z:\VOASRV\HPCHEM1\MSVOA N\DATA\VN072618\
 Data File : VN050115.D
 Acq On : 27 Jul 2018 5:43
 Operator : MD\SY
 Sample : J4184-09
 Misc : 5.00mL/MSVOA N/WATER
 ALS Vial : 46 Sample Multiplier: 1

Instrument :
 MSVOA_N
 ClientSampleID :
 MW-11B

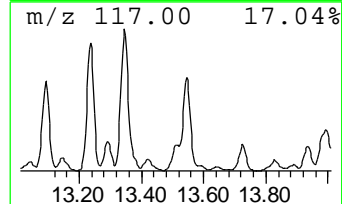
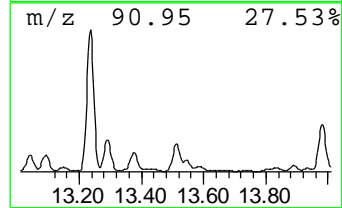
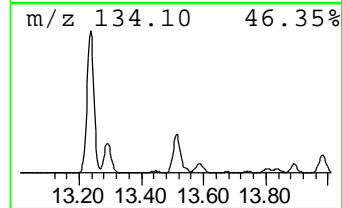
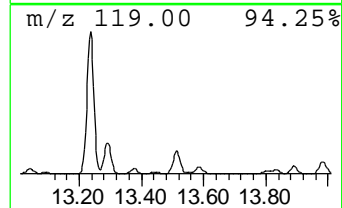
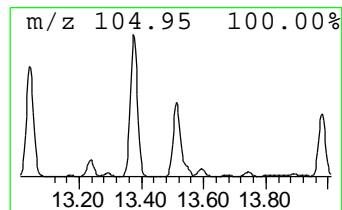
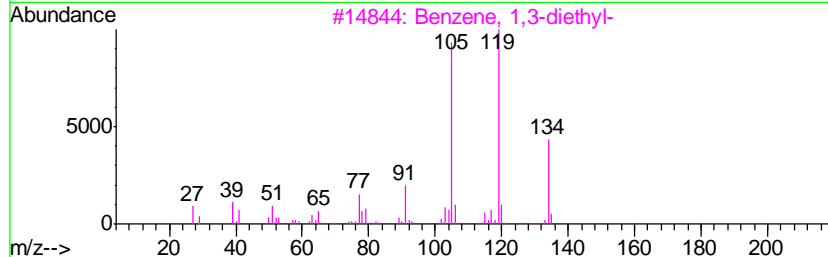
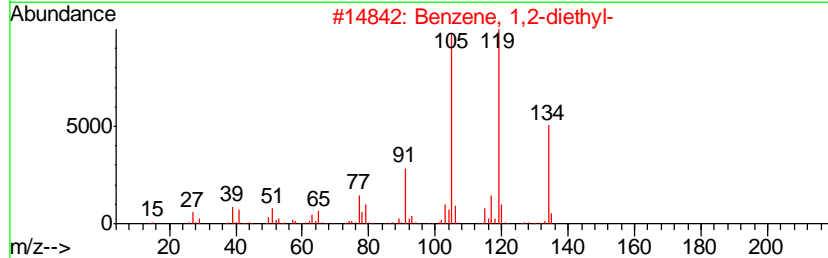
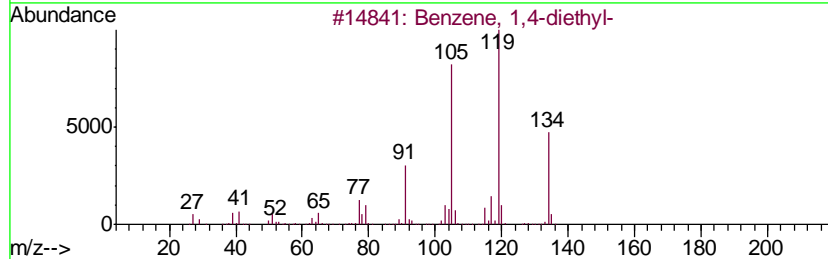
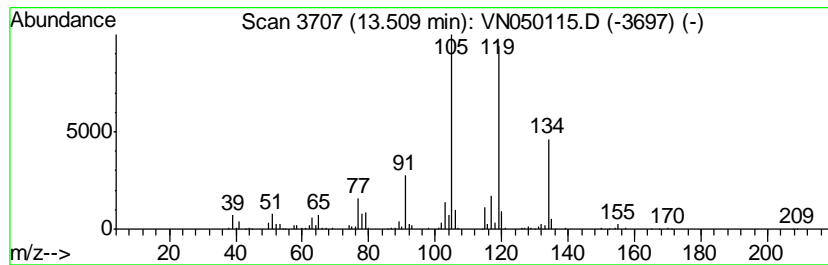
Quant Method : Z:\VOASRV\HPCHEM1\MSVOA_N\METHODS\82N072418W.M
 Quant Title : SW846 8260

TIC Library : C:\DATABASE\NIST11.L
 TIC Integration Parameters: LSCINT.P

 Peak Number 5 Benzene, 1,4-diethyl- Concentration Rank 8

R.T.	EstConc	Area	Relative to ISTD	R.T.
13.51	6.97 ug/l	451826	1,4-Dichlorobenzene-d4	13.35

Hit#	of	Tentative ID	MW	MolForm	CAS#	Qual
1	5	Benzene, 1,4-diethyl-	134	C10H14	000105-05-5	96
2		Benzene, 1,2-diethyl-	134	C10H14	000135-01-3	96
3		Benzene, 1,3-diethyl-	134	C10H14	000141-93-5	94
4		Benzene, 1-ethyl-3,5-dimethyl-	134	C10H14	000934-74-7	90
5		Benzene, 2-ethyl-1,3-dimethyl-	134	C10H14	002870-04-4	83



Data Path : Z:\VOASRV\HPCHEM1\MSVOA N\DATA\VN072618\
 Data File : VN050115.D
 Acq On : 27 Jul 2018 5:43
 Operator : MD\SY
 Sample : J4184-09
 Misc : 5.00mL/MSVOA N/WATER
 ALS Vial : 46 Sample Multiplier: 1

Instrument :
 MSVOA_N
 ClientSampled :
 MW-11B

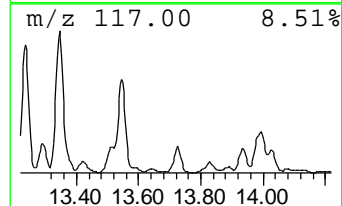
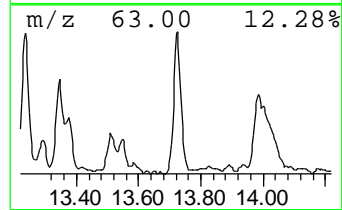
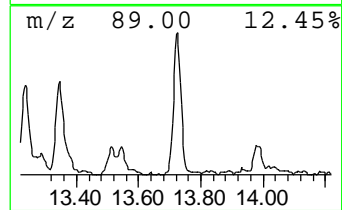
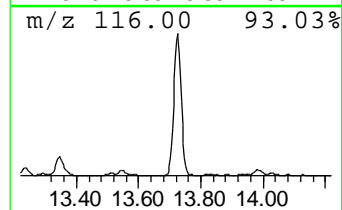
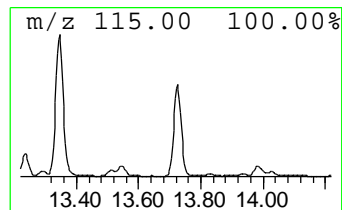
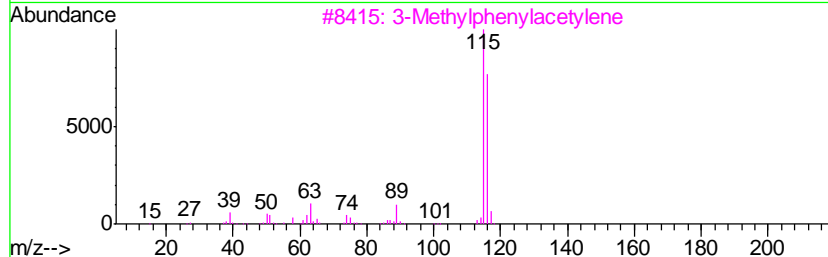
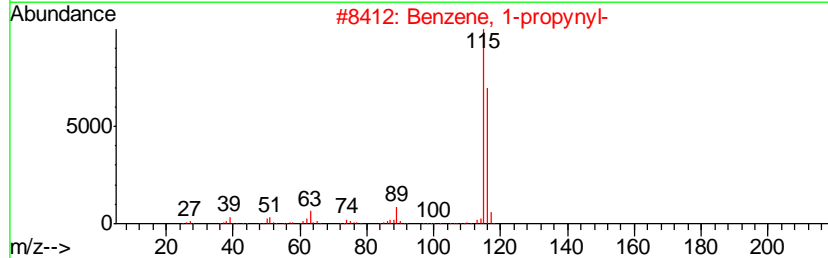
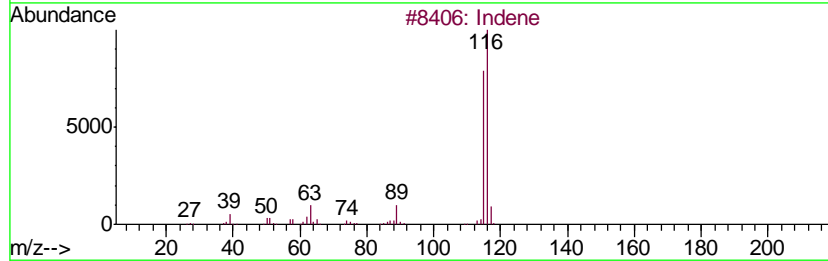
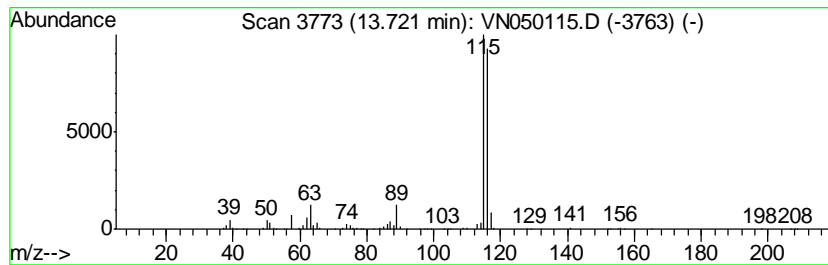
Quant Method : Z:\VOASRV\HPCHEM1\MSVOA_N\METHODS\82N072418W.M
 Quant Title : SW846 8260

TIC Library : C:\DATABASE\NIST11.L
 TIC Integration Parameters: LSCINT.P

 Peak Number 6 Indene Concentration Rank 7

R.T.	EstConc	Area	Relative to ISTD	R.T.
13.72	8.40 ug/l	544608	1,4-Dichlorobenzene-d4	13.35

Hit#	of	Tentative ID	MW	MolForm	CAS#	Qual
1	5	Indene	116	C9H8	000095-13-6	97
2		Benzene, 1-propynyl-	116	C9H8	000673-32-5	94
3		3-Methylphenylacetylene	116	C9H8	000766-82-5	91
4		Benzene, 1-ethynyl-4-methyl-	116	C9H8	000766-97-2	90
5		Benzene, 1,2-propadienyl-	116	C9H8	002327-99-3	90



Data Path : Z:\VOASRV\HPCHEM1\MSVOA N\DATA\VN072618\
 Data File : VN050115.D
 Acq On : 27 Jul 2018 5:43
 Operator : MD\SY
 Sample : J4184-09
 Misc : 5.00mL/MSVOA N/WATER
 ALS Vial : 46 Sample Multiplier: 1

Instrument :
 MSVOA_N
 ClientSampleID :
 MW-11B

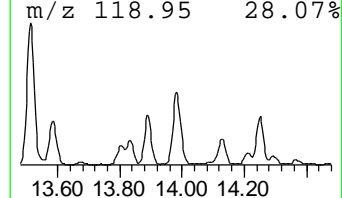
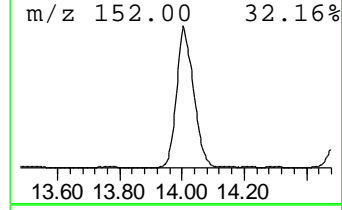
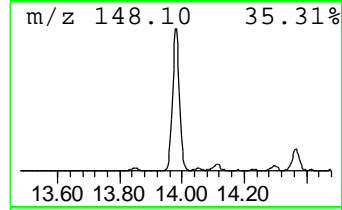
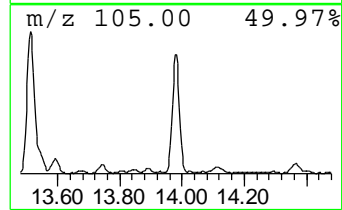
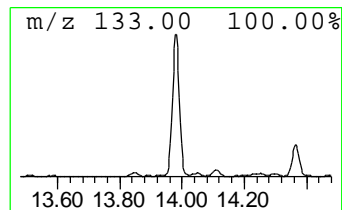
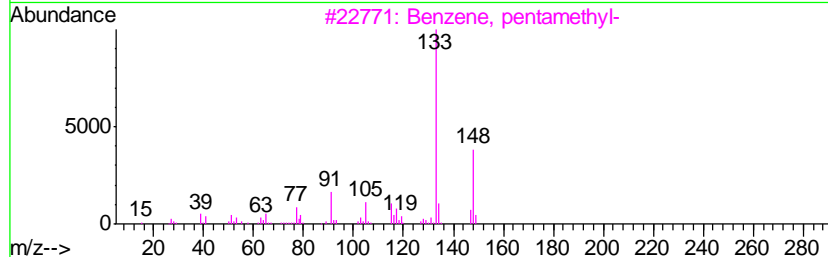
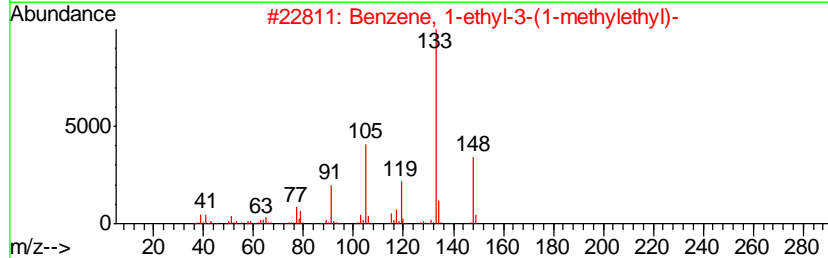
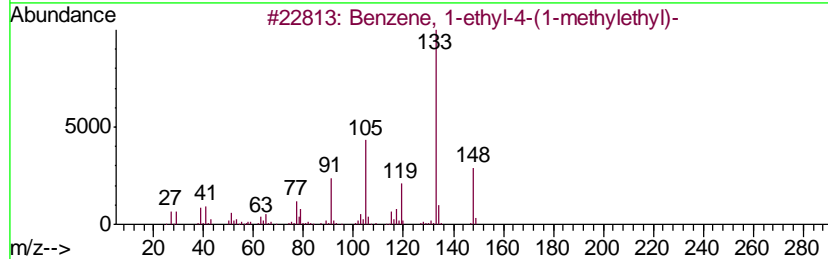
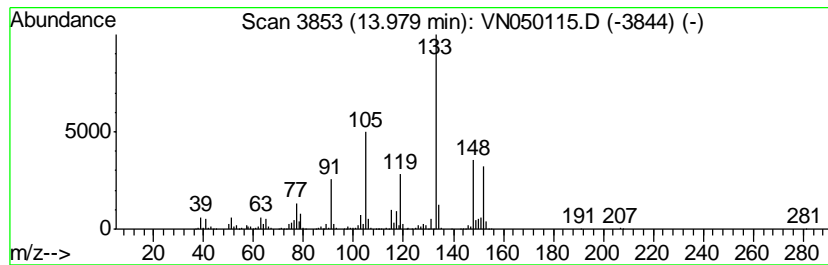
Quant Method : Z:\VOASRV\HPCHEM1\MSVOA_N\METHODS\82N072418W.M
 Quant Title : SW846 8260

TIC Library : C:\DATABASE\NIST11.L
 TIC Integration Parameters: LSCINT.P

 Peak Number 7 Benzene, 1-ethyl-4-(1-methyl... Concentration Rank 4

R.T.	EstConc	Area	Relative to ISTD	R.T.
13.98	15.05 ug/l	975686	1,4-Dichlorobenzene-d4	13.35

Hit#	of	Tentative ID	MW	MolForm	CAS#	Qual
1	5	Benzene, 1-ethyl-4-(1-methylethyl)-	148	C11H16	004218-48-8	95
2		Benzene, 1-ethyl-3-(1-methylethyl)-	148	C11H16	004920-99-4	95
3		Benzene, pentamethyl-	148	C11H16	000700-12-9	64
4		2-tert-Butyltoluene	148	C11H16	001074-92-6	60
5		Benzene, 1-(1,1-dimethylethyl)-3...	148	C11H16	001075-38-3	60



Data Path : Z:\VOASRV\HPCHEM1\MSVOA N\DATA\VN072618\
 Data File : VN050115.D
 Acq On : 27 Jul 2018 5:43
 Operator : MD\SY
 Sample : J4184-09
 Misc : 5.00mL/MSVOA N/WATER
 ALS Vial : 46 Sample Multiplier: 1

Instrument :
 MSVOA_N
 ClientSampled :
 MW-11B

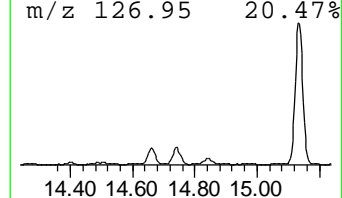
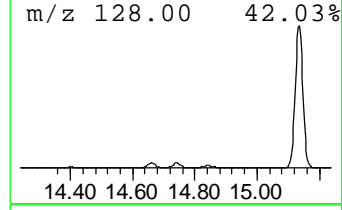
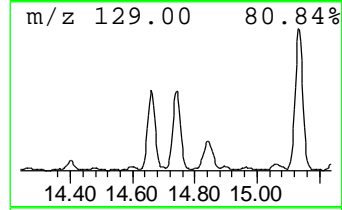
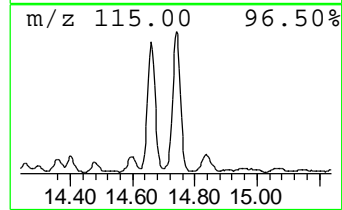
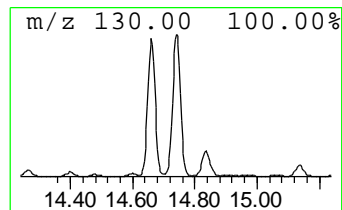
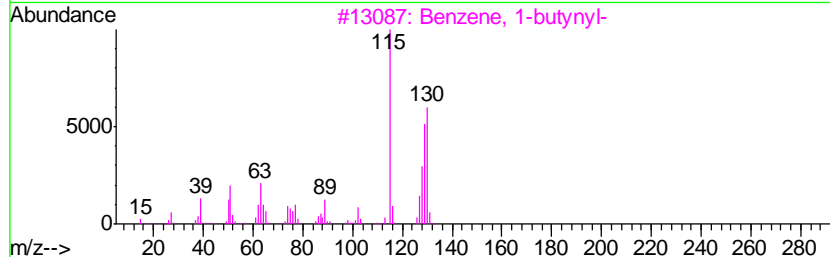
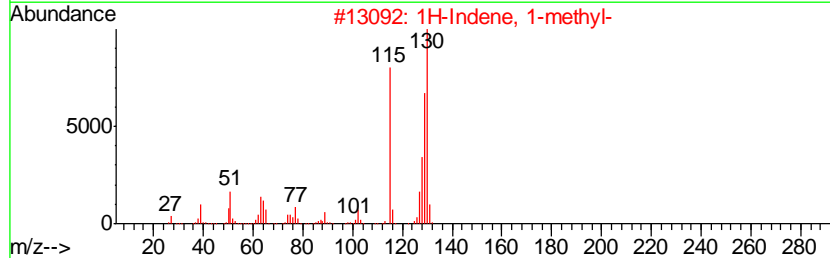
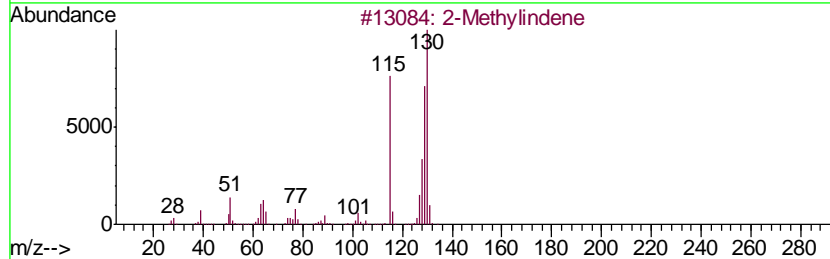
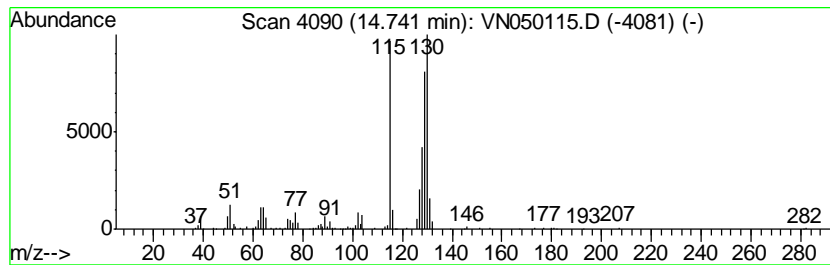
Quant Method : Z:\VOASRV\HPCHEM1\MSVOA_N\METHODS\82N072418W.M
 Quant Title : SW846 8260

TIC Library : C:\DATABASE\NIST11.L
 TIC Integration Parameters: LSCINT.P

 Peak Number 8 2-Methylindene Concentration Rank 10

R.T.	EstConc	Area	Relative to ISTD	R.T.
14.74	5.56 ug/l	360172	1,4-Dichlorobenzene-d4	13.35

Hit#	of	Tentative ID	MW	MolForm	CAS#	Qual
1	5	2-Methylindene	130	C10H10	002177-47-1	96
2		1H-Indene, 1-methyl-	130	C10H10	000767-59-9	94
3		Benzene, 1-butynyl-	130	C10H10	000622-76-4	94
4		Benzene, 1-methyl-1,2-propadienyl-	130	C10H10	022433-39-2	93
5		Cycloprop[alindene, 1,1a,6,6a-te...	130	C10H10	015677-15-3	92



Data Path : Z:\VOASRV\HPCHEM1\MSVOA N\DATA\VN072618\
 Data File : VN050115.D
 Acq On : 27 Jul 2018 5:43
 Operator : MD\SY
 Sample : J4184-09
 Misc : 5.00mL/MSVOA N/WATER
 ALS Vial : 46 Sample Multiplier: 1

Instrument :
 MSVOA_N
 ClientSampled :
 MW-11B

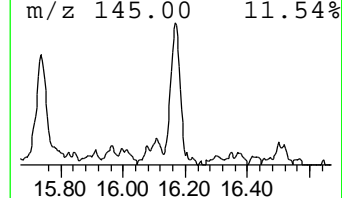
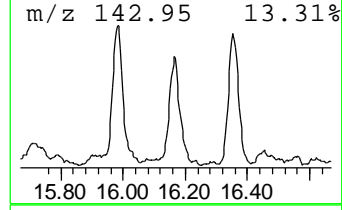
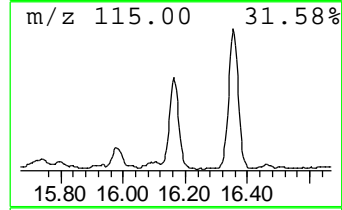
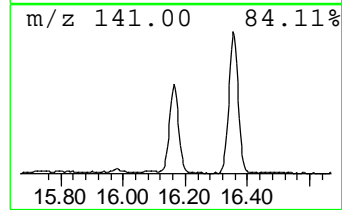
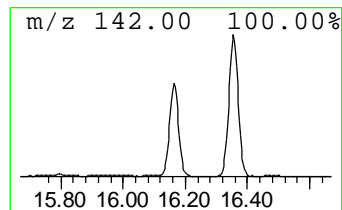
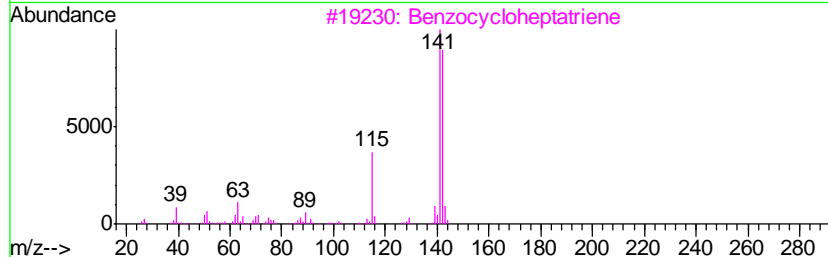
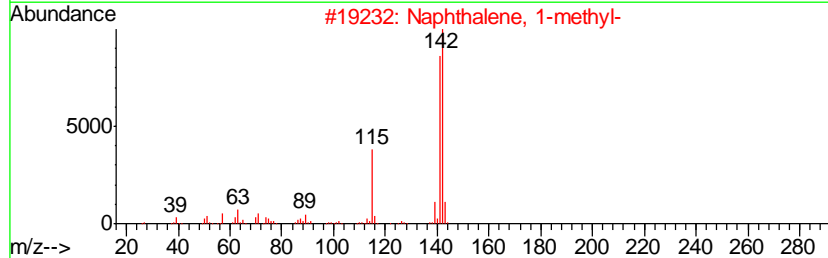
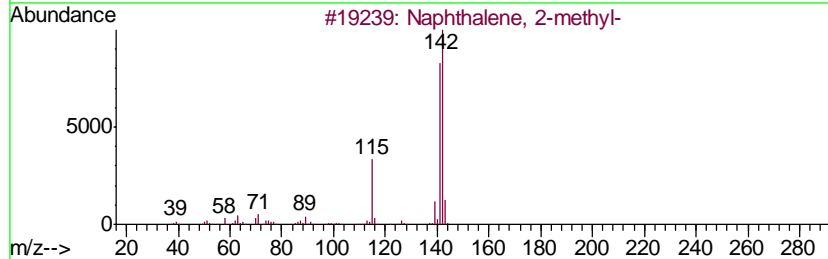
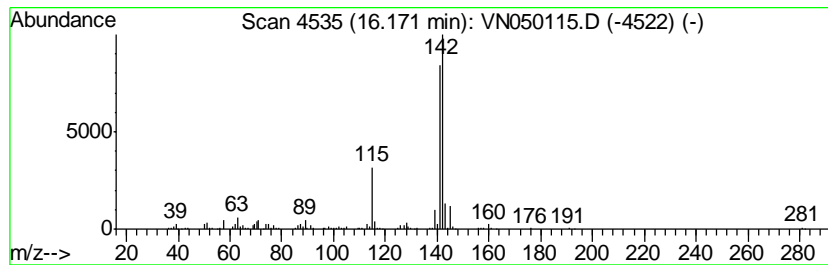
Quant Method : Z:\VOASRV\HPCHEM1\MSVOA_N\METHODS\82N072418W.M
 Quant Title : SW846 8260

TIC Library : C:\DATABASE\NIST11.L
 TIC Integration Parameters: LSCINT.P

 Peak Number 9 Naphthalene, 1-methyl- Concentration Rank 9

R.T.	EstConc	Area	Relative to ISTD	R.T.
16.17	6.62 ug/l	428922	1,4-Dichlorobenzene-d4	13.35

Hit#	of	Tentative ID	MW	MolForm	CAS#	Qual
1	5	Naphthalene, 2-methyl-	142	C11H10	000091-57-6	96
2		Naphthalene, 1-methyl-	142	C11H10	000090-12-0	96
3		Benzocycloheptatriene	142	C11H10	000264-09-5	90
4		1,4-Methanonaphthalene, 1,4-dihy...	142	C11H10	004453-90-1	90
5		1-Naphthaleneacetamide	185	C12H11NO	000086-86-2	53



Data Path : Z:\VOASRV\HPCHEM1\MSVOA_N\DATA\VN072618\
Data File : VN050115.D
Acq On : 27 Jul 2018 5:43
Operator : MD\SY
Sample : J4184-09
Misc : 5.00mL/MSVOA_N/WATER
ALS Vial : 46 Sample Multiplier: 1

Instrument :
MSVOA_N
ClientSampleId :
MW-11B

Quant Method : Z:\VOASRV\HPCHEM1\MSVOA_N\METHODS\82N072418W.M
Quant Title : SW846 8260

TIC Library : C:\DATABASE\NIST11.L
TIC Integration Parameters: LSCINT.P

TIC Top Hit name	RT	EstConc	Units	Response	--Internal Standard--			
					#	RT	Resp	Conc
Acetic acid	8.27	9.7	ug/l	533794	2	8.59	2747520	50.0
Benzene, 1-ethyl-...	12.66	19.0	ug/l	1231730	4	13.35	3241460	50.0
o-Cymene	13.24	22.1	ug/l	1432630	4	13.35	3241460	50.0
Benzene, 1,4-diet...	13.51	7.0	ug/l	451826	4	13.35	3241460	50.0
Indene	13.72	8.4	ug/l	544608	4	13.35	3241460	50.0
Benzene, 1-ethyl-...	13.98	15.1	ug/l	975686	4	13.35	3241460	50.0
2-Methylindene	14.74	5.6	ug/l	360172	4	13.35	3241460	50.0
Naphthalene, 1-me...	16.17	6.6	ug/l	428922	4	13.35	3241460	50.0