

Data Path : Z:\VOASRV\HPCHEM1\MSVOA N\DATA\VN072718\
 Data File : VN050143.D
 Acq On : 27 Jul 2018 20:47
 Operator : MD\SY
 Sample : PB111513ZHE#03
 Misc : 5.00mL/MSVOA N/WATER
 ALS Vial : 21 Sample Multiplier: 1

Instrument :
 MSVOA_N
 ClientSampleId :
 PB111513ZHE#03

Quant Time: Jul 27 23:34:51 2018
 Quant Method : Z:\VOASRV\HPCHEM1\MSVOA_N\METHODS\82N072418W.M
 Quant Title : SW846 8260
 QLast Update : Thu Jul 26 18:10:10 2018
 Response via : Initial Calibration

Internal Standards	R.T.	QIon	Response	Conc	Units	Dev(Min)
1) Pentafluorobenzene	7.67	168	712452	50.00	ug/l	0.00
34) 1,4-Difluorobenzene	8.59	114	1164634	50.00	ug/l	0.00
63) Chlorobenzene-d5	11.41	117	984133	50.00	ug/l	0.00
72) 1,4-Dichlorobenzene-d4	13.35	152	342208	50.00	ug/l	0.00

System Monitoring Compounds

33) 1,2-Dichloroethane-d4	8.03	65	490740	49.37	ug/l	0.00
Spiked Amount	50.000		Recovery	=	98.74%	
35) Dibromofluoromethane	7.60	113	430552	45.28	ug/l	0.00
Spiked Amount	50.000		Recovery	=	90.56%	
50) Toluene-d8	10.09	98	1574465	45.04	ug/l	0.00
Spiked Amount	50.000		Recovery	=	90.08%	
62) 4-Bromofluorobenzene	12.40	95	441082	38.32	ug/l	0.00
Spiked Amount	50.000		Recovery	=	76.64%	

Target Compounds

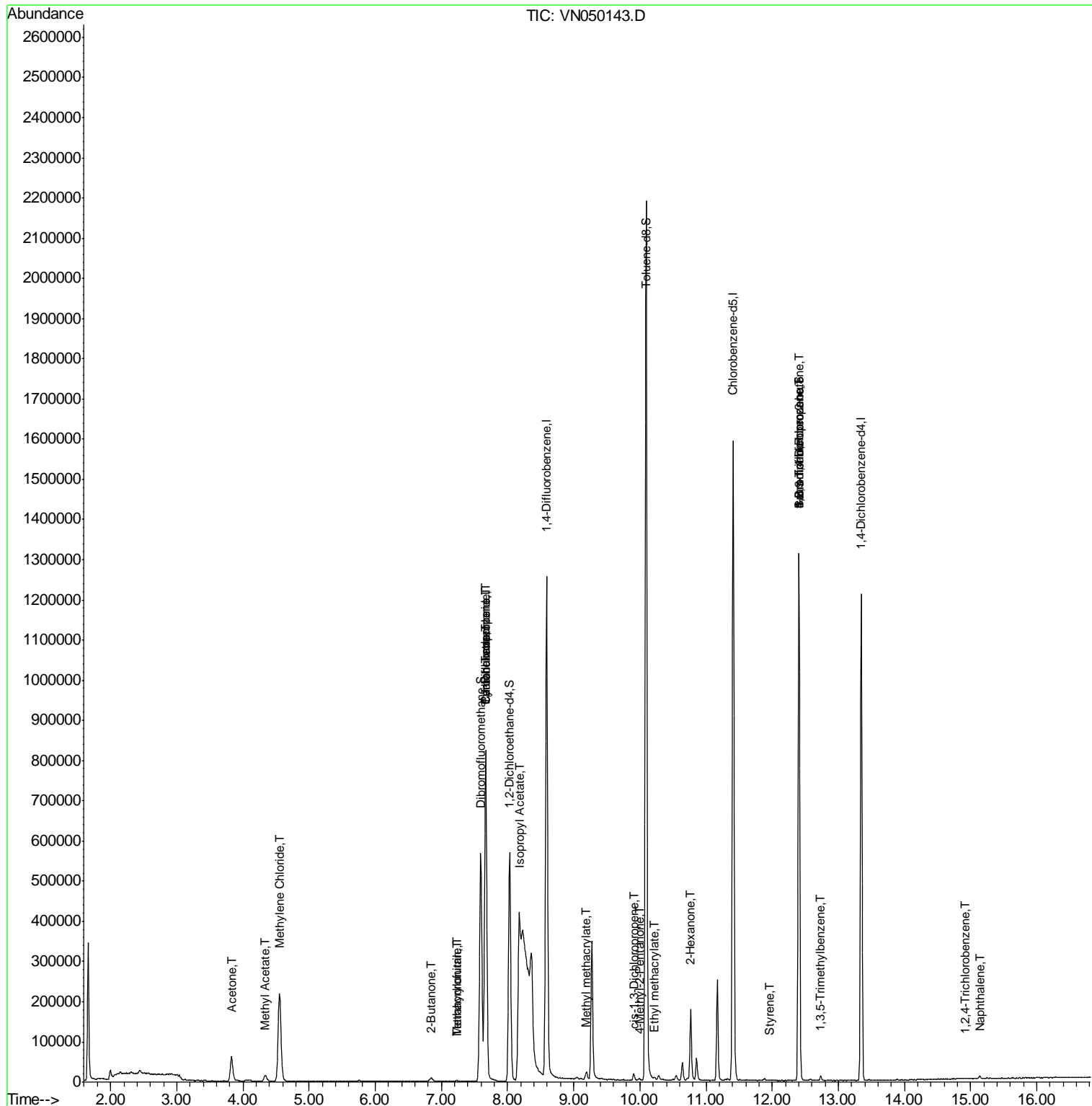
						Qvalue
5) Bromomethane	2.57	94	984	Below Cal		95
16) Acetone	3.83	43	105104	41.26	ug/l	96
18) Methyl Acetate	4.34	43	28575	1.56	ug/l	94
20) Methylene Chloride	4.55	84	173518	18.91	ug/l	96
25) 2-Butanone	6.86	43	3685	0.97	ug/l	92
29) Tetrahydrofuran	7.23	42	1186	0.48	ug/l #	78
31) Cyclohexane	7.67	56	12727	0.86	ug/l #	1
36) 1,1-Dichloropropene	7.67	75	50029	3.81	ug/l #	48
38) Carbon Tetrachloride	7.67	117	65252	4.69	ug/l #	17
41) Methacrylonitrile	7.23	41	910	2.93	ug/l #	22
43) Isopropyl Acetate	8.18	43	542533	31.04	ug/l #	85
48) Methyl methacrylate	9.18	41	10355	1.31	ug/l #	23
51) 4-Methyl-2-Pentanone	9.99	43	2729	0.30	ug/l	98
54) cis-1,3-Dichloropropene	9.90	75	3271	0.22	ug/l #	62
56) Ethyl methacrylate	10.23	69	3282	2.28	ug/l #	73
59) 2-Hexanone	10.77	43	24801	8.85	ug/l #	59
70) Styrene	11.97	104	423	0.94	ug/l #	53
71) Bromoform	12.40	173	3868	0.56	ug/l #	1
75) 1,1,2,2-Tetrachloroethane	12.41	83	95	Below Cal	#	25
76) 1,2,3-Trichloropropane	12.40	75	215453	33.88	ug/l #	100
80) 1,3,5-Trimethylbenzene	12.73	105	5757	0.28	ug/l	95
81) trans-1,4-Dichloro-2-buten	12.40	75	215453	107.45	ug/l #	13
92) 1,2-Dibromo-3-Chloropropan	14.26	75	331	Below Cal	#	1
93) 1,2,4-Trichlorobenzene	14.92	180	110	3.10	ug/l #	11
95) Naphthalene	15.14	128	6060	4.77	ug/l #	91

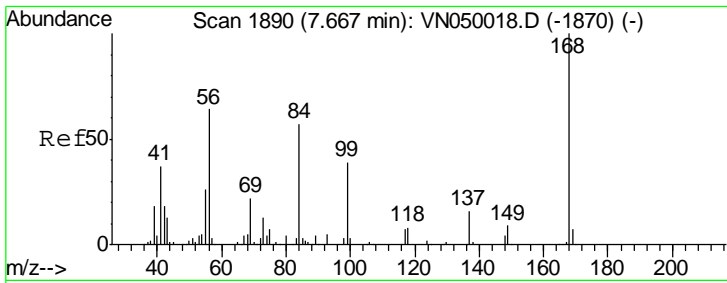
(#) = qualifier out of range (m) = manual integration (+) = signals summed

Data Path : Z:\VOASRV\HPCHEM1\MSVOA N\DATA\VN072718\
 Data File : VN050143.D
 Acq On : 27 Jul 2018 20:47
 Operator : MD\SY
 Sample : PB111513ZHE#03
 Misc : 5.00mL/MSVOA N/WATER
 ALS Vial : 21 Sample Multiplier: 1

Instrument :
 MSVOA_N
 ClientSampleId :
 PB111513ZHE#03

Quant Time: Jul 27 23:34:51 2018
 Quant Method : Z:\VOASRV\HPCHEM1\MSVOA_N\METHODS\82N072418W.M
 Quant Title : SW846 8260
 QLast Update : Thu Jul 26 18:10:10 2018
 Response via : Initial Calibration

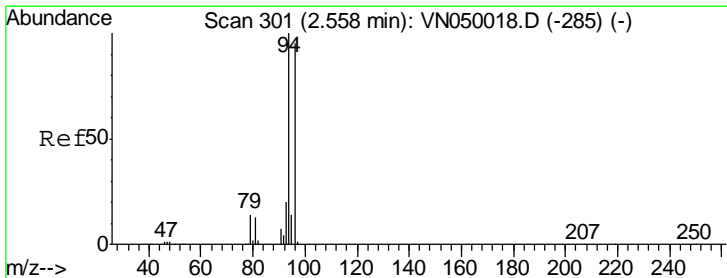
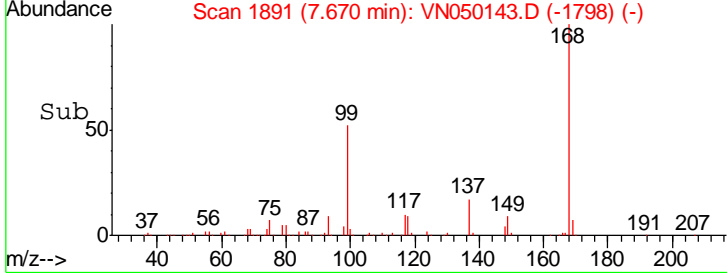
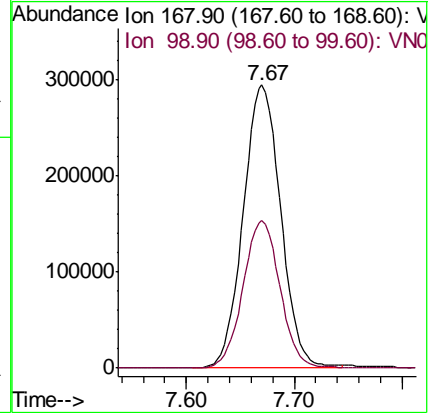
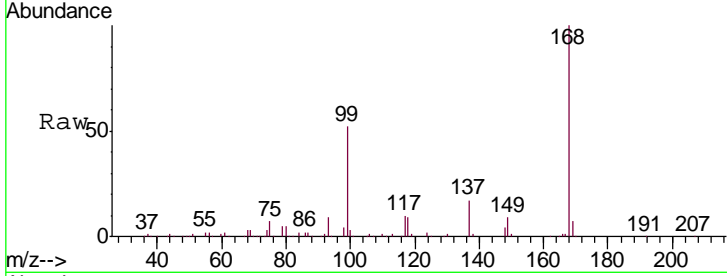




#1
 Pentafluorobenzene
 Concen: 50.00 ug/l
 RT: 7.67 min Scan# 1891
 Delta R.T. 0.00 min
 Lab File: VN050143.D
 Acq: 27 Jul 2018 20:47

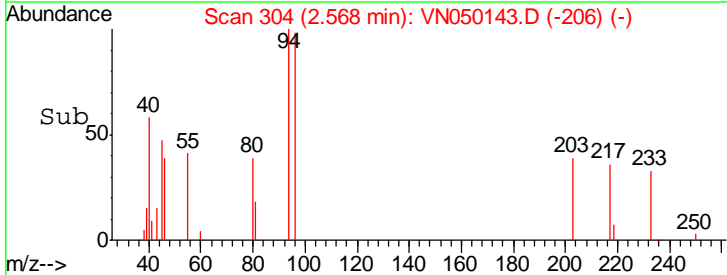
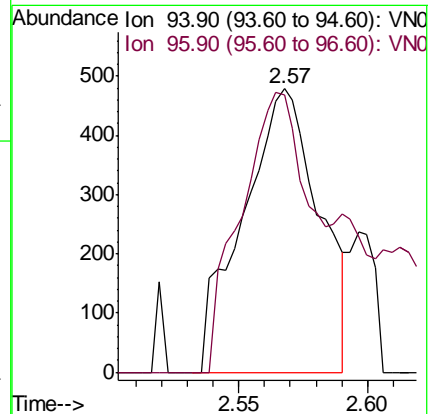
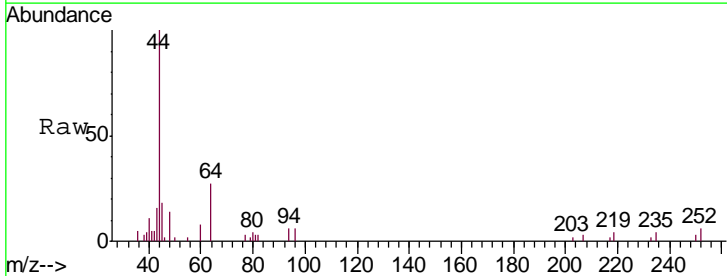
Instrument :
 MSVOA_N
 ClientSampled :
 PB111513ZHE#03

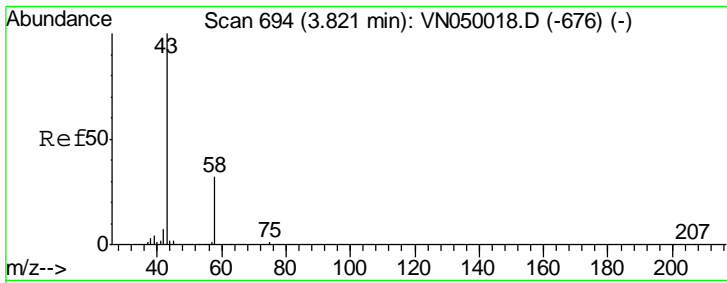
Tgt Ion: 168 Resp: 712452
 Ion Ratio Lower Upper
 168 100
 99 52.2 40.0 60.0



#5
 Bromomethane
 Concen: Below Cal
 RT: 2.57 min Scan# 304
 Delta R.T. 0.02 min
 Lab File: VN050143.D
 Acq: 27 Jul 2018 20:47

Tgt Ion: 94 Resp: 984
 Ion Ratio Lower Upper
 94 100
 96 98.1 74.6 112.0

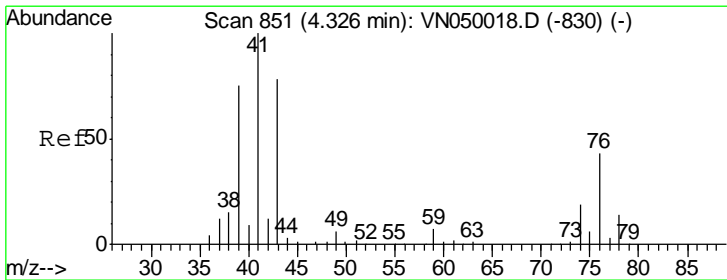
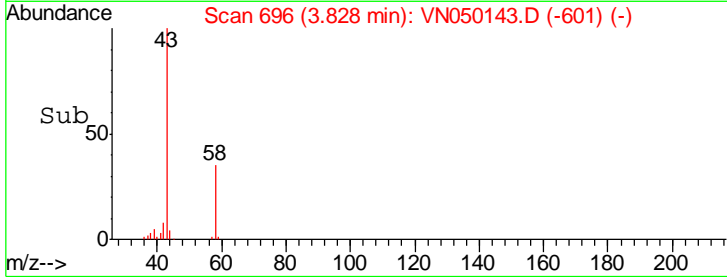
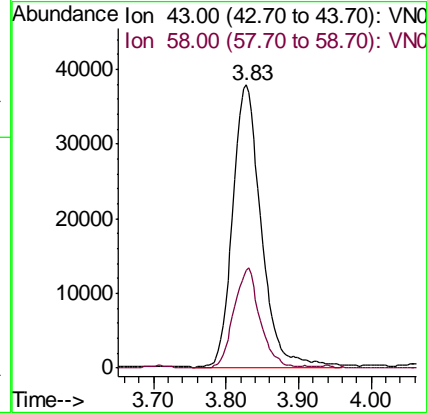
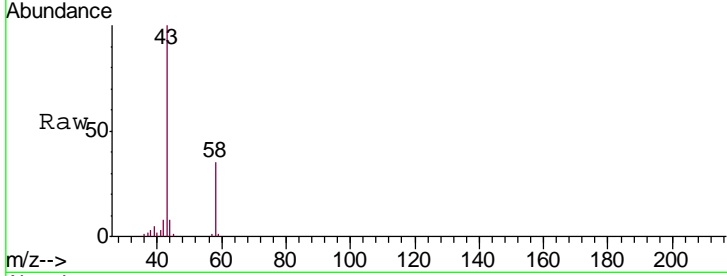




#16
 Acetone
 Concen: 41.26 ug/l
 RT: 3.83 min Scan# 696
 Delta R.T. 0.00 min
 Lab File: VN050143.D
 Acq: 27 Jul 2018 20:47

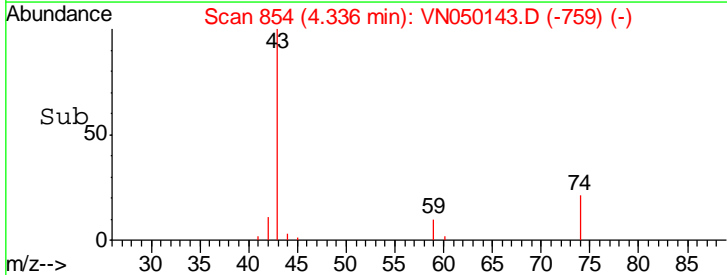
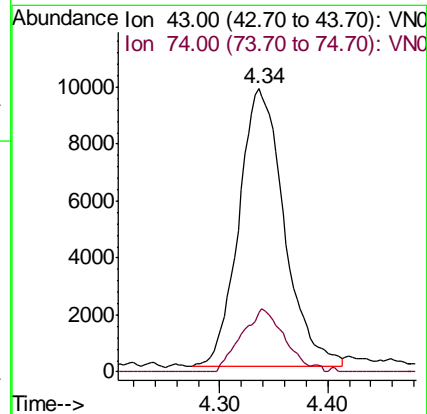
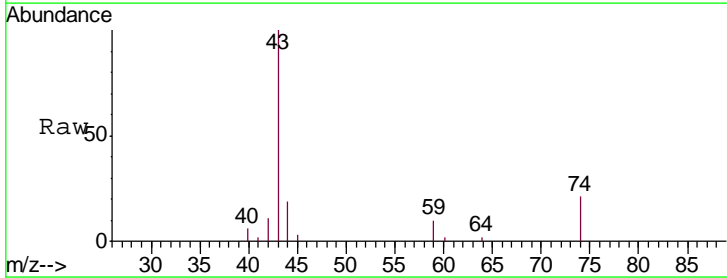
Instrument : MSVOA_N
 ClientSampled : PB111513ZHE#03

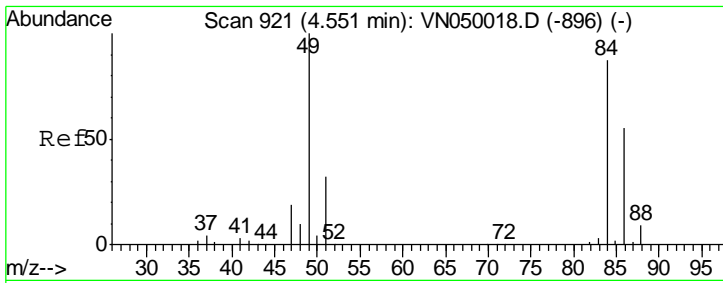
Tgt Ion: 43 Resp: 105104
 Ion Ratio Lower Upper
 43 100
 58 34.6 25.8 38.8



#18
 Methyl Acetate
 Concen: 1.56 ug/l
 RT: 4.34 min Scan# 854
 Delta R.T. 0.00 min
 Lab File: VN050143.D
 Acq: 27 Jul 2018 20:47

Tgt Ion: 43 Resp: 28575
 Ion Ratio Lower Upper
 43 100
 74 21.2 19.2 28.8



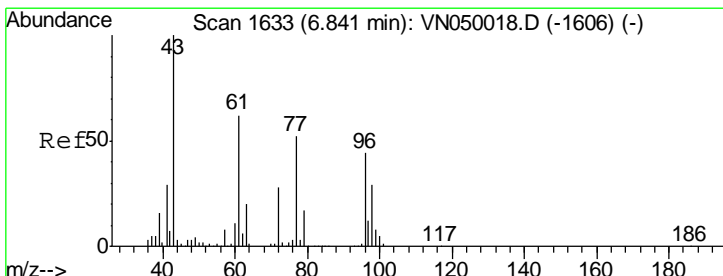
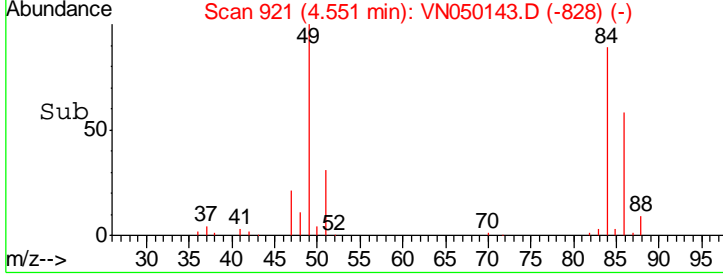
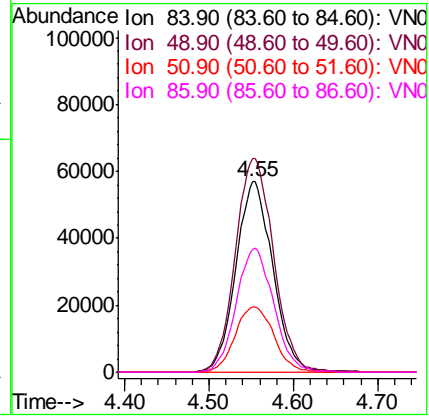
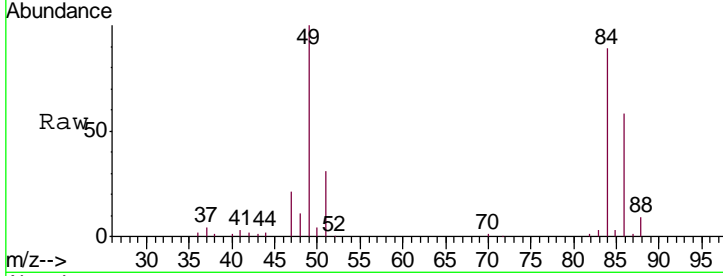


#20
 Methylene Chloride
 Concen: 18.91 ug/l
 RT: 4.55 min Scan# 921
 Delta R.T. 0.00 min
 Lab File: VN050143.D
 Acq: 27 Jul 2018 20:47

Instrument : MSVOA_N
 ClientSampleId : PB111513ZHE#03

Tgt Ion: 84 Resp: 173518

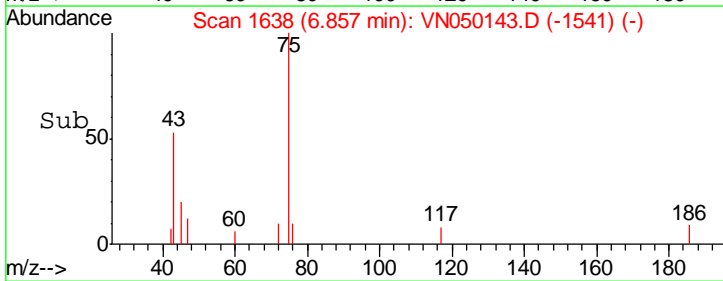
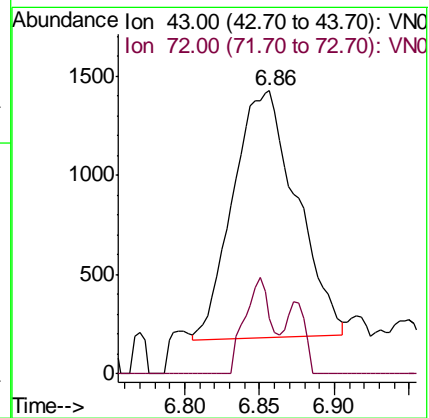
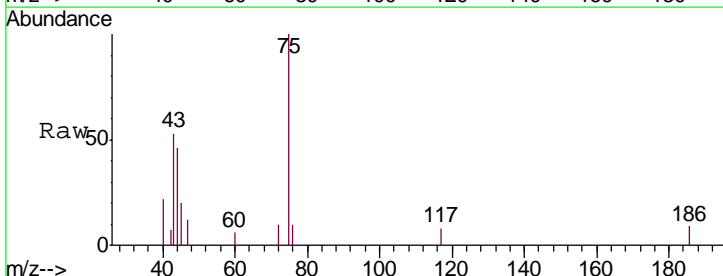
Ion	Ratio	Lower	Upper
84	100		
49	111.9	94.8	142.2
51	34.4	28.3	42.5
86	64.7	51.0	76.6

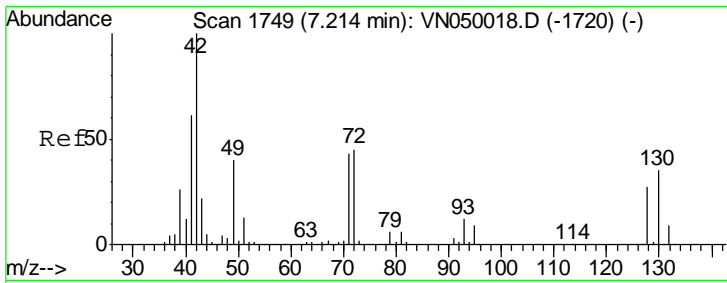


#25
 2-Butanone
 Concen: 0.97 ug/l
 RT: 6.86 min Scan# 1638
 Delta R.T. 0.01 min
 Lab File: VN050143.D
 Acq: 27 Jul 2018 20:47

Tgt Ion: 43 Resp: 3685

Ion	Ratio	Lower	Upper
43	100		
72	22.6	21.5	32.3

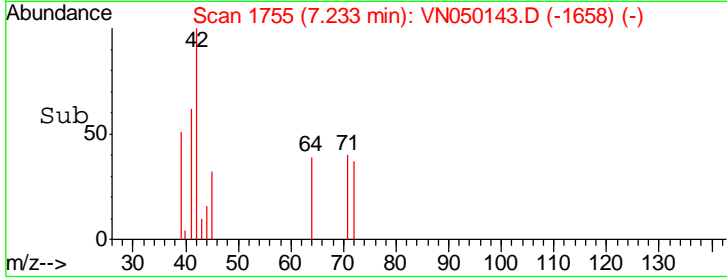
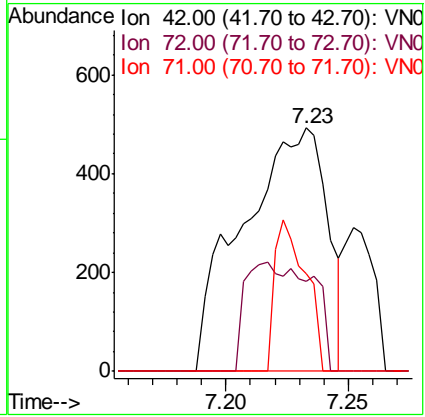
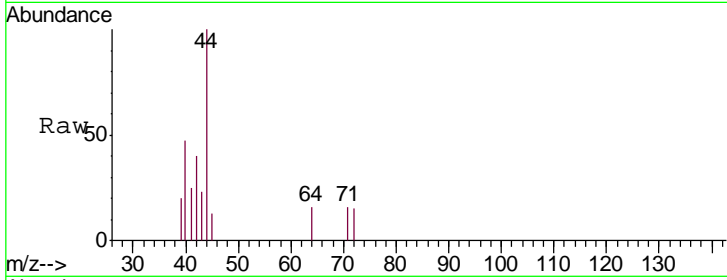




#29
 Tetrahydrofuran
 Concen: 0.48 ug/l
 RT: 7.23 min Scan# 1755
 Delta R.T. 0.01 min
 Lab File: VN050143.D
 Acq: 27 Jul 2018 20:47

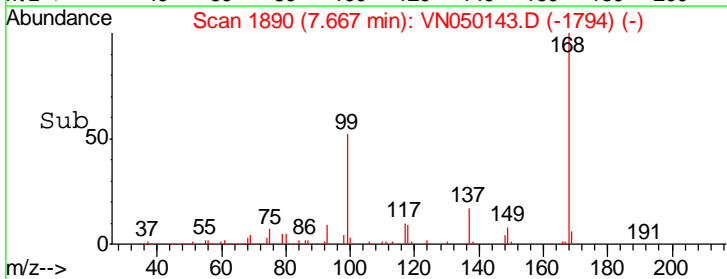
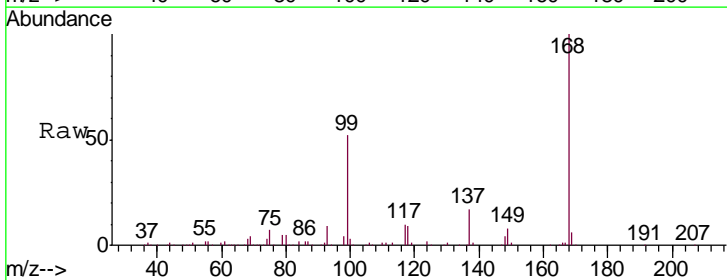
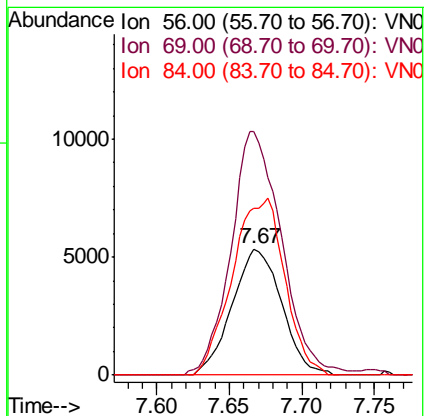
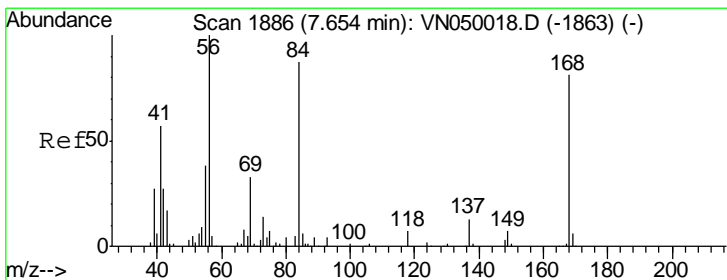
Instrument : MSVOA_N
 ClientSampleID : PB111513ZHE#03

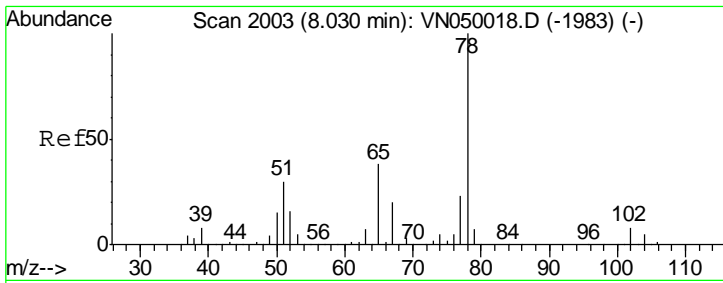
Tgt Ion	Resp	Lower	Upper
42	1186		
72	35.0	35.9	53.9#
71	22.9	33.7	50.5#



#31
 Cyclohexane
 Concen: 0.86 ug/l
 RT: 7.67 min Scan# 1890
 Delta R.T. 0.01 min
 Lab File: VN050143.D
 Acq: 27 Jul 2018 20:47

Tgt Ion	Resp	Lower	Upper
56	12727		
69	189.9	26.2	39.4#
84	131.8	67.4	101.0#

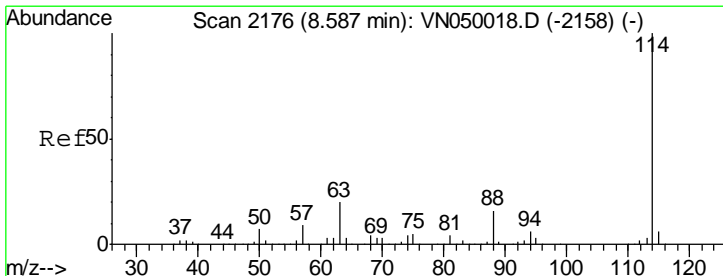
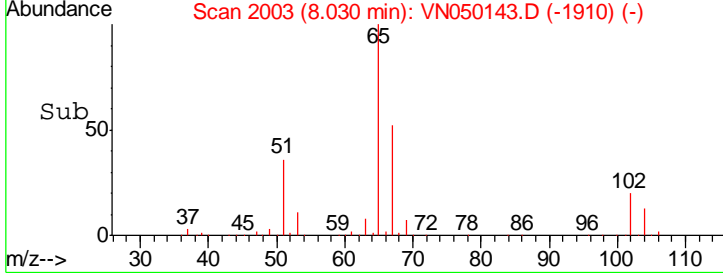
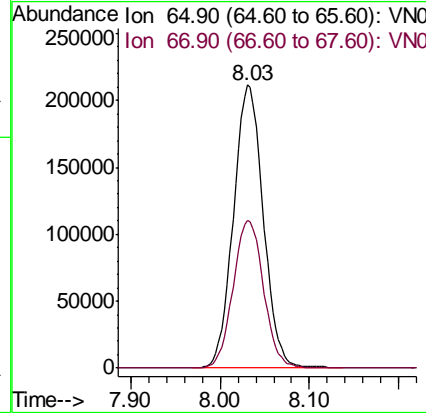
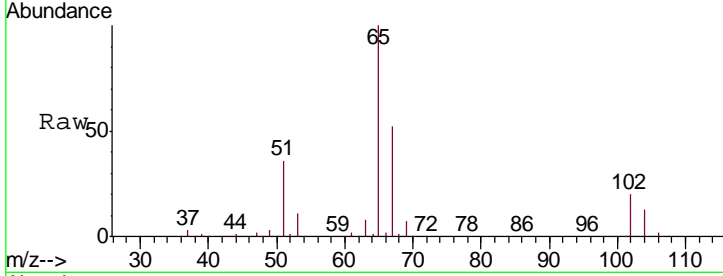




#33
 1,2-Dichloroethane-d4
 Concen: 49.37 ug/l
 RT: 8.03 min Scan# 2003
 Delta R.T. 0.00 min
 Lab File: VN050143.D
 Acq: 27 Jul 2018 20:47

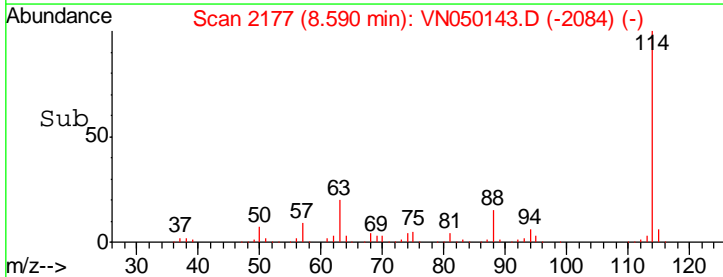
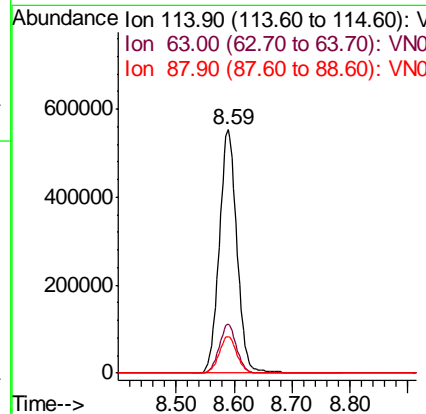
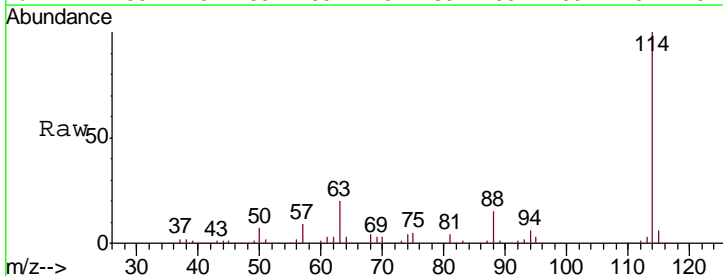
Instrument : MSVOA_N
 ClientSampleId : PB111513ZHE#03

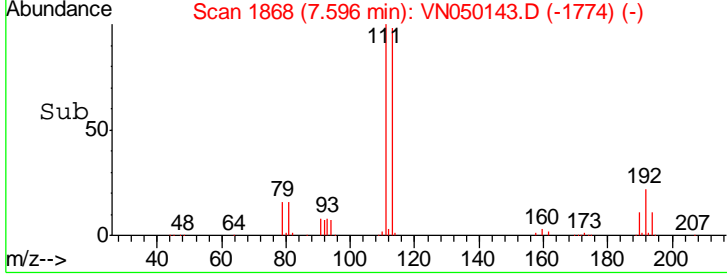
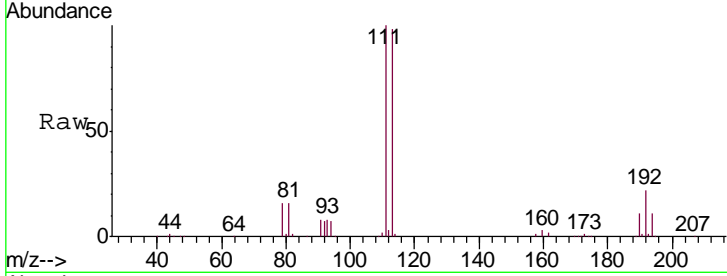
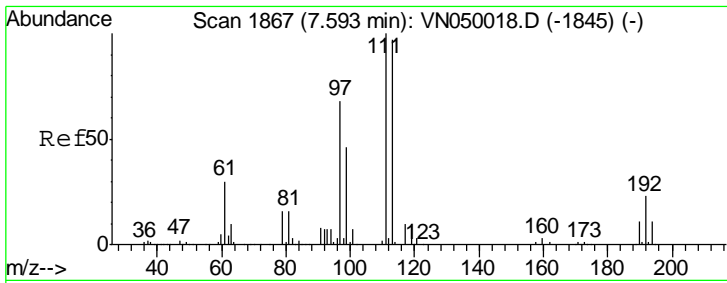
Tgt Ion	Resp	Lower	Upper
65	100		
67	53.3	0.0	108.4



#34
 1,4-Difluorobenzene
 Concen: 50.00 ug/l
 RT: 8.59 min Scan# 2177
 Delta R.T. 0.00 min
 Lab File: VN050143.D
 Acq: 27 Jul 2018 20:47

Tgt Ion	Resp	Lower	Upper
114	100		
63	20.0	0.0	40.0
88	15.0	0.0	31.2

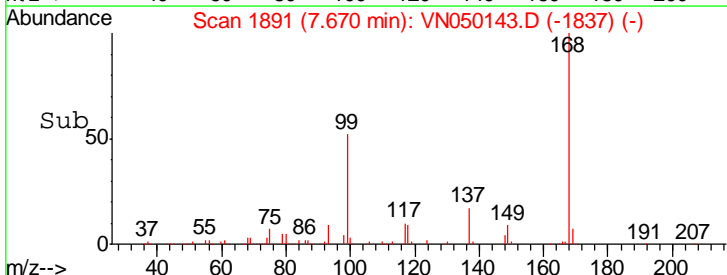
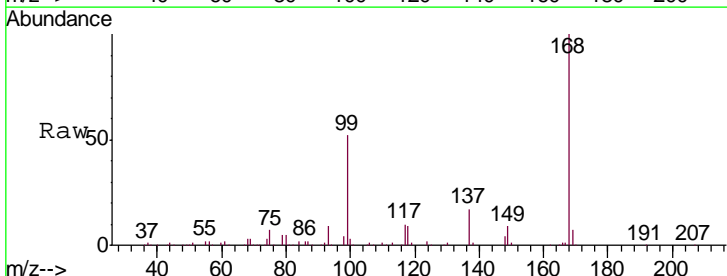
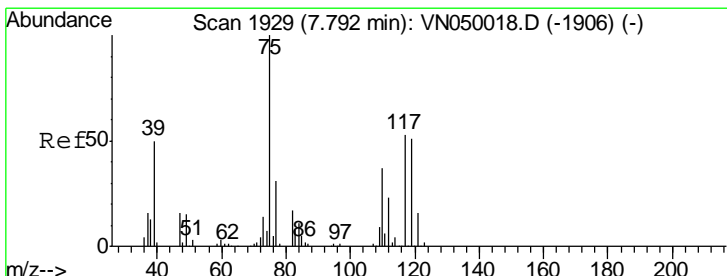
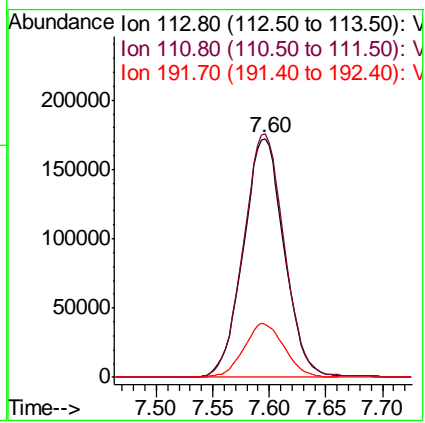




#35
 Dibromofluoromethane
 Concen: 45.28 ug/l
 RT: 7.60 min Scan# 1868
 Delta R.T. 0.00 min
 Lab File: VN050143.D
 Acq: 27 Jul 2018 20:47

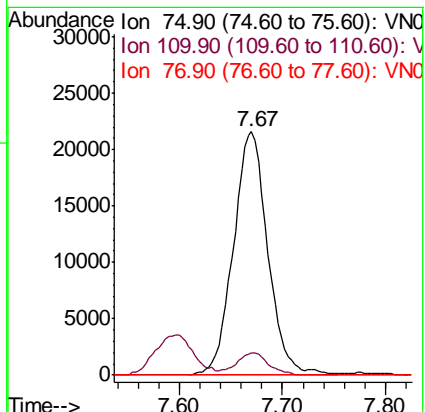
Instrument : MSVOA_N
 ClientSampled : PB111513ZHE#03

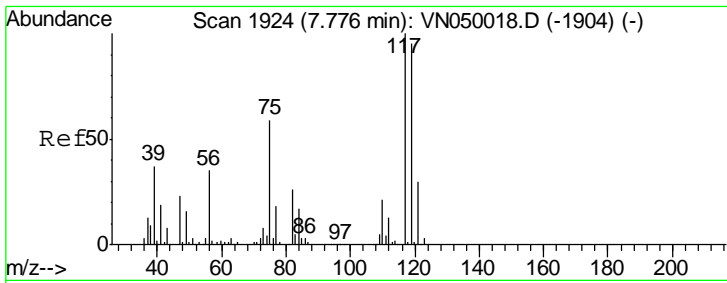
Tgt Ion	Resp	Lower	Upper
113	100		
111	103.1	80.7	121.1
192	22.4	17.8	26.6



#36
 1,1-Dichloropropene
 Concen: 3.81 ug/l
 RT: 7.67 min Scan# 1891
 Delta R.T. -0.13 min
 Lab File: VN050143.D
 Acq: 27 Jul 2018 20:47

Tgt Ion	Resp	Lower	Upper
75	100		
110	8.5	18.4	55.2#
77	0.0	25.3	37.9#

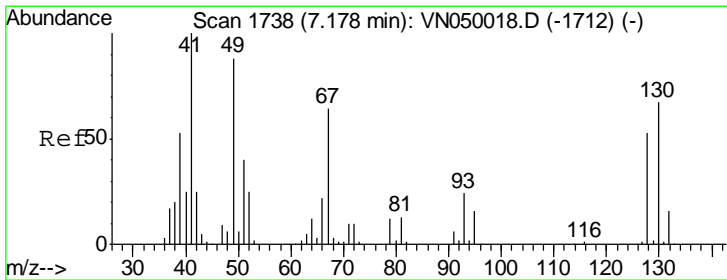
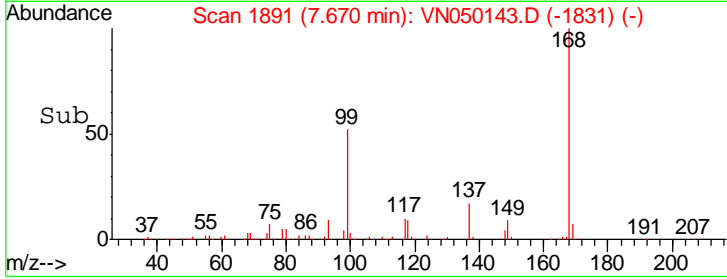
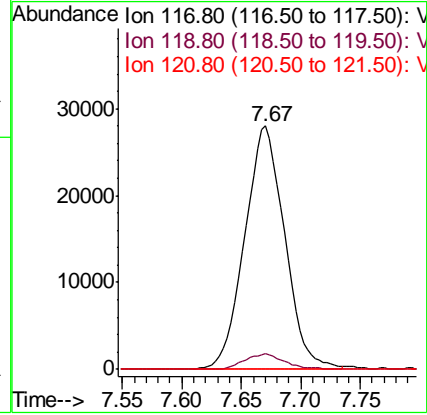
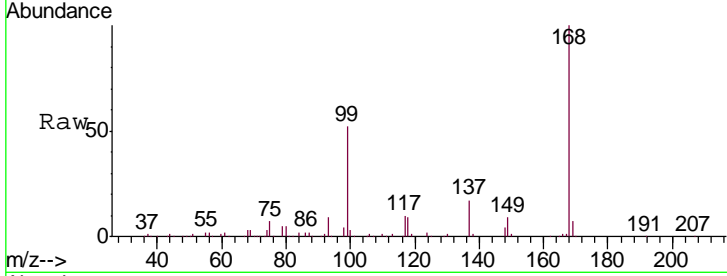




#38
 Carbon Tetrachloride
 Concen: 4.69 ug/l
 RT: 7.67 min Scan# 1891
 Delta R.T. -0.11 min
 Lab File: VN050143.D
 Acq: 27 Jul 2018 20:47

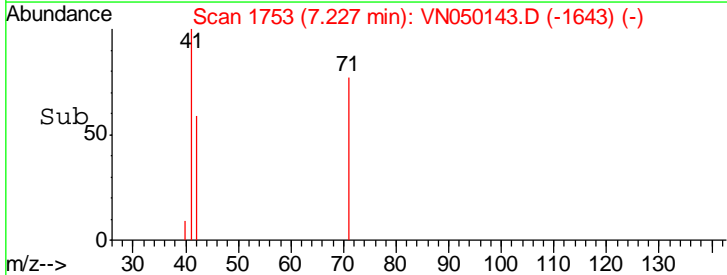
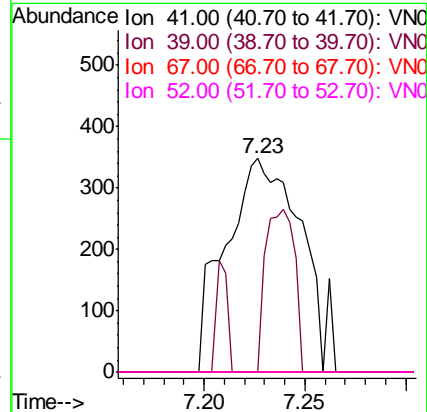
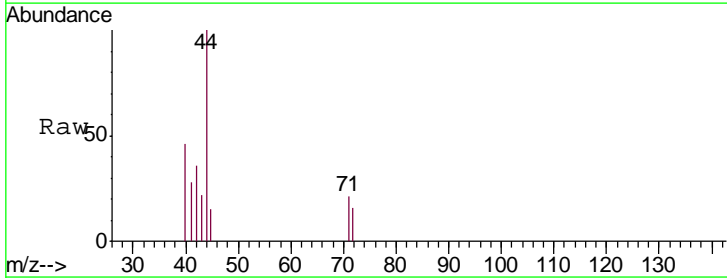
Instrument :
 MSVOA_N
 ClientSampled :
 PB111513ZHE#03

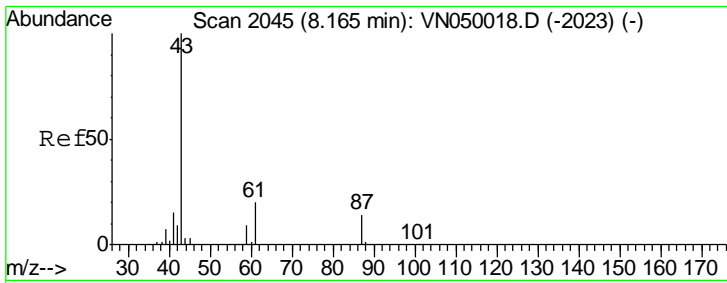
Tgt Ion	Resp	Lower	Upper
117	100		
119	6.3	77.4	116.0#
121	0.0	23.9	35.9#



#41
 Methacrylonitrile
 Concen: 2.93 ug/l
 RT: 7.23 min Scan# 1753
 Delta R.T. 0.05 min
 Lab File: VN050143.D
 Acq: 27 Jul 2018 20:47

Tgt Ion	Resp	Lower	Upper
41	100		
39	29.5	55.8	83.6#
67	0.0	84.3	126.5#
52	0.0	34.2	51.2#

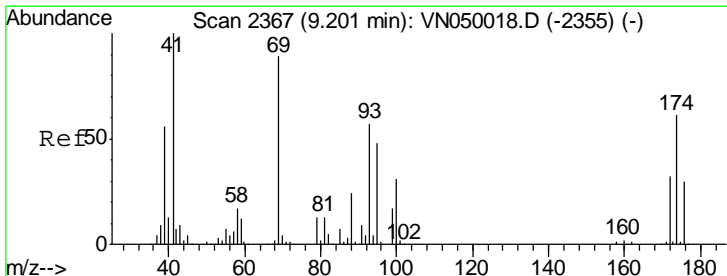
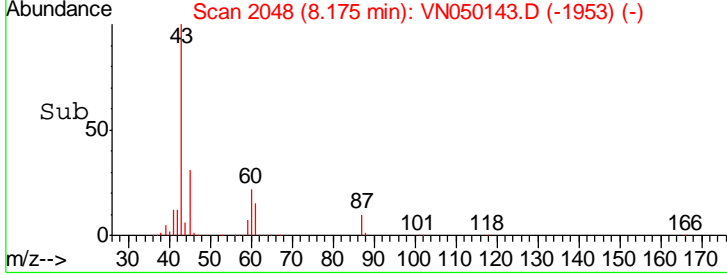
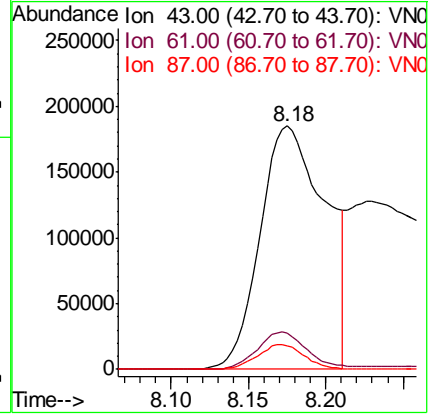
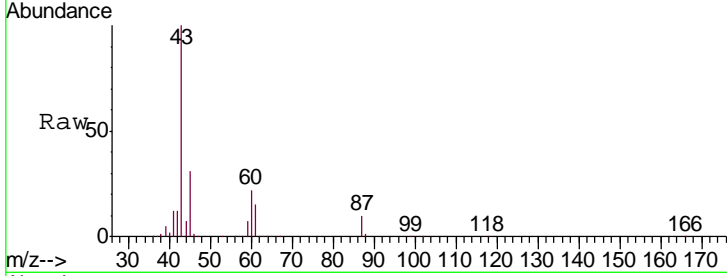




#43
 Isopropyl Acetate
 Concen: 31.04 ug/l
 RT: 8.18 min Scan# 2048
 Delta R.T. 0.01 min
 Lab File: VN050143.D
 Acq: 27 Jul 2018 20:47

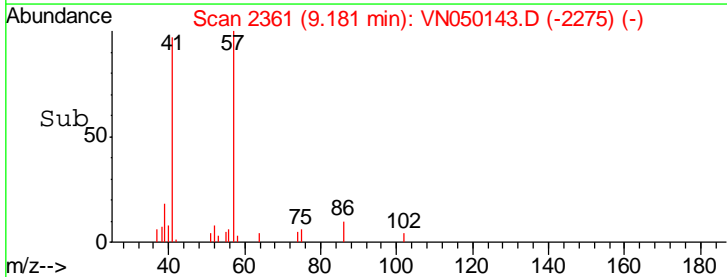
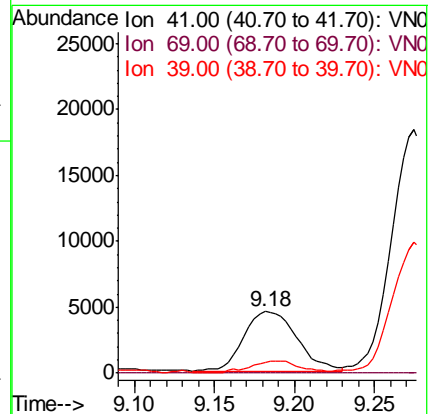
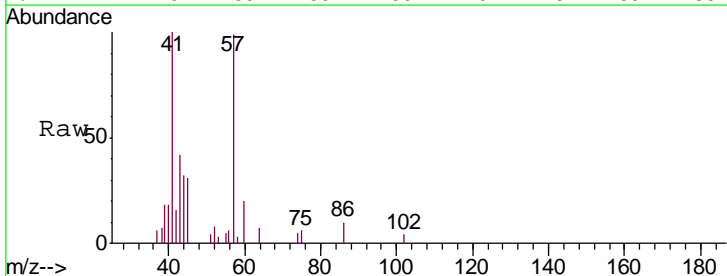
Instrument : MSVOA_N
 ClientSampleID : PB111513ZHE#03

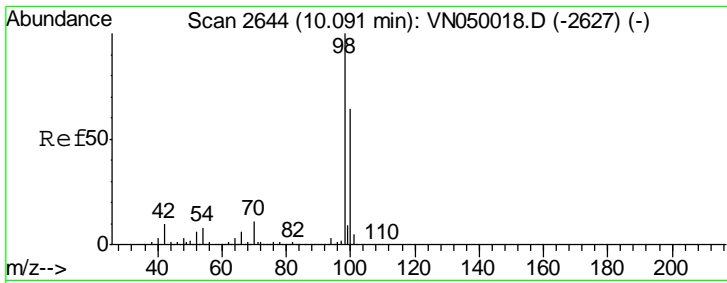
Tgt Ion	Resp	Lower	Upper
43	100		
61	12.7	15.8	23.6#
87	7.4	10.3	15.5#



#48
 Methyl methacrylate
 Concen: 1.31 ug/l
 RT: 9.18 min Scan# 2361
 Delta R.T. -0.02 min
 Lab File: VN050143.D
 Acq: 27 Jul 2018 20:47

Tgt Ion	Resp	Lower	Upper
41	100		
69	0.0	70.6	105.8#
39	19.1	43.9	65.9#

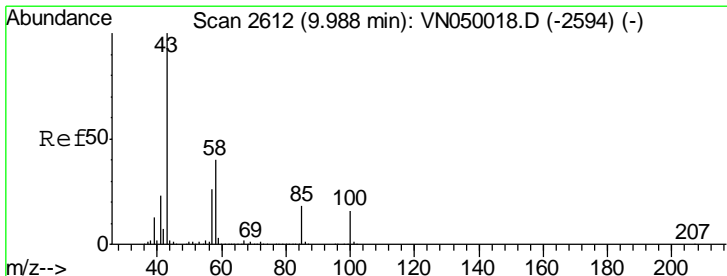
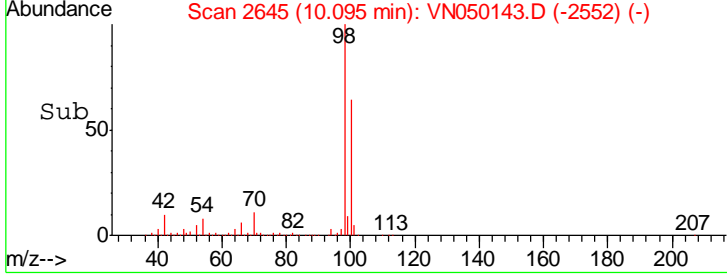
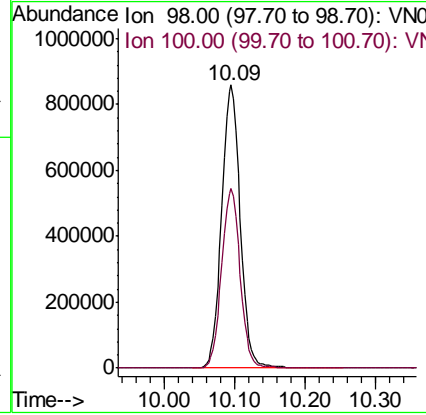
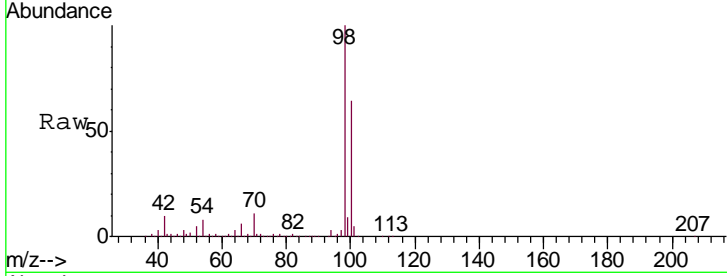




#50
 Toluene-d8
 Concen: 45.04 ug/l
 RT: 10.09 min Scan# 2645
 Delta R.T. 0.00 min
 Lab File: VN050143.D
 Acq: 27 Jul 2018 20:47

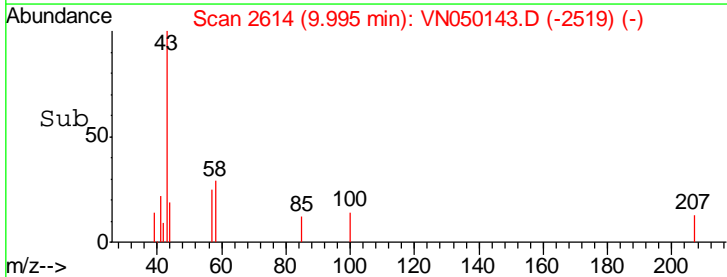
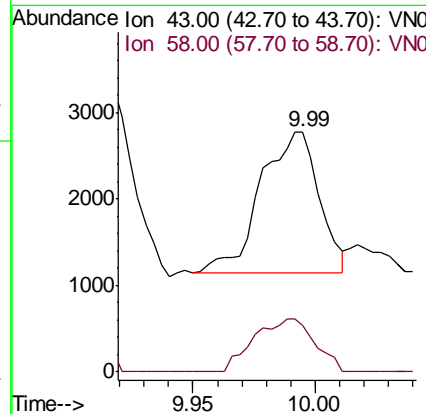
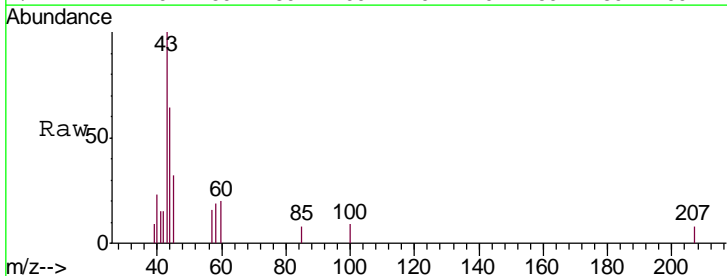
Instrument : MSVOA_N
 ClientSampled : PB111513ZHE#03

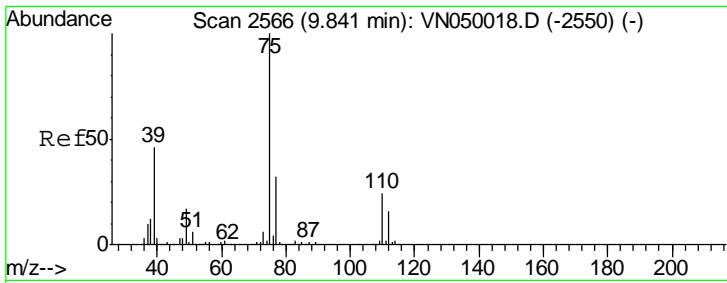
Tgt Ion: 98 Resp: 1574465
 Ion Ratio Lower Upper
 98 100
 100 63.5 50.7 76.1



#51
 4-Methyl-2-Pentanone
 Concen: 0.30 ug/l
 RT: 9.99 min Scan# 2614
 Delta R.T. 0.01 min
 Lab File: VN050143.D
 Acq: 27 Jul 2018 20:47

Tgt Ion: 43 Resp: 2729
 Ion Ratio Lower Upper
 43 100
 58 38.7 31.9 47.9



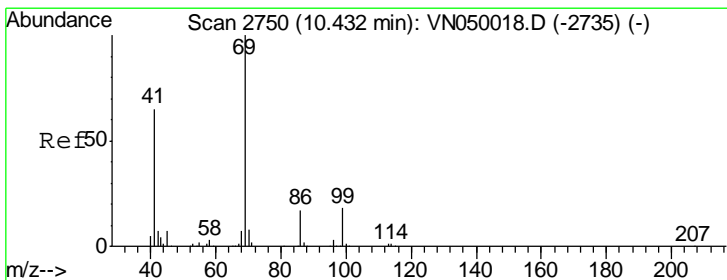
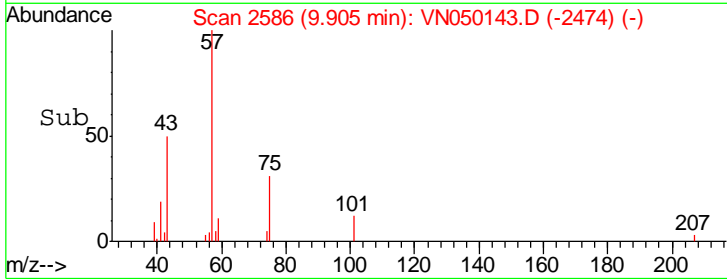
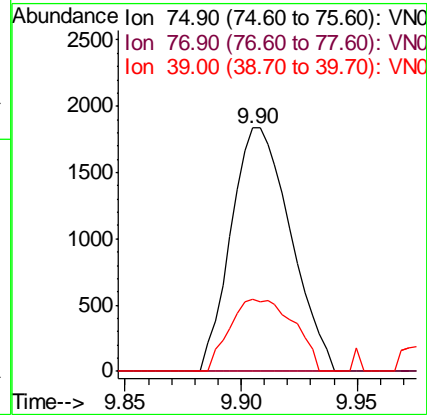
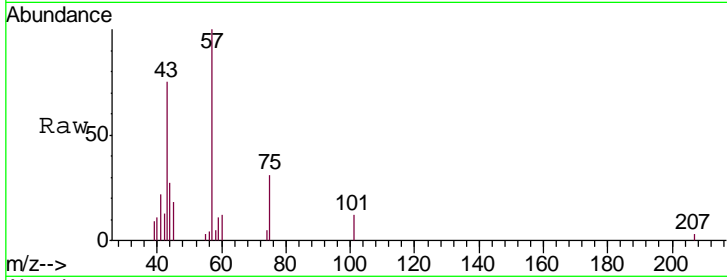


#54
 cis-1,3-Dichloropropene
 Concen: 0.22 ug/l
 RT: 9.90 min Scan# 2586
 Delta R.T. 0.06 min
 Lab File: VN050143.D
 Acq: 27 Jul 2018 20:47

Instrument :
 MSVOA_N
 ClientSampleId :
 PB111513ZHE#03

Tgt Ion: 75 Resp: 3271

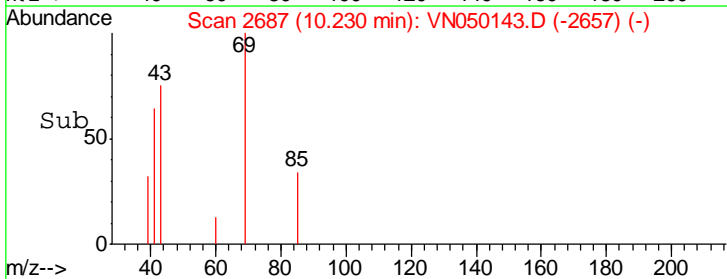
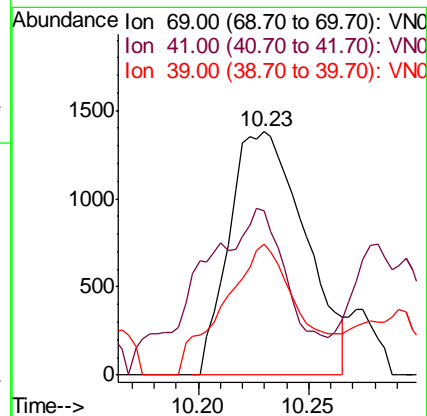
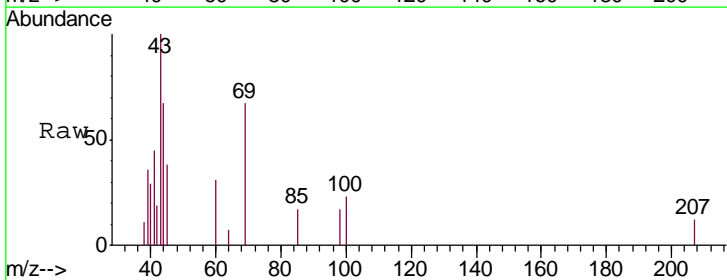
Ion	Ratio	Lower	Upper
75	100		
77	0.0	25.5	38.3#
39	29.5	36.6	55.0#

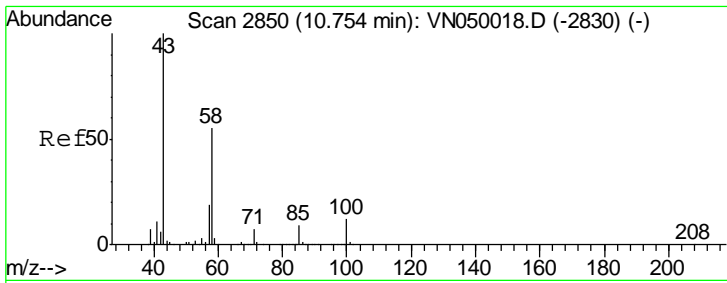


#56
 Ethyl methacrylate
 Concen: 2.28 ug/l
 RT: 10.23 min Scan# 2687
 Delta R.T. -0.20 min
 Lab File: VN050143.D
 Acq: 27 Jul 2018 20:47

Tgt Ion: 69 Resp: 3282

Ion	Ratio	Lower	Upper
69	100		
41	82.7	51.0	76.4#
39	51.9	26.6	40.0#

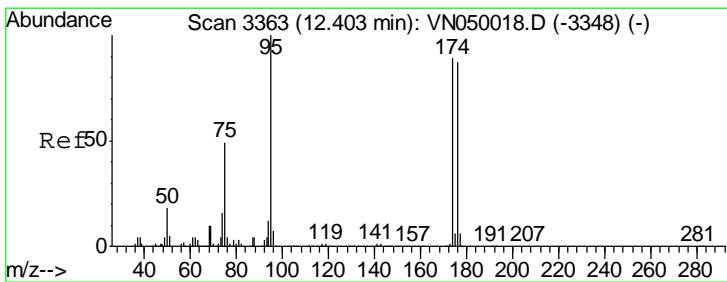
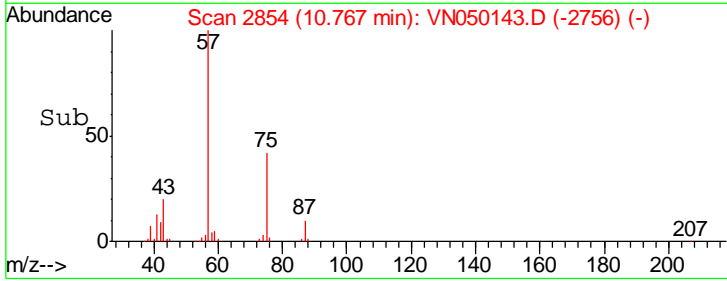
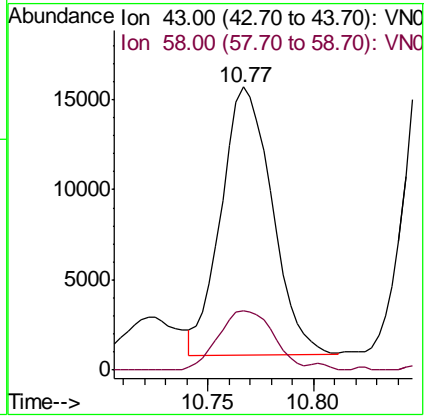
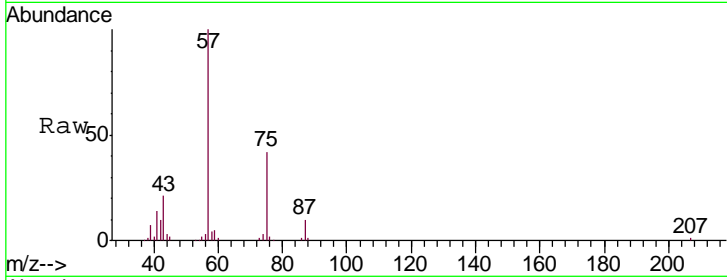




#59
 2-Hexanone
 Concen: 8.85 ug/l
 RT: 10.77 min Scan# 2854
 Delta R.T. 0.01 min
 Lab File: VN050143.D
 Acq: 27 Jul 2018 20:47

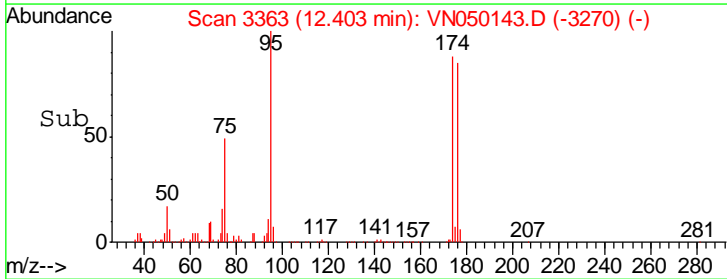
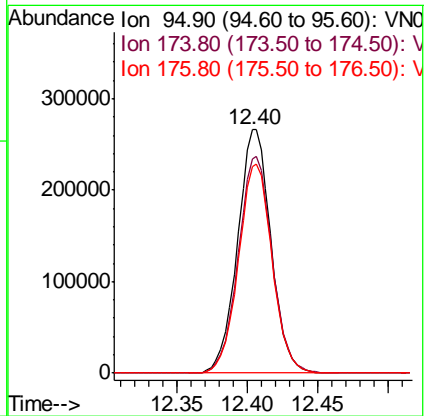
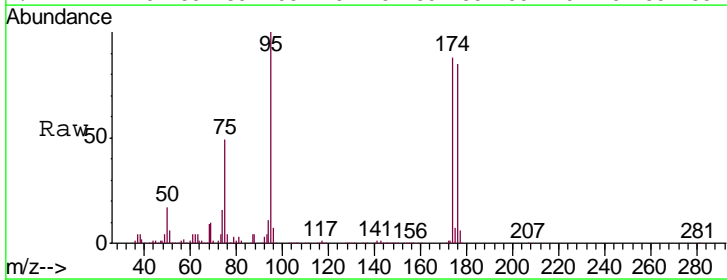
Instrument : MSVOA_N
 ClientSampled : PB111513ZHE#03

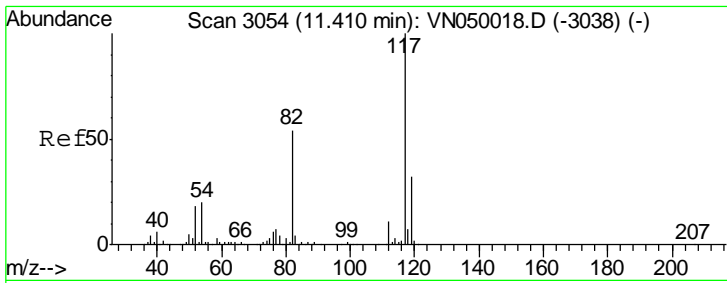
Tgt Ion	Resp	Lower	Upper
43	100		
58	25.1	27.6	82.7#



#62
 4-Bromofluorobenzene
 Concen: 38.32 ug/l
 RT: 12.40 min Scan# 3363
 Delta R.T. 0.00 min
 Lab File: VN050143.D
 Acq: 27 Jul 2018 20:47

Tgt Ion	Resp	Lower	Upper
95	100		
174	90.1	0.0	178.2
176	86.5	0.0	173.4

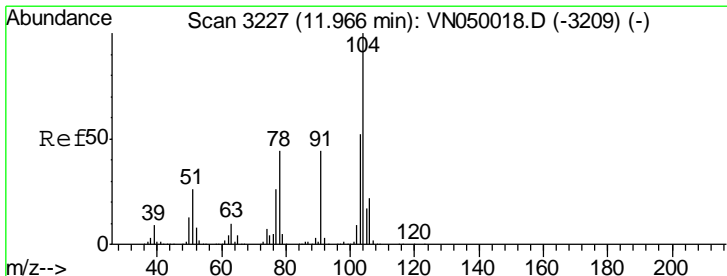
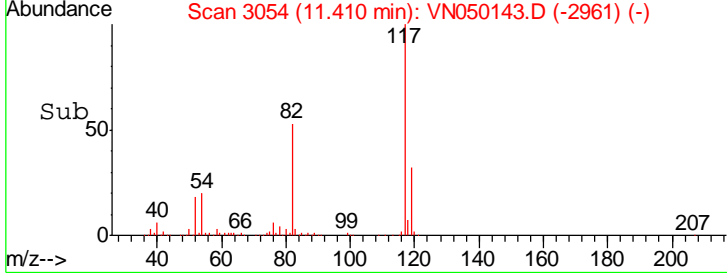
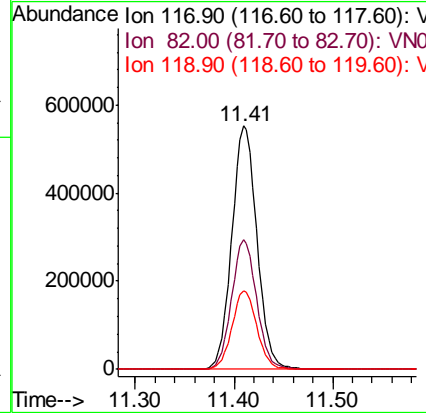
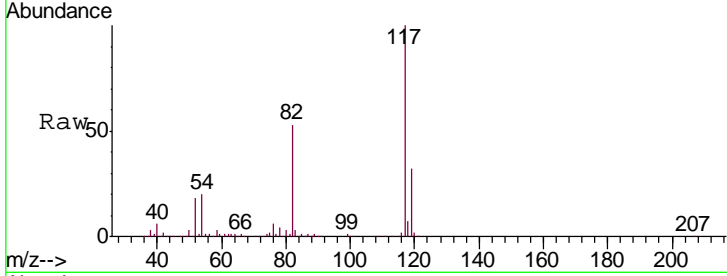




#63
 Chlorobenzene-d5
 Concen: 50.00 ug/l
 RT: 11.41 min Scan# 3054
 Delta R.T. 0.00 min
 Lab File: VN050143.D
 Acq: 27 Jul 2018 20:47

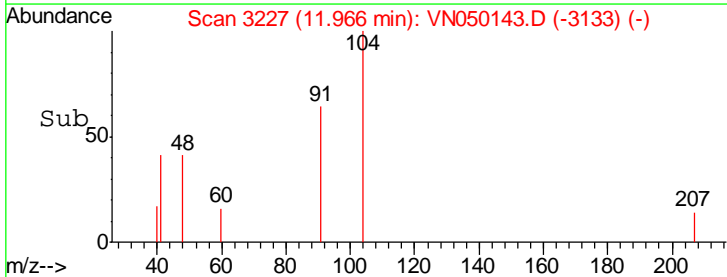
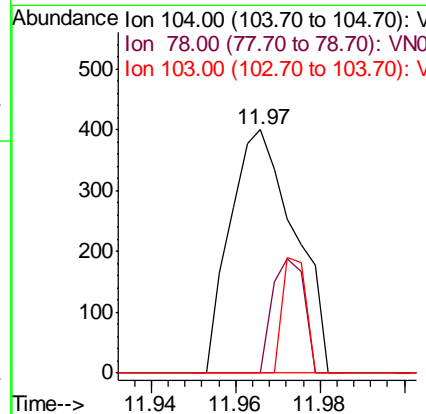
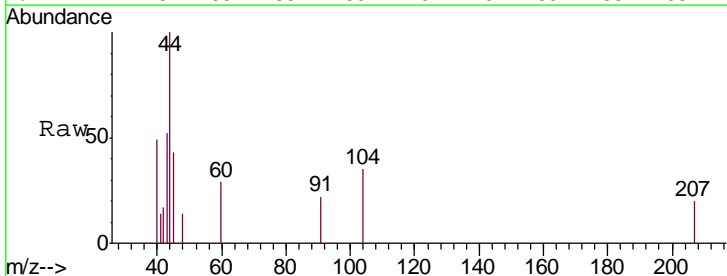
Instrument : MSVOA_N
 ClientSampled : PB111513ZHE#03

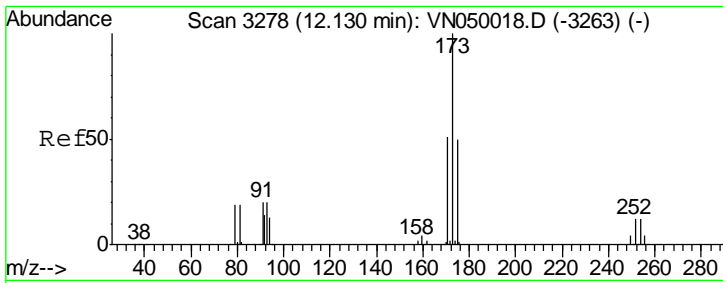
Tgt Ion	Resp	Lower	Upper
117	984133		
82	53.4	43.7	65.5
119	32.1	26.1	39.1



#70
 Styrene
 Concen: 0.94 ug/l
 RT: 11.97 min Scan# 3227
 Delta R.T. 0.00 min
 Lab File: VN050143.D
 Acq: 27 Jul 2018 20:47

Tgt Ion	Resp	Lower	Upper
104	423		
78	22.9	39.3	58.9#
103	17.0	45.0	67.6#

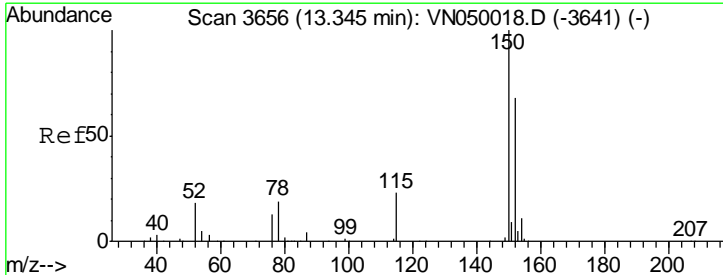
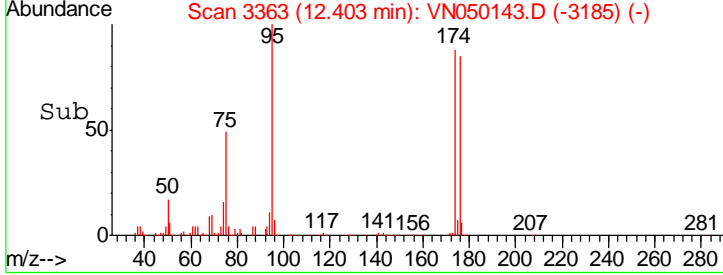
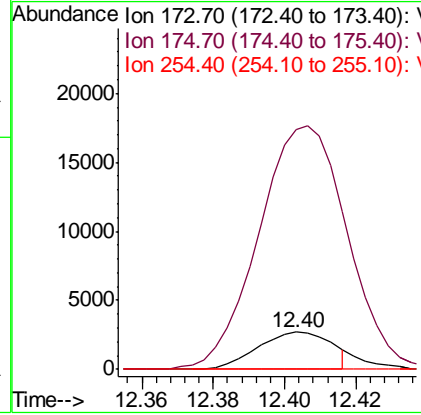
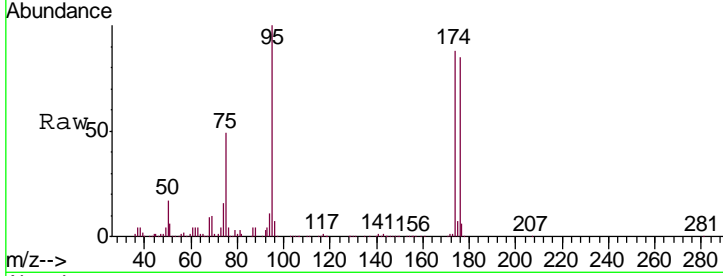




#71
 Bromoform
 Concen: 0.56 ug/l
 RT: 12.40 min Scan# 3363
 Delta R.T. 0.27 min
 Lab File: VN050143.D
 Acq: 27 Jul 2018 20:47

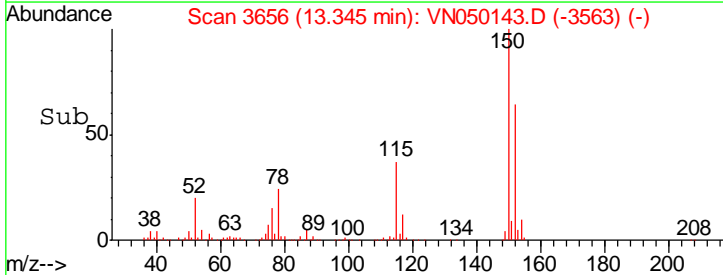
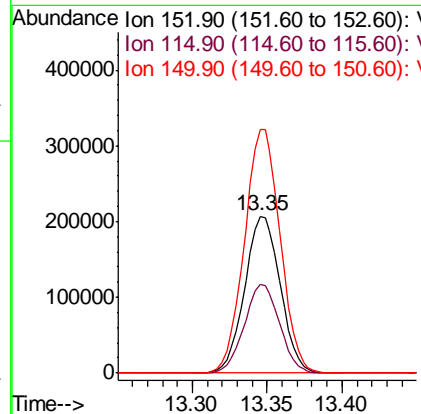
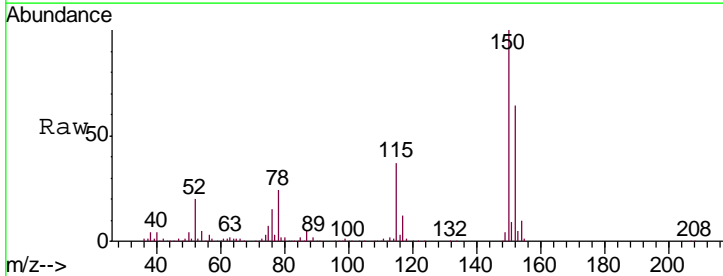
Instrument : MSVOA_N
 ClientSampleId : PB111513ZHE#03

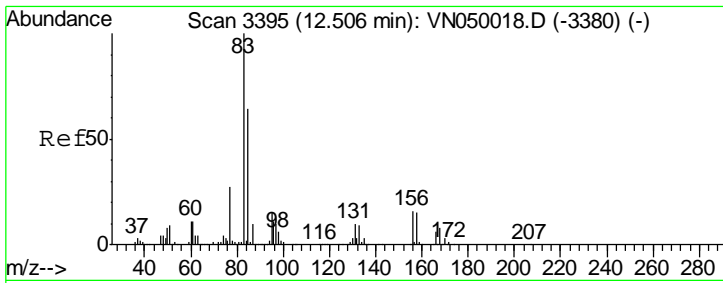
Tgt Ion	Resp	Lower	Upper
173	3868		
175	684.4	24.1	72.2#
254	0.0	0.2	0.2#



#72
 1,4-Dichlorobenzene-d4
 Concen: 50.00 ug/l
 RT: 13.35 min Scan# 3656
 Delta R.T. 0.00 min
 Lab File: VN050143.D
 Acq: 27 Jul 2018 20:47

Tgt Ion	Resp	Lower	Upper
152	342208		
152	100		
115	56.3	27.8	83.3
150	156.1	0.0	348.6

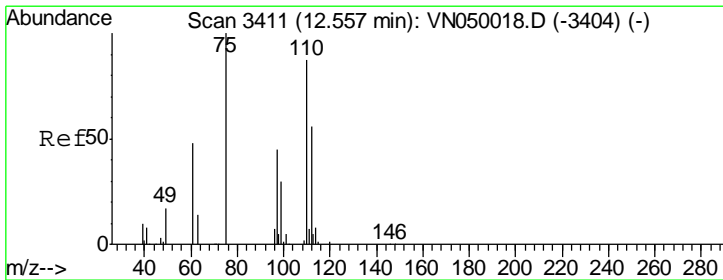
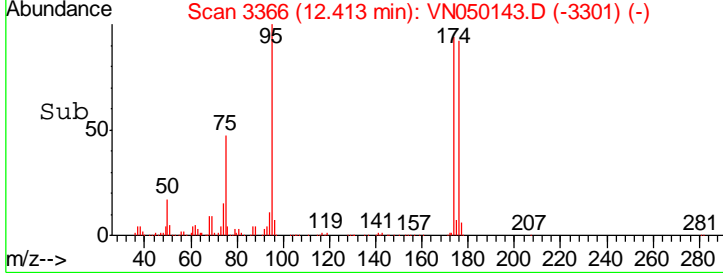
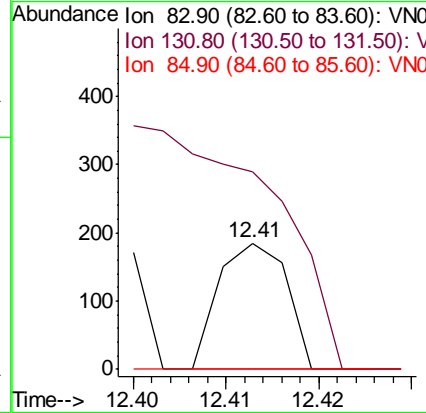
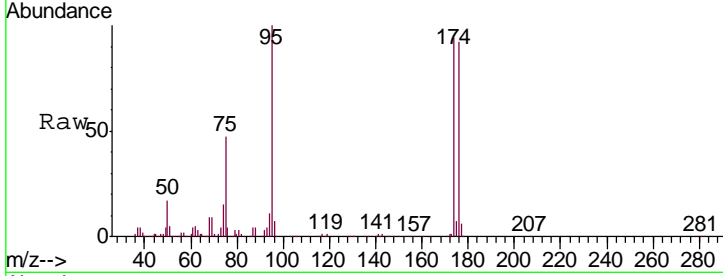




#75
 1,1,2,2-Tetrachloroethane
 Concen: Below Cal
 RT: 12.41 min Scan# 3366
 Delta R.T. -0.09 min
 Lab File: VN050143.D
 Acq: 27 Jul 2018 20:47

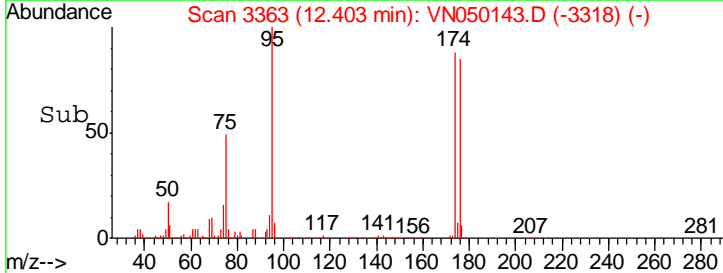
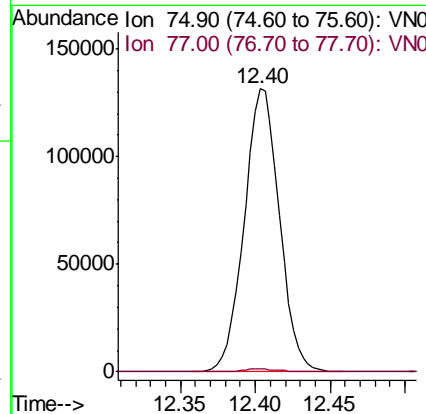
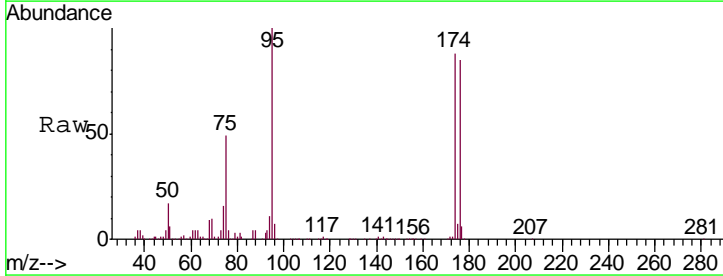
Instrument : MSVOA_N
 ClientSampleID : PB111513ZHE#03

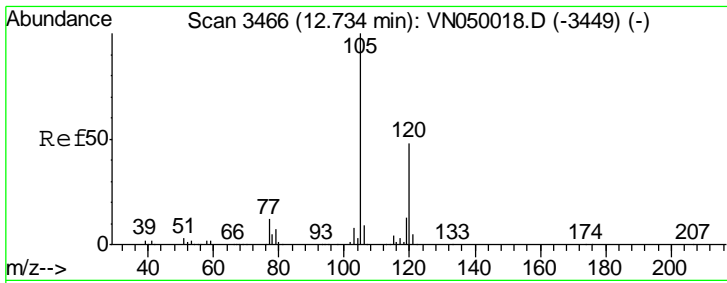
Tgt Ion	Resp	Lower	Upper
83	100		
131	0.0	5.1	15.3#
85	0.0	32.3	96.8#



#76
 1,2,3-Trichloropropane
 Concen: 33.88 ug/l
 RT: 12.40 min Scan# 3363
 Delta R.T. -0.15 min
 Lab File: VN050143.D
 Acq: 27 Jul 2018 20:47

Tgt Ion	Resp	Lower	Upper
75	100		
77	1.1	0.0	0.0#

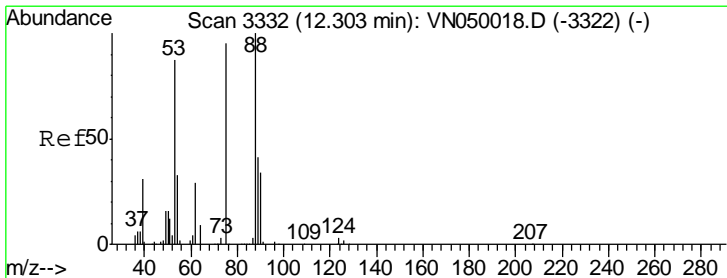
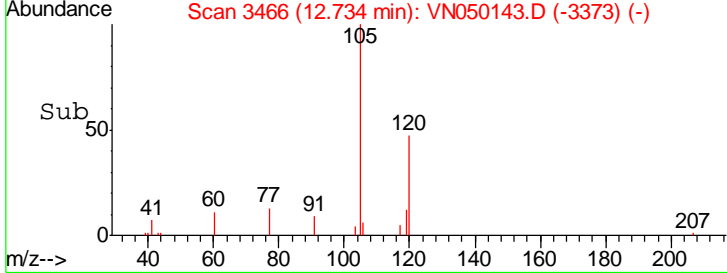
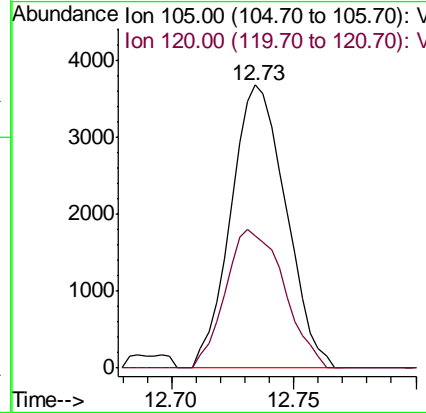
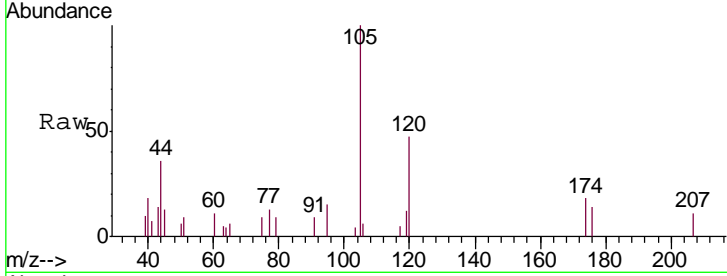




#80
 1,3,5-Trimethylbenzene
 Concen: 0.28 ug/l
 RT: 12.73 min Scan# 3466
 Delta R.T. 0.00 min
 Lab File: VN050143.D
 Acq: 27 Jul 2018 20:47

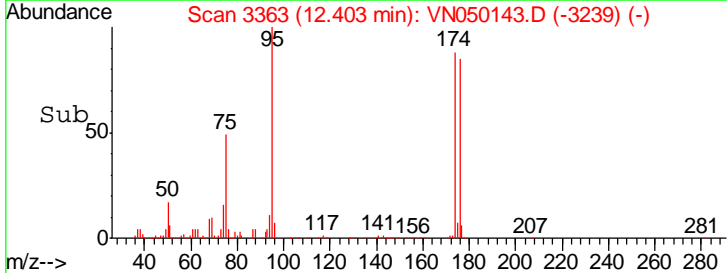
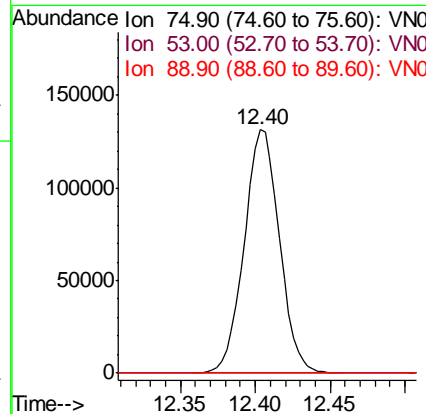
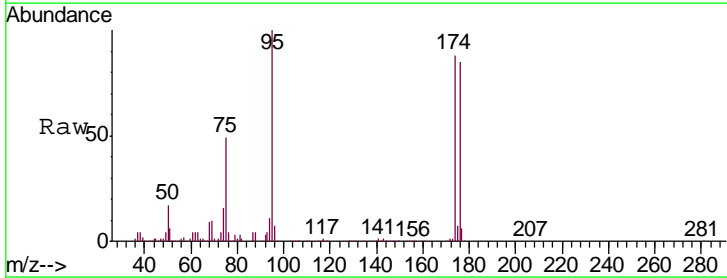
Instrument : MSVOA_N
 ClientSampled : PB111513ZHE#03

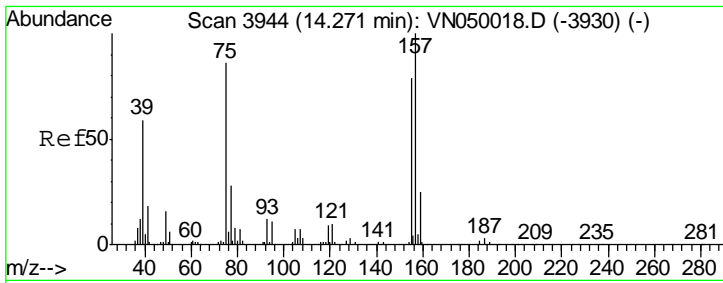
Tgt Ion	Resp	Lower	Upper
105	5757		
120	52.0	24.4	73.2



#81
 trans-1,4-Dichloro-2-butene
 Concen: 107.45 ug/l
 RT: 12.40 min Scan# 3363
 Delta R.T. 0.10 min
 Lab File: VN050143.D
 Acq: 27 Jul 2018 20:47

Tgt Ion	Resp	Lower	Upper
75	215453		
53	0.1	73.5	110.3#
89	0.0	36.0	54.0#

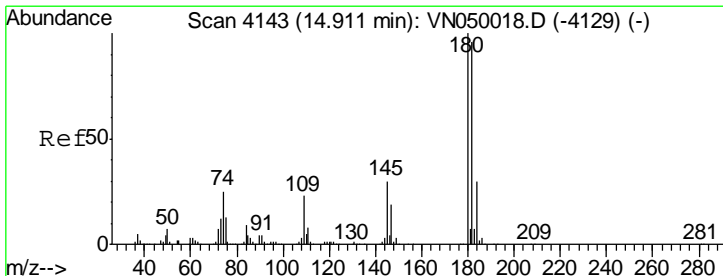
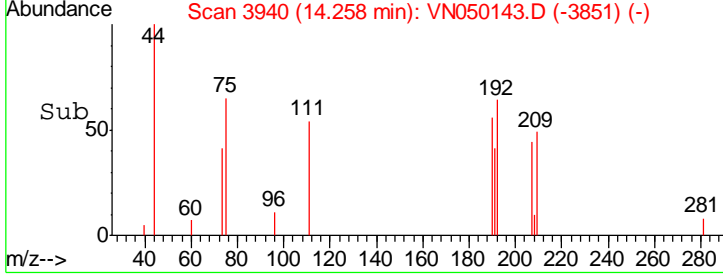
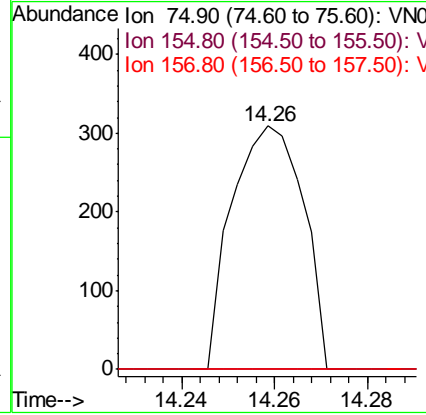
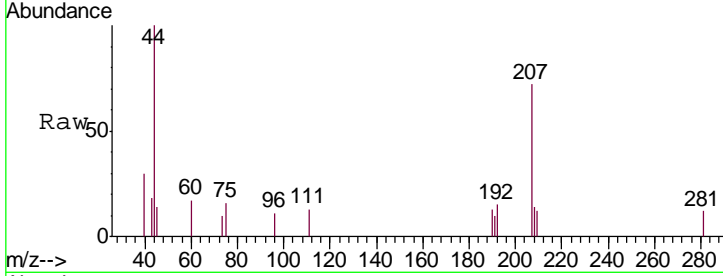




#92
 1,2-Dibromo-3-Chloropropane
 Concen: Below Cal
 RT: 14.26 min Scan# 3940
 Delta R.T. -0.01 min
 Lab File: VN050143.D
 Acq: 27 Jul 2018 20:47

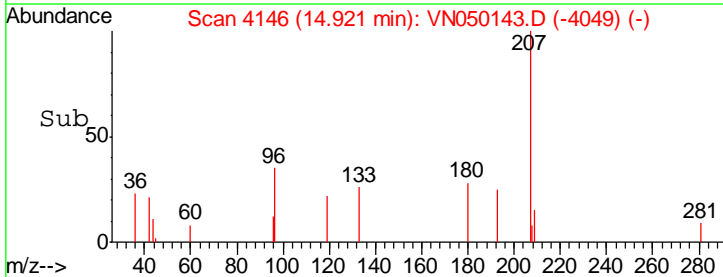
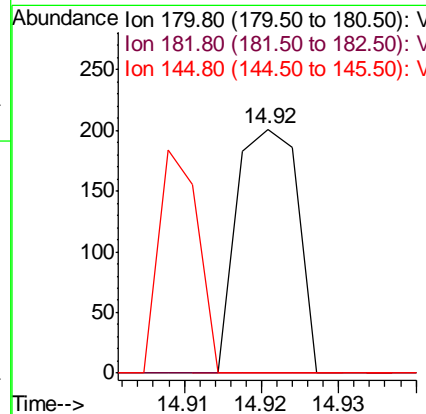
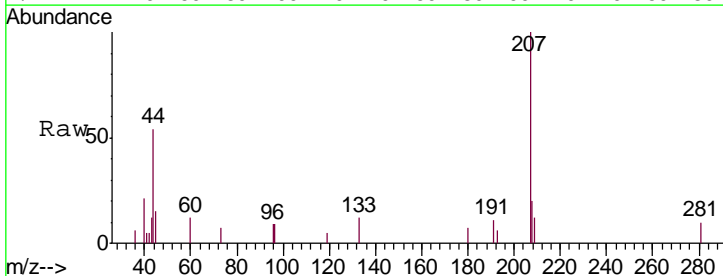
Instrument : MSVOA_N
 ClientSampleId : PB111513ZHE#03

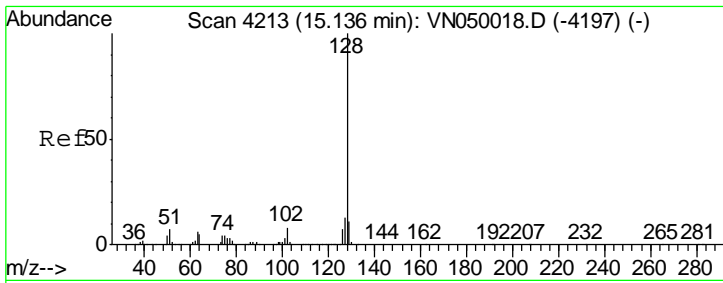
Tgt Ion	Resp	Lower	Upper
75	100		
155	0.0	44.8	134.4#
157	0.0	57.2	171.6#



#93
 1,2,4-Trichlorobenzene
 Concen: 3.10 ug/l
 RT: 14.92 min Scan# 4146
 Delta R.T. 0.01 min
 Lab File: VN050143.D
 Acq: 27 Jul 2018 20:47

Tgt Ion	Resp	Lower	Upper
180	100		
182	0.0	46.7	140.1#
145	59.1	13.8	41.4#





#95
 Naphthalene
 Concen: 4.77 ug/l
 RT: 15.14 min Scan# 4213
 Delta R.T. 0.00 min
 Lab File: VN050143.D
 Acq: 27 Jul 2018 20:47

Instrument : MSVOA_N
 ClientSampled : PB111513ZHE#03

Tot Ion	Ratio	Lower	Upper
128	100		
127	11.0	10.4	15.6
129	5.7	8.8	13.2#

