

Data Path : Z:\VOASRV\HPCHEM1\MSVOA N\DATA\VN072718\
 Data File : VN050138.D
 Acq On : 27 Jul 2018 18:43
 Operator : MD\SY
 Sample : J4184-01DL 20X
 Misc : 5.00mL/MSVOA N/WATER
 ALS Vial : 16 Sample Multiplier: 1

Instrument :
 MSVOA_N
 ClientSampled :
 MW-3BDL

Quant Time: Jul 28 00:29:07 2018
 Quant Method : Z:\VOASRV\HPCHEM1\MSVOA_N\METHODS\82N072418W.M
 Quant Title : SW846 8260
 QLast Update : Thu Jul 26 18:10:10 2018
 Response via : Initial Calibration

Internal Standards	R.T.	QIon	Response	Conc	Units	Dev(Min)
1) Pentafluorobenzene	7.67	168	806725	50.00	ug/l	0.00
34) 1,4-Difluorobenzene	8.59	114	1245181	50.00	ug/l	0.00
63) Chlorobenzene-d5	11.41	117	1051012	50.00	ug/l	0.00
72) 1,4-Dichlorobenzene-d4	13.35	152	455749	50.00	ug/l	0.00

System Monitoring Compounds	R.T.	QIon	Response	Conc	Units	Dev(Min)
33) 1,2-Dichloroethane-d4	8.03	65	523915	46.55	ug/l	0.00
Spiked Amount				50.000		
Recovery						93.10%
35) Dibromofluoromethane	7.59	113	459025	45.15	ug/l	0.00
Spiked Amount				50.000		
Recovery						90.30%
50) Toluene-d8	10.09	98	1707968	45.70	ug/l	0.00
Spiked Amount				50.000		
Recovery						91.40%
62) 4-Bromofluorobenzene	12.40	95	530861	43.13	ug/l	0.00
Spiked Amount				50.000		
Recovery						86.26%

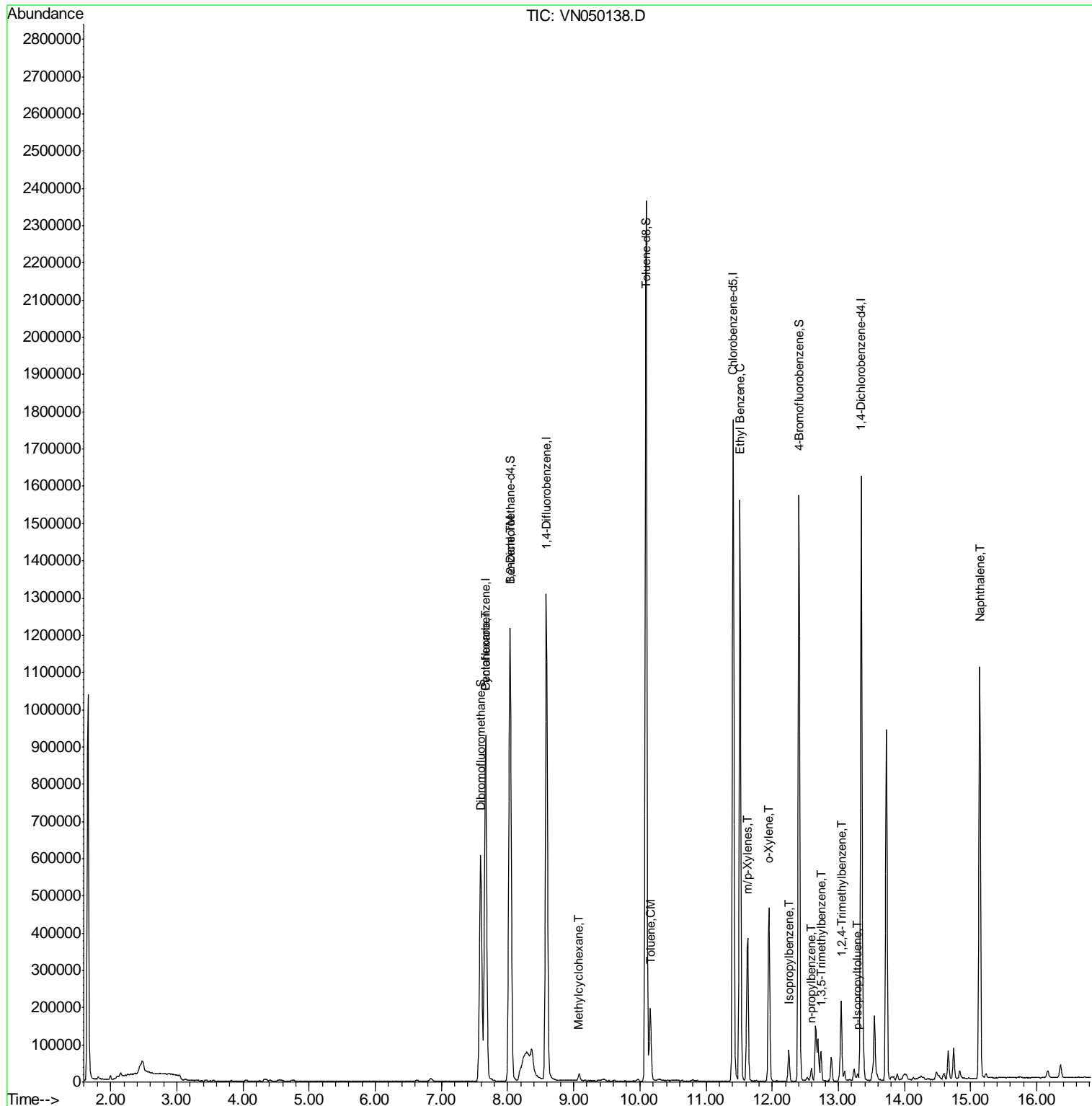
Target Compounds	R.T.	QIon	Response	Conc	Units	Qvalue
31) Cyclohexane	7.67	56	19706	1.204	ug/l #	1
39) Methylcyclohexane	9.08	83	7198	0.499	ug/l	99
40) Benzene	8.05	78	821002	19.232	ug/l	99
52) Toluene	10.16	92	80117	3.179	ug/l	100
67) Ethyl Benzene	11.51	91	1143413	26.811	ug/l	100
68) m/p-Xylenes	11.63	106	123154	7.635	ug/l	99
69) o-Xylene	11.95	106	131261	8.536	ug/l	97
73) Isopropylbenzene	12.25	105	55222	1.562	ug/l	98
78) n-propylbenzene	12.60	91	24619	0.623	ug/l	96
80) 1,3,5-Trimethylbenzene	12.74	105	42316	1.522	ug/l	97
84) 1,2,4-Trimethylbenzene	13.04	105	120818	4.311	ug/l	100
86) p-Isopropyltoluene	13.29	119	9263	0.339	ug/l	94
95) Naphthalene	15.14	128	971925	46.988	ug/l	99

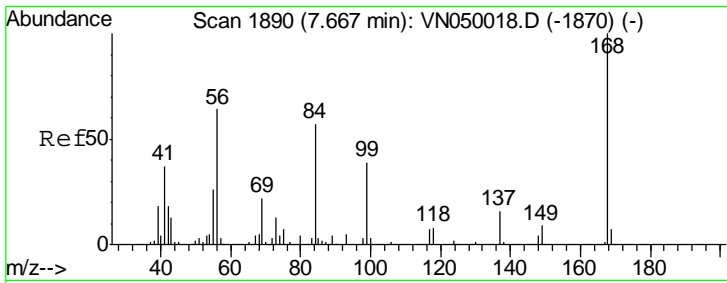
(#) = qualifier out of range (m) = manual integration (+) = signals summed

Data Path : Z:\VOASRV\HPCHEM1\MSVOA N\DATA\VN072718\
 Data File : VN050138.D
 Acq On : 27 Jul 2018 18:43
 Operator : MD\SY
 Sample : J4184-01DL 20X
 Misc : 5.00mL/MSVOA N/WATER
 ALS Vial : 16 Sample Multiplier: 1

Instrument :
 MSVOA_N
 Client Sampled :
 MW-3BDL

Quant Time: Jul 28 00:29:07 2018
 Quant Method : Z:\VOASRV\HPCHEM1\MSVOA_N\METHODS\82N072418W.M
 Quant Title : SW846 8260
 QLast Update : Thu Jul 26 18:10:10 2018
 Response via : Initial Calibration

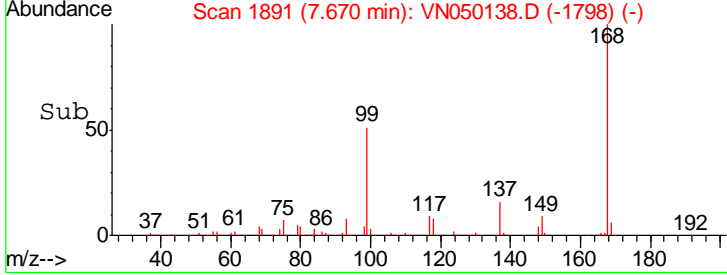
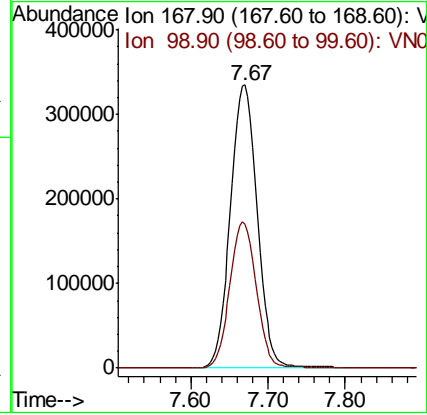
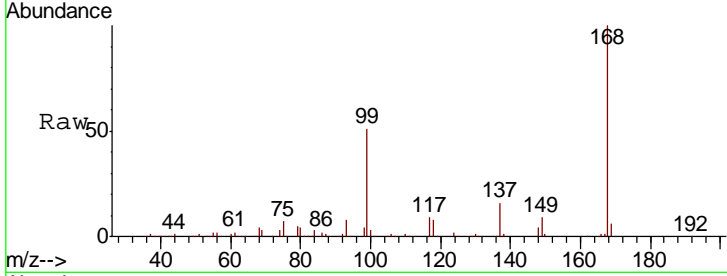




#1
 Pentafluorobenzene
 Concen: 50.000 ug/l
 RT: 7.67 min Scan# 1891
 Delta R.T. 0.00 min
 Lab File: VN050138.D
 Acq: 27 Jul 2018 18:43

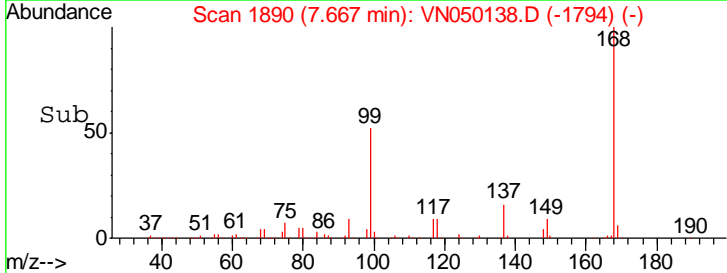
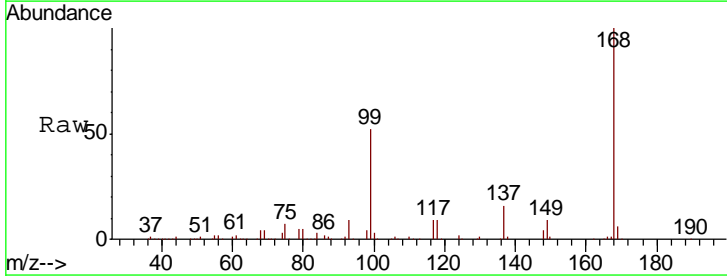
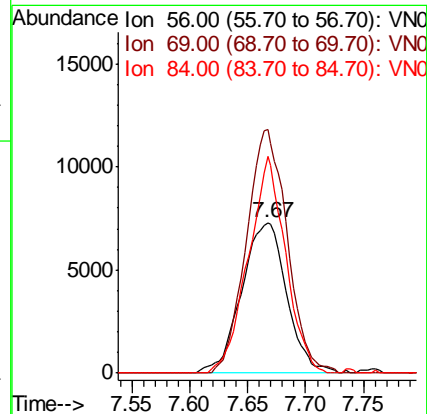
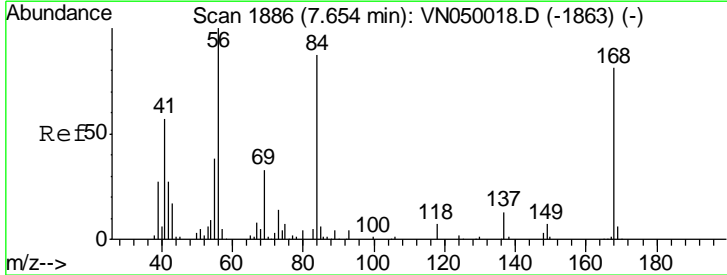
Instrument :
 MSVOA_N
 ClientSampled :
 MW-3BDL

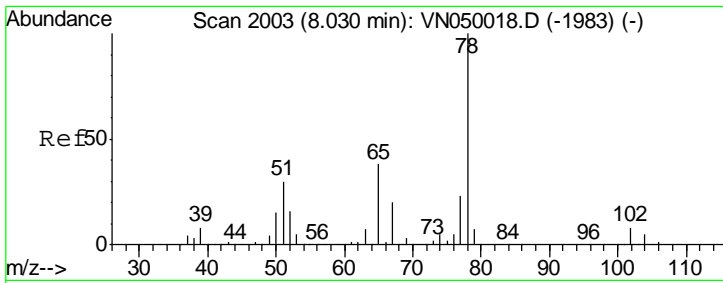
Tgt Ion	Resp	Lower	Upper
168	100		
99	50.7	40.0	60.0



#31
 Cyclohexane
 Concen: 1.204 ug/l
 RT: 7.67 min Scan# 1890
 Delta R.T. 0.01 min
 Lab File: VN050138.D
 Acq: 27 Jul 2018 18:43

Tgt Ion	Resp	Lower	Upper
56	100		
69	161.9	26.2	39.4#
84	143.8	67.4	101.0#

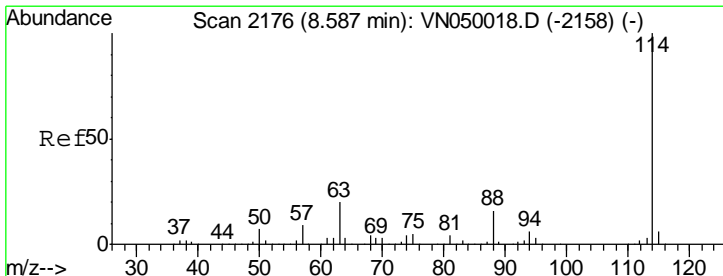
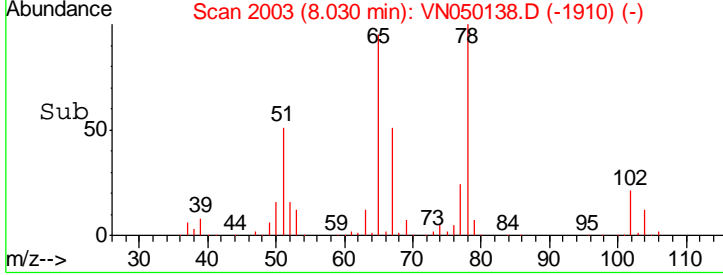
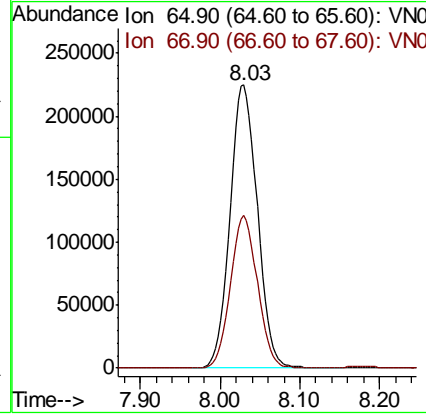
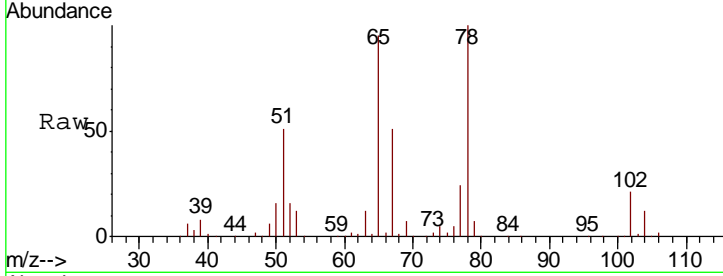




#33
 1,2-Dichloroethane-d4
 Concen: 46.547 ug/l
 RT: 8.03 min Scan# 2003
 Delta R.T. 0.00 min
 Lab File: VN050138.D
 Acq: 27 Jul 2018 18:43

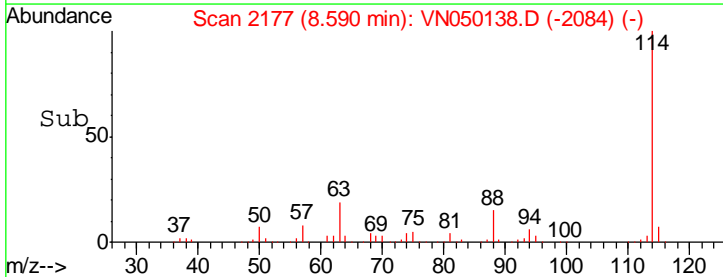
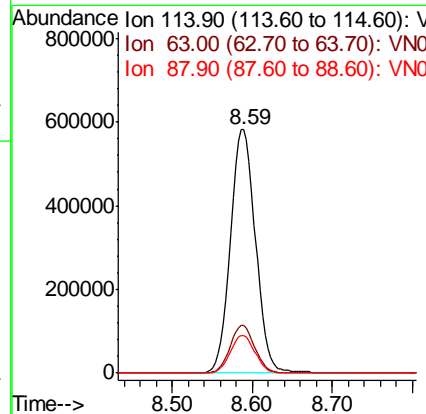
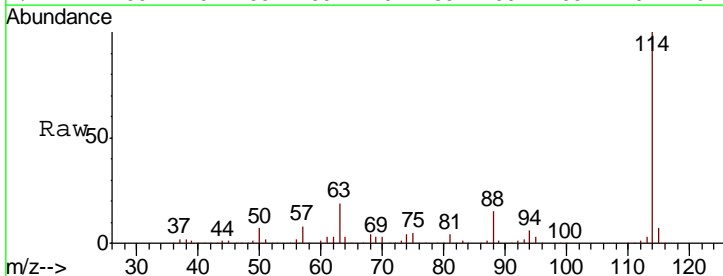
Instrument :
 MSVOA_N
 ClientSampled :
 MW-3BDL

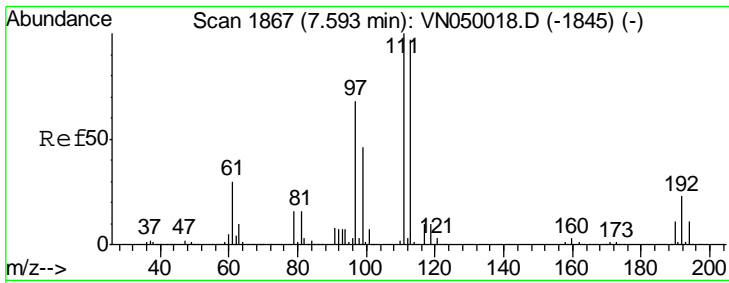
Tgt Ion	Resp	Lower	Upper
65	100		
67	53.2	0.0	108.4



#34
 1,4-Difluorobenzene
 Concen: 50.000 ug/l
 RT: 8.59 min Scan# 2177
 Delta R.T. 0.00 min
 Lab File: VN050138.D
 Acq: 27 Jul 2018 18:43

Tgt Ion	Resp	Lower	Upper
114	100		
63	19.5	0.0	40.0
88	15.3	0.0	31.2

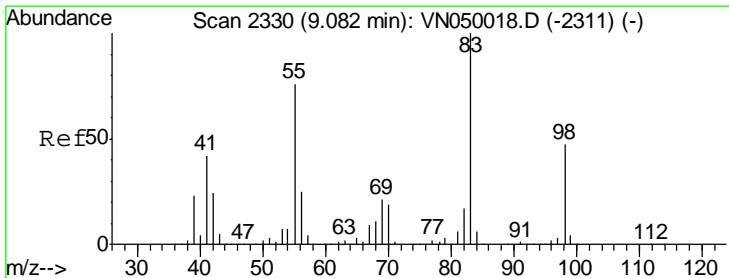
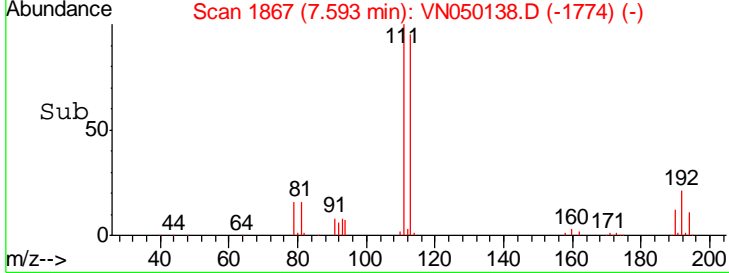
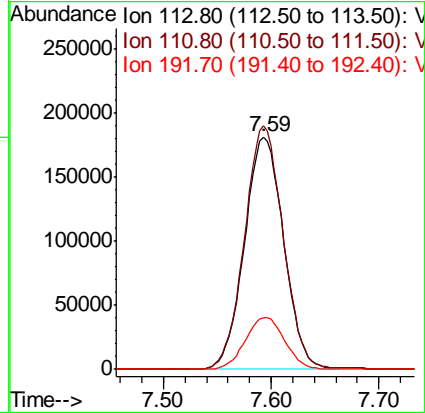
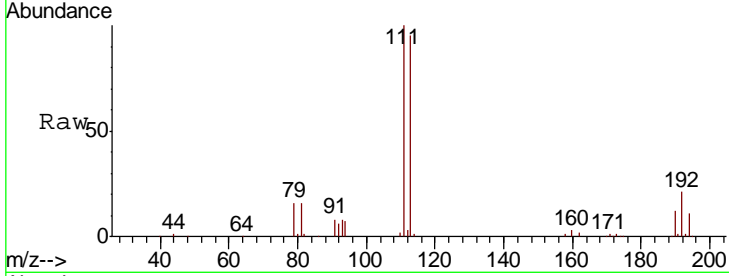




#35
 Dibromofluoromethane
 Concen: 45.150 ug/l
 RT: 7.59 min Scan# 1867
 Delta R.T. 0.00 min
 Lab File: VN050138.D
 Acq: 27 Jul 2018 18:43

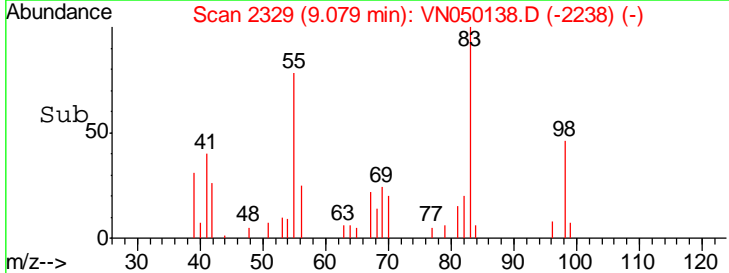
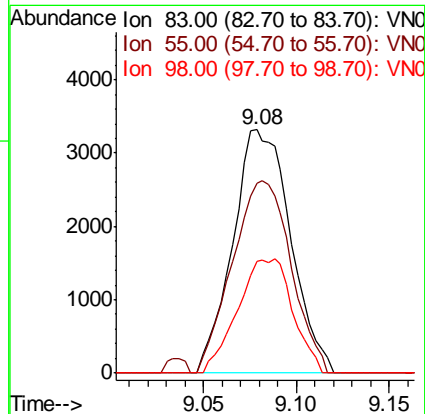
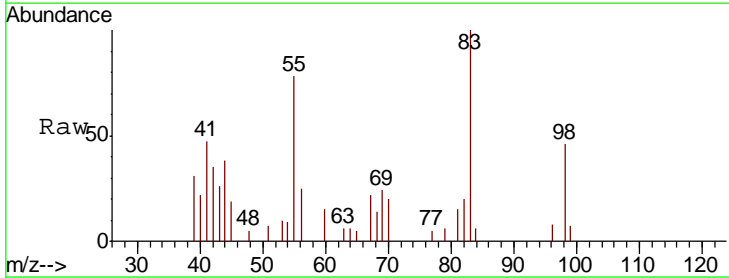
Instrument :
 MSVOA_N
 ClientSampled :
 MW-3BDL

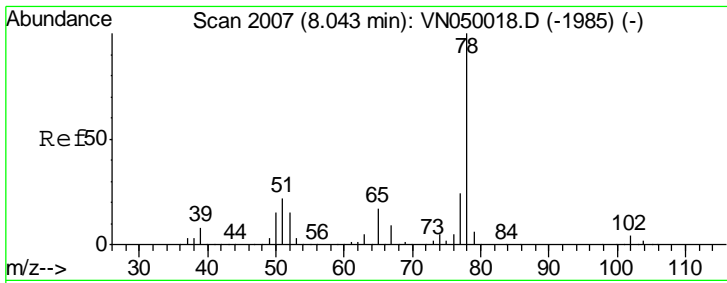
Tgt Ion	Resp	Lower	Upper
113	459025		
111	103.4	80.7	121.1
192	22.5	17.8	26.6



#39
 Methylcyclohexane
 Concen: 0.499 ug/l
 RT: 9.08 min Scan# 2329
 Delta R.T. -0.01 min
 Lab File: VN050138.D
 Acq: 27 Jul 2018 18:43

Tgt Ion	Resp	Lower	Upper
83	7198		
83	100		
55	78.0	61.8	92.8
98	46.1	36.5	54.7

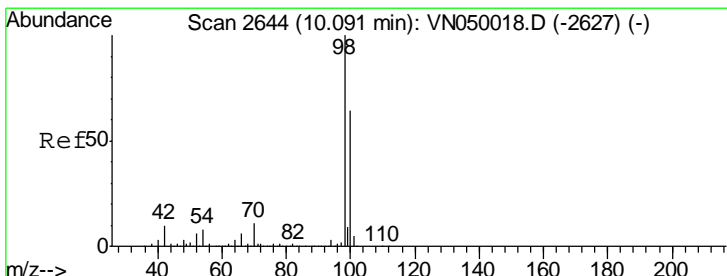
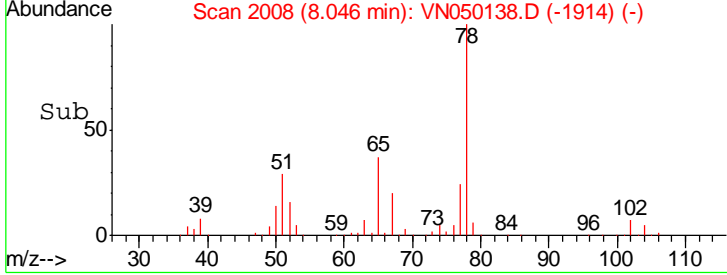
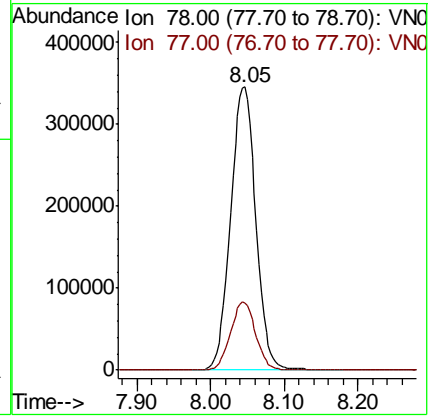
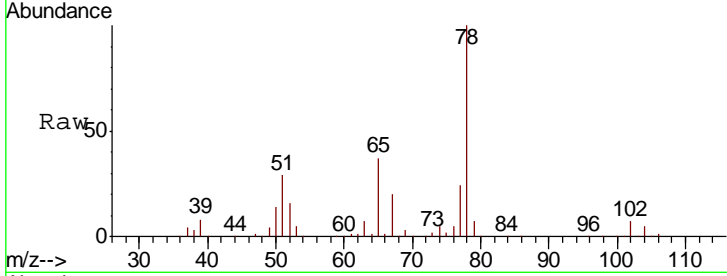




#40
Benzene
Concen: 19.232 ug/l
RT: 8.05 min Scan# 2008
Delta R.T. 0.00 min
Lab File: VN050138.D
Acq: 27 Jul 2018 18:43

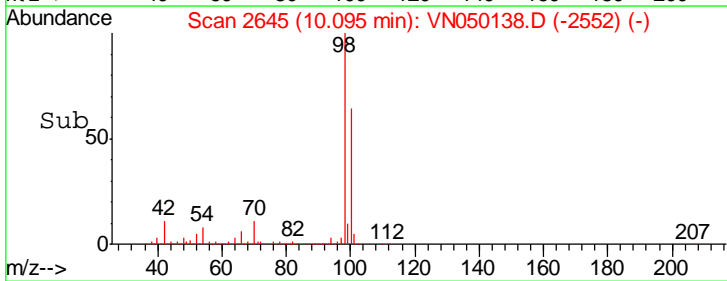
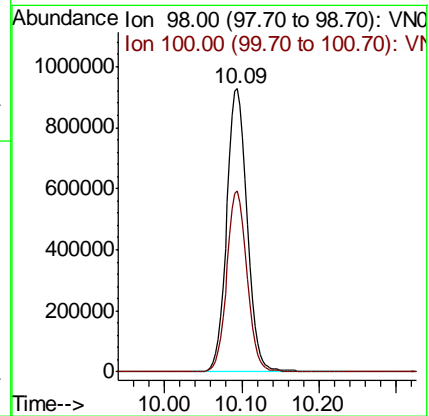
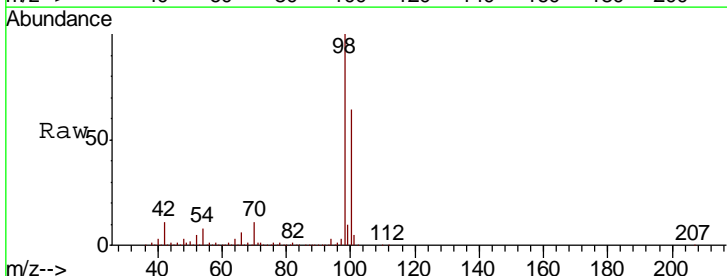
Instrument :
MSVOA_N
ClientSampled :
MW-3BDL

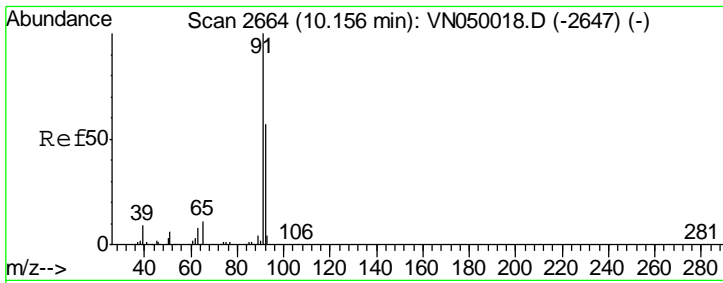
Tgt Ion: 78 Resp: 821002
Ion Ratio Lower Upper
78 100
77 23.9 18.7 28.1



#50
Toluene-d8
Concen: 45.696 ug/l
RT: 10.09 min Scan# 2645
Delta R.T. 0.00 min
Lab File: VN050138.D
Acq: 27 Jul 2018 18:43

Tgt Ion: 98 Resp: 1707968
Ion Ratio Lower Upper
98 100
100 63.3 50.7 76.1

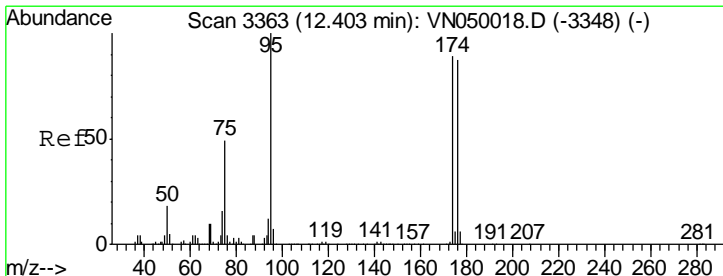
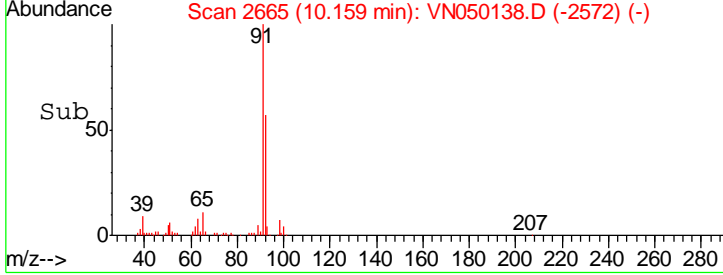
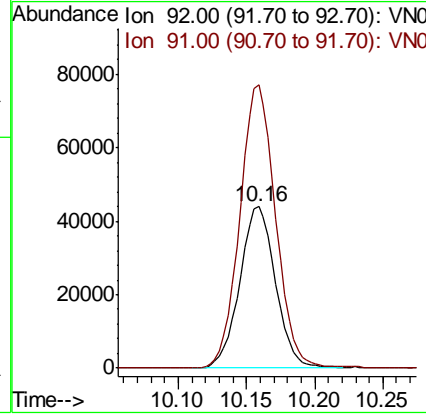
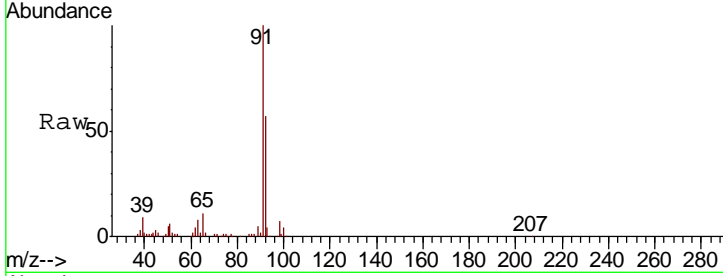




#52
 Toluene
 Concen: 3.179 ug/l
 RT: 10.16 min Scan# 2665
 Delta R.T. 0.00 min
 Lab File: VN050138.D
 Acq: 27 Jul 2018 18:43

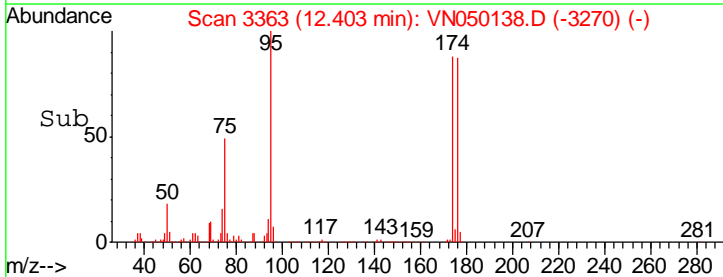
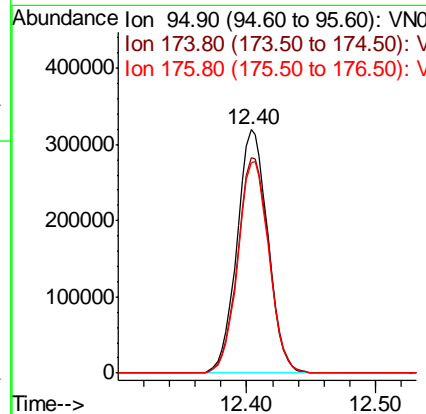
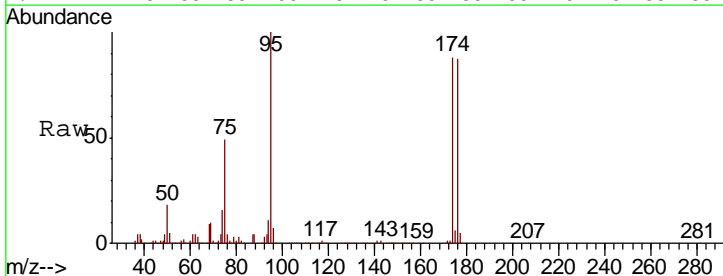
Instrument : MSVOA_N
 Client Sampled : MW-3BDL

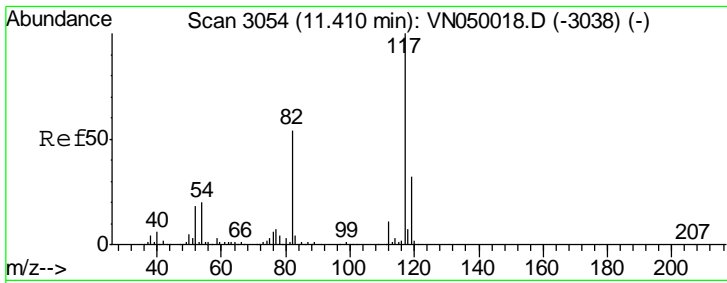
Tgt Ion	Resp	Lower	Upper
92	80117		
92	100		
91	175.4	140.3	210.5



#62
 4-Bromofluorobenzene
 Concen: 43.134 ug/l
 RT: 12.40 min Scan# 3363
 Delta R.T. 0.00 min
 Lab File: VN050138.D
 Acq: 27 Jul 2018 18:43

Tgt Ion	Resp	Lower	Upper
95	530861		
95	100		
174	90.3	0.0	178.2
176	87.4	0.0	173.4



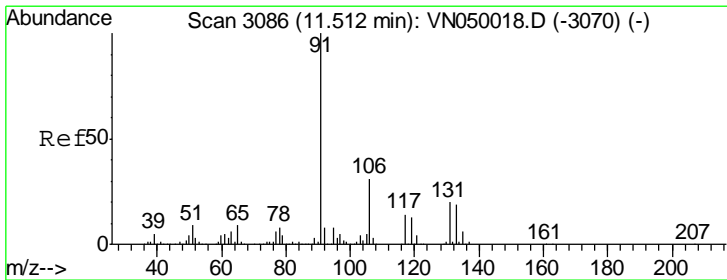
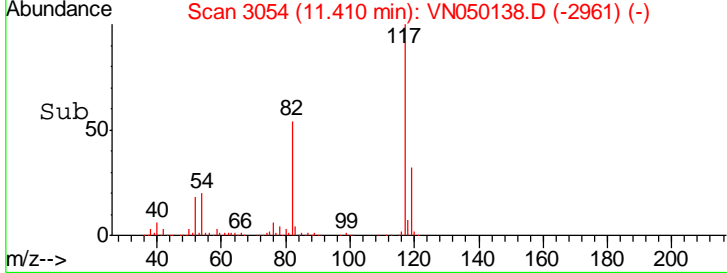
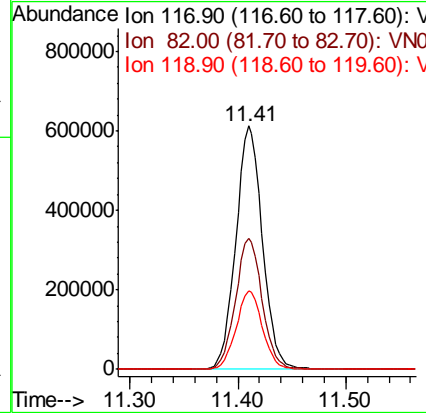
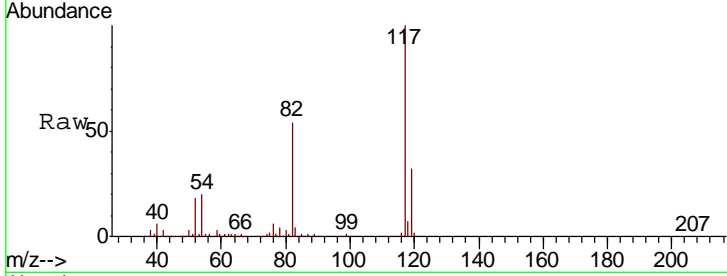


#63
 Chlorobenzene-d5
 Concen: 50.000 ug/l
 RT: 11.41 min Scan# 3054
 Delta R.T. 0.00 min
 Lab File: VN050138.D
 Acq: 27 Jul 2018 18:43

Instrument :
 MSVOA_N
 ClientSampled :
 MW-3BDL

Tgt Ion: 117 Resp: 1051012

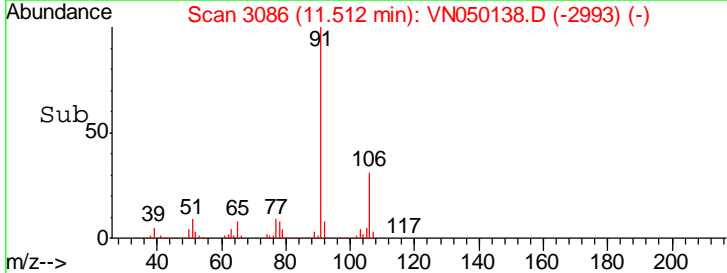
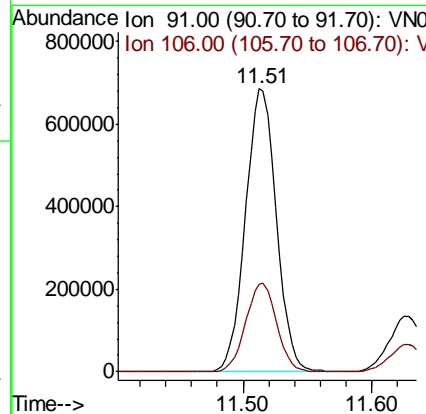
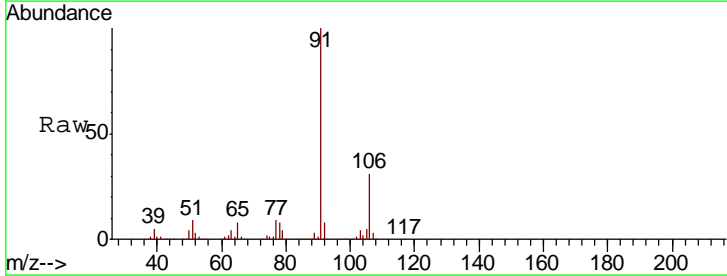
Ion	Ratio	Lower	Upper
117	100		
82	54.1	43.7	65.5
119	32.5	26.1	39.1

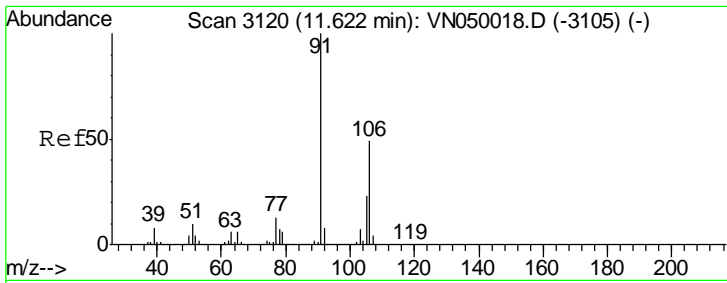


#67
 Ethyl Benzene
 Concen: 26.811 ug/l
 RT: 11.51 min Scan# 3086
 Delta R.T. 0.00 min
 Lab File: VN050138.D
 Acq: 27 Jul 2018 18:43

Tgt Ion: 91 Resp: 1143413

Ion	Ratio	Lower	Upper
91	100		
106	31.0	25.0	37.4

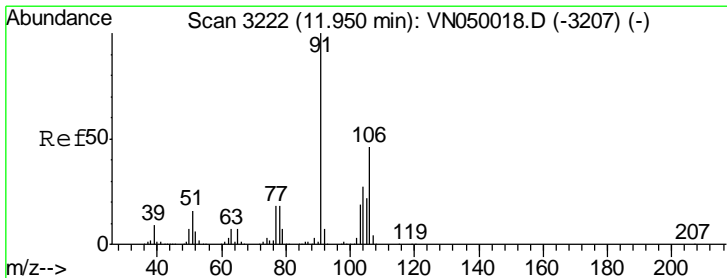
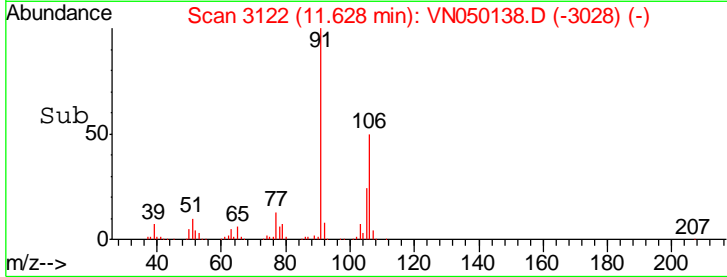
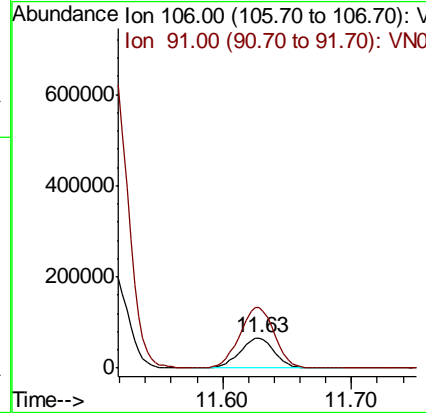
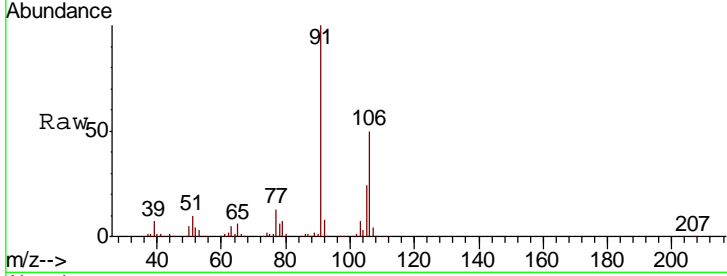




#68
 m/p-Xylenes
 Concen: 7.635 ug/l
 RT: 11.63 min Scan# 3122
 Delta R.T. 0.00 min
 Lab File: VN050138.D
 Acq: 27 Jul 2018 18:43

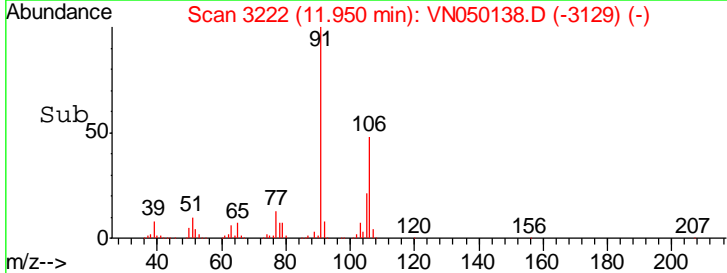
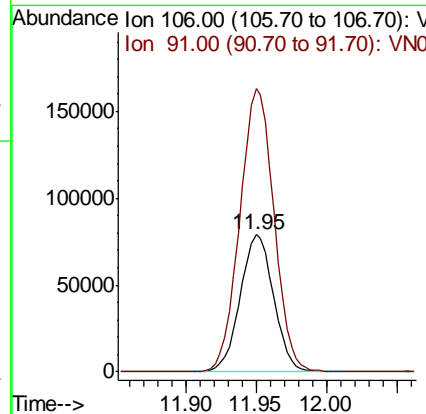
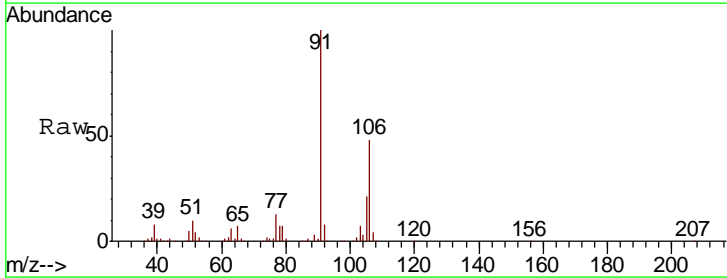
Instrument :
 MSVOA_N
 ClientSampled :
 MW-3BDL

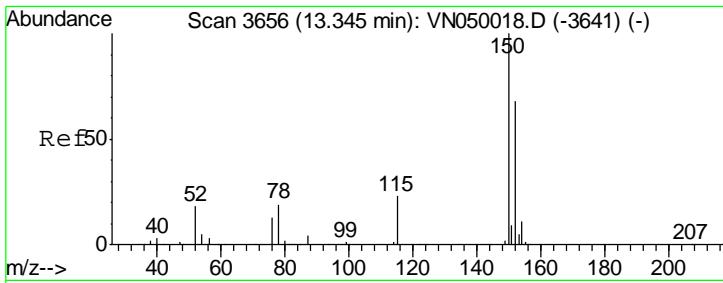
Tgt Ion:106 Resp: 123154
 Ion Ratio Lower Upper
 106 100
 91 203.8 162.2 243.2



#69
 o-Xylene
 Concen: 8.536 ug/l
 RT: 11.95 min Scan# 3222
 Delta R.T. 0.00 min
 Lab File: VN050138.D
 Acq: 27 Jul 2018 18:43

Tgt Ion:106 Resp: 131261
 Ion Ratio Lower Upper
 106 100
 91 211.2 107.7 323.1

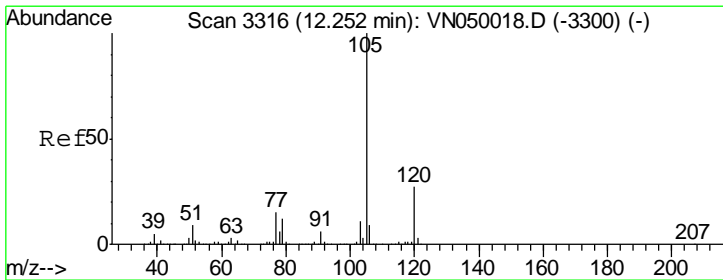
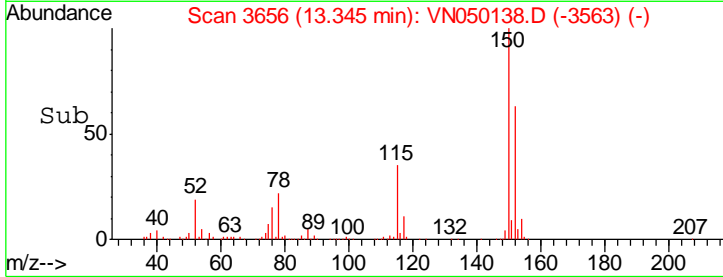
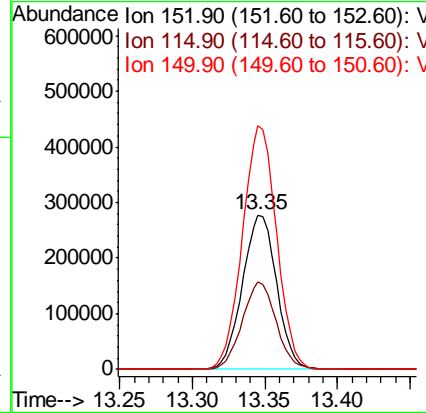
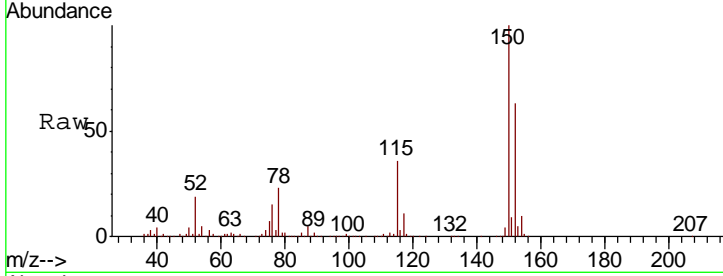




#72
 1,4-Dichlorobenzene-d4
 Concen: 50.000 ug/l
 RT: 13.35 min Scan# 3656
 Delta R.T. 0.00 min
 Lab File: VN050138.D
 Acq: 27 Jul 2018 18:43

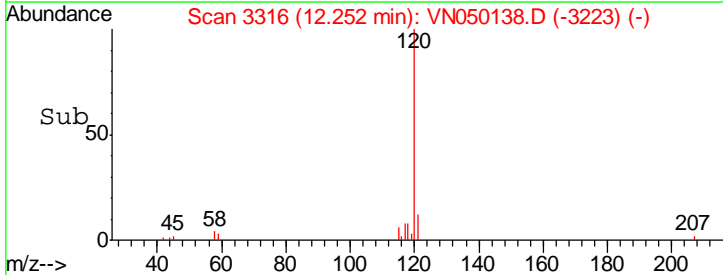
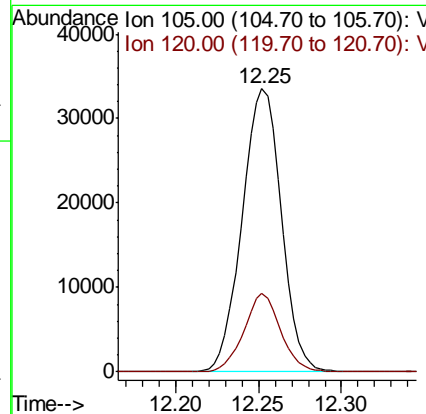
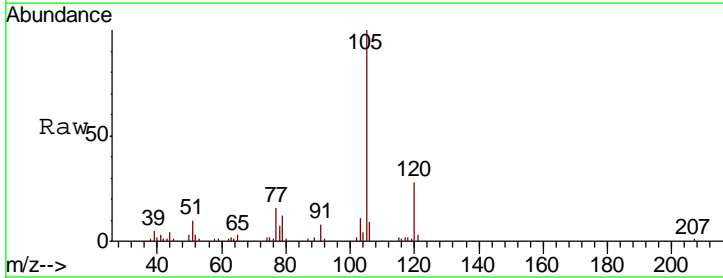
Instrument :
 MSVOA_N
 ClientSampled :
 MW-3BDL

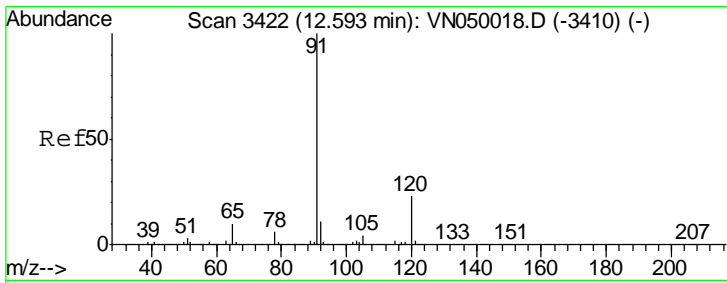
Tgt Ion	Resp	Lower	Upper
152	100		
115	55.9	27.8	83.3
150	157.1	0.0	348.6



#73
 Isopropylbenzene
 Concen: 1.562 ug/l
 RT: 12.25 min Scan# 3316
 Delta R.T. 0.00 min
 Lab File: VN050138.D
 Acq: 27 Jul 2018 18:43

Tgt Ion	Resp	Lower	Upper
105	100		
120	25.7	13.3	39.8

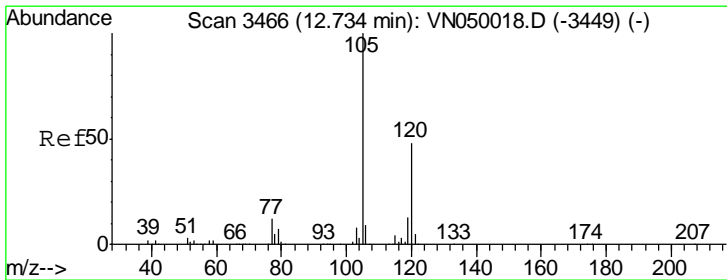
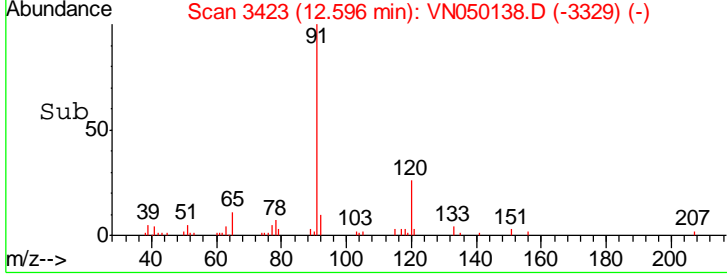
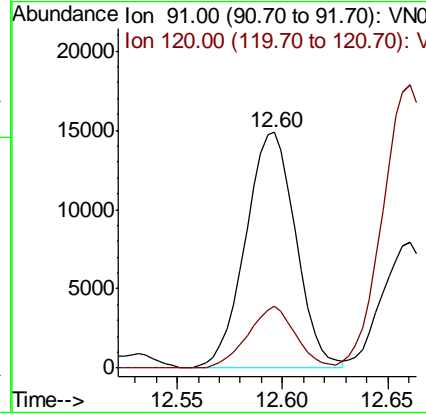
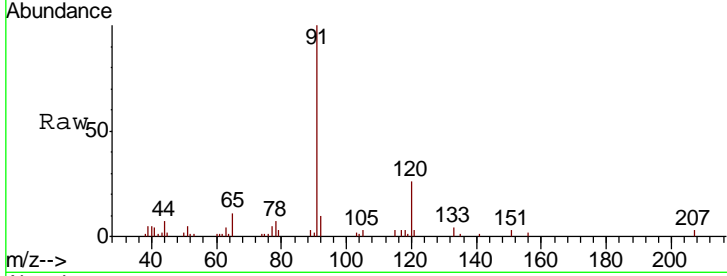




#78
 n-propylbenzene
 Concen: 0.623 ug/l
 RT: 12.60 min Scan# 3423
 Delta R.T. 0.00 min
 Lab File: VN050138.D
 Acq: 27 Jul 2018 18:43

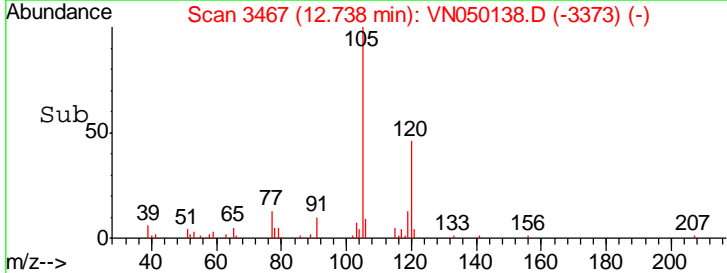
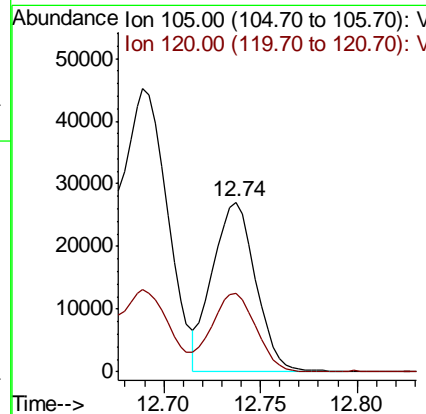
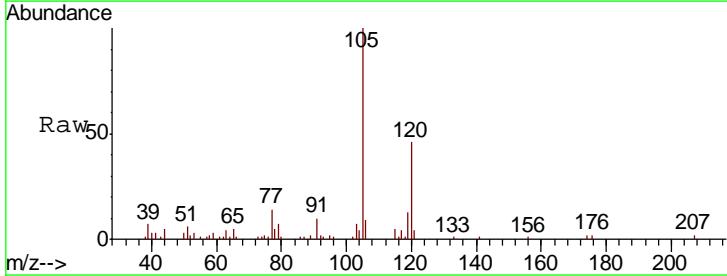
Instrument :
 MSVOA_N
 ClientSampled :
 MW-3BDL

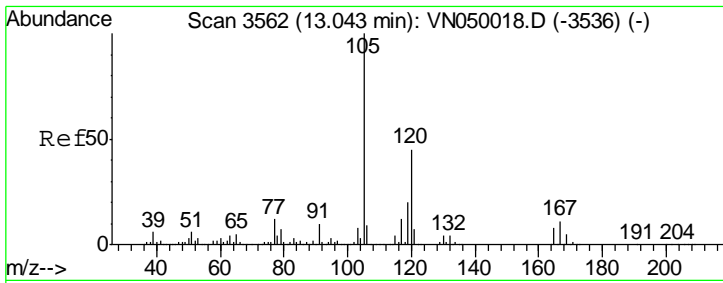
Tgt Ion: 91 Resp: 24619
 Ion Ratio Lower Upper
 91 100
 120 25.0 11.6 34.7



#80
 1,3,5-Trimethylbenzene
 Concen: 1.522 ug/l
 RT: 12.74 min Scan# 3467
 Delta R.T. 0.00 min
 Lab File: VN050138.D
 Acq: 27 Jul 2018 18:43

Tgt Ion: 105 Resp: 42316
 Ion Ratio Lower Upper
 105 100
 120 47.1 24.4 73.2

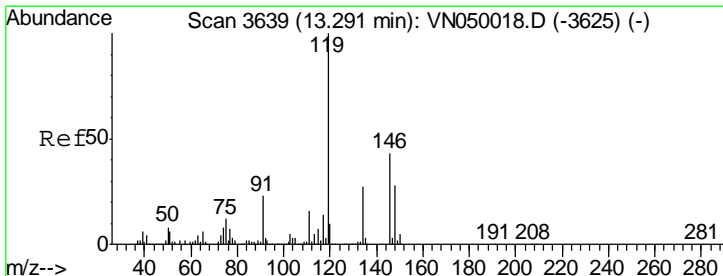
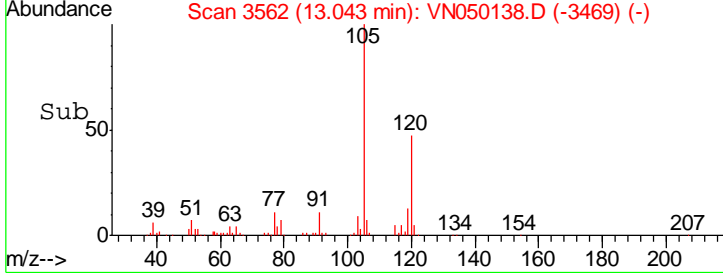
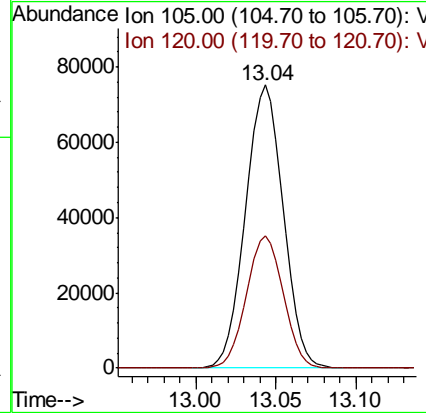
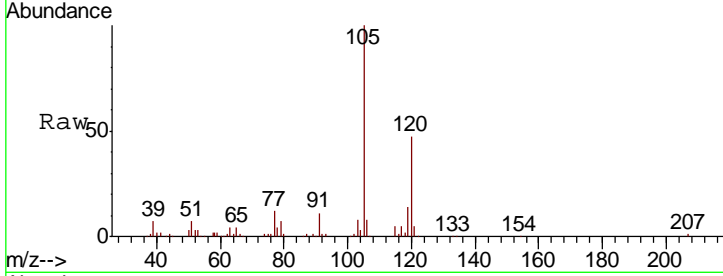




#84
 1,2,4-Trimethylbenzene
 Concen: 4.311 ug/l
 RT: 13.04 min Scan# 3562
 Delta R.T. 0.00 min
 Lab File: VN050138.D
 Acq: 27 Jul 2018 18:43

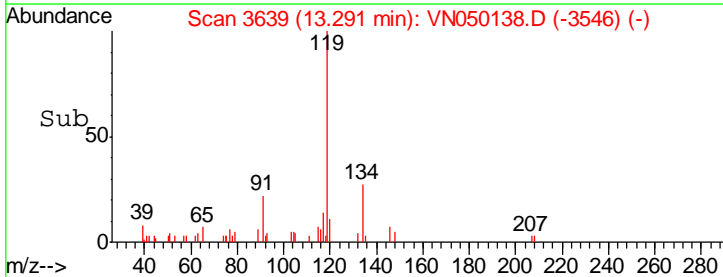
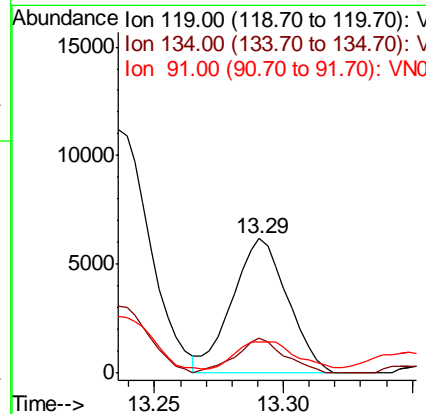
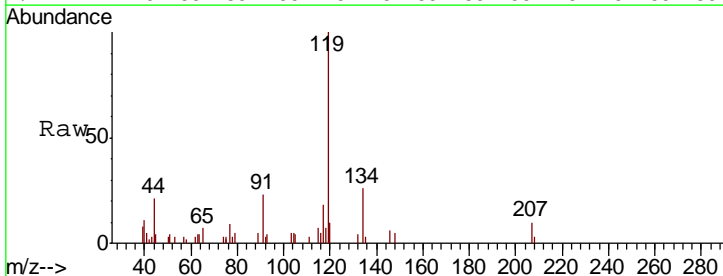
Instrument :
 MSVOA_N
 ClientSampled :
 MW-3BDL

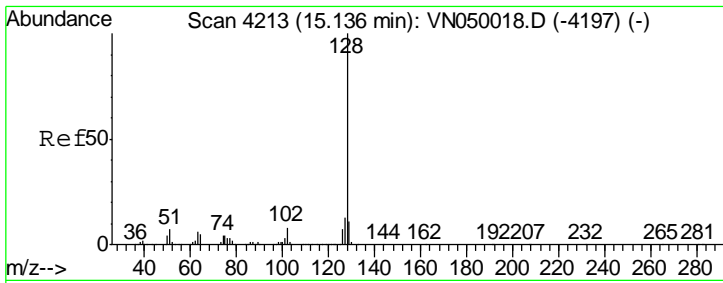
Tgt Ion	Resp	Lower	Upper
105	120818		
120	45.6	22.9	68.7



#86
 p-Isopropyltoluene
 Concen: 0.339 ug/l
 RT: 13.29 min Scan# 3639
 Delta R.T. 0.00 min
 Lab File: VN050138.D
 Acq: 27 Jul 2018 18:43

Tgt Ion	Resp	Lower	Upper
119	9263		
134	23.1	13.3	39.8
91	20.4	11.4	34.2





#95
 Naphthalene
 Concen: 46.988 ug/l
 RT: 15.14 min Scan# 4213
 Delta R.T. 0.00 min
 Lab File: VN050138.D
 Acq: 27 Jul 2018 18:43

Instrument : MSVOA_N
 ClientSampled : MW-3BDL

Tot Ion	Ratio	Lower	Upper
128	100		
127	13.2	10.4	15.6
129	10.7	8.8	13.2

