

Data Path : Z:\VOASRV\HPCHEM1\MSVOA N\DATA\VN072919\
 Data File : VN056957.D
 Acq On : 29 Jul 2019 17:29
 Operator : JC/SP
 Sample : VSSTDICC0.5
 Misc : 5.00mL/MSVOA N/WATER
 ALS Vial : 5 Sample Multiplier: 1

Instrument :
 MSVOA_N
 ClientSampleId :
 VSSTDICC0.5

Quant Time: Jul 30 01:48:43 2019
 Quant Method : Z:\VOASRV\HPCHEM1\MSVOA_N\METHODS\82N072919SIM-VINYLM
 Quant Title : SW846 8260
 QLast Update : Tue Jul 30 01:43:29 2019
 Response via : Initial Calibration

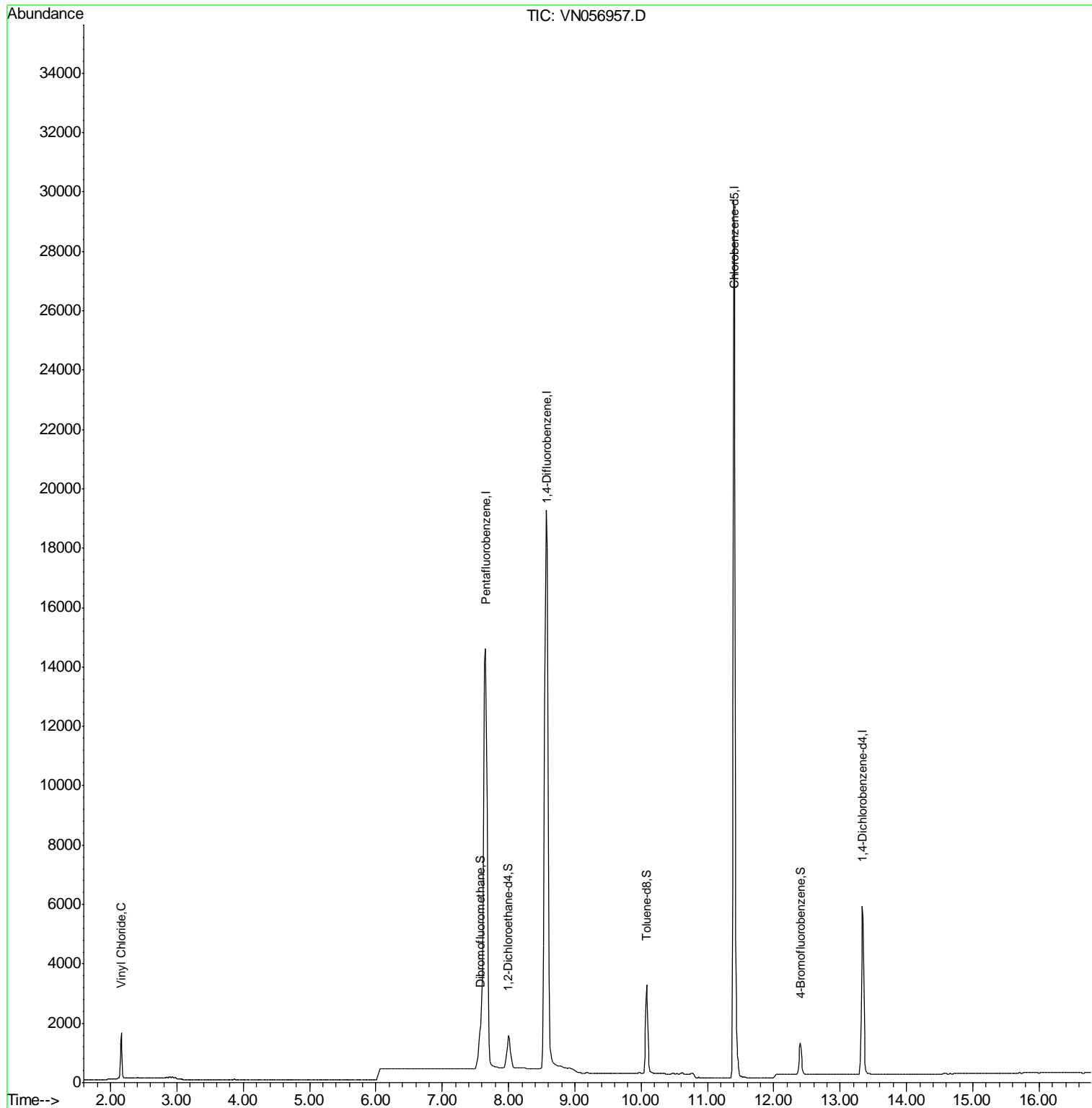
Internal Standards	R.T.	QIon	Response	Conc	Units	Dev(Min)
1) Pentafluorobenzene	7.65	168	36730	5.00	ug/l	0.01
4) 1,4-Difluorobenzene	8.58	114	58967	5.00	ug/l	0.01
8) Chlorobenzene-d5	11.40	117	32480	5.00	ug/l	0.00
9) 1,4-Dichlorobenzene-d4	13.33	152	4528	5.00	ug/l	0.00
System Monitoring Compounds						
3) 1,2-Dichloroethane-d4	8.00	65	2577	0.60	ug/l	0.00
Spiked Amount	5.000	Range	81 - 118	Recovery	=	12.00%#
5) Dibromofluoromethane	7.57	113	2095	0.59	ug/l	0.00
Spiked Amount	5.000	Range	80 - 119	Recovery	=	11.80%#
6) Toluene-d8	10.08	98	4281	0.59	ug/l	0.00
Spiked Amount	5.000	Range	89 - 112	Recovery	=	11.80%#
7) 4-Bromofluorobenzene	12.40	95	979	0.53	ug/l	0.00
Spiked Amount	5.000	Range	85 - 114	Recovery	=	10.60%#
Target Compounds						Qvalue
2) Vinyl Chloride	2.16	62	1726	0.534	ug/l	92

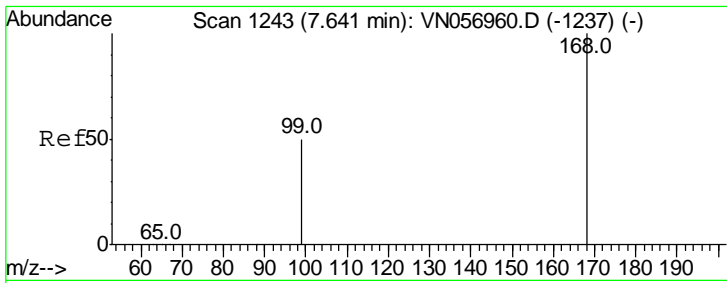
(#) = qualifier out of range (m) = manual integration (+) = signals summed

Data Path : Z:\VOASRV\HPCHEM1\MSVOA N\DATA\VN072919\
Data File : VN056957.D
Acq On : 29 Jul 2019 17:29
Operator : JC/SP
Sample : VSSTDIC0.5
Misc : 5.00mL/MSVOA N/WATER
ALS Vial : 5 Sample Multiplier: 1

Instrument :
MSVOA_N
ClientSampleId :
VSSTDIC0.5

Quant Time: Jul 30 01:48:43 2019
Quant Method : Z:\VOASRV\HPCHEM1\MSVOA_N\METHODS\82N072919SIM-VINYL.M
Quant Title : SW846 8260
QLast Update : Tue Jul 30 01:43:29 2019
Response via : Initial Calibration

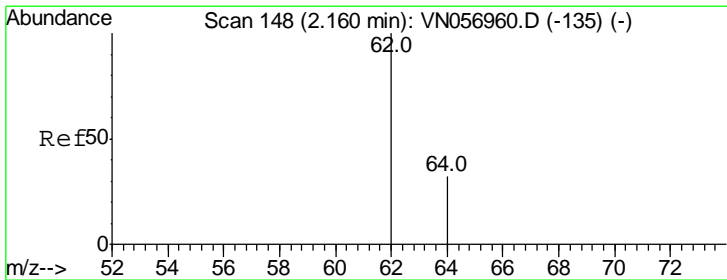
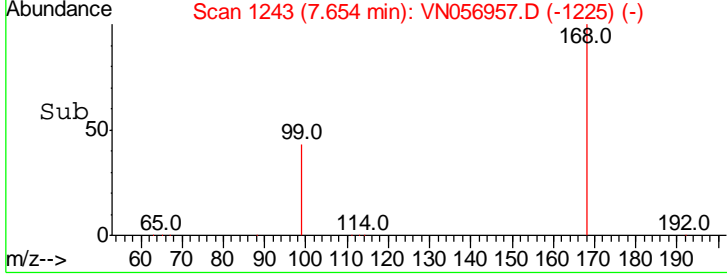
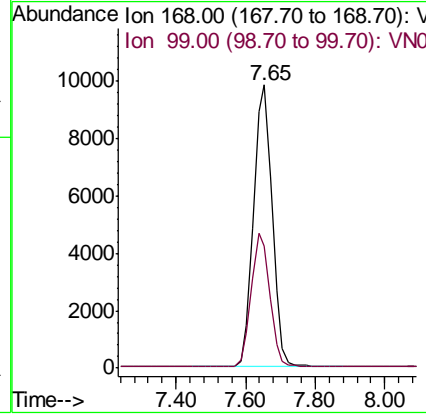
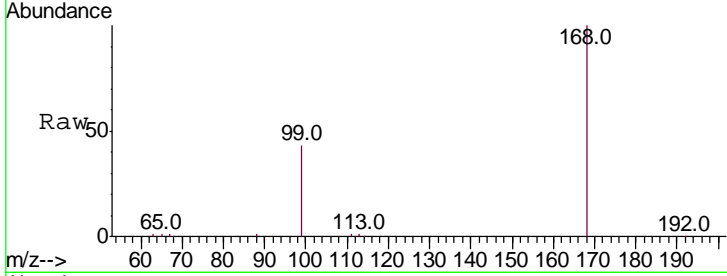




#1
 Pentafluorobenzene
 Concen: 5.000 ug/l
 RT: 7.65 min Scan# 1243
 Delta R.T. 0.01 min
 Lab File: VN056957.D
 Acq: 29 Jul 2019 17:29

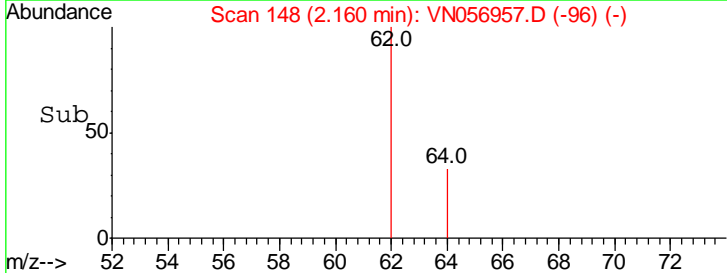
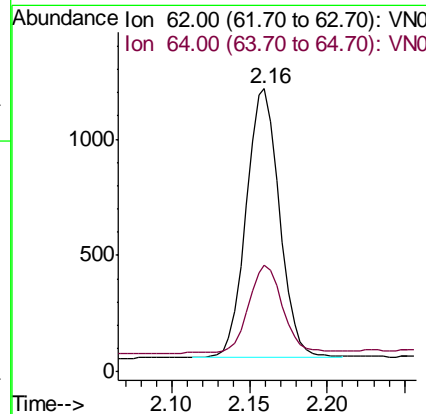
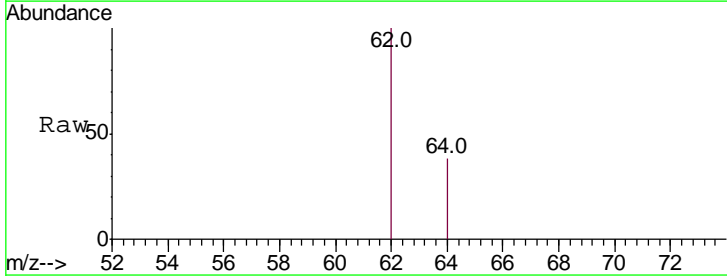
Instrument : MSVOA_N
 ClientSampled : VN056957.D
 VSSTDIC0.5

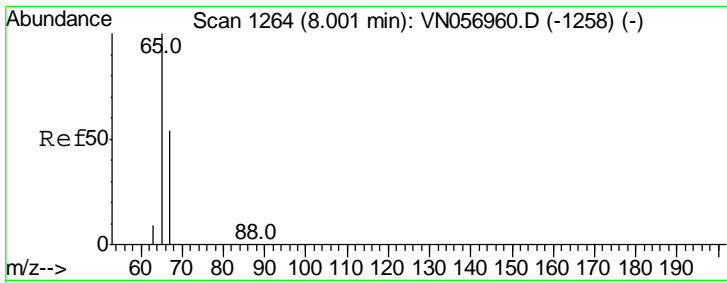
Tgt Ion: 168 Resp: 36730
 Ion Ratio Lower Upper
 168 100
 99 43.4 40.0 60.0



#2
 Vinyl Chloride
 Concen: 0.534 ug/l
 RT: 2.16 min Scan# 148
 Delta R.T. -0.00 min
 Lab File: VN056957.D
 Acq: 29 Jul 2019 17:29

Tgt Ion: 62 Resp: 1726
 Ion Ratio Lower Upper
 62 100
 64 37.7 26.4 39.6

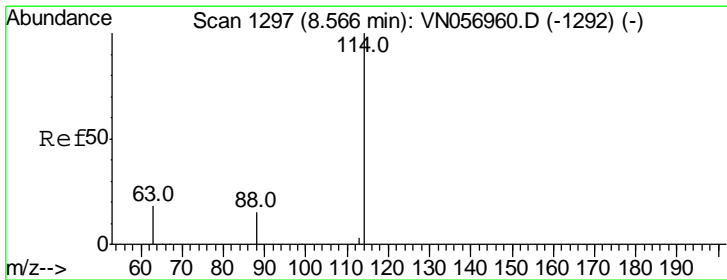
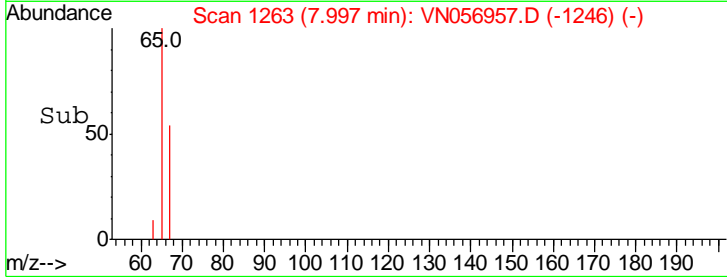
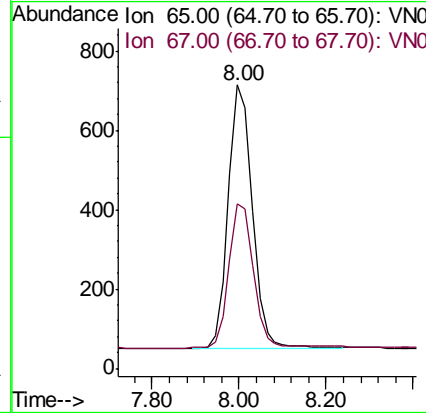
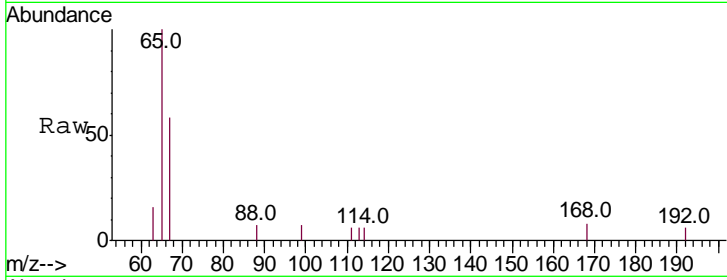




#3
 1,2-Dichloroethane-d4
 Concen: 0.603 ug/l
 RT: 8.00 min Scan# 1263
 Delta R.T. -0.00 min
 Lab File: VN056957.D
 Acq: 29 Jul 2019 17:29

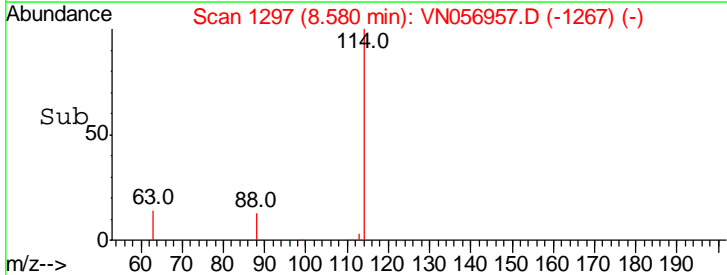
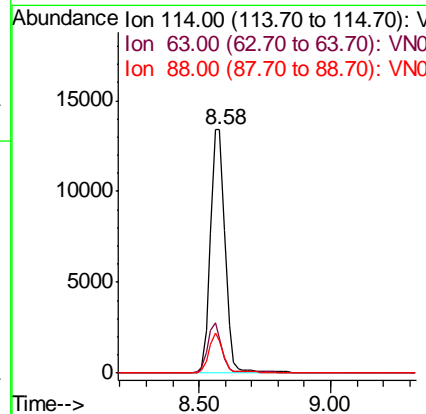
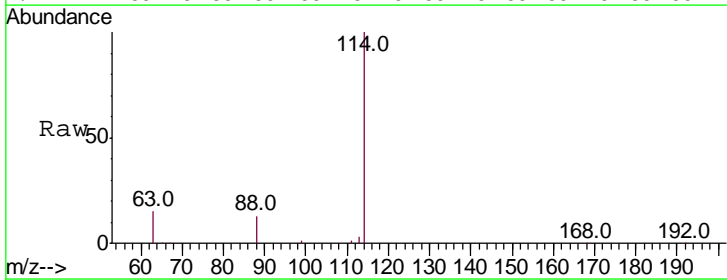
Instrument : MSVOA_N
 ClientSampled : VSSTDIC0.5

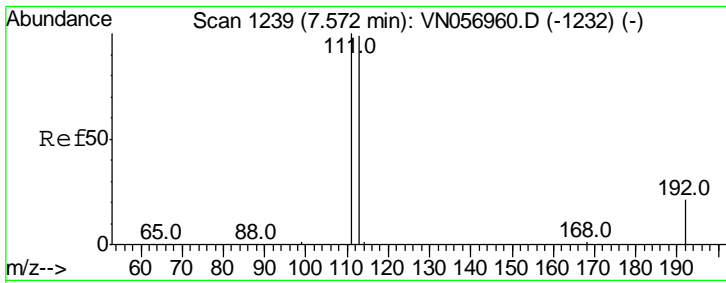
Tgt Ion	Resp	Lower	Upper
65	100		
67	58.0	0.0	109.6



#4
 1,4-Difluorobenzene
 Concen: 5.000 ug/l
 RT: 8.58 min Scan# 1297
 Delta R.T. 0.01 min
 Lab File: VN056957.D
 Acq: 29 Jul 2019 17:29

Tgt Ion	Resp	Lower	Upper
114	100		
63	14.5	0.0	37.6
88	13.5	0.0	31.0

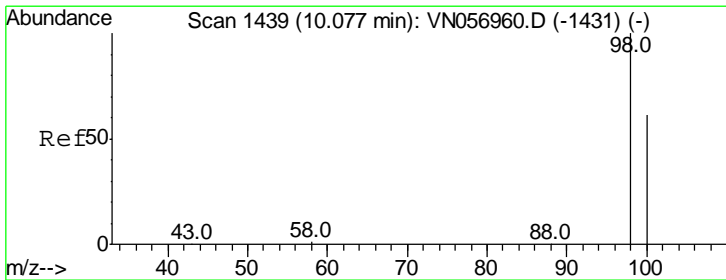
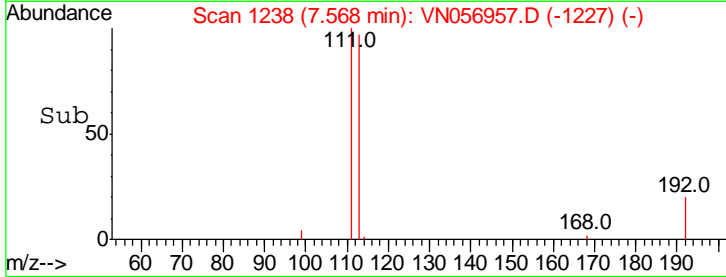
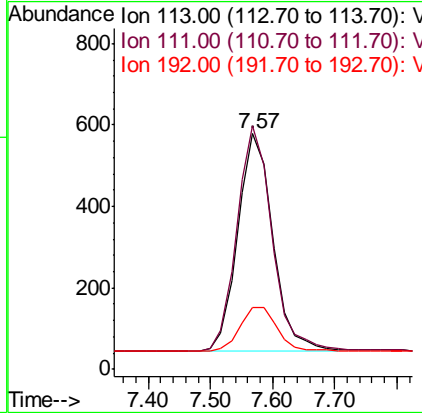
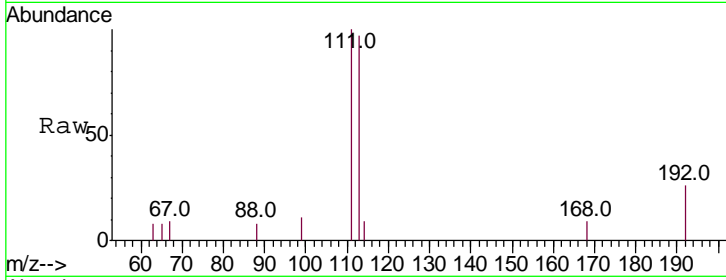




#5
 Dibromofluoromethane
 Concen: 0.586 ug/l
 RT: 7.57 min Scan# 1238
 Delta R.T. -0.00 min
 Lab File: VN056957.D
 Acq: 29 Jul 2019 17:29

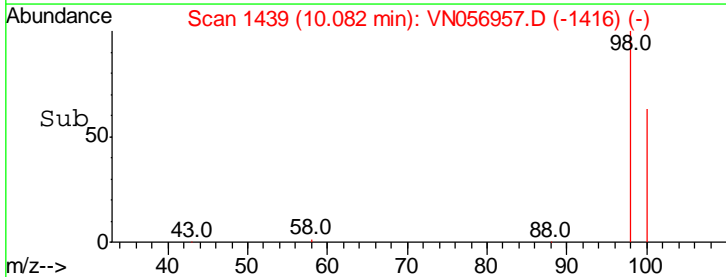
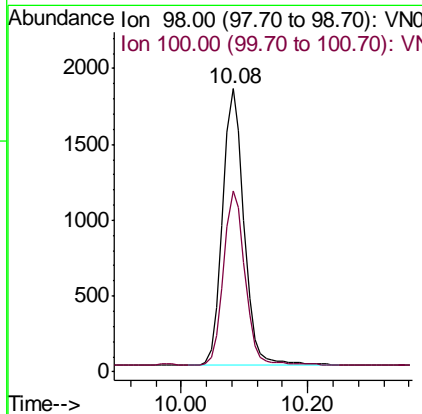
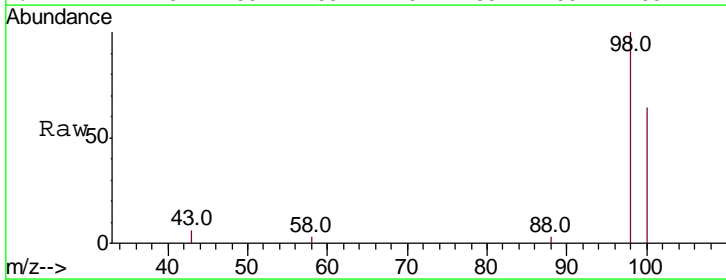
Instrument :
 MSVOA_N
 ClientSampled :
 VSSTDIC0.5

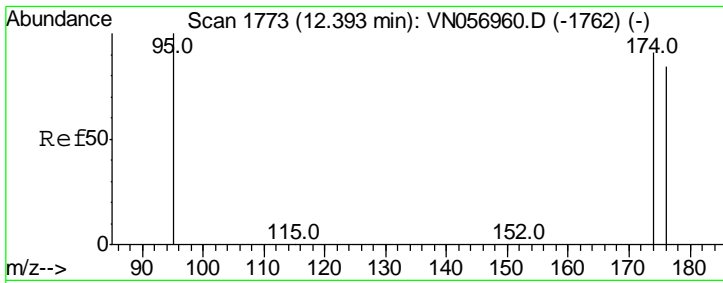
Tgt Ion	Resp	Lower	Upper
113	100		
111	103.3	81.1	121.7
192	26.4	17.9	26.9



#6
 Toluene-d8
 Concen: 0.587 ug/l
 RT: 10.08 min Scan# 1439
 Delta R.T. 0.00 min
 Lab File: VN056957.D
 Acq: 29 Jul 2019 17:29

Tgt Ion	Resp	Lower	Upper
98	100		
100	64.0	49.0	73.4



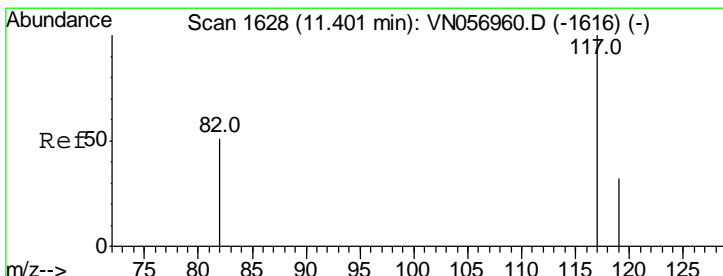
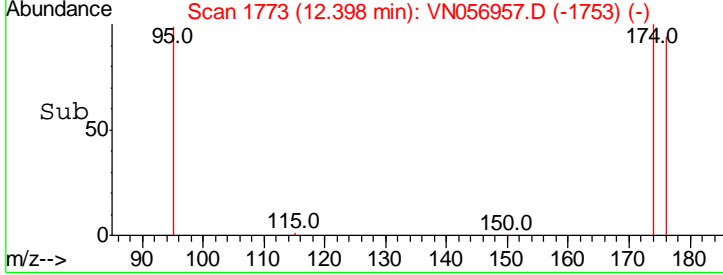
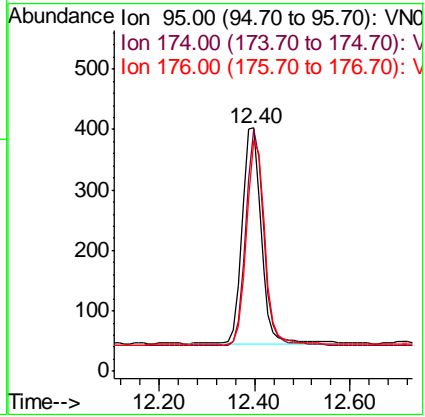
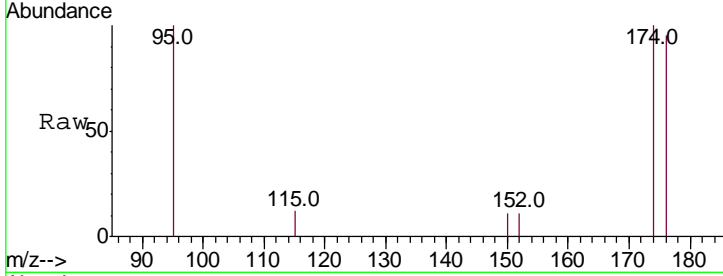


#7
 4-Bromofluorobenzene
 Concen: 0.533 ug/l
 RT: 12.40 min Scan# 1773
 Delta R.T. 0.00 min
 Lab File: VN056957.D
 Acq: 29 Jul 2019 17:29

Instrument : MSVOA_N
 ClientSampled : VSSTDIC0.5

Tgt Ion: 95 Resp: 979

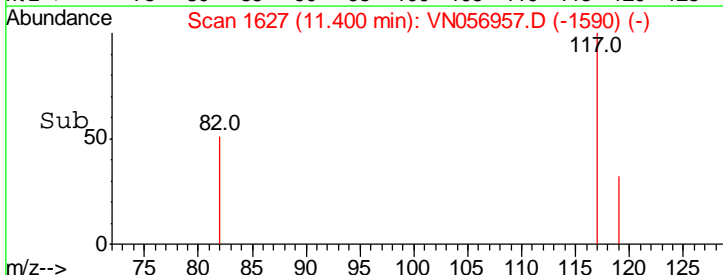
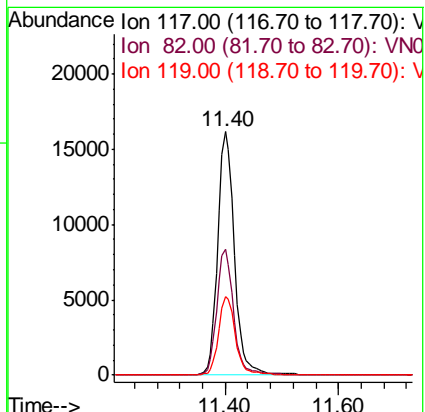
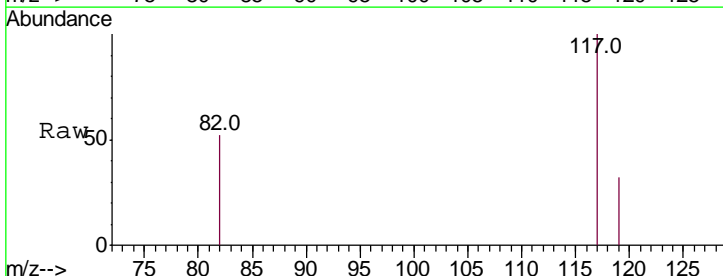
Ion	Ratio	Lower	Upper
95	100		
174	99.8	0.0	181.4
176	95.0	0.0	168.2

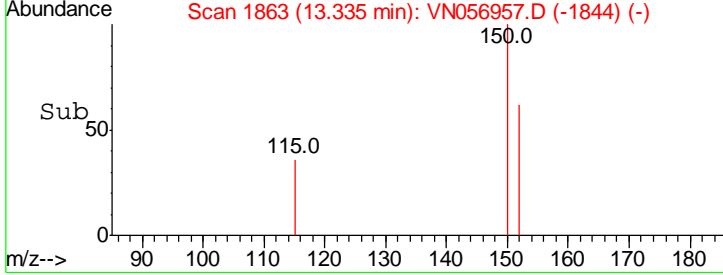
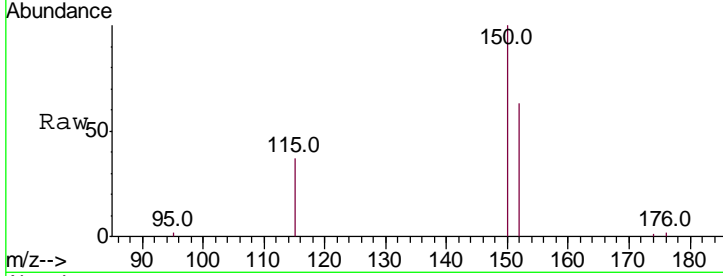
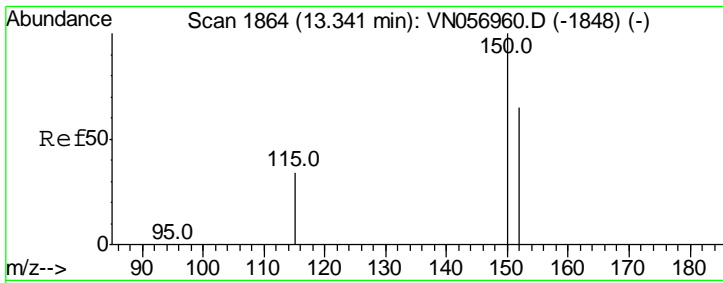


#8
 Chlorobenzene-d5
 Concen: 5.000 ug/l
 RT: 11.40 min Scan# 1627
 Delta R.T. -0.00 min
 Lab File: VN056957.D
 Acq: 29 Jul 2019 17:29

Tgt Ion: 117 Resp: 32480

Ion	Ratio	Lower	Upper
117	100		
82	51.5	40.7	61.1
119	32.0	25.6	38.4





#9
 1,4-Dichlorobenzene-d4
 Concen: 5.000 ug/l
 RT: 13.33 min Scan# 1863
 Delta R.T. -0.01 min
 Lab File: VN056957.D
 Acq: 29 Jul 2019 17:29

Instrument : MSVOA_N
 ClientSampleId : VSSTDICC0.5

Tot Ion:152 Resp: 4528

Ion	Ratio	Lower	Upper
152	100		
115	58.3	27.0	80.8
150	158.9	0.0	306.8

