

Data Path : Z:\voasrv\HPCHEM1\MSVOA N\Data\VN073019\
 Data File : VN056971.D
 Acq On : 30 Jul 2019 13:15
 Operator : JC/SP
 Sample : K4018-01
 Misc : 5.00mL/MSVOA N/WATER
 ALS Vial : 9 Sample Multiplier: 1

Instrument :
 MSVOA_N
 ClientSampled :
 SU19-MSW0411

Quant Time: Aug 12 09:40:50 2019
 Quant Method : Z:\VOASRV\HPCHEM1\MSVOA_N\METHODS\82N072919SIM-VINYLM
 Quant Title : SW846 8260
 QLast Update : Tue Jul 30 01:50:04 2019
 Response via : Initial Calibration

Internal Standards	R.T.	QIon	Response	Conc	Units	Dev(Min)
1) Pentafluorobenzene	7.65	168	47241	5.00	ug/l	0.01
4) 1,4-Difluorobenzene	8.58	114	59691	5.00	ug/l	0.01
8) Chlorobenzene-d5	11.40	117	36026	5.00	ug/l	0.00
9) 1,4-Dichlorobenzene-d4	13.35	152	5023	5.00	ug/l	0.00

System Monitoring Compounds

3) 1,2-Dichloroethane-d4	8.00	65	24923	4.26	ug/l	0.00
Spiked Amount	5.000	Range	81 - 118	Recovery	=	85.20%
5) Dibromofluoromethane	7.57	113	20969	5.17	ug/l	0.00
Spiked Amount	5.000	Range	80 - 119	Recovery	=	103.40%
6) Toluene-d8	10.08	98	39617	4.79	ug/l	0.00
Spiked Amount	5.000	Range	89 - 112	Recovery	=	95.80%
7) 4-Bromofluorobenzene	12.39	95	8185	4.24	ug/l	0.00
Spiked Amount	5.000	Range	85 - 114	Recovery	=	84.80%#

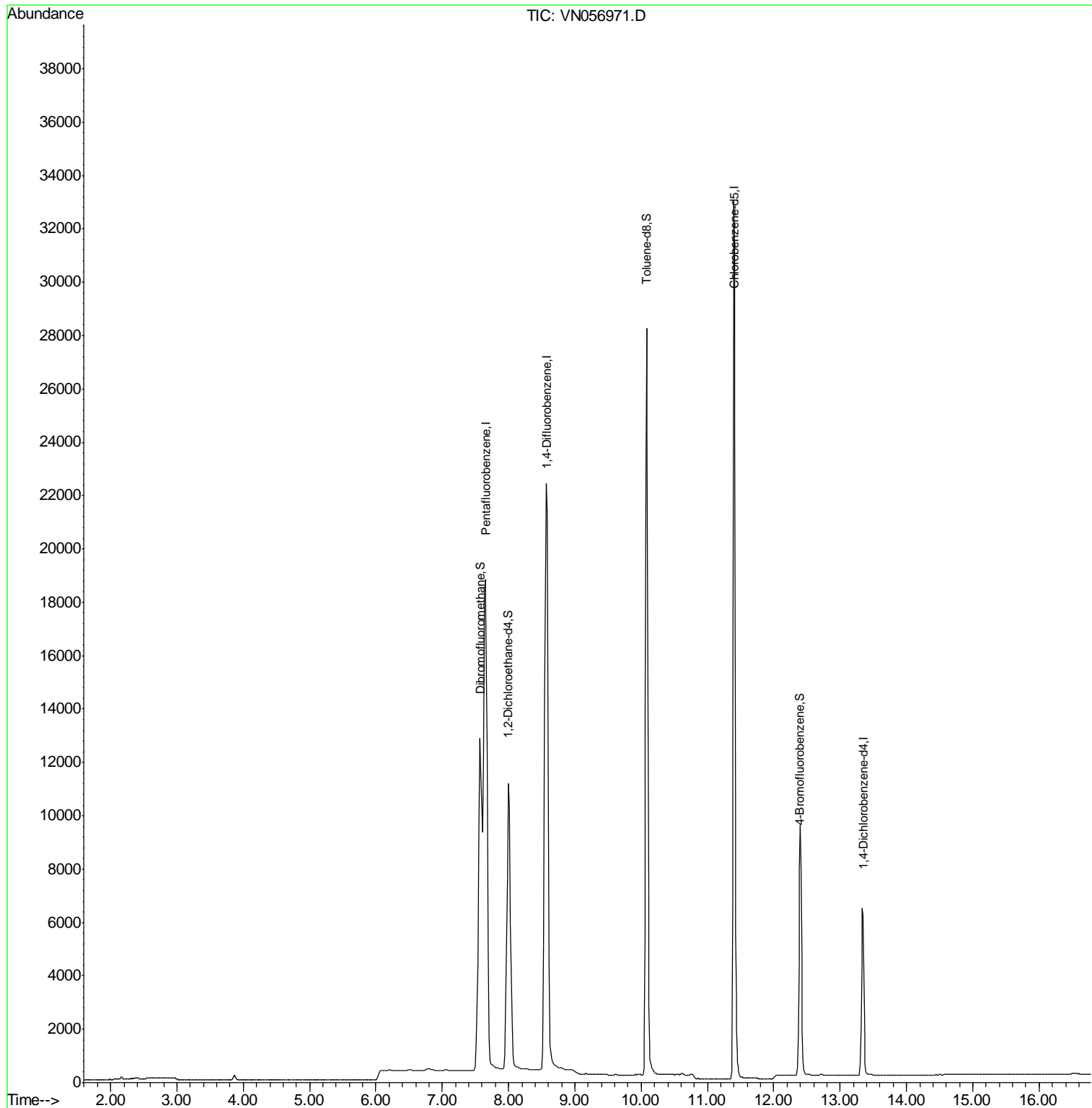
Target Compounds Qvalue

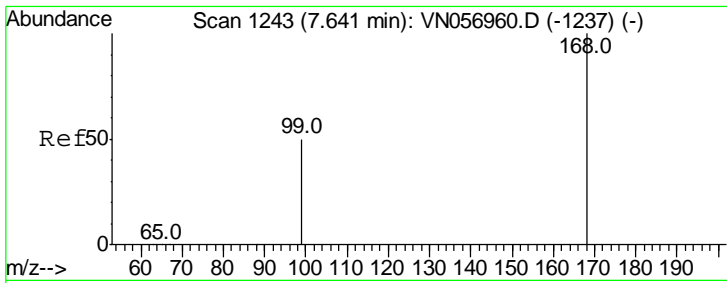
(#) = qualifier out of range (m) = manual integration (+) = signals summed

Data Path : Z:\voasrv\HPCHEM1\MSVOA N\Data\VN073019\
Data File : VN056971.D
Acq On : 30 Jul 2019 13:15
Operator : JC/SP
Sample : K4018-01
Misc : 5.00mL/MSVOA N/WATER
ALS Vial : 9 Sample Multiplier: 1

Instrument :
MSVOA_N
ClientSampleId :
SU19-MSW0411

Quant Time: Aug 12 09:40:50 2019
Quant Method : Z:\VOASRV\HPCHEM1\MSVOA_N\METHODS\82N072919SIM-VINYL.M
Quant Title : SW846 8260
QLast Update : Tue Jul 30 01:50:04 2019
Response via : Initial Calibration



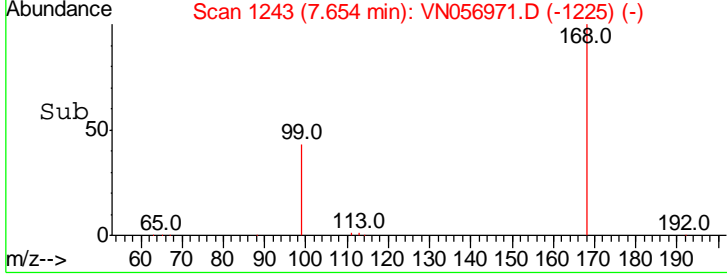
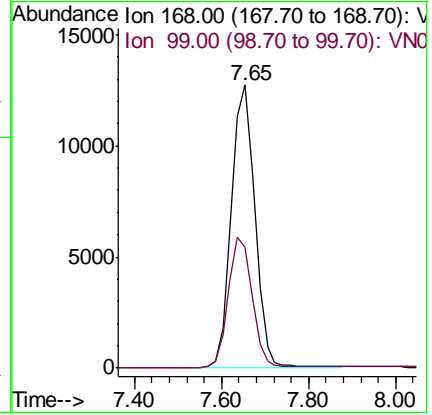
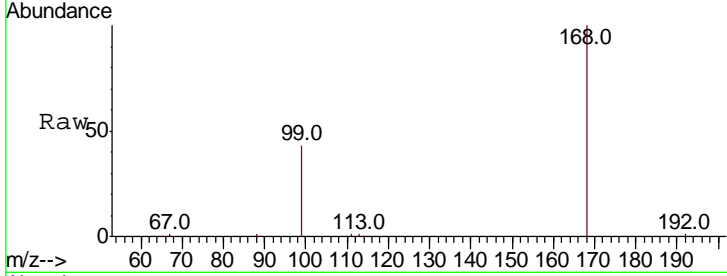


#1
 Pentafluorobenzene
 Concen: 5.000 ug/l
 RT: 7.65 min Scan# 1243
 Delta R.T. 0.01 min
 Lab File: VN056971.D
 Acq: 30 Jul 2019 13:15

Instrument : MSVOA_N
 ClientSampled : SU19-MSW0411

Tgt Ion: 168 Resp: 47241

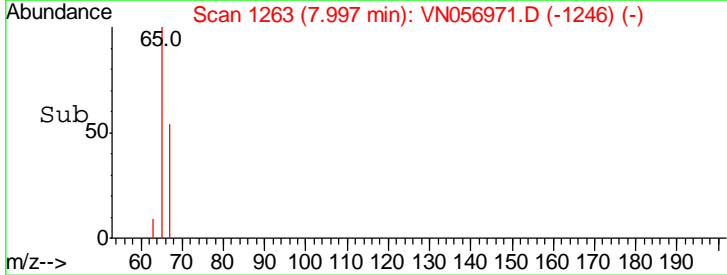
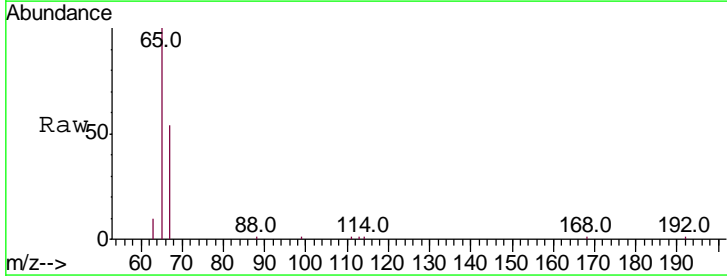
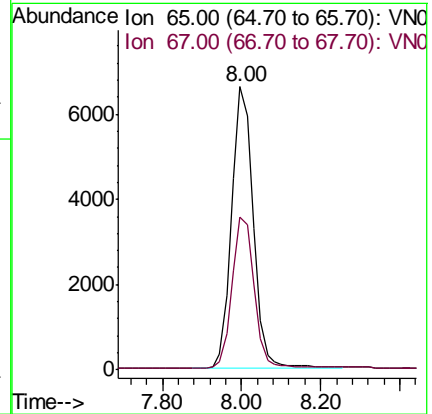
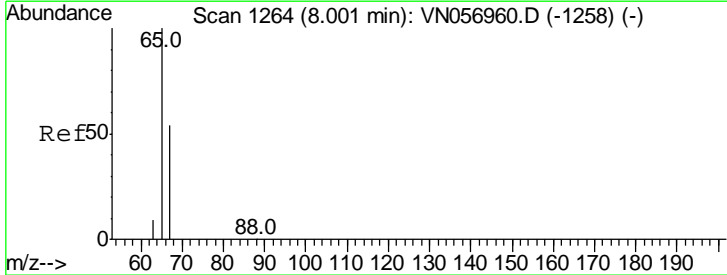
Ion	Ratio	Lower	Upper
168	100		
99	42.9	40.0	60.0

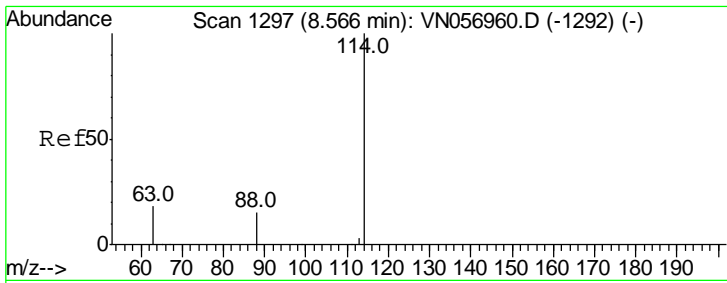


#3
 1,2-Dichloroethane-d4
 Concen: 4.257 ug/l
 RT: 8.00 min Scan# 1263
 Delta R.T. -0.00 min
 Lab File: VN056971.D
 Acq: 30 Jul 2019 13:15

Tgt Ion: 65 Resp: 24923

Ion	Ratio	Lower	Upper
65	100		
67	54.2	0.0	109.6

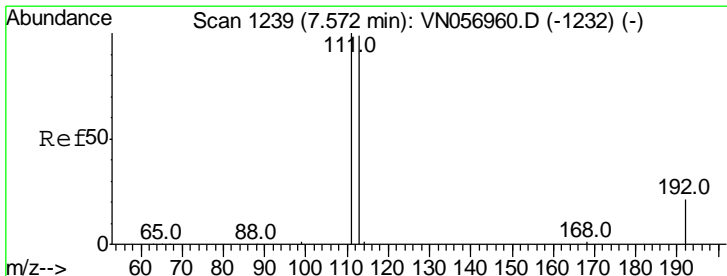
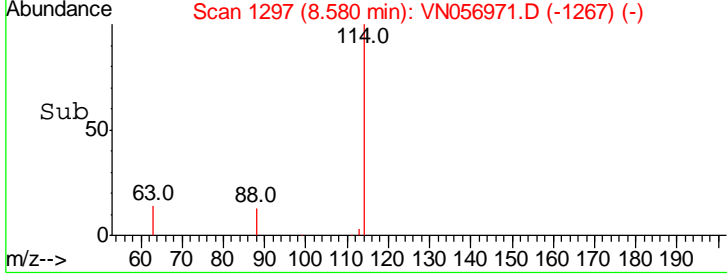
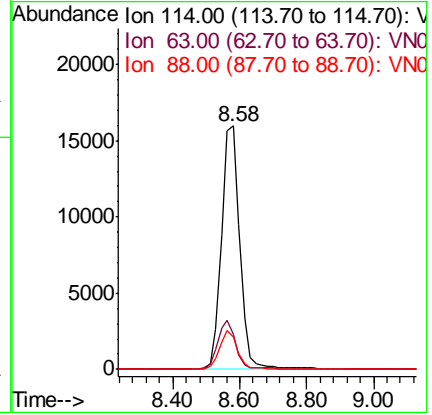
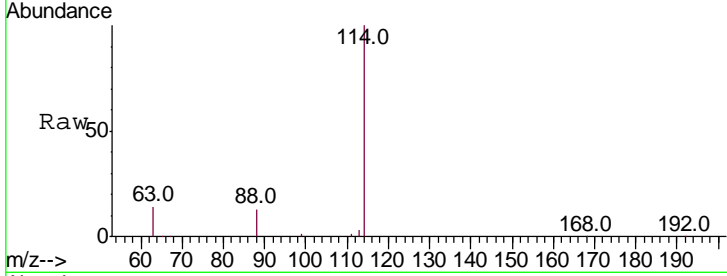




#4
 1,4-Difluorobenzene
 Concen: 5.000 ug/l
 RT: 8.58 min Scan# 1297
 Delta R.T. 0.01 min
 Lab File: VN056971.D
 Acq: 30 Jul 2019 13:15

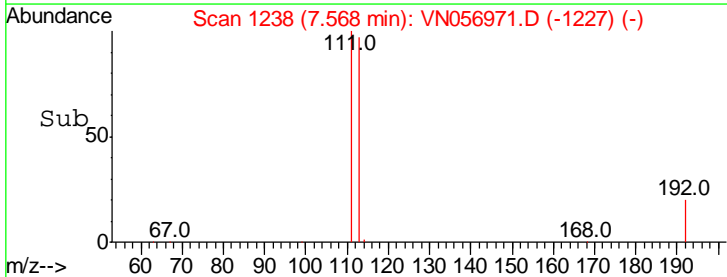
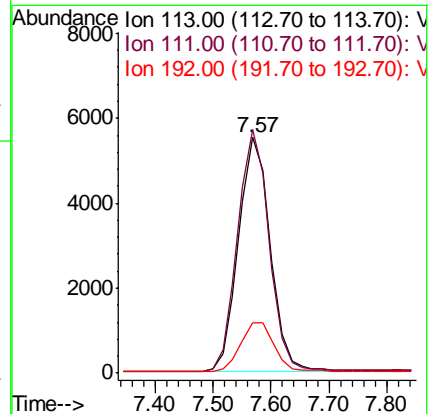
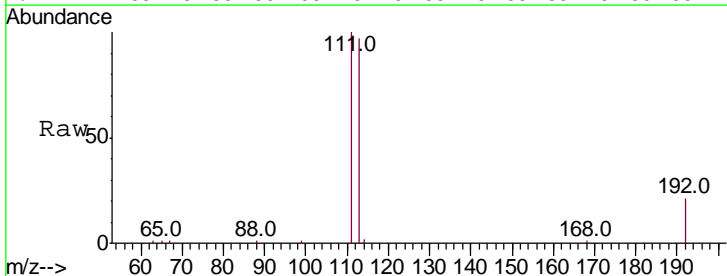
Instrument : MSVOA_N
 ClientSampled : SU19-MSW0411

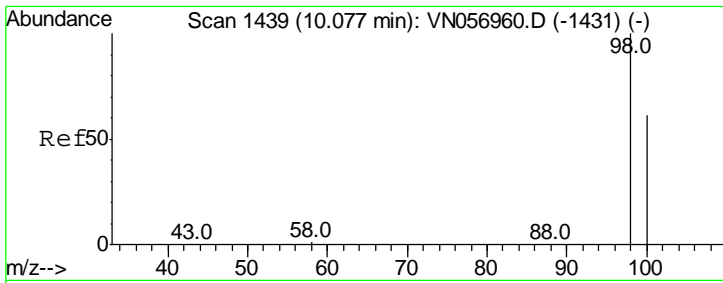
Tgt Ion	Ratio	Lower	Upper
114	100		
63	14.4	0.0	37.6
88	13.2	0.0	31.0



#5
 Dibromofluoromethane
 Concen: 5.171 ug/l
 RT: 7.57 min Scan# 1238
 Delta R.T. -0.00 min
 Lab File: VN056971.D
 Acq: 30 Jul 2019 13:15

Tgt Ion	Ratio	Lower	Upper
113	100		
111	103.4	81.1	121.7
192	21.6	17.9	26.9

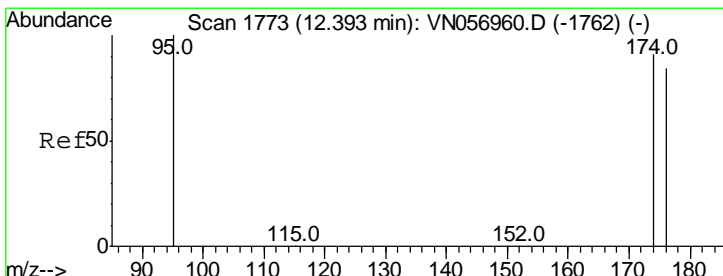
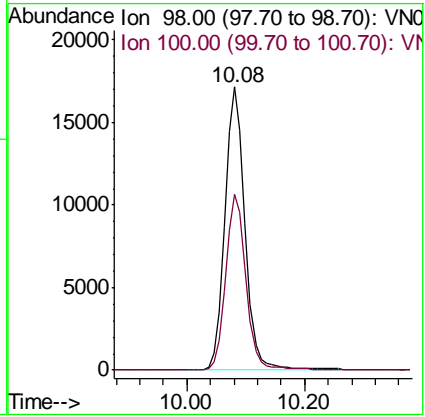
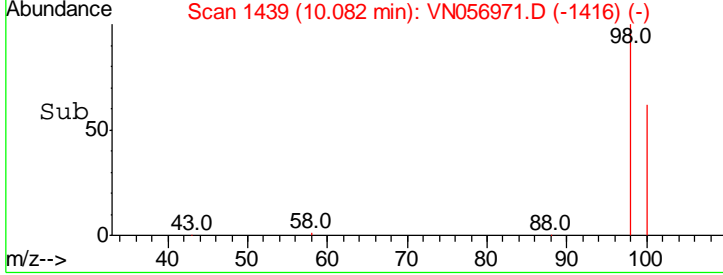
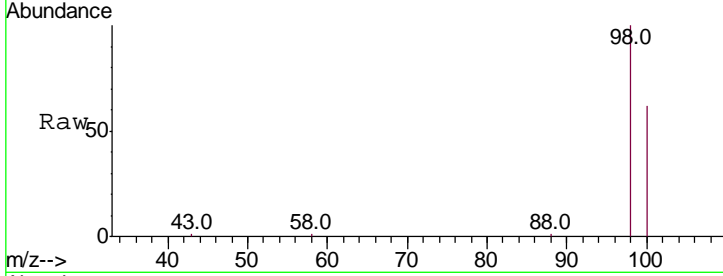




#6
 Toluene-d8
 Concen: 4.787 ug/l
 RT: 10.08 min Scan# 1439
 Delta R.T. 0.00 min
 Lab File: VN056971.D
 Acq: 30 Jul 2019 13:15

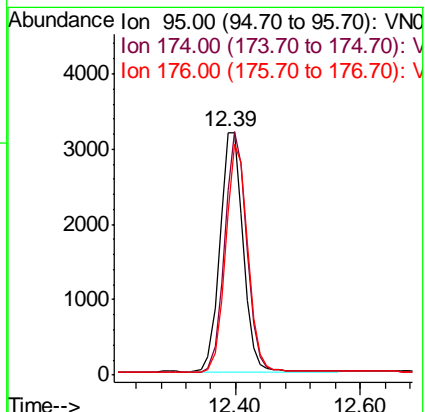
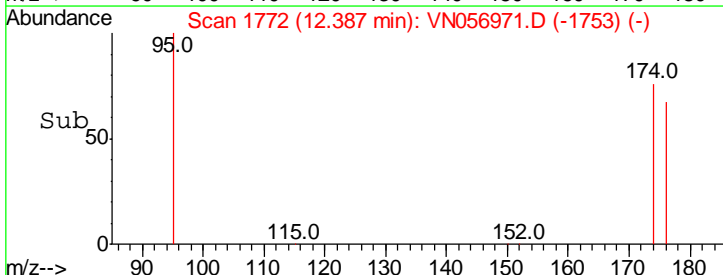
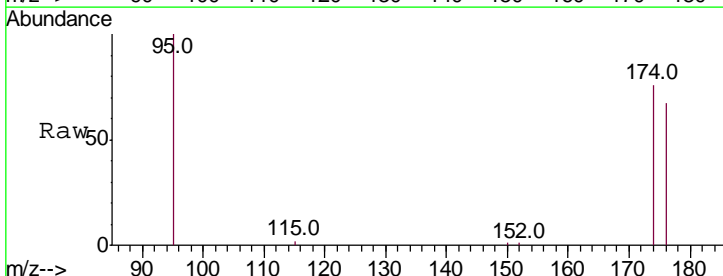
Instrument : MSVOA_N
 ClientSampled : SU19-MSW0411

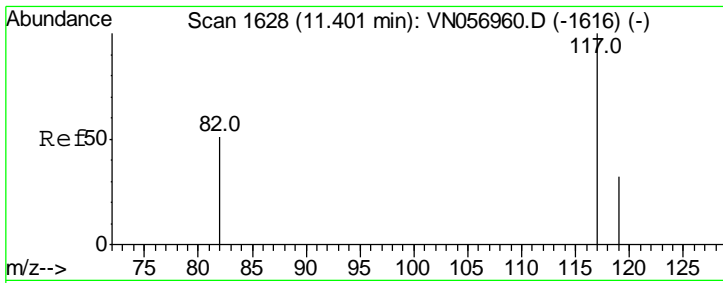
Tgt Ion	Resp	Lower	Upper
98	100		
100	62.3	49.0	73.4



#7
 4-Bromofluorobenzene
 Concen: 4.238 ug/l
 RT: 12.39 min Scan# 1772
 Delta R.T. -0.01 min
 Lab File: VN056971.D
 Acq: 30 Jul 2019 13:15

Tgt Ion	Resp	Lower	Upper
95	100		
174	76.2	0.0	181.4
176	67.3	0.0	168.2

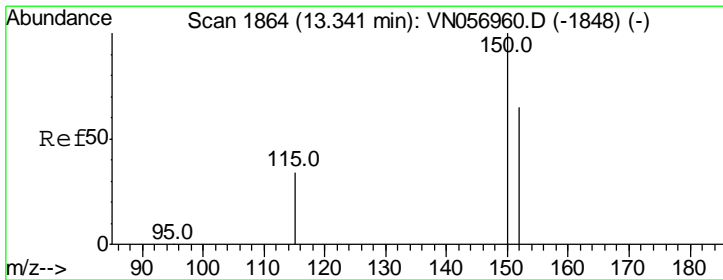
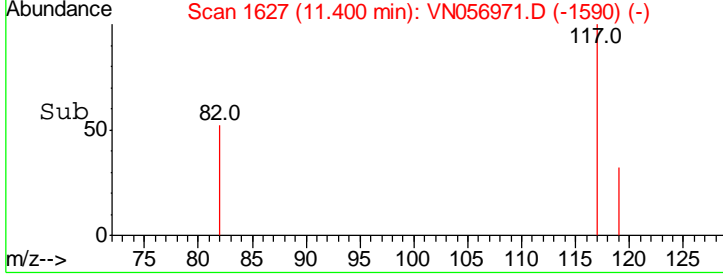
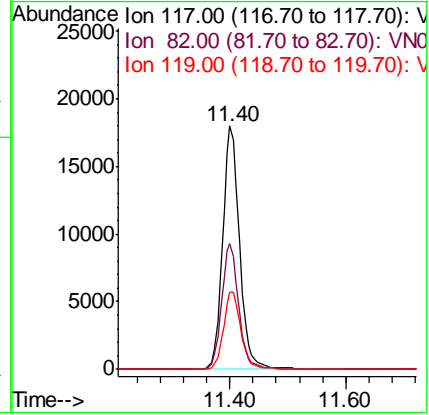
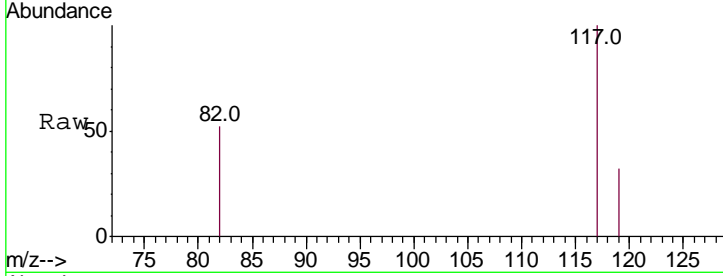




#8
 Chlorobenzene-d5
 Concen: 5.000 ug/l
 RT: 11.40 min Scan# 1627
 Delta R.T. -0.00 min
 Lab File: VN056971.D
 Acq: 30 Jul 2019 13:15

Instrument : MSVOA_N
 ClientSampleId : SU19-MSW0411

Tgt Ion	Resp	Lower	Upper
117	100		
82	51.7	40.7	61.1
119	31.8	25.6	38.4



#9
 1,4-Dichlorobenzene-d4
 Concen: 5.000 ug/l
 RT: 13.35 min Scan# 1864
 Delta R.T. 0.00 min
 Lab File: VN056971.D
 Acq: 30 Jul 2019 13:15

Tgt Ion	Resp	Lower	Upper
152	100		
115	50.5	27.0	80.8
150	148.7	0.0	306.8

