

Data Path : Z:\voasrv\HPCHEM1\MSVOA\_N\Data\VN073024\  
 Data File : VN083068.D  
 Acq On : 30 Jul 2024 15:00  
 Operator : JC\MD  
 Sample : P3395-01  
 Misc : 5.0mL/MSVOA\_N/WATER  
 ALS Vial : 9 Sample Multiplier: 1

Instrument :  
 MSVOA\_N  
 ClientSampleId :

Quant Time: Jul 30 16:11:04 2024  
 Quant Method : Z:\voasrv\HPCHEM1\MSVOA\_N\methods\82N070824W.M  
 Quant Title : SW846 8260  
 QLast Update : Mon Jul 08 13:46:04 2024  
 Response via : Initial Calibration

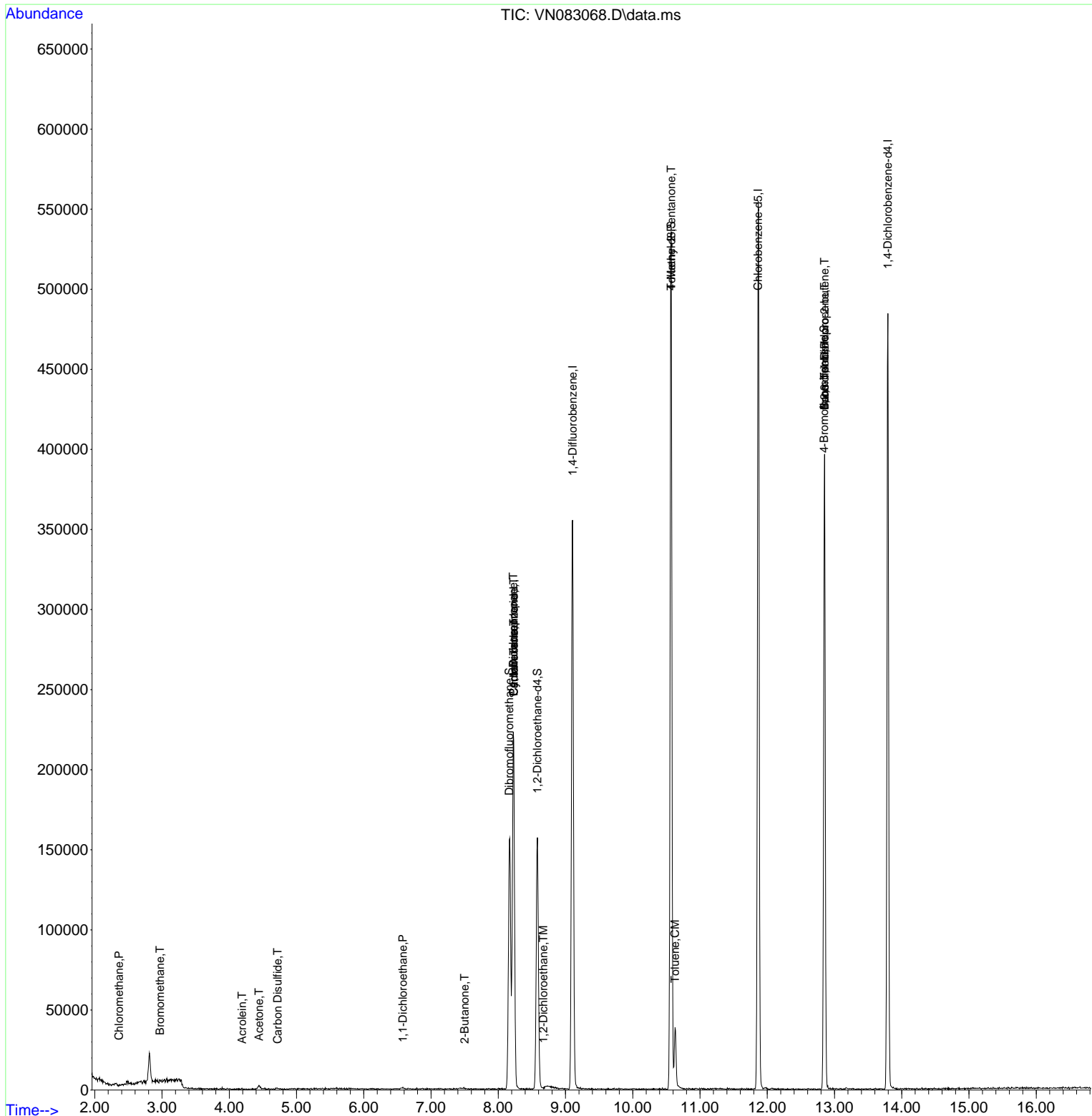
Compound	R.T.	QIon	Response	Conc	Units	Dev(Min)
Internal Standards						
1) Pentafluorobenzene	8.230	168	155162	50.000	ug/l	0.00
34) 1,4-Difluorobenzene	9.106	114	299424	50.000	ug/l	0.00
63) Chlorobenzene-d5	11.865	117	313527	50.000	ug/l	0.00
72) 1,4-Dichlorobenzene-d4	13.794	152	123582	50.000	ug/l	0.00
System Monitoring Compounds						
33) 1,2-Dichloroethane-d4	8.582	65	129477	59.528	ug/l	0.00
Spiked Amount	50.000	Range 74 - 125	Recovery	=	119.060%	
35) Dibromofluoromethane	8.165	113	111355	57.957	ug/l	0.00
Spiked Amount	50.000	Range 75 - 124	Recovery	=	115.920%	
50) Toluene-d8	10.571	98	362087	51.024	ug/l	0.00
Spiked Amount	50.000	Range 86 - 113	Recovery	=	102.040%	
62) 4-Bromofluorobenzene	12.847	95	119966	47.062	ug/l	0.00
Spiked Amount	50.000	Range 64 - 133	Recovery	=	94.120%	
Target Compounds						
						Qvalue
3) Chloromethane	2.359	50	384	0.202	ug/l #	1
5) Bromomethane	2.971	94	763	0.529	ug/l #	80
13) Acrolein	4.189	56	58	0.220	ug/l #	39
16) Acetone	4.442	43	4319	5.640	ug/l #	65
17) Carbon Disulfide	4.718	76	1285	0.271	ug/l #	75
24) 1,1-Dichloroethane	6.583	63	1436	0.458	ug/l #	83
25) 2-Butanone	7.500	43	514	0.445	ug/l #	53
31) Cyclohexane	8.230	56	4883	1.717	ug/l #	51
36) 1,1-Dichloropropene	8.224	75	14531	5.485	ug/l #	51
38) Carbon Tetrachloride	8.230	117	17310	5.427	ug/l #	16
42) 1,2-Dichloroethane	8.671	62	794	0.271	ug/l #	78
43) Isopropyl Acetate	8.700	43	1268	Below Cal	#	60
51) 4-Methyl-2-Pentanone	10.571	43	1531	0.573	ug/l #	1
52) Toluene	10.629	92	15893	3.122	ug/l	94
71) Bromoform	12.853	173	1073	0.571	ug/l #	1
76) 1,2,3-Trichloropropane	12.853	75	69157	32.459	ug/l #	1
81) trans-1,4-Dichloro-2-b...	12.853	75	69157	63.837	ug/l #	6

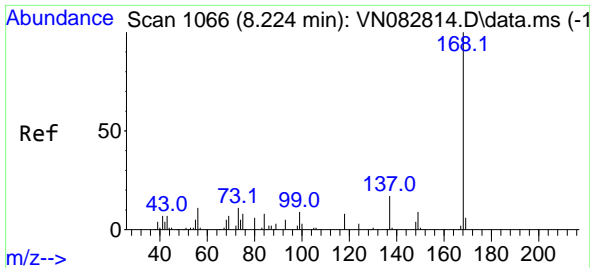
(#) = qualifier out of range (m) = manual integration (+) = signals summed

Data Path : Z:\voasrv\HPCHEM1\MSVOA\_N\Data\VN073024\  
 Data File : VN083068.D  
 Acq On : 30 Jul 2024 15:00  
 Operator : JC\MD  
 Sample : P3395-01  
 Misc : 5.0mL/MSVOA\_N/WATER  
 ALS Vial : 9 Sample Multiplier: 1

Instrument :  
 MSVOA\_N  
 ClientSampleId :

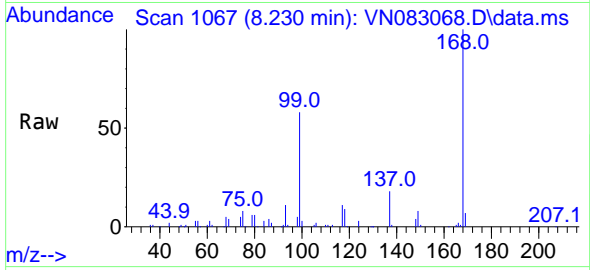
Quant Time: Jul 30 16:11:04 2024  
 Quant Method : Z:\voasrv\HPCHEM1\MSVOA\_N\methods\82N070824W.M  
 Quant Title : SW846 8260  
 QLast Update : Mon Jul 08 13:46:04 2024  
 Response via : Initial Calibration



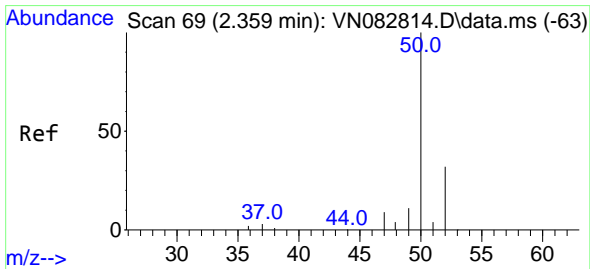
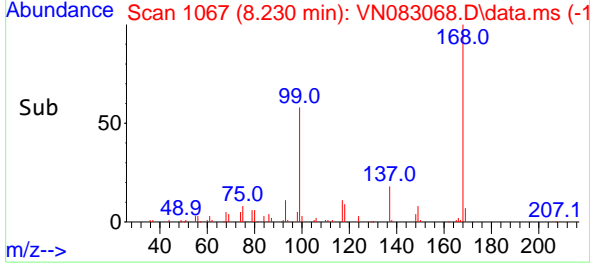
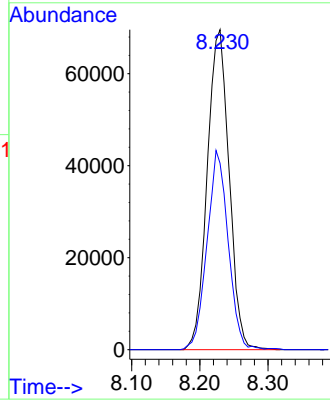


#1  
 Pentafluorobenzene  
 Concen: 50.000 ug/l  
 RT: 8.230 min Scan# 10  
 Delta R.T. 0.001 min  
 Lab File: VN083068.D  
 Acq: 30 Jul 2024 15:00

Instrument :  
 MSVOA\_N  
 ClientSampleId :

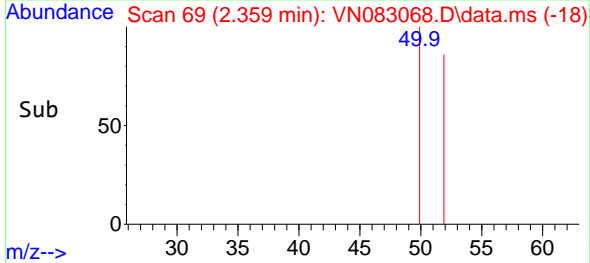
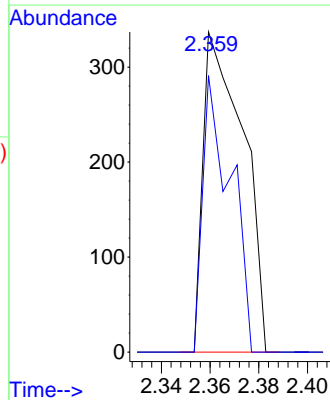
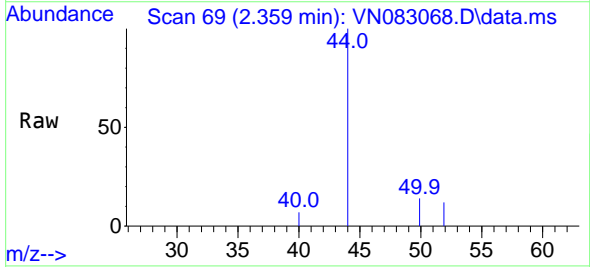


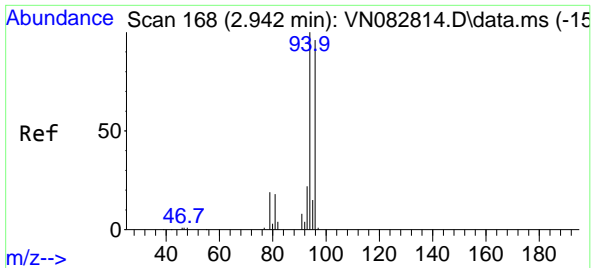
Tgt Ion:168 Resp: 155162  
 Ion Ratio Lower Upper  
 168 100  
 99 58.2 48.2 72.4



#3  
 Chloromethane  
 Concen: 0.202 ug/l  
 RT: 2.359 min Scan# 69  
 Delta R.T. 0.000 min  
 Lab File: VN083068.D  
 Acq: 30 Jul 2024 15:00

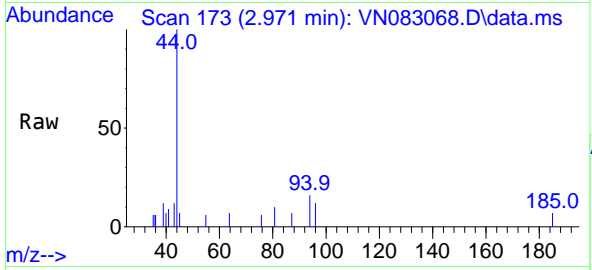
Tgt Ion: 50 Resp: 384  
 Ion Ratio Lower Upper  
 50 100  
 52 86.4 25.0 37.4#



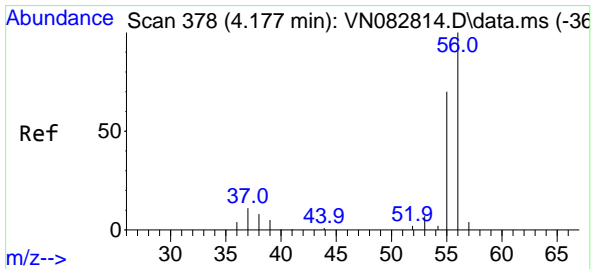
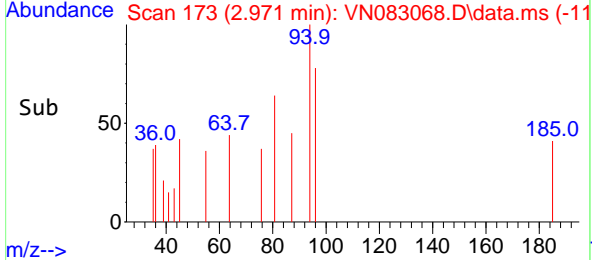
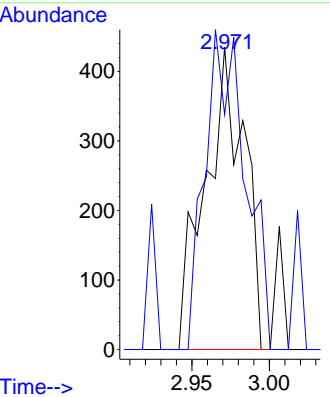


#5  
 Bromomethane  
 Concen: 0.529 ug/l  
 RT: 2.971 min Scan# 11  
 Delta R.T. 0.024 min  
 Lab File: VN083068.D  
 Acq: 30 Jul 2024 15:00

Instrument : MSVOA\_N  
 ClientSampleId :

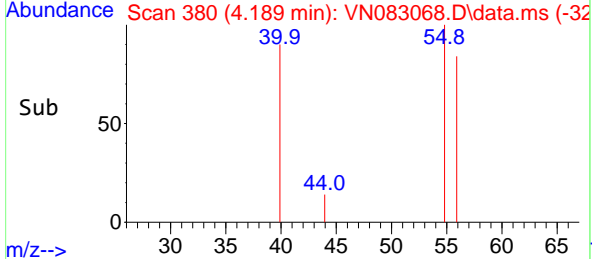
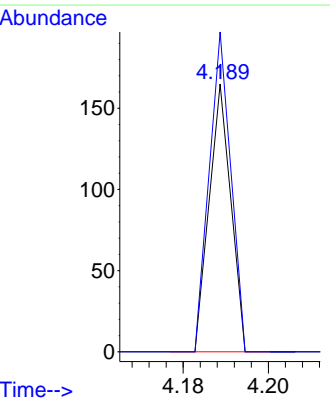
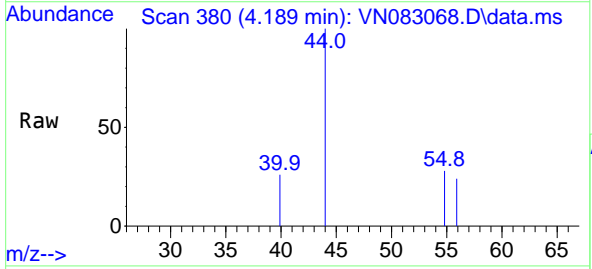


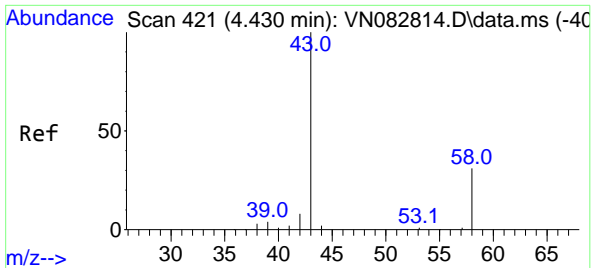
Tgt Ion: 94 Resp: 763  
 Ion Ratio Lower Upper  
 94 100  
 96 77.7 78.0 117.0#



#13  
 Acrolein  
 Concen: 0.220 ug/l  
 RT: 4.189 min Scan# 380  
 Delta R.T. 0.012 min  
 Lab File: VN083068.D  
 Acq: 30 Jul 2024 15:00

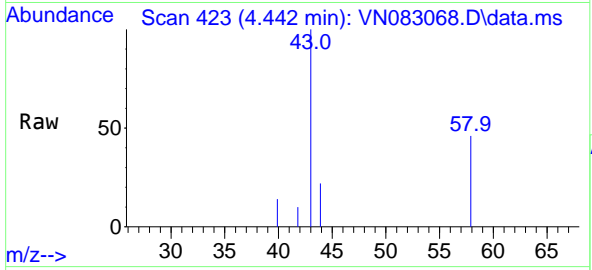
Tgt Ion: 56 Resp: 58  
 Ion Ratio Lower Upper  
 56 100  
 55 120.7 56.4 84.6#



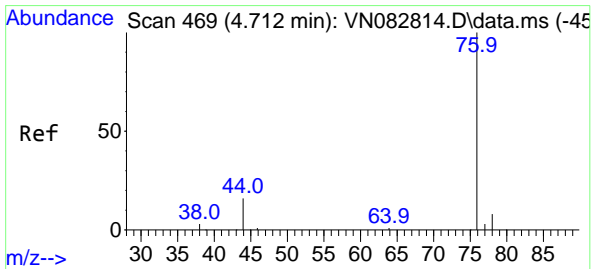
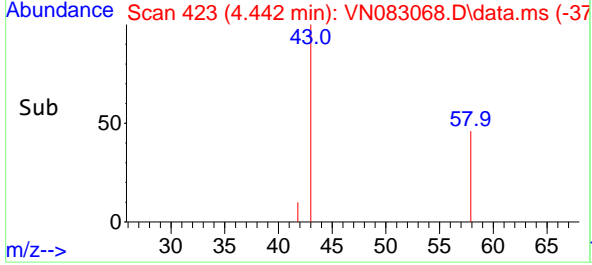
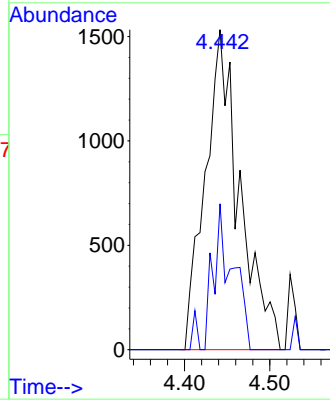


#16  
 Acetone  
 Concen: 5.640 ug/l  
 RT: 4.442 min Scan# 41  
 Delta R.T. 0.012 min  
 Lab File: VN083068.D  
 Acq: 30 Jul 2024 15:00

Instrument :  
 MSVOA\_N  
 ClientSampleId :

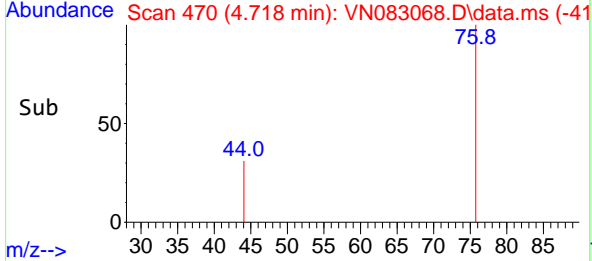
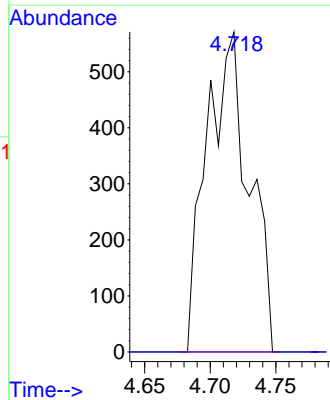
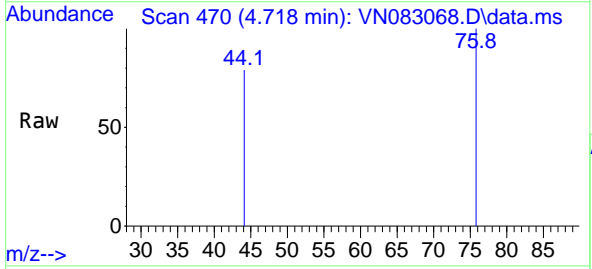


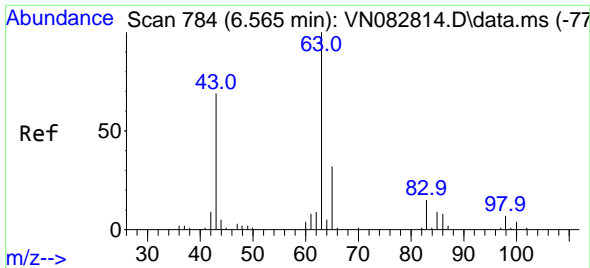
Tgt Ion: 43 Resp: 4319  
 Ion Ratio Lower Upper  
 43 100  
 58 45.6 21.8 32.6#



#17  
 Carbon Disulfide  
 Concen: 0.271 ug/l  
 RT: 4.718 min Scan# 470  
 Delta R.T. 0.006 min  
 Lab File: VN083068.D  
 Acq: 30 Jul 2024 15:00

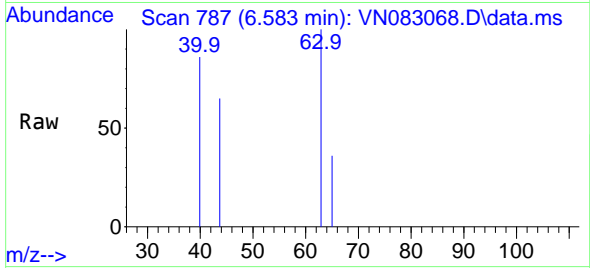
Tgt Ion: 76 Resp: 1285  
 Ion Ratio Lower Upper  
 76 100  
 78 0.0 7.2 10.8#



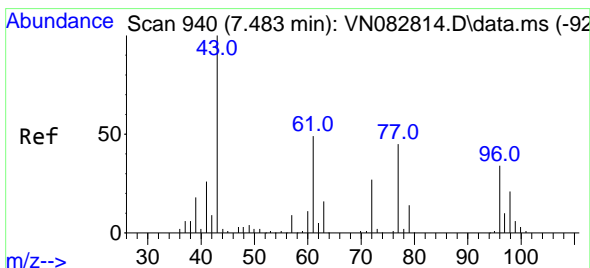
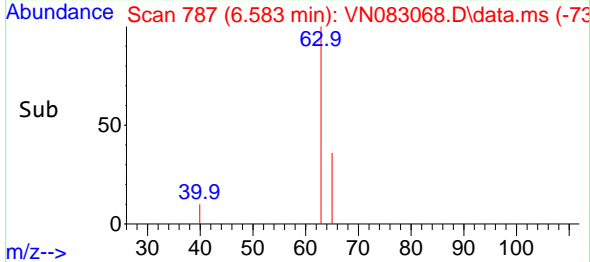
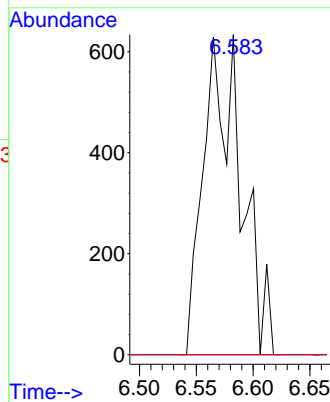


#24  
 1,1-Dichloroethane  
 Concen: 0.458 ug/l  
 RT: 6.583 min Scan# 71  
 Delta R.T. 0.012 min  
 Lab File: VN083068.D  
 Acq: 30 Jul 2024 15:00

Instrument :  
 MSVOA\_N  
 ClientSampleId :

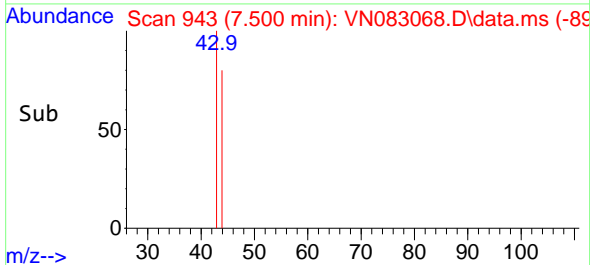
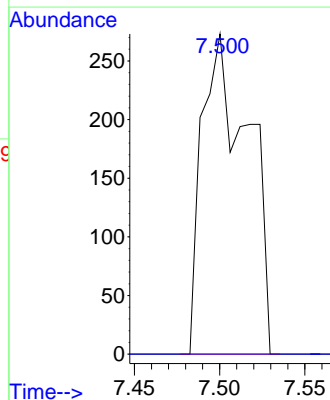
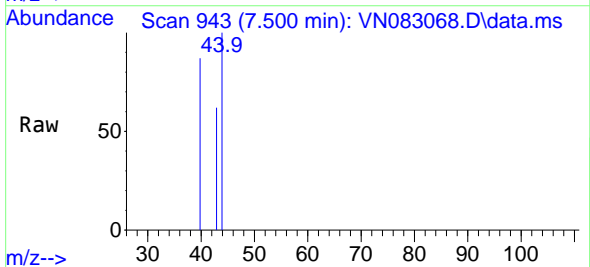


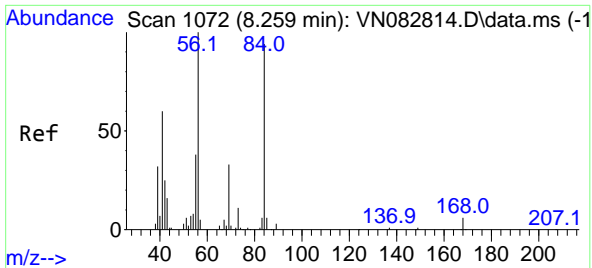
Tgt Ion: 63 Resp: 1436  
 Ion Ratio Lower Upper  
 63 100  
 98 0.0 3.3 9.9#  
 100 0.0 2.0 6.0#



#25  
 2-Butanone  
 Concen: 0.445 ug/l  
 RT: 7.500 min Scan# 943  
 Delta R.T. 0.012 min  
 Lab File: VN083068.D  
 Acq: 30 Jul 2024 15:00

Tgt Ion: 43 Resp: 514  
 Ion Ratio Lower Upper  
 43 100  
 72 0.0 18.2 27.2#

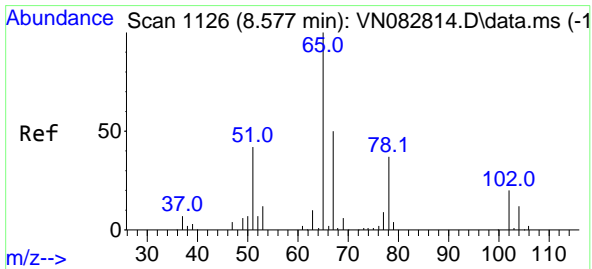
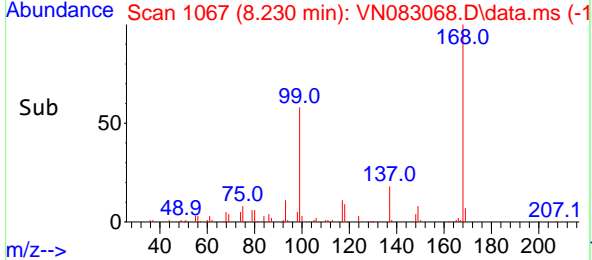
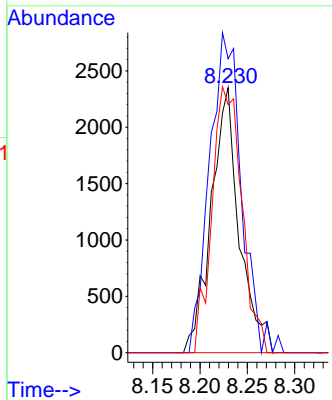
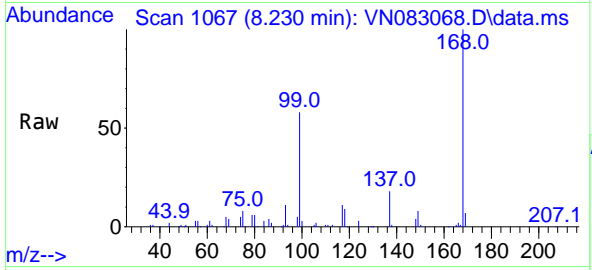




#31  
 Cyclohexane  
 Concen: 1.717 ug/l  
 RT: 8.230 min Scan# 1072  
 Delta R.T. -0.029 min  
 Lab File: VN083068.D  
 Acq: 30 Jul 2024 15:00

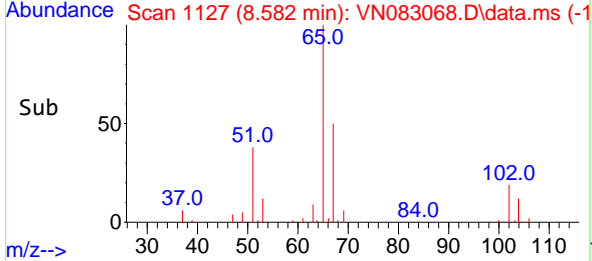
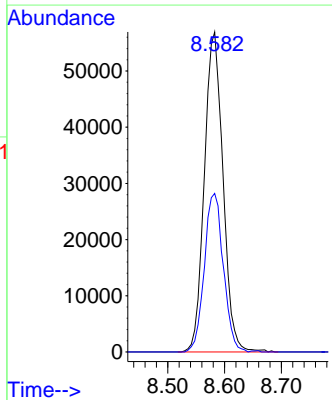
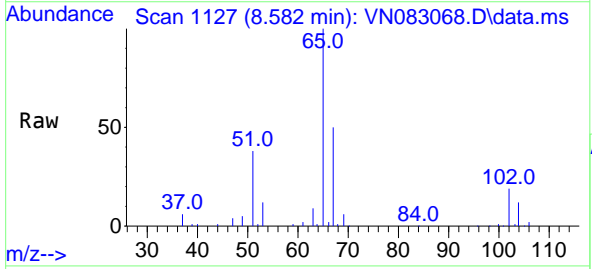
Instrument : MSVOA\_N  
 ClientSampleId :

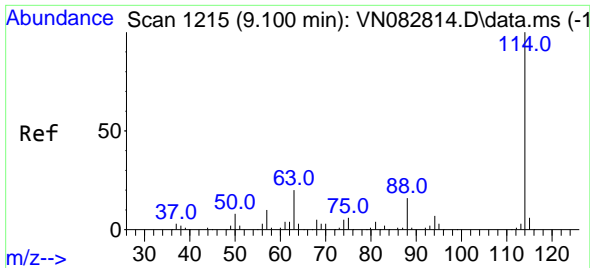
Tgt Ion	Resp	Lower	Upper
56	4883		
69	110.9	24.5	36.7#
84	93.6	66.0	99.0



#33  
 1,2-Dichloroethane-d4  
 Concen: 59.528 ug/l  
 RT: 8.582 min Scan# 1127  
 Delta R.T. 0.000 min  
 Lab File: VN083068.D  
 Acq: 30 Jul 2024 15:00

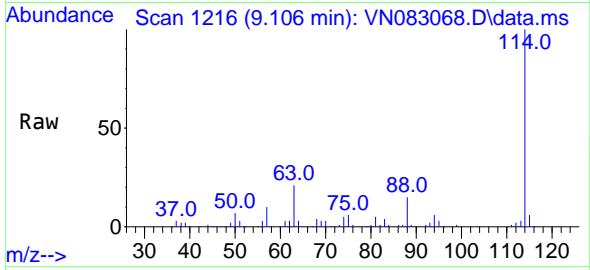
Tgt Ion	Resp	Lower	Upper
65	129477		
67	50.5	0.0	104.4



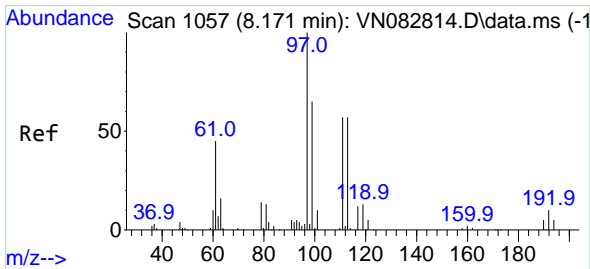
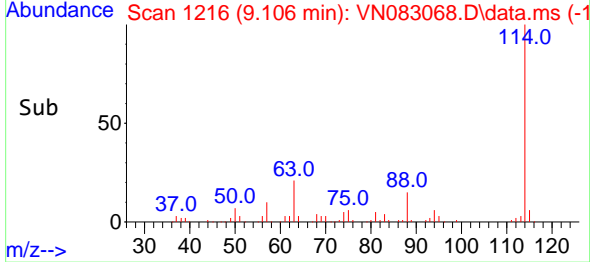
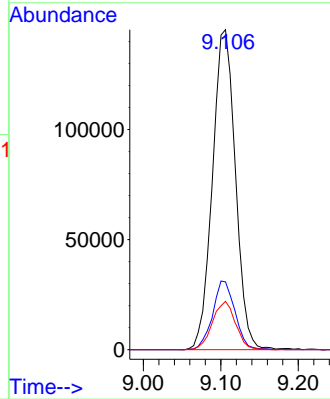


#34  
 1,4-Difluorobenzene  
 Concen: 50.000 ug/l  
 RT: 9.106 min Scan# 11  
 Delta R.T. -0.000 min  
 Lab File: VN083068.D  
 Acq: 30 Jul 2024 15:00

Instrument : MSVOA\_N  
 ClientSampleId :

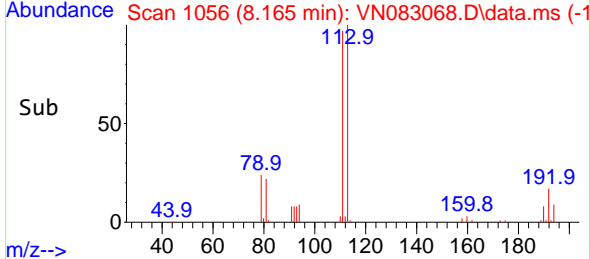
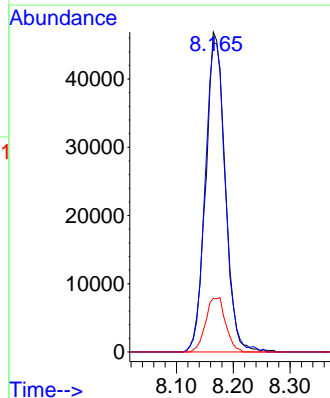
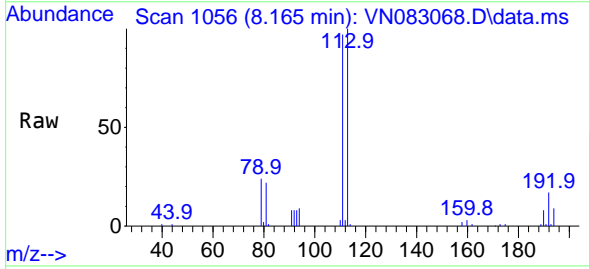


Tgt Ion:114 Resp: 299424  
 Ion Ratio Lower Upper  
 114 100  
 63 21.2 0.0 44.6  
 88 15.1 0.0 31.4

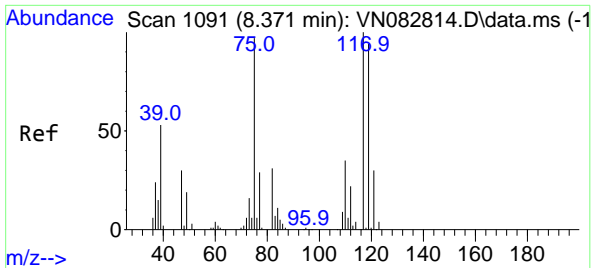


#35  
 Dibromofluoromethane  
 Concen: 57.957 ug/l  
 RT: 8.165 min Scan# 1056  
 Delta R.T. -0.000 min  
 Lab File: VN083068.D  
 Acq: 30 Jul 2024 15:00

Tgt Ion:113 Resp: 111355  
 Ion Ratio Lower Upper  
 113 100  
 111 100.2 82.4 123.6  
 192 17.3 14.9 22.3

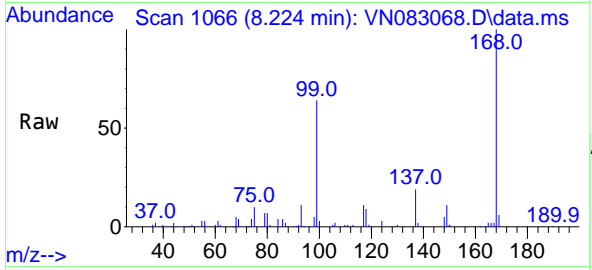






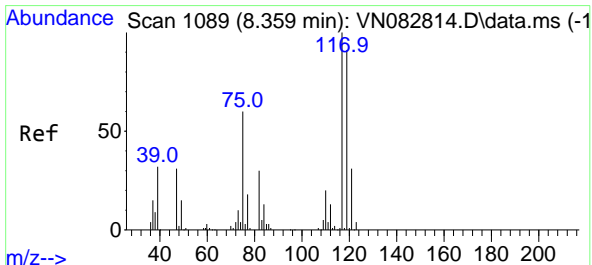
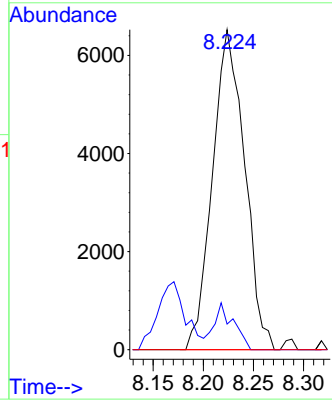
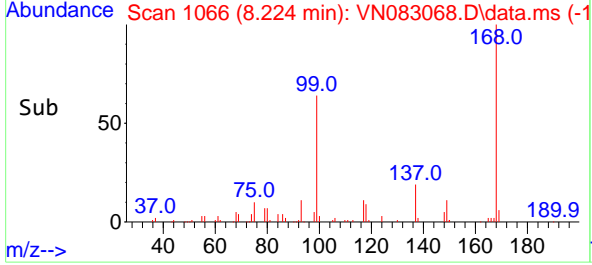
#36  
 1,1-Dichloropropene  
 Concen: 5.485 ug/l  
 RT: 8.224 min Scan# 1066  
 Delta R.T. -0.147 min  
 Lab File: VN083068.D  
 Acq: 30 Jul 2024 15:00

Instrument : MSVOA\_N  
 ClientSampleId :

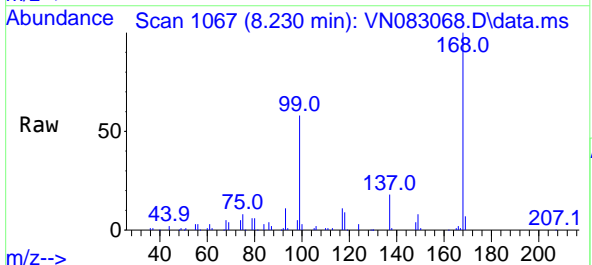


Tgt Ion: 75 Resp: 14531

Ion	Ratio	Lower	Upper
75	100		
110	8.8	16.3	48.9#
77	0.0	24.6	37.0#

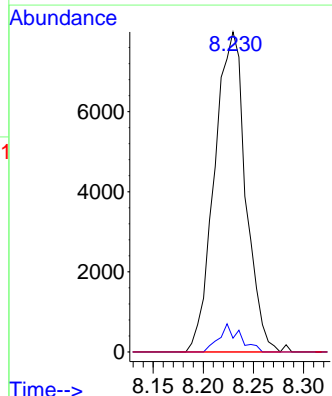
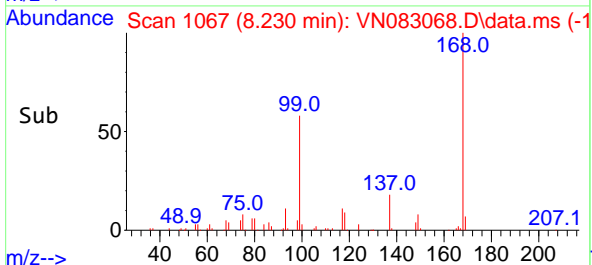


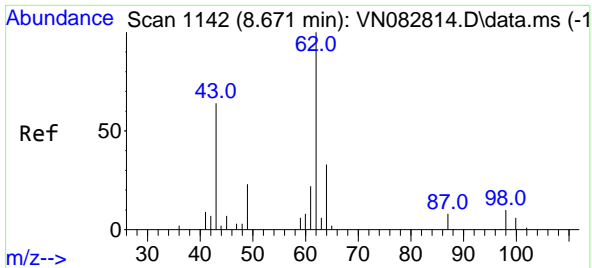
#38  
 Carbon Tetrachloride  
 Concen: 5.427 ug/l  
 RT: 8.230 min Scan# 1067  
 Delta R.T. -0.135 min  
 Lab File: VN083068.D  
 Acq: 30 Jul 2024 15:00



Tgt Ion: 117 Resp: 17310

Ion	Ratio	Lower	Upper
117	100		
119	4.3	74.9	112.3#
121	0.0	24.3	36.5#

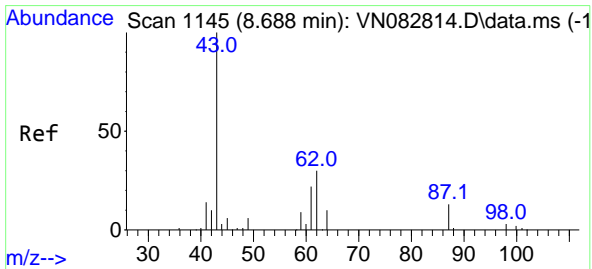
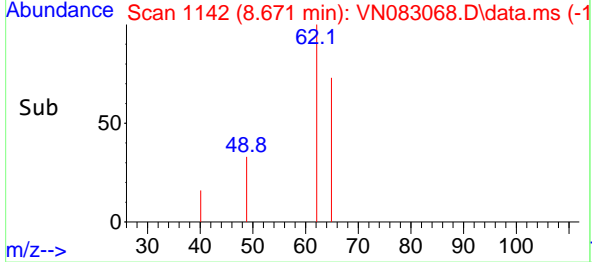
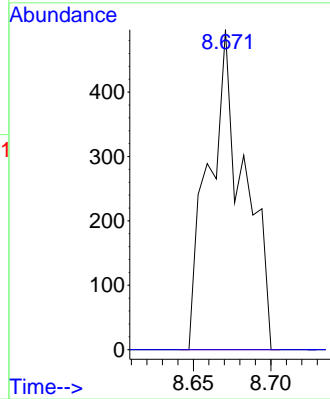
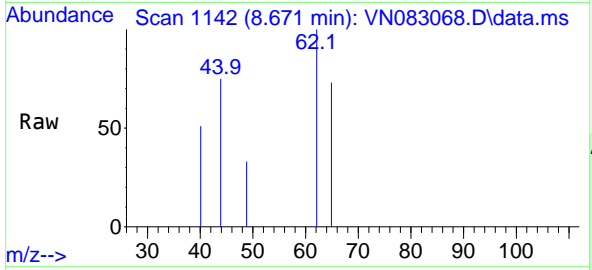




#42  
 1,2-Dichloroethane  
 Concen: 0.271 ug/l  
 RT: 8.671 min Scan# 1142  
 Delta R.T. -0.000 min  
 Lab File: VN083068.D  
 Acq: 30 Jul 2024 15:00

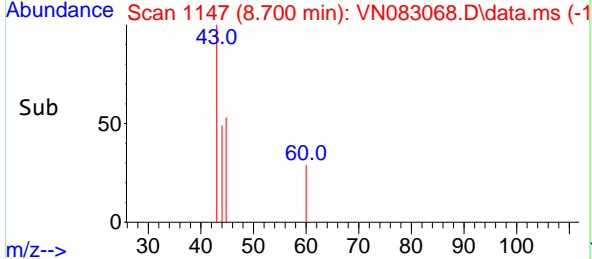
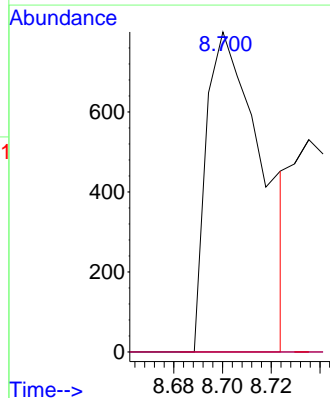
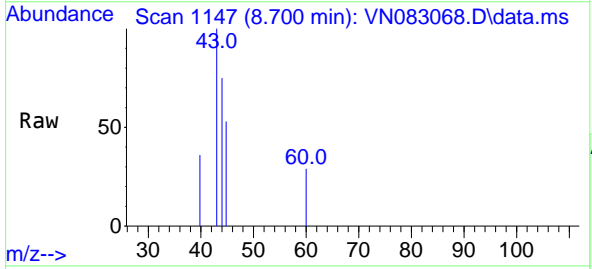
Instrument :  
 MSVOA\_N  
 ClientSampleId :

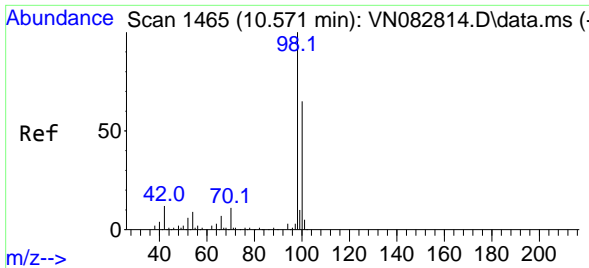
Tgt Ion: 62 Resp: 794  
 Ion Ratio Lower Upper  
 62 100  
 98 0.0 0.0 15.8



#43  
 Isopropyl Acetate  
 Concen: Below Cal  
 RT: 8.700 min Scan# 1147  
 Delta R.T. 0.006 min  
 Lab File: VN083068.D  
 Acq: 30 Jul 2024 15:00

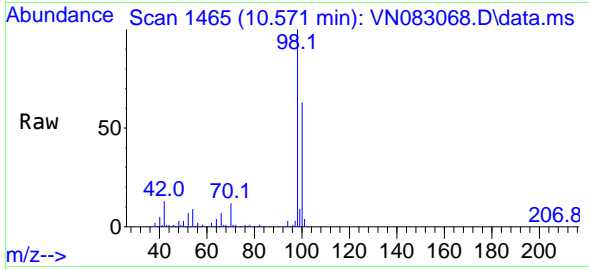
Tgt Ion: 43 Resp: 1268  
 Ion Ratio Lower Upper  
 43 100  
 61 0.0 17.8 26.6#  
 87 0.0 8.2 12.2#



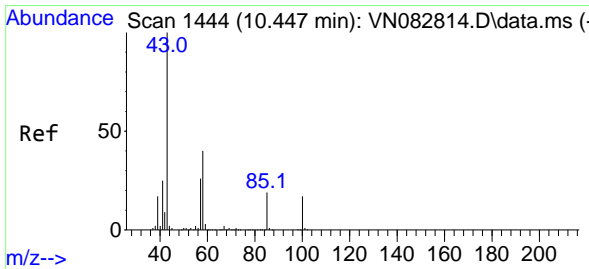
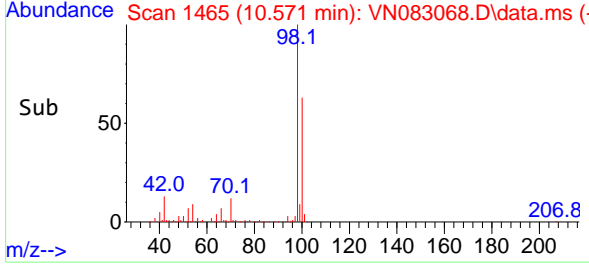
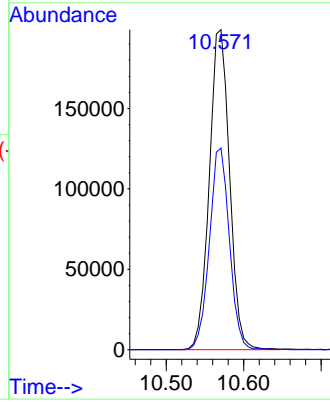


#50  
 Toluene-d8  
 Concen: 51.024 ug/l  
 RT: 10.571 min Scan# 1465  
 Delta R.T. 0.001 min  
 Lab File: VN083068.D  
 Acq: 30 Jul 2024 15:00

Instrument : MSVOA\_N  
 ClientSampleId :

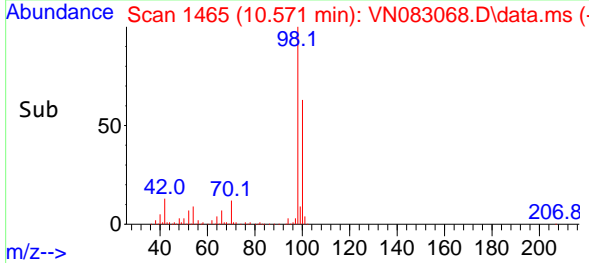
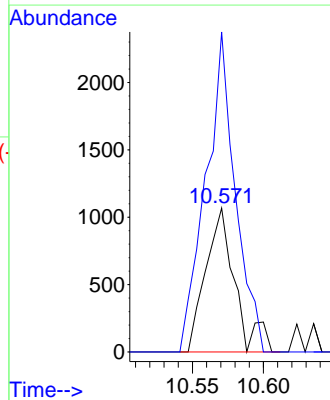
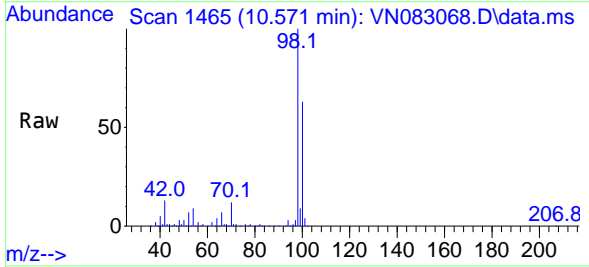


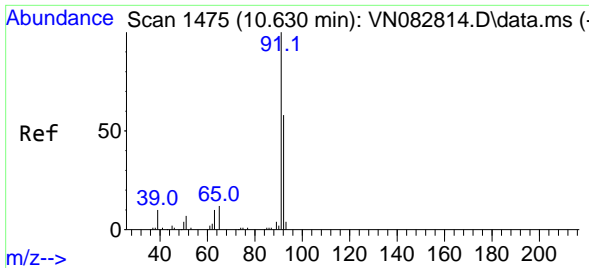
Tgt Ion: 98 Resp: 362087  
 Ion Ratio Lower Upper  
 98 100  
 100 62.1 51.5 77.3



#51  
 4-Methyl-2-Pentanone  
 Concen: 0.573 ug/l  
 RT: 10.571 min Scan# 1465  
 Delta R.T. 0.124 min  
 Lab File: VN083068.D  
 Acq: 30 Jul 2024 15:00

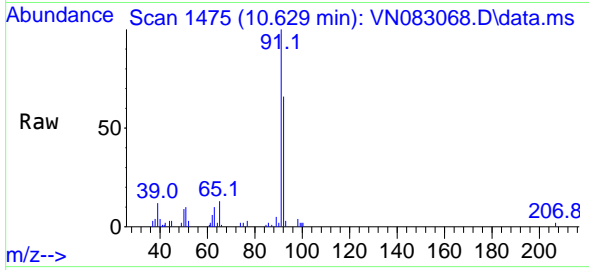
Tgt Ion: 43 Resp: 1531  
 Ion Ratio Lower Upper  
 43 100  
 58 224.4 28.2 42.4#



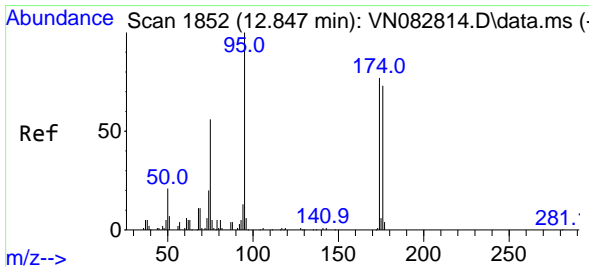
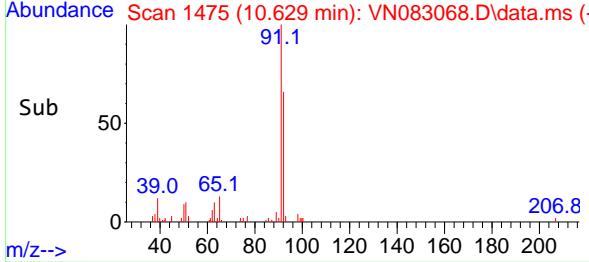
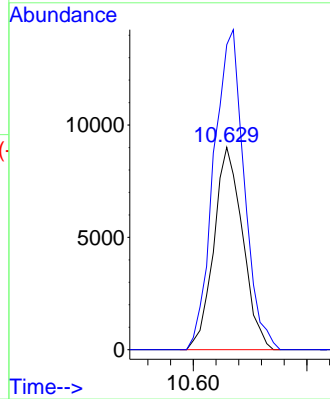


#52  
 Toluene  
 Concen: 3.122 ug/l  
 RT: 10.629 min Scan# 1475  
 Delta R.T. -0.006 min  
 Lab File: VN083068.D  
 Acq: 30 Jul 2024 15:00

Instrument : MSVOA\_N  
 ClientSampled :

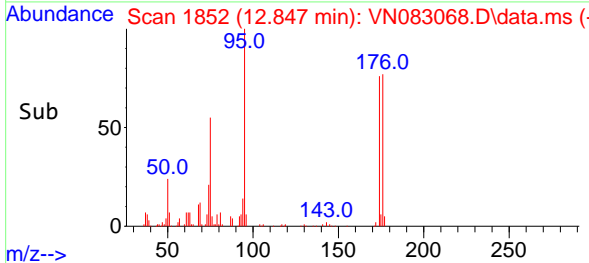
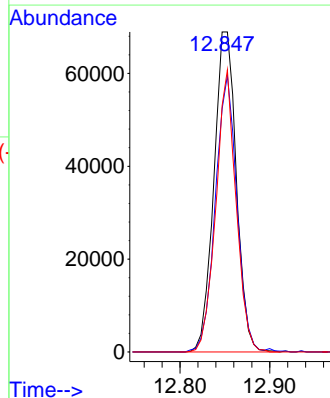
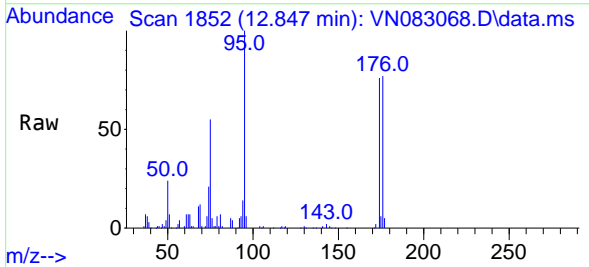


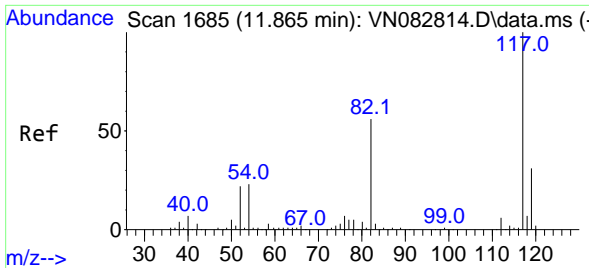
Tgt Ion: 92 Resp: 15893  
 Ion Ratio Lower Upper  
 92 100  
 91 166.5 139.4 209.0



#62  
 4-Bromofluorobenzene  
 Concen: 47.062 ug/l  
 RT: 12.847 min Scan# 1852  
 Delta R.T. -0.000 min  
 Lab File: VN083068.D  
 Acq: 30 Jul 2024 15:00

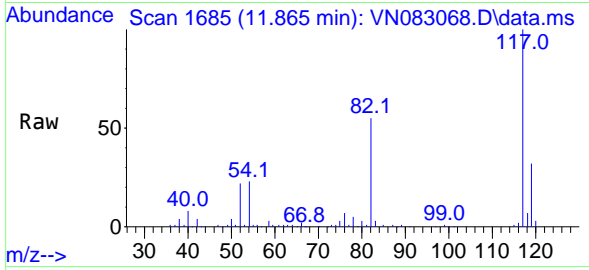
Tgt Ion: 95 Resp: 119966  
 Ion Ratio Lower Upper  
 95 100  
 174 82.9 0.0 159.2  
 176 79.0 0.0 147.6



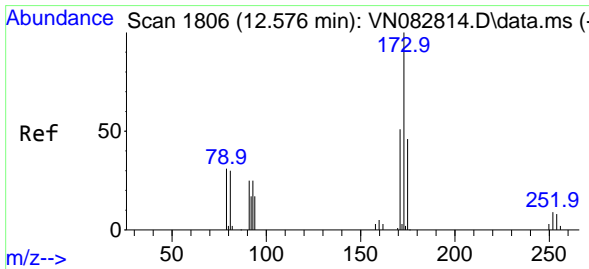
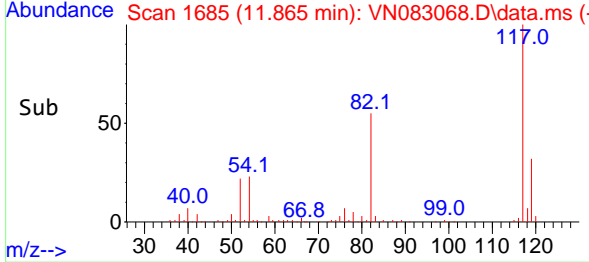
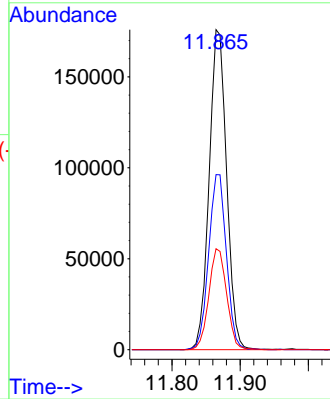


#63  
 Chlorobenzene-d5  
 Concen: 50.000 ug/l  
 RT: 11.865 min Scan# 1177  
 Delta R.T. -0.005 min  
 Lab File: VN083068.D  
 Acq: 30 Jul 2024 15:00

Instrument : MSVOA\_N  
 ClientSampleId :

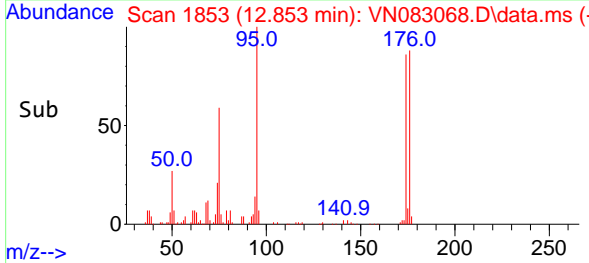
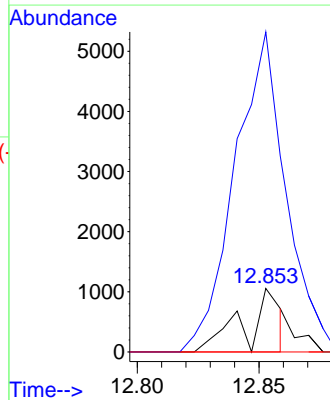
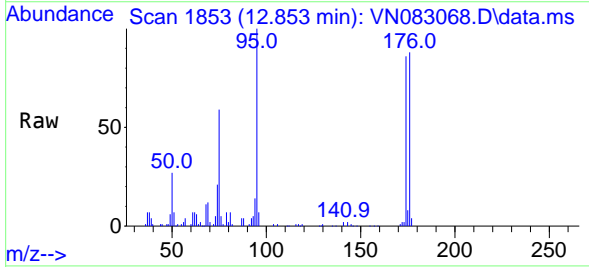


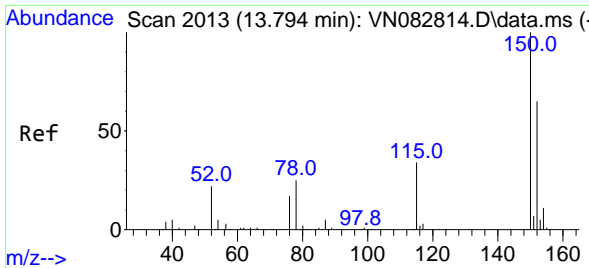
Tgt Ion:117 Resp: 313527  
 Ion Ratio Lower Upper  
 117 100  
 82 54.7 47.5 71.3  
 119 31.5 25.6 38.4



#71  
 Bromoform  
 Concen: 0.571 ug/l  
 RT: 12.853 min Scan# 1853  
 Delta R.T. 0.271 min  
 Lab File: VN083068.D  
 Acq: 30 Jul 2024 15:00

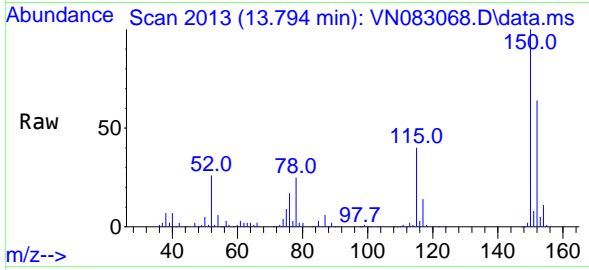
Tgt Ion:173 Resp: 1073  
 Ion Ratio Lower Upper  
 173 100  
 175 621.9 24.0 72.0#  
 254 0.0 0.0 0.0



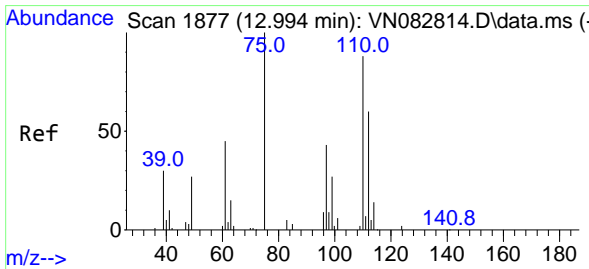
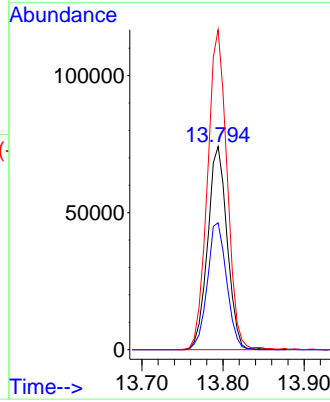
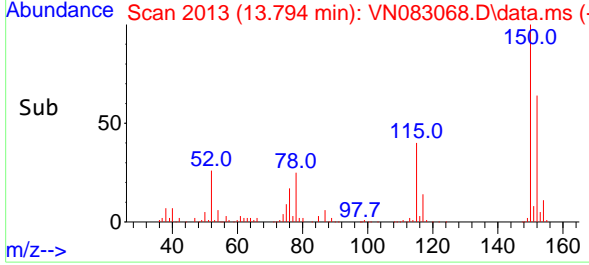


#72  
 1,4-Dichlorobenzene-d4  
 Concen: 50.000 ug/l  
 RT: 13.794 min Scan# 20  
 Delta R.T. -0.000 min  
 Lab File: VN083068.D  
 Acq: 30 Jul 2024 15:00

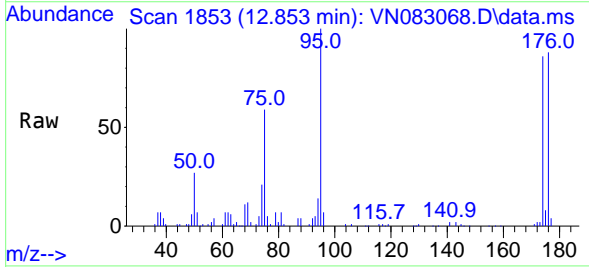
Instrument : MSVOA\_N  
 ClientSampleId :



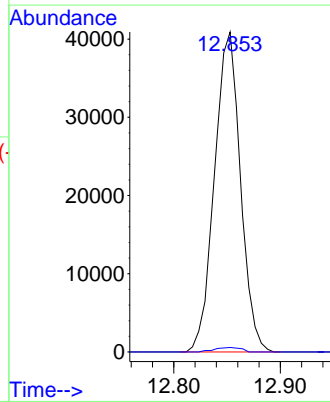
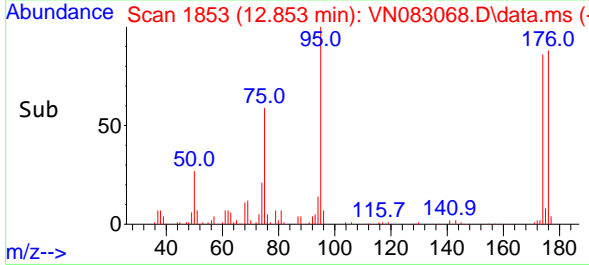
Tgt Ion:152 Resp: 123582  
 Ion Ratio Lower Upper  
 152 100  
 115 61.9 30.6 91.6  
 150 157.7 0.0 348.6

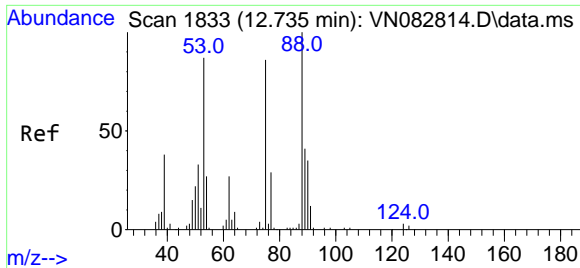


#76  
 1,2,3-Trichloropropane  
 Concen: 32.459 ug/l  
 RT: 12.853 min Scan# 1853  
 Delta R.T. -0.141 min  
 Lab File: VN083068.D  
 Acq: 30 Jul 2024 15:00



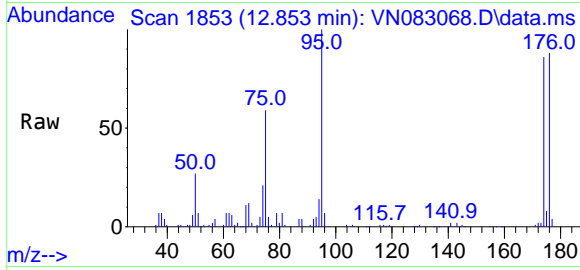
Tgt Ion: 75 Resp: 69157  
 Ion Ratio Lower Upper  
 75 100  
 77 1.4 110.9 332.6#





#81  
 trans-1,4-Dichloro-2-butene  
 Concen: 63.837 ug/l  
 RT: 12.853 min Scan# 11  
 Delta R.T. 0.112 min  
 Lab File: VN083068.D  
 Acq: 30 Jul 2024 15:00

Instrument :  
 MSVOA\_N  
 ClientSampleId :



Tgt Ion: 75 Resp: 69157

Ion	Ratio	Lower	Upper
75	100		
53	0.3	88.4	132.6#
89	0.0	36.3	54.5#

