

Data Path : Z:\VOASRV\HPCHEM1\MSVOA N\DATA\VN080118\
 Data File : VN050245.D
 Acq On : 1 Aug 2018 13:30
 Operator : MD\SY
 Sample : J4256-09
 Misc : 5.00mL/MSVOA N/WATER
 ALS Vial : 14 Sample Multiplier: 1

Instrument :
 MSVOA_N
 ClientSampled :
 MW-09

Quant Time: Aug 02 00:53:42 2018
 Quant Method : Z:\VOASRV\HPCHEM1\MSVOA_N\METHODS\82N072418W.M
 Quant Title : SW846 8260
 QLast Update : Thu Jul 26 18:10:10 2018
 Response via : Initial Calibration

Internal Standards	R.T.	QIon	Response	Conc	Units	Dev(Min)
1) Pentafluorobenzene	7.67	168	671913	50.00	ug/l	0.00
34) 1,4-Difluorobenzene	8.59	114	1091985	50.00	ug/l	0.00
63) Chlorobenzene-d5	11.41	117	934624	50.00	ug/l	0.00
72) 1,4-Dichlorobenzene-d4	13.35	152	423715	50.00	ug/l	0.00

System Monitoring Compounds

33) 1,2-Dichloroethane-d4	8.03	65	467083	49.82	ug/l	0.00
Spiked Amount	50.000		Recovery	=	99.64%	
35) Dibromofluoromethane	7.60	113	417403	46.82	ug/l	0.00
Spiked Amount	50.000		Recovery	=	93.64%	
50) Toluene-d8	10.09	98	1489650	45.45	ug/l	0.00
Spiked Amount	50.000		Recovery	=	90.90%	
62) 4-Bromofluorobenzene	12.40	95	468793	43.43	ug/l	0.00
Spiked Amount	50.000		Recovery	=	86.86%	

Target Compounds

						Qvalue
5) Bromomethane	2.57	94	410	Below Cal	#	29
11) Tert butyl alcohol	4.81	59	1435	2.08	ug/l	# 72
16) Acetone	3.83	43	26419	7.76	ug/l	91
17) Carbon Disulfide	4.05	76	13129	0.55	ug/l	99
18) Methyl Acetate	4.35	43	11942	Below Cal	#	85
19) Methyl tert-butyl Ether	5.05	73	7938	0.38	ug/l	99
20) Methylene Chloride	4.55	84	1328	Below Cal	#	94
25) 2-Butanone	6.86	43	2654	0.74	ug/l	# 48
31) Cyclohexane	7.66	56	13855	1.01	ug/l	# 1
36) 1,1-Dichloropropene	7.67	75	46767	3.80	ug/l	# 48
38) Carbon Tetrachloride	7.67	117	61096	4.68	ug/l	# 16
39) Methylcyclohexane	9.08	83	6621	0.52	ug/l	92
41) Methacrylonitrile	7.16	41	30	2.75	ug/l	# 10
43) Isopropyl Acetate	8.24	43	184701	10.53	ug/l	# 61
51) 4-Methyl-2-Pentanone	10.09	43	7047	0.84	ug/l	# 1
55) 1,1,2-Trichloroethane	10.53	97	10343	1.18	ug/l	# 19
56) Ethyl methacrylate	10.43	69	5548	2.48	ug/l	# 1
59) 2-Hexanone	10.61	43	7265	6.32	ug/l	64
69) o-Xylene	11.95	106	6846	0.50	ug/l	69
70) Styrene	11.96	104	650	0.95	ug/l	# 1
71) Bromoform	12.40	173	1796	0.27	ug/l	# 1
73) Isopropylbenzene	12.25	105	106607	3.24	ug/l	98
74) N-amyl acetate	12.05	43	13268	1.32	ug/l	# 77
75) 1,1,2,2-Tetrachloroethane	12.47	83	1891	Below Cal	#	25
76) 1,2,3-Trichloropropane	12.40	75	231956	29.46	ug/l	# 100
78) n-propylbenzene	12.59	91	198526	5.40	ug/l	99
79) 2-Chlorotoluene	12.59	91	198526	8.72	ug/l	# 40
80) 1,3,5-Trimethylbenzene	12.89	105	79449	3.07	ug/l	73
81) trans-1,4-Dichloro-2-buten	12.40	75	231956	93.43	ug/l	# 13
82) 4-Chlorotoluene	12.89	91	9988	0.44	ug/l	# 49
83) tert-Butylbenzene	12.99	119	9794	0.43	ug/l	96
84) 1,2,4-Trimethylbenzene	13.04	105	244415	9.38	ug/l	100
85) sec-Butylbenzene	13.17	105	152624	5.06	ug/l	83
86) p-Isopropyltoluene	13.24	119	14140	0.56	ug/l	85

Data Path : Z:\VOASRV\HPCHEM1\MSVOA N\DATA\VN080118\
 Data File : VN050245.D
 Acq On : 1 Aug 2018 13:30
 Operator : MD\SY
 Sample : J4256-09
 Misc : 5.00mL/MSVOA N/WATER
 ALS Vial : 14 Sample Multiplier: 1

Instrument :
 MSVOA_N
 ClientSampleId :
 MW-09

Quant Time: Aug 02 00:53:42 2018
 Quant Method : Z:\VOASRV\HPCHEM1\MSVOA_N\METHODS\82N072418W.M
 Quant Title : SW846 8260
 QLast Update : Thu Jul 26 18:10:10 2018
 Response via : Initial Calibration

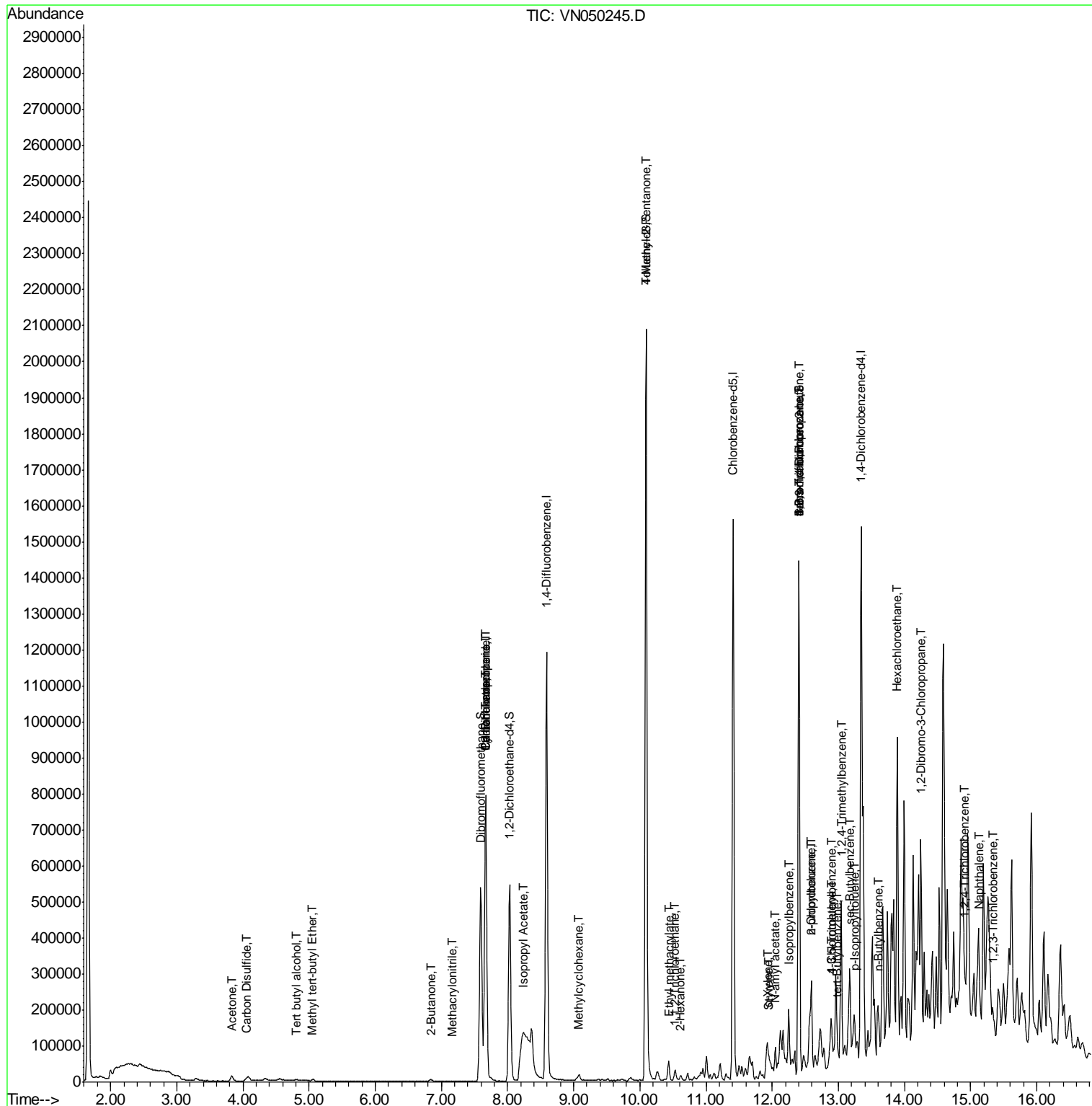
Internal Standards	R.T.	QIon	Response	Conc	Units	Dev(Min)
89) n-Butylbenzene	13.62	91	55610	2.66	ug/l #	69
90) Hexachloroethane	13.89	117	41393	7.34	ug/l #	4
92) 1,2-Dibromo-3-Chloropropan	14.25	75	2398	0.84	ug/l #	1
93) 1,2,4-Trichlorobenzene	14.91	180	1049	3.21	ug/l #	1
95) Naphthalene	15.14	128	18428	5.28	ug/l #	83
96) 1,2,3-Trichlorobenzene	15.33	180	562	2.27	ug/l #	67

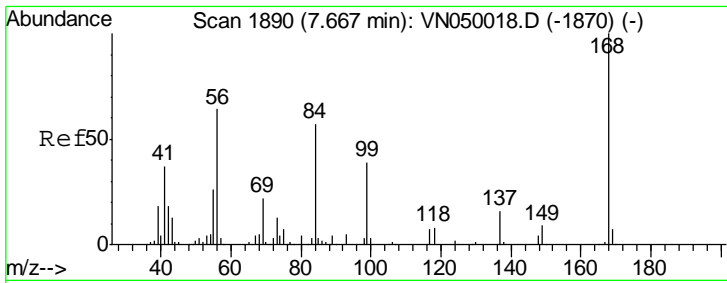
(#) = qualifier out of range (m) = manual integration (+) = signals summed

Data Path : Z:\VOASRV\HPCHEM1\MSVOA N\DATA\VN080118\
 Data File : VN050245.D
 Acq On : 1 Aug 2018 13:30
 Operator : MD\SY
 Sample : J4256-09
 Misc : 5.00mL/MSVOA N/WATER
 ALS Vial : 14 Sample Multiplier: 1

Instrument :
 MSVOA_N
 Client Sampled :
 MW-09

Quant Time: Aug 02 00:53:42 2018
 Quant Method : Z:\VOASRV\HPCHEM1\MSVOA_N\METHODS\82N072418W.M
 Quant Title : SW846 8260
 QLast Update : Thu Jul 26 18:10:10 2018
 Response via : Initial Calibration

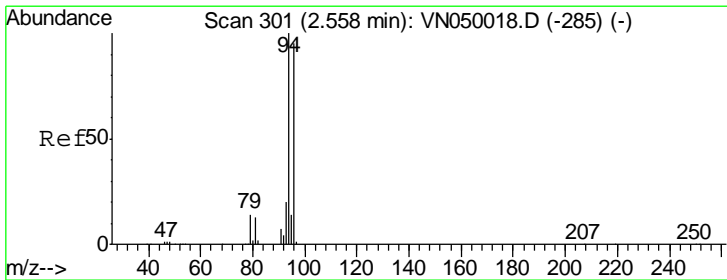
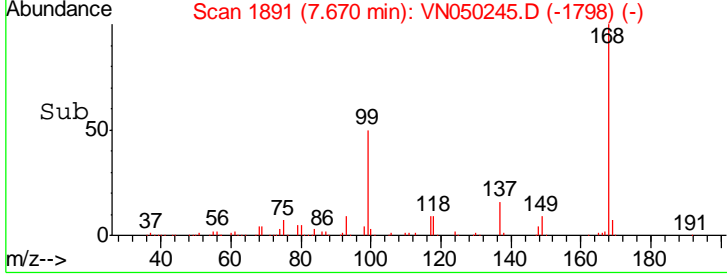
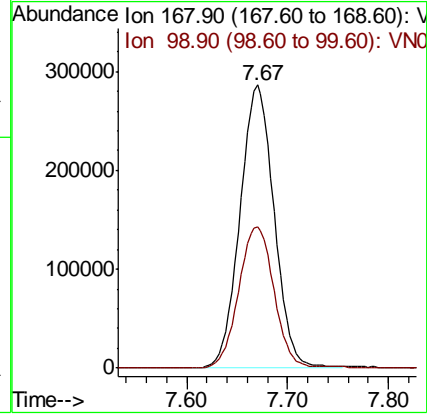
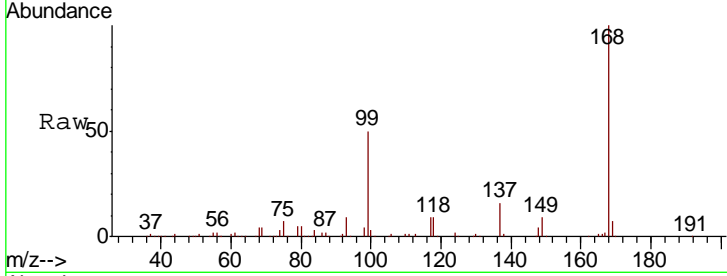




#1
 Pentafluorobenzene
 Concen: 50.00 ug/l
 RT: 7.67 min Scan# 1891
 Delta R.T. 0.00 min
 Lab File: VN050245.D
 Acq: 1 Aug 2018 13:30

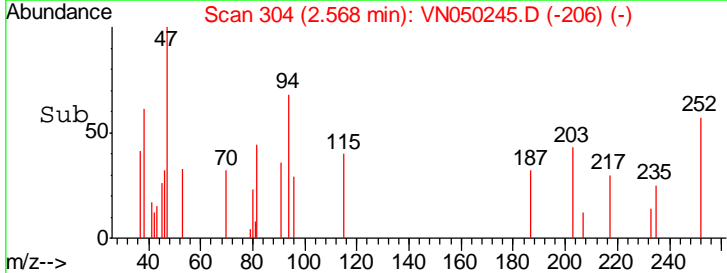
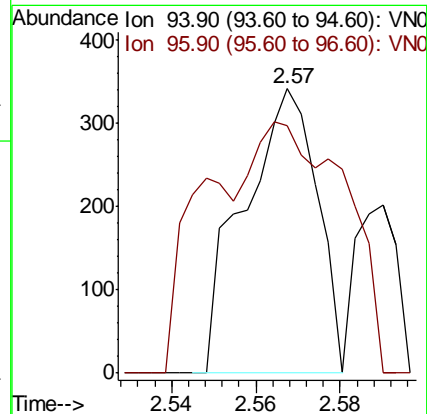
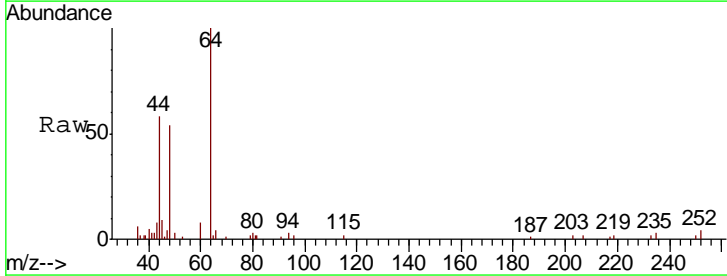
Instrument :
 MSVOA_N
 ClientSampled :
 MW-09

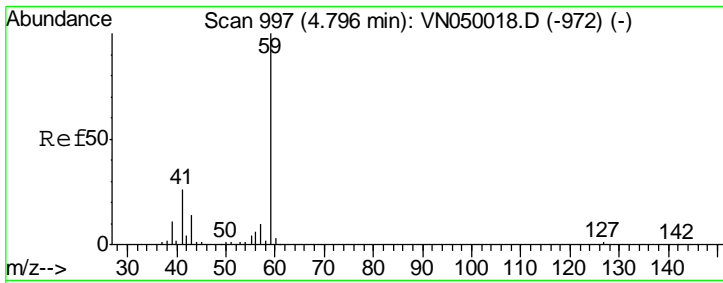
Tot Ion: 168 Resp: 671913
 Ion Ratio Lower Upper
 168 100
 99 50.0 40.0 60.0



#5
 Bromomethane
 Concen: Below Cal
 RT: 2.57 min Scan# 304
 Delta R.T. 0.02 min
 Lab File: VN050245.D
 Acq: 1 Aug 2018 13:30

Tgt Ion: 94 Resp: 410
 Ion Ratio Lower Upper
 94 100
 96 24.6 74.6 112.0#

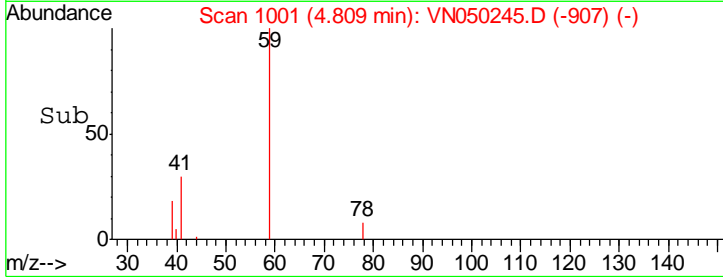
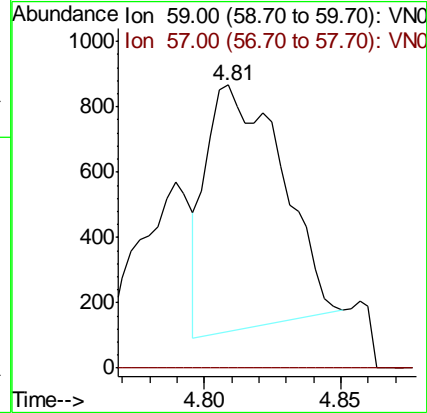
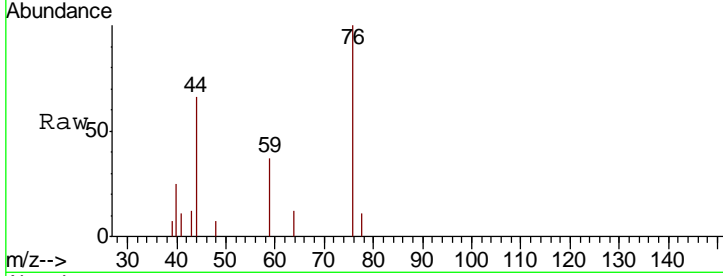




#11
 Tert butyl alcohol
 Concen: 2.08 ug/l
 RT: 4.81 min Scan# 1001
 Delta R.T. 0.00 min
 Lab File: VN050245.D
 Acq: 1 Aug 2018 13:30

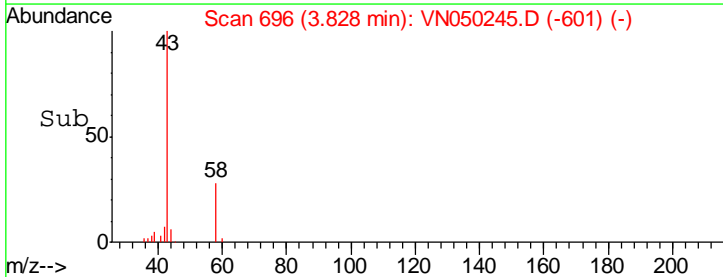
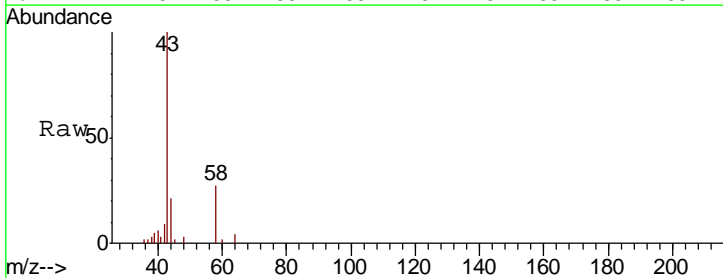
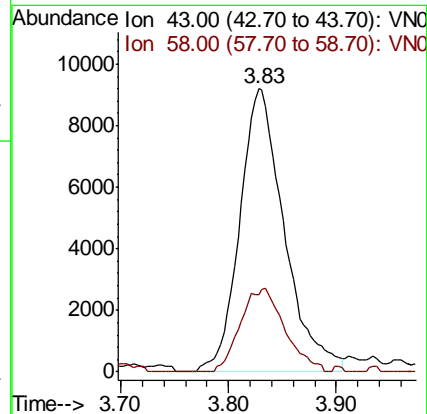
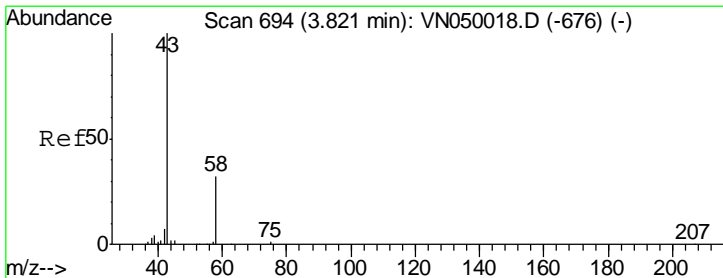
Instrument :
 MSVOA_N
 ClientSampled :
 MW-09

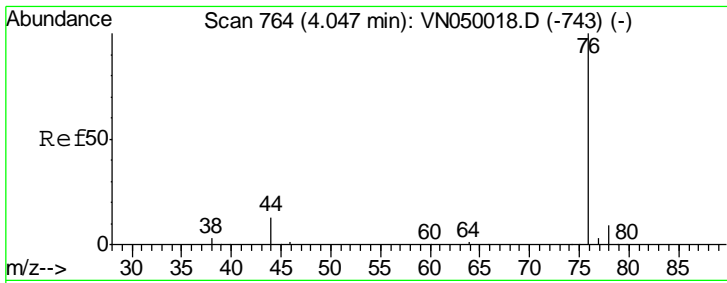
Tgt Ion: 59 Resp: 1435
 Ion Ratio Lower Upper
 59 100
 57 0.0 8.5 12.7#



#16
 Acetone
 Concen: 7.76 ug/l
 RT: 3.83 min Scan# 696
 Delta R.T. 0.00 min
 Lab File: VN050245.D
 Acq: 1 Aug 2018 13:30

Tgt Ion: 43 Resp: 26419
 Ion Ratio Lower Upper
 43 100
 58 27.3 25.8 38.8

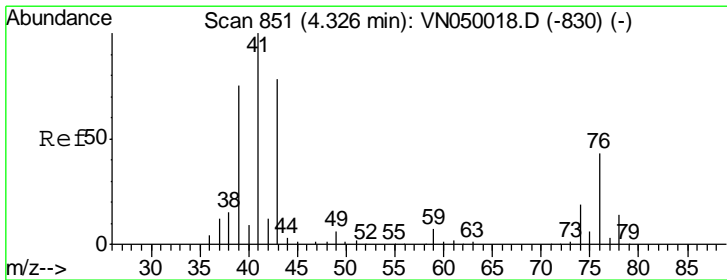
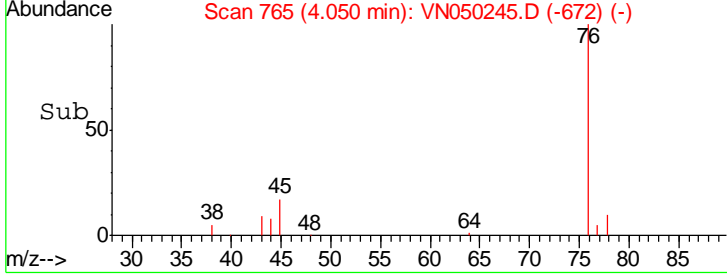
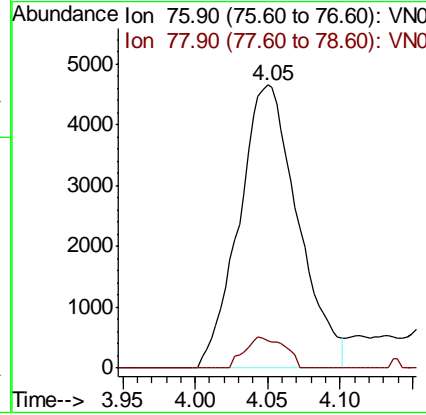
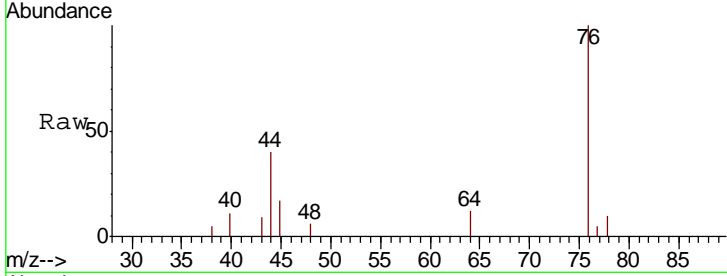




#17
 Carbon Disulfide
 Concen: 0.55 ug/l
 RT: 4.05 min Scan# 765
 Delta R.T. 0.00 min
 Lab File: VN050245.D
 Acq: 1 Aug 2018 13:30

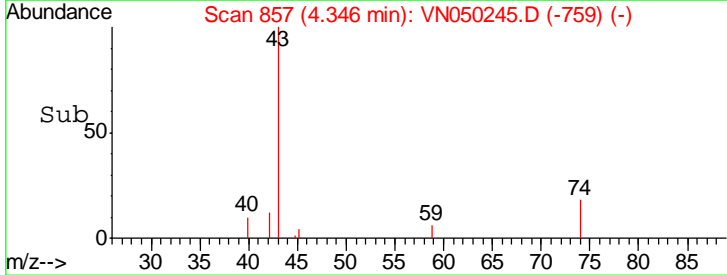
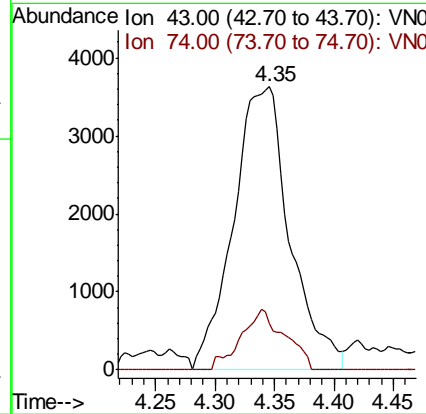
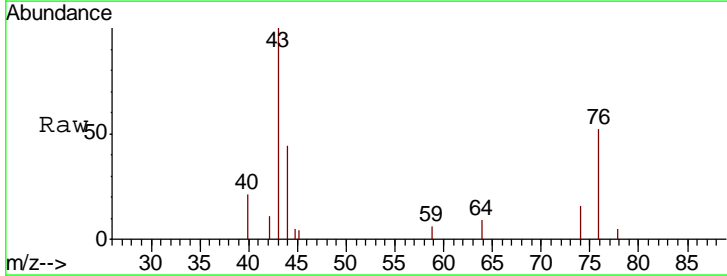
Instrument : MSVOA_N
 ClientSampled : MW-09

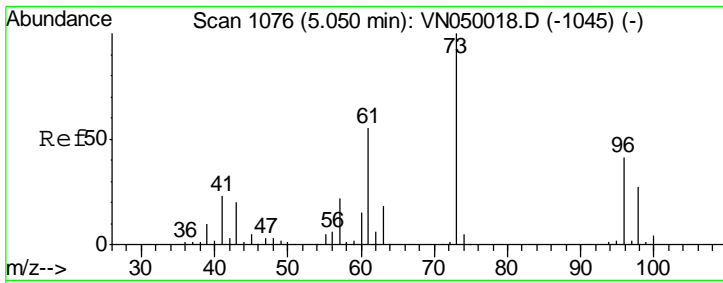
Tgt Ion	Resp	Lower	Upper
76	13129		
78	9.6	7.3	10.9



#18
 Methyl Acetate
 Concen: Below Cal
 RT: 4.35 min Scan# 857
 Delta R.T. 0.01 min
 Lab File: VN050245.D
 Acq: 1 Aug 2018 13:30

Tgt Ion	Resp	Lower	Upper
43	11942		
74	16.6	19.2	28.8#

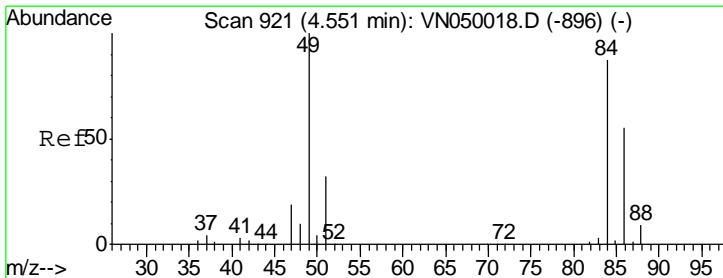
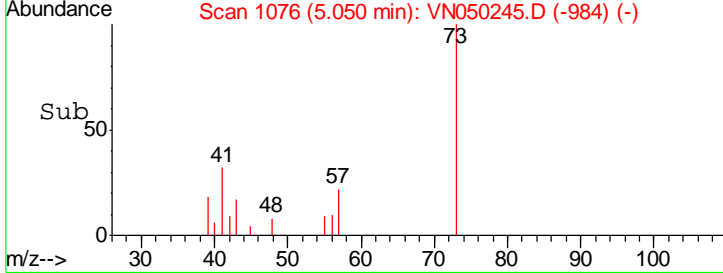
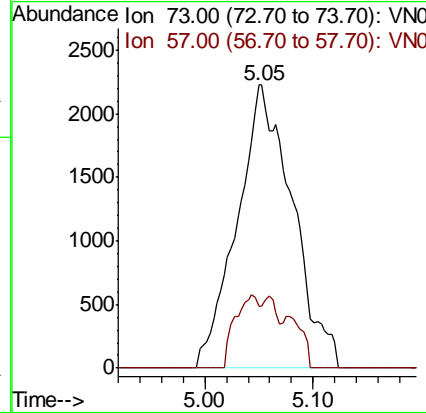
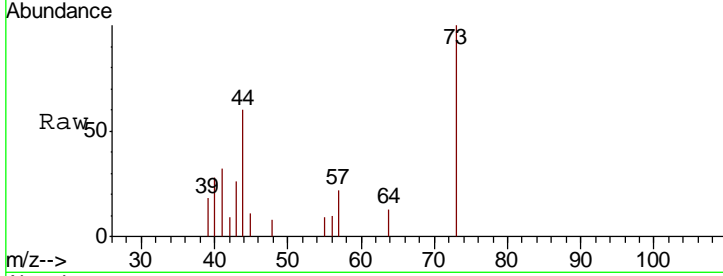




#19
 Methyl tert-butyl Ether
 Concen: 0.38 ug/l
 RT: 5.05 min Scan# 1076
 Delta R.T. -0.00 min
 Lab File: VN050245.D
 Acq: 1 Aug 2018 13:30

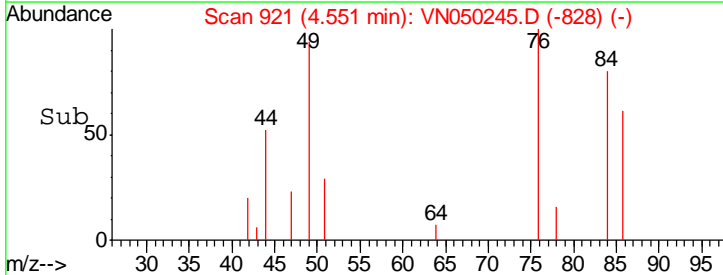
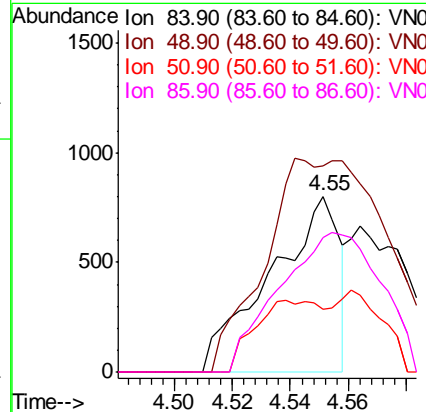
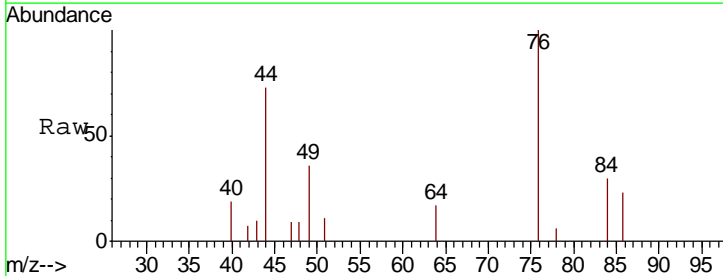
Instrument : MSVOA_N
 ClientSampled : MW-09

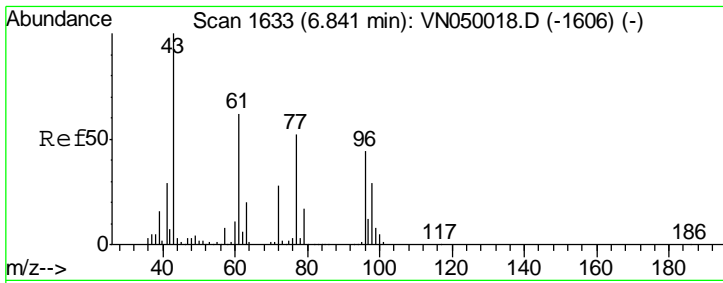
Tgt Ion: 73 Resp: 7938
 Ion Ratio Lower Upper
 73 100
 57 22.1 18.0 27.0



#20
 Methylene Chloride
 Concen: Below Cal
 RT: 4.55 min Scan# 921
 Delta R.T. 0.00 min
 Lab File: VN050245.D
 Acq: 1 Aug 2018 13:30

Tgt Ion: 84 Resp: 1328
 Ion Ratio Lower Upper
 84 100
 49 117.2 94.8 142.2
 51 36.1 28.3 42.5
 86 76.7 51.0 76.6#

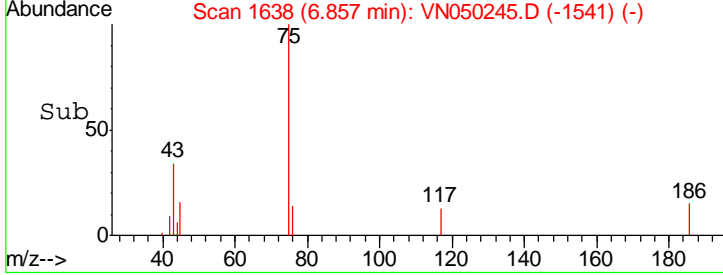
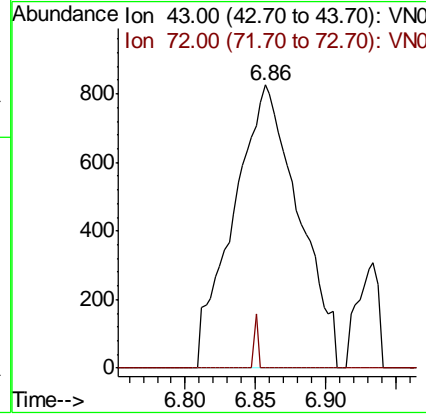
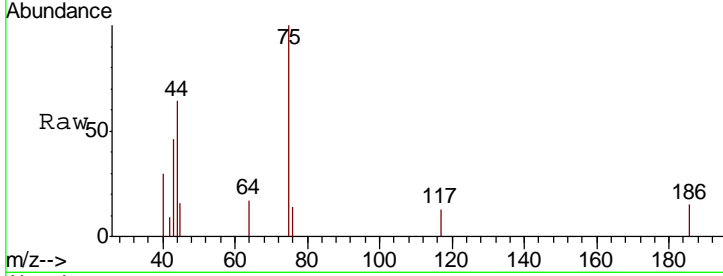




#25
 2-Butanone
 Concen: 0.74 ug/l
 RT: 6.86 min Scan# 1638
 Delta R.T. 0.01 min
 Lab File: VN050245.D
 Acq: 1 Aug 2018 13:30

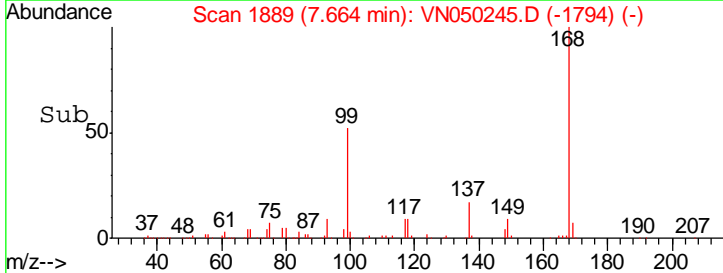
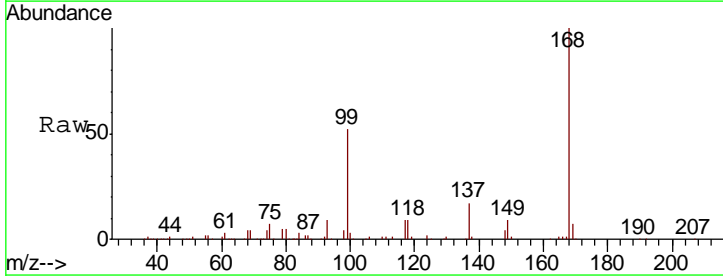
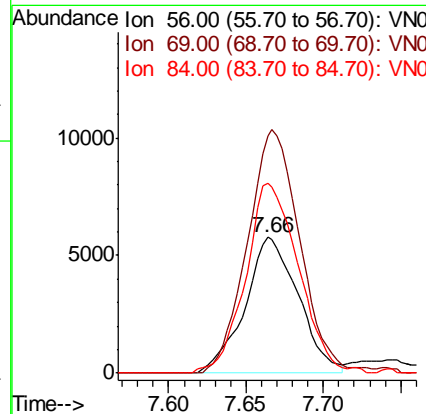
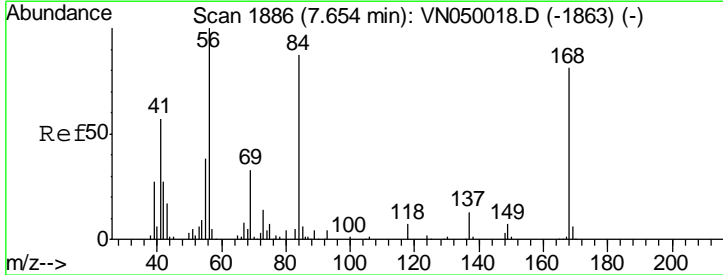
Instrument :
 MSVOA_N
 ClientSampled :
 MW-09

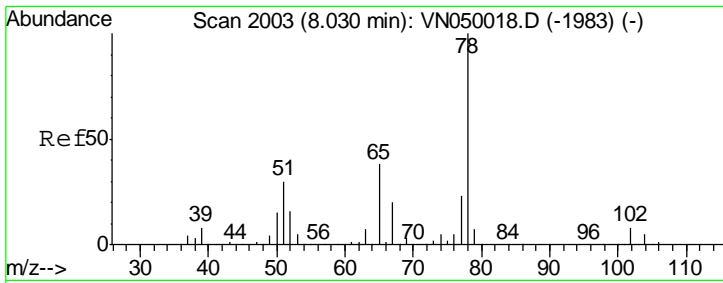
Tgt Ion: 43 Resp: 2654
 Ion Ratio Lower Upper
 43 100
 72 0.0 21.5 32.3#



#31
 Cyclohexane
 Concen: 1.01 ug/l
 RT: 7.66 min Scan# 1889
 Delta R.T. 0.01 min
 Lab File: VN050245.D
 Acq: 1 Aug 2018 13:30

Tgt Ion: 56 Resp: 13855
 Ion Ratio Lower Upper
 56 100
 69 174.8 26.2 39.4#
 84 139.6 67.4 101.0#

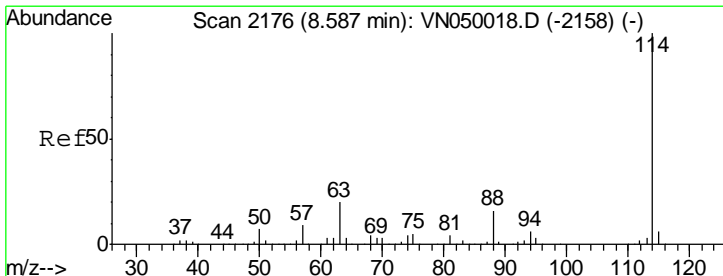
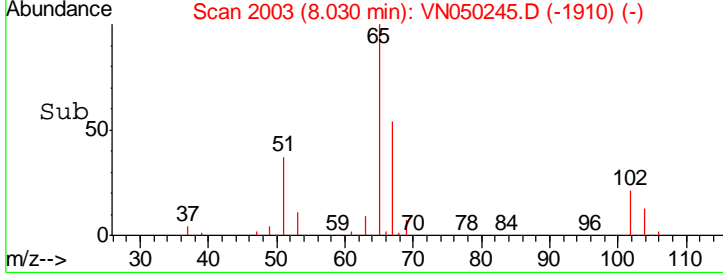
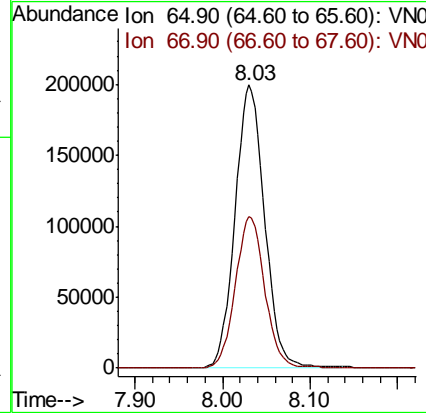
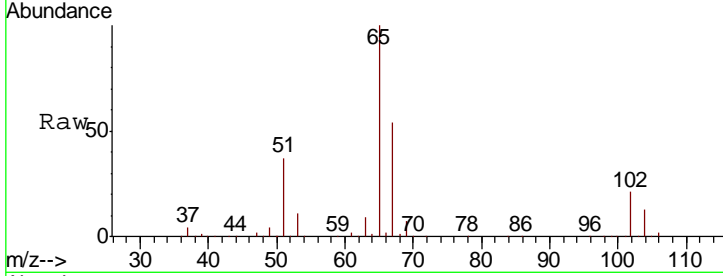




#33
 1,2-Dichloroethane-d4
 Concen: 49.82 ug/l
 RT: 8.03 min Scan# 2003
 Delta R.T. 0.00 min
 Lab File: VN050245.D
 Acq: 1 Aug 2018 13:30

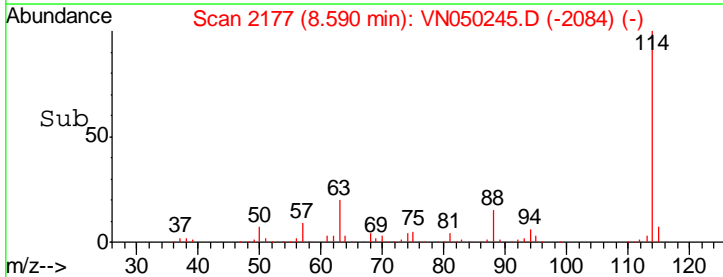
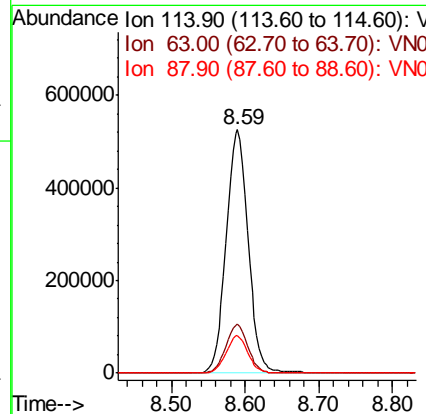
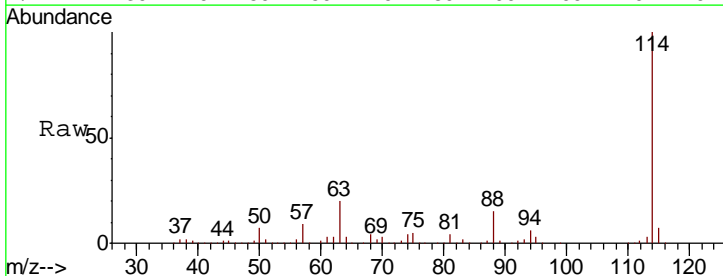
Instrument : MSVOA_N
 ClientSampled : MW-09

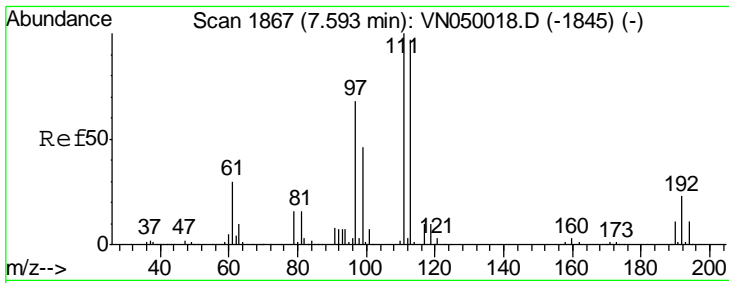
Tgt Ion	Resp	Lower	Upper
65	100		
67	53.6	0.0	108.4



#34
 1,4-Difluorobenzene
 Concen: 50.00 ug/l
 RT: 8.59 min Scan# 2177
 Delta R.T. 0.00 min
 Lab File: VN050245.D
 Acq: 1 Aug 2018 13:30

Tgt Ion	Resp	Lower	Upper
114	100		
63	19.9	0.0	40.0
88	15.3	0.0	31.2

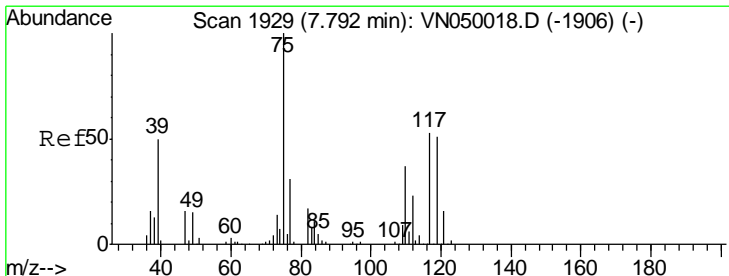
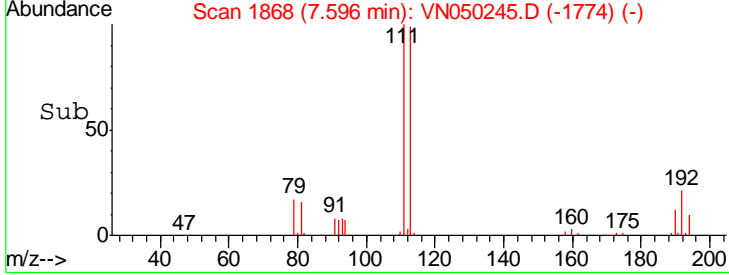
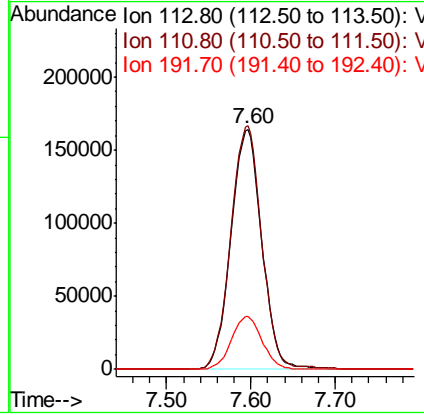
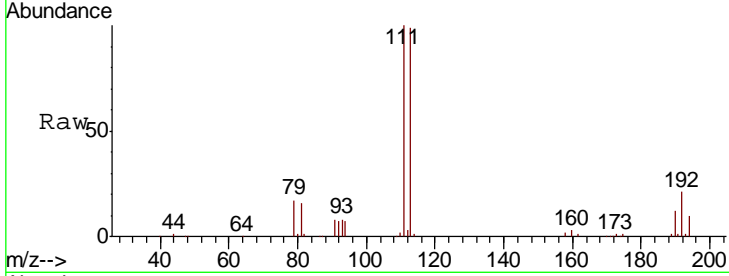




#35
 Dibromofluoromethane
 Concen: 46.82 ug/l
 RT: 7.60 min Scan# 1868
 Delta R.T. 0.00 min
 Lab File: VN050245.D
 Acq: 1 Aug 2018 13:30

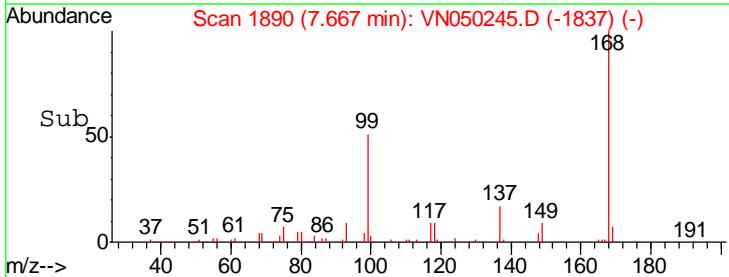
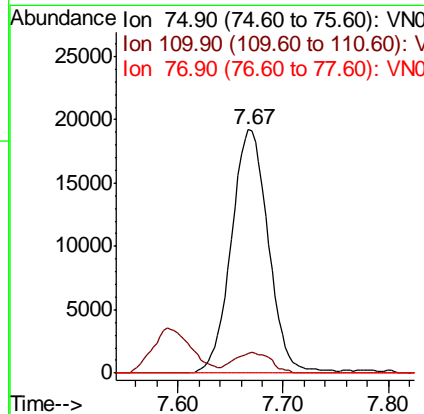
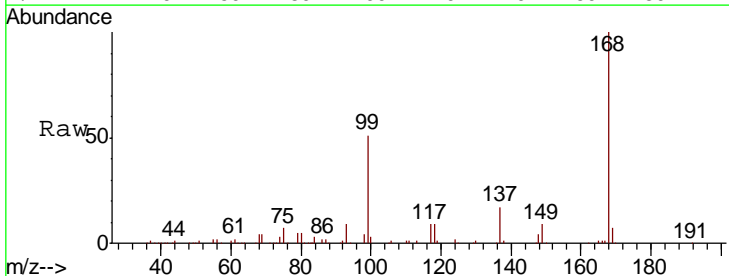
Instrument :
 MSVOA_N
 ClientSampled :
 MW-09

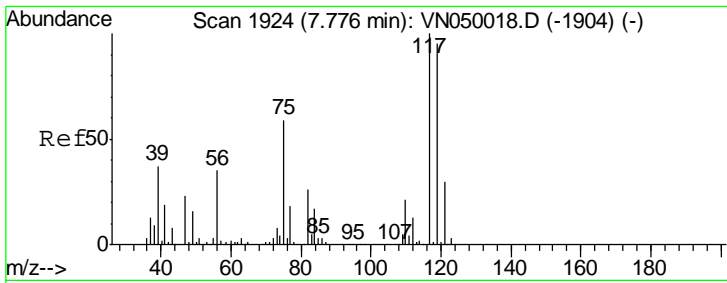
Tgt Ion	Resp	Lower	Upper
113	417403		
111	102.1	80.7	121.1
192	21.9	17.8	26.6



#36
 1,1-Dichloropropene
 Concen: 3.80 ug/l
 RT: 7.67 min Scan# 1890
 Delta R.T. -0.13 min
 Lab File: VN050245.D
 Acq: 1 Aug 2018 13:30

Tgt Ion	Resp	Lower	Upper
75	46767		
110	8.6	18.4	55.2#
77	0.0	25.3	37.9#

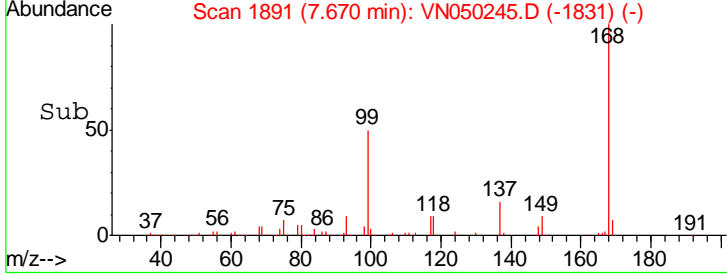
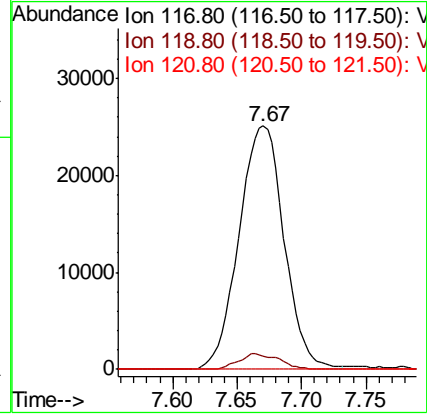
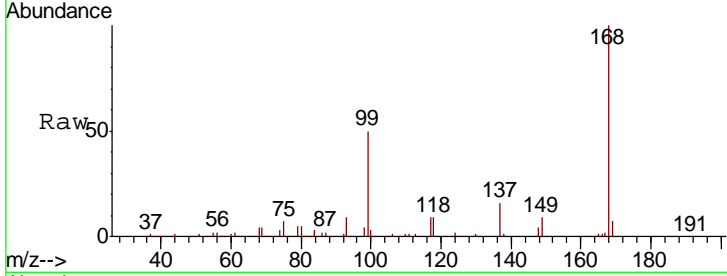




#38
 Carbon Tetrachloride
 Concen: 4.68 ug/l
 RT: 7.67 min Scan# 1891
 Delta R.T. -0.11 min
 Lab File: VN050245.D
 Acq: 1 Aug 2018 13:30

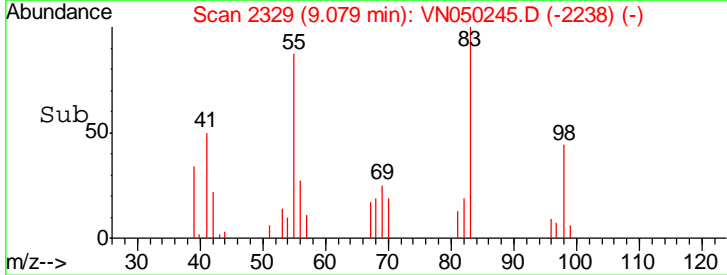
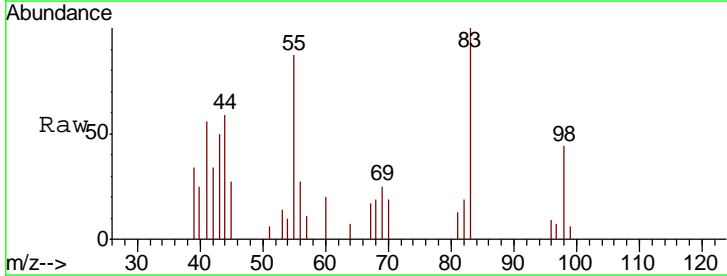
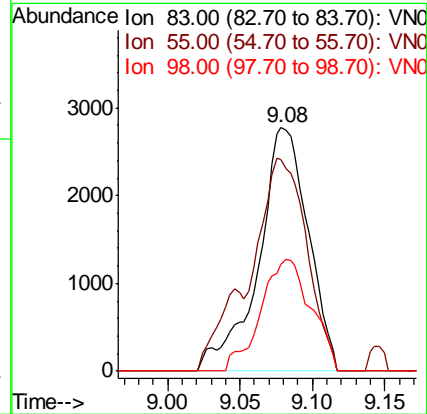
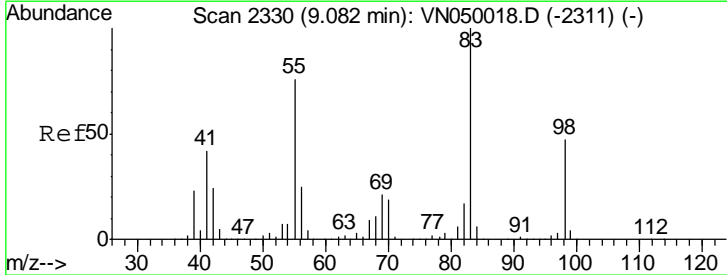
Instrument :
 MSVOA_N
 ClientSampled :
 MW-09

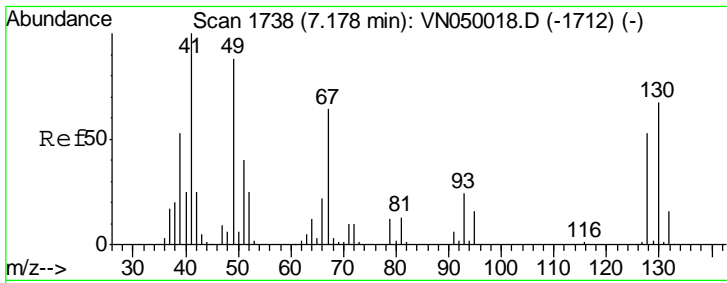
Tgt Ion	Resp	Lower	Upper
117	100		
119	5.2	77.4	116.0#
121	0.0	23.9	35.9#



#39
 Methylcyclohexane
 Concen: 0.52 ug/l
 RT: 9.08 min Scan# 2329
 Delta R.T. -0.01 min
 Lab File: VN050245.D
 Acq: 1 Aug 2018 13:30

Tgt Ion	Resp	Lower	Upper
83	100		
55	87.0	61.8	92.8
98	43.8	36.5	54.7

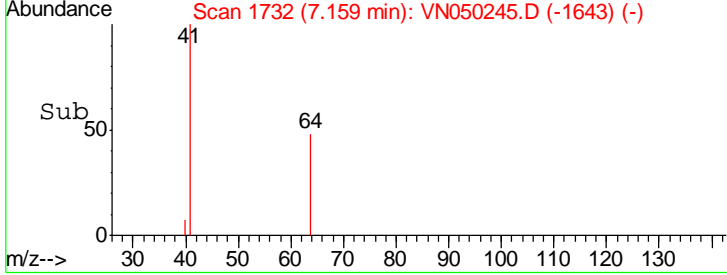
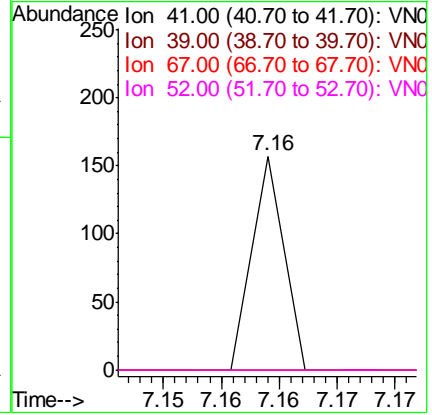
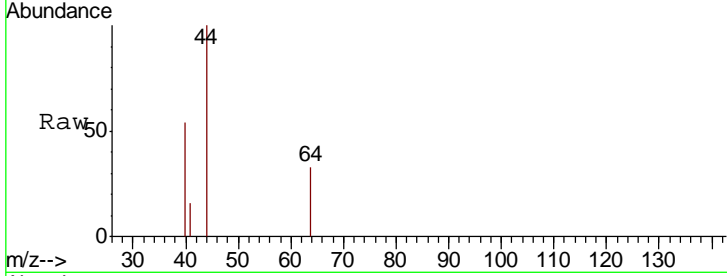




#41
 Methacrylonitrile
 Concen: 2.75 ug/l
 RT: 7.16 min Scan# 1732
 Delta R.T. -0.02 min
 Lab File: VN050245.D
 Acq: 1 Aug 2018 13:30

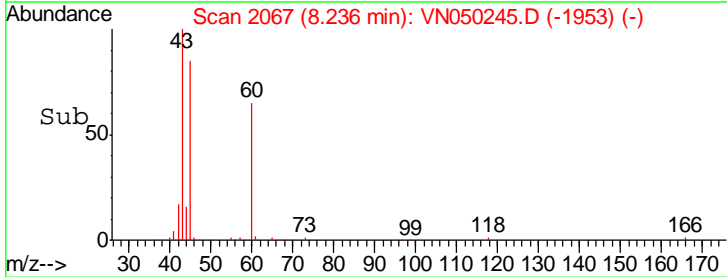
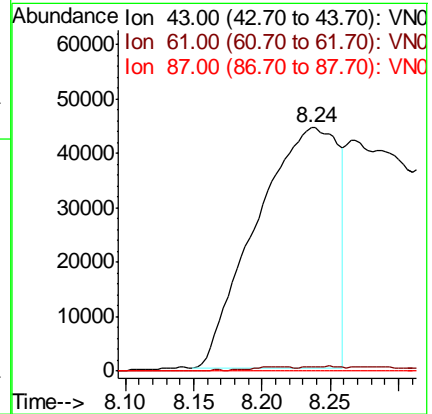
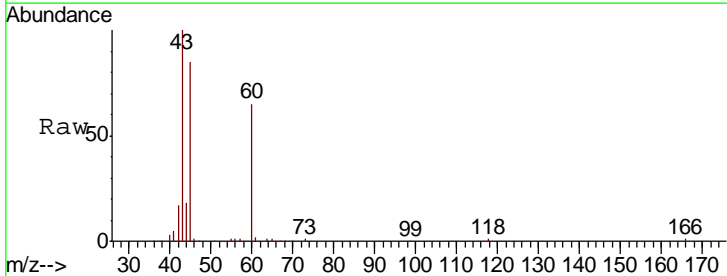
Instrument :
 MSVOA_N
 ClientSampled :
 MW-09

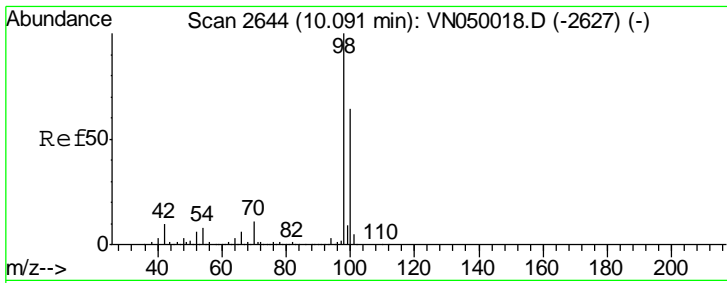
Tgt Ion	Resp	Lower	Upper
41	100		
39	0.0	55.8	83.6#
67	0.0	84.3	126.5#
52	0.0	34.2	51.2#



#43
 Isopropyl Acetate
 Concen: 10.53 ug/l
 RT: 8.24 min Scan# 2067
 Delta R.T. 0.07 min
 Lab File: VN050245.D
 Acq: 1 Aug 2018 13:30

Tgt Ion	Resp	Lower	Upper
43	100		
61	0.0	15.8	23.6#
87	0.0	10.3	15.5#

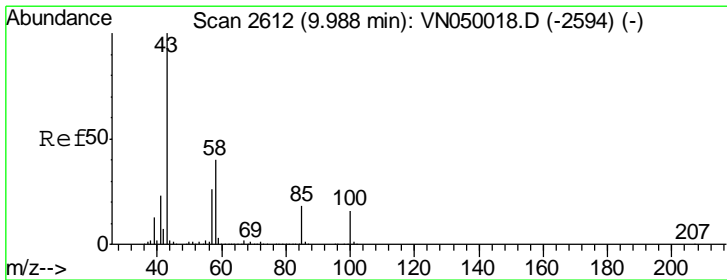
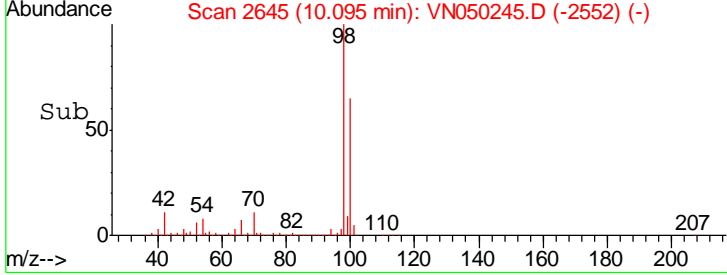
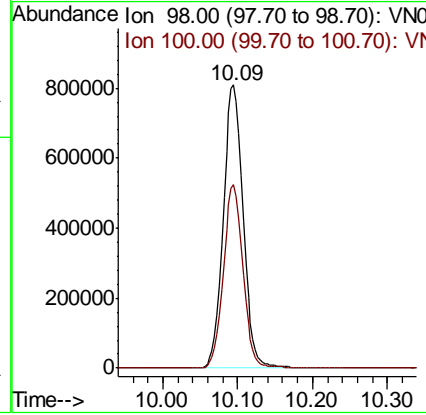
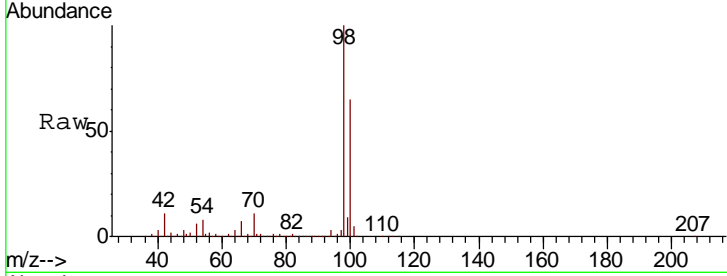




#50
 Toluene-d8
 Concen: 45.45 ug/l
 RT: 10.09 min Scan# 2645
 Delta R.T. 0.00 min
 Lab File: VN050245.D
 Acq: 1 Aug 2018 13:30

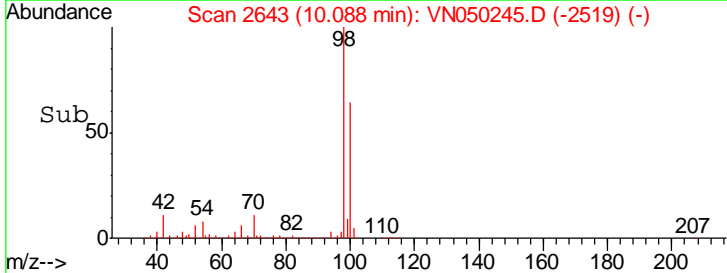
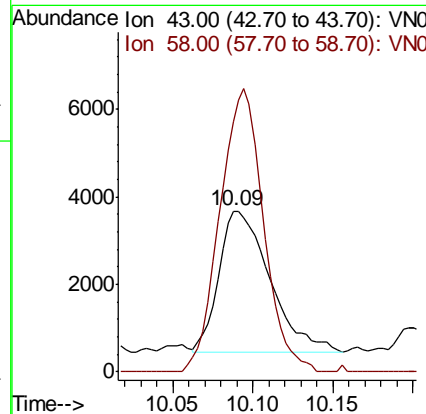
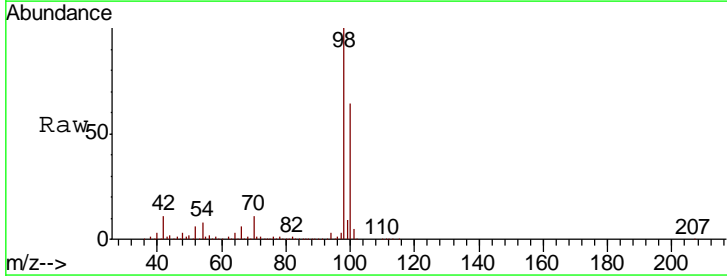
Instrument : MSVOA_N
 ClientSampled : MW-09

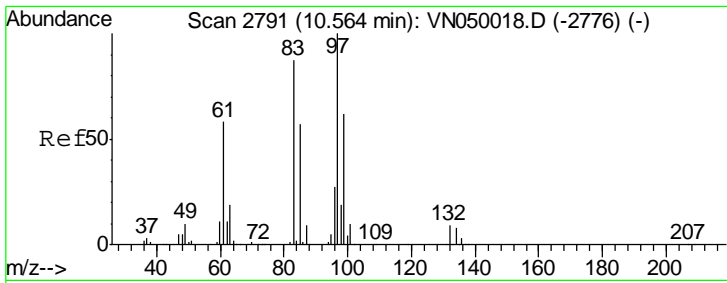
Tgt Ion: 98 Resp: 1489650
 Ion Ratio Lower Upper
 98 100
 100 63.7 50.7 76.1



#51
 4-Methyl-2-Pentanone
 Concen: 0.84 ug/l
 RT: 10.09 min Scan# 2643
 Delta R.T. 0.10 min
 Lab File: VN050245.D
 Acq: 1 Aug 2018 13:30

Tgt Ion: 43 Resp: 7047
 Ion Ratio Lower Upper
 43 100
 58 171.1 31.9 47.9#

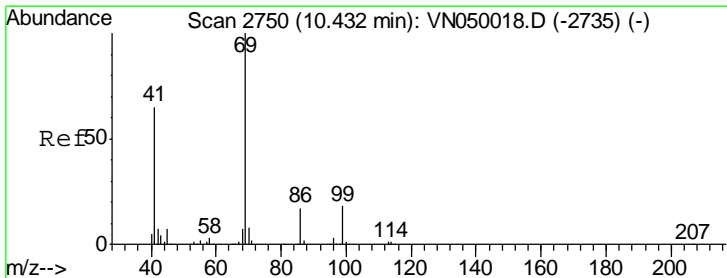
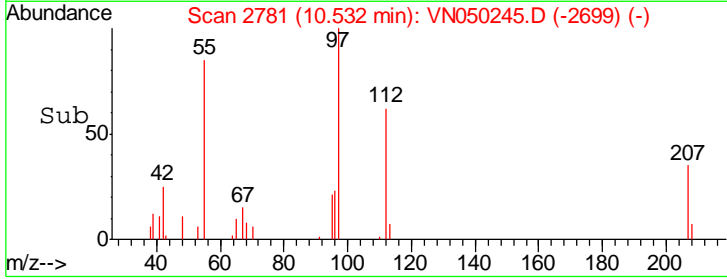
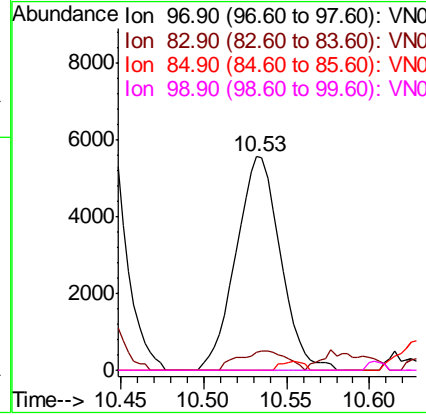
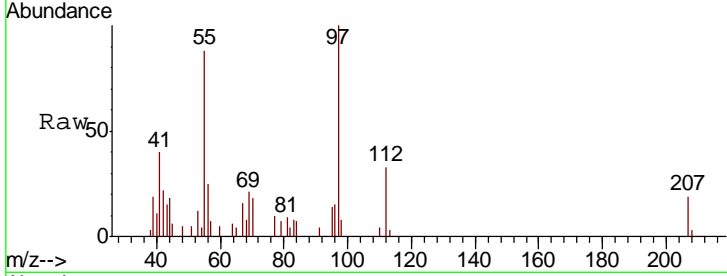




#55
 1,1,2-Trichloroethane
 Concen: 1.18 ug/l
 RT: 10.53 min Scan# 2781
 Delta R.T. -0.04 min
 Lab File: VN050245.D
 Acq: 1 Aug 2018 13:30

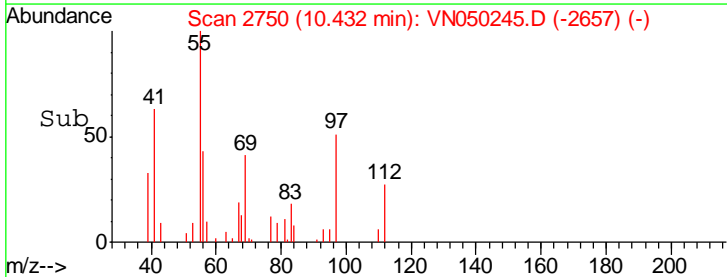
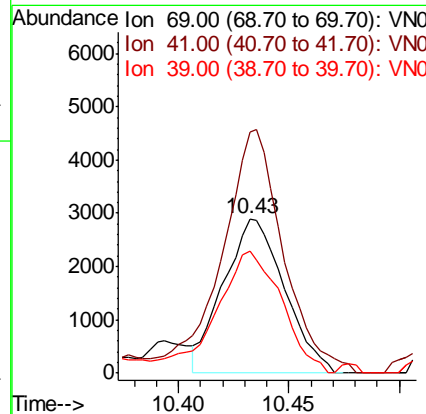
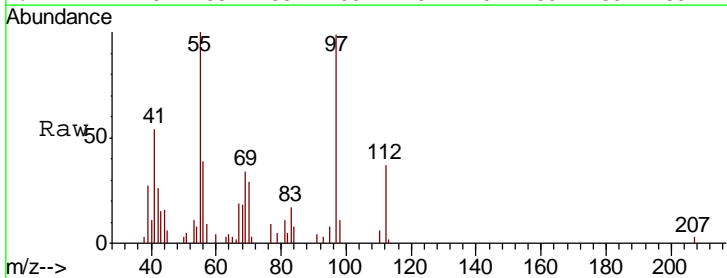
Instrument : MSVOA_N
 ClientSampled : MW-09

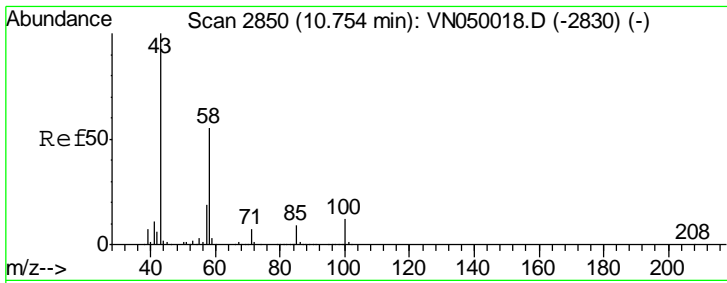
Tgt Ion	Resp	Lower	Upper
97	10343		
83	8.2	69.2	103.8#
85	0.0	44.0	66.0#
99	0.0	49.9	74.9#



#56
 Ethyl methacrylate
 Concen: 2.48 ug/l
 RT: 10.43 min Scan# 2750
 Delta R.T. 0.00 min
 Lab File: VN050245.D
 Acq: 1 Aug 2018 13:30

Tgt Ion	Resp	Lower	Upper
69	5548		
41	160.0	51.0	76.4#
39	85.5	26.6	40.0#

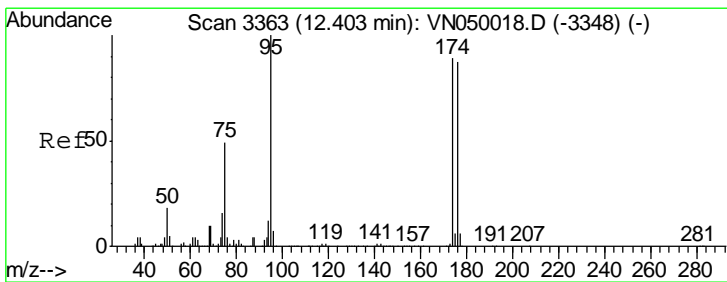
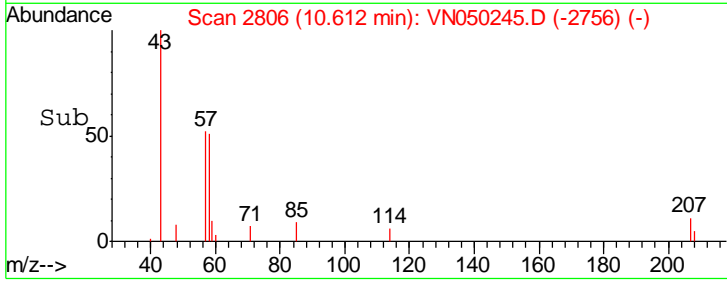
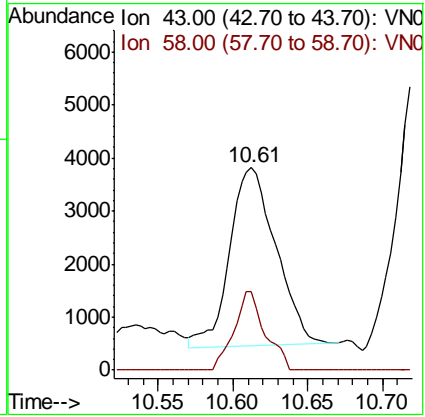
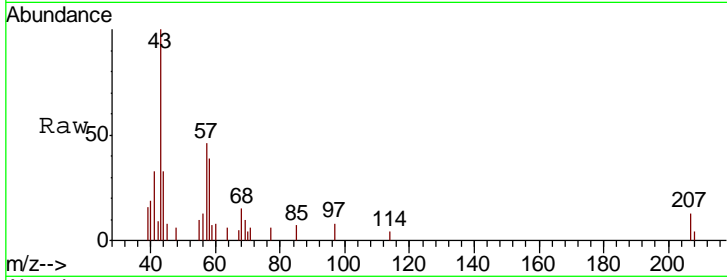




#59
 2-Hexanone
 Concen: 6.32 ug/l
 RT: 10.61 min Scan# 2806
 Delta R.T. -0.14 min
 Lab File: VN050245.D
 Acq: 1 Aug 2018 13:30

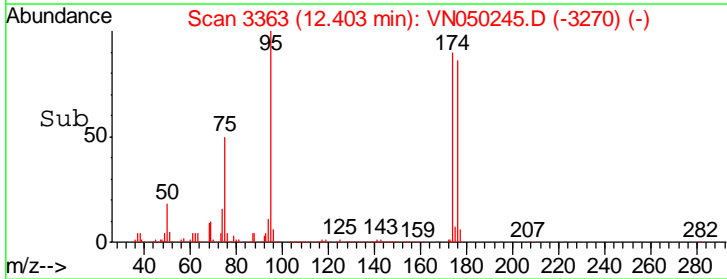
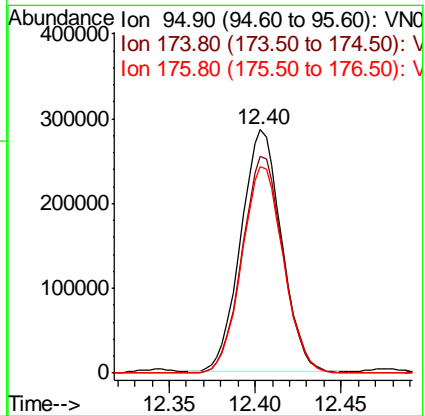
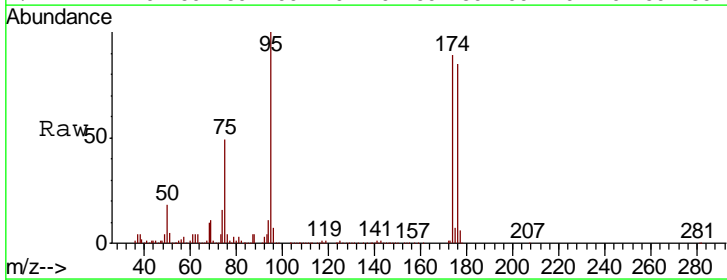
Instrument : MSVOA_N
 ClientSampled : MW-09

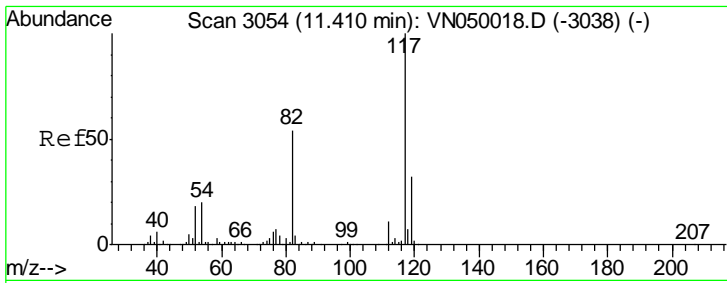
Tgt Ion	Resp	Lower	Upper
43	100		
58	29.3	27.6	82.7



#62
 4-Bromofluorobenzene
 Concen: 43.43 ug/l
 RT: 12.40 min Scan# 3363
 Delta R.T. 0.00 min
 Lab File: VN050245.D
 Acq: 1 Aug 2018 13:30

Tgt Ion	Resp	Lower	Upper
95	100		
174	90.7	0.0	178.2
176	87.0	0.0	173.4

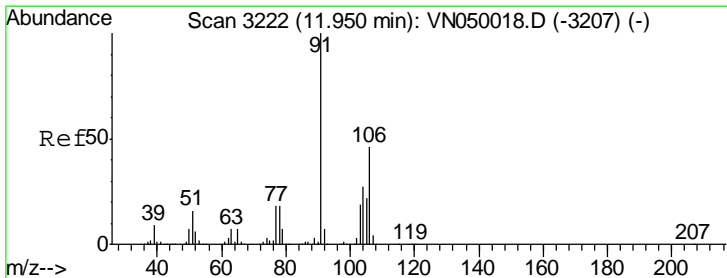
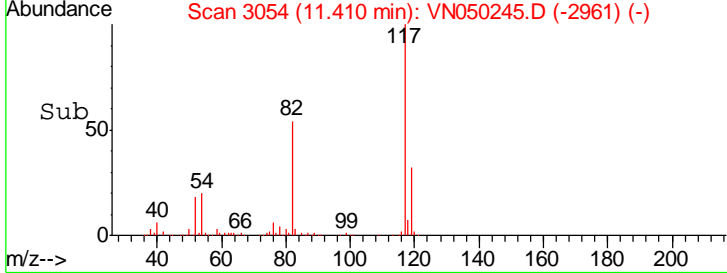
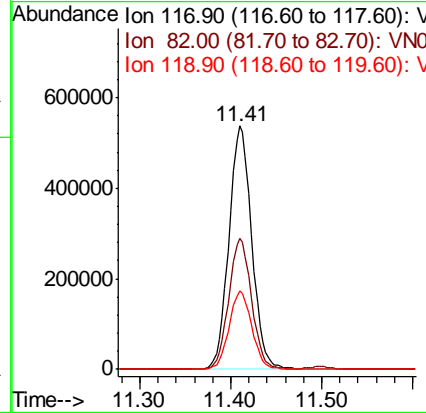
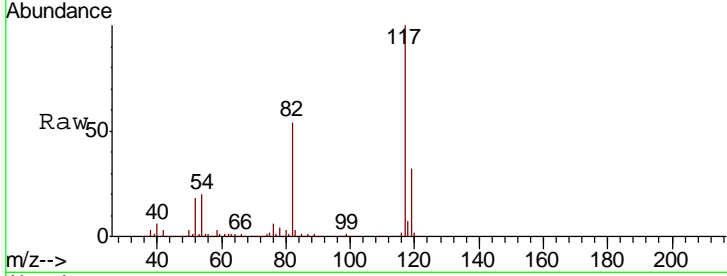




#63
 Chlorobenzene-d5
 Concen: 50.00 ug/l
 RT: 11.41 min Scan# 3054
 Delta R.T. 0.00 min
 Lab File: VN050245.D
 Acq: 1 Aug 2018 13:30

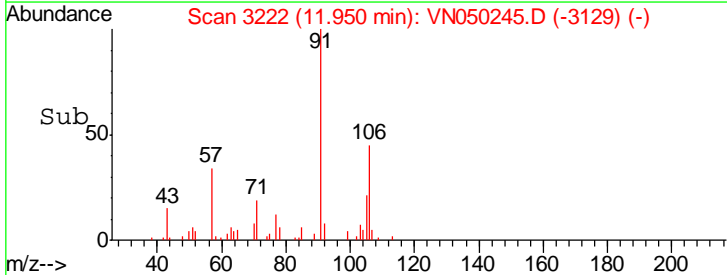
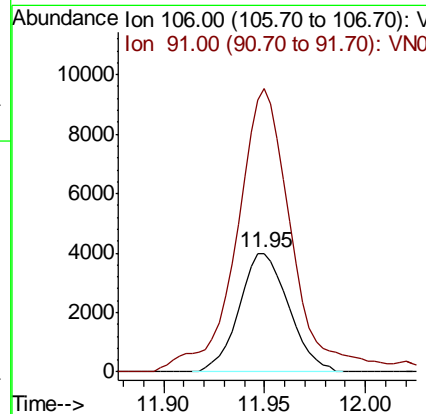
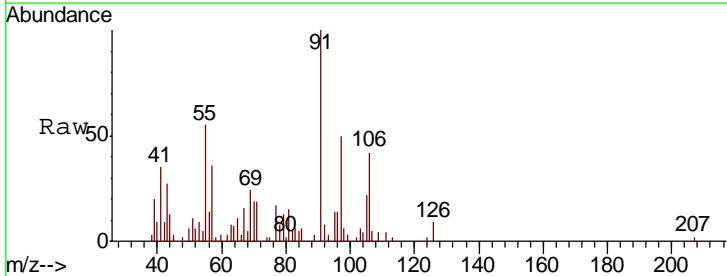
Instrument : MSVOA_N
 ClientSampled : MW-09

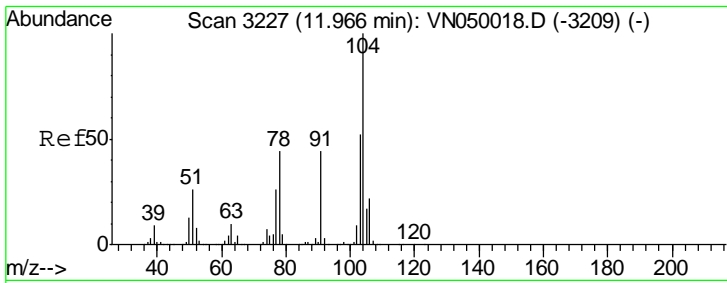
Tgt Ion	Resp	Lower	Upper
117	934624		
82	53.7	43.7	65.5
119	32.1	26.1	39.1



#69
 o-Xylene
 Concen: 0.50 ug/l
 RT: 11.95 min Scan# 3222
 Delta R.T. 0.00 min
 Lab File: VN050245.D
 Acq: 1 Aug 2018 13:30

Tgt Ion	Resp	Lower	Upper
106	6846		
91	264.5	107.7	323.1

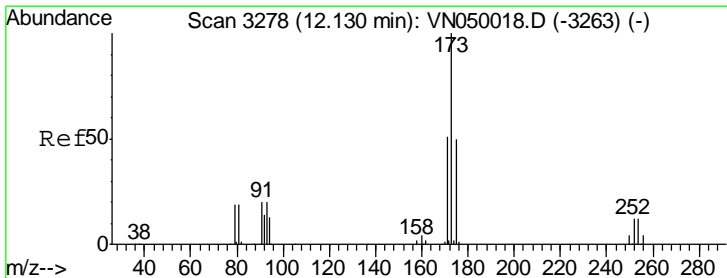
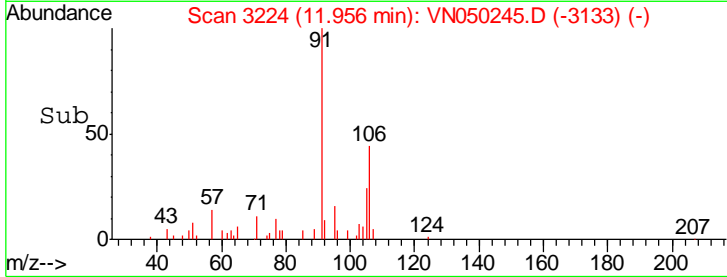
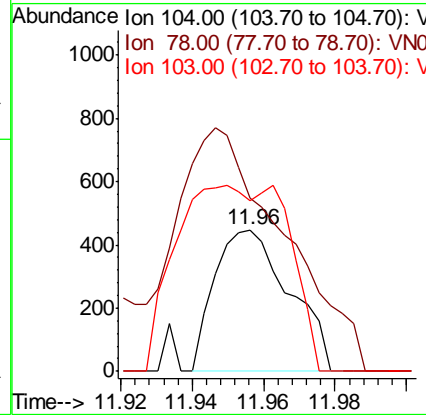
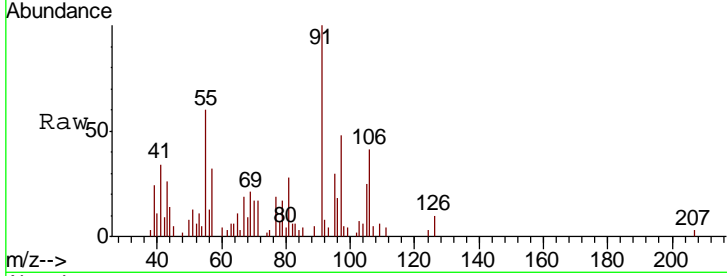




#70
 Styrene
 Concen: 0.95 ug/l
 RT: 11.96 min Scan# 3224
 Delta R.T. -0.01 min
 Lab File: VN050245.D
 Acq: 1 Aug 2018 13:30

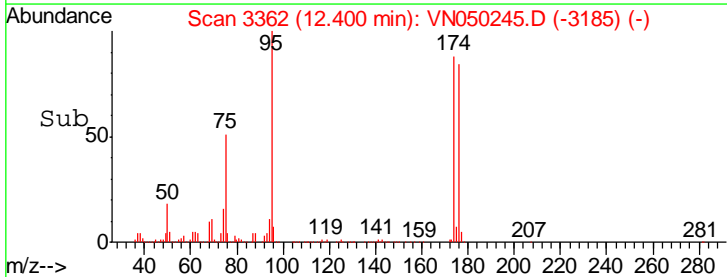
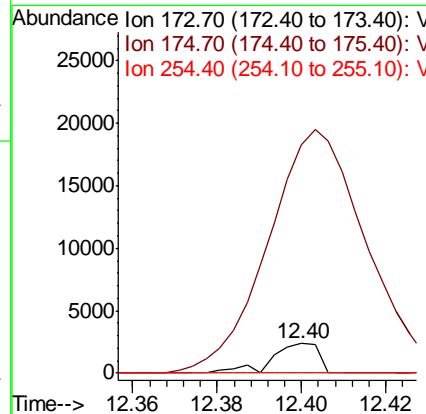
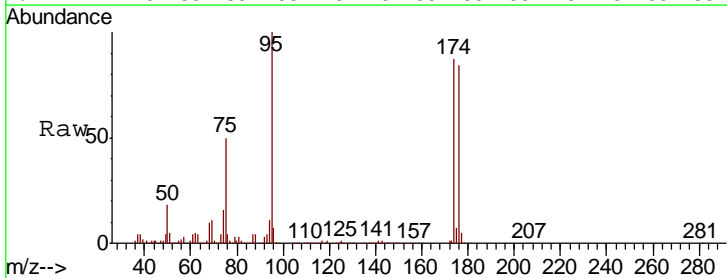
Instrument :
 MSVOA_N
 ClientSampled :
 MW-09

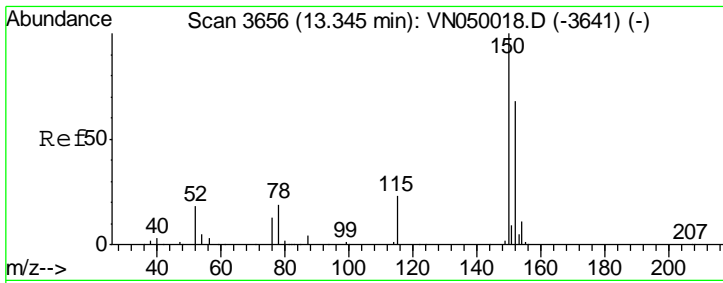
Tgt Ion	Resp	Lower	Upper
104	100		
78	244.5	39.3	58.9#
103	131.8	45.0	67.6#



#71
 Bromoform
 Concen: 0.27 ug/l
 RT: 12.40 min Scan# 3362
 Delta R.T. 0.27 min
 Lab File: VN050245.D
 Acq: 1 Aug 2018 13:30

Tgt Ion	Resp	Lower	Upper
173	100		
175	1550.9	24.1	72.2#
254	0.0	0.2	0.2#

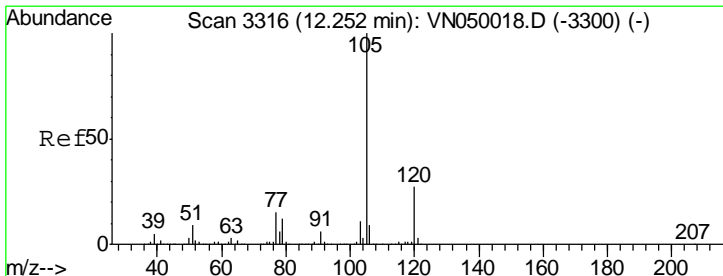
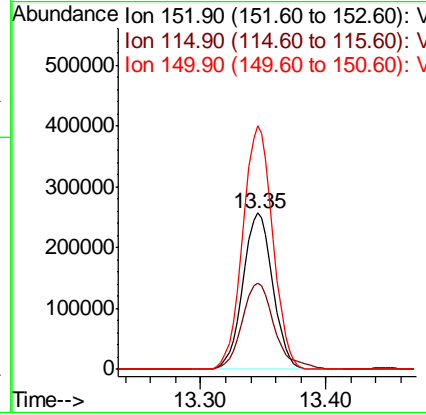
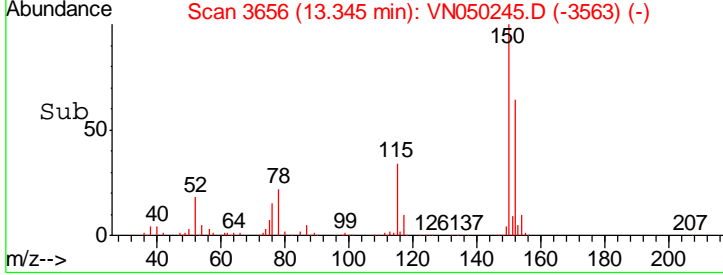
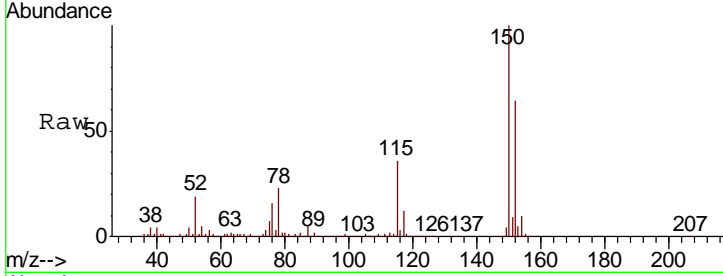




#72
 1,4-Dichlorobenzene-d4
 Concen: 50.00 ug/l
 RT: 13.35 min Scan# 3656
 Delta R.T. 0.00 min
 Lab File: VN050245.D
 Acq: 1 Aug 2018 13:30

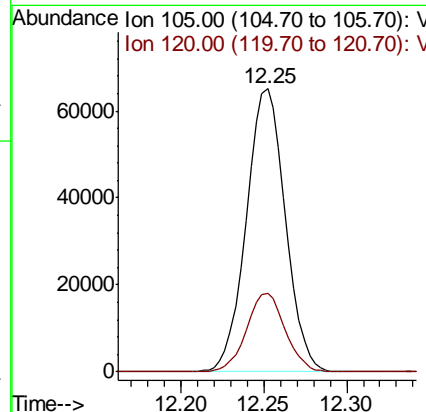
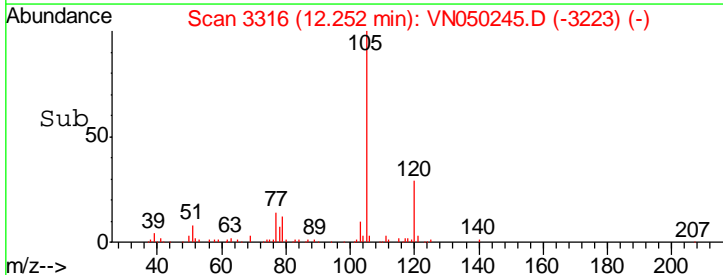
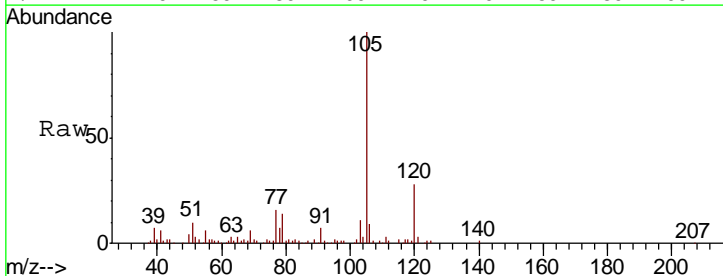
Instrument :
 MSVOA_N
 ClientSampled :
 MW-09

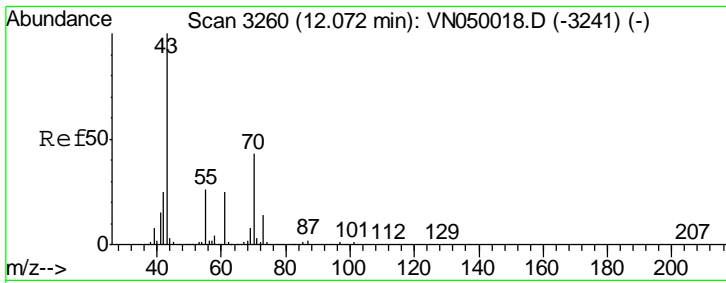
Tgt Ion	Resp	Lower	Upper
152	100		
115	59.9	27.8	83.3
150	157.0	0.0	348.6



#73
 Isopropylbenzene
 Concen: 3.24 ug/l
 RT: 12.25 min Scan# 3316
 Delta R.T. 0.00 min
 Lab File: VN050245.D
 Acq: 1 Aug 2018 13:30

Tgt Ion	Resp	Lower	Upper
105	100		
120	27.6	13.3	39.8

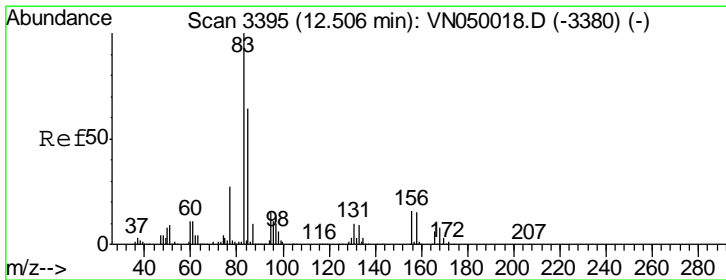
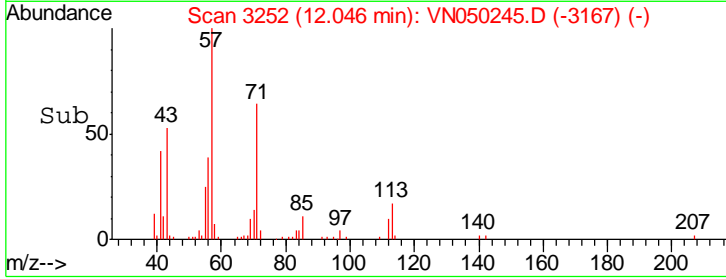
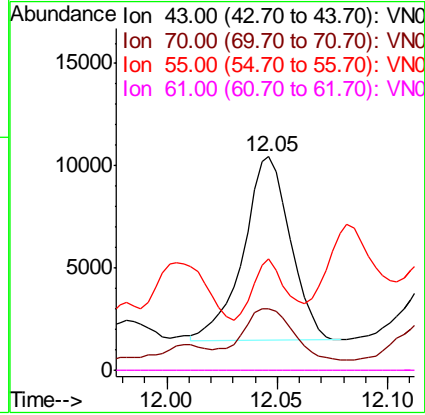
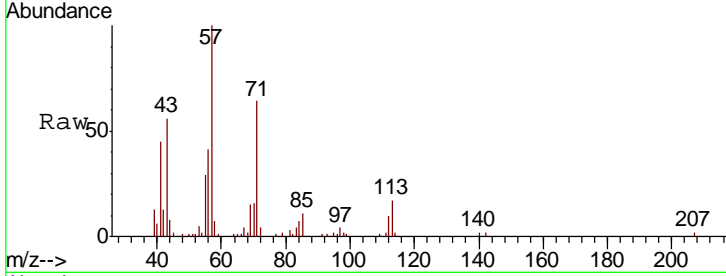




#74
 N-amyl acetate
 Concen: 1.32 ug/l
 RT: 12.05 min Scan# 3252
 Delta R.T. -0.03 min
 Lab File: VN050245.D
 Acq: 1 Aug 2018 13:30

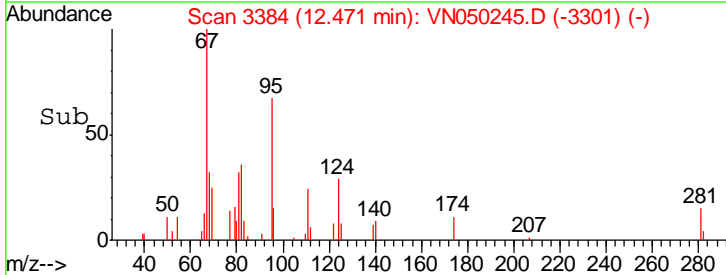
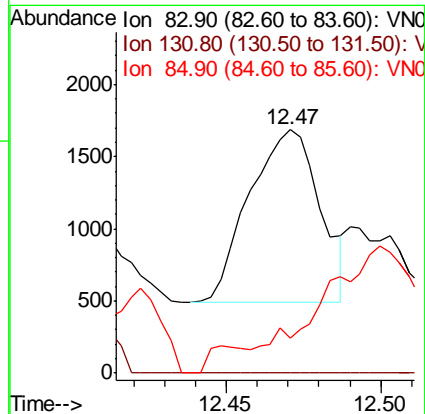
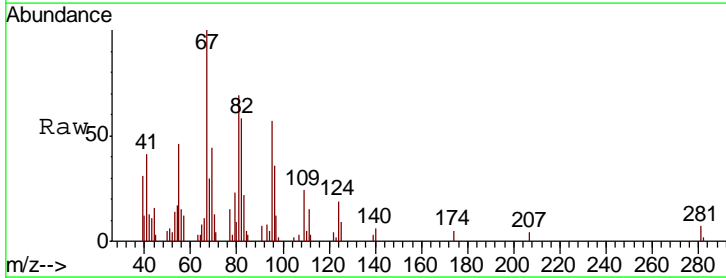
Instrument :
 MSVOA_N
 ClientSampled :
 MW-09

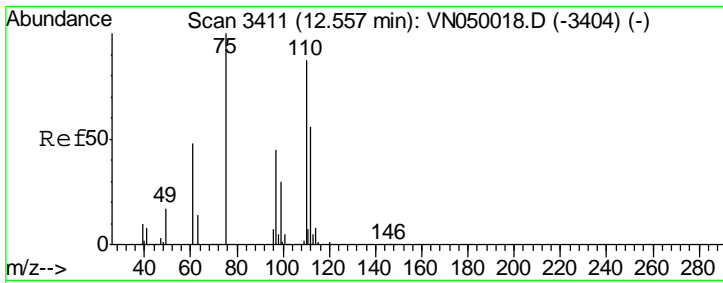
Tgt Ion	Resp	Lower	Upper
43	13268		
70	29.7	34.4	51.6#
55	25.8	20.8	31.2
61	0.0	19.7	29.5#



#75
 1,1,2,2-Tetrachloroethane
 Concen: Below Cal
 RT: 12.47 min Scan# 3384
 Delta R.T. -0.03 min
 Lab File: VN050245.D
 Acq: 1 Aug 2018 13:30

Tgt Ion	Resp	Lower	Upper
83	1891		
131	0.0	5.1	15.3#
85	0.0	32.3	96.8#

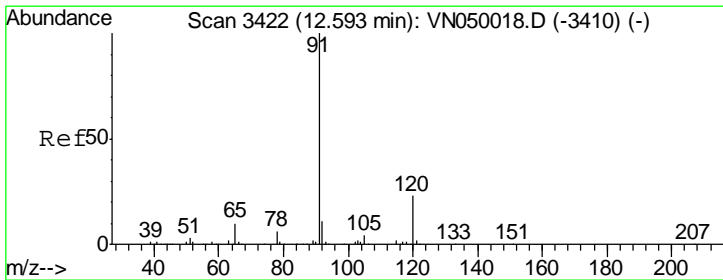
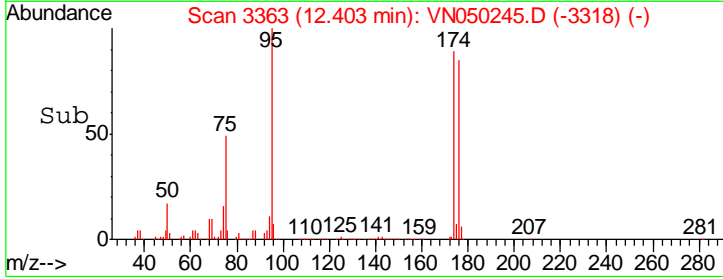
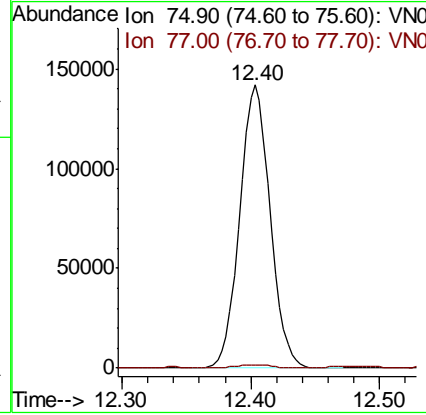
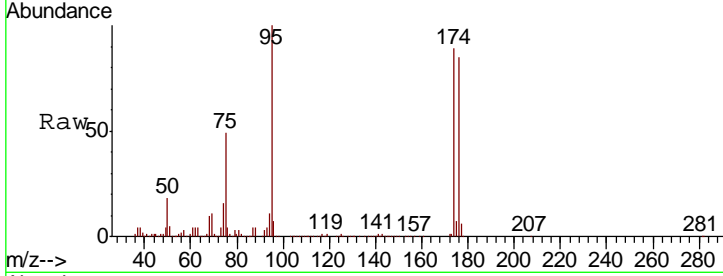




#76
 1,2,3-Trichloropropane
 Concen: 29.46 ug/l
 RT: 12.40 min Scan# 3363
 Delta R.T. -0.15 min
 Lab File: VN050245.D
 Acq: 1 Aug 2018 13:30

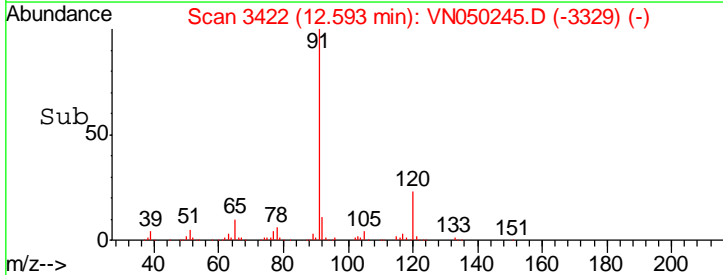
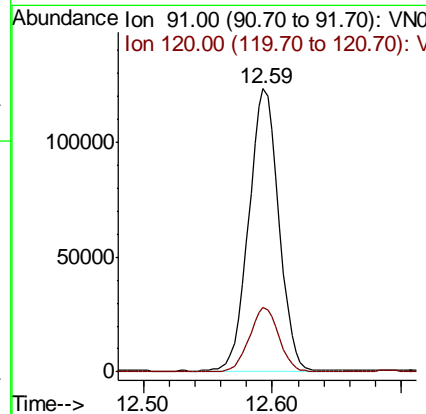
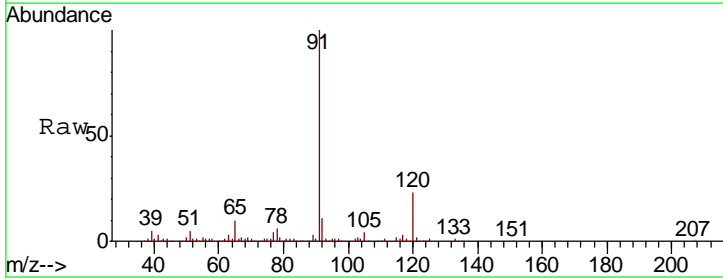
Instrument :
 MSVOA_N
 ClientSampled :
 MW-09

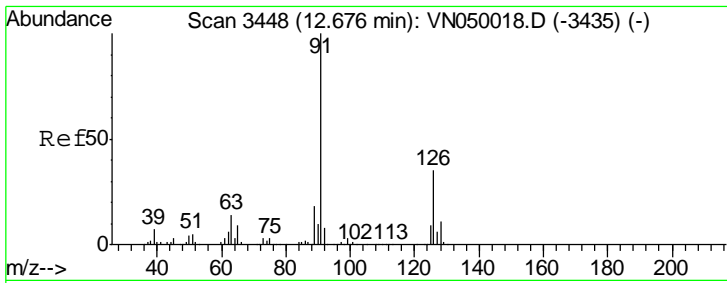
Tgt Ion: 75 Resp: 231956
 Ion Ratio Lower Upper
 75 100
 77 1.3 0.0 0.0#



#78
 n-propylbenzene
 Concen: 5.40 ug/l
 RT: 12.59 min Scan# 3422
 Delta R.T. 0.00 min
 Lab File: VN050245.D
 Acq: 1 Aug 2018 13:30

Tgt Ion: 91 Resp: 198526
 Ion Ratio Lower Upper
 91 100
 120 22.5 11.6 34.7

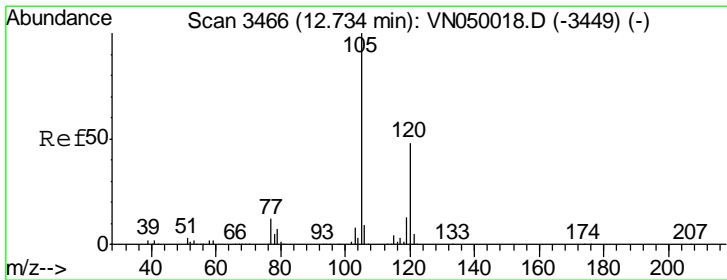
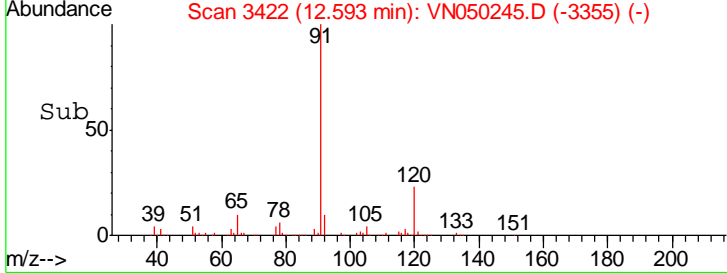
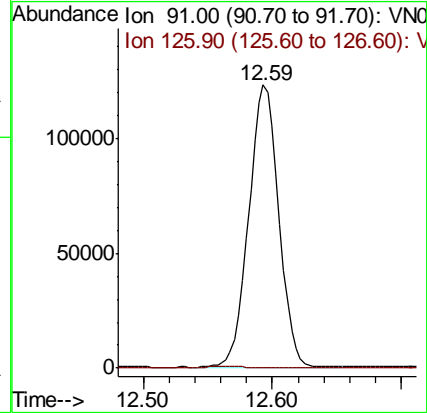
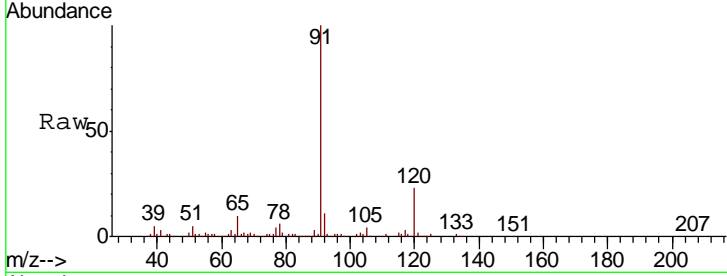




#79
 2-Chlorotoluene
 Concen: 8.72 ug/l
 RT: 12.59 min Scan# 3422
 Delta R.T. -0.08 min
 Lab File: VN050245.D
 Acq: 1 Aug 2018 13:30

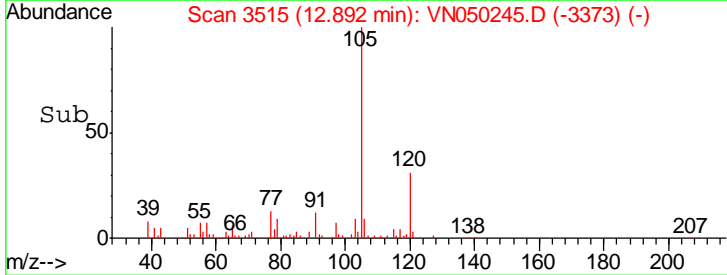
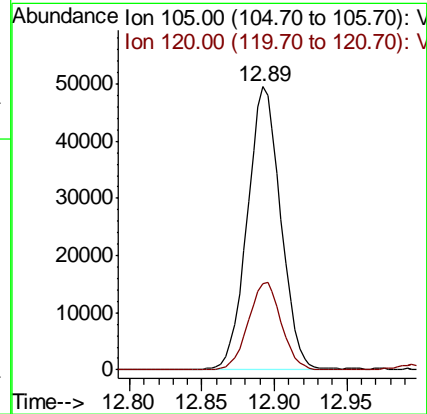
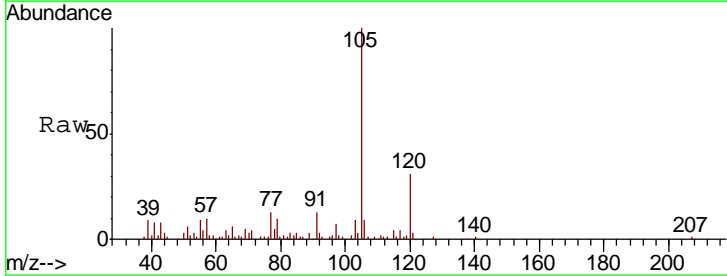
Instrument :
 MSVOA_N
 ClientSampled :
 MW-09

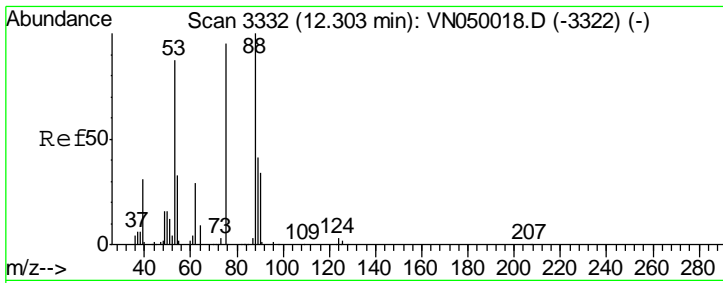
Tgt Ion: 91 Resp: 198526
 Ion Ratio Lower Upper
 91 100
 126 0.0 17.6 52.8#



#80
 1,3,5-Trimethylbenzene
 Concen: 3.07 ug/l
 RT: 12.89 min Scan# 3515
 Delta R.T. 0.16 min
 Lab File: VN050245.D
 Acq: 1 Aug 2018 13:30

Tgt Ion: 105 Resp: 79449
 Ion Ratio Lower Upper
 105 100
 120 30.5 24.4 73.2

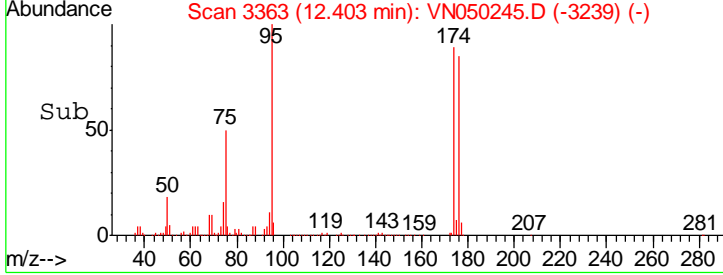
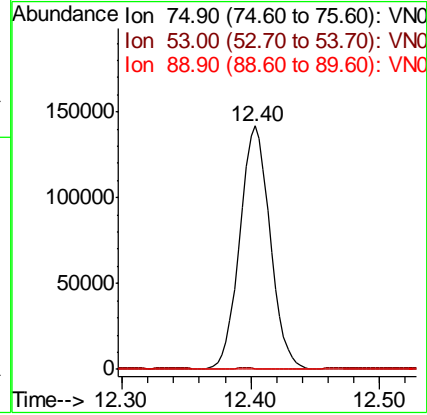
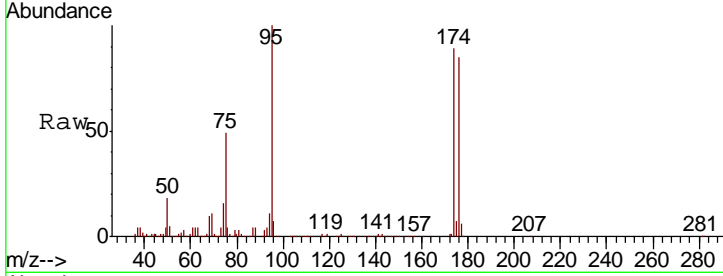




#81
 trans-1,4-Dichloro-2-butene
 Concen: 93.43 ug/l
 RT: 12.40 min Scan# 3363
 Delta R.T. 0.10 min
 Lab File: VN050245.D
 Acq: 1 Aug 2018 13:30

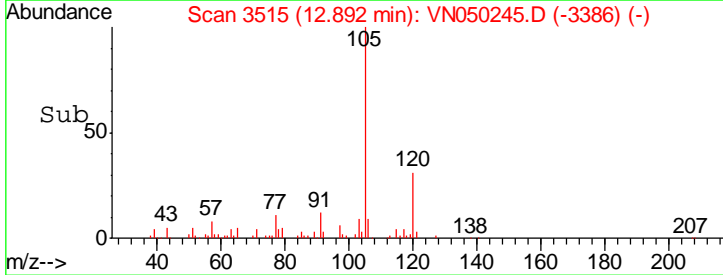
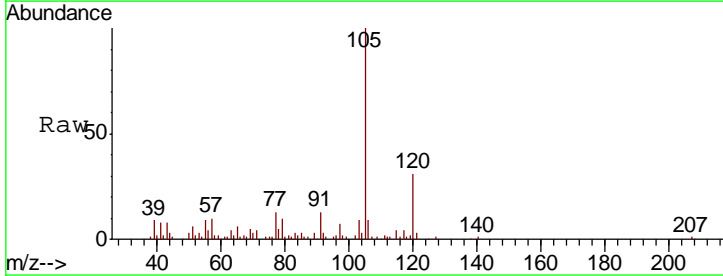
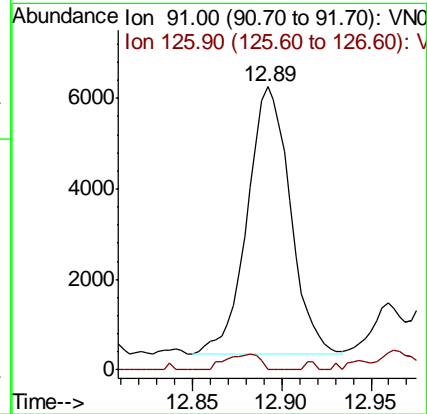
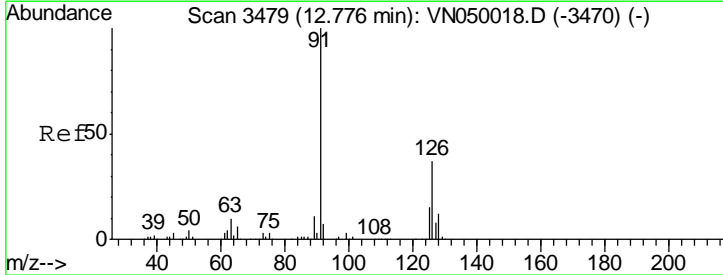
Instrument : MSVOA_N
 ClientSampled : MW-09

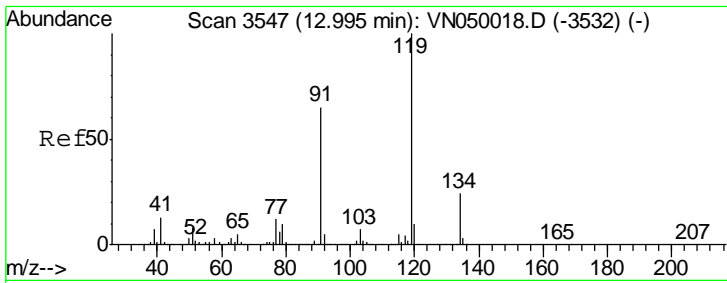
Tgt Ion	Resp	Lower	Upper
75	100		
53	0.3	73.5	110.3#
89	0.0	36.0	54.0#



#82
 4-Chlorotoluene
 Concen: 0.44 ug/l
 RT: 12.89 min Scan# 3515
 Delta R.T. 0.12 min
 Lab File: VN050245.D
 Acq: 1 Aug 2018 13:30

Tgt Ion	Resp	Lower	Upper
91	100		
126	4.6	17.0	51.0#

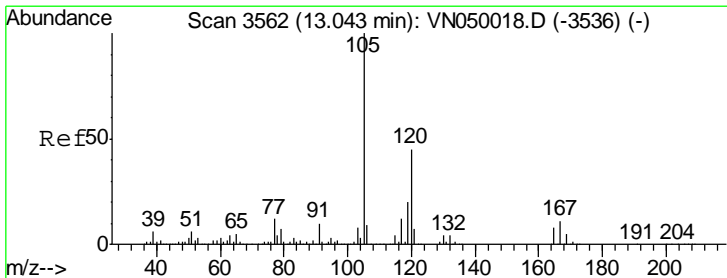
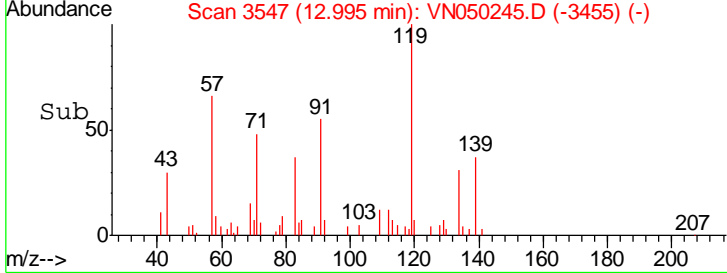
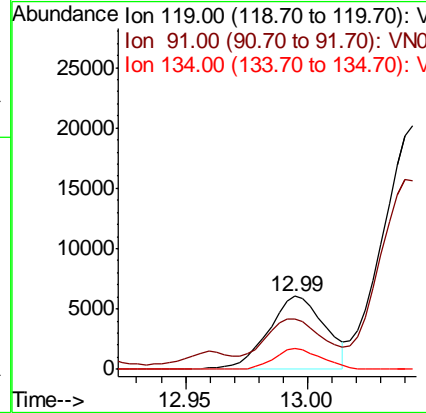
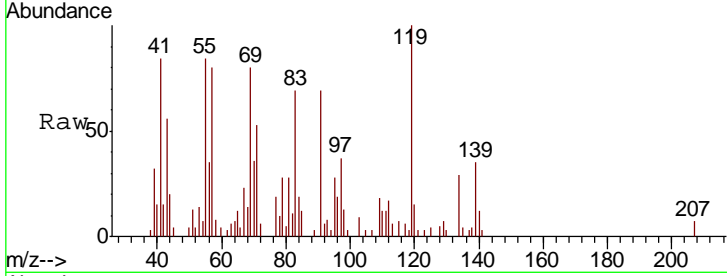




#83
 tert-Butylbenzene
 Concen: 0.43 ug/l
 RT: 12.99 min Scan# 3547
 Delta R.T. -0.00 min
 Lab File: VN050245.D
 Acq: 1 Aug 2018 13:30

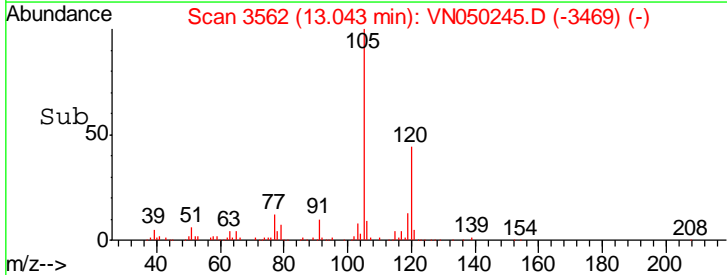
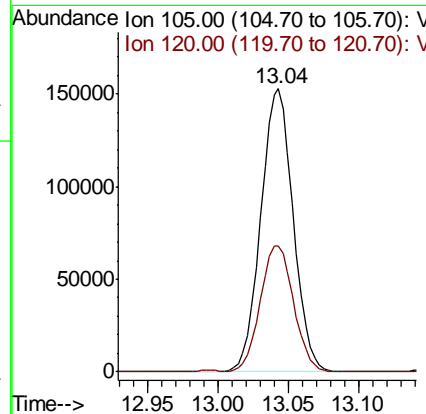
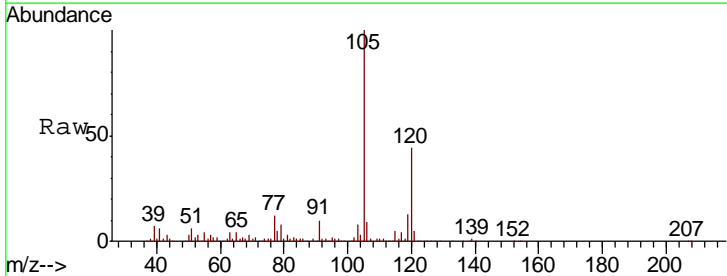
Instrument :
 MSVOA_N
 ClientSampled :
 MW-09

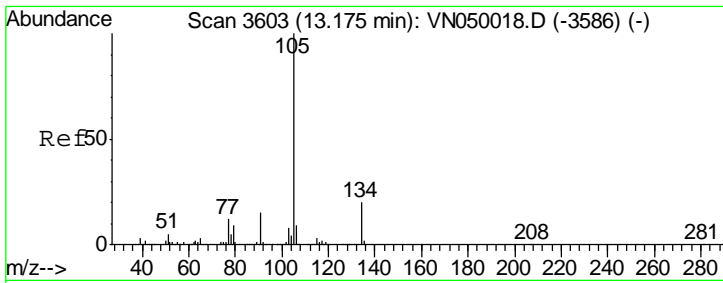
Tgt Ion	Resp	Lower	Upper
119	9794		
91	61.8	32.1	96.3
134	23.3	13.2	39.5



#84
 1,2,4-Trimethylbenzene
 Concen: 9.38 ug/l
 RT: 13.04 min Scan# 3562
 Delta R.T. 0.00 min
 Lab File: VN050245.D
 Acq: 1 Aug 2018 13:30

Tgt Ion	Resp	Lower	Upper
105	244415		
120	45.6	22.9	68.7

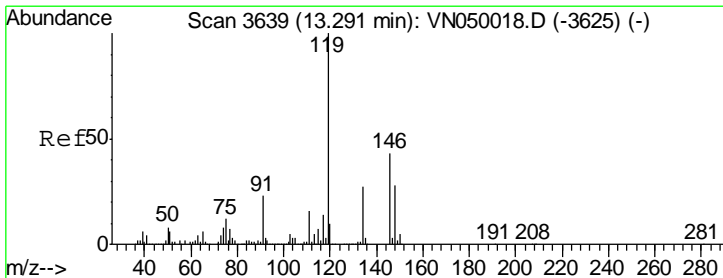
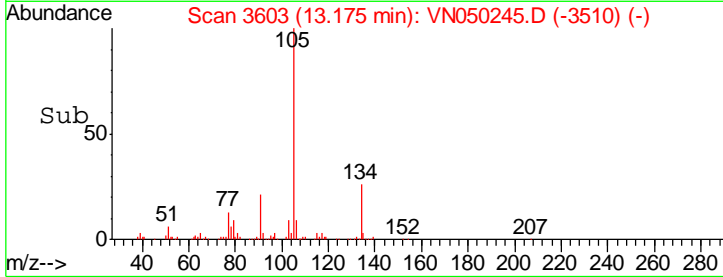
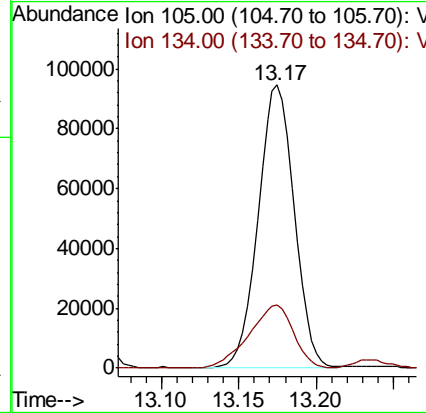
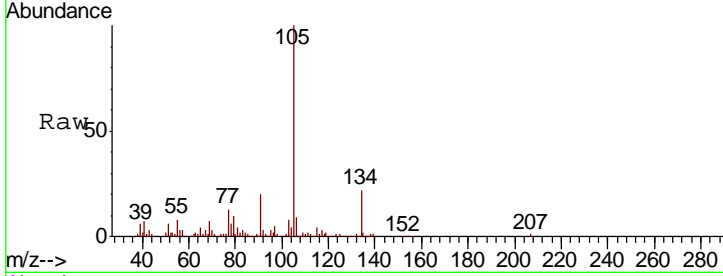




#85
 sec-Butylbenzene
 Concen: 5.06 ug/l
 RT: 13.17 min Scan# 3603
 Delta R.T. 0.00 min
 Lab File: VN050245.D
 Acq: 1 Aug 2018 13:30

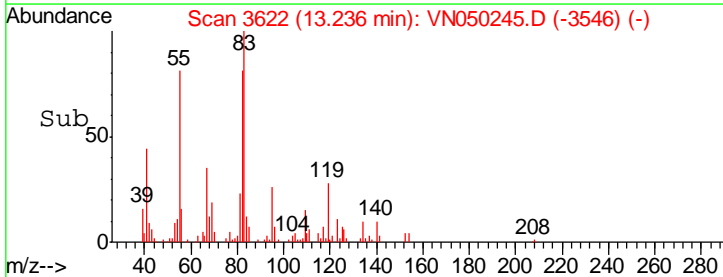
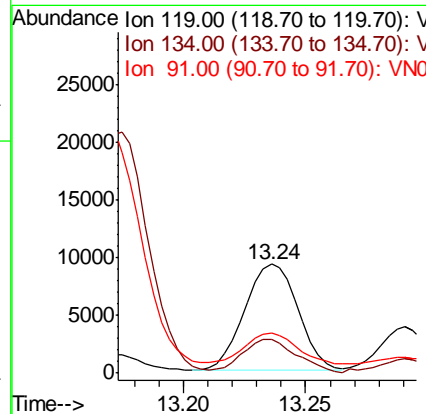
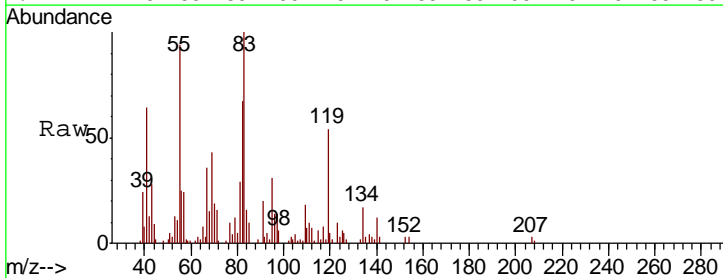
Instrument :
 MSVOA_N
 ClientSampled :
 MW-09

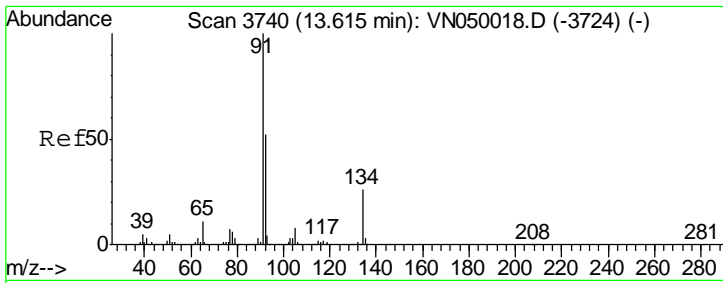
Tgt Ion	Resp	Lower	Upper
105	152624		
134	27.9	10.1	30.1



#86
 p-Isopropyltoluene
 Concen: 0.56 ug/l
 RT: 13.24 min Scan# 3622
 Delta R.T. -0.05 min
 Lab File: VN050245.D
 Acq: 1 Aug 2018 13:30

Tgt Ion	Resp	Lower	Upper
119	14140		
134	32.4	13.3	39.8
91	32.4	11.4	34.2

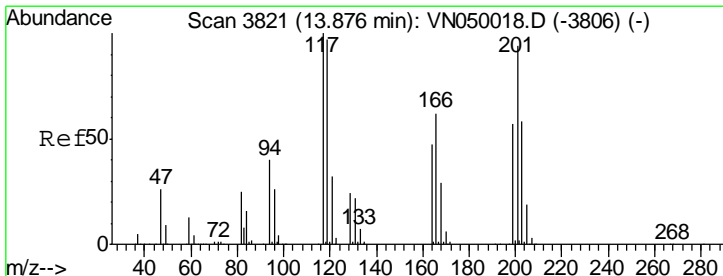
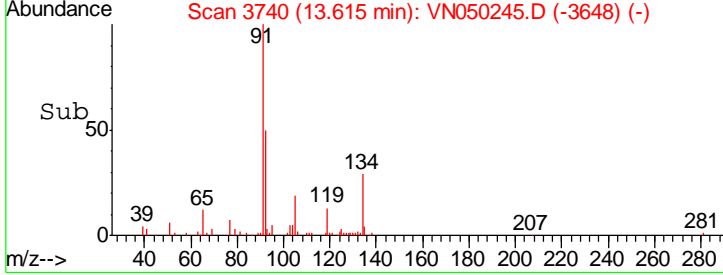
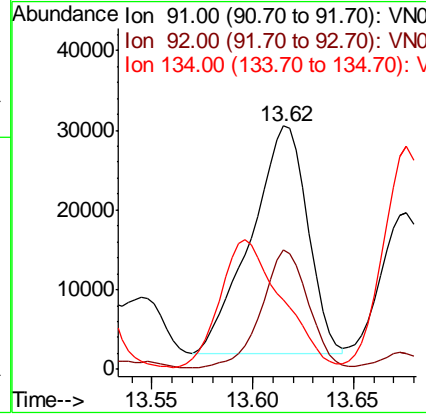
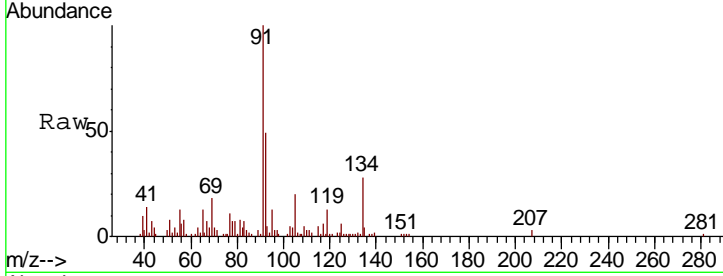




#89
 n-Butylbenzene
 Concen: 2.66 ug/l
 RT: 13.62 min Scan# 3740
 Delta R.T. -0.00 min
 Lab File: VN050245.D
 Acq: 1 Aug 2018 13:30

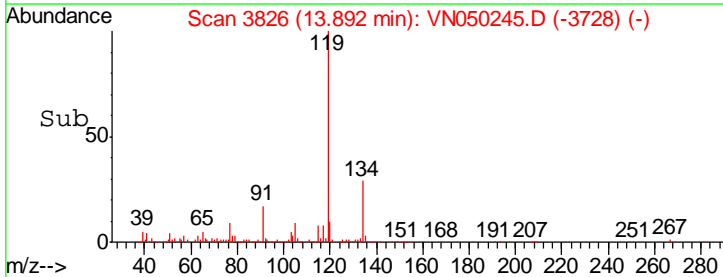
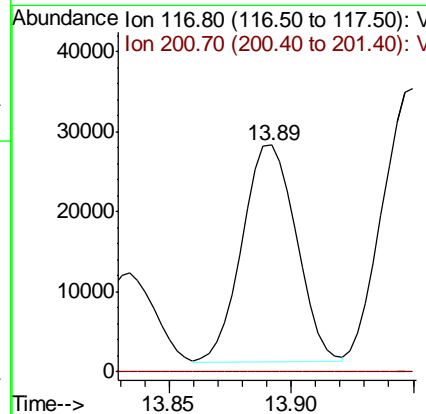
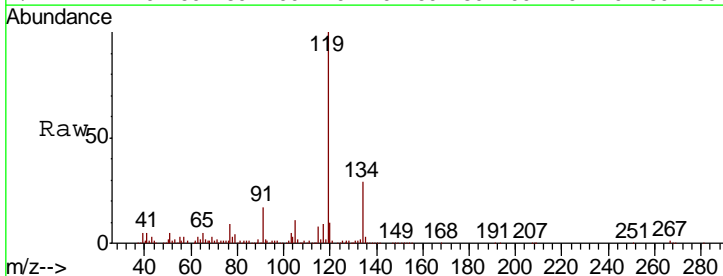
Instrument :
 MSVOA_N
 ClientSampled :
 MW-09

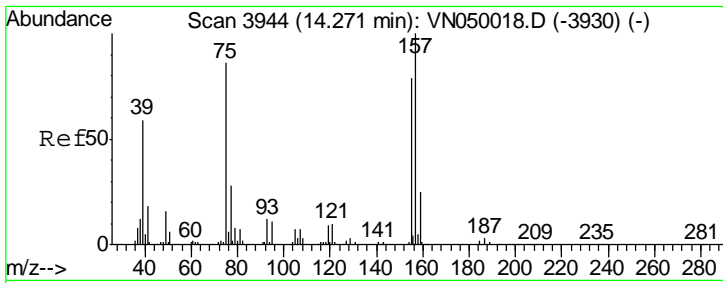
Tgt Ion	Resp	Lower	Upper
91	100		
92	42.8	25.8	77.4
134	60.7	12.8	38.4#



#90
 Hexachloroethane
 Concen: 7.34 ug/l
 RT: 13.89 min Scan# 3826
 Delta R.T. 0.02 min
 Lab File: VN050245.D
 Acq: 1 Aug 2018 13:30

Tgt Ion	Resp	Lower	Upper
117	100		
201	0.0	45.6	136.8#

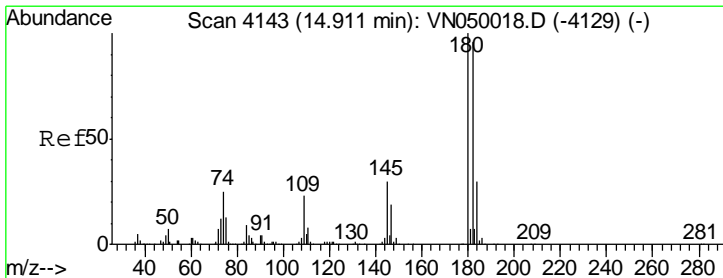
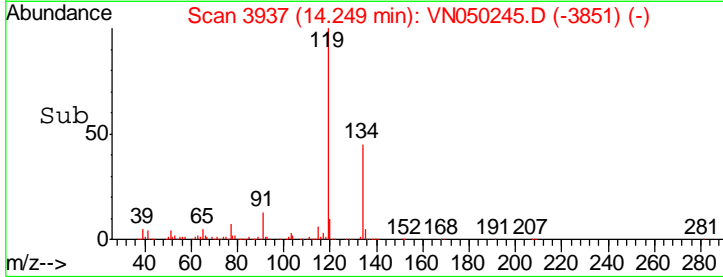
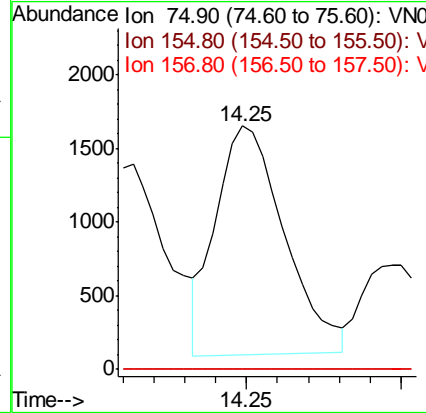
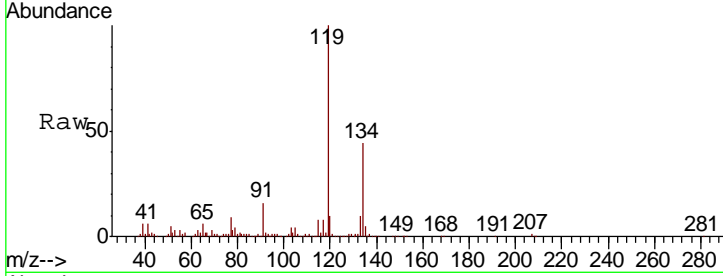




#92
 1,2-Dibromo-3-Chloropropane
 Concen: 0.84 ug/l
 RT: 14.25 min Scan# 3937
 Delta R.T. -0.02 min
 Lab File: VN050245.D
 Acq: 1 Aug 2018 13:30

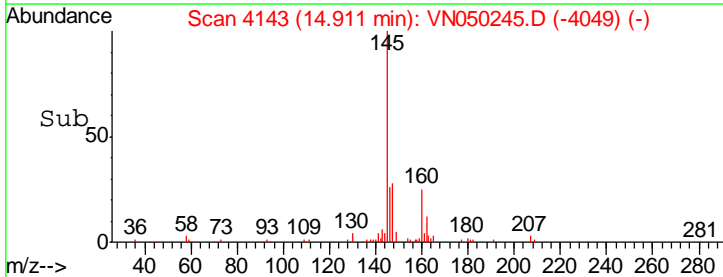
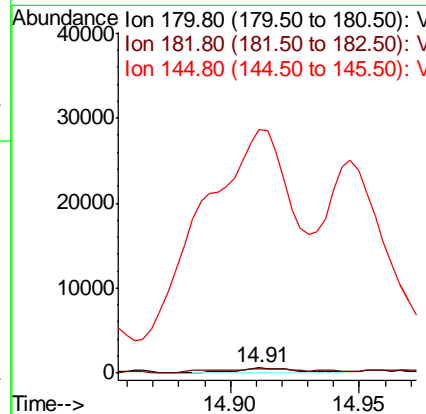
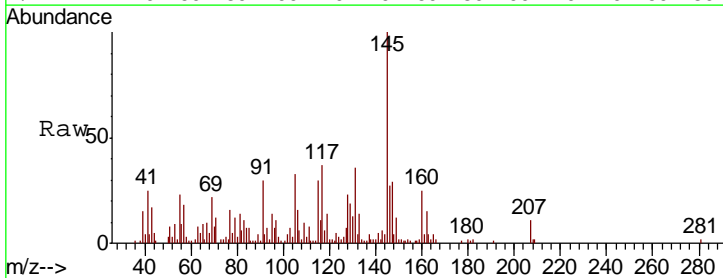
Instrument : MSVOA_N
 ClientSampled : MW-09

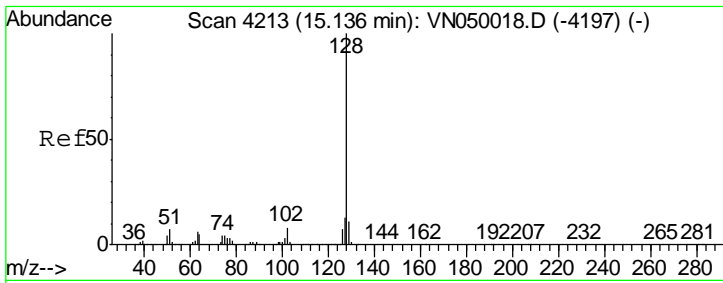
Tgt Ion	Resp	Lower	Upper
75	100		
155	0.0	44.8	134.4#
157	0.0	57.2	171.6#



#93
 1,2,4-Trichlorobenzene
 Concen: 3.21 ug/l
 RT: 14.91 min Scan# 4143
 Delta R.T. 0.00 min
 Lab File: VN050245.D
 Acq: 1 Aug 2018 13:30

Tgt Ion	Resp	Lower	Upper
180	100		
182	111.9	46.7	140.1
145	6382.7	13.8	41.4#

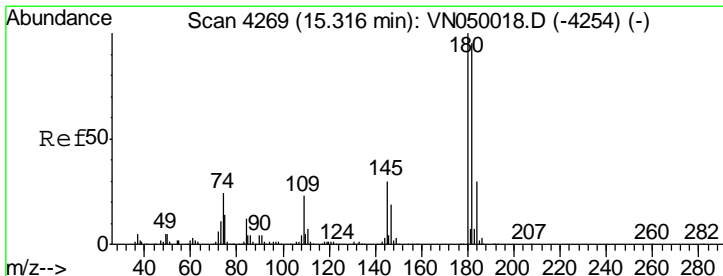
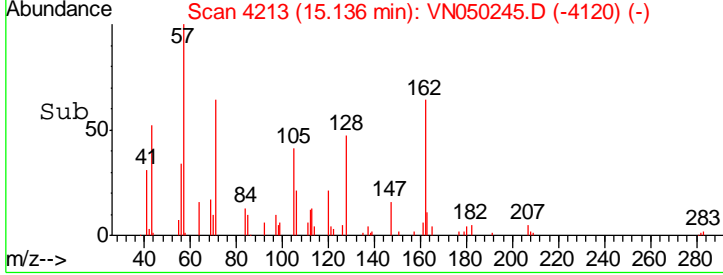
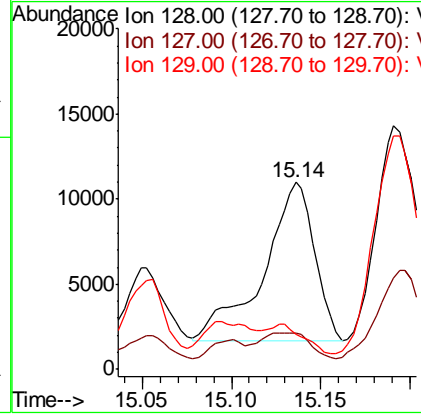
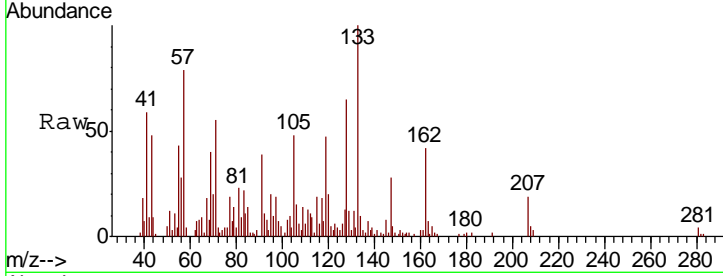




#95
 Naphthalene
 Concen: 5.28 ug/l
 RT: 15.14 min Scan# 4213
 Delta R.T. 0.00 min
 Lab File: VN050245.D
 Acq: 1 Aug 2018 13:30

Instrument : MSVOA_N
 ClientSampled : MW-09

Tgt Ion	Resp	Lower	Upper
128	18428		
127	15.8	10.4	15.6#
129	0.0	8.8	13.2#



#96
 1,2,3-Trichlorobenzene
 Concen: 2.27 ug/l
 RT: 15.33 min Scan# 4272
 Delta R.T. 0.01 min
 Lab File: VN050245.D
 Acq: 1 Aug 2018 13:30

Tgt Ion	Resp	Lower	Upper
180	562		
182	71.0	48.1	144.4
145	0.0	15.3	45.9#

