

Data Path : Z:\VOASRV\HPCHEM1\MSVOA N\DATA\VN080119\
 Data File : VN057033.D
 Acq On : 1 Aug 2019 13:38
 Operator : JC/SP
 Sample : K4097-02
 Misc : 5.00mL/MSVOA N/WATER
 ALS Vial : 12 Sample Multiplier: 1

Instrument :
 MSVOA_N
Client Sampled :
 BP-VPB203-GW-443-445

Quant Time: Aug 02 05:13:08 2019
 Quant Method : Z:\VOASRV\HPCHEM1\MSVOA_N\METHODS\82N072719W.M
 Quant Title : SW846 8260
 QLast Update : Sat Jul 27 01:33:29 2019
 Response via : Initial Calibration

Internal Standards	R.T.	QIon	Response	Conc	Units	Dev(Min)
1) Pentafluorobenzene	7.66	168	570930	50.00	ug/l	0.00
34) 1,4-Difluorobenzene	8.58	114	832694	50.00	ug/l	0.00
63) Chlorobenzene-d5	11.40	117	678711	50.00	ug/l	0.00
72) 1,4-Dichlorobenzene-d4	13.34	152	180939	50.00	ug/l	0.00

System Monitoring Compounds

33) 1,2-Dichloroethane-d4	8.02	65	327101	55.97	ug/l	0.00
Spiked Amount	50.000		Recovery	=	111.94%	
35) Dibromofluoromethane	7.58	113	298911	56.07	ug/l	0.00
Spiked Amount	50.000		Recovery	=	112.14%	
50) Toluene-d8	10.08	98	1128567	55.52	ug/l	0.00
Spiked Amount	50.000		Recovery	=	111.04%	
62) 4-Bromofluorobenzene	12.40	95	289254	43.71	ug/l	0.00
Spiked Amount	50.000		Recovery	=	87.42%	

Target Compounds

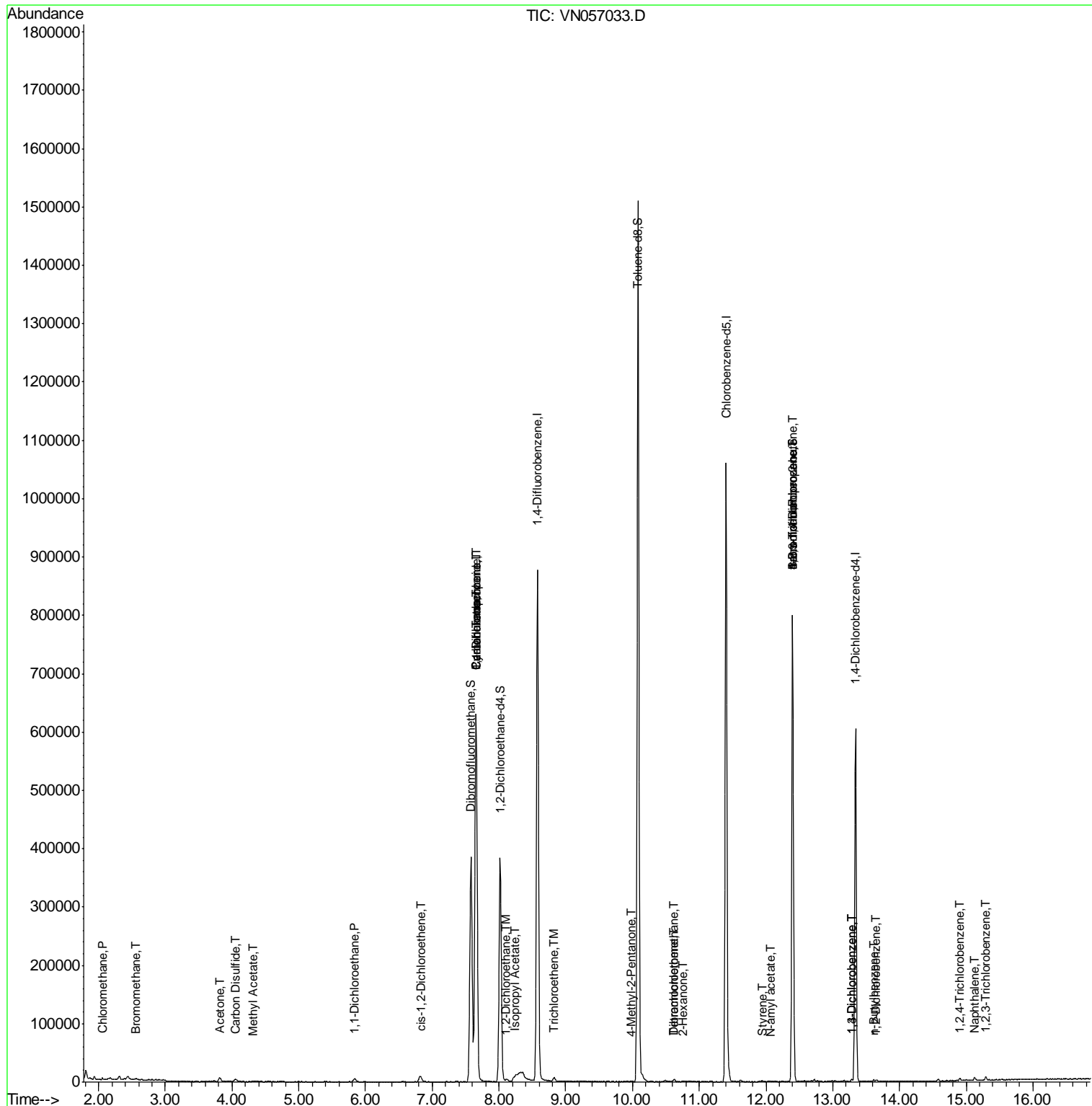
					Qvalue	
3) Chloromethane	2.06	50	2325	0.336	ug/l	99
5) Bromomethane	2.57	94	1034	0.257	ug/l	99
16) Acetone	3.81	43	11345	5.358	ug/l	95
17) Carbon Disulfide	4.04	76	3650	0.274	ug/l #	75
18) Methyl Acetate	4.32	43	3459	0.512	ug/l #	61
24) 1,1-Dichloroethane	5.83	63	7958	0.802	ug/l #	91
27) cis-1,2-Dichloroethene	6.81	96	6479	1.028	ug/l	92
31) Cyclohexane	7.65	56	9192	0.957	ug/l #	1
36) 1,1-Dichloropropene	7.65	75	35677	4.869	ug/l #	48
38) Carbon Tetrachloride	7.66	117	50728	7.319	ug/l #	17
42) 1,2-Dichloroethane	8.11	62	2586	0.366	ug/l #	72
43) Isopropyl Acetate	8.23	43	6221	0.641	ug/l #	52
44) Trichloroethene	8.83	130	3247	0.522	ug/l	91
51) 4-Methyl-2-Pentanone	9.98	43	1657	0.288	ug/l #	62
59) 2-Hexanone	10.75	43	1866	2.916	ug/l	66
60) Dibromochloromethane	10.62	129	1184	0.213	ug/l #	11
64) Tetrachloroethene	10.62	164	1281	0.219	ug/l #	92
70) Styrene	11.95	104	263	1.883	ug/l #	53
71) Bromoform	12.40	173	2476	0.681	ug/l #	1
74) N-amyl acetate	12.07	43	1207	0.266	ug/l #	57
75) 1,1,2,2-Tetrachloroethane	12.40	83	32	Below Cal	#	1
76) 1,2,3-Trichloropropane	12.40	75	131723	35.847	ug/l #	100
81) trans-1,4-Dichloro-2-buten	12.40	75	131723	115.176	ug/l #	15
87) 1,3-Dichlorobenzene	13.28	146	1598	0.257	ug/l	91
88) 1,4-Dichlorobenzene	13.28	146	1598	0.267	ug/l	91
89) n-Butylbenzene	13.61	91	2021	0.202	ug/l	94
91) 1,2-Dichlorobenzene	13.65	146	1457	0.238	ug/l	98
93) 1,2,4-Trichlorobenzene	14.91	180	2128	3.350	ug/l	89
94) Hexachlorobutadiene	15.01	225	447	Below Cal		81
95) Naphthalene	15.13	128	5342	4.233	ug/l #	92
96) 1,2,3-Trichlorobenzene	15.30	180	2816	2.898	ug/l	94

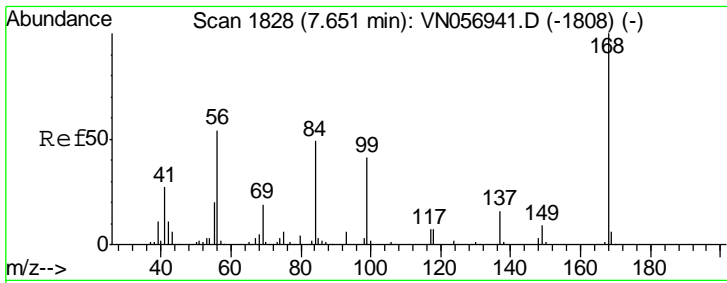
(#) = qualifier out of range (m) = manual integration (+) = signals summed

Data Path : Z:\VOASRV\HPCHEM1\MSVOA N\DATA\VN080119\
 Data File : VN057033.D
 Acq On : 1 Aug 2019 13:38
 Operator : JC/SP
 Sample : K4097-02
 Misc : 5.00mL/MSVOA N/WATER
 ALS Vial : 12 Sample Multiplier: 1

Instrument :
 MSVOA_N
Client Sample ID :
 BP-VPB203-GW-443-445

Quant Time: Aug 02 05:13:08 2019
 Quant Method : Z:\VOASRV\HPCHEM1\MSVOA_N\METHODS\82N072719W.M
 Quant Title : SW846 8260
 QLast Update : Sat Jul 27 01:33:29 2019
 Response via : Initial Calibration

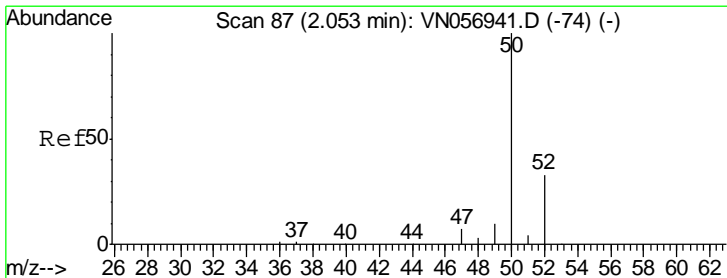
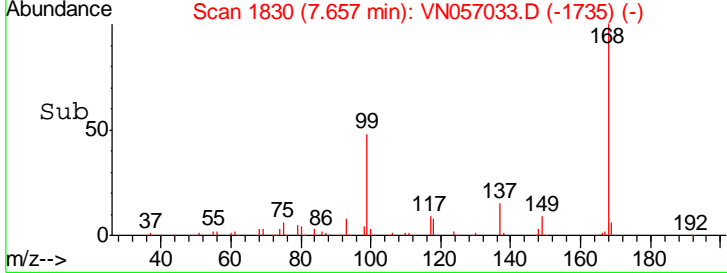
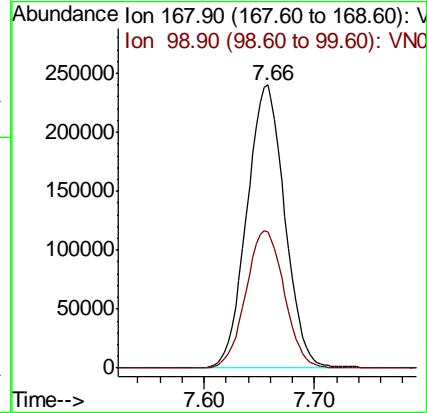
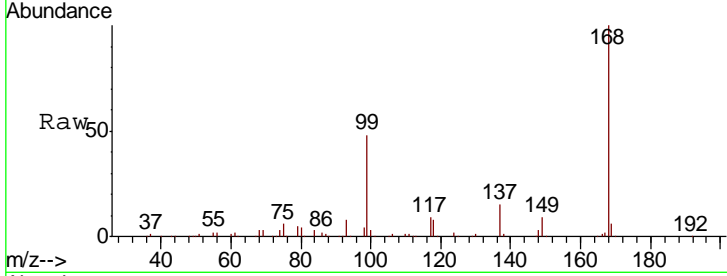




#1
 Pentafluorobenzene
 Concen: 50.000 ug/l
 RT: 7.66 min Scan# 1830
 Delta R.T. 0.01 min
 Lab File: VN057033.D
 Acq: 1 Aug 2019 13:38

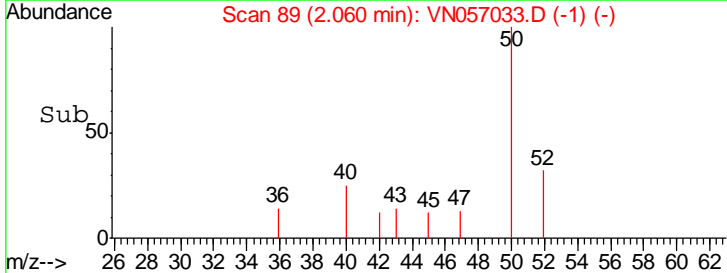
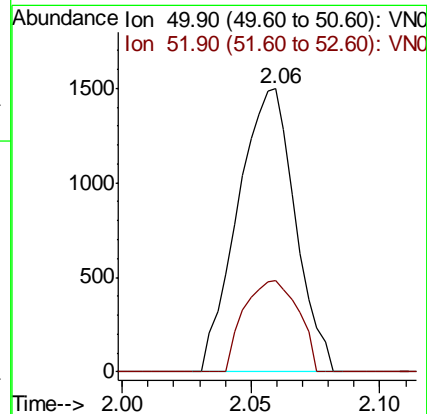
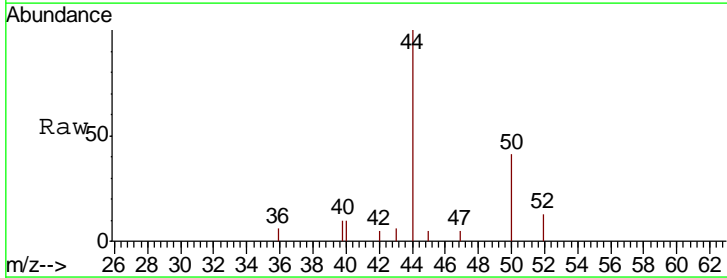
Instrument :
 MSVOA_N
 ClientSampled :
 BP-VPB203-GW-443-445

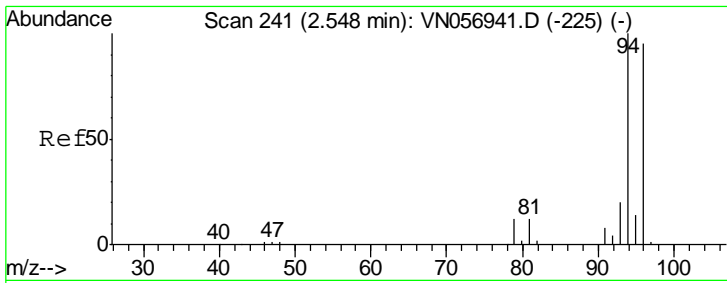
Tot Ion:168 Resp: 570930
 Ion Ratio Lower Upper
 168 100
 99 47.9 39.0 58.4



#3
 Chloromethane
 Concen: 0.336 ug/l
 RT: 2.06 min Scan# 89
 Delta R.T. 0.01 min
 Lab File: VN057033.D
 Acq: 1 Aug 2019 13:38

Tgt Ion: 50 Resp: 2325
 Ion Ratio Lower Upper
 50 100
 52 32.3 26.2 39.2

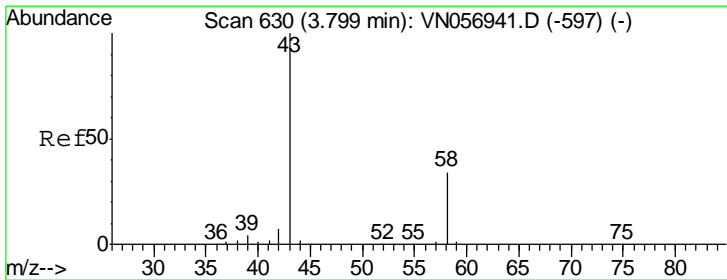
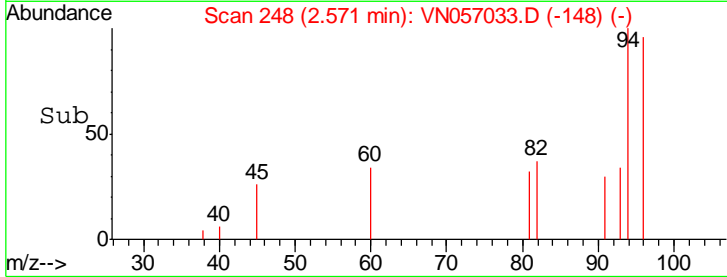
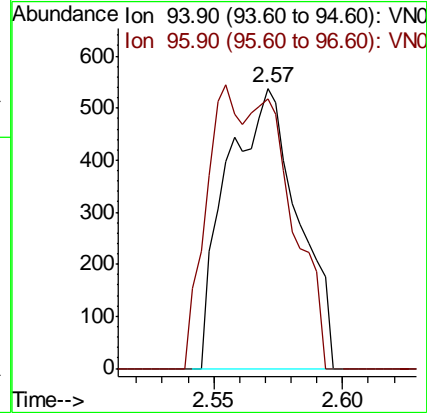
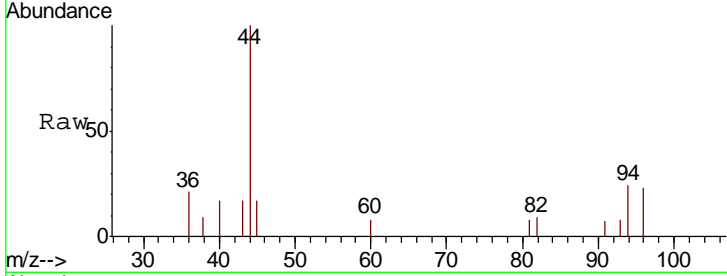




#5
 Bromomethane
 Concen: 0.257 ug/l
 RT: 2.57 min Scan# 248
 Delta R.T. 0.02 min
 Lab File: VN057033.D
 Acq: 1 Aug 2019 13:38

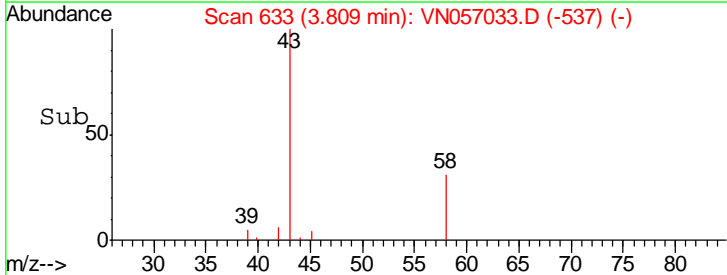
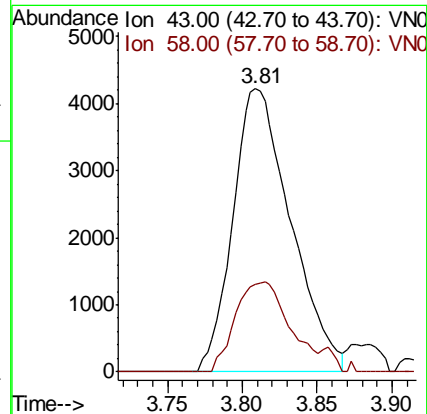
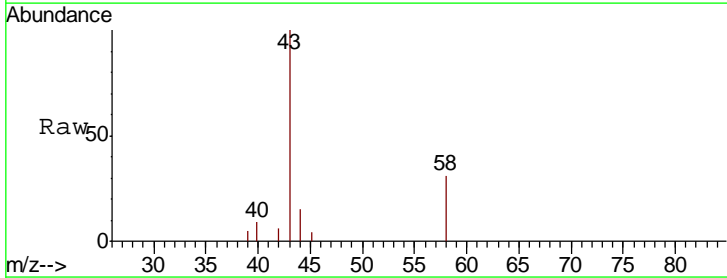
Instrument :
 MSVOA_N
 ClientSampled :
 BP-VPB203-GW-443-445

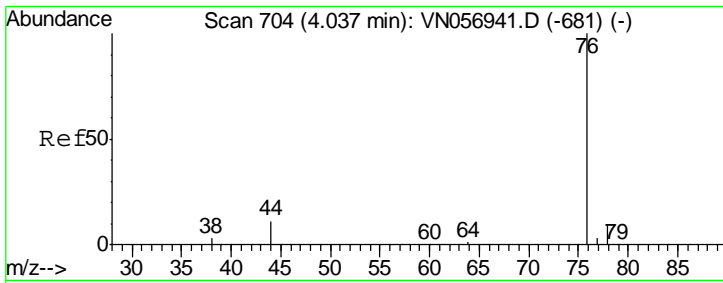
Tgt Ion: 94 Resp: 1034
 Ion Ratio Lower Upper
 94 100
 96 96.1 76.2 114.2



#16
 Acetone
 Concen: 5.358 ug/l
 RT: 3.81 min Scan# 633
 Delta R.T. 0.01 min
 Lab File: VN057033.D
 Acq: 1 Aug 2019 13:38

Tgt Ion: 43 Resp: 11345
 Ion Ratio Lower Upper
 43 100
 58 31.0 27.2 40.8

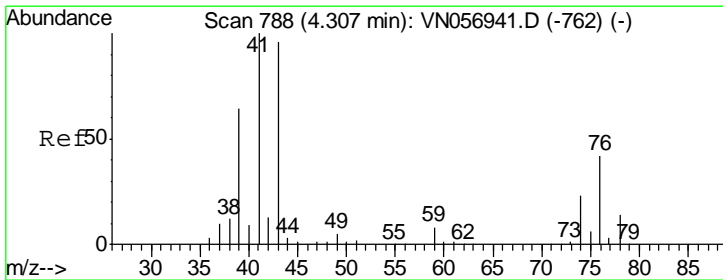
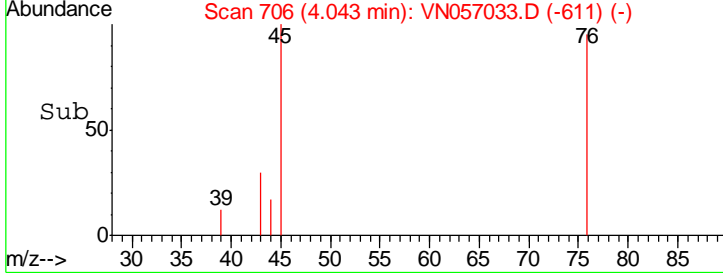
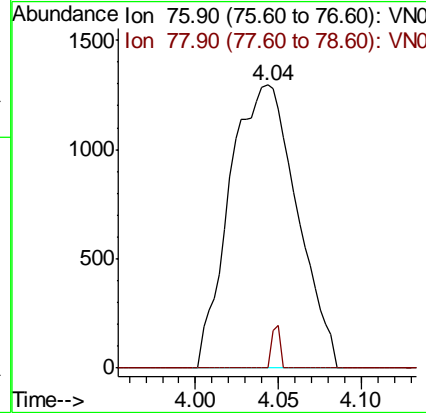
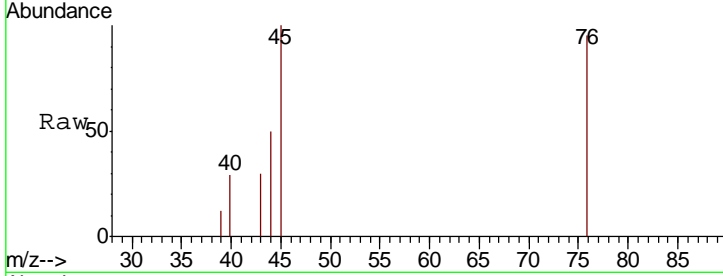




#17
 Carbon Disulfide
 Concen: 0.274 ug/l
 RT: 4.04 min Scan# 706
 Delta R.T. 0.01 min
 Lab File: VN057033.D
 Acq: 1 Aug 2019 13:38

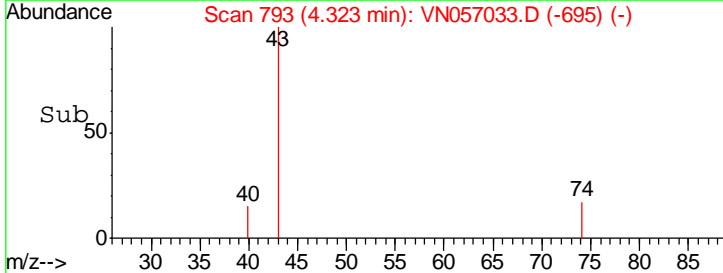
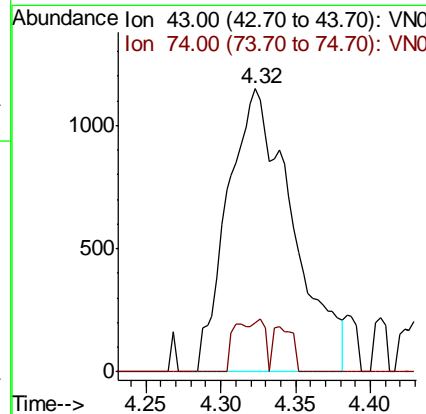
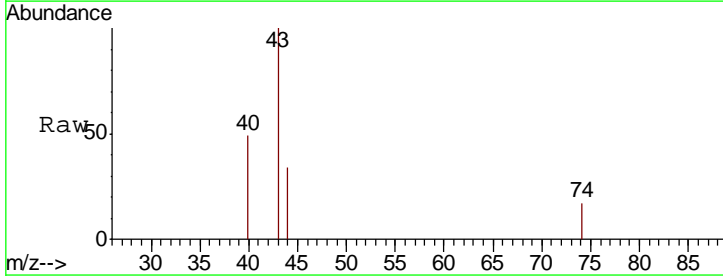
Instrument :
 MSVOA_N
ClientSampled :
 BP-VPB203-GW-443-445

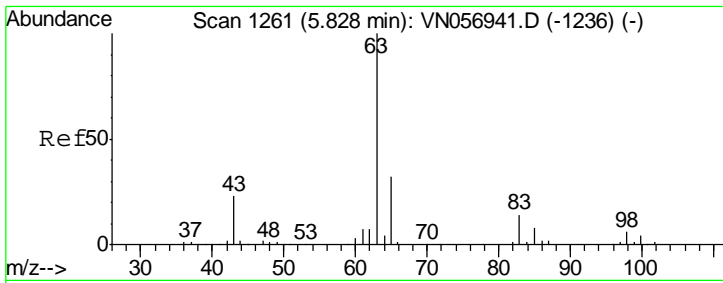
Tgt Ion	Resp	Lower	Upper
76	100		
78	0.0	7.2	10.8#



#18
 Methyl Acetate
 Concen: 0.512 ug/l
 RT: 4.32 min Scan# 793
 Delta R.T. 0.02 min
 Lab File: VN057033.D
 Acq: 1 Aug 2019 13:38

Tgt Ion	Resp	Lower	Upper
43	100		
74	5.1	19.7	29.5#

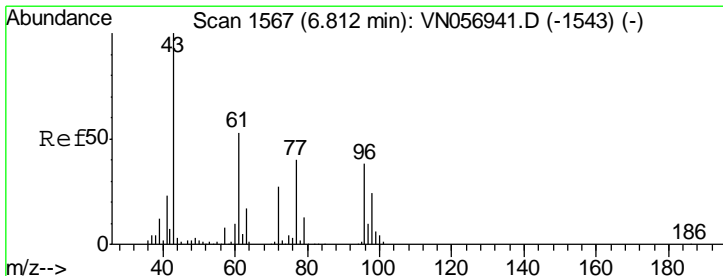
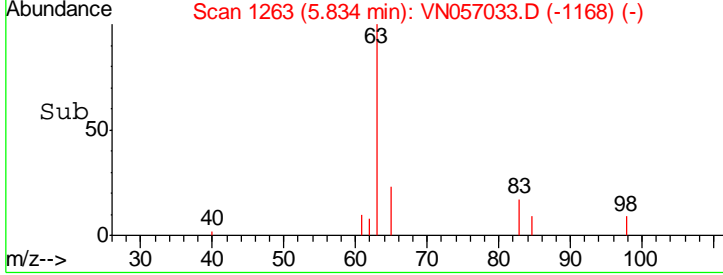
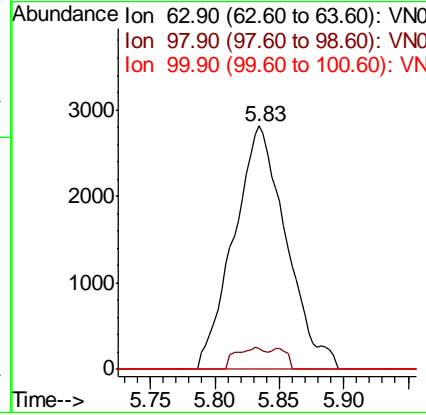
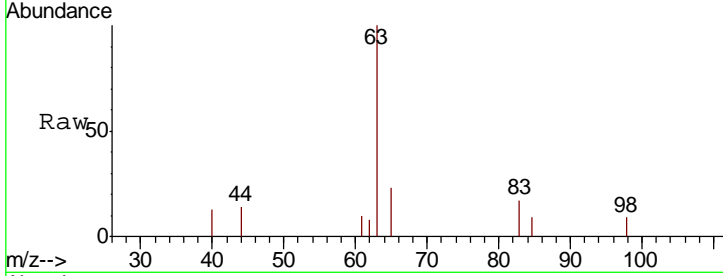




#24
 1,1-Dichloroethane
 Concen: 0.802 ug/l
 RT: 5.83 min Scan# 1263
 Delta R.T. 0.01 min
 Lab File: VN057033.D
 Acq: 1 Aug 2019 13:38

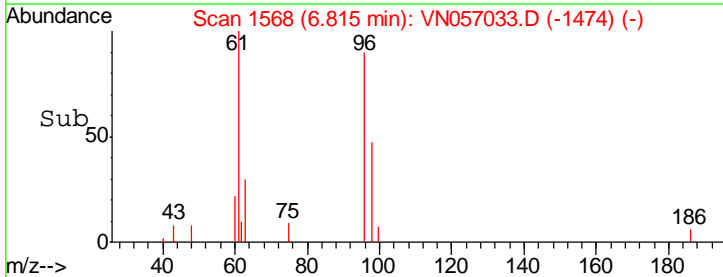
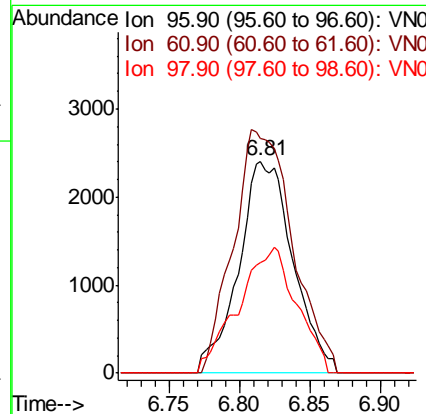
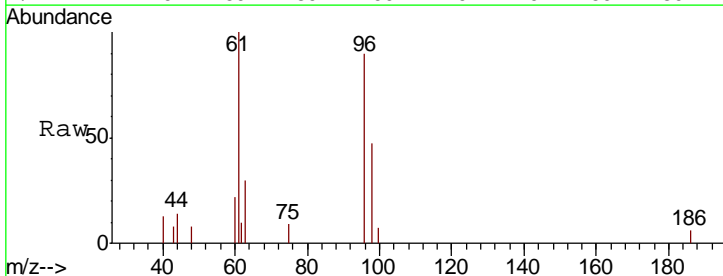
Instrument :
 MSVOA_N
 ClientSampled :
 BP-VPB203-GW-443-445

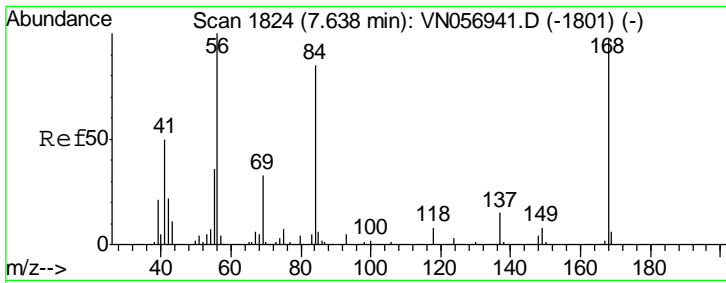
Tgt Ion	Resp	Lower	Upper
63	100		
98	8.8	3.2	9.6
100	0.0	2.1	6.3#



#27
 cis-1,2-Dichloroethene
 Concen: 1.028 ug/l
 RT: 6.81 min Scan# 1568
 Delta R.T. 0.00 min
 Lab File: VN057033.D
 Acq: 1 Aug 2019 13:38

Tgt Ion	Resp	Lower	Upper
96	100		
61	124.7	0.0	277.2
98	63.5	0.0	128.4

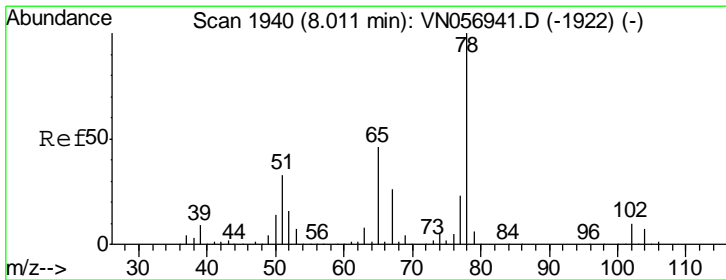
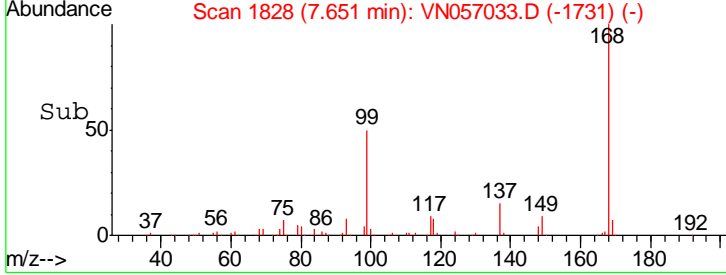
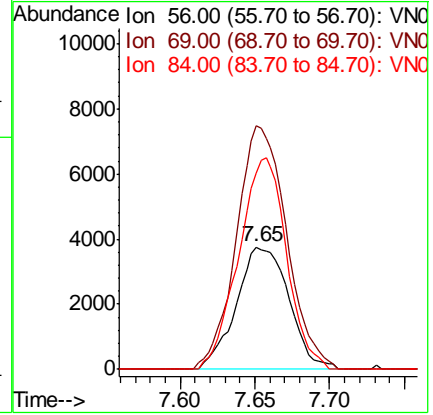
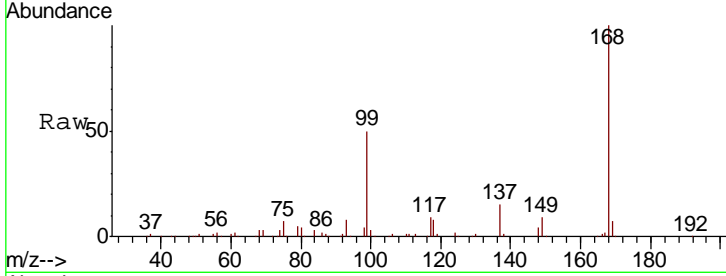




#31
 Cyclohexane
 Concen: 0.957 ug/l
 RT: 7.65 min Scan# 1828
 Delta R.T. 0.01 min
 Lab File: VN057033.D
 Acq: 1 Aug 2019 13:38

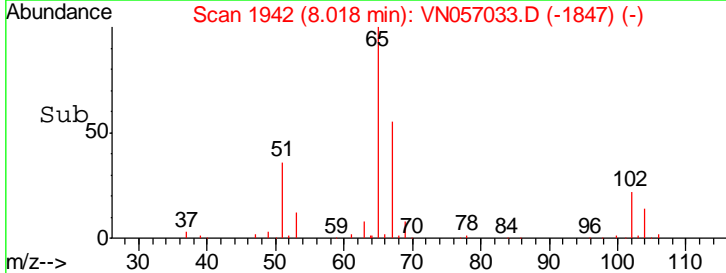
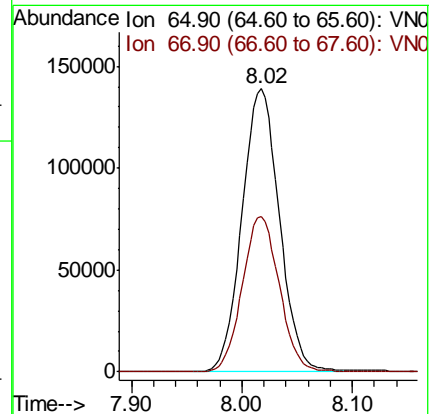
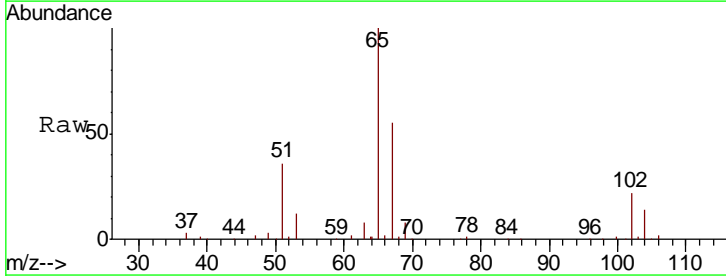
Instrument :
 MSVOA_N
 ClientSampleId :
 BP-VPB203-GW-443-445

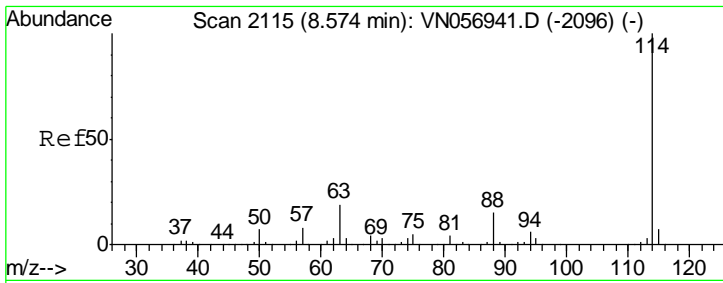
Tgt Ion	Resp	Lower	Upper
56	100		
69	199.1	26.2	39.2#
84	160.9	68.2	102.2#



#33
 1,2-Dichloroethane-d4
 Concen: 55.969 ug/l
 RT: 8.02 min Scan# 1942
 Delta R.T. 0.01 min
 Lab File: VN057033.D
 Acq: 1 Aug 2019 13:38

Tgt Ion	Resp	Lower	Upper
65	100		
67	54.4	0.0	112.0

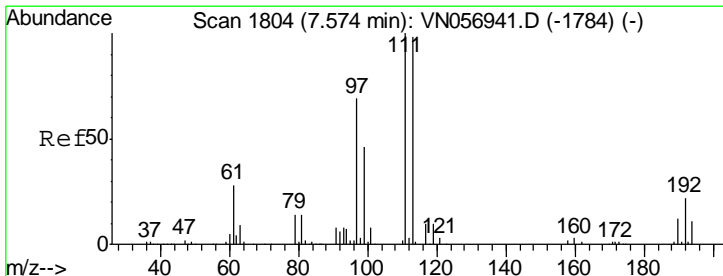
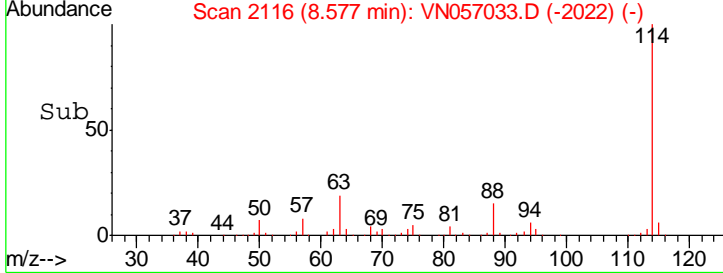
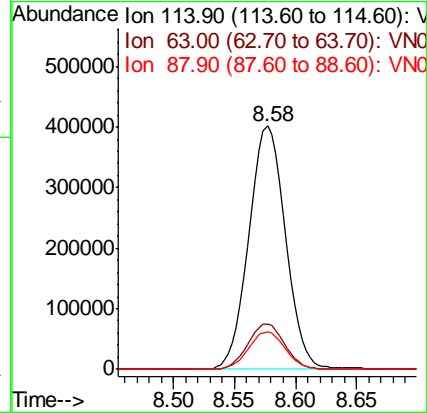
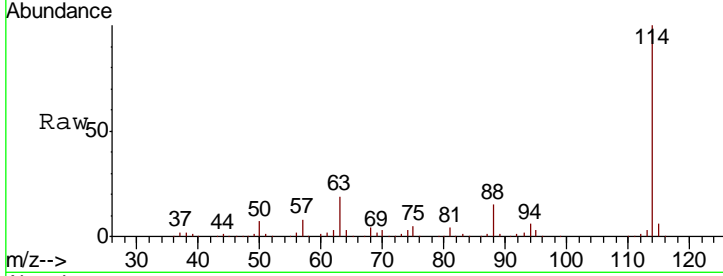




#34
 1,4-Difluorobenzene
 Concen: 50.000 ug/l
 RT: 8.58 min Scan# 2116
 Delta R.T. 0.00 min
 Lab File: VN057033.D
 Acq: 1 Aug 2019 13:38

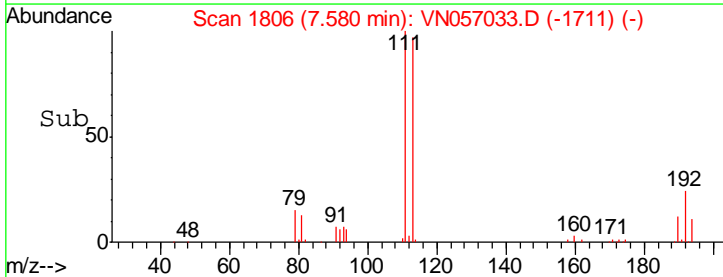
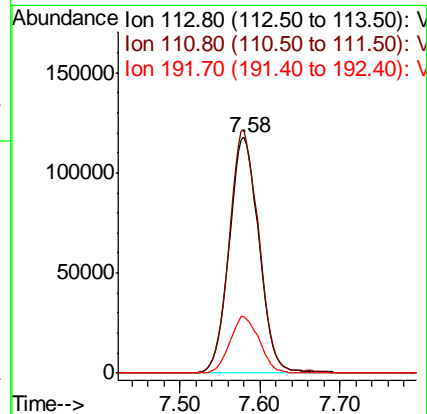
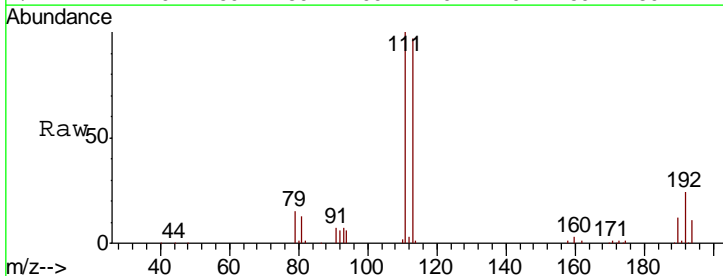
Instrument :
 MSVOA_N
 ClientSampled :
 BP-VPB203-GW-443-445

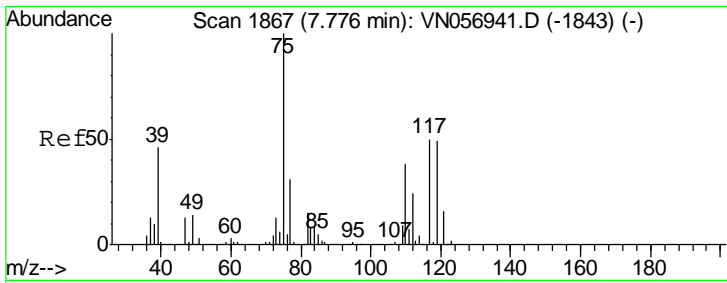
Tgt Ion	Resp	Lower	Upper
114	100		
63	18.7	0.0	38.0
88	15.2	0.0	30.0



#35
 Dibromofluoromethane
 Concen: 56.074 ug/l
 RT: 7.58 min Scan# 1806
 Delta R.T. 0.01 min
 Lab File: VN057033.D
 Acq: 1 Aug 2019 13:38

Tgt Ion	Resp	Lower	Upper
113	100		
111	101.5	82.0	123.0
192	23.7	18.4	27.6

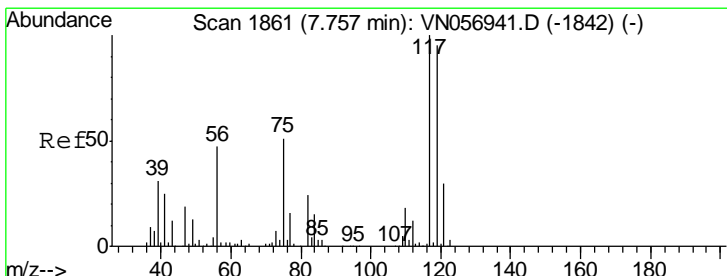
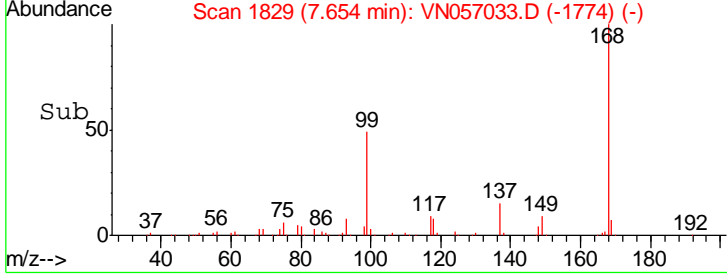
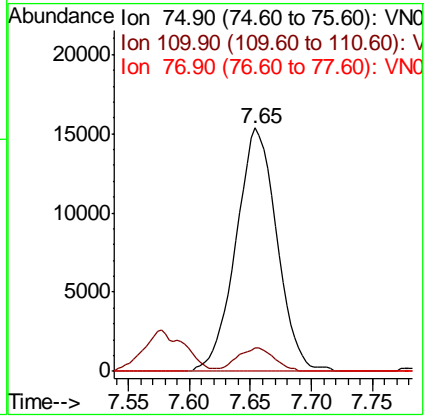
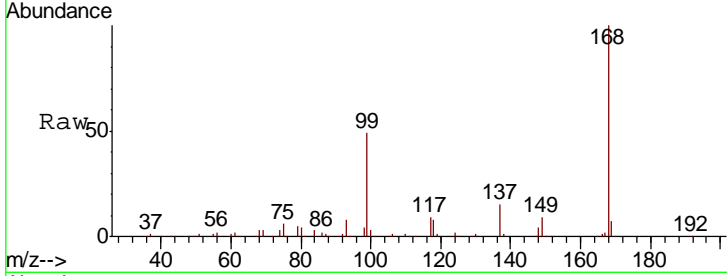




#36
 1,1-Dichloropropene
 Concen: 4.869 ug/l
 RT: 7.65 min Scan# 1829
 Delta R.T. -0.12 min
 Lab File: VN057033.D
 Acq: 1 Aug 2019 13:38

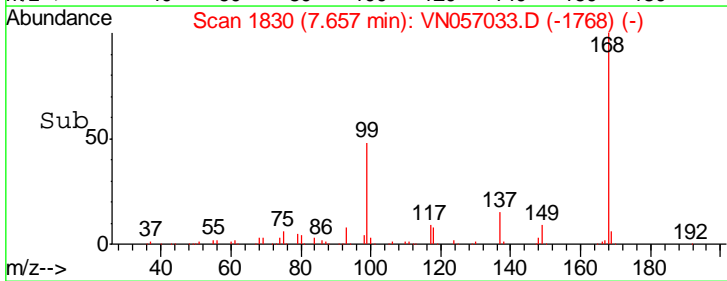
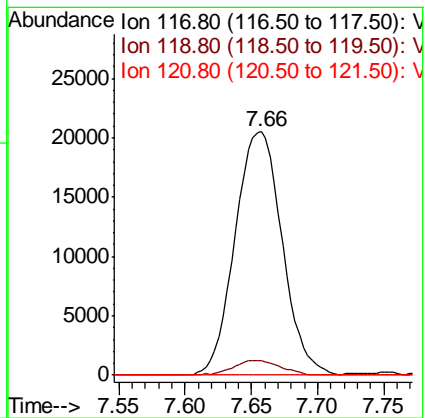
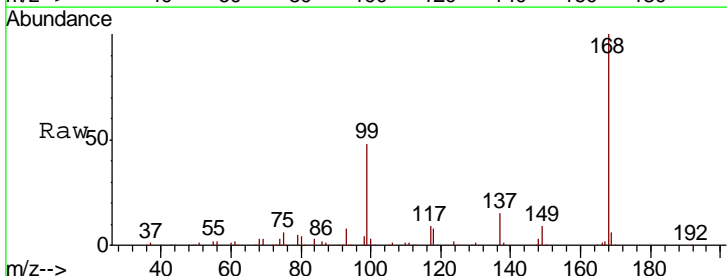
Instrument :
 MSVOA_N
ClientSampled :
 BP-VPB203-GW-443-445

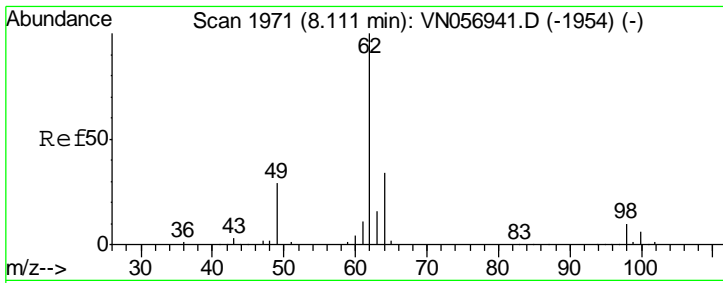
Tgt Ion	Resp	Lower	Upper
75	100		
110	8.7	18.6	55.8#
77	0.0	25.2	37.8#



#38
 Carbon Tetrachloride
 Concen: 7.319 ug/l
 RT: 7.66 min Scan# 1830
 Delta R.T. -0.10 min
 Lab File: VN057033.D
 Acq: 1 Aug 2019 13:38

Tgt Ion	Resp	Lower	Upper
117	100		
119	5.8	75.3	112.9#
121	0.0	24.2	36.4#

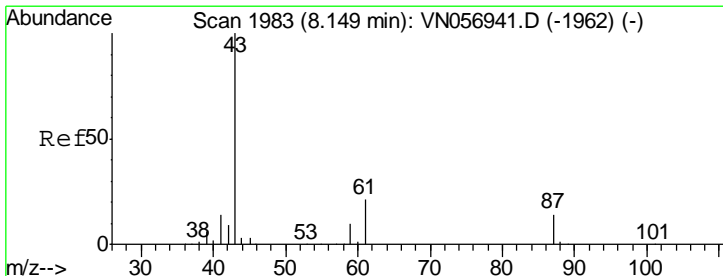
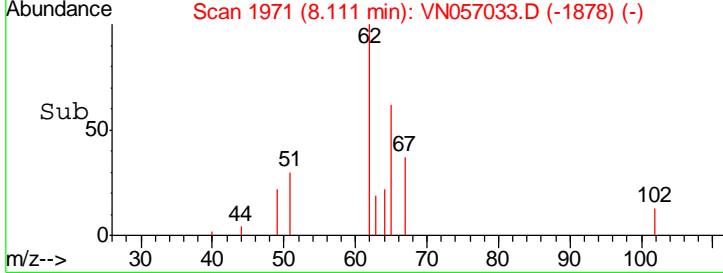
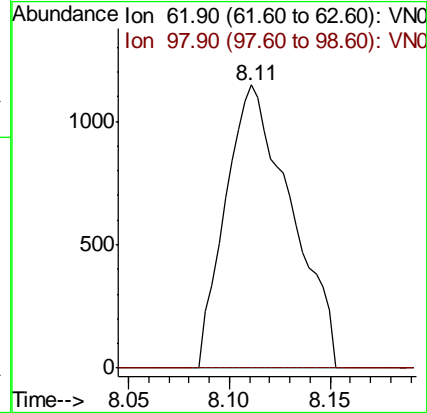
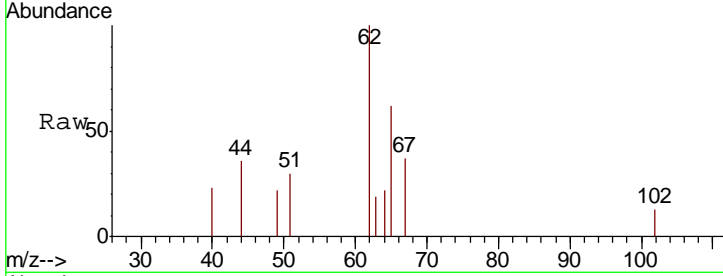




#42
 1,2-Dichloroethane
 Concen: 0.366 ug/l
 RT: 8.11 min Scan# 1971
 Delta R.T. 0.00 min
 Lab File: VN057033.D
 Acq: 1 Aug 2019 13:38

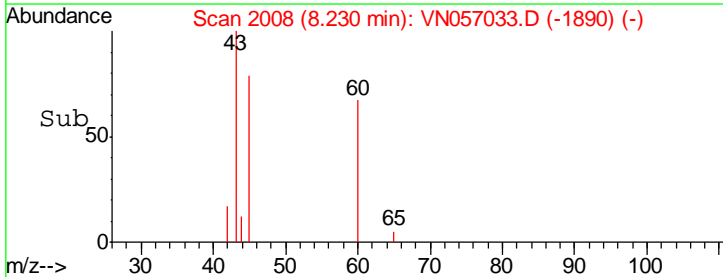
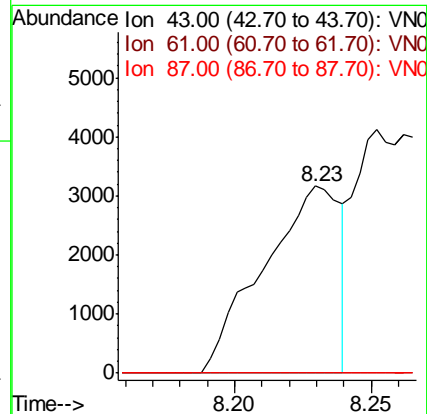
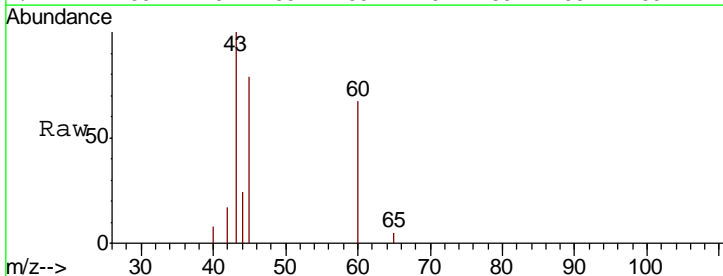
Instrument :
 MSVOA_N
 ClientSampled :
 BP-VPB203-GW-443-445

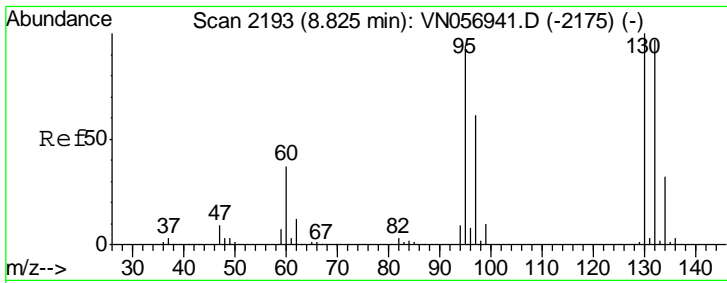
Tgt Ion	Resp	Lower	Upper
62	100		
98	0.0	0.0	20.6



#43
 Isopropyl Acetate
 Concen: 0.641 ug/l
 RT: 8.23 min Scan# 2008
 Delta R.T. 0.08 min
 Lab File: VN057033.D
 Acq: 1 Aug 2019 13:38

Tgt Ion	Resp	Lower	Upper
43	100		
61	0.0	23.0	34.6#
87	0.0	11.7	17.5#

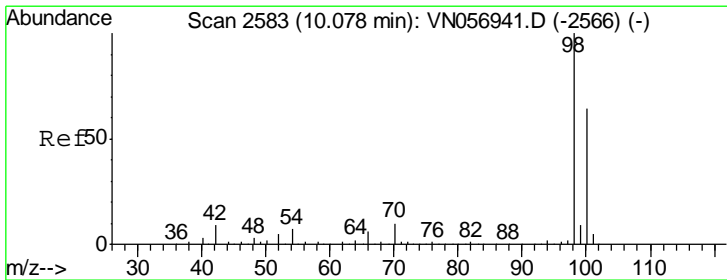
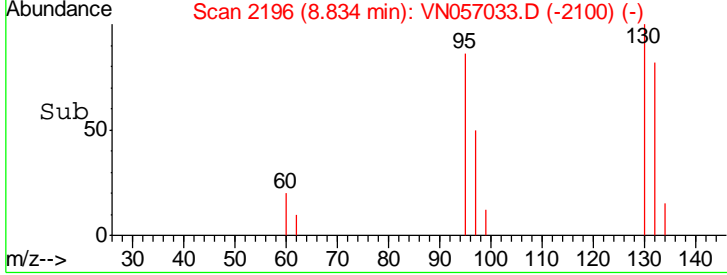
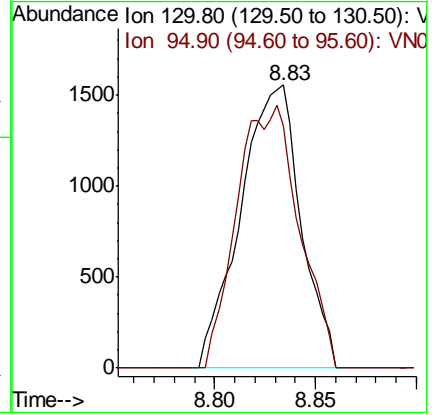
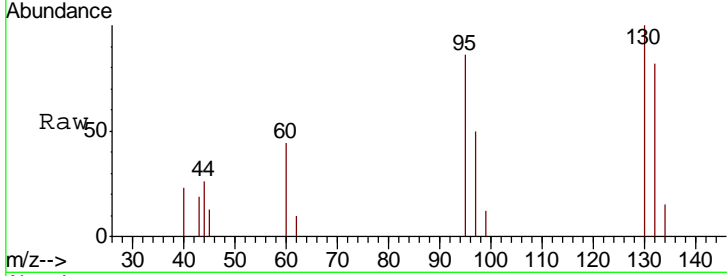




#44
 Trichloroethene
 Concen: 0.522 ug/l
 RT: 8.83 min Scan# 2196
 Delta R.T. 0.01 min
 Lab File: VN057033.D
 Acq: 1 Aug 2019 13:38

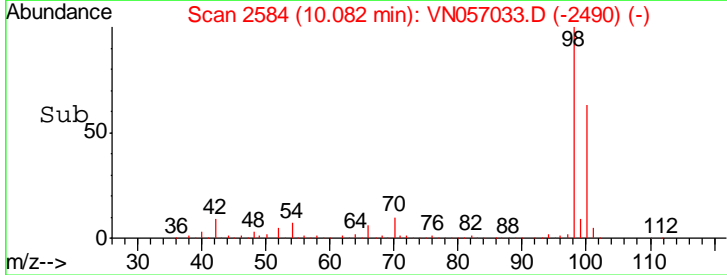
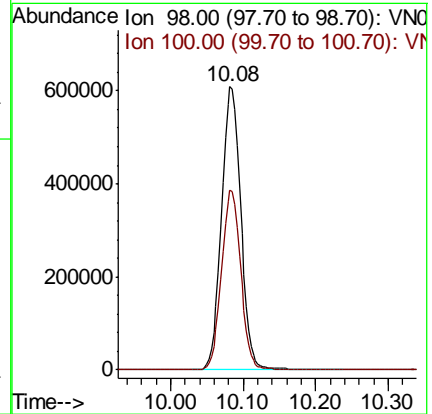
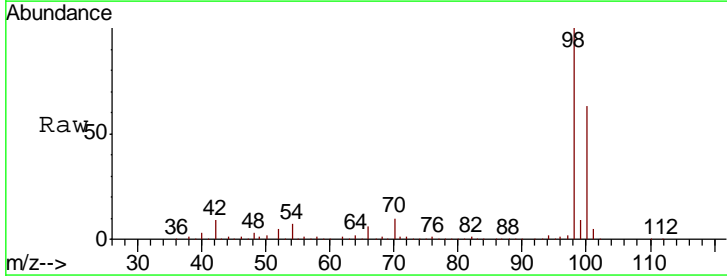
Instrument :
 MSVOA_N
ClientSampled :
 BP-VPB203-GW-443-445

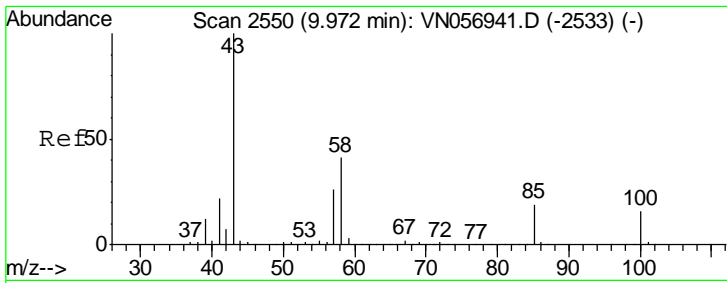
Tgt Ion: 130 Resp: 3247
 Ion Ratio Lower Upper
 130 100
 95 85.6 0.0 189.0



#50
 Toluene-d8
 Concen: 55.517 ug/l
 RT: 10.08 min Scan# 2584
 Delta R.T. 0.00 min
 Lab File: VN057033.D
 Acq: 1 Aug 2019 13:38

Tgt Ion: 98 Resp: 1128567
 Ion Ratio Lower Upper
 98 100
 100 63.3 51.3 76.9

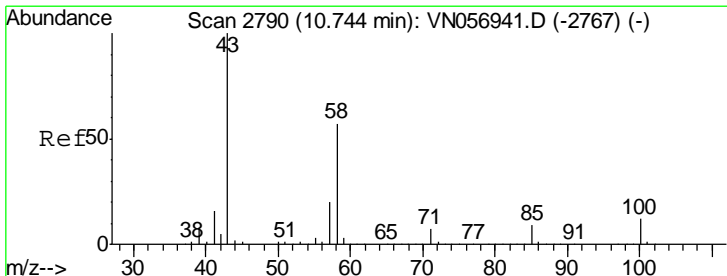
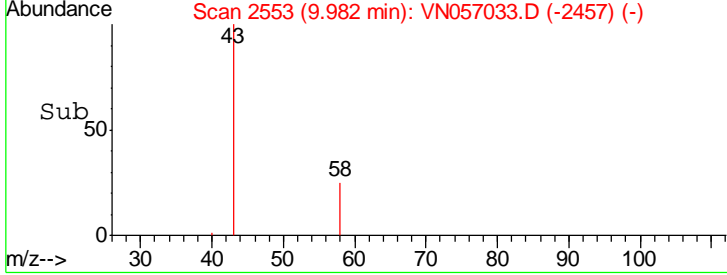
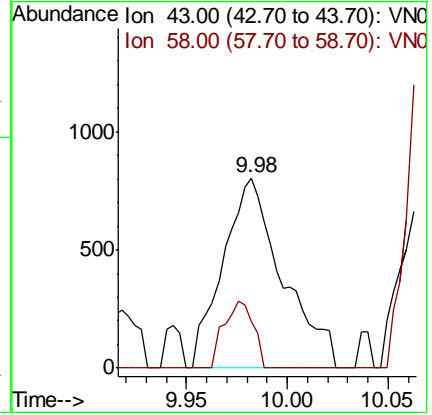
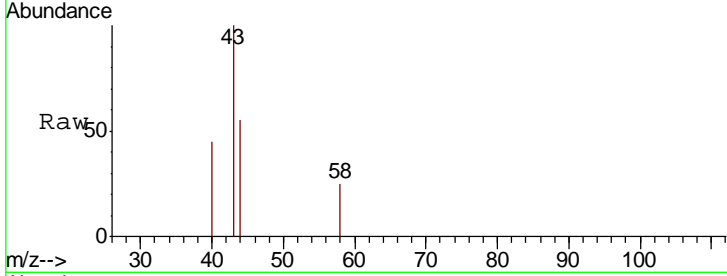




#51
 4-Methyl-2-Pentanone
 Concen: 0.288 ug/l
 RT: 9.98 min Scan# 2553
 Delta R.T. 0.01 min
 Lab File: VN057033.D
 Acq: 1 Aug 2019 13:38

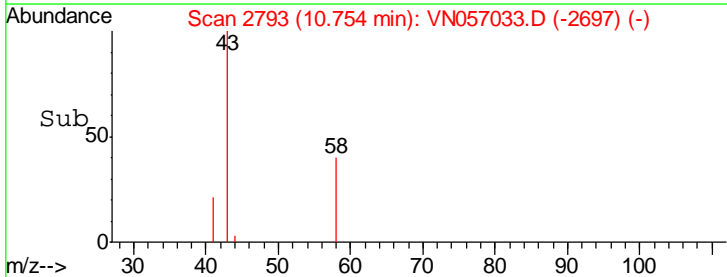
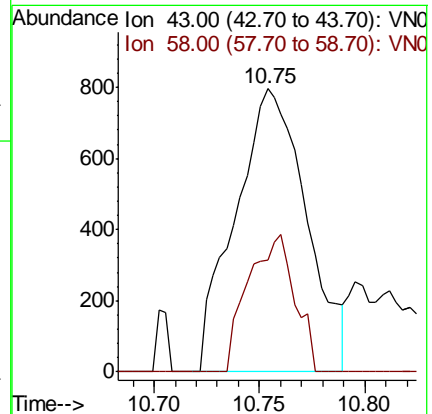
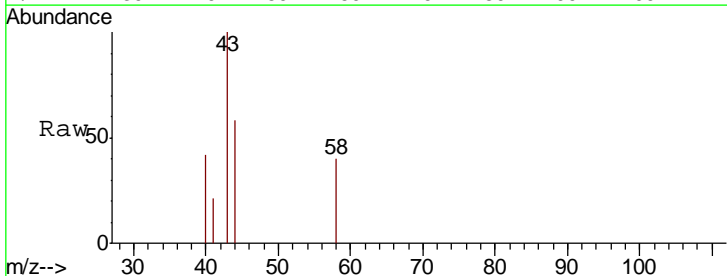
Instrument :
 MSVOA_N
 ClientSampled :
 BP-VPB203-GW-443-445

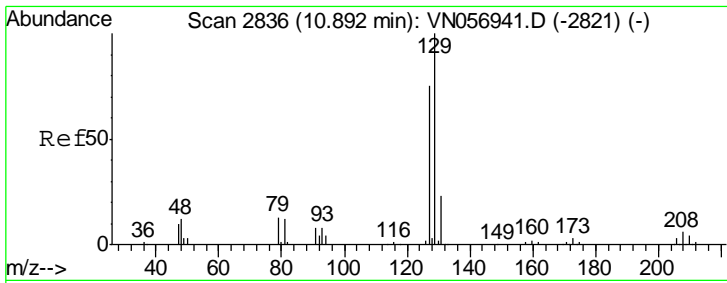
Tgt Ion: 43 Resp: 1657
 Ion Ratio Lower Upper
 43 100
 58 17.4 33.1 49.7#



#59
 2-Hexanone
 Concen: 2.916 ug/l
 RT: 10.75 min Scan# 2793
 Delta R.T. 0.01 min
 Lab File: VN057033.D
 Acq: 1 Aug 2019 13:38

Tgt Ion: 43 Resp: 1866
 Ion Ratio Lower Upper
 43 100
 58 31.9 28.5 85.5

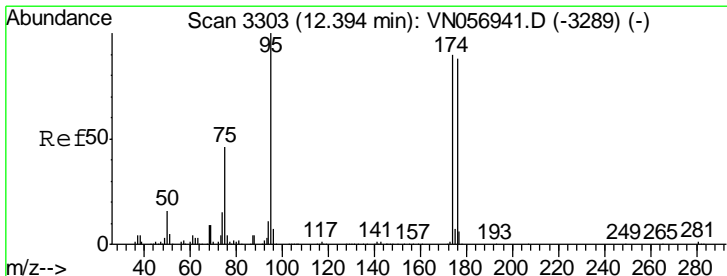
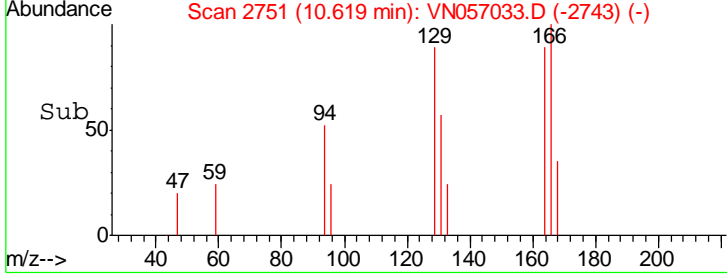
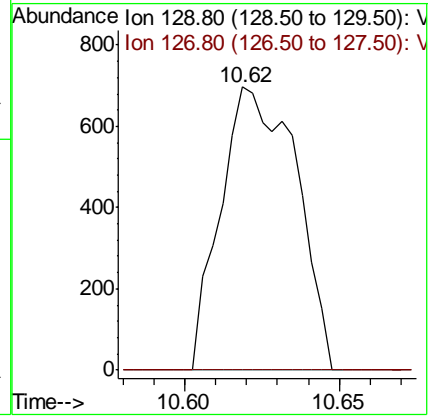
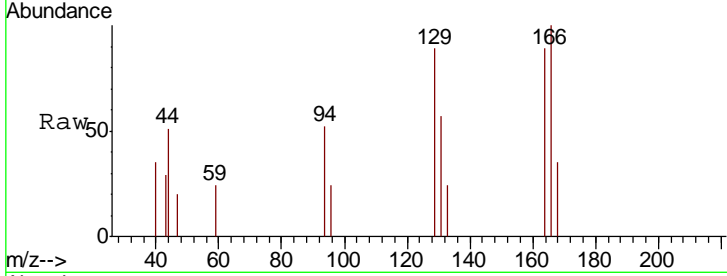




#60
 Dibromochloromethane
 Concen: 0.213 ug/l
 RT: 10.62 min Scan# 2751
 Delta R.T. -0.27 min
 Lab File: VN057033.D
 Acq: 1 Aug 2019 13:38

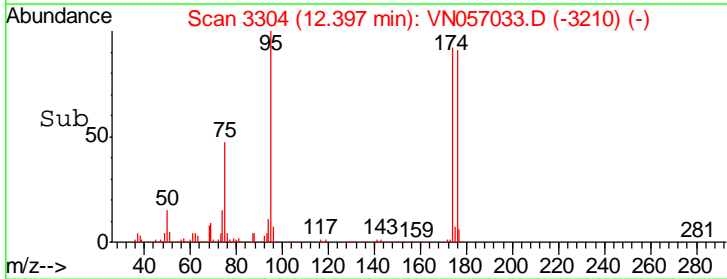
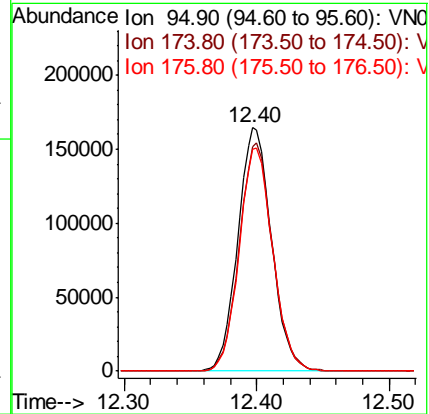
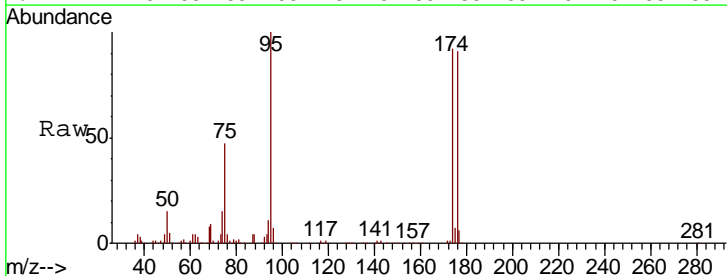
Instrument : MSVOA_N
 ClientSampled : BP-VPB203-GW-443-445

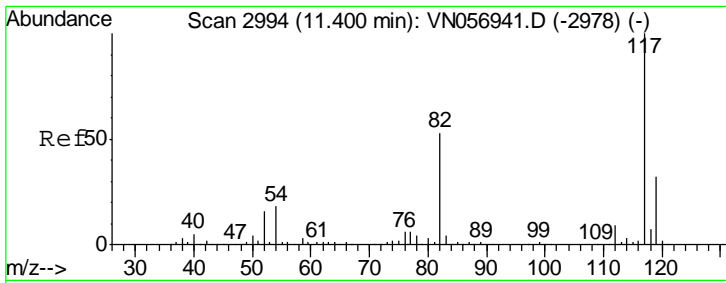
Tgt Ion	Resp	Lower	Upper
129	1184		
127	0.0	38.0	113.9#



#62
 4-Bromofluorobenzene
 Concen: 43.709 ug/l
 RT: 12.40 min Scan# 3304
 Delta R.T. 0.00 min
 Lab File: VN057033.D
 Acq: 1 Aug 2019 13:38

Tgt Ion	Resp	Lower	Upper
95	289254		
174	92.9	0.0	182.2
176	91.4	0.0	179.4

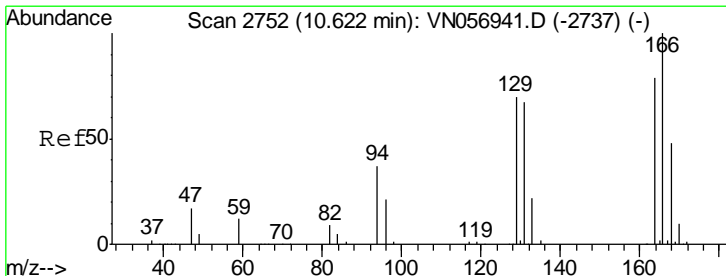
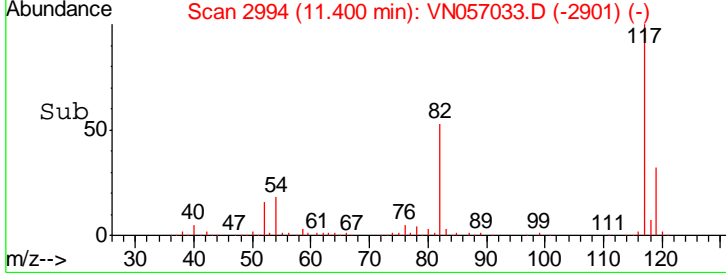
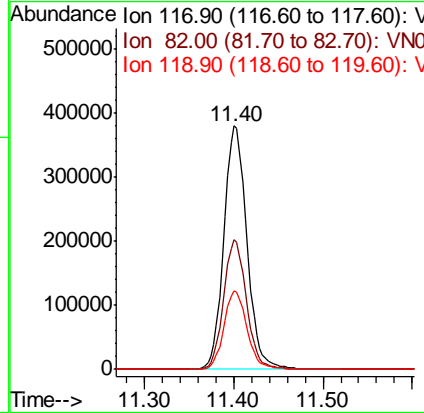
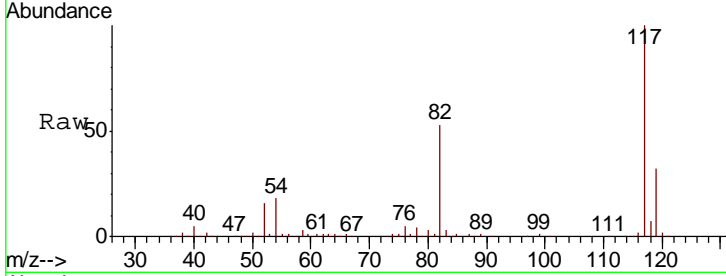




#63
 Chlorobenzene-d5
 Concen: 50.000 ug/l
 RT: 11.40 min Scan# 2994
 Delta R.T. 0.00 min
 Lab File: VN057033.D
 Acq: 1 Aug 2019 13:38

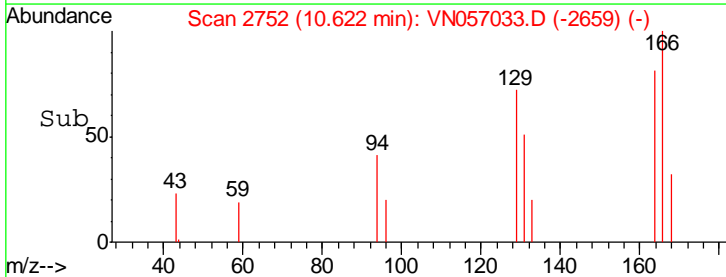
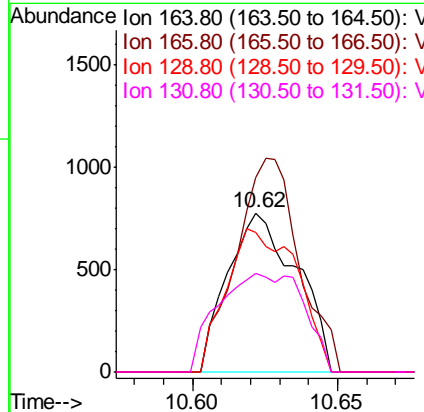
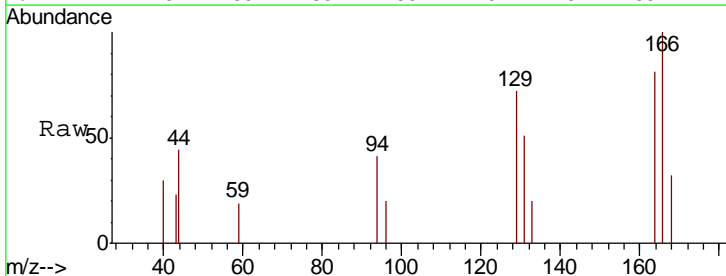
Instrument : MSVOA_N
 ClientSampleId : BP-VPB203-GW-443-445

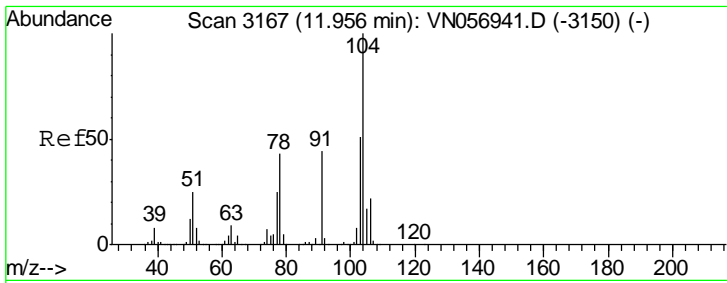
Tgt Ion	Resp	Lower	Upper
117	678711		
82	53.1	42.2	63.4
119	32.3	25.8	38.6



#64
 Tetrachloroethene
 Concen: 0.219 ug/l
 RT: 10.62 min Scan# 2752
 Delta R.T. 0.00 min
 Lab File: VN057033.D
 Acq: 1 Aug 2019 13:38

Tgt Ion	Resp	Lower	Upper
164	1281		
166	122.8	101.1	151.7
129	88.0	70.9	106.3
131	62.1	67.7	101.5#

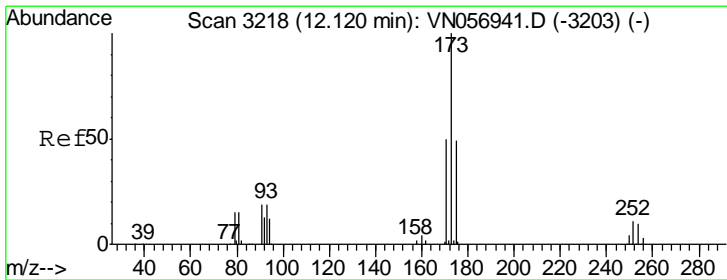
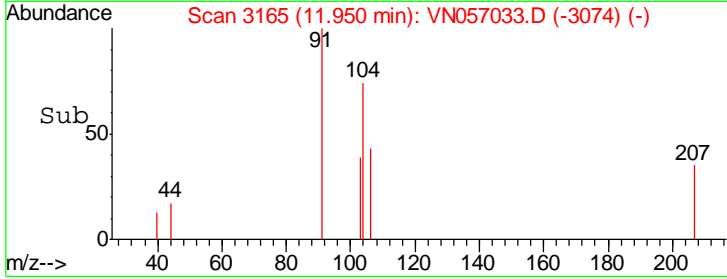
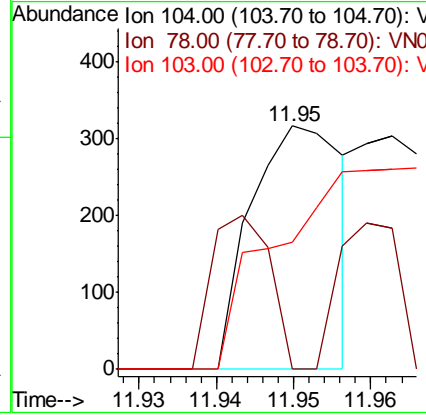
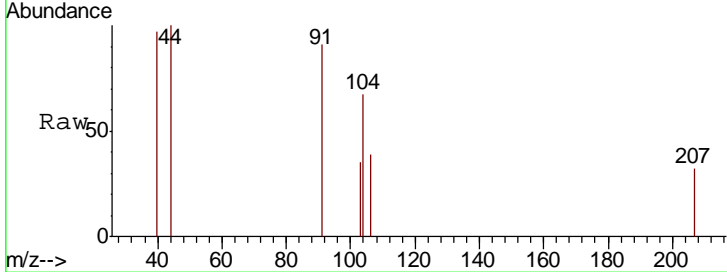




#70
 Styrene
 Concen: 1.883 ug/l
 RT: 11.95 min Scan# 3165
 Delta R.T. -0.01 min
 Lab File: VN057033.D
 Acq: 1 Aug 2019 13:38

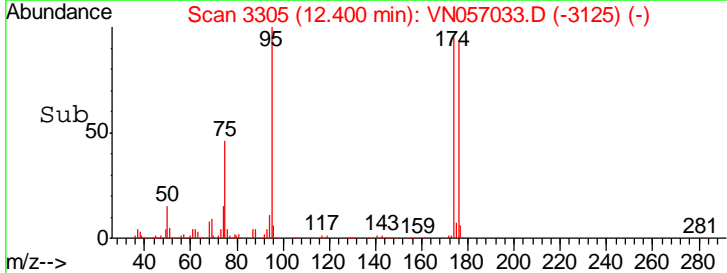
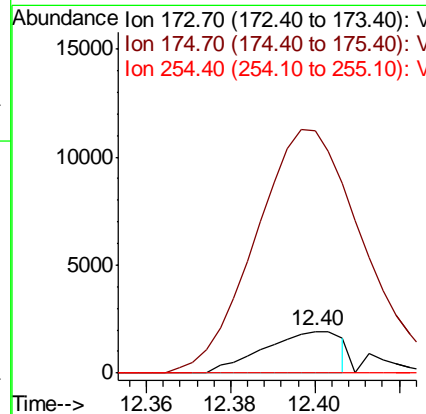
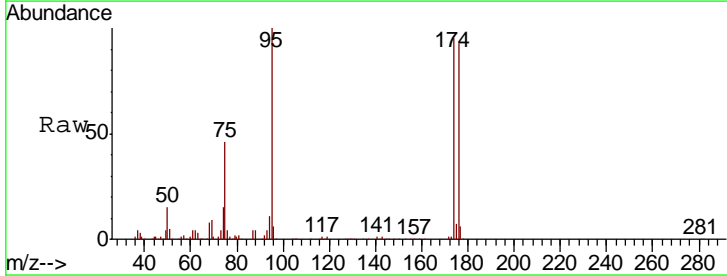
Instrument : MSVOA_N
 ClientSampled : BP-VPB203-GW-443-445

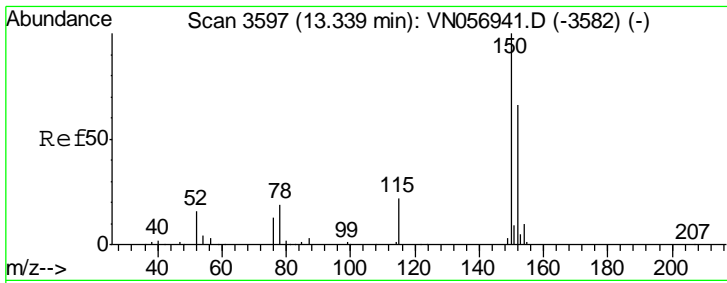
Tgt Ion	Resp	Lower	Upper
104	263		
78	39.5	38.1	57.1
103	0.0	44.3	66.5#



#71
 Bromoform
 Concen: 0.681 ug/l
 RT: 12.40 min Scan# 3305
 Delta R.T. 0.28 min
 Lab File: VN057033.D
 Acq: 1 Aug 2019 13:38

Tgt Ion	Resp	Lower	Upper
173	2476		
175	626.1	24.1	72.4#
254	0.0	0.1	0.1#

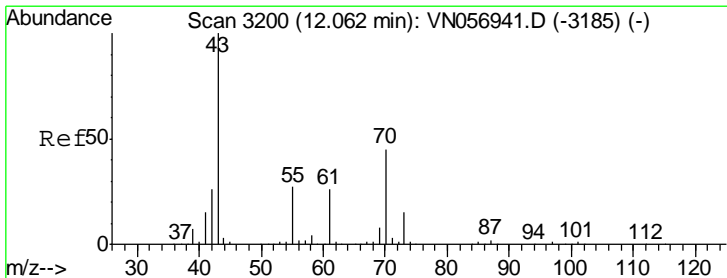
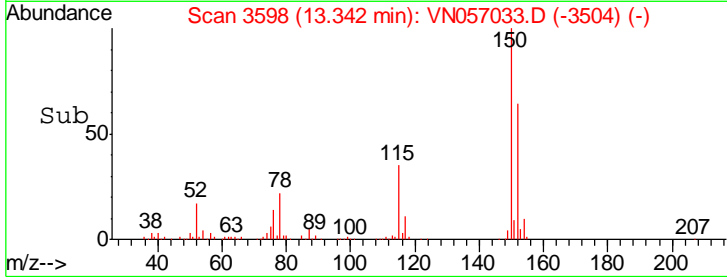
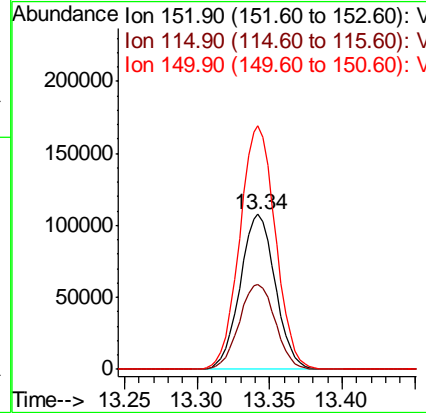
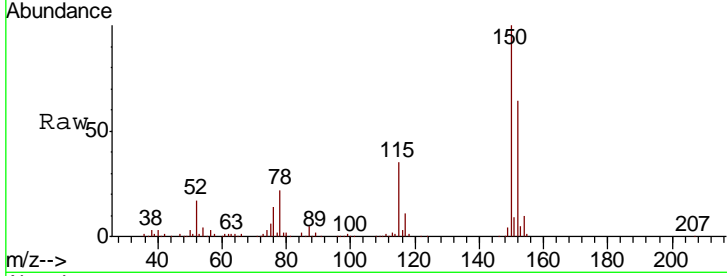




#72
 1,4-Dichlorobenzene-d4
 Concen: 50.000 ug/l
 RT: 13.34 min Scan# 3598
 Delta R.T. 0.00 min
 Lab File: VN057033.D
 Acq: 1 Aug 2019 13:38

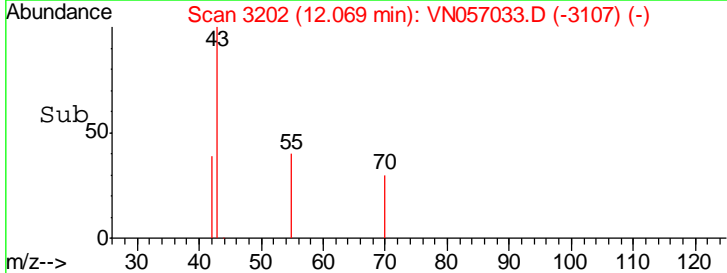
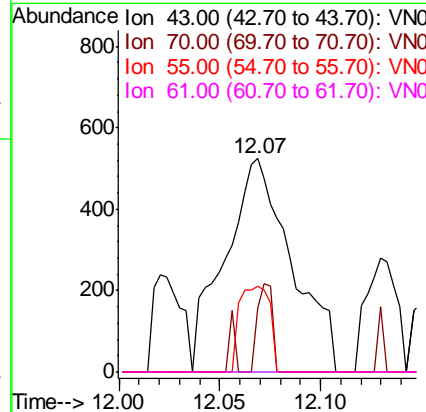
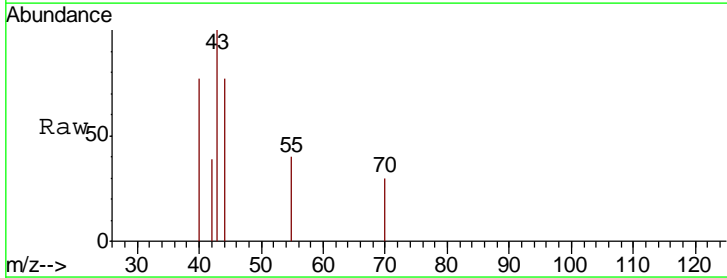
Instrument : MSVOA_N
 ClientSampled : BP-VPB203-GW-443-445

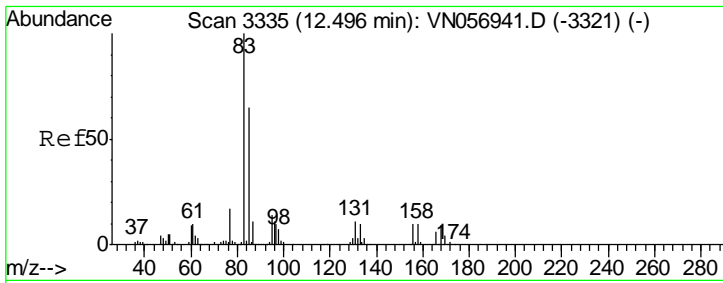
Tgt Ion	Resp	Lower	Upper
152	180939		
152	100		
115	56.5	28.2	84.6
150	159.5	0.0	349.4



#74
 N-amyl acetate
 Concen: 0.266 ug/l
 RT: 12.07 min Scan# 3202
 Delta R.T. 0.01 min
 Lab File: VN057033.D
 Acq: 1 Aug 2019 13:38

Tgt Ion	Resp	Lower	Upper
43	1207		
43	100		
70	9.4	36.5	54.7#
55	18.5	21.4	32.0#
61	0.0	20.5	30.7#

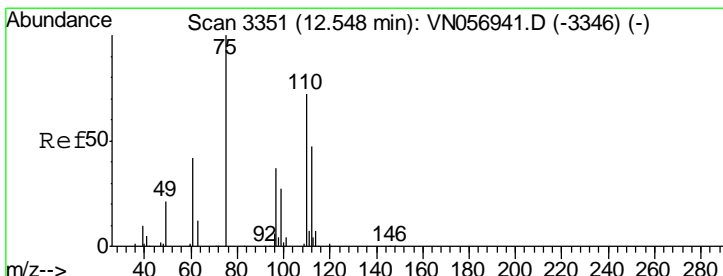
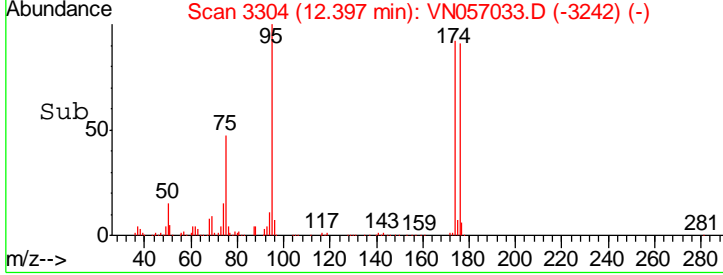
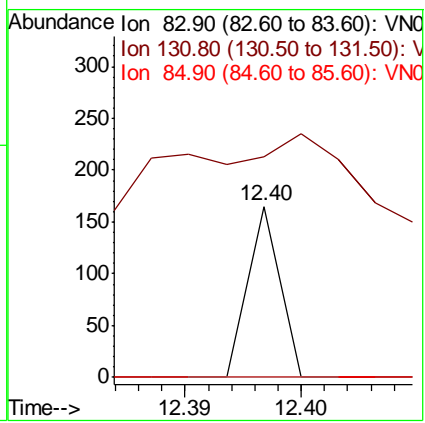
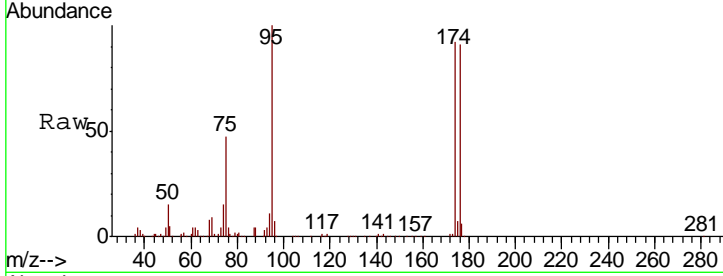




#75
 1,1,2,2-Tetrachloroethane
 Concen: Below Cal
 RT: 12.40 min Scan# 3304
 Delta R.T. -0.10 min
 Lab File: VN057033.D
 Acq: 1 Aug 2019 13:38

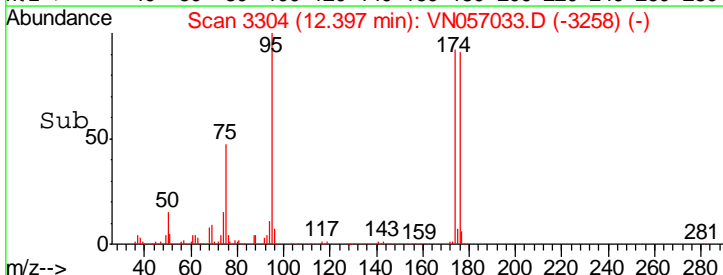
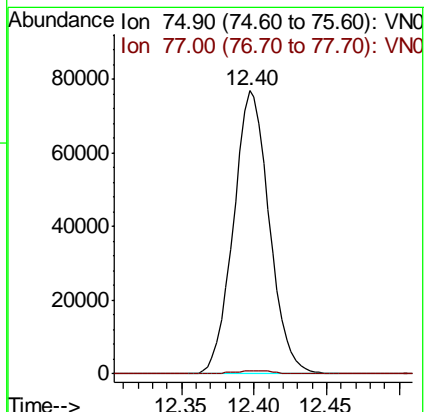
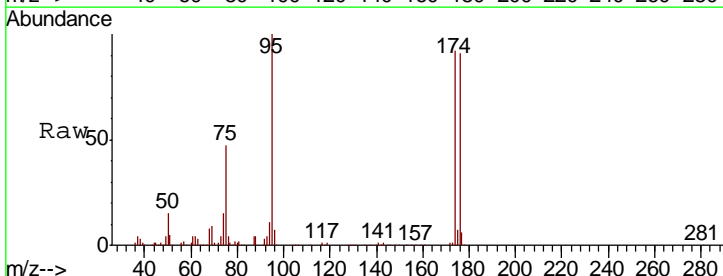
Instrument :
 MSVOA_N
ClientSampled :
 BP-VPB203-GW-443-445

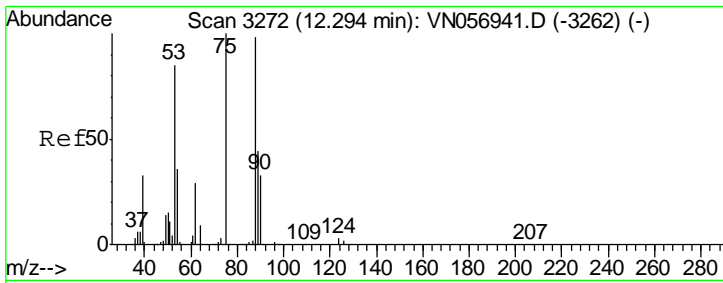
Tgt Ion	Resp	Lower	Upper
83	100		
131	1068.8	5.3	16.1#
85	0.0	32.5	97.4#



#76
 1,2,3-Trichloropropane
 Concen: 35.847 ug/l
 RT: 12.40 min Scan# 3304
 Delta R.T. -0.15 min
 Lab File: VN057033.D
 Acq: 1 Aug 2019 13:38

Tgt Ion	Resp	Lower	Upper
75	100		
77	1.3	0.0	0.0#

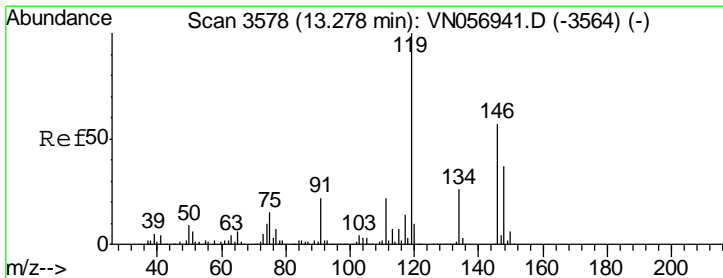
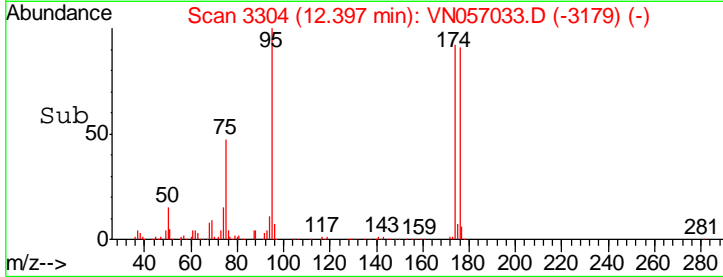
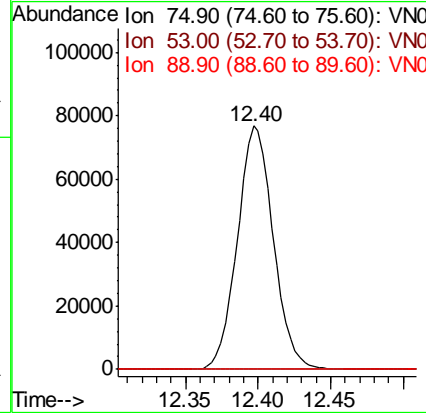
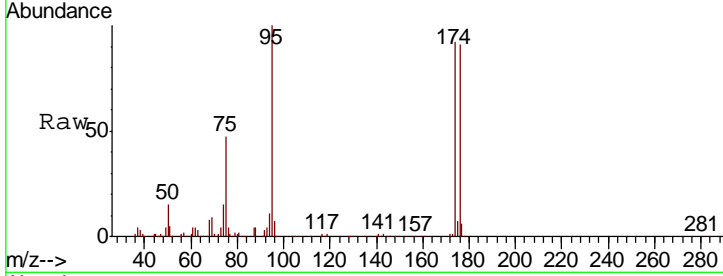




#81
 trans-1,4-Dichloro-2-butene
 Concen: 115.176 ug/l
 RT: 12.40 min Scan# 3304
 Delta R.T. 0.10 min
 Lab File: VN057033.D
 Acq: 1 Aug 2019 13:38

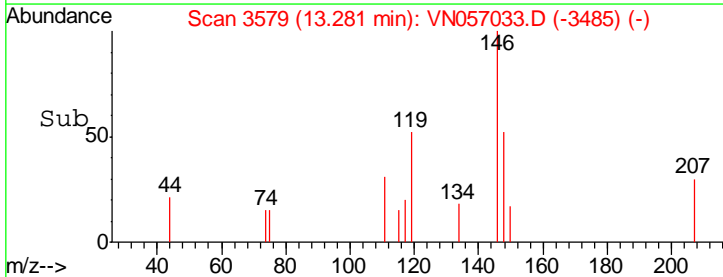
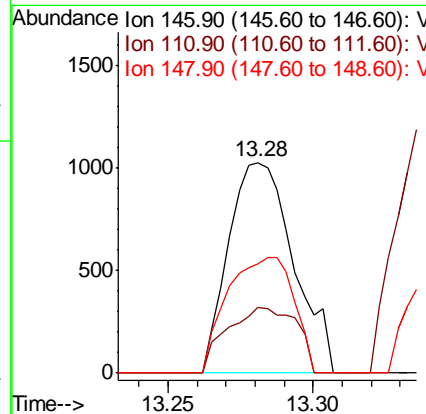
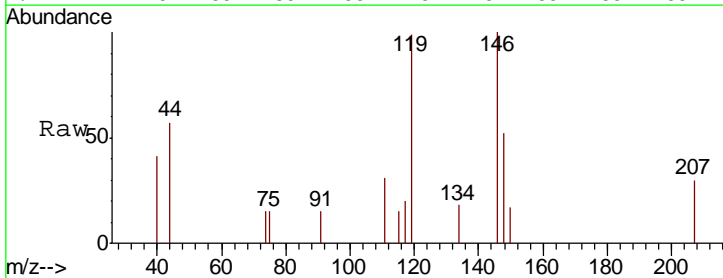
Instrument :
 MSVOA_N
 ClientSampled :
 BP-VPB203-GW-443-445

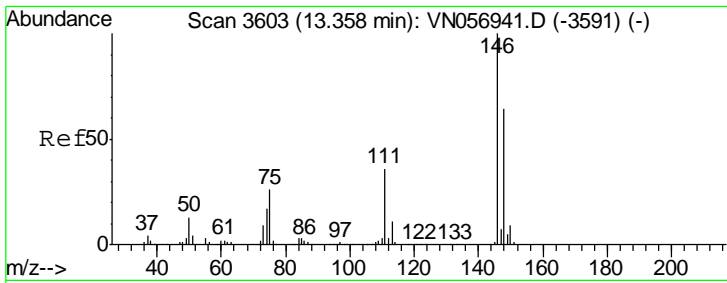
Tgt Ion	Resp	Lower	Upper
75	100		
53	0.1	69.3	103.9#
89	0.0	35.8	53.6#



#87
 1,3-Dichlorobenzene
 Concen: 0.257 ug/l
 RT: 13.28 min Scan# 3579
 Delta R.T. 0.00 min
 Lab File: VN057033.D
 Acq: 1 Aug 2019 13:38

Tgt Ion	Resp	Lower	Upper
146	100		
111	33.2	18.6	55.8
148	55.9	32.2	96.6

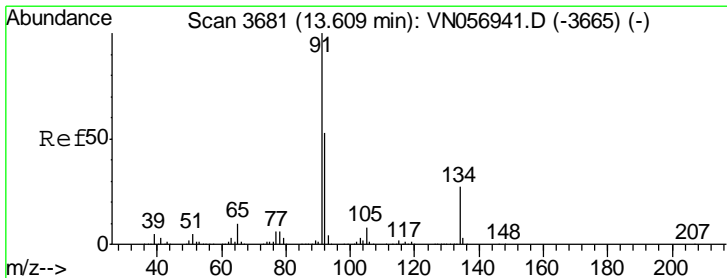
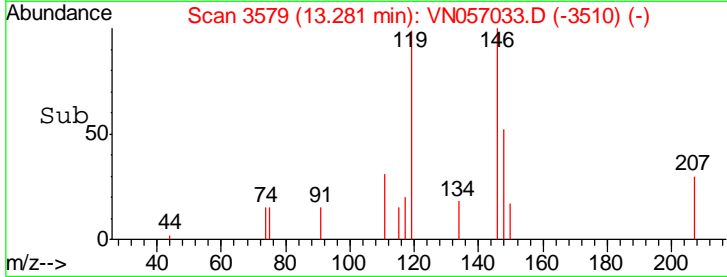
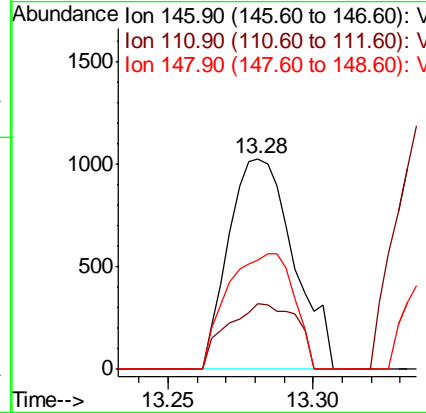
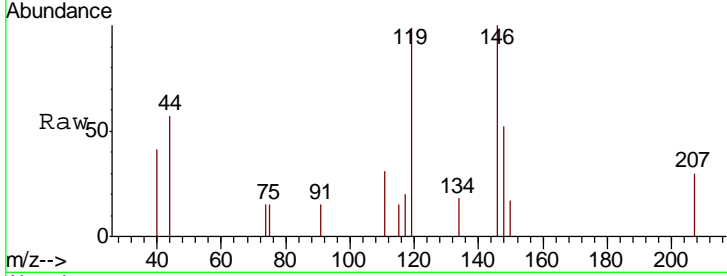




#88
 1,4-Dichlorobenzene
 Concen: 0.267 ug/l
 RT: 13.28 min Scan# 3579
 Delta R.T. -0.08 min
 Lab File: VN057033.D
 Acq: 1 Aug 2019 13:38

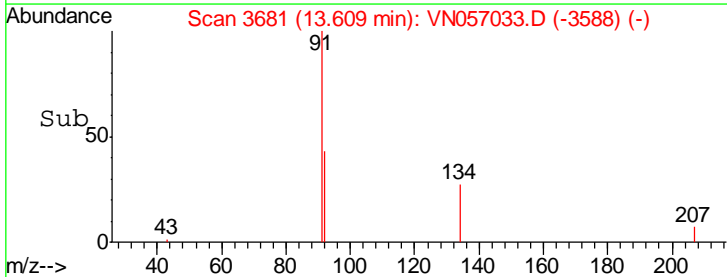
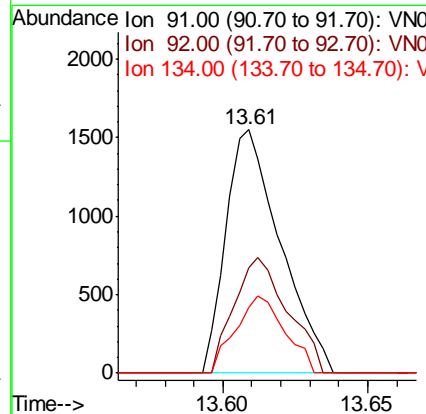
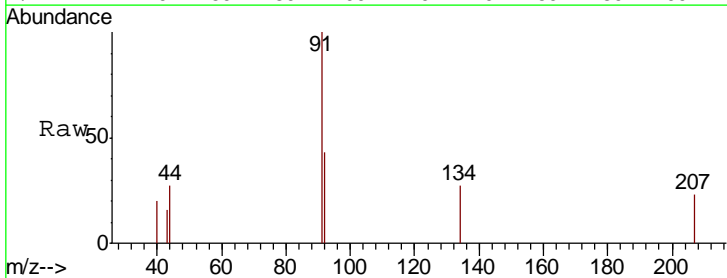
Instrument :
 MSVOA_N
 ClientSampled :
 BP-VPB203-GW-443-445

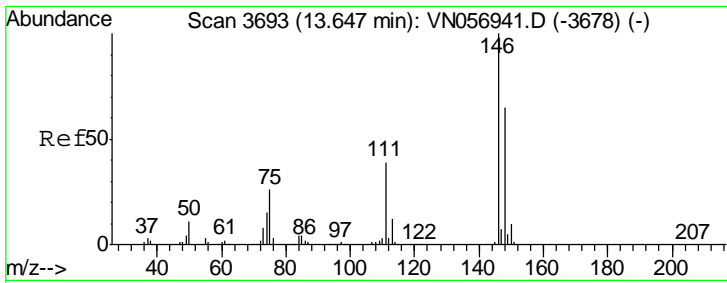
Tgt Ion	Resp	Lower	Upper
146	1598		
111	33.2	18.4	55.2
148	55.9	32.3	96.9



#89
 n-Butylbenzene
 Concen: 0.202 ug/l
 RT: 13.61 min Scan# 3681
 Delta R.T. 0.00 min
 Lab File: VN057033.D
 Acq: 1 Aug 2019 13:38

Tgt Ion	Resp	Lower	Upper
91	2021		
92	46.6	26.2	78.5
134	28.6	13.5	40.4



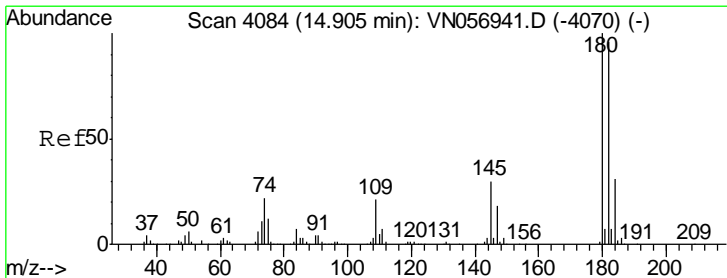
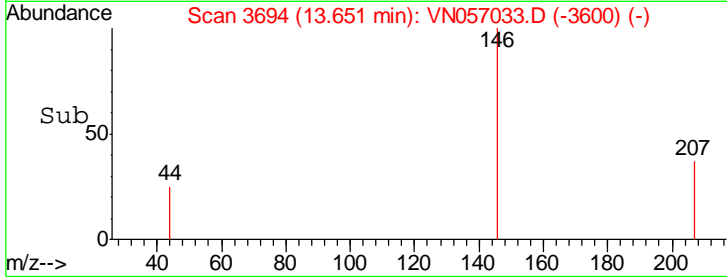
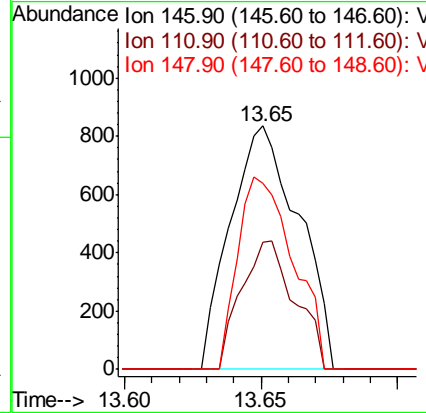
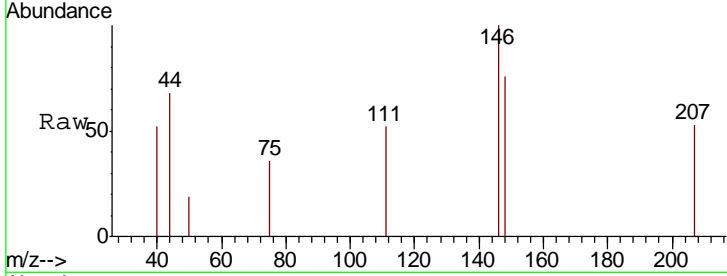


#91
 1,2-Dichlorobenzene
 Concen: 0.238 ug/l
 RT: 13.65 min Scan# 3694
 Delta R.T. 0.00 min
 Lab File: VN057033.D
 Acq: 1 Aug 2019 13:38

Instrument : MSVOA_N
 ClientSampled : BP-VPB203-GW-443-445

Tgt Ion:146 Resp: 1457

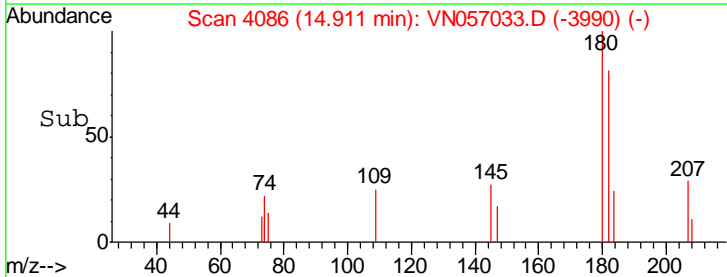
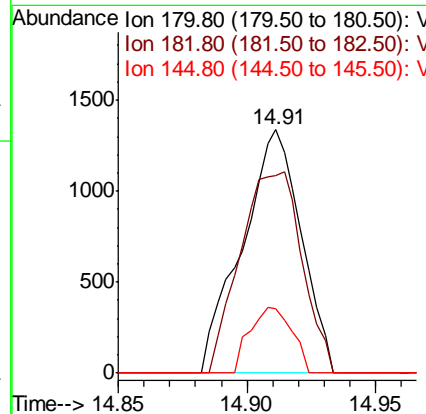
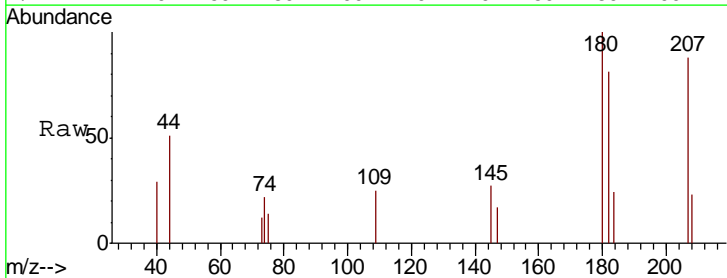
Ion	Ratio	Lower	Upper
146	100		
111	41.2	19.4	58.4
148	63.9	32.2	96.6

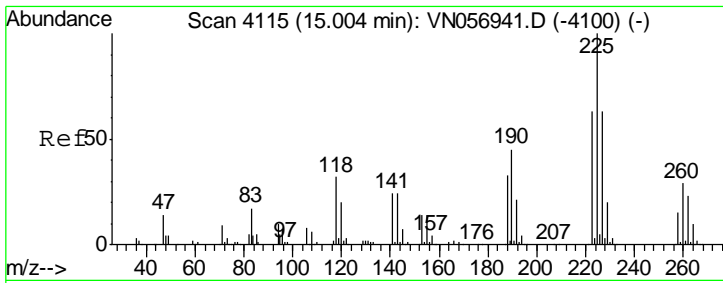


#93
 1,2,4-Trichlorobenzene
 Concen: 3.350 ug/l
 RT: 14.91 min Scan# 4086
 Delta R.T. 0.01 min
 Lab File: VN057033.D
 Acq: 1 Aug 2019 13:38

Tgt Ion:180 Resp: 2128

Ion	Ratio	Lower	Upper
180	100		
182	86.7	47.6	142.8
145	19.5	14.2	42.8

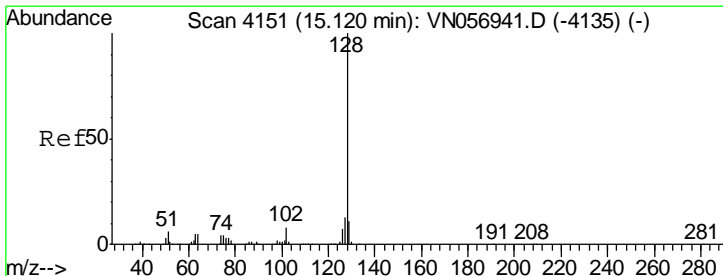
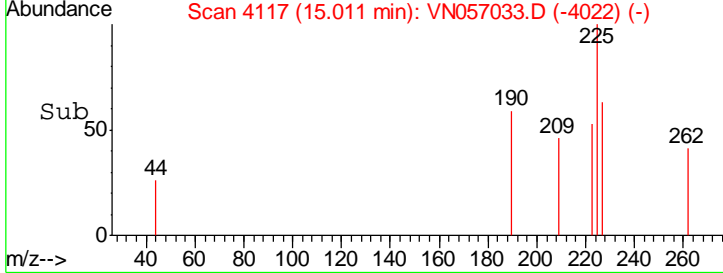
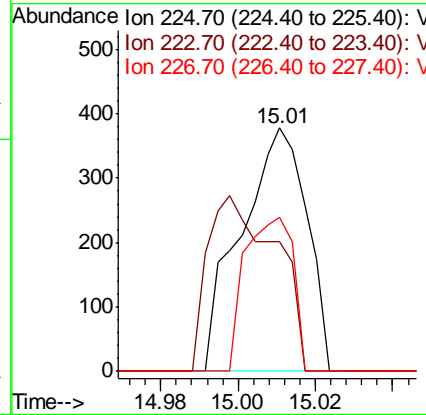
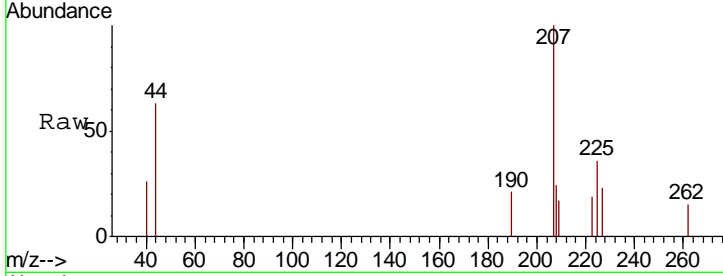




#94
 Hexachlorobutadiene
 Concen: Below Cal
 RT: 15.01 min Scan# 4117
 Delta R.T. 0.01 min
 Lab File: VN057033.D
 Acq: 1 Aug 2019 13:38

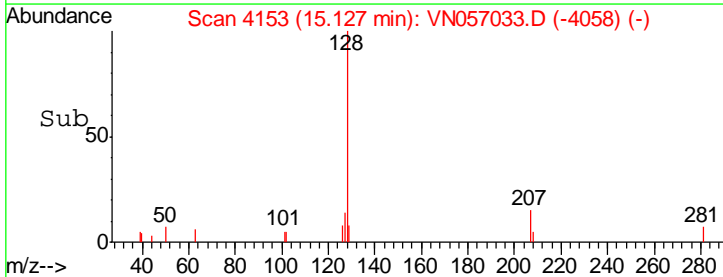
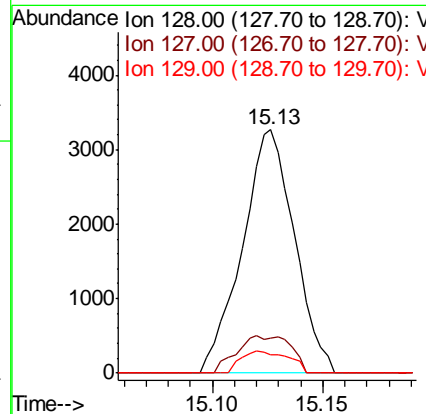
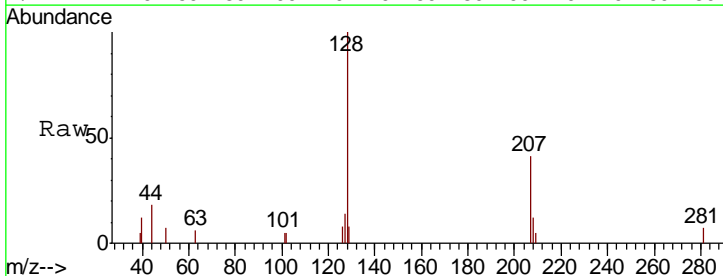
Instrument : MSVOA_N
 ClientSampleId : BP-VPB203-GW-443-445

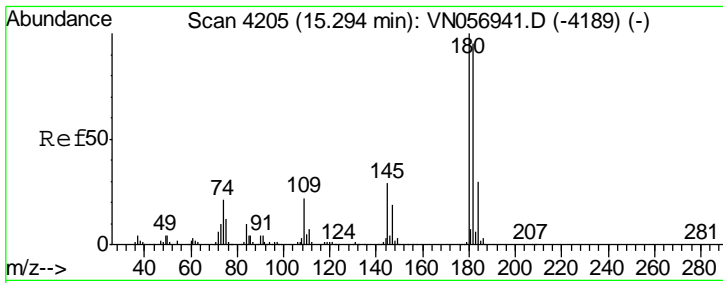
Tgt Ion	Resp	Lower	Upper
225	100		
223	74.0	30.8	92.4
227	45.9	31.1	93.5



#95
 Naphthalene
 Concen: 4.233 ug/l
 RT: 15.13 min Scan# 4153
 Delta R.T. 0.01 min
 Lab File: VN057033.D
 Acq: 1 Aug 2019 13:38

Tgt Ion	Resp	Lower	Upper
128	100		
127	15.8	10.0	15.0#
129	8.2	8.7	13.1#

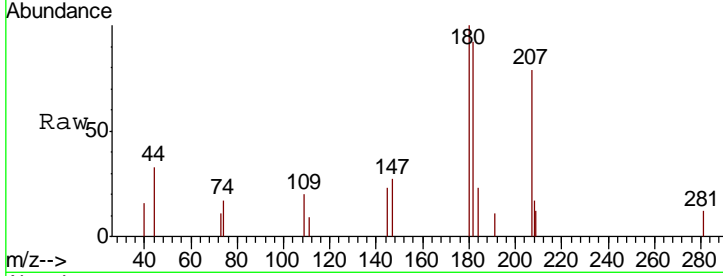




#96
 1,2,3-Trichlorobenzene
 Concen: 2.898 ug/l
 RT: 15.30 min Scan# 4206
 Delta R.T. 0.00 min
 Lab File: VN057033.D
 Acq: 1 Aug 2019 13:38

Instrument :
 MSVOA_N
ClientSampleId :
 BP-VPB203-GW-443-445

Tot Ion	Resp	Lower	Upper
180	100		
182	91.7	48.0	144.2
145	24.9	15.0	45.0



Abundance
 Ion 179.80 (179.50 to 180.50): V
 Ion 181.80 (181.50 to 182.50): V
 Ion 144.90 (144.60 to 145.60): V

