

Data Path : Z:\voasrv\HPCHEM1\MSVOA N\Data\VN080119\  
 Data File : VN057036.D  
 Acq On : 1 Aug 2019 14:48  
 Operator : JC/SP  
 Sample : K4097-05  
 Misc : 5.00mL/MSVOA N/WATER  
 ALS Vial : 15 Sample Multiplier: 1

Instrument :  
 MSVOA\_N  
 ClientSampleId :  
 BP-VPB203-GW-478-480

Integration Parameters: RTEINT.P  
 Integrator: RTE  
 Smoothing : ON Filtering: 5  
 Sampling : 1 Min Area: 3 % of largest Peak  
 Start Thrs: 0.2 Max Peaks: 100  
 Stop Thrs : 0 Peak Location: TOP

If leading or trailing edge < 100 prefer < Baseline drop else tangent >  
 Peak separation: 5

Method : Z:\VOASRV\HPCHEM1\MSVOA\_N\METHODS\82N072719W.M  
 Title : SW846 8260

Signal : TIC

peak #	R.T. min	first scan	max scan	last scan	PK TY	peak height	corr. area	corr. % max.	% of total
1	1.809	3	11	27	rVB2	35862	48800	1.74%	0.403%
2	4.725	903	918	945	rVB2	9037	31499	1.12%	0.260%
3	7.580	1786	1806	1817	rBV	382625	945672	33.73%	7.806%
4	7.654	1817	1829	1852	rVB2	617799	1463464	52.19%	12.080%
5	8.018	1923	1942	1963	rBV	387568	899837	32.09%	7.427%
6	8.265	1995	2019	2020	rBV	11431	32636	1.16%	0.269%
7	8.577	2100	2116	2146	rBV	835195	1737800	61.98%	14.344%
8	10.082	2569	2584	2627	rBV	1518901	2803876	100.00%	23.143%
9	11.400	2980	2994	3023	rBV	993432	1798356	64.14%	14.844%
10	12.397	3291	3304	3324	rBV	795562	1392323	49.66%	11.492%
11	13.342	3582	3598	3619	rVB	563158	960941	34.27%	7.932%

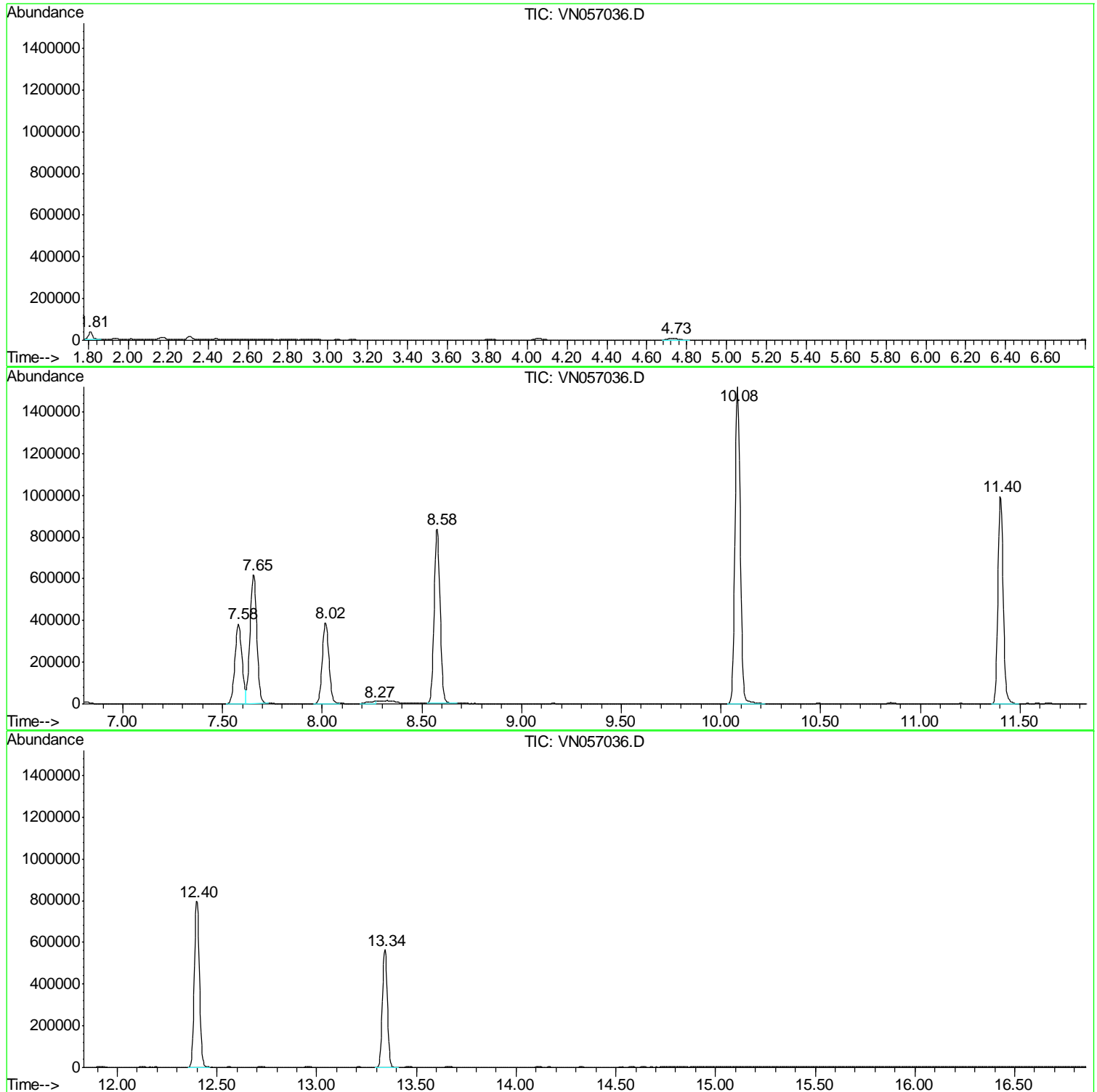
Sum of corrected areas: 12115204

Data Path : Z:\voasrv\HPCHEM1\MSVOA N\Data\VN080119\  
Data File : VN057036.D  
Acq On : 1 Aug 2019 14:48  
Operator : JC/SP  
Sample : K4097-05  
Misc : 5.00mL/MSVOA N/WATER  
ALS Vial : 15 Sample Multiplier: 1

Instrument :  
MSVOA\_N  
ClientSampleId :  
BP-VPB203-GW-478-480

Quant Method : Z:\VOASRV\HPCHEM1\MSVOA\_N\METHODS\82N072719W.M  
Quant Title : SW846 8260

TIC Library : C:\DATABASE\NIST11.L  
TIC Integration Parameters: LSCINT.P



Data Path : Z:\voasrv\HPCHEM1\MSVOA\_N\Data\VN080119\  
Data File : VN057036.D  
Acq On : 1 Aug 2019 14:48  
Operator : JC/SP  
Sample : K4097-05  
Misc : 5.00mL/MSVOA\_N/WATER  
ALS Vial : 15 Sample Multiplier: 1

**Instrument :**  
MSVOA\_N  
**ClientSampleId :**  
BP-VPB203-GW-478-480

Quant Method : Z:\VOASRV\HPCHEM1\MSVOA\_N\METHODS\82N072719W.M  
Quant Title : SW846 8260

TIC Library : C:\DATABASE\NIST11.L  
TIC Integration Parameters: LSCINT.P

No Library Search Compounds Detected

\*\*\*\*\*

Data Path : Z:\voasrv\HPCHEM1\MSVOA\_N\Data\VN080119\  
Data File : VN057036.D  
Acq On : 1 Aug 2019 14:48  
Operator : JC/SP  
Sample : K4097-05  
Misc : 5.00mL/MSVOA\_N/WATER  
ALS Vial : 15 Sample Multiplier: 1

Instrument :  
MSVOA\_N  
ClientSampleId :  
BP-VPB203-GW-478-480

Quant Method : Z:\VOASRV\HPCHEM1\MSVOA\_N\METHODS\82N072719W.M  
Quant Title : SW846 8260

TIC Library : C:\DATABASE\NIST11.L  
TIC Integration Parameters: LSCINT.P

TIC Top Hit name	RT	EstConc	Units	Response	--Internal Standard--			
					#	RT	Resp	Conc

---