

Data Path : Z:\voasrv\HPCHEM1\MSVOA_N\Data\VN080122\
 Data File : VN073670.D
 Acq On : 01 Aug 2022 19:24
 Operator : JC\MD
 Sample : N3988-05
 Misc : 5.0mL/MSVOA_N/WATER
 ALS Vial : 20 Sample Multiplier: 1

Instrument :
 MSVOA_N
 ClientSampleId :

Quant Time: Aug 02 05:05:21 2022
 Quant Method : Z:\voasrv\HPCHEM1\MSVOA_N\methods\82N072822W.M
 Quant Title : SW846 8260
 QLast Update : Fri Jul 29 02:20:25 2022
 Response via : Initial Calibration

Compound	R.T.	QIon	Response	Conc	Units	Dev(Min)

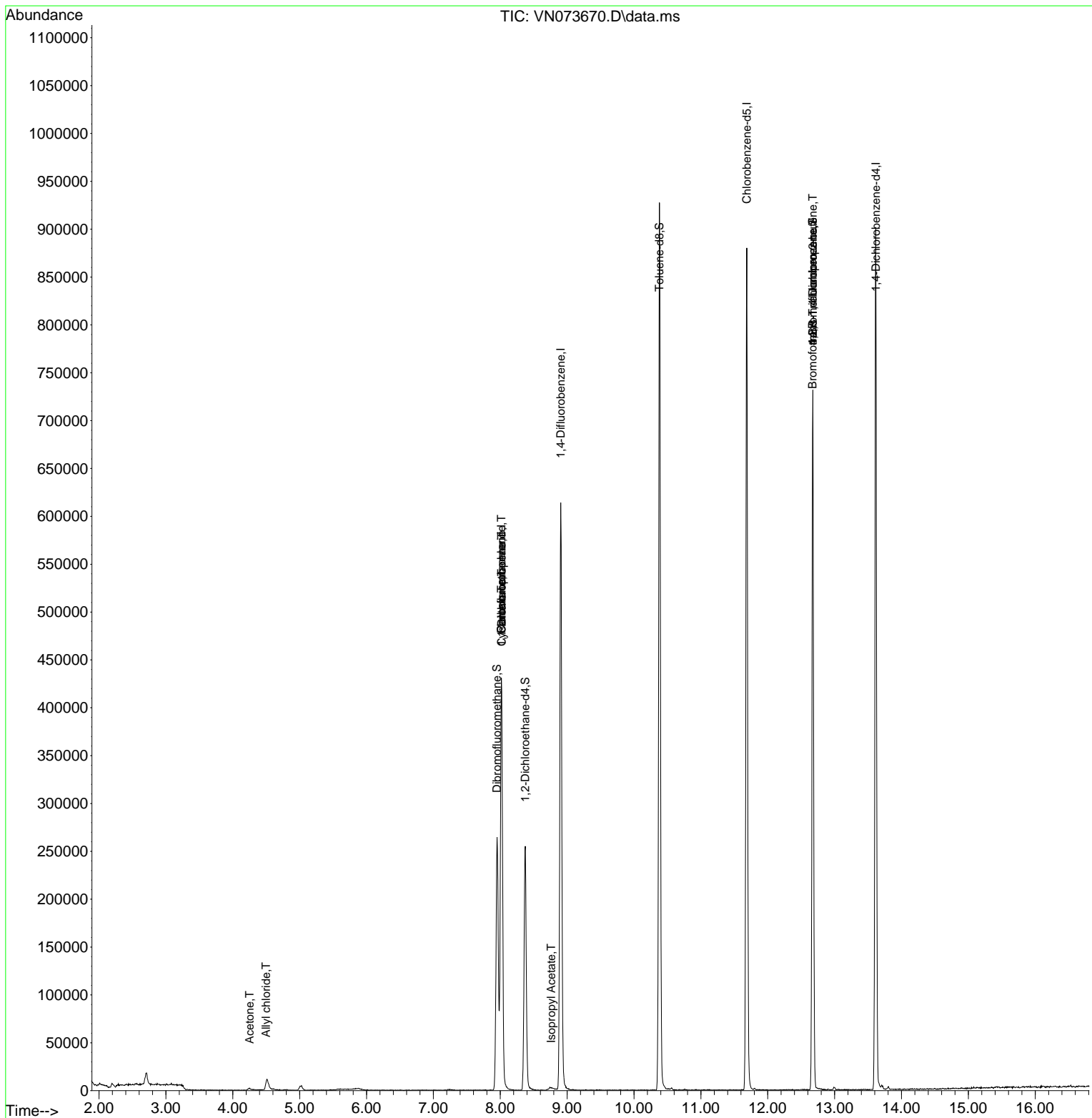
Internal Standards						
1) Pentafluorobenzene	8.016	168	346466	50.000	ug/l	0.00
34) 1,4-Difluorobenzene	8.904	114	561908	50.000	ug/l	0.00
63) Chlorobenzene-d5	11.686	117	526898	50.000	ug/l	0.00
72) 1,4-Dichlorobenzene-d4	13.616	152	253366	50.000	ug/l	0.00
System Monitoring Compounds						
33) 1,2-Dichloroethane-d4	8.375	65	210217	49.788	ug/l	0.00
Spiked Amount	50.000	Range 74 - 125	Recovery	=	99.580%	
35) Dibromofluoromethane	7.951	113	196071	55.569	ug/l	0.00
Spiked Amount	50.000	Range 75 - 124	Recovery	=	111.140%	
50) Toluene-d8	10.381	98	649601	46.785	ug/l	0.00
Spiked Amount	50.000	Range 86 - 113	Recovery	=	93.580%	
62) 4-Bromofluorobenzene	12.675	95	235020	50.554	ug/l	0.00
Spiked Amount	50.000	Range 83 - 123	Recovery	=	101.100%	
Target Compounds						
						Qvalue
3) Chloromethane	2.269	50	928	Below Cal	#	43
6) Chloroethane	2.946	64	364	Below Cal	#	42
14) Allyl chloride	4.499	41	1648	0.314	ug/l #	54
16) Acetone	4.252	43	3829	1.688	ug/l	95
20) Methylene Chloride	5.028	84	4269	Below Cal		94
31) Cyclohexane	8.022	56	6801	1.082	ug/l #	36
36) 1,1-Dichloropropene	8.022	75	25147	5.001	ug/l #	49
38) Carbon Tetrachloride	8.016	117	33725	6.603	ug/l #	18
43) Isopropyl Acetate	8.763	43	2561	0.286	ug/l #	53
71) Bromoform	12.669	173	1599	0.483	ug/l #	28
76) 1,2,3-Trichloropropane	12.675	75	123045	24.891	ug/l #	1
81) trans-1,4-Dichloro-2-b...	12.675	75	123045	62.936	ug/l #	10

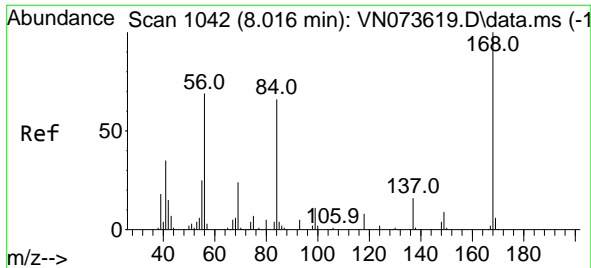
(#) = qualifier out of range (m) = manual integration (+) = signals summed

Data Path : Z:\voasrv\HPCHEM1\MSVOA_N\Data\VN080122\
 Data File : VN073670.D
 Acq On : 01 Aug 2022 19:24
 Operator : JC\MD
 Sample : N3988-05
 Misc : 5.0mL/MSVOA_N/WATER
 ALS Vial : 20 Sample Multiplier: 1

Instrument :
 MSVOA_N
 ClientSampleId :

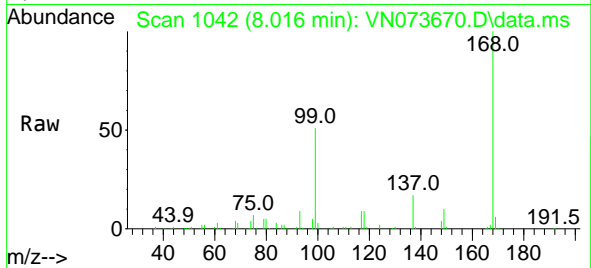
Quant Time: Aug 02 05:05:21 2022
 Quant Method : Z:\voasrv\HPCHEM1\MSVOA_N\methods\82N072822W.M
 Quant Title : SW846 8260
 QLast Update : Fri Jul 29 02:20:25 2022
 Response via : Initial Calibration



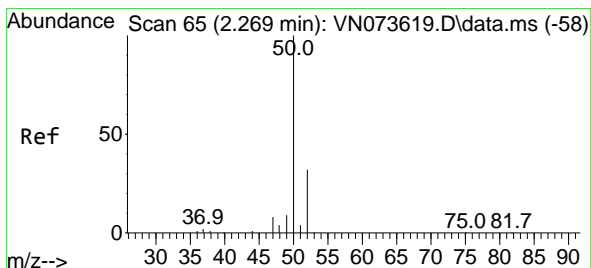
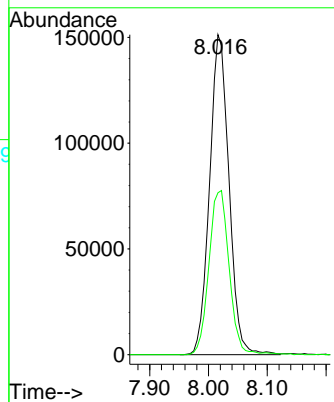
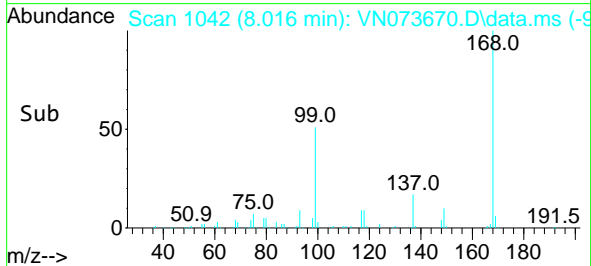


#1
 Pentafluorobenzene
 Concen: 50.000 ug/l
 RT: 8.016 min Scan# 10
 Delta R.T. 0.000 min
 Lab File: VN073670.D
 Acq: 01 Aug 2022 19:24

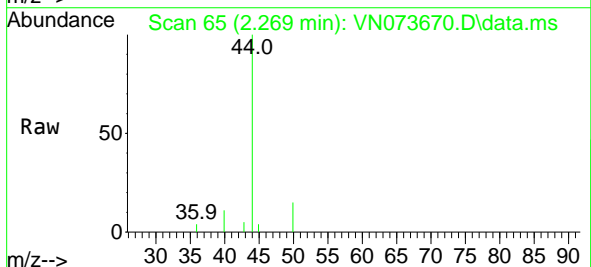
Instrument :
 MSVOA_N
 ClientSampleId :



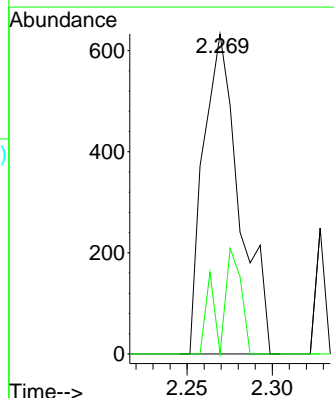
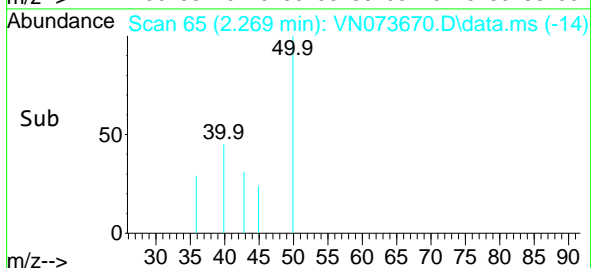
Tgt Ion:168 Resp: 346466
 Ion Ratio Lower Upper
 168 100
 99 50.6 42.3 63.5

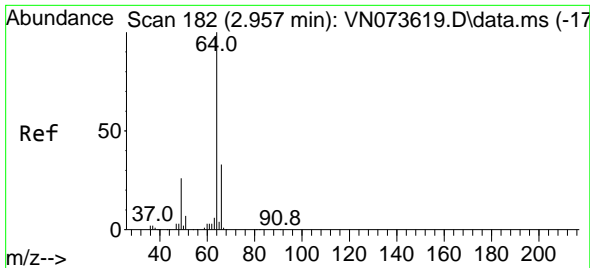


#3
 Chloromethane
 Concen: Below Cal
 RT: 2.269 min Scan# 65
 Delta R.T. 0.000 min
 Lab File: VN073670.D
 Acq: 01 Aug 2022 19:24



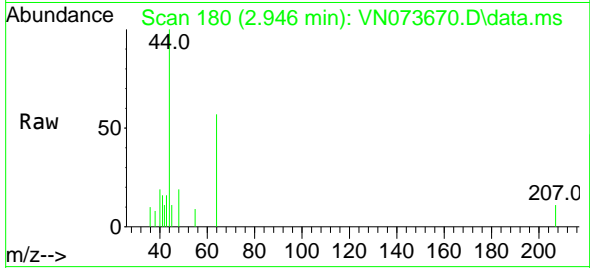
Tgt Ion: 50 Resp: 928
 Ion Ratio Lower Upper
 50 100
 52 0.0 25.7 38.5#



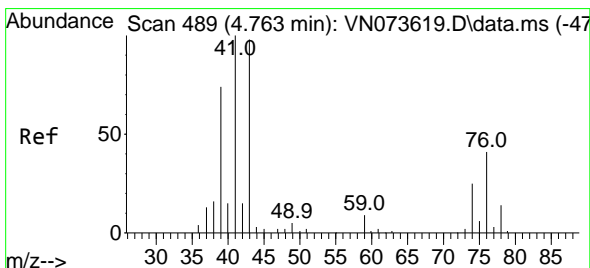
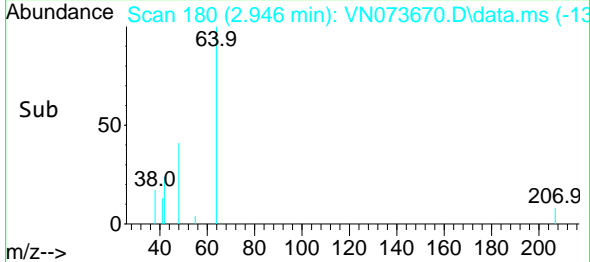
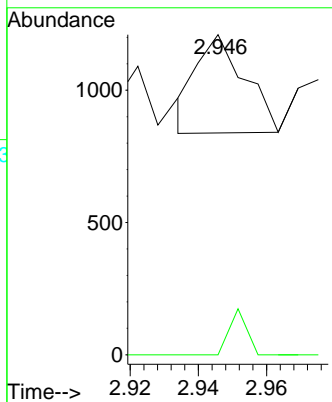


#6
 Chloroethane
 Concen: Below Cal
 RT: 2.946 min Scan# 11
 Delta R.T. -0.011 min
 Lab File: VN073670.D
 Acq: 01 Aug 2022 19:24

Instrument :
 MSVOA_N
 ClientSampleId :

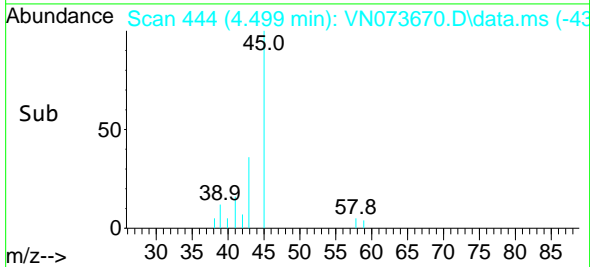
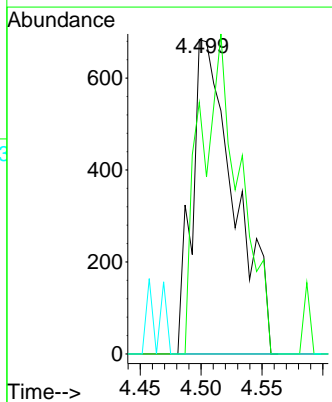
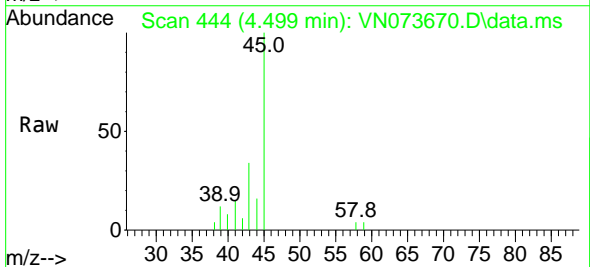


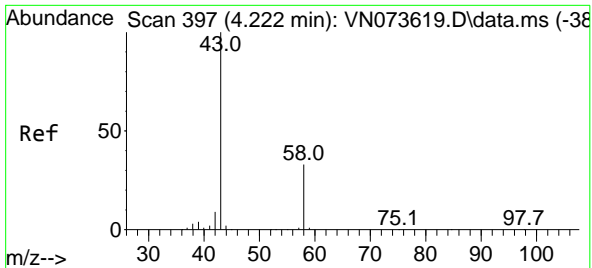
Tgt Ion: 64 Resp: 364
 Ion Ratio Lower Upper
 64 100
 66 0.0 26.2 39.4#



#14
 Allyl chloride
 Concen: 0.314 ug/l
 RT: 4.499 min Scan# 444
 Delta R.T. -0.265 min
 Lab File: VN073670.D
 Acq: 01 Aug 2022 19:24

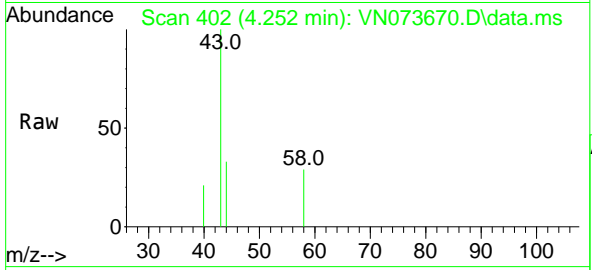
Tgt Ion: 41 Resp: 1648
 Ion Ratio Lower Upper
 41 100
 39 96.1 53.2 79.8#
 76 0.0 29.9 44.9#



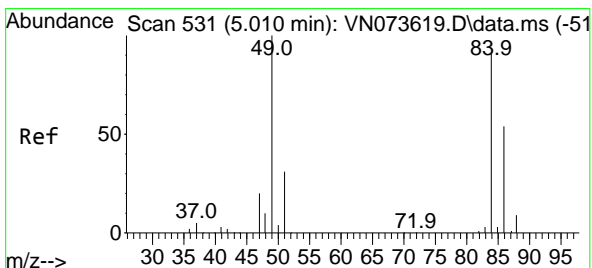
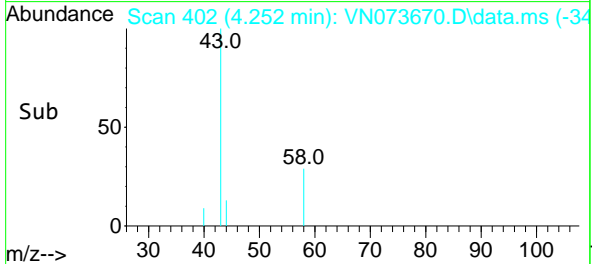
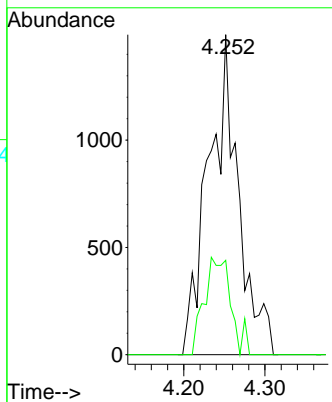


#16
 Acetone
 Concen: 1.688 ug/l
 RT: 4.252 min Scan# 402
 Delta R.T. 0.030 min
 Lab File: VN073670.D
 Acq: 01 Aug 2022 19:24

Instrument :
 MSVOA_N
 ClientSampleId :

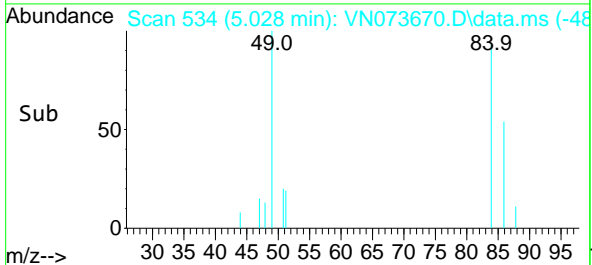
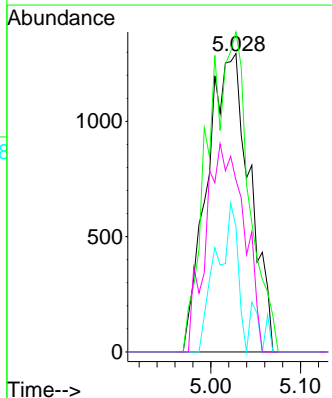
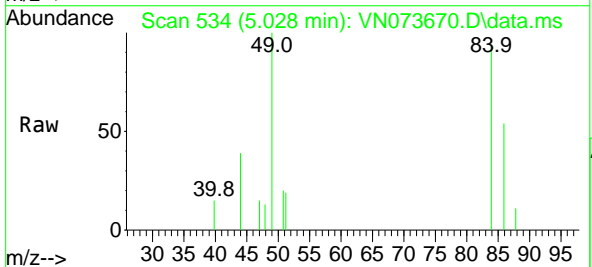


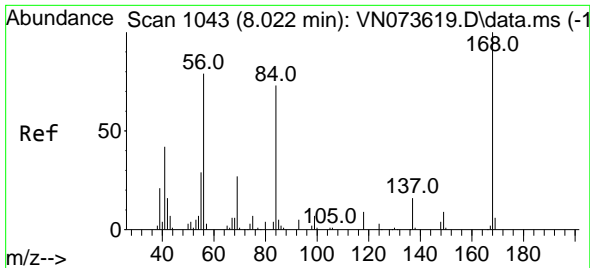
Tgt Ion: 43 Resp: 3829
 Ion Ratio Lower Upper
 43 100
 58 29.5 26.0 39.0



#20
 Methylene Chloride
 Concen: Below Cal
 RT: 5.028 min Scan# 534
 Delta R.T. 0.018 min
 Lab File: VN073670.D
 Acq: 01 Aug 2022 19:24

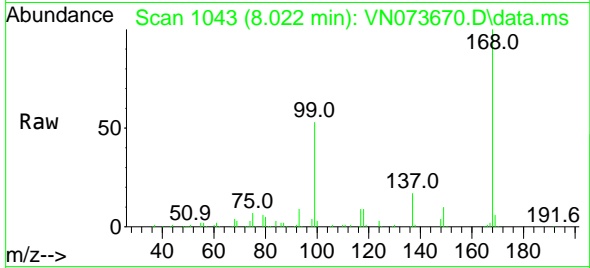
Tgt Ion: 84 Resp: 4269
 Ion Ratio Lower Upper
 84 100
 49 107.3 88.3 132.5
 51 42.0 28.2 42.2
 86 57.6 50.6 76.0



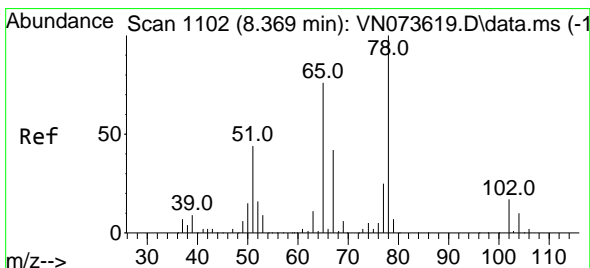
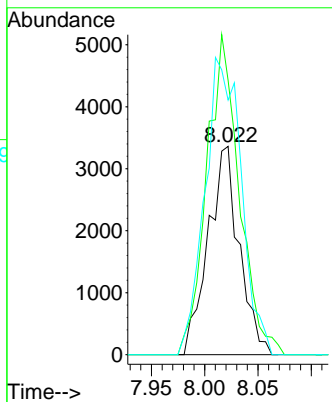
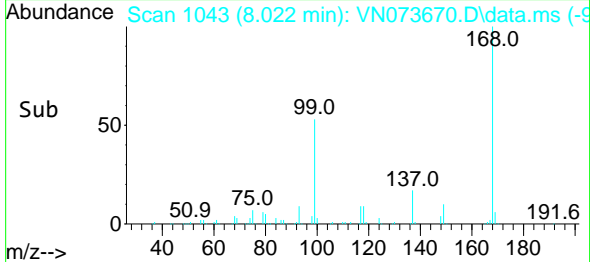


#31
 Cyclohexane
 Concen: 1.082 ug/l
 RT: 8.022 min Scan# 1103
 Delta R.T. 0.000 min
 Lab File: VN073670.D
 Acq: 01 Aug 2022 19:24

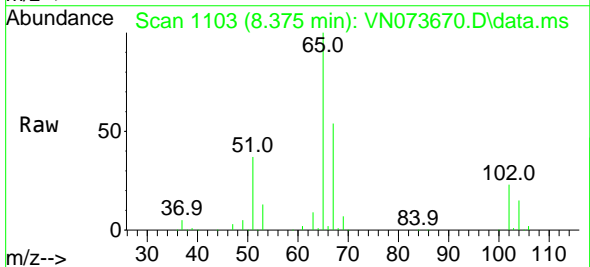
Instrument :
 MSVOA_N
 ClientSampleId :



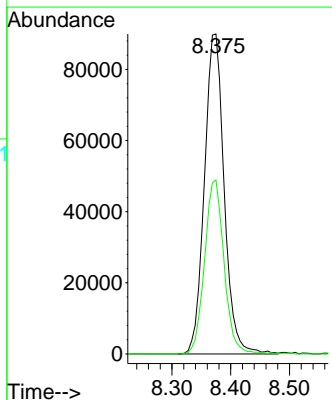
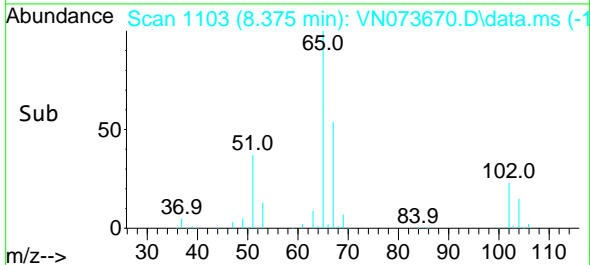
Tgt Ion: 56 Resp: 6801
 Ion Ratio Lower Upper
 56 100
 69 131.7 27.8 41.8#
 84 122.3 76.9 115.3#

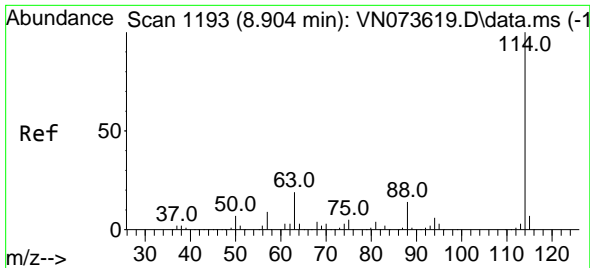


#33
 1,2-Dichloroethane-d4
 Concen: 49.788 ug/l
 RT: 8.375 min Scan# 1103
 Delta R.T. 0.006 min
 Lab File: VN073670.D
 Acq: 01 Aug 2022 19:24



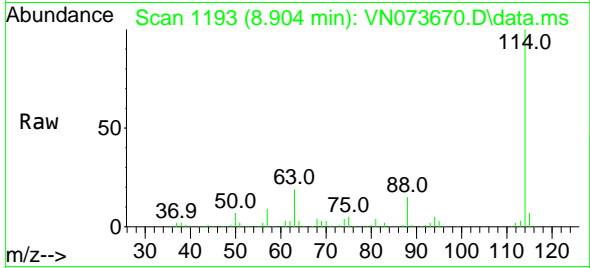
Tgt Ion: 65 Resp: 210217
 Ion Ratio Lower Upper
 65 100
 67 53.5 0.0 104.8



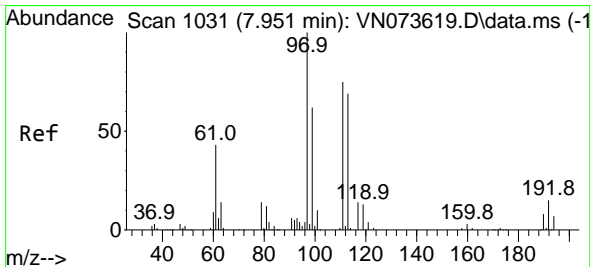
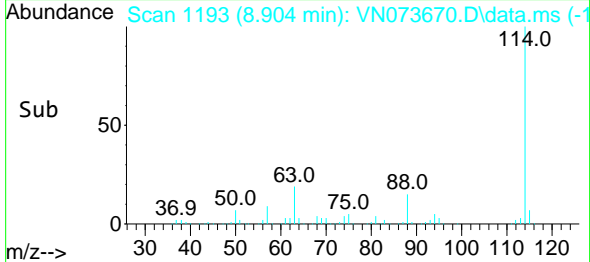
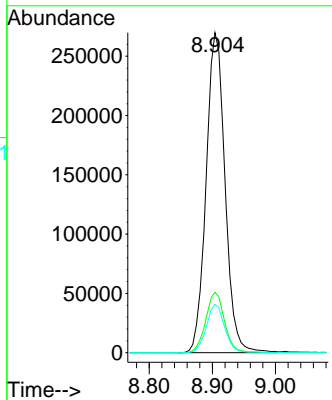


#34
 1,4-Difluorobenzene
 Concen: 50.000 ug/l
 RT: 8.904 min Scan# 1193
 Delta R.T. 0.000 min
 Lab File: VN073670.D
 Acq: 01 Aug 2022 19:24

Instrument : MSVOA_N
 ClientSampleId :

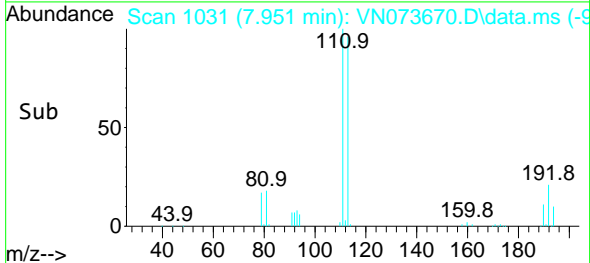
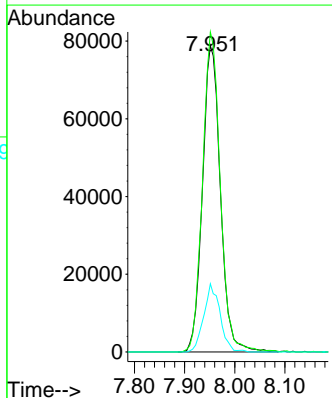
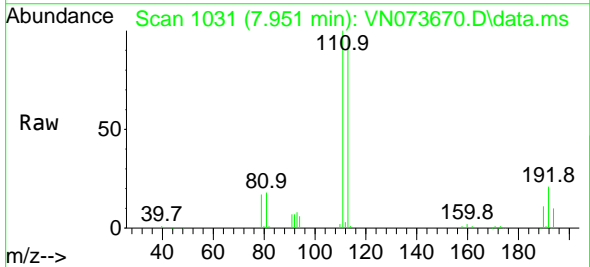


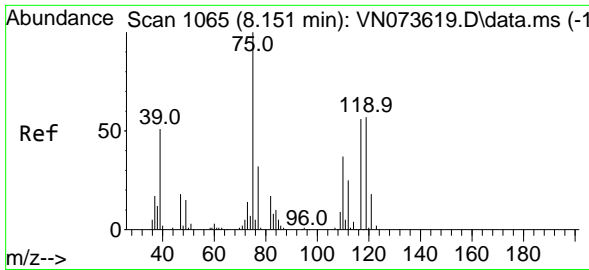
Tgt Ion:114 Resp: 561908
 Ion Ratio Lower Upper
 114 100
 63 18.9 0.0 40.0
 88 15.1 0.0 32.6



#35
 Dibromofluoromethane
 Concen: 55.569 ug/l
 RT: 7.951 min Scan# 1031
 Delta R.T. 0.000 min
 Lab File: VN073670.D
 Acq: 01 Aug 2022 19:24

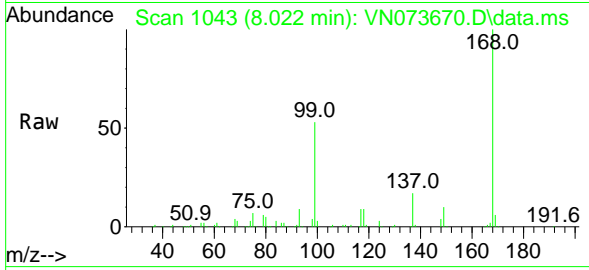
Tgt Ion:113 Resp: 196071
 Ion Ratio Lower Upper
 113 100
 111 103.3 81.4 122.0
 192 20.0 17.0 25.6



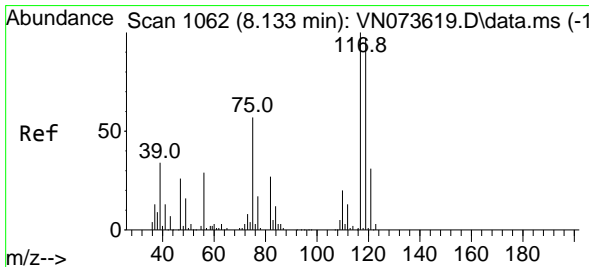
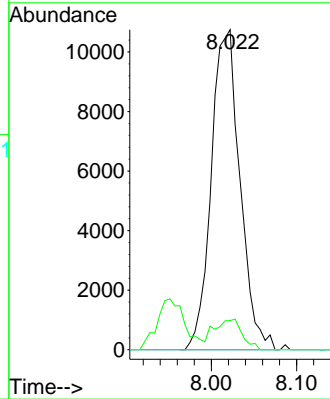
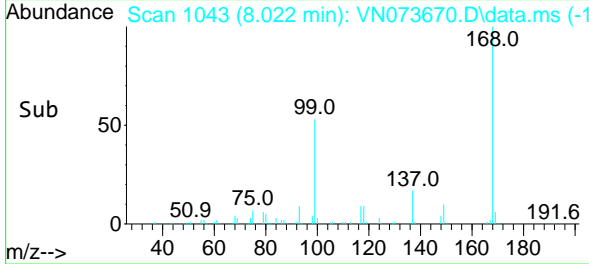


#36
 1,1-Dichloropropene
 Concen: 5.001 ug/l
 RT: 8.022 min Scan# 1043
 Delta R.T. -0.129 min
 Lab File: VN073670.D
 Acq: 01 Aug 2022 19:24

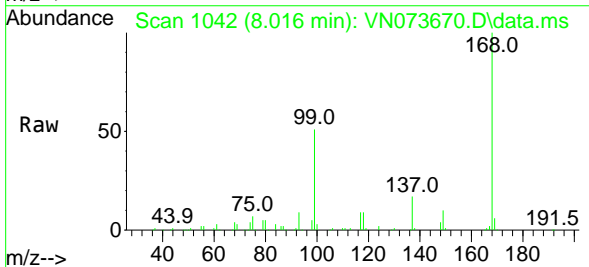
Instrument : MSVOA_N
 ClientSampleId :



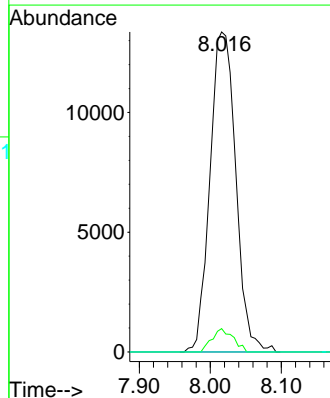
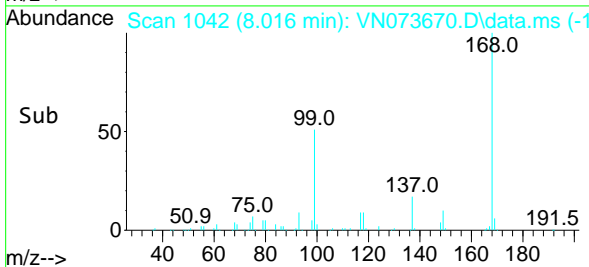
Tgt Ion: 75 Resp: 25147
 Ion Ratio Lower Upper
 75 100
 110 9.3 18.3 54.8#
 77 0.0 25.1 37.7#

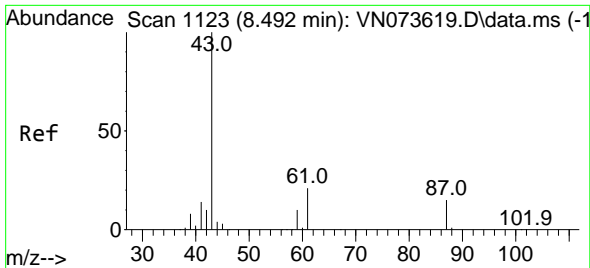


#38
 Carbon Tetrachloride
 Concen: 6.603 ug/l
 RT: 8.016 min Scan# 1042
 Delta R.T. -0.117 min
 Lab File: VN073670.D
 Acq: 01 Aug 2022 19:24



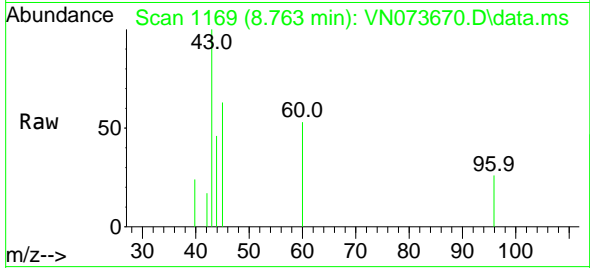
Tgt Ion: 117 Resp: 33725
 Ion Ratio Lower Upper
 117 100
 119 7.3 75.8 113.8#
 121 0.0 24.6 37.0#





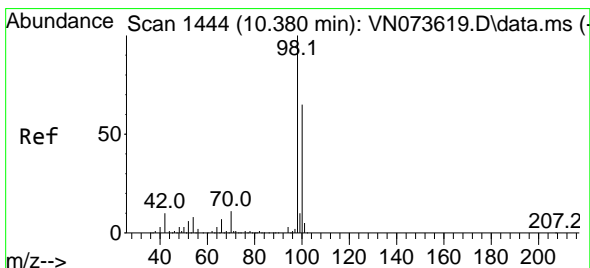
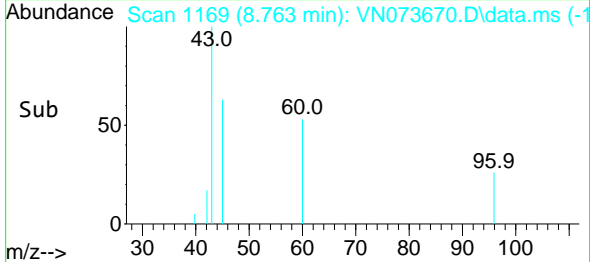
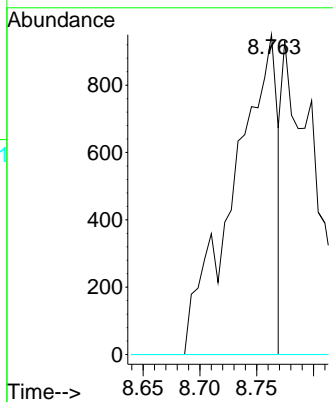
#43
 Isopropyl Acetate
 Concen: 0.286 ug/l
 RT: 8.763 min Scan# 1119
 Delta R.T. 0.271 min
 Lab File: VN073670.D
 Acq: 01 Aug 2022 19:24

Instrument :
 MSVOA_N
 ClientSampleId :



Tgt Ion: 43 Resp: 2561

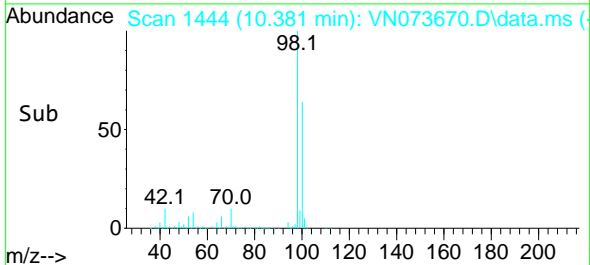
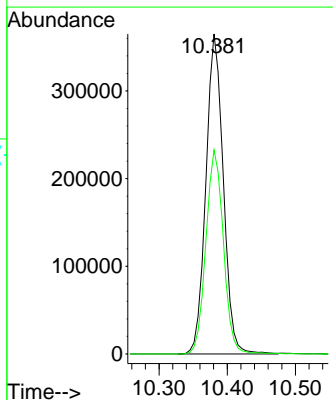
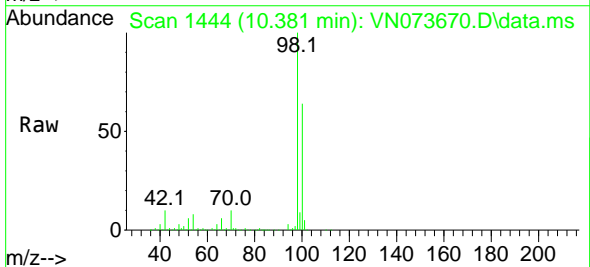
Ion	Ratio	Lower	Upper
43	100		
61	0.0	21.9	32.9#
87	0.0	12.0	18.0#

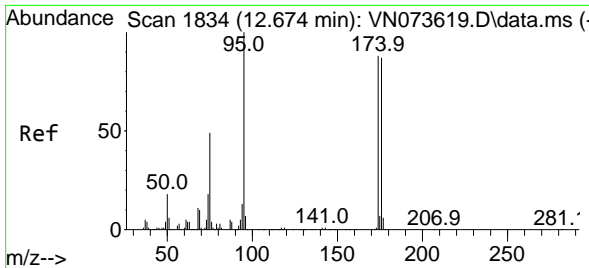


#50
 Toluene-d8
 Concen: 46.785 ug/l
 RT: 10.381 min Scan# 1444
 Delta R.T. 0.000 min
 Lab File: VN073670.D
 Acq: 01 Aug 2022 19:24

Tgt Ion: 98 Resp: 649601

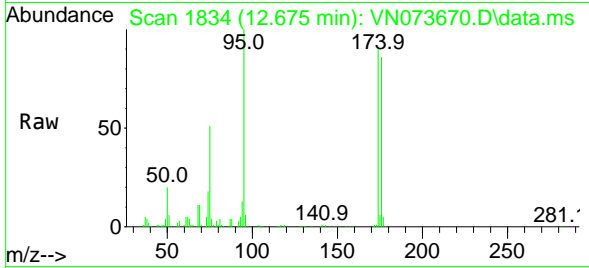
Ion	Ratio	Lower	Upper
98	100		
100	64.2	52.6	78.8



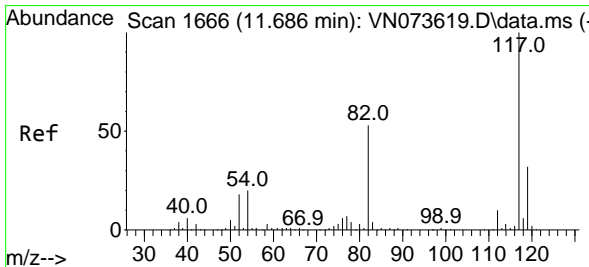
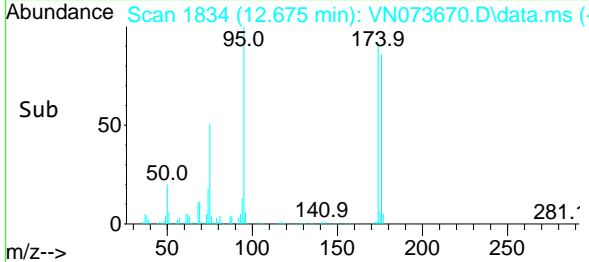
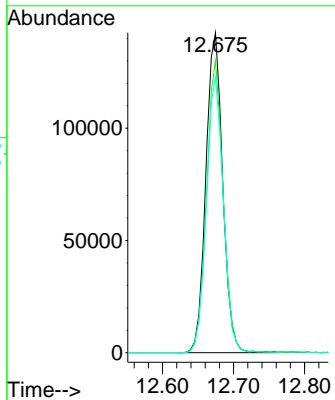


#62
 4-Bromofluorobenzene
 Concen: 50.554 ug/l
 RT: 12.675 min Scan# 1834
 Delta R.T. 0.001 min
 Lab File: VN073670.D
 Acq: 01 Aug 2022 19:24

Instrument : MSVOA_N
 ClientSampleId :

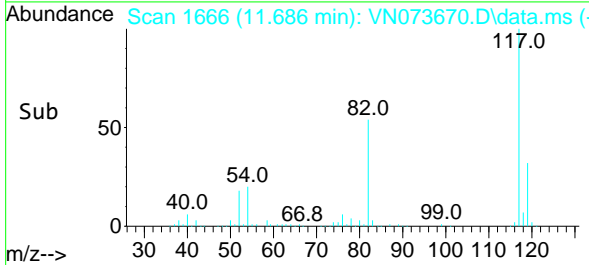
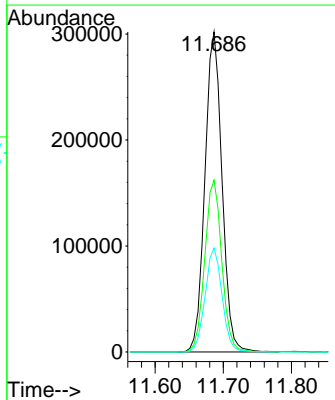
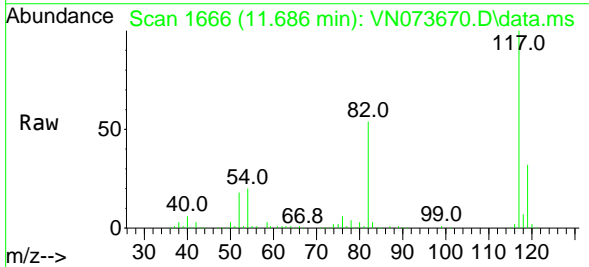


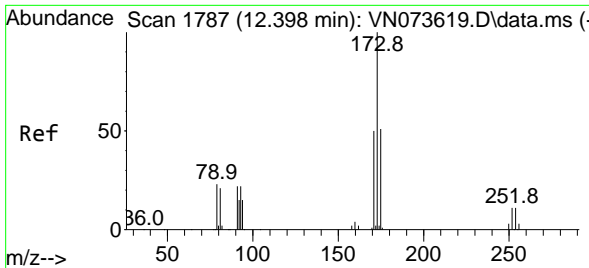
Tgt Ion: 95 Resp: 235020
 Ion Ratio Lower Upper
 95 100
 174 91.2 0.0 167.6
 176 86.2 0.0 163.4



#63
 Chlorobenzene-d5
 Concen: 50.000 ug/l
 RT: 11.686 min Scan# 1666
 Delta R.T. 0.000 min
 Lab File: VN073670.D
 Acq: 01 Aug 2022 19:24

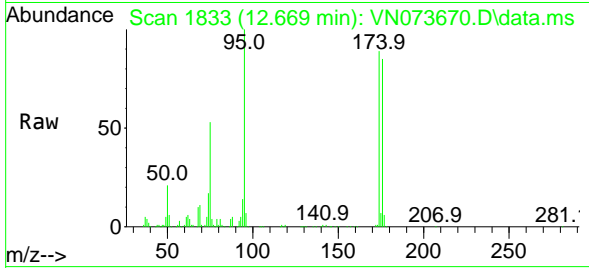
Tgt Ion: 117 Resp: 526898
 Ion Ratio Lower Upper
 117 100
 82 53.7 44.2 66.2
 119 32.5 25.4 38.0



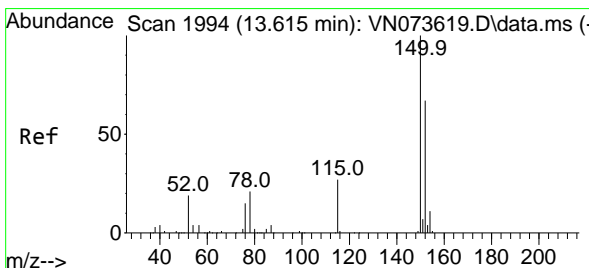
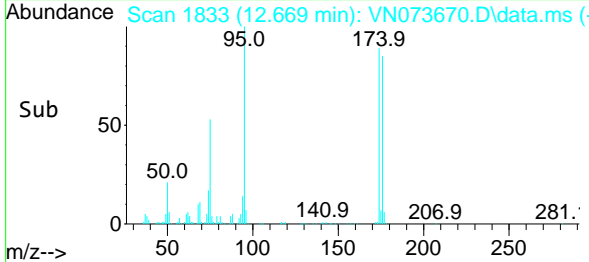
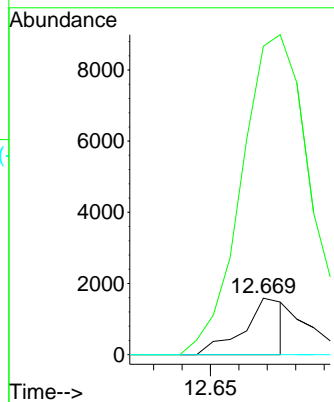


#71
 Bromoform
 Concen: 0.483 ug/l
 RT: 12.669 min Scan# 1833
 Delta R.T. 0.271 min
 Lab File: VN073670.D
 Acq: 01 Aug 2022 19:24

Instrument :
 MSVOA_N
 ClientSampleId :

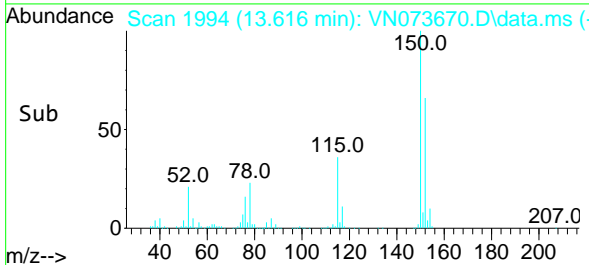
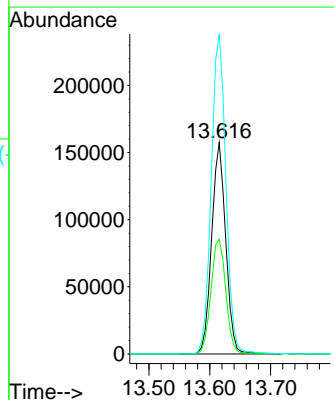
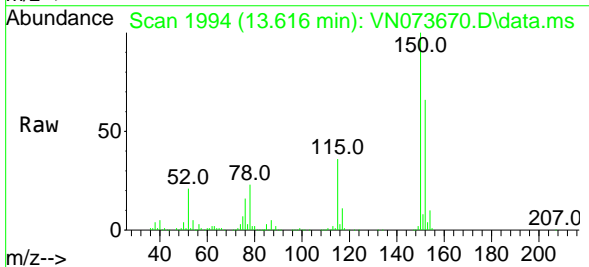


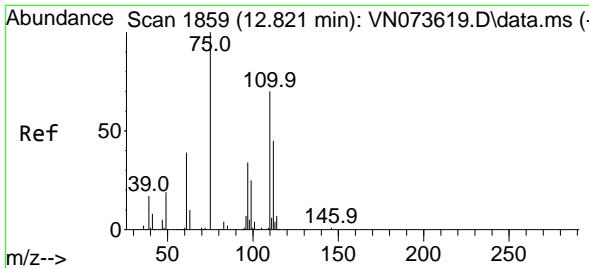
Tgt Ion:173 Resp: 1599
 Ion Ratio Lower Upper
 173 100
 175 0.0 24.6 73.6#
 254 0.0 0.1 0.1#



#72
 1,4-Dichlorobenzene-d4
 Concen: 50.000 ug/l
 RT: 13.616 min Scan# 1994
 Delta R.T. 0.000 min
 Lab File: VN073670.D
 Acq: 01 Aug 2022 19:24

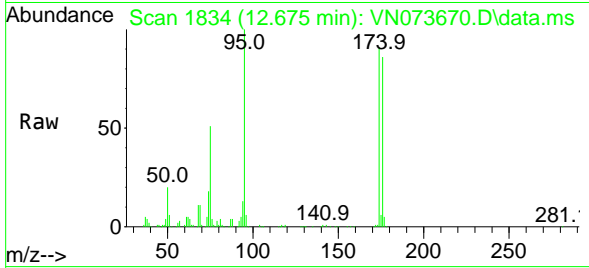
Tgt Ion:152 Resp: 253366
 Ion Ratio Lower Upper
 152 100
 115 57.3 28.9 86.7
 150 156.9 0.0 356.2



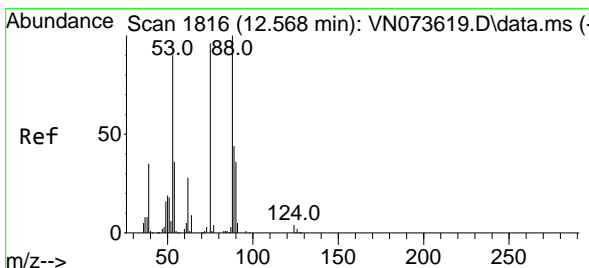
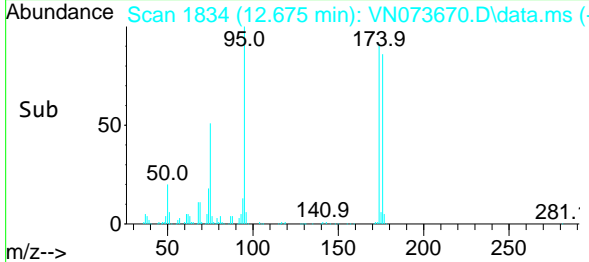
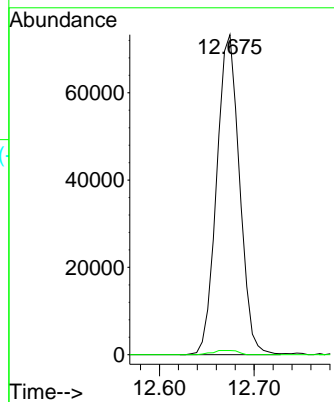


#76
 1,2,3-Trichloropropane
 Concen: 24.891 ug/l
 RT: 12.675 min Scan# 1834
 Delta R.T. -0.146 min
 Lab File: VN073670.D
 Acq: 01 Aug 2022 19:24

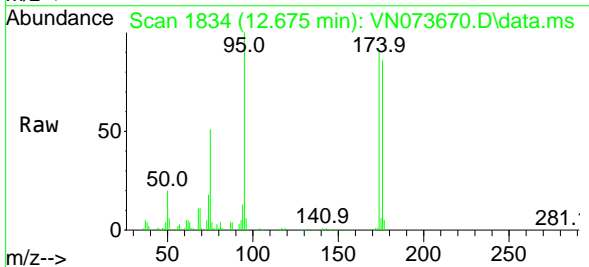
Instrument : MSVOA_N
 ClientSampleId :



Tgt Ion: 75 Resp: 123045
 Ion Ratio Lower Upper
 75 100
 77 1.5 98.5 295.5#



#81
 trans-1,4-Dichloro-2-butene
 Concen: 62.936 ug/l
 RT: 12.675 min Scan# 1834
 Delta R.T. 0.106 min
 Lab File: VN073670.D
 Acq: 01 Aug 2022 19:24



Tgt Ion: 75 Resp: 123045
 Ion Ratio Lower Upper
 75 100
 53 0.0 78.0 117.0#
 89 0.0 37.2 55.8#

