

Data Path : Z:\voasrv\HPCHEM1\MSVOA_N\Data\VN080222\
 Data File : VN073681.D
 Acq On : 02 Aug 2022 12:44
 Operator : JC\MD
 Sample : N3971-05
 Misc : 5.0mL/MSVOA_N/WATER
 ALS Vial : 7 Sample Multiplier: 1

Instrument :
 MSVOA_N
 ClientSampleId :
 MW-8R

Quant Time: Aug 03 02:04:37 2022
 Quant Method : Z:\voasrv\HPCHEM1\MSVOA_N\methods\82N072822W.M
 Quant Title : SW846 8260
 QLast Update : Fri Jul 29 02:20:25 2022
 Response via : Initial Calibration

Compound	R.T.	QIon	Response	Conc	Units	Dev(Min)

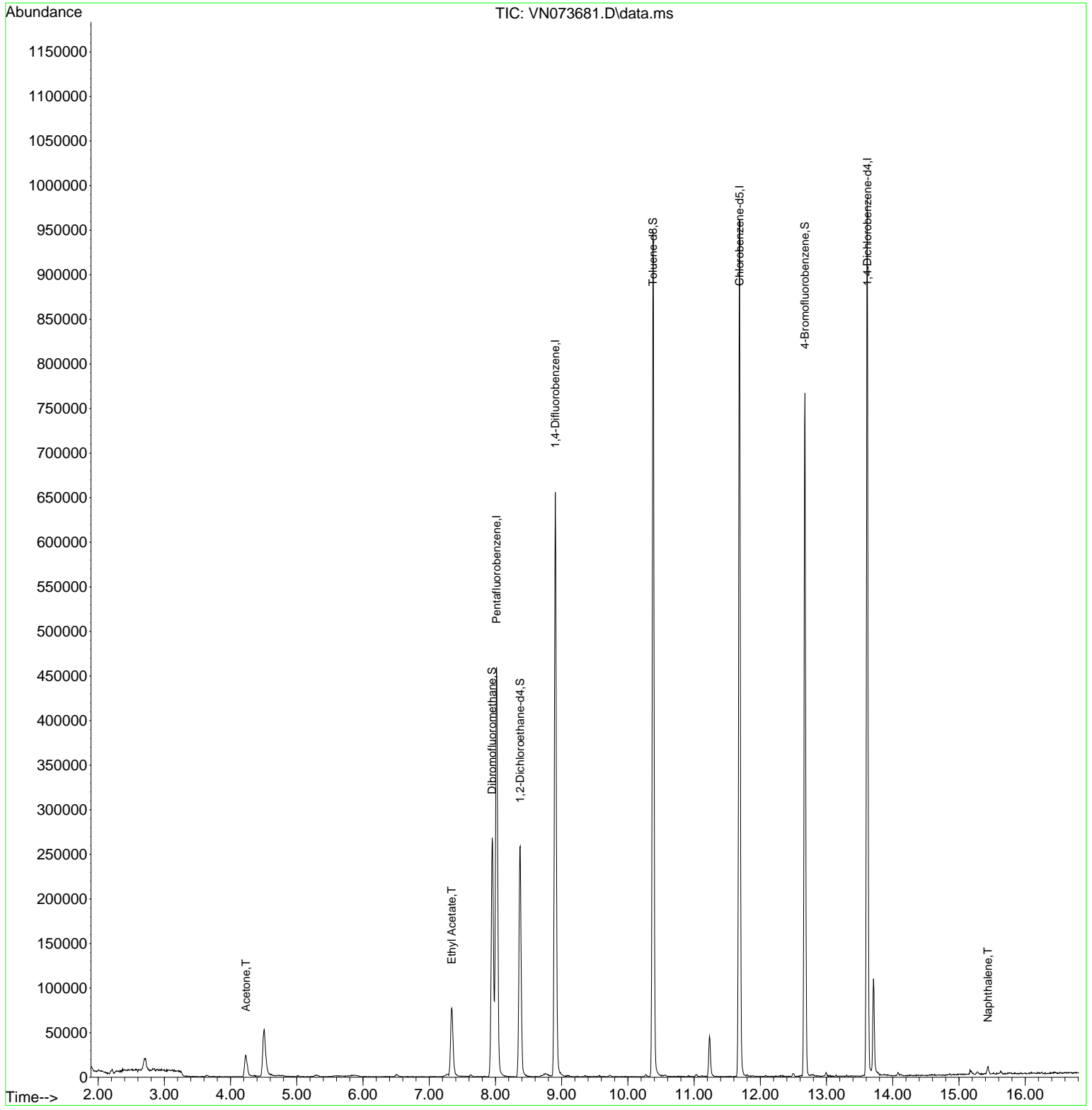
Internal Standards						
1) Pentafluorobenzene	8.016	168	369402	50.000	ug/l	0.00
34) 1,4-Difluorobenzene	8.904	114	589860	50.000	ug/l	0.00
63) Chlorobenzene-d5	11.686	117	565849	50.000	ug/l	0.00
72) 1,4-Dichlorobenzene-d4	13.615	152	268943	50.000	ug/l	0.00
System Monitoring Compounds						
33) 1,2-Dichloroethane-d4	8.375	65	213770	47.486	ug/l	0.00
Spiked Amount	50.000	Range	74 - 125	Recovery	=	94.980%
35) Dibromofluoromethane	7.951	113	199307	53.809	ug/l	0.00
Spiked Amount	50.000	Range	75 - 124	Recovery	=	107.620%
50) Toluene-d8	10.380	98	665437	45.655	ug/l	0.00
Spiked Amount	50.000	Range	86 - 113	Recovery	=	91.300%
62) 4-Bromofluorobenzene	12.674	95	247802	50.741	ug/l	0.00
Spiked Amount	50.000	Range	83 - 123	Recovery	=	101.480%
Target Compounds						
						Qvalue
16) Acetone	4.234	43	45943	19.001	ug/l	97
37) Ethyl Acetate	7.339	43	123636	17.784	ug/l	99
95) Naphthalene	15.439	128	8992	0.588	ug/l #	92

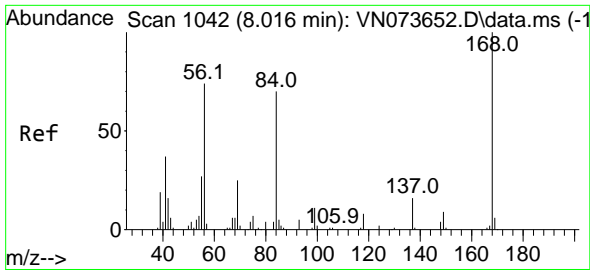
(#) = qualifier out of range (m) = manual integration (+) = signals summed

Data Path : Z:\voasrv\HPCHEM1\MSVOA_N\Data\VN080222\
 Data File : VN073681.D
 Acq On : 02 Aug 2022 12:44
 Operator : JC\MD
 Sample : N3971-05
 Misc : 5.0mL/MSVOA_N/WATER
 ALS Vial : 7 Sample Multiplier: 1

Instrument :
 MSVOA_N
ClientSampleId :
 MW-8R

Quant Time: Aug 03 02:04:37 2022
 Quant Method : Z:\voasrv\HPCHEM1\MSVOA_N\methods\82N072822W.M
 Quant Title : SW846 8260
 QLast Update : Fri Jul 29 02:20:25 2022
 Response via : Initial Calibration

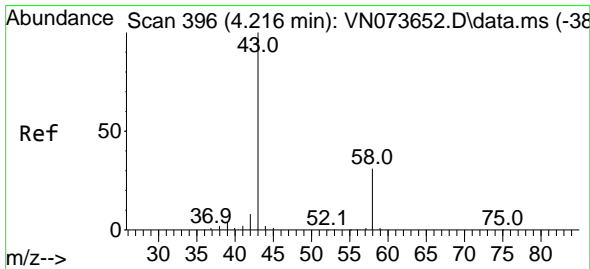
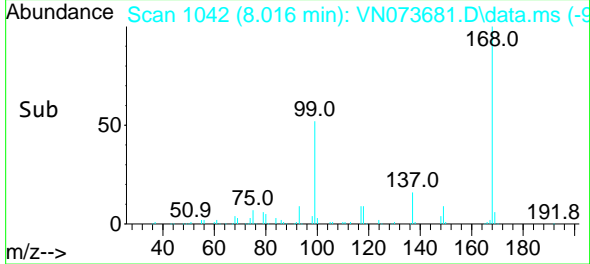
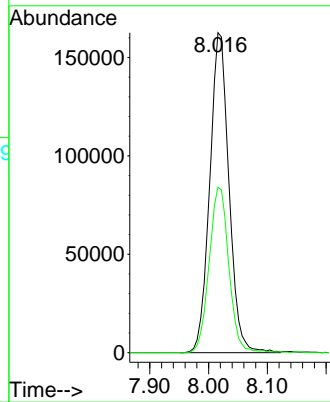
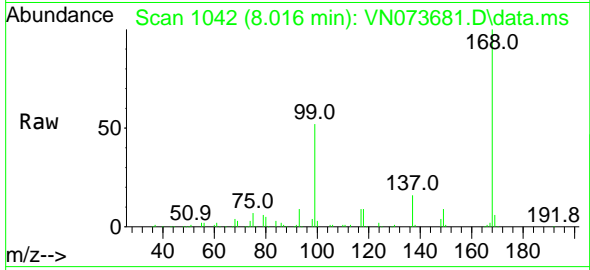




#1
 Pentafluorobenzene
 Concen: 50.000 ug/l
 RT: 8.016 min Scan# 1042
 Delta R.T. -0.000 min
 Lab File: VN073681.D
 Acq: 02 Aug 2022 12:44

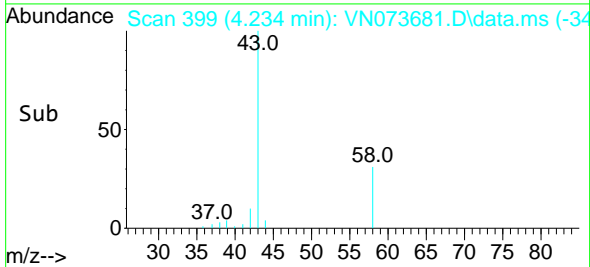
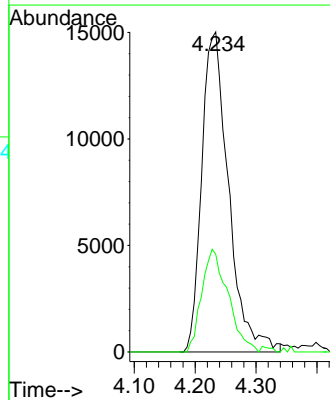
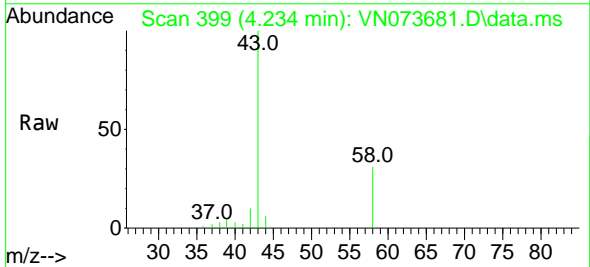
Instrument :
 MSVOA_N
 ClientSampleId :
 MW-8R

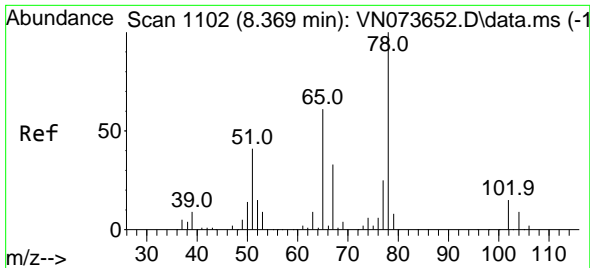
Tgt Ion:168 Resp: 369402
 Ion Ratio Lower Upper
 168 100
 99 51.7 42.3 63.5



#16
 Acetone
 Concen: 19.001 ug/l
 RT: 4.234 min Scan# 399
 Delta R.T. 0.012 min
 Lab File: VN073681.D
 Acq: 02 Aug 2022 12:44

Tgt Ion: 43 Resp: 45943
 Ion Ratio Lower Upper
 43 100
 58 30.6 26.0 39.0

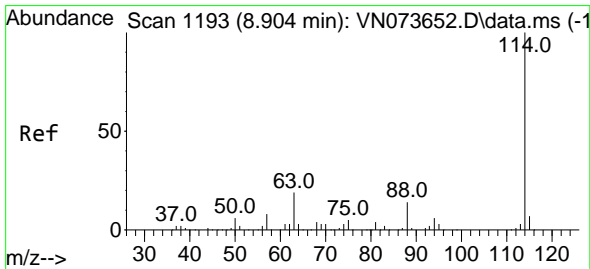
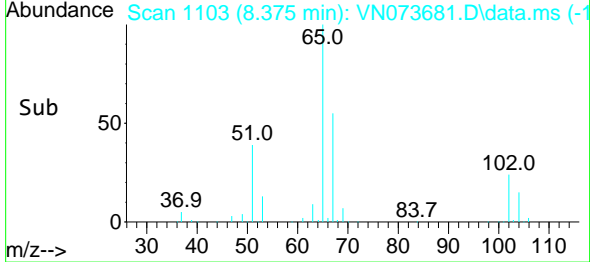
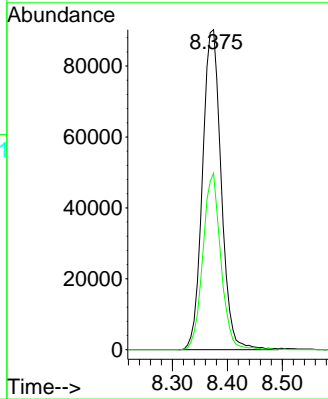
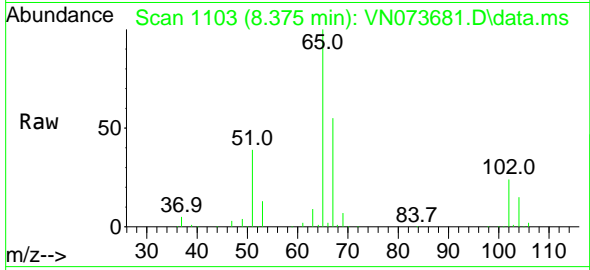




#33
 1,2-Dichloroethane-d4
 Concen: 47.486 ug/l
 RT: 8.375 min Scan# 1103
 Delta R.T. 0.006 min
 Lab File: VN073681.D
 Acq: 02 Aug 2022 12:44

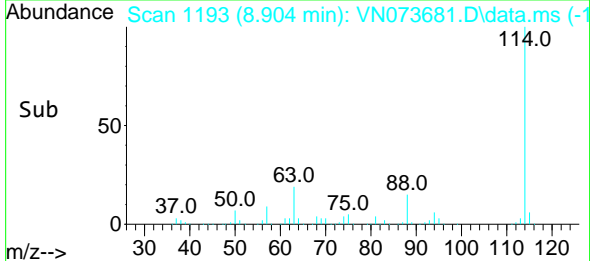
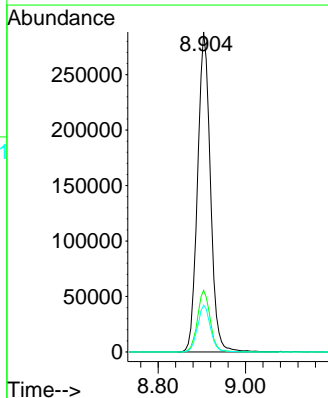
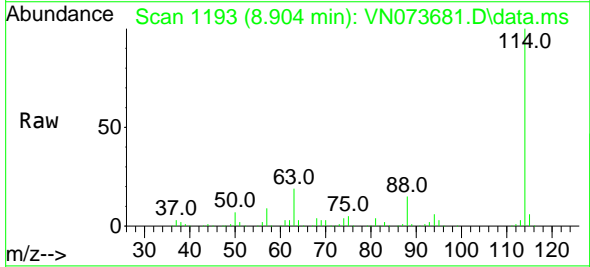
Instrument : MSVOA_N
 ClientSampleId : MW-8R

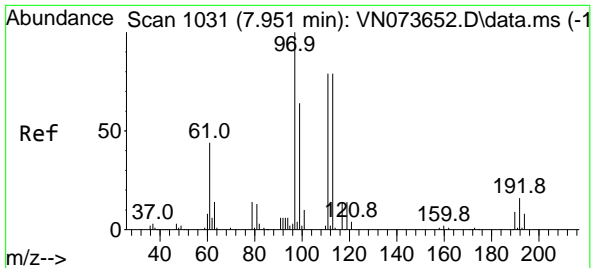
Tgt Ion: 65 Resp: 213770
 Ion Ratio Lower Upper
 65 100
 67 52.7 0.0 104.8



#34
 1,4-Difluorobenzene
 Concen: 50.000 ug/l
 RT: 8.904 min Scan# 1193
 Delta R.T. 0.000 min
 Lab File: VN073681.D
 Acq: 02 Aug 2022 12:44

Tgt Ion: 114 Resp: 589860
 Ion Ratio Lower Upper
 114 100
 63 19.2 0.0 40.0
 88 14.6 0.0 32.6



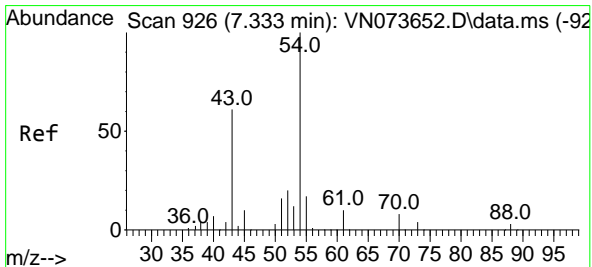
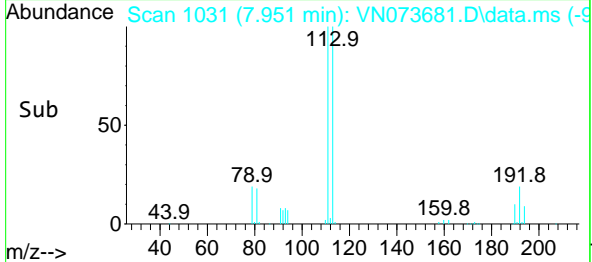
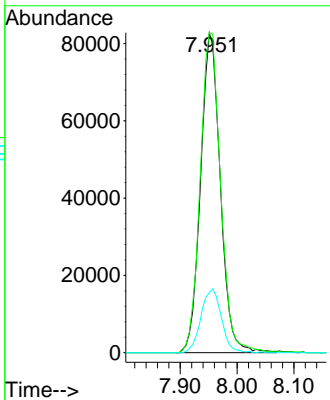
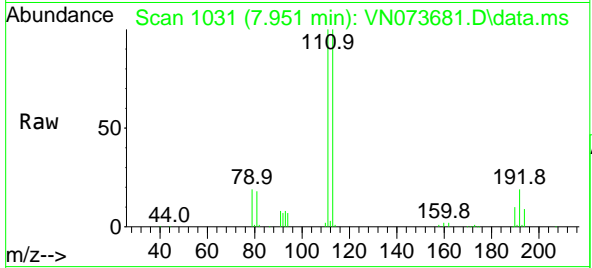


#35
 Dibromofluoromethane
 Concen: 53.809 ug/l
 RT: 7.951 min Scan# 1031
 Delta R.T. 0.000 min
 Lab File: VN073681.D
 Acq: 02 Aug 2022 12:44

Instrument : MSVOA_N
 ClientSampleId : MW-8R

Tgt Ion:113 Resp: 199307

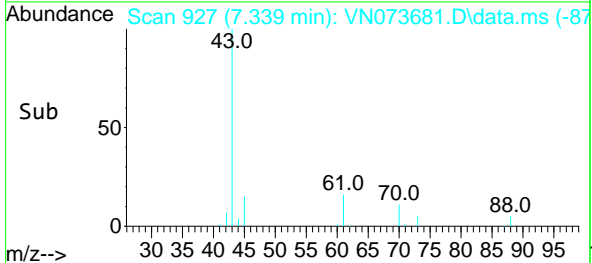
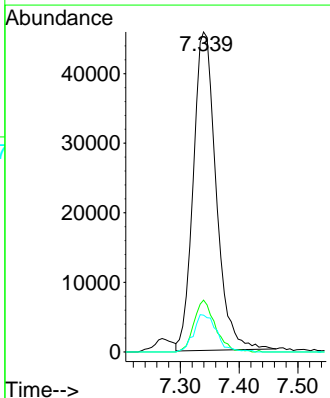
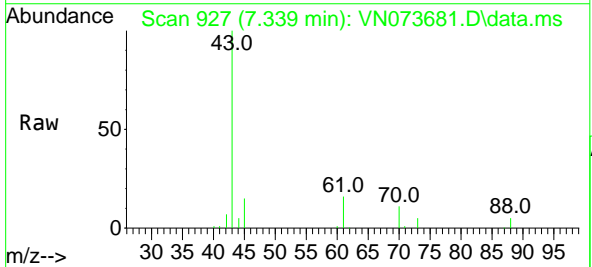
Ion	Ratio	Lower	Upper
113	100		
111	103.2	81.4	122.0
192	20.6	17.0	25.6

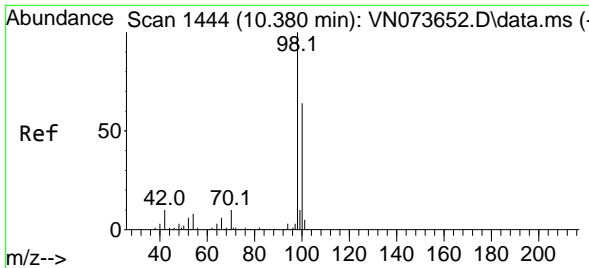


#37
 Ethyl Acetate
 Concen: 17.784 ug/l
 RT: 7.339 min Scan# 927
 Delta R.T. 0.000 min
 Lab File: VN073681.D
 Acq: 02 Aug 2022 12:44

Tgt Ion: 43 Resp: 123636

Ion	Ratio	Lower	Upper
43	100		
61	15.2	11.8	17.6
70	11.7	9.3	13.9

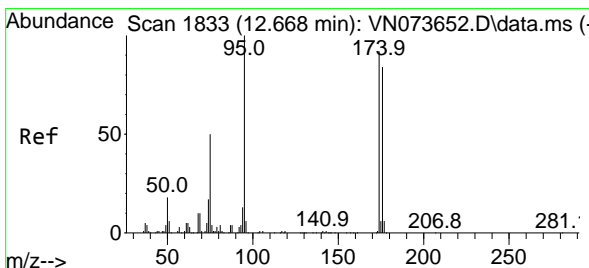
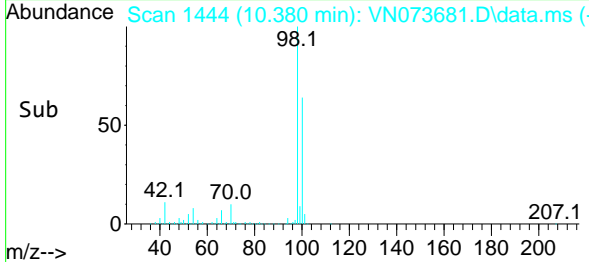
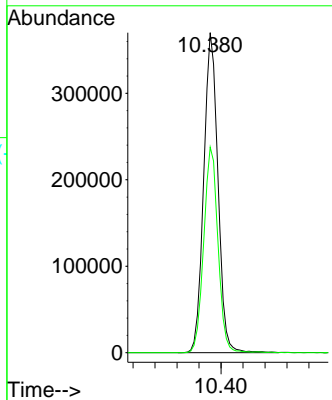
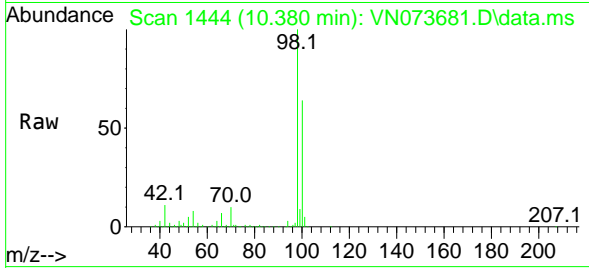




#50
 Toluene-d8
 Concen: 45.655 ug/l
 RT: 10.380 min Scan# 1444
 Delta R.T. 0.000 min
 Lab File: VN073681.D
 Acq: 02 Aug 2022 12:44

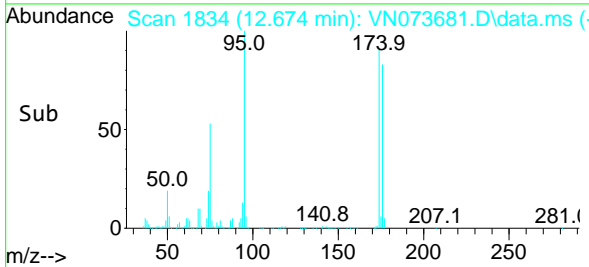
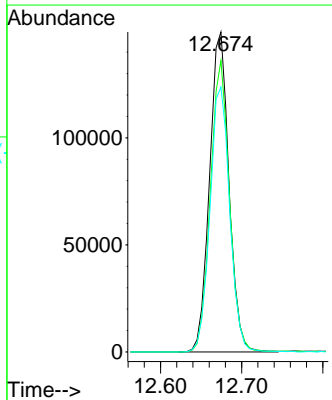
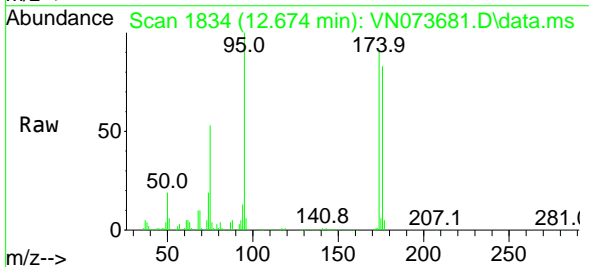
Instrument :
 MSVOA_N
 ClientSampleId :
 MW-8R

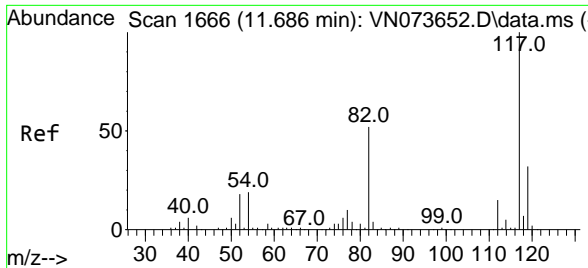
Tgt Ion: 98 Resp: 665437
 Ion Ratio Lower Upper
 98 100
 100 64.1 52.6 78.8



#62
 4-Bromofluorobenzene
 Concen: 50.741 ug/l
 RT: 12.674 min Scan# 1834
 Delta R.T. 0.000 min
 Lab File: VN073681.D
 Acq: 02 Aug 2022 12:44

Tgt Ion: 95 Resp: 247802
 Ion Ratio Lower Upper
 95 100
 174 89.5 0.0 167.6
 176 84.4 0.0 163.4



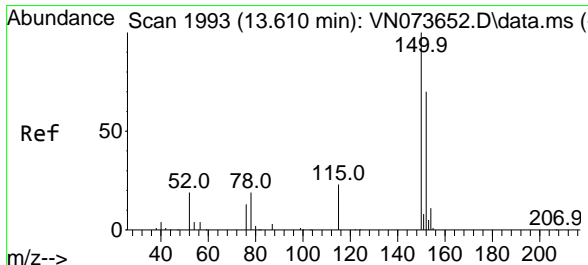
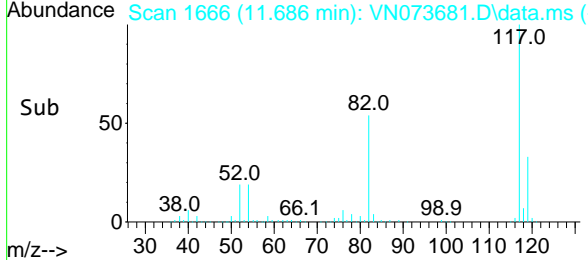
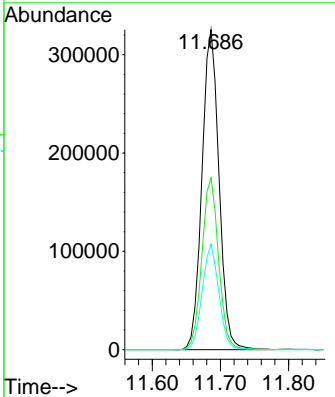
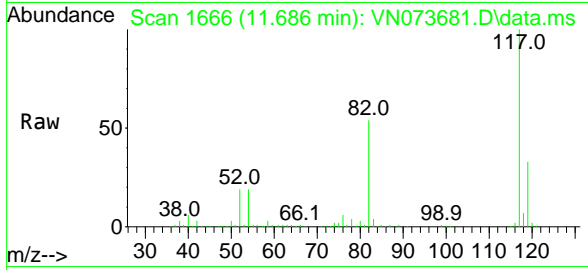


#63
 Chlorobenzene-d5
 Concen: 50.000 ug/l
 RT: 11.686 min Scan# 1170
 Delta R.T. 0.000 min
 Lab File: VN073681.D
 Acq: 02 Aug 2022 12:44

Instrument : MSVOA_N
 ClientSampleId : MW-8R

Tgt Ion:117 Resp: 565849

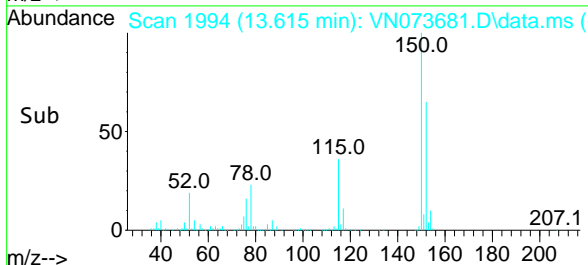
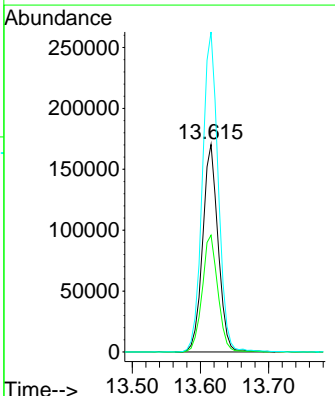
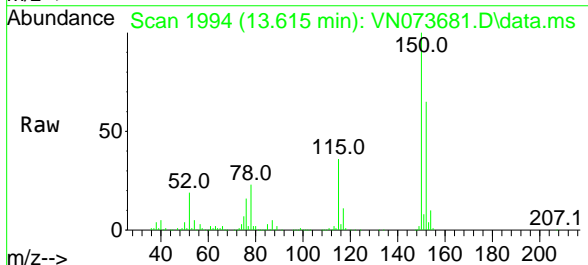
Ion	Ratio	Lower	Upper
117	100		
82	53.7	44.2	66.2
119	33.0	25.4	38.0

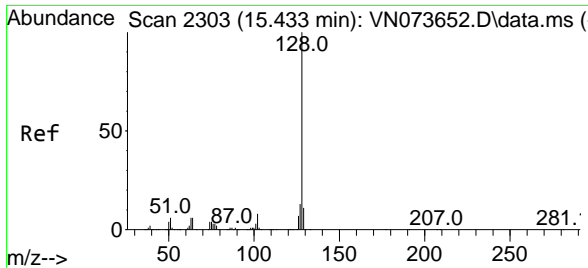


#72
 1,4-Dichlorobenzene-d4
 Concen: 50.000 ug/l
 RT: 13.615 min Scan# 1994
 Delta R.T. 0.000 min
 Lab File: VN073681.D
 Acq: 02 Aug 2022 12:44

Tgt Ion:152 Resp: 268943

Ion	Ratio	Lower	Upper
152	100		
115	57.1	28.9	86.7
150	157.9	0.0	356.2





#95
 Naphthalene
 Concen: 0.588 ug/l
 RT: 15.439 min Scan# 21
 Delta R.T. 0.006 min
 Lab File: VN073681.D
 Acq: 02 Aug 2022 12:44

Instrument : MSVOA_N
 ClientSampleId : MW-8R

Tgt Ion:128 Resp: 8992

Ion	Ratio	Lower	Upper
128	100		
127	12.1	10.3	15.5
129	4.7	8.6	13.0#

