

Data Path : Z:\VOASRV\HPCHEM1\MSVOA N\DATA\VN080418\
 Data File : VN050365.D
 Acq On : 4 Aug 2018 14:32
 Operator : MD\SY
 Sample : J4328-05
 Misc : 5.00mL/MSVOA N/WATER
 ALS Vial : 12 Sample Multiplier: 1

Instrument :
 MSVOA_N
 ClientSampleId :
 MW-23

Integration Parameters: RTEINT.P
 Integrator: RTE
 Smoothing : ON Filtering: 5
 Sampling : 1 Min Area: 3 % of largest Peak
 Start Thrs: 0.2 Max Peaks: 100
 Stop Thrs : 0 Peak Location: TOP

If leading or trailing edge < 100 prefer < Baseline drop else tangent >
 Peak separation: 5

Method : Z:\VOASRV\HPCHEM1\MSVOA_N\METHODS\82N072418W.M
 Title : SW846 8260

Signal : TIC

peak #	R.T. min	first scan	max scan	last scan	PK TY	peak height	corr. area	corr. % max.	% of total
1	1.654	3	20	55	rBV	11284875	17157308	61.08%	27.167%
2	7.593	1847	1867	1878	rBV2	549143	1373968	4.89%	2.176%
3	7.667	1878	1890	1906	rVB	858928	2013064	7.17%	3.187%
4	8.033	1987	2004	2024	rBV3	737187	1860062	6.62%	2.945%
5	8.586	2160	2176	2206	rBV	1223364	2517570	8.96%	3.986%
6	10.091	2627	2644	2676	rBV	2189868	4083755	14.54%	6.466%
7	11.435	3039	3062	3092	rBV	14737318	28088620	100.00%	44.476%
8	12.403	3350	3363	3378	rBV	1494931	2479750	8.83%	3.926%
9	13.345	3644	3656	3677	rVB2	1639881	3240915	11.54%	5.132%
10	13.544	3701	3718	3732	rBV	192815	340235	1.21%	0.539%

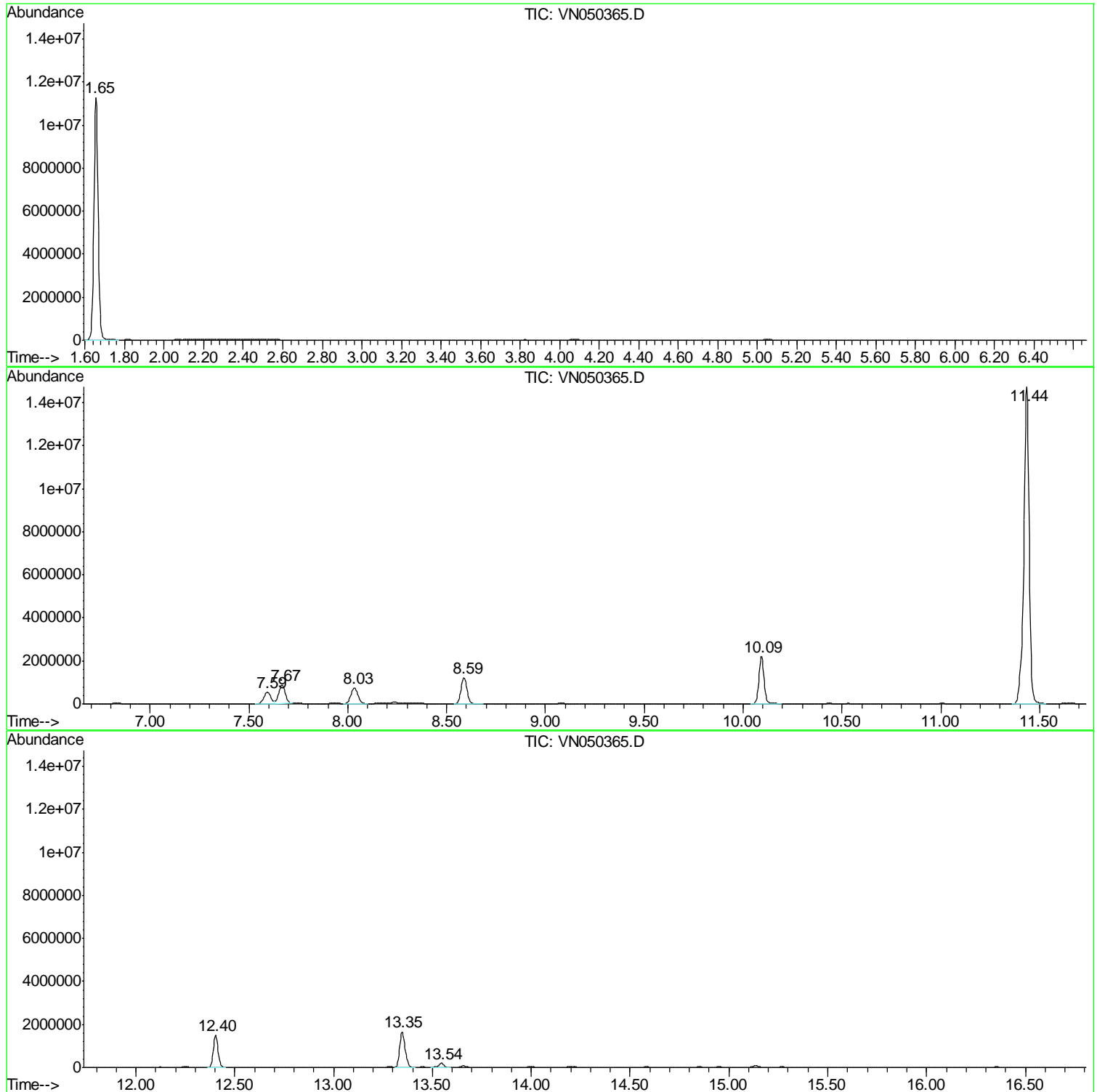
Sum of corrected areas: 63155247

Data Path : Z:\VOASRV\HPCHEM1\MSVOA N\DATA\VN080418\
Data File : VN050365.D
Acq On : 4 Aug 2018 14:32
Operator : MD\SY
Sample : J4328-05
Misc : 5.00mL/MSVOA N/WATER
ALS Vial : 12 Sample Multiplier: 1

Instrument :
MSVOA_N
ClientSampled :
MW-23

Quant Method : Z:\VOASRV\HPCHEM1\MSVOA_N\METHODS\82N072418W.M
Quant Title : SW846 8260

TIC Library : C:\DATABASE\NIST11.L
TIC Integration Parameters: LSCINT.P



Data Path : Z:\VOASRV\HPCHEM1\MSVOA N\DATA\VN080418\
 Data File : VN050365.D
 Acq On : 4 Aug 2018 14:32
 Operator : MD\SY
 Sample : J4328-05
 Misc : 5.00mL/MSVOA N/WATER
 ALS Vial : 12 Sample Multiplier: 1

Instrument :
 MSVOA_N
 ClientSampled :
 MW-23

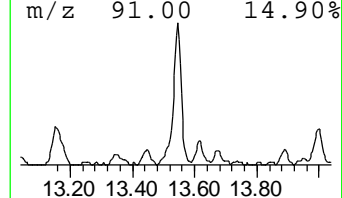
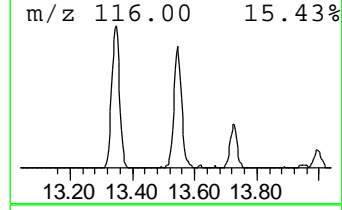
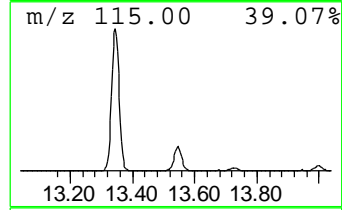
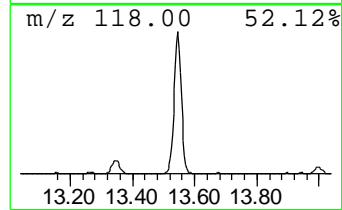
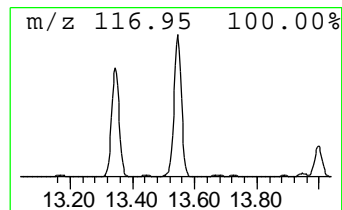
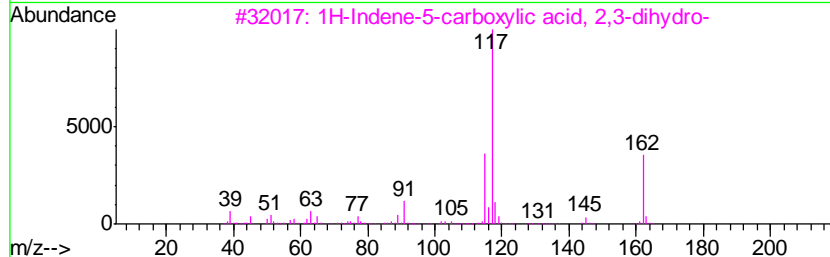
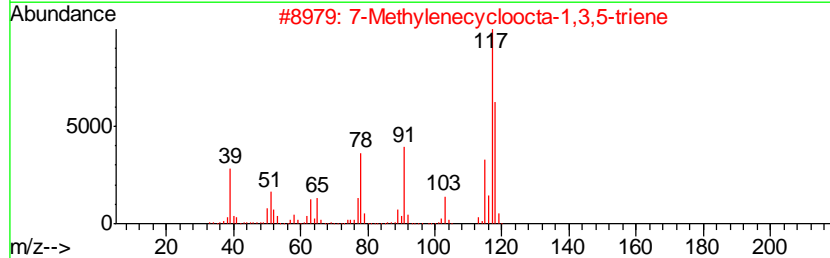
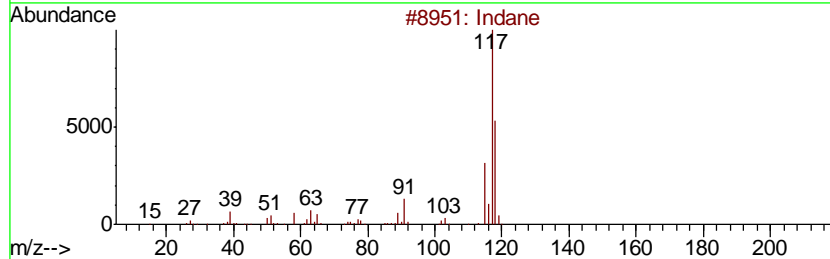
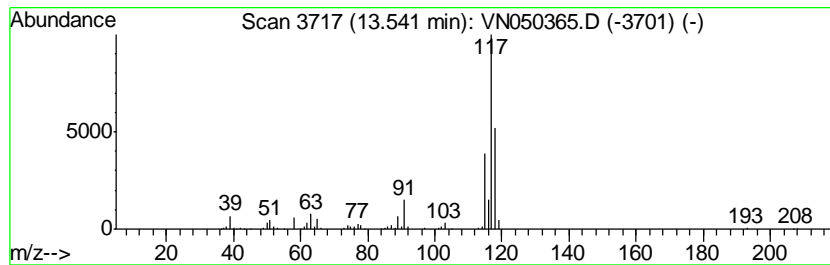
Quant Method : Z:\VOASRV\HPCHEM1\MSVOA_N\METHODS\82N072418W.M
 Quant Title : SW846 8260

TIC Library : C:\DATABASE\NIST11.L
 TIC Integration Parameters: LSCINT.P

 Peak Number 2 Indane Concentration Rank 2

R.T.	EstConc	Area	Relative to ISTD	R.T.
13.54	5.25 ug/l	340235	1,4-Dichlorobenzene-d4	13.35

Hit#	of	Tentative ID	MW	MolForm	CAS#	Qual
1	5	Indane	118	C9H10	000496-11-7	95
2		7-Methylenecycloocta-1,3,5-triene	118	C9H10	002570-13-0	68
3		1H-Indene-5-carboxylic acid, 2,3...	162	C10H10O2	1000337-61-3	64
4		Benzene, cyclopropyl-	118	C9H10	000873-49-4	62
5		Bicyclo[4.2.0]octa-1,3,5-triene,...	118	C9H10	055337-80-9	62



Data Path : Z:\VOASRV\HPCHEM1\MSVOA_N\DATA\VN080418\
Data File : VN050365.D
Acq On : 4 Aug 2018 14:32
Operator : MD\SY
Sample : J4328-05
Misc : 5.00mL/MSVOA_N/WATER
ALS Vial : 12 Sample Multiplier: 1

Instrument :
MSVOA_N
ClientSampleId :
MW-23

Quant Method : Z:\VOASRV\HPCHEM1\MSVOA_N\METHODS\82N072418W.M
Quant Title : SW846 8260

TIC Library : C:\DATABASE\NIST11.L
TIC Integration Parameters: LSCINT.P

TIC Top Hit name	RT	EstConc	Units	Response	--Internal Standard--			
					#	RT	Resp	Conc
Indane	13.54	5.3	ug/l	340235	4	13.35	3240920	50.0