

Data Path : Z:\VOASRV\HPCHEM1\MSVOA N\DATA\VN080618\
 Data File : VN050405.D
 Acq On : 7 Aug 2018 00:58
 Operator : MD\SY
 Sample : J4317-01
 Misc : 5.00mL/MSVOA N/WATER
 ALS Vial : 34 Sample Multiplier: 1

Instrument :
 MSVOA_N
 ClientSampleID :
 N28424

Quant Time: Aug 07 09:46:43 2018
 Quant Method : Z:\VOASRV\HPCHEM1\MSVOA_N\METHODS\82N080618W.M
 Quant Title : SW846 8260
 QLast Update : Tue Aug 07 05:22:15 2018
 Response via : Initial Calibration

Internal Standards	R.T.	QIon	Response	Conc	Units	Dev(Min)
1) Pentafluorobenzene	7.67	168	661516	50.00	ug/l	0.00
34) 1,4-Difluorobenzene	8.59	114	1043919	50.00	ug/l	0.00
63) Chlorobenzene-d5	11.41	117	896170	50.00	ug/l	0.00
72) 1,4-Dichlorobenzene-d4	13.35	152	373431	50.00	ug/l	0.00

System Monitoring Compounds

33) 1,2-Dichloroethane-d4	8.03	65	454746	51.45	ug/l	0.00
Spiked Amount				50.000		
			Recovery	=	102.90%	
35) Dibromofluoromethane	7.59	113	409235	48.86	ug/l	0.00
Spiked Amount				50.000		
			Recovery	=	97.72%	
50) Toluene-d8	10.09	98	1441368	45.77	ug/l	0.00
Spiked Amount				50.000		
			Recovery	=	91.54%	
62) 4-Bromofluorobenzene	12.40	95	417578	38.90	ug/l	0.00
Spiked Amount				50.000		
			Recovery	=	77.80%	

Target Compounds

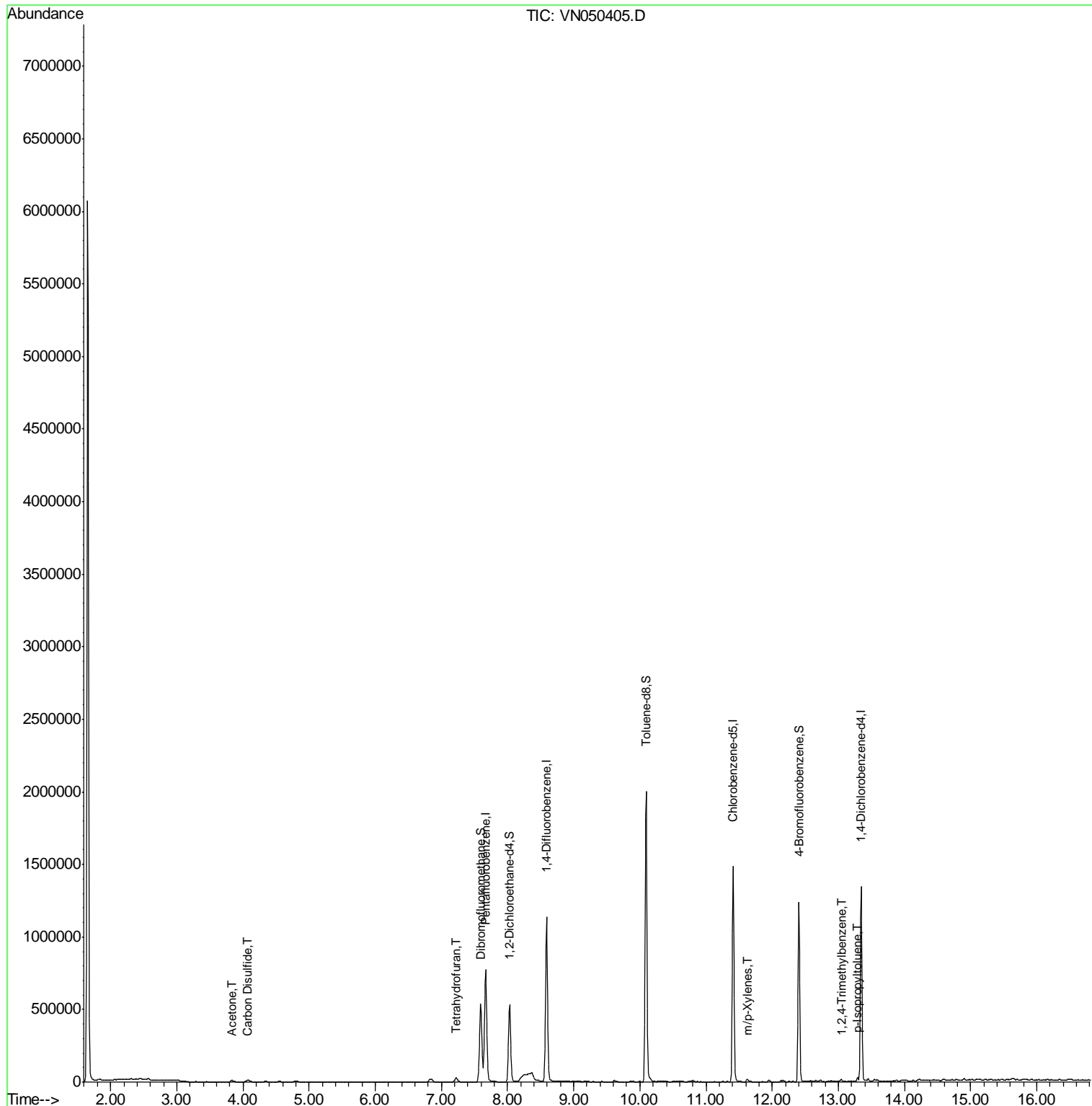
						Qvalue
16) Acetone	3.83	43	15798	5.64	ug/l	96
17) Carbon Disulfide	4.06	76	10502	0.45	ug/l #	94
29) Tetrahydrofuran	7.22	42	21837	9.32	ug/l #	78
68) m/p-Xylenes	11.62	106	4839	0.35	ug/l	94
84) 1,2,4-Trimethylbenzene	13.04	105	9295	0.40	ug/l	89
86) p-Isopropyltoluene	13.29	119	14664	0.65	ug/l	98

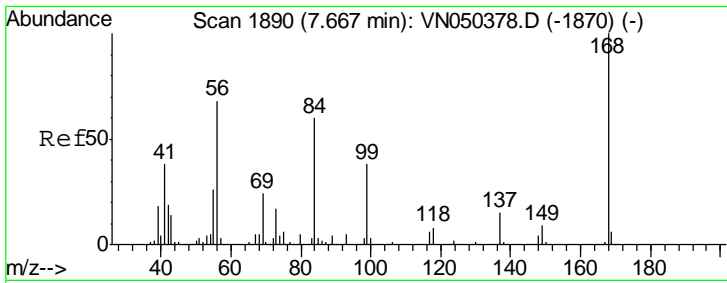
(#) = qualifier out of range (m) = manual integration (+) = signals summed

Data Path : Z:\VOASRV\HPCHEM1\MSVOA N\DATA\VN080618\
 Data File : VN050405.D
 Acq On : 7 Aug 2018 00:58
 Operator : MD\SY
 Sample : J4317-01
 Misc : 5.00mL/MSVOA N/WATER
 ALS Vial : 34 Sample Multiplier: 1

Instrument :
 MSVOA_N
 ClientSampled :
 N28424

Quant Time: Aug 07 09:46:43 2018
 Quant Method : Z:\VOASRV\HPCHEM1\MSVOA_N\METHODS\82N080618W.M
 Quant Title : SW846 8260
 QLast Update : Tue Aug 07 05:22:15 2018
 Response via : Initial Calibration

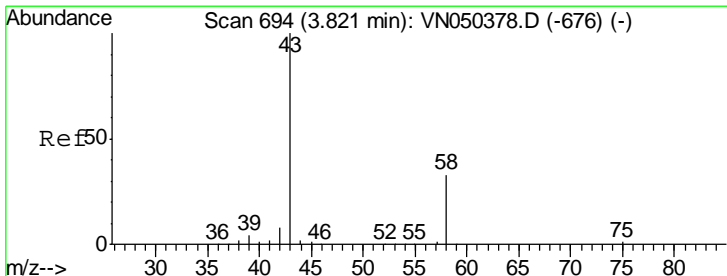
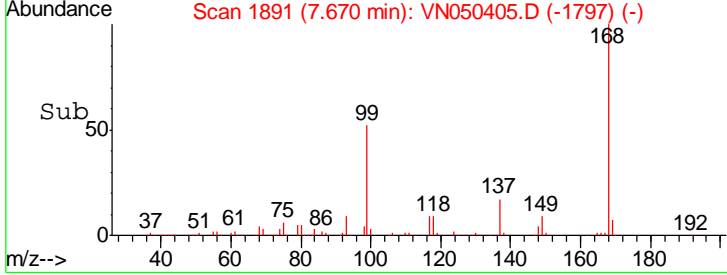
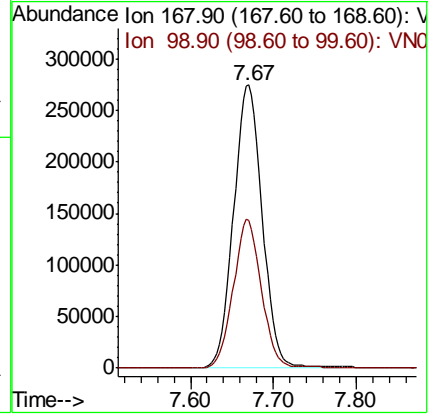
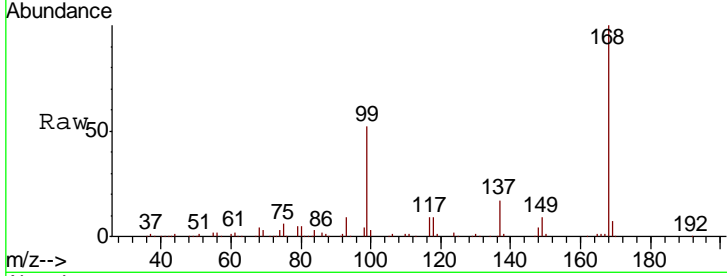




#1
 Pentafluorobenzene
 Concen: 50.00 ug/l
 RT: 7.67 min Scan# 1891
 Delta R.T. 0.00 min
 Lab File: VN050405.D
 Acq: 7 Aug 2018 00:58

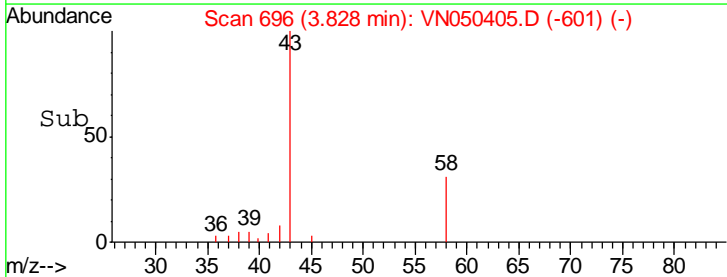
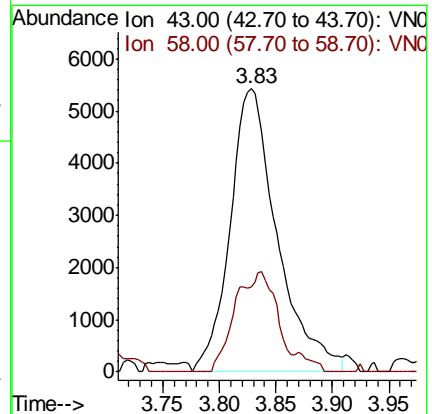
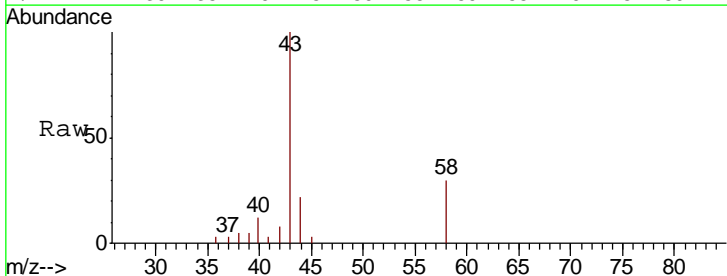
Instrument :
 MSVOA_N
 ClientSampled :
 N28424

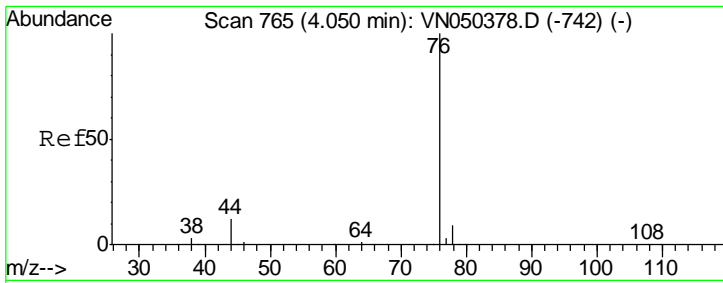
Tgt Ion	Resp	Lower	Upper
168	100		
99	52.2	40.0	60.0



#16
 Acetone
 Concen: 5.64 ug/l
 RT: 3.83 min Scan# 696
 Delta R.T. 0.01 min
 Lab File: VN050405.D
 Acq: 7 Aug 2018 00:58

Tgt Ion	Resp	Lower	Upper
43	100		
58	29.8	25.8	38.8

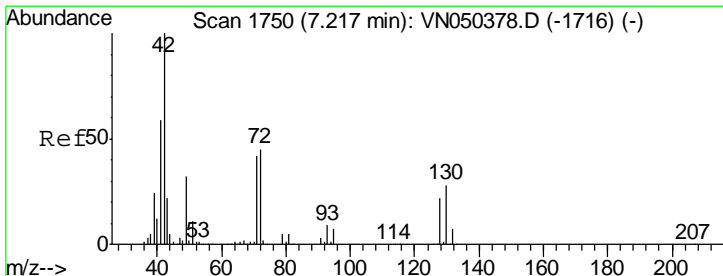
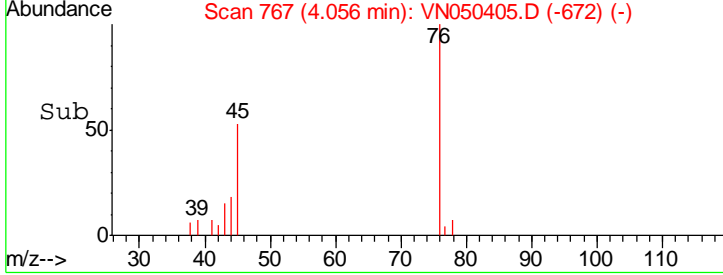
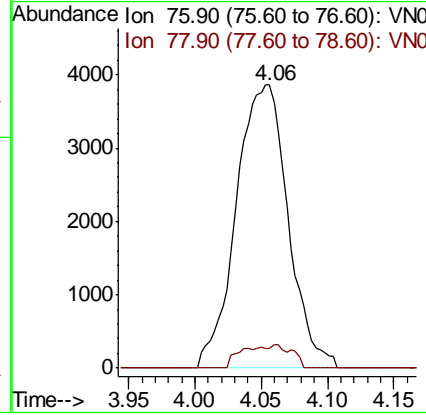
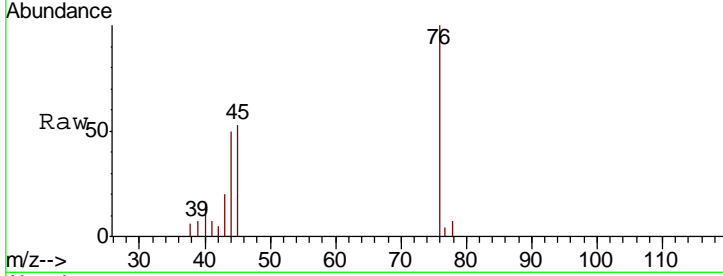




#17
 Carbon Disulfide
 Concen: 0.45 ug/l
 RT: 4.06 min Scan# 767
 Delta R.T. 0.01 min
 Lab File: VN050405.D
 Acq: 7 Aug 2018 00:58

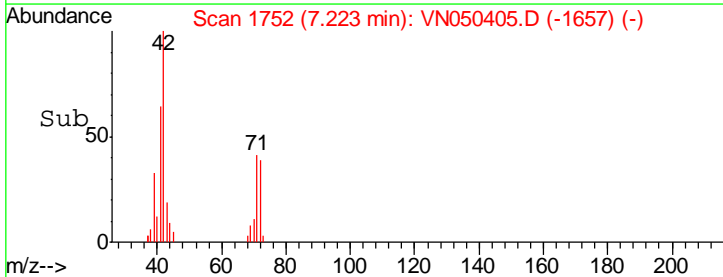
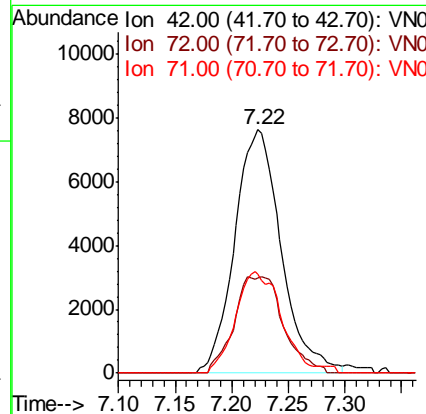
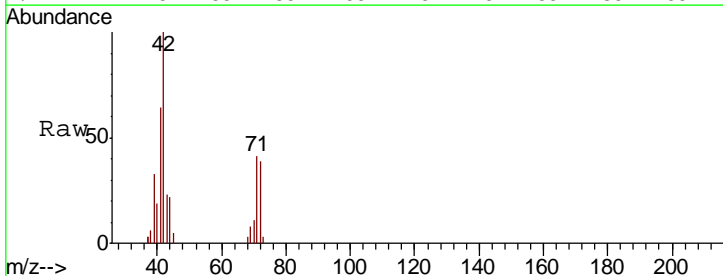
Instrument :
 MSVOA_N
ClientSampled :
 N28424

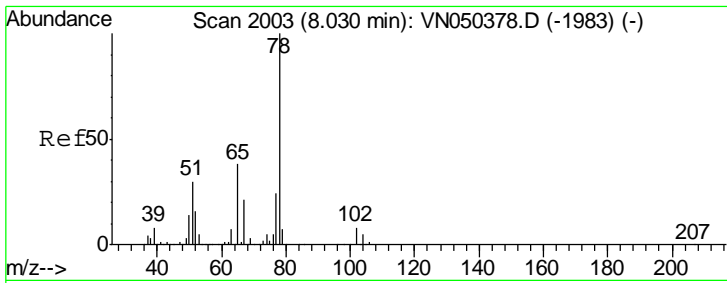
Tgt Ion	Resp	Lower	Upper
76	10502		
78	7.1	7.3	10.9#



#29
 Tetrahydrofuran
 Concen: 9.32 ug/l
 RT: 7.22 min Scan# 1752
 Delta R.T. 0.01 min
 Lab File: VN050405.D
 Acq: 7 Aug 2018 00:58

Tgt Ion	Resp	Lower	Upper
42	21837		
72	18.7	35.9	53.9#
71	40.9	33.7	50.5

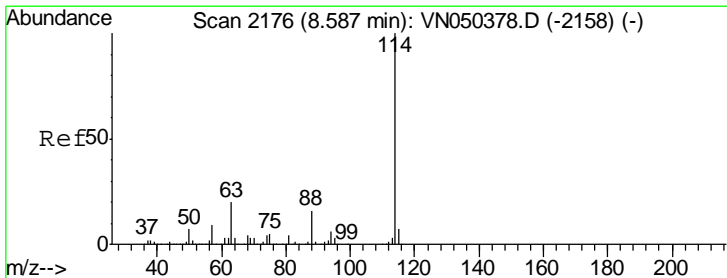
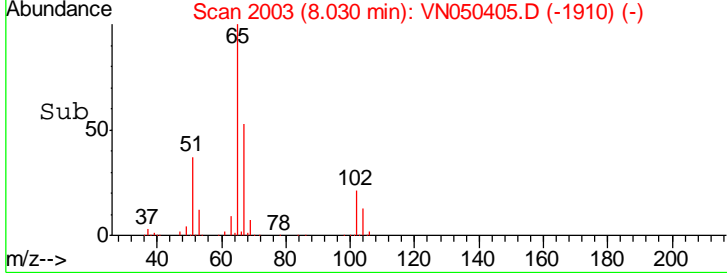
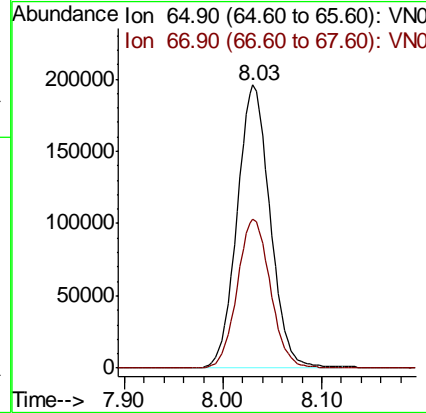
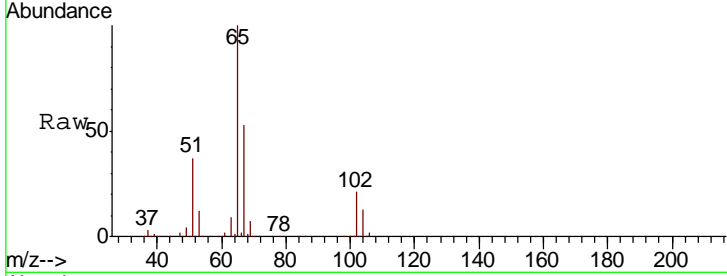




#33
 1,2-Dichloroethane-d4
 Concen: 51.45 ug/l
 RT: 8.03 min Scan# 2003
 Delta R.T. 0.00 min
 Lab File: VN050405.D
 Acq: 7 Aug 2018 00:58

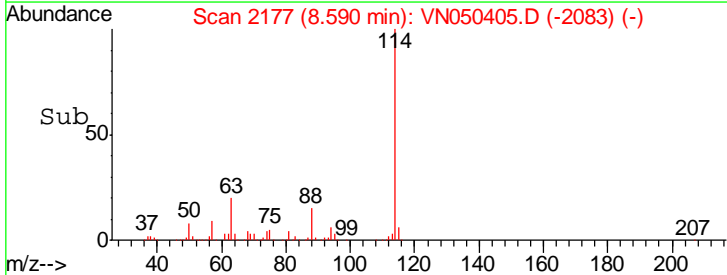
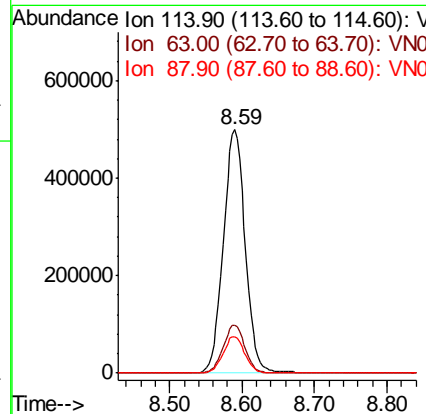
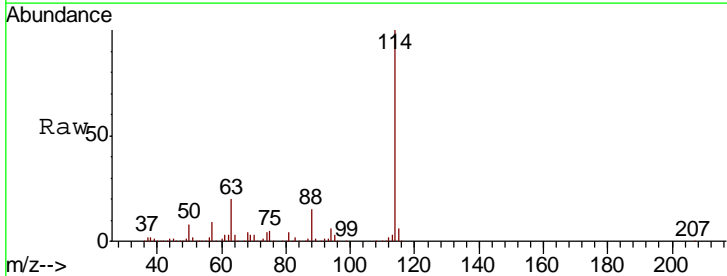
Instrument :
 MSVOA_N
ClientSampled :
 N28424

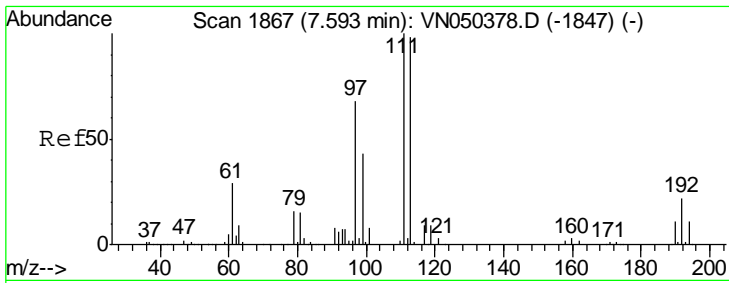
Tgt Ion	Resp	Lower	Upper
65	100		
67	53.0	0.0	108.4



#34
 1,4-Difluorobenzene
 Concen: 50.00 ug/l
 RT: 8.59 min Scan# 2177
 Delta R.T. 0.00 min
 Lab File: VN050405.D
 Acq: 7 Aug 2018 00:58

Tgt Ion	Resp	Lower	Upper
114	100		
63	19.8	0.0	40.0
88	15.0	0.0	31.2

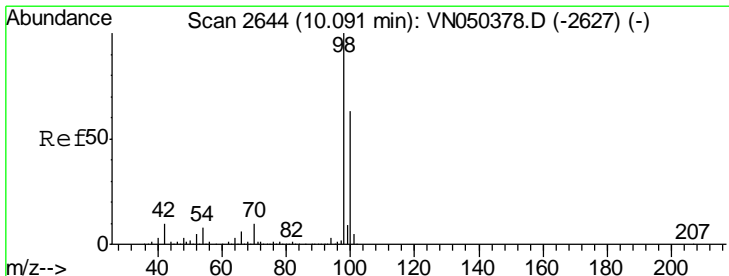
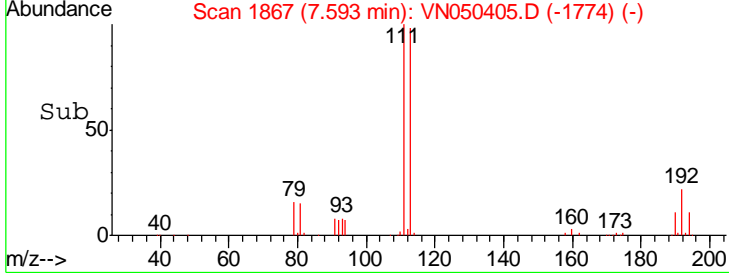
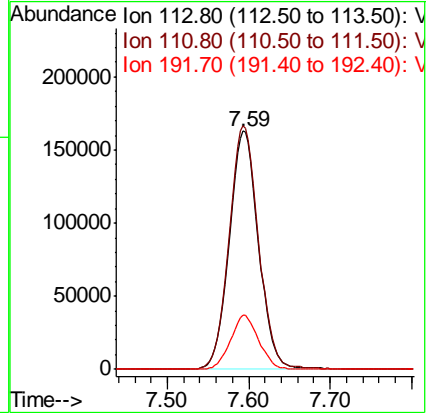
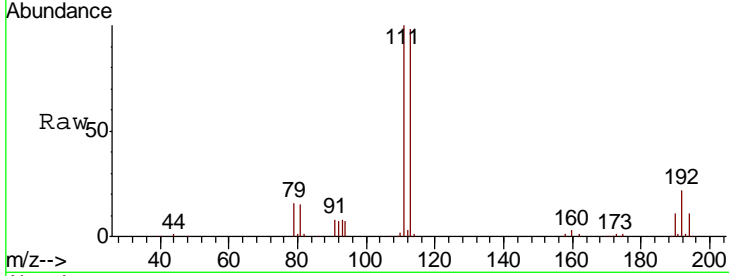




#35
 Dibromofluoromethane
 Concen: 48.86 ug/l
 RT: 7.59 min Scan# 1867
 Delta R.T. 0.00 min
 Lab File: VN050405.D
 Acq: 7 Aug 2018 00:58

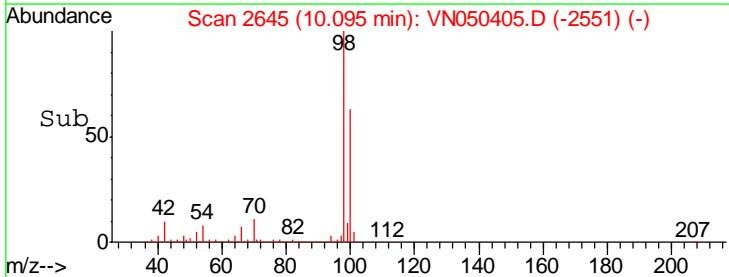
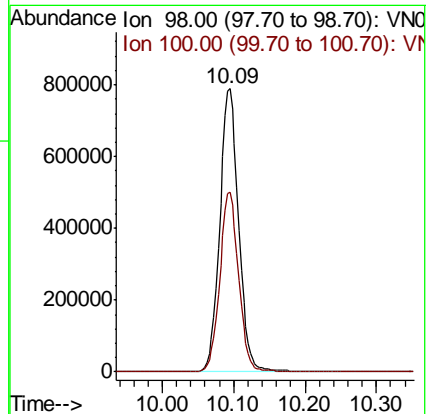
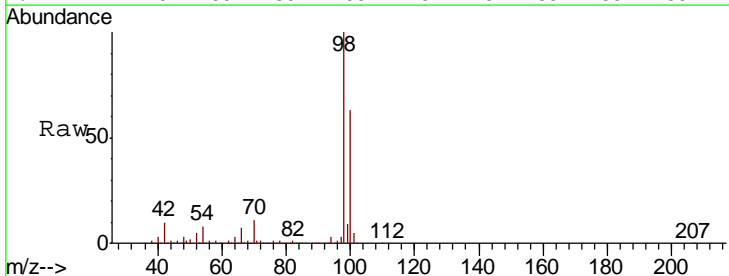
Instrument : MSVOA_N
 ClientSampled : N28424

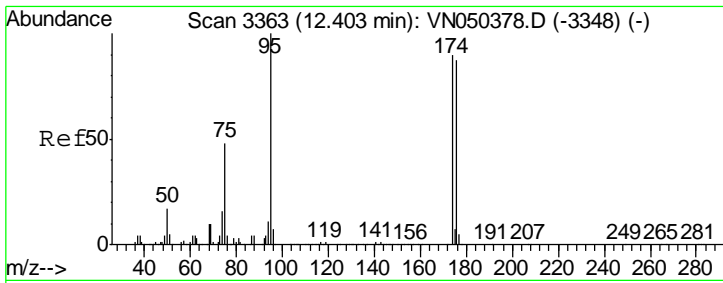
Tgt Ion	Resp	Lower	Upper
113	409235		
111	102.8	80.7	121.1
192	21.9	17.8	26.6



#50
 Toluene-d8
 Concen: 45.77 ug/l
 RT: 10.09 min Scan# 2645
 Delta R.T. 0.00 min
 Lab File: VN050405.D
 Acq: 7 Aug 2018 00:58

Tgt Ion	Resp	Lower	Upper
98	1441368		
100	63.1	50.7	76.1

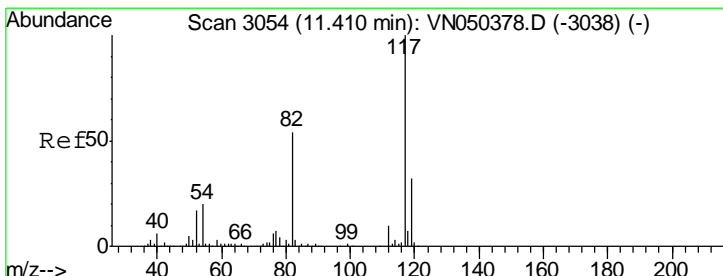
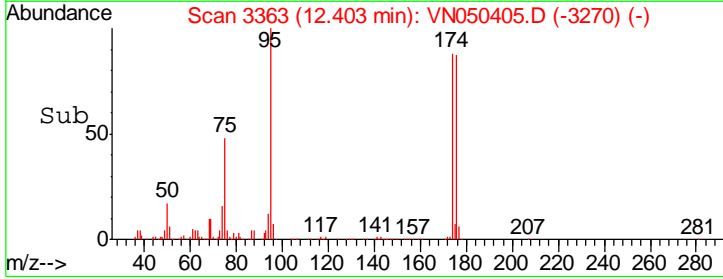
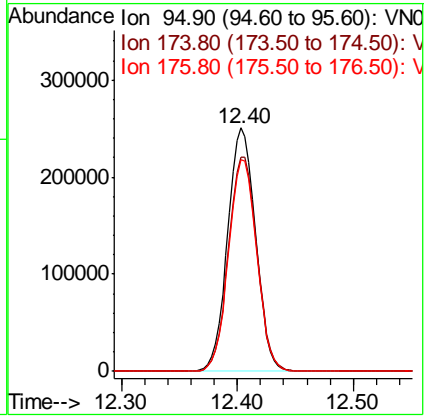
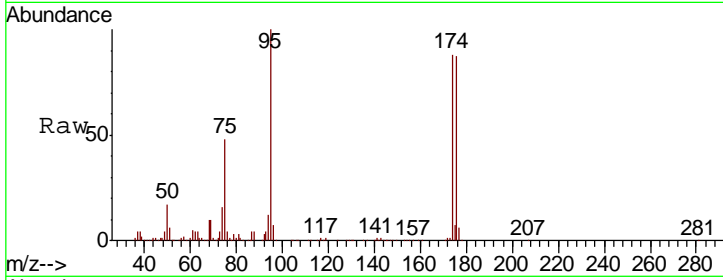




#62
 4-Bromofluorobenzene
 Concen: 38.90 ug/l
 RT: 12.40 min Scan# 3363
 Delta R.T. 0.00 min
 Lab File: VN050405.D
 Acq: 7 Aug 2018 00:58

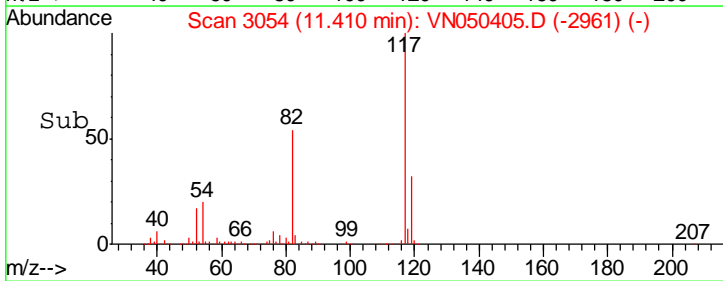
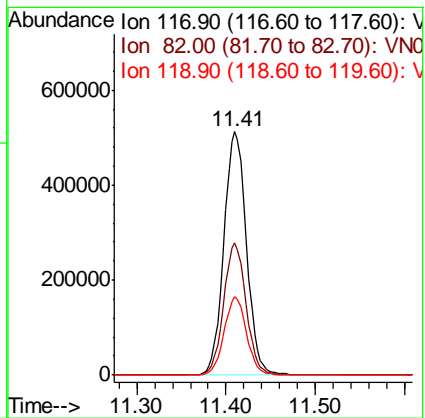
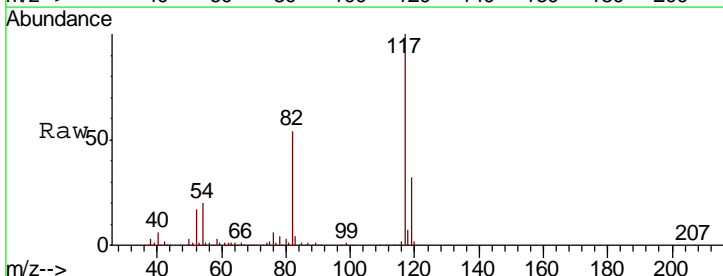
Instrument : MSVOA_N
 ClientSampled : N28424

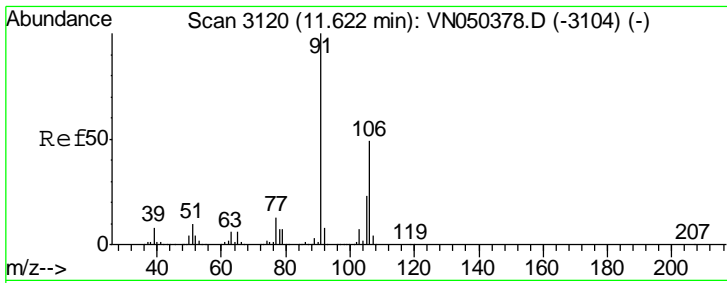
Tgt Ion	Resp	Lower	Upper
95	417578		
174	90.3	0.0	178.2
176	87.6	0.0	173.4



#63
 Chlorobenzene-d5
 Concen: 50.00 ug/l
 RT: 11.41 min Scan# 3054
 Delta R.T. 0.00 min
 Lab File: VN050405.D
 Acq: 7 Aug 2018 00:58

Tgt Ion	Resp	Lower	Upper
117	896170		
82	54.2	43.7	65.5
119	32.2	26.1	39.1

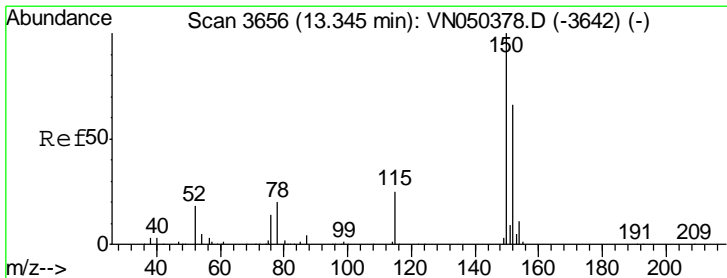
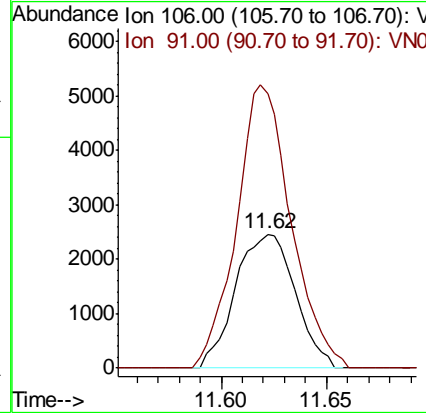
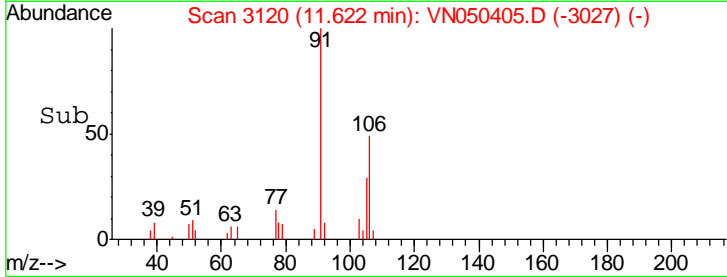
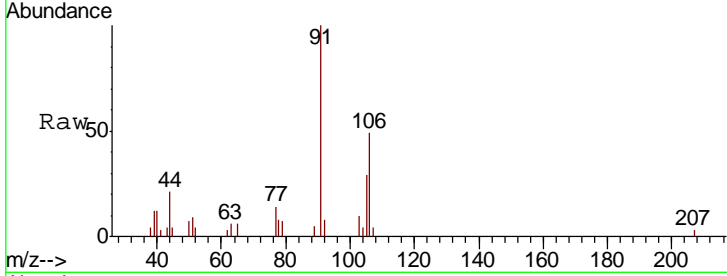




#68
 m/p-Xylenes
 Concen: 0.35 ug/l
 RT: 11.62 min Scan# 3120
 Delta R.T. 0.00 min
 Lab File: VN050405.D
 Acq: 7 Aug 2018 00:58

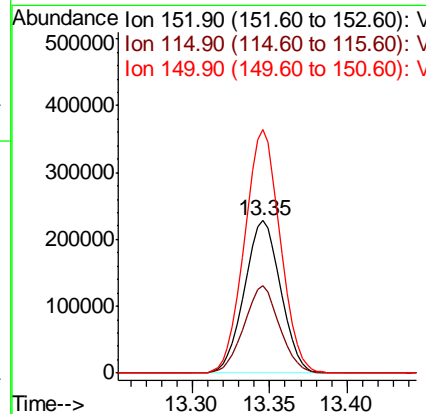
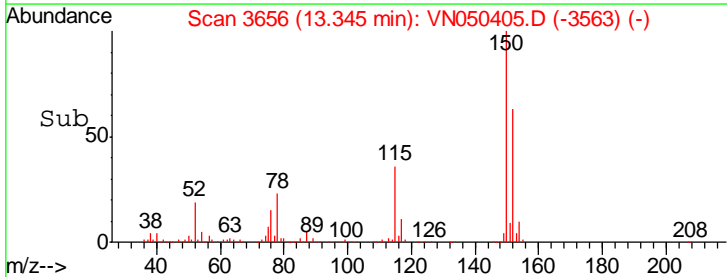
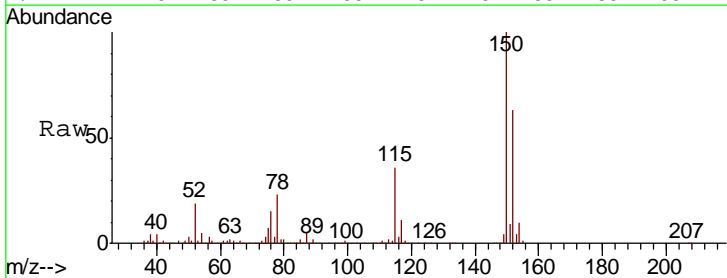
Instrument :
 MSVOA_N
 ClientSampled :
 N28424

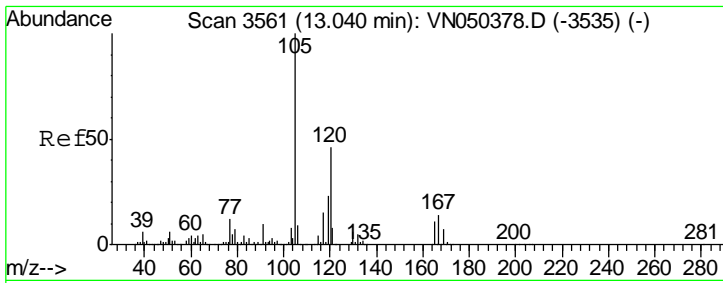
Tgt Ion: 106 Resp: 4839
 Ion Ratio Lower Upper
 106 100
 91 193.4 162.2 243.2



#72
 1,4-Dichlorobenzene-d4
 Concen: 50.00 ug/l
 RT: 13.35 min Scan# 3656
 Delta R.T. 0.00 min
 Lab File: VN050405.D
 Acq: 7 Aug 2018 00:58

Tgt Ion: 152 Resp: 373431
 Ion Ratio Lower Upper
 152 100
 115 55.7 27.8 83.3
 150 156.8 0.0 348.6

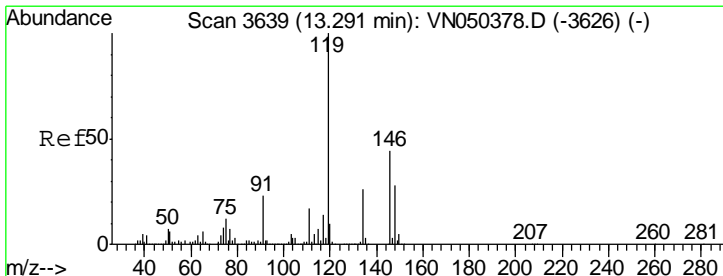
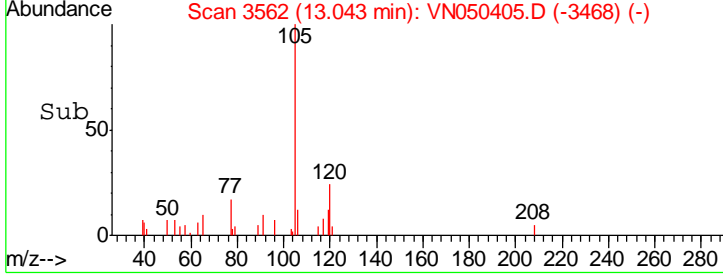
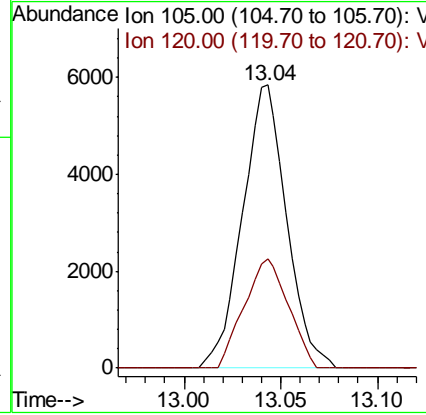
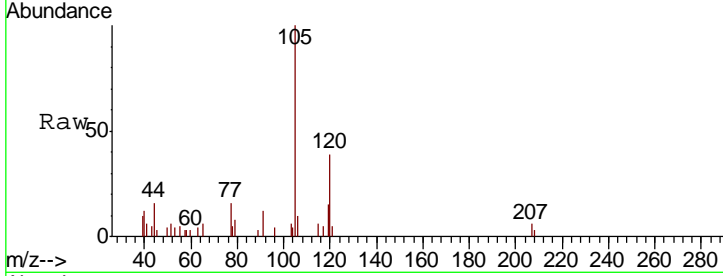




#84
 1,2,4-Trimethylbenzene
 Concen: 0.40 ug/l
 RT: 13.04 min Scan# 3562
 Delta R.T. 0.00 min
 Lab File: VN050405.D
 Acq: 7 Aug 2018 00:58

Instrument : MSVOA_N
 ClientSampled : N28424

Tgt Ion	Resp	Ion Ratio	Lower	Upper
105	9295	100		
120		38.6	22.9	68.7



#86
 p-Isopropyltoluene
 Concen: 0.65 ug/l
 RT: 13.29 min Scan# 3639
 Delta R.T. 0.00 min
 Lab File: VN050405.D
 Acq: 7 Aug 2018 00:58

Tgt Ion	Resp	Ion Ratio	Lower	Upper
119	14664	100		
134		27.9	13.3	39.8
91		22.5	11.4	34.2

