

Data Path : Z:\VOASRV\HPCHEM1\MSVOA N\DATA\VN080618\
 Data File : VN050406.D
 Acq On : 7 Aug 2018 1:23
 Operator : MD\SY
 Sample : J4316-09
 Misc : 5.00mL/MSVOA N/WATER
 ALS Vial : 35 Sample Multiplier: 1

Instrument :
 MSVOA_N
ClientSampleId :
 OW-2-4

Manual Integrations
APPROVED
 MMDadoda
 8/7/2018 10:46:54 AM

Quant Time: Aug 07 09:47:39 2018
 Quant Method : Z:\VOASRV\HPCHEM1\MSVOA_N\METHODS\82N080618W.M
 Quant Title : SW846 8260
 QLast Update : Tue Aug 07 05:22:15 2018
 Response via : Initial Calibration

Internal Standards	R.T.	QIon	Response	Conc	Units	Dev(Min)
1) Pentafluorobenzene	7.67	168	645477	50.00	ug/l	0.00
34) 1,4-Difluorobenzene	8.59	114	1031912	50.00	ug/l	0.00
63) Chlorobenzene-d5	11.41	117	865649	50.00	ug/l	0.00
72) 1,4-Dichlorobenzene-d4	13.35	152	334531	50.00	ug/l	0.00
System Monitoring Compounds						
33) 1,2-Dichloroethane-d4	8.03	65	453690	52.61	ug/l	0.00
Spiked Amount				50.000		
			Recovery	=	105.22%	
35) Dibromofluoromethane	7.59	113	400831	48.41	ug/l	0.00
Spiked Amount				50.000		
			Recovery	=	96.82%	
50) Toluene-d8	10.09	98	1423574	45.73	ug/l	0.00
Spiked Amount				50.000		
			Recovery	=	91.46%	
62) 4-Bromofluorobenzene	12.40	95	389965	36.75	ug/l	0.00
Spiked Amount				50.000		
			Recovery	=	73.50%	
Target Compounds						
						Qvalue
16) Acetone	3.82	43	24940	9.35	ug/l	99
52) Toluene	10.16	92	14128	0.67	ug/l	97
84) 1,2,4-Trimethylbenzene	13.04	105	5850	0.28	ug/l	99
86) p-Isopropyltoluene	13.29	119	82340	4.05	ug/l	98

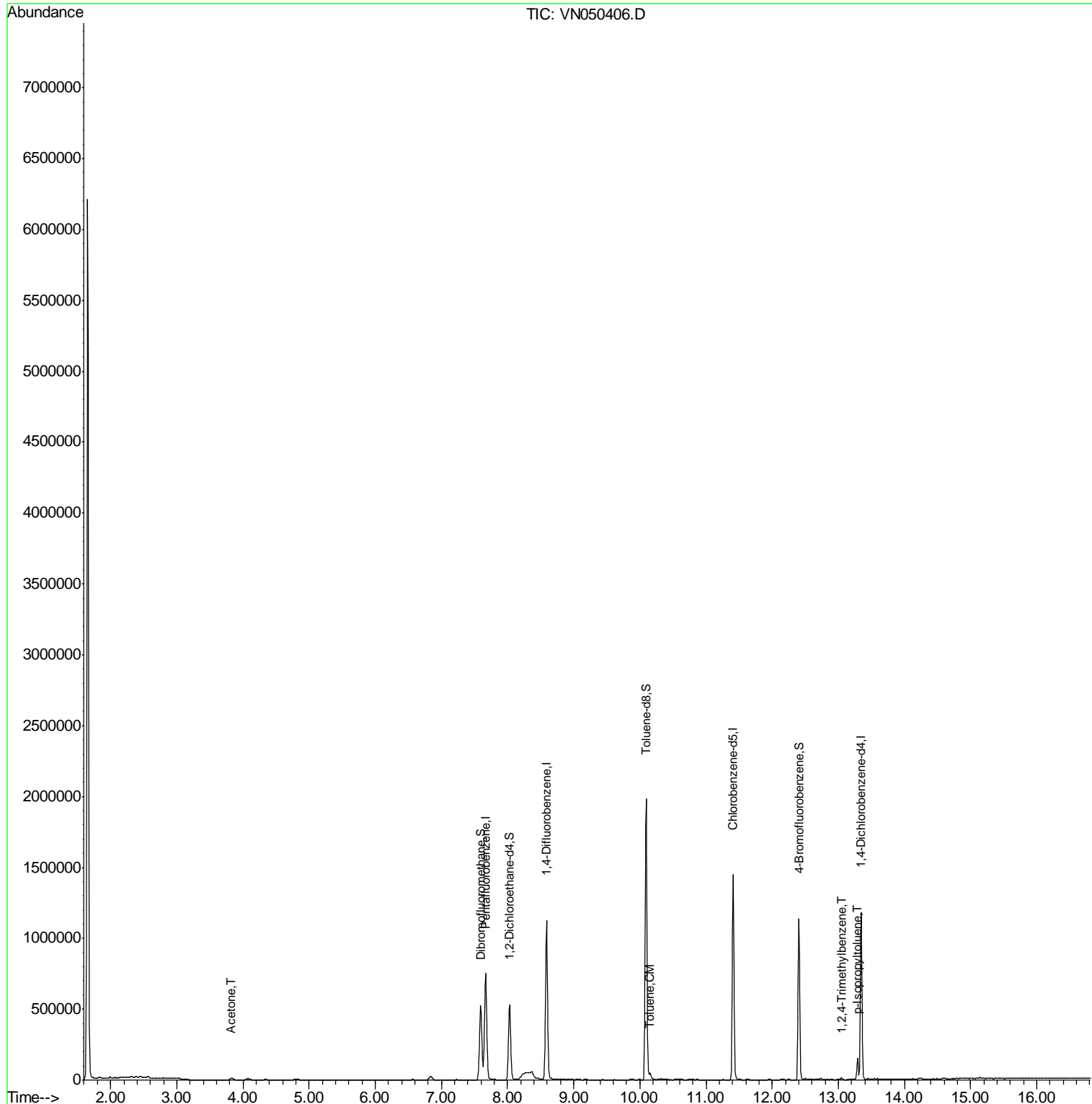
(#) = qualifier out of range (m) = manual integration (+) = signals summed

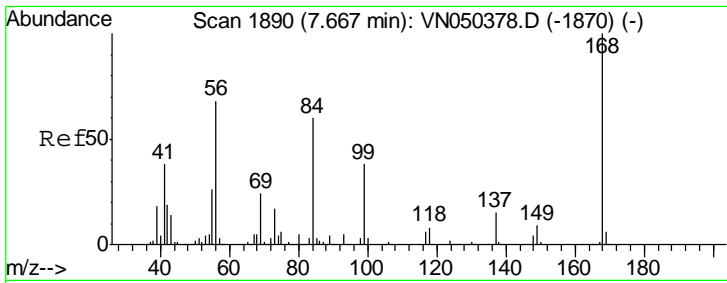
Data Path : Z:\VOASRV\HPCHEM1\MSVOA N\DATA\VN080618\
 Data File : VN050406.D
 Acq On : 7 Aug 2018 1:23
 Operator : MD\SY
 Sample : J4316-09
 Misc : 5.00mL/MSVOA N/WATER
 ALS Vial : 35 Sample Multiplier: 1

Instrument :
 MSVOA_N
Client Sampled :
 OW-2-4

Manual Integrations
APPROVED
 MMDadoda
 8/7/2018 10:46:54 AM

Quant Time: Aug 07 09:47:39 2018
 Quant Method : Z:\VOASRV\HPCHEM1\MSVOA_N\METHODS\82N080618W.M
 Quant Title : SW846 8260
 QLast Update : Tue Aug 07 05:22:15 2018
 Response via : Initial Calibration





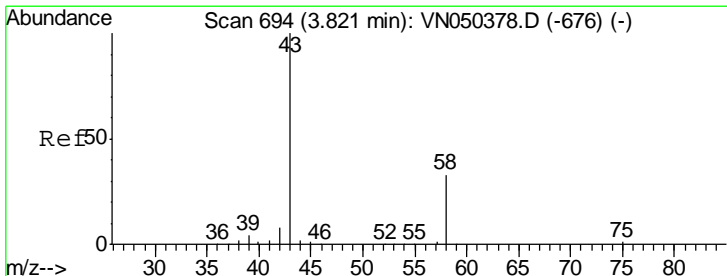
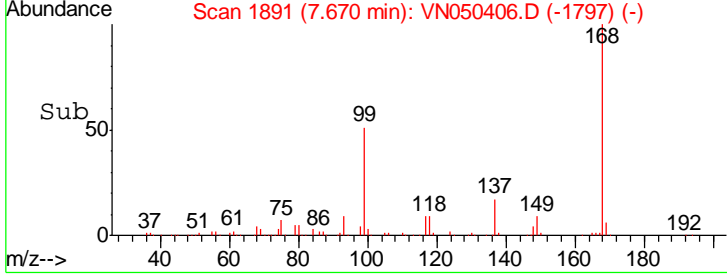
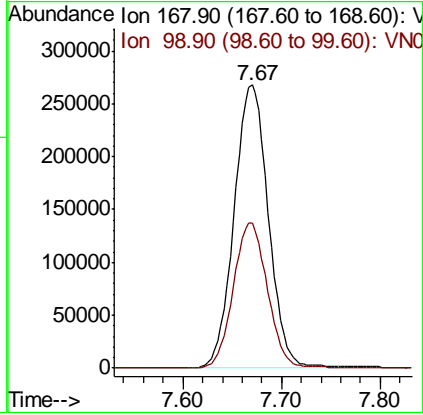
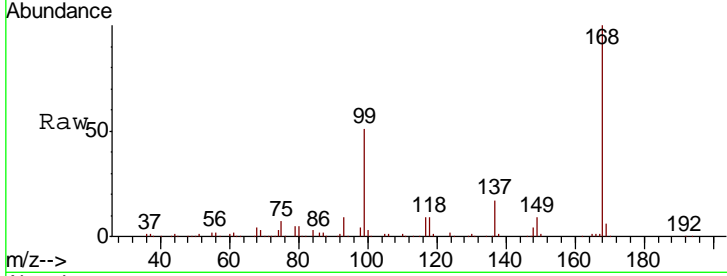
#1
 Pentafluorobenzene
 Concen: 50.00 ug/l
 RT: 7.67 min Scan# 1891
 Delta R.T. 0.00 min
 Lab File: VN050406.D
 Acq: 7 Aug 2018 1:23

Instrument : MSVOA_N
 ClientSampled : OW-2-4

Tgt Ion	Resp	Lower	Upper
168	100		
99	51.1	40.0	60.0

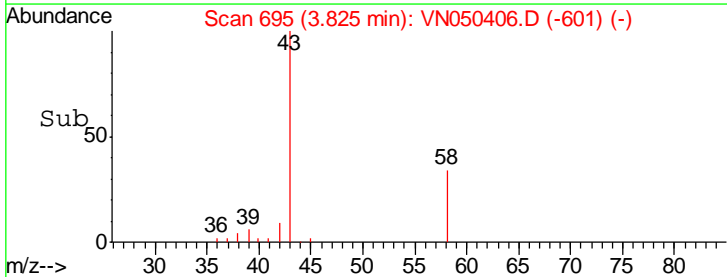
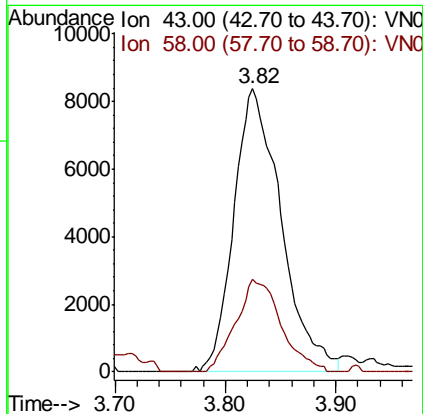
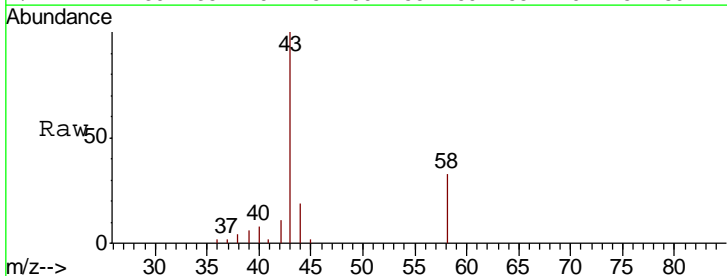
Manual Integrations
 APPROVED

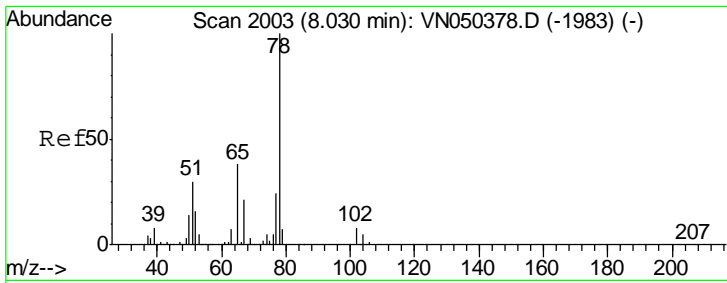
MMDadoda
 8/7/2018 10:46:54 AM



#16
 Acetone
 Concen: 9.35 ug/l
 RT: 3.82 min Scan# 695
 Delta R.T. 0.00 min
 Lab File: VN050406.D
 Acq: 7 Aug 2018 1:23

Tgt Ion	Resp	Lower	Upper
43	100		
58	32.7	25.8	38.8



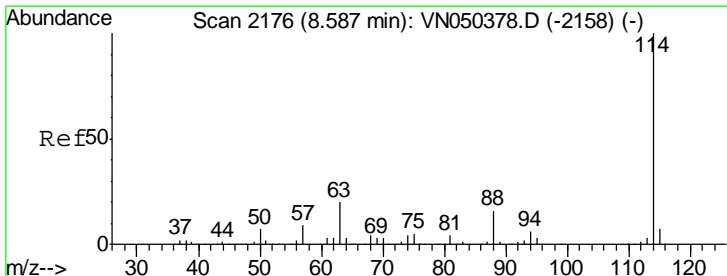
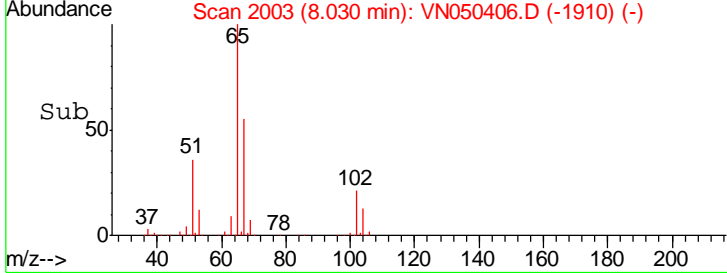
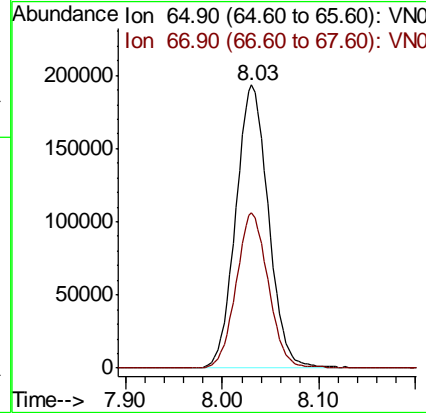
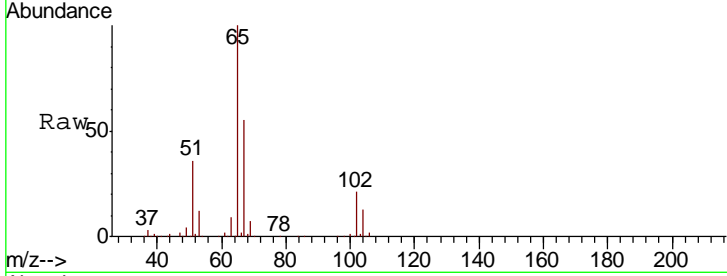


#33
 1,2-Dichloroethane-d4
 Concen: 52.61 ug/l
 RT: 8.03 min Scan# 2003
 Delta R.T. 0.00 min
 Lab File: VN050406.D
 Acq: 7 Aug 2018 1:23

Instrument :
 MSVOA_N
ClientSampled :
 OW-2-4

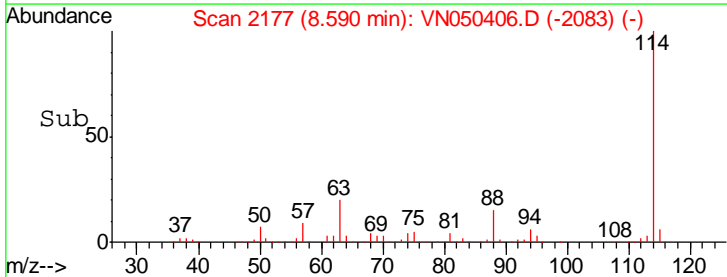
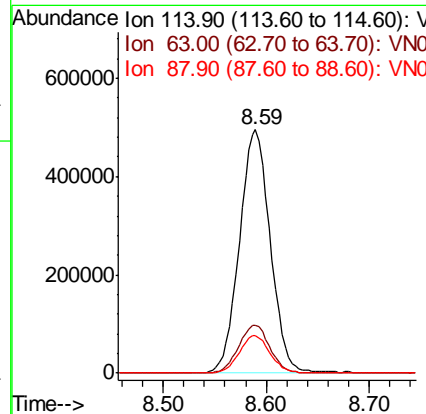
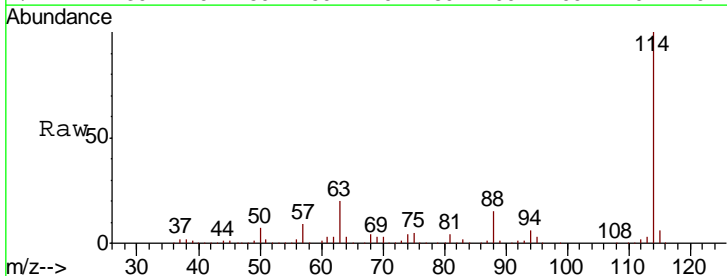
Tgt Ion: 65 Resp: 453690
 Ion Ratio Lower Upper
 65 100
 67 54.2 0.0 108.4

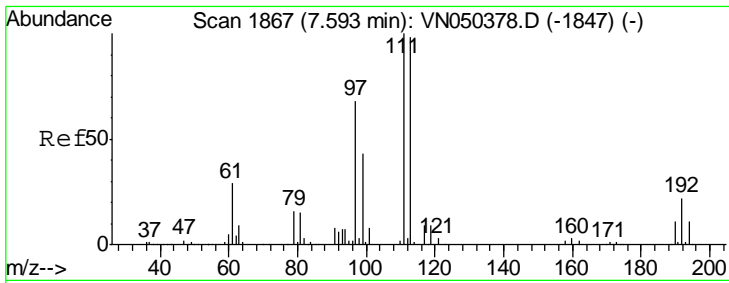
Manual Integrations
APPROVED
 MMDadoda
 8/7/2018 10:46:54 AM



#34
 1,4-Difluorobenzene
 Concen: 50.00 ug/l
 RT: 8.59 min Scan# 2177
 Delta R.T. 0.00 min
 Lab File: VN050406.D
 Acq: 7 Aug 2018 1:23

Tgt Ion: 114 Resp: 1031912
 Ion Ratio Lower Upper
 114 100
 63 19.7 0.0 40.0
 88 15.2 0.0 31.2





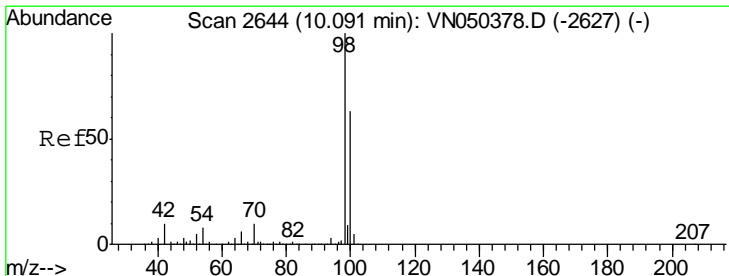
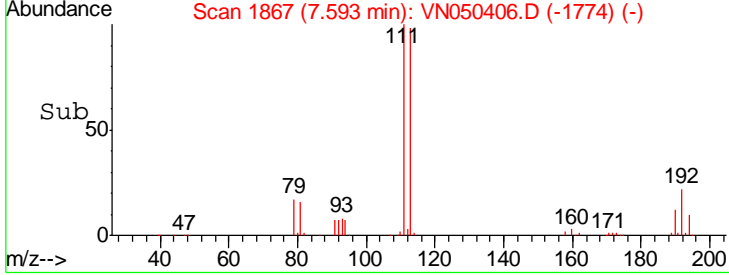
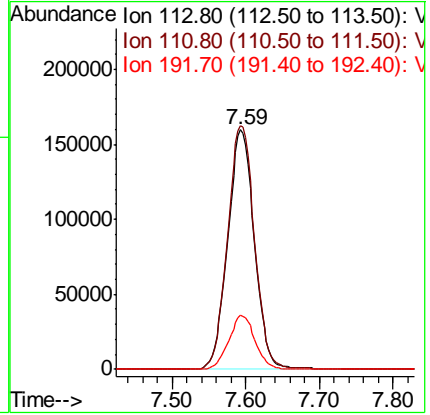
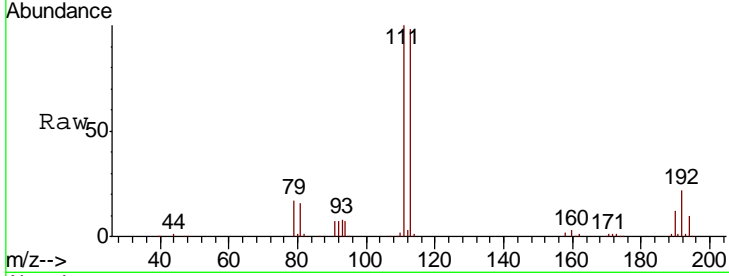
#35
 Dibromofluoromethane
 Concen: 48.41 ug/l
 RT: 7.59 min Scan# 1867
 Delta R.T. 0.00 min
 Lab File: VN050406.D
 Acq: 7 Aug 2018 1:23

Instrument : MSVOA_N
 ClientSampled : OW-2-4

Tgt Ion	Resp	Lower	Upper
113	100		
111	103.1	80.7	121.1
192	22.3	17.8	26.6

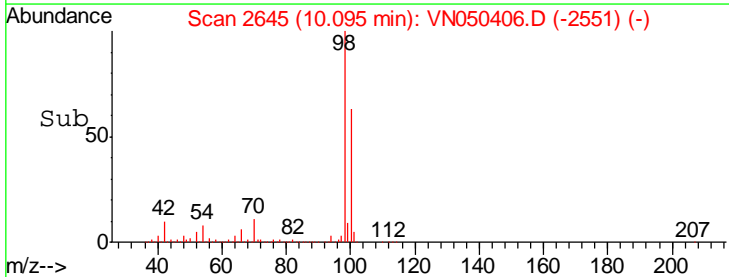
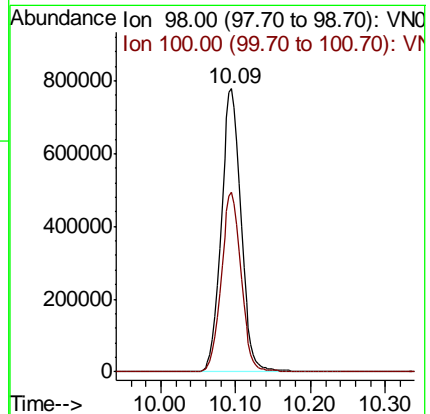
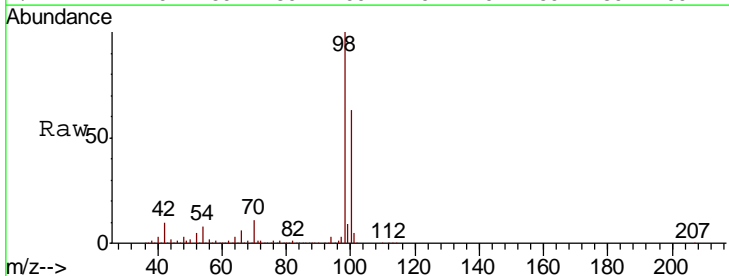
Manual Integrations
 APPROVED

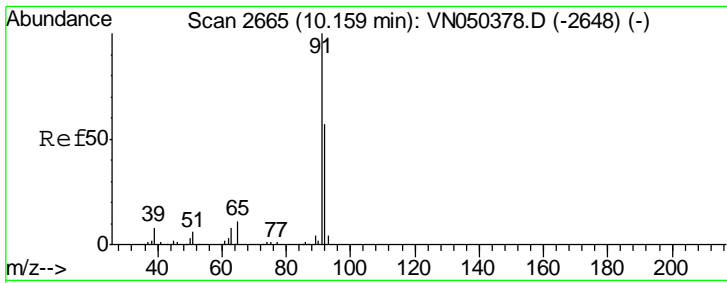
MMDadoda
 8/7/2018 10:46:54 AM



#50
 Toluene-d8
 Concen: 45.73 ug/l
 RT: 10.09 min Scan# 2645
 Delta R.T. 0.00 min
 Lab File: VN050406.D
 Acq: 7 Aug 2018 1:23

Tgt Ion	Resp	Lower	Upper
98	100		
100	63.5	50.7	76.1



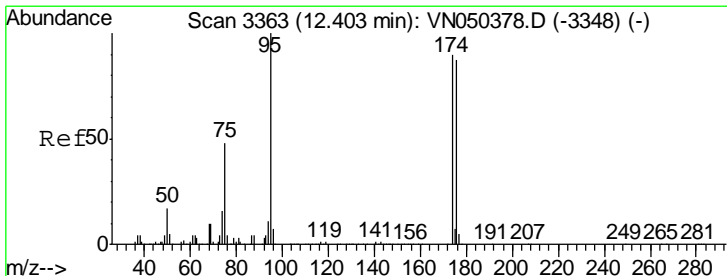
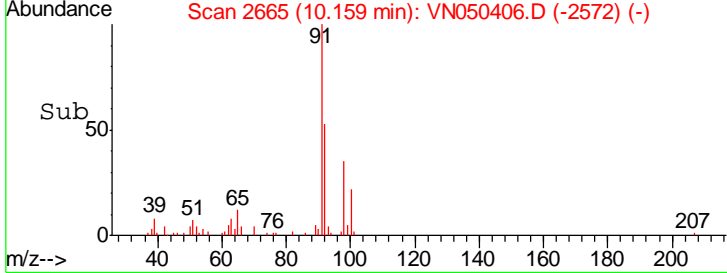
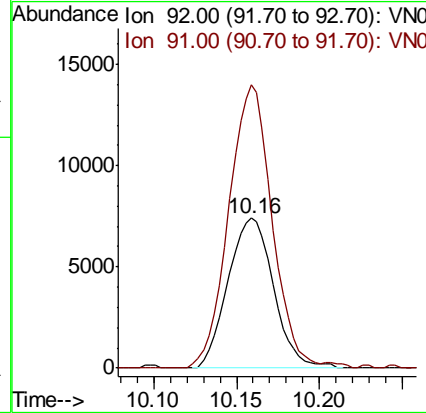
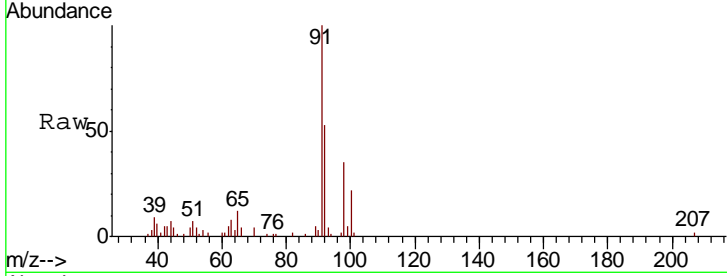


#52
 Toluene
 Concen: 0.67 ug/l
 RT: 10.16 min Scan# 2665
 Delta R.T. 0.00 min
 Lab File: VN050406.D
 Acq: 7 Aug 2018 1:23

Instrument : MSVOA_N
 ClientSampled : OW-2-4

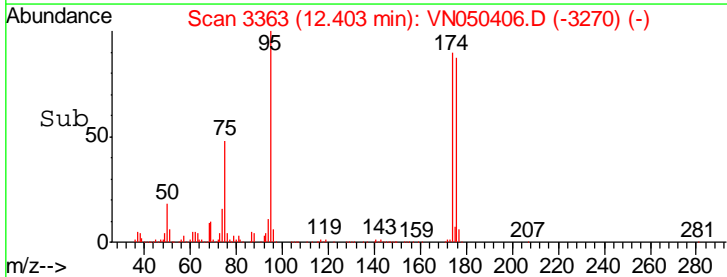
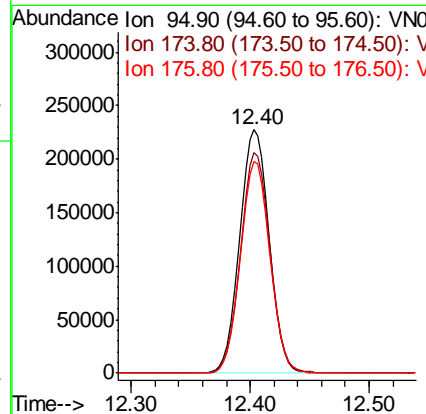
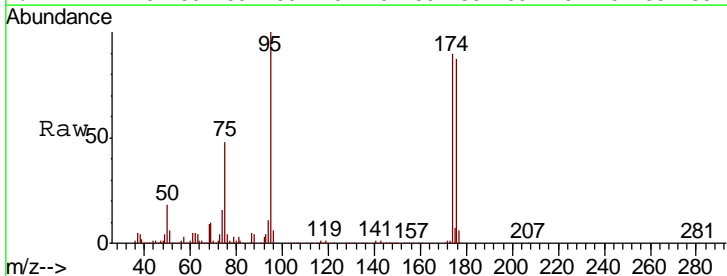
Tgt Ion	Resp	Lower	Upper
92	14128		
92	100		
91	178.9	140.3	210.5

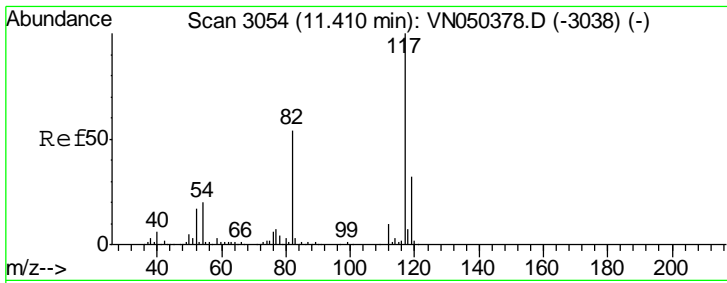
Manual Integrations
APPROVED
 MMDadoda
 8/7/2018 10:46:54 AM



#62
 4-Bromofluorobenzene
 Concen: 36.75 ug/l
 RT: 12.40 min Scan# 3363
 Delta R.T. 0.00 min
 Lab File: VN050406.D
 Acq: 7 Aug 2018 1:23

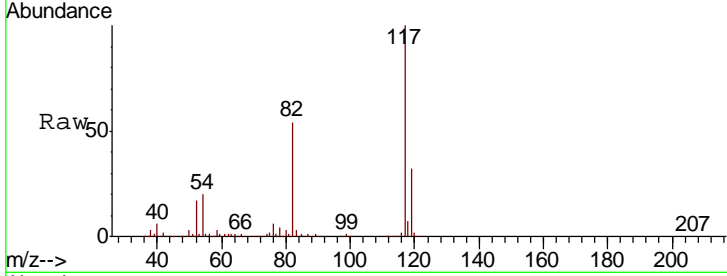
Tgt Ion	Resp	Lower	Upper
95	389965		
95	100		
174	91.0	0.0	178.2
176	86.8	0.0	173.4





#63
 Chlorobenzene-d5
 Concen: 50.00 ug/l
 RT: 11.41 min Scan# 3054
 Delta R.T. 0.00 min
 Lab File: VN050406.D
 Acq: 7 Aug 2018 1:23

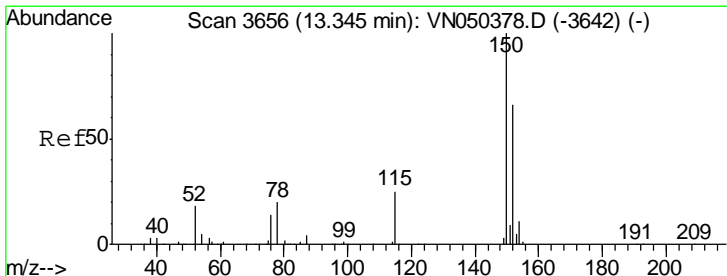
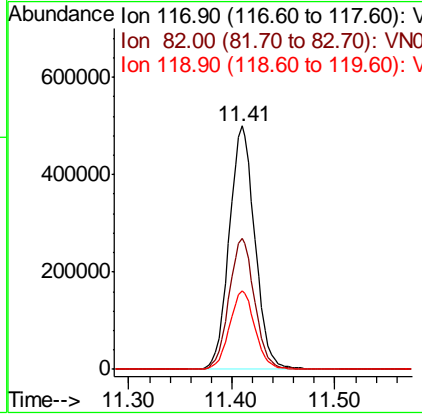
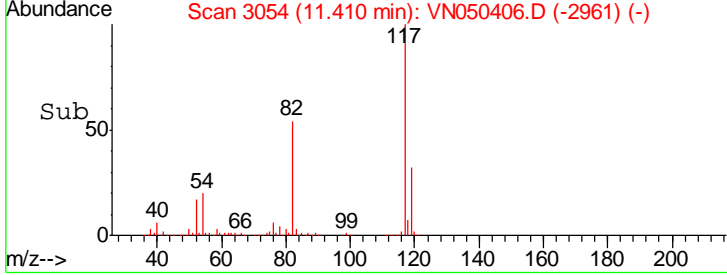
Instrument : MSVOA_N
 ClientSampled : OW-2-4



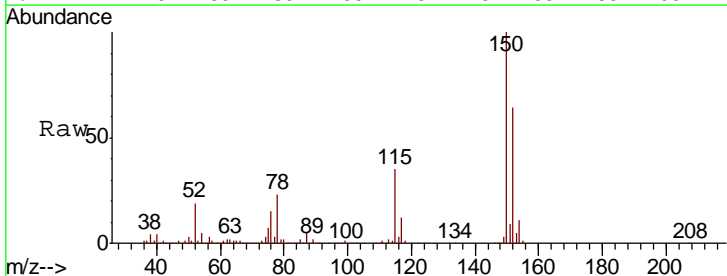
Tgt Ion: 117 Resp: 865649

Ion	Ratio	Lower	Upper
117	100		
82	54.0	43.7	65.5
119	32.2	26.1	39.1

Manual Integrations APPROVED
 MMDadoda
 8/7/2018 10:46:54 AM

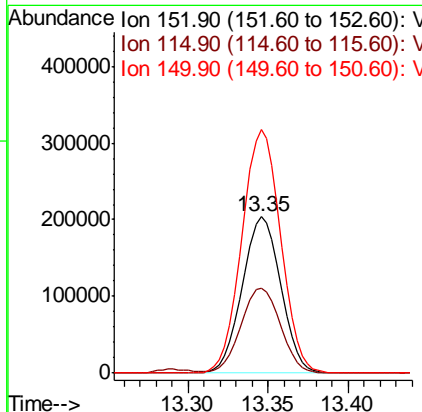
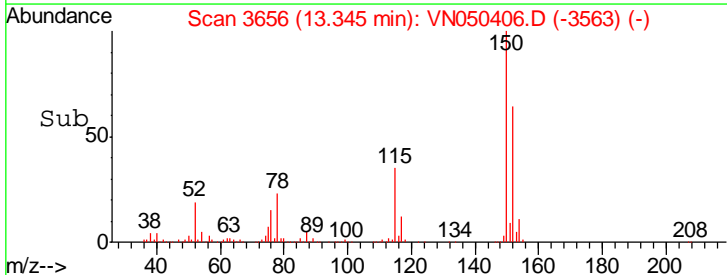


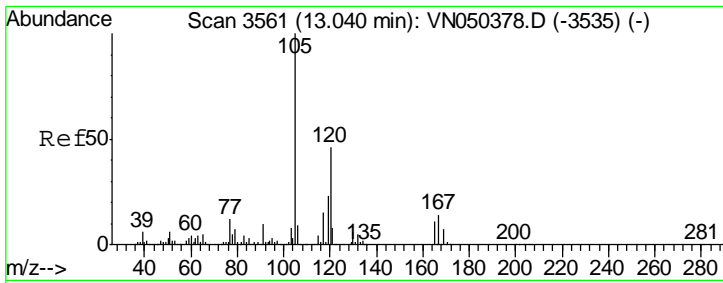
#72
 1,4-Dichlorobenzene-d4
 Concen: 50.00 ug/l
 RT: 13.35 min Scan# 3656
 Delta R.T. 0.00 min
 Lab File: VN050406.D
 Acq: 7 Aug 2018 1:23



Tgt Ion: 152 Resp: 334531

Ion	Ratio	Lower	Upper
152	100		
115	55.8	27.8	83.3
150	156.7	0.0	348.6



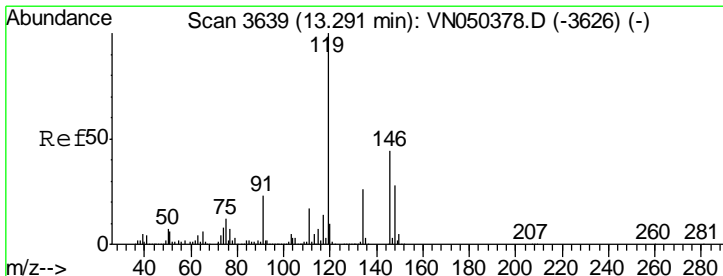
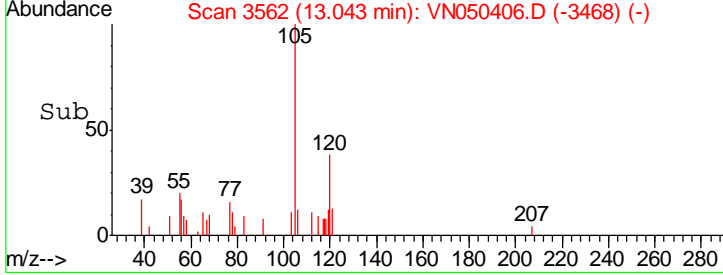
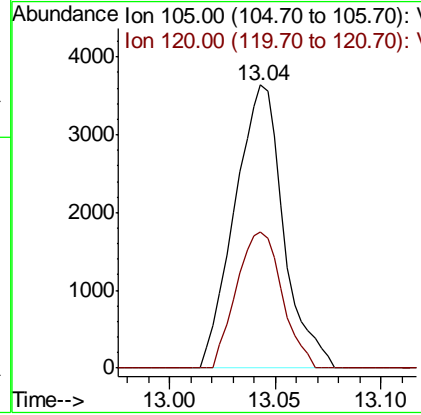
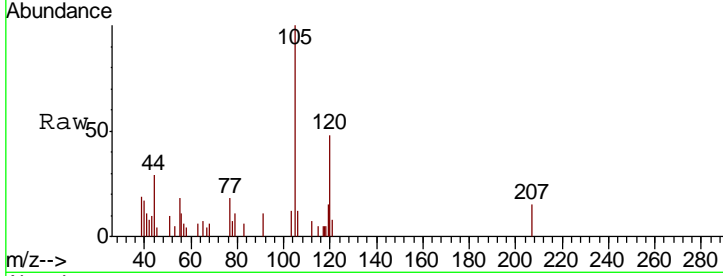


#84
 1,2,4-Trimethylbenzene
 Concen: 0.28 ug/l
 RT: 13.04 min Scan# 3562
 Delta R.T. 0.00 min
 Lab File: VN050406.D
 Acq: 7 Aug 2018 1:23

Instrument : MSVOA_N
 ClientSampled : OW-2-4

Tgt Ion	Resp	Lower	Upper
105	100		
120	45.0	22.9	68.7

Manual Integrations
APPROVED
 MMDadoda
 8/7/2018 10:46:54 AM



#86
 p-Isopropyltoluene
 Concen: 4.05 ug/l
 RT: 13.29 min Scan# 3639
 Delta R.T. 0.00 min
 Lab File: VN050406.D
 Acq: 7 Aug 2018 1:23

Tgt Ion	Resp	Lower	Upper
119	100		
134	26.2	13.3	39.8
91	24.8	11.4	34.2

