

Data Path : Z:\VOASRV\HPCHEM1\MSVOA N\DATA\VN080718\
 Data File : VN050424.D
 Acq On : 7 Aug 2018 12:08
 Operator : MD\SY
 Sample : VN0807WBL01
 Misc : 5.00mL/MSVOA N/WATER
 ALS Vial : 3 Sample Multiplier: 1

Instrument :
 MSVOA_N
 ClientSampled :
 VN0807WBL01

Quant Time: Aug 08 05:20:31 2018
 Quant Method : Z:\VOASRV\HPCHEM1\MSVOA_N\METHODS\82N080618W.M
 Quant Title : SW846 8260
 QLast Update : Tue Aug 07 05:22:15 2018
 Response via : Initial Calibration

Internal Standards	R.T.	QIon	Response	Conc	Units	Dev(Min)
1) Pentafluorobenzene	7.67	168	692356	50.00	ug/l	0.00
34) 1,4-Difluorobenzene	8.59	114	1105011	50.00	ug/l	0.00
63) Chlorobenzene-d5	11.41	117	975392	50.00	ug/l	0.00
72) 1,4-Dichlorobenzene-d4	13.35	152	380946	50.00	ug/l	0.00

System Monitoring Compounds

33) 1,2-Dichloroethane-d4	8.03	65	480051	51.89	ug/l	0.00
Spiked Amount	50.000		Recovery	=	103.78%	
35) Dibromofluoromethane	7.59	113	432651	48.80	ug/l	0.00
Spiked Amount	50.000		Recovery	=	97.60%	
50) Toluene-d8	10.09	98	1556408	46.69	ug/l	0.00
Spiked Amount	50.000		Recovery	=	93.38%	
62) 4-Bromofluorobenzene	12.40	95	449171	39.53	ug/l	0.00
Spiked Amount	50.000		Recovery	=	79.06%	

Target Compounds

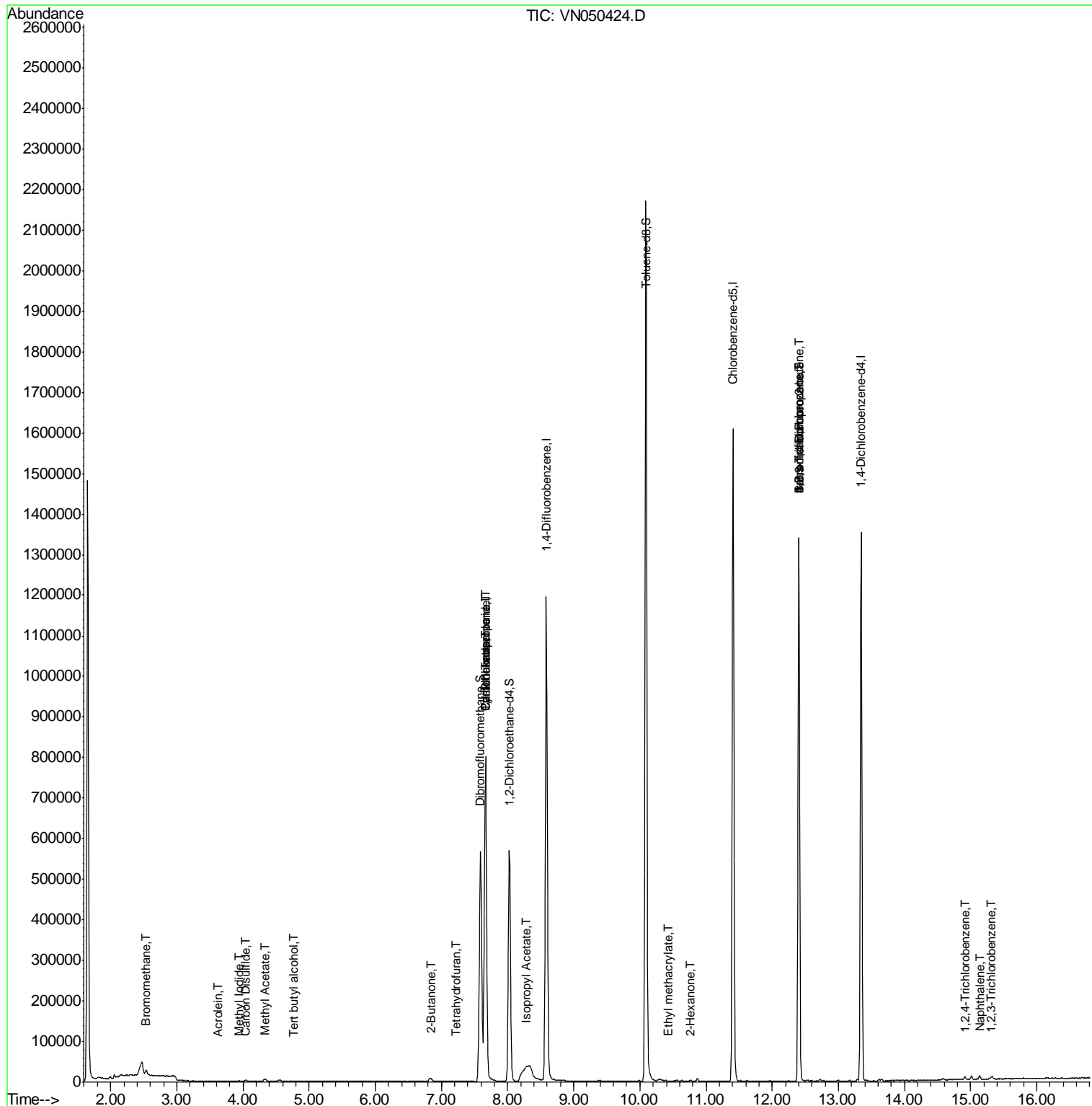
	R.T.	QIon	Response	Conc	Units	Qvalue
3) Chloromethane	2.06	50	6034	Below Cal		96
5) Bromomethane	2.54	94	7901	1.80	ug/l	91
10) Methyl Iodide	3.94	142	3036	0.87	ug/l #	64
11) Tert butyl alcohol	4.77	59	250	0.34	ug/l #	72
13) Acrolein	3.61	56	371	15.39	ug/l	89
16) Acetone	3.81	43	590	Below Cal		95
17) Carbon Disulfide	4.05	76	5617	0.23	ug/l	99
18) Methyl Acetate	4.33	43	11861	1.47	ug/l #	71
20) Methylene Chloride	4.55	84	3043	Below Cal	#	79
25) 2-Butanone	6.84	43	1056	0.23	ug/l	98
29) Tetrahydrofuran	7.22	42	904	0.37	ug/l #	72
31) Cyclohexane	7.66	56	12553	0.32	ug/l #	1
36) 1,1-Dichloropropene	7.67	75	49671	4.09	ug/l #	47
38) Carbon Tetrachloride	7.67	117	62301	4.92	ug/l #	16
43) Isopropyl Acetate	8.27	43	43045	2.85	ug/l #	62
56) Ethyl methacrylate	10.43	69	242	1.73	ug/l #	26
59) 2-Hexanone	10.76	43	2979	0.39	ug/l #	57
71) Bromoform	12.40	173	1985	0.31	ug/l #	1
76) 1,2,3-Trichloropropane	12.40	75	216276	31.36	ug/l #	100
81) trans-1,4-Dichloro-2-buten	12.40	75	216276	110.20	ug/l #	13
93) 1,2,4-Trichlorobenzene	14.91	180	2149	0.31	ug/l	87
94) Hexachlorobutadiene	15.01	225	1874	Below Cal		93
95) Naphthalene	15.14	128	6972	3.97	ug/l	97
96) 1,2,3-Trichlorobenzene	15.32	180	3097	0.44	ug/l	97

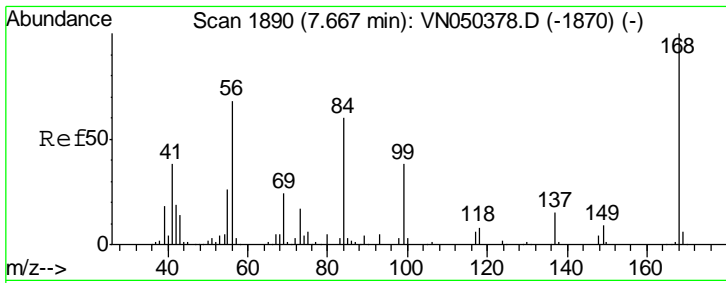
(#) = qualifier out of range (m) = manual integration (+) = signals summed

Data Path : Z:\VOASRV\HPCHEM1\MSVOA N\DATA\VN080718\
 Data File : VN050424.D
 Acq On : 7 Aug 2018 12:08
 Operator : MD\SY
 Sample : VN0807WBL01
 Misc : 5.00mL/MSVOA N/WATER
 ALS Vial : 3 Sample Multiplier: 1

Instrument :
 MSVOA_N
 Client Sampled :
 VN0807WBL01

Quant Time: Aug 08 05:20:31 2018
 Quant Method : Z:\VOASRV\HPCHEM1\MSVOA_N\METHODS\82N080618W.M
 Quant Title : SW846 8260
 QLast Update : Tue Aug 07 05:22:15 2018
 Response via : Initial Calibration

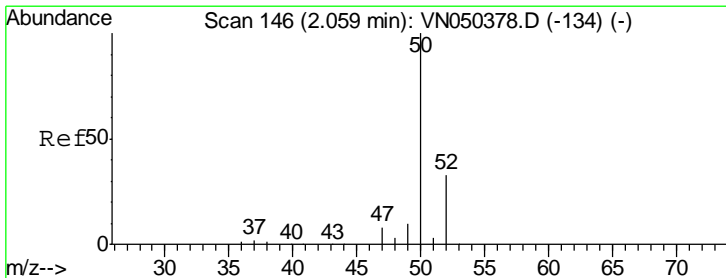
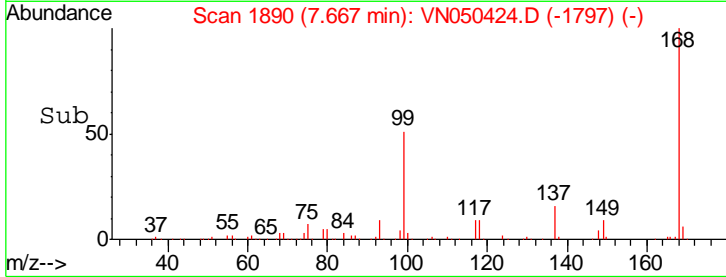
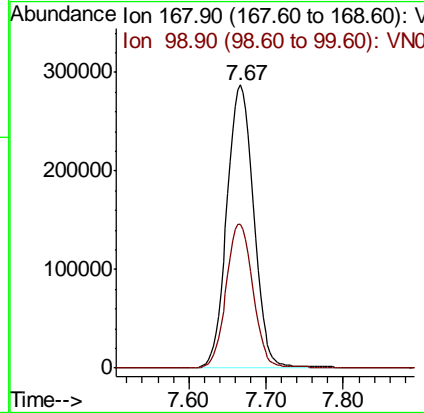
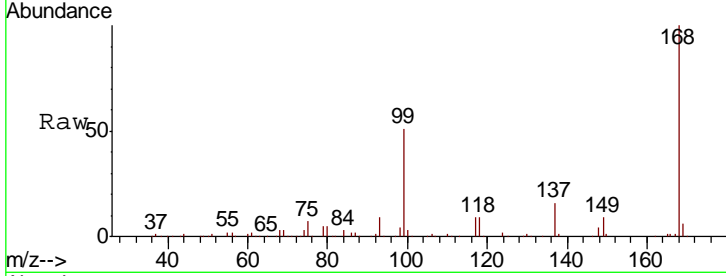




#1
 Pentafluorobenzene
 Concen: 50.00 ug/l
 RT: 7.67 min Scan# 1890
 Delta R.T. -0.00 min
 Lab File: VN050424.D
 Acq: 7 Aug 2018 12:08

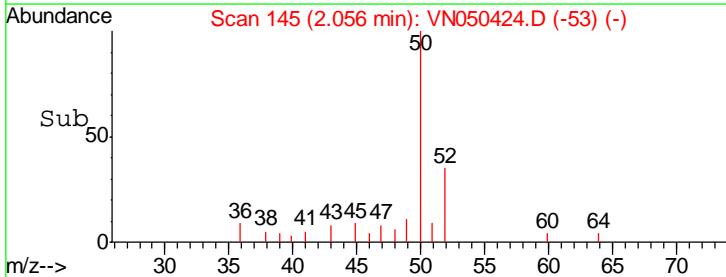
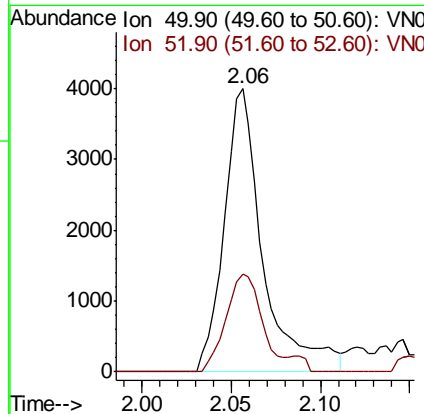
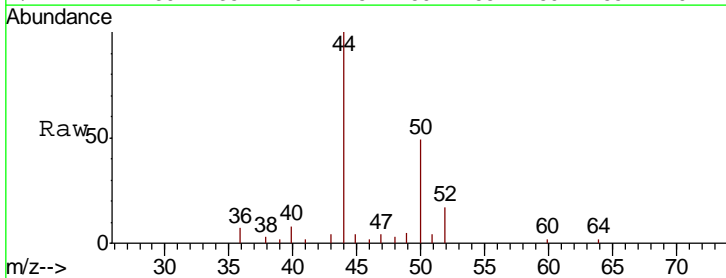
Instrument :
 MSVOA_N
 ClientSampled :
 VN0807WBL01

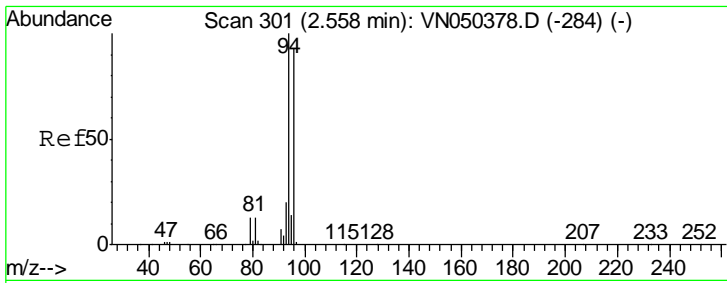
Tgt Ion: 168 Resp: 692356
 Ion Ratio Lower Upper
 168 100
 99 51.0 40.0 60.0



#3
 Chloromethane
 Concen: Below Cal
 RT: 2.06 min Scan# 145
 Delta R.T. -0.00 min
 Lab File: VN050424.D
 Acq: 7 Aug 2018 12:08

Tgt Ion: 50 Resp: 6034
 Ion Ratio Lower Upper
 50 100
 52 34.7 25.9 38.9

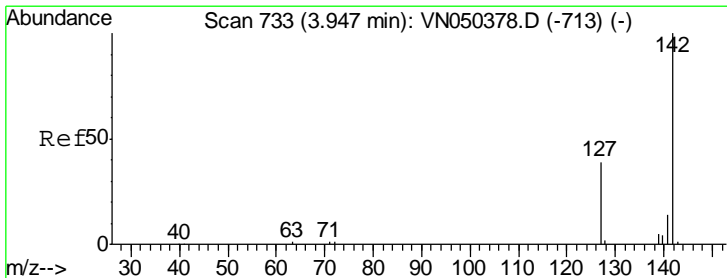
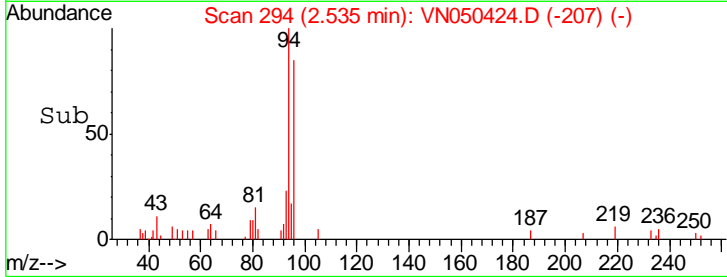
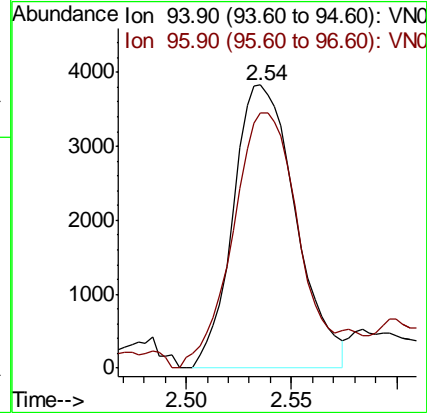
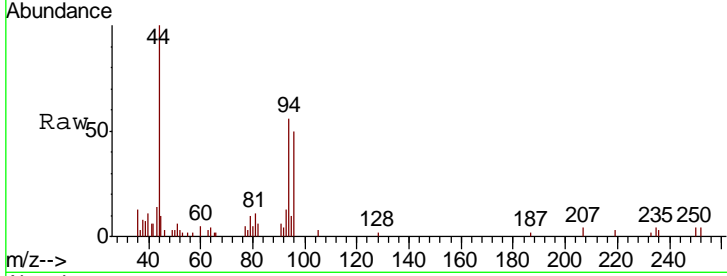




#5
 Bromomethane
 Concen: 1.80 ug/l
 RT: 2.54 min Scan# 294
 Delta R.T. -0.02 min
 Lab File: VN050424.D
 Acq: 7 Aug 2018 12:08

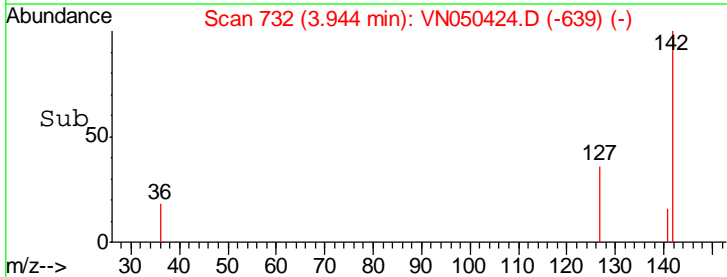
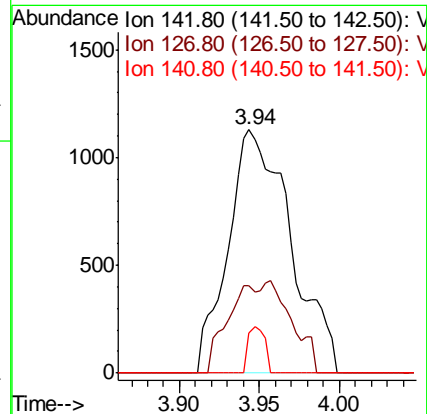
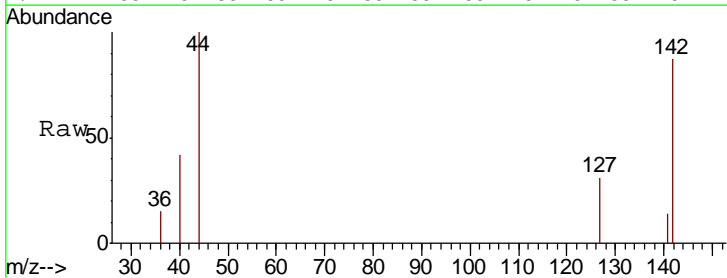
Instrument :
 MSVOA_N
 ClientSampled :
 VN0807WBL01

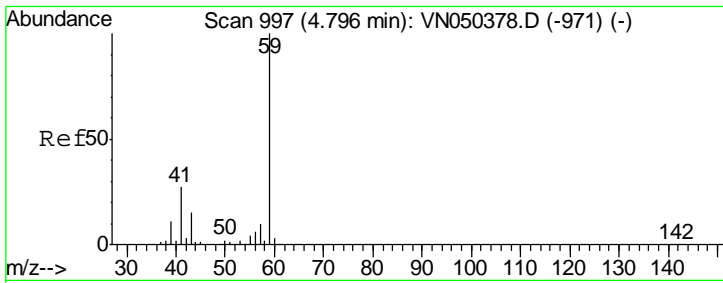
Tgt Ion	Resp	Lower	Upper
94	7901		
94	100		
96	85.1	74.6	112.0



#10
 Methyl Iodide
 Concen: 0.87 ug/l
 RT: 3.94 min Scan# 732
 Delta R.T. -0.00 min
 Lab File: VN050424.D
 Acq: 7 Aug 2018 12:08

Tgt Ion	Resp	Lower	Upper
142	3036		
142	100		
127	16.7	33.4	50.2#
141	4.8	11.6	17.4#

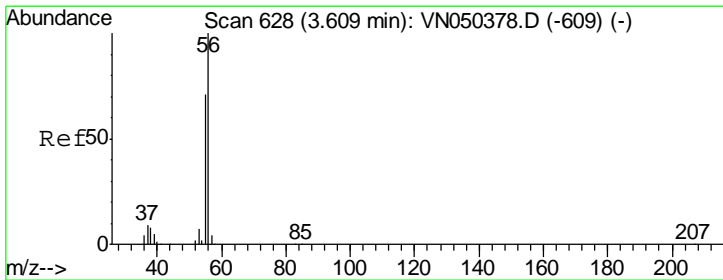
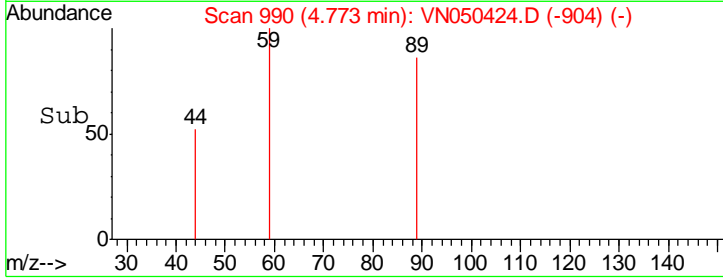
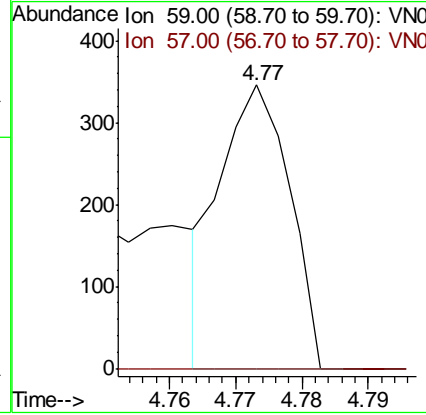
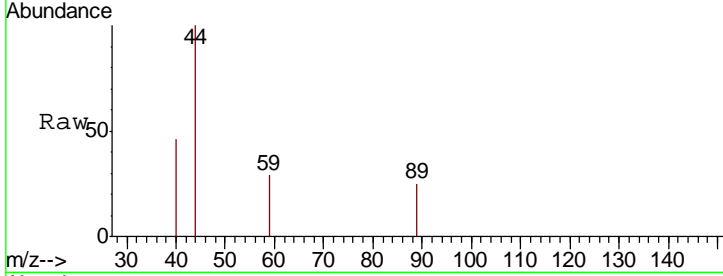




#11
 Tert butyl alcohol
 Concen: 0.34 ug/l
 RT: 4.77 min Scan# 990
 Delta R.T. -0.02 min
 Lab File: VN050424.D
 Acq: 7 Aug 2018 12:08

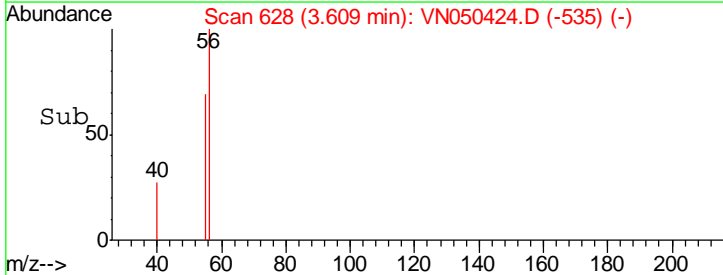
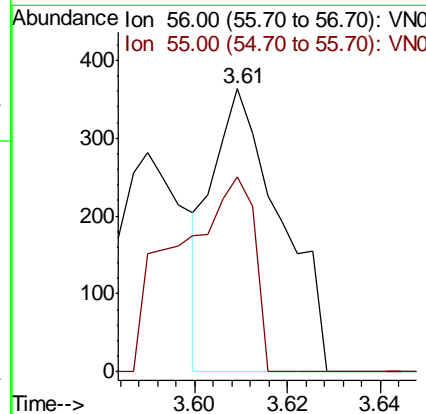
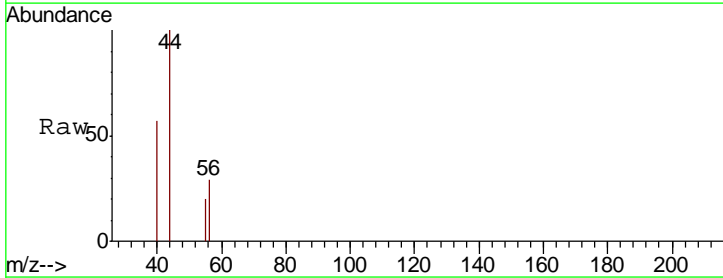
Instrument :
 MSVOA_N
ClientSampled :
 VN0807WBL01

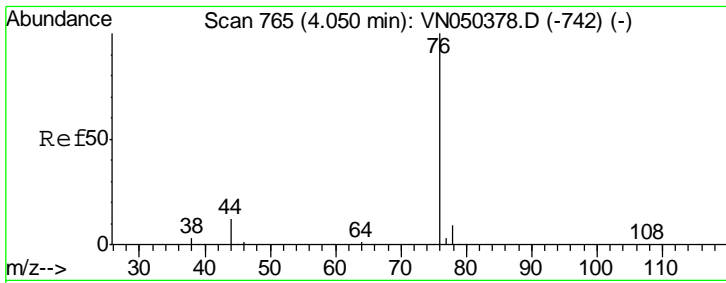
Tgt Ion	Resp	Lower	Upper
59	100		
57	0.0	8.5	12.7#



#13
 Acrolein
 Concen: 15.39 ug/l
 RT: 3.61 min Scan# 628
 Delta R.T. 0.00 min
 Lab File: VN050424.D
 Acq: 7 Aug 2018 12:08

Tgt Ion	Resp	Lower	Upper
56	100		
55	78.4	55.8	83.6

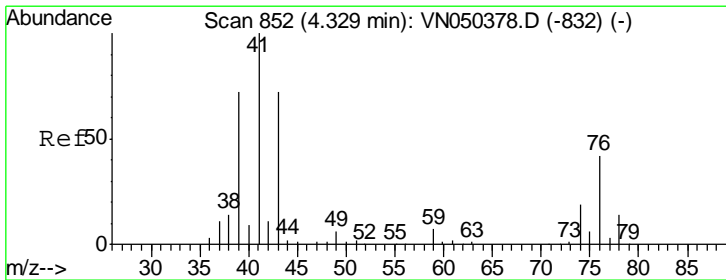
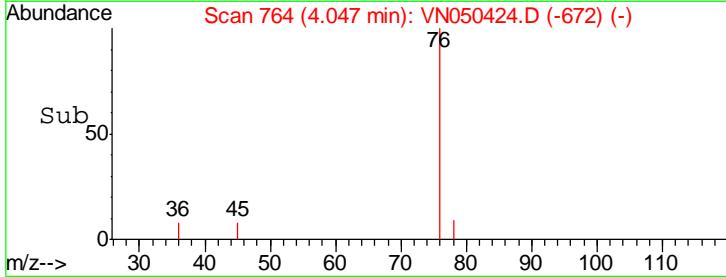
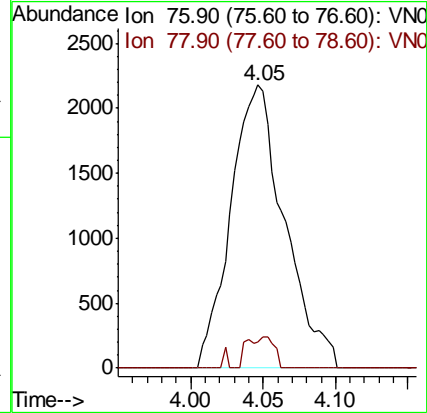
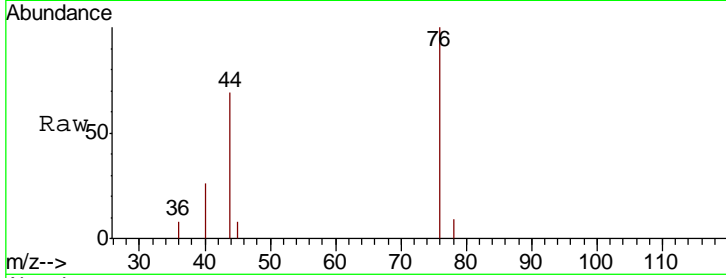




#17
 Carbon Disulfide
 Concen: 0.23 ug/l
 RT: 4.05 min Scan# 764
 Delta R.T. -0.00 min
 Lab File: VN050424.D
 Acq: 7 Aug 2018 12:08

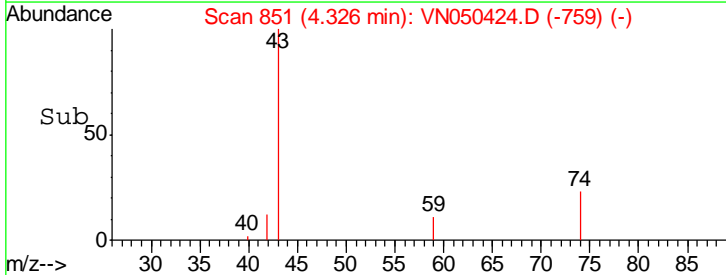
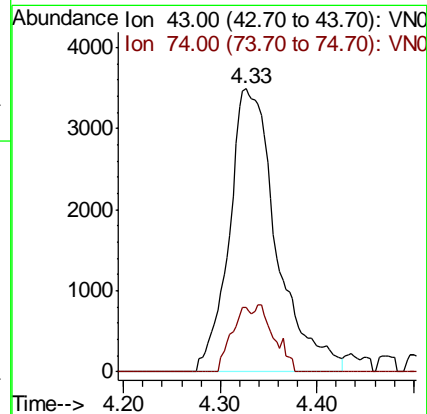
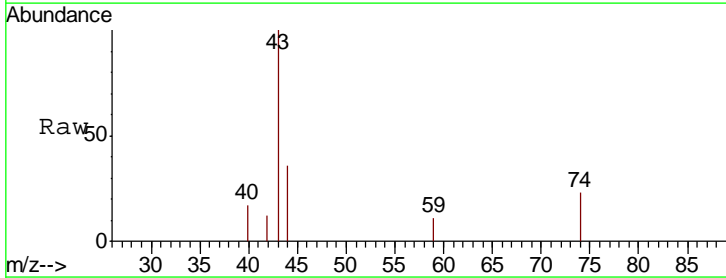
Instrument :
 MSVOA_N
 ClientSampleId :
 VN0807WBL01

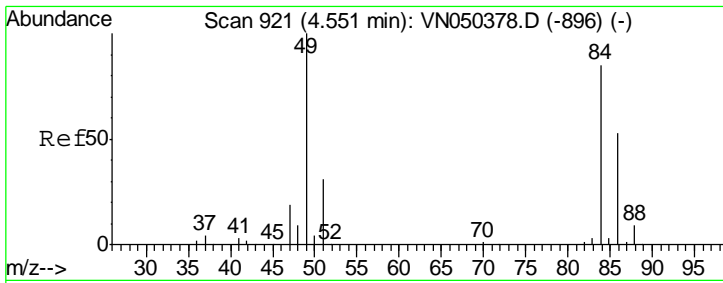
Tgt Ion: 76 Resp: 5617
 Ion Ratio Lower Upper
 76 100
 78 9.5 7.3 10.9



#18
 Methyl Acetate
 Concen: 1.47 ug/l
 RT: 4.33 min Scan# 851
 Delta R.T. -0.00 min
 Lab File: VN050424.D
 Acq: 7 Aug 2018 12:08

Tgt Ion: 43 Resp: 11861
 Ion Ratio Lower Upper
 43 100
 74 9.9 19.2 28.8#

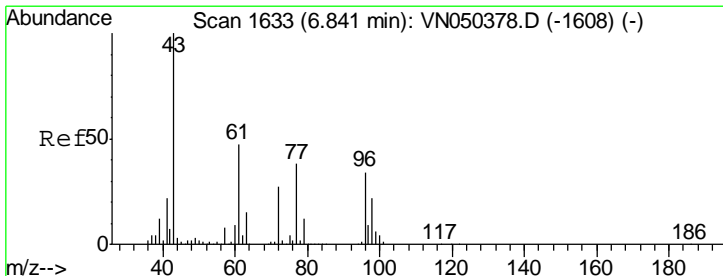
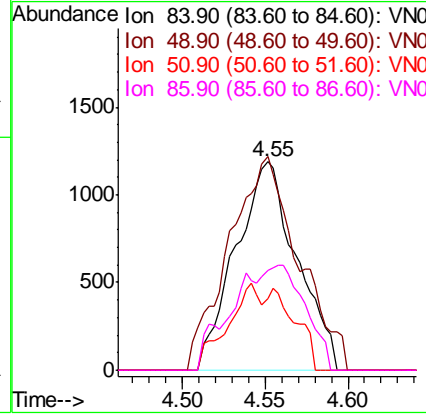
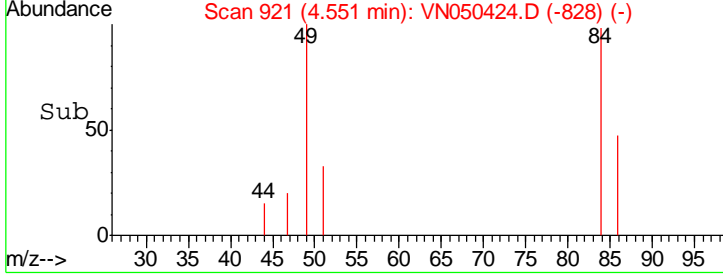
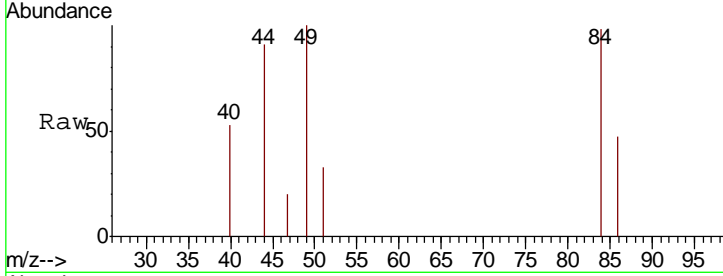




#20
 Methylene Chloride
 Concen: Below Cal
 RT: 4.55 min Scan# 921
 Delta R.T. 0.00 min
 Lab File: VN050424.D
 Acq: 7 Aug 2018 12:08

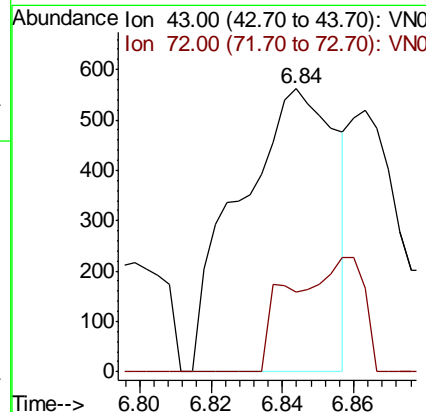
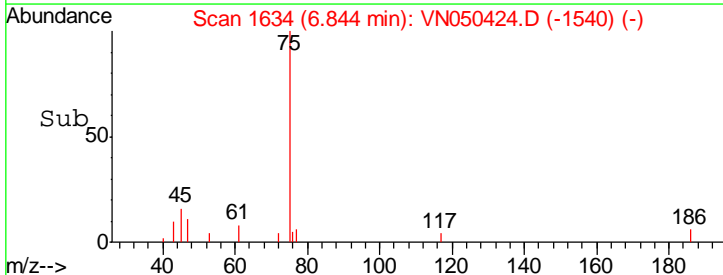
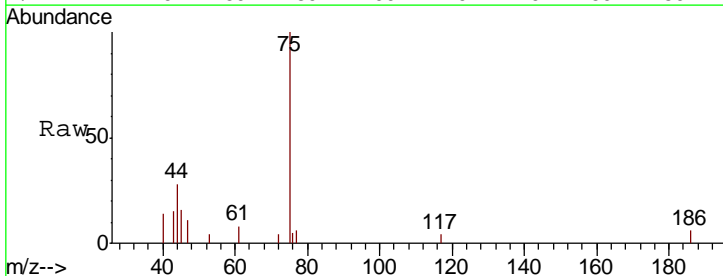
Instrument :
 MSVOA_N
 ClientSampled :
 VN0807WBL01

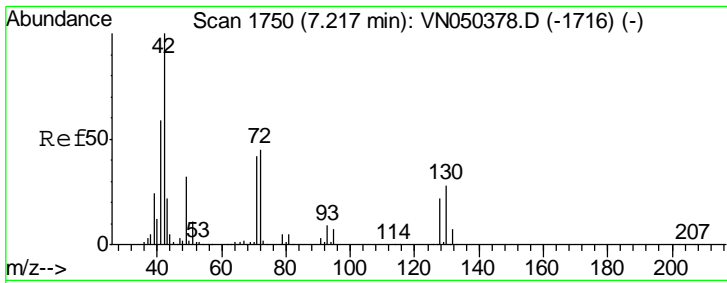
Tgt Ion	Resp	Lower	Upper
84	100		
49	88.7	94.8	142.2#
51	34.3	28.3	42.5
86	48.1	51.0	76.6#



#25
 2-Butanone
 Concen: 0.23 ug/l
 RT: 6.84 min Scan# 1634
 Delta R.T. 0.00 min
 Lab File: VN050424.D
 Acq: 7 Aug 2018 12:08

Tgt Ion	Resp	Lower	Upper
43	100		
72	28.1	21.5	32.3

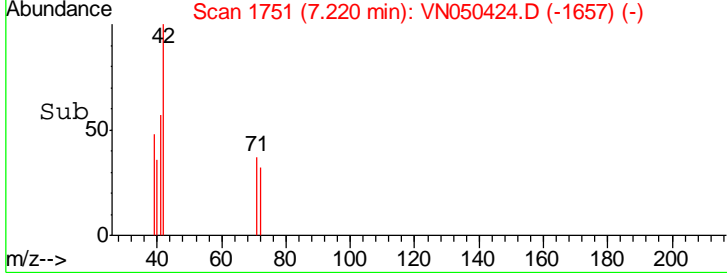
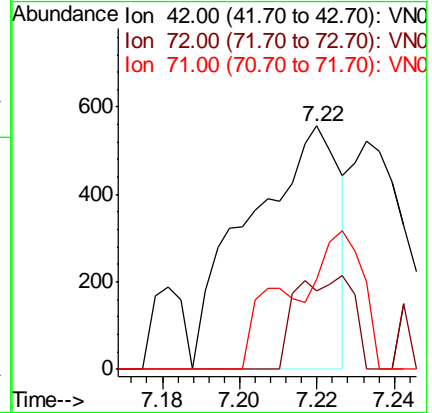
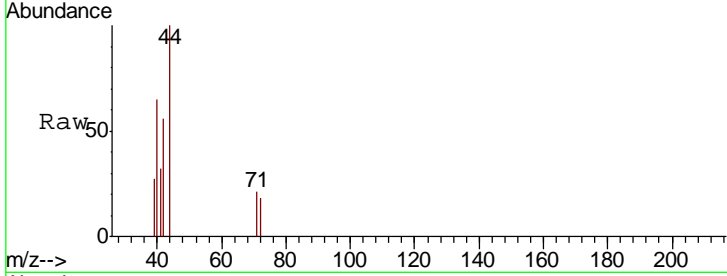




#29
 Tetrahydrofuran
 Concen: 0.37 ug/l
 RT: 7.22 min Scan# 1751
 Delta R.T. 0.00 min
 Lab File: VN050424.D
 Acq: 7 Aug 2018 12:08

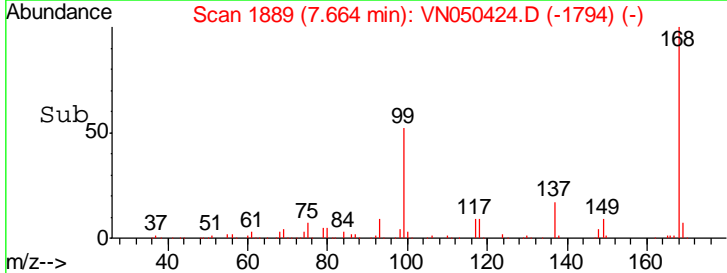
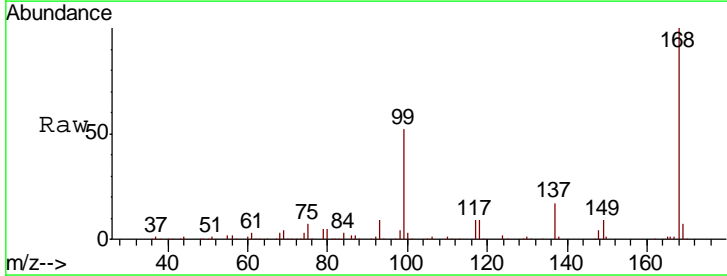
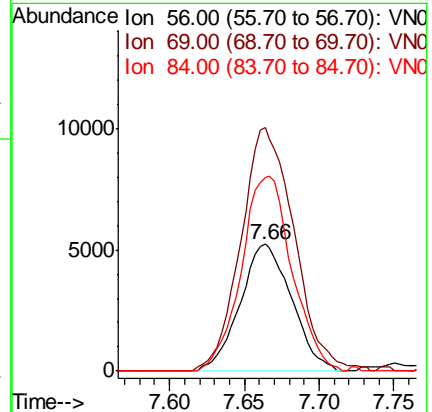
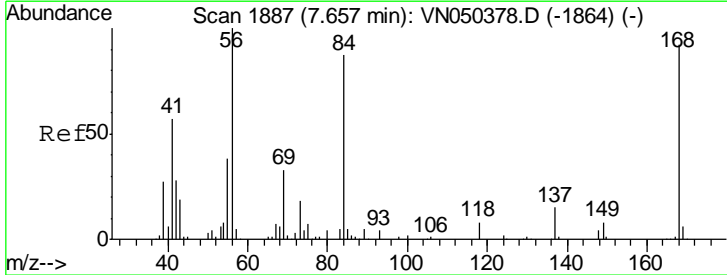
Instrument :
 MSVOA_N
 ClientSampled :
 VN0807WBL01

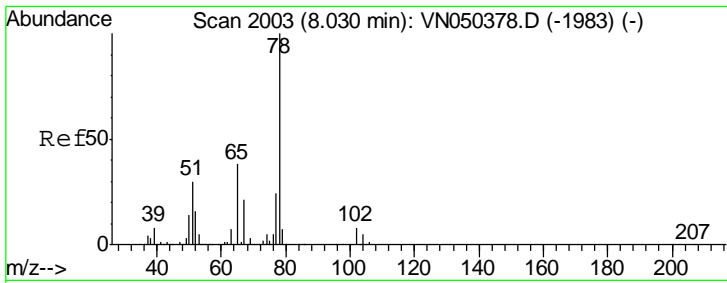
Tgt Ion	Resp	Lower	Upper
42	100		
72	24.2	35.9	53.9#
71	27.4	33.7	50.5#



#31
 Cyclohexane
 Concen: 0.32 ug/l
 RT: 7.66 min Scan# 1889
 Delta R.T. 0.01 min
 Lab File: VN050424.D
 Acq: 7 Aug 2018 12:08

Tgt Ion	Resp	Lower	Upper
56	100		
69	191.6	26.2	39.4#
84	152.4	67.4	101.0#

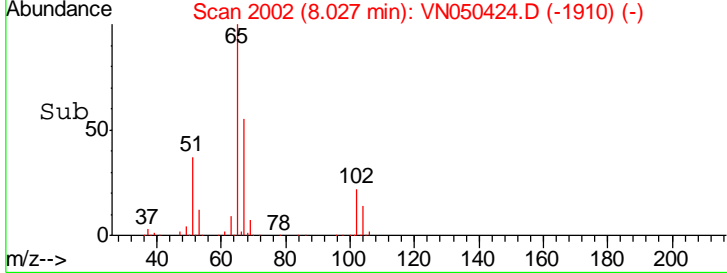
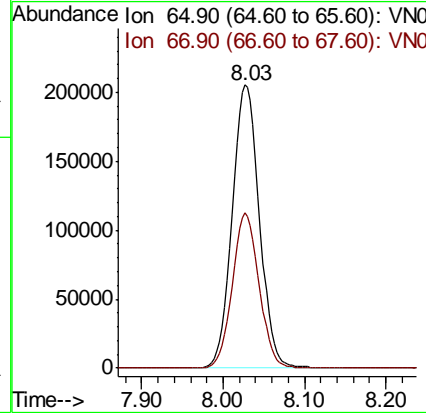
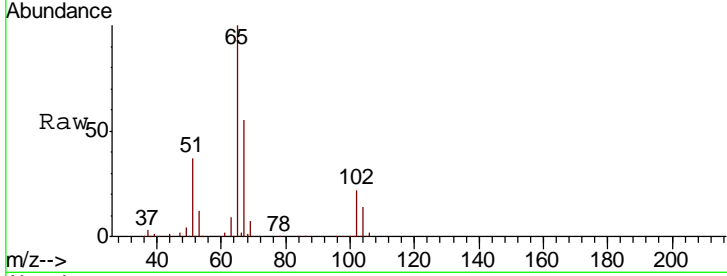




#33
 1,2-Dichloroethane-d4
 Concen: 51.89 ug/l
 RT: 8.03 min Scan# 2002
 Delta R.T. -0.00 min
 Lab File: VN050424.D
 Acq: 7 Aug 2018 12:08

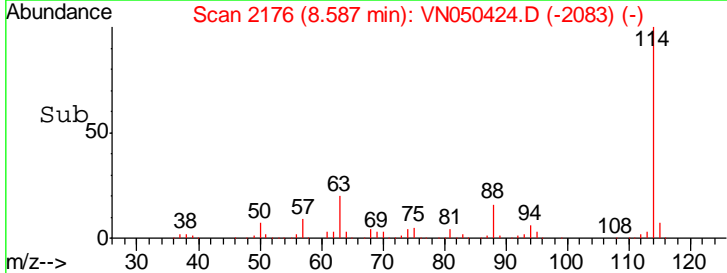
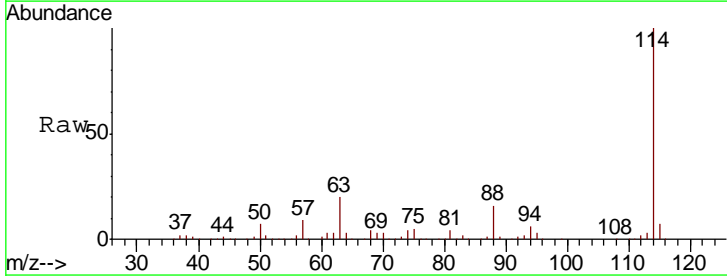
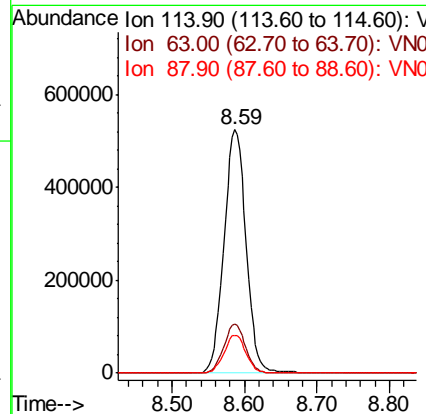
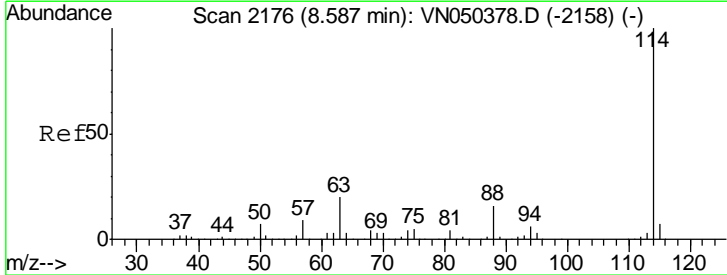
Instrument :
 MSVOA_N
ClientSampled :
 VN0807WBL01

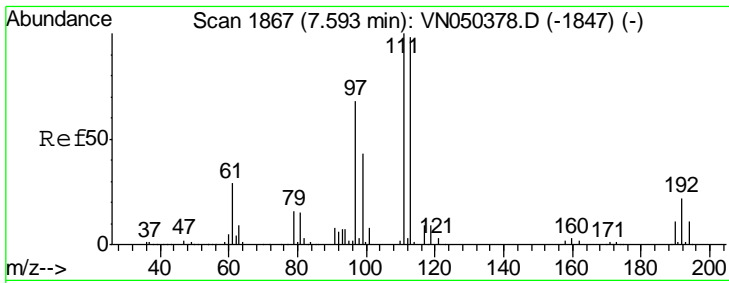
Tgt Ion	Resp	Lower	Upper
65	100		
67	53.8	0.0	108.4



#34
 1,4-Difluorobenzene
 Concen: 50.00 ug/l
 RT: 8.59 min Scan# 2176
 Delta R.T. -0.00 min
 Lab File: VN050424.D
 Acq: 7 Aug 2018 12:08

Tgt Ion	Resp	Lower	Upper
114	100		
63	20.1	0.0	40.0
88	15.6	0.0	31.2

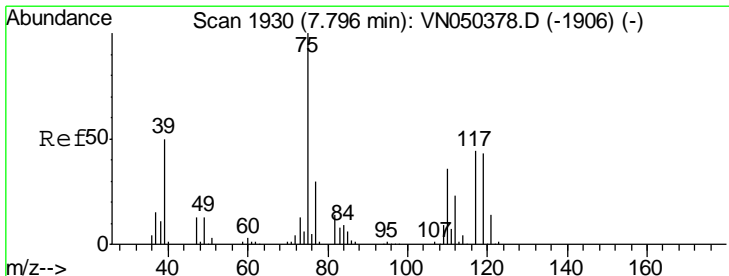
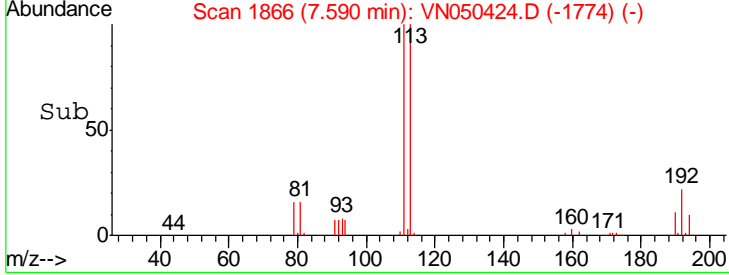
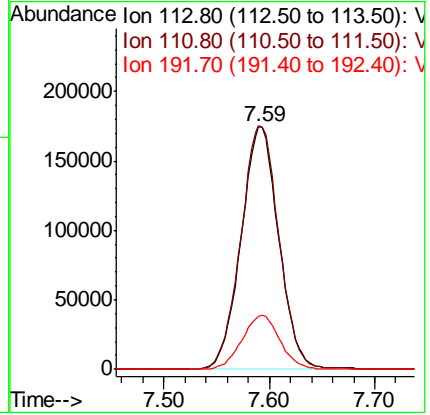
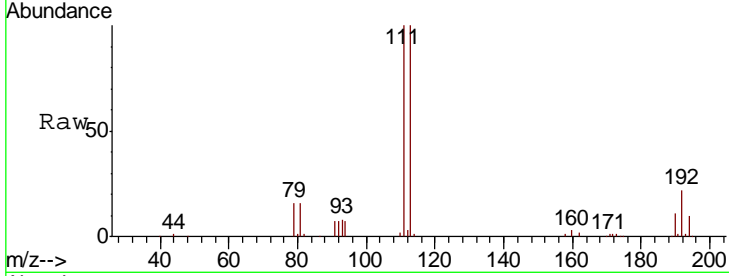




#35
 Dibromofluoromethane
 Concen: 48.80 ug/l
 RT: 7.59 min Scan# 1866
 Delta R.T. -0.00 min
 Lab File: VN050424.D
 Acq: 7 Aug 2018 12:08

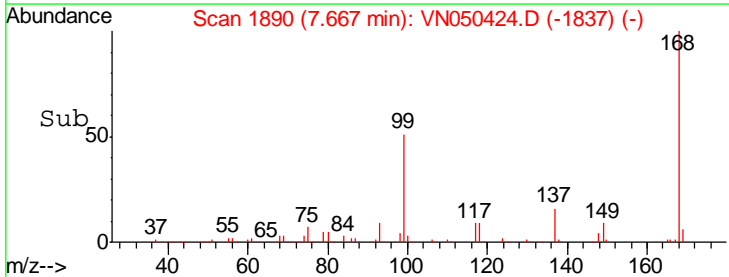
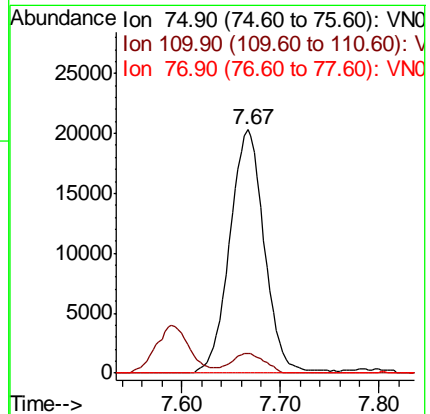
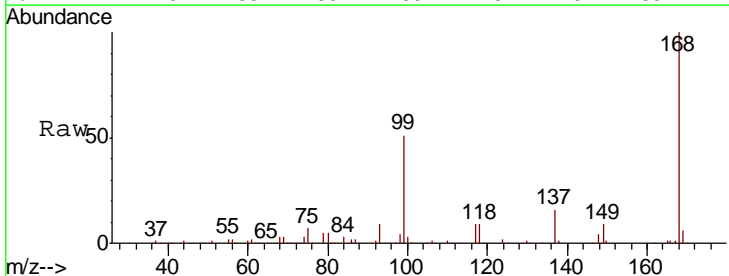
Instrument :
 MSVOA_N
 ClientSampled :
 VN0807WBL01

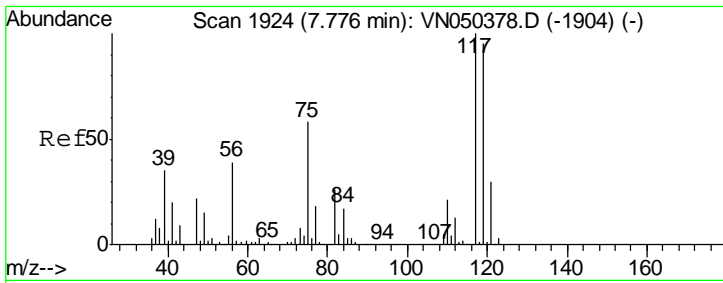
Tgt Ion	Resp	Lower	Upper
113	432651		
113	100		
111	102.3	80.7	121.1
192	22.3	17.8	26.6



#36
 1,1-Dichloropropene
 Concen: 4.09 ug/l
 RT: 7.67 min Scan# 1890
 Delta R.T. -0.13 min
 Lab File: VN050424.D
 Acq: 7 Aug 2018 12:08

Tgt Ion	Resp	Lower	Upper
75	49671		
75	100		
110	7.8	18.4	55.2#
77	0.0	25.3	37.9#

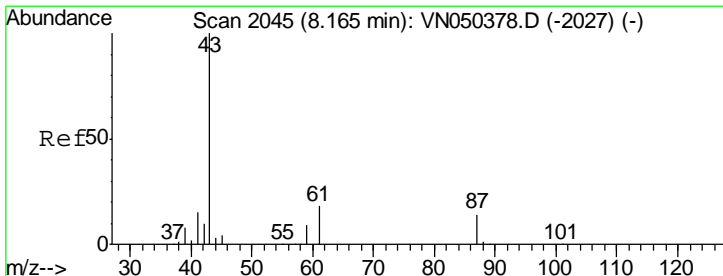
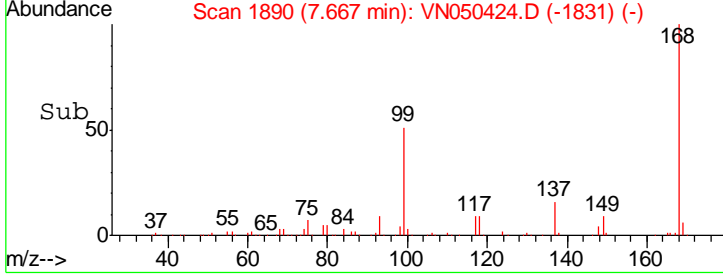
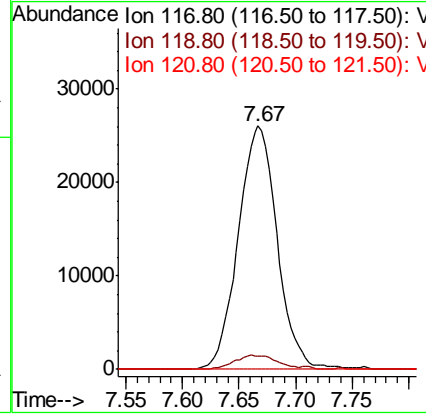
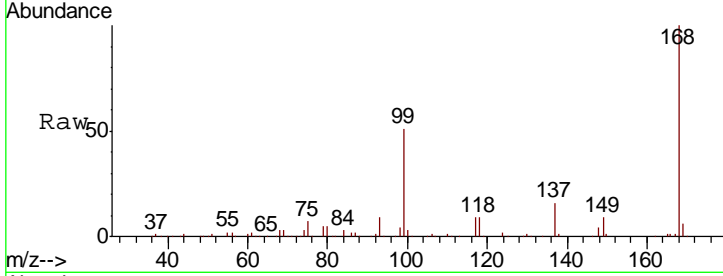




#38
 Carbon Tetrachloride
 Concen: 4.92 ug/l
 RT: 7.67 min Scan# 1890
 Delta R.T. -0.11 min
 Lab File: VN050424.D
 Acq: 7 Aug 2018 12:08

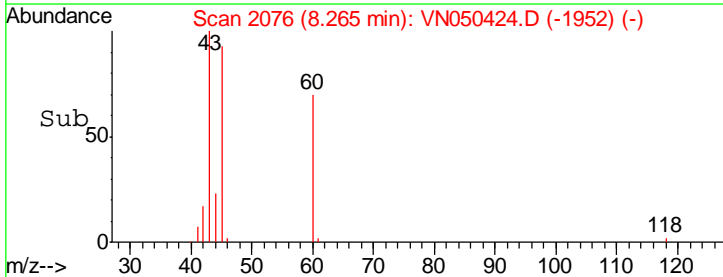
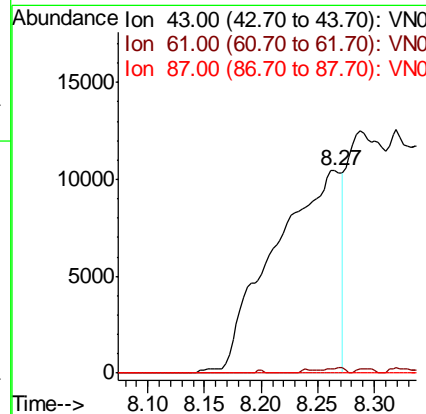
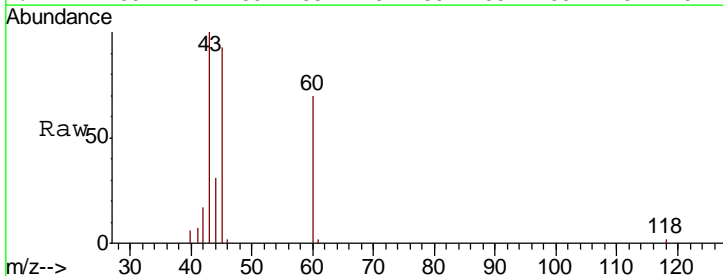
Instrument : MSVOA_N
 ClientSampled : VN0807WBL01

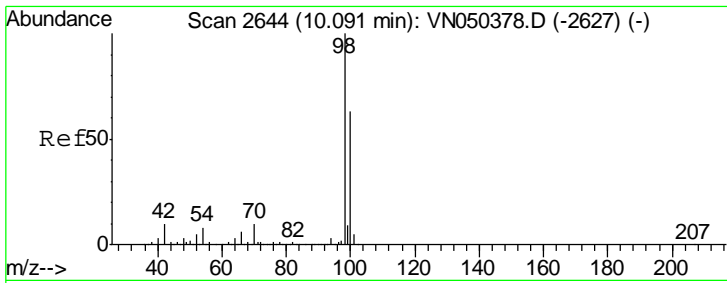
Tgt Ion	Resp	Lower	Upper
117	100		
119	5.2	77.4	116.0#
121	0.0	23.9	35.9#



#43
 Isopropyl Acetate
 Concen: 2.85 ug/l
 RT: 8.27 min Scan# 2076
 Delta R.T. 0.10 min
 Lab File: VN050424.D
 Acq: 7 Aug 2018 12:08

Tgt Ion	Resp	Lower	Upper
43	100		
61	0.6	15.8	23.6#
87	0.0	10.3	15.5#

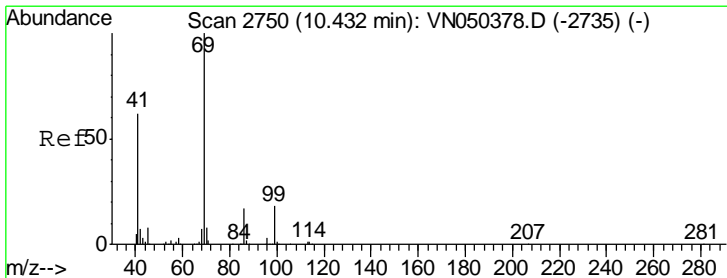
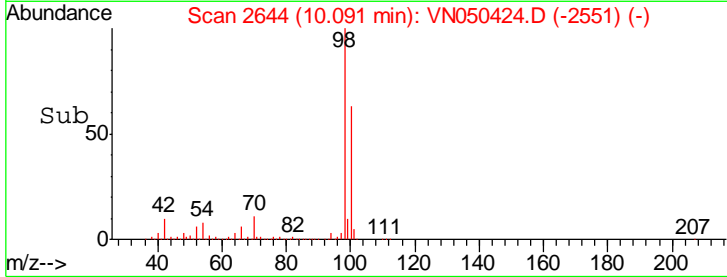
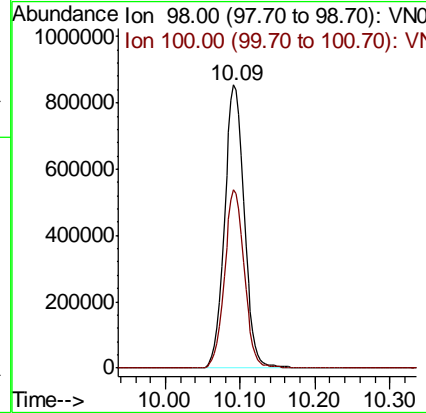
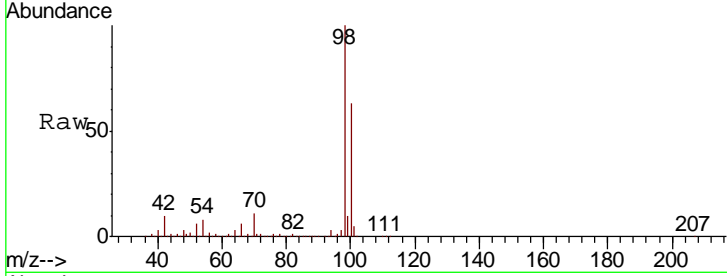




#50
 Toluene-d8
 Concen: 46.69 ug/l
 RT: 10.09 min Scan# 2644
 Delta R.T. -0.00 min
 Lab File: VN050424.D
 Acq: 7 Aug 2018 12:08

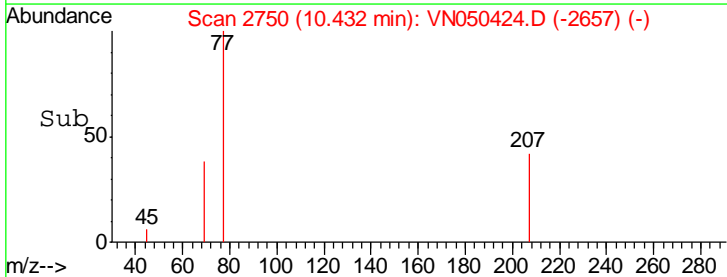
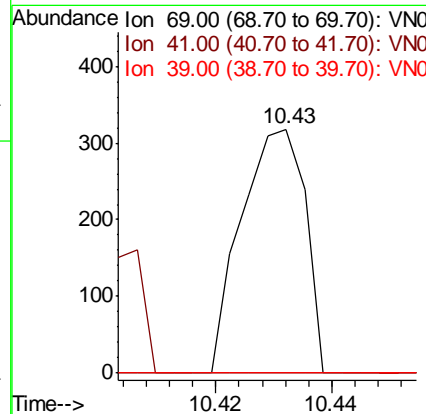
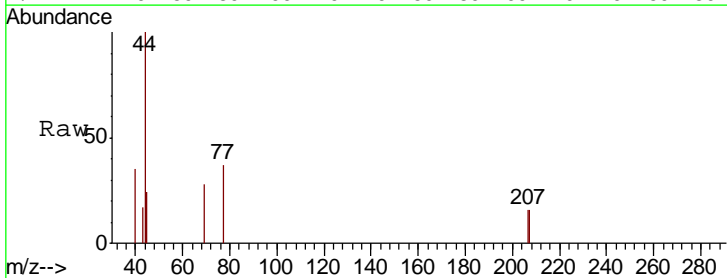
Instrument :
 MSVOA_N
 ClientSampleId :
 VN0807WBL01

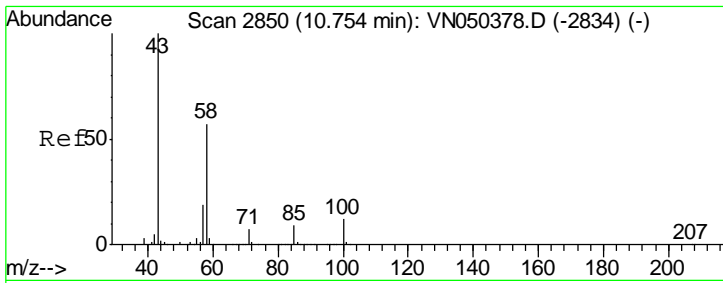
Tgt Ion: 98 Resp: 1556408
 Ion Ratio Lower Upper
 98 100
 100 63.0 50.7 76.1



#56
 Ethyl methacrylate
 Concen: 1.73 ug/l
 RT: 10.43 min Scan# 2750
 Delta R.T. 0.00 min
 Lab File: VN050424.D
 Acq: 7 Aug 2018 12:08

Tgt Ion: 69 Resp: 242
 Ion Ratio Lower Upper
 69 100
 41 0.0 51.0 76.4#
 39 0.0 26.6 40.0#

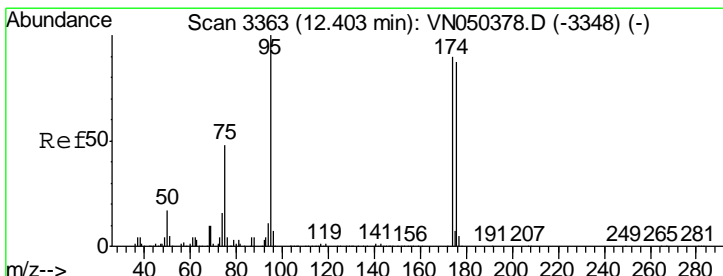
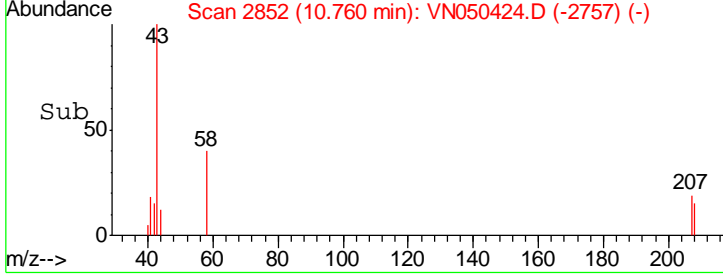
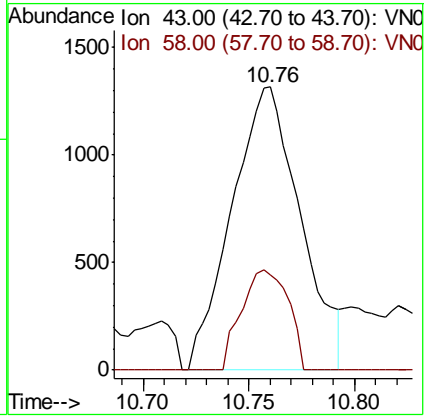
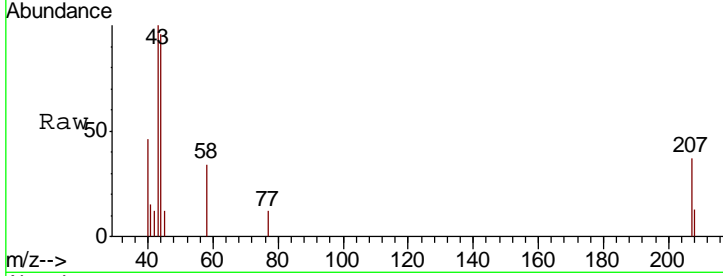




#59
 2-Hexanone
 Concen: 0.39 ug/l
 RT: 10.76 min Scan# 2852
 Delta R.T. 0.01 min
 Lab File: VN050424.D
 Acq: 7 Aug 2018 12:08

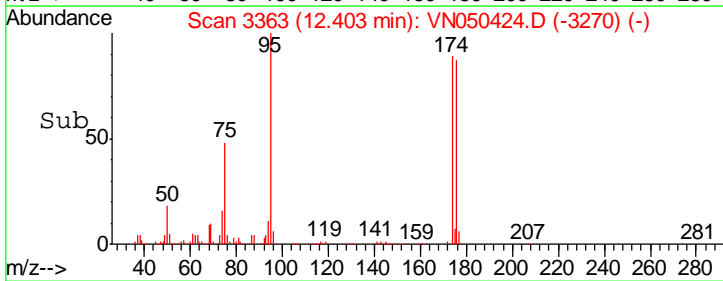
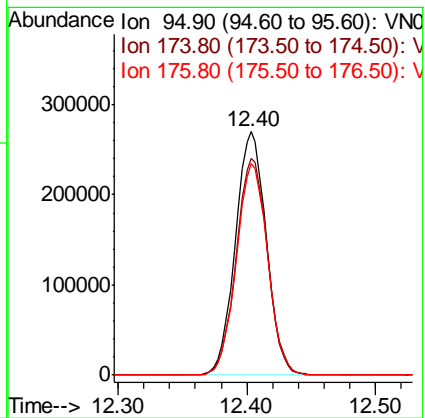
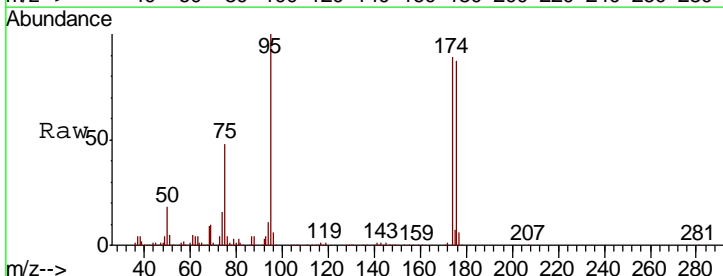
Instrument : MSVOA_N
 Client Sampled : VN0807WBL01

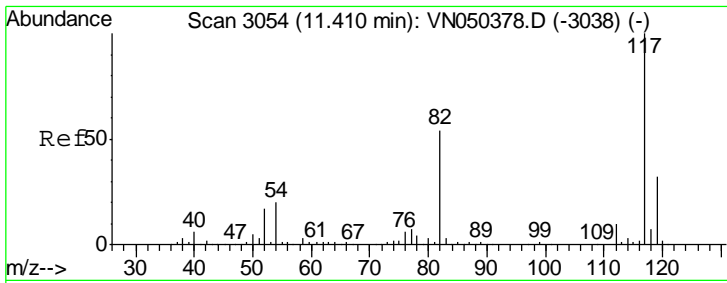
Tgt Ion: 43 Resp: 2979
 Ion Ratio Lower Upper
 43 100
 58 24.2 27.6 82.7#



#62
 4-Bromofluorobenzene
 Concen: 39.53 ug/l
 RT: 12.40 min Scan# 3363
 Delta R.T. -0.00 min
 Lab File: VN050424.D
 Acq: 7 Aug 2018 12:08

Tgt Ion: 95 Resp: 449171
 Ion Ratio Lower Upper
 95 100
 174 90.7 0.0 178.2
 176 87.9 0.0 173.4



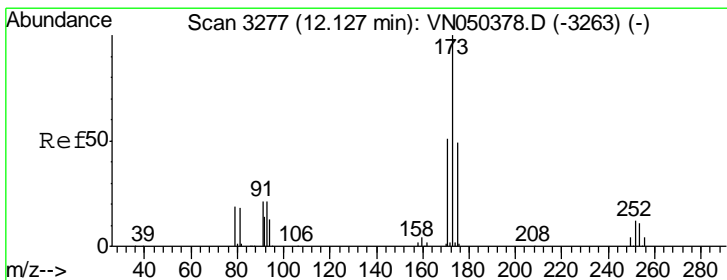
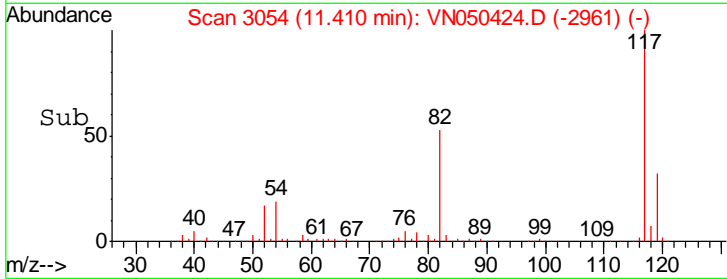
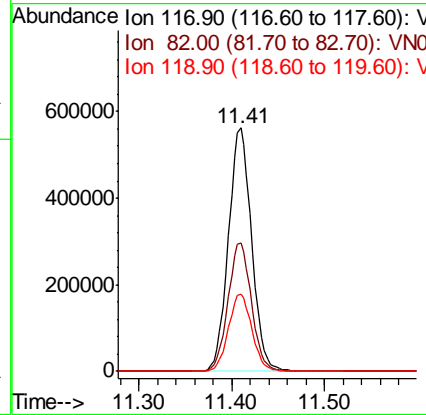
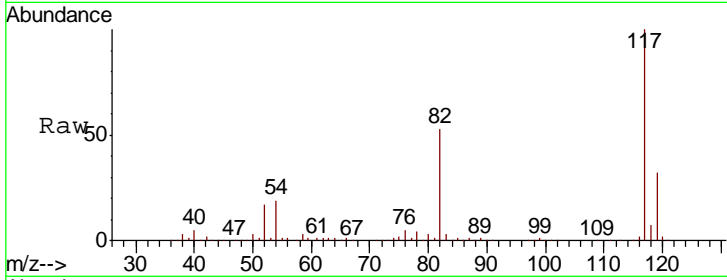


#63
 Chlorobenzene-d5
 Concen: 50.00 ug/l
 RT: 11.41 min Scan# 3054
 Delta R.T. -0.00 min
 Lab File: VN050424.D
 Acq: 7 Aug 2018 12:08

Instrument :
 MSVOA_N
 ClientSampled :
 VN0807WBL01

Tgt Ion:117 Resp: 975392

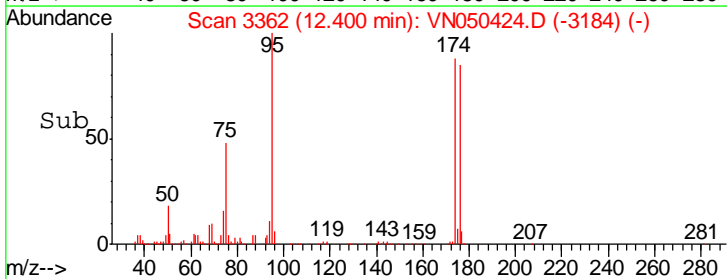
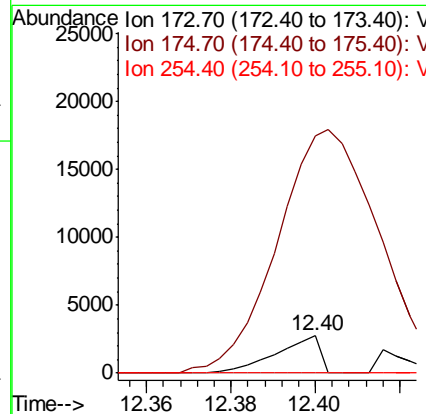
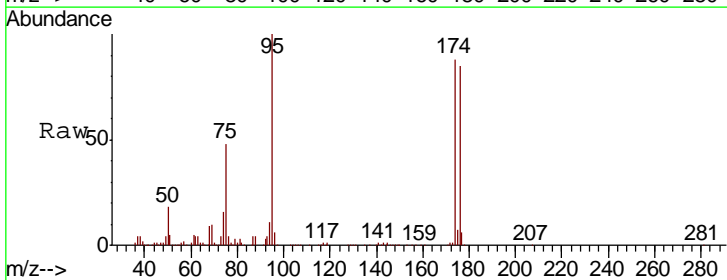
Ion	Ratio	Lower	Upper
117	100		
82	52.8	43.7	65.5
119	31.8	26.1	39.1

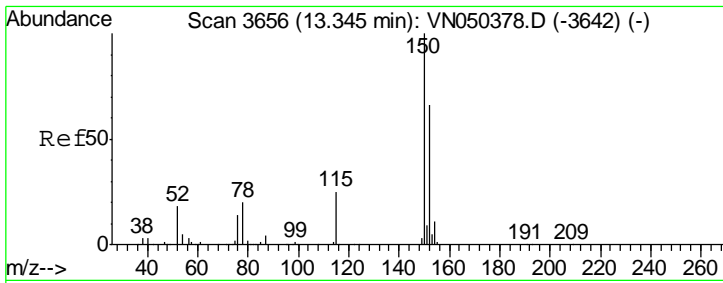


#71
 Bromoform
 Concen: 0.31 ug/l
 RT: 12.40 min Scan# 3362
 Delta R.T. 0.27 min
 Lab File: VN050424.D
 Acq: 7 Aug 2018 12:08

Tgt Ion:173 Resp: 1985

Ion	Ratio	Lower	Upper
173	100		
175	1261.1	24.1	72.2#
254	0.0	0.2	0.2#

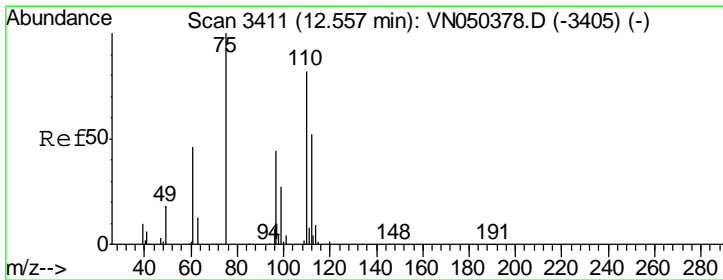
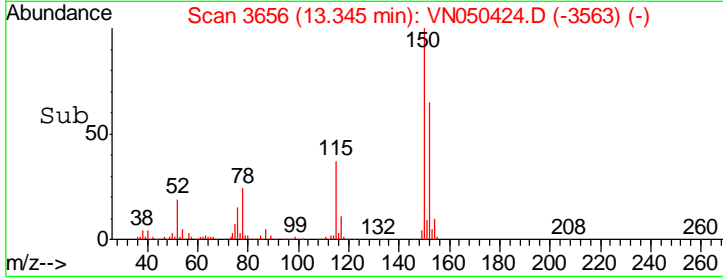
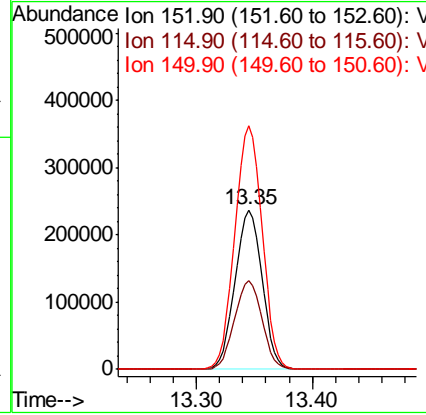
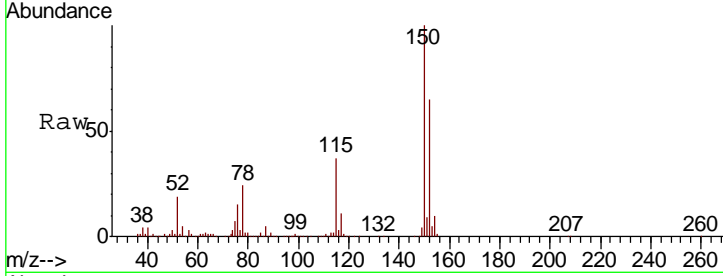




#72
 1,4-Dichlorobenzene-d4
 Concen: 50.00 ug/l
 RT: 13.35 min Scan# 3656
 Delta R.T. -0.00 min
 Lab File: VN050424.D
 Acq: 7 Aug 2018 12:08

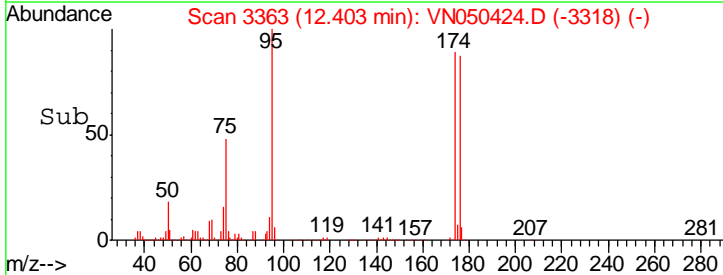
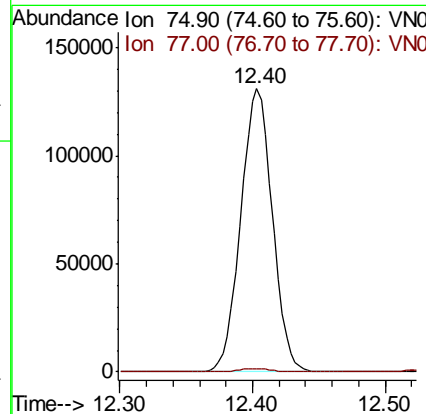
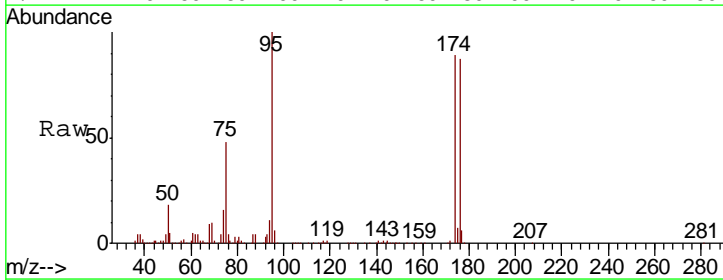
Instrument :
 MSVOA_N
 ClientSampled :
 VN0807WBL01

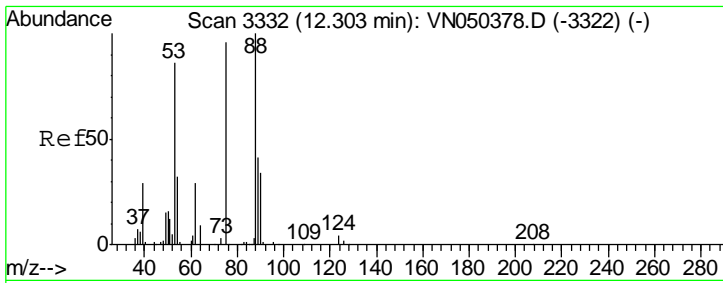
Tgt Ion	Resp	Lower	Upper
152	100		
115	56.5	27.8	83.3
150	154.8	0.0	348.6



#76
 1,2,3-Trichloropropane
 Concen: 31.36 ug/l
 RT: 12.40 min Scan# 3363
 Delta R.T. -0.15 min
 Lab File: VN050424.D
 Acq: 7 Aug 2018 12:08

Tgt Ion	Resp	Lower	Upper
75	100		
77	1.3	0.0	0.0#

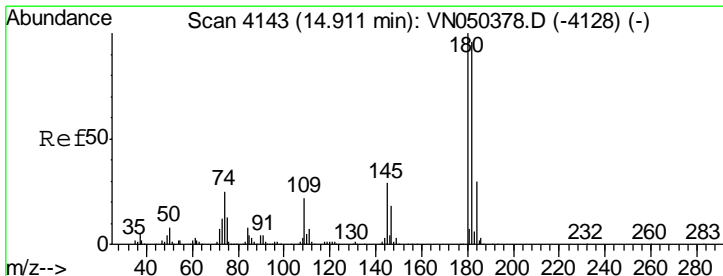
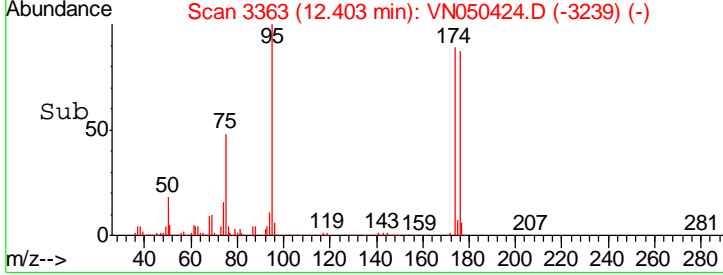
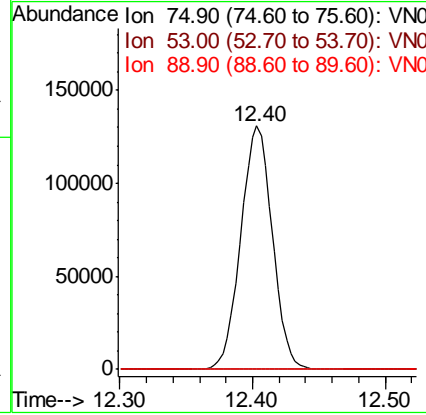
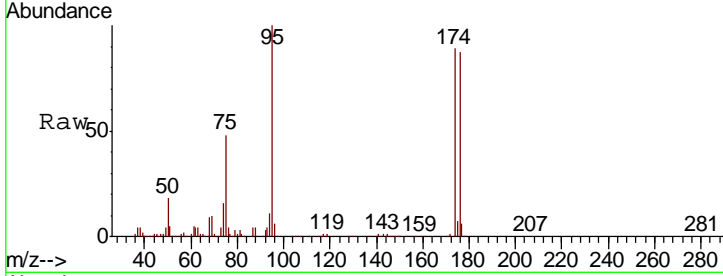




#81
 trans-1,4-Dichloro-2-butene
 Concen: 110.20 ug/l
 RT: 12.40 min Scan# 3363
 Delta R.T. 0.10 min
 Lab File: VN050424.D
 Acq: 7 Aug 2018 12:08

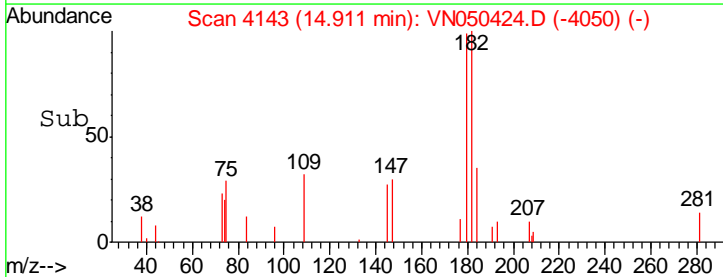
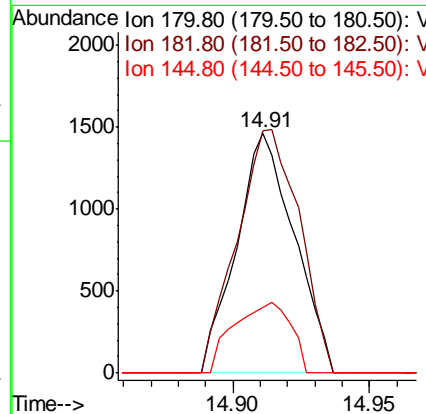
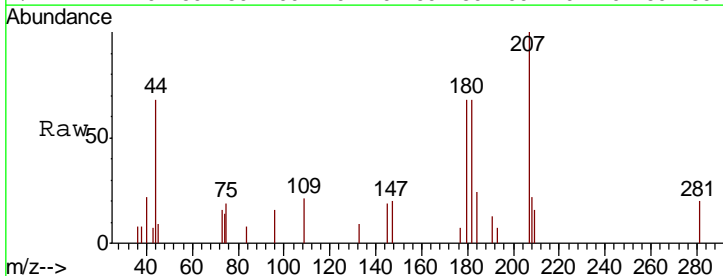
Instrument : MSVOA_N
 ClientSampled : VN0807WBL01

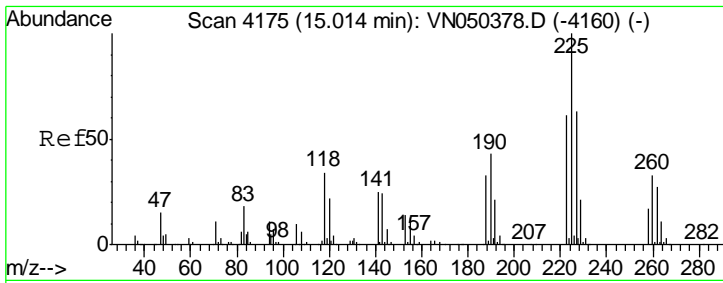
Tgt Ion	Resp	Lower	Upper
75	100		
53	0.3	73.5	110.3#
89	0.0	36.0	54.0#



#93
 1,2,4-Trichlorobenzene
 Concen: 0.31 ug/l
 RT: 14.91 min Scan# 4143
 Delta R.T. -0.00 min
 Lab File: VN050424.D
 Acq: 7 Aug 2018 12:08

Tgt Ion	Resp	Lower	Upper
180	100		
182	109.2	46.7	140.1
145	28.9	13.8	41.4

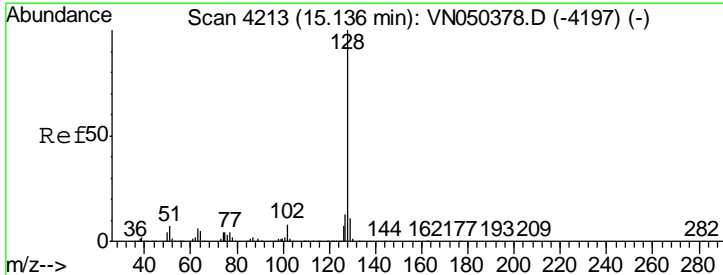
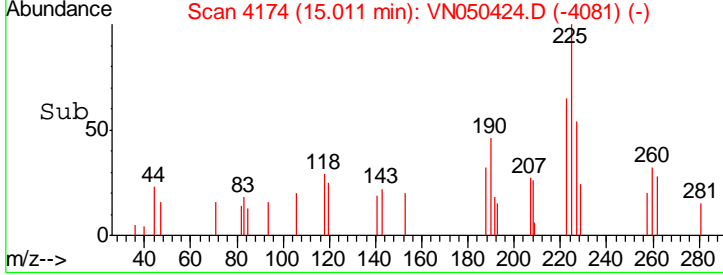
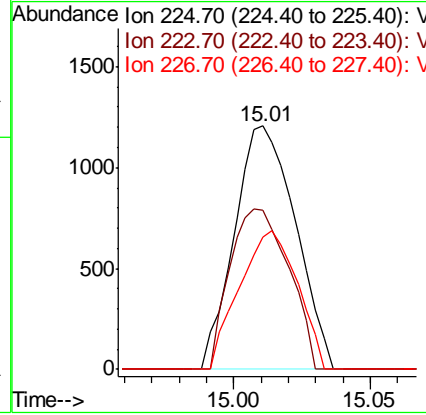
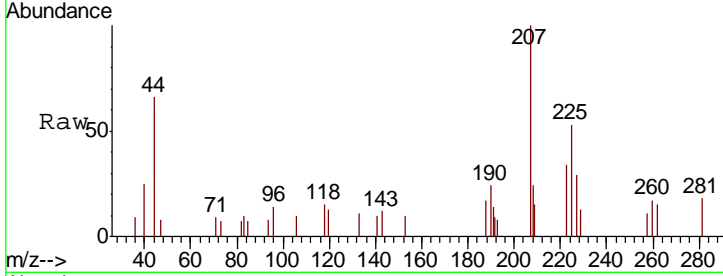




#94
 Hexachlorobutadiene
 Concen: Below Cal
 RT: 15.01 min Scan# 4174
 Delta R.T. -0.00 min
 Lab File: VN050424.D
 Acq: 7 Aug 2018 12:08

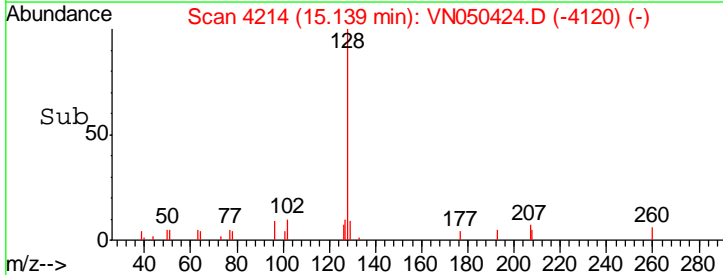
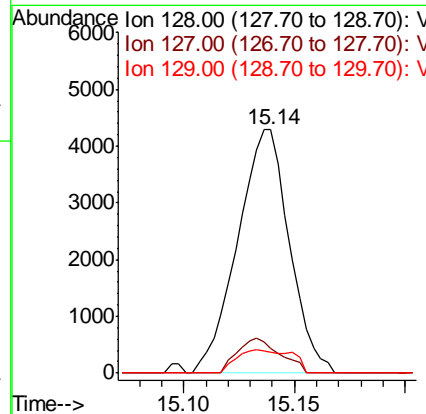
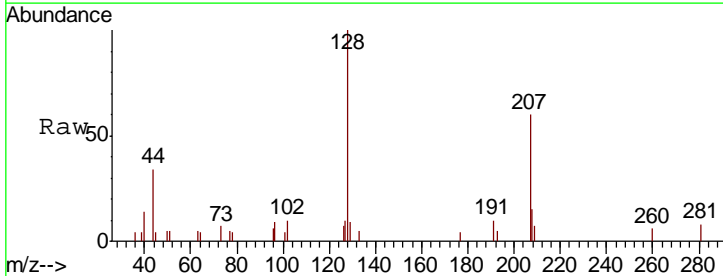
Instrument : MSVOA_N
 ClientSampled : VN0807WBL01

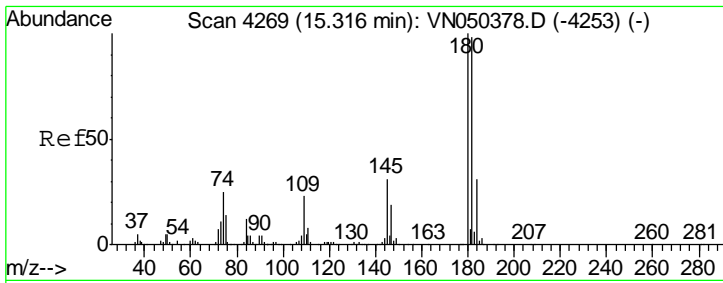
Tgt Ion	Resp	Lower	Upper
225	1874		
223	63.4	31.4	94.2
227	54.2	32.1	96.5



#95
 Naphthalene
 Concen: 3.97 ug/l
 RT: 15.14 min Scan# 4214
 Delta R.T. 0.00 min
 Lab File: VN050424.D
 Acq: 7 Aug 2018 12:08

Tgt Ion	Resp	Lower	Upper
128	6972		
127	11.8	10.4	15.6
129	10.1	8.8	13.2





#96
 1,2,3-Trichlorobenzene
 Concen: 0.44 ug/l
 RT: 15.32 min Scan# 4269
 Delta R.T. -0.00 min
 Lab File: VN050424.D
 Acq: 7 Aug 2018 12:08

Instrument : MSVOA_N
 ClientSampled : VN0807WBL01

Tot Ion	Resp	Lower	Upper
180	100		
182	96.4	48.1	144.4
145	23.4	15.3	45.9

