

Data Path : Z:\VOASRV\HPCHEM1\MSVOA N\DATA\VN080918\
 Data File : VN050479.D
 Acq On : 9 Aug 2018 12:33
 Operator : MD\SY
 Sample : J4310-03
 Misc : 3.48µ/10mL/100uL/5.00mL/MSVOA_N/MEOH
 ALS Vial : 5 Sample Multiplier: 1

Instrument :
 MSVOA_N
 ClientSampleId :

Quant Time: Aug 10 04:00:28 2018
 Quant Method : Z:\VOASRV\HPCHEM1\MSVOA_N\METHODS\82N080618W.M
 Quant Title : SW846 8260
 QLast Update : Tue Aug 07 05:22:15 2018
 Response via : Initial Calibration

Internal Standards	R.T.	QIon	Response	Conc	Units	Dev(Min)
1) Pentafluorobenzene	7.66	168	721461	50.00	µg/l	0.00
34) 1,4-Difluorobenzene	8.59	114	1104739	50.00	µg/l	0.00
63) Chlorobenzene-d5	11.41	117	1010839	50.00	µg/l	0.00
72) 1,4-Dichlorobenzene-d4	13.35	152	464503	50.00	µg/l	0.00

System Monitoring Compounds

33) 1,2-Dichloroethane-d4	8.03	65	460764	47.80	µg/l	0.00
Spiked Amount	50.000		Recovery	=	95.60%	
35) Dibromofluoromethane	7.59	113	414333	46.74	µg/l	0.00
Spiked Amount	50.000		Recovery	=	93.48%	
50) Toluene-d8	10.09	98	1545973	46.39	µg/l	0.00
Spiked Amount	50.000		Recovery	=	92.78%	
62) 4-Bromofluorobenzene	12.40	95	502805	44.26	µg/l	0.00
Spiked Amount	50.000		Recovery	=	88.52%	

Target Compounds

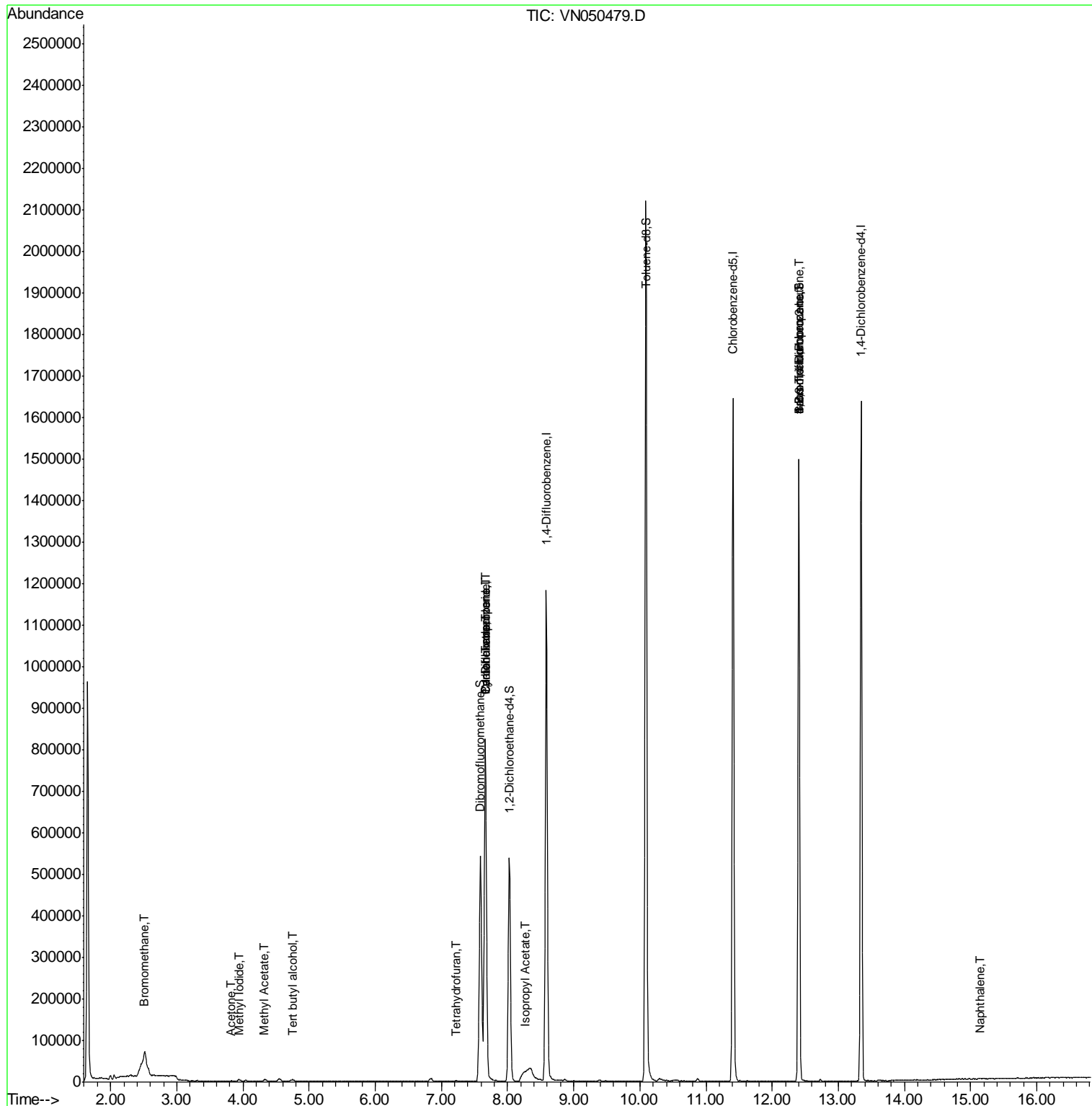
						Qvalue
3) Chloromethane	2.05	50	7904	Below Cal		98
5) Bromomethane	2.51	94	8493	1.85	µg/l	97
10) Methyl Iodide	3.94	142	6286	1.72	µg/l #	95
11) Tert butyl alcohol	4.75	59	2536	3.27	µg/l #	72
16) Acetone	3.83	43	2227	0.42	µg/l #	42
18) Methyl Acetate	4.33	43	8915	1.00	µg/l #	67
20) Methylene Chloride	4.54	84	5464	Below Cal		85
29) Tetrahydrofuran	7.22	42	941	0.37	µg/l #	47
31) Cyclohexane	7.66	56	12744	0.30	µg/l #	1
36) 1,1-Dichloropropene	7.67	75	48268	3.98	µg/l #	49
38) Carbon Tetrachloride	7.66	117	64041	5.06	µg/l #	16
43) Isopropyl Acetate	8.27	43	30973	2.05	µg/l #	61
71) Bromoform	12.41	173	3443	0.51	µg/l #	1
76) 1,2,3-Trichloropropane	12.40	75	240703	28.63	µg/l #	100
81) trans-1,4-Dichloro-2-buten	12.40	75	240703	100.59	µg/l #	13
94) Hexachlorobutadiene	15.01	225	128	Below Cal	#	18
95) Naphthalene	15.14	128	1508	3.68	µg/l #	77

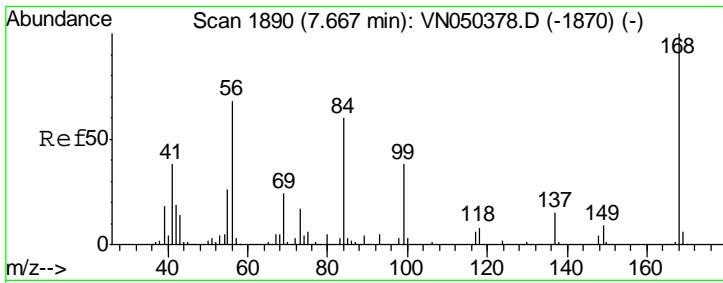
(#) = qualifier out of range (m) = manual integration (+) = signals summed

Data Path : Z:\VOASRV\HPCHEM1\MSVOA N\DATA\VN080918\
 Data File : VN050479.D
 Acq On : 9 Aug 2018 12:33
 Operator : MD\SY
 Sample : J4310-03
 Misc : 3.48µ/10mL/100uL/5.00mL/MSVOA_N/MEOH
 ALS Vial : 5 Sample Multiplier: 1

Instrument :
 MSVOA_N
 ClientSampleId :

Quant Time: Aug 10 04:00:28 2018
 Quant Method : Z:\VOASRV\HPCHEM1\MSVOA_N\METHODS\82N080618W.M
 Quant Title : SW846 8260
 QLast Update : Tue Aug 07 05:22:15 2018
 Response via : Initial Calibration

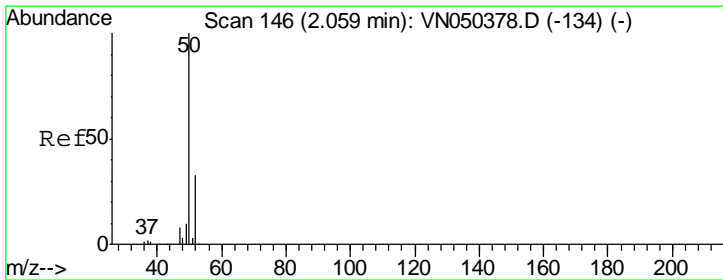
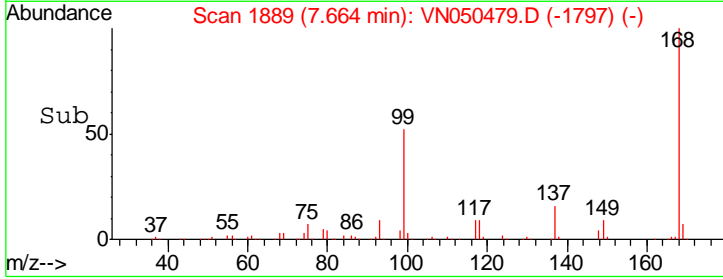
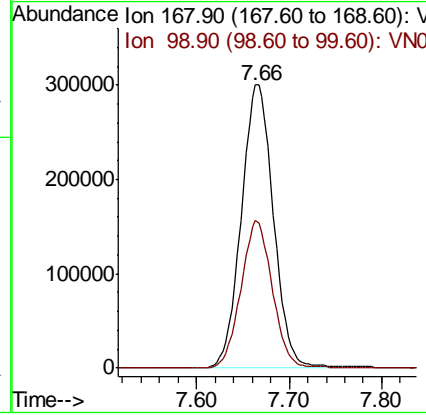
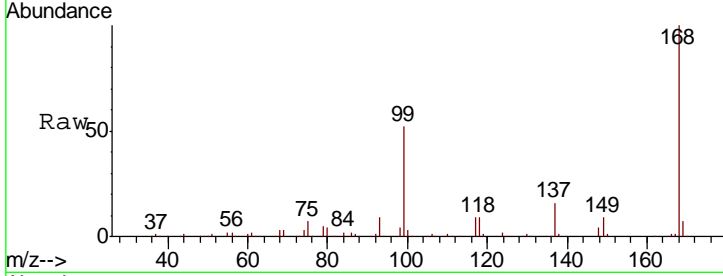




#1
 Pentafluorobenzene
 Concen: 50.00 ug/l
 RT: 7.66 min Scan# 1889
 Delta R.T. -0.00 min
 Lab File: VN050479.D
 Acq: 9 Aug 2018 12:33

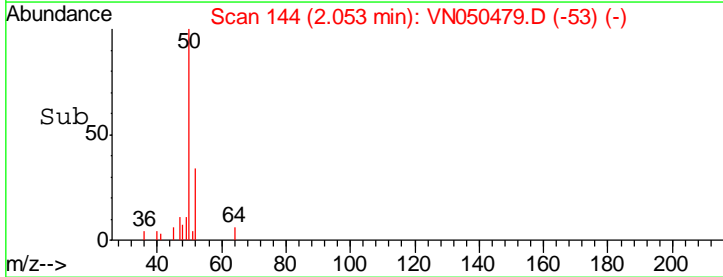
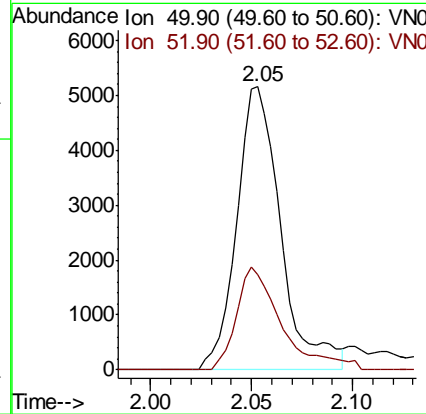
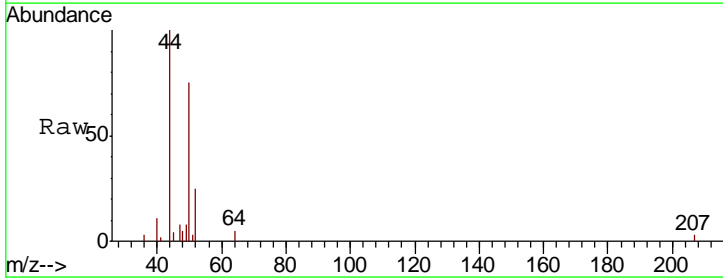
Instrument :
 MSVOA_N
 ClientSampled :

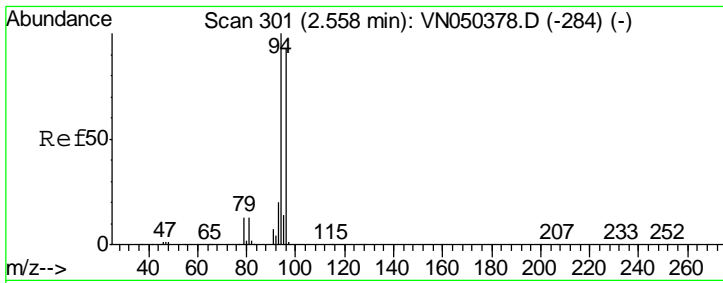
Tgt Ion: 168 Resp: 721461
 Ion Ratio Lower Upper
 168 100
 99 52.1 40.0 60.0



#3
 Chloromethane
 Concen: Below Cal
 RT: 2.05 min Scan# 144
 Delta R.T. -0.01 min
 Lab File: VN050479.D
 Acq: 9 Aug 2018 12:33

Tgt Ion: 50 Resp: 7904
 Ion Ratio Lower Upper
 50 100
 52 33.7 25.9 38.9

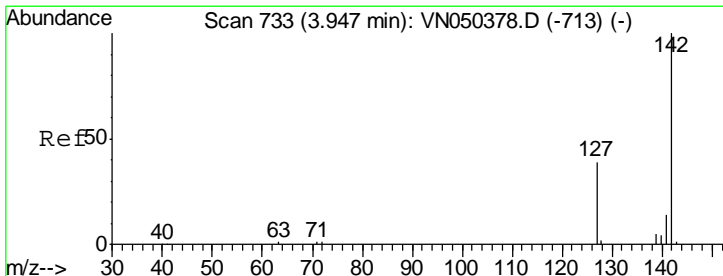
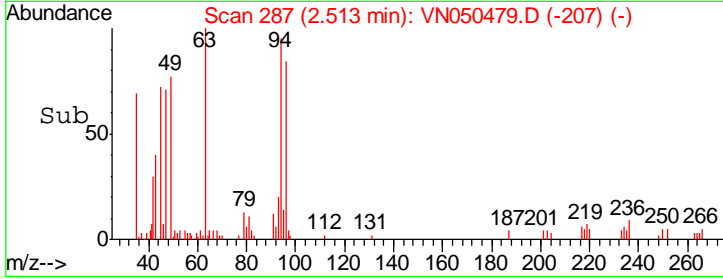
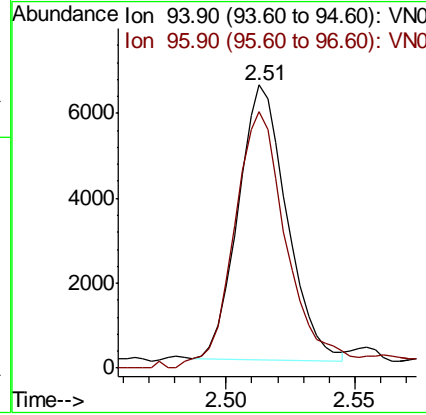
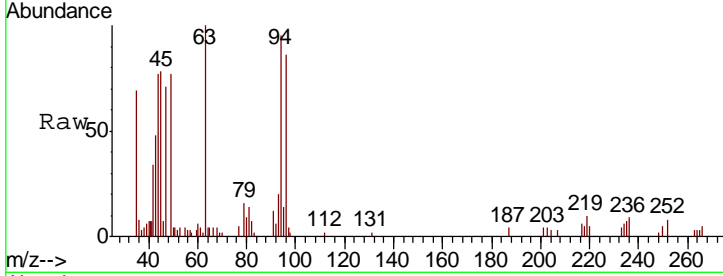




#5
 Bromomethane
 Concen: 1.85 ug/l
 RT: 2.51 min Scan# 287
 Delta R.T. -0.04 min
 Lab File: VN050479.D
 Acq: 9 Aug 2018 12:33

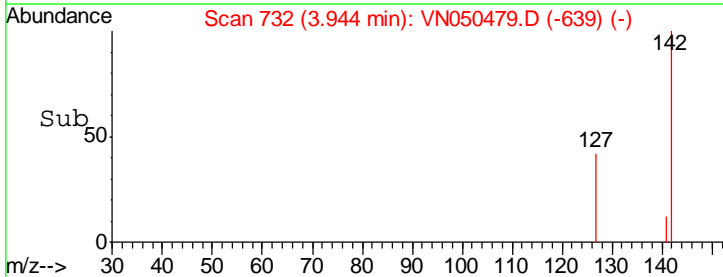
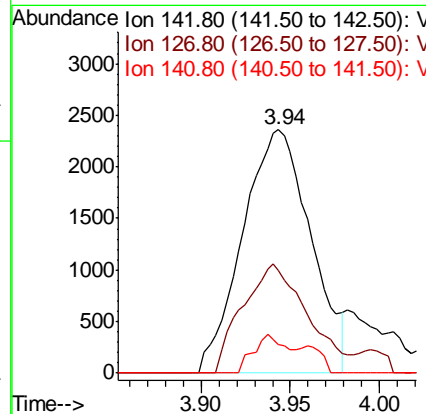
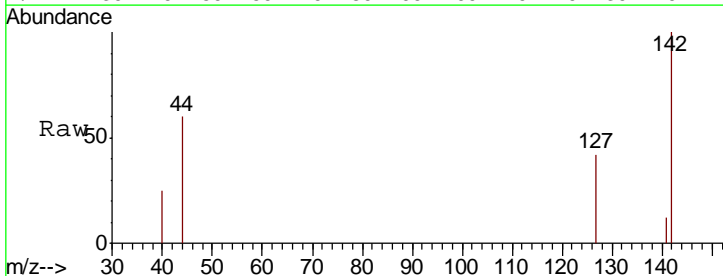
Instrument :
 MSVOA_N
 ClientSampled :

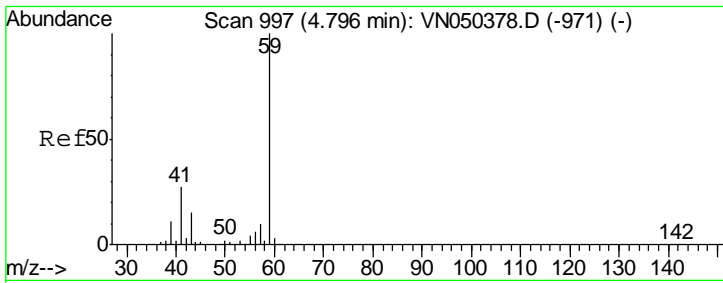
Tgt Ion	Resp	Lower	Upper
94	100		
96	90.5	74.6	112.0



#10
 Methyl Iodide
 Concen: 1.72 ug/l
 RT: 3.94 min Scan# 732
 Delta R.T. -0.00 min
 Lab File: VN050479.D
 Acq: 9 Aug 2018 12:33

Tgt Ion	Resp	Lower	Upper
142	100		
127	42.6	33.4	50.2
141	8.0	11.6	17.4#

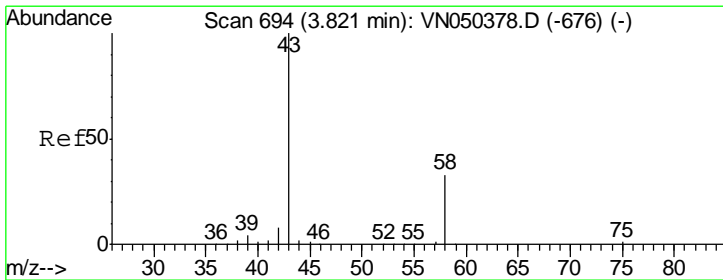
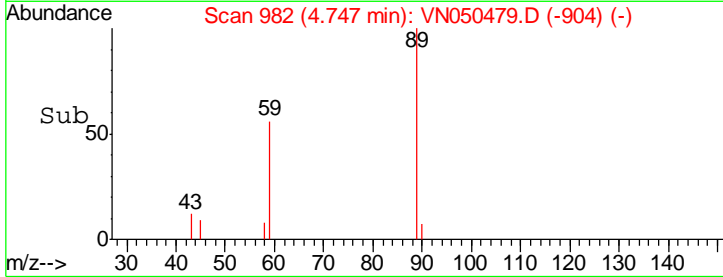
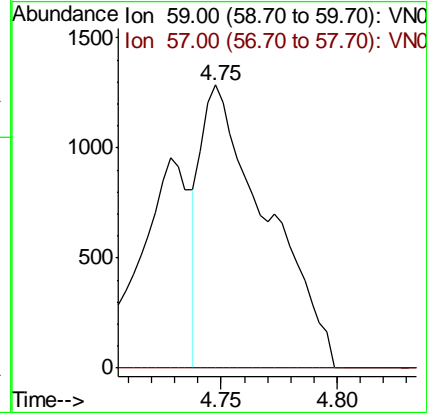
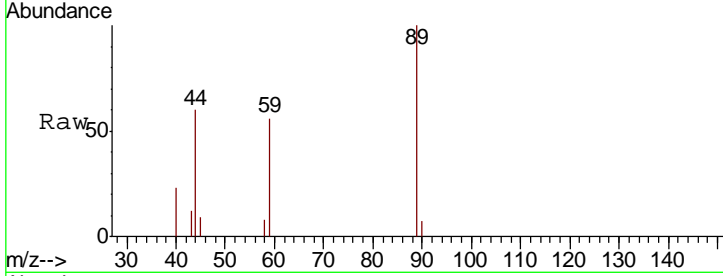




#11
 Tert butyl alcohol
 Concen: 3.27 ug/l
 RT: 4.75 min Scan# 982
 Delta R.T. -0.05 min
 Lab File: VN050479.D
 Acq: 9 Aug 2018 12:33

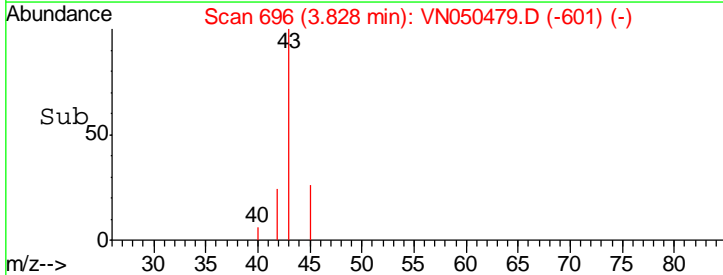
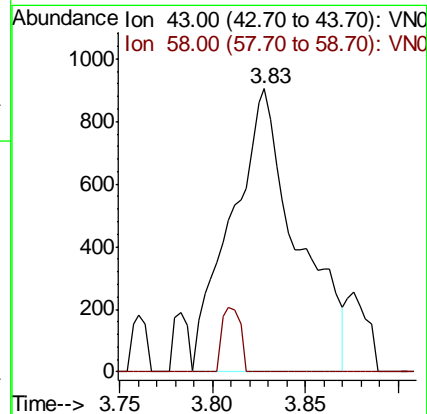
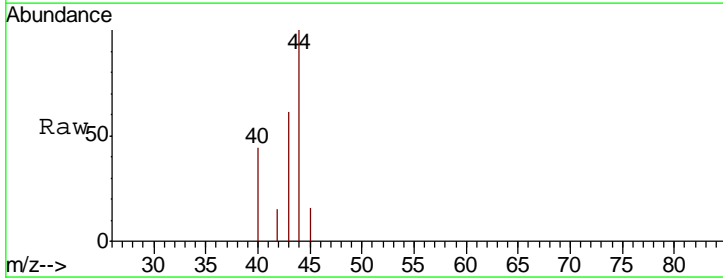
Instrument :
 MSVOA_N
 ClientSampled :

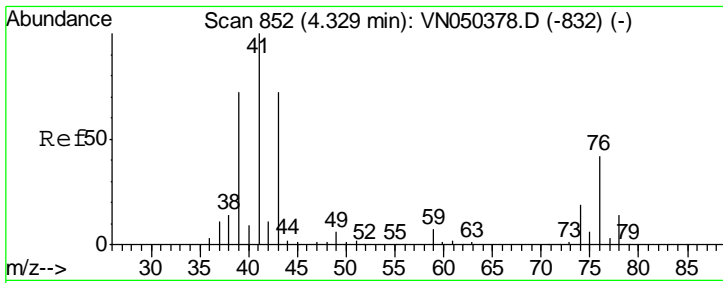
Tgt Ion: 59 Resp: 2536
 Ion Ratio Lower Upper
 59 100
 57 0.0 8.5 12.7#



#16
 Acetone
 Concen: 0.42 ug/l
 RT: 3.83 min Scan# 696
 Delta R.T. 0.01 min
 Lab File: VN050479.D
 Acq: 9 Aug 2018 12:33

Tgt Ion: 43 Resp: 2227
 Ion Ratio Lower Upper
 43 100
 58 0.0 25.8 38.8#

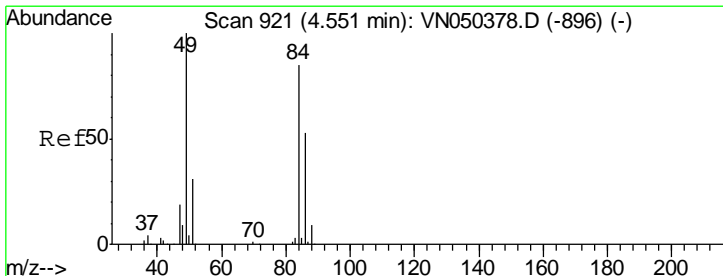
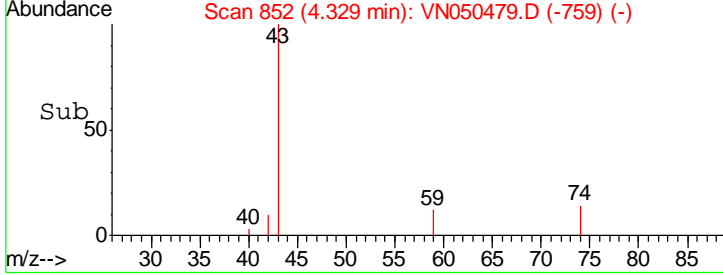
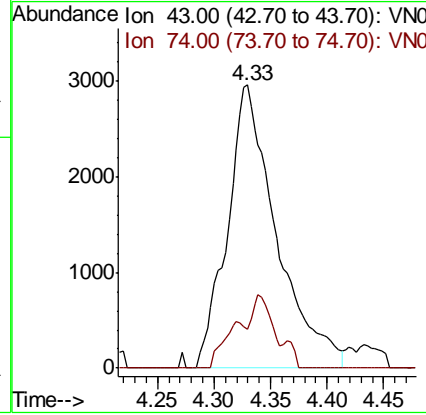
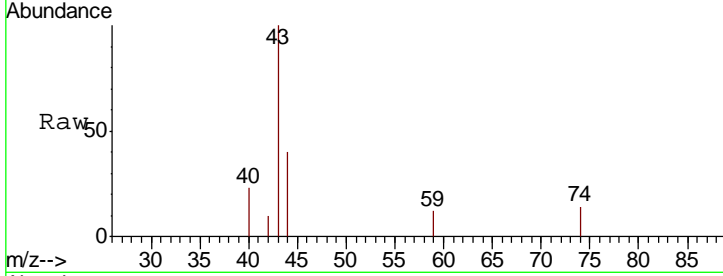




#18
 Methyl Acetate
 Concen: 1.00 ug/l
 RT: 4.33 min Scan# 852
 Delta R.T. 0.00 min
 Lab File: VN050479.D
 Acq: 9 Aug 2018 12:33

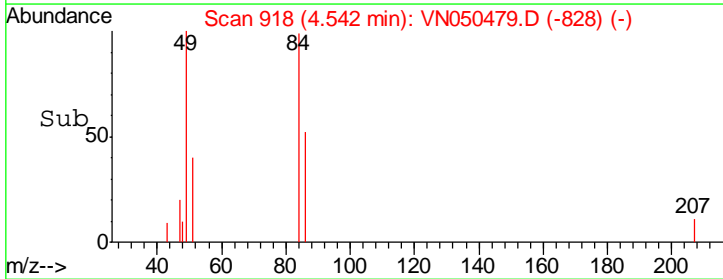
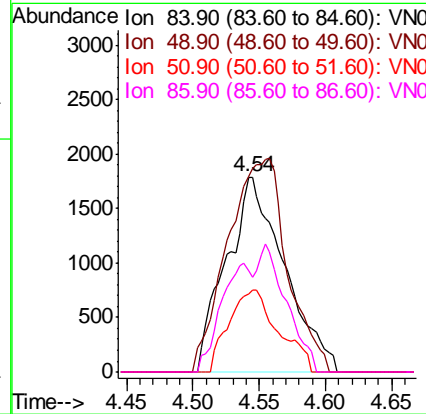
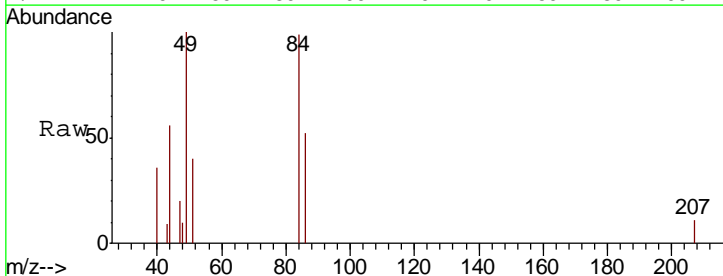
Instrument :
 MSVOA_N
 ClientSampled :

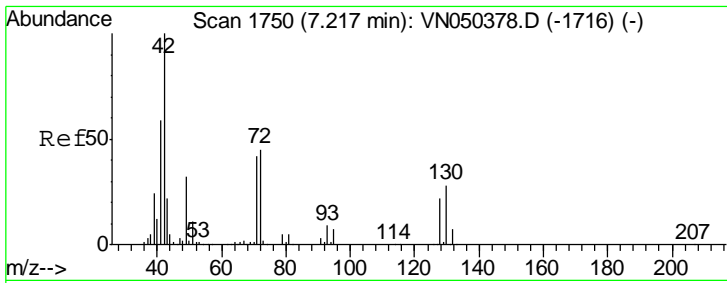
Tgt Ion	Resp	Lower	Upper
43	100		
74	7.8	19.2	28.8#



#20
 Methylene Chloride
 Concen: Below Cal
 RT: 4.54 min Scan# 918
 Delta R.T. -0.01 min
 Lab File: VN050479.D
 Acq: 9 Aug 2018 12:33

Tgt Ion	Resp	Lower	Upper
84	100		
49	100.7	94.8	142.2
51	40.4	28.3	42.5
86	51.8	51.0	76.6

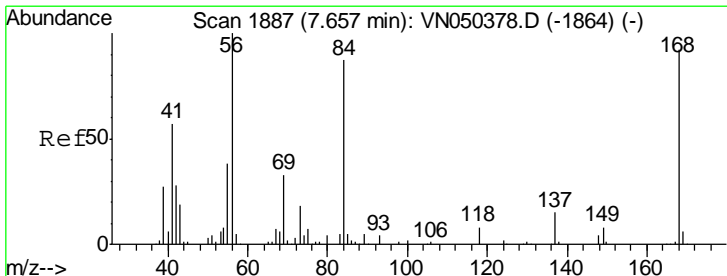
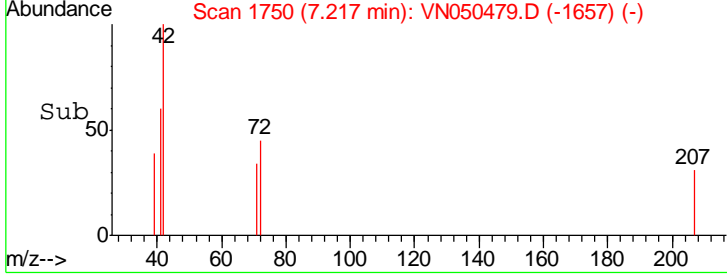
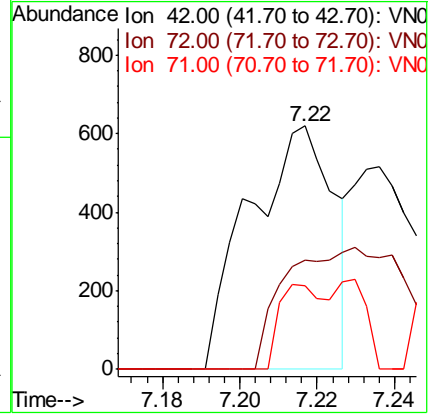
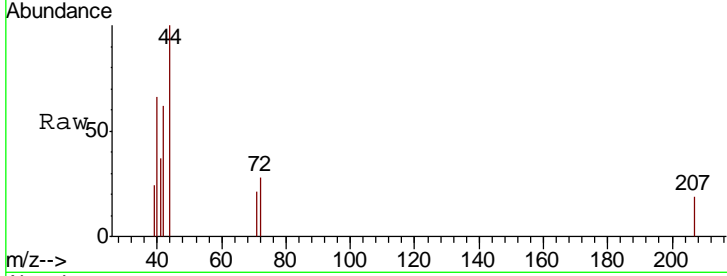




#29
 Tetrahydrofuran
 Concen: 0.37 ug/l
 RT: 7.22 min Scan# 1750
 Delta R.T. -0.00 min
 Lab File: VN050479.D
 Acq: 9 Aug 2018 12:33

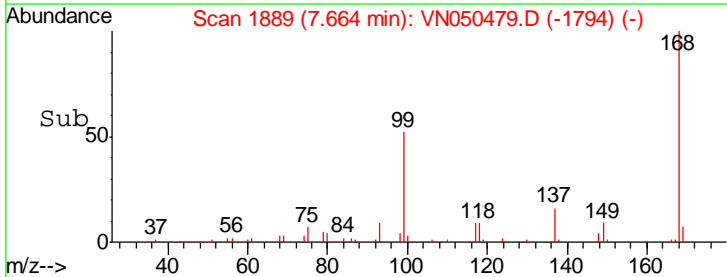
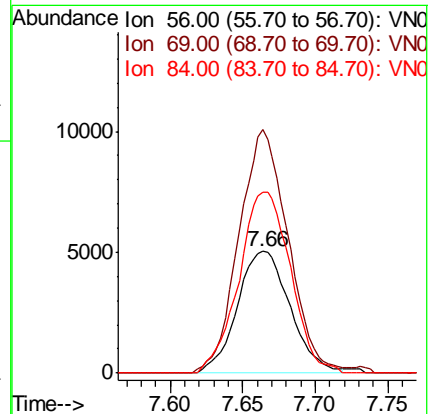
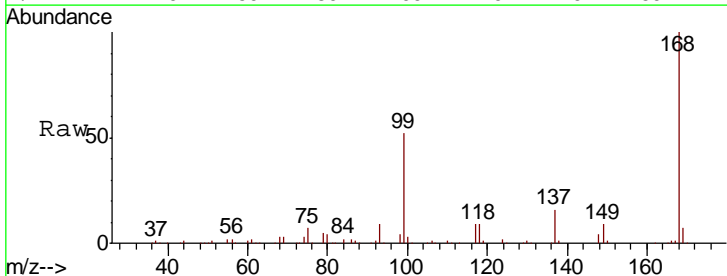
Instrument :
 MSVOA_N
 ClientSampled :

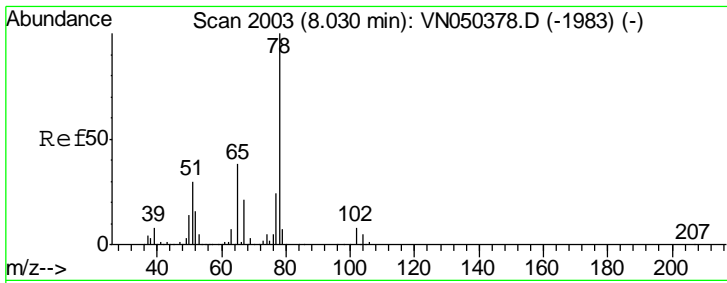
Tgt Ion	Resp	Lower	Upper
42	100		
72	0.0	35.9	53.9#
71	19.7	33.7	50.5#



#31
 Cyclohexane
 Concen: 0.30 ug/l
 RT: 7.66 min Scan# 1889
 Delta R.T. 0.01 min
 Lab File: VN050479.D
 Acq: 9 Aug 2018 12:33

Tgt Ion	Resp	Lower	Upper
56	100		
69	200.1	26.2	39.4#
84	148.6	67.4	101.0#

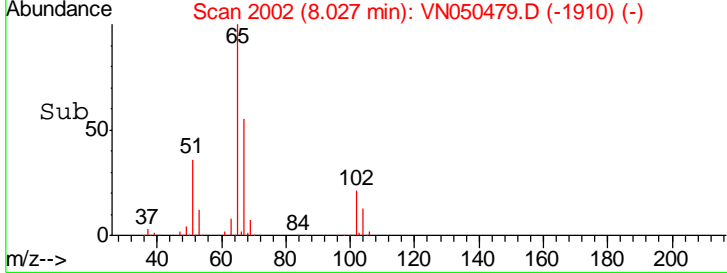
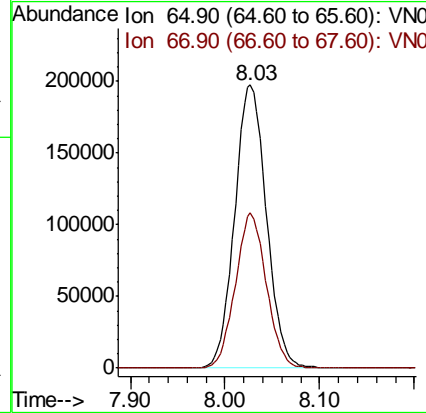
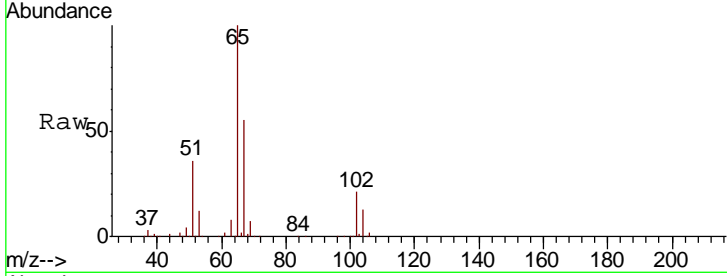




#33
 1,2-Dichloroethane-d4
 Concen: 47.80 ug/l
 RT: 8.03 min Scan# 2002
 Delta R.T. -0.00 min
 Lab File: VN050479.D
 Acq: 9 Aug 2018 12:33

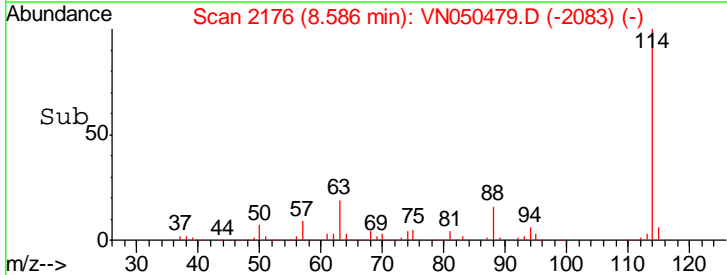
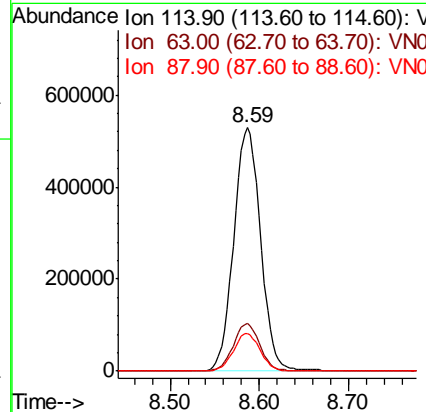
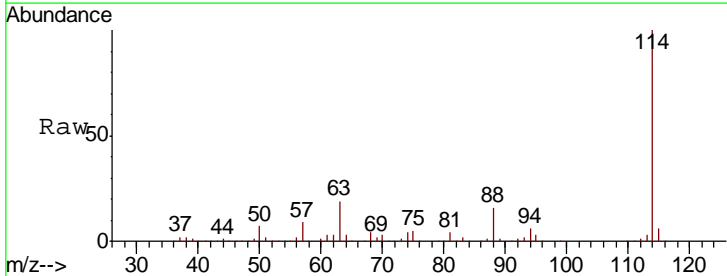
Instrument :
 MSVOA_N
 ClientSampled :

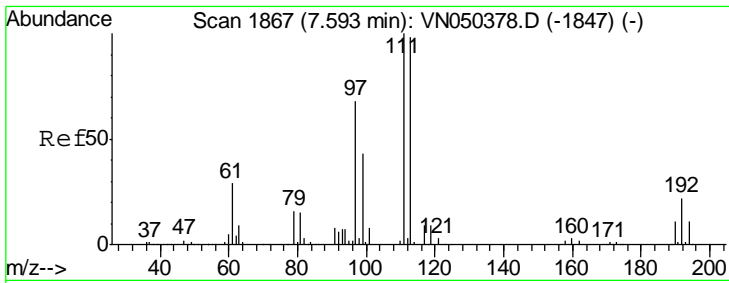
Tgt Ion	Resp	Lower	Upper
65	100		
67	53.5	0.0	108.4



#34
 1,4-Difluorobenzene
 Concen: 50.00 ug/l
 RT: 8.59 min Scan# 2176
 Delta R.T. -0.00 min
 Lab File: VN050479.D
 Acq: 9 Aug 2018 12:33

Tgt Ion	Resp	Lower	Upper
114	100		
63	19.4	0.0	40.0
88	15.5	0.0	31.2

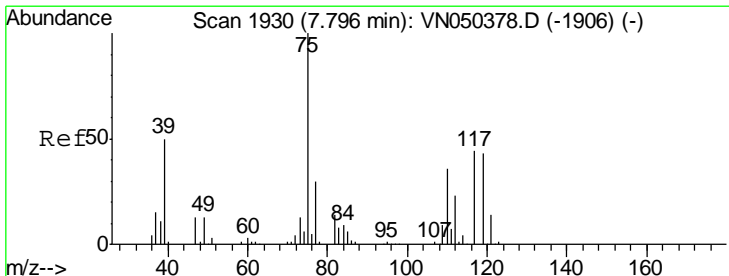
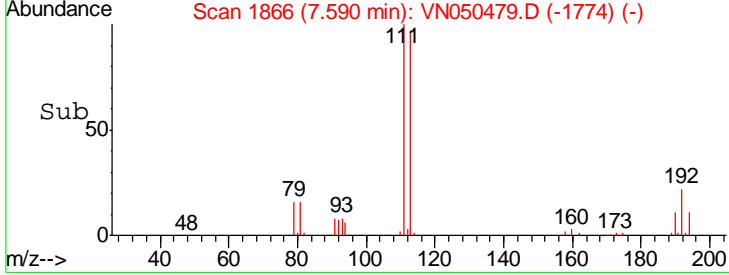
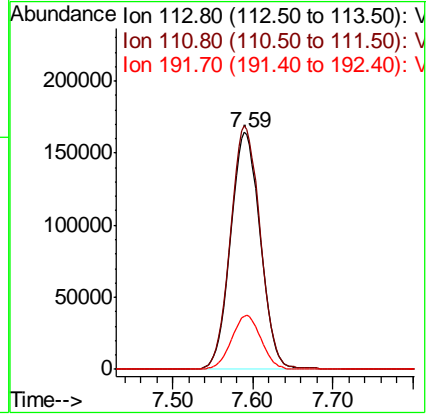
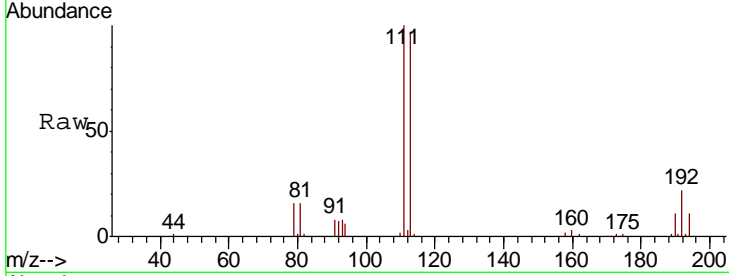




#35
 Dibromofluoromethane
 Concen: 46.74 ug/l
 RT: 7.59 min Scan# 1866
 Delta R.T. -0.00 min
 Lab File: VN050479.D
 Acq: 9 Aug 2018 12:33

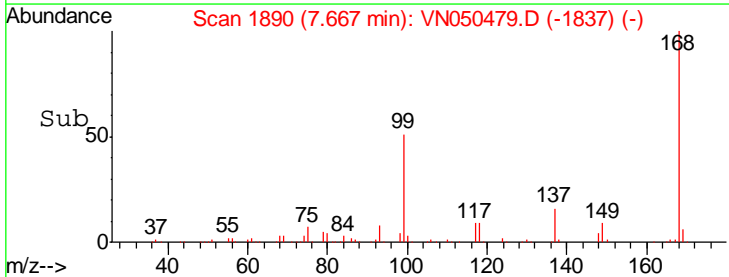
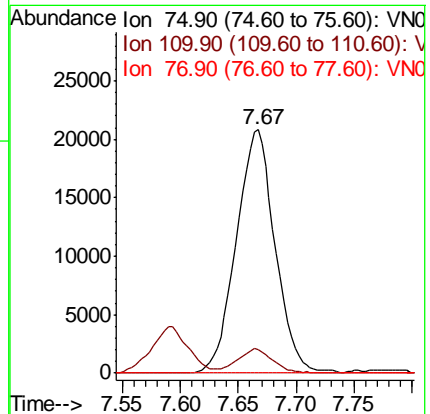
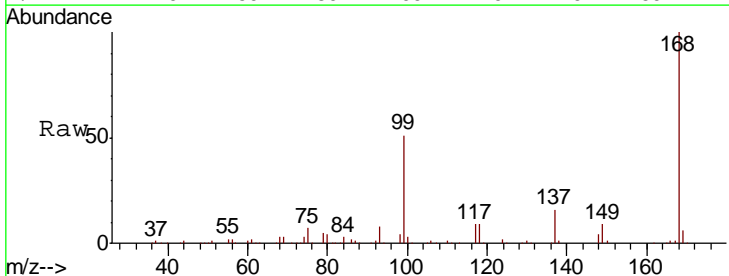
Instrument :
 MSVOA_N
 ClientSampled :

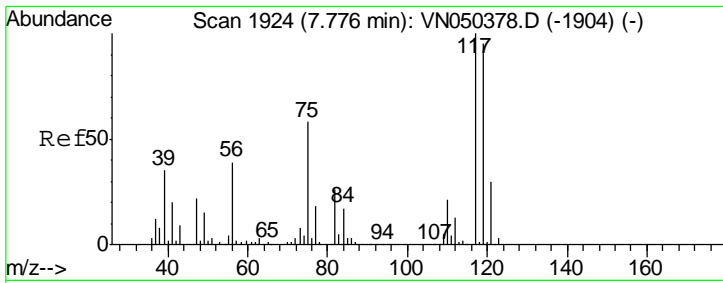
Tgt Ion	Resp	Lower	Upper
113	100		
111	102.9	80.7	121.1
192	22.7	17.8	26.6



#36
 1,1-Dichloropropene
 Concen: 3.98 ug/l
 RT: 7.67 min Scan# 1890
 Delta R.T. -0.13 min
 Lab File: VN050479.D
 Acq: 9 Aug 2018 12:33

Tgt Ion	Resp	Lower	Upper
75	100		
110	9.0	18.4	55.2#
77	0.0	25.3	37.9#

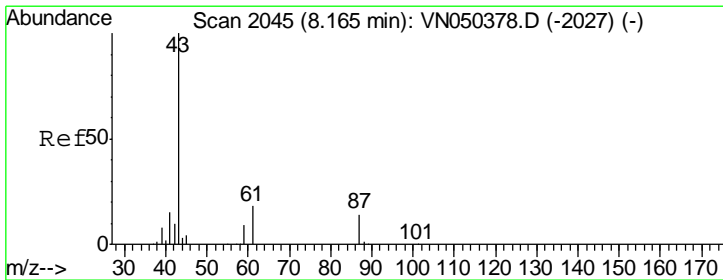
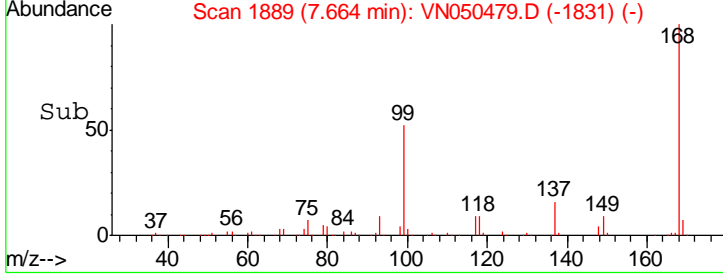
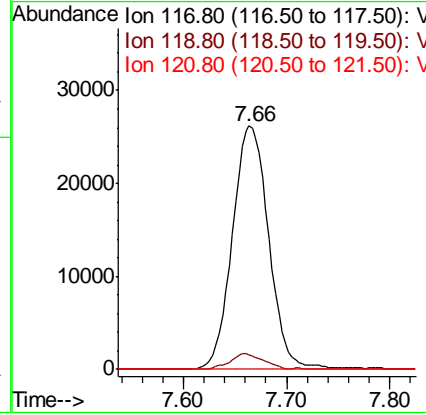
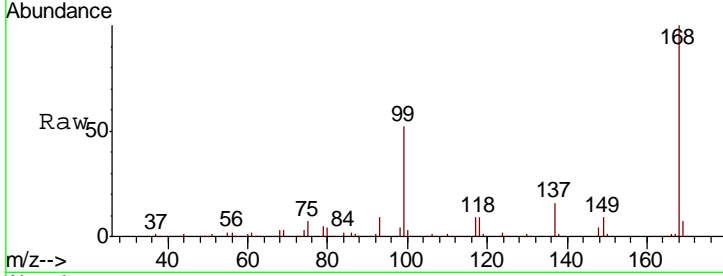




#38
 Carbon Tetrachloride
 Concen: 5.06 ug/l
 RT: 7.66 min Scan# 1889
 Delta R.T. -0.11 min
 Lab File: VN050479.D
 Acq: 9 Aug 2018 12:33

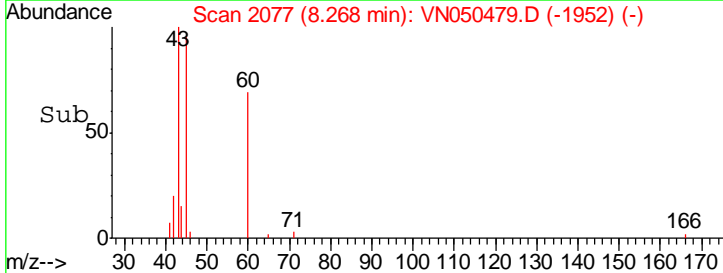
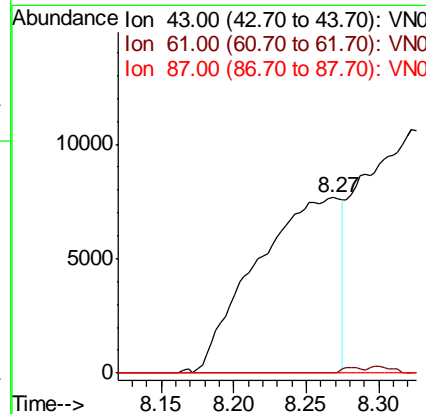
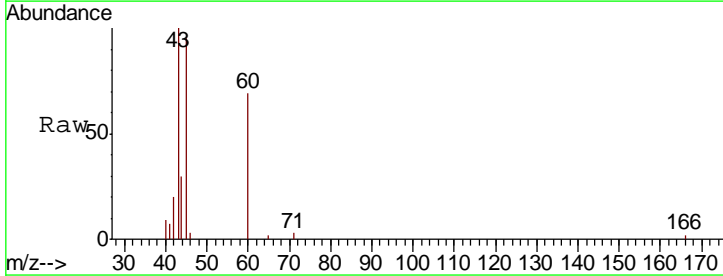
Instrument :
 MSVOA_N
 ClientSampled :

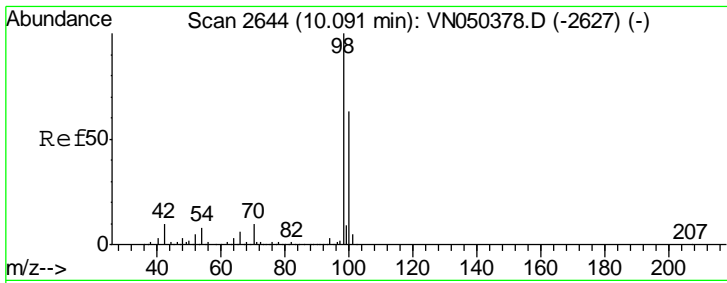
Tgt Ion	Resp	Lower	Upper
117	100		
119	6.0	77.4	116.0#
121	0.0	23.9	35.9#



#43
 Isopropyl Acetate
 Concen: 2.05 ug/l
 RT: 8.27 min Scan# 2077
 Delta R.T. 0.10 min
 Lab File: VN050479.D
 Acq: 9 Aug 2018 12:33

Tgt Ion	Resp	Lower	Upper
43	100		
61	0.0	15.8	23.6#
87	0.0	10.3	15.5#



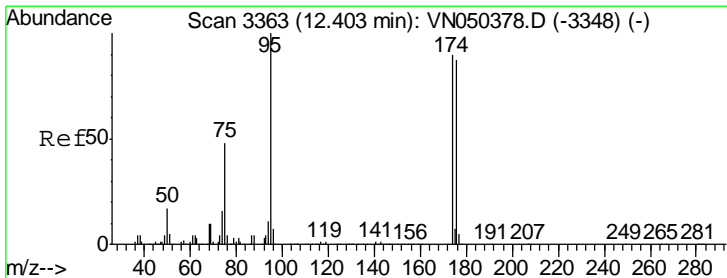
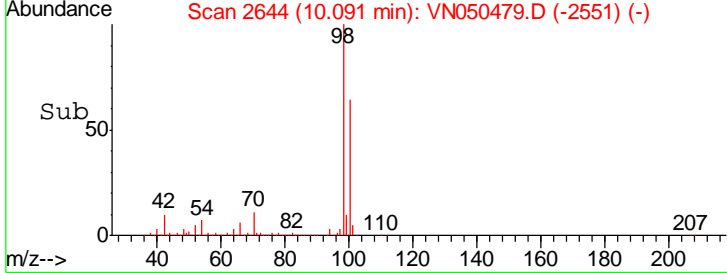
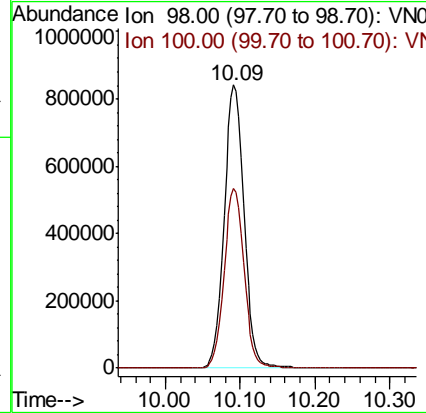
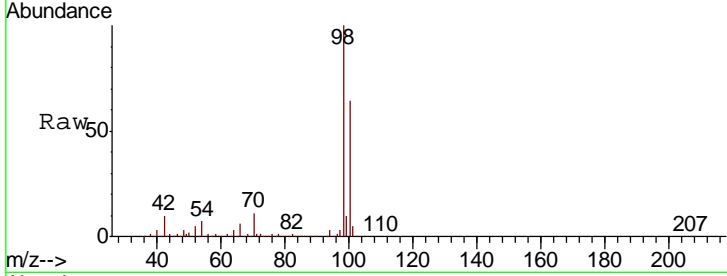


#50
 Toluene-d8
 Concen: 46.39 ug/l
 RT: 10.09 min Scan# 2644
 Delta R.T. -0.00 min
 Lab File: VN050479.D
 Acq: 9 Aug 2018 12:33

Instrument :
 MSVOA_N
 ClientSampled :

Tgt Ion: 98 Resp: 1545973

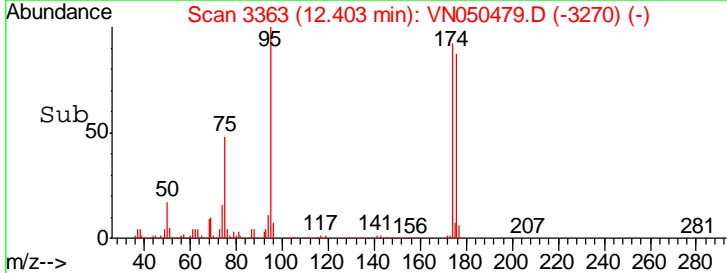
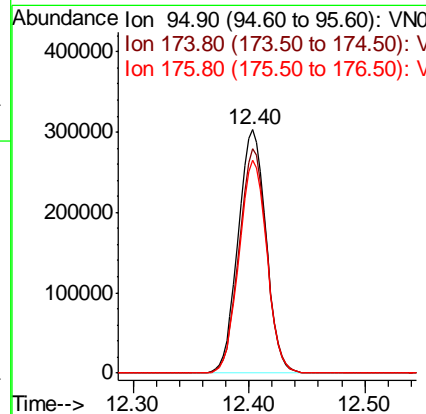
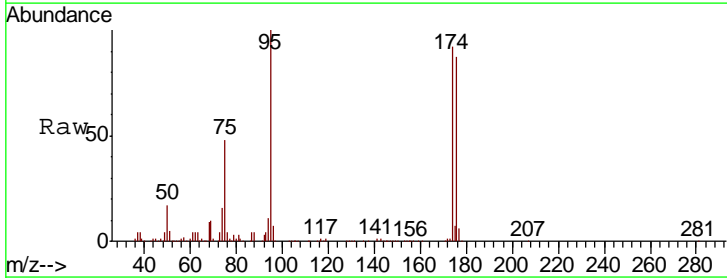
Ion	Ratio	Lower	Upper
98	100		
100	63.8	50.7	76.1

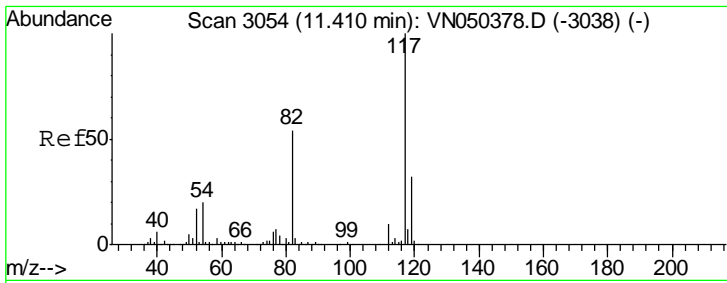


#62
 4-Bromofluorobenzene
 Concen: 44.26 ug/l
 RT: 12.40 min Scan# 3363
 Delta R.T. -0.00 min
 Lab File: VN050479.D
 Acq: 9 Aug 2018 12:33

Tgt Ion: 95 Resp: 502805

Ion	Ratio	Lower	Upper
95	100		
174	91.5	0.0	178.2
176	87.4	0.0	173.4



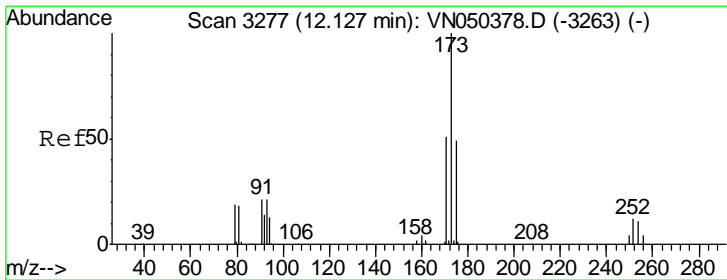
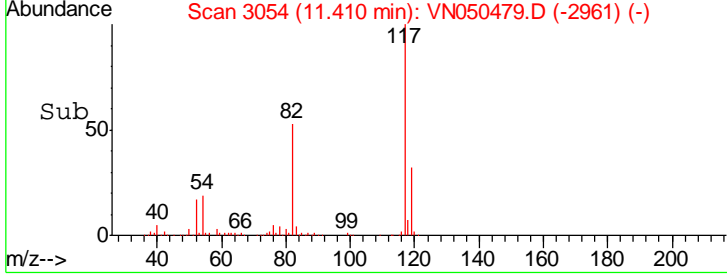
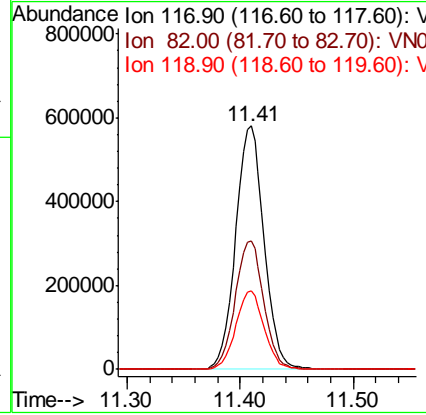
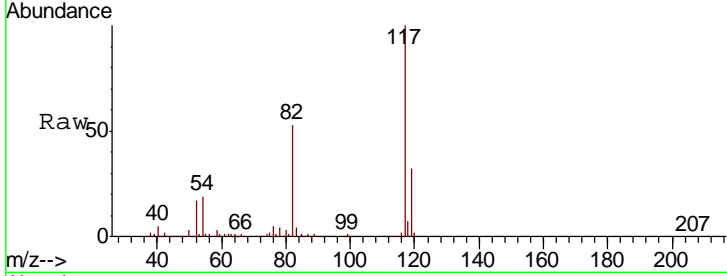


#63
 Chlorobenzene-d5
 Concen: 50.00 ug/l
 RT: 11.41 min Scan# 3054
 Delta R.T. -0.00 min
 Lab File: VN050479.D
 Acq: 9 Aug 2018 12:33

Instrument :
 MSVOA_N
 ClientSampled :

Tgt Ion:117 Resp: 1010839

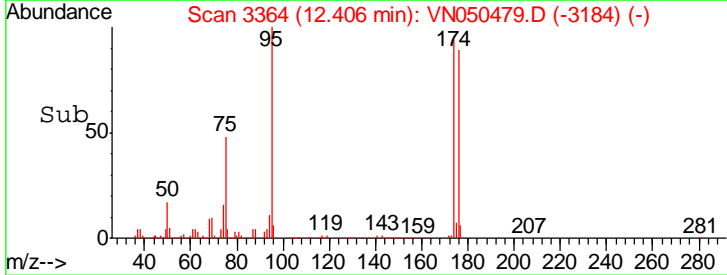
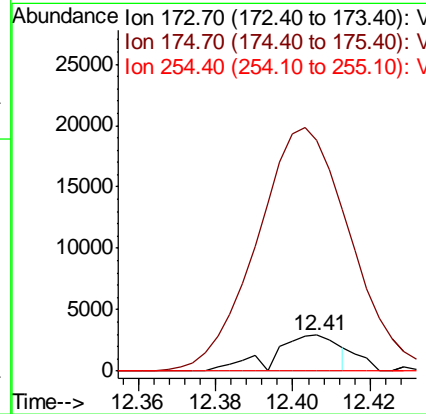
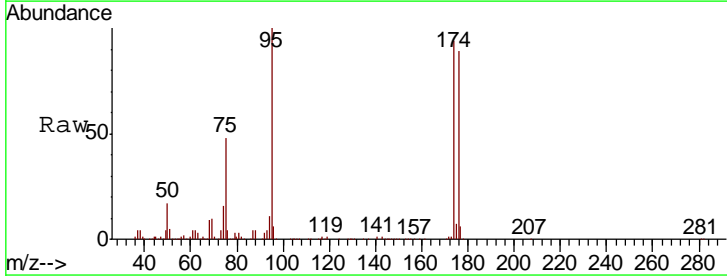
Ion	Ratio	Lower	Upper
117	100		
82	52.8	43.7	65.5
119	32.2	26.1	39.1

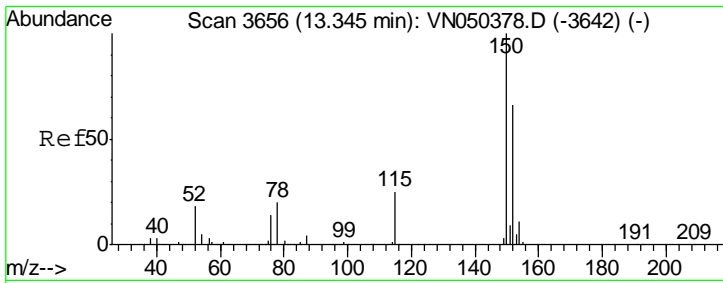


#71
 Bromoform
 Concen: 0.51 ug/l
 RT: 12.41 min Scan# 3364
 Delta R.T. 0.28 min
 Lab File: VN050479.D
 Acq: 9 Aug 2018 12:33

Tgt Ion:173 Resp: 3443

Ion	Ratio	Lower	Upper
173	100		
175	816.9	24.1	72.2#
254	0.0	0.2	0.2#

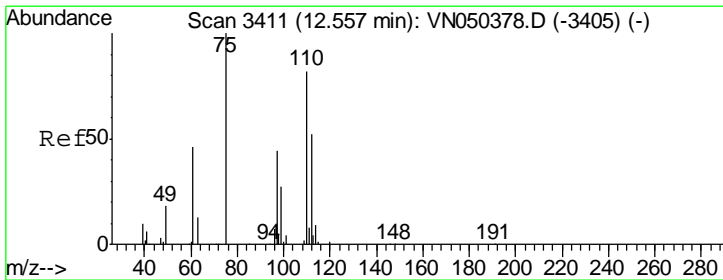
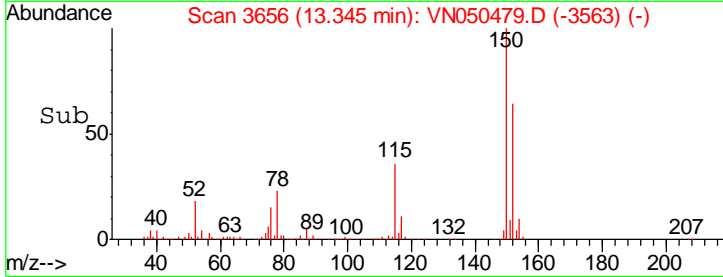
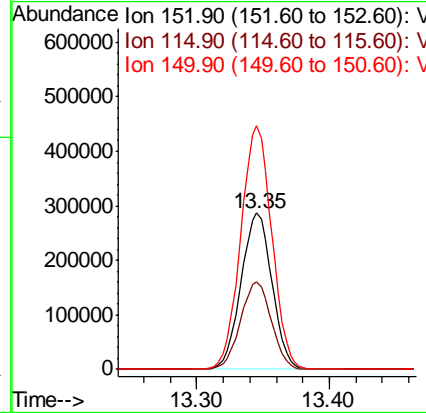
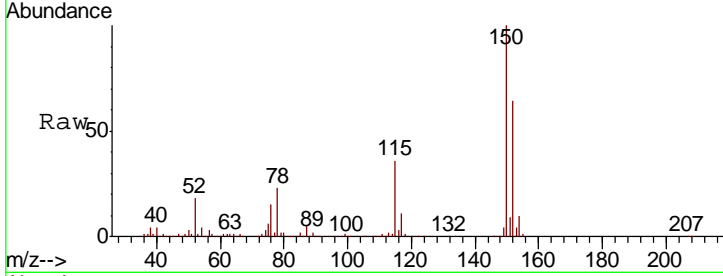




#72
 1,4-Dichlorobenzene-d4
 Concen: 50.00 ug/l
 RT: 13.35 min Scan# 3656
 Delta R.T. -0.00 min
 Lab File: VN050479.D
 Acq: 9 Aug 2018 12:33

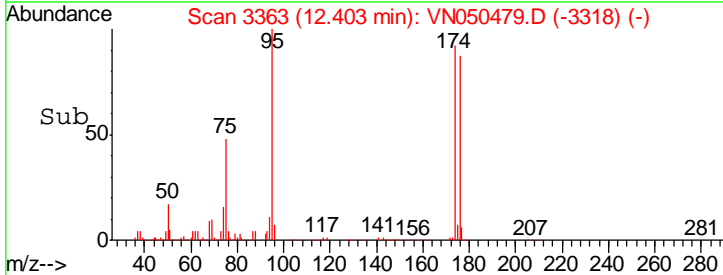
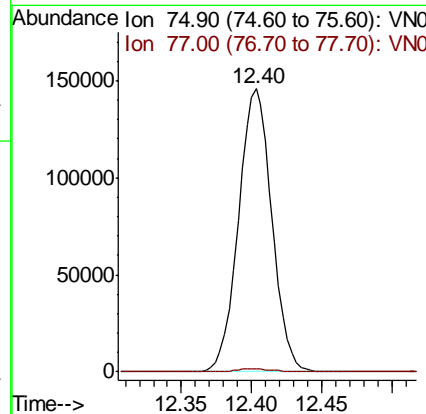
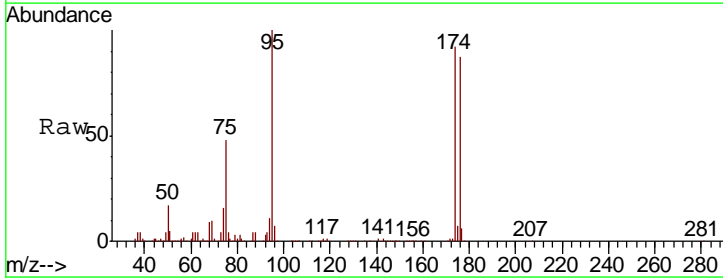
Instrument : MSVOA_N
 ClientSampled :

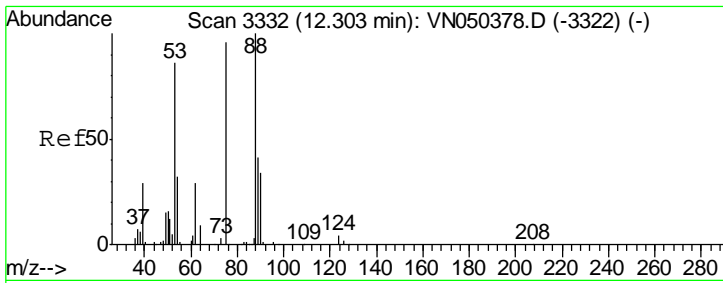
Tgt Ion	Resp	Lower	Upper
152	100		
115	55.9	27.8	83.3
150	156.1	0.0	348.6



#76
 1,2,3-Trichloropropane
 Concen: 28.63 ug/l
 RT: 12.40 min Scan# 3363
 Delta R.T. -0.15 min
 Lab File: VN050479.D
 Acq: 9 Aug 2018 12:33

Tgt Ion	Resp	Lower	Upper
75	100		
77	1.3	0.0	0.0#

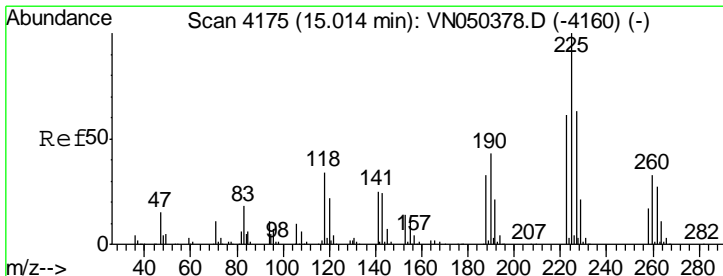
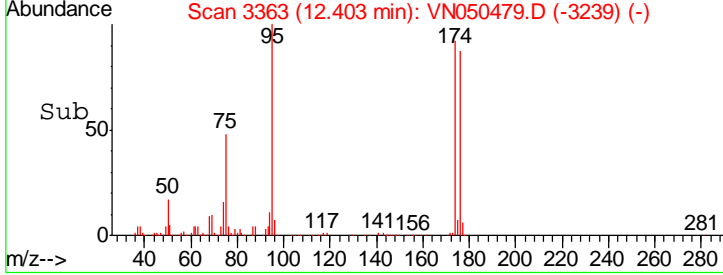
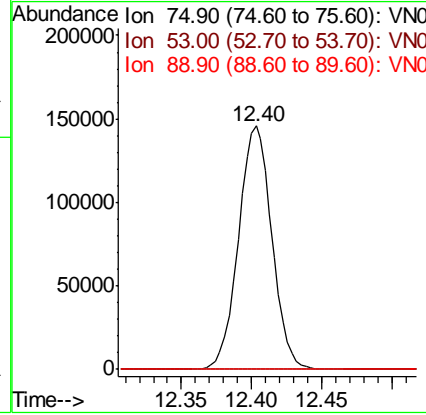
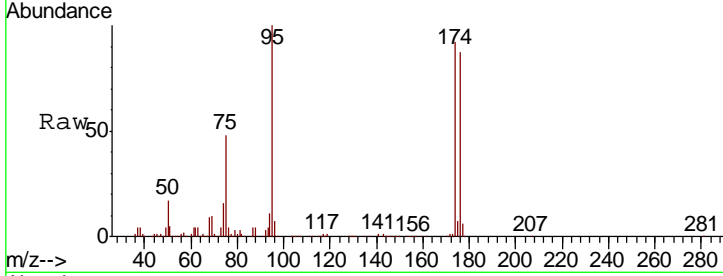




#81
 trans-1,4-Dichloro-2-butene
 Concen: 100.59 ug/l
 RT: 12.40 min Scan# 3363
 Delta R.T. 0.10 min
 Lab File: VN050479.D
 Acq: 9 Aug 2018 12:33

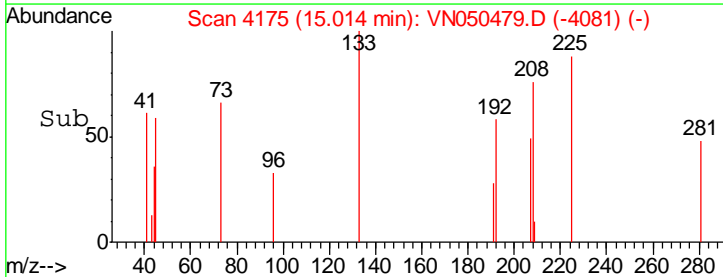
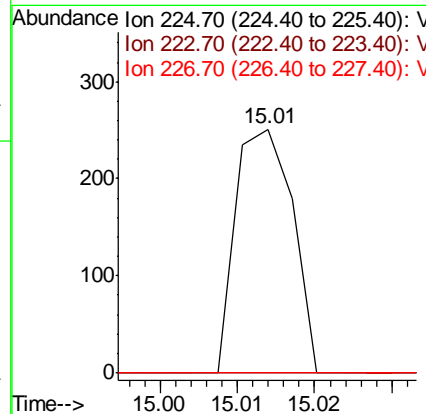
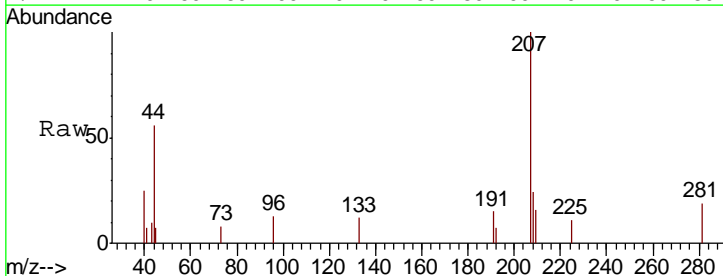
Instrument :
 MSVOA_N
 ClientSampled :

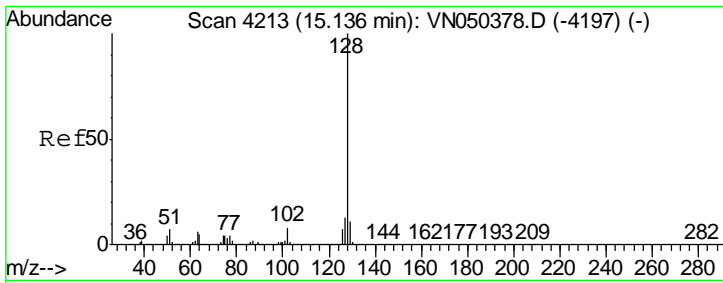
Tgt Ion	Resp	Lower	Upper
75	100		
53	0.1	73.5	110.3#
89	0.0	36.0	54.0#



#94
 Hexachlorobutadiene
 Concen: Below Cal
 RT: 15.01 min Scan# 4175
 Delta R.T. 0.00 min
 Lab File: VN050479.D
 Acq: 9 Aug 2018 12:33

Tgt Ion	Resp	Lower	Upper
225	100		
223	0.0	31.4	94.2#
227	0.0	32.1	96.5#





#95
 Naphthalene
 Concen: 3.68 ug/l
 RT: 15.14 min Scan# 4213
 Delta R.T. 0.00 min
 Lab File: VN050479.D
 Acq: 9 Aug 2018 12:33

Instrument : MSVOA_N
 ClientSampled :

Tot Ion	Ratio	Lower	Upper
128	100		
127	6.2	10.4	15.6#
129	0.0	8.8	13.2#

