

Data Path : Z:\VOASRV\HPCHEM1\MSVOA N\DATA\VN080918\
 Data File : VN050495.D
 Acq On : 9 Aug 2018 19:10
 Operator : MD\SY
 Sample : J4271-04
 Misc : 5.00mL/MSVOA N/WATER
 ALS Vial : 21 Sample Multiplier: 1

Instrument :
 MSVOA_N
 ClientSampled :

Quant Time: Aug 10 04:06:27 2018
 Quant Method : Z:\VOASRV\HPCHEM1\MSVOA_N\METHODS\82N080618W.M
 Quant Title : SW846 8260
 QLast Update : Tue Aug 07 05:22:15 2018
 Response via : Initial Calibration

Internal Standards	R.T.	QIon	Response	Conc	Units	Dev(Min)
1) Pentafluorobenzene	7.67	168	733779	50.00	ug/l	0.00
34) 1,4-Difluorobenzene	8.59	114	1175626	50.00	ug/l	0.00
63) Chlorobenzene-d5	11.41	117	1018689	50.00	ug/l	0.00
72) 1,4-Dichlorobenzene-d4	13.35	152	386423	50.00	ug/l	0.00

System Monitoring Compounds

33) 1,2-Dichloroethane-d4	8.03	65	488988	49.88	ug/l	0.00
Spiked Amount	50.000		Recovery	=	99.76%	
35) Dibromofluoromethane	7.59	113	448140	47.51	ug/l	0.00
Spiked Amount	50.000		Recovery	=	95.02%	
50) Toluene-d8	10.09	98	1609708	45.39	ug/l	0.00
Spiked Amount	50.000		Recovery	=	90.78%	
62) 4-Bromofluorobenzene	12.40	95	461796	38.20	ug/l	0.00
Spiked Amount	50.000		Recovery	=	76.40%	

Target Compounds

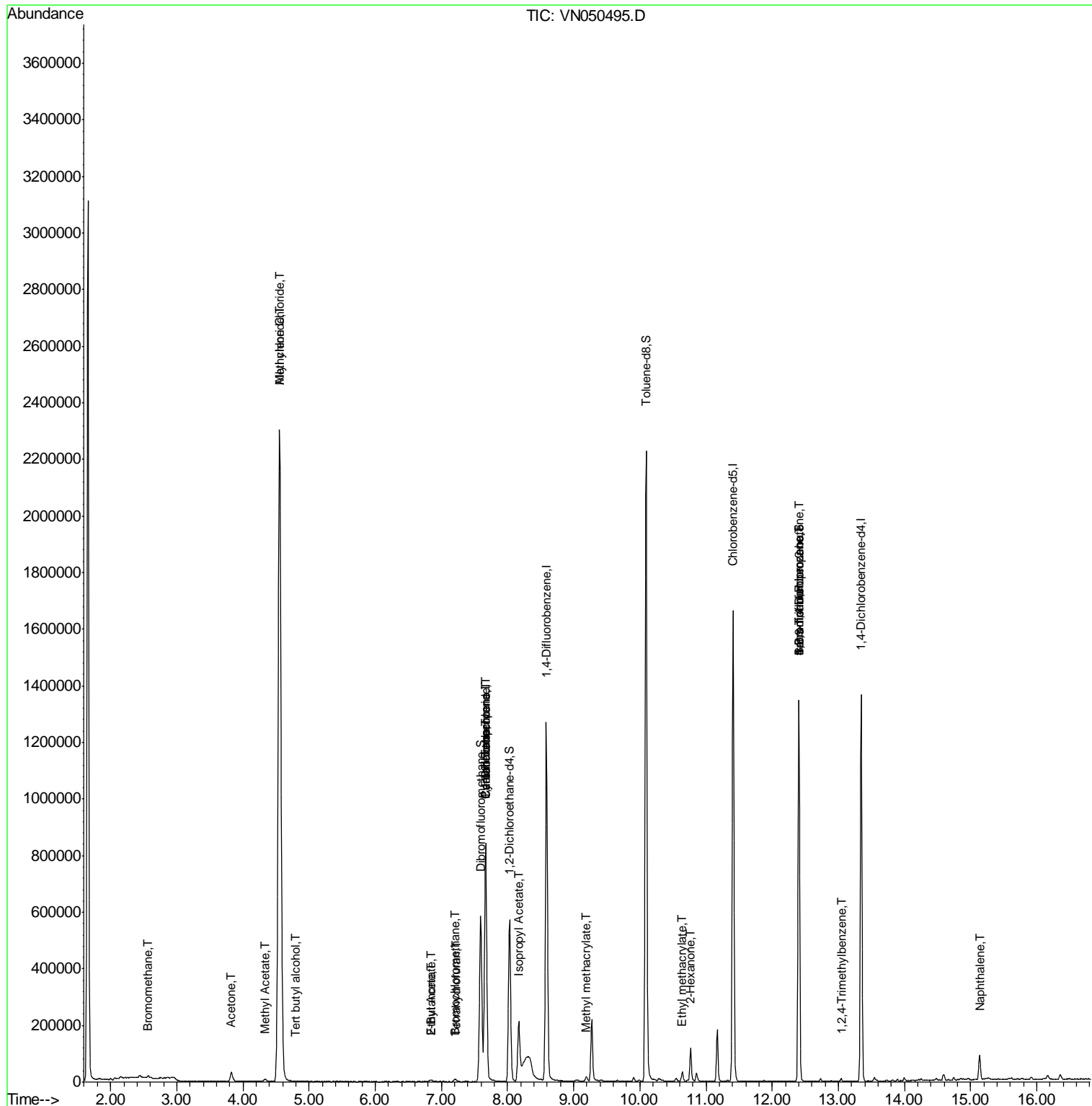
						Qvalue
3) Chloromethane	2.06	50	3659	Below Cal		100
5) Bromomethane	2.57	94	4965	1.14	ug/l	86
11) Tert butyl alcohol	4.80	59	1047	1.33	ug/l #	72
14) Allyl chloride	4.55	41	61845	4.85	ug/l #	24
16) Acetone	3.82	43	54458	18.29	ug/l	99
18) Methyl Acetate	4.33	43	16558	1.99	ug/l	96
20) Methylene Chloride	4.55	84	1847489	211.63	ug/l	98
25) 2-Butanone	6.84	43	5311	1.09	ug/l	95
28) Bromochloromethane	7.20	49	5191	0.71	ug/l #	95
29) Tetrahydrofuran	7.24	42	1328	0.51	ug/l #	41
31) Cyclohexane	7.67	56	13747	0.35	ug/l #	1
36) 1,1-Dichloropropene	7.67	75	50077	3.88	ug/l #	48
37) Ethyl Acetate	6.84	43	5311	0.57	ug/l #	67
38) Carbon Tetrachloride	7.67	117	64791	4.81	ug/l #	16
43) Isopropyl Acetate	8.17	43	259503	16.16	ug/l	98
48) Methyl methacrylate	9.18	41	8828	1.10	ug/l #	21
56) Ethyl methacrylate	10.64	69	705	1.76	ug/l #	1
59) 2-Hexanone	10.77	43	15853	1.96	ug/l #	60
71) Bromoform	12.40	173	3552	0.52	ug/l #	1
76) 1,2,3-Trichloropropane	12.40	75	217808	31.14	ug/l #	100
81) trans-1,4-Dichloro-2-buten	12.40	75	217808	109.41	ug/l #	13
84) 1,2,4-Trimethylbenzene	13.04	105	5860	0.25	ug/l	94
95) Naphthalene	15.14	128	79046	7.54	ug/l	99

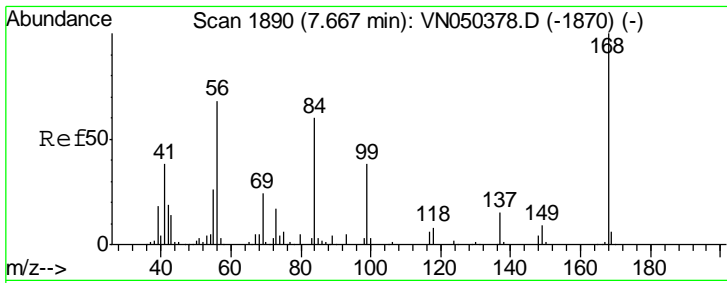
(#) = qualifier out of range (m) = manual integration (+) = signals summed

Data Path : Z:\VOASRV\HPCHEM1\MSVOA N\DATA\VN080918\
 Data File : VN050495.D
 Acq On : 9 Aug 2018 19:10
 Operator : MD\SY
 Sample : J4271-04
 Misc : 5.00mL/MSVOA N/WATER
 ALS Vial : 21 Sample Multiplier: 1

Instrument :
 MSVOA_N
 Client Sampled :

Quant Time: Aug 10 04:06:27 2018
 Quant Method : Z:\VOASRV\HPCHEM1\MSVOA_N\METHODS\82N080618W.M
 Quant Title : SW846 8260
 QLast Update : Tue Aug 07 05:22:15 2018
 Response via : Initial Calibration

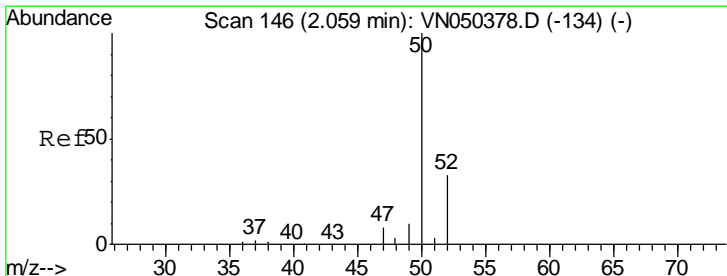
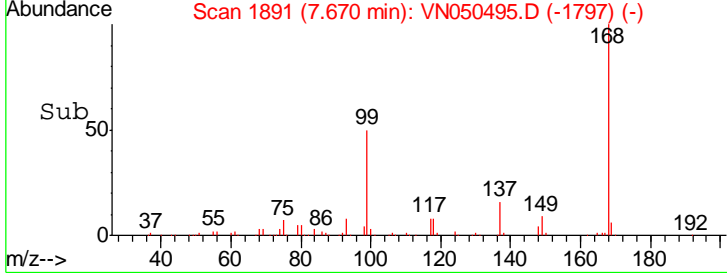
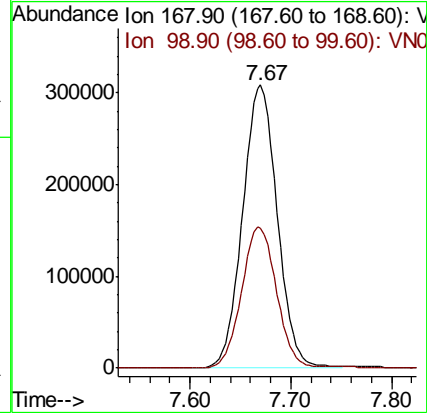
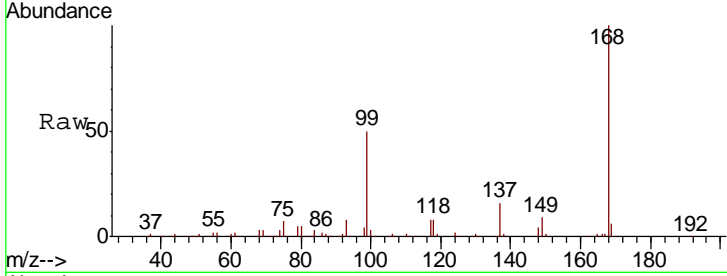




#1
 Pentafluorobenzene
 Concen: 50.00 ug/l
 RT: 7.67 min Scan# 1891
 Delta R.T. 0.00 min
 Lab File: VN050495.D
 Acq: 9 Aug 2018 19:10

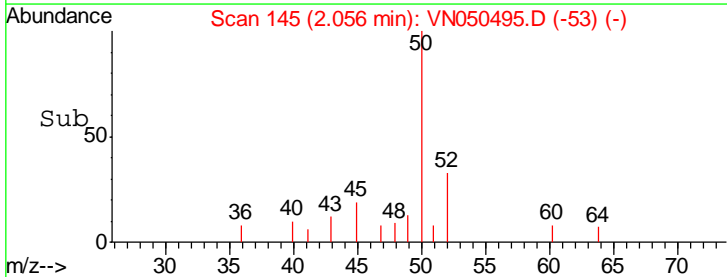
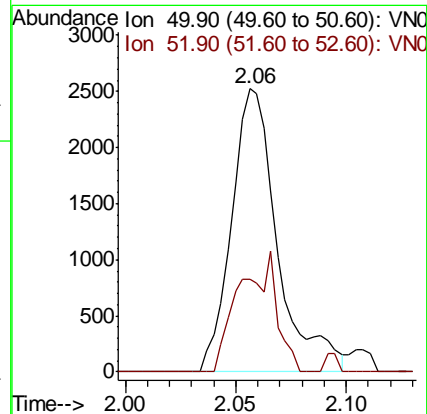
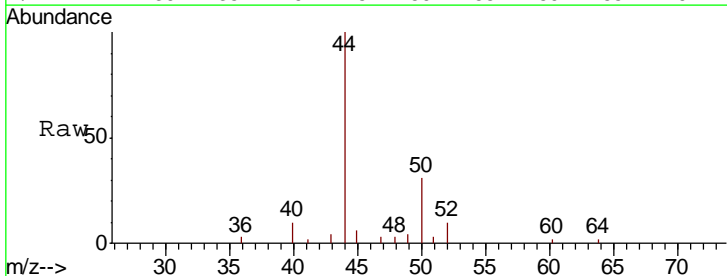
Instrument :
 MSVOA_N
 ClientSampled :

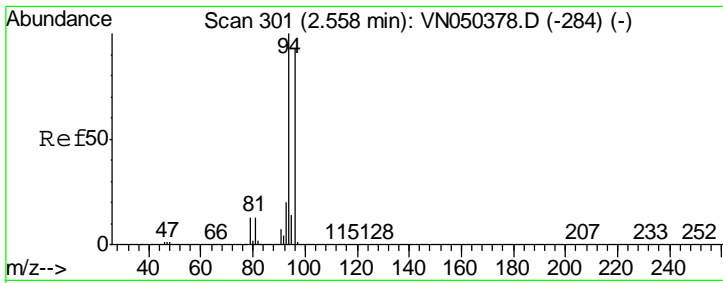
Tgt Ion	Resp	Lower	Upper
168	100		
99	49.5	40.0	60.0



#3
 Chloromethane
 Concen: Below Cal
 RT: 2.06 min Scan# 145
 Delta R.T. -0.00 min
 Lab File: VN050495.D
 Acq: 9 Aug 2018 19:10

Tgt Ion	Resp	Lower	Upper
50	100		
52	32.7	25.9	38.9

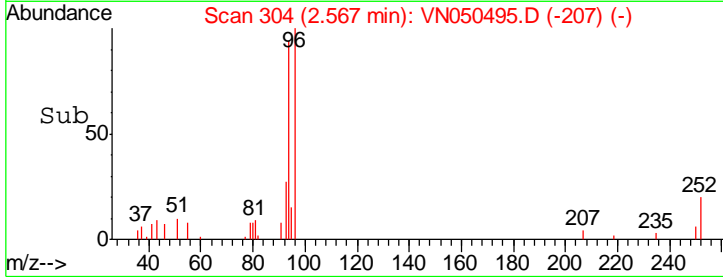
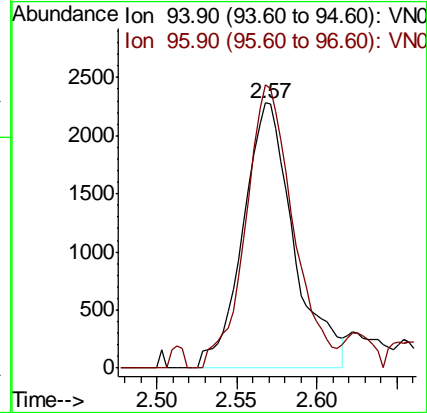
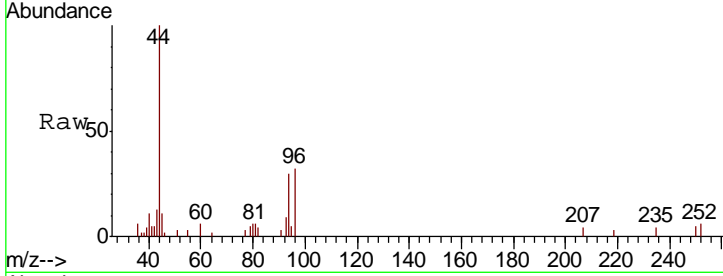




#5
 Bromomethane
 Concen: 1.14 ug/l
 RT: 2.57 min Scan# 304
 Delta R.T. 0.01 min
 Lab File: VN050495.D
 Acq: 9 Aug 2018 19:10

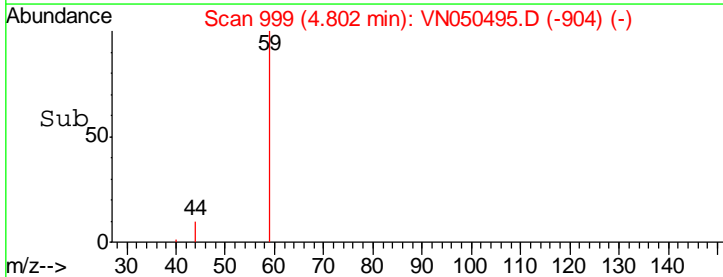
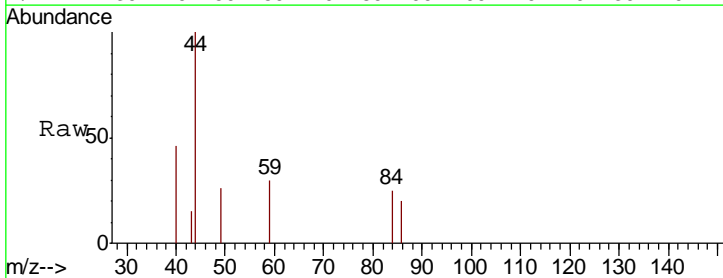
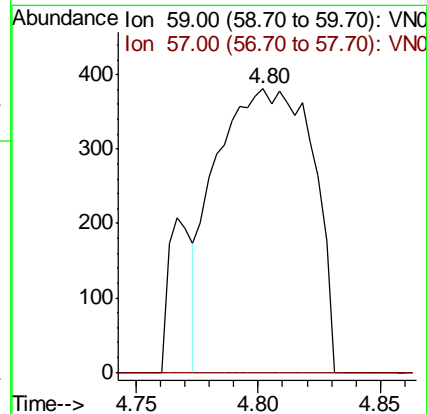
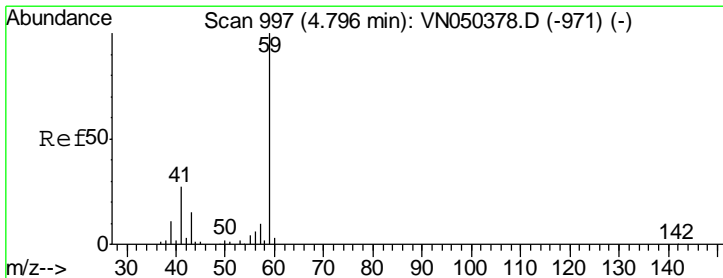
Instrument :
 MSVOA_N
 ClientSampled :

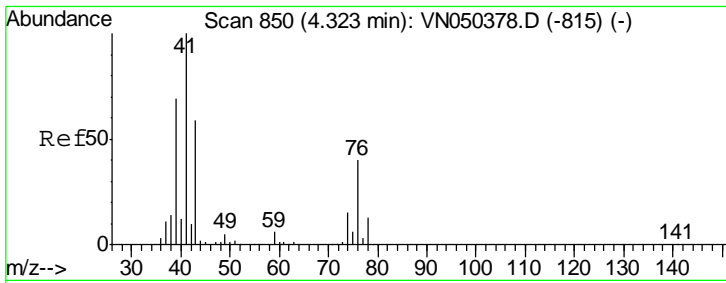
Tgt Ion	Resp	Lower	Upper
94	4965		
96	106.8	74.6	112.0



#11
 Tert butyl alcohol
 Concen: 1.33 ug/l
 RT: 4.80 min Scan# 999
 Delta R.T. 0.01 min
 Lab File: VN050495.D
 Acq: 9 Aug 2018 19:10

Tgt Ion	Resp	Lower	Upper
59	1047		
57	0.0	8.5	12.7#

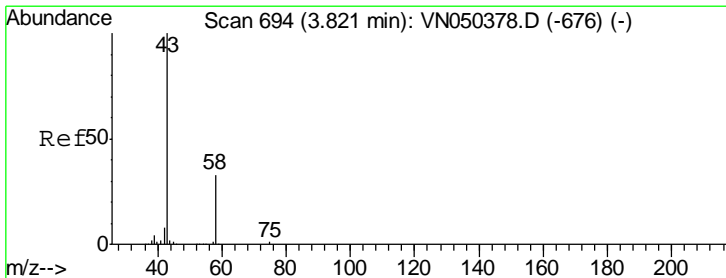
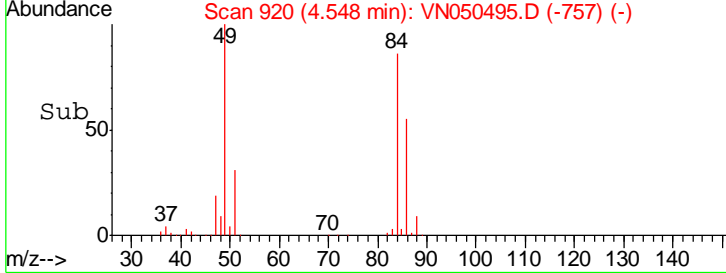
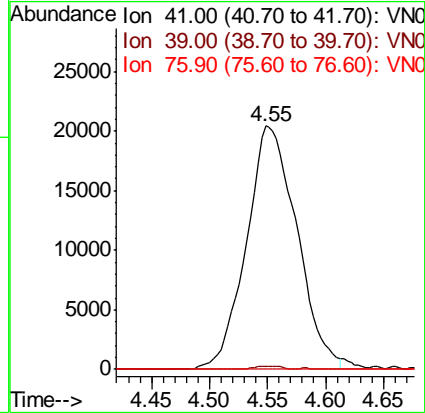
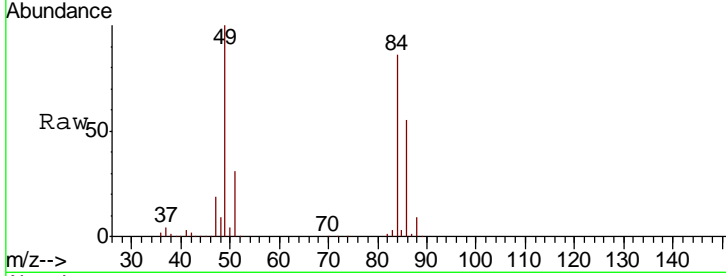




#14
 Allyl chloride
 Concen: 4.85 ug/l
 RT: 4.55 min Scan# 920
 Delta R.T. 0.23 min
 Lab File: VN050495.D
 Acq: 9 Aug 2018 19:10

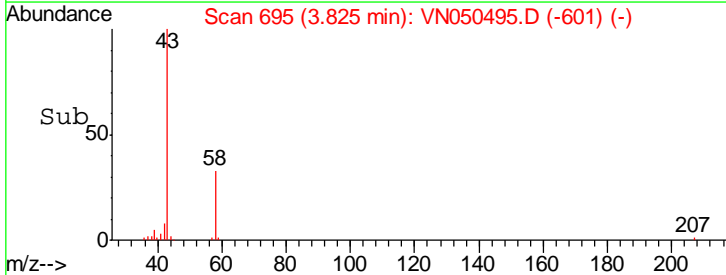
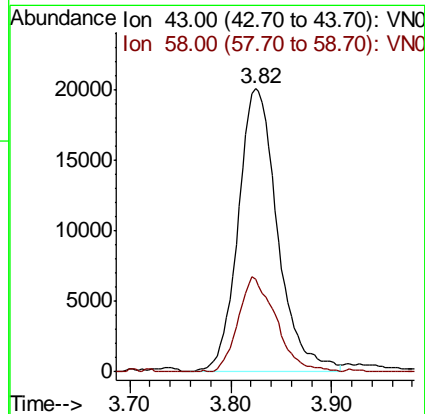
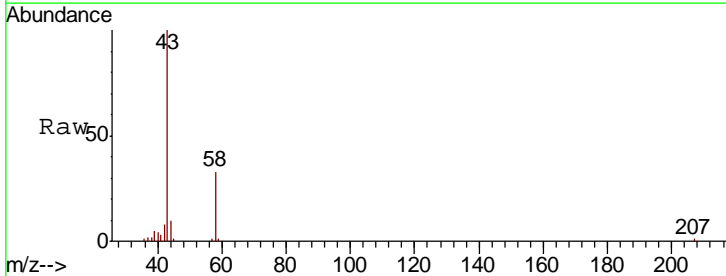
Instrument :
 MSVOA_N
 ClientSampled :

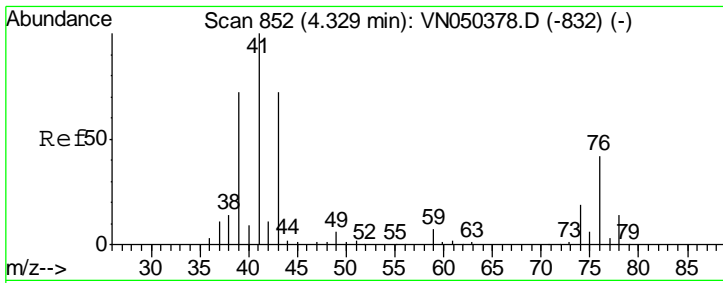
Tgt Ion	Resp	Lower	Upper
41	100		
39	0.7	54.2	81.4#
76	0.0	29.0	43.6#



#16
 Acetone
 Concen: 18.29 ug/l
 RT: 3.82 min Scan# 695
 Delta R.T. 0.00 min
 Lab File: VN050495.D
 Acq: 9 Aug 2018 19:10

Tgt Ion	Resp	Lower	Upper
43	100		
58	33.0	25.8	38.8

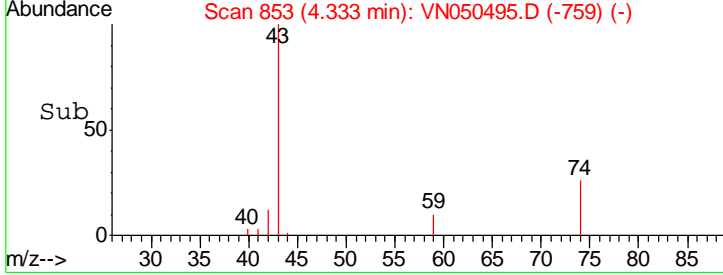
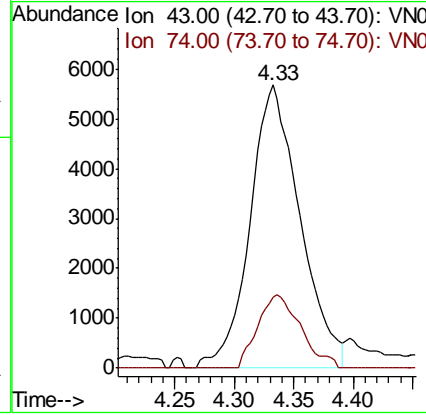
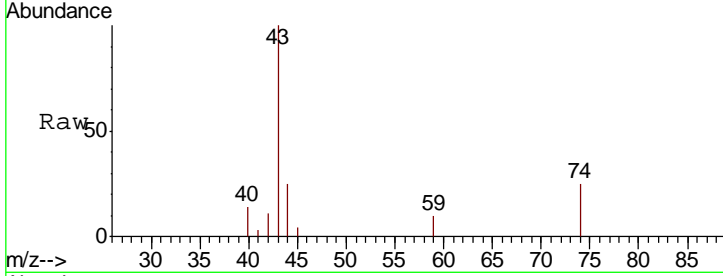




#18
 Methyl Acetate
 Concen: 1.99 ug/l
 RT: 4.33 min Scan# 853
 Delta R.T. 0.00 min
 Lab File: VN050495.D
 Acq: 9 Aug 2018 19:10

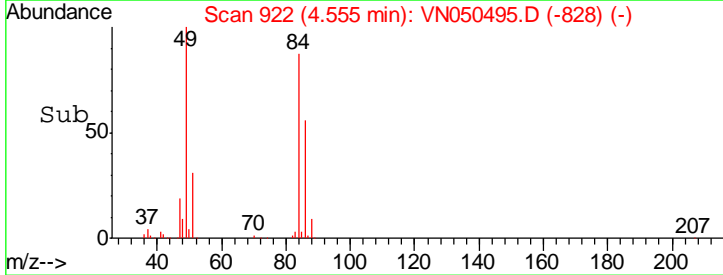
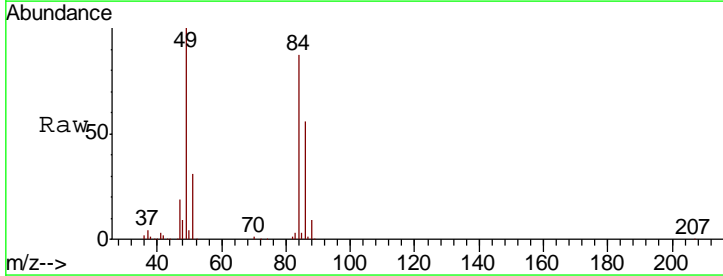
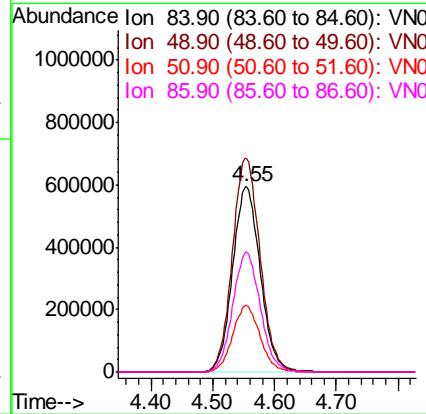
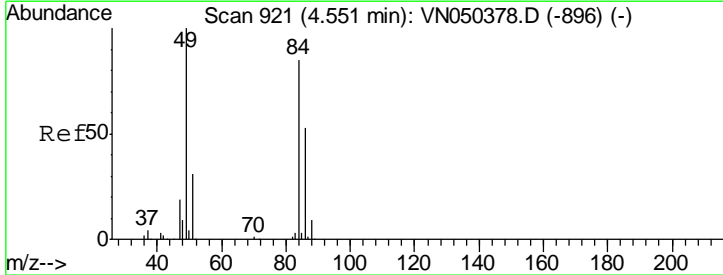
Instrument :
 MSVOA_N
 ClientSampled :

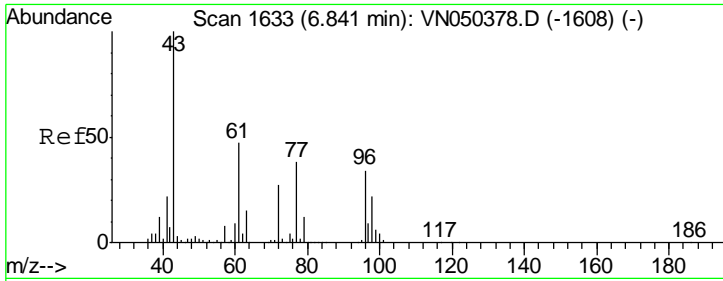
Tgt Ion	Resp	Lower	Upper
43	16558		
43	100		
74	22.1	19.2	28.8



#20
 Methylene Chloride
 Concen: 211.63 ug/l
 RT: 4.55 min Scan# 922
 Delta R.T. 0.00 min
 Lab File: VN050495.D
 Acq: 9 Aug 2018 19:10

Tgt Ion	Resp	Lower	Upper
84	1847489		
84	100		
49	115.2	94.8	142.2
51	35.8	28.3	42.5
86	64.7	51.0	76.6

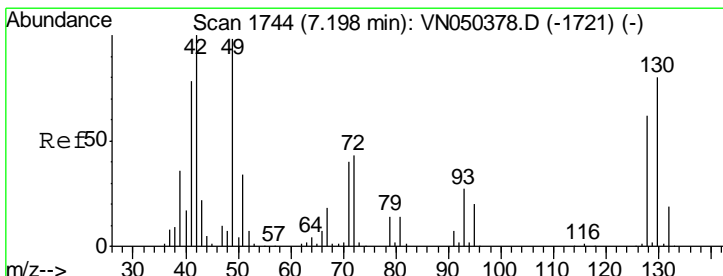
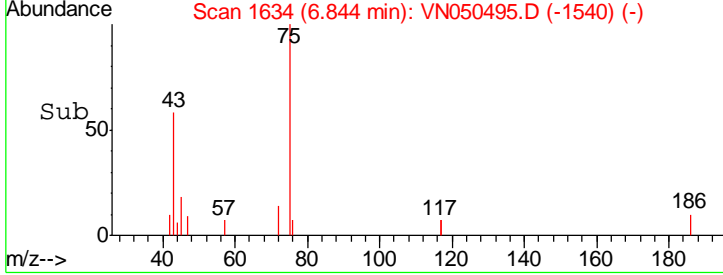
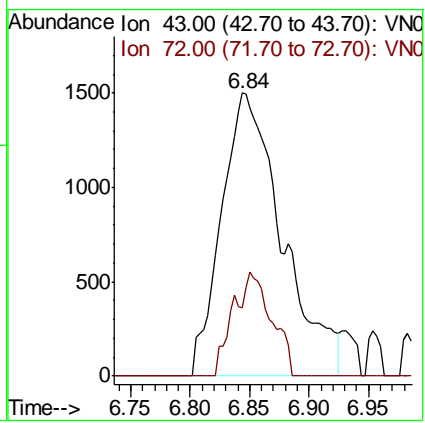
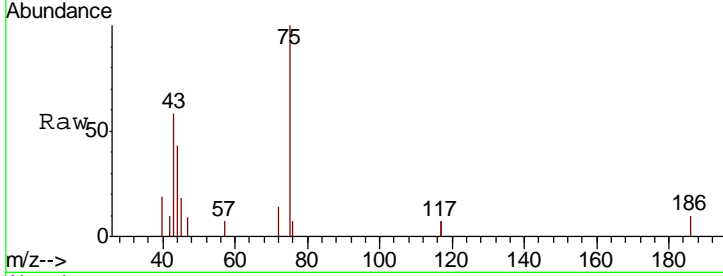




#25
 2-Butanone
 Concen: 1.09 ug/l
 RT: 6.84 min Scan# 1634
 Delta R.T. 0.00 min
 Lab File: VN050495.D
 Acq: 9 Aug 2018 19:10

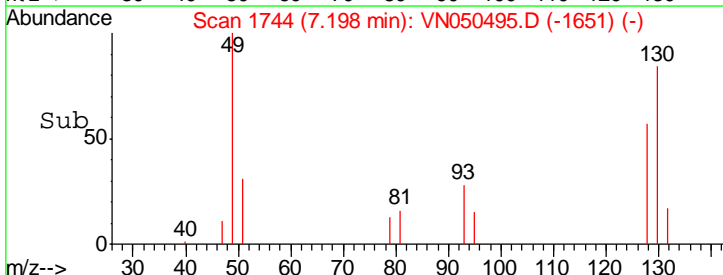
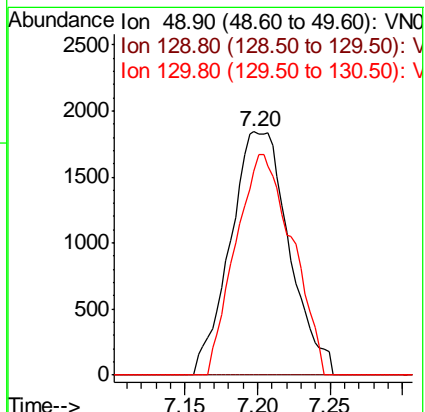
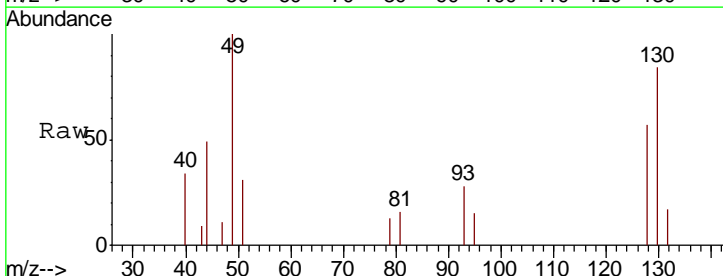
Instrument :
 MSVOA_N
 ClientSampled :

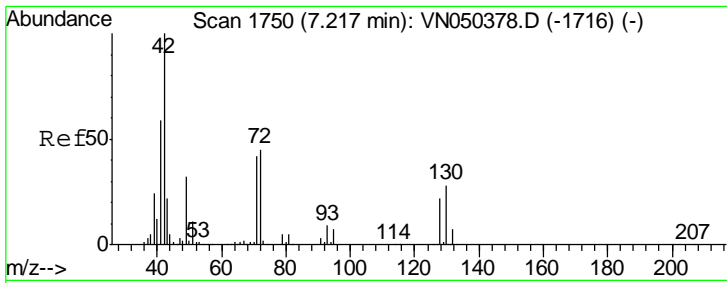
Tgt Ion: 43 Resp: 5311
 Ion Ratio Lower Upper
 43 100
 72 24.2 21.5 32.3



#28
 Bromochloromethane
 Concen: 0.71 ug/l
 RT: 7.20 min Scan# 1744
 Delta R.T. 0.00 min
 Lab File: VN050495.D
 Acq: 9 Aug 2018 19:10

Tgt Ion: 49 Resp: 5191
 Ion Ratio Lower Upper
 49 100
 129 0.0 0.0 4.0
 130 87.3 66.3 99.5

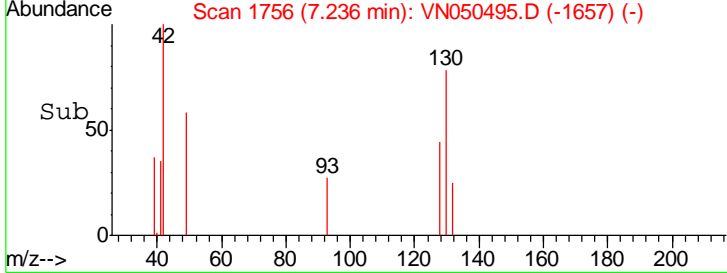
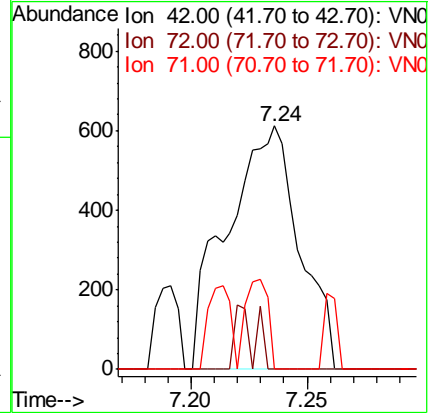
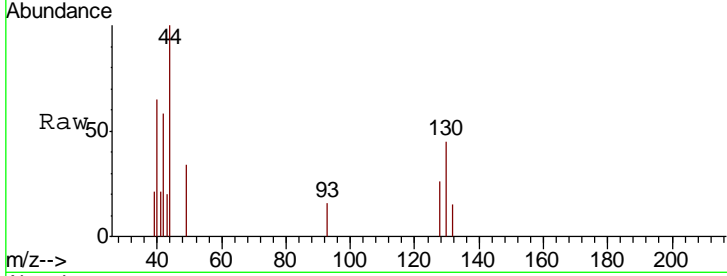




#29
 Tetrahydrofuran
 Concen: 0.51 ug/l
 RT: 7.24 min Scan# 1756
 Delta R.T. 0.02 min
 Lab File: VN050495.D
 Acq: 9 Aug 2018 19:10

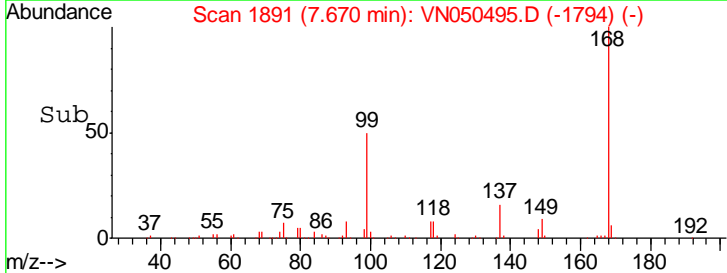
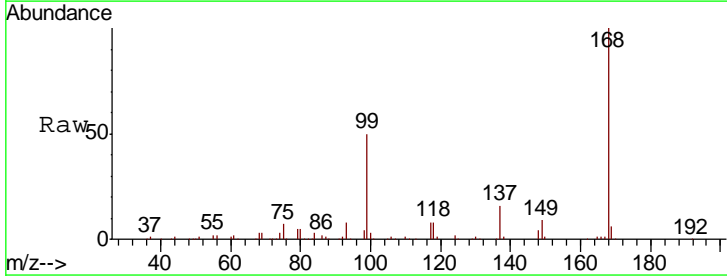
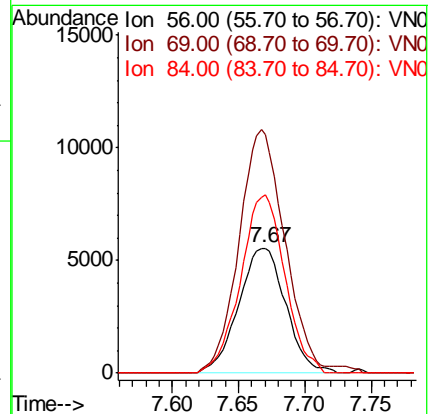
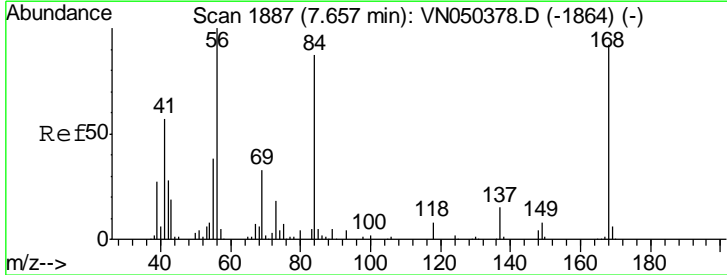
Instrument :
 MSVOA_N
 ClientSampled :

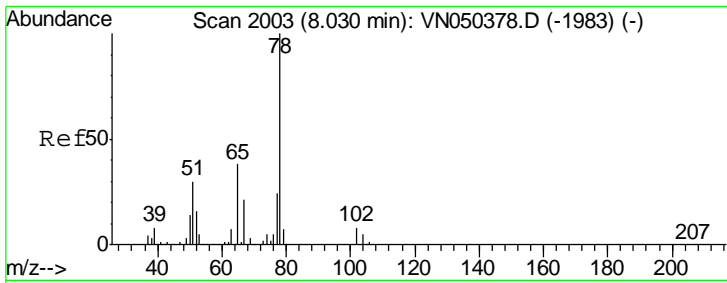
Tgt Ion	Resp	Lower	Upper
42	1328		
72	0.0	35.9	53.9#
71	11.4	33.7	50.5#



#31
 Cyclohexane
 Concen: 0.35 ug/l
 RT: 7.67 min Scan# 1891
 Delta R.T. 0.01 min
 Lab File: VN050495.D
 Acq: 9 Aug 2018 19:10

Tgt Ion	Resp	Lower	Upper
56	13747		
69	190.3	26.2	39.4#
84	142.5	67.4	101.0#

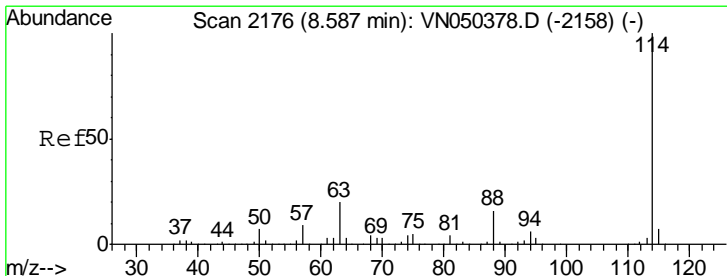
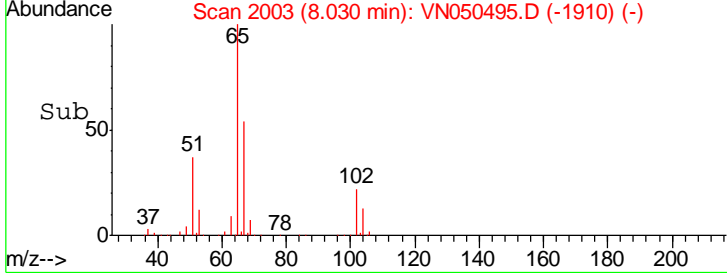
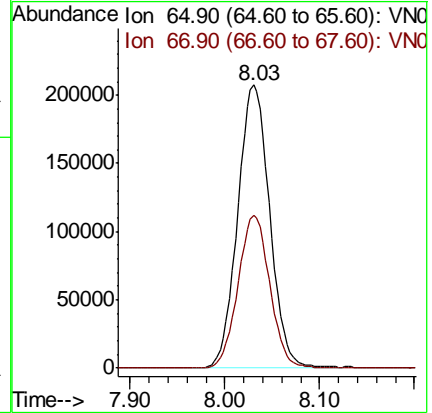
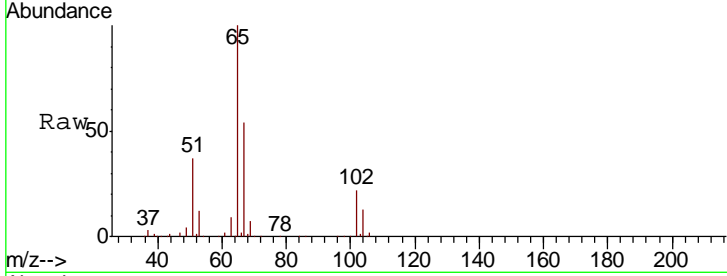




#33
 1,2-Dichloroethane-d4
 Concen: 49.88 ug/l
 RT: 8.03 min Scan# 2003
 Delta R.T. 0.00 min
 Lab File: VN050495.D
 Acq: 9 Aug 2018 19:10

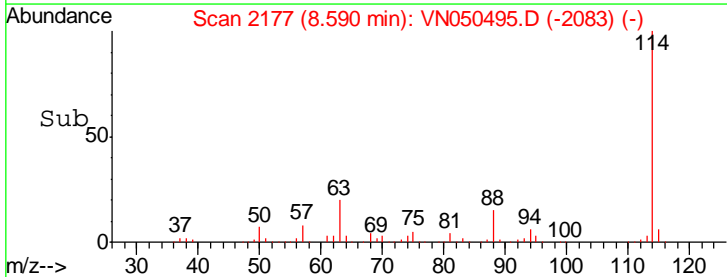
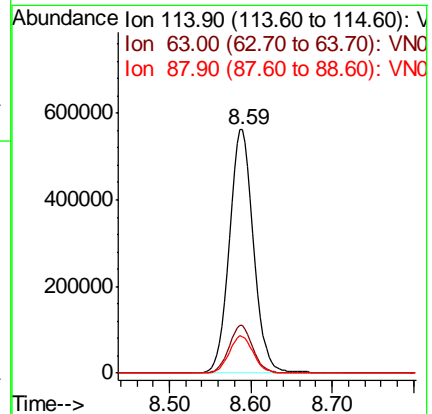
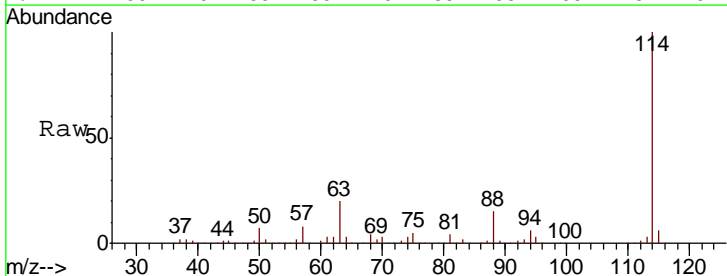
Instrument :
 MSVOA_N
 ClientSampled :

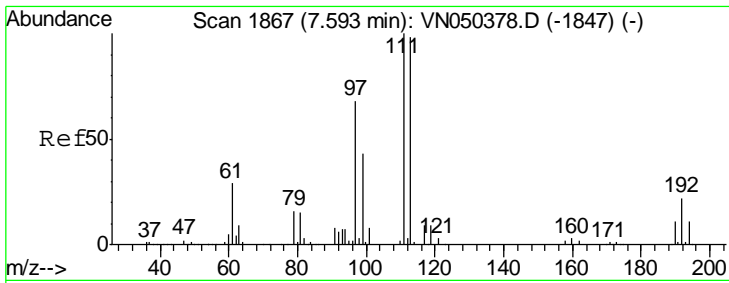
Tgt Ion: 65 Resp: 488988
 Ion Ratio Lower Upper
 65 100
 67 53.5 0.0 108.4



#34
 1,4-Difluorobenzene
 Concen: 50.00 ug/l
 RT: 8.59 min Scan# 2177
 Delta R.T. 0.00 min
 Lab File: VN050495.D
 Acq: 9 Aug 2018 19:10

Tgt Ion: 114 Resp: 1175626
 Ion Ratio Lower Upper
 114 100
 63 19.5 0.0 40.0
 88 15.0 0.0 31.2

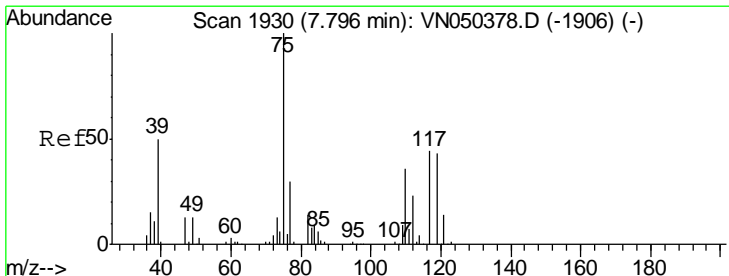
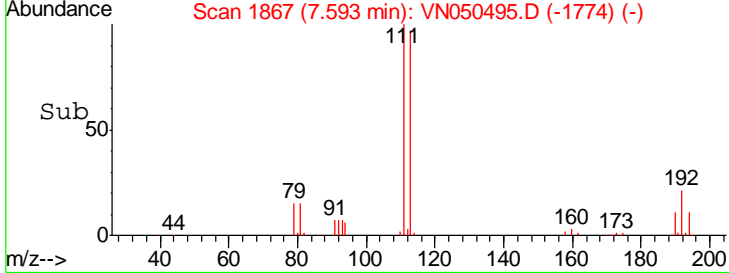
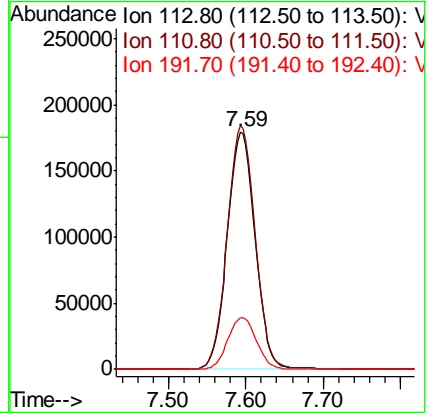
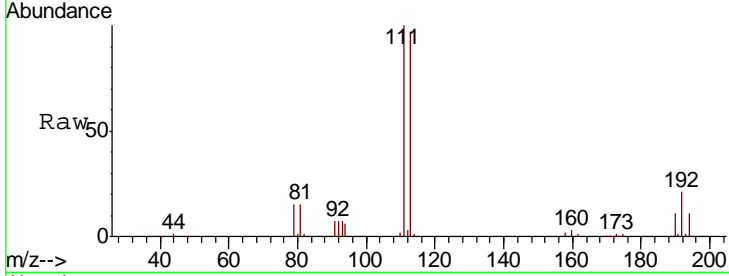




#35
 Dibromofluoromethane
 Concen: 47.51 ug/l
 RT: 7.59 min Scan# 1867
 Delta R.T. 0.00 min
 Lab File: VN050495.D
 Acq: 9 Aug 2018 19:10

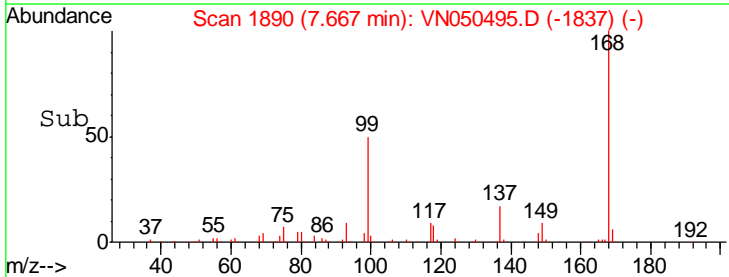
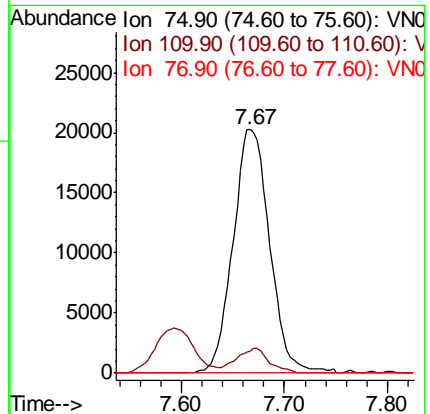
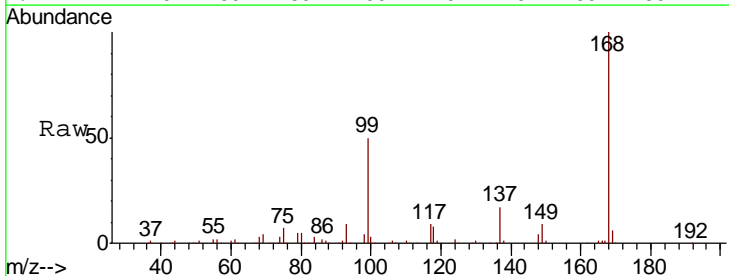
Instrument :
 MSVOA_N
 ClientSampled :

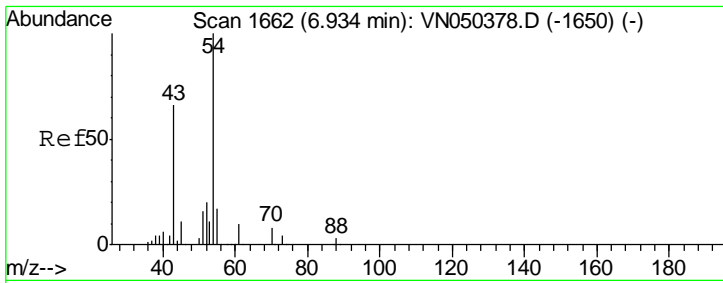
Tgt Ion	Resp	Lower	Upper
113	100		
111	103.1	80.7	121.1
192	22.3	17.8	26.6



#36
 1,1-Dichloropropene
 Concen: 3.88 ug/l
 RT: 7.67 min Scan# 1890
 Delta R.T. -0.13 min
 Lab File: VN050495.D
 Acq: 9 Aug 2018 19:10

Tgt Ion	Resp	Lower	Upper
75	100		
110	9.0	18.4	55.2#
77	0.0	25.3	37.9#

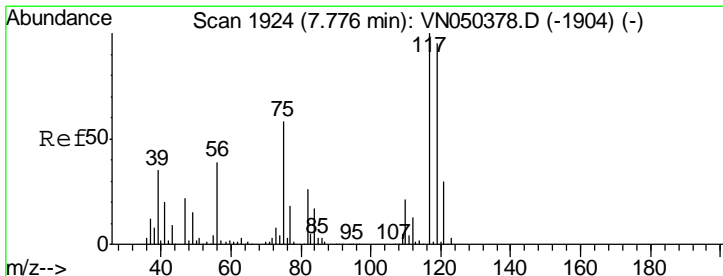
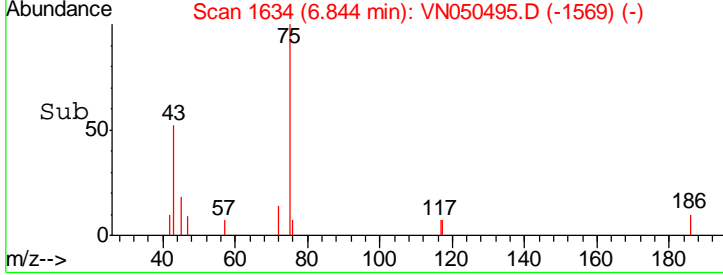
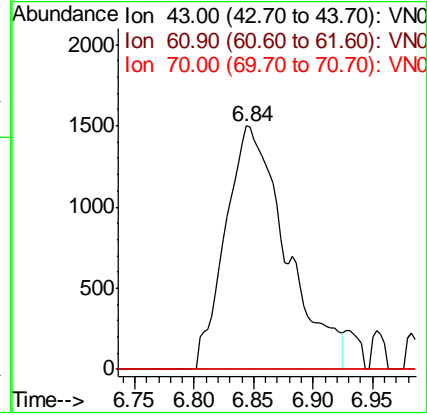
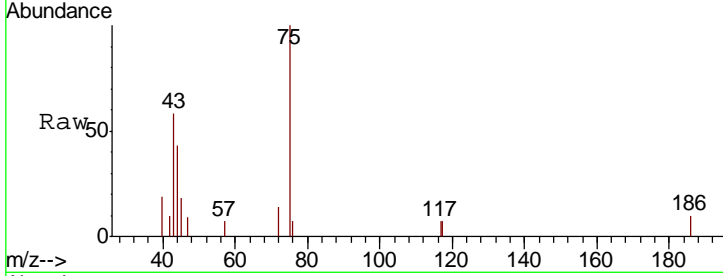




#37
Ethyl Acetate
Concen: 0.57 ug/l
RT: 6.84 min Scan# 1634
Delta R.T. -0.09 min
Lab File: VN050495.D
Acq: 9 Aug 2018 19:10

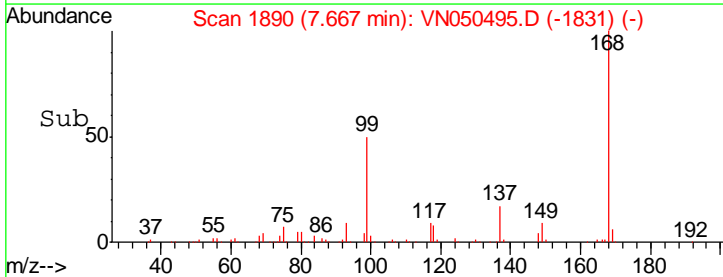
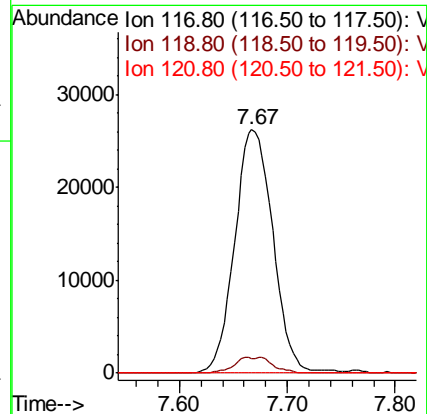
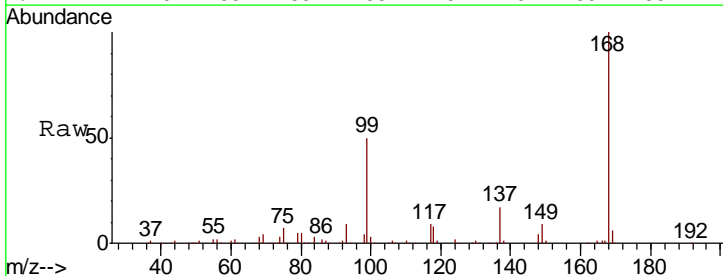
Instrument :
MSVOA_N
ClientSampled :

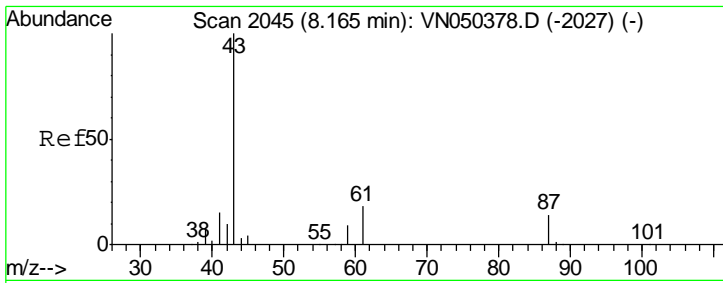
Tgt Ion	Resp	Lower	Upper
43	100		
61	0.0	11.8	17.8#
70	0.0	8.4	12.6#



#38
Carbon Tetrachloride
Concen: 4.81 ug/l
RT: 7.67 min Scan# 1890
Delta R.T. -0.11 min
Lab File: VN050495.D
Acq: 9 Aug 2018 19:10

Tgt Ion	Resp	Lower	Upper
117	100		
119	6.0	77.4	116.0#
121	0.0	23.9	35.9#

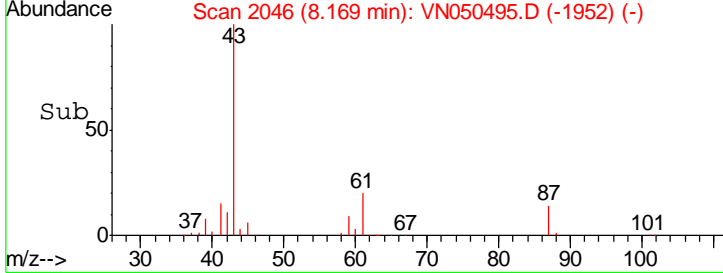
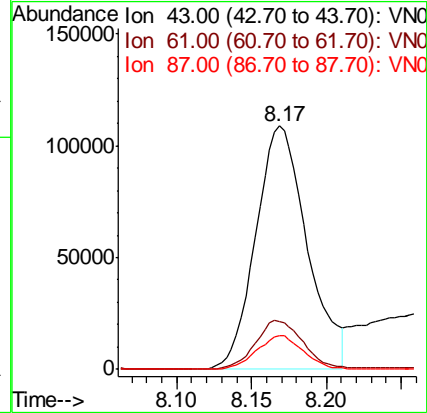
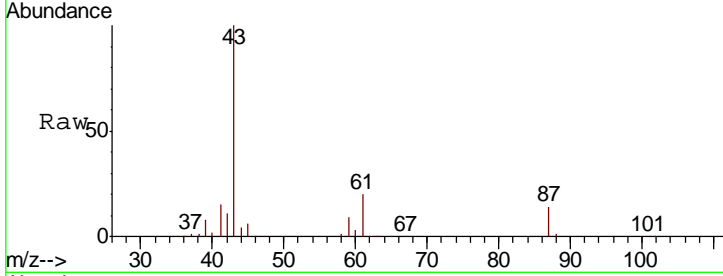




#43
 Isopropyl Acetate
 Concen: 16.16 ug/l
 RT: 8.17 min Scan# 2046
 Delta R.T. 0.00 min
 Lab File: VN050495.D
 Acq: 9 Aug 2018 19:10

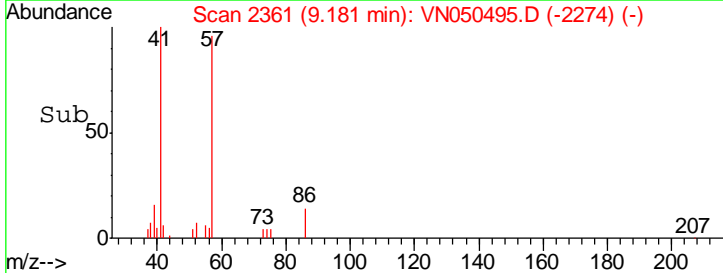
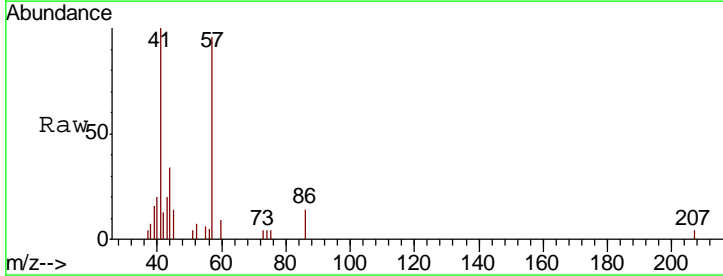
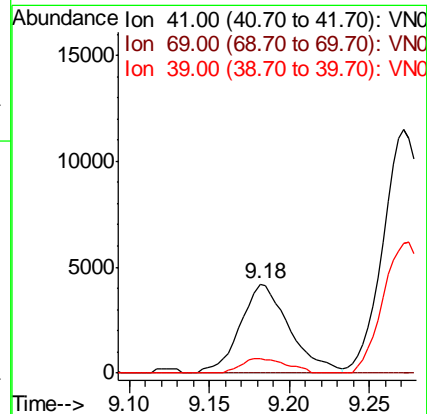
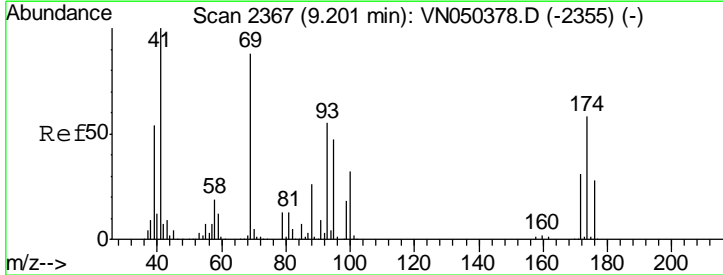
Instrument :
 MSVOA_N
 ClientSampled :

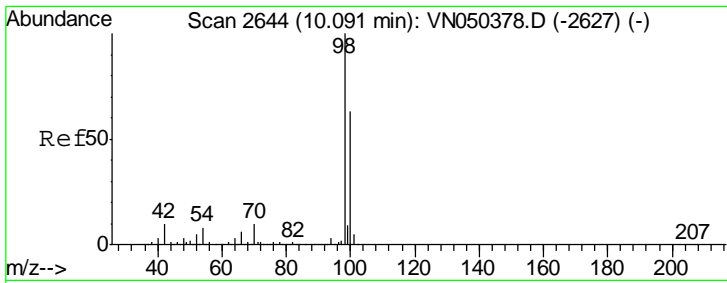
Tgt Ion	Resp	Lower	Upper
43	100		
61	18.7	15.8	23.6
87	12.6	10.3	15.5



#48
 Methyl methacrylate
 Concen: 1.10 ug/l
 RT: 9.18 min Scan# 2361
 Delta R.T. -0.02 min
 Lab File: VN050495.D
 Acq: 9 Aug 2018 19:10

Tgt Ion	Resp	Lower	Upper
41	100		
69	0.0	70.6	105.8#
39	15.1	43.9	65.9#



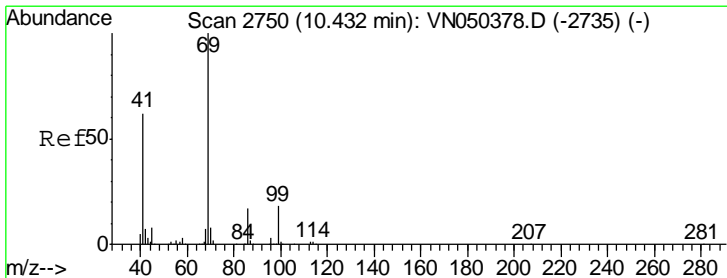
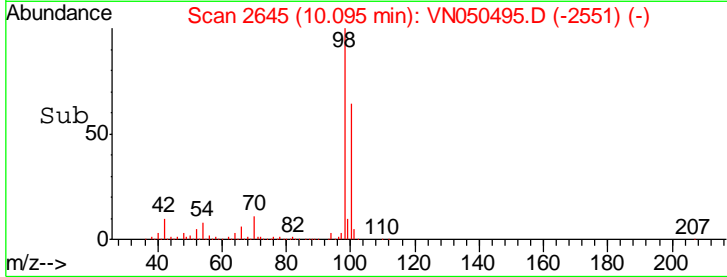
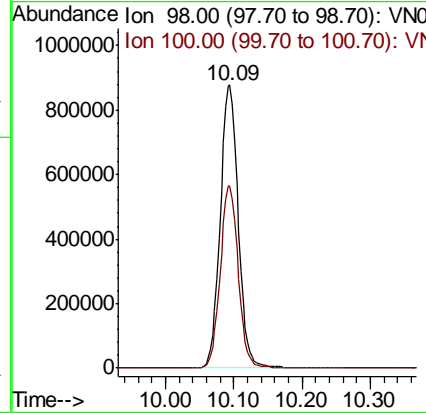
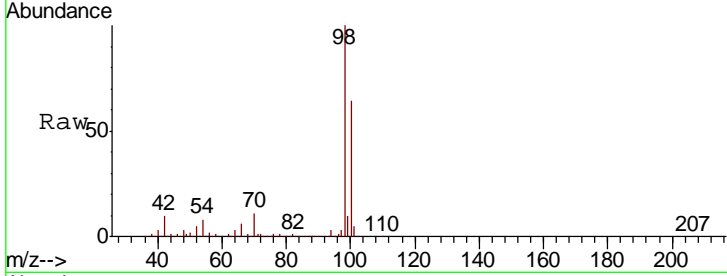


#50
 Toluene-d8
 Concen: 45.39 ug/l
 RT: 10.09 min Scan# 2645
 Delta R.T. 0.00 min
 Lab File: VN050495.D
 Acq: 9 Aug 2018 19:10

Instrument :
 MSVOA_N
 ClientSampled :

Tgt Ion: 98 Resp: 1609708

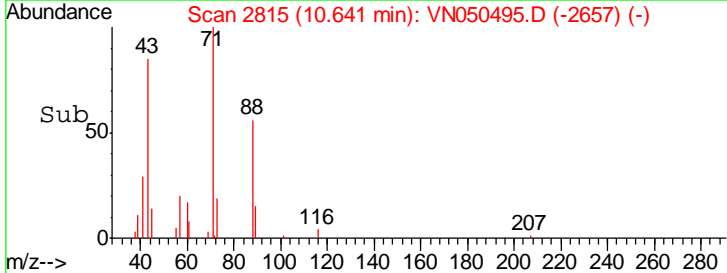
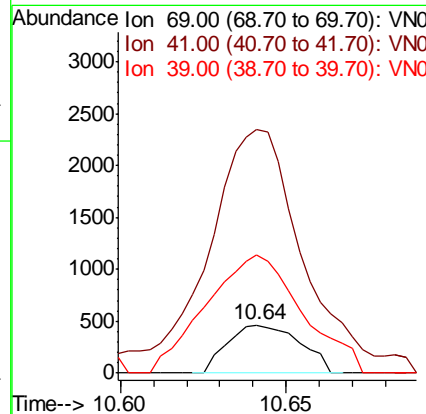
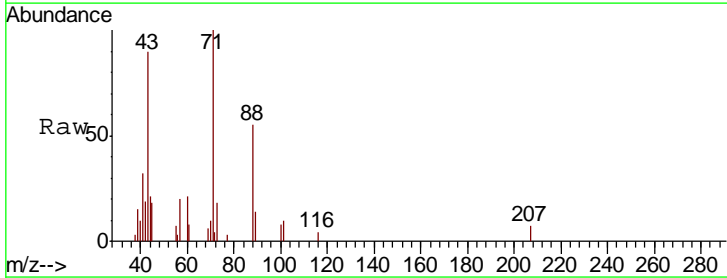
Ion	Ratio	Lower	Upper
98	100		
100	64.2	50.7	76.1

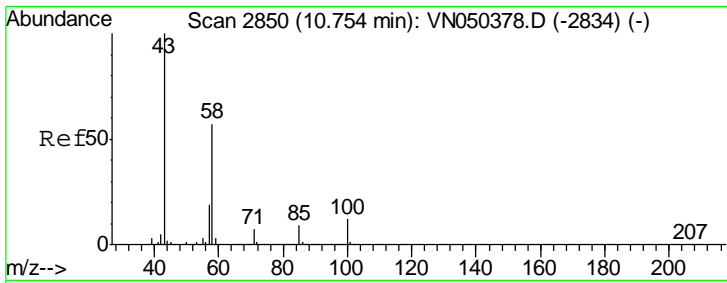


#56
 Ethyl methacrylate
 Concen: 1.76 ug/l
 RT: 10.64 min Scan# 2815
 Delta R.T. 0.21 min
 Lab File: VN050495.D
 Acq: 9 Aug 2018 19:10

Tgt Ion: 69 Resp: 705

Ion	Ratio	Lower	Upper
69	100		
41	676.2	51.0	76.4#
39	326.1	26.6	40.0#

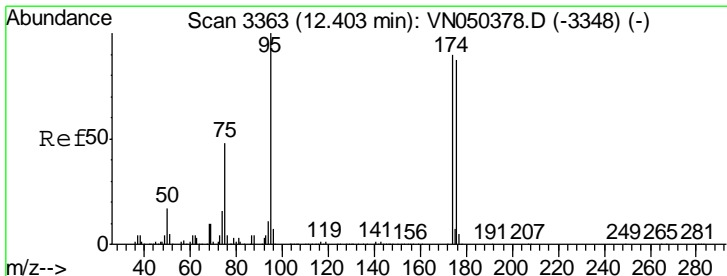
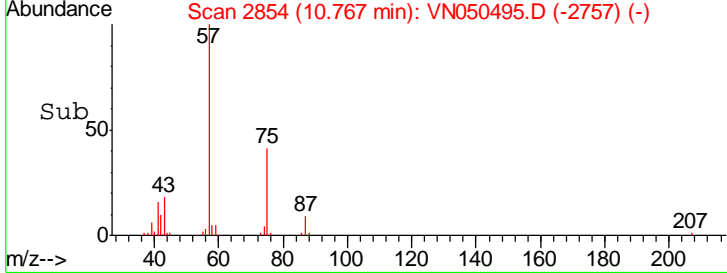
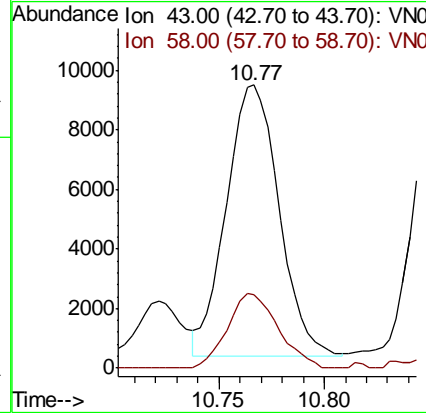
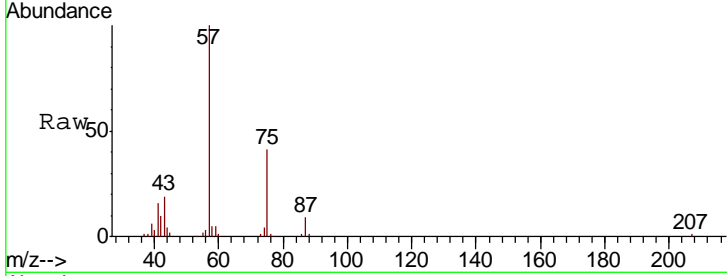




#59
 2-Hexanone
 Concen: 1.96 ug/l
 RT: 10.77 min Scan# 2854
 Delta R.T. 0.01 min
 Lab File: VN050495.D
 Acq: 9 Aug 2018 19:10

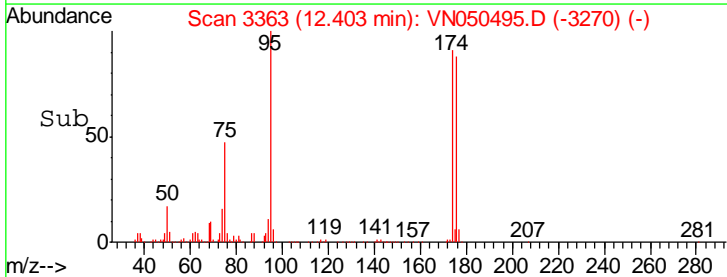
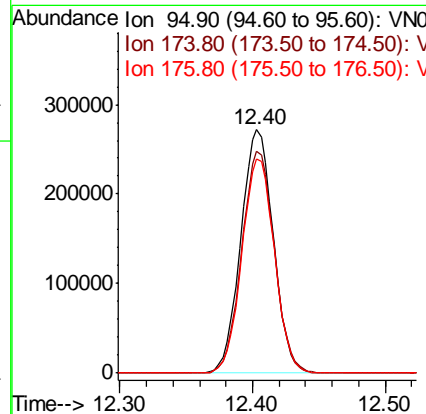
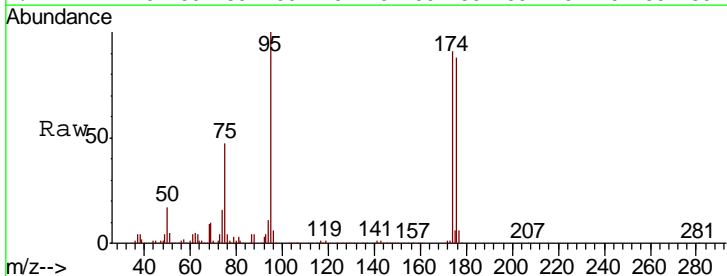
Instrument :
 MSVOA_N
 ClientSampled :

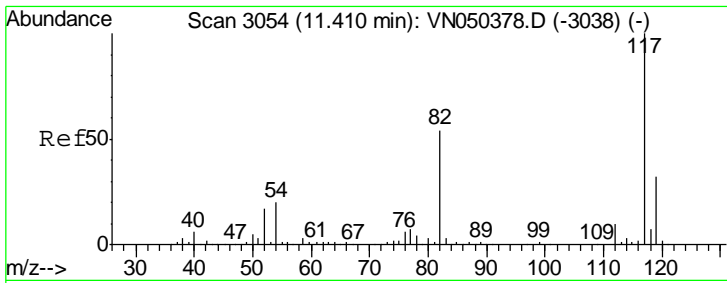
Tgt Ion	Resp	Lower	Upper
43	15853		
58	26.4	27.6	82.7#



#62
 4-Bromofluorobenzene
 Concen: 38.20 ug/l
 RT: 12.40 min Scan# 3363
 Delta R.T. 0.00 min
 Lab File: VN050495.D
 Acq: 9 Aug 2018 19:10

Tgt Ion	Resp	Lower	Upper
95	461796		
174	91.4	0.0	178.2
176	88.4	0.0	173.4



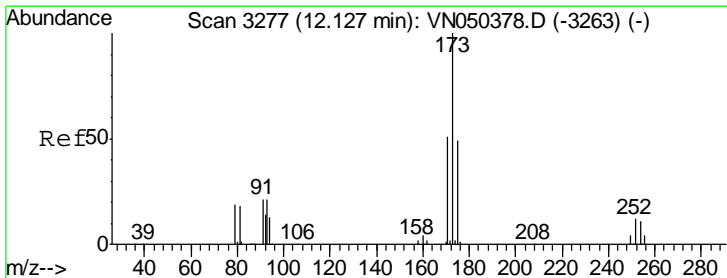
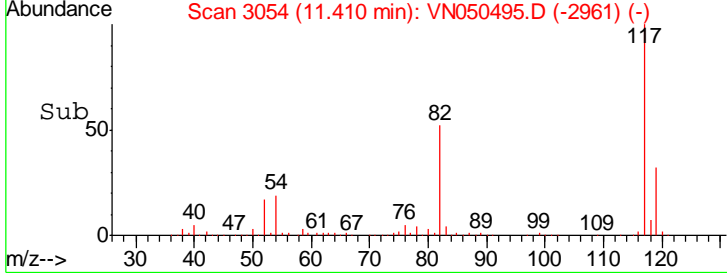
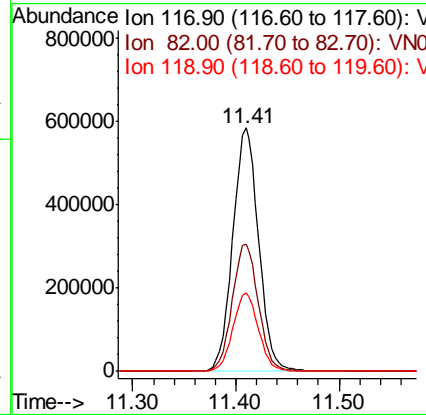
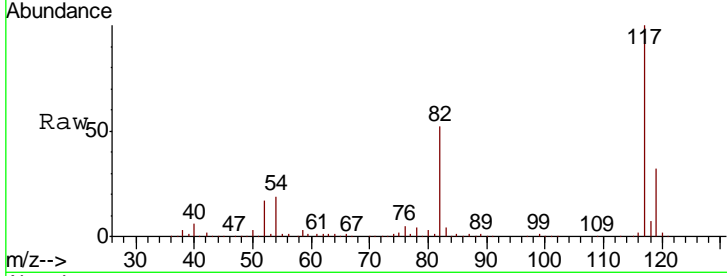


#63
 Chlorobenzene-d5
 Concen: 50.00 ug/l
 RT: 11.41 min Scan# 3054
 Delta R.T. 0.00 min
 Lab File: VN050495.D
 Acq: 9 Aug 2018 19:10

Instrument :
 MSVOA_N
 ClientSampled :

Tgt Ion:117 Resp: 1018689

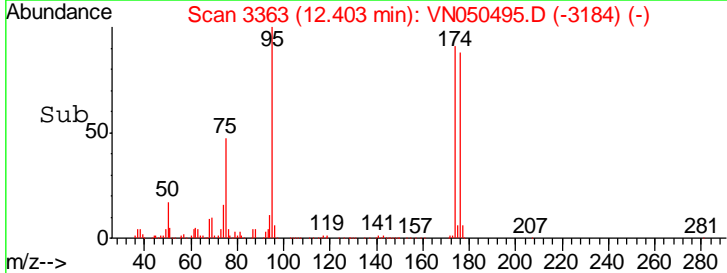
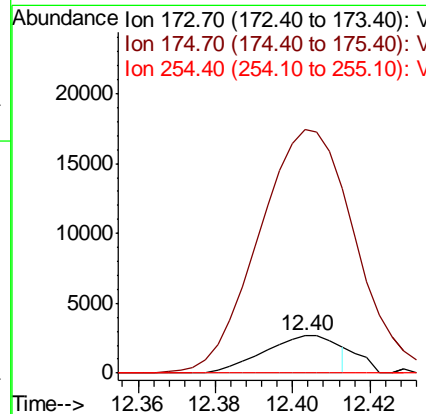
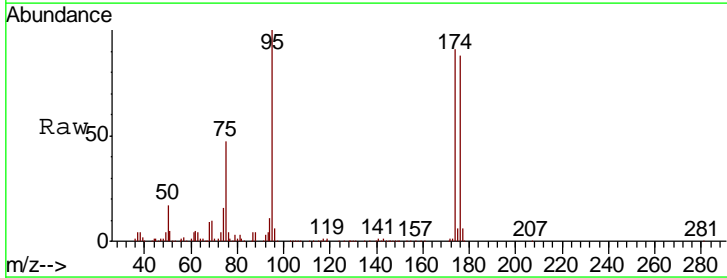
Ion	Ratio	Lower	Upper
117	100		
82	52.3	43.7	65.5
119	32.2	26.1	39.1

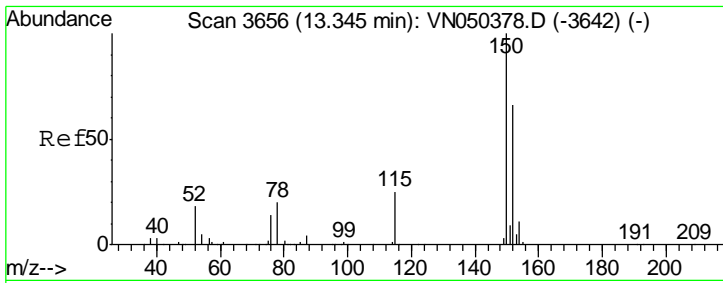


#71
 Bromoform
 Concen: 0.52 ug/l
 RT: 12.40 min Scan# 3363
 Delta R.T. 0.28 min
 Lab File: VN050495.D
 Acq: 9 Aug 2018 19:10

Tgt Ion:173 Resp: 3552

Ion	Ratio	Lower	Upper
173	100		
175	704.5	24.1	72.2#
254	0.0	0.2	0.2#

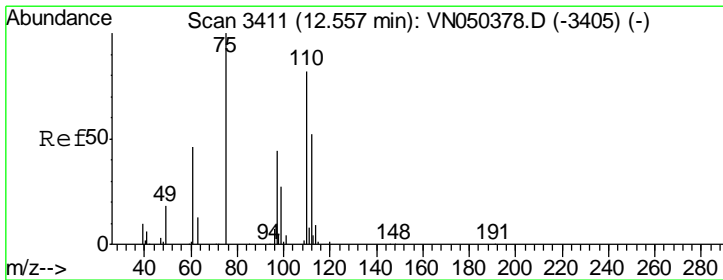
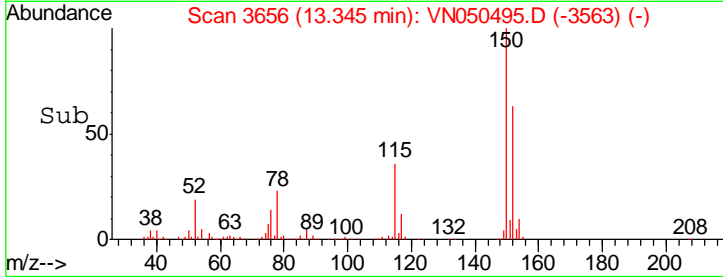
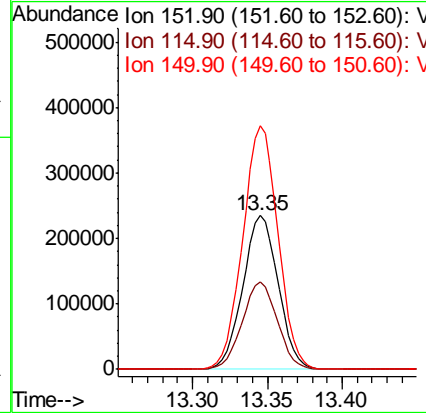
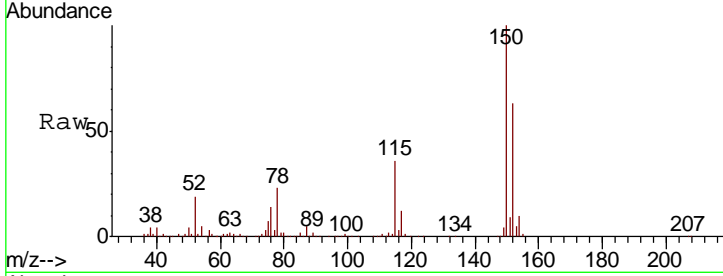




#72
 1,4-Dichlorobenzene-d4
 Concen: 50.00 ug/l
 RT: 13.35 min Scan# 3656
 Delta R.T. 0.00 min
 Lab File: VN050495.D
 Acq: 9 Aug 2018 19:10

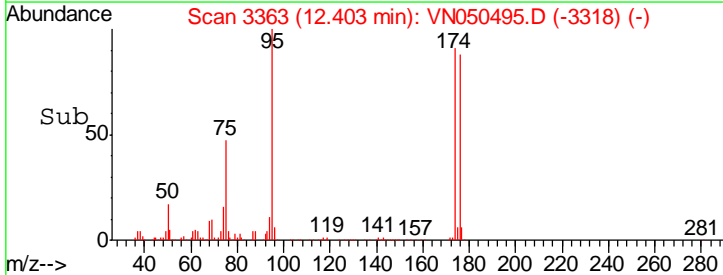
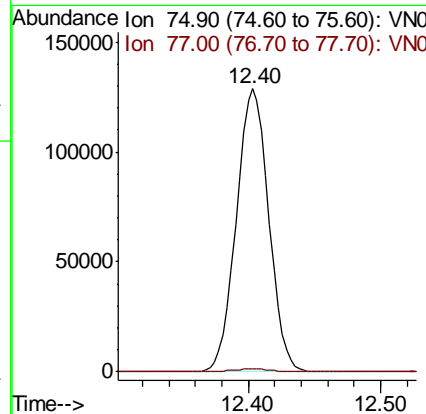
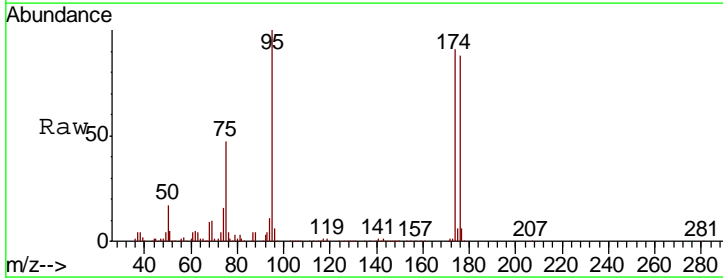
Instrument : MSVOA_N
 ClientSampled :

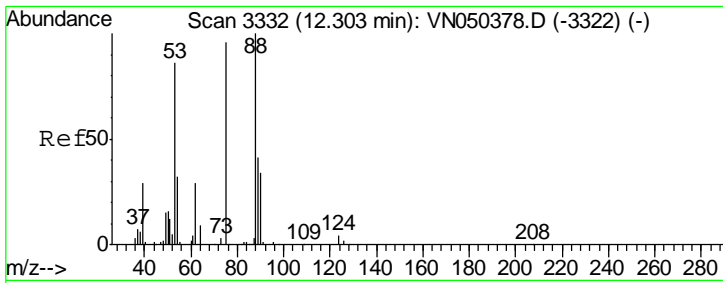
Tgt Ion	Resp	Lower	Upper
152	100		
115	56.3	27.8	83.3
150	157.9	0.0	348.6



#76
 1,2,3-Trichloropropane
 Concen: 31.14 ug/l
 RT: 12.40 min Scan# 3363
 Delta R.T. -0.15 min
 Lab File: VN050495.D
 Acq: 9 Aug 2018 19:10

Tgt Ion	Resp	Lower	Upper
75	100		
77	1.2	0.0	0.0#

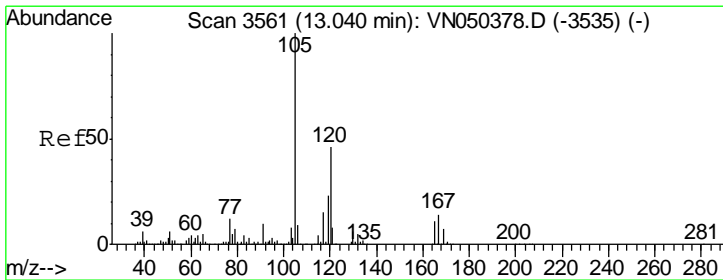
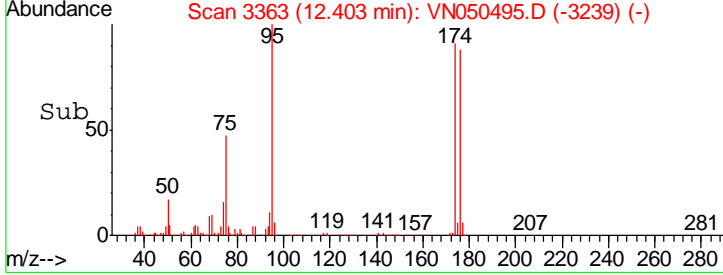
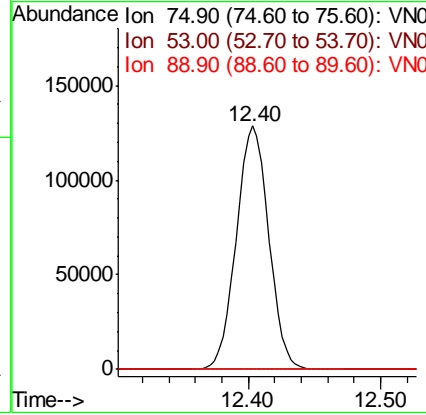
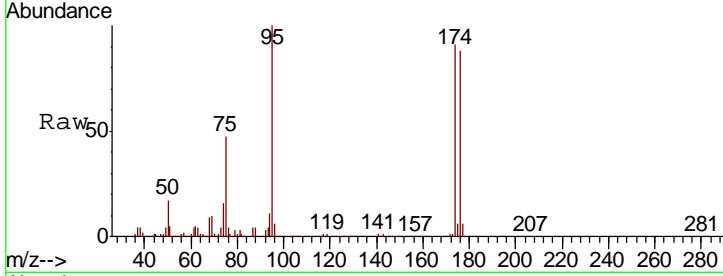




#81
 trans-1,4-Dichloro-2-butene
 Concen: 109.41 ug/l
 RT: 12.40 min Scan# 3363
 Delta R.T. 0.10 min
 Lab File: VN050495.D
 Acq: 9 Aug 2018 19:10

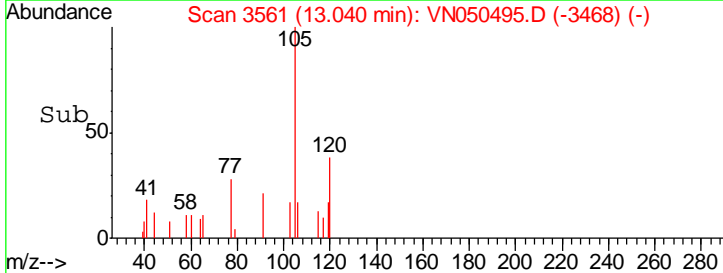
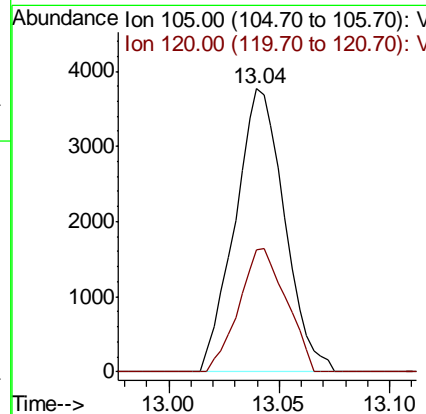
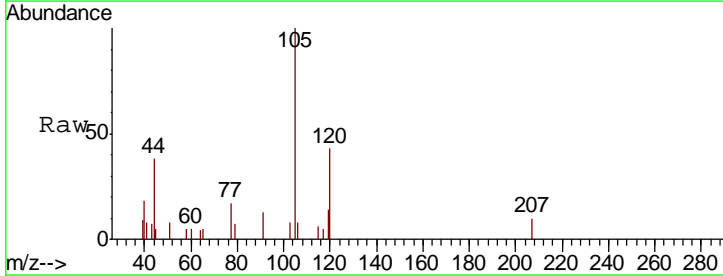
Instrument :
 MSVOA_N
 ClientSampled :

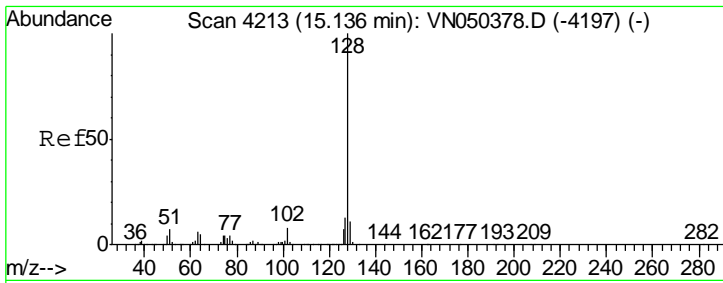
Tgt Ion	Resp	Lower	Upper
75	100		
53	0.2	73.5	110.3#
89	0.0	36.0	54.0#



#84
 1,2,4-Trimethylbenzene
 Concen: 0.25 ug/l
 RT: 13.04 min Scan# 3561
 Delta R.T. -0.00 min
 Lab File: VN050495.D
 Acq: 9 Aug 2018 19:10

Tgt Ion	Resp	Lower	Upper
105	100		
120	41.5	22.9	68.7





#95
 Naphthalene
 Concen: 7.54 ug/l
 RT: 15.14 min Scan# 4213
 Delta R.T. 0.00 min
 Lab File: VN050495.D
 Acq: 9 Aug 2018 19:10

Instrument : MSVOA_N
 ClientSampled :

Tot Ion	Ratio	Lower	Upper
128	100		
127	13.5	10.4	15.6
129	10.7	8.8	13.2

