

Data Path : Z:\VOASRV\HPCHEM1\MSVOA N\DATA\VN080919\
 Data File : VN057157.D
 Acq On : 9 Aug 2019 19:35
 Operator : JC/SP
 Sample : K4290-07
 Misc : 5.00mL/MSVOA N/WATER
 ALS Vial : 24 Sample Multiplier: 1

Instrument :
 MSVOA_N
 ClientSampleId :
 WP-4

Quant Time: Aug 10 08:15:40 2019
 Quant Method : Z:\VOASRV\HPCHEM1\MSVOA_N\METHODS\82N080719W.M
 Quant Title : SW846 8260
 QLast Update : Thu Aug 08 06:49:25 2019
 Response via : Initial Calibration

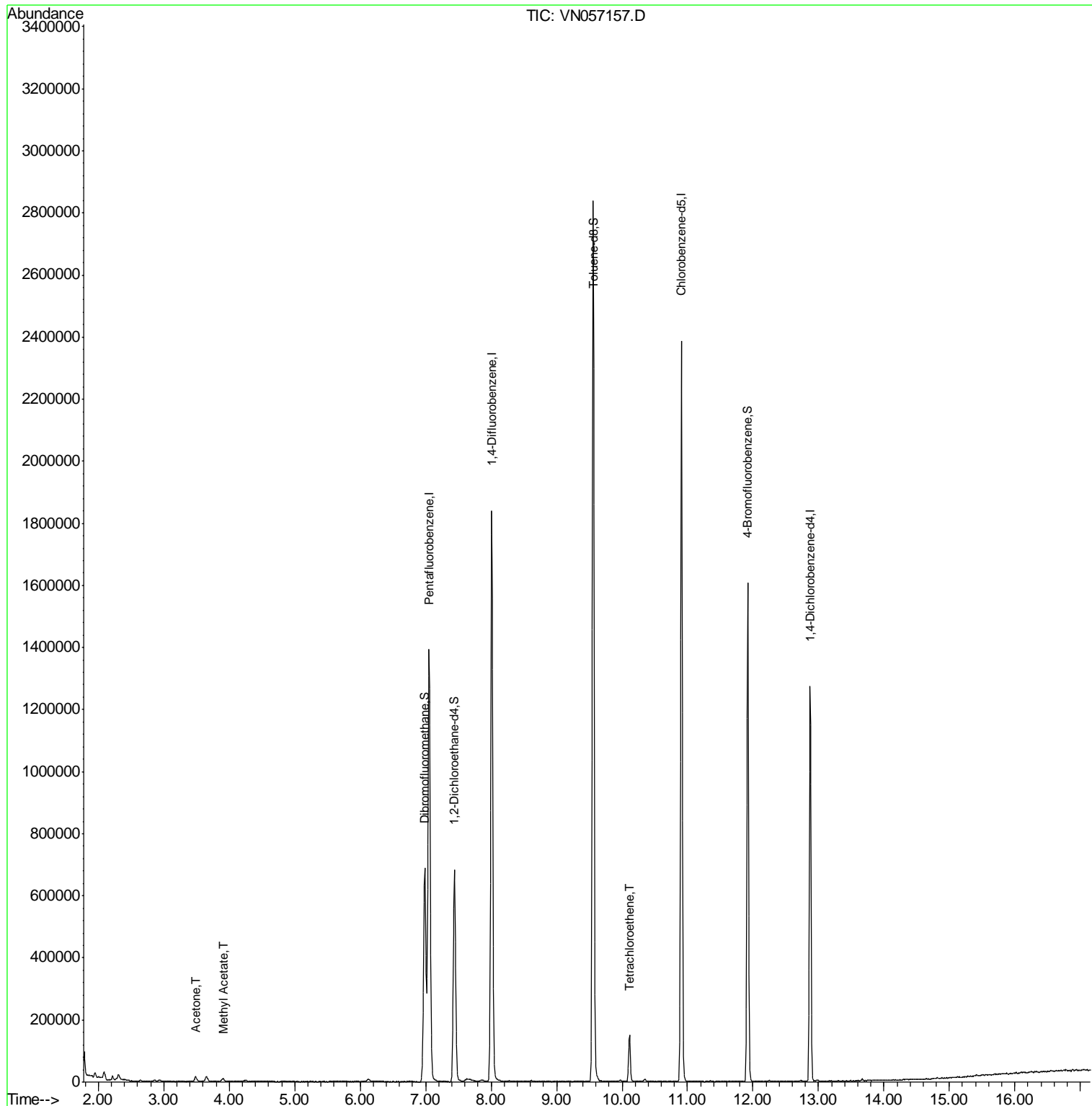
| Internal Standards | R.T. | QIon | Response | Conc | Units | Dev(Min) |
|-----------------------------|-------|------|----------|--------|--------|----------|
| 1) Pentafluorobenzene | 7.05 | 168 | 1331355 | 50.00 | ug/l | 0.00 |
| 34) 1,4-Difluorobenzene | 8.01 | 114 | 1849549 | 50.00 | ug/l | 0.00 |
| 63) Chlorobenzene-d5 | 10.91 | 117 | 1530845 | 50.00 | ug/l | 0.00 |
| 72) 1,4-Dichlorobenzene-d4 | 12.88 | 152 | 376692 | 50.00 | ug/l | 0.00 |
| System Monitoring Compounds | | | | | | |
| 33) 1,2-Dichloroethane-d4 | 7.44 | 65 | 617542 | 45.10 | ug/l | 0.00 |
| Spiked Amount | | | | 50.000 | | |
| | | | Recovery | = | 90.20% | |
| 35) Dibromofluoromethane | 6.99 | 113 | 556121 | 47.92 | ug/l | 0.00 |
| Spiked Amount | | | | 50.000 | | |
| | | | Recovery | = | 95.84% | |
| 50) Toluene-d8 | 9.56 | 98 | 2145620 | 48.32 | ug/l | 0.00 |
| Spiked Amount | | | | 50.000 | | |
| | | | Recovery | = | 96.64% | |
| 62) 4-Bromofluorobenzene | 11.92 | 95 | 552650 | 38.63 | ug/l | 0.00 |
| Spiked Amount | | | | 50.000 | | |
| | | | Recovery | = | 77.26% | |
| Target Compounds | | | | | | |
| 16) Acetone | 3.48 | 43 | 21303 | 5.152 | ug/l | 94 |
| 18) Methyl Acetate | 3.91 | 43 | 16984 | 0.731 | ug/l | 92 |
| 64) Tetrachloroethene | 10.11 | 164 | 38892 | 3.055 | ug/l | 98 |

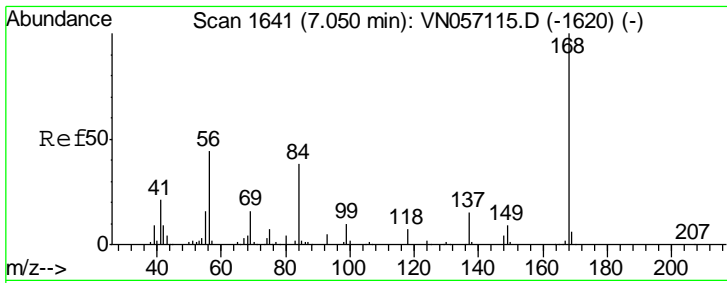
(#) = qualifier out of range (m) = manual integration (+) = signals summed

Data Path : Z:\VOASRV\HPCHEM1\MSVOA N\DATA\VN080919\
 Data File : VN057157.D
 Acq On : 9 Aug 2019 19:35
 Operator : JC/SP
 Sample : K4290-07
 Misc : 5.00mL/MSVOA N/WATER
 ALS Vial : 24 Sample Multiplier: 1

Instrument :
 MSVOA_N
 ClientSampled :
 WP-4

Quant Time: Aug 10 08:15:40 2019
 Quant Method : Z:\VOASRV\HPCHEM1\MSVOA_N\METHODS\82N080719W.M
 Quant Title : SW846 8260
 QLast Update : Thu Aug 08 06:49:25 2019
 Response via : Initial Calibration

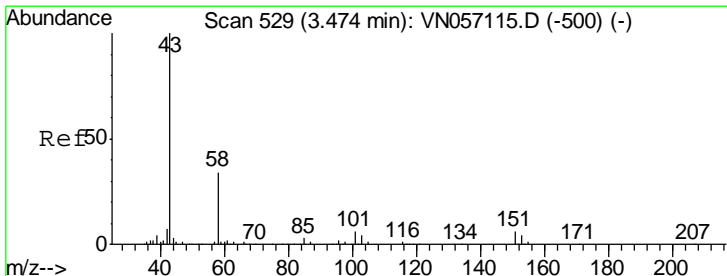
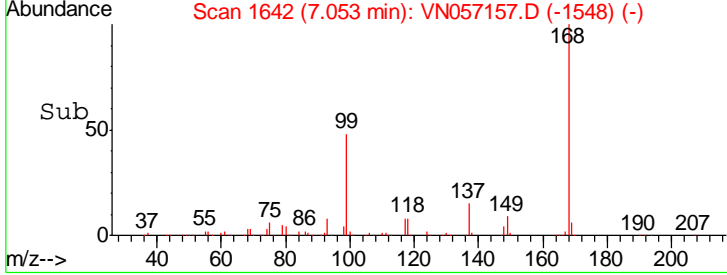
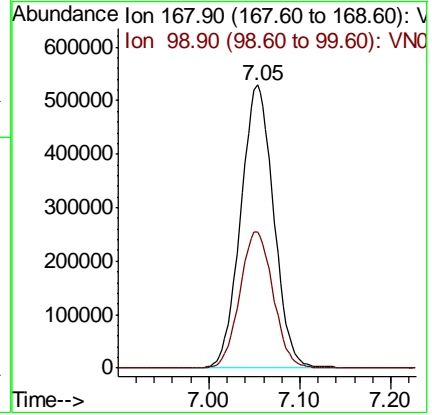
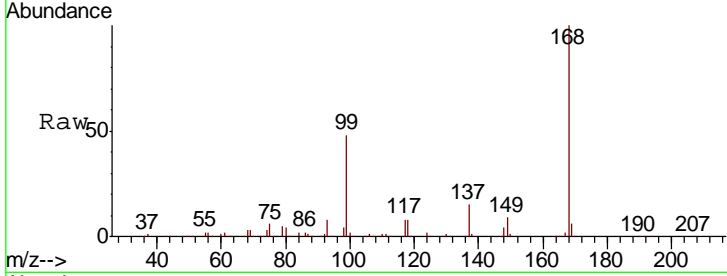




#1
 Pentafluorobenzene
 Concen: 50.000 ug/l
 RT: 7.05 min Scan# 1642
 Delta R.T. 0.00 min
 Lab File: VN057157.D
 Acq: 9 Aug 2019 19:35

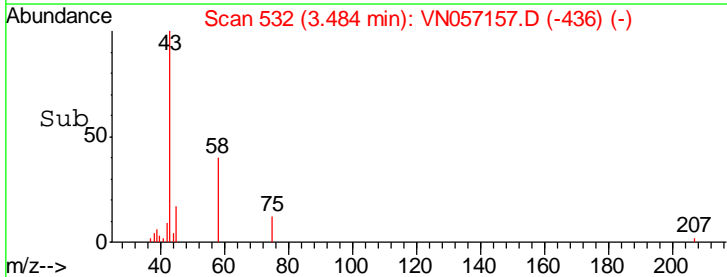
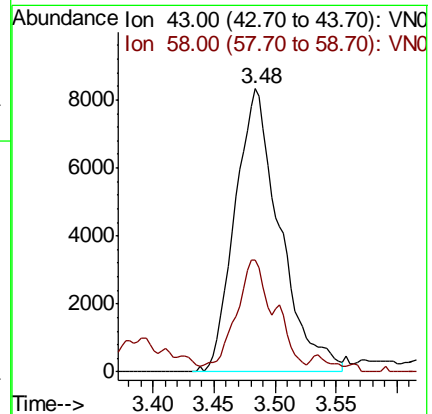
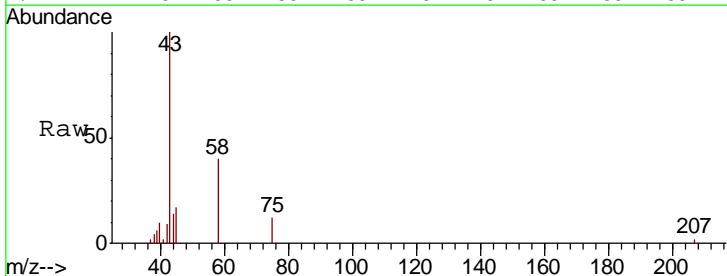
Instrument :
 MSVOA_N
 ClientSampled :
 WP-4

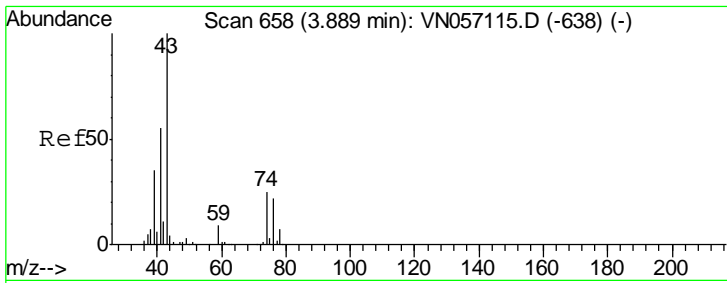
Tgt Ion: 168 Resp: 1331355
 Ion Ratio Lower Upper
 168 100
 99 48.1 38.6 57.8



#16
 Acetone
 Concen: 5.152 ug/l
 RT: 3.48 min Scan# 532
 Delta R.T. 0.01 min
 Lab File: VN057157.D
 Acq: 9 Aug 2019 19:35

Tgt Ion: 43 Resp: 21303
 Ion Ratio Lower Upper
 43 100
 58 37.6 27.4 41.2

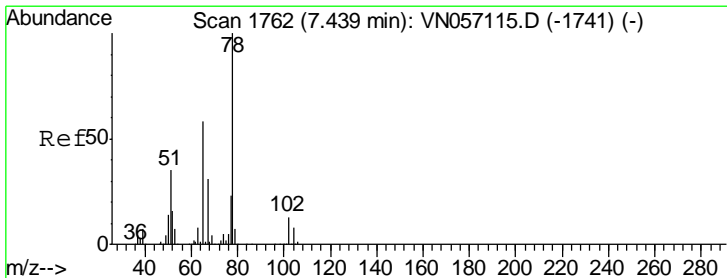
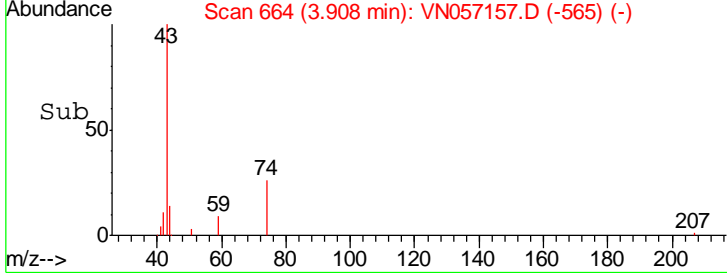
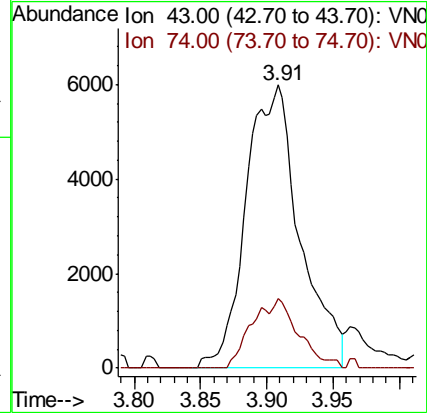
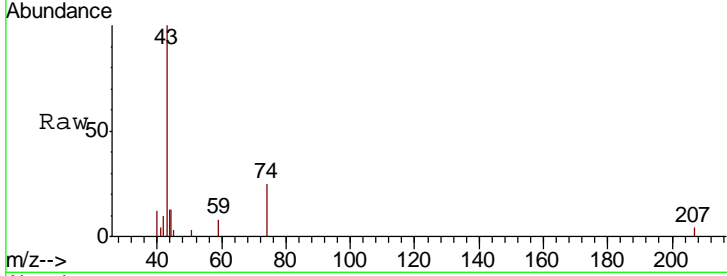




#18
 Methyl Acetate
 Concen: 0.731 ug/l
 RT: 3.91 min Scan# 664
 Delta R.T. 0.02 min
 Lab File: VN057157.D
 Acq: 9 Aug 2019 19:35

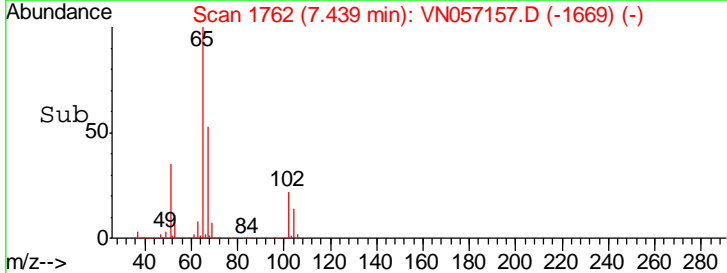
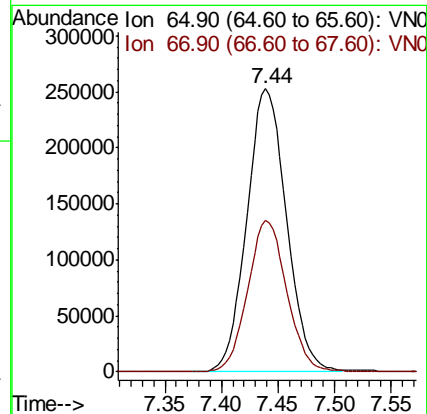
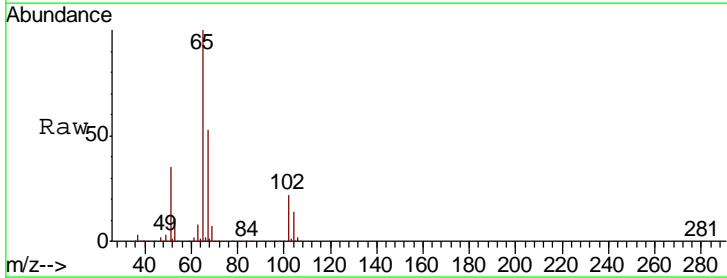
Instrument :
 MSVOA_N
 ClientSampled :
 WP-4

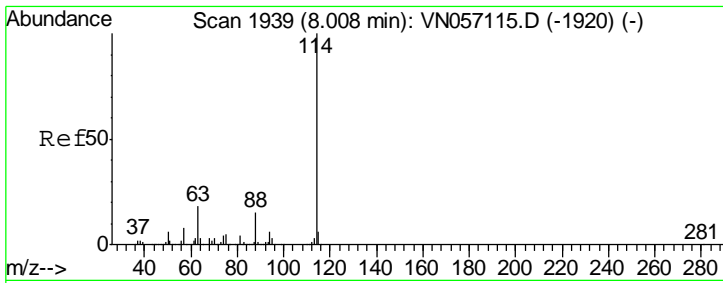
Tgt Ion: 43 Resp: 16984
 Ion Ratio Lower Upper
 43 100
 74 21.2 20.2 30.4



#33
 1,2-Dichloroethane-d4
 Concen: 45.102 ug/l
 RT: 7.44 min Scan# 1762
 Delta R.T. 0.00 min
 Lab File: VN057157.D
 Acq: 9 Aug 2019 19:35

Tgt Ion: 65 Resp: 617542
 Ion Ratio Lower Upper
 65 100
 67 52.7 0.0 108.2



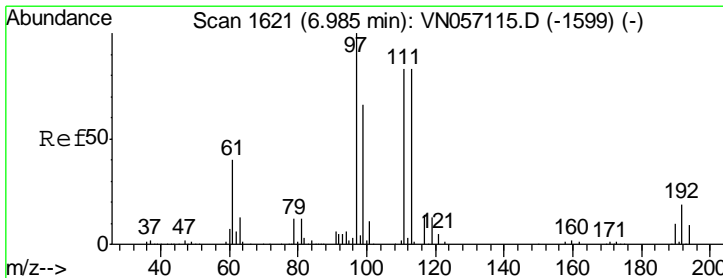
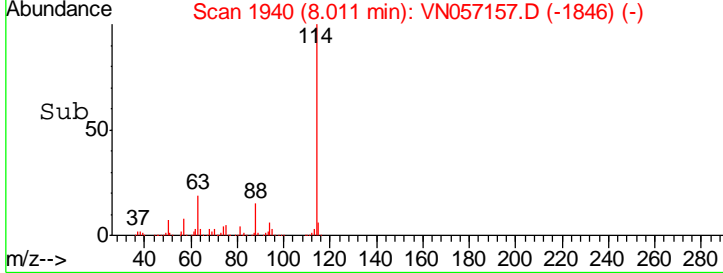
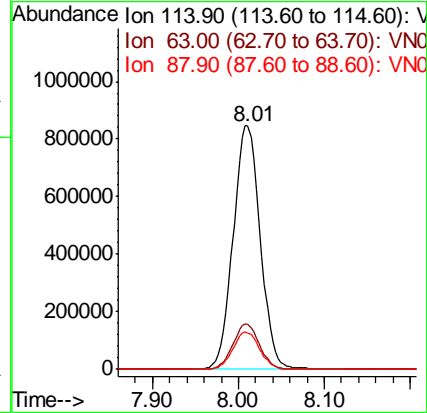
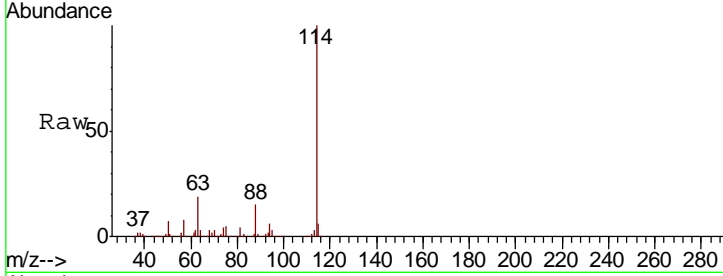


#34
 1,4-Difluorobenzene
 Concen: 50.000 ug/l
 RT: 8.01 min Scan# 1940
 Delta R.T. 0.00 min
 Lab File: VN057157.D
 Acq: 9 Aug 2019 19:35

Instrument :
 MSVOA_N
 ClientSampled :
 WP-4

Tgt Ion:114 Resp: 1849549

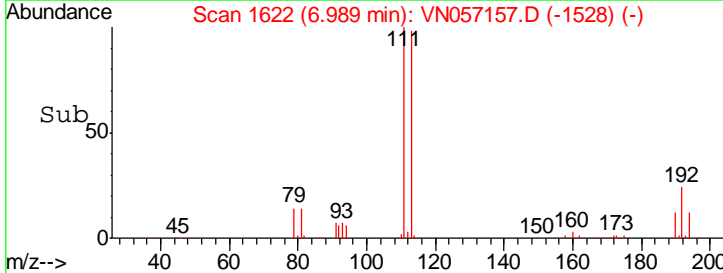
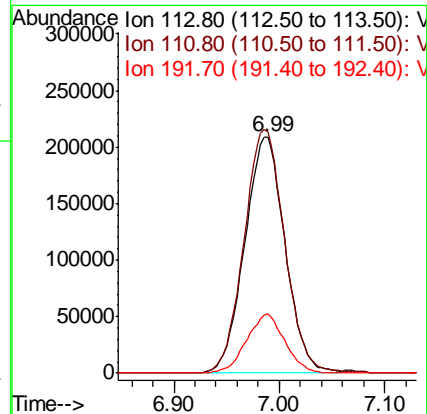
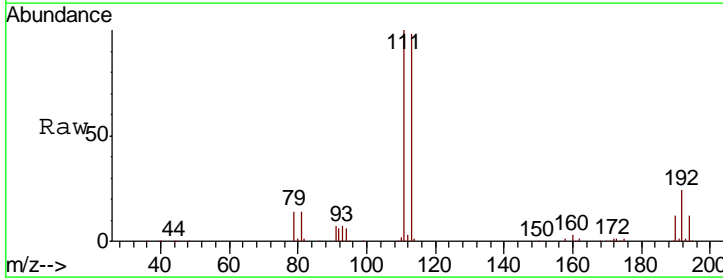
| Ion | Ratio | Lower | Upper |
|-----|-------|-------|-------|
| 114 | 100 | | |
| 63 | 18.5 | 0.0 | 36.2 |
| 88 | 15.1 | 0.0 | 30.0 |

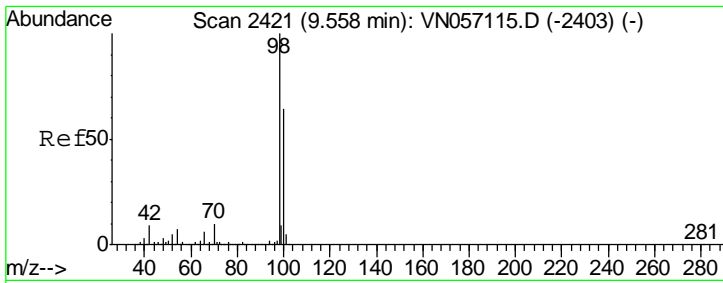


#35
 Dibromofluoromethane
 Concen: 47.916 ug/l
 RT: 6.99 min Scan# 1622
 Delta R.T. 0.00 min
 Lab File: VN057157.D
 Acq: 9 Aug 2019 19:35

Tgt Ion:113 Resp: 556121

| Ion | Ratio | Lower | Upper |
|-----|-------|-------|-------|
| 113 | 100 | | |
| 111 | 104.2 | 81.3 | 121.9 |
| 192 | 23.7 | 19.0 | 28.4 |

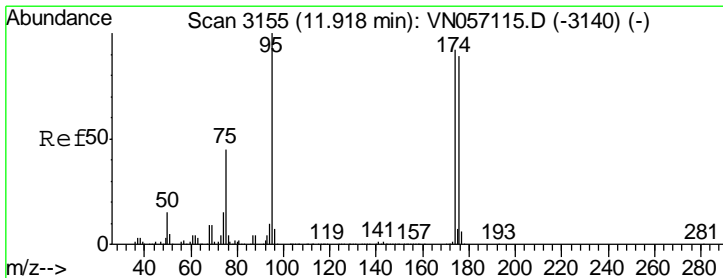
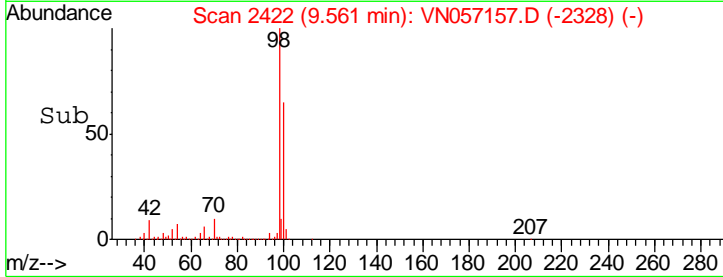
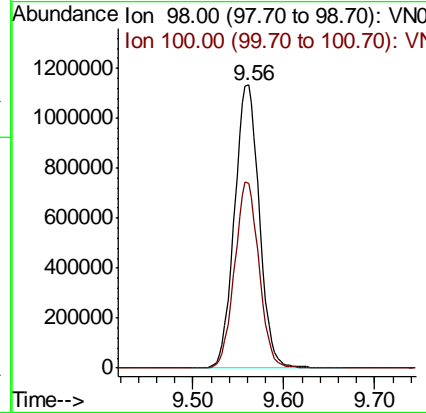
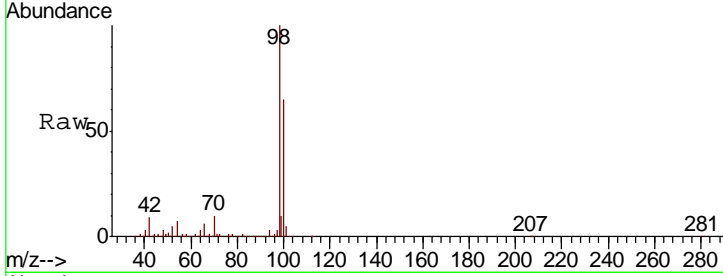




#50
 Toluene-d8
 Concen: 48.321 ug/l
 RT: 9.56 min Scan# 2422
 Delta R.T. 0.00 min
 Lab File: VN057157.D
 Acq: 9 Aug 2019 19:35

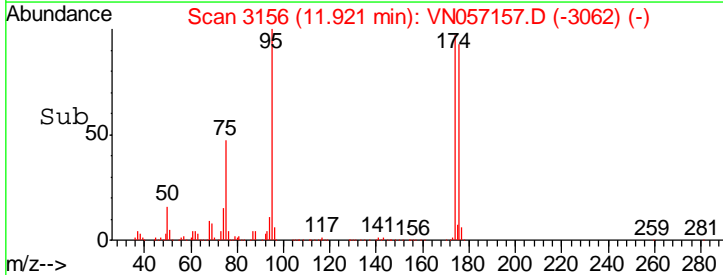
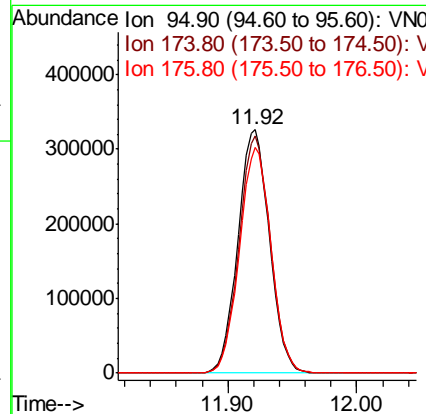
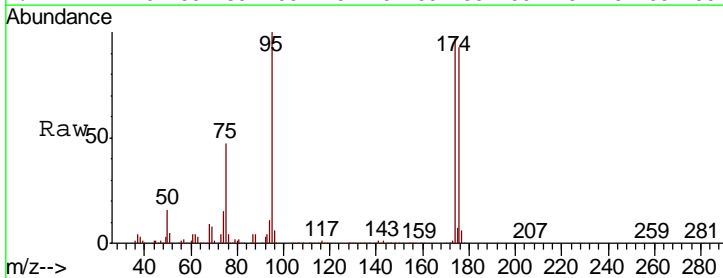
Instrument :
 MSVOA_N
 ClientSampled :
 WP-4

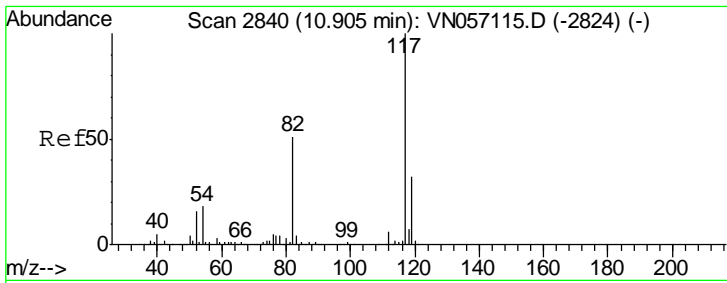
Tgt Ion: 98 Resp: 2145620
 Ion Ratio Lower Upper
 98 100
 100 64.6 51.2 76.8



#62
 4-Bromofluorobenzene
 Concen: 38.628 ug/l
 RT: 11.92 min Scan# 3156
 Delta R.T. 0.00 min
 Lab File: VN057157.D
 Acq: 9 Aug 2019 19:35

Tgt Ion: 95 Resp: 552650
 Ion Ratio Lower Upper
 95 100
 174 96.7 0.0 185.0
 176 93.1 0.0 181.2



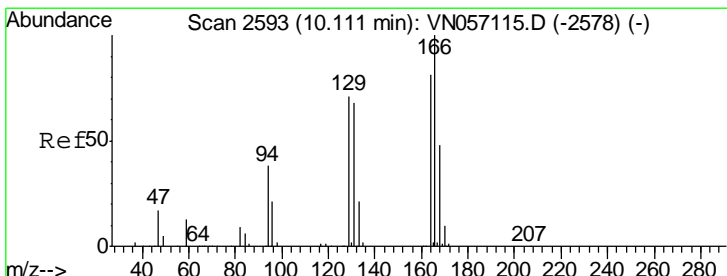
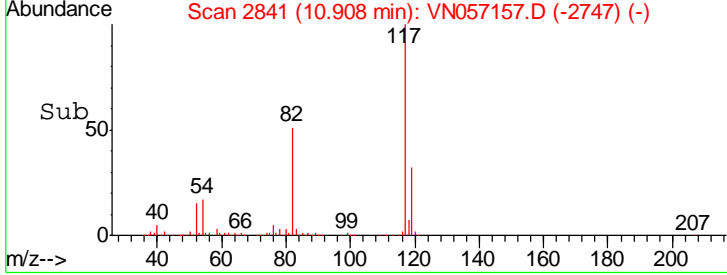
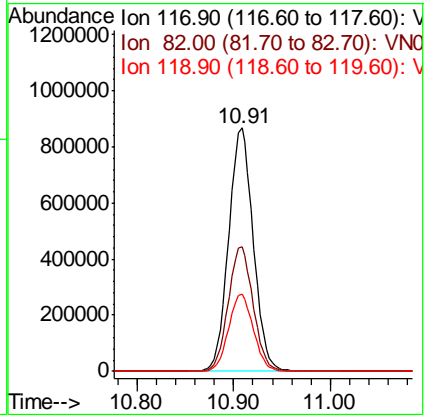
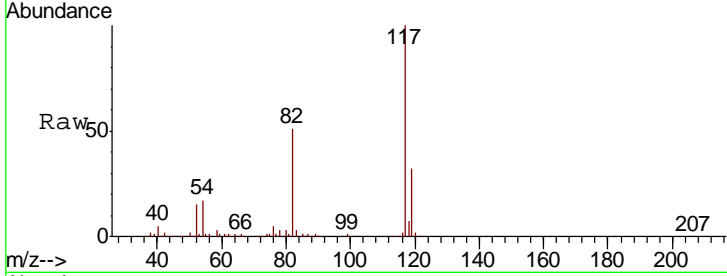


#63
 Chlorobenzene-d5
 Concen: 50.000 ug/l
 RT: 10.91 min Scan# 2841
 Delta R.T. 0.00 min
 Lab File: VN057157.D
 Acq: 9 Aug 2019 19:35

Instrument : MSVOA_N
 ClientSampled : WP-4

Tgt Ion:117 Resp: 1530845

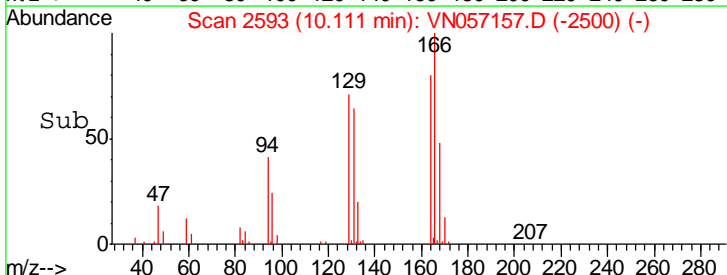
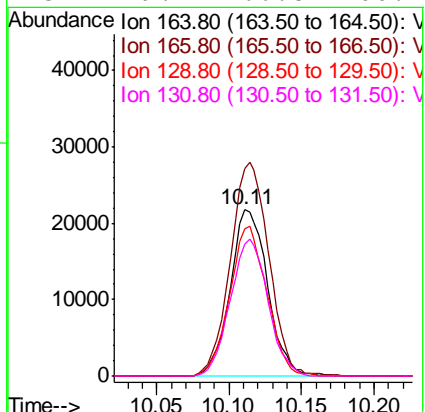
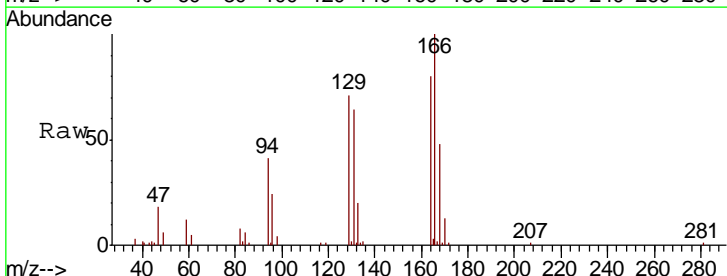
| Ion | Ratio | Lower | Upper |
|-----|-------|-------|-------|
| 117 | 100 | | |
| 82 | 51.2 | 40.8 | 61.2 |
| 119 | 31.7 | 25.7 | 38.5 |

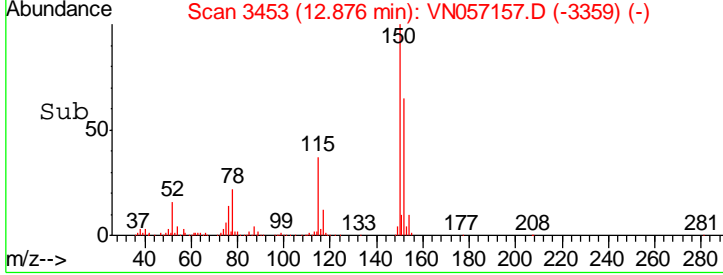
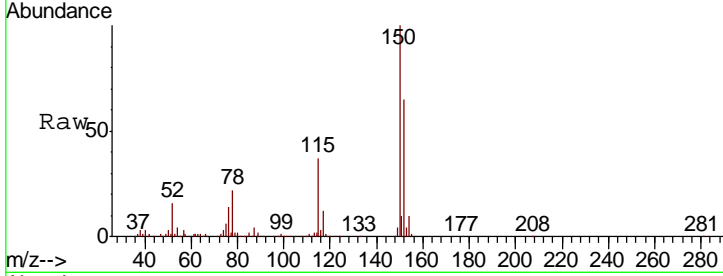
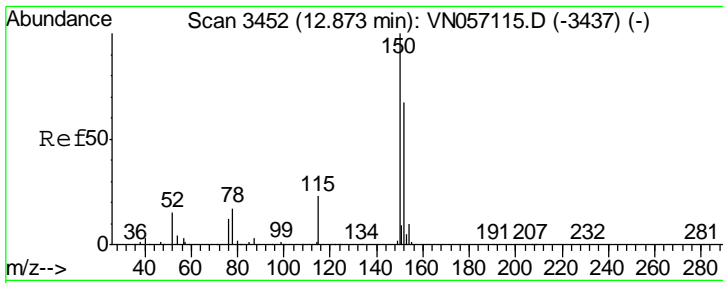


#64
 Tetrachloroethene
 Concen: 3.055 ug/l
 RT: 10.11 min Scan# 2593
 Delta R.T. 0.00 min
 Lab File: VN057157.D
 Acq: 9 Aug 2019 19:35

Tgt Ion:164 Resp: 38892

| Ion | Ratio | Lower | Upper |
|-----|-------|-------|-------|
| 164 | 100 | | |
| 166 | 124.6 | 98.3 | 147.5 |
| 129 | 88.6 | 69.8 | 104.6 |
| 131 | 79.4 | 66.8 | 100.2 |





#72
 1,4-Dichlorobenzene-d4
 Concen: 50.000 ug/l
 RT: 12.88 min Scan# 3453
 Delta R.T. 0.00 min
 Lab File: VN057157.D
 Acq: 9 Aug 2019 19:35

Instrument : MSVOA_N
 ClientSampled : WP-4

| Tot Ion | Resp | Lower | Upper |
|---------|-------|-------|-------|
| 152 | 100 | | |
| 115 | 57.2 | 27.5 | 82.5 |
| 150 | 157.7 | 0.0 | 341.6 |

