

Data Path : Z:\voasrv\HPCHEM1\MSVOA_N\Data\VN080924\
 Data File : VN083185.D
 Acq On : 09 Aug 2024 16:24
 Operator : JC\MD
 Sample : P3393-21DL 5X
 Mi sc : 8.38g/10mL/100uL/5.00mL/MSVOA_N/MEOH
 ALS Vial : 18 Sample Multiplier: 1

Instrument :
 MSVOA_N
ClientSampleId :
 S-850-GI-SO-10-10.5-072624DL

Quant Time: Aug 10 01:00:34 2024
 Quant Method : Z:\voasrv\HPCHEM1\MSVOA_N\methods\82N080724W.M
 Quant Title : SW846 8260
 QLast Update : Thu Aug 08 06:30:41 2024
 Response via : Initial Calibration

Compound	R. T.	QI on	Response	Conc	Units	Dev(Min)

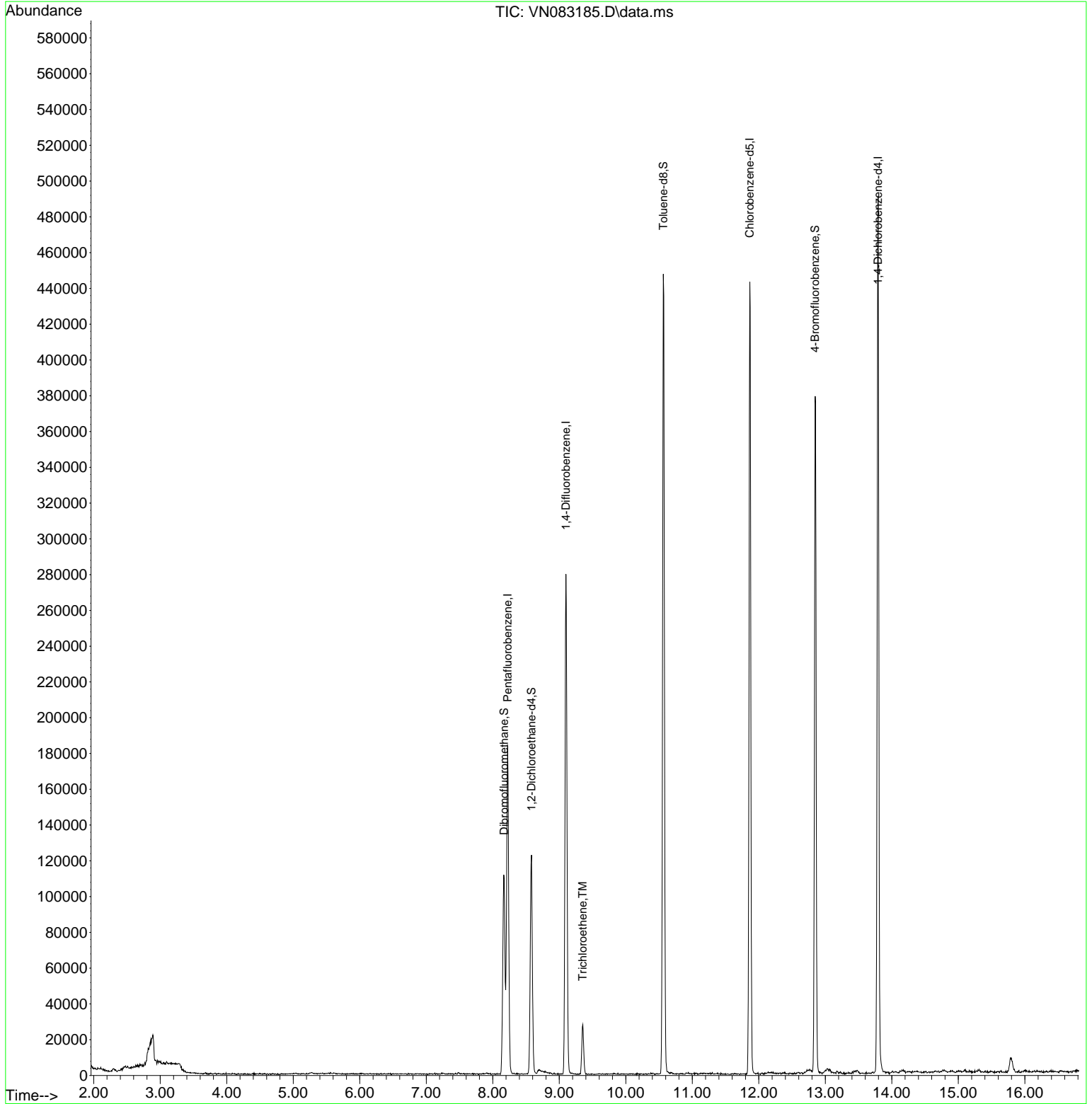
Internal Standards						
1) Pentafluorobenzene	8.224	168	124704	50.000	ug/l	0.00
34) 1,4-Difluorobenzene	9.100	114	235396	50.000	ug/l	0.00
63) Chlorobenzene-d5	11.865	117	248108	50.000	ug/l	0.00
72) 1,4-Dichlorobenzene-d4	13.794	152	121240	50.000	ug/l	0.00
System Monitoring Compounds						
33) 1,2-Dichloroethane-d4	8.582	65	102474	57.731	ug/l	0.00
Spiked Amount	50.000	Range 74 - 125	Recovery	=	115.460%	
35) Dibromofluoromethane	8.171	113	79820	54.326	ug/l	0.00
Spiked Amount	50.000	Range 75 - 124	Recovery	=	108.660%	
50) Toluene-d8	10.565	98	308761	56.335	ug/l	0.00
Spiked Amount	50.000	Range 86 - 113	Recovery	=	112.660%	
62) 4-Bromofluorobenzene	12.847	95	137133	64.179	ug/l	0.00
Spiked Amount	50.000	Range 64 - 133	Recovery	=	128.360%	
Target Compounds						
44) Trichloroethene	9.353	130	9494	6.024	ug/l	98

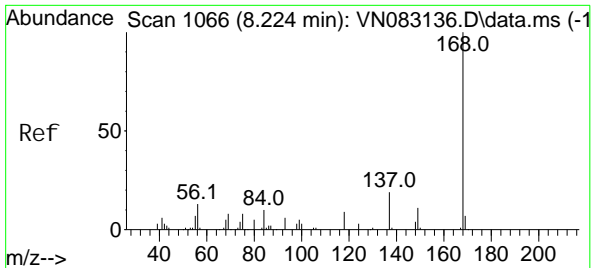
(#) = qualifier out of range (m) = manual integration (+) = signals summed

Data Path : Z:\voasrv\HPCHEM1\MSVOA_N\Data\VN080924\
 Data File : VN083185.D
 Acq On : 09 Aug 2024 16:24
 Operator : JC\MD
 Sample : P3393-21DL 5X
 Misc : 8.38g/10mL/100uL/5.00mL/MSVOA_N/MEOH
 ALS Vial : 18 Sample Multiplier: 1

Instrument :
 MSVOA_N
ClientSampleId :
 S-850-GI-SO-10-10.5-072624DL

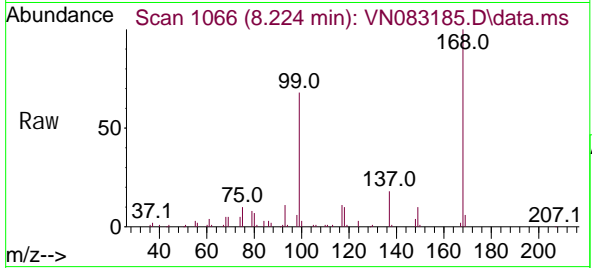
Quant Time: Aug 10 01:00:34 2024
 Quant Method : Z:\voasrv\HPCHEM1\MSVOA_N\methods\82N080724W.M
 Quant Title : SW846 8260
 QLast Update : Thu Aug 08 06:30:41 2024
 Response via : Initial Calibration



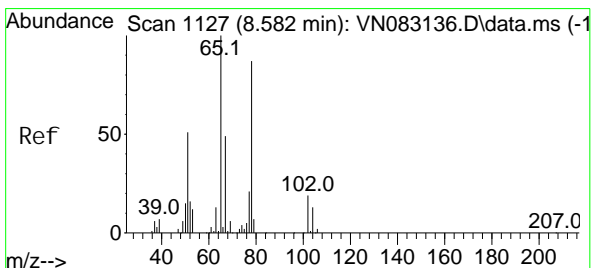
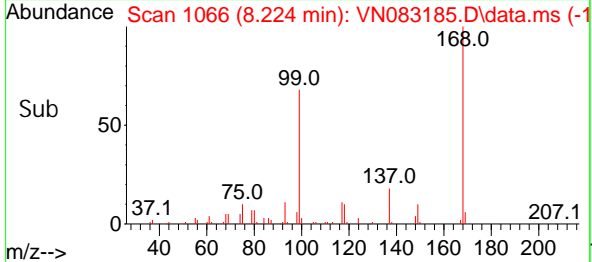
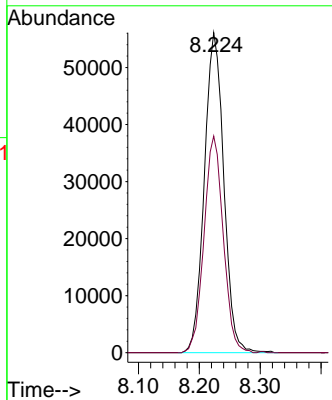


#1
 Pentafluorobenzene
 Concen: 50.000 ug/l
 RT: 8.224 min Scan# 1066
 Delta R.T. -0.000 min
 Lab File: VN083185.D
 Acq: 09 Aug 2024 16:24

Instrument : MSVOA_N
 ClientSampleId : S-850-GI-SO-10-10.5-072624DL

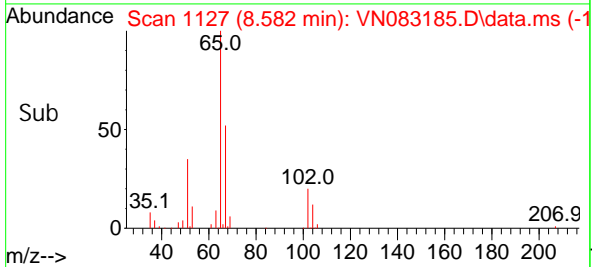
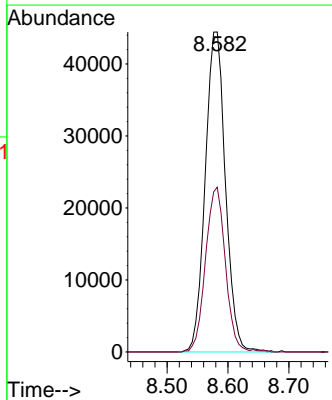
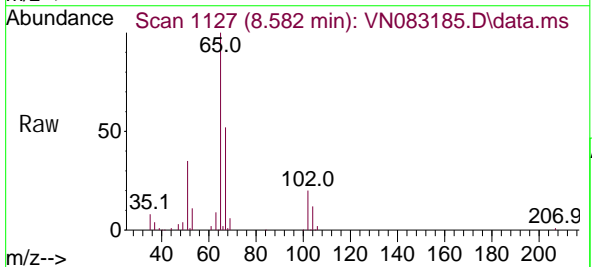


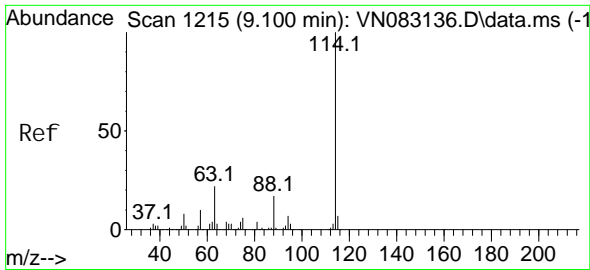
Tgt Ion: 168 Resp: 124704
 Ion Ratio Lower Upper
 168 100
 99 67.7 48.2 72.4



#33
 1,2-Dichloroethane-d4
 Concen: 57.731 ug/l
 RT: 8.582 min Scan# 1127
 Delta R.T. -0.000 min
 Lab File: VN083185.D
 Acq: 09 Aug 2024 16:24

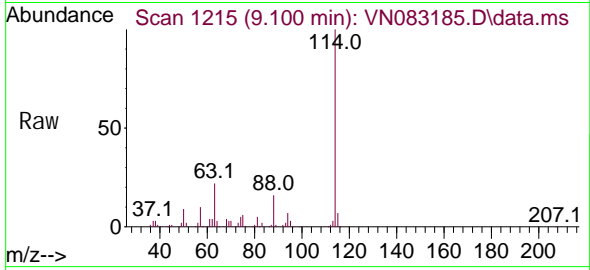
Tgt Ion: 65 Resp: 102474
 Ion Ratio Lower Upper
 65 100
 67 50.7 0.0 104.4



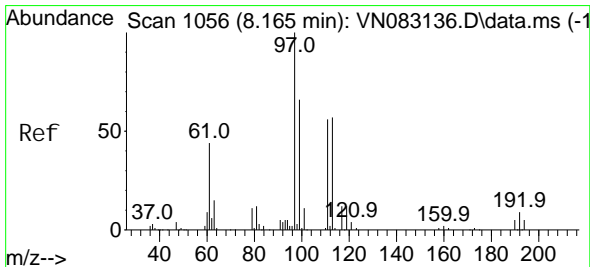
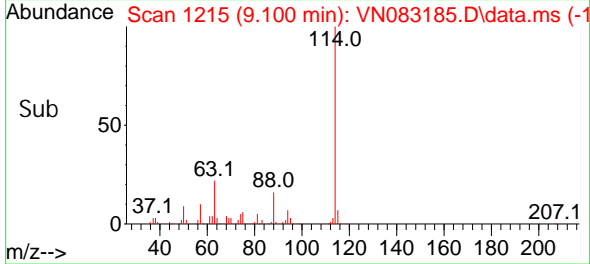
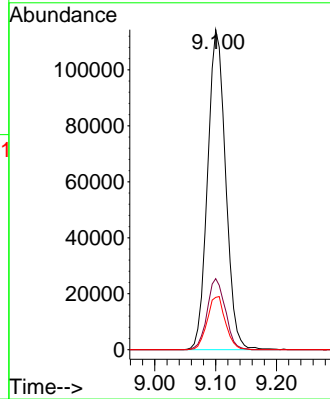


#34
 1, 4-Di fluorobenzene
 Concen: 50.000 ug/l
 RT: 9.100 min Scan# 11
 Delta R.T. -0.000 min
 Lab File: VN083185.D
 Acq: 09 Aug 2024 16: 24

Instrument : MSVOA_N
 ClientSampleId : S-850-GI-SO-10-10.5-072624DL

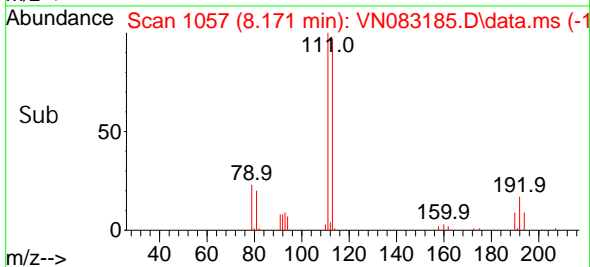
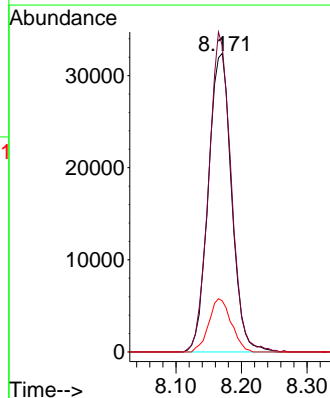
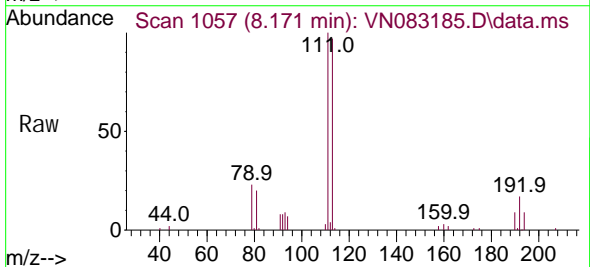


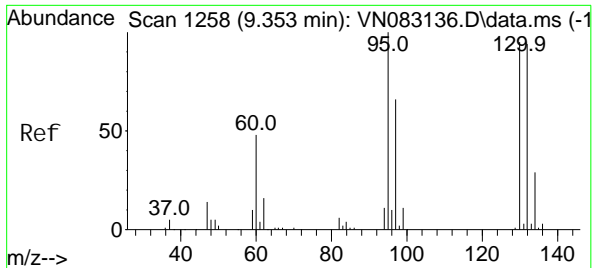
Tgt Ion: 114 Resp: 235396
 Ion Ratio Lower Upper
 114 100
 63 22.2 0.0 44.6
 88 16.3 0.0 31.4



#35
 Di bromofluoromethane
 Concen: 54.326 ug/l
 RT: 8.171 min Scan# 1057
 Delta R.T. 0.006 min
 Lab File: VN083185.D
 Acq: 09 Aug 2024 16: 24

Tgt Ion: 113 Resp: 79820
 Ion Ratio Lower Upper
 113 100
 111 103.4 82.4 123.6
 192 17.2 14.9 22.3

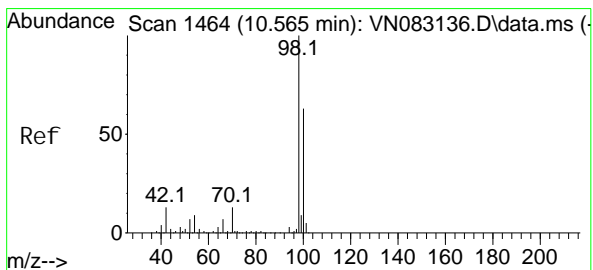
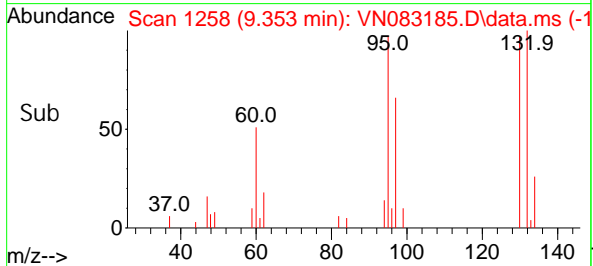
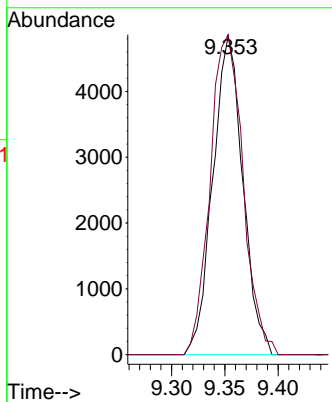
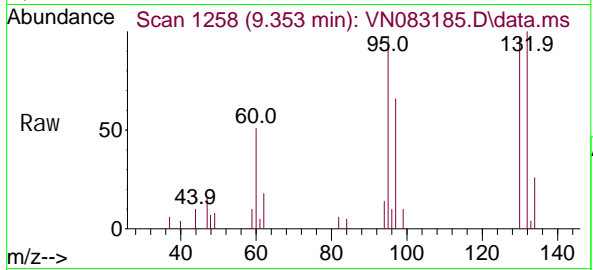




#44
 Trichloroethene
 Concen: 6.024 ug/l
 RT: 9.353 min Scan# 11
 Delta R.T. -0.000 min
 Lab File: VN083185.D
 Acq: 09 Aug 2024 16: 24

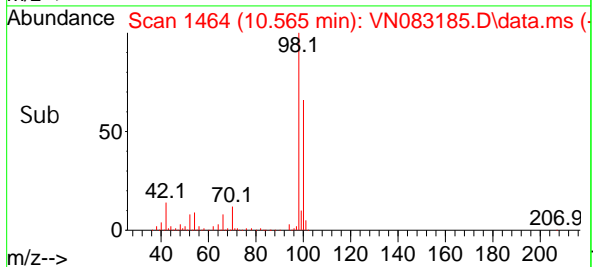
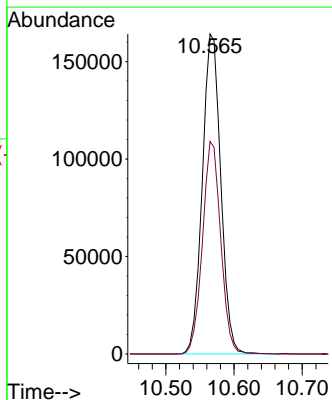
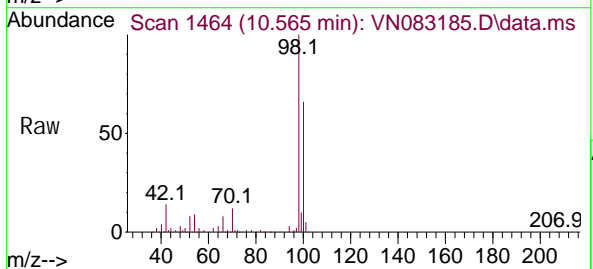
Instrument : MSVOA_N
 ClientSampleId : S-850-GI-SO-10-10.5-072624DL

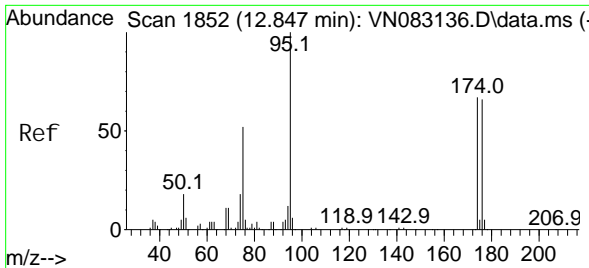
Tgt Ion: 130 Resp: 9494
 Ion Ratio Lower Upper
 130 100
 95 100.5 0.0 197.8



#50
 Toluene-d8
 Concen: 56.335 ug/l
 RT: 10.565 min Scan# 1464
 Delta R.T. -0.000 min
 Lab File: VN083185.D
 Acq: 09 Aug 2024 16: 24

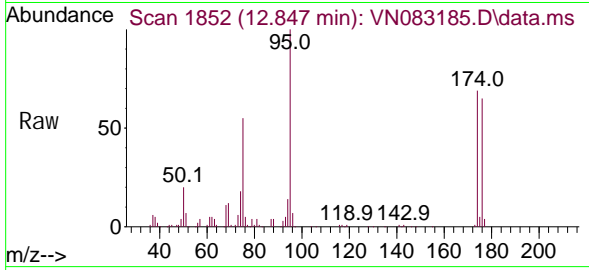
Tgt Ion: 98 Resp: 308761
 Ion Ratio Lower Upper
 98 100
 100 65.6 51.5 77.3



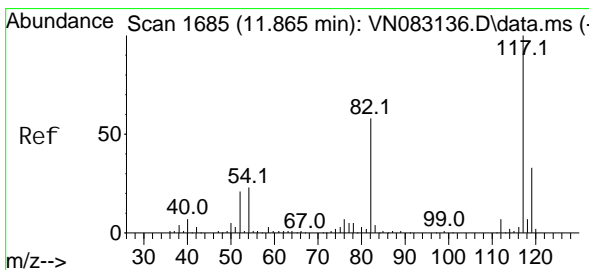
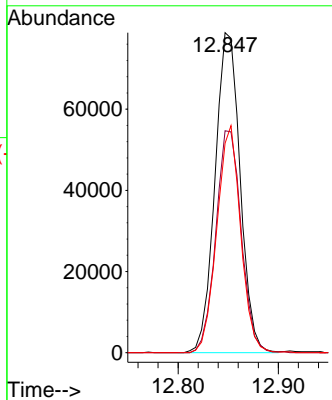
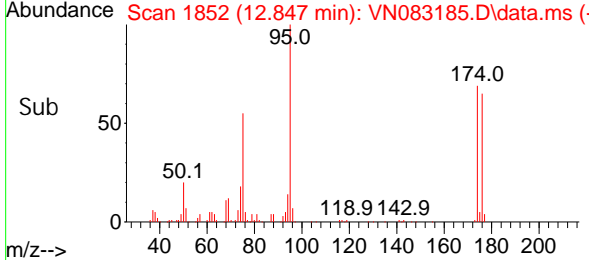


#62
 4-Bromofluorobenzene
 Concen: 64.179 ug/l
 RT: 12.847 min Scan# 1852
 Delta R.T. -0.000 min
 Lab File: VN083185.D
 Acq: 09 Aug 2024 16:24

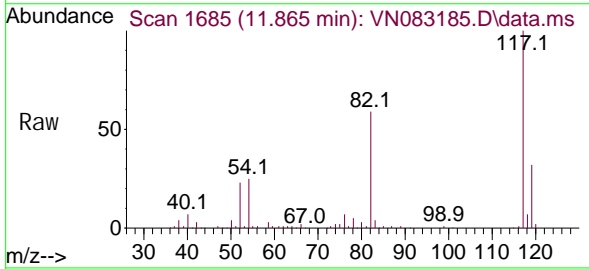
Instrument : MSVOA_N
 ClientSampleId : S-850-GI-SO-10-10.5-072624DL



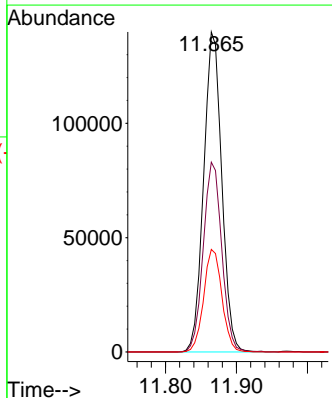
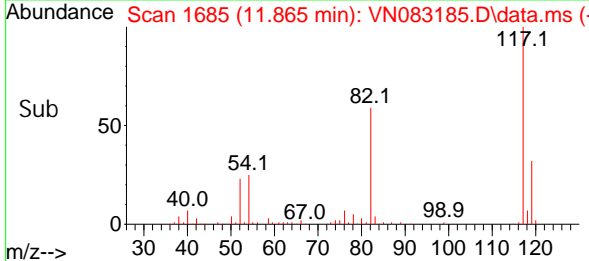
Tgt Ion: 95 Resp: 137133
 Ion Ratio Lower Upper
 95 100
 174 70.1 0.0 159.2
 176 67.2 0.0 147.6

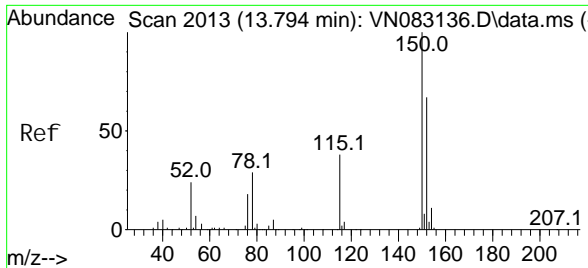


#63
 Chlorobenzene-d5
 Concen: 50.000 ug/l
 RT: 11.865 min Scan# 1685
 Delta R.T. -0.000 min
 Lab File: VN083185.D
 Acq: 09 Aug 2024 16:24



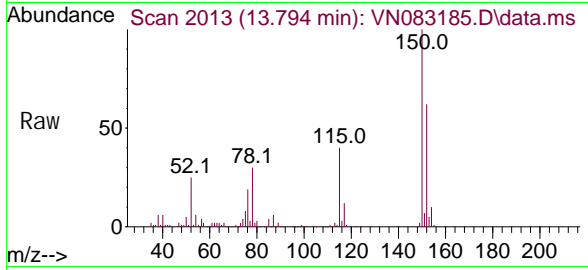
Tgt Ion: 117 Resp: 248108
 Ion Ratio Lower Upper
 117 100
 82 59.3 47.5 71.3
 119 32.0 25.6 38.4





#72
 1,4-Dichlorobenzene-d4
 Concen: 50.000 ug/l
 RT: 13.794 min Scan# 20
 Delta R.T. -0.000 min
 Lab File: VN083185.D
 Acq: 09 Aug 2024 16:24

Instrument : MSVOA_N
 ClientSampleId : S-850-GI-SO-10-10.5-072624DL



Tgt Ion	Resp	Lower	Upper
152	121240		
152	100		
115	65.2	30.6	91.6
150	159.3	0.0	348.6

