

Data Path : Z:\voasrv\HPCHEM1\MSVOA_N\Data\VN080924\
 Data File : VN083188.D
 Acq On : 09 Aug 2024 17:37
 Operator : JC\MD
 Sample : P3393-10ME 20X
 Mi sc : 8.11g/10mL/100uL/5.00mL/MSVOA_N/MEOH
 ALS Vial : 21 Sample Multiplier: 1

Instrument :
 MSVOA_N
ClientSampleId :
 S-851-GI-SO-14.5-15-072624ME

Quant Time: Aug 10 01:01:54 2024
 Quant Method : Z:\voasrv\HPCHEM1\MSVOA_N\methods\82N080724W.M
 Quant Title : SW846 8260
 QLast Update : Thu Aug 08 06:30:41 2024
 Response via : Initial Calibration

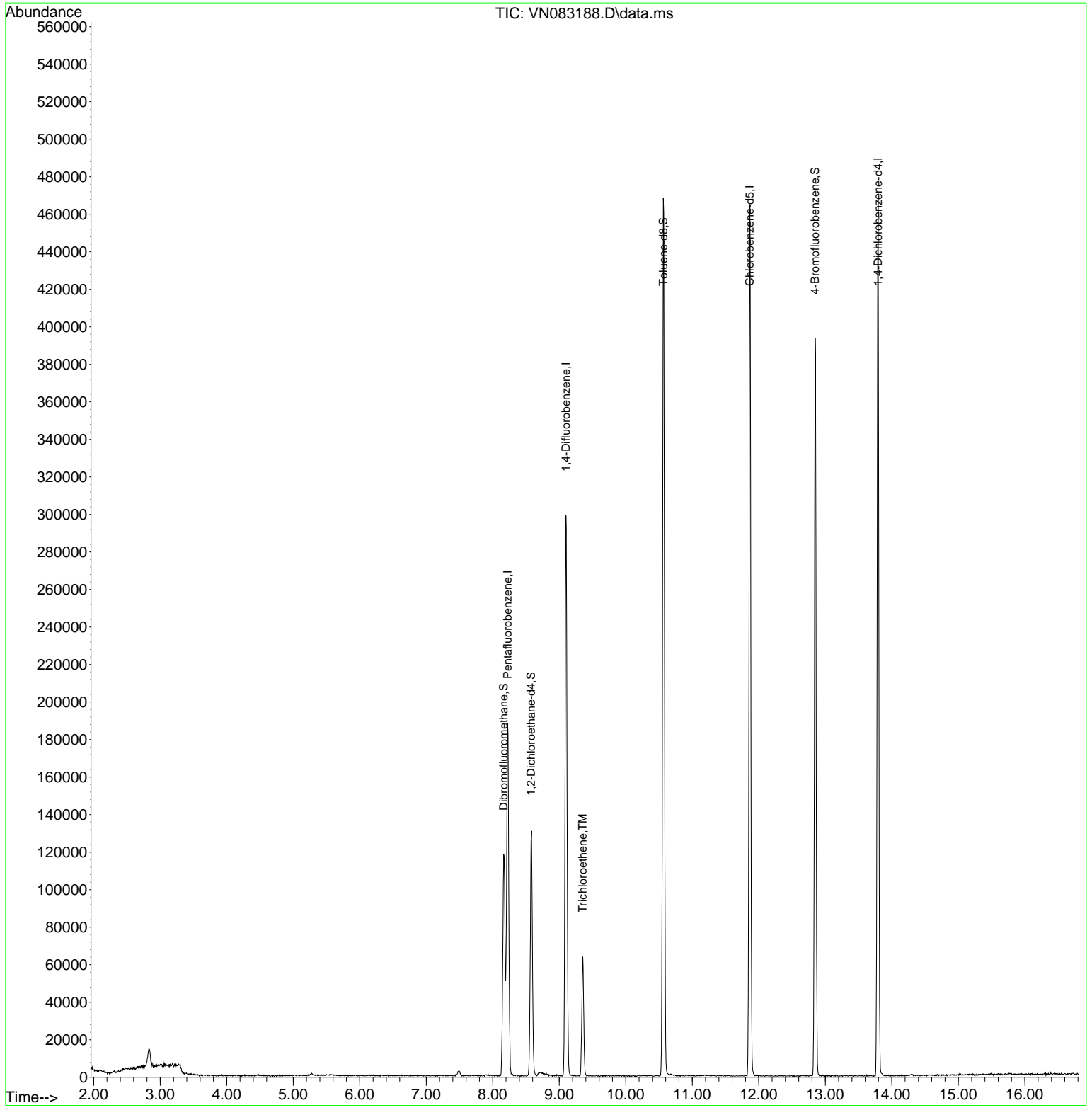
Compound	R. T.	QI on	Response	Conc	Units	Dev(Min)
Internal Standards						
1) Pentafluorobenzene	8.224	168	131656	50.000	ug/l	0.00
34) 1,4-Difluorobenzene	9.100	114	250486	50.000	ug/l	0.00
63) Chlorobenzene-d5	11.865	117	258872	50.000	ug/l	0.00
72) 1,4-Dichlorobenzene-d4	13.794	152	119613	50.000	ug/l	0.00
System Monitoring Compounds						
33) 1,2-Dichloroethane-d4	8.577	65	110267	58.841	ug/l	0.00
Spiked Amount	50.000	Range 74 - 125	Recovery = 117.680%			
35) Dibromofluoromethane	8.165	113	84843	54.265	ug/l	0.00
Spiked Amount	50.000	Range 75 - 124	Recovery = 108.540%			
50) Toluene-d8	10.565	98	326059	55.907	ug/l	0.00
Spiked Amount	50.000	Range 86 - 113	Recovery = 111.820%			
62) 4-Bromofluorobenzene	12.847	95	141249	62.123	ug/l	0.00
Spiked Amount	50.000	Range 64 - 133	Recovery = 124.240%			
Target Compounds						
44) Trichloroethene	9.353	130	22283	13.287	ug/l	100

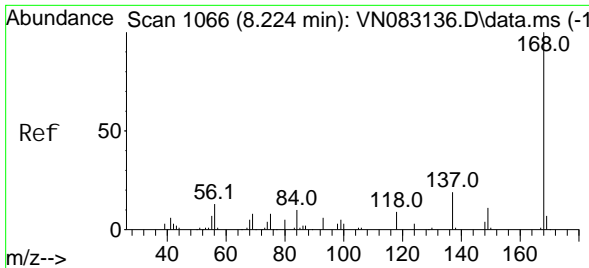
(#) = qualifier out of range (m) = manual integration (+) = signals summed

Data Path : Z:\voasrv\HPCHEM1\MSVOA_N\Data\VN080924\
 Data File : VN083188.D
 Acq On : 09 Aug 2024 17:37
 Operator : JC\MD
 Sample : P3393-10ME 20X
 Misc : 8.11g/10mL/100uL/5.00mL/MSVOA_N/MEOH
 ALS Vial : 21 Sample Multiplier: 1

Instrument :
 MSVOA_N
ClientSampleId :
 S-851-GI-SO-14.5-15-072624ME

Quant Time: Aug 10 01:01:54 2024
 Quant Method : Z:\voasrv\HPCHEM1\MSVOA_N\methods\82N080724W.M
 Quant Title : SW846 8260
 QLast Update : Thu Aug 08 06:30:41 2024
 Response via : Initial Calibration

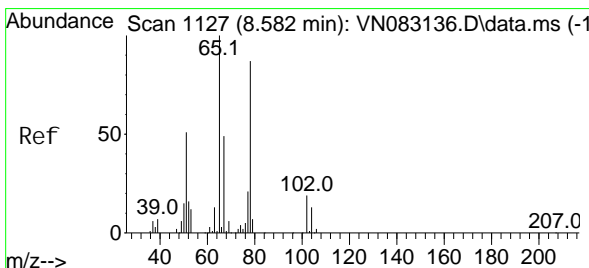
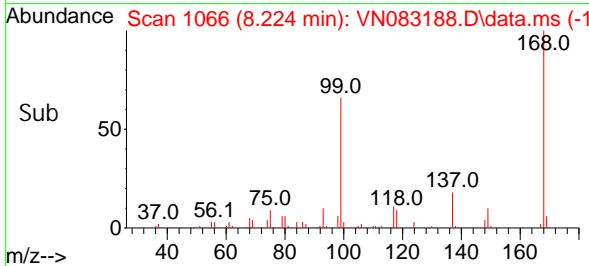
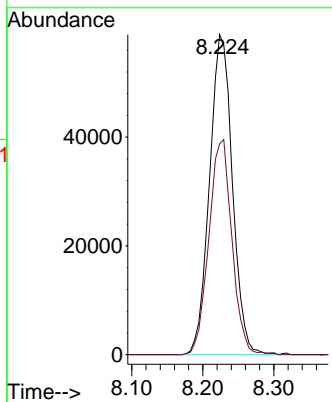
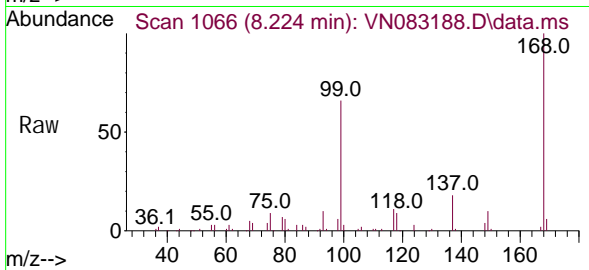




#1
 Pentafluorobenzene
 Concen: 50.000 ug/l
 RT: 8.224 min Scan# 1066
 Delta R.T. -0.000 min
 Lab File: VN083188.D
 Acq: 09 Aug 2024 17:37

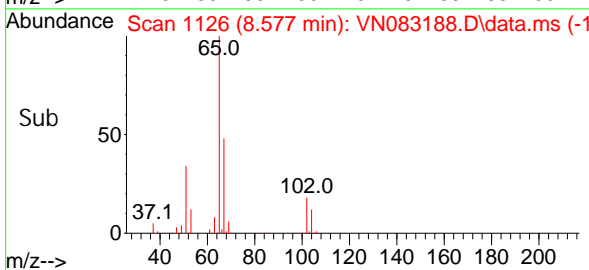
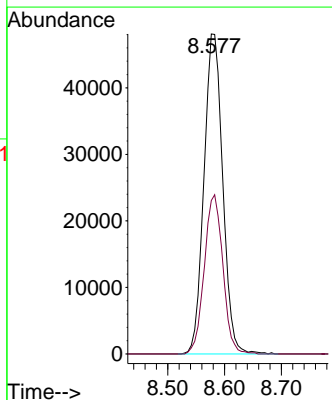
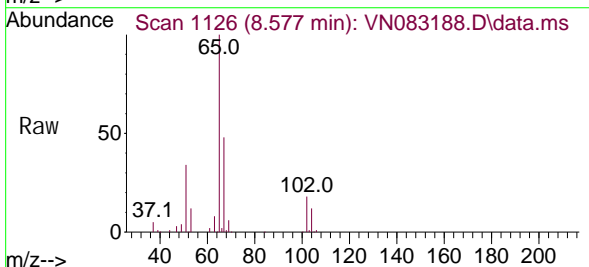
Instrument : MSVOA_N
 ClientSampleId : S-851-GI-SO-14.5-15-072624ME

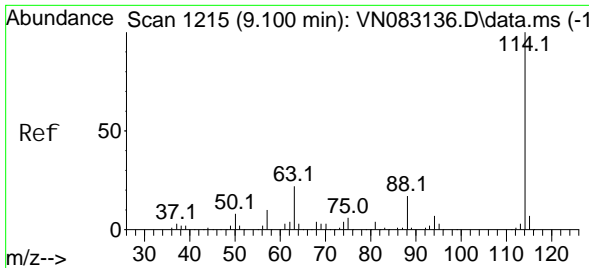
Tgt Ion: 168 Resp: 131656
 Ion Ratio Lower Upper
 168 100
 99 65.9 48.2 72.4



#33
 1,2-Dichloroethane-d4
 Concen: 58.841 ug/l
 RT: 8.577 min Scan# 1126
 Delta R.T. -0.006 min
 Lab File: VN083188.D
 Acq: 09 Aug 2024 17:37

Tgt Ion: 65 Resp: 110267
 Ion Ratio Lower Upper
 65 100
 67 49.2 0.0 104.4

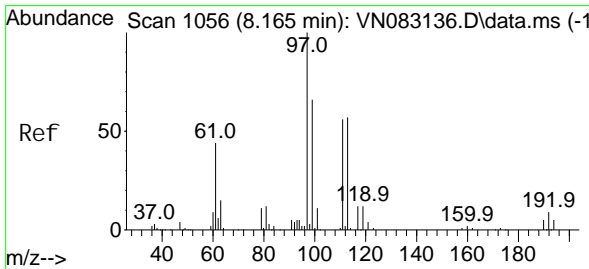
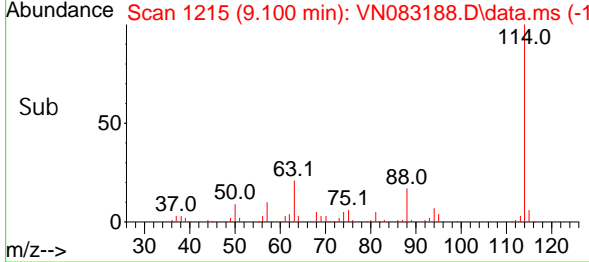
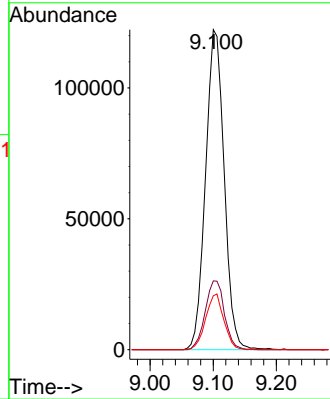
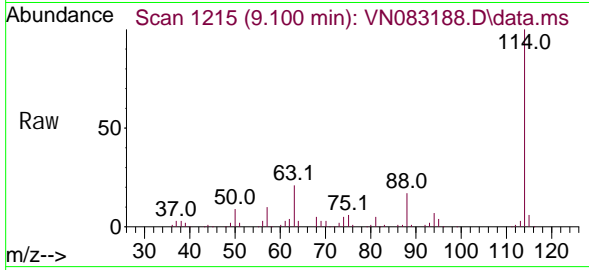




#34
 1, 4-Di fluorobenzene
 Concen: 50.000 ug/l
 RT: 9.100 min Scan# 111
 Delta R.T. 0.000 min
 Lab File: VN083188.D
 Acq: 09 Aug 2024 17:37

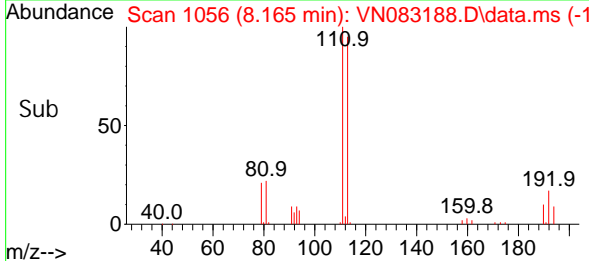
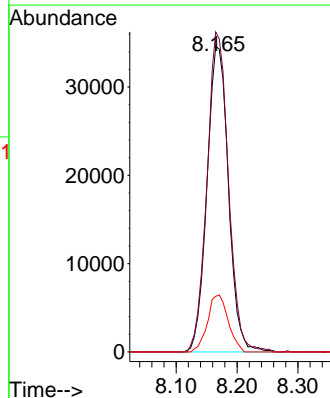
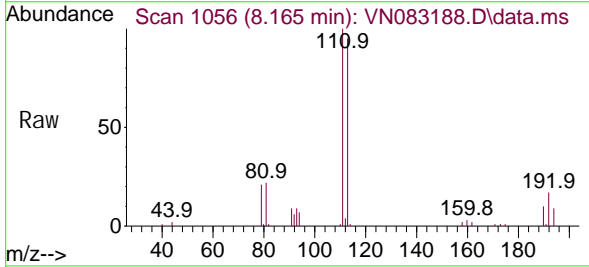
Instrument : MSVOA_N
 ClientSampleId : S-851-GI-SO-14.5-15-072624ME

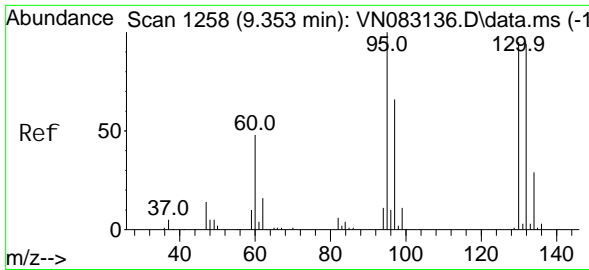
Tgt Ion	Resp	Lower	Upper
114	100		
63	21.5	0.0	44.6
88	16.8	0.0	31.4



#35
 Di bromofluoromethane
 Concen: 54.265 ug/l
 RT: 8.165 min Scan# 1056
 Delta R.T. 0.000 min
 Lab File: VN083188.D
 Acq: 09 Aug 2024 17:37

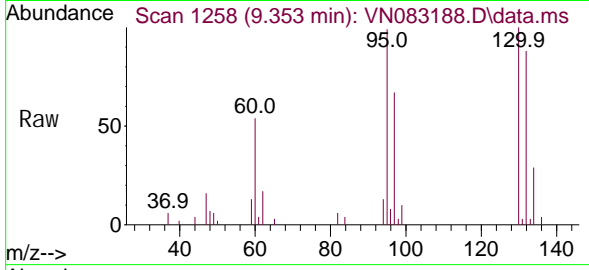
Tgt Ion	Resp	Lower	Upper
113	100		
111	104.8	82.4	123.6
192	17.9	14.9	22.3



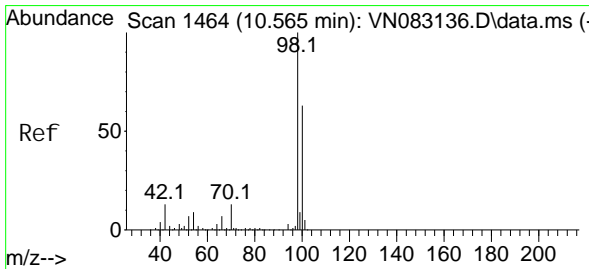
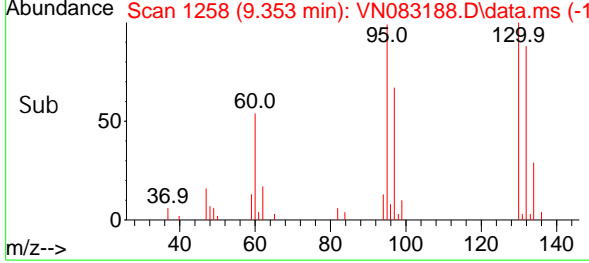
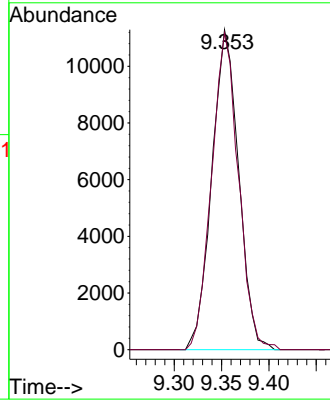


#44
 Trichloroethene
 Concen: 13.287 ug/l
 RT: 9.353 min Scan# 11
 Delta R.T. 0.000 min
 Lab File: VN083188.D
 Acq: 09 Aug 2024 17:37

Instrument : MSVOA_N
 ClientSampleId : S-851-GI-SO-14.5-15-072624ME

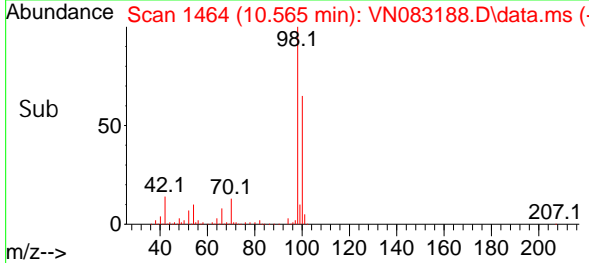
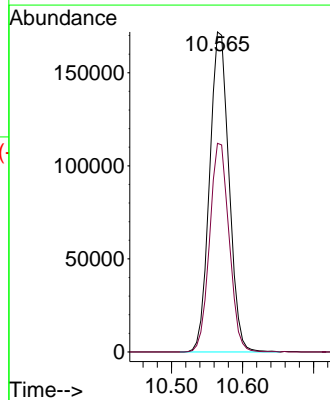
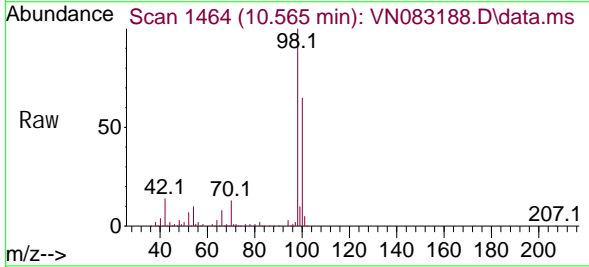


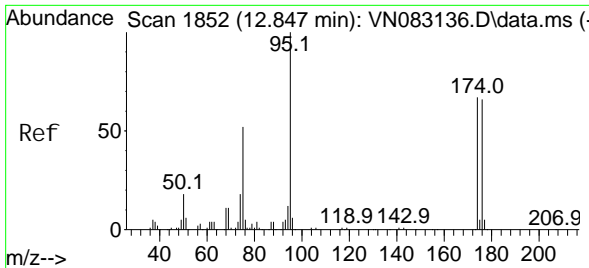
Tgt Ion: 130 Resp: 22283
 Ion Ratio Lower Upper
 130 100
 95 99.0 0.0 197.8



#50
 Toluene-d8
 Concen: 55.907 ug/l
 RT: 10.565 min Scan# 1464
 Delta R.T. 0.000 min
 Lab File: VN083188.D
 Acq: 09 Aug 2024 17:37

Tgt Ion: 98 Resp: 326059
 Ion Ratio Lower Upper
 98 100
 100 65.4 51.5 77.3



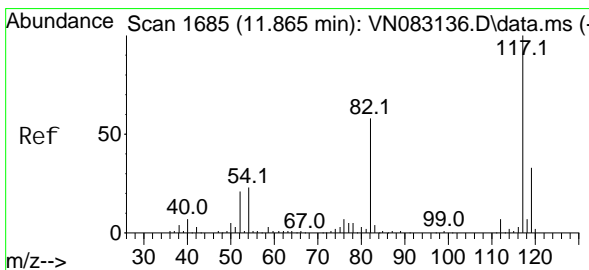
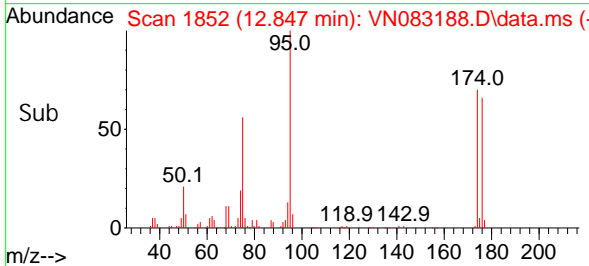
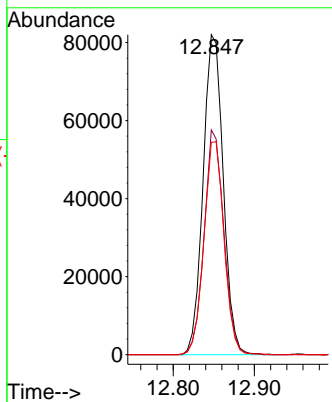
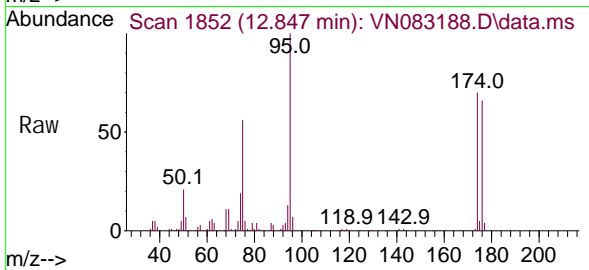


#62
 4-Bromofluorobenzene
 Concen: 62.123 ug/l
 RT: 12.847 min Scan# 1852
 Delta R.T. 0.000 min
 Lab File: VN083188.D
 Acq: 09 Aug 2024 17:37

Instrument : MSVOA_N
 ClientSampleId : S-851-GI-SO-14.5-15-072624ME

Tgt Ion: 95 Resp: 141249

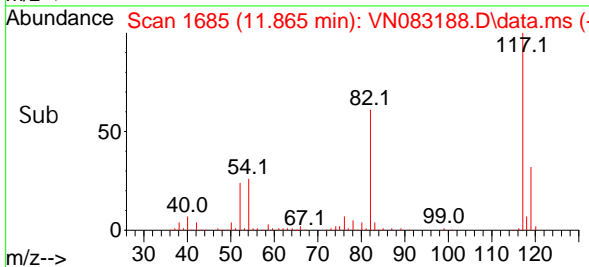
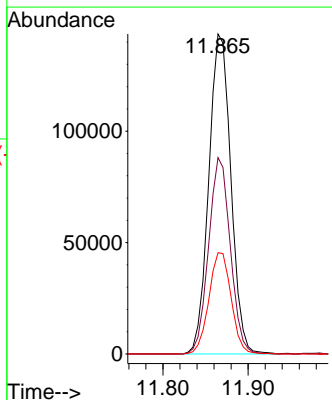
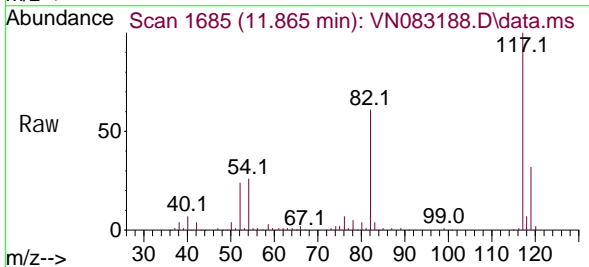
Ion	Ratio	Lower	Upper
95	100		
174	68.6	0.0	159.2
176	66.7	0.0	147.6

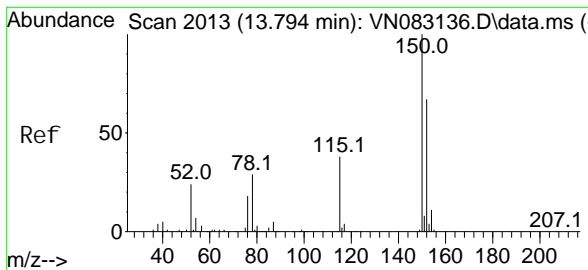


#63
 Chlorobenzene-d5
 Concen: 50.000 ug/l
 RT: 11.865 min Scan# 1685
 Delta R.T. 0.000 min
 Lab File: VN083188.D
 Acq: 09 Aug 2024 17:37

Tgt Ion: 117 Resp: 258872

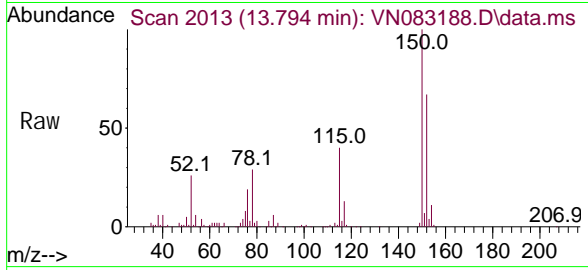
Ion	Ratio	Lower	Upper
117	100		
82	61.3	47.5	71.3
119	31.6	25.6	38.4





#72
 1,4-Dichlorobenzene-d4
 Concn: 50.000 ug/l
 RT: 13.794 min Scan# 20
 Delta R.T. 0.000 min
 Lab File: VN083188.D
 Acq: 09 Aug 2024 17:37

Instrument :
 MSVOA_N
ClientSampleId :
 S-851-GI-SO-14.5-15-072624ME



Tgt Ion	Resp	Lower	Upper
152	119613		
152	100		
115	64.9	30.6	91.6
150	158.3	0.0	348.6

